



FREE

Belfast Harbour

Tide Tables

23

22

21

20

19

18

17

16



23

22

21

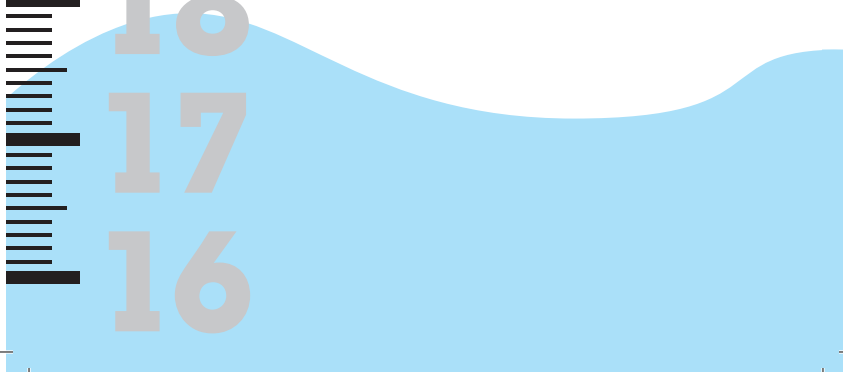
20

19

18

17

16



Safety First on Belfast Lough

Welcome to Belfast Harbour

Recreational Craft Must Contact "Belfast Harbour Radio"
on **VHF Channel 12** for traffic clearance to enter/exit.

All users of the Lough are expected to operate in a safe & responsible manner.

Users are required to always comply with international collision regulations.

Users are reminded to check the sailing & arrival times of ferries in the area.

Users are advised of the possibility of unexpected wavewash generated by shipping using Belfast Harbour.



WARNING
Beware of unexpected waves and spray
when launching or recovering craft.



WARNING
Beware of unexpected waves
and spray.



Welcome to **Belfast Harbour**

I am pleased to present the 2019 Tide Tables for Belfast Harbour.

I trust you will find the information contained within to be beneficial for your safe enjoyment of Belfast Harbour.

May I take this opportunity to draw your attention to the Notice to Mariners No.1 of 2019. This notice is a summary of all notices in force at the start of 2019 and can be found on our website www.belfast-harbour.co.uk.

I encourage you to visit the website regularly to acquaint yourself with the most up-to-date navigational safety information.

I wish you a safe and enjoyable visit to Belfast Harbour.



Captain K G Allen
Belfast Harbour Master



Safety First

Lifejackets

“Lifejackets save lives” (MCA, 2007)

Notice is hereby given that it is strongly recommended that all recreational boat users in Belfast Harbour wear correctly maintained, fit for purpose Lifejackets and Buoyancy Aids at all times when at sea.

On 4th July 2008 an expert panel review, comprising of staff from the RYA, RNLI, MAIB, and industry, was convened to analyse fatal maritime incidents in 2007 and assess whether a lifejacket would have made a difference in saving a person's life.

After reviewing each incident, the panel had to choose from whether it was Probably, Possibly or Unlikely that the person would have been saved by wearing a lifejacket that was suitably maintained, correctly worn and fit for purpose, or alternatively, that it was Not Appropriate for the person to have been wearing a lifejacket in the particular incident under review.

From a total of 133 fatalities, 91 were deemed as Not Appropriate for the casualty to be wearing a lifejacket. These deaths covered recreational activities such as Diving and Coastal Walking where there is no call for the participant to wear a lifejacket, and other 'misadventures' where a person ended up drowning despite not taking part in any maritime activity.

Of the remaining 42 fatalities, it was agreed that in 29 cases (69%), a lifejacket would have had a more positive outcome, either probably or possibly saving a person's life.

(MCA, 2007)



Belfast Harbour radio can be contacted via

Channel 12VHF



Information for Leisure Craft visiting Belfast Harbour

Belfast Harbour Marina located in Abercorn Basin welcomes leisure craft.

This facility, which is due for significant expansion in Spring 2019, presently consists of 425m of fully serviced recreational pontoons which are available for visiting and seasonal berthing.

The maximum available depth in the Marina is 4m. Vessels greater than 4m draught or 15m length overall wishing to visit Belfast should contact the Harbour Master's Office prior to arrival. For more information on visiting the Marina, including tariffs, please visit the website - www.belfast-harbour.co.uk/port/marina

The following information has been provided for the benefit of recreational users, however current Notice to Mariners and guides should always be consulted on Belfast Harbour's website www.belfast-harbour.co.uk/port/navigation-pilotage/notice-to-mariners

In addition to the code of conduct (p10-13 overleaf), users of leisure craft should refer to and abide by 'Operating Rules within Belfast Harbour' which are available at www.belfast-harbour.co.uk/port/marina/operating-rules

Belfast Harbour

Code of Conduct

1 Conduct of Transits to and from Berths.

- 1.1 Vessels transiting to and from berths must do so under power, yachts should have their sails down.
- 1.2 No vessels are permitted to be underway inside Harbour Limits during hours of darkness, unless vessels are fitted with the appropriate navigation lights as prescribed by the Collision Regulations.
- 1.3 Recreational craft not fitted with operational radar are not normally permitted to make transits of the Inner Harbour or Victoria Channel when visibility is less than 0.5 nautical miles.
- 1.4 Leisure craft are not permitted in Herdman Channel, or Musgrave Channel unless navigating to the Connswater.
- 1.5 Except where these Guidelines otherwise require; The International Regulations for Prevention of Collision at Sea (Collision Regulations) apply throughout Belfast Harbour Limits.

In particular, attention is drawn to Rule 9, narrow channels – vessels should keep as near to the outer limit of the channel or fairway which lies on her starboard side as is safe and practicable.

- 1.6 The Master of a leisure craft shall ensure it is manoeuvred in a manner so as not to cause injury, nuisance, excessive wash, damage to property, loss of life, and must keep well clear of vessels fishing, dredging or otherwise working whilst underway.
- 1.7 All vessels must be equipped and manned to undertake all transits safely.
- 1.8 All vessels should carry Admiralty Chart 1752 or equivalent.
- 1.9 All vessels must carry sufficient number and type of lifejackets for those on board.
- 1.10 No sightseeing or stopping is permitted during transit.
- 1.11 Leisure craft must proceed at a safe and appropriate speed, and not exceed a maximum speed of 6 knots to South-West of the Twin



Beacons unless granted prior consent by the Harbour Master.

- 1.12 Craft must maintain minimum safe speed when navigating near small craft moorings.
- 1.13 The Master of any vessel must comply with any temporary speed restrictions imposed by Port Control.

2 Compliance with Directions

The Master of any vessel shall comply with any direction given to him by the Harbour Master or an officer designated by the Harbour Master to do so on his behalf.

3 Priority of Vessels within Belfast Harbour Limits

- 3.1 Leisure craft shall not impede the passage of any vessel greater than 20m in length navigating within the inner Harbour or Victoria Channel.
- 3.2 Leisure craft, which are not confined to the fairway, shall not make use of the fairway so as to obstruct other vessels which can navigate only within the fairway, and when navigating across the Channel or through the inner Harbour shall do so by the shortest route that will avoid such obstruction.
- 3.3 Any vessel upon encountering a vessel exhibiting the signals prescribed by the Collision Regulations for vessels constrained by their draught, shall afford such vessels a minimum distance of 5 cables ahead and 2 cables astern.

4 Carriage of VHF / Mobile Telephone & Communication with Port Control

- 4.1 Belfast Harbour strongly recommend all vessels navigating within Harbour Limits to carry VHF radio. Where carried, VHF radio watch is to be maintained on Ch 12 when within port limits.
- 4.2 Where no VHF is carried, a mobile telephone should be used in cases of emergency to contact Port Control.
- 4.3 Port Control, callsign "Belfast Harbour Radio", maintains a listening watch at all times on VHF channel 12. Port Control is also contactable in case of emergency by telephone on - 028 9055 3010.
- 4.4 Inward vessels must report to Port Control when:
 - Entering the Main Channel, stating location
 - Arriving at their berth
- 4.5 Departing vessels must report to Port Control when:
 - Prior to departing their berth
 - Upon exiting the main channel, stating location
- 4.6 Vessels wishing to cross the Victoria Channel to the South-West of No.2 buoy must contact Port Control.
- 4.7 Any emergencies should be communicated firstly to Belfast Coastguard on VHF Ch 16, and to Port Control.
- 4.8 Vessels should avoid excessive use of VHF Ch 12 wherever possible.

Belfast Harbour

Tide Tables 2019

5 Age of Master

No person under the age of 16 years shall steer or navigate within the Harbour any power driven vessel unless in possession of an appropriate RYA qualification or accompanied by a person of 18 years or older.

6 Navigation under the influence of Alcohol or Drugs Prohibited

The Master of any vessel shall not move the vessel within Harbour Limits if his ability to do so is impaired by drink or drugs or if the proportion of alcohol in his breath, blood or urine exceeds

- i) In the case of breath, 35 micrograms of alcohol in 100 ml
- ii) In the case of blood, 80 milligrams of alcohol in 100 ml, and
- iii) In the case of urine, 107 milligrams of alcohol in 100 millilitres.

7 Public Landings

The Master of a vessel shall not place his vessel or allow it to be in such a situation as to obstruct or interfere with the access to any recognised landing place or leave it moored alongside any such landing place unattended without the permission of the person in charge of that landing place.

8 Water Sports

Water Skiing, Wind Surfing, Kite Surfing, Jet Skiing, rowing, canoeing or kayaking are not permitted in the Inner Harbour or Victoria Channel without prior permission from the Harbour Master.

9 Diving / Swimming

- 9.1 No swimming or recreational diving is permitted inside the Inner Harbour or Victoria Channel
- 9.2 Diving elsewhere within Harbour Limits is only permitted with prior consent of the Harbour Master
- 9.3 Those wishing to undertake commercial diving operations should contact Port Operations during office hours.

10 Events

Organisers of water based events anywhere inside Harbour Limits are required to provide a minimum of 14 days notice in writing to the Harbour Master, and provide event plans, risk assessments, and evidence of insurance as appropriate.

11 Rigging to be Secured

Any vessel when moored within Harbour Limits fitted with a mast shall at all times ensure the rigging is secured so that it does not make undue noise.

12 Provision of Proper Fenders

The Master and the owner of a vessel shall ensure that she is provided with a sufficient number of fenders of a type that would float in water and a size appropriate to the vessel and, when berthing and leaving or lying at a quay, pontoon, or against other vessels, the Master shall cause the vessel to be fended off from that quay or those other vessels so as to prevent damage to that quay, pontoons, those other vessels or any other property.

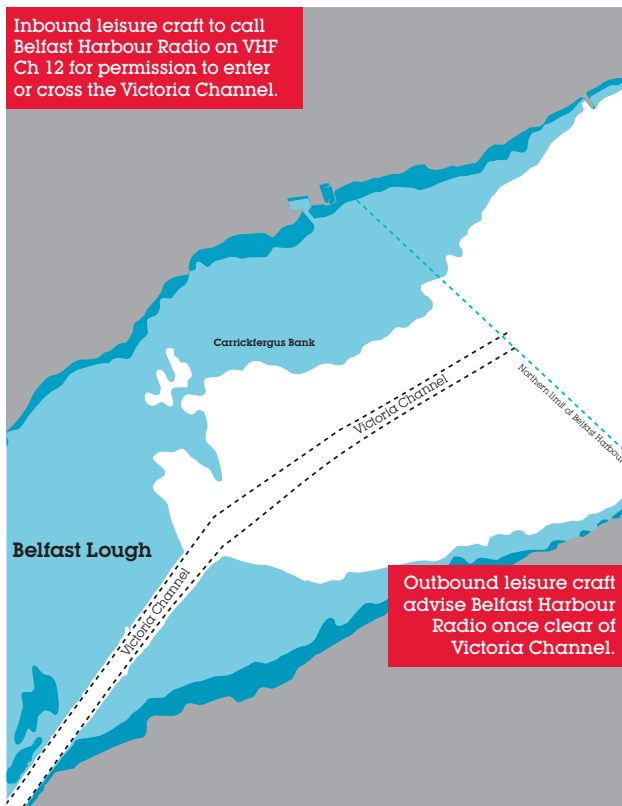


Belfast Harbour Code of Conduct (Cont.)

- 13 Access Across Decks**
The Master of a vessel alongside a quay, pontoon, or alongside any vessel already berthed within the Harbour shall, if required to do so by the Harbour Master or other authorised officer, give free access across the deck of his vessel for persons and goods to and from vessels berthed alongside his decks.
- 14 Unmooring of Vessels**
No person except the Harbour Master or a person acting on behalf of the Harbour Master in pursuance of his duties shall for any purpose whatsoever unmoor or cast off or loose any mooring of any vessel moored within the Harbour without the previous permission of the owner or lawful Master of such a vessel.
- 15 Vessels not to make fast to Unauthorised Objects**
The Master of a vessel shall not knowingly cause or permit any person to secure the vessel to any post, quay, ring, tide board, steps, vertical ladder, fender or any other thing or place not assigned for that purpose.
- 16 Fishing within Harbour Limits**
16.1 No person shall fish or use any fishing apparatus anywhere within the Inner Harbour.
- 16.2 The Master of a vessel shall ensure that no fishing apparatus is placed in or near the Victoria Channel in a manner that could pose a risk of being fouled by any vessel using the Victoria Channel or waters contiguous to it. If the owner of fishing apparatus shall not comply with any direction of the Harbour Master given to remove the apparatus, the Harbour Master may, on giving where reasonably practicable notice, remove such apparatus.
- 17 Registration & Insurance of Leisure Craft Vessels**
17.1 Every vessel must have their name or ID letters conspicuously marked on it.
17.2 Every vessel wishing to navigate within the Inner Harbour or use the Leisure Craft Facilities must have appropriate third party marine insurance to cover a minimum of £2 million.
- 18 Non Displacement Craft**
Hovercraft, WIG craft and Seaplanes are not permitted within Harbour Limits without prior permission from the Harbour Master.
- 19 Pontoon Access**
19.1 The Pontoon should be kept clear of obstructions at all times to maintain a safe means of access.

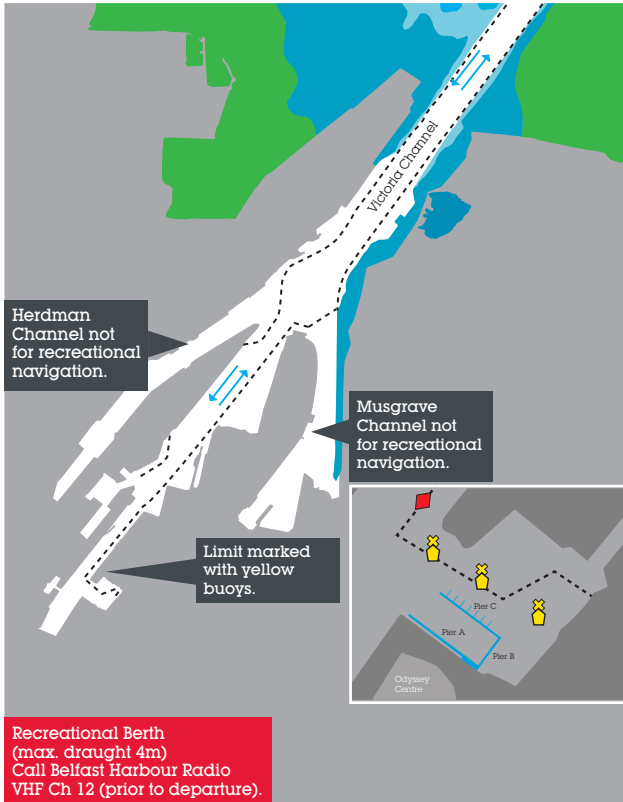
Belfast Harbour

Tide Tables 2019



For guidance only – do not use for navigation

Guidance for recreational users



For guidance only – do not use for navigation

Emergency Contact Numbers

for recreational users

Coastguard

VHF Channel 16

Tel +44 (0)28 9146 3933
or 999

Belfast Harbour Radio

VHF Channel 12

Belfast Harbour Office

Tel +44 (0)28 9055 4422

Port Operations

Tel +44 (0)28 9055 3014

Belfast Harbour Police

Tel +44 (0)28 9055 3000

Northern Ireland Fire & Rescue Service

Tel +44 (0)28 9266 4221
or 999

Northern Ireland Ambulance Service

Tel 999

Attention is drawn to the Notices to Mariners on Belfast Harbour's website www.belfast-harbour.co.uk; in particular to Notice to Mariners No.1 of 2019.



Constants

Port	H	M
Ardglass	+0	23
Ayr	+0	56
Ballycastle	-3	20
Bangor	+0	10
Buncrana, Lough Swilly	-5	6
Carlingford Bar	+0	24
Campbeltown	+0	44
Coleraine	-4	3
Corran Narrows	-5	17
Crinan	+5	48
Donaghadee	+0	20
Douglas, IoM	+0	7
Dublin	+0	39
East Tarbert (Lough Fyne)	+0	55
Galway	-6	00
Gigha Sound	+3	31
Heysham	+0	11
Killyleagh, Co. Down	+2	2

Port	H	M
Kyleakin	-4	28
Lamlash	+0	50
Larne	+0	4
Londonderry	-2	53
Mull of Kintyre	-0	24
Newcastle, Dundrum Bay	+0	30
Oban	-5	24
Point of Ayre	+0	3
Portavogie	+0	15
Port Ellen (Islay)	-6	0
Port Patrick	+0	10
Portree	-4	38
Portrush	-4	33
Red Bay	+0	6
Strangford Bar	+0	16
Strangford Quay	+1	52
Tobermory	-5	14
Warrenpoint, Co. Down	+0	30

Times & Heights of High & Low Waters

All times are in (GMT)
Greenwich Mean Time.

Daylight saving time will begin at 0100 hrs on Sunday 31st March and end at 0200hrs on Sunday 27th October. Between these dates one hour should be added to GMT times.

Heights refer to Harbour Datum which is also Admiralty Chart Datum.

Tidal predictions for Belfast have been computed by The United Kingdom Hydrographic Office (copyright reserved).

Phases of the Moon are reproduced, with permission, from data supplied by The United Kingdom Hydrographic Office.





Follow these steps carefully

- The International Regulations for the Prevention of Collision at Sea Rules apply throughout the Lough. Know them and follow them.
- Give early notice of your intentions as ferries approach very quickly.
- Check the ferry times in your area.
- Watch out for the ferry wash, especially when launching or retrieving boats.

For information on winter and summer berthing, please call **028 9055 3506** or e-mail **m.office@belfast-harbour.co.uk**

Further details are also available on the Belfast Harbour website: **belfast-harbour.co.uk/port/marina**

Belfast Harbour

Tide Tables 2019

Levels of Tides

Above Harbour Datum

	Feet	Meters
Mean High Water, Spring Tides	11.4	3.5
Mean High Water, Neap Tides	9.7	2.9
Mean Low Water, Spring Tides	1.4	0.4
Mean Low Water, Neap Tides	3.5	1.1

Highest Spring Tide on record

5th January 1991	16.07	4.9
------------------	-------	-----

Average range of tide

(At Spring Tides)	10.0	3.1
(At Neap Tides)	6.2	1.9

The Tidal current runs at the rate of .33 knot on Spring Tides, and .25 knot on Neap Tides.

Harbour & ordnance datum

Harbour Datum Level of No.2 Clarendon Dry Dock Sill, which is also Admiralty Chart Datum.

Ordnance datum (1958)

6.61 feet (2.0 metres) above Harbour datum.

Conversion Table

Care has been taken in compiling the information given, but Belfast Harbour cannot be responsible for any inaccuracy, mis-statement or omission.

Moon symbols used:

- New
- Full



Belfast Harbour

January 2019

	Time	Metres		Time	Metres
1st Tuesday	0058	0.8	8th Tuesday	0020	3.3
	0732	3.1		0605	0.8
	1332	1.0		1237	3.6
	1947	3.4		1839	0.7
2nd Wednesday	0159	0.8	9th Wednesday	0056	3.2
	0829	3.2		0640	0.8
	1433	0.9		1311	3.6
	2046	3.4		1913	0.7
3rd Thursday	0252	0.8	10th Thursday	0133	3.2
	0921	3.3		0717	0.8
	1527	0.8		1345	3.5
	2138	3.4		1949	0.7
4th Friday	0337	0.8	11th Friday	0213	3.2
	1008	3.4		0756	0.8
	1613	0.8		1419	3.5
	2225	3.4		2027	0.7
5th Saturday	0417	0.8	12th Saturday	0254	3.1
	1051	3.5		0838	0.9
	1654	0.7		1455	3.4
	2307	3.4		2110	0.8
6th Sunday	0454	0.8	13th Sunday	0339	3.1
	1129	3.5		0924	1.0
	1730	0.7		1537	3.3
	2345	3.3		2158	0.8
7th Monday	0530	0.8	14th Monday	0431	3.0
	1204	3.6		1015	1.1
	1805	0.7		1628	3.2
				2254	0.9
			15th Tuesday	0529	3.0
				1113	1.2
				1732	3.1

All times are GMT.



Tide Tables 2019

	Time	Metres		Time	Metres
16th Wednesday	0002	1.0	24th Thursday	0106	3.4
	0629	3.0		0701	0.5
	1223	1.2		1324	3.9
	1842	3.1		1927	0.2
17th Thursday	0118	0.9	25th Friday	0159	3.4
	0730	3.1		0751	0.6
	1338	1.1		1415	3.8
	1949	3.1		2019	0.3
18th Friday	0218	0.8	26th Saturday	0253	3.3
	0827	3.2		0843	0.6
	1440	0.9		1506	3.7
	2049	3.3		2110	0.4
19th Saturday	0309	0.7	27th Sunday ☾	0347	3.2
	0919	3.4		0938	0.7
	1532	0.7		1600	3.6
	2143	3.4		2208	0.6
20th Sunday	0356	0.6	28th Monday	0444	3.1
	1008	3.5		1040	0.9
	1620	0.5		1657	3.4
	2233	3.5		2315	0.7
21st Monday ☉	0442	0.5	29th Tuesday	0547	3.0
	1056	3.7		1151	1.0
	1706	0.3		1803	3.2
	2323	3.5			
22nd Tuesday	0527	0.5	30th Wednesday	0025	0.9
	1144	3.8		0657	3.0
	1752	0.2		1302	1.0
				1918	3.1
23rd Wednesday	0014	3.5	31st Thursday	0130	0.9
	0613	0.5		0804	3.0
	1234	3.8		1408	0.9
	1839	0.2		2026	3.1

Belfast Harbour

February 2019

	Time	Metres		Time	Metres
1st Friday	0229	0.9	8th Friday	0107	3.2
	0901	3.1		0653	0.6
	1509	0.8		1314	3.4
	2122	3.2		1922	0.5
2nd Saturday	0319	0.9	9th Saturday	0137	3.1
	0951	3.3		0729	0.6
	1559	0.7		1343	3.4
	2210	3.2		1957	0.6
3rd Sunday	0400	0.8	10th Sunday	0211	3.1
	1034	3.4		0807	0.6
	1639	0.6		1419	3.4
	2253	3.2		2035	0.6
4th Monday	0437	0.8	11th Monday	0251	3.1
	1113	3.5		0848	0.7
	1713	0.6		1500	3.3
	2330	3.2		2117	0.7
5th Tuesday	0511	0.7	12th Tuesday	0337	3.0
	1149	3.5		0934	0.8
	1745	0.6		1548	3.2
				2207	0.8
6th Wednesday	0504	3.2	13th Wednesday	0432	3.0
	0544	0.7		1028	1.0
	1221	3.5		1647	3.0
	1816	0.6		2308	0.9
7th Thursday	0007	3.2	14th Thursday	0538	2.9
	0618	0.7		1134	1.1
	1249	3.5		1802	3.0
	1848	0.6			
15th Friday			15th Friday	0034	1.0
				0647	2.9
				1307	1.0
				1917	3.0

All times are GMT.



Tide Tables 2019

	Time	Metres		Time	Metres
16th Saturday	0157	0.9	24th Sunday	0225	3.3
	0755	3.0		0815	0.4
	1423	0.8		1443	3.7
	2028	3.1		2040	0.4
17th Sunday	0255	0.7	25th Monday	0314	3.2
	0857	3.2		0906	0.6
	1519	0.6		1533	3.5
	2129	3.2		2131	0.6
18th Monday	0345	0.6	26th Tuesday ☾	0403	3.1
	0951	3.5		1004	0.7
	1609	0.3		1625	3.3
	2222	3.4		2233	0.8
19th Tuesday ☉	0431	0.4	27th Wednesday	0457	3.0
	1041	3.6		1118	0.9
	1655	0.2		1723	3.1
	2311	3.4		2349	1.0
20th Wednesday	0515	0.4	28th Thursday	0604	2.9
	1129	3.8		1232	1.0
	1739	0.1		1842	2.9
	2359	3.4			
21st Thursday	0559	0.3			
	1217	3.8			
	1823	0.0			
22nd Friday	0048	3.4			
	0643	0.3			
	1306	3.8			
	1907	0.1			
23rd Saturday	0137	3.3			
	0728	0.4			
	1354	3.8			
	1952	0.2			

Belfast Harbour

March 2019

	Time	Metres		Time	Metres
1st Friday	0058	1.1	8th Friday	0012	3.1
	0732	2.9		0555	0.6
	1341	0.9		1219	3.3
	2005	2.9		1821	0.5
2nd Saturday	0202	1.1	9th Saturday	0034	3.2
	0838	3.0		0628	0.5
	1445	0.8		1238	3.4
	2105	3.0		1853	0.5
3rd Sunday	0257	1.0	10th Sunday	0100	3.2
	0930	3.2		0702	0.5
	1538	0.7		1310	3.4
	2152	3.0		1926	0.5
4th Monday	0340	0.8	11th Monday	0135	3.2
	1013	3.3		0737	0.5
	1617	0.6		1349	3.4
	2233	3.1		2002	0.5
5th Tuesday	0416	0.7	12th Tuesday	0215	3.2
	1052	3.4		0816	0.5
	1648	0.5		1431	3.3
	2309	3.1		2043	0.6
6th Wednesday	0449	0.7	13th Wednesday	0300	3.1
	1126	3.4		0901	0.7
	1719	0.5		1520	3.2
	2342	3.1		2132	0.8
7th Thursday	0522	0.6	14th Thursday	0353	3.0
	1157	3.4		0954	0.8
	1750	0.5		1621	3.0
				2232	1.0
			15th Friday	0459	2.9
				1101	0.9
				1737	2.9
				2358	1.1

All times are GMT.



Clocks go forward by 1 hour on the 31st March 2019 at 01:00hrs. Changing Local Time (LT) from Greenwich Mean Time (GMT) to British Summer Time (BST). Please add 1 hour to Tide Table times to convert to Local Time (British Summer Time).

	Time	Metres		Time	Metres
16th Saturday	0614	2.9	24th Sunday	0112	3.4
	1245	0.9		0705	0.3
	1857	2.9		1331	3.7
				1924	0.3
17th Sunday	0138	1.0	25th Monday	0157	3.3
	0729	3.0		0749	0.4
	1407	0.7		1418	3.6
	2015	3.0		2008	0.4
18th Monday	0240	0.8	26th Tuesday	0241	3.3
	0838	3.2		0836	0.5
	1505	0.4		1506	3.4
	2119	3.2		2056	0.7
19th Tuesday	0331	0.6	27th Wednesday	0326	3.2
	0935	3.4		0931	0.7
	1554	0.2		1555	3.2
	2209	3.3		2150	0.9
20th Wednesday	0418	0.4	28th Thursday	0415	3.0
	1024	3.6		1043	0.8
	1639	0.1		1649	3.0
	2255	3.4		2305	1.1
21st Thursday	0501	0.3	29th Friday	0511	2.9
	1110	3.7		1159	0.9
	1721	0.0		1756	2.8
	2341	3.4			
22nd Friday	0542	0.3	30th Saturday	0021	1.2
	1157	3.8		0628	2.8
	1802	0.0		1308	0.9
				1937	2.7
23rd Saturday	0026	3.4	31st Sunday	0127	1.2
	0623	0.3		0805	2.9
	1244	3.8		1411	0.8
	1842	0.1		2040	2.8

Belfast Harbour

April 2019

	Time	Metres		Time	Metres
1st Monday	0225	1.0	8th Monday	0029	3.3
	0901	3.0		0636	0.4
	1504	0.7		1242	3.4
	2127	3.0		1858	0.5
2nd Tuesday	0312	0.9	9th Tuesday	0106	3.3
	0945	3.2		0711	0.4
	1544	0.5		1324	3.3
	2206	3.1		1936	0.5
3rd Wednesday	0350	0.8	10th Wednesday	0149	3.3
	1022	3.3		0752	0.5
	1617	0.5		1410	3.3
	2241	3.1		2019	0.6
4th Thursday	0423	0.7	11th Thursday	0236	3.2
	1055	3.3		0838	0.6
	1649	0.4		1504	3.1
	2312	3.2		2110	0.8
5th Friday	0456	0.6	12th Friday	0329	3.1
	1124	3.3		0934	0.7
	1720	0.4		1608	3.0
	2340	3.2		2212	1.0
6th Saturday	0529	0.5	13th Saturday	0434	3.0
	1141	3.3		1046	0.8
	1753	0.4		1723	2.8
				2341	1.1
7th Sunday	0000	3.2	14th Sunday	0550	3.0
	0602	0.5		1229	0.8
	1205	3.3		1845	2.8
	1825	0.4			
			15th Monday	0116	1.0
				0709	3.0
				1347	0.6
				2004	3.0

All times are GMT, add 1 hour during Daylight Savings Time.



Tide Tables 2019

	Time	Metres		Time	Metres
16th Tuesday	0220	0.8	24th Wednesday	0211	3.4
	0820	3.2		0812	0.5
	1445	0.4		1439	3.3
	2104	3.2		2026	0.8
17th Wednesday	0313	0.6	25th Thursday	0255	3.3
	0917	3.5		0903	0.7
	1534	0.2		1527	3.1
	2152	3.3		2115	1.0
18th Thursday	0400	0.5	26th Friday	0341	3.2
	1005	3.6		1007	0.8
	1618	0.1		1618	2.9
	2237	3.4		2217	1.1
19th Friday	0443	0.4	27th Saturday	0432	3.0
	1051	3.7		1122	0.9
	1659	0.1		1717	2.8
	2320	3.4		2335	1.3
20th Saturday	0524	0.3	28th Sunday	0533	2.9
	1136	3.7		1229	0.9
	1738	0.2		1831	2.7
21st Sunday	0004	3.4	29th Monday	0044	1.2
	0603	0.3		0650	2.9
	1222	3.7		1330	0.8
	1818	0.3		1958	2.8
22nd Monday	0047	3.4	30th Tuesday	0144	1.1
	0644	0.4		0815	2.9
	1308	3.6		1423	0.7
	1858	0.4		2048	2.9
23rd Tuesday	0129	3.4			
	0727	0.4			
	1353	3.4			
	1941	0.6			


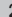
Belfast Harbour

May 2019

	Time	Metres		Time	Metres
1st Wednesday	0235	1.0	8th Wednesday	0046	3.4
	0904	3.1		0653	0.4
	1506	0.6		1306	3.3
	2128	3.1		1918	0.6
2nd Thursday	0317	0.8	9th Thursday	0131	3.4
	0943	3.2		0737	0.5
	1543	0.5		1357	3.3
	2203	3.2		2005	0.7
3rd Friday	0353	0.7	10th Friday	0221	3.4
	1016	3.3		0827	0.5
	1617	0.4		1455	3.1
	2236	3.2		2100	0.9
4th Saturday	0428	0.6	11th Saturday	0316	3.3
	1045	3.3		0927	0.6
	1650	0.4		1601	3.0
	2305	3.3		2206	1.0
5th Sunday	0502	0.5	12th Sunday	0419	3.2
	1108	3.3		1040	0.7
	1724	0.4		1716	2.9
	2331	3.4		2325	1.1
6th Monday	0537	0.5	13th Monday	0531	3.1
	1139	3.4		1207	0.7
	1759	0.5		1836	2.9
7th Tuesday	0004	3.4	14th Tuesday	0046	1.0
	0613	0.4		0649	3.2
	1220	3.4		1321	0.5
	1836	0.5		1946	3.0
			15th Wednesday	0153	0.8
				0759	3.3
				1420	0.4
				2043	3.2

All times are GMT, add 1 hour during Daylight Savings Time.

Tide Tables 2019

	Time	Metres		Time	Metres
16th Thursday	0250	0.7	24th Friday	0227	3.4
	0856	3.5		0837	0.7
	1510	0.3		1459	3.1
	2132	3.3		2045	1.0
17th Friday	0339	0.6	25th Saturday	0311	3.3
	0946	3.6		0929	0.8
	1555	0.2		1548	3.0
	2217	3.4		2135	1.1
18th Saturday 	0424	0.5	26th Sunday 	0359	3.2
	1032	3.6		1033	0.9
	1636	0.3		1642	2.8
	2301	3.4		2235	1.2
19th Sunday	0507	0.4	27th Monday	0453	3.0
	1117	3.6		1142	0.9
	1716	0.4		1741	2.8
	2343	3.4		2346	1.2
20th Monday	0548	0.4	28th Tuesday	0554	2.9
	1201	3.5		1245	0.9
	1756	0.5		1845	2.8
21st Tuesday	0024	3.5	29th Wednesday	0053	1.2
	0628	0.5		0700	2.9
	1245	3.4		1339	0.8
	1836	0.6		1946	2.9
22nd Wednesday	0105	3.5	30th Thursday	0150	1.1
	0710	0.5		0803	3.0
	1328	3.3		1426	0.7
	1917	0.8		2037	3.1
23rd Thursday	0145	3.4	31st Friday	0238	0.9
	0752	0.6		0853	3.1
	1412	3.2		1507	0.6
	1959	0.9		2120	3.2

Belfast Harbour



June 2019

	Time	Metres		Time	Metres
1st Saturday	0320	0.8	8th Saturday	0211	3.5
	0934	3.2		0822	0.4
	1544	0.5		1450	3.2
	2158	3.3		2054	0.8
2nd Sunday	0359	0.7	9th Sunday	0306	3.5
	1010	3.3		0921	0.5
	1620	0.5		1556	3.1
	2233	3.4		2156	0.9
3rd Monday	0437	0.6	10th Monday	0405	3.4
	1044	3.4		1028	0.5
	1658	0.5		1706	3.0
	2308	3.5		2303	0.9
4th Tuesday	0516	0.5	11th Tuesday	0512	3.3
	1121	3.4		1140	0.6
	1737	0.5		1817	3.0
	2346	3.5			
5th Wednesday	0557	0.4	12th Wednesday	0014	0.9
	1205	3.4		0626	3.3
	1820	0.6		1251	0.5
				1921	3.1
6th Thursday	0031	3.5	13th Thursday	0122	0.9
	0641	0.4		0735	3.3
	1255	3.3		1352	0.5
	1906	0.7		2019	3.2
7th Friday	0119	3.6	14th Friday	0223	0.8
	0729	0.4		0835	3.4
	1350	3.3		1445	0.5
	1958	0.7		2111	3.3
8th Saturday	0119	3.6	15th Saturday	0318	0.7
	0729	0.4		0928	3.5
	1350	3.3		1533	0.5
	1958	0.7		2159	3.3

All times are GMT, add 1 hour during Daylight Savings Time.



Tide Tables 2019

	Time	Metres		Time	Metres
16th Sunday	0407	0.6	24th Monday	0325	3.3
	1016	3.5		0936	0.8
	1616	0.5		1608	2.9
	2243	3.4		2147	1.0
17th Monday 	0452	0.5	25th Tuesday 	0412	3.2
	1101	3.4		1030	0.9
	1658	0.6		1701	2.9
	2326	3.4		2241	1.1
18th Tuesday	0534	0.5	26th Wednesday	0505	3.0
	1144	3.4		1136	0.9
	1738	0.7		1757	2.9
				2342	1.2
19th Wednesday	0005	3.5	27th Thursday	0605	3.0
	0614	0.6		1244	0.9
	1225	3.3		1854	2.9
	1816	0.8			
20th Thursday	0043	3.5	28th Friday	0051	1.1
	0653	0.6		0707	3.0
	1305	3.2		1341	0.8
	1855	0.8		1948	3.0
21st Friday	0121	3.5	29th Saturday	0154	1.0
	0731	0.6		0805	3.1
	1347	3.2		1430	0.7
	1933	0.9		2038	3.2
22nd Saturday	0201	3.5	30th Sunday	0247	0.9
	0809	0.7		0857	3.2
	1431	3.1		1514	0.6
	2014	0.9		2123	3.3
23rd Sunday	0242	3.4			
	0850	0.7			
	1518	3.0			
	2058	1.0			

Belfast Harbour



July 2019

	Time	Metres		Time	Metres
1st Monday	0333	0.7	8th Monday	0253	3.6
	0942	3.3		0905	0.3
	1555	0.6		1541	3.1
	2206	3.4		2136	0.8
2nd Tuesday	0417	0.6	9th Tuesday	0349	3.6
	1025	3.4		1005	0.4
	1637	0.5		1643	3.1
	2247	3.5		2237	0.8
3rd Wednesday	0500	0.5	10th Wednesday	0449	3.4
	1109	3.4		1111	0.5
	1720	0.5		1748	3.0
	2331	3.6		2344	0.9
4th Thursday	0545	0.4	11th Thursday	0557	3.3
	1156	3.4		1220	0.6
	1806	0.6		1853	3.0
5th Friday	0018	3.6	12th Friday	0053	0.9
	0630	0.3		0709	3.3
	1248	3.3		1326	0.7
	1854	0.6		1954	3.1
6th Saturday	0108	3.7	13th Saturday	0200	0.8
	0719	0.3		0815	3.3
	1343	3.3		1423	0.7
	1946	0.6		2050	3.2
7th Sunday	0200	3.7	14th Sunday	0300	0.8
	0810	0.3		0912	3.3
	1441	3.2		1514	0.7
	2040	0.7		2142	3.3
			15th Monday	0354	0.7
				1003	3.3
				1600	0.7
				2228	3.4

All times are GMT, add 1 hour during Daylight Savings Time.



Tide Tables 2019

	Time	Metres		Time	Metres
16th Tuesday 	0440	0.6	24th Wednesday	0322	3.2
	1049	3.3		0937	0.8
	1641	0.8		1617	3.0
	2311	3.4		2155	1.0
17th Wednesday	0521	0.6	25th Thursday 	0407	3.1
	1130	3.2		1028	0.9
	1719	0.8		1710	3.0
	2349	3.5		2248	1.1
18th Thursday	0558	0.6	26th Friday	0505	3.0
	1208	3.2		1131	0.9
	1755	0.8		1806	2.9
19th Friday	0024	3.5		27th Saturday	0614
	0632	0.6	1249		0.9
	1244	3.1	1903		3.0
	1830	0.8	28th Sunday		0109
20th Saturday	0058	3.5		0722	3.0
	0704	0.6		1357	0.9
	1321	3.1		1959	3.1
	1905	0.8	29th Monday	0218	0.9
21st Sunday	0133	3.4		0824	3.1
	0737	0.6		1450	0.7
	1401	3.1		2052	3.3
	1943	0.8	30th Tuesday	0313	0.7
22nd Monday	0209	3.4		0920	3.2
	0813	0.6		1537	0.6
	1443	3.1		2141	3.4
	2024	0.8	31st Wednesday	0402	0.5
23rd Tuesday	0245	3.3		1010	3.3
	0852	0.7		1621	0.6
	1528	3.0		2228	3.6
	2107	0.9			

Belfast Harbour

August 2019

	Time	Metres		Time	Metres
1st Thursday ●	0447 1057 1706 2315	0.4 3.4 0.5 3.7	8th Thursday	0423 1037 1711 2316	3.5 0.6 3.1 0.9
2nd Friday	0531 1145 1751	0.2 3.4 0.5	9th Friday	0525 1150 1818	3.3 0.8 3.0
3rd Saturday	0003 0616 1235 1837	3.7 0.2 3.4 0.5	10th Saturday	0029 0640 1301 1928	0.9 3.1 0.9 3.0
4th Sunday	0053 0702 1328 1926	3.8 0.1 3.3 0.5	11th Sunday	0140 0756 1403 2031	0.9 3.1 0.9 3.1
5th Monday	0144 0750 1421 2016	3.8 0.2 3.3 0.6	12th Monday	0246 0859 1458 2125	0.8 3.1 0.9 3.3
6th Tuesday	0235 0840 1516 2109	3.7 0.3 3.2 0.7	13th Tuesday	0343 0950 1544 2212	0.7 3.2 0.9 3.4
7th Wednesday ◐	0328 0935 1612 2208	3.6 0.4 3.1 0.8	14th Wednesday	0428 1035 1623 2253	0.6 3.2 0.8 3.4
			15th Thursday ○	0505 1114 1657 2330	0.6 3.2 0.8 3.5

All times are GMT, add 1 hour during Daylight Savings Time.



Tide Tables 2019

	Time	Metres		Time	Metres
16th Friday	0535	0.6	24th Saturday	0418	3.1
	1149	3.2		1036	1.0
	1730	0.8		1715	3.0
			2305	1.1	
17th Saturday	0003	3.5	25th Sunday	0530	2.9
	0604	0.6		1151	1.1
	1222	3.1		1821	3.0
	1803	0.8			
18th Sunday	0033	3.4	26th Monday	0027	1.1
	0634	0.6		0648	2.9
	1253	3.1		1330	1.0
	1836	0.8		1925	3.1
19th Monday	0100	3.4	27th Tuesday	0158	1.0
	0705	0.6		0759	3.0
	1326	3.1		1431	0.9
	1912	0.7		2026	3.2
20th Tuesday	0129	3.4	28th Wednesday	0257	0.7
	0738	0.6		0903	3.2
	1400	3.2		1522	0.7
	1949	0.7		2121	3.4
21st Wednesday	0201	3.4	29th Thursday	0347	0.4
	0814	0.6		0956	3.3
	1438	3.1		1607	0.6
	2029	0.8		2210	3.6
22nd Thursday	0239	3.3	30th Friday	0432	0.2
	0854	0.7		1043	3.4
	1521	3.1		1650	0.5
	2114	0.9		2258	3.8
23rd Friday	0323	3.2	31st Saturday	0514	0.1
	0940	0.8		1130	3.5
	1614	3.0		1732	0.5
	2204	1.0		2345	3.8

Belfast Harbour

September 2019

	Time	Metres		Time	Metres
			8th Sunday	0005 1.0 0609 3.0 1233 1.2 1857 3.0	
1st Sunday	0556 0.1 1217 3.5 1816 0.4		9th Monday	0118 1.0 0739 2.9 1340 1.2 2009 3.1	
2nd Monday	0033 3.9 0639 0.1 1306 3.4 1901 0.5		10th Tuesday	0227 0.9 0844 3.0 1439 1.1 2104 3.2	
3rd Tuesday	0123 3.8 0724 0.2 1356 3.4 1948 0.5		11th Wednesday	0326 0.7 0934 3.1 1526 1.0 2151 3.4	
4th Wednesday	0214 3.8 0810 0.4 1446 3.3 2039 0.6		12th Thursday	0409 0.6 1016 3.2 1602 0.9 2231 3.4	
5th Thursday	0304 3.6 0901 0.6 1538 3.2 2136 0.8		13th Friday	0440 0.6 1052 3.2 1633 0.8 2306 3.5	
6th Friday	0357 3.4 0959 0.8 1632 3.1 2248 0.9		14th Saturday	0506 0.6 1126 3.2 1704 0.8 2338 3.4	
7th Saturday	0456 3.2 1116 1.1 1736 3.0		15th Sunday	0534 0.6 1155 3.2 1736 0.8	

All times are GMT, add 1 hour during Daylight Savings Time.



Tide Tables 2019

	Time	Metres		Time	Metres
16th Monday	0002	3.4	24th Tuesday	0624	2.9
	0603	0.6		1307	1.2
	1221	3.2		1857	3.1
	1808	0.7			
17th Tuesday	0021	3.4	25th Wednesday	0138	0.9
	0633	0.6		0742	3.0
	1246	3.3		1413	1.0
	1841	0.7		2004	3.3
18th Wednesday	0050	3.4	26th Thursday	0239	0.7
	0705	0.6		0850	3.2
	1318	3.3		1505	0.8
	1917	0.7		2102	3.5
19th Thursday	0126	3.4	27th Friday	0328	0.4
	0739	0.6		0941	3.4
	1356	3.3		1550	0.6
	1955	0.7		2152	3.7
20th Friday	0206	3.4	28th Saturday	0412	0.2
	0818	0.7		1027	3.5
	1439	3.3		1632	0.5
	2039	0.8		2239	3.9
21st Saturday	0252	3.2	29th Sunday	0453	0.1
	0903	0.9		1111	3.6
	1530	3.2		1712	0.5
	2129	1.0		2326	3.9
22nd Sunday	0348	3.1	30th Monday	0533	0.1
	0959	1.1		1156	3.6
	1633	3.1		1753	0.4
	2231	1.1			
23rd Monday	0503	2.9			
	1112	1.2			
	1745	3.0			
	2356	1.1			

Belfast Harbour

October 2019

	Time	Metres		Time	Metres
1st Tuesday	0013	3.9	8th Tuesday	0047	1.1
	0613	0.2		0713	2.8
	1243	3.5		1307	1.4
	1836	0.5		1937	3.1
2nd Wednesday	0102	3.8	9th Wednesday	0155	1.0
	0656	0.4		0820	2.9
	1330	3.5		1408	1.3
	1921	0.6		2037	3.2
3rd Thursday	0151	3.7	10th Thursday	0253	0.8
	0741	0.5		0909	3.1
	1417	3.4		1457	1.1
	2011	0.7		2123	3.3
4th Friday	0241	3.6	11th Friday	0335	0.7
	0828	0.8		0949	3.2
	1506	3.4		1534	1.0
	2106	0.8		2202	3.4
5th Saturday	0332	3.3	12th Saturday	0406	0.6
	0923	1.0		1024	3.3
	1556	3.2		1606	0.9
	2217	1.0		2237	3.5
6th Sunday	0428	3.1	13th Sunday	0434	0.6
	1035	1.3		1056	3.3
	1653	3.1		1637	0.8
	2336	1.1		2307	3.4
7th Monday	0535	2.9	14th Monday	0503	0.6
	1157	1.4		1125	3.4
	1808	3.0		1709	0.8
				2328	3.4
8th Tuesday			15th Tuesday	0533	0.6
				1148	3.4
				1742	0.7
				2347	3.5

All times are GMT, add 1 hour during Daylight Savings Time.



Clocks go back by 1 hour on the 27th October 2019 at 02:00hrs. Changing Local Time (LT) from British Summer Time (BST) to Greenwich Mean Time (GMT).

	Time	Metres		Time	Metres
16th Wednesday	0604 1213 1815	0.7 3.4 0.7	24th Thursday	0112 0728 1349 1944	0.9 3.0 1.1 3.4
17th Thursday	0019 0635 1247 1849	3.5 0.7 3.5 0.7	25th Friday	0214 0833 1443 2044	0.6 3.2 0.9 3.6
18th Friday	0059 0711 1327 1928	3.5 0.7 3.5 0.7	26th Saturday	0305 0924 1530 2134	0.4 3.4 0.7 3.8
19th Saturday	0143 0751 1412 2013	3.4 0.8 3.4 0.8	27th Sunday	0349 1009 1612 2221	0.3 3.6 0.6 3.9
20th Sunday	0233 0838 1503 2106	3.3 1.0 3.3 0.9	28th Monday	0429 1052 1653 2307	0.3 3.6 0.5 3.9
21st Monday	0333 0937 1605 2211	3.1 1.2 3.2 1.0	29th Tuesday	0509 1136 1734 2354	0.3 3.6 0.5 3.9
22nd Tuesday	0447 1052 1718 2338	3.0 1.3 3.1 1.1	30th Wednesday	0550 1220 1816	0.4 3.6 0.5
23rd Wednesday	0607 1238 1833	2.9 1.3 3.2	31st Thursday	0041 0631 1305 1901	3.8 0.6 3.6 0.6

Belfast Harbour

November 2019

	Time	Metres		Time	Metres
1st Friday	0130	3.6	8th Friday	0207	0.9
	0715	0.8		0833	3.0
	1350	3.6		1417	1.2
	1949	0.7		2045	3.2
2nd Saturday	0218	3.5	9th Saturday	0252	0.8
	0802	0.9		0914	3.2
	1436	3.5		1500	1.1
	2042	0.8		2126	3.3
3rd Sunday	0307	3.3	10th Sunday	0328	0.7
	0852	1.1		0949	3.3
	1524	3.4		1536	1.0
	2146	1.0		2202	3.4
4th Monday	0359	3.1	11th Monday	0401	0.7
	0953	1.3		1023	3.4
	1616	3.2		1610	0.9
	2259	1.1		2234	3.4
5th Tuesday	0458	2.9	12th Tuesday	0433	0.7
	1110	1.5		1054	3.5
	1716	3.1		1644	0.8
				2259	3.5
6th Wednesday	0008	1.1	13th Wednesday	0505	0.7
	0615	2.8		1121	3.5
	1223	1.5		1718	0.7
	1833	3.1		2324	3.5
7th Thursday	0111	1.0	14th Thursday	0539	0.7
	0740	2.9		1149	3.6
	1325	1.4		1754	0.7
	1953	3.1		2359	3.5
8th Friday	0111	1.0	15th Friday	0614	0.8
	0740	2.9		1225	3.6
	1325	1.4		1831	0.7
	1953	3.1			

All times are GMT.



Tide Tables 2019

	Time	Metres		Time	Metres
16th Saturday	0041	3.5	24th Sunday	0238	0.5
	0652	0.8		0904	3.4
	1308	3.6		1507	0.8
	1912	0.7		2117	3.7
17th Sunday	0129	3.4	25th Monday	0324	0.4
	0736	0.9		0950	3.5
	1355	3.5		1553	0.7
	1959	0.8		2205	3.8
18th Monday	0223	3.3	26th Tuesday	0408	0.5
	0827	1.1		1035	3.6
	1448	3.5		1637	0.6
	2055	0.8		2252	3.8
19th Tuesday	0324	3.1	27th Wednesday	0450	0.5
	0927	1.2		1119	3.7
	1547	3.4		1721	0.6
	2201	0.9		2338	3.7
20th Wednesday	0434	3.0	28th Thursday	0531	0.6
	1040	1.3		1202	3.7
	1655	3.3		1804	0.6
	2319	0.9			
21st Thursday	0553	3.0	29th Friday	0024	3.6
	1203	1.2		0613	0.8
	1809	3.3		1245	3.7
				1847	0.7
22nd Friday	0039	0.8	30th Saturday	0110	3.5
	0709	3.1		0655	0.9
	1316	1.1		1328	3.6
	1922	3.4		1933	0.7
23rd Saturday	0144	0.6			
	0812	3.3			
	1416	0.9			
	2024	3.6			

Belfast Harbour

December 2019

	Time	Metres		Time	Metres
1st Sunday	0155 0739 1410 2020	3.4 1.0 3.6 0.8	8th Sunday	0209 0824 1421 2040	0.9 3.1 1.2 3.2
2nd Monday	0242 0825 1455 2112	3.2 1.1 3.5 0.9	9th Monday	0251 0909 1504 2124	0.8 3.3 1.0 3.3
3rd Tuesday	0330 0915 1543 2212	3.1 1.2 3.4 1.0	10th Tuesday	0329 0949 1543 2202	0.8 3.4 0.9 3.4
4th Wednesday	0423 1012 1636 2318	3.0 1.4 3.2 1.1	11th Wednesday	0405 1026 1622 2236	0.7 3.5 0.8 3.4
5th Thursday	0521 1120 1735	2.9 1.4 3.1	12th Thursday	0442 1059 1700 2308	0.7 3.6 0.7 3.5
6th Friday	0022 0625 1231 1840	1.1 2.9 1.4 3.1	13th Friday	0520 1133 1739 2346	0.7 3.6 0.7 3.4
7th Saturday	0119 0730 1331 1946	1.0 3.0 1.3 3.1	14th Saturday	0559 1211 1821	0.8 3.7 0.6
			15th Sunday	0030 0642 1255 1905	3.4 0.8 3.7 0.6

All times are GMT.



Tide Tables 2019

	Time	Metres		Time	Metres
16th Monday	0120	3.4	24th Tuesday	0304	0.6
	0729	0.9		0934	3.4
	1343	3.7		1539	0.7
	1954	0.6		2152	3.6
17th Tuesday	0214	3.3	25th Wednesday	0352	0.6
	0820	0.9		1022	3.5
	1435	3.6		1627	0.7
	2048	0.6		2241	3.6
18th Wednesday	0314	3.2	26th Thursday	0436	0.7
	0918	1.0		1107	3.6
	1531	3.5		1712	0.6
	2148	0.7		2326	3.5
19th Thursday	0419	3.1	27th Friday	0518	0.8
	1020	1.1		1149	3.6
	1633	3.5		1755	0.6
	2255	0.7			
20th Friday	0531	3.1	28th Saturday	0010	3.4
	1129	1.1		0558	0.8
	1743	3.4		1230	3.6
				1836	0.6
21st Saturday	0006	0.7	29th Sunday	0052	3.3
	0643	3.1		0638	0.9
	1241	1.1		1309	3.6
	1856	3.4		1916	0.7
22nd Sunday	0113	0.7	30th Monday	0133	3.3
	0747	3.2		0717	0.9
	1347	1.0		1348	3.6
	2002	3.5		1955	0.7
23rd Monday	0212	0.6	31st Tuesday	0215	3.2
	0843	3.3		0756	1.0
	1446	0.8		1428	3.5
	2100	3.5		2035	0.8

Belfast Harbour

Tide Tables 2019

Contact Numbers

Belfast Harbour

Harbour Office

Tel: 028 9055 4422

Port Operations

Tel: 028 9055 3014

Port Control

VHF Channel 12 

Harbour Police

Tel: 028 9055 3000

River Lagan (DSD)


River Manager

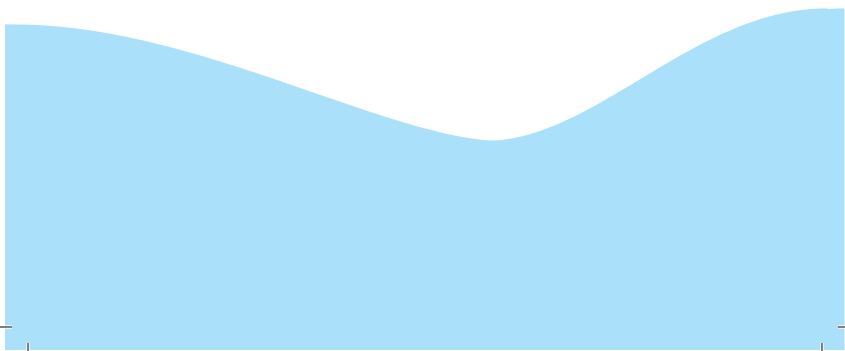
Tel: 028 9027 7642

Weir Control / River Warden

Tel: 028 9031 5304

Weir Control

VHF Channel 71 
Callsign "Lagan Weir"



Belfast Harbour

Harbour Office

Corporation Square

Belfast BT1 3AL

+44 28 9055 4422

belfast-harbour.co.uk

