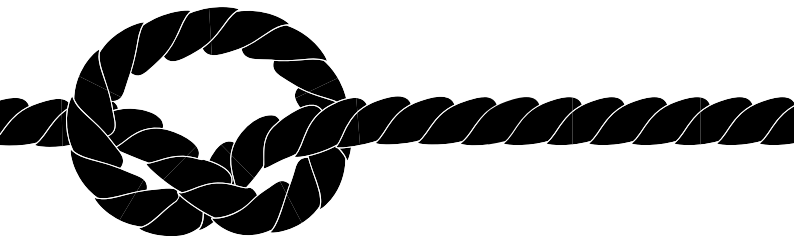




**FREE**



**17**



**Belfast**  
**Harbour**

Tide Tables **2017**



# Safety First on Belfast Lough

Welcome to  
**Belfast Harbour**

No Unauthorised Entry beyond this point

Recreational Craft Must Contact "Belfast Harbour Radio"  
on **VHF Channel 12** for traffic clearance to proceed

All users of the Lough are expected to operate in a safe & responsible manner.

Users are required to always comply with international collision regulations.

Users are reminded to check the sailing & arrival times of ferries in the area.

Users are advised to be mindful of the signage around the Lough highlighting the possibility of unexpected wavewash generated by shipping using Belfast Harbour.



**WARNING**  
Beware of unexpected waves and spray  
when launching or recovering craft



**WARNING**  
Beware of unexpected waves  
and spray

17



## Welcome to Belfast Harbour

I am pleased to present the 2017 Tide Tables for Belfast Harbour.

I trust you will find the information contained within to be beneficial for your safe enjoyment of Belfast Harbour.

May I take this opportunity to draw your attention to the Notice to Mariners No.1 of 2017. This notice is a summary of all notices in force at the start of 2017 and can be found on our website [www.belfast-harbour.co.uk](http://www.belfast-harbour.co.uk).

I encourage you to visit the website regularly to acquaint yourself with the most up-to-date navigational safety information.

I wish you a safe and enjoyable visit to Belfast Harbour.

Captain K G Allen  
Belfast Harbour Master



## **Safety First**

### **Lifejackets**

---

#### **“Lifejackets save lives” (MCA, 2007)**

Notice is hereby given that it is strongly recommended that all recreational boat users in Belfast Harbour wear correctly maintained, fit for purpose Lifejackets and Buoyancy Aids at all times when at sea.

On 4th July 2008 an expert panel review, comprising of staff from the RYA, RNLI, MAIB, and industry, was convened to analyse fatal maritime incidents in 2007 and assess whether a lifejacket would have made a difference in saving a person's life.

After reviewing each incident, the panel had to choose from whether it was Probably, Possibly or Unlikely that the person would have been saved by wearing a lifejacket that was suitably maintained, correctly worn and fit for purpose, or alternatively, that it was Not Appropriate for the person to have been wearing a lifejacket in the particular incident under review.

From a total of 133 fatalities, 91 were deemed as Not Appropriate for the casualty to be wearing a lifejacket. These deaths covered recreational activities such as Diving and Coastal Walking where there is no call for the participant to wear a lifejacket, and other 'misadventures' where a person ended up drowning despite not taking part in any maritime activity.

Of the remaining 42 fatalities, it was agreed that in 29 cases (69%), a lifejacket would have had a more positive outcome, either probably or possibly saving a person's life.

(MCA, 2007)



Belfast Harbour radio can be contacted via



**Channel 12VHF**



## Information for Leisure Craft visiting Belfast Harbour

Belfast Harbour Marina located in Abercorn Basin welcomes leisure craft.

This facility consists of 300m of fully serviced recreational pontoons which are available for visiting and seasonal berthing.

The maximum available depth in the Marina is 4m. Vessels greater than 4m draught or 20m length overall wishing to visit Belfast should contact the Harbour Master's Office prior to arrival. For more information on visiting the Marina, including tariffs, please visit the website - [www.belfast-harbour.co.uk/port/marina](http://www.belfast-harbour.co.uk/port/marina)

The following information has been provided for the benefit of recreational users, however current Notice to Mariners and guides should always be consulted on Belfast Harbour's website [www.belfast-harbour.co.uk/port/navigation-pilotage/notice-to-mariners](http://www.belfast-harbour.co.uk/port/navigation-pilotage/notice-to-mariners)



# Belfast Harbour

## Code of Conduct

### 1 Conduct of Transits to and from Berths.

- 1.1 Vessels transiting to and from berths must do so under power, yachts should have their sails down.
- 1.2 No vessels are permitted to be underway inside Harbour Limits during hours of darkness, unless vessels are fitted with the appropriate navigation lights as prescribed by the Collision Regulations.
- 1.3 Recreational craft not fitted with operational radar are not normally permitted to make transits of the Inner Harbour or Victoria Channel when visibility is less than 0.5 nautical miles.
- 1.4 Leisure craft are not permitted in Herdman Channel, or Musgrave Channel unless navigating to the Connswater.
- 1.5 Except where these Guidelines otherwise require; The International Regulations for Prevention of Collision at Sea (Collision Regulations) apply throughout Belfast Harbour Limits.

In particular, attention is drawn to Rule 9, narrow channels – vessels should keep as near to the outer limit of the channel or fairway which lies on her starboard side as is safe and practicable.

- 1.6 The Master of a leisure craft shall ensure it is manoeuvred in a manner so as not to cause injury, nuisance, excessive wash, damage to property, loss of life, and must keep well clear of vessels fishing, dredging or otherwise working whilst underway.
- 1.7 All vessels must be equipped and manned to undertake all transits safely.
- 1.8 All vessels should carry Admiralty Chart 1752 or equivalent.
- 1.9 All vessels must carry sufficient number and type of lifejackets for those on board.
- 1.10 No sightseeing or stopping is permitted during transit.
- 1.11 Leisure craft must proceed at a safe and appropriate speed, and not exceed a maximum speed of 8 knots to South-West of the Twin

Beacons unless with prior consent of the Harbour Master.

- 1.12 Craft must maintain minimum safe speed when navigating near small craft moorings.
- 1.13 The Master of any vessel must comply with any temporary speed restrictions imposed by Port Control.

### 2 Compliance with Directions

The Master of any vessel shall comply with any direction given to him by the Harbour Master or an officer designated by the Harbour Master to do so on his behalf.

### 3 Priority of Vessels within Belfast Harbour Limits

- 3.1 Leisure craft shall not impede the passage of any vessel greater than 20m in length navigating within the inner Harbour or Victoria Channel.
- 3.2 Leisure craft, which are not confined to the fairway, shall not make use of the fairway so as to obstruct other vessels which can navigate only within the fairway, and when navigating across the Channel or through the inner Harbour shall do so by the shortest route that will avoid such obstruction.
- 3.3 Any vessel upon encountering a vessel exhibiting the signals prescribed by the Collision Regulations for vessels constrained by their draught, shall afford such vessels a minimum distance of 5 cables ahead and 2 cables astern.

### 4 Carriage of VHF / Mobile Telephone & Communication with Port Control

- 4.1 Belfast Harbour strongly recommend all vessels navigating within Harbour Limits to carry VHF radio. Where carried, VHF radio watch is to be maintained on Ch 12 when within port limits.
- 4.2 Where no VHF is carried, a mobile telephone should be used in cases of emergency to contact Port Control.
- 4.3 Port Control, callsign "Belfast Harbour Radio", maintains a listening watch at all times on VHF channel 12. Port Control is also contactable in case of emergency by telephone on – 028 9055 3504.
- 4.4 Inward vessels must report to Port Control when:
  - Entering the Main Channel, stating location
  - Arriving at their berth
- 4.5 Departing vessels must report to Port Control when:
  - Prior to departing their berth
  - Upon exiting the main channel, stating location
- 4.6 Vessels wishing to cross the Victoria Channel to the South-West of No.2 buoy must contact Port Control.
- 4.7 Any emergencies should be communicated firstly to Belfast Coastguard on VHF Ch 16, and to Port Control.
- 4.8 Vessels should avoid excessive use of VHF Ch. 12 wherever possible.

## 5 Age of Master

No person under the age of 16 years shall steer or navigate within the Harbour any power driven vessel unless in possession of an appropriate RYA qualification or accompanied by a person of 18 years or older.

## 6 Navigation under the influence of Alcohol or Drugs Prohibited

The Master of any vessel shall not move the vessel within Harbour Limits if his ability to do so is impaired by drink or drugs or if the proportion of alcohol in his breath, blood or urine exceeds

- i) In the case of breath, 35 micrograms of alcohol in 100 ml
- ii) In the case of blood, 80 milligrams of alcohol in 100 ml, and
- iii) In the case of urine, 107 milligrams of alcohol in 100 millilitres.

## 7 Public Landings

The Master of a vessel shall not place his vessel or allow it to be in such a situation as to obstruct or interfere with the access to any recognised landing place or leave it moored alongside any such landing place unattended without the permission of the person in charge of that landing place.

## 8 Water Sports

Water Skiing, Wind Surfing, Kite Surfing, Jet Skiing, rowing, canoeing or kayaking are not permitted in the Inner Harbour or Victoria Channel without prior

permission from the Harbour Master.

## 9 Diving / Swimming

- 9.1 No swimming or recreational diving is permitted inside the Inner Harbour or Victoria Channel
- 9.2 Diving elsewhere within Harbour Limits is only permitted with prior consent of the Harbour Master
- 9.3 Those wishing to undertake commercial diving operations should contact Port Operations during office hours.

## 10 Events

Organisers of water based events anywhere inside Harbour Limits are required to provide a minimum of 14 days notice in writing to the Harbour Master, and provide event plans, risk assessments, and evidence of insurance as appropriate.

## 11 Rigging to be Secured

Any vessel when moored within Harbour Limits fitted with a mast shall at all times ensure the rigging is secured so that it does not make undue noise.

## 12 Provision of Proper Fender

The Master and the owner of a vessel shall ensure that she is provided with a sufficient number of fenders of a type that would float in water and a size appropriate to the vessel and, when berthing and leaving or lying at a quay, pontoon, or against other vessels, the Master

shall cause the vessel to be fended off from that quay or those other vessels so as to prevent damage to that quay, pontoons, those other vessels or any other property.

## 13 Access Across Decks

The Master of a vessel alongside a quay, pontoon, or alongside any vessel already berthed within the Harbour shall, if required to do so by the Harbour Master or other authorised officer, give free access across the deck of his vessel for persons and goods to and from vessels berthed alongside his decks.

## 14 Unmooring of Vessels

No person except the Harbour Master or a person acting on behalf of the Harbour Master in pursuance of his duties shall for any purpose whatsoever unmoor or cast off or loose any mooring of any vessel moored within the Harbour without the previous permission of the owner or lawful Master of such a vessel.

## 15 Vessels not to make fast to Unauthorised Objects

The Master of a vessel shall not knowingly cause or permit any person to secure the vessel to any post, quay, ring, tide board, steps, vertical ladder, fender or any other thing or place not assigned for that purpose.

## 16 Fishing within Harbour Limits

- 16.1 No person shall fish or use any fishing apparatus anywhere within the Inner Harbour.
- 16.2 The Master of a vessel shall ensure that no fishing apparatus is placed in or near the Victoria Channel in a manner that could pose a risk of being fouled by any vessel using the Victoria Channel or waters contiguous to it. If the owner of fishing apparatus shall not comply with any direction of the Harbour Master given to remove the apparatus, the Harbour Master may, on giving where reasonably practicable notice, remove such apparatus.

## 17 Registration & Insurance of Leisure Craft Vessels

- 17.1 Every vessel must have their name or ID letters conspicuously marked on it.
- 17.2 Every vessel wishing to navigate within the Inner Harbour or use the Leisure Craft Facilities must have appropriate third party marine insurance to cover a minimum of £2 million.

## 18 Non Displacement Craft

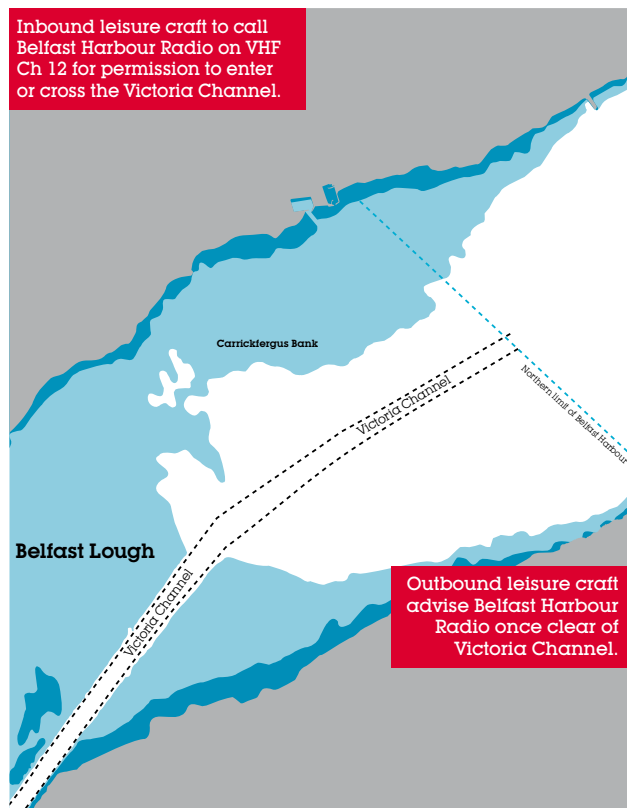
Hovercraft, WIG craft and Seaplanes are not permitted within Harbour Limits without prior permission from the Harbour Master.

## 19 Pontoon Access

- 19.1 The Pontoon should be kept clear of obstructions at all times to maintain a safe means of access.

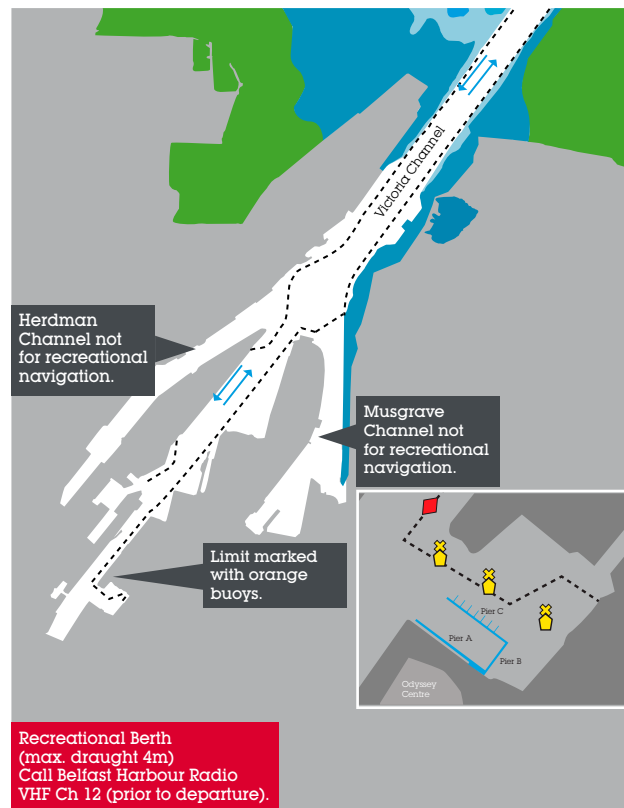
## Belfast Harbour

Tide Tables 2017



For guidance only – do not use for navigation

## Guidance for recreational users



For guidance only – do not use for navigation



# Emergency Contact

## Numbers for recreational users

### Coastguard

VHF Channel 16

Tel +44 (0)28 9146 3933  
or 999

### Belfast Harbour Radio

VHF Channel 12

### Belfast Harbour Office

Tel +44 (0)28 9055 4422

### Port Operations

Tel +44 (0)28 9055 3014

### Belfast Harbour Police

Tel +44 (0)28 9055 3000

### Northern Ireland Fire & Rescue Service

Tel +44 (0)28 9266 4221  
or 999

### Northern Ireland Ambulance Service

Tel 999

Attention is drawn to the Notices to Mariners on Belfast Harbour's website [www.belfast-harbour.co.uk](http://www.belfast-harbour.co.uk); in particular to Notice to Mariners No.1 of 2017.

## Constants

Port	H	M
Ardglass	+0	23
Ayr	+0	56
Ballycastle	-3	20
Bangor	+0	10
Buncrana, Lough Swilly	-5	6
Carlingford Bar	+0	24
Campbelltown	+0	44
Coleraine	-4	3
Corran Narrows	-5	17
Crinan	+5	48
Donaghadee	+0	20
Douglas, IoM	+0	7
Dublin	+0	39
East Tarbert (Lough Fyne)	+0	55
Galway	-6	00
Gigha Sound	+3	31
Heysham	+0	11
Killyleagh, Co. Down	+2	2

Port	H	M
Kyleakin	-4	28
Lamlash	+0	50
Larne	+0	4
Londonderry	-2	53
Mull of Kintyre	-0	24
Newcastle, Dundrum Bay	+0	30
Oban	-5	24
Point of Ayre	+0	3
Portavogie	+0	15
Port Ellen (Islay)	-6	0
Port Patrick	+0	10
Portree	-4	38
Portrush	-4	33
Red Bay	+0	6
Strangford Bar	+0	16
Strangford Quay	+1	52
Tobermory	-5	14
Warrenpoint, Co. Down	+0	30

## Times & Heights of High & Low Waters

---

All times are in (GMT)  
Greenwich Mean Time.

Heights refer to Harbour Datum which  
is also Admiralty Chart Datum.

Tidal predictions for Belfast have been  
computed by The United Kingdom  
Hydrographic Office  
(copyright reserved).

Phases of the Moon are reproduced,  
with permission, from data supplied  
by The United Kingdom  
Hydrographic Office.

## Follow these steps carefully

---

- The International Regulations for the Prevention of Collision at Sea Rules apply throughout the Lough know them and follow them.
- Give early notice of your intentions as ferries approach very quickly.
- Check the ferry times in your area.
- Watch out for the ferry wash, especially when launching or retrieving boats.

For information on winter and summer berthing, please call  
**028 9055 3014** or e-mail [marina@belfast-harbour.co.uk](mailto:marina@belfast-harbour.co.uk)

Further details are also available on the Belfast Harbour website:  
[belfast-harbour.co.uk/port/marina](http://belfast-harbour.co.uk/port/marina)



# Belfast Harbour

Tide Tables 2017

## Levels of Tides

### Above Harbour Datum

	Feet	Meters
Mean High Water, Spring Tides	11.4	3.5
Mean High Water, Neap Tides	9.7	2.9
Mean Low Water, Spring Tides	1.4	0.4
Mean Low Water, Neap Tides	3.5	1.1

### Highest Spring Tide on record

5th January 1991 16.07 4.9

### Average range of tide

(At Spring Tides)	10.0	3.1
(At Neap Tides)	6.2	1.9

Time of High Water at the full and change of the moon, 10h. 35m.

The Tidal current runs at the rate of .33 knot on Spring Tides, and .25 knot on Neap Tides.

### Harbour & ordnance datum

Harbour Datum Level of No.2 Clarendon Dry Dock Sill, which is also Admiralty Chart Datum.



### Ordnance datum (1958)

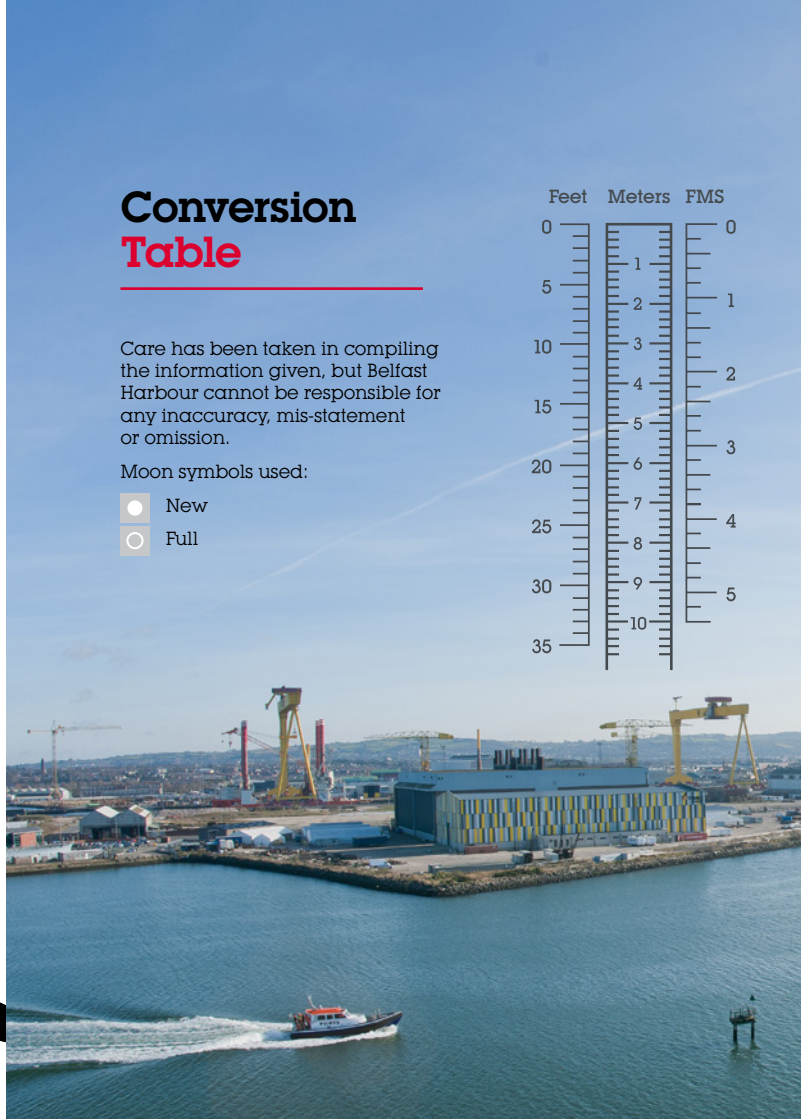
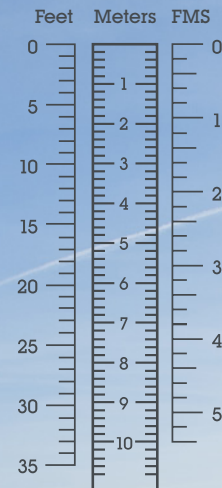
6.61 feet (2.0 metres) above Harbour datum.

## Conversion Table

Care has been taken in compiling the information given, but Belfast Harbour cannot be responsible for any inaccuracy, mis-statement or omission.

Moon symbols used:

-  New
-  Full



# Belfast Harbour

Tide Tables 2017

## January 2017

	Time	Metres
<b>1st</b> Sunday	0031 0635 1245 1906	3.3 0.7 3.6 0.6
<b>2nd</b> Monday	0110 0714 1325 1946	3.3 0.8 3.6 0.6
<b>3rd</b> Tuesday	0155 0757 1409 2029	3.3 0.8 3.6 0.6
<b>4th</b> Wednesday	0243 0843 1457 2118	3.2 0.8 3.5 0.6
<b>5th</b> Thursday	0337 0934 1549 2214	3.2 0.9 3.4 0.7
<b>6th</b> Friday	0436 1032 1649 2320	3.1 1.0 3.3 0.8
<b>7th</b> Saturday	0542 1139 1800	3.1 1.0 3.3

	Time	Metres
<b>8th</b> Sunday	0035 0651 1257 1916	0.8 3.2 1.0 3.3
<b>9th</b> Monday	0145 0759 1408 2027	0.7 3.3 0.8 3.4
<b>10th</b> Tuesday	0243 0900 1508 2128	0.6 3.4 0.7 3.5
<b>11th</b> Wednesday	0336 0954 1601 2222	0.5 3.6 0.5 3.5
<b>12th</b> Thursday	0425 1044 1650 2313	0.5 3.7 0.4 3.5
<b>13th</b> Friday	0512 1133 1737	0.5 3.8 0.3
<b>14th</b> Saturday	0002 0558 1220 1822	3.5 0.6 3.8 0.3
<b>15th</b> Sunday	0050 0643 1306 1906	3.4 0.6 3.8 0.4

	Time	Metres
<b>16th</b> Monday	0137 0727 1351 1949	3.3 0.7 3.8 0.4
<b>17th</b> Tuesday	0222 0811 1435 2033	3.2 0.8 3.7 0.6
<b>18th</b> Wednesday	0306 0855 1519 2118	3.2 0.9 3.6 0.7
<b>19th</b> Thursday	0351 0943 1606 2208	3.1 1.0 3.4 0.8
<b>20th</b> Friday	0439 1041 1656 2311	3.0 1.1 3.2 1.0
<b>21st</b> Saturday	0533 1155 1753	2.9 1.2 3.1
<b>22nd</b> Sunday	0024 0634 1304 1856	1.1 2.9 1.2 3.0
<b>23rd</b> Monday	0126 0748 1403 2009	1.1 2.9 1.1 3.0

	Time	Metres
<b>24th</b> Tuesday	0219 0853 1455 2109	1.0 3.1 1.0 3.1
<b>25th</b> Wednesday	0305 0941 1539 2157	0.9 3.2 0.8 3.2
<b>26th</b> Thursday	0346 1022 1619 2238	0.8 3.3 0.7 3.3
<b>27th</b> Friday	0425 1059 1656 2314	0.7 3.4 0.6 3.3
<b>28th</b> Saturday	0503 1129 1733 2342	0.6 3.5 0.5 3.3
<b>29th</b> Sunday	0540 1150 1810	0.6 3.5 0.4
<b>30th</b> Monday	0010 0617 1223 1847	3.3 0.6 3.6 0.4
<b>31st</b> Tuesday	0048 0656 1303 1926	3.3 0.5 3.6 0.4

# Belfast Harbour

Tide Tables 2017

## February 2017

	Time	Metres
<b>1st</b> Wednesday	0131 0736 1347 2008	3.3 0.5 3.6 0.4
<b>2nd</b> Thursday	0218 0820 1435 2054	3.3 0.6 3.6 0.5
<b>3rd</b> Friday	0309 0908 1526 2146	3.2 0.6 3.5 0.6
<b>4th</b> Saturday	0405 1004 1625 2249	3.1 0.8 3.3 0.7
<b>5th</b> Sunday	0509 1111 1735	3.1 0.9 3.2
<b>6th</b> Monday	0010 0622 1238 1859	0.8 3.0 0.9 3.1
<b>7th</b> Tuesday	0129 0741 1356 2020	0.8 3.1 0.8 3.1

	Time	Metres
<b>8th</b> Wednesday	0232 0849 1500 2124	0.7 3.3 0.6 3.2
<b>9th</b> Thursday	0328 0945 1555 2217	0.6 3.5 0.5 3.3
<b>10th</b> Friday	0418 1035 1643 2305	0.5 3.6 0.3 3.4
<b>11th</b> Saturday	0503 1120 1727 2349	0.5 3.7 0.3 3.3
<b>12th</b> Sunday	0546 1204 1807	0.5 3.7 0.3
<b>13th</b> Monday	0032 0625 1246 1844	3.3 0.5 3.7 0.3
<b>14th</b> Tuesday	0112 0702 1326 1920	3.2 0.6 3.7 0.4
<b>15th</b> Wednesday	0151 0738 1406 1956	3.2 0.6 3.6 0.5

	Time	Metres
<b>16th</b> Thursday	0230 0815 1447 2034	3.1 0.7 3.5 0.6
<b>17th</b> Friday	0311 0856 1531 2116	3.1 0.8 3.3 0.7
<b>18th</b> Saturday	0356 0942 1618 2204	3.0 0.9 3.2 0.9
<b>19th</b> Sunday	0446 1042 1711 2309	2.9 1.1 3.0 1.1
<b>20th</b> Monday	0542 1218 1811	2.8 1.1 2.9
<b>21st</b> Tuesday	0043 0646 1328 1919	1.1 2.8 1.1 2.8
<b>22nd</b> Wednesday	0147 0803 1425 2035	1.1 2.9 0.9 2.9
<b>23rd</b> Thursday	0239 0910 1513 2131	0.9 3.0 0.7 3.0

	Time	Metres
<b>24th</b> Friday	0324 0955 1555 2213	0.8 3.2 0.6 3.2
<b>25th</b> Saturday	0404 1031 1633 2248	0.6 3.3 0.4 3.2
<b>26th</b> Sunday	0442 1100 1710 2318	0.5 3.4 0.3 3.3
<b>27th</b> Monday	0519 1126 1747 2348	0.4 3.5 0.3 3.3
<b>28th</b> Tuesday	0556 1200 1824	0.4 3.6 0.2

# Belfast Harbour

Tide Tables 2017

## March 2017

<b>1st</b> Wednesday	0025 0633 1242 1903	3.4 0.3 3.6 0.2
<b>2nd</b> Thursday	0109 0714 1328 1945	3.4 0.3 3.6 0.3
<b>3rd</b> Friday	0156 0758 1416 2031	3.3 0.4 3.5 0.4
<b>4th</b> Saturday	0246 0847 1510 2123	3.3 0.5 3.4 0.5
<b>5th</b> Sunday	0342 0942 1610 2226	3.2 0.6 3.2 0.7
<b>6th</b> Monday	0446 1053 1723 2352	3.1 0.8 3.0 0.9
<b>7th</b> Tuesday	0602 1226 1854	3.0 0.8 2.9

	Time	Metres
<b>8th</b> Wednesday	0115 0727 1347 2015	0.9 3.0 0.7 3.0
<b>9th</b> Thursday	0222 0837 1452 2116	0.8 3.2 0.5 3.1
<b>10th</b> Friday	0320 0932 1547 2206	0.6 3.4 0.4 3.2
<b>11th</b> Saturday	0409 1020 1632 2251	0.5 3.5 0.3 3.3
<b>12th</b> Sunday	0451 1103 1711 2332	0.5 3.6 0.3 3.3
<b>13th</b> Monday	0529 1144 1745	0.5 3.6 0.3
<b>14th</b> Tuesday	0010 0603 1223 1817	3.2 0.5 3.6 0.4
<b>15th</b> Wednesday	0046 0635 1259 1849	3.2 0.5 3.5 0.4

Clocks go forward by 1 hour on the 26th March 2017 at 01:00hrs. Changing Local Time (LT) from Greenwich Mean Time (GMT) to British Summer Time (BST). Please add 1 hour to Tide Table times to convert to Local Time (British Summer Time).

	Time	Metres
<b>16th</b> Thursday	0119 0707 1337 1922	3.2 0.5 3.5 0.5
<b>17th</b> Friday	0155 0742 1415 1957	3.2 0.6 3.4 0.6
<b>18th</b> Saturday	0233 0820 1457 2037	3.2 0.6 3.3 0.7
<b>19th</b> Sunday	0316 0903 1543 2121	3.1 0.8 3.1 0.9
<b>20th</b> Monday	0403 0955 1634 2215	3.0 0.9 2.9 1.0
<b>21st</b> Tuesday	0457 1110 1733 2336	2.9 1.1 2.8 1.2
<b>22nd</b> Wednesday	0559 1251 1838	2.8 1.1 2.7
<b>23rd</b> Thursday	0110 0707 1352 1950	1.1 2.8 0.9 2.8

	Time	Metres
<b>24th</b> Friday	0209 0819 1443 2054	1.0 2.9 0.7 3.0
<b>25th</b> Saturday	0257 0914 1527 2139	0.8 3.1 0.5 3.1
<b>26th</b> Sunday	0339 0952 1607 2215	0.6 3.3 0.3 3.3
<b>27th</b> Monday	0417 1026 1644 2249	0.5 3.4 0.2 3.4
<b>28th</b> Tuesday	0454 1100 1720 2325	0.4 3.5 0.1 3.4
<b>29th</b> Wednesday	0531 1139 1758	0.3 3.6 0.1
<b>30th</b> Thursday	0006 0610 1224 1839	3.5 0.2 3.6 0.2
<b>31st</b> Friday	0051 0653 1312 1923	3.5 0.2 3.6 0.2

# Belfast Harbour

Tide Tables 2017

## April 2017

	Time	Metres
<b>1st</b> Saturday	0139 0739 1405 2012	3.5 0.2 3.5 0.4
<b>2nd</b> Sunday	0231 0830 1502 2106	3.4 0.4 3.3 0.6
<b>3rd</b> Monday	0327 0929 1606 2212	3.3 0.5 3.2 0.8
<b>4th</b> Tuesday	0430 1043 1721 2337	3.2 0.7 3.0 1.0
<b>5th</b> Wednesday	0545 1214 1848	3.1 0.7 2.9
<b>6th</b> Thursday	0058 0709 1333 2001	1.0 3.1 0.6 3.0
<b>7th</b> Friday	0208 0817 1439 2059	0.9 3.2 0.5 3.1

	Time	Metres
<b>8th</b> Saturday	0307 0912 1532 2147	0.7 3.4 0.4 3.2
<b>9th</b> Sunday	0355 0959 1614 2230	0.6 3.5 0.3 3.2
<b>10th</b> Monday	0435 1042 1648 2310	0.5 3.5 0.4 3.2
<b>11th</b> Tuesday	0509 1121 1718 2345	0.5 3.5 0.4 3.2
<b>12th</b> Wednesday	0540 1157 1749	0.5 3.4 0.5
<b>13th</b> Thursday	0017 0610 1231 1819	3.2 0.5 3.4 0.5
<b>14th</b> Friday	0048 0641 1306 1852	3.3 0.5 3.4 0.6
<b>15th</b> Saturday	0122 0715 1344 1927	3.3 0.6 3.3 0.6

Please add 1 hour to Tide Table times to convert to Local Time (British Summer Time).

	Time	Metres
<b>16th</b> Sunday	0159 0751 1425 2005	3.3 0.6 3.2 0.7
<b>17th</b> Monday	0238 0833 1510 2049	3.2 0.7 3.1 0.8
<b>18th</b> Tuesday	0320 0921 1600 2140	3.1 0.8 3.0 1.0
<b>19th</b> Wednesday	0410 1022 1658 2243	3.0 1.0 2.8 1.2
<b>20th</b> Thursday	0512 1200 1801	2.9 1.0 2.8
<b>21st</b> Friday	0014 0618 1315 1907	1.2 2.8 0.9 2.8
<b>22nd</b> Saturday	0130 0726 1409 2009	1.1 2.9 0.7 3.0
<b>23rd</b> Sunday	0223 0825 1455 2059	0.9 3.1 0.4 3.2

	Time	Metres
<b>24th</b> Monday	0308 0913 1536 2142	0.7 3.3 0.3 3.3
<b>25th</b> Tuesday	0348 0955 1614 2222	0.5 3.5 0.2 3.5
<b>26th</b> Wednesday	0427 1037 1652 2303	0.3 3.6 0.1 3.5
<b>27th</b> Thursday	0507 1121 1733 2348	0.2 3.6 0.1 3.6
<b>28th</b> Friday	0550 1210 1817	0.2 3.6 0.2
<b>29th</b> Saturday	0036 0635 1303 1905	3.6 0.2 3.6 0.3
<b>30th</b> Sunday	0127 0725 1359 1957	3.6 0.2 3.5 0.5

# Belfast Harbour

Tide Tables 2017

## May 2017

	Time	Metres
<b>1st</b> Monday	0221 0819 1458 2054	3.5 0.3 3.3 0.7
<b>2nd</b> Tuesday	0316 0920 1602 2201	3.4 0.5 3.2 0.9
<b>3rd</b> Wednesday	0416 1033 1713 2317	3.3 0.6 3.0 1.0
<b>4th</b> Thursday	0525 1154 1830	3.2 0.6 2.9
<b>5th</b> Friday	0031 0642 1309 1938	1.0 3.2 0.6 3.0
<b>6th</b> Saturday	0141 0750 1414 2034	0.9 3.2 0.6 3.1
<b>7th</b> Sunday	0242 0846 1506 2122	0.8 3.3 0.5 3.1

	Time	Metres
<b>8th</b> Monday	0332 0934 1546 2205	0.7 3.4 0.5 3.2
<b>9th</b> Tuesday	0412 1017 1618 2244	0.7 3.4 0.5 3.2
<b>10th</b> Wednesday	0446 1056 1649 2319	0.6 3.4 0.6 3.3
<b>11th</b> Thursday	0517 1131 1721 2350	0.6 3.4 0.6 3.3
<b>12th</b> Friday	0549 1203 1754	0.6 3.3 0.6
<b>13th</b> Saturday	0020 0620 1238 1826	3.3 0.6 3.3 0.7
<b>14th</b> Sunday	0053 0653 1315 1902	3.4 0.6 3.3 0.7
<b>15th</b> Monday	0129 0729 1355 1941	3.4 0.6 3.2 0.8

Please add 1 hour to Tide Table times to convert to Local Time (British Summer Time).

	Time	Metres
<b>16th</b> Tuesday	0205 0809 1438 2024	3.3 0.7 3.1 0.8
<b>17th</b> Wednesday	0244 0855 1527 2113	3.3 0.7 3.0 0.9
<b>18th</b> Thursday	0329 0950 1623 2209	3.2 0.8 2.9 1.1
<b>19th</b> Friday	0424 1057 1725 2315	3.0 0.9 2.9 1.1
<b>20th</b> Saturday	0530 1219 1828	3.0 0.8 2.9
<b>21st</b> Sunday	0029 0638 1325 1928	1.1 3.0 0.7 3.0
<b>22nd</b> Monday	0137 0743 1417 2022	0.9 3.2 0.5 3.2
<b>23rd</b> Tuesday	0231 0839 1502 2110	0.7 3.3 0.3 3.4

	Time	Metres
<b>24th</b> Wednesday	0318 0929 1545 2157	0.6 3.5 0.2 3.5
<b>25th</b> Thursday	0403 1017 1628 2243	0.4 3.6 0.2 3.6
<b>26th</b> Friday	0448 1106 1713 2332	0.3 3.6 0.2 3.7
<b>27th</b> Saturday	0534 1158 1800	0.2 3.6 0.3
<b>28th</b> Sunday	0023 0622 1253 1850	3.7 0.2 3.5 0.4
<b>29th</b> Monday	0115 0713 1349 1944	3.7 0.2 3.4 0.6
<b>30th</b> Tuesday	0208 0808 1448 2042	3.7 0.3 3.3 0.7
<b>31st</b> Wednesday	0302 0907 1547 2144	3.6 0.4 3.2 0.8



# Belfast Harbour

Tide Tables 2017

## June 2017

	Time	Metres
<b>1st</b> Thursday	0357 1014 1651 2250	3.5 0.5 3.0 0.9
<b>2nd</b> Friday	0456 1124 1800 2356	3.3 0.6 3.0 1.0
<b>3rd</b> Saturday	0605 1232 1906	3.2 0.7 3.0
<b>4th</b> Sunday	0101 0714 1334 2003	1.0 3.2 0.7 3.0
<b>5th</b> Monday	0203 0814 1427 2053	0.9 3.2 0.7 3.1
<b>6th</b> Tuesday	0258 0905 1511 2137	0.9 3.3 0.7 3.2
<b>7th</b> Wednesday	0343 0950 1547 2217	0.8 3.3 0.7 3.3

	Time	Metres
<b>8th</b> Thursday	0421 1030 1622 2253	0.7 3.3 0.7 3.3
<b>9th</b> Friday	0455 1106 1656 2326	0.7 3.3 0.7 3.4
<b>10th</b> Saturday	0528 1140 1731 2357	0.7 3.3 0.7 3.4
<b>11th</b> Sunday	0602 1213 1806	0.6 3.2 0.7
<b>12th</b> Monday	0028 0636 1248 1842	3.4 0.6 3.2 0.7
<b>13th</b> Tuesday	0101 0712 1325 1921	3.4 0.6 3.2 0.8
<b>14th</b> Wednesday	0136 0750 1407 2003	3.4 0.6 3.2 0.8
<b>15th</b> Thursday	0215 0833 1454 2049	3.4 0.6 3.1 0.9

Please add 1 hour to Tide Table times to convert to Local Time (British Summer Time).

	Time	Metres
<b>16th</b> Friday	0259 0921 1547 2140	3.3 0.7 3.0 0.9
<b>17th</b> Saturday	0349 1017 1645 2236	3.2 0.7 3.0 1.0
<b>18th</b> Sunday	0447 1122 1747 2339	3.2 0.7 3.0 1.0
<b>19th</b> Monday	0554 1234 1849	3.1 0.7 3.1
<b>20th</b> Tuesday	0048 0704 1339 1948	0.9 3.2 0.6 3.2
<b>21st</b> Wednesday	0156 0809 1434 2043	0.8 3.3 0.4 3.4
<b>22nd</b> Thursday	0254 0908 1523 2135	0.6 3.5 0.4 3.5
<b>23rd</b> Friday	0346 1001 1611 2226	0.5 3.5 0.3 3.6

	Time	Metres
<b>24th</b> Saturday	0435 1054 1659 2317	0.3 3.6 0.3 3.7
<b>25th</b> Sunday	0524 1146 1748	0.2 3.6 0.4
<b>26th</b> Monday	0008 0612 1240 1838	3.8 0.2 3.5 0.5
<b>27th</b> Tuesday	0100 0702 1334 1930	3.8 0.2 3.4 0.6
<b>28th</b> Wednesday	0151 0754 1429 2024	3.8 0.3 3.3 0.7
<b>29th</b> Thursday	0241 0847 1523 2119	3.7 0.4 3.2 0.8
<b>30th</b> Friday	0331 0944 1617 2217	3.6 0.5 3.1 0.9

# Belfast Harbour

Tide Tables 2017

## July 2017

	Time	Metres
<b>1st</b> Saturday	0422 1046 1715 2318	3.4 0.6 3.0 1.0
<b>2nd</b> Sunday	0517 1150 1817	3.3 0.8 2.9
<b>3rd</b> Monday	0020 0621 1251 1921	1.0 3.1 0.8 2.9
<b>4th</b> Tuesday	0122 0731 1347 2017	1.0 3.1 0.8 3.0
<b>5th</b> Wednesday	0220 0832 1436 2106	1.0 3.1 0.8 3.1
<b>6th</b> Thursday	0311 0922 1518 2149	0.9 3.2 0.8 3.2
<b>7th</b> Friday	0355 1006 1556 2228	0.8 3.2 0.8 3.3

	Time	Metres
<b>8th</b> Saturday	0432 1044 1633 2304	0.7 3.2 0.7 3.4
<b>9th</b> Sunday	0507 1120 1709 2337	0.7 3.2 0.7 3.4
<b>10th</b> Monday	0542 1153 1746	0.6 3.2 0.7
<b>11th</b> Tuesday	0004 0617 1222 1822	3.4 0.6 3.2 0.7
<b>12th</b> Wednesday	0032 0653 1256 1901	3.4 0.6 3.2 0.7
<b>13th</b> Thursday	0108 0730 1336 1941	3.5 0.5 3.2 0.7
<b>14th</b> Friday	0148 0809 1422 2024	3.5 0.5 3.2 0.7
<b>15th</b> Saturday	0233 0853 1512 2111	3.4 0.5 3.1 0.8

Please add 1 hour to Tide Table times to convert to Local Time (British Summer Time).

	Time	Metres
<b>16th</b> Sunday	0321 0943 1607 2203	3.4 0.6 3.1 0.8
<b>17th</b> Monday	0416 1041 1708 2302	3.3 0.7 3.1 0.9
<b>18th</b> Tuesday	0519 1151 1813	3.2 0.7 3.1
<b>19th</b> Wednesday	0012 0632 1309 1918	0.9 3.2 0.7 3.2
<b>20th</b> Thursday	0131 0747 1414 2021	0.8 3.2 0.6 3.3
<b>21st</b> Friday	0239 0854 1509 2119	0.7 3.3 0.5 3.5
<b>22nd</b> Saturday	0336 0952 1600 2213	0.5 3.4 0.5 3.6
<b>23rd</b> Sunday	0428 1045 1649 2304	0.3 3.5 0.4 3.7

	Time	Metres
<b>24th</b> Monday	0516 1135 1737 2353	0.3 3.5 0.5 3.8
<b>25th</b> Tuesday	0603 1225 1824	0.2 3.4 0.5
<b>26th</b> Wednesday	0041 0648 1314 1910	3.8 0.2 3.3 0.6
<b>27th</b> Thursday	0129 0732 1403 1957	3.8 0.3 3.3 0.7
<b>28th</b> Friday	0215 0816 1450 2044	3.7 0.4 3.2 0.7
<b>29th</b> Saturday	0300 0902 1536 2133	3.6 0.5 3.1 0.9
<b>30th</b> Sunday	0346 0952 1624 2229	3.4 0.7 3.0 1.0
<b>31st</b> Monday	0435 1053 1714 2336	3.3 0.9 2.9 1.1

# Belfast Harbour

Tide Tables 2017

## August 2017

<b>1st</b> Tuesday	0529 1204 1811	3.1 1.0 2.9
<b>2nd</b> Wednesday	0042 0631 1307 1920	1.1 3.0 1.0 2.9
<b>3rd</b> Thursday	0144 0746 1402 2030	1.1 2.9 1.0 3.0
<b>4th</b> Friday	0240 0854 1450 2121	0.9 3.0 0.9 3.2
<b>5th</b> Saturday	0328 0943 1531 2204	0.8 3.1 0.8 3.3
<b>6th</b> Sunday	0408 1024 1610 2242	0.7 3.2 0.7 3.4
<b>7th</b> Monday	0444 1101 1647 2314	0.6 3.2 0.7 3.4

	Time	Metres
<b>8th</b> Tuesday	0519 1132 1724 2336	0.5 3.2 0.7 3.4
<b>9th</b> Wednesday	0554 1156 1800	0.5 3.2 0.6
<b>10th</b> Thursday	0002 0629 1228 1837	3.5 0.4 3.3 0.6
<b>11th</b> Friday	0040 0705 1308 1915	3.5 0.4 3.3 0.6
<b>12th</b> Saturday	0122 0743 1353 1956	3.5 0.4 3.3 0.6
<b>13th</b> Sunday	0207 0825 1442 2042	3.5 0.4 3.3 0.6
<b>14th</b> Monday	0256 0913 1536 2133	3.5 0.5 3.2 0.7
<b>15th</b> Tuesday	0350 1009 1636 2233	3.3 0.7 3.1 0.9

Please add 1 hour to Tide Table times to convert to Local Time (British Summer Time).

	Time	Metres
<b>16th</b> Wednesday	0455 1119 1744 2348	3.2 0.8 3.1 0.9
<b>17th</b> Thursday	0612 1249 1856	3.1 0.9 3.1
<b>18th</b> Friday	0119 0736 1402 2007	0.9 3.1 0.8 3.3
<b>19th</b> Saturday	0231 0850 1500 2110	0.7 3.2 0.7 3.5
<b>20th</b> Sunday	0329 0948 1552 2203	0.5 3.3 0.6 3.6
<b>21st</b> Monday	0420 1037 1639 2251	0.3 3.4 0.5 3.7
<b>22nd</b> Tuesday	0506 1123 1723 2337	0.3 3.4 0.5 3.8
<b>23rd</b> Wednesday	0548 1208 1805	0.3 3.4 0.6

	Time	Metres
<b>24th</b> Thursday	0021 0626 1251 1845	3.8 0.3 3.3 0.6
<b>25th</b> Friday	0104 0703 1333 1923	3.7 0.4 3.3 0.7
<b>26th</b> Saturday	0146 0739 1414 2002	3.6 0.5 3.2 0.7
<b>27th</b> Sunday	0228 0817 1456 2043	3.5 0.6 3.2 0.8
<b>28th</b> Monday	0312 0858 1540 2129	3.4 0.8 3.1 1.0
<b>29th</b> Tuesday	0358 0945 1628 2229	3.2 1.0 3.0 1.1
<b>30th</b> Wednesday	0449 1046 1722	3.0 1.1 3.0
<b>31st</b> Thursday	0000 0547 1222 1822	1.2 2.9 1.2 2.9

# Belfast Harbour

Tide Tables 2017

## September 2017

	Time	Metres
<b>1st</b> Friday	0109 0655 1328 1934	1.1 2.8 1.2 3.0
<b>2nd</b> Saturday	0208 0819 1421 2048	1.0 2.9 1.1 3.1
<b>3rd</b> Sunday	0258 0918 1506 2135	0.8 3.0 0.9 3.3
<b>4th</b> Monday	0340 1000 1546 2213	0.7 3.2 0.8 3.4
<b>5th</b> Tuesday	0418 1035 1623 2243	0.5 3.3 0.7 3.4
<b>6th</b> Wednesday	0453 1105 1659 2304	0.4 3.3 0.6 3.5
<b>7th</b> Thursday	0528 1129 1735 2335	0.4 3.4 0.6 3.6

	Time	Metres
<b>8th</b> Friday	0603 1202 1811	0.4 3.4 0.5
<b>9th</b> Saturday	0013 0638 1242 1849	3.6 0.3 3.4 0.5
<b>10th</b> Sunday	0058 0717 1327 1931	3.6 0.4 3.4 0.5
<b>11th</b> Monday	0144 0759 1416 2018	3.6 0.5 3.4 0.6
<b>12th</b> Tuesday	0235 0848 1511 2110	3.5 0.6 3.3 0.7
<b>13th</b> Wednesday	0333 0945 1613 2213	3.3 0.8 3.2 0.9
<b>14th</b> Thursday	0441 1100 1723 2337	3.1 1.0 3.2 1.0
<b>15th</b> Friday	0604 1237 1842	3.0 1.1 3.2

Please add 1 hour to Tide Table times to convert to Local Time (British Summer Time).

	Time	Metres
<b>16th</b> Saturday	0111 0736 1351 1958	0.9 3.0 1.0 3.3
<b>17th</b> Sunday	0222 0845 1451 2100	0.7 3.2 0.8 3.5
<b>18th</b> Monday	0320 0939 1542 2150	0.5 3.3 0.7 3.6
<b>19th</b> Tuesday	0409 1025 1627 2236	0.4 3.4 0.6 3.7
<b>20th</b> Wednesday	0450 1108 1707 2318	0.3 3.4 0.6 3.7
<b>21st</b> Thursday	0526 1147 1743 2359	0.4 3.4 0.6 3.7
<b>22nd</b> Friday	0559 1225 1817	0.5 3.3 0.7
<b>23rd</b> Saturday	0038 0630 1301 1850	3.6 0.5 3.3 0.7

	Time	Metres
<b>24th</b> Sunday	0117 0703 1338 1926	3.6 0.6 3.3 0.8
<b>25th</b> Monday	0156 0739 1417 2004	3.5 0.7 3.3 0.8
<b>26th</b> Tuesday	0238 0817 1500 2047	3.4 0.8 3.3 0.9
<b>27th</b> Wednesday	0323 0901 1548 2138	3.2 1.0 3.2 1.1
<b>28th</b> Thursday	0414 0952 1640 2252	3.1 1.2 3.1 1.2
<b>29th</b> Friday	0511 1106 1739	2.9 1.3 3.0
<b>30th</b> Saturday	0030 0615 1248 1844	1.2 2.8 1.3 3.0

# Belfast Harbour

Tide Tables 2017

## October 2017

<b>1st</b> Sunday	0133 0730 1349 1956	1.1 2.9 1.2 3.1
<b>2nd</b> Monday	0226 0840 1437 2054	0.9 3.0 1.0 3.2
<b>3rd</b> Tuesday	0310 0926 1519 2135	0.7 3.2 0.9 3.4
<b>4th</b> Wednesday	0348 1002 1556 2207	0.5 3.4 0.7 3.5
<b>5th</b> Thursday	0424 1034 1632 2237	0.4 3.5 0.6 3.6
<b>6th</b> Friday	0459 1104 1707 2311	0.3 3.5 0.5 3.7
<b>7th</b> Saturday	0534 1139 1745 2352	0.3 3.6 0.5 3.7

	Time	Metres
<b>8th</b> Sunday	0612 1220 1826	0.4 3.6 0.5
<b>9th</b> Monday	0038 0653 1307 1910	3.7 0.4 3.6 0.5
<b>10th</b> Tuesday	0128 0739 1358 1959	3.6 0.6 3.6 0.6
<b>11th</b> Wednesday	0224 0830 1454 2055	3.5 0.7 3.5 0.7
<b>12th</b> Thursday	0327 0931 1557 2202	3.3 1.0 3.4 0.9
<b>13th</b> Friday	0439 1050 1709 2330	3.1 1.1 3.3 0.9
<b>14th</b> Saturday	0605 1222 1829	3.0 1.2 3.3
<b>15th</b> Sunday	0058 0727 1337 1943	0.9 3.1 1.1 3.4

Clocks go back by 1 hour on the 29th October 2017 at 02:00hrs. Changing Local Time (LT) from British Summer Time (BST) to Greenwich Mean Time (GMT).

	Time	Metres
<b>16th</b> Monday	0210 0831 1438 2042	0.7 3.2 0.9 3.5
<b>17th</b> Tuesday	0306 0922 1529 2132	0.6 3.3 0.8 3.6
<b>18th</b> Wednesday	0352 1007 1611 2217	0.5 3.4 0.7 3.7
<b>19th</b> Thursday	0428 1048 1648 2258	0.5 3.4 0.7 3.7
<b>20th</b> Friday	0459 1125 1720 2336	0.6 3.4 0.7 3.6
<b>21st</b> Saturday	0530 1159 1752	0.6 3.4 0.8
<b>22nd</b> Sunday	0012 0601 1232 1824	3.6 0.7 3.4 0.8
<b>23rd</b> Monday	0048 0633 1305 1858	3.5 0.8 3.5 0.8

	Time	Metres
<b>24th</b> Tuesday	0126 0708 1343 1935	3.4 0.8 3.5 0.8
<b>25th</b> Wednesday	0207 0745 1424 2016	3.4 0.9 3.4 0.9
<b>26th</b> Thursday	0252 0828 1508 2104	3.3 1.0 3.3 1.0
<b>27th</b> Friday	0341 0918 1558 2203	3.1 1.2 3.2 1.2
<b>28th</b> Saturday	0438 1019 1656 2330	3.0 1.3 3.1 1.2
<b>29th</b> Sunday	0540 1142 1800	2.9 1.4 3.0
<b>30th</b> Monday	0051 0647 1306 1906	1.1 2.9 1.3 3.1
<b>31st</b> Tuesday	0148 0752 1401 2006	0.9 3.1 1.1 3.2

# Belfast Harbour

Tide Tables 2017

## November 2017

<b>1st</b> Wednesday	0235 0845 1446 2055	0.7 3.3 0.9 3.4
<b>2nd</b> Thursday	0315 0926 1526 2135	0.6 3.4 0.8 3.6
<b>3rd</b> Friday	0352 1004 1604 2213	0.4 3.6 0.6 3.7
<b>4th</b> Saturday	0429 1041 1643 2254	0.4 3.7 0.5 3.8
<b>5th</b> Sunday	0508 1121 1724 2338	0.4 3.7 0.4 3.8
<b>6th</b> Monday	0550 1206 1808	0.4 3.8 0.4
<b>7th</b> Tuesday	0028 0635 1255 1855	3.7 0.5 3.7 0.5

	Time	Metres
<b>8th</b> Wednesday	0123 0724 1348 1948	3.6 0.7 3.7 0.5
<b>9th</b> Thursday	0223 0819 1445 2046	3.5 0.8 3.6 0.7
<b>10th</b> Friday	0327 0921 1546 2153	3.3 1.0 3.5 0.8
<b>11th</b> Saturday	0436 1036 1653 2313	3.2 1.2 3.4 0.8
<b>12th</b> Sunday	0553 1156 1808	3.1 1.2 3.4
<b>13th</b> Monday	0034 0706 1310 1918	0.8 3.1 1.2 3.4
<b>14th</b> Tuesday	0144 0808 1414 2018	0.8 3.2 1.0 3.5
<b>15th</b> Wednesday	0241 0859 1507 2109	0.7 3.3 0.9 3.6

	Time	Metres
<b>16th</b> Thursday	0326 0944 1551 2155	0.7 3.4 0.8 3.6
<b>17th</b> Friday	0401 1025 1627 2237	0.7 3.4 0.8 3.6
<b>18th</b> Saturday	0432 1103 1700 2315	0.7 3.5 0.8 3.5
<b>19th</b> Sunday	0505 1136 1732 2349	0.8 3.5 0.8 3.5
<b>20th</b> Monday	0537 1207 1805	0.8 3.5 0.8
<b>21st</b> Tuesday	0022 0609 1239 1838	3.4 0.9 3.6 0.8
<b>22nd</b> Wednesday	0059 0644 1315 1914	3.4 0.9 3.6 0.8
<b>23rd</b> Thursday	0139 0722 1353 1953	3.4 0.9 3.5 0.9

	Time	Metres
<b>24th</b> Friday	0222 0804 1432 2038	3.3 1.0 3.5 0.9
<b>25th</b> Saturday	0309 0851 1515 2129	3.2 1.1 3.3 1.0
<b>26th</b> Sunday	0402 0945 1606 2230	3.1 1.2 3.2 1.1
<b>27th</b> Monday	0502 1048 1709 2344	3.0 1.3 3.1 1.1
<b>28th</b> Tuesday	0606 1159 1816	3.0 1.3 3.1
<b>29th</b> Wednesday	0056 0707 1310 1920	1.0 3.1 1.2 3.2
<b>30th</b> Thursday	0153 0803 1407 2017	0.8 3.3 1.0 3.4

# Belfast Harbour

Tide Tables 2017

## December 2017

<b>1st</b> Friday	0240 0852 1455 2107	0.6 3.4 0.8 3.5
<b>2nd</b> Saturday	0323 0937 1539 2153	0.5 3.6 0.6 3.7
<b>3rd</b> Sunday	0405 1021 1623 2241	0.4 3.7 0.5 3.7
<b>4th</b> Monday	0448 1107 1708 2330	0.4 3.8 0.4 3.7
<b>5th</b> Tuesday	0533 1155 1755	0.5 3.8 0.4
<b>6th</b> Wednesday	0023 0621 1247 1845	3.7 0.6 3.9 0.4
<b>7th</b> Thursday	0119 0713 1340 1938	3.6 0.7 3.8 0.4

	Time	Metres
<b>8th</b> Friday	0217 0808 1434 2035	3.5 0.8 3.8 0.5
<b>9th</b> Saturday	0317 0907 1530 2138	3.3 1.0 3.7 0.6
<b>10th</b> Sunday	0420 1013 1630 2247	3.2 1.1 3.5 0.7
<b>11th</b> Monday	0527 1122 1735 2358	3.1 1.1 3.4 0.8
<b>12th</b> Tuesday	0635 1231 1845	3.1 1.1 3.4
<b>13th</b> Wednesday	0105 0737 1337 1948	0.8 3.1 1.1 3.4
<b>14th</b> Thursday	0204 0831 1435 2043	0.8 3.2 1.0 3.4
<b>15th</b> Friday	0253 0919 1525 2132	0.8 3.3 0.9 3.4

	Time	Metres
<b>16th</b> Saturday	0332 1003 1605 2216	0.8 3.4 0.9 3.4
<b>17th</b> Sunday	0408 1042 1641 2255	0.8 3.5 0.8 3.4
<b>18th</b> Monday	0442 1117 1715 2331	0.8 3.5 0.8 3.4
<b>19th</b> Tuesday	0517 1150 1748	0.8 3.6 0.8
<b>20th</b> Wednesday	0004 0551 1221 1822	3.4 0.9 3.6 0.8
<b>21st</b> Thursday	0039 0626 1253 1858	3.3 0.9 3.6 0.8
<b>22nd</b> Friday	0114 0704 1326 1935	3.3 0.9 3.6 0.8
<b>23rd</b> Saturday	0152 0744 1401 2015	3.3 0.9 3.5 0.8

	Time	Metres
<b>24th</b> Sunday	0234 0827 1441 2100	3.2 0.9 3.4 0.8
<b>25th</b> Monday	0322 0915 1526 2151	3.1 1.0 3.3 0.9
<b>26th</b> Tuesday	0416 1008 1620 2249	3.1 1.1 3.3 0.9
<b>27th</b> Wednesday	0517 1108 1723 2357	3.0 1.2 3.2 0.9
<b>28th</b> Thursday	0621 1215 1834	3.1 1.1 3.2
<b>29th</b> Friday	0107 0723 1327 1941	0.8 3.2 1.0 3.3
<b>30th</b> Saturday	0208 0820 1428 2042	0.7 3.3 0.9 3.4
<b>31st</b> Sunday	0300 0914 1522 2137	0.6 3.5 0.7 3.5

# Contact Numbers

---

## Belfast Harbour

### Harbour Office

Tel: 028 9055 4422

### Port Operations

Tel: 028 9055 3014

### Port Control

VHF Channel 12 

### Harbour Police

Tel: 028 9055 3000

## River Lagan (DSD)

### River Manager

Tel: 028 9027 7642

### Weir Control / River Warden

Tel: 028 9031 5304

### Weir Control

VHF Channel 71   
Callsign "Lagan Weir"



# Belfast Harbour

Harbour Office

Corporation Square

Belfast BT1 3AL

+44 28 9055 4422

[belfast-harbour.co.uk](http://belfast-harbour.co.uk)

