



 **Belfast
Harbour**

Tide Tables 2023

20

23

Safety First on Belfast Lough

Welcome to



Recreational Craft Must Contact "Belfast VTS"
on **VHF Channel 12** for traffic clearance to enter/exit.

All users of the Lough are expected to operate in a safe & responsible manner.

Users are required to always comply with international collision regulations.

Users are reminded to check the sailing & arrival times of ferries in the area.

Users are advised of the possibility of unexpected wavewash generated by shipping using Belfast Harbour.



WARNING
Beware of unexpected waves and spray
after searching or recovering craft



WARNING
Beware of unexpected waves
and spray



Welcome to Belfast Harbour

I am pleased to present the 2023 Tide Tables for Belfast Harbour.

I trust you will find the information contained within to be beneficial for your safe enjoyment of Belfast Harbour.

May I take this opportunity to draw your attention to the Notice to Mariners No.1 of 2023. This notice is a summary of all notices in force at the start of 2023 and can be found on our website www.belfast-harbour.co.uk.

I encourage you to visit the website regularly to acquaint yourself with the most up-to-date navigational safety information.

I wish you a safe and enjoyable visit to Belfast Harbour.

A handwritten signature in black ink, appearing to read 'K G Allen'.

Captain K G Allen
Belfast Harbour Master



Safety First

Lifejackets

Lifejackets save lives

Why wear a lifejacket?

If you're going afloat for pleasure, working around water or fishing, wear your lifejacket or buoyancy aid. It's useless otherwise.

Accidents can happen at any time in any weather. Good training and common sense help, but lives could be saved every year if people wore correctly-fitted, well-maintained lifejackets or buoyancy aids.

The water around the UK is cold all year round. It's surprisingly difficult to get back on board your boat once you're in the water, and the cold water will affect how your body works.

Wearing a lifejacket with crotch straps and spray hood could **double** your chances of survival, and increase your likelihood of being found.

See how crotch straps make a difference on MCA's YouTube channel.

What happens when you fall into cold water

Your blood pressure increases and you begin gasping for air.

If you're not wearing a lifejacket that lifts your airways out of the water, you can breathe in enough water to drown.

What to do if you fall into cold water

- Don't attempt to swim unless you're really close to your boat
- Relax as much as you can
- Find something to hold onto if you can, while your body adapts and you regain control of your breathing

After this, you should be able to call for help or get back on board quickly. Your rescuers should find it easier to help you if you're wearing a lifejacket.

The activities that need lifejackets the most

Statistics tell us that **commercial fishing, angling and sailing** are the activities where most lives might be saved by buoyancy-wear. Every year a panel of experts meets to analyse the year's fatal maritime incidents.

The panel makes a judgment about whether it is probable, possible or unlikely that the person involved could have been saved had they been wearing a lifejacket or buoyancy aid.

Between 2007 and 2010 the panel agreed that 86 lives might have been saved if those involved had been wearing a lifejacket or buoyancy aid.

Make sure that you wear a lifejacket or buoyancy aid as recommended by your sport's national governing body. Have a great trip, but enjoy it safely.

Advice for fishermen

MCA recommends that commercial fishermen wear a lifejacket or buoyancy aid at all times whilst on deck.



Belfast VTS can be contacted via



Channel 12VHF



Information for Leisure Craft visiting Belfast Harbour

Following a significant extension, Belfast Harbour Marina boasts 775m of pontoons consisting of 85 berths, each with water and pay-as-you-go electricity connections.

The Marina can handle recreational vessels up to 15m LOA and maximum draught of 4.0m. Vessels greater than 4m draught or 15m length overall wishing to visit Belfast should contact the Harbour Master's Office prior to arrival. For more information on visiting the Marina, including tariffs, please visit the website - www.belfast-harbour.co.uk/port/marina

The following information has been provided for the benefit of recreational users, however current Notice to Mariners and guides should always be consulted on Belfast Harbour's website www.belfast-harbour.co.uk/port/navigation-pilotage/notice-to-mariners

In addition to the code of conduct (p8-11 overleaf), users of leisure craft should refer to and abide by 'Operating Rules within Belfast Harbour' which are available at www.belfast-harbour.co.uk/port/marina/operating-rules

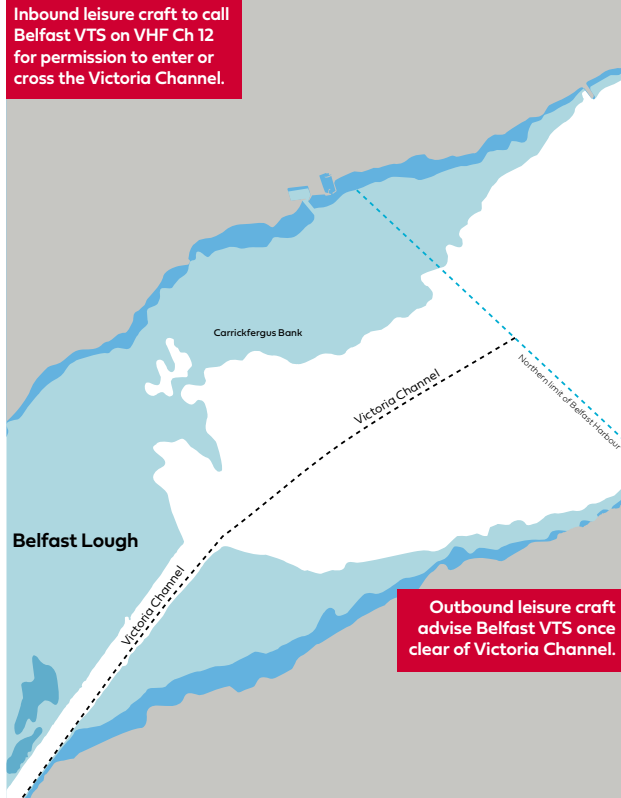
Belfast Harbour

Code of Conduct

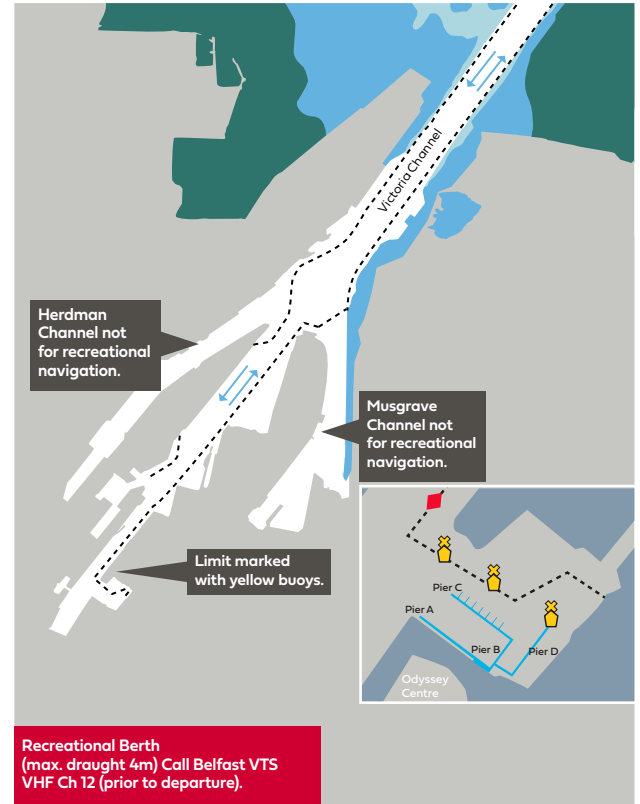
- 1 **Conduct of Transits to and from Berths.**
 - 1.1 Vessels transiting to and from berths must do so under power, yachts should have their sails down.
 - 1.2 No vessels are permitted to be underway inside Harbour Limits during hours of darkness, unless vessels are fitted with the appropriate navigation lights as prescribed by the Collision Regulations.
 - 1.3 Recreational craft not fitted with operational radar are not normally permitted to make transits of the Inner Harbour or Victoria Channel when visibility is less than 0.5 nautical miles.
 - 1.4 Leisure craft are not permitted in Herdman Channel, or Musgrave Channel unless navigating to the Connswater.
 - 1.5 Except where these Guidelines otherwise require; The International Regulations for Prevention of Collision at Sea (Collision Regulations) apply throughout Belfast Harbour Limits. In particular, attention is drawn to Rule 9, narrow channels – vessels should keep as near to the outer limit of the channel which lies on her starboard side as is safe and practicable.
- 1.6 The Master of a leisure craft shall ensure it is manoeuvred in a manner so as not to cause injury, nuisance, excessive wash, damage to property, loss of life, and must keep well clear of vessels fishing, dredging or otherwise working whilst underway.
- 1.7 All vessels must be equipped and manned to undertake all transits safely.
- 1.8 All vessels should carry Admiralty Chart 1752 or equivalent.
- 1.9 All vessels must carry sufficient number and type of lifejackets for those on board.
- 1.10 No sightseeing or stopping is permitted during transit.
- 1.11 Leisure craft must proceed at a safe and appropriate speed, and not exceed a maximum speed of 6 knots to South-West of the Twin Beacons unless granted prior consent by the Harbour Master.
- 1.12 Craft must maintain minimum safe speed when navigating near small craft moorings.
- 1.13 The Master of any vessel must comply with any temporary speed restrictions imposed by Belfast VTS.
- 2 **Compliance with Directions**

The Master of any vessel shall comply with any direction given to him by the Harbour Master or an officer designated by the Harbour Master to do so on his behalf.
- 3 **Priority of Vessels within Belfast Harbour Limits**
 - 3.1 Leisure craft shall not impede the passage of any vessel greater than 20m in length navigating within the inner Harbour or Victoria Channel.
 - 3.2 Leisure craft, which are not confined to the fairway, shall not make use of the fairway so as to obstruct other vessels which can navigate only within the fairway, and when navigating across the Channel or through the inner Harbour shall do so by the shortest route that will avoid such obstruction.
 - 3.3 Any vessel upon encountering a vessel exhibiting the signals prescribed by the Collision Regulations for vessels constrained by their draught, shall afford such vessels a minimum distance of 5 cables ahead and 2 cables astern.
- 4 **Carriage of VHF / Mobile Telephone & Communication with Belfast VTS**
 - 4.1 Belfast Harbour strongly recommend all vessels navigating within Harbour Limits to carry VHF radio. Where carried, VHF radio watch is to be maintained on Ch 12 when within port limits.
 - 4.2 Where no VHF is carried, a mobile telephone should be used in cases of emergency to contact Belfast VTS.
 - 4.3 "Belfast VTS", maintains a listening watch at all times on VHF channel 12.
 - 4.4 Inward vessels must report to Belfast VTS when:
 - Entering the Main Channel, stating location
 - Arriving at their berth
 - 4.5 Departing vessels must report to Belfast VTS when:
 - Prior to departing their berth
 - Upon exiting the main channel, stating location
 - 4.6 Vessels wishing to cross the Victoria Channel to the South-West of No.2 buoy must contact Belfast VTS.
 - 4.7 Any emergencies should be communicated firstly to Belfast Coastguard on VHF Ch 16, and Belfast VTS on VHF Ch 12.
 - 4.8 Vessels should avoid excessive use of VHF Ch 12 wherever possible.

- 5 Age of Master**
No person under the age of 16 years shall steer or navigate within the Harbour any power driven vessel unless in possession of an appropriate RYA qualification or accompanied by a person of 18 years or older.
- 6 Navigation under the influence of Alcohol or Drugs Prohibited**
The Master of any vessel shall not move the vessel within Harbour Limits if his ability to do so is impaired by drink or drugs or if the proportion of alcohol in his breath, blood or urine exceeds
- i) In the case of breath, 35 micrograms of alcohol in 100 ml
 - ii) In the case of blood, 80 milligrams of alcohol in 100 ml, and
 - iii) In the case of urine, 107 milligrams of alcohol in 100 millilitres.
- 7 Public Landings**
The Master of a vessel shall not place his vessel or allow it to be in such a situation as to obstruct or interfere with the access to any recognised landing place or leave it moored alongside any such landing place unattended without the permission of the person in charge of that landing place.
- 8 Water Sports**
Water Skiing, Wind Surfing, Kite Surfing, Jet Skiing, rowing, canoeing, paddleboarding or kayaking are not permitted in the Inner Harbour or Victoria Channel without prior permission from the Harbour Master.
- 9 Diving / Swimming**
9.1 No swimming or recreational diving is permitted inside the Inner Harbour or Victoria Channel
9.2 Diving elsewhere within Harbour Limits is only permitted with prior consent of the Harbour Master
9.3 Those wishing to undertake commercial diving operations should contact Port Operations during office hours.
- 10 Events**
Organisers of water based events anywhere inside Harbour Limits are required to provide a minimum of 14 days notice in writing to the Harbour Master, and provide event plans, risk assessments, and evidence of insurance as appropriate.
- 11 Rigging to be Secured**
Any vessel when moored within Harbour Limits fitted with a mast shall at all times ensure the rigging is secured so that it does not make undue noise.
- 12 Provision of Proper Fenders**
The Master and the owner of a vessel shall ensure that she is provided with a sufficient number of fenders of a type that would float in water and a size appropriate to the vessel and, when berthing and leaving or lying at a quay, pontoon, or against other vessels, the Master shall cause the vessel to be fended off from that quay or those other vessels so as to prevent damage to that quay, pontoons, those other vessels or any other property.
- 13 Access Across Decks**
The Master of a vessel alongside a quay, pontoon, or alongside any vessel already berthed within the Harbour shall, if required to do so by the Harbour Master or other authorised officer, give free access across the deck of his vessel for persons and goods to and from vessels berthed alongside his decks.
- 14 Unmooring of Vessels**
No person except the Harbour Master or a person acting on behalf of the Harbour Master in pursuance of his duties shall for any purpose whatsoever unmoor or cast off or loose any mooring of any vessel moored within the Harbour without the previous permission of the owner or lawful Master of such a vessel.
- 15 Vessels not to make fast to Unauthorised Objects**
The Master of a vessel shall not knowingly cause or permit any person to secure the vessel to any post, quay, ring, tide board, steps, vertical ladder, fender or any other thing or place not assigned for that purpose.
- 16 Fishing within Harbour Limits**
16.1 No person shall fish or use any fishing apparatus anywhere within the Inner Harbour.
- 16.2** The Master of a vessel shall ensure that no fishing apparatus is placed in or near the Victoria Channel in a manner that could pose a risk of being fouled by any vessel using the Victoria Channel or waters contiguous to it. If the owner of fishing apparatus shall not comply with any direction of the Harbour Master given to remove the apparatus, the Harbour Master may, on giving where reasonably practicable notice, remove such apparatus.
- 17 Registration & Insurance of Leisure Craft Vessels**
17.1 Every vessel must have their name or ID letters conspicuously marked on it.
17.2 Every vessel wishing to navigate within the Inner Harbour or use the Leisure Craft Facilities must have appropriate third party marine insurance to cover a minimum of £2 million.
- 18 Non Displacement Craft**
Hovercraft, WIG craft and Seaplanes are not permitted within Harbour Limits without prior permission from the Harbour Master.
- 19 Pontoon Access**
19.1 The Pontoon should be kept clear of obstructions at all times to maintain a safe means of access.



For guidance only – do not use for navigation



For guidance only – do not use for navigation

Emergency Contact

Numbers for recreational users

Coastguard

VHF Channel 16

Tel +44 (0)28 9146 3933
or 999

Belfast VTS

VHF Channel 12

Belfast Harbour Office

Tel +44 (0)28 9055 4422

Belfast Harbour Police

Tel +44 (0)28 9055 3000

Northern Ireland Fire & Rescue Service

Tel +44 (0)28 9266 4221
or 999

Northern Ireland Ambulance Service

Tel 999

Attention is drawn to the Notices to Mariners on Belfast Harbour's website www.belfast-harbour.co.uk; in particular to Notice to Mariners No.1 of 2023.

Constants

Port	H	M	Port	H	M
Ardglass	+0	23	Kyleakin	-4	28
Ayr	+0	56	Lamlash	+0	50
Ballycastle	-3	20	Larne	+0	4
Bangor	+0	10	Londonderry	-2	53
Buncrana, Lough Swilly	-5	6	Mull of Kintyre	-0	24
Carlingford Bar	+0	24	Newcastle, Dundrum Bay	+0	30
Campbeltown	+0	44	Oban	-5	24
Coleraine	-4	3	Point of Ayre	+0	3
Corran Narrows	-5	17	Portavogie	+0	15
Crinan	+5	48	Port Ellen (Islay)	-6	0
Donaghadee	+0	20	Port Patrick	+0	10
Douglas, IoM	+0	7	Portree	-4	38
Dublin	+0	39	Portrush	-4	33
East Tarbert (Lough Fyne)	+0	55	Red Bay	+0	6
Galway	-6	00	Strangford Bar	+0	16
Gigha Sound	+3	31	Strangford Quay	+1	52
Heysham	+0	11	Tobermory	-5	14
Killyleagh, Co. Down	+2	2	Warrenpoint, Co. Down	+0	30

Times & Heights of High & Low Waters

**All times are in (GMT)
Greenwich Mean Time.**

Daylight saving time will begin at 0100 hrs on Sunday 26th March and end at 0200hrs on Sunday 29th October. Between these dates one hour should be added to GMT times.

Heights refer to Harbour Datum which is also Admiralty Chart Datum.

Tidal predictions for Belfast have been computed by The United Kingdom Hydrographic Office (copyright reserved).

Phases of the Moon are reproduced, with permission, from data supplied by The United Kingdom Hydrographic Office.

Follow these steps carefully

- The International Regulations for the Prevention of Collision at Sea Rules apply throughout the Lough. Know them and follow them.
- Give early notice of your intentions as ferries approach very quickly.
- Check the ferry times in your area.
- Watch out for the ferry wash, especially when launching or retrieving boats.

For information on winter and summer berthing, please call **07760994176** or e-mail **m.office@belfast-harbour.co.uk**

Further details are also available on the Belfast Harbour website: **belfast-harbour.co.uk/port/marina**

Note: Belfast VTS are unable to help with Marina enquiries.



Levels of Tides

	Above Harbour Datum	
	Feet	Meters
Mean High Water, Spring Tides	11.4	3.5
Mean High Water, Neap Tides	9.7	2.9
Mean Low Water, Spring Tides	1.4	0.4
Mean Low Water, Neap Tides	3.5	1.1

Highest Spring Tide on record

5th January 1991	16.07	4.9
------------------	-------	-----

Average range of tide

(At Spring Tides)	10.0	3.1
(At Neap Tides)	6.2	1.9

The Tidal current runs at the rate of .33 knot on Spring Tides, and .25 knot on Neap Tides.

Harbour & ordnance datum

Harbour Datum Level of No.2 Clarendon Dry Dock Sill, which is also Admiralty Chart Datum.

Ordnance datum (1958)

6.61 feet (2.0 metres) above Harbour datum.

Conversion Table

Care has been taken in compiling the information given, but Belfast Harbour cannot be responsible for any inaccuracy, mis-statement or omission.

Moon symbols used:

- New
- Full



January 2023

	Time	Metres		Time	Metres		Time	Metres	
			8th Sunday	0541 0.9 1206 3.6 1804 0.7		16th Monday	0520 2.9 1126 1.2 1743 3.1 2359 0.9	24th Tuesday	0036 3.4 0628 0.6 1252 3.8 1907 0.2
1st Sunday	0023 0.8 0643 3.0 1234 1.1 1902 3.3		9th Monday	0026 3.1 0617 0.9 1239 3.6 1839 0.7		17th Tuesday	0627 2.9 1240 1.2 1853 3.1	25th Wednesday	0128 3.4 0716 0.6 1341 3.8 1956 0.2
2nd Monday	0124 0.8 0743 3.1 1339 1.1 2006 3.2		10th Tuesday	0059 3.1 0652 0.9 1313 3.6 1914 0.7		18th Wednesday	0111 0.9 0733 3.0 1356 1.1 2002 3.2	26th Thursday	0219 3.3 0804 0.6 1430 3.7 2046 0.3
3rd Tuesday	0219 0.9 0837 3.2 1439 1.0 2103 3.2		11th Wednesday	0132 3.1 0730 0.9 1347 3.5 1951 0.7		19th Thursday	0217 0.8 0835 3.1 1459 0.9 2104 3.3	27th Friday	0310 3.2 0853 0.7 1520 3.6 2138 0.5
4th Wednesday	0308 0.9 0927 3.3 1531 1.0 2154 3.2		12th Thursday	0206 3.0 0809 0.9 1422 3.5 2030 0.7		20th Friday	0313 0.8 0931 3.3 1552 0.7 2201 3.4	28th Saturday	0400 3.1 0945 0.8 1611 3.4 2237 0.7
5th Thursday	0351 0.9 1012 3.4 1616 0.9 2238 3.2		13th Friday	0245 3.0 0850 0.9 1501 3.4 2113 0.7		21st Saturday	0404 0.7 1024 3.5 1642 0.5 2254 3.5	29th Sunday	0452 3.0 1044 1.0 1707 3.2 2342 0.9
6th Friday	0430 0.9 1053 3.5 1654 0.8 2318 3.2		14th Saturday	0329 3.0 0935 1.0 1546 3.3 2201 0.8		22nd Sunday	0452 0.6 1114 3.6 1731 0.3 2345 3.5	30th Monday	0550 2.9 1155 1.1 1814 3.1
7th Saturday	0506 0.9 1131 3.6 1730 0.8 2354 3.2		15th Sunday	0420 2.9 1026 1.1 1639 3.2 2255 0.9		23rd Monday	0540 0.6 1203 3.7 1819 0.2	31st Tuesday	0047 1.0 0659 2.9 1307 1.1 1937 2.9

February 2023

	Time	Metres	Time	Metres
1st Wednesday	0148 0808 1414 2046	1.0 3.0 1.1 3.0	8th Wednesday	0039 3.0 0630 0.7 1247 3.5 1850 0.5
2nd Thursday	0244 0907 1514 2141	1.0 3.1 0.9 3.0	9th Thursday	0059 3.0 0705 0.7 1314 3.5 1923 0.5
3rd Friday	0332 0956 1601 2227	1.0 3.3 0.8 3.1	10th Friday	0128 3.1 0739 0.7 1348 3.5 1958 0.5
4th Saturday	0413 1038 1639 2306	0.9 3.4 0.7 3.1	11th Saturday	0205 3.1 0816 0.7 1427 3.4 2036 0.5
5th Sunday	0448 1116 1712 2341	0.8 3.5 0.7 3.1	12th Sunday	0246 3.0 0856 0.8 1511 3.3 2120 0.6
6th Monday	0522 1151 1744	0.8 3.5 0.6	13th Monday	0331 3.0 0942 0.9 1601 3.2 2211 0.8
7th Tuesday	0012 0556 1221 1817	3.0 0.7 3.5 0.6	14th Tuesday	0426 2.9 1039 1.0 1705 3.1 2313 1.0
			15th Wednesday	0537 2.8 1158 1.1 1822 3.0

	Time	Metres	Time	Metres
16th Thursday	0038 0657 1342 1941	1.1 2.8 1.0 3.0	24th Friday	0150 3.3 0735 0.5 1406 3.7 2012 0.3
17th Friday	0205 0814 1450 2054	1.0 3.0 0.8 3.1	25th Saturday	0235 3.2 0819 0.5 1451 3.5 2057 0.5
18th Saturday	0306 0920 1545 2154	0.8 3.2 0.5 3.2	26th Sunday	0320 3.1 0905 0.7 1538 3.3 2147 0.8
19th Sunday	0358 1014 1635 2245	0.6 3.4 0.3 3.3	27th Monday	0406 3.1 0958 0.8 1628 3.1 2254 1.0
20th Monday	0444 1102 1720 2332	0.5 3.6 0.1 3.4	28th Tuesday	0457 2.9 1113 1.0 1726 2.9
21st Tuesday	0528 1148 1804	0.5 3.7 0.0		
22nd Wednesday	0018 0611 1234 1847	3.4 0.4 3.8 0.1		
23rd Thursday	0104 0653 1320 1930	3.3 0.4 3.7 0.2		

March 2023

	Time	Metres	Time	Metres	Time	Metres	Time	Metres
1st Wednesday	0008 0559 1236 1900	1.2 2.8 1.1 2.7	8th Wednesday	0531 1152 1748	0.6 3.4 0.4	16th Thursday	0506 1142 1806	2.8 1.1 2.8
2nd Thursday	0116 0729 1347 2031	1.2 2.9 1.0 2.7	9th Thursday	0007 0604 1212 1820	3.0 0.6 3.4 0.4	17th Friday	0023 0634 1334 1932	1.2 2.8 0.9 2.8
3rd Friday	0217 0843 1450 2126	1.1 3.0 0.9 2.8	10th Friday	0023 0637 1241 1852	3.1 0.5 3.4 0.4	18th Saturday	0156 0801 1439 2049	1.0 2.9 0.6 3.0
4th Saturday	0310 0935 1539 2209	1.0 3.2 0.7 2.9	11th Saturday	0054 0709 1317 1926	3.1 0.5 3.4 0.4	19th Sunday	0256 0909 1533 2144	0.8 3.2 0.3 3.2
5th Sunday	0352 1016 1615 2246	0.9 3.3 0.6 3.0	12th Sunday	0131 0744 1358 2004	3.2 0.5 3.4 0.5	20th Monday	0346 1000 1620 2230	0.6 3.4 0.1 3.3
6th Monday	0426 1053 1646 2319	0.7 3.4 0.5 3.0	13th Monday	0212 0824 1444 2048	3.1 0.6 3.3 0.6	21st Tuesday	0431 1045 1703 2313	0.5 3.6 0.0 3.4
7th Tuesday	0459 1126 1717 2348	0.7 3.4 0.5 3.0	14th Tuesday	0257 0911 1538 2139	3.1 0.8 3.1 0.8	22nd Wednesday	0511 1129 1743 2356	0.4 3.7 0.0 3.4
			15th Wednesday	0352 1011 1646 2244	2.9 0.9 2.9 1.1	23rd Thursday	0550 1212 1821	0.4 3.7 0.1
						24th Friday	0038 0628 1255 1859	3.3 0.4 3.6 0.3
						25th Saturday	0120 0707 1339 1938	3.3 0.4 3.5 0.4
						26th Sunday <small>British Summer Time Commences</small>	0201 0748 1422 2019	3.3 0.5 3.4 0.6
						27th Monday	0243 0832 1507 2104	3.2 0.6 3.2 0.9
						28th Tuesday	0327 0921 1555 2201	3.1 0.8 3.0 1.1
						29th Wednesday	0416 1031 1651 2326	3.0 1.0 2.7 1.3
						30th Thursday	0513 1201 1803	2.9 1.1 2.6
						31st Friday	0038 0625 1313 2006	1.3 2.8 1.0 2.6

April 2023

	Time	Metres	Time	Metres	Time	Metres	Time	Metres			
1st Saturday	0142	1.2	8th Saturday	0608	0.5	16th Sunday	0137	1.1	24th Monday	0131	3.4
	0805	2.9		1212	3.4		0748	3.0		0724	0.5
	1414	0.9	9th Sunday	0025	3.3		1422	0.5		1355	3.2
	2100	2.7		0643	0.5		2034	3.0		1949	0.8
2nd Sunday	0238	1.1		1252	3.4	17th Monday	0238	0.8	25th Tuesday	0212	3.4
	0902	3.0		1859	0.4		0851	3.3		0807	0.6
	1503	0.7	10th Monday	0105	3.3		1514	0.2		1439	3.1
	2141	2.9		0720	0.5		2125	3.2		2033	1.0
3rd Monday	0322	0.9		1337	3.4	18th Tuesday	0328	0.7	26th Wednesday	0256	3.3
	0944	3.2		1940	0.6		0940	3.5		0855	0.8
	1541	0.6	11th Tuesday	0149	3.3		1559	0.1		1527	2.9
	2215	3.0		0804	0.6		2209	3.3		2124	1.1
4th Tuesday	0358	0.7		1429	3.2	19th Wednesday	0411	0.5	27th Thursday	0343	3.2
	1019	3.3		2026	0.7		1025	3.6		0956	0.9
	1614	0.5	12th Wednesday	0238	3.2		1639	0.1		1621	2.7
	2246	3.0		0855	0.7		2251	3.4		2236	1.3
5th Wednesday	0431	0.6		1529	3.1	20th Thursday	0451	0.4	28th Friday	0437	3.0
	1050	3.3		2122	1.0		1107	3.6		1119	1.0
	1646	0.4	13th Thursday	0338	3.0		1717	0.2		1723	2.6
	2312	3.1		1003	0.9		2332	3.4		2354	1.3
6th Thursday	0503	0.6		1641	2.9	21st Friday	0528	0.4	29th Saturday	0539	2.9
	1114	3.4		2233	1.1		1149	3.6		1231	1.0
	1717	0.4	14th Friday	0452	2.9		1754	0.3		1852	2.6
	2329	3.1		1151	0.9	22nd Saturday	0011	3.4	30th Sunday	0059	1.3
7th Friday	0535	0.5		1802	2.8		0606	0.4		0653	2.9
	1139	3.4	15th Saturday	0014	1.2		1231	3.5		1331	0.9
	1749	0.4		0621	2.9		1831	0.5		2014	2.7
	2352	3.2		1318	0.7	23rd Sunday	0051	3.4			
				1928	2.9		0644	0.5			
							1312	3.4			
							1909	0.6			

May 2023

	Time	Metres	Time	Metres	Time	Metres	Time	Metres		
			8th Monday	0005 3.4 0624 0.5 1236 3.4 1839 0.6			16th Tuesday	0208 0.9 0826 3.3 1447 0.3 2100 3.2	24th Wednesday	0146 3.5 0748 0.7 1413 3.0 2009 1.0
1st Monday	0156 1.1 0806 3.0 1421 0.7 2057 2.9		9th Tuesday	0050 3.4 0707 0.5 1327 3.3 1925 0.7			17th Wednesday	0302 0.7 0917 3.4 1533 0.3 2145 3.3	25th Thursday	0229 3.4 0832 0.7 1500 2.9 2056 1.1
2nd Tuesday	0244 1.0 0856 3.1 1502 0.6 2131 3.0		10th Wednesday	0139 3.4 0757 0.5 1425 3.2 2018 0.8			18th Thursday	0348 0.6 1004 3.5 1614 0.3 2228 3.3	26th Friday	0314 3.3 0922 0.8 1552 2.8 2149 1.2
3rd Wednesday	0324 0.8 0935 3.2 1537 0.5 2203 3.1		11th Thursday	0233 3.3 0856 0.6 1529 3.0 2120 1.0			19th Friday	0430 0.6 1047 3.5 1652 0.4 2309 3.4	27th Saturday	0403 3.2 1022 0.9 1649 2.7 2252 1.2
4th Thursday	0359 0.7 1008 3.3 1611 0.4 2231 3.2		12th Friday	0334 3.2 1011 0.7 1640 2.9 2232 1.1			20th Saturday	0510 0.6 1129 3.4 1730 0.6 2348 3.4	28th Sunday	0458 3.0 1131 0.9 1750 2.7
5th Friday	0433 0.6 1039 3.4 1644 0.4 2256 3.3		13th Saturday	0444 3.1 1137 0.7 1756 2.9 2351 1.1			21st Sunday	0549 0.6 1209 3.3 1808 0.7	29th Monday	0000 1.3 0559 3.0 1237 0.9 1854 2.7
6th Saturday	0508 0.6 1112 3.4 1719 0.4 2327 3.3		14th Sunday	0606 3.1 1254 0.6 1909 3.0			22nd Monday	0026 3.4 0628 0.6 1248 3.2 1847 0.8	30th Tuesday	0102 1.2 0703 3.0 1331 0.8 1951 2.9
7th Sunday	0544 0.5 1151 3.4 1757 0.5		15th Monday	0105 1.0 0725 3.2 1355 0.4 2009 3.1			23rd Tuesday	0105 3.5 0707 0.6 1329 3.1 1927 0.9	31st Wednesday	0156 1.1 0800 3.1 1417 0.7 2038 3.0

June 2023

	Time	Metres	Time	Metres	Time	Metres	Time	Metres		
			8th Thursday	0135 3.5 0757 0.4 1422 3.2 2015 0.8			16th Friday	0326 0.8 0945 3.3 1550 0.6 2207 3.3	24th Saturday	0244 3.4 0847 0.7 1520 2.9 2111 1.0
1st Thursday	0243 0.9 0848 3.2 1457 0.6 2118 3.1		9th Friday	0230 3.5 0856 0.5 1525 3.1 2114 0.9			17th Saturday	0413 0.7 1031 3.3 1631 0.7 2249 3.4	25th Sunday	0326 3.3 0933 0.8 1610 2.8 2159 1.1
2nd Friday	0325 0.8 0931 3.3 1536 0.5 2155 3.2		10th Saturday	0328 3.4 1002 0.5 1630 3.0 2217 1.0			18th Sunday	0456 0.7 1114 3.2 1711 0.8 2329 3.4	26th Monday	0412 3.2 1024 0.8 1704 2.8 2252 1.1
3rd Saturday	0405 0.7 1011 3.4 1615 0.5 2231 3.3		11th Sunday	0431 3.3 1111 0.5 1736 3.0 2322 1.0			19th Monday	0536 0.7 1153 3.2 1750 0.8	27th Tuesday	0506 3.1 1121 0.9 1759 2.8 2352 1.2
4th Sunday	0446 0.6 1053 3.4 1656 0.5 2310 3.4		12th Monday	0542 3.3 1220 0.5 1840 3.0			20th Tuesday	0007 3.5 0614 0.7 1230 3.1 1828 0.9	28th Wednesday	0606 3.0 1225 0.9 1855 2.9
5th Monday	0528 0.5 1138 3.4 1739 0.6 2354 3.5		13th Tuesday	0028 1.0 0655 3.3 1322 0.5 1939 3.1			21st Wednesday	0044 3.5 0651 0.7 1308 3.0 1906 0.9	29th Thursday	0058 1.1 0708 3.1 1326 0.8 1948 3.0
6th Tuesday	0613 0.5 1228 3.4 1827 0.7		14th Wednesday	0133 0.9 0759 3.3 1417 0.5 2032 3.2			22nd Thursday	0123 3.5 0728 0.7 1348 3.0 1945 1.0	30th Friday	0201 1.0 0807 3.1 1420 0.7 2038 3.1
7th Wednesday	0043 3.5 0703 0.4 1323 3.3 1919 0.7		15th Thursday	0233 0.8 0855 3.3 1506 0.5 2121 3.2			23rd Friday	0203 3.5 0806 0.7 1432 2.9 2026 1.0		

July 2023

	Time	Metres	Time	Metres	
1st Saturday	0255	0.9	8th Saturday	0219	3.6
	0900	3.3		0841	0.3
	1508	0.7		1508	3.2
	2124	3.2		2055	0.7
2nd Sunday	0345	0.7	9th Sunday	0312	3.6
	0950	3.4		0938	0.4
	1554	0.6		1605	3.1
	2210	3.4		2151	0.8
3rd Monday	0432	0.6	10th Monday	0408	3.5
	1039	3.4		1039	0.5
	1640	0.6		1703	3.1
	2257	3.5		2250	0.9
4th Tuesday	0519	0.4	11th Tuesday	0508	3.3
	1129	3.4		1144	0.6
	1728	0.6		1803	3.0
	2345	3.5		2355	0.9
5th Wednesday	0606	0.3	12th Wednesday	0617	3.2
	1221	3.4		1249	0.7
	1817	0.7		1903	3.0
6th Thursday	0035	3.6	13th Thursday	0103	1.0
	0656	0.3		0730	3.1
	1315	3.3		1348	0.8
	1909	0.7		2003	3.1
7th Friday	0127	3.6	14th Friday	0209	1.0
	0748	0.3		0835	3.1
	1411	3.2		1443	0.8
	2002	0.7		2059	3.2
8th Saturday	0309	0.9	15th Saturday	0309	0.9
	0932	3.1		0932	3.1
	1531	0.8		1531	0.8
	2149	3.3		2149	3.3

	Time	Metres	Time	Metres	
16th Sunday	0401	0.8	24th Monday	0244	3.4
	1021	3.1		0851	0.6
	1614	0.9		1516	2.9
	2234	3.4		2115	0.9
17th Monday	0444	0.7	25th Tuesday	0324	3.3
	1104	3.1		0935	0.7
	1653	0.9		1602	2.9
	2315	3.4		2202	1.0
18th Tuesday	0522	0.7	26th Wednesday	0412	3.2
	1142	3.1		1025	0.8
	1730	0.9		1657	2.9
	2351	3.5		2256	1.1
19th Wednesday	0556	0.7	27th Thursday	0511	3.1
	1216	3.0		1124	0.9
	1805	0.9		1758	2.9
20th Thursday	0026	3.5	28th Friday	0002	1.2
	0629	0.6		0622	3.0
	1248	3.0		1236	1.0
	1841	0.9		1902	2.9
21st Friday	0100	3.5	29th Saturday	0128	1.1
	0702	0.6		0732	3.0
	1322	3.0		1351	0.9
	1916	0.9		2003	3.0
22nd Saturday	0134	3.4	30th Sunday	0237	0.9
	0736	0.6		0838	3.1
	1358	3.0		1451	0.8
	1954	0.9		2101	3.2
23rd Sunday	0208	3.4	31st Monday	0333	0.7
	0812	0.6		0936	3.3
	1435	3.0		1542	0.7
	2033	0.9		2154	3.4

September 2023

	Time	Metres	Time	Metres	Time	Metres	Time	Metres
1st Friday	0537 1148 1742	0.1 3.5 0.5	8th Friday	0501 1142 1735	2.9 1.3 3.0	16th Saturday	0529 1153 1743 2354	0.6 3.1 0.8 3.5
2nd Saturday	0001 0619 1233 1825	3.8 0.1 3.4 0.5	9th Saturday	0011 0630 1253 1857	1.2 2.7 1.3 3.0	17th Sunday	0559 1208 1814	0.6 3.2 0.7
3rd Sunday	0048 0700 1320 1908	3.8 0.2 3.4 0.5	10th Sunday	0126 0809 1358 2016	1.1 2.8 1.3 3.1	18th Monday	0019 0629 1234 1847	3.5 0.6 3.2 0.7
4th Monday	0135 0742 1407 1953	3.7 0.3 3.4 0.6	11th Monday	0236 0907 1454 2111	1.0 2.9 1.1 3.3	19th Tuesday	0053 0701 1308 1921	3.5 0.6 3.3 0.8
5th Tuesday	0223 0827 1455 2041	3.6 0.5 3.3 0.7	12th Tuesday	0331 0952 1537 2154	0.8 3.0 1.0 3.4	20th Wednesday	0132 0737 1348 2000	3.5 0.6 3.3 0.8
6th Wednesday	0311 0916 1543 2135	3.4 0.8 3.2 0.9	13th Wednesday	0407 1028 1611 2232	0.7 3.1 0.9 3.4	21st Thursday	0216 0819 1432 2046	3.4 0.8 3.2 0.9
7th Thursday	0402 1020 1635 2247	3.2 1.1 3.1 1.1	14th Thursday	0434 1101 1641 2305	0.6 3.1 0.8 3.5	22nd Friday	0307 0907 1524 2141	3.2 1.0 3.1 1.1
			15th Friday	0501 1130 1711 2333	0.6 3.1 0.8 3.5	23rd Saturday	0412 1007 1635 2258	3.0 1.2 3.0 1.2
						24th Sunday	0532 1129 1759	2.9 1.3 2.9
						25th Monday	0102 0655 1323 1920	1.1 2.9 1.3 3.0
						26th Tuesday	0211 0815 1426 2031	0.8 3.0 1.0 3.3
						27th Wednesday	0305 0914 1517 2125	0.5 3.3 0.8 3.5
						28th Thursday	0352 1001 1600 2212	0.3 3.4 0.7 3.7
						29th Friday	0434 1043 1640 2256	0.2 3.5 0.6 3.8
						30th Saturday	0513 1126 1719 2340	0.1 3.5 0.5 3.8

October 2023

	Time	Metres	Time	Metres	Time	Metres	Time	Metres
			8th Sunday	0545 2.7 1217 1.5 1805 3.0				
1st Sunday	0551 0.2 1209 3.5 1758 0.5		9th Monday	0052 1.2 0744 2.7 1322 1.4 1938 3.1			16th Monday	0527 0.6 1136 3.4 1746 0.8 2350 3.5
2nd Monday	0025 3.8 0630 0.4 1252 3.5 1840 0.6		10th Tuesday	0158 1.0 0841 2.8 1420 1.3 2038 3.2			17th Tuesday	0558 0.6 1205 3.4 1819 0.7
3rd Tuesday	0111 3.7 0710 0.5 1336 3.5 1924 0.6		11th Wednesday	0251 0.9 0923 3.0 1505 1.1 2123 3.3			18th Wednesday	0027 3.5 0633 0.7 1242 3.4 1856 0.8
4th Wednesday	0157 3.5 0752 0.8 1421 3.4 2010 0.8		12th Thursday	0328 0.8 0958 3.1 1541 1.0 2159 3.4			19th Thursday	0110 3.5 0712 0.8 1324 3.4 1938 0.8
5th Thursday	0244 3.3 0839 1.0 1508 3.3 2103 0.9		13th Friday	0358 0.7 1028 3.2 1612 0.9 2231 3.5			20th Friday	0159 3.4 0756 0.9 1412 3.3 2027 0.9
6th Friday ☾	0334 3.1 0936 1.3 1558 3.2 2213 1.1		14th Saturday ●	0427 0.6 1056 3.2 1643 0.8 2258 3.5			21st Saturday	0256 3.2 0848 1.1 1509 3.2 2129 1.1
7th Saturday	0430 2.9 1100 1.4 1655 3.1 2339 1.2		15th Sunday	0457 0.6 1118 3.3 1714 0.8 2321 3.5			22nd Sunday ☽	0405 3.0 0954 1.3 1619 3.1 2258 1.1
							23rd Monday	0523 2.9 1121 1.4 1741 3.1
							24th Tuesday	0041 1.0 0647 3.0 1257 1.3 1905 3.2
							25th Wednesday	0148 0.7 0800 3.1 1402 1.1 2013 3.4
							26th Thursday	0242 0.5 0854 3.3 1454 0.9 2107 3.6
							27th Friday	0328 0.3 0939 3.5 1538 0.7 2153 3.7
							28th Saturday ○	0409 0.3 1022 3.6 1618 0.6 2237 3.8
							29th Sunday <small>British Summer Time Ends</small>	0447 0.3 1103 3.6 1657 0.6 2321 3.8
							30th Monday	0525 0.5 1145 3.6 1737 0.6
							31st Tuesday	0004 3.7 0604 0.6 1226 3.6 1819 0.6

November 2023

	Time	Metres		Time	Metres		Time	Metres
1st Wednesday	0049	3.6	8th Wednesday	0109	1.1	16th Thursday	0012	3.5
	0644	0.8		0754	2.8		0614	0.8
	1309	3.6	9th Thursday	1335	1.4		1227	3.5
	1902	0.7		1944	3.1	24th Friday	1844	0.8
2nd Thursday	0133	3.4		0202	1.0		0211	0.6
	0727	1.0		0840	3.0	17th Friday	0917	3.4
	1352	3.6	10th Friday	1424	1.2		1514	0.8
	1948	0.8		2037	3.3	25th Saturday	2135	3.6
3rd Friday	0219	3.2		0244	0.9		0300	0.5
	0812	1.2		0916	3.1	18th Saturday	0917	3.4
	1437	3.5	11th Saturday	1505	1.1		1514	0.8
	2039	0.9		2118	3.4	26th Sunday	2135	3.6
4th Saturday	0308	3.1		0320	0.8		0344	0.5
	0904	1.3		0949	3.3	19th Sunday	1001	3.5
	1526	3.4	12th Sunday	1541	0.9		1559	0.8
	2140	1.1		2154	3.4	27th Monday	2221	3.6
5th Sunday	0402	2.9		0352	0.7		0425	0.6
	1012	1.5		1020	3.4	20th Monday	1044	3.6
	1620	3.2		1614	0.9		1643	0.7
	2256	1.2	13th Monday	2226	3.5		2306	3.6
6th Monday	0504	2.7		0425	0.7	21st Tuesday	0506	0.7
	1129	1.5		1047	3.4		1126	3.6
	1720	3.1	14th Tuesday	1649	0.8	28th Tuesday	1725	0.7
	0007	1.2		2256	3.5		2349	3.5
7th Tuesday	0634	2.7		0459	0.7	29th Wednesday	0546	0.8
	1236	1.5		1113	3.5		1207	3.7
	1832	3.1	15th Wednesday	1724	0.8	30th Thursday	1807	0.7
				2331	3.5		0031	3.4
				0535	0.7		0627	1.0
				1146	3.5		1248	3.7
				1802	0.7		1849	0.8
						22nd Wednesday		
							0008	0.8
							0629	3.0
							1220	1.2
							1842	3.3
						23rd Thursday	0115	0.7
							0734	3.2
							1327	1.1
							1949	3.4

December 2023

	Time	Metres	Time	Metres	
1st Friday	0114 0708 1329 1932	3.3 1.1 3.6 0.8	8th Friday	0107 0732 1335 1941	1.0 2.9 1.3 3.2
2nd Saturday	0157 0750 1413 2017	3.2 1.2 3.6 0.9	9th Saturday	0157 0823 1425 2033	1.0 3.1 1.2 3.3
3rd Sunday	0243 0836 1458 2106	3.0 1.2 3.5 1.0	10th Sunday	0240 0907 1509 2118	0.9 3.2 1.0 3.4
4th Monday	0333 0927 1547 2200	2.9 1.3 3.4 1.0	11th Monday	0320 0947 1549 2159	0.8 3.3 0.9 3.4
5th Tuesday ☾	0427 1024 1640 2303	2.8 1.4 3.2 1.1	12th Tuesday ●	0359 1023 1630 2239	0.8 3.4 0.8 3.5
6th Wednesday	0527 1131 1739	2.8 1.4 3.1	13th Wednesday	0438 1058 1711 2321	0.8 3.5 0.7 3.5
7th Thursday	0008 0631 1237 1842	1.1 2.8 1.4 3.1	14th Thursday	0520 1137 1753	0.8 3.6 0.7
			15th Friday	0006 0604 1220 1840	3.5 0.8 3.6 0.6

	Time	Metres	Time	Metres	
16th Saturday	0055 0652 1308 1930	3.4 0.9 3.6 0.6	24th Sunday	0234 0854 1455 2120	0.7 3.3 0.9 3.4
17th Sunday	0149 0743 1359 2024	3.3 0.9 3.6 0.6	25th Monday	0324 0944 1547 2211	0.8 3.4 0.8 3.4
18th Monday	0247 0838 1453 2123	3.2 1.0 3.6 0.6	26th Tuesday	0409 1031 1634 2258	0.8 3.5 0.8 3.4
19th Tuesday ☽	0348 0936 1552 2226	3.1 1.0 3.5 0.7	27th Wednesday ○	0452 1114 1717 2341	0.9 3.6 0.7 3.3
20th Wednesday	0452 1038 1657 2333	3.1 1.1 3.4 0.7	28th Thursday	0533 1155 1758	0.9 3.6 0.7
21st Thursday	0558 1144 1810	3.1 1.1 3.4	29th Friday	0021 0612 1233 1837	3.2 1.0 3.7 0.7
22nd Friday	0038 0702 1252 1921	0.7 3.1 1.1 3.4	30th Saturday	0058 0650 1311 1914	3.1 1.0 3.6 0.7
23rd Saturday	0139 0800 1356 2024	0.7 3.2 1.0 3.4	31st Sunday	0136 0727 1350 1951	3.1 1.0 3.6 0.7

Contact Numbers

Belfast Harbour

Harbour Office

Tel: +44 (0)28 9055 4422

VTS

Callsign

"Belfast VTS"



Harbour Police

Tel: +44 (0)28 9055 3000

Marina Enquires

0776 099 4176

River Lagan (DSD)

River Manager

Tel: +44 (0)28 9027 7642

Weir Control / River Warden

Tel: +44 (0)28 9031 5304

Weir Control

VHF Channel 71

Callsign "Lagan Weir"



*Time & tide
wait for
no man*

Harbour Office
Corporation Square
Belfast BT1 3AL
+44 28 9055 4422

belfast-harbour.co.uk

