

# Belfast Harbour

Tide Tables

# 2022



**FREE**

20

22

# Safety First on Belfast Lough

## Welcome to Belfast Harbour

Recreational Craft Must Contact "Belfast VTS"  
on **VHF Channel 12** for traffic clearance to enter/exit.

All users of the Lough are expected to operate in a safe & responsible manner.

Users are required to always comply with international collision regulations.

Users are reminded to check the sailing & arrival times of ferries in the area.

Users are advised of the possibility of unexpected wavewash generated by shipping using Belfast Harbour.



**WARNING**  
Beware of unexpected waves and spray  
when launching or recovering craft



**WARNING**  
Beware of unexpected waves  
and spray



# Welcome to **Belfast Harbour**

---

I am pleased to present the 2022 Tide Tables for Belfast Harbour.

I trust you will find the information contained within to be beneficial for your safe enjoyment of Belfast Harbour.

May I take this opportunity to draw your attention to the Notice to Mariners No.1 of 2022. This notice is a summary of all notices in force at the start of 2022 and can be found on our website [www.belfast-harbour.co.uk](http://www.belfast-harbour.co.uk).

I encourage you to visit the website regularly to acquaint yourself with the most up-to-date navigational safety information.

I wish you a safe and enjoyable visit to Belfast Harbour.



**Captain K G Allen**  
Belfast Harbour Master



# Safety First

## Lifejackets

---

### Lifejackets save lives

#### Why wear a lifejacket?

If you're going afloat for pleasure, working around water or fishing, wear your lifejacket or buoyancy aid. It's useless otherwise.

Accidents can happen at any time in any weather. Good training and common sense help, but lives could be saved every year if people wore correctly-fitted, well-maintained lifejackets or buoyancy aids.

The water around the UK is cold all year round. It's surprisingly difficult to get back on board your boat once you're in the water, and the cold water will affect how your body works.

Wearing a lifejacket with crotch straps and spray hood could **double** your chances of survival, and increase your likelihood of being found.

See how crotch straps make a difference on MCA's YouTube channel.

#### What happens when you fall into cold water

Your blood pressure increases and you begin gasping for air.

If you're not wearing a lifejacket that lifts your airways out of the water, you can breathe in enough water to drown.

#### What to do if you fall into cold water

- Don't attempt to swim unless you're really close to your boat
- Relax as much as you can
- Find something to hold onto if you can, while your body adapts and you regain control of your breathing

After this, you should be able to call for help or get back on board quickly. Your rescuers should find it easier to help you if you're wearing a lifejacket.

### **The activities that need lifejackets the most**

Statistics tell us that **commercial fishing, angling and sailing** are the activities where most lives might be saved by buoyancy-wear. Every year a panel of experts meets to analyse the year's fatal maritime incidents.

The panel makes a judgment about whether it is probable, possible or unlikely that the person involved could have been saved had they been wearing a lifejacket or buoyancy aid.

Between 2007 and 2010 the panel agreed that 86 lives might have been saved if those involved had been wearing a lifejacket or buoyancy aid.

Make sure that you wear a lifejacket or buoyancy aid as recommended by your sport's national governing body. Have a great trip, but enjoy it safely.

### **Advice for fishermen**

MCA recommends that commercial fishermen wear a lifejacket or buoyancy aid at all times whilst on deck.



Belfast VTS can be contacted via



**Channel 12VHF**







# Information for Leisure Craft visiting Belfast Harbour

---

Following a significant extension, Belfast Harbour Marina boasts 775m of pontoons consisting of 85 berths, each with water and pay-as-you-go electricity connections.

The Marina can handle recreational vessels up to 15m LOA and maximum draught of 4.0m. Vessels greater than 4m draught or 15m length overall wishing to visit Belfast should contact the Harbour Master's Office prior to arrival. For more information on visiting the Marina, including tariffs, please visit the website - [www.belfast-harbour.co.uk/port/marina](http://www.belfast-harbour.co.uk/port/marina)

The following information has been provided for the benefit of recreational users, however current Notice to Mariners and guides should always be consulted on Belfast Harbour's website [www.belfast-harbour.co.uk/port/navigation-pilotage/notice-to-mariners](http://www.belfast-harbour.co.uk/port/navigation-pilotage/notice-to-mariners)

In addition to the code of conduct (p8-11 overleaf), users of leisure craft should refer to and abide by 'Operating Rules within Belfast Harbour' which are available at [www.belfast-harbour.co.uk/port/marina/operating-rules](http://www.belfast-harbour.co.uk/port/marina/operating-rules)

## Belfast Harbour Code of Conduct

---

### 1 Conduct of Transits to and from Berths.

- 1.1 Vessels transiting to and from berths must do so under power, yachts should have their sails down.
- 1.2 No vessels are permitted to be underway inside Harbour Limits during hours of darkness, unless vessels are fitted with the appropriate navigation lights as prescribed by the Collision Regulations.
- 1.3 Recreational craft not fitted with operational radar are not normally permitted to make transits of the Inner Harbour or Victoria Channel when visibility is less than 0.5 nautical miles.
- 1.4 Leisure craft are not permitted in Herdman Channel, or Musgrave Channel unless navigating to the Connswater.
- 1.5 Except where these Guidelines otherwise require; The International Regulations for Prevention of Collision at Sea (Collision Regulations) apply throughout Belfast Harbour Limits.

In particular, attention is drawn to Rule 9, narrow channels – vessels should keep as near to the outer limit of the channel or fairway which lies on her starboard side as is safe and practicable.

- 1.6 The Master of a leisure craft shall ensure it is manoeuvred in a manner so as not to cause injury, nuisance, excessive wash, damage to property, loss of life, and must keep well clear of vessels fishing, dredging or otherwise working whilst underway.
- 1.7 All vessels must be equipped and manned to undertake all transits safely.
- 1.8 All vessels should carry Admiralty Chart 1752 or equivalent.
- 1.9 All vessels must carry sufficient number and type of lifejackets for those on board.
- 1.10 No sightseeing or stopping is permitted during transit.
- 1.11 Leisure craft must proceed at a safe and appropriate speed, and not exceed a maximum speed of 6 knots to South-West of the Twin

Beacons unless granted prior consent by the Harbour Master.

- 1.12 Craft must maintain minimum safe speed when navigating near small craft moorings.
- 1.13 The Master of any vessel must comply with any temporary speed restrictions imposed by Port Control.

## **2 Compliance with Directions**

The Master of any vessel shall comply with any direction given to him by the Harbour Master or an officer designated by the Harbour Master to do so on his behalf.

## **3 Priority of Vessels within Belfast Harbour Limits**

- 3.1 Leisure craft shall not impede the passage of any vessel greater than 20m in length navigating within the inner Harbour or Victoria Channel.
- 3.2 Leisure craft, which are not confined to the fairway, shall not make use of the fairway so as to obstruct other vessels which can navigate only within the fairway, and when navigating across the Channel or through the inner Harbour shall do so by the shortest route that will avoid such obstruction.
- 3.3 Any vessel upon encountering a vessel exhibiting the signals prescribed by the Collision Regulations for vessels constrained by their draught, shall afford such vessels a minimum distance of 5 cables ahead and 2 cables astern.

## **4 Carriage of VHF / Mobile Telephone & Communication with Port Control**

- 4.1 Belfast Harbour strongly recommend all vessels navigating within Harbour Limits to carry VHF radio. Where carried, VHF radio watch is to be maintained on Ch 12 when within port limits.
- 4.2 Where no VHF is carried, a mobile telephone should be used in cases of emergency to contact Port Control.
- 4.3 Port Control, callsign "Belfast VTS", maintains a listening watch at all times on VHF channel 12. Port Control is also contactable in case of emergency by telephone on - 028 9055 3010.
- 4.4 Inward vessels must report to Port Control when:
  - Entering the Main Channel, stating location
  - Arriving at their berth
- 4.5 Departing vessels must report to Port Control when:
  - Prior to departing their berth
  - Upon exiting the main channel, stating location
- 4.6 Vessels wishing to cross the Victoria Channel to the South-West of No.2 buoy must contact Port Control.
- 4.7 Any emergencies should be communicated firstly to Belfast Coastguard on VHF Ch 16, and to Port Control.
- 4.8 Vessels should avoid excessive use of VHF Ch 12 wherever possible.

# Belfast Harbour

## Tide Tables 2022

### 5 Age of Master

No person under the age of 16 years shall steer or navigate within the Harbour any power driven vessel unless in possession of an appropriate RYA qualification or accompanied by a person of 18 years or older.

### 6 Navigation under the influence of Alcohol or Drugs Prohibited

The Master of any vessel shall not move the vessel within Harbour Limits if his ability to do so is impaired by drink or drugs or if the proportion of alcohol in his breath, blood or urine exceeds

- i) In the case of breath, 35 micrograms of alcohol in 100 ml
- ii) In the case of blood, 80 milligrams of alcohol in 100 ml, and
- iii) In the case of urine, 107 milligrams of alcohol in 100 millilitres.

### 7 Public Landings

The Master of a vessel shall not place his vessel or allow it to be in such a situation as to obstruct or interfere with the access to any recognised landing place or leave it moored alongside any such landing place unattended without the permission of the person in charge of that landing place.

### 8 Water Sports

Water Skiing, Wind Surfing, Kite Surfing, Jet Skiing, rowing, canoeing or kayaking are not permitted in the Inner Harbour or Victoria Channel without prior permission from the Harbour Master.

### 9 Diving / Swimming

- 9.1 No swimming or recreational diving is permitted inside the Inner Harbour or Victoria Channel
- 9.2 Diving elsewhere within Harbour Limits is only permitted with prior consent of the Harbour Master
- 9.3 Those wishing to undertake commercial diving operations should contact Port Operations during office hours.

### 10 Events

Organisers of water based events anywhere inside Harbour Limits are required to provide a minimum of 14 days notice in writing to the Harbour Master, and provide event plans, risk assessments, and evidence of insurance as appropriate.

### 11 Rigging to be Secured

Any vessel when moored within Harbour Limits fitted with a mast shall at all times ensure the rigging is secured so that it does not make undue noise.

### 12 Provision of Proper Fenders

The Master and the owner of a vessel shall ensure that she is provided with a sufficient number of fenders of a type that would float in water and a size appropriate to the vessel and, when berthing and leaving or lying at a quay, pontoon, or against other vessels, the Master shall cause the vessel to be fended off from that quay or those other vessels so as to prevent damage to that quay, pontoons, those other vessels or any other property.

### 13 Access Across Decks

The Master of a vessel alongside a quay, pontoon, or alongside any vessel already berthed within the Harbour shall, if required to do so by the Harbour Master or other authorised officer, give free access across the deck of his vessel for persons and goods to and from vessels berthed alongside his decks.

### 14 Unmooring of Vessels

No person except the Harbour Master or a person acting on behalf of the Harbour Master in pursuance of his duties shall for any purpose whatsoever unmoor or cast off or loose any mooring of any vessel moored within the Harbour without the previous permission of the owner or lawful Master of such a vessel.

### 15 Vessels not to make fast to Unauthorised Objects

The Master of a vessel shall not knowingly cause or permit any person to secure the vessel to any post, quay, ring, tide board, steps, vertical ladder, fender or any other thing or place not assigned for that purpose.

### 16 Fishing within Harbour Limits

- 16.1 No person shall fish or use any fishing apparatus anywhere within the Inner Harbour.

- 16.2 The Master of a vessel shall ensure that no fishing apparatus is placed in or near the Victoria Channel in a manner that could pose a risk of being fouled by any vessel using the Victoria Channel or waters contiguous to it. If the owner of fishing apparatus shall not comply with any direction of the Harbour Master given to remove the apparatus, the Harbour Master may, on giving where reasonably practicable notice, remove such apparatus.

### 17 Registration & Insurance of Leisure Craft Vessels

- 17.1 Every vessel must have their name or ID letters conspicuously marked on it.
- 17.2 Every vessel wishing to navigate within the Inner Harbour or use the Leisure Craft Facilities must have appropriate third party marine insurance to cover a minimum of £2 million.

### 18 Non Displacement Craft

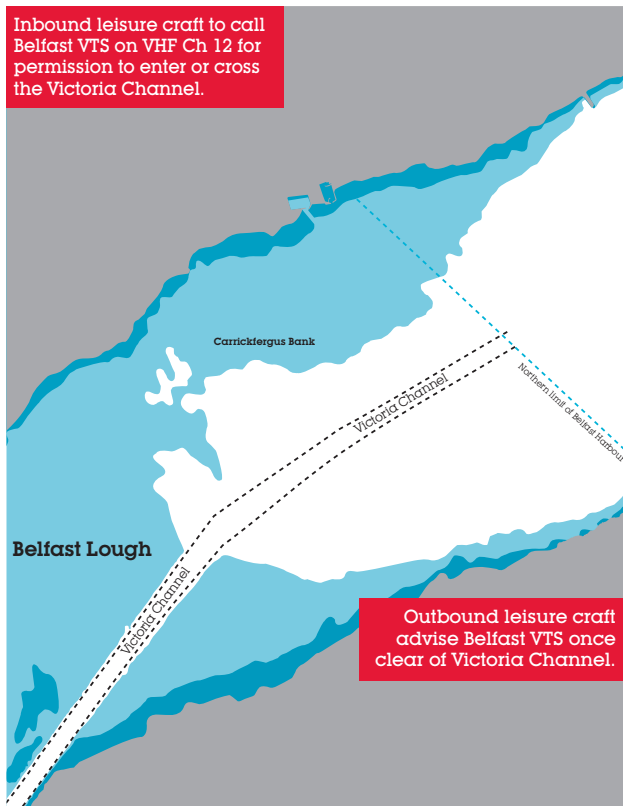
Hovercraft, WIG craft and Seaplanes are not permitted within Harbour Limits without prior permission from the Harbour Master.

### 19 Pontoon Access

- 19.1 The Pontoon should be kept clear of obstructions at all times to maintain a safe means of access.

# Belfast Harbour

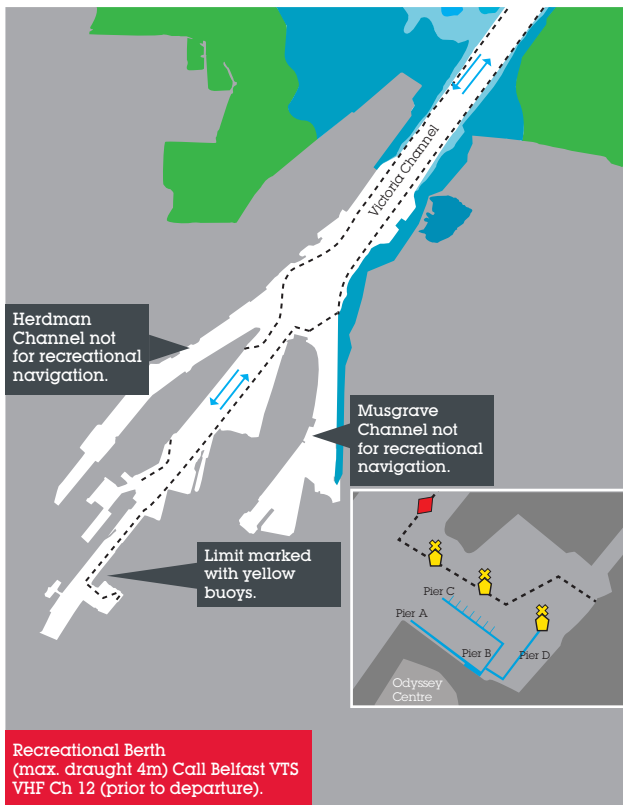
Tide Tables 2022



For guidance only – do not use for navigation



## Guidance for recreational users



For guidance only – do not use for navigation

# Emergency Contact Numbers for recreational users

---

**Coastguard**

VHF Channel 16  
Tel +44 (0)28 9146 3933  
or 999

**Belfast VTS**

VHF Channel 12

**Belfast Harbour Office**

Tel +44 (0)28 9055 4422

**Port Operations**

Tel +44 (0)28 9055 3014

**Belfast Harbour Police**

Tel +44 (0)28 9055 3000

**Northern Ireland  
Fire & Rescue Service**

Tel +44 (0)28 9266 4221  
or 999

**Northern Ireland  
Ambulance Service**

Tel 999

Attention is drawn to the Notices to Mariners on Belfast Harbour's website [www.belfast-harbour.co.uk](http://www.belfast-harbour.co.uk); in particular to Notice to Mariners No.1 of 2022.

## Constants

---

Port	H	M
Ardglass	+0	23
Ayr	+0	56
Ballycastle	-3	20
Bangor	+0	10
Bunrana, Lough Swilly	-5	6
Carlingford Bar	+0	24
Campbeltown	+0	44
Coleraine	-4	3
Corran Narrows	-5	17
Crinan	+5	48
Donaghadee	+0	20
Douglas, IoM	+0	7
Dublin	+0	39
East Tarbert (Lough Fyne)	+0	55
Galway	-6	00
Gigha Sound	+3	31
Heysham	+0	11
Killyleagh, Co. Down	+2	2

Port	H	M
Kyleakin	-4	28
Lamlash	+0	50
Larne	+0	4
Londonderry	-2	53
Mull of Kintyre	-0	24
Newcastle, Dundrum Bay	+0	30
Oban	-5	24
Point of Ayre	+0	3
Portavogie	+0	15
Port Ellen (Islay)	-6	0
Port Patrick	+0	10
Portree	-4	38
Portrush	-4	33
Red Bay	+0	6
Strangford Bar	+0	16
Strangford Quay	+1	52
Tobermory	-5	14
Warrenpoint, Co. Down	+0	30

# Times & Heights of High & Low Waters

---

All times are in (GMT)  
Greenwich Mean Time.

Daylight saving time will begin at 0100 hrs on Sunday 27th March and end at 0200hrs on Sunday 30th October. Between these dates one hour should be added to GMT times.

Heights refer to Harbour Datum which is also Admiralty Chart Datum.

Tidal predictions for Belfast have been computed by The United Kingdom Hydrographic Office (copyright reserved).

Phases of the Moon are reproduced, with permission, from data supplied by The United Kingdom Hydrographic Office.



## Follow these steps carefully

---

- The International Regulations for the Prevention of Collision at Sea Rules apply throughout the Lough. Know them and follow them.
- Give early notice of your intentions as ferries approach very quickly.
- Check the ferry times in your area.
- Watch out for the ferry wash, especially when launching or retrieving boats.

For information on winter and summer berthing, please call **028 9055 3282** or e-mail **[m.office@belfast-harbour.co.uk](mailto:m.office@belfast-harbour.co.uk)**

Further details are also available on the Belfast Harbour website: **[belfast-harbour.co.uk/port/marina](http://belfast-harbour.co.uk/port/marina)**

# Belfast Harbour

Tide Tables 2022

## Levels of Tides

---

### Above Harbour Datum

	Feet	Meters
Mean High Water, Spring Tides	11.4	3.5
Mean High Water, Neap Tides	9.7	2.9
Mean Low Water, Spring Tides	1.4	0.4
Mean Low Water, Neap Tides	3.5	1.1

### Highest Spring Tide on record

5th January 1991	16.07	4.9
------------------	-------	-----

### Average range of tide

(At Spring Tides)	10.0	3.1
(At Neap Tides)	6.2	1.9

The Tidal current runs at the rate of .33 knot on Spring Tides, and .25 knot on Neap Tides.

### Harbour & ordnance datum

Harbour Datum Level of No.2 Clarendon Dry Dock Sill, which is also Admiralty Chart Datum.

### Ordnance datum (1958)

6.61 feet (2.0 metres) above Harbour datum.



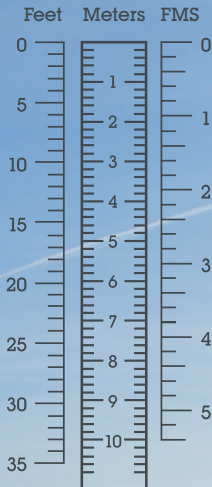
# Conversion Table

---

Care has been taken in compiling the information given, but Belfast Harbour cannot be responsible for any inaccuracy, mis-statement or omission.

Moon symbols used:

-  New
-  Full





## January 2022

	Time	Metres	Time	Metres	
1st Saturday	0306 0929 1543 2155	0.6 3.4 0.7 3.6	8th Saturday	0313 0855 1521 2144	3.2 0.9 3.6 0.6
2nd Sunday	0357 1021 1634 2249	0.6 3.6 0.5 3.6	9th Sunday	0404 0947 1612 2242	3.1 1.0 3.4 0.7
3rd Monday	0446 1112 1724 2342	0.6 3.7 0.4 3.6	10th Monday	0457 1045 1706 2343	3.0 1.1 3.3 0.9
4th Tuesday	0535 1203 1815	0.6 3.7 0.4	11th Tuesday	0554 1151 1807	2.9 1.2 3.1
5th Wednesday	0035 0624 1254 1905	3.5 0.7 3.8 0.4	12th Wednesday	0043 0655 1258 1918	1.0 2.9 1.2 3.0
6th Thursday	0129 0714 1343 1957	3.4 0.8 3.7 0.4	13th Thursday	0141 0757 1400 2025	1.0 3.0 1.2 3.0
7th Friday	0221 0805 1432 2049	3.3 0.8 3.7 0.5	14th Friday	0232 0852 1455 2120	1.0 3.1 1.1 3.1
			15th Saturday	0317 0939 1541 2206	0.9 3.3 1.0 3.1

## Tide Tables 2022

	Time	Metres		Time	Metres
<b>16th</b> Sunday	0357 1021 1620 2246	0.9 3.4 0.8 3.2	<b>24th</b> Monday	0254 0902 1516 2128	3.1 0.8 3.5 0.6
<b>17th</b> Monday	0434 1100 1657 2323	0.9 3.5 0.8 3.2	<b>25th</b> Tuesday	0344 0951 1608 2222	3.0 0.9 3.4 0.7
<b>18th</b> Tuesday	0511 1136 1733 2356	0.8 3.5 0.7 3.1	<b>26th</b> Wednesday	0441 1049 1709 2325	3.0 1.0 3.3 0.8
<b>19th</b> Wednesday	0547 1208 1809	0.8 3.5 0.6	<b>27th</b> Thursday	0547 1203 1821	2.9 1.1 3.2
<b>20th</b> Thursday	0022 0624 1236 1844	3.1 0.8 3.5 0.6	<b>28th</b> Friday	0041 0701 1329 1937	0.9 3.0 1.0 3.2
<b>21st</b> Friday	0049 0701 1309 1922	3.1 0.8 3.5 0.5	<b>29th</b> Saturday	0156 0814 1440 2048	0.8 3.1 0.8 3.3
<b>22nd</b> Saturday	0126 0739 1347 2000	3.1 0.8 3.5 0.5	<b>30th</b> Sunday	0258 0919 1539 2150	0.8 3.3 0.6 3.3
<b>23rd</b> Sunday	0208 0819 1430 2042	3.1 0.8 3.5 0.5	<b>31st</b> Monday	0352 1015 1632 2244	0.7 3.5 0.4 3.4



## February 2022

	Time	Metres	Time	Metres	
1st Tuesday	0442 1105 1721 2334	0.6 3.6 0.3 3.4	8th Tuesday	0406 0948 1621 2241	3.0 0.9 3.2 0.9
2nd Wednesday	0529 1153 1808	0.6 3.7 0.2	9th Wednesday	0455 1045 1714 2353	2.9 1.1 3.0 1.1
3rd Thursday	0022 0613 1239 1852	3.4 0.6 3.7 0.2	10th Thursday	0549 1210 1816	2.9 1.2 2.8
4th Friday	0110 0656 1324 1935	3.3 0.6 3.7 0.3	11th Friday	0100 0654 1324 1941	1.1 2.9 1.2 2.8
5th Saturday	0155 0738 1408 2017	3.2 0.7 3.6 0.4	12th Saturday	0159 0814 1426 2101	1.1 2.9 1.1 2.8
6th Sunday	0239 0819 1451 2059	3.1 0.7 3.5 0.5	13th Sunday	0251 0916 1517 2151	1.0 3.1 0.9 3.0
7th Monday	0322 0901 1534 2145	3.1 0.8 3.4 0.7	14th Monday	0336 1002 1559 2232	0.9 3.3 0.7 3.0
			15th Tuesday	0415 1041 1637 2308	0.8 3.4 0.6 3.1

## Tide Tables 2022

	Time	Metres		Time	Metres
<b>16th</b> Wednesday $\circ$	0451	0.7	<b>24th</b> Thursday	0405	3.0
	1116	3.4		1018	0.9
	1712	0.5		1646	3.2
	2339	3.1		2252	0.9
<b>17th</b> Thursday	0527	0.6	<b>25th</b> Friday	0514	2.9
	1144	3.5		1139	1.0
	1747	0.4		1802	3.0
<b>18th</b> Friday	0000	3.1	<b>26th</b> Saturday	0021	1.0
	0602	0.6		0636	2.8
	1209	3.5		1323	0.9
	1821	0.4		1928	3.0
<b>19th</b> Saturday	0023	3.1	<b>27th</b> Sunday	0149	1.0
	0638	0.6		0806	3.0
	1241	3.5		1435	0.7
	1857	0.3		2048	3.1
<b>20th</b> Sunday	0058	3.1	<b>28th</b> Monday	0254	0.8
	0713	0.5		0915	3.2
	1321	3.6		1534	0.5
	1933	0.3		2147	3.2
<b>21st</b> Monday	0139	3.2			
	0751	0.5			
	1404	3.6			
	2013	0.4			
<b>22nd</b> Tuesday	0223	3.2			
	0832	0.6			
	1451	3.5			
	2058	0.5			
<b>23rd</b> Wednesday $\alpha$	0310	3.1			
	0920	0.7			
	1543	3.3			
	2149	0.7			



## March 2022

	Time	Metres		Time	Metres
1st Tuesday	0348	0.7	8th Tuesday	0242	3.1
	1008	3.4		0821	0.6
	1625	0.3		1459	3.3
	2237	3.3		2052	0.7
2nd Wednesday	0435	0.6	9th Wednesday	0324	3.1
	1054	3.5		0903	0.8
	1711	0.2		1543	3.1
	2322	3.3		2136	0.9
3rd Thursday	0518	0.5	10th Thursday	0410	3.0
	1137	3.6		0953	1.0
	1752	0.2		1633	2.9
				2237	1.2
4th Friday	0004	3.3	11th Friday	0503	2.9
	0556	0.5		1106	1.1
	1219	3.6		1732	2.7
	1830	0.2			
5th Saturday	0045	3.2	12th Saturday	0017	1.3
	0632	0.5		0603	2.8
	1300	3.6		1248	1.2
	1905	0.3		1844	2.6
6th Sunday	0124	3.2	13th Sunday	0125	1.2
	0707	0.5		0717	2.8
	1339	3.5		1354	1.0
	1939	0.4		2038	2.7
7th Monday	0203	3.2	14th Monday	0222	1.1
	0743	0.6		0843	2.9
	1419	3.4		1448	0.8
	2014	0.6		2130	2.8
			15th Tuesday	0310	0.9
				0933	3.1
				1532	0.6
				2208	3.0



## Tide Tables 2022

	Time	Metres		Time	Metres
<b>16th</b> Wednesday	0351 1011 1610 2241	0.7 3.2 0.5 3.1	<b>24th</b> Thursday	0246 0859 1529 2127	3.2 0.6 3.2 0.8
<b>17th</b> Thursday	0428 1043 1645 2308	0.6 3.3 0.3 3.1	<b>25th</b> Friday	0343 1003 1637 2235	3.0 0.8 3.0 1.0
<b>18th</b> Friday	0503 1109 1719 2328	0.5 3.4 0.3 3.1	<b>26th</b> Saturday	0455 1141 1758	2.9 0.9 2.9
<b>19th</b> Saturday	0537 1138 1753 2354	0.5 3.5 0.2 3.2	<b>27th</b> Sunday <small>British Summer Time Commences</small>	0014 0626 1317 1930	1.1 2.8 0.8 2.9
<b>20th</b> Sunday	0611 1214 1829	0.4 3.6 0.2	<b>28th</b> Monday	0141 0759 1428 2042	1.1 3.0 0.6 3.0
<b>21st</b> Monday	0030 0646 1256 1906	3.3 0.4 3.6 0.2	<b>29th</b> Tuesday	0246 0902 1525 2136	0.9 3.2 0.4 3.1
<b>22nd</b> Tuesday	0112 0725 1342 1947	3.3 0.4 3.5 0.3	<b>30th</b> Wednesday	0339 0952 1613 2221	0.7 3.4 0.2 3.2
<b>23rd</b> Wednesday	0157 0809 1432 2033	3.3 0.5 3.4 0.5	<b>31st</b> Thursday	0423 1036 1654 2302	0.6 3.5 0.2 3.2



## April 2022

	Time	Metres	Time	Metres	
1st Friday ●	0501 1117 1730 2341	0.5 3.5 0.2 3.2	8th Friday	0332 0917 1559 2148	3.1 0.9 2.8 1.2
2nd Saturday	0535 1156 1802	0.5 3.5 0.3	9th Saturday ☽	0423 1020 1657 2317	3.0 1.0 2.7 1.3
3rd Sunday	0017 0606 1233 1833	3.2 0.5 3.4 0.4	10th Sunday	0521 1205 1805	2.8 1.1 2.6
4th Monday	0052 0638 1309 1904	3.2 0.5 3.4 0.6	11th Monday	0046 0628 1318 1936	1.3 2.8 1.0 2.6
5th Tuesday	0128 0712 1346 1937	3.3 0.5 3.3 0.7	12th Tuesday	0148 0742 1413 2049	1.2 2.9 0.8 2.8
6th Wednesday	0206 0749 1426 2014	3.3 0.6 3.2 0.8	13th Wednesday	0239 0845 1459 2128	1.0 3.0 0.6 3.0
7th Thursday	0247 0830 1509 2056	3.2 0.7 3.0 1.0	14th Thursday	0321 0927 1537 2200	0.8 3.2 0.4 3.1
			15th Friday	0359 1002 1613 2228	0.6 3.4 0.3 3.2

## Tide Tables 2022




	Time	Metres		Time	Metres
<b>16th</b> Saturday ○	0433	0.5	<b>24th</b> Sunday	0449	3.0
	1035	3.5		1140	0.8
	1647	0.2		1759	2.9
	2256	3.3			
<b>17th</b> Sunday	0508	0.4	<b>25th</b> Monday	0001	1.2
	1110	3.6		0617	3.0
	1722	0.2		1304	0.6
	2329	3.3		1920	2.9
<b>18th</b> Monday	0544	0.4	<b>26th</b> Tuesday	0122	1.1
	1151	3.6		0739	3.1
	1801	0.2		1411	0.5
				2023	3.0
<b>19th</b> Tuesday	0008	3.4	<b>27th</b> Wednesday	0228	0.9
	0623	0.3		0839	3.2
	1237	3.6		1506	0.3
	1842	0.3		2113	3.1
<b>20th</b> Wednesday	0053	3.4	<b>28th</b> Thursday	0320	0.8
	0707	0.3		0929	3.4
	1328	3.5		1551	0.3
	1928	0.5		2157	3.2
<b>21st</b> Thursday	0141	3.4	<b>29th</b> Friday	0403	0.7
	0755	0.4		1013	3.4
	1424	3.4		1629	0.3
	2018	0.7		2237	3.2
<b>22nd</b> Friday	0235	3.3	<b>30th</b> Saturday ●	0439	0.6
	0852	0.6		1053	3.4
	1527	3.2		1702	0.4
	2117	0.9		2315	3.3
<b>23rd</b> Saturday ☾	0336	3.2			
	1004	0.7			
	1638	3.0			
	2231	1.1			



## May 2022

	Time	Metres		Time	Metres
1st Sunday	0512	0.6	8th Sunday	0346	3.1
	1131	3.4		0948	0.9
	1733	0.5		1626	2.7
	2349	3.3		2224	1.3
2nd Monday	0544	0.6	9th Monday	0441	3.0
	1205	3.3		1103	1.0
	1804	0.6		1730	2.7
				2349	1.3
3rd Tuesday	0022	3.3	10th Tuesday	0544	2.9
	0615	0.6		1228	0.9
	1240	3.2		1838	2.7
	1835	0.7			
4th Wednesday	0057	3.4	11th Wednesday	0100	1.2
	0649	0.6		0649	2.9
	1316	3.2		1329	0.8
	1909	0.8		1943	2.8
5th Thursday	0135	3.4	12th Thursday	0156	1.0
	0725	0.6		0750	3.1
	1356	3.1		1417	0.6
	1946	0.9		2034	3.0
6th Friday	0216	3.3	13th Friday	0242	0.9
	0805	0.7		0841	3.2
	1440	3.0		1458	0.4
	2028	1.0		2114	3.1
7th Saturday	0259	3.3	14th Saturday	0323	0.7
	0851	0.8		0924	3.4
	1529	2.9		1536	0.3
	2119	1.1		2151	3.3
			15th Sunday	0402	0.6
				1006	3.5
				1615	0.3
				2228	3.4

## Tide Tables 2022

	Time	Metres		Time	Metres
<b>16th</b> Monday 	0441	0.4	<b>24th</b> Tuesday	0556	3.2
	1049	3.6		1236	0.6
	1655	0.3		1854	2.9
	2309	3.5			
<b>17th</b> Tuesday	0522	0.4	<b>25th</b> Wednesday	0046	1.1
	1135	3.6		0708	3.2
	1738	0.3		1341	0.5
	2354	3.5		1953	3.0
<b>18th</b> Wednesday	0607	0.3	<b>26th</b> Thursday	0153	1.0
	1226	3.6		0810	3.2
	1825	0.5		1435	0.5
				2044	3.1
<b>19th</b> Thursday	0043	3.5	<b>27th</b> Friday	0249	0.9
	0656	0.4		0902	3.3
	1322	3.4		1521	0.5
	1915	0.6		2129	3.2
<b>20th</b> Friday	0137	3.5	<b>28th</b> Saturday	0335	0.8
	0750	0.4		0948	3.3
	1423	3.3		1559	0.5
	2011	0.8		2210	3.2
<b>21st</b> Saturday	0233	3.4	<b>29th</b> Sunday	0415	0.7
	0852	0.5		1029	3.3
	1526	3.2		1633	0.6
	2113	0.9		2248	3.3
<b>22nd</b> Sunday 	0333	3.3	<b>30th</b> Monday 	0450	0.7
	1004	0.6		1107	3.3
	1634	3.0		1706	0.7
	2222	1.0		2323	3.3
<b>23rd</b> Monday	0440	3.2	<b>31st</b> Tuesday	0524	0.7
	1122	0.6		1141	3.2
	1746	2.9		1740	0.8
	2335	1.1		2356	3.4



## June 2022

Time Metres

	Time	Metres		Time	Metres
1st Wednesday	0558 1214 1814	0.7 3.2 0.8	8th Wednesday	0455 1119 1751 2351	3.1 0.8 2.8 1.2
2nd Thursday	0032 0632 1250 1848	3.4 0.7 3.1 0.9	9th Thursday	0558 1225 1851	3.1 0.7 2.9
3rd Friday	0111 0708 1330 1926	3.5 0.7 3.1 0.9	10th Friday	0056 0701 1325 1944	1.1 3.1 0.6 3.0
4th Saturday	0150 0747 1412 2009	3.4 0.7 3.0 1.0	11th Saturday	0155 0759 1416 2033	0.9 3.3 0.5 3.2
5th Sunday	0230 0830 1459 2056	3.4 0.7 2.9 1.0	12th Sunday	0247 0852 1503 2119	0.8 3.4 0.4 3.3
6th Monday	0312 0920 1552 2149	3.3 0.8 2.8 1.1	13th Monday	0335 0943 1548 2206	0.6 3.5 0.4 3.4
7th Tuesday	0400 1016 1650 2248	3.2 0.8 2.8 1.2	14th Tuesday	0422 1032 1634 2254	0.5 3.6 0.4 3.5
			15th Wednesday	0509 1124 1722 2344	0.4 3.6 0.5 3.6



## Tide Tables 2022

	Time	Metres		Time	Metres
<b>16th</b> Thursday	0559	0.3	<b>24th</b> Friday	0110	1.0
	1218	3.5		0734	3.2
	1813	0.6		1356	0.7
				2010	3.0
<b>17th</b> Friday	0037	3.6	<b>25th</b> Saturday	0211	1.0
	0650	0.3		0832	3.2
	1315	3.4		1445	0.7
	1906	0.7		2058	3.1
<b>18th</b> Saturday	0131	3.6	<b>26th</b> Sunday	0305	0.9
	0746	0.3		0923	3.2
	1414	3.3		1528	0.7
	2002	0.8		2143	3.2
<b>19th</b> Sunday	0225	3.6	<b>27th</b> Monday	0351	0.8
	0845	0.4		1008	3.2
	1514	3.2		1607	0.8
	2100	0.9		2224	3.3
<b>20th</b> Monday	0320	3.5	<b>28th</b> Tuesday	0431	0.8
	0948	0.4		1048	3.2
	1614	3.1		1643	0.8
	2200	0.9		2302	3.4
<b>21st</b> Tuesday ☾	0418	3.4	<b>29th</b> Wednesday ●	0507	0.8
	1053	0.5		1124	3.1
	1716	3.0		1718	0.8
	2302	1.0		2337	3.4
<b>22nd</b> Wednesday	0520	3.3	<b>30th</b> Thursday	0542	0.7
	1158	0.6		1158	3.1
	1818	3.0		1754	0.9
<b>23rd</b> Thursday	0005	1.0			
	0628	3.2			
	1300	0.6			
	1916	3.0			



## July 2022

Time Metres

	Time	Metres		Time	Metres
1st Friday	0013 0616 1231 1830	3.5 0.7 3.1 0.9	8th Friday	0509 1129 1757	3.2 0.7 2.9
2nd Saturday	0048 0651 1305 1908	3.5 0.7 3.0 0.9	9th Saturday	0001 0615 1235 1858	1.1 3.2 0.7 3.0
3rd Sunday	0123 0728 1342 1948	3.5 0.6 3.0 0.9	10th Sunday	0112 0723 1341 1958	1.0 3.2 0.7 3.1
4th Monday	0159 0807 1423 2030	3.4 0.6 3.0 0.9	11th Monday	0221 0827 1440 2055	0.9 3.3 0.6 3.3
5th Tuesday	0238 0850 1509 2115	3.4 0.6 2.9 0.9	12th Tuesday	0320 0926 1532 2149	0.7 3.4 0.6 3.4
6th Wednesday	0322 0937 1600 2204	3.3 0.6 2.9 1.0	13th Wednesday	0413 1022 1623 2242	0.5 3.5 0.6 3.5
7th Thursday	0412 1030 1657 2258	3.2 0.7 2.9 1.0	14th Thursday	0504 1115 1713 2334	0.4 3.5 0.6 3.6
			15th Friday	0554 1208 1803	0.3 3.4 0.6

## Tide Tables 2022

	Time	Metres		Time	Metres
<b>16th</b> Saturday	0026	3.7	<b>24th</b> Sunday	0136	1.1
	0644	0.2		0801	2.9
	1302	3.4		1412	1.0
	1853	0.7		2026	3.1
<b>17th</b> Sunday	0117	3.7	<b>25th</b> Monday	0236	1.0
	0734	0.2		0902	3.0
	1356	3.3		1500	0.9
	1945	0.7		2118	3.2
<b>18th</b> Monday	0207	3.7	<b>26th</b> Tuesday	0329	0.9
	0826	0.3		0952	3.0
	1449	3.2		1543	0.9
	2035	0.8		2203	3.3
<b>19th</b> Tuesday	0257	3.6	<b>27th</b> Wednesday	0412	0.8
	0918	0.4		1034	3.1
	1541	3.1		1621	0.9
	2127	0.8		2243	3.4
<b>20th</b> Wednesday	0346	3.5	<b>28th</b> Thursday	0448	0.7
	1015	0.5		1111	3.1
	1633	3.0		1657	0.8
	2221	0.9		2320	3.4
<b>21st</b> Thursday	0438	3.3	<b>29th</b> Friday	0522	0.7
	1115	0.7		1145	3.1
	1727	3.0		1733	0.8
	2323	1.0		2353	3.5
<b>22nd</b> Friday	0536	3.1	<b>30th</b> Saturday	0555	0.6
	1217	0.8		1214	3.1
	1824	2.9		1809	0.8
<b>23rd</b> Saturday	0030	1.1	<b>31st</b> Sunday	0022	3.5
	0645	3.0		0629	0.6
	1317	0.9		1237	3.0
	1926	3.0		1845	0.8



## August 2022

	Time	Metres		Time	Metres
1st Monday	0051 0703 1308 1921	3.5 0.5 3.1 0.8	8th Monday	0045 0658 1319 1932	1.1 3.1 0.9 3.0
2nd Tuesday	0126 0739 1346 1959	3.5 0.5 3.1 0.8	9th Tuesday	0210 0813 1429 2040	0.9 3.1 0.8 3.2
3rd Wednesday	0206 0817 1429 2039	3.5 0.5 3.1 0.8	10th Wednesday	0314 0919 1526 2140	0.7 3.3 0.7 3.4
4th Thursday	0249 0859 1517 2124	3.4 0.5 3.1 0.9	11th Thursday	0408 1016 1617 2233	0.4 3.4 0.7 3.6
5th Friday	0337 0948 1610 2216	3.4 0.6 3.0 1.0	12th Friday	0458 1106 1704 2322	0.3 3.4 0.6 3.7
6th Saturday	0433 1045 1711 2319	3.2 0.8 3.0 1.0	13th Saturday	0545 1155 1750	0.2 3.4 0.6
7th Sunday	0541 1154 1821	3.1 0.9 3.0	14th Sunday	0010 0629 1243 1834	3.7 0.2 3.3 0.6
			15th Monday	0057 0712 1330 1917	3.7 0.2 3.3 0.6

## Tide Tables 2022

	Time	Metres		Time	Metres
<b>16th</b> Tuesday	0142	3.7	<b>24th</b> Wednesday	0304	0.9
	0755	0.3		0937	2.9
	1416	3.2		1519	1.0
	2000	0.7		2142	3.3
<b>17th</b> Wednesday	0227	3.6	<b>25th</b> Thursday	0348	0.8
	0837	0.5		1017	3.0
	1502	3.2		1559	0.9
	2044	0.8		2222	3.4
<b>18th</b> Thursday	0312	3.4	<b>26th</b> Friday	0424	0.7
	0922	0.7		1053	3.1
	1547	3.1		1634	0.8
	2131	0.9		2257	3.4
<b>19th</b> Friday	0358	3.3	<b>27th</b> Saturday	0457	0.6
	1016	0.9		1124	3.1
	1634	3.0		1709	0.8
	2228	1.1		2326	3.5
<b>20th</b> Saturday	0449	3.0	<b>28th</b> Sunday	0529	0.5
	1128	1.1		1148	3.1
	1727	3.0		1743	0.7
	2348	1.2		2348	3.5
<b>21st</b> Sunday	0549	2.8	<b>29th</b> Monday	0602	0.5
	1237	1.2		1204	3.1
	1828	2.9		1817	0.7
<b>22nd</b> Monday	0103	1.2	<b>30th</b> Tuesday	0017	3.5
	0717	2.7		0634	0.4
	1339	1.2		1234	3.2
	1945	3.0		1850	0.7
<b>23rd</b> Tuesday	0208	1.1	<b>31st</b> Wednesday	0054	3.5
	0846	2.8		0707	0.4
	1433	1.1		1312	3.2
	2053	3.1		1926	0.7



## September 2022

Time Metres

	Time	Metres		Time	Metres
8th Thursday	0308	0.6		0918	3.2
	1520	0.8		2134	3.4
1st Thursday	0135	3.6	9th Friday	0400	0.4
	0744	0.4		1009	3.3
	1355	3.2		1608	0.7
	2006	0.7		2222	3.6
2nd Friday	0220	3.5	10th Saturday	0446	0.2
	0826	0.5		1054	3.4
	1440	3.2		1651	0.6
	2050	0.8		2307	3.7
3rd Saturday	0309	3.4	11th Sunday	0528	0.2
	0914	0.7		1137	3.4
	1533	3.1		1731	0.6
	2144	0.9		2350	3.7
4th Sunday	0408	3.2	12th Monday	0607	0.2
	1011	0.9		1218	3.4
	1638	3.0		1808	0.6
	2252	1.1			
5th Monday	0522	3.0	13th Tuesday	0032	3.7
	1126	1.1		0642	0.3
	1756	3.0		1300	3.3
				1845	0.7
6th Tuesday	0043	1.1	14th Wednesday	0115	3.6
	0646	2.9		0717	0.5
	1312	1.2		1341	3.3
	1918	3.0		1923	0.7
7th Wednesday	0206	0.9	15th Thursday	0156	3.5
	0811	3.0		0753	0.6
	1424	1.0		1422	3.3
	2035	3.2		2003	0.8

## Tide Tables 2022

	Time	Metres		Time	Metres
<b>16th</b> Friday	0238	3.4	<b>24th</b> Saturday	0354	0.6
	0831	0.8		1025	3.1
	1505	3.2		1608	0.8
	2047	0.9		2224	3.5
<b>17th</b> Saturday ☾	0322	3.2	<b>25th</b> Sunday ●	0427	0.5
	0915	1.1		1053	3.2
	1551	3.2		1641	0.7
	2137	1.1		2250	3.5
<b>18th</b> Sunday	0411	3.0	<b>26th</b> Monday	0459	0.5
	1013	1.3		1113	3.3
	1643	3.1		1714	0.7
	2252	1.2		2314	3.6
<b>19th</b> Monday	0509	2.8	<b>27th</b> Tuesday	0530	0.4
	1153	1.4		1132	3.3
	1741	3.0		1747	0.7
				2347	3.6
<b>20th</b> Tuesday	0027	1.3	<b>28th</b> Wednesday	0603	0.4
	0620	2.6		1204	3.4
	1304	1.4		1821	0.6
	1852	3.0			
<b>21st</b> Wednesday	0135	1.2	<b>29th</b> Thursday	0026	3.6
	0823	2.7		0637	0.4
	1402	1.3		1243	3.4
	2018	3.1		1858	0.6
<b>22nd</b> Thursday	0232	1.0	<b>30th</b> Friday	0110	3.6
	0914	2.9		0717	0.5
	1452	1.1		1326	3.4
	2112	3.2		1939	0.7
<b>23rd</b> Friday	0317	0.8			
	0952	3.0			
	1532	0.9			
	2151	3.4			



## October 2022

	Time	Metres	Time	Metres	
1st Saturday	0158 0800 1414 2028	3.5 0.7 3.3 0.8	8th Saturday	0345 0953 1554 2206	0.4 3.4 0.8 3.7
2nd Sunday	0253 0850 1510 2126	3.3 0.9 3.2 1.0	9th Sunday	0428 1035 1633 2248	0.3 3.4 0.7 3.7
3rd Monday	0359 0952 1620 2248	3.1 1.2 3.1 1.1	10th Monday	0505 1115 1709 2328	0.3 3.5 0.7 3.7
4th Tuesday	0517 1119 1743	3.0 1.3 3.0	11th Tuesday	0538 1153 1743	0.4 3.4 0.7
5th Wednesday	0041 0647 1305 1914	1.0 2.9 1.3 3.1	12th Wednesday	0008 0610 1230 1817	3.6 0.6 3.4 0.7
6th Thursday	0157 0809 1414 2026	0.8 3.1 1.1 3.3	13th Thursday	0046 0642 1307 1853	3.5 0.7 3.4 0.8
7th Friday	0256 0907 1509 2120	0.6 3.2 0.9 3.5	14th Friday	0125 0717 1346 1931	3.4 0.8 3.4 0.8
			15th Saturday	0205 0754 1428 2013	3.3 1.0 3.4 0.9



## Tide Tables 2022

	Time	Metres		Time	Metres
<b>16th</b> Sunday	0249	3.2	<b>24th</b> Monday	0352	0.5
	0835	1.2		1014	3.3
	1514	3.3		1611	0.8
	2102	1.1		2216	3.6
<b>17th</b> Monday ☾	0339	3.0	<b>25th</b> Tuesday ●	0425	0.5
	0926	1.4		1039	3.4
	1605	3.2		1644	0.7
	2204	1.2		2247	3.7
<b>18th</b> Tuesday	0435	2.8	<b>26th</b> Wednesday	0458	0.5
	1048	1.5		1106	3.5
	1702	3.1		1719	0.6
	2342	1.3		2324	3.7
<b>19th</b> Wednesday	0542	2.7	<b>27th</b> Thursday	0534	0.5
	1222	1.5		1141	3.5
	1807	3.0		1757	0.6
<b>20th</b> Thursday	0055	1.2	<b>28th</b> Friday	0007	3.7
	0718	2.7		0613	0.6
	1325	1.4		1223	3.6
	1920	3.1		1838	0.6
<b>21st</b> Friday	0153	1.0	<b>29th</b> Saturday	0055	3.6
	0834	2.9		0657	0.7
	1417	1.2		1309	3.5
	2024	3.2		1925	0.7
<b>22nd</b> Saturday	0240	0.8	<b>30th</b> Sunday <small>British Summer Time Ends</small>	0149	3.5
	0913	3.1		0745	0.9
	1500	1.0		1402	3.5
	2109	3.4		2019	0.8
<b>23rd</b> Sunday	0318	0.7	<b>31st</b> Monday	0251	3.3
	0945	3.2		0840	1.1
	1537	0.9		1503	3.4
	2144	3.5		2126	0.9



## November 2022

	Time	Metres	Time	Metres	
<b>1st</b> Tuesday	0400 0949 1613 2254	3.1 1.3 3.2 1.0	<b>8th</b> Tuesday	0438 1051 1647 2308	0.6 3.5 0.8 3.6
<b>2nd</b> Wednesday	0519 1114 1736	3.0 1.4 3.2	<b>9th</b> Wednesday	0511 1128 1722 2345	0.7 3.5 0.8 3.5
<b>3rd</b> Thursday	0026 0641 1243 1859	0.9 3.0 1.3 3.2	<b>10th</b> Thursday	0543 1203 1757	0.8 3.5 0.8
<b>4th</b> Friday	0137 0750 1353 2006	0.7 3.1 1.2 3.4	<b>11th</b> Friday	0021 0616 1239 1832	3.4 0.9 3.6 0.8
<b>5th</b> Saturday	0235 0845 1448 2059	0.6 3.3 1.0 3.5	<b>12th</b> Saturday	0058 0650 1317 1909	3.3 1.0 3.6 0.9
<b>6th</b> Sunday	0323 0931 1533 2145	0.5 3.4 0.9 3.6	<b>13th</b> Sunday	0138 0727 1359 1950	3.3 1.1 3.5 0.9
<b>7th</b> Monday	0403 1012 1612 2228	0.5 3.5 0.8 3.6	<b>14th</b> Monday	0222 0809 1443 2036	3.1 1.2 3.5 1.0
			<b>15th</b> Tuesday	0310 0858 1530 2130	3.0 1.3 3.3 1.1

## Tide Tables 2022

	Time	Metres		Time	Metres
16th Wednesday ☾	0405	2.9	24th Thursday	0431	0.5
	0959	1.4		1047	3.6
	1624	3.2		1659	0.6
	2238	1.2		2310	3.7
17th Thursday	0507	2.8	25th Friday	0513	0.6
	1116	1.5		1128	3.6
	1724	3.1		1742	0.6
	2357	1.2		2358	3.7
18th Friday	0616	2.8	26th Saturday	0557	0.7
	1232	1.4		1214	3.7
	1828	3.1		1829	0.6
19th Saturday	0102	1.0	27th Sunday	0051	3.6
	0723	2.9		0645	0.8
	1331	1.3		1306	3.6
	1930	3.2		1921	0.6
20th Sunday	0153	0.9	28th Monday	0150	3.4
	0818	3.1		0738	0.9
	1419	1.1		1401	3.6
	2022	3.3		2019	0.7
21st Monday	0236	0.7	29th Tuesday	0252	3.3
	0900	3.2		0837	1.1
	1501	1.0		1501	3.5
	2106	3.5		2125	0.7
22nd Tuesday	0315	0.6	30th Wednesday ☽	0358	3.2
	0937	3.4		0942	1.2
	1540	0.8		1606	3.4
	2146	3.6		2240	0.8
23rd Wednesday ●	0352	0.5			
	1011	3.5			
	1619	0.7			
	2227	3.7			



## December 2022

	Time	Metres	Time	Metres	
<b>1st</b> Thursday	0508 1053 1718 2356	3.1 1.2 3.4 0.8	<b>8th</b> Thursday	0448 1108 1707 2328	0.8 3.5 0.8 3.4
<b>2nd</b> Friday	0618 1206 1832	3.1 1.2 3.3	<b>9th</b> Friday	0523 1143 1743	0.9 3.6 0.8
<b>3rd</b> Saturday	0104 0721 1315 1937	0.7 3.1 1.2 3.4	<b>10th</b> Saturday	0003 0558 1219 1818	3.3 1.0 3.6 0.8
<b>4th</b> Sunday	0203 0816 1416 2033	0.7 3.2 1.1 3.4	<b>11th</b> Sunday	0038 0633 1256 1854	3.2 1.0 3.6 0.8
<b>5th</b> Monday	0253 0905 1507 2123	0.7 3.3 1.0 3.5	<b>12th</b> Monday	0116 0710 1335 1933	3.2 1.1 3.6 0.8
<b>6th</b> Tuesday	0335 0949 1551 2209	0.7 3.4 0.9 3.5	<b>13th</b> Tuesday	0157 0750 1416 2014	3.1 1.1 3.5 0.9
<b>7th</b> Wednesday	0413 1030 1630 2250	0.8 3.5 0.9 3.4	<b>14th</b> Wednesday	0242 0835 1457 2100	3.0 1.1 3.4 0.9
			<b>15th</b> Thursday	0331 0924 1542 2152	3.0 1.2 3.3 1.0

## Tide Tables 2022

	Time	Metres		Time	Metres
<b>16th</b> Friday <small>☾</small>	0426	2.9	<b>24th</b> Saturday	0459	0.6
	1019	1.3		1121	3.6
	1634	3.2		1735	0.5
	2249	1.0		2353	3.6
<b>17th</b> Saturday	0526	2.9	<b>25th</b> Sunday	0548	0.7
	1119	1.3		1211	3.7
	1734	3.2		1825	0.4
	2351	1.0			
<b>18th</b> Sunday	0627	2.9	<b>26th</b> Monday	0047	3.5
	1225	1.3		0638	0.8
	1837	3.2		1303	3.7
				1917	0.4
<b>19th</b> Monday	0054	0.9	<b>27th</b> Tuesday	0144	3.4
	0724	3.0		0731	0.8
	1329	1.2		1357	3.7
	1936	3.3		2013	0.4
<b>20th</b> Tuesday	0151	0.8	<b>28th</b> Wednesday	0242	3.3
	0816	3.2		0826	0.9
	1425	1.0		1451	3.7
	2031	3.4		2111	0.5
<b>21st</b> Wednesday	0241	0.7	<b>29th</b> Thursday	0340	3.2
	0903	3.3		0922	1.0
	1514	0.9		1547	3.6
	2122	3.5		2213	0.6
<b>22nd</b> Thursday	0327	0.7	<b>30th</b> Friday <small>☽</small>	0440	3.1
	0948	3.4		1022	1.0
	1601	0.7		1647	3.5
	2211	3.6		2318	0.7
<b>23rd</b> Friday <small>●</small>	0413	0.6	<b>31st</b> Saturday	0541	3.1
	1034	3.6		1126	1.1
	1648	0.6		1753	3.3
	2301	3.6			

## **Belfast Harbour**

Tide Tables 2022

# Contact Numbers

---

### **Belfast Harbour**

#### **Harbour Office**

Tel: 028 9055 4422

#### **Port Operations**

Tel: 028 9055 3014

#### **Port Control**

VHF Channel 12 

#### **Harbour Police**

Tel: 028 9055 3000

#### **Marina Enquires**

Tel: 028 9055 3282

### **River Lagan (DSD)**

#### **River Manager**

Tel: 028 9027 7642

#### **Weir Control / River Warden**

Tel: 028 9031 5304

#### **Weir Control**

VHF Channel 71   
Callsign "Lagan Weir"

# Belfast Harbour

Harbour Office  
Corporation Square  
Belfast BT1 3AL  
+44 28 9055 4422

[belfast-harbour.co.uk](http://belfast-harbour.co.uk)

