



FREE

Belfast Harbour

Tide Tables 2021

20

21

Safety First on Belfast Lough

Welcome to Belfast Harbour

Recreational Craft Must Contact "Belfast Harbour Radio"
on **VHF Channel 12** for traffic clearance to enter/exit.

All users of the Lough are expected to operate in a safe & responsible manner.

Users are required to always comply with international collision regulations.

Users are reminded to check the sailing & arrival times of ferries in the area.

Users are advised of the possibility of unexpected wavewash generated by shipping using Belfast Harbour.



WARNING
Beware of unexpected waves and spray
when launching or recovering craft



WARNING
Beware of unexpected waves
and spray



Welcome to Belfast Harbour

I am pleased to present the 2021 Tide Tables for Belfast Harbour.

I trust you will find the information contained within to be beneficial for your safe enjoyment of Belfast Harbour.

May I take this opportunity to draw your attention to the Notice to Mariners No.1 of 2021. This notice is a summary of all notices in force at the start of 2021 and can be found on our website www.belfast-harbour.co.uk.

I encourage you to visit the website regularly to acquaint yourself with the most up-to-date navigational safety information.

I wish you a safe and enjoyable visit to Belfast Harbour.

A handwritten signature in black ink, appearing to read 'K G Allen'.

Captain K G Allen
Belfast Harbour Master



Safety First

Lifejackets

Lifejackets save lives

Why wear a lifejacket?

If you're going afloat for pleasure, working around water or fishing, wear your lifejacket or buoyancy aid. It's useless otherwise.

Accidents can happen at any time in any weather. Good training and common sense help, but lives could be saved every year if people wore correctly-fitted, well-maintained lifejackets or buoyancy aids.

The water around the UK is cold all year round. It's surprisingly difficult to get back on board your boat once you're in the water, and the cold water will affect how your body works.

Wearing a lifejacket with crotch straps and spray hood could **double** your chances of survival, and increase your likelihood of being found.

See how crotch straps make a difference on MCA's YouTube channel.

What happens when you fall into cold water

Your blood pressure increases and you begin gasping for air.

If you're not wearing a lifejacket that lifts your airways out of the water, you can breathe in enough water to drown.

What to do if you fall into cold water

- Don't attempt to swim unless you're really close to your boat
- Relax as much as you can
- Find something to hold onto if you can, while your body adapts and you regain control of your breathing

After this, you should be able to call for help or get back on board quickly. Your rescuers should find it easier to help you if you're wearing a lifejacket.

The activities that need lifejackets the most

Statistics tell us that **commercial fishing, angling and sailing** are the activities where most lives might be saved by buoyancy-wear. Every year a panel of experts meets to analyse the year's fatal maritime incidents.

The panel makes a judgment about whether it is probable, possible or unlikely that the person involved could have been saved had they been wearing a lifejacket or buoyancy aid.

Between 2007 and 2010 the panel agreed that 86 lives might have been saved if those involved had been wearing a lifejacket or buoyancy aid.

Make sure that you wear a lifejacket or buoyancy aid as recommended by your sport's national governing body. Have a great trip, but enjoy it safely.

Advice for fishermen

MCA recommends that commercial fishermen wear a lifejacket or buoyancy aid at all times whilst on deck.



Belfast Harbour radio can be contacted via



Channel 12VHF



Information for Leisure Craft visiting Belfast Harbour

Following a significant extension, Belfast Harbour Marina boasts 775m of pontoons consisting of 85 berths, each with water and pay-as-you-go electricity connections.

The Marina can handle recreational vessels up to 15m LOA and maximum draught of 4.0m. Vessels greater than 4m draught or 15m length overall wishing to visit Belfast should contact the Harbour Master's Office prior to arrival. For more information on visiting the Marina, including tariffs, please visit the website - www.belfast-harbour.co.uk/port/marina

The following information has been provided for the benefit of recreational users, however current Notice to Mariners and guides should always be consulted on Belfast Harbour's website www.belfast-harbour.co.uk/port/navigation-pilotage/notice-to-mariners

In addition to the code of conduct (p8-11 overleaf), users of leisure craft should refer to and abide by 'Operating Rules within Belfast Harbour' which are available at www.belfast-harbour.co.uk/port/marina/operating-rules

Belfast Harbour

Code of Conduct

- 1 Conduct of Transits to and from Berths.**
- 1.1 Vessels transiting to and from berths must do so under power, yachts should have their sails down.
- 1.2 No vessels are permitted to be underway inside Harbour Limits during hours of darkness, unless vessels are fitted with the appropriate navigation lights as prescribed by the Collision Regulations.
- 1.3 Recreational craft not fitted with operational radar are not normally permitted to make transits of the Inner Harbour or Victoria Channel when visibility is less than 0.5 nautical miles.
- 1.4 Leisure craft are not permitted in Herdman Channel, or Musgrave Channel unless navigating to the Connswater.
- 1.5 Except where these Guidelines otherwise require; The International Regulations for Prevention of Collision at Sea (Collision Regulations) apply throughout Belfast Harbour Limits.
- In particular, attention is drawn to Rule 9, narrow channels – vessels should keep as near to the outer limit of the channel or fairway which lies on her starboard side as is safe and practicable.
- 1.6 The Master of a leisure craft shall ensure it is manoeuvred in a manner so as not to cause injury, nuisance, excessive wash, damage to property, loss of life, and must keep well clear of vessels fishing, dredging or otherwise working whilst underway.
- 1.7 All vessels must be equipped and manned to undertake all transits safely.
- 1.8 All vessels should carry Admiralty Chart 1752 or equivalent.
- 1.9 All vessels must carry sufficient number and type of lifejackets for those on board.
- 1.10 No sightseeing or stopping is permitted during transit.
- 1.11 Leisure craft must proceed at a safe and appropriate speed, and not exceed a maximum speed of 4 knots to South-West of the Twin
- Beacons unless granted prior consent by the Harbour Master.
- 1.12 Craft must maintain minimum safe speed when navigating near small craft moorings.
- 1.13 The Master of any vessel must comply with any temporary speed restrictions imposed by Port Control.
- 2 Compliance with Directions**
- The Master of any vessel shall comply with any direction given to him by the Harbour Master or an officer designated by the Harbour Master to do so on his behalf.
- 3 Priority of Vessels within Belfast Harbour Limits**
- 3.1 Leisure craft shall not impede the passage of any vessel greater than 20m in length navigating within the inner Harbour or Victoria Channel.
- 3.2 Leisure craft, which are not confined to the fairway, shall not make use of the fairway so as to obstruct other vessels which can navigate only within the fairway, and when navigating across the Channel or through the inner Harbour shall do so by the shortest route that will avoid such obstruction.
- 3.3 Any vessel upon encountering a vessel exhibiting the signals prescribed by the Collision Regulations for vessels constrained by their draught, shall afford such vessels a minimum distance of 5 cables ahead and 2 cables astern.
- 4 Carriage of VHF / Mobile Telephone & Communication with Port Control**
- 4.1 Belfast Harbour strongly recommend all vessels navigating within Harbour Limits to carry VHF radio. Where carried, VHF radio watch is to be maintained on Ch 12 when within port limits.
- 4.2 Where no VHF is carried, a mobile telephone should be used in cases of emergency to contact Port Control.
- 4.3 Port Control, callsign "Belfast Harbour Radio", maintains a listening watch at all times on VHF channel 12. Port Control is also contactable in case of emergency by telephone on – 028 9055 3010.
- 4.4 Inward vessels must report to Port Control when:
- Entering the Main Channel, stating location
 - Arriving at their berth
- 4.5 Departing vessels must report to Port Control when:
- Prior to departing their berth
 - Upon exiting the main channel, stating location
- 4.6 Vessels wishing to cross the Victoria Channel to the South-West of No.2 buoy must contact Port Control.
- 4.7 Any emergencies should be communicated firstly to Belfast Coastguard on VHF Ch 16, and to Port Control.
- 4.8 Vessels should avoid excessive use of VHF Ch 12 wherever possible.

5 Age of Master

No person under the age of 16 years shall steer or navigate within the Harbour any power driven vessel unless in possession of an appropriate RYA qualification or accompanied by a person of 18 years or older.

6 Navigation under the influence of Alcohol or Drugs Prohibited

The Master of any vessel shall not move the vessel within Harbour Limits if his ability to do so is impaired by drink or drugs or if the proportion of alcohol in his breath, blood or urine exceeds

- i) In the case of breath, 35 micrograms of alcohol in 100 ml
- ii) In the case of blood, 80 milligrams of alcohol in 100 ml, and
- iii) In the case of urine, 107 milligrams of alcohol in 100 millilitres.

7 Public Landings

The Master of a vessel shall not place his vessel or allow it to be in such a situation as to obstruct or interfere with the access to any recognised landing place or leave it moored alongside any such landing place unattended without the permission of the person in charge of that landing place.

8 Water Sports

Water Skiing, Wind Surfing, Kite Surfing, Jet Skiing, rowing, canoeing or kayaking are not permitted in the Inner Harbour or Victoria Channel without prior permission from the Harbour Master.

9 Diving / Swimming

- 9.1 No swimming or recreational diving is permitted inside the Inner Harbour or Victoria Channel
- 9.2 Diving elsewhere within Harbour Limits is only permitted with prior consent of the Harbour Master
- 9.3 Those wishing to undertake commercial diving operations should contact Port Operations during office hours.

10 Events

Organisers of water based events anywhere inside Harbour Limits are required to provide a minimum of 14 days notice in writing to the Harbour Master, and provide event plans, risk assessments, and evidence of insurance as appropriate.

11 Rigging to be Secured

Any vessel when moored within Harbour Limits fitted with a mast shall at all times ensure the rigging is secured so that it does not make undue noise.

12 Provision of Proper Fenders

The Master and the owner of a vessel shall ensure that she is provided with a sufficient number of fenders of a type that would float in water and a size appropriate to the vessel and, when berthing and leaving or lying at a quay, pontoon, or against other vessels, the Master shall cause the vessel to be fended off from that quay or those other vessels so as to prevent damage to that quay, pontoons, those other vessels or any other property.

13 Access Across Decks

The Master of a vessel alongside a quay, pontoon, or alongside any vessel already berthed within the Harbour shall, if required to do so by the Harbour Master or other authorised officer, give free access across the deck of his vessel for persons and goods to and from vessels berthed alongside his decks.

14 Unmooring of Vessels

No person except the Harbour Master or a person acting on behalf of the Harbour Master in pursuance of his duties shall for any purpose whatsoever unmoor or cast off or loose any mooring of any vessel moored within the Harbour without the previous permission of the owner or lawful Master of such a vessel.

15 Vessels not to make fast to Unauthorised Objects

The Master of a vessel shall not knowingly cause or permit any person to secure the vessel to any post, quay, ring, tide board, steps, vertical ladder, fender or any other thing or place not assigned for that purpose.

16 Fishing within Harbour Limits

- 16.1 No person shall fish or use any fishing apparatus anywhere within the Inner Harbour.

- 16.2 The Master of a vessel shall ensure that no fishing apparatus is placed in or near the Victoria Channel in a manner that could pose a risk of being fouled by any vessel using the Victoria Channel or waters contiguous to it. If the owner of fishing apparatus shall not comply with any direction of the Harbour Master given to remove the apparatus, the Harbour Master may, on giving where reasonably practicable notice, remove such apparatus.

17 Registration & Insurance of Leisure Craft Vessels

- 17.1 Every vessel must have their name or ID letters conspicuously marked on it.
- 17.2 Every vessel wishing to navigate within the Inner Harbour or use the Leisure Craft Facilities must have appropriate third party marine insurance to cover a minimum of £2 million.

18 Non Displacement Craft

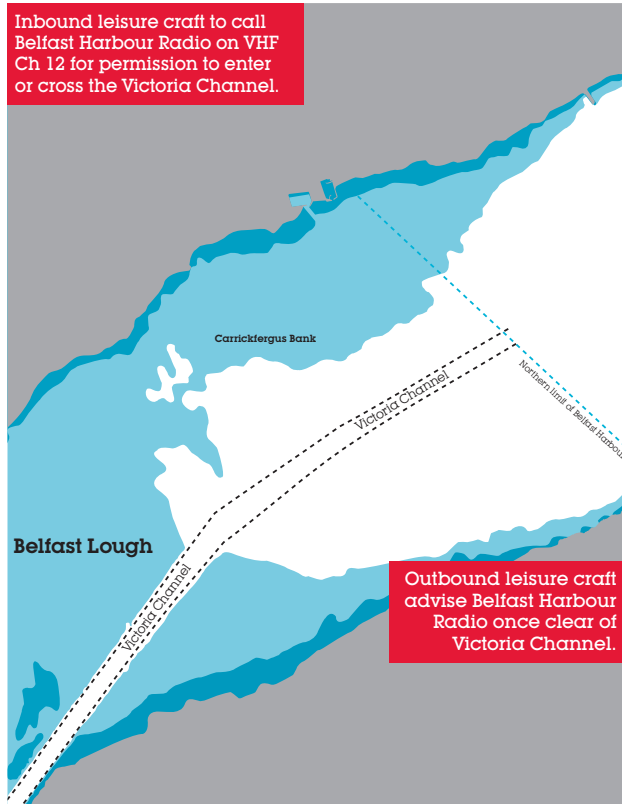
Hovercraft, WIG craft and Seaplanes are not permitted within Harbour Limits without prior permission from the Harbour Master.

19 Pontoon Access

- 19.1 The Pontoon should be kept clear of obstructions at all times to maintain a safe means of access.

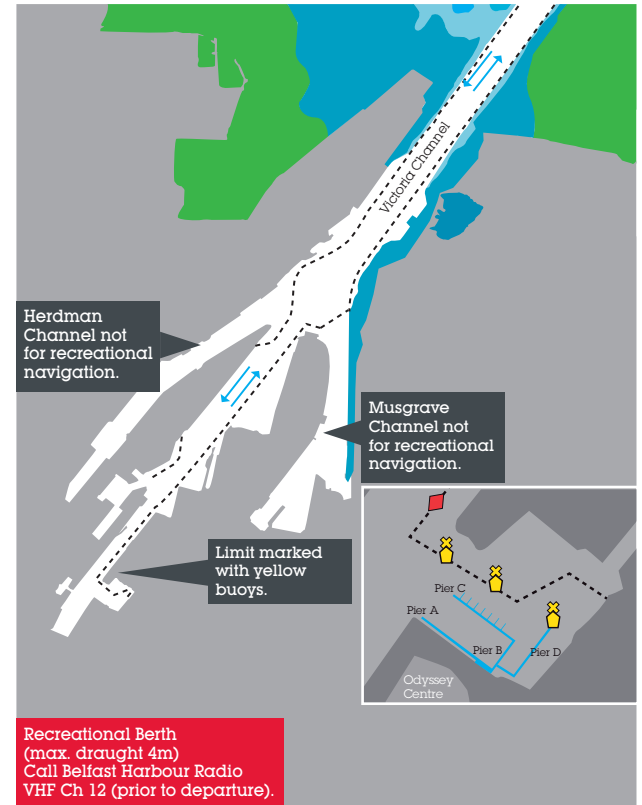
Belfast Harbour

Tide Tables 2021



For guidance only – do not use for navigation

Guidance for recreational users



For guidance only – do not use for navigation

Belfast Harbour

Tide Tables 2021

Emergency Contact

Numbers for recreational users

Coastguard

VHF Channel 16

Tel +44 (0)28 9146 3933
or 999

Belfast Harbour Radio

VHF Channel 12

Belfast Harbour Office

Tel +44 (0)28 9055 4422

Port Operations

Tel +44 (0)28 9055 3014

Belfast Harbour Police

Tel +44 (0)28 9055 3000

Northern Ireland Fire & Rescue Service

Tel +44 (0)28 9266 4221
or 999

Northern Ireland Ambulance Service

Tel 999

Attention is drawn to the Notices to Mariners on Belfast Harbour's website www.belfast-harbour.co.uk; in particular to Notice to Mariners No.1 of 2021.

Constants

Port	H	M	Port	H	M
Ardglass	+0	23	Kyleakin	-4	28
Ayr	+0	56	Lamlash	+0	50
Ballycastle	-3	20	Larne	+0	4
Bangor	+0	10	Londonderry	-2	53
Buncrana, Lough Swilly	-5	6	Mull of Kintyre	-0	24
Carlingford Bar	+0	24	Newcastle, Dundrum Bay	+0	30
Campbeltown	+0	44	Oban	-5	24
Coleraine	-4	3	Point of Ayre	+0	3
Corran Narrows	-5	17	Portavogie	+0	15
Crinan	+5	48	Port Ellen (Islay)	-6	0
Donaghadee	+0	20	Port Patrick	+0	10
Douglas, IoM	+0	7	Portree	-4	38
Dublin	+0	39	Portrush	-4	33
East Tarbert (Lough Fyne)	+0	55	Red Bay	+0	6
Galway	-6	00	Strangford Bar	+0	16
Gigha Sound	+3	31	Strangford Quay	+1	52
Heysham	+0	11	Tobermory	-5	14
Killyleagh, Co. Down	+2	2	Warrenpoint, Co. Down	+0	30

Times & Heights of High & Low Waters

All times are in (GMT)
Greenwich Mean Time.

Daylight saving time will begin at 0100 hrs on Sunday 28th March and end at 0200hrs on Sunday 31st October. Between these dates one hour should be added to GMT times.

Heights refer to Harbour Datum which is also Admiralty Chart Datum.

Tidal predictions for Belfast have been computed by The United Kingdom Hydrographic Office (copyright reserved).

Phases of the Moon are reproduced, with permission, from data supplied by The United Kingdom Hydrographic Office.

Follow these steps carefully

- The International Regulations for the Prevention of Collision at Sea Rules apply throughout the Lough. Know them and follow them.
- Give early notice of your intentions as ferries approach very quickly.
- Check the ferry times in your area.
- Watch out for the ferry wash, especially when launching or retrieving boats.

For information on winter and summer berthing, please call **028 9055 3282** or e-mail m.office@belfast-harbour.co.uk

Further details are also available on the Belfast Harbour website: belfast-harbour.co.uk/port/marina



Belfast Harbour

Tide Tables 2021

Levels of Tides

Above Harbour Datum

	Feet	Meters
Mean High Water, Spring Tides	11.4	3.5
Mean High Water, Neap Tides	9.7	2.9
Mean Low Water, Spring Tides	1.4	0.4
Mean Low Water, Neap Tides	3.5	1.1

Highest Spring Tide on record

5th January 1991	16.07	4.9
------------------	-------	-----

Average range of tide

(At Spring Tides)	10.0	3.1
(At Neap Tides)	6.2	1.9

The Tidal current runs at the rate of .33 knot on Spring Tides, and .25 knot on Neap Tides.

Harbour & ordnance datum

Harbour Datum Level of No.2 Clarendon Dry Dock Sill, which is also Admiralty Chart Datum.

Ordnance datum (1958)

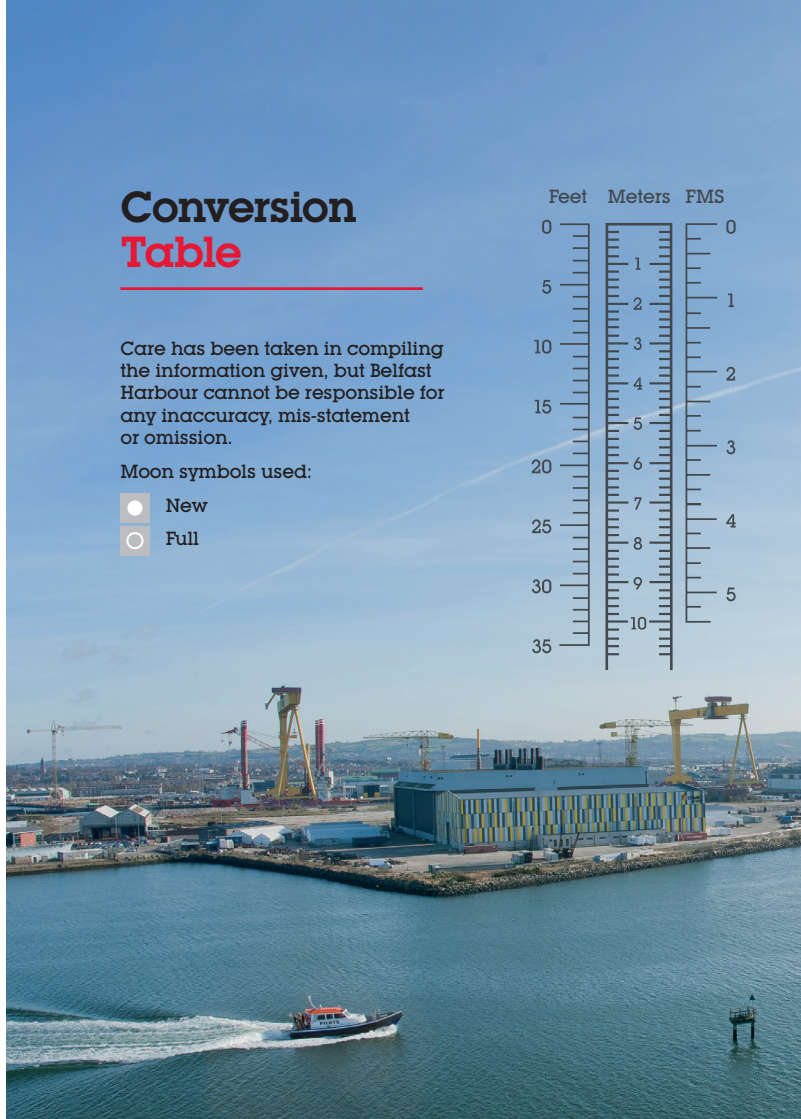
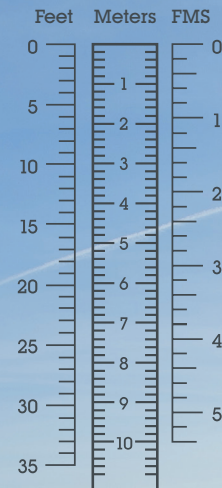
6.61 feet (2.0 metres) above Harbour datum.

Conversion Table

Care has been taken in compiling the information given, but Belfast Harbour cannot be responsible for any inaccuracy, mis-statement or omission.

Moon symbols used:

-  New
-  Full



January 2021

	Time	Metres		Time	Metres		Time	Metres
			8th Friday	0613	3.0			
				1221	1.0			
				1835	3.3			
1st Friday	0002	3.3	9th Saturday	0055	0.7	16th Saturday	0105	3.3
	0612	0.8		0723	3.1		0650	0.8
	1223	3.6		1334	1.0		1320	3.7
	1834	0.6		1947	3.4		1930	0.5
2nd Saturday	0040	3.2	10th Sunday	0200	0.7			
	0652	0.8		0828	3.2			
	1302	3.6		1438	0.8			
	1915	0.6		2052	3.4			
3rd Sunday	0124	3.2	11th Monday	0257	0.7	17th Sunday	0148	3.2
	0735	0.9		0926	3.4		0731	0.8
	1346	3.6		1535	0.7		1401	3.6
	1959	0.6		2149	3.5		2011	0.6
4th Monday	0212	3.2	12th Tuesday	0349	0.7	18th Monday	0231	3.1
	0821	0.9		1018	3.5		0811	0.9
	1433	3.6		1628	0.6		1443	3.5
	2047	0.6		2242	3.5		2052	0.7
5th Tuesday	0304	3.1	13th Wednesday	0438	0.7	19th Tuesday	0314	3.1
	0911	0.9		1106	3.6		0852	0.9
	1524	3.5		1717	0.5		1525	3.4
	2140	0.6		2332	3.5		2135	0.8
6th Wednesday	0400	3.1	14th Thursday	0524	0.7	20th Wednesday	0400	3.0
	1007	1.0		1152	3.7		0937	1.0
	1620	3.4		1803	0.4		1612	3.3
	2239	0.7					2225	0.9
7th Thursday	0503	3.0	15th Friday	0019	3.4	21st Thursday	0449	2.9
	1109	1.0		0608	0.7		1028	1.1
	1723	3.4		1237	3.7		1703	3.1
	2345	0.7		1847	0.4		2331	1.0
						22nd Friday	0543	2.9
							1134	1.2
							1801	3.0
						23rd Saturday	0041	1.1
							0641	2.9
							1256	1.3
							1905	2.9
						24th Sunday		
							0141	1.1
							0745	3.0
							1401	1.2
							2014	2.9
						25th Monday		
							0233	1.0
							0846	3.1
							1455	1.0
							2116	3.0
						26th Tuesday		
							0319	0.9
							0937	3.2
							1540	0.9
							2204	3.1
						27th Wednesday		
							0400	0.8
							1021	3.4
							1621	0.7
							2244	3.2
						28th Thursday		
							0439	0.7
							1058	3.5
							1701	0.6
							2318	3.2
						29th Friday		
							0518	0.7
							1131	3.5
							1740	0.5
							2348	3.2
						30th Saturday		
							0557	0.6
							1204	3.6
							1819	0.4
						31st Sunday		
							0023	3.2
							0636	0.6
							1243	3.6
							1859	0.3

May 2021

	Time	Metres	Time	Metres	
1st Saturday	0143	3.5	8th Saturday	0256	0.9
	0747	0.3		0906	3.2
	1421	3.4		1528	0.5
	2009	0.6		2134	3.1
2nd Sunday	0236	3.4	9th Sunday	0339	0.8
	0845	0.5		0950	3.3
	1520	3.2		1603	0.5
	2108	0.9		2213	3.2
3rd Monday	0332	3.3	10th Monday	0412	0.8
	0956	0.6		1029	3.3
	1624	3.0		1632	0.5
	2218	1.1		2248	3.2
4th Tuesday	0435	3.1	11th Tuesday	0442	0.7
	1117	0.7		1103	3.3
	1739	2.9		1701	0.6
	2335	1.2		2319	3.3
5th Wednesday	0553	3.0	12th Wednesday	0512	0.7
	1234	0.7		1134	3.2
	1857	2.9		1731	0.7
				2350	3.3
6th Thursday	0050	1.2	13th Thursday	0544	0.7
	0713	3.1		1203	3.2
	1344	0.6		1802	0.7
	2000	2.9			
7th Friday	0159	1.1	14th Friday	0022	3.4
	0815	3.1		0616	0.6
	1442	0.5		1234	3.2
	2051	3.0		1834	0.8
15th Saturday			16th Sunday	0057	3.4
				0650	0.6
				1309	3.2
				1910	0.8

	Time	Metres	Time	Metres	
16th Sunday	0133	3.4	24th Monday	0252	0.7
	0728	0.7		0856	3.5
	1349	3.1		1509	0.2
	1950	0.9		2127	3.3
17th Monday	0212	3.3	25th Tuesday	0338	0.5
	0810	0.7		0946	3.6
	1435	3.0		1553	0.2
	2036	1.0		2212	3.5
18th Tuesday	0256	3.2	26th Wednesday	0423	0.4
	0900	0.8		1035	3.7
	1530	2.9		1637	0.2
	2130	1.1		2259	3.5
19th Wednesday	0347	3.1	27th Thursday	0508	0.3
	0959	0.8		1125	3.7
	1633	2.8		1723	0.3
	2236	1.2		2348	3.6
20th Thursday	0447	3.0	28th Friday	0556	0.3
	1112	0.8		1217	3.6
	1741	2.8		1812	0.4
	2352	1.2			
21st Friday	0554	3.0	29th Saturday	0039	3.6
	1230	0.7		0646	0.3
	1849	2.9		1312	3.5
				1902	0.6
22nd Saturday	0104	1.1	30th Sunday	0132	3.6
	0701	3.1		0739	0.4
	1333	0.5		1409	3.4
	1949	3.0		1957	0.8
23rd Sunday	0203	0.9	31st Monday	0224	3.5
	0802	3.3		0838	0.4
	1424	0.4		1506	3.2
	2040	3.2		2055	0.9

June 2021

	Time	Metres	Time	Metres	Time	Metres	Time	Metres	
			0340	0.9	16th	0232	3.4	0409	0.5
			0958	3.2	Wednesday	0843	0.6	1020	3.6
			1559	0.7		1505	3.0	1622	0.4
			2215	3.2		2112	1.0	2245	3.5
1st	0316	3.4	0416	0.8	17th	0321	3.3	0500	0.4
Tuesday	0943	0.5	1035	3.2	Thursday	0936	0.6	1113	3.6
	1606	3.0	1632	0.7		1602	2.9	1711	0.5
	2157	1.0	2250	3.3		2207	1.0	2336	3.6
2nd	0412	3.3	0450	0.8	18th	0415	3.3	0550	0.3
Wednesday	1051	0.6	1108	3.2	Friday	1036	0.7	1206	3.5
	1711	2.9	1706	0.7		1704	2.9	1800	0.6
	2301	1.1	2325	3.4		2307	1.0		
3rd	0514	3.2	0525	0.7	19th	0515	3.2	0026	3.6
Thursday	1157	0.7	1140	3.2	Saturday	1141	0.6	0640	0.3
	1819	2.9	1741	0.8		1808	2.9	1259	3.4
			2359	3.4				1850	0.7
4th	0006	1.2	0600	0.7	20th	0012	1.0	0117	3.6
Friday	0626	3.1	1211	3.2	Sunday	0622	3.2	0731	0.3
	1301	0.7	1817	0.8		1248	0.6	1352	3.3
	1921	2.9				1910	3.0	1942	0.8
5th	0110	1.1	0033	3.4	21st	0120	0.9	0205	3.6
Saturday	0734	3.1	0636	0.7	Monday	0729	3.3	0824	0.4
	1357	0.7	1246	3.1		1348	0.5	1445	3.2
	2013	3.0	1855	0.8		2008	3.2	2033	0.9
6th	0209	1.1	0109	3.4	22nd	0222	0.8	0253	3.5
Sunday	0830	3.1	0714	0.6	Tuesday	0831	3.4	0918	0.5
	1445	0.7	1326	3.1		1443	0.4	1537	3.0
	2058	3.1	1936	0.9		2102	3.3	2125	0.9
7th	0259	1.0	0149	3.4	23rd	0317	0.6		
Monday	0917	3.2	0756	0.6	Wednesday	0927	3.5		
	1524	0.7	1413	3.0		1533	0.4		
	2139	3.2	2022	0.9		2154	3.4		

July 2021

	Time	Metres	Time	Metres	
1st Thursday ☾	0341	3.4	8th Thursday	0352	0.9
	1014	0.6		1011	3.1
	1629	3.0		1607	0.8
	2218	1.0		2225	3.3
2nd Friday	0432	3.3	9th Friday	0430	0.8
	1113	0.7		1049	3.1
	1723	2.9		1644	0.8
	2317	1.1		2303	3.4
3rd Saturday	0527	3.1	10th Saturday ●	0507	0.7
	1212	0.8		1124	3.1
	1820	2.9		1722	0.8
				2338	3.4
4th Sunday	0020	1.1	11th Sunday	0544	0.6
	0630	3.0		1153	3.1
	1310	0.9		1800	0.8
	1917	2.9			
5th Monday	0122	1.1	12th Monday	0010	3.5
	0739	3.0		0621	0.6
	1402	0.9		1225	3.1
	2012	3.0		1839	0.8
6th Tuesday	0219	1.1	13th Tuesday	0045	3.5
	0839	3.0		0659	0.5
	1448	0.8		1304	3.1
	2100	3.1		1920	0.8
7th Wednesday	0309	1.0	14th Wednesday	0125	3.5
	0928	3.1		0739	0.5
	1529	0.8		1348	3.1
	2144	3.2		2002	0.8
15th Thursday			16th Friday	0208	3.5
				0822	0.5
				1437	3.1
				2047	0.8

	Time	Metres	Time	Metres	
16th Friday	0255	3.5	24th Saturday ○	0456	0.4
	0909	0.5		1106	3.4
	1529	3.0		1702	0.6
	2136	0.8		2325	3.6
17th Saturday ☽	0346	3.4	25th Sunday	0544	0.3
	1002	0.5		1155	3.4
	1625	3.0		1749	0.7
	2231	0.9			
18th Sunday	0443	3.3	26th Monday	0013	3.6
	1102	0.6		0630	0.3
	1727	3.0		1243	3.3
	2334	0.9		1834	0.7
19th Monday	0549	3.3	27th Tuesday	0058	3.6
	1211	0.7		0714	0.3
	1834	3.0		1330	3.2
				1918	0.8
20th Tuesday	0050	0.9	28th Wednesday	0142	3.6
	0701	3.2		0757	0.4
	1323	0.7		1415	3.1
	1941	3.1		2000	0.8
21st Wednesday	0204	0.8	29th Thursday	0225	3.5
	0813	3.3		0838	0.5
	1426	0.7		1459	3.1
	2045	3.2		2041	0.9
22nd Thursday	0307	0.7	30th Friday	0307	3.4
	0917	3.4		0920	0.7
	1522	0.6		1544	3.0
	2143	3.4		2124	0.9
23rd Friday	0404	0.5	31st Saturday ☾	0352	3.3
	1014	3.4		1008	0.8
	1614	0.6		1631	3.0
	2236	3.5		2212	1.0

August 2021

	Time	Metres		Time	Metres
			8th Sunday ●	0447	0.6
				1108	3.1
				1702	0.7
				2313	3.5
1st Sunday	0440	3.1	9th Monday	0524	0.5
	1110	1.0		1135	3.2
	1721	2.9		1739	0.7
	2313	1.2		2343	3.5
2nd Monday	0535	2.9	10th Tuesday	0601	0.4
	1220	1.1		1202	3.2
	1816	2.9		1817	0.7
3rd Tuesday	0034	1.2	11th Wednesday	0018	3.6
	0638	2.8		0637	0.4
	1322	1.1		1239	3.2
	1916	3.0		1855	0.7
4th Wednesday	0143	1.2	12th Thursday	0059	3.6
	0752	2.8		0715	0.3
	1416	1.0		1321	3.2
	2020	3.1		1935	0.7
5th Thursday	0240	1.0	13th Friday	0143	3.6
	0903	2.9		0756	0.3
	1503	0.9		1408	3.2
	2116	3.2		2018	0.7
6th Friday	0328	0.9	14th Saturday	0230	3.6
	0952	3.0		0840	0.4
	1545	0.9		1457	3.2
	2202	3.3		2105	0.7
7th Saturday	0409	0.7	15th Sunday ☽	0320	3.5
	1033	3.1		0929	0.5
	1624	0.8		1552	3.1
	2241	3.4		2159	0.8

	Time	Metres		Time	Metres
16th Monday	0417	3.3	24th Tuesday	0613	0.3
	1028	0.7		1222	3.3
	1654	3.0		1811	0.7
	2306	1.0			
17th Tuesday	0525	3.2	25th Wednesday	0035	3.6
	1142	0.9		0647	0.4
	1806	3.0		1302	3.2
				1846	0.8
18th Wednesday	0037	1.0	26th Thursday	0114	3.5
	0645	3.1		0720	0.5
	1309	1.0		1341	3.2
	1926	3.0		1921	0.8
19th Thursday	0158	0.9	27th Friday	0153	3.5
	0809	3.1		0752	0.6
	1419	0.9		1420	3.2
	2040	3.2		1957	0.8
20th Friday	0304	0.7	28th Saturday	0232	3.4
	0916	3.2		0826	0.7
	1517	0.8		1502	3.1
	2139	3.4		2037	0.9
21st Saturday	0400	0.5	29th Sunday	0313	3.3
	1011	3.3		0905	0.9
	1608	0.7		1546	3.1
	2228	3.5		2121	1.0
22nd Sunday ☉	0450	0.4	30th Monday ☾	0358	3.1
	1058	3.3		0951	1.1
	1653	0.7		1635	3.0
	2313	3.6		2214	1.1
23rd Monday	0533	0.3	31st Tuesday	0451	2.9
	1141	3.3		1056	1.2
	1734	0.7		1730	3.0
	2355	3.6		2330	1.3

September 2021

	Time	Metres		Time	Metres
1st Wednesday	0553 1240 1831	2.8 1.3 2.9	8th Wednesday	0534 1137 1750 2351	0.3 3.3 0.6 3.7
2nd Thursday	0108 0705 1345 1937	1.2 2.7 1.2 3.0	9th Thursday	0610 1213 1827	0.2 3.3 0.6
3rd Friday	0212 0838 1437 2044	1.1 2.8 1.1 3.1	10th Friday	0033 0647 1255 1907	3.7 0.3 3.4 0.5
4th Saturday	0302 0933 1522 2134	0.9 3.0 0.9 3.3	11th Saturday	0119 0728 1340 1950	3.7 0.3 3.3 0.6
5th Sunday	0345 1012 1602 2212	0.7 3.1 0.8 3.4	12th Sunday	0207 0813 1430 2039	3.6 0.5 3.3 0.7
6th Monday	0423 1043 1639 2243	0.5 3.2 0.7 3.5	13th Monday	0301 0903 1525 2136	3.5 0.7 3.2 0.8
7th Tuesday	0459 1109 1714 2314	0.4 3.3 0.6 3.6	14th Tuesday	0402 1002 1631 2252	3.3 0.9 3.1 1.0
			15th Wednesday	0515 1126 1750	3.1 1.2 3.0

	Time	Metres		Time	Metres
16th Thursday	0034 0644 1302 1920	1.0 3.0 1.2 3.1	24th Friday	0044 0642 1305 1846	3.5 0.6 3.3 0.8
17th Friday	0154 0809 1414 2033	0.9 3.0 1.1 3.2	25th Saturday	0119 0711 1341 1921	3.4 0.7 3.3 0.8
18th Saturday	0301 0911 1513 2127	0.6 3.2 1.0 3.4	26th Sunday	0155 0745 1421 2000	3.3 0.8 3.3 0.8
19th Sunday	0354 1000 1600 2214	0.5 3.3 0.8 3.6	27th Monday	0234 0822 1504 2042	3.2 0.9 3.3 1.0
20th Monday	0438 1043 1640 2256	0.4 3.3 0.8 3.6	28th Tuesday	0317 0905 1552 2132	3.1 1.1 3.2 1.1
21st Tuesday	0515 1122 1713 2334	0.4 3.3 0.8 3.6	29th Wednesday	0410 0959 1647 2238	2.9 1.3 3.0 1.3
22nd Wednesday	0546 1158 1744	0.5 3.3 0.8	30th Thursday	0515 1145 1749	2.8 1.5 3.0
23rd Thursday	0010 0614 1232 1814	3.5 0.5 3.3 0.8			

October 2021

	Time	Metres		Time	Metres
			8th Friday	0540 0.2 1150 3.5 1800 0.5	
1st Friday	0030 1.3 0626 2.7 1312 1.4 1855 3.0		9th Saturday	0012 3.8 0620 0.3 1232 3.5 1842 0.5	
2nd Saturday	0139 1.1 0754 2.8 1408 1.2 2002 3.1		10th Sunday	0101 3.8 0704 0.4 1319 3.5 1929 0.6	
3rd Sunday	0232 0.9 0900 3.0 1455 1.0 2056 3.3		11th Monday	0154 3.6 0751 0.6 1411 3.4 2022 0.7	
4th Monday	0315 0.6 0938 3.2 1535 0.8 2136 3.5		12th Tuesday	0252 3.4 0844 0.9 1510 3.3 2124 0.9	
5th Tuesday	0353 0.4 1010 3.3 1611 0.7 2212 3.6		13th Wednesday	0357 3.2 0949 1.2 1619 3.2 2250 1.0	
6th Wednesday	0428 0.3 1040 3.4 1646 0.6 2248 3.7		14th Thursday	0513 3.0 1117 1.3 1739 3.1	
7th Thursday	0503 0.2 1113 3.5 1722 0.5 2328 3.8		15th Friday	0026 1.0 0642 3.0 1249 1.3 1906 3.2	

	Time	Metres		Time	Metres
			16th Saturday	0144 0.8 0757 3.0 1403 1.2 2014 3.3	
			17th Sunday	0247 0.6 0854 3.2 1501 1.1 2107 3.5	
			18th Monday	0337 0.5 0940 3.3 1545 0.9 2153 3.6	
			19th Tuesday	0417 0.5 1020 3.3 1620 0.9 2233 3.6	
			20th Wednesday	0449 0.5 1057 3.4 1649 0.8 2311 3.5	
			21st Thursday	0515 0.6 1131 3.4 1718 0.8 2344 3.5	
			22nd Friday	0542 0.7 1201 3.4 1748 0.8	
			23rd Saturday	0014 3.4 0610 0.8 1233 3.4 1819 0.8	
			24th Sunday	0046 3.4 0640 0.9 1308 3.5 1853 0.8	
			25th Monday	0121 3.3 0713 0.9 1346 3.5 1931 0.9	
			26th Tuesday	0159 3.2 0750 1.0 1427 3.4 2013 1.0	
			27th Wednesday	0243 3.1 0833 1.2 1512 3.3 2102 1.1	
			28th Thursday	0335 3.0 0927 1.3 1605 3.2 2203 1.2	
			29th Friday	0440 2.8 1041 1.5 1707 3.1 2329 1.2	
			30th Saturday	0552 2.8 1224 1.5 1813 3.0	
			31st Sunday	0055 1.1 0705 2.9 1330 1.3 1918 3.2	

November 2021

	Time	Metres		Time	Metres
1st Monday	0153	0.9	8th Monday	0051	3.7
	0810	3.0		0645	0.6
	1420	1.1		1309	3.6
	2015	3.3		1916	0.6
2nd Tuesday	0238	0.6	9th Tuesday	0148	3.6
	0857	3.2		0736	0.8
	1502	0.9		1404	3.6
	2102	3.5		2013	0.7
3rd Wednesday	0318	0.5	10th Wednesday	0249	3.4
	0935	3.4		0833	1.0
	1540	0.7		1503	3.5
	2144	3.7		2120	0.8
4th Thursday	0355	0.3	11th Thursday	0353	3.2
	1012	3.5		0940	1.2
	1618	0.6		1607	3.4
	2226	3.8		2241	0.9
5th Friday	0434	0.3	12th Friday	0506	3.1
	1051	3.6		1058	1.4
	1657	0.5		1721	3.3
	2311	3.9			
6th Saturday	0515	0.3	13th Saturday	0003	0.9
	1132	3.7		0623	3.0
	1740	0.5		1219	1.4
	2359	3.8		1839	3.3
7th Sunday	0515	0.3	14th Sunday	0116	0.8
	1132	3.7		0731	3.1
	1740	0.5		1331	1.3
	2359	3.8		1945	3.3
8th Monday	0559	0.5	15th Monday	0218	0.7
	1218	3.7		0826	3.2
	1826	0.5		1431	1.1
				2040	3.4

	Time	Metres		Time	Metres
16th Tuesday	0307	0.7	24th Wednesday	0134	3.2
	0912	3.3		0730	1.1
	1517	1.0		1358	3.5
	2127	3.5		1954	0.9
17th Wednesday	0346	0.7	25th Thursday	0217	3.1
	0953	3.3		0814	1.2
	1554	1.0		1440	3.4
	2209	3.5		2041	1.0
18th Thursday	0416	0.7	26th Friday	0306	3.0
	1030	3.4		0906	1.3
	1625	0.9		1527	3.3
	2246	3.5		2136	1.0
19th Friday	0445	0.8	27th Saturday	0406	2.9
	1104	3.5		1007	1.4
	1656	0.9		1623	3.2
	2319	3.4		2240	1.0
20th Saturday	0515	0.9	28th Sunday	0513	2.9
	1135	3.5		1117	1.4
	1728	0.9		1727	3.2
	2350	3.4		2352	1.0
21st Sunday	0545	0.9	29th Monday	0621	2.9
	1207	3.6		1230	1.3
	1800	0.9		1833	3.2
22nd Monday	0021	3.3	30th Tuesday	0058	0.8
	0617	1.0		0723	3.1
	1242	3.6		1332	1.2
	1834	0.9		1934	3.4
23rd Tuesday	0056	3.3			
	0652	1.0			
	1319	3.6			
	1912	0.9			

December 2021

	Time	Metres		Time	Metres		Time	Metres
			8th Wednesday	0142	3.5			
				0726	0.9			
				1357	3.7			
				2008	0.6			
1st Wednesday	0154	0.7	9th Thursday	0240	3.4	16th Thursday	0308	0.9
	0816	3.2		0823	1.0		0923	3.3
	1424	1.0		1452	3.6		1524	1.0
	2029	3.5		2111	0.6		2143	3.3
2nd Thursday	0242	0.5	10th Friday	0339	3.2	17th Friday	0345	0.9
	0903	3.4		0923	1.1		1003	3.4
	1511	0.8		1548	3.5		1603	1.0
	2119	3.7		2218	0.7		2224	3.3
3rd Friday	0326	0.5	11th Saturday	0442	3.1	18th Saturday	0419	0.9
	0948	3.6		1028	1.2		1040	3.5
	1556	0.6		1649	3.4		1638	0.9
	2208	3.8		2326	0.8		2300	3.3
4th Saturday	0411	0.4	12th Sunday	0548	3.0	19th Sunday	0453	0.9
	1033	3.7		1135	1.3		1115	3.5
	1641	0.5		1758	3.3		1712	0.9
	2258	3.8					2334	3.3
5th Sunday	0456	0.5	13th Monday	0032	0.8	20th Monday	0527	0.9
	1121	3.7		0652	3.0		1150	3.6
	1728	0.5		1242	1.3		1747	0.8
	2350	3.7		1906	3.3			
6th Monday	0544	0.6	14th Tuesday	0132	0.8	21st Tuesday	0006	3.2
	1211	3.7		0749	3.1		0602	0.9
	1818	0.5		1344	1.2		1224	3.6
				2006	3.3		1823	0.8
7th Tuesday	0044	3.6	15th Wednesday	0225	0.8	22nd Wednesday	0038	3.2
	0633	0.7		0839	3.2		0639	1.0
	1304	3.7		1439	1.1		1258	3.6
	1910	0.5		2058	3.3		1900	0.8
						23rd Thursday	0112	3.2
							0718	1.0
							1334	3.6
							1940	0.8
						24th Friday		
							0152	3.1
							0800	1.0
							1413	3.5
							2023	0.8
						25th Saturday		
							0238	3.1
							0845	1.1
							1457	3.4
							2110	0.8
						26th Sunday		
							0329	3.0
							0935	1.1
							1546	3.4
							2203	0.8
						27th Monday		
							0425	3.0
							1031	1.2
							1642	3.3
							2302	0.8
						28th Tuesday		
							0528	3.0
							1133	1.2
							1746	3.3
						29th Wednesday		
							0007	0.8
							0634	3.0
							1243	1.1
							1854	3.3
						30th Thursday		
							0113	0.7
							0737	3.1
							1350	1.0
							1959	3.4
						31st Friday		
							0213	0.7
							0835	3.3
							1450	0.8
							2059	3.5

Belfast Harbour

Tide Tables 2021

Contact Numbers

Belfast Harbour

Harbour Office

Tel: 028 9055 4422

Port Operations

Tel: 028 9055 3014

Port Control

VHF Channel 12 

Harbour Police

Tel: 028 9055 3000

Marina Enquires

Tel: 028 9055 3282

River Lagan (DSD)

River Manager

Tel: 028 9027 7642

Weir Control / River Warden

Tel: 028 9031 5304

Weir Control

VHF Channel 71 
Callsign "Lagan Weir"

Belfast Harbour

Harbour Office
Corporation Square
Belfast BT1 3AL
+44 28 9055 4422

belfast-harbour.co.uk

