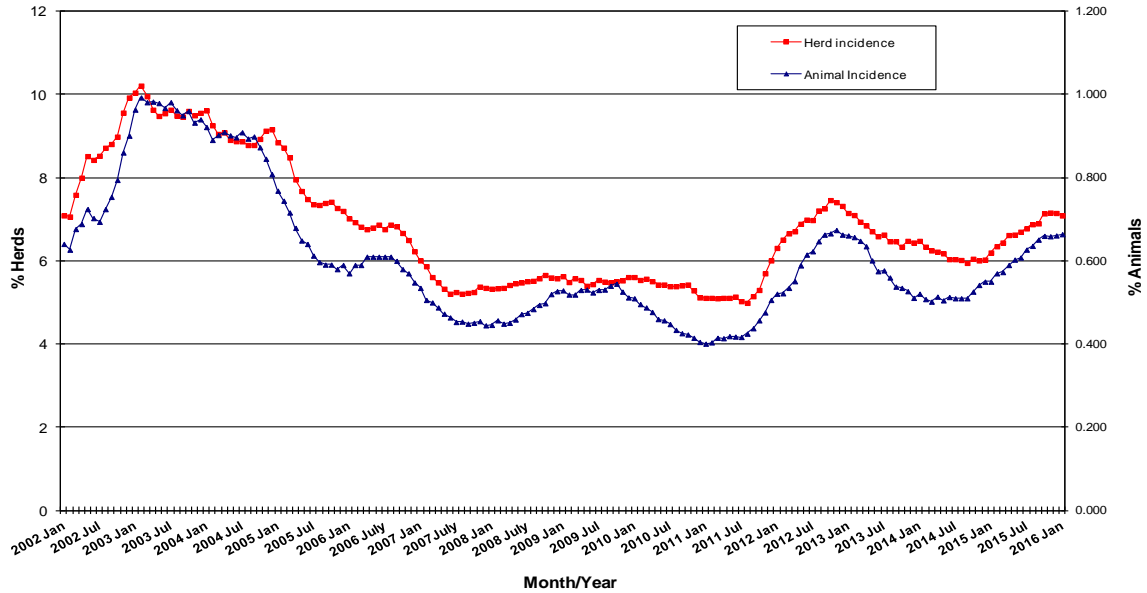
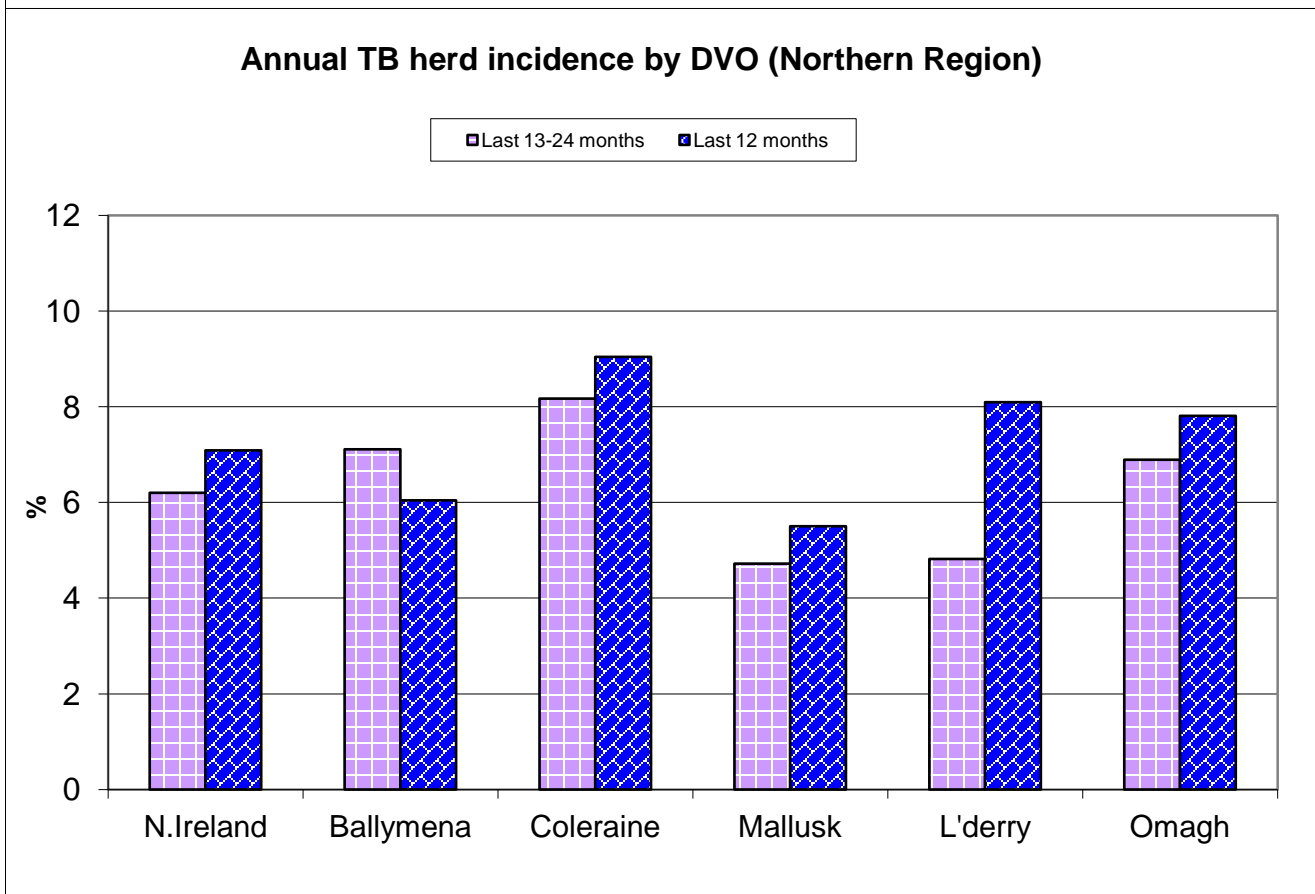
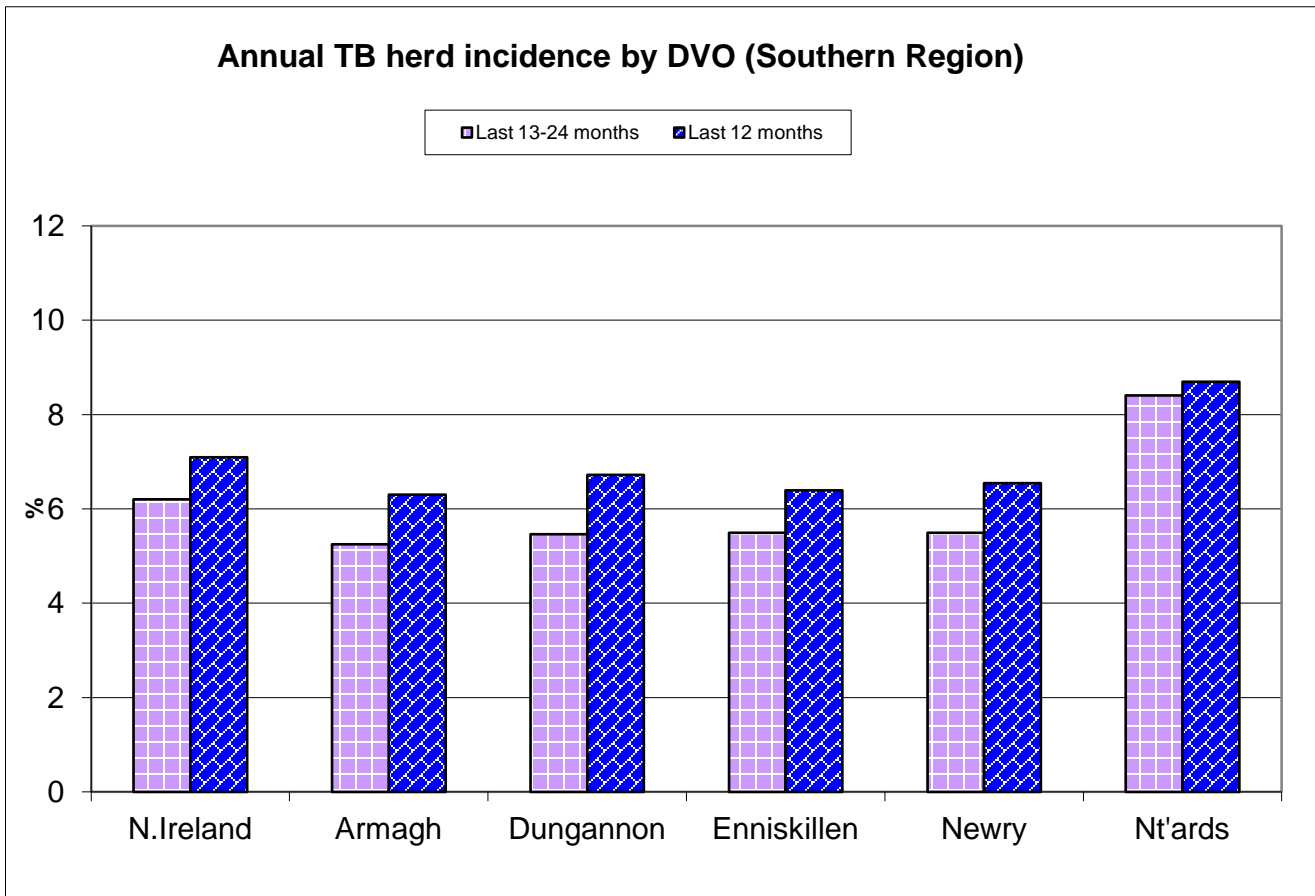


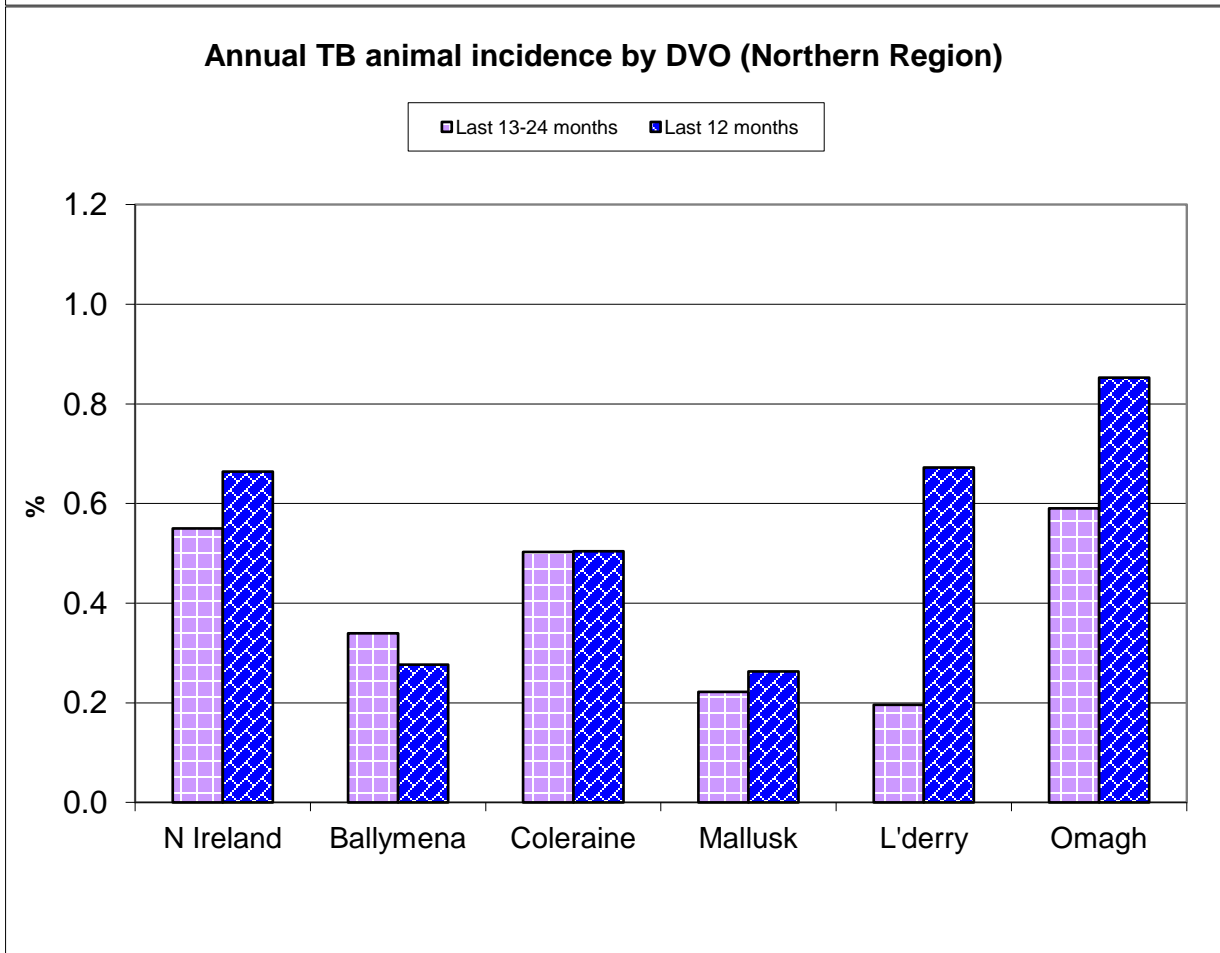
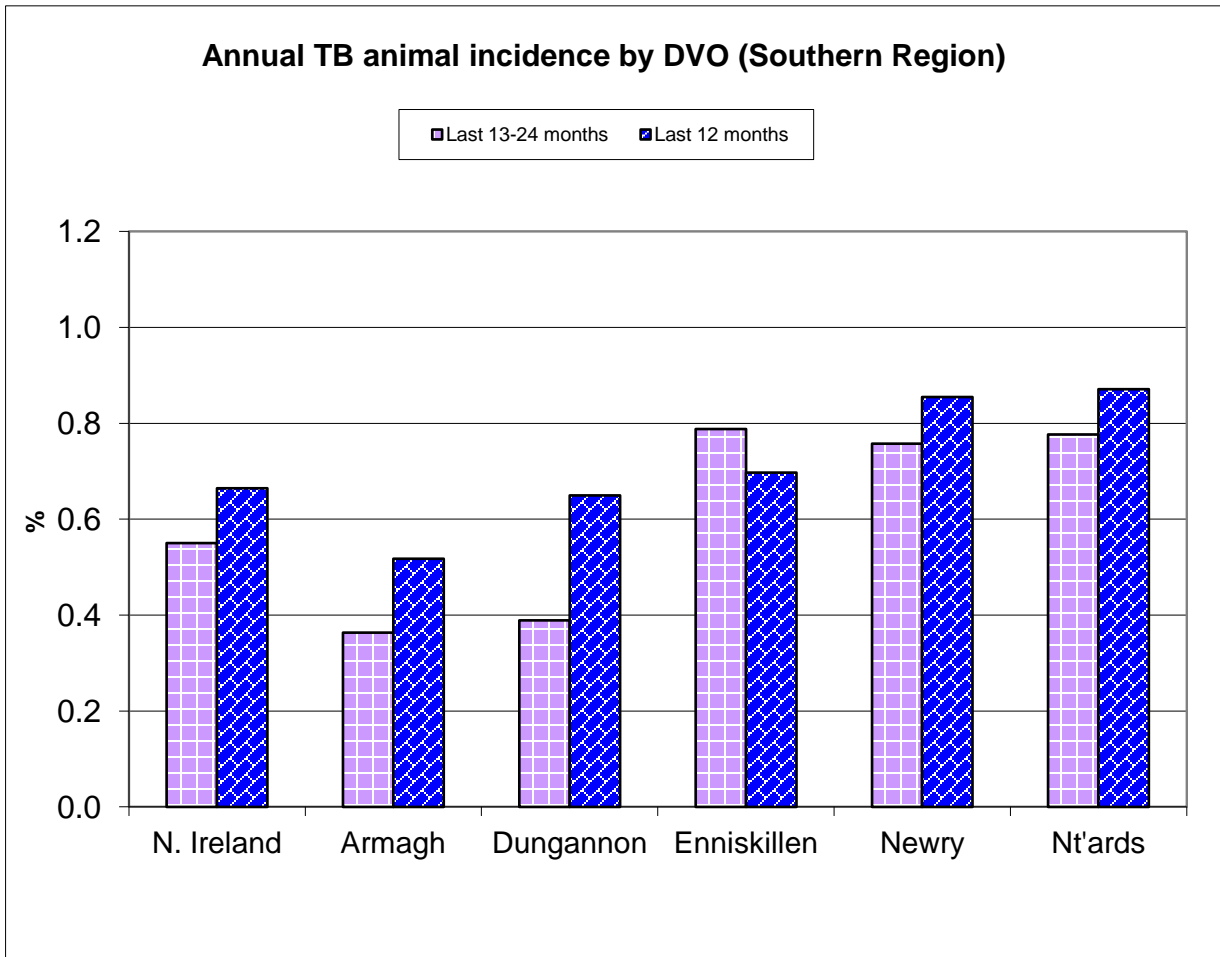
Tuberculosis: Statistics for January 2016

Tests Completed	Herds	Number of herds tested (any test), by DVO	Cumulative Statistics	
		Number of herds with herd-level test, by DVO	Cumulative Statistics	
		Number of herds with any risk test, by DVO		
		Number of herds with herd-level risk test, by DVO		
		Number of herds with herd-level restricted test, by DVO		
	Animals	Total number of tests performed, by DVO	Cumulative Statistics	
		Total number of animals tests, by DVO	Cumulative Statistics	
		Total number of restricted herd tests, by DVO	Number of animals tested	
		Total number of herd tests, by DVO	Number of animals tested	
		Total number of individual tests, by DVO	Number of animals tested	
Total number of animals tested, by DVO				
Summary Statistics	Herds with TB reactors during month, by DVO	Cumulative Statistics	APT	
	Number of new reactor herds, by DVO	Cumulative Statistics	Negative-in-contacts	
	Number of new reactor animals, by DVO		Reactor removal times	
	Herd Prevalance			
	Herd Incidence			
	Animal Incidence			
	Number of reactor animals by month and by DVO			
	Number of new reactor herds by month and by DVO			
	Total number of all reactor herds by DVO			
Summary Charts	Current Animal Incidence Chart	Monthly TB reactors chart	Yearly Confirmed Herd Prevalence	
	Yearly Animal Incidence Chart	New TB reactor herds	Current Confirmed Herd Prevalence	
	Current Herd Incidence Chart	TB Herd & Animal Incidence		
	Yearly Herd Incidence Chart			

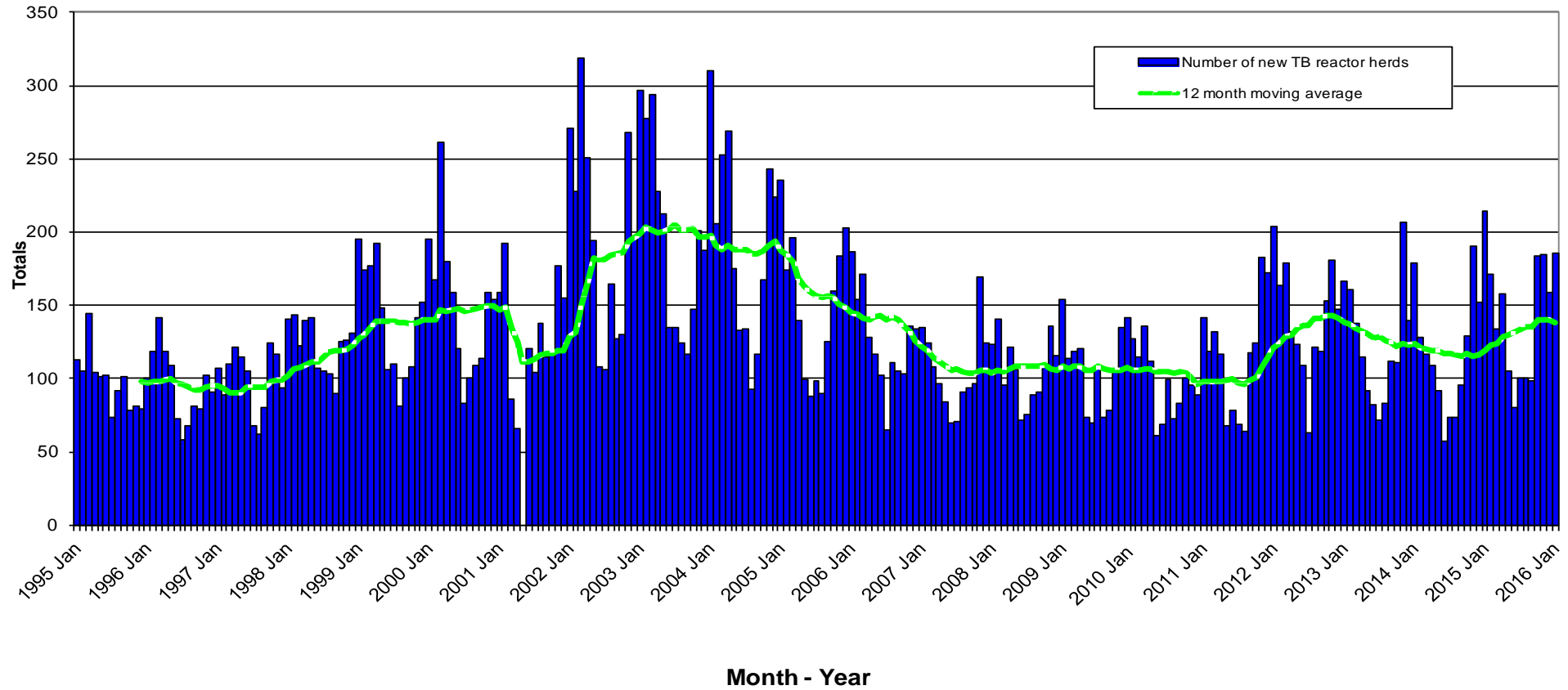
TB Herd and Animal Incidence:
 (12 month moving average: January 2002 to January 2016)



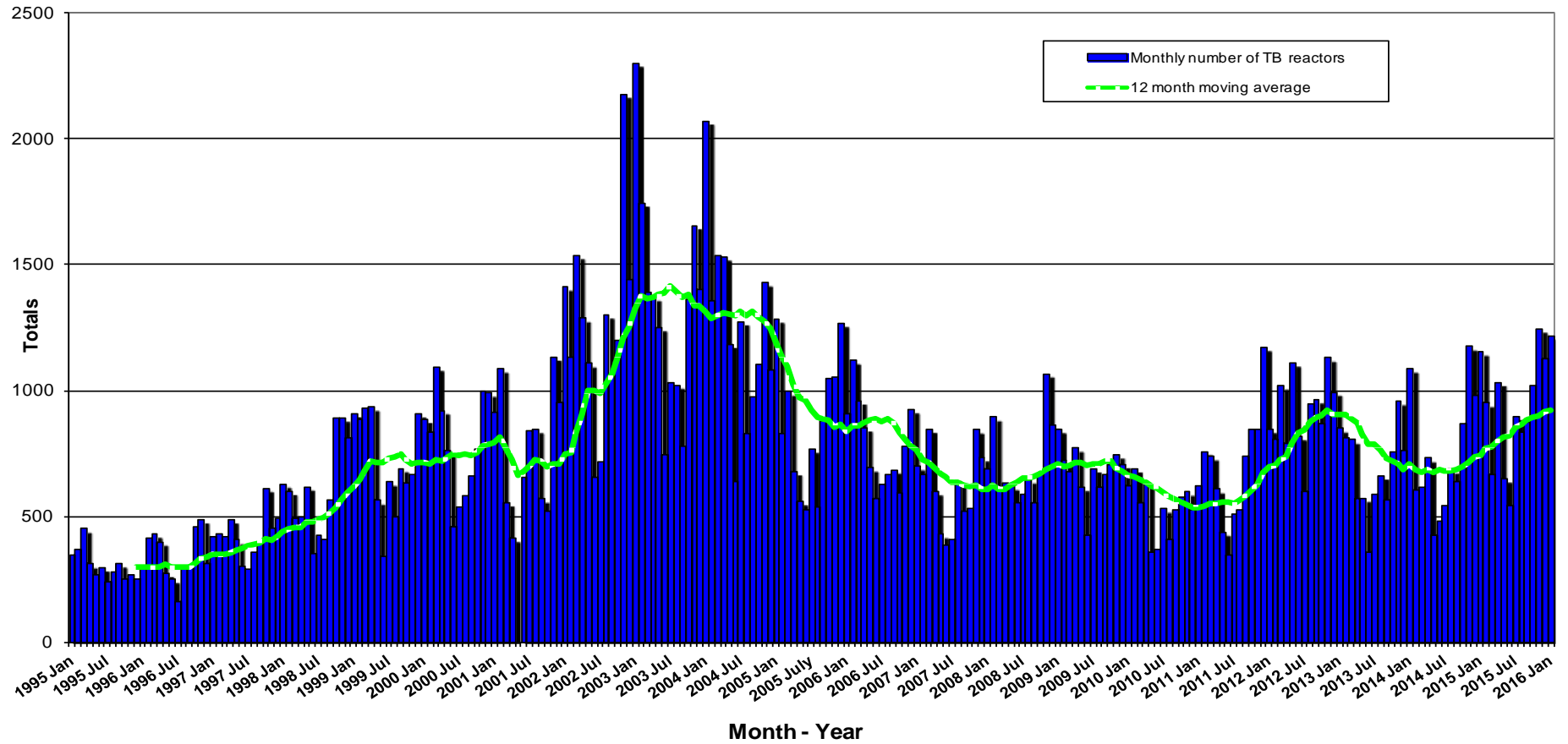




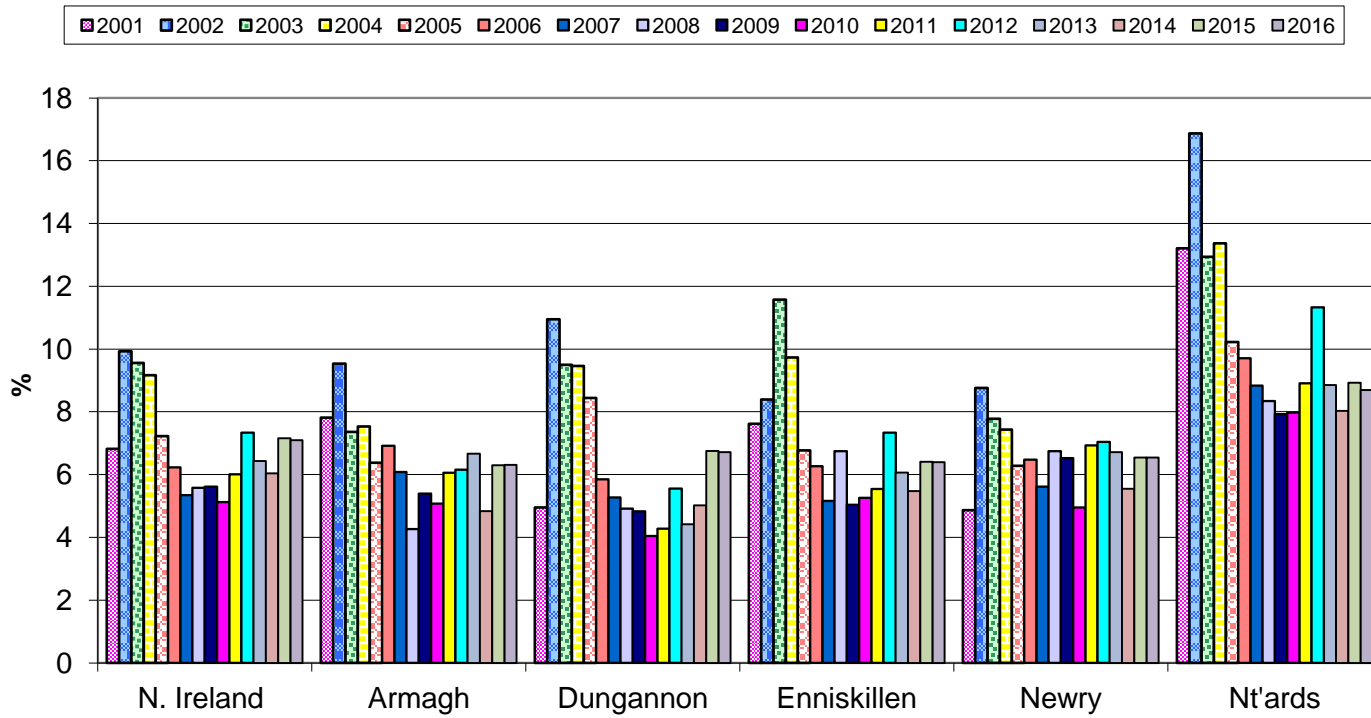
New TB Reactor Herds: January 1995 to January 2016



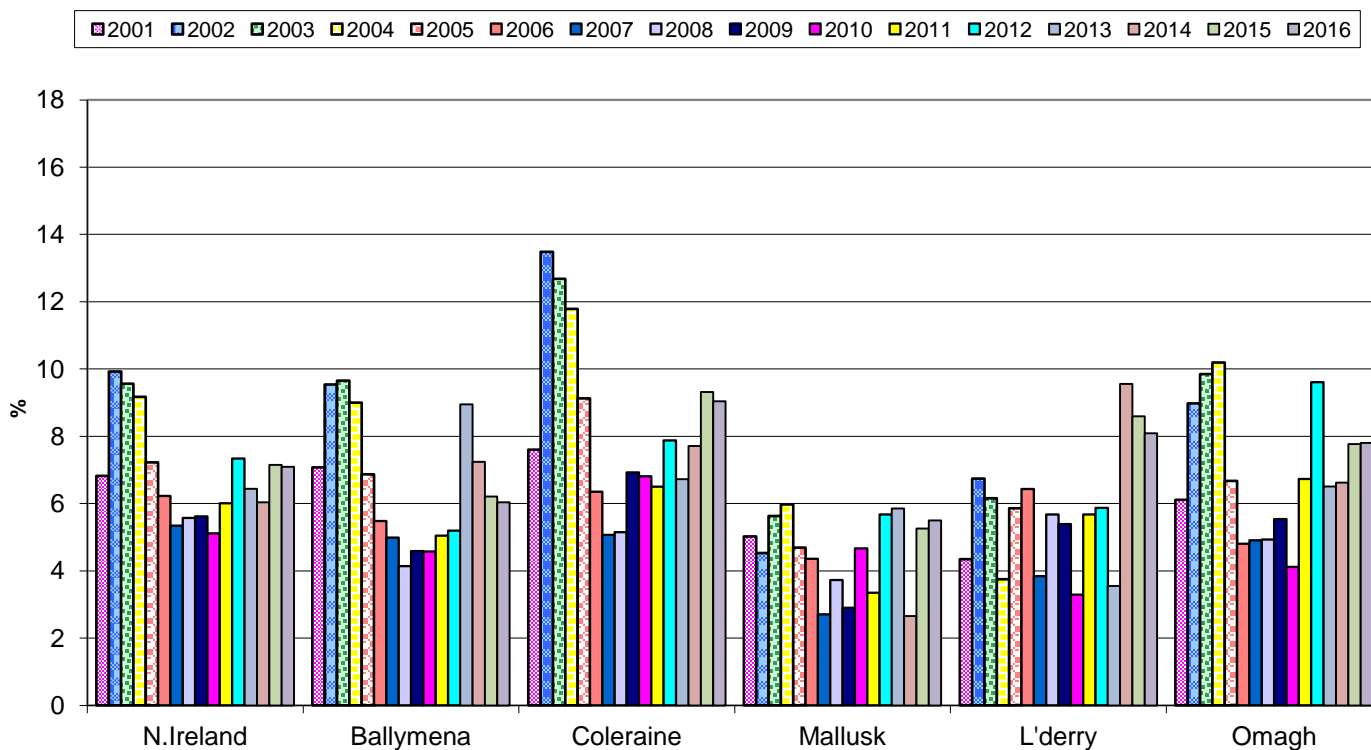
TB Reactors: January 1995 to January 2016

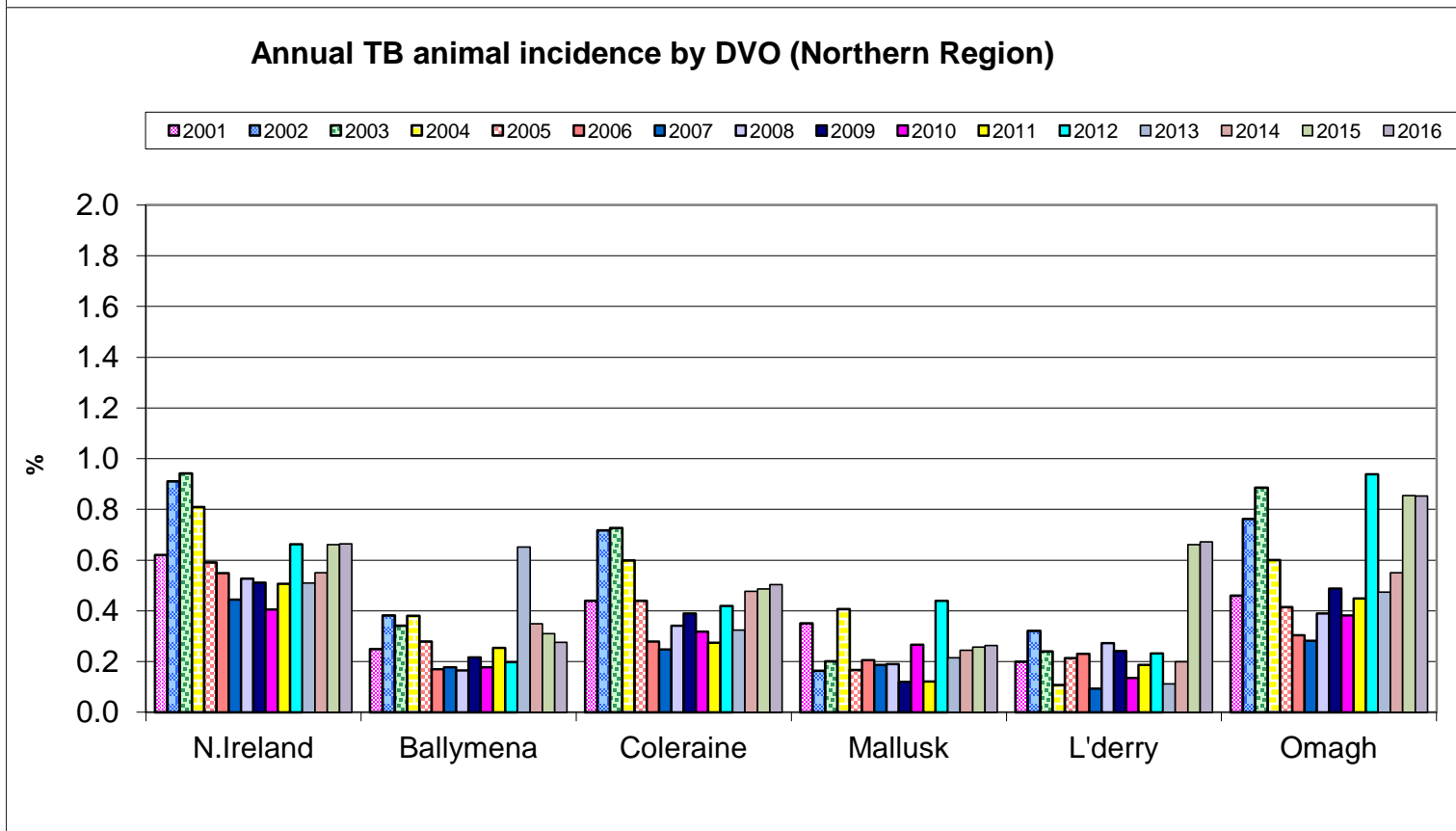
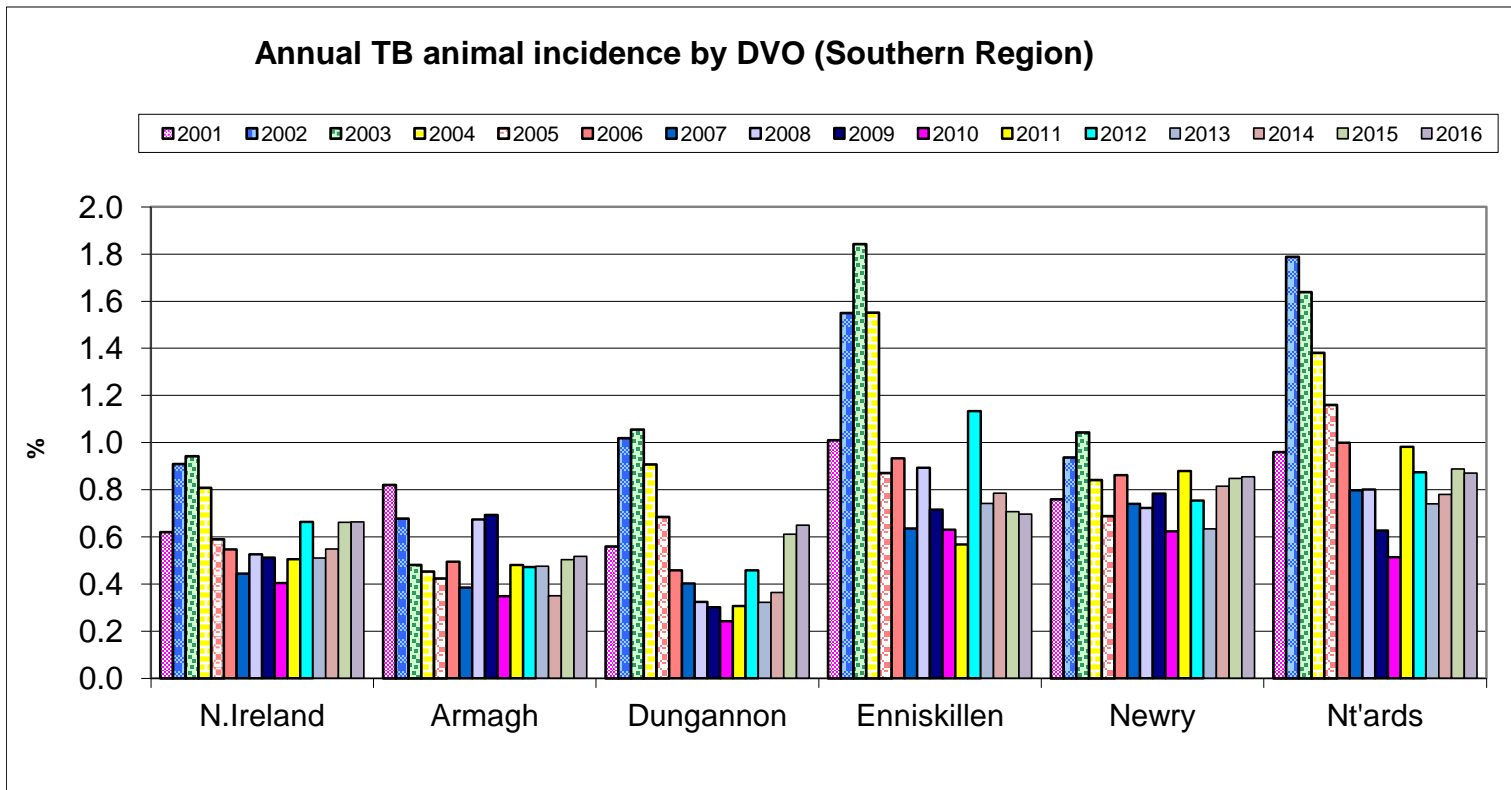


Annual TB herd incidence by DVO (Southern Region)

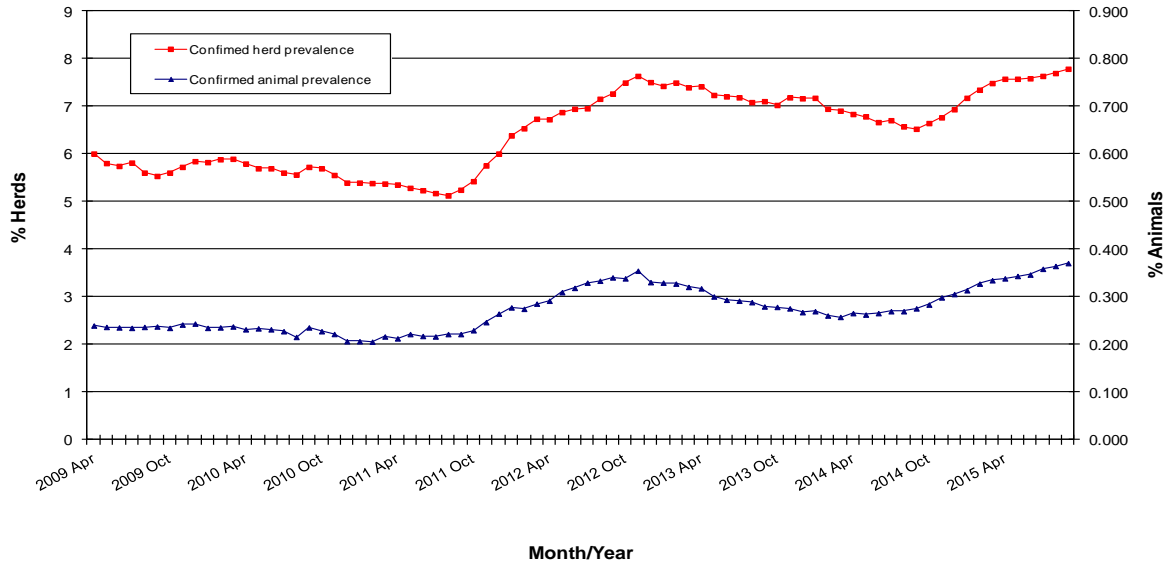


Annual TB herd incidence by DVO (Northern Region)

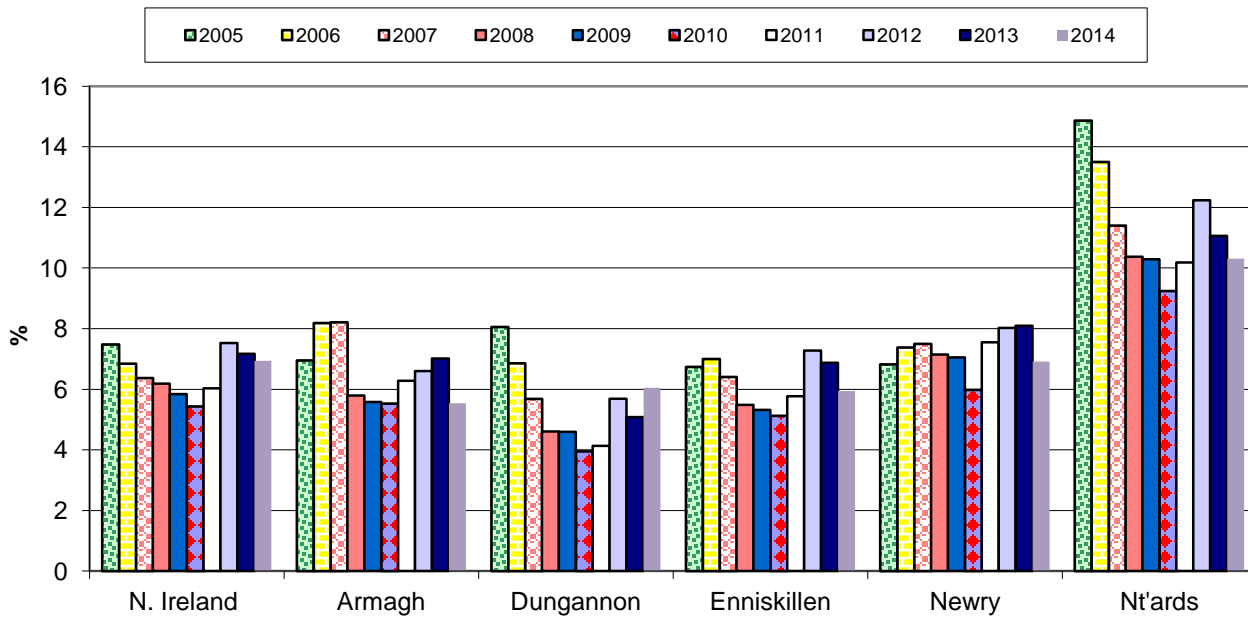




**TB Confirmed Herd^ and Animal Prevalence:
(12 month moving average: April 2009 to September 2015)**

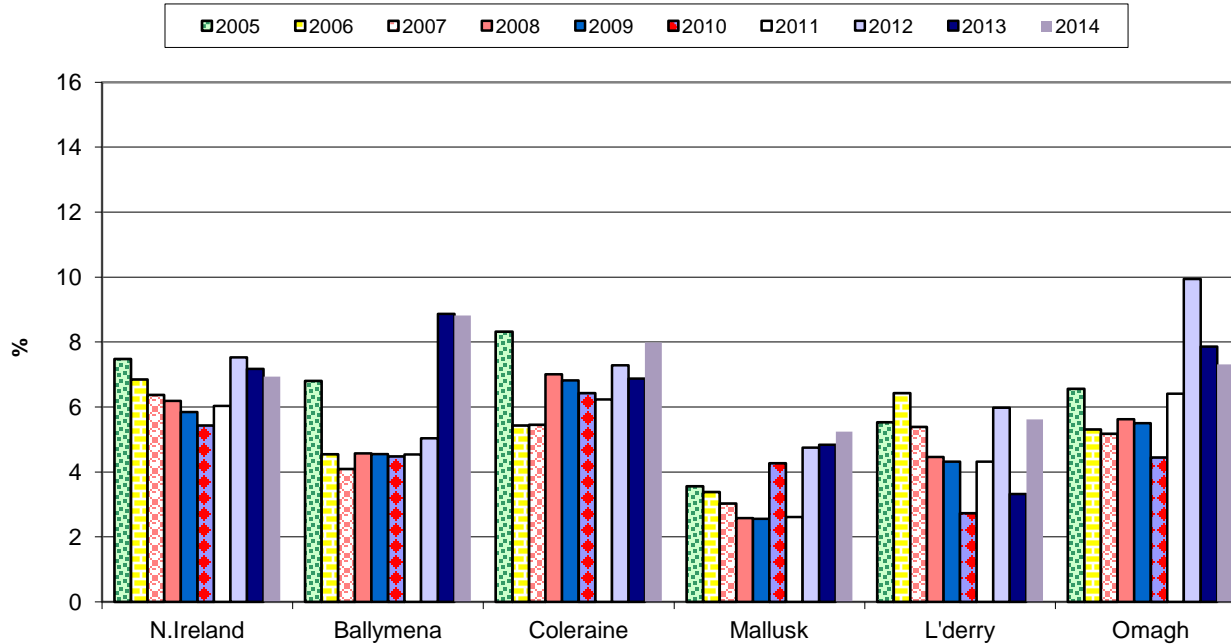


**Annual confirmed TB herd prevalence by DVO
(Southern Region)**



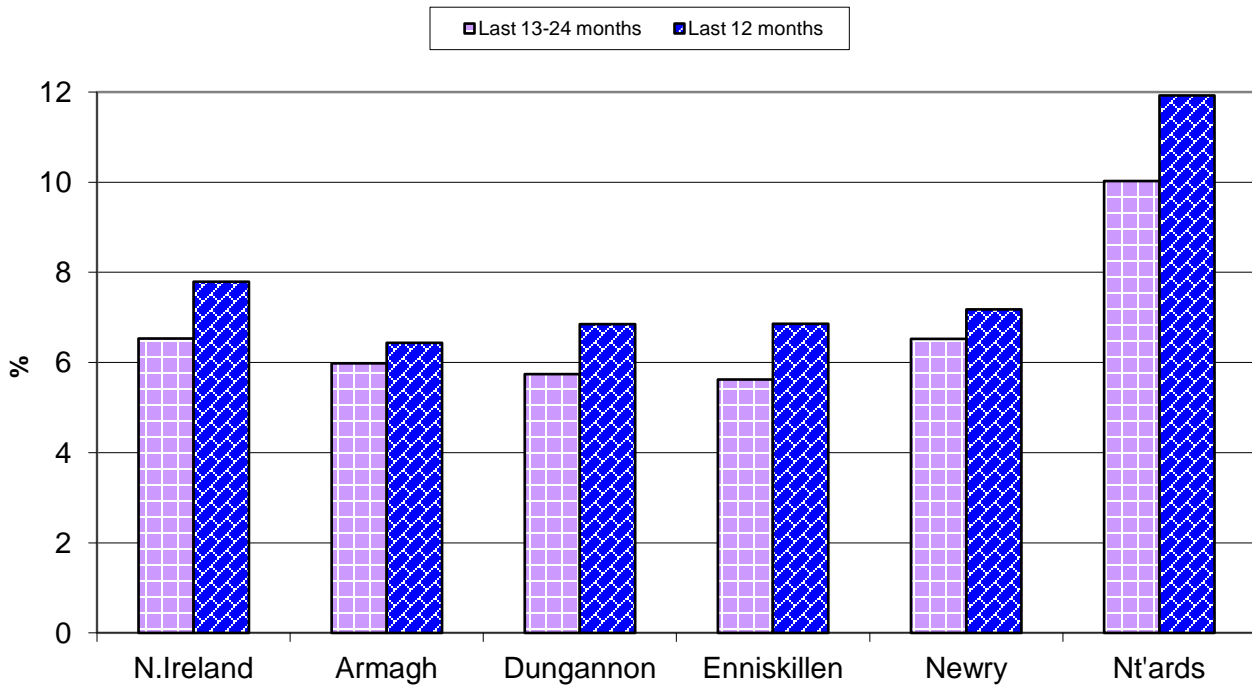
^ numerator includes all herds that had confirmed TB within the 12 month period

**Annual confirmed TB herd prevalence by DVO
(Northern Region)**



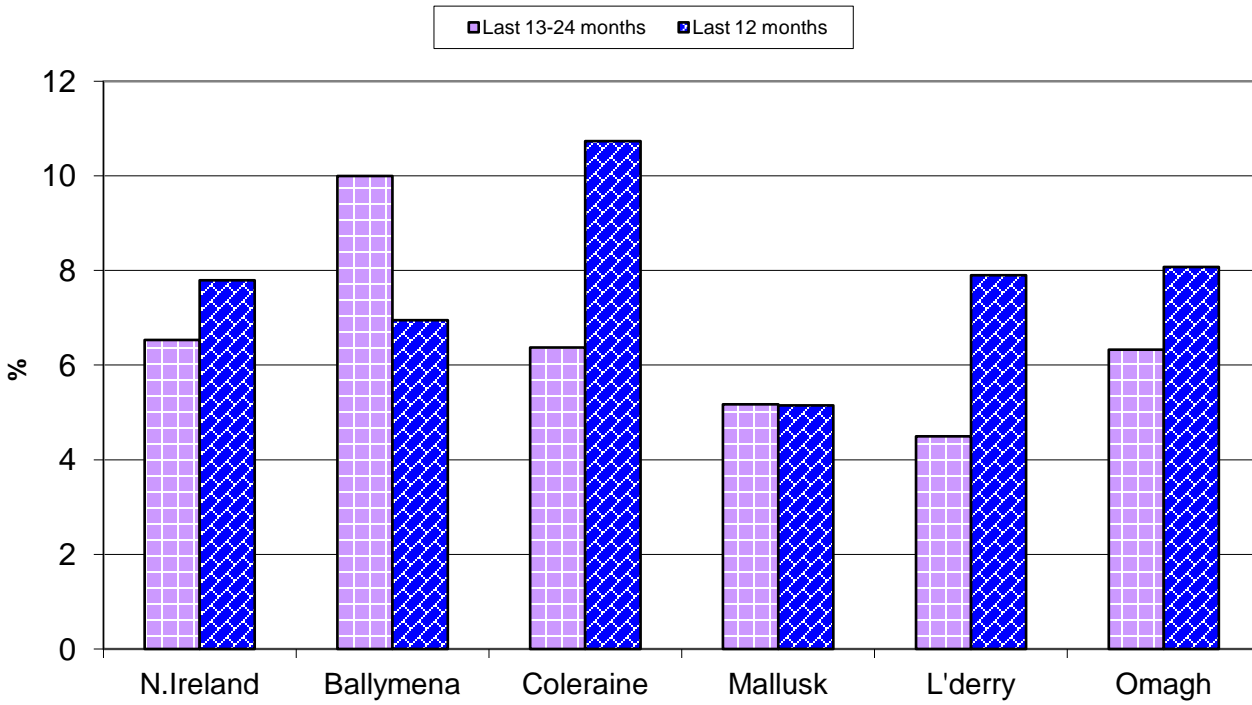
^ numerator includes all herds that had confirmed TB within the 12 month period

Annual confirmed TB herd prevalence[^] by DVO (Southern Region)



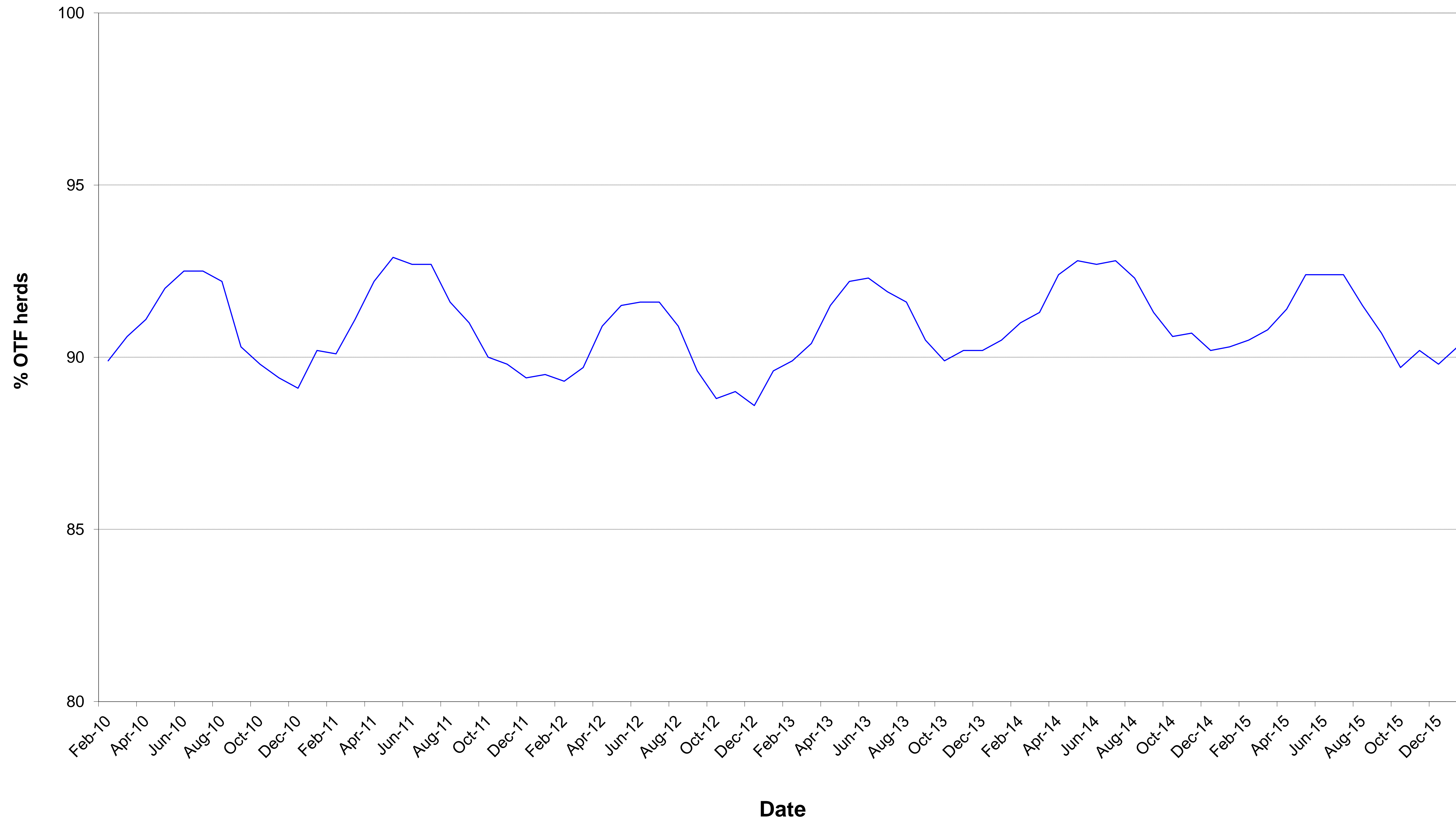
[^] numerator includes all herds that had confirmed TB within the 12 month period

Annual confirmed TB herd prevalence[^] by DVO (Northern Region)



[^] numerator includes all herds that had confirmed TB within the 12 month period

% operational herds that are officially tuberculosis free (OTF herds)



Month = January 2016

Ref.	Total	Armagh	Ballymena	Coleraine	Dungannon	Enniskillen	Mallusk	L'derry	Newry	Nt'ards	Omagh	
d1	No. of herds with TB reactors during month	313	28	22	57	43	22	20	7	32	24	58
d2	No. of new reactor herds during month	186	17	14	26	24	17	16	3	19	15	35
d3	No. of new reactor herds since start of year	186	17	14	26	24	17	16	3	19	15	35
d4	No. of new reactor herds in the previous 12 months	1660	144	85	233	193	198	90	70	243	167	237
d26	No. of new reactor herds in the previous 13-24 months	1432	119	98	206	154	168	76	42	200	160	209
d5	No. of TB reactor animals during month	1217	106	41	171	169	100	42	27	140	175	246
d6	No. of TB reactor animals since start of year	1217	106	41	171	169	100	42	27	140	175	246
d7	No. of reactor animals in the previous 12 months	11065	894	331	1161	1301	1170	381	452	1977	1572	1826
d27	No. of reactor animals in the previous 13-24 months	8906	616	396	1090	753	1289	320	120	1711	1387	1224
d20	Cumulative herd incidence in year (%)	4.82	4.84	5.11	5.39	5.29	4.16	4.64	2.29	3.42	4.32	6.84
d9	Annual herd incidence over the last 12 months (%)	7.09	6.30	6.04	9.05	6.72	6.39	5.50	8.09	6.54	8.69	7.81
d28	Annual herd incidence over the last 13-24 months (%)	6.20	5.25	7.11	8.17	5.46	5.49	4.72	4.82	5.49	8.41	6.89
d38	2015 Herd Incidence (%)	7.15	6.29	6.21	9.31	6.75	6.41	5.26	8.59	6.54	8.92	7.77
d30	2014 Herd Incidence (%)	6.03	4.84	7.24	7.71	5.02	5.48	5.24	4.83	5.55	8.03	6.62
d16	2013 Herd Incidence (%)	6.44	6.66	8.94	6.72	4.41	6.06	5.85	3.55	6.72	8.86	6.51
d10	2012 Herd Incidence (%)	7.34	6.15	5.19	7.88	5.55	7.34	5.67	5.87	7.04	11.33	9.61
d11	2011 Herd Incidence (%)	6.00	6.05	5.05	6.51	4.28	5.54	3.35	5.68	6.92	8.91	6.73
d21	Cumulative animal incidence in year (%)	0.376	0.349	0.162	0.354	0.484	0.421	0.128	0.211	0.343	0.493	0.623
d12	Annual animal incidence over the last 12 months (%)	0.664	0.517	0.276	0.504	0.649	0.697	0.263	0.672	0.855	0.871	0.853
d29	Annual animal incidence over the last 13-24 months (%)	0.550	0.364	0.340	0.503	0.389	0.788	0.222	0.196	0.757	0.777	0.590
d39	2015 Animal Incidence (%)	0.661	0.504	0.310	0.486	0.612	0.707	0.256	0.661	0.848	0.889	0.855
d31	2014 Animal Incidence (%)	0.550	0.350	0.349	0.476	0.364	0.786	0.244	0.199	0.815	0.781	0.551

d15	2013 Animal Incidence (%)	0.510	0.476	0.652	0.324	0.323	0.742	0.214	0.112	0.634	0.741	0.474
d13	2012 Animal Incidence (%)	0.663	0.473	0.198	0.419	0.459	1.133	0.439	0.232	0.754	0.875	0.938
d14	2011 Animal Incidence (%)	0.506	0.481	0.254	0.274	0.307	0.567	0.122	0.187	0.880	0.982	0.449
d34	APT during current month	3.74	3.47	1.62	3.53	4.81	4.20	1.27	2.11	3.41	4.90	6.21
d22	APT since start of year	3.74	3.47	1.62	3.53	4.81	4.20	1.27	2.11	3.41	4.90	6.21
d17	Current 12 month moving average APT	4.09	3.49	1.85	2.92	4.57	4.47	1.93	4.51	5.30	4.94	5.36
d40	2015 APT	4.06	3.37	2.08	2.80	4.31	4.46	1.88	4.51	5.33	5.06	5.38
d32	2014 APT	3.55	2.39	2.18	3.24	2.78	5.24	1.79	1.58	5.08	4.64	3.65
d18	2013 APT	3.27	3.14	4.53	2.20	2.42	4.90	1.64	0.86	3.87	4.33	3.05
d19	2012 APT	4.21	3.17	1.52	2.90	3.37	7.17	3.37	1.68	4.57	4.92	5.67
d42	2011 APT	3.40	3.27	2.00	1.93	2.35	3.98	0.98	1.45	5.24	5.86	3.25
d23	No. negative in contacts since start of year	42	11	0	0	1	1	0	0	1	0	28
d46	No. negative in contacts over last 12 months	685	67	3	23	63	38	33	9	73	87	289
d41	No. negative in contacts during 2015	755	59	10	23	62	37	45	9	73	95	342
d33	No. negative in contacts during 2014	1060	40	10	100	227	93	29	9	201	35	316
d24	No. negative in contacts during 2013	565	44	74	3	18	83	22	0	49	35	237
d25	No. negative in contacts during 2012	1394	9	0	23	35	79	611	1	133	55	448
d43	No. negative in contacts during 2011	484	12	1	13	19	19	40	0	144	179	57
d37	Reactor removal time 2015	8.9	9.6	9.6	8.9	8.9	8.2	9.6	8.2	9.6	9.6	8.2
d45	Reactor removal time 2014	8.9	9.6	8.9	8.9	8.9	8.9	8.9	8.2	10.3	8.9	8.2
d35	Reactor removal time 2013	8.9	9.6	8.9	8.2	9.6	8.9	9.6	8.9	9.6	9.6	8.2
d47	Reactor removal time 2012	11.6	12.3	12.3	9.6	12.3	10.3	10.3	8.9	11.6	11.6	8.9
D44	Reactor removal time 2011	9.6	13.0	8.2	8.9	8.9	10.3	11.6	8.2	11.6	8.9	8.2
d36	Reactor removal time 2010	11.6	13.7	8.2	8.9	9.6	11.0	8.9	8.2	12.3	12.3	8.9

Tuberculosis: number of reactor herds by month and by DVO in 2016 and unique herd breakdowns during the year

2016		DVO_CODE										
Year	Month	Armagh	Ballymena	Coleraine	Dungannon	Enniskillen	L'Derry	Mallusk	Newry	Nt'Ards	Omagh	Total
2016	1	17	14	26	24	17	3	16	19	15	35	186
2016	2											0
2016	3											0
2016	4											0
2016	5											0
2016	6											0
2016	7											0
2016	8											0
2016	9											0
2016	10											0
2016	11											0
2016	12											0
Total		17	14	26	24	17	3	16	19	15	35	186

Unique Herd Breakdowns		DVO_CODE										
Year	Armagh	Ballymena	Coleraine	Dungannon	Enniskillen	L'Derry	Mallusk	Newry	Nt'Ards	Omagh	Total Herds	
2016	28	22	57	43	22	7	20	32	24	58	313	

Tuberculosis: number of reactor herds by month and by DVO in 2015 and unique herd breakdowns during the year

2015		DVO_CODE										
Year	Month	Armagh	Ballymena	Coleraine	Dungannon	Enniskillen	L'Derry	Mallusk	Newry	Nt'Ards	Omagh	Total
2015	1	18	17	36	25	19	8	13	21	21	36	214
2015	2	8	15	31	13	19	4	8	22	23	28	171
2015	3	14	6	24	12	18	2	6	24	12	16	134
2015	4	16	9	22	18	26	5	5	23	17	17	158
2015	5	9	3	13	10	20	5	6	16	10	13	105
2015	6	8	2	9	12	15	4	5	7	10	8	80
2015	7	8	2	10	10	12	11	3	25	12	7	100
2015	8	8	7	12	8	10	3	4	26	17	5	100
2015	9	6	4	12	20	12	8	3	13	9	11	98
2015	10	19	6	26	23	17	11	5	29	13	35	184
2015	11	15	7	29	24	22	5	15	20	15	33	185
2015	12	16	10	19	19	10	9	14	19	14	29	159
Total		145	88	243	194	200	75	87	245	173	238	1688

Unique Herd Breakdowns		DVO_CODE										
Year	Armagh	Ballymena	Coleraine	Dungannon	Enniskillen	L'Derry	Mallusk	Newry	Nt'Ards	Omagh	Total Herds	
2015	180	106	318	240	243	84	100	308	224	292	2095	

Tuberculosis: number of reactor herds by month and by DVO in 2014 and unique herd breakdowns during the year

2014		DVO_CODE										
Year	Month	Armagh	Ballymena	Coleraine	Dungannon	Enniskillen	L'Derry	Mallusk	Newry	Nt'Ards	Omagh	Total
2014	1	9	20	22	13	18	9	22	24	13	29	179
2014	2	16	19	18	8	13	4	10	22	11	7	128
2014	3	10	12	12	14	11	3	7	19	14	15	117
2014	4	8	4	12	11	15	3	8	16	15	17	109
2014	5	6	9	5	13	14	2	3	13	15	12	92
2014	6	8	2	6	7	13	1	2	11	2	5	57
2014	7	7	2	4	8	5	2	5	18	10	13	74
2014	8	9	3	8	11	12	1	1	12	9	8	74
2014	9	8	2	17	14	11	0	5	13	13	13	96
2014	10	11	6	20	12	14	4	5	15	13	29	129
2014	11	9	10	35	19	27	6	8	22	22	32	190
2014	12	9	12	33	12	14	8	9	18	15	22	152
Total		110	101	192	142	167	43	85	203	152	202	1397

Unique Herd Breakdowns		DVO_CODE										
Year	Armagh	Ballymena	Coleraine	Dungannon	Enniskillen	L'Derry	Mallusk	Newry	Nt'Ards	Omagh	Total Herds	
2014	136	136	229	181	212	51	103	274	201	246	1769	

A herd is defined as being a TB reactor herd if it had at least one TB reactor animal in that month and no TB reactor animals during the previous 12 months.

A TB unique herd breakdown is defined as a herd which has had at least one TB reactor during the specified calendar year irrespective of any TB reactors during the previous calendar year.

Tuberculosis: number of reactor animals by month and by DVO 2016

2016		DVO_CODE										
Year	Month	Armagh	Ballymena	Coleraine	Dungannon	Enniskillen	L'Derry	Mallusk	Newry	Nt'Ards	Omagh	Total
2016	1	106	41	171	169	100	27	42	140	175	246	1217
2016	2											0
2016	3											0
2016	4											0
2016	5											0
2016	6											0
2016	7											0
2016	8											0
2016	9											0
2016	10											0
2016	11											0
2016	12											0
Total		106	41	171	169	100	27	42	140	175	246	1217

Tuberculosis: number of reactor animals by month and by DVO 2015

2015		DVO_CODE										
Year	Month	Armagh	Ballymena	Coleraine	Dungannon	Enniskillen	L'Derry	Mallusk	Newry	Nt'Ards	Omagh	Total
2015	1	85	78	130	98	129	22	33	125	209	245	1154
2015	2	45	80	116	45	87	29	44	198	132	175	951
2015	3	46	19	120	52	64	7	49	108	59	142	666
2015	4	71	28	83	215	126	39	14	223	141	94	1034
2015	5	51	12	46	45	94	42	33	93	84	150	650
2015	6	94	9	30	40	75	22	10	152	59	51	542
2015	7	19	27	75	170	68	78	40	182	115	124	898
2015	8	150	18	86	52	75	10	10	184	219	29	833
2015	9	22	25	112	91	133	66	32	111	117	165	874
2015	10	92	24	132	120	101	54	11	171	144	171	1020
2015	11	110	24	120	137	123	30	66	175	245	215	1245
2015	12	88	24	70	165	124	48	30	240	82	264	1135
Total		873	368	1120	1230	1199	447	372	1962	1606	1825	11002

Tuberculosis: number of reactor animals by month and by DVO 2014

2014		DVO_CODE										
Year	Month	Armagh	Ballymena	Coleraine	Dungannon	Enniskillen	L'Derry	Mallusk	Newry	Nt'Ards	Omagh	Total
2014	1	53	91	62	42	121	25	65	253	212	162	1086
2014	2	38	56	62	37	66	9	29	157	82	68	604
2014	3	33	51	29	77	106	10	17	114	86	91	614
2014	4	36	10	62	38	144	9	36	132	187	78	732
2014	5	18	23	35	48	70	6	8	114	69	34	425
2014	6	49	44	64	22	94	2	10	74	61	60	480
2014	7	51	17	19	44	66	6	12	157	104	70	546
2014	8	72	11	54	65	131	5	2	152	120	75	687
2014	9	29	10	99	43	119	1	39	95	117	84	636
2014	10	81	12	159	43	77	28	73	122	85	191	871
2014	11	54	45	193	147	181	6	38	220	179	112	1175
2014	12	70	39	184	91	106	16	23	249	88	116	982
Total		584	409	1022	697	1281	123	352	1839	1390	1141	8838

**A TB reactor animal is defined as an animal where the manual interpretation field for a skin test is positive ('P') with the first test date being taken as the time at which the animal became a reactor.
Animals with lesions at routine slaughter ('LRS') are not taken into account.**

Month = January 2016

Ref.		Total	Armagh	Ballymena	Coleraine	Dungannon	Enniskillen	Mallusk	L'derry	Newry	Nt'ards	Omagh
b16	No. herds with any test completed in month	4504	436	321	549	542	476	400	165	640	386	589
b17	No. herds with any test, from start of year	4504	436	321	549	542	476	400	165	640	386	589
b29	All herds with any test, from start of year	4651	443	335	575	567	490	411	173	649	398	610
b18	No. herds with any test, from start of year (no cattle)	147	7	14	26	25	14	11	8	9	12	21
b19	No. herds with herd test completed in month	3861	351	274	482	454	409	345	131	556	347	512
b20	No. herds with herd test, from start of year	3861	351	274	482	454	409	345	131	556	347	512
b30	All herds with herd test, from start of year	4008	358	288	508	479	423	356	139	565	359	533
b21	No. herds with herd test, from start of year (no cattle)	147	7	14	26	25	14	11	8	9	12	21
b22	No. herds with herd test during last 12 months	23411	2284	1407	2576	2873	3099	1636	865	3714	1921	3036
b31	No. herds with herd test during last 13-24 months	23101	2266	1379	2521	2818	3058	1609	872	3641	1903	3034
b39	No. herds with herd test during 2015	23604	2304	1417	2610	2875	3121	1654	873	3748	1939	3063
b32	No. herds with herd test during 2014	23149	2274	1395	2490	2829	3049	1621	890	3658	1892	3051
b28	No. herds with herd test during 2013	22979	2237	1353	2530	2833	3054	1590	873	3618	1863	3028
b23	No. herds with herd test during 2012	23093	2244	1369	2513	2831	3067	1623	869	3638	1880	3059
b24	No. herds with herd test during 2011	23085	2197	1387	2567	2807	3068	1644	881	3668	1807	3059
b25	No. herds with any risk test completed	1853	176	124	242	215	201	116	61	270	163	285
b26	No. herds with herd risk test completed	1169	98	78	166	112	143	58	23	174	120	197
b27	No. herds with restricted herd test completed	729	74	31	101	93	58	50	32	110	90	90

Month = January 2016

Ref	Total	Armagh	Ballymena	Coleraine	Dungannon	Enniskillen	Mallusk	L'derry	Newry	Nt'ards	Omagh	
c1	Total number of tests in current month	5112	499	348	636	652	497	456	196	722	423	683
c2	Total number of tests from start of year	5112	499	348	636	652	497	456	196	722	423	683
c3	No. tests during the same time period in the previous year	5627	565	347	726	705	689	460	179	758	472	726
c4	% change between years	-10.1	-13.2	0.3	-14.2	-8.1	-38.6	-0.9	8.7	-5.0	-11.6	-6.3
c5	No. tests in the previous 12 months	45072	4785	2611	5253	5606	5529	3004	1601	6949	4021	5713
c6	No. animal tests in current month	325342	30515	25286	48502	35100	23782	33017	12820	41007	35696	39617
c7	No. animal tests from start of year	325342	30515	25286	48502	35100	23782	33017	12820	41007	35696	39617
c8	No. animal tests during the same time period in the previous year	328030	33379	23472	50758	35845	30675	34221	11712	34929	34601	38438
c9	% change between years	-0.8	-9.4	7.2	-4.7	-2.1	-29.0	-3.6	8.6	14.8	3.1	3.0
c10	No. animal tests in previous 12 months	2708345	256244	178770	397913	284397	261946	197161	100145	372857	318409	340503
c11	No. cattle eligible for TB testing	1574242	154538	110861	208460	177759	153523	135798	61815	209419	164314	197755
c12	No. cattle herds eligible for TB testing	26097	2588	1552	2859	3147	3353	1013	1863	4147	2149	3426
c13	No. restricted herd tests during month	729	74	31	101	93	58	50	32	110	90	90
c14	No. animals tested	113385	10749	5228	20104	12364	5936	9130	5693	16405	13779	13997
c15	No. herd tests during month	3861	351	274	482	454	409	345	131	556	347	512
c16	No. animals tested	321988	30274	25085	48162	34660	23637	32561	12688	40479	35483	38959
c17	No. individual tests during month	1251	148	74	154	198	88	111	65	166	76	171
c18	No. animals tested	3354	241	201	340	440	145	456	132	528	213	658
c23	No. animals TB tested since start of year	324021	30358	25243	48309	34904	23741	32904	12784	40847	35526	39465
c19	No. animals TB tested in previous 12 months	1665458	172755	119724	230413	200342	167832	144961	67251	231248	180420	214088
c24	No. animals TB tested in previous 13-24 months	1618535	169457	116566	216899	193527	163646	144098	61231	225888	178595	207395
c26	No. animals TB tested in 2015	1662526	173128	118768	230646	200836	169615	145087	67585	230540	180664	213469
c25	No. animals TB tested in 2014	1607660	166774	117083	214490	191534	163019	143992	61765	225643	177960	207187
c22	No. animals TB tested in 2013	1620055	172322	114133	214509	197072	166287	140842	62228	224389	180893	210490
c20	No. animals TB tested in 2012	1643626	171497	112484	213785	196069	168531	143005	64217	229674	181839	219225
c21	No. animals TB tested in 2011	1607171	166267	113201	216348	189655	159143	140627	64863	225656	178272	210299

Month = January 2016

Ref		Total	Armagh	Ballymena	Coleraine	Dungannon	Enniskillen	Mallusk	L'derry	Newry	Nt'ards	Omagh
f1	No. of Officially Tuberculosis Free Herds (OTF)	26405	2561	1637	2914	3145	3459	1948	1100	4207	2009	3425
f2	No. of Officially Tuberculosis Suspended Herds (OTS)	1166	195	45	144	132	74	130	25	189	85	147
f3	No. of Officially Tuberculosis Withdrawn Herds (OTW)	1664	175	75	220	234	120	124	56	253	181	226
f4	% herds that are OTF	90.3	87.4	93.2	88.9	89.6	94.7	88.5	93.1	90.5	88.3	90.2
f5	% herds that are OTS	4.0	6.7	2.6	4.4	3.8	2.0	5.9	2.1	4.1	3.7	3.9
f6	% herds that are OTW	5.7	6.0	4.3	6.7	6.7	3.3	5.6	4.7	5.4	8.0	6.0

		Month = September 2015										
		(Data lagged by 4 months)										
Ref		Total	Armagh	Ballymena	Coleraine	Dungannon	Enniskillen	Mallusk	L'derry	Newry	Nt'ards	Omagh
e19	Num. TB culture positive animals that were not TB reactors in last 12 months	657	58	41	77	74	29	49	15	114	111	89
e20	Num. TB culture positive animals that were not TB reactors in last 13-24 months	529	67	40	44	73	38	41	13	93	76	44
e6	Num. TB culture positive animals that were not TB reactors in 2014	575	68	37	54	66	38	53	12	100	80	67
e2	Num. TB culture positive animals that were not TB reactors in 2013	583	63	33	32	98	28	30	7	131	92	69
e3	Num. TB culture positive animals that were not TB reactors in 2012	600	62	32	48	66	32	31	9	155	91	74
e4	Num. TB culture positive animals that were not TB reactors in 2011	558	69	40	42	47	31	25	5	154	77	68
e5	Num. TB culture positive animals that were not TB reactors in 2010	567	86	36	51	54	37	36	5	108	95	59
e21	No. herds with TB culture positive animals that were not TB reactors in last 12 months	413	41	25	60	49	21	26	12	63	69	47
e22	No. herds with TB culture positive animals that were not TB reactors in last 13-24 months	376	52	23	30	53	27	26	11	64	58	32
e12	No. herds with TB culture positive animals that were not TB reactors in 2014	372	47	25	37	48	27	27	10	66	51	34
e8	No. herds with TB culture positive animals that were not TB reactors in 2013	381	50	14	30	46	20	20	5	83	60	53
e9	No. herds with TB culture positive animals that were not TB reactors in 2012	401	46	17	35	48	25	23	9	82	67	49
e10	No. herds with TB culture positive animals that were not TB reactors in 2011	363	48	17	31	32	27	17	3	87	56	45
e11	No. herds with TB culture positive animals that were not TB reactors in 2010	379	50	17	36	36	32	25	5	77	61	40
e23	% of TB animals that were TB culture positive that were not TB reactors in last 12 months	5.8	6.9	9.5	5.5	6.4	2.3	13.4	3.2	5.5	6.9	5.3
e24	% of TB animals that were TB culture positive that were not TB reactors in last 13-24 months	6.0	9.5	5.8	5.8	11.3	3.0	12.2	12.0	5.5	5.0	4.1
e18	% of TB animals that were TB culture positive that were not TB reactors in 2014	6.1	10.4	8.3	5.0	8.7	2.9	13.1	8.9	5.2	5.4	5.5
e14	% of TB animals that were TB culture positive that were not TB reactors in 2013	6.6	7.1	4.2	4.4	13.4	2.2	9.0	9.1	8.4	6.4	6.5
e15	% of TB animals that were TB culture positive that were not TB reactors in 2012	5.2	7.1	12.5	5.1	6.8	1.6	4.7	5.7	8.2	5.4	3.5
e16	% of TB animals that were TB culture positive that were not TB reactors in 2011	6.4	7.9	12.2	6.6	7.5	3.3	12.8	4.0	7.2	4.2	6.7
e17	% of TB animals that were TB culture positive that were not TB reactors in 2010	8.1	12.9	15.3	7.1	10.4	3.7	8.9	5.6	7.1	9.6	7.2

		Month = September 2015										
		(Data lagged by 4 months)										
Ref		Total	Armagh	Ballymena	Coleraine	Dungannon	Enniskillen	Mallusk	L'derry	Newry	Nt'ards	Omagh
g31	No. of confirmed TB reactors during last 12 months	5404	419	237	804	545	605	199	227	818	743	807
g32	No. of confirmed TB reactors during last 13-24 months	3871	299	395	379	275	490	128	59	609	725	512
g6	No. of confirmed TB reactors 2014	4346	294	229	591	392	561	156	84	725	722	592
g2	No. of confirmed TB reactors 2013	3765	377	422	373	255	520	116	40	541	636	485
g3	No. of confirmed TB reactors 2012	4836	339	131	416	429	821	241	83	698	730	948
g4	No. of confirmed TB reactors 2011	3867	382	134	294	230	495	72	73	809	818	560
g5	No. of confirmed TB reactors 2010	2828	206	101	378	203	455	197	36	517	398	337
g33	Total animals with confirmed TB during last 12 months	6061	477	278	881	619	634	248	242	932	854	896
g34	Total animals with confirmed TB in last 13-24 months	4400	366	435	423	348	528	169	72	702	801	556
g12	Total animals with confirmed TB in 2014	4921	362	266	645	458	599	209	96	825	802	659
g8	Total animals with confirmed TB in 2013	4348	440	455	405	353	548	146	47	672	728	554
g9	Total animals with confirmed TB in 2012	5436	401	163	464	495	853	272	92	853	821	1022
g10	Total animals with confirmed TB in 2011	4425	451	174	336	277	526	97	78	963	895	628
g11	Total animals with confirmed TB in 2010	3395	292	137	429	257	492	233	41	625	493	396
g35	Confirmed TB animal prevalence in last 12 months (%)	0.371	0.281	0.235	0.393	0.315	0.384	0.172	0.374	0.417	0.477	0.425
g36	Confirmed TB animal prevalence in last 13-24 months (%)	0.276	0.215	0.376	0.200	0.182	0.330	0.119	0.117	0.319	0.451	0.272
g18	Confirmed TB animal prevalence in 2014 (%)	0.306	0.217	0.227	0.301	0.239	0.367	0.145	0.155	0.366	0.451	0.318
g14	Confirmed TB animal prevalence in 2013 (%)	0.268	0.255	0.399	0.189	0.179	0.330	0.104	0.076	0.299	0.402	0.263
g15	Confirmed TB animal prevalence in 2012 (%)	0.331	0.234	0.145	0.217	0.252	0.506	0.190	0.143	0.371	0.452	0.466
g16	Confirmed TB animal prevalence in 2011 (%)	0.275	0.271	0.154	0.155	0.146	0.331	0.069	0.120	0.427	0.502	0.299
g17	Confirmed TB animal prevalence in 2010 (%)	0.214	0.176	0.122	0.203	0.133	0.318	0.169	0.066	0.276	0.284	0.200
g37	No. herds with confirmed TB in last 12 months	1842	149	99	280	197	214	86	70	266	231	250
g38	No. herds with confirmed TB in last 13-24 months	1518	137	139	161	162	172	85	40	238	190	194
g24	No. herds with confirmed TB in 2014	1606	126	123	199	171	181	85	50	253	195	223
g20	No. herds with confirmed TB in 2013	1648	157	120	174	144	210	77	29	293	206	238
g21	No. herds with confirmed TB in 2012	1739	148	69	183	161	223	77	52	292	230	304
g22	No. herds with confirmed TB in 2011	1392	138	63	160	116	177	43	38	277	184	196
g23	No. herds with confirmed TB in 2010	1230	120	62	165	111	157	70	24	218	167	136
g39	Confirmed TB herd prevalence in last 12 months (%)	7.79	6.44	6.95	10.73	6.85	6.86	5.15	7.90	7.18	11.93	8.07
g40	Confirmed TB herd prevalence in last 13-24 months (%)	6.53	5.98	10.00	6.37	5.74	5.62	5.17	4.49	6.52	10.02	6.33

g30	Confirmed TB herd prevalence in 2014 (%)	6.94	5.54	8.82	7.99	6.04	5.94	5.24	5.62	6.92	10.31	7.31
g26	Confirmed TB herd prevalence in 2013 (%)	7.17	7.02	8.87	6.88	5.08	6.88	4.84	3.32	8.10	11.06	7.86
g27	Confirmed TB herd prevalence in 2012 (%)	7.53	6.60	5.04	7.28	5.69	7.27	4.74	5.98	8.03	12.23	9.94
g28	Confirmed TB herd prevalence in 2011 (%)	6.03	6.28	4.54	6.23	4.13	5.77	2.62	4.31	7.55	10.18	6.41
g29	Confirmed TB herd prevalence in 2010 (%)	5.43	5.53	4.47	6.43	3.95	5.12	4.26	2.72	5.98	9.24	4.45

Explanatory Comments for Tuberculosis Statistics - B. Testing Herds

Ref	Data Title	Explanation
B16	No. herds with any test completed in month	Test of any disease status and size (herd or animal-level). Tests with no animals are excluded.
B17	No. herds with any test, from start of year	Test of any disease status and size (herd or animal-level) carried out on a herd since 1st January. Tests with no animals are excluded.
B29	All herds with any test, from start of year	Skin test of any disease status and size (herd or animal-level) carried out on a herd since 1st January. Tests with no animals are included.
B18	No. herds with any test, from start of year (no cattle)	Herd or individual test of any disease status (routine, risk or restricted) where no cattle were recorded at all such tests since 1st January.
B19	No. herds with herd test completed in month	Herd level test of any disease status (routine, risk or restricted) completed during the above month. Tests with no animals are excluded.
B20	No. herds with herd test, from start of year	Herd level test of any disease status (routine, risk or restricted) completed since 1st January. Tests with no animals are excluded.
B30	All herds with herd test, from start of year	Herd level test of any disease status (routine, risk or restricted) completed since 1st January. Tests with no animals are included.
B21	No. herds with herd test, from start of year (no cattle)	Herd level test of any disease status (routine, risk or restricted) where no cattle were recorded at all such herd tests since 1st January.
B22	No. herds with herd test during last 12 months	Herd level test of any disease status (routine, risk or restricted) completed in the 12 month period from the above month. Tests with no animals are excluded.
B31	No. herds with herd test during last 13-24 months	Herd level test of any disease status (routine, risk or restricted) completed in the 13-24 months from the above month. Tests with no animals are excluded.
B39	No. herds with herd test during the year	Herd level test of any disease status (routine, risk or restricted) completed in the calendar year. Tests with no animals are excluded.
B32	No. herds with herd test during the year	Herd level test of any disease status (routine, risk or restricted) completed in the calendar year. Tests with no animals are excluded.
B28	No. herds with herd test during the year	Herd level test of any disease status (routine, risk or restricted) completed in the calendar year. Tests with no animals are excluded.
B23	No. herds with herd test during the year	Herd level test of any disease status (routine, risk or restricted) completed in the calendar year. Tests with no animals are excluded.
B24	No. herds with herd test during the year	Herd level test of any disease status (routine, risk or restricted) completed in the calendar year. Tests with no animals are excluded.
B25	No. herds with any risk test completed	Herd has had a herd or individual level risk test since start of calendar year and number tested > 0.
B26	No. herds with herd risk test completed	Herd has had a herd level risk test since start of calendar year and number tested > 0.
B27	No. herds with restricted herd test completed	Herd has had a restricted herd test (RHT, RH1, RH2) since start of calendar year and number tested > 0.

Explanatory Comments for Tuberculosis Statistics - C. Testing Animals

Ref	Data Title	Explanation
C1	Total number of tests in current month	Number of herds and individual tests performed in the month stated above. Tests with no animals are excluded.
C2	Total number of tests from start of year	From 1st January. Tests with no animals are excluded.
C3	No. tests during the same time period in the previous year	From 1st January of previous year. Tests with no animals are excluded.
C4	% change between years	Difference between the number of tests carried out during the current year and the number carried out in the previous expressed as a percentage.
C5	No. tests in the previous 12 months	Last 12 month period from the above month. Tests with no animals are excluded.
C6	No. animal tests in current month	Animal test = a count of the number of animals tested within each herd or individual test. Some animals may have been tested multiple times during the year.
C7	No. animal tests from start of year	Number of animal tests carried out since 1st January.
C8	No. animal tests during the same time period in the previous year	Number of animal tests carried out from 1st January in the previous year over the same time interval as recorded for the current year.
C9	% change between years	Difference between the number of animal tests during the current year and the number carried out in the previous expressed as a percentage.
C10	No. animal tests in previous 12 months	Last 12 month period from the above month.
C11	No. cattle eligible for TB testing	Based on the average number of animals presented at TB herd tests over last 4 years.
C12	No. cattle herds eligible for TB testing	Based on cattle being presented for a TB herd tests over last 4 years. Herds with '0' cattle are excluded.

C13	No. restricted herd tests during month	All restricted herd tests (RHT, RH1 and RH2) carried out during the above month.
C14	No. animals tested	Total of the animals reported as being tested within restricted herd tests (RHT, RH1, RH2) during the above month.
C15	No. herd tests during month	Total of the animals reported as being tested within all herd tests during the above month.
C16	No. animals tested	Total of the animals reported as being tested within all herd tests during the above month.
C17	No. individual tests during month	Total of the animals reported as being tested within all individual tests during the above month.
C18	No. animals tested	Total of the animals reported as being tested within all individual tests during the above month.
C23	No. animals TB tested since start of year	Animals identified as having had at least one TB skin test since the start of the calendar year. Due to the same animals being sampled in different DVO areas, the 'Total' is not the sum of the DVO figures.
C19	No. animals TB tested in previous 12 months	Animals identified as having had at least one TB skin test during the last 12 month period from the above month. Due to the same animals being sampled in different DVO areas, the 'Total' is not the sum of the DVO figures.
C24	No. animals TB tested in previous 13-24 months	Animals identified as having had at least one TB skin test during the last 13-24 months from the above month. Due to the same animals being sampled in different DVO areas, the 'Total' is not the sum of the DVO figures.
C26	No. animals TB tested in the year	Animals identified as having had at least one TB skin test during the calendar year. Due to the same animals being sampled in different DVO areas, the 'Total' is not the sum of the DVO figures.
C25	No. animals TB tested in the year	Animals identified as having had at least one TB skin test during the calendar year. Due to the same animals being sampled in different DVO areas, the 'Total' is not the sum of the DVO figures.
C22	No. animals TB tested in the year	Animals identified as having had at least one TB skin test during the calendar year. Due to the same animals being sampled in different DVO areas, the 'Total' is not the sum of the DVO figures.
C20	No. animals TB tested in the year	Animals identified as having had at least one TB skin test during the calendar year. Due to the same animals being sampled in different DVO areas, the 'Total' is not the sum of the DVO figures.
C21	No. animals TB tested in the year	Animals identified as having had at least one TB skin test during the calendar year. Due to the same animals being sampled in different DVO areas, the 'Total' is not the sum of the DVO figures.
Explanatory Comments for Tuberculosis Statistics - D. Results		
Ref	Data Title	Explanation
D1	No. of herds with TB reactors during month	A herd is included in this figure if the herd number had a TB skin test reactor during the above month.
D2	No. of new reactor herds during month	A herd is defined as being a TB reactor herd if it had at least one TB reactor animal in that month and no TB reactor animals during the previous 12 months.
D3	No. of new reactor herds since start of year	= Since 1st January
D4	No. of new reactor herds in the previous 12 months	Last 12 month period from the above month.
D26	No. of new reactor herds in previous 13-24 months	Last 13-24 month period from the above month.
D5	No. of TB reactor animals during month	A TB reactor animal is defined as an animal where the manual interpretation field for a skin test is positive ('P') with the first test date being taken as the time at which the animal became a reactor. Currently animals with lesions at routine slaughter (*LRS*) are not taken into account.
D6	No. of TB reactor animals since start of year	= Since 1st January
D7	No. of reactor animals in the previous 12 months	Last 12 month period from the above month.
D27	No. of reactor animals in previous 13-24 months	Last 13-24 month period from the above month.
D20	Cumulative herd incidence in year (%)	Number of NEW reactor herds since the start of the calendar year as a proportion of cattle herds which have presented cattle for a TB herd test during the same time period.
D9	Annual herd incidence over the last 12 months (%)	Number of NEW reactor herds during the last 12 months as a proportion of cattle herds which have presented cattle for a TB herd test during the same time period.
D28	Annual herd incidence over the last 13-24 months (%)	Number of NEW reactor herds during the last 13-24 months as a proportion of cattle herds which have presented cattle for a TB herd test during the same time period.
D38	In-year Herd Incidence (%)	Number of NEW reactor herds during the year as a proportion of cattle herds which have presented cattle for a TB herd test during the same time period.
D30	In-year Herd Incidence (%)	Number of NEW reactor herds during the year as a proportion of cattle herds which have presented cattle for a TB herd test during the same time period.
D16	In-year Herd Incidence (%)	Number of NEW reactor herds during the year as a proportion of cattle herds which have presented cattle for a TB herd test during the same time period.
D10	In-year Herd Incidence (%)	Number of NEW reactor herds during the year as a proportion of cattle herds which have presented cattle for a TB herd test during the same time period.
D11	In-year Herd Incidence (%)	Number of NEW reactor herds during the year as a proportion of cattle herds which have presented cattle for a TB herd test during the same time period.
D21	Cumulative animal incidence in year (%)	Number of reactor animals during the above month as a proportion of cattle which have been presented for a TB test during the same time period.
D12	Annual animal incidence over the last 12 months (%)	Number of reactor animals during the last 12 months as a proportion of cattle which have been presented for a TB test during the same time period.
D29	Annual animal incidence over the last 13-24 months (%)	Number of reactor animals during the last 13-24 months as a proportion of cattle which have been presented for a TB test during the same time period.

D39	In year Animal Incidence (%)	Number of reactor animals during the year as a proportion of cattle which have been presented for a TB herd test during the same time period.
D31	In year Animal Incidence (%)	Number of reactor animals during the year as a proportion of cattle which have been presented for a TB herd test during the same time period.
D15	In year Animal Incidence (%)	Number of reactor animals during the year as a proportion of cattle which have been presented for a TB herd test during the same time period.
D13	In year Animal Incidence (%)	Number of reactor animals during the year as a proportion of cattle which have been presented for a TB herd test during the same time period.
D14	In year Animal Incidence (%)	Number of reactor animals during the year as a proportion of cattle which have been presented for a TB herd test during the same time period.
D34	APT during current month	= The reactor disclosure rate per 1,000 animal tests current calendar month.
D22	APT since start of year	The reactor disclosure rate per 1,000 animal tests since the start of the calendar year.
D17	Current 12 month moving average APT	The reactor disclosure rate per 1,000 animal tests. Current refers to the rate over the last 12 months.
D42	In year APT	The reactor disclosure rate per 1,000 animal tests during the calendar year.
D40	In year APT	The reactor disclosure rate per 1,000 animal tests during the calendar year.
D32	In year APT	The reactor disclosure rate per 1,000 animal tests during the calendar year.
D18	In year APT	The reactor disclosure rate per 1,000 animal tests during the calendar year.
D19	In year APT	The reactor disclosure rate per 1,000 animal tests during the calendar year.
D23	No. negative in contacts since start of year	Number of animals taken as negative in contacts since the start of the year.
d46	No. Negative in contacts over last 12 months (%)	= Number of negative in contacts during the last 12 months
D43	No. negative in contacts during the year	Number of animals taken as negative in contacts during the year.
D41	No. negative in contacts during the year	Number of animals taken as negative in contacts during the year.
D33	No. negative in contacts during the year	Number of animals taken as negative in contacts during the year.
D24	No. negative in contacts during the year	Number of animals taken as negative in contacts during the year.
D25	No. negative in contacts during the year	Number of animals taken as negative in contacts during the year.
D37	Reactor removal time during the year	Figures given are median values for working days estimated from calendar days (calendar days multiplied by 0.685). Reactors which are not yet slaughtered or where they they were first declared as reactors at slaughter are excluded.
D45	Reactor removal time during the year	Figures given are median values for working days estimated from calendar days (calendar days multiplied by 0.685). Reactors which are not yet slaughtered or where they they were first declared as reactors at slaughter are excluded.
D35	Reactor removal time during the year	Figures given are median values for working days estimated from calendar days (calendar days multiplied by 0.685). Reactors which are not yet slaughtered or where they they were first declared as reactors at slaughter are excluded.
D44	Reactor removal time during the year	Figures given are median values for working days estimated from calendar days (calendar days multiplied by 0.685). Reactors which are not yet slaughtered or where they they were first declared as reactors at slaughter are excluded.
D36	Reactor removal time during the year	Figures given are median values for working days estimated from calendar days (calendar days multiplied by 0.685). Reactors which are not yet slaughtered or where they they were first declared as reactors at slaughter are excluded.

g35	Confirmed TB animal prevalence in last 12 months (%)	Number of TB reactors that were confirmed during the last 12 months by the presence of visible lesions at slaughter and/or by laboratory confirmation (histopathology and/or culture) plus the number of other animals where M. bovis was cultured from TB-like lesions found at slaughter during the last 12 months that were not identified as TB reactor animals divided by the number of animals tuberculin tested during the last 12 months expressed as a %
g36	Confirmed TB animal prevalence in last 13-24 months (%)	Number of TB reactors that were confirmed during the last 13-24 months by the presence of visible lesions at slaughter and/or by laboratory confirmation (histopathology and/or culture) plus the number of other animals where M. bovis was cultured from TB-like lesions found at slaughter during the last 13-24 months that were not identified as TB reactor animals divided by the number of animals tuberculin tested during the last 13-24 months expressed as a %
g18	Confirmed TB animal prevalence in year (%)	Number of TB reactors that were confirmed during the year by the presence of visible lesions at slaughter and/or by laboratory confirmation (histopathology and/or culture) plus the number of other animals where M. bovis was cultured from TB-like lesions found at slaughter during the year that were not identified as TB reactor animals divided by the number of animals tuberculin tested during the year expressed as a %
g14	Confirmed TB animal prevalence in year (%)	Number of TB reactors that were confirmed during the year by the presence of visible lesions at slaughter and/or by laboratory confirmation (histopathology and/or culture) plus the number of other animals where M. bovis was cultured from TB-like lesions found at slaughter during the year that were not identified as TB reactor animals divided by the number of animals tuberculin tested during the year expressed as a %
g15	Confirmed TB animal prevalence in year (%)	Number of TB reactors that were confirmed during the year by the presence of visible lesions at slaughter and/or by laboratory confirmation (histopathology and/or culture) plus the number of other animals where M. bovis was cultured from TB-like lesions found at slaughter during the year that were not identified as TB reactor animals divided by the number of animals tuberculin tested during the year expressed as a %
g16	Confirmed TB animal prevalence in year (%)	Number of TB reactors that were confirmed during the year by the presence of visible lesions at slaughter and/or by laboratory confirmation (histopathology and/or culture) plus the number of other animals where M. bovis was cultured from TB-like lesions found at slaughter during the year that were not identified as TB reactor animals divided by the number of animals tuberculin tested during the year expressed as a %
g17	Confirmed TB animal prevalence in year (%)	Number of TB reactors that were confirmed during the year by the presence of visible lesions at slaughter and/or by laboratory confirmation (histopathology and/or culture) plus the number of other animals where M. bovis was cultured from TB-like lesions found at slaughter during the year that were not identified as TB reactor animals divided by the number of animals tuberculin tested during the year expressed as a %
g37	No. herds with confirmed TB in last 12 months	Herds that had at least one confirmed TB animal during the last 12 months.
g38	No. herds with confirmed TB in last 13-24 months	Herds that had at least one confirmed TB animal during the last 13-24 months.
g24	No. herds with confirmed TB in year	Herds that had at least one confirmed TB animal during the year.
g20	No. herds with confirmed TB in year	Herds that had at least one confirmed TB animal during the year.
g21	No. herds with confirmed TB in year	Herds that had at least one confirmed TB animal during the year.
g22	No. herds with confirmed TB in year	Herds that had at least one confirmed TB animal during the year.
g23	No. herds with confirmed TB in year	Herds that had at least one confirmed TB animal during the year.
g39	Confirmed TB herd prevalence in last 12 months (%)	Number of herds that had at least one confirmed TB animal during the last 12 months divided the number of herds that presented cattle at a TB herd test expressed as a %.
g40	Confirmed TB herd prevalence in last 13-24 months (%)	Number of herds that had at least one confirmed TB animal during the last 13-24 months divided the number of herds that presented cattle at a TB herd test expressed as a %.
g30	Confirmed TB herd prevalence in year (%)	Number of herds that had at least one confirmed TB animal during the year divided the number of herds that presented cattle at a TB herd test expressed as a %.
g26	Confirmed TB herd prevalence in year (%)	Number of herds that had at least one confirmed TB animal during the year divided the number of herds that presented cattle at a TB herd test expressed as a %.
g27	Confirmed TB herd prevalence in year (%)	Number of herds that had at least one confirmed TB animal during the year divided the number of herds that presented cattle at a TB herd test expressed as a %.
g28	Confirmed TB herd prevalence in year (%)	Number of herds that had at least one confirmed TB animal during the year divided the number of herds that presented cattle at a TB herd test expressed as a %.
g29	Confirmed TB herd prevalence in year (%)	Number of herds that had at least one confirmed TB animal during the year divided the number of herds that presented cattle at a TB herd test expressed as a %.