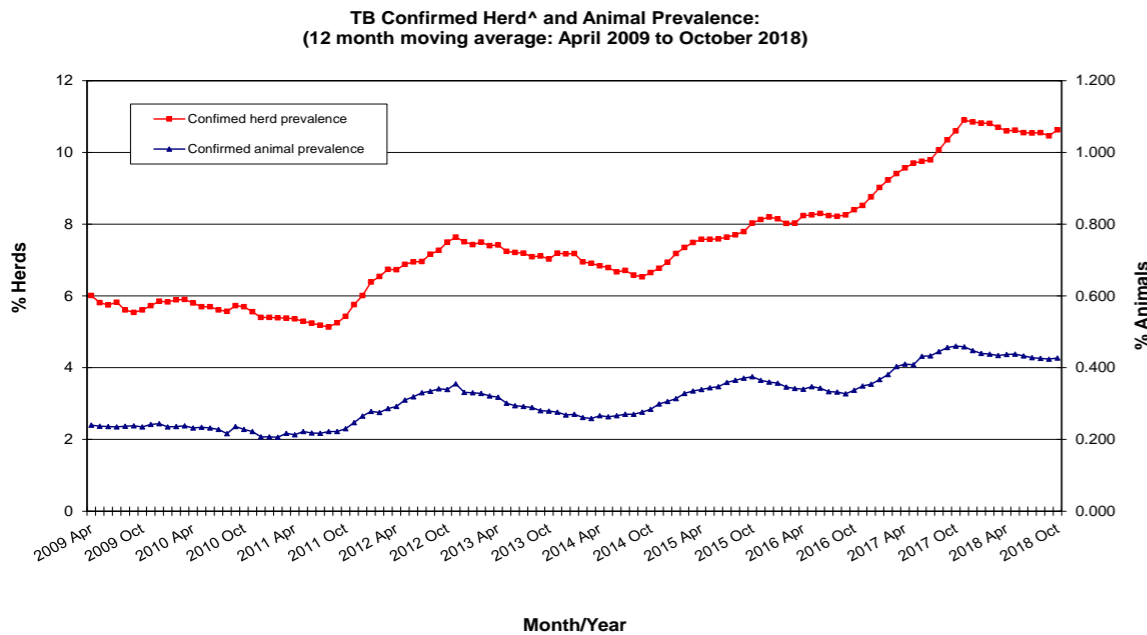
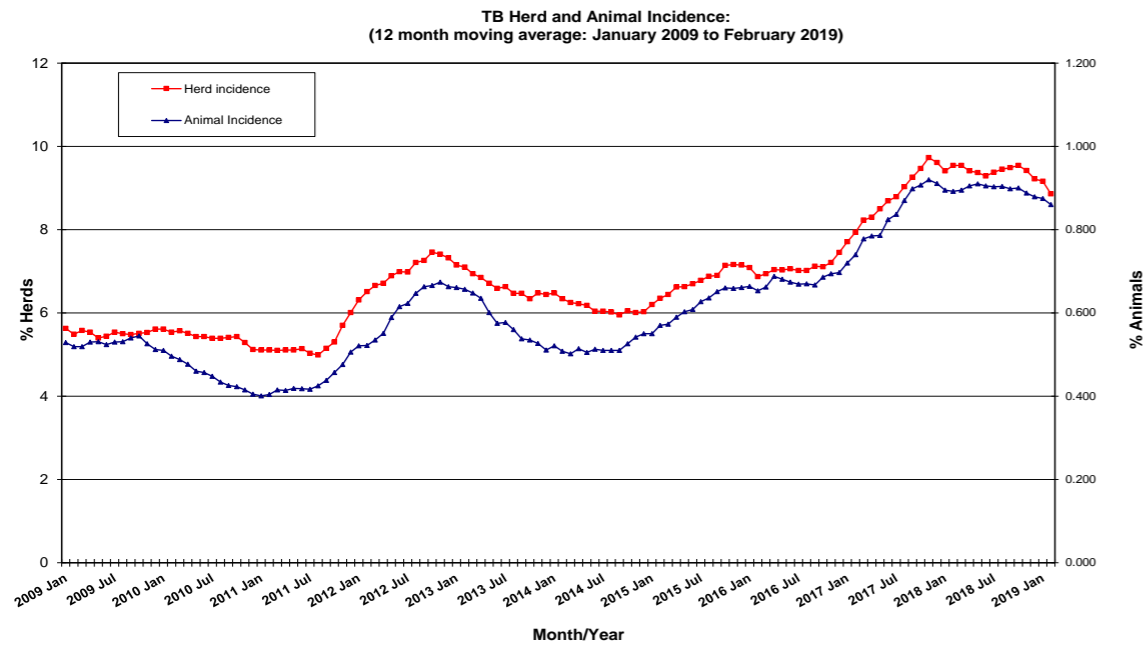


Tuberculosis: Statistics for February 2019



Disease statistics

Annual herd incidence over the last 12 months (%)	8.86	
Annual herd incidence over the last 13-24 months (%)	9.54	
2018 Herd Incidence (%)	9.22	
Annual animal incidence over the last 12 months (%)	0.860	
Annual animal incidence over the last 13-24 months (%)	0.892	
2018 Animal Incidence (%)	0.879	
Confirmed TB herd prevalence in last 12 months (%)	10.63	for Month = October 2018
Confirmed TB herd prevalence in last 13-24 months (%)	10.60	for Month = October 2018
Confirmed TB herd prevalence in 2017 (%)	10.85	for Month = October 2018
Confirmed TB animal prevalence in last 12 months (%)	0.427	for Month = October 2018
Confirmed TB animal prevalence in last 13-24 months (%)	0.460	for Month = October 2018
Confirmed TB animal prevalence in 2017 (%)	0.448	for Month = October 2018

TB skin test reactors

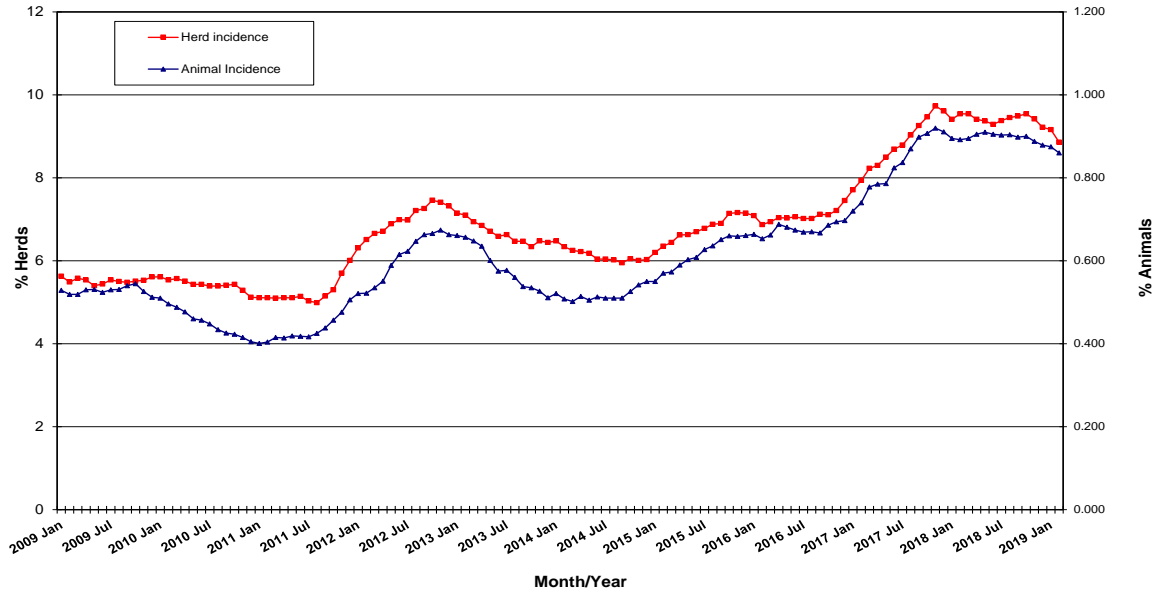
No. of TB reactor animals during month	952
No. of TB reactor animals since start of year	2,207
No. of reactor animals in the previous 12 months	15,024
No. of reactor animals in the previous 13-24 months	15,660

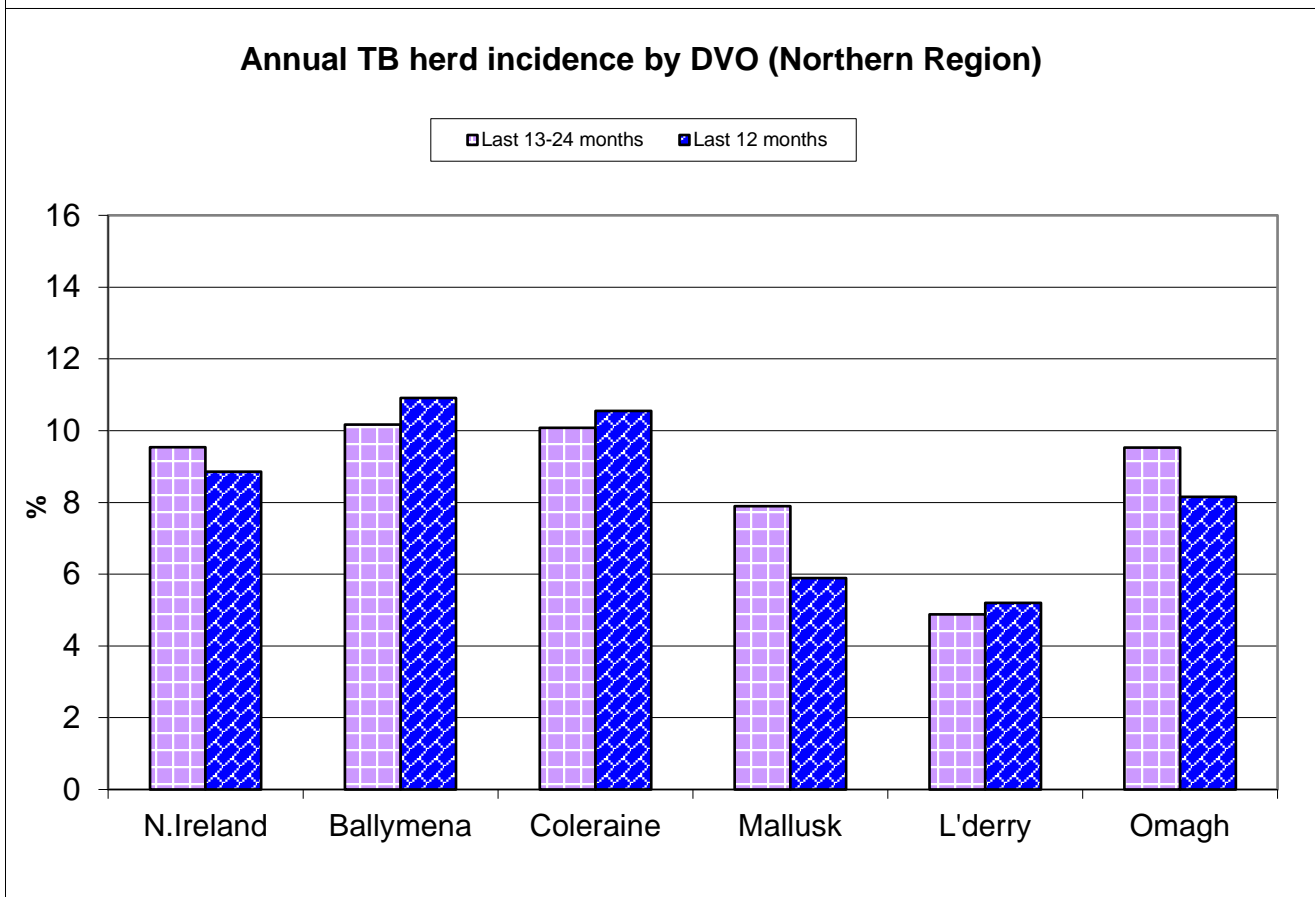
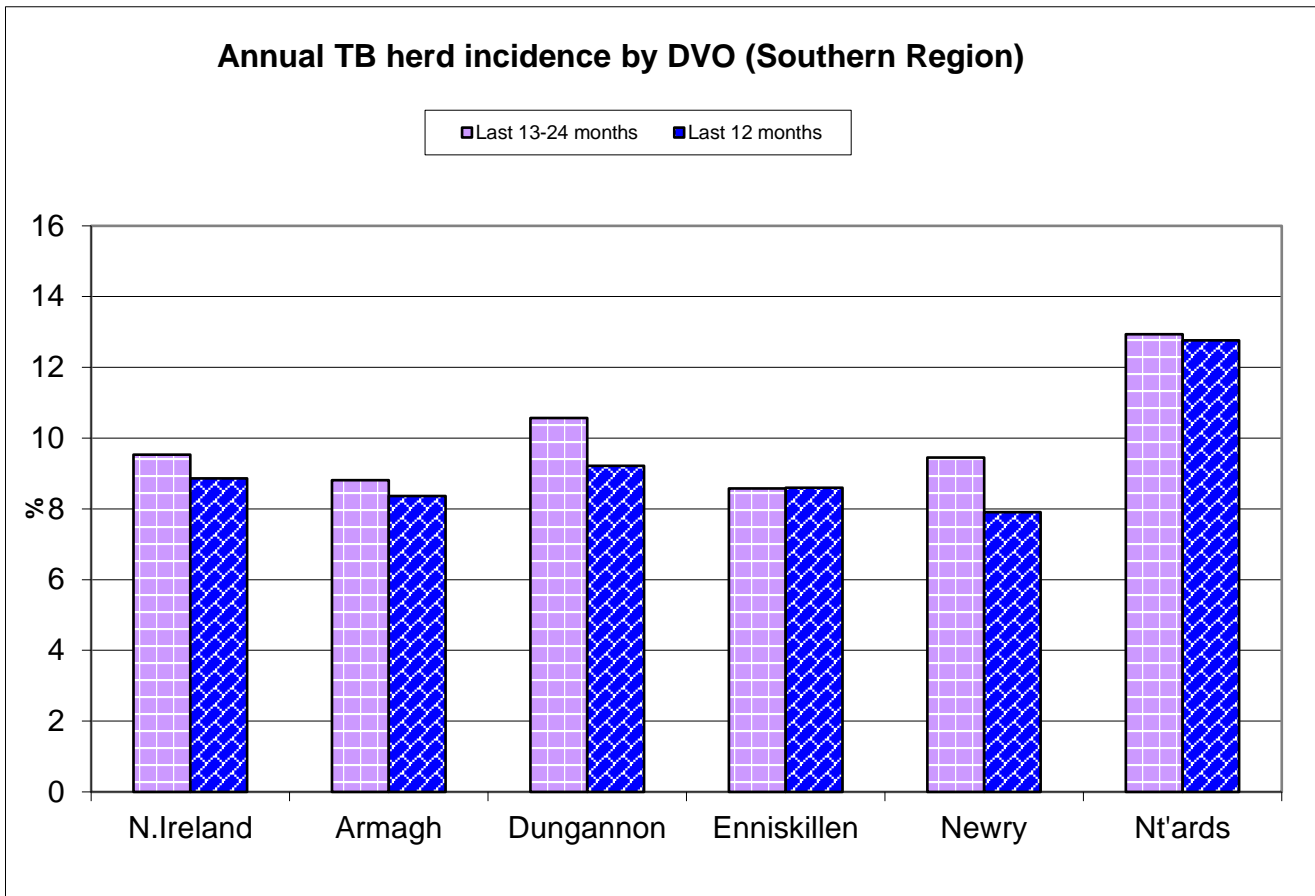
Herds & animals tested

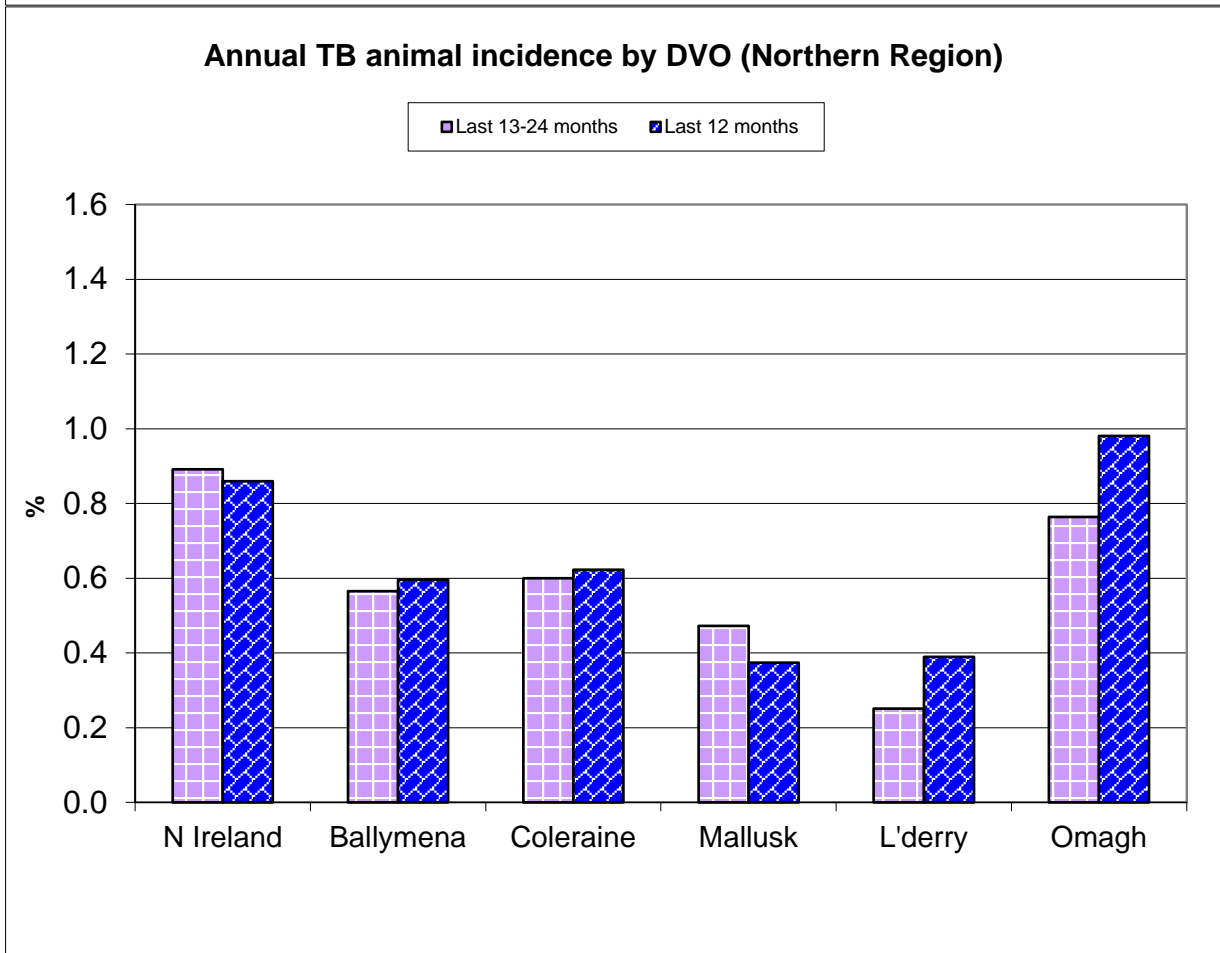
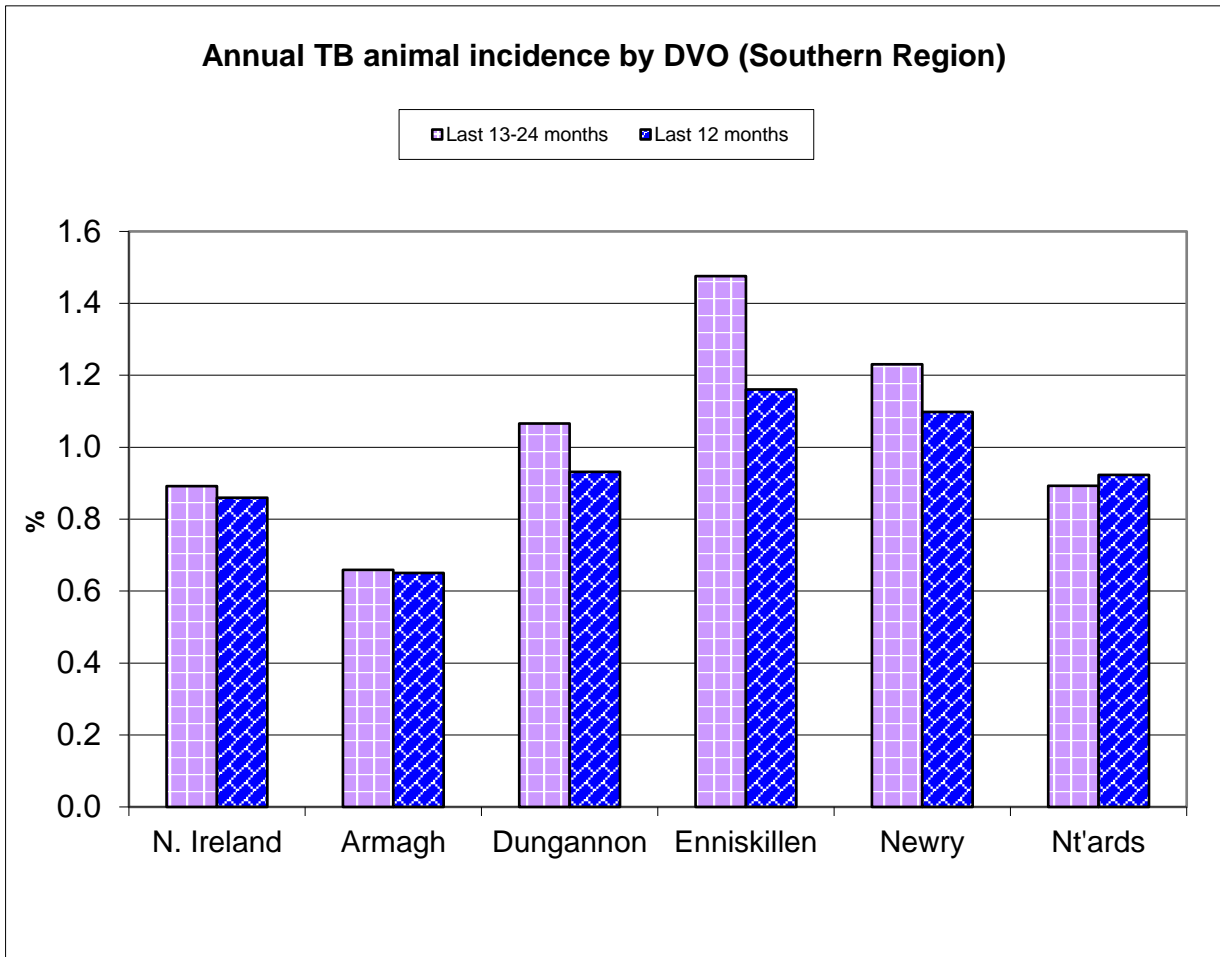
No. herds with herd test during last 12 months	22,607
No. herds with herd test during last 13-24 months	22,881
No. herds with herd test during 2018	22,656
No. animals TB tested since start of year	583,171
No. animals TB tested in previous 12 months	1,747,561
No. animals TB tested in previous 13-24 months	1,756,173
No. animals TB tested in 2018	1,744,432

For definitions of these parameters, refer to the 'Explanatory Comments' worksheet: [Click here](#)

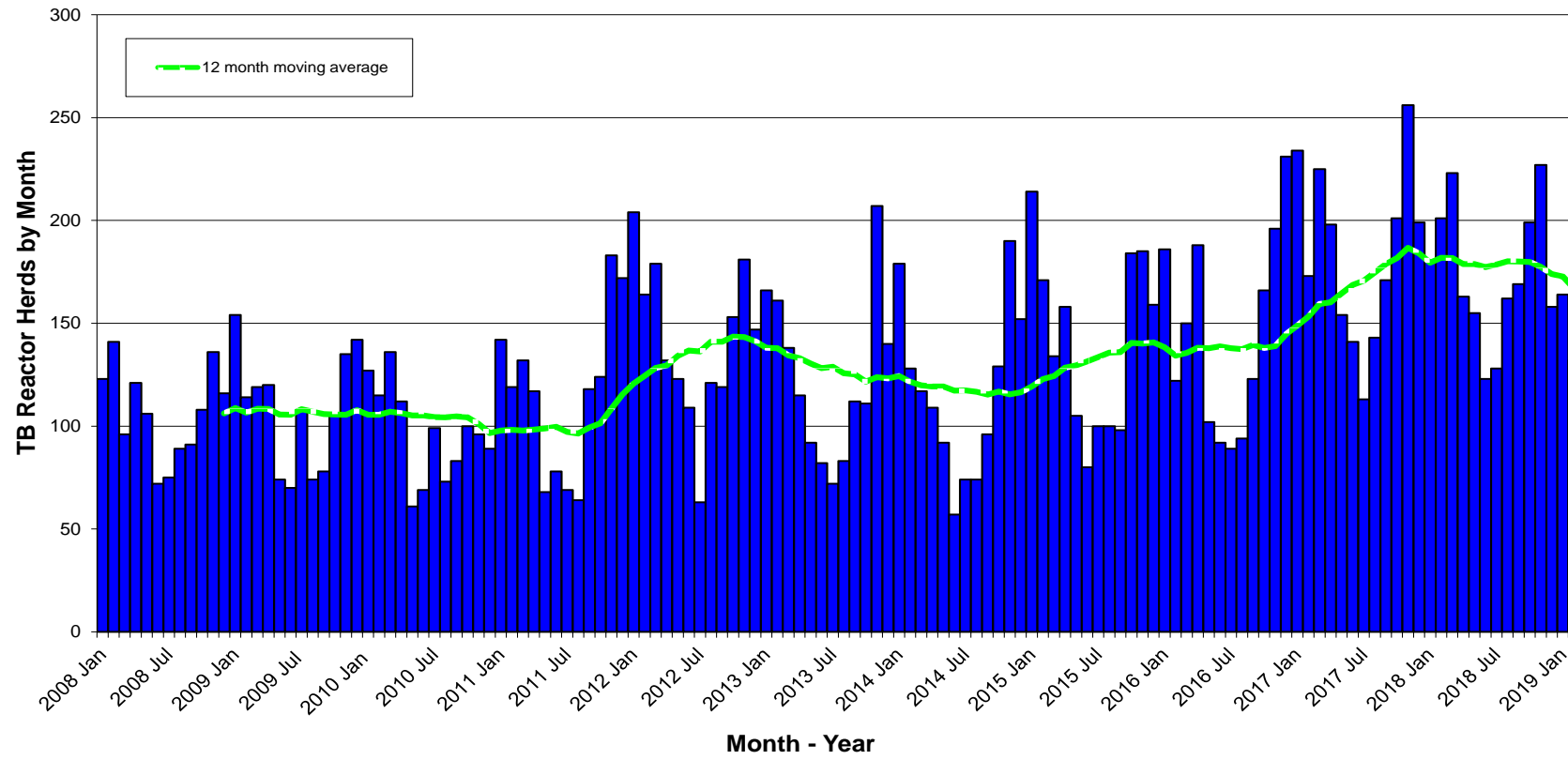
**TB Herd and Animal Incidence:
(12 month moving average: January 2009 to February 2019)**



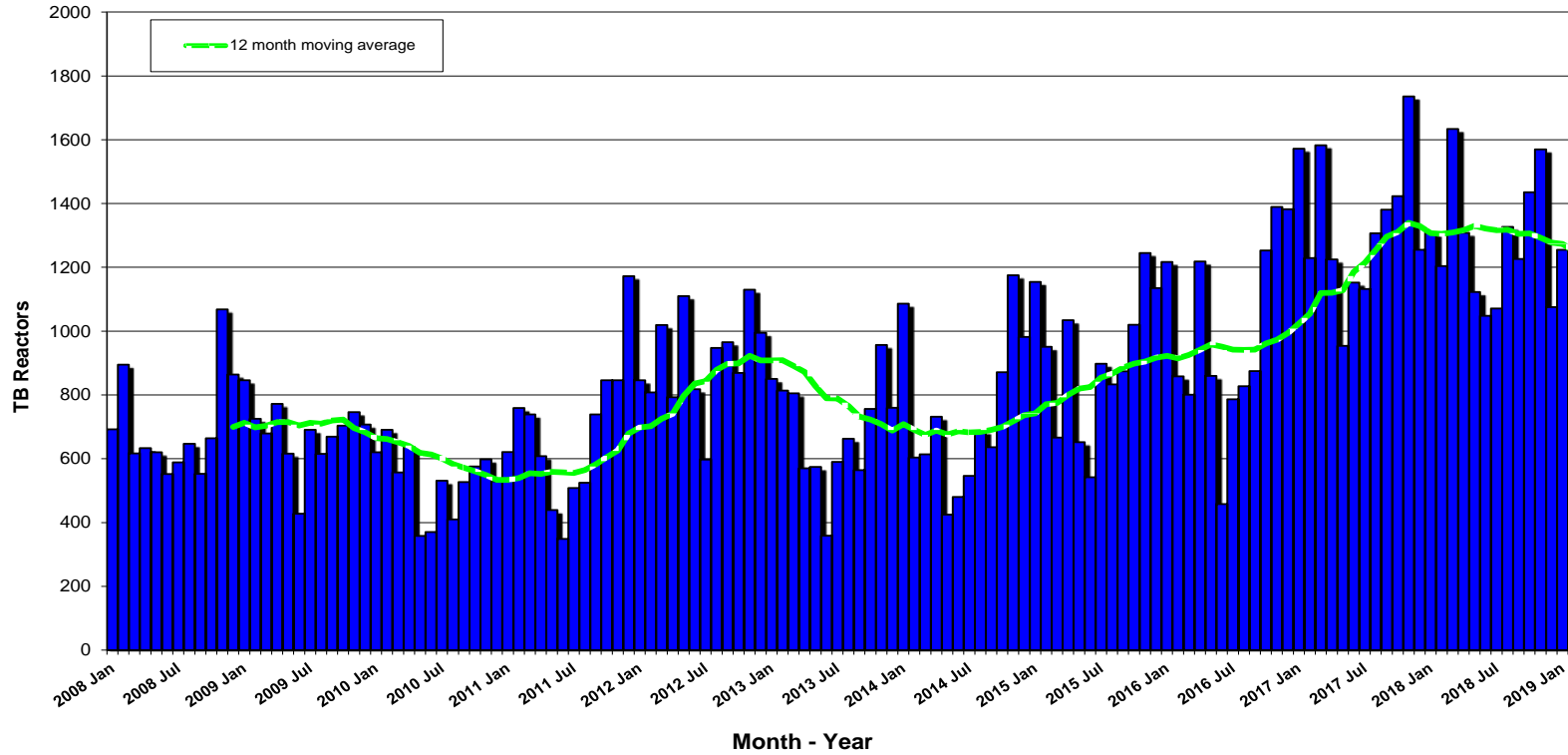


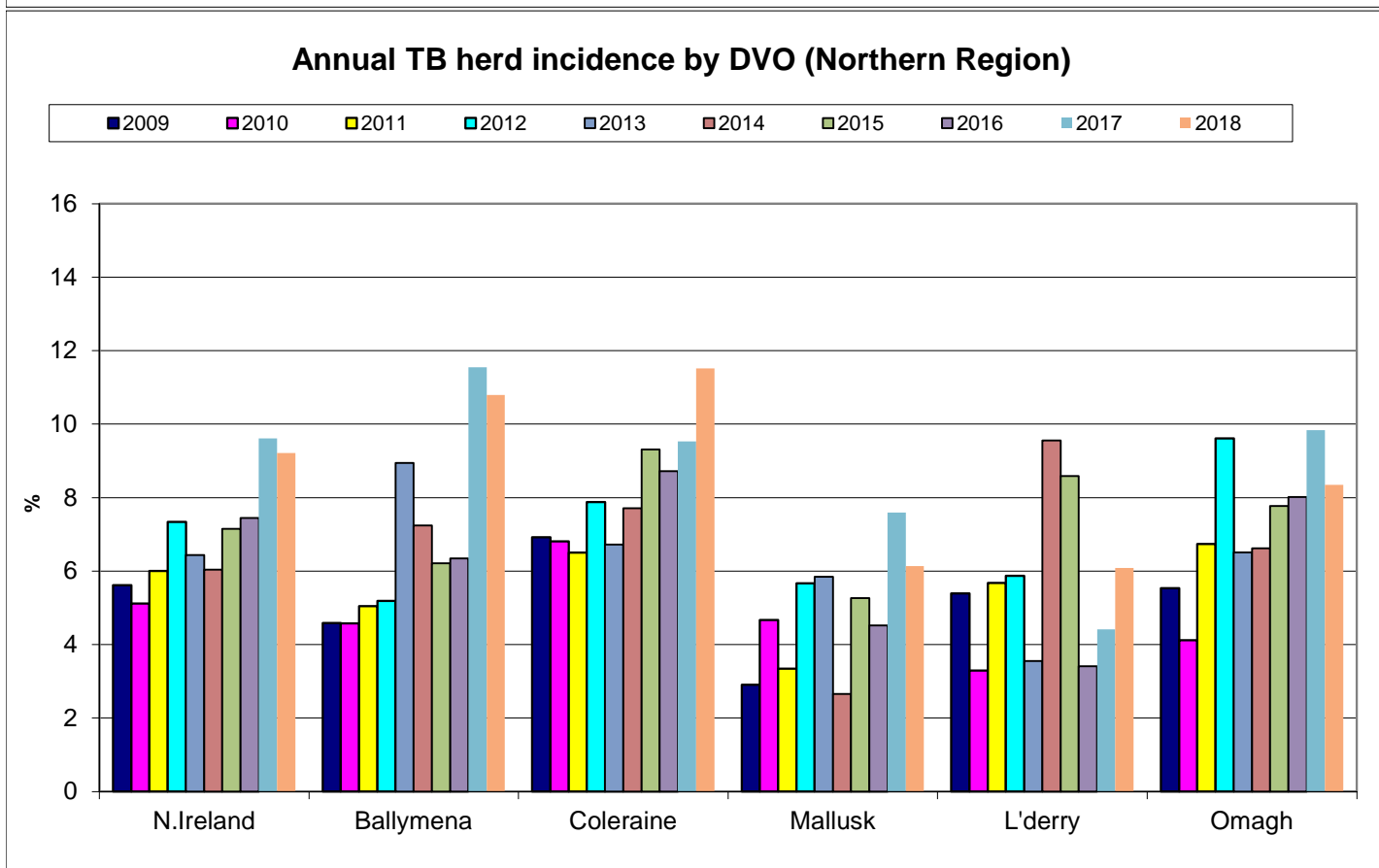
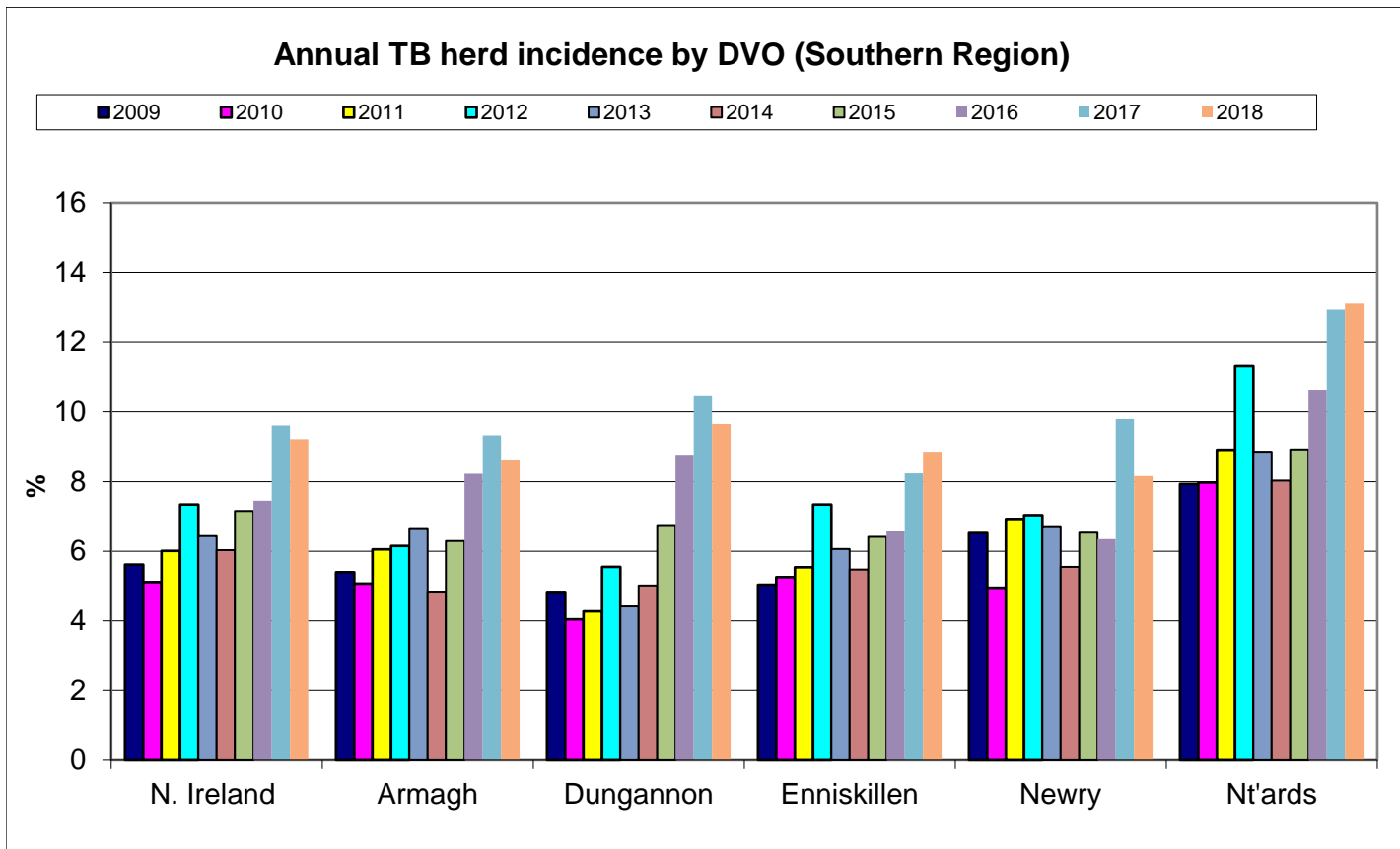


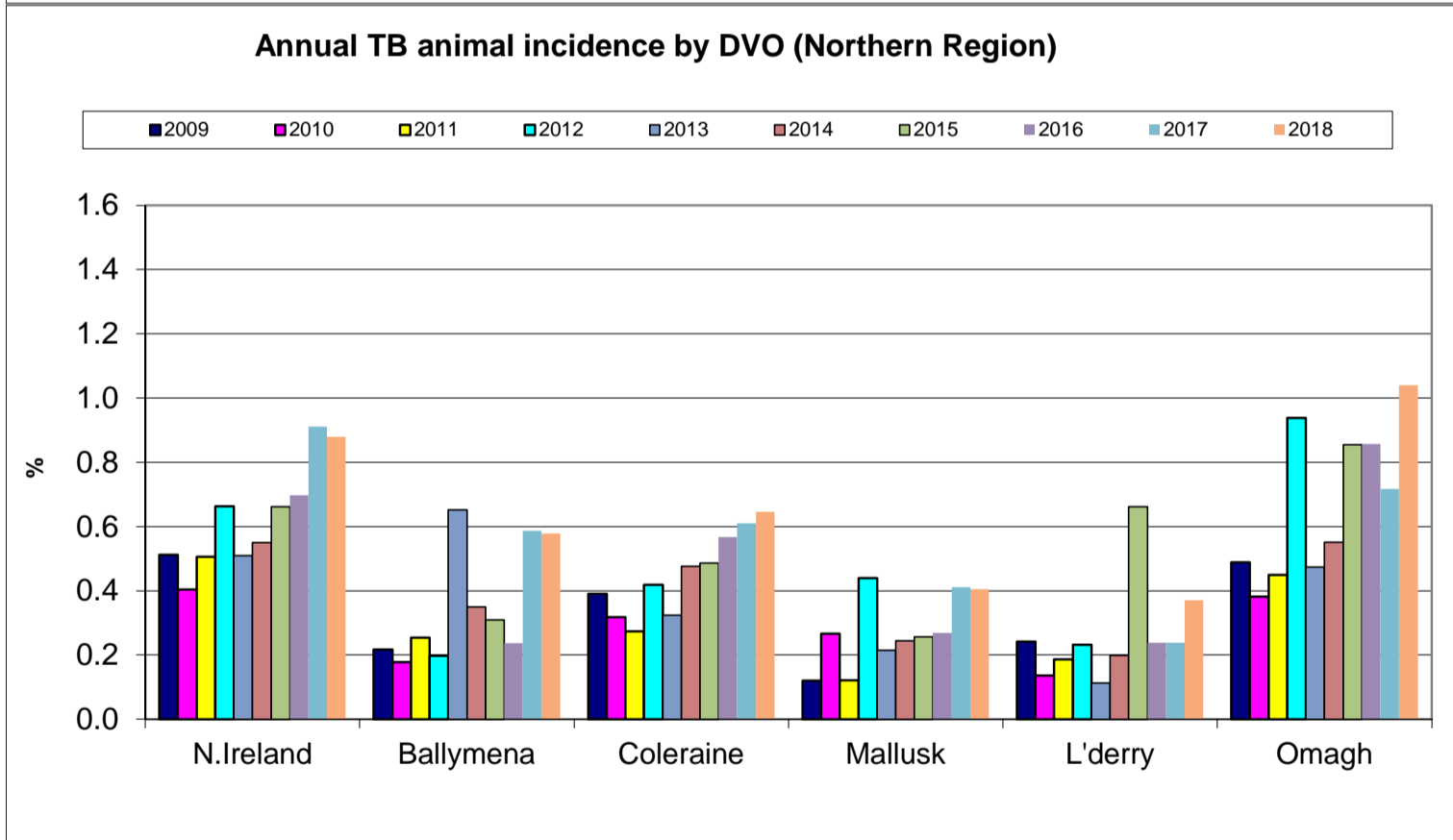
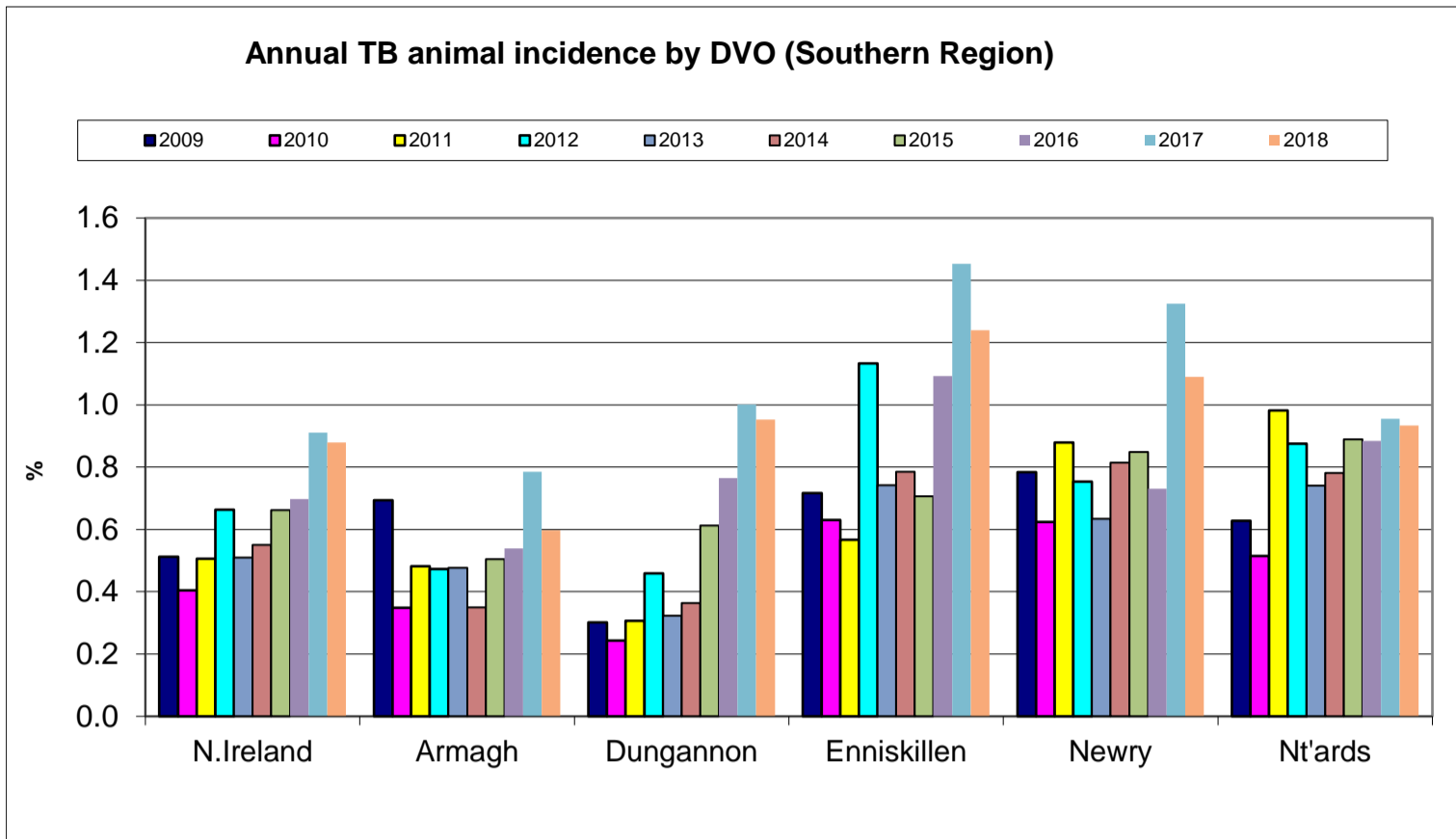
New TB Reactor Herds: January 2008 to February 2019



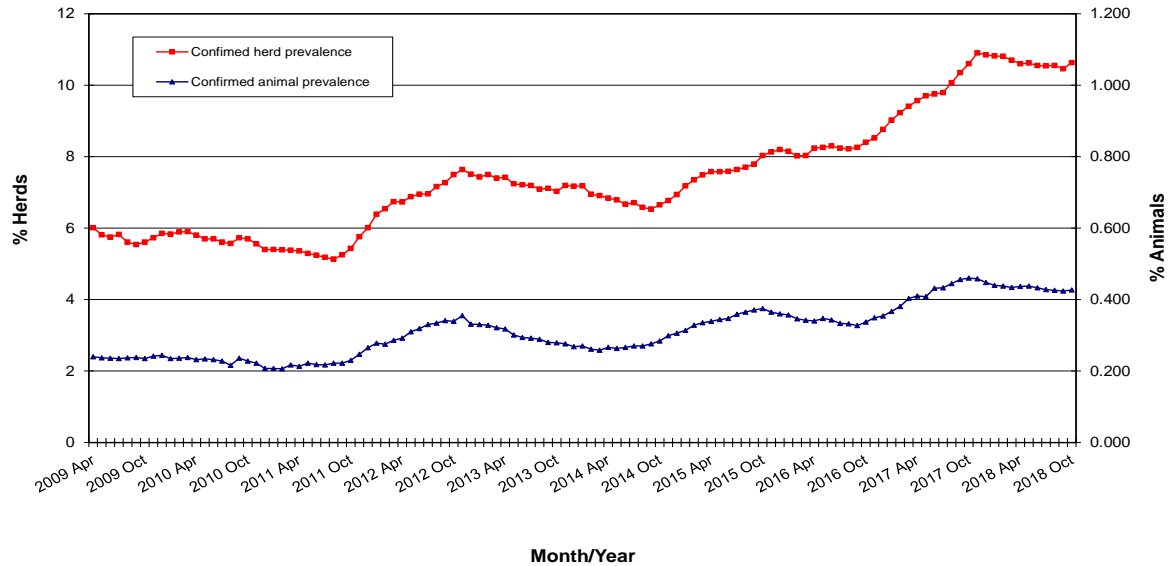
TB Reactors: January 2008 to February 2019



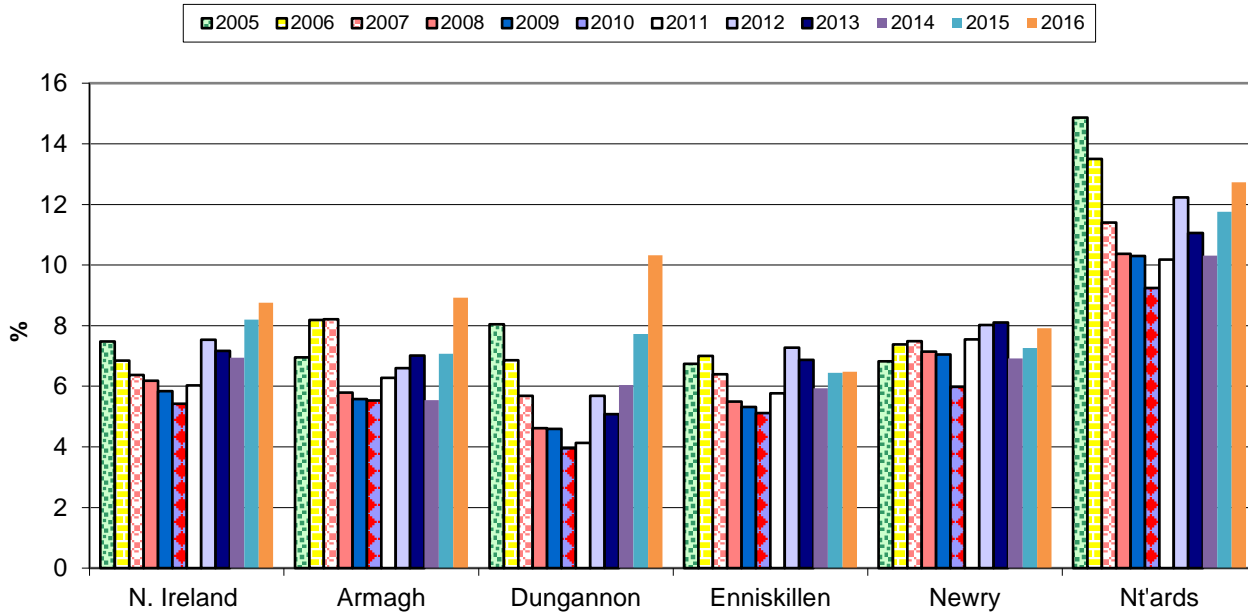




**TB Confirmed Herd[^] and Animal Prevalence:
(12 month moving average: April 2009 to October 2018)**

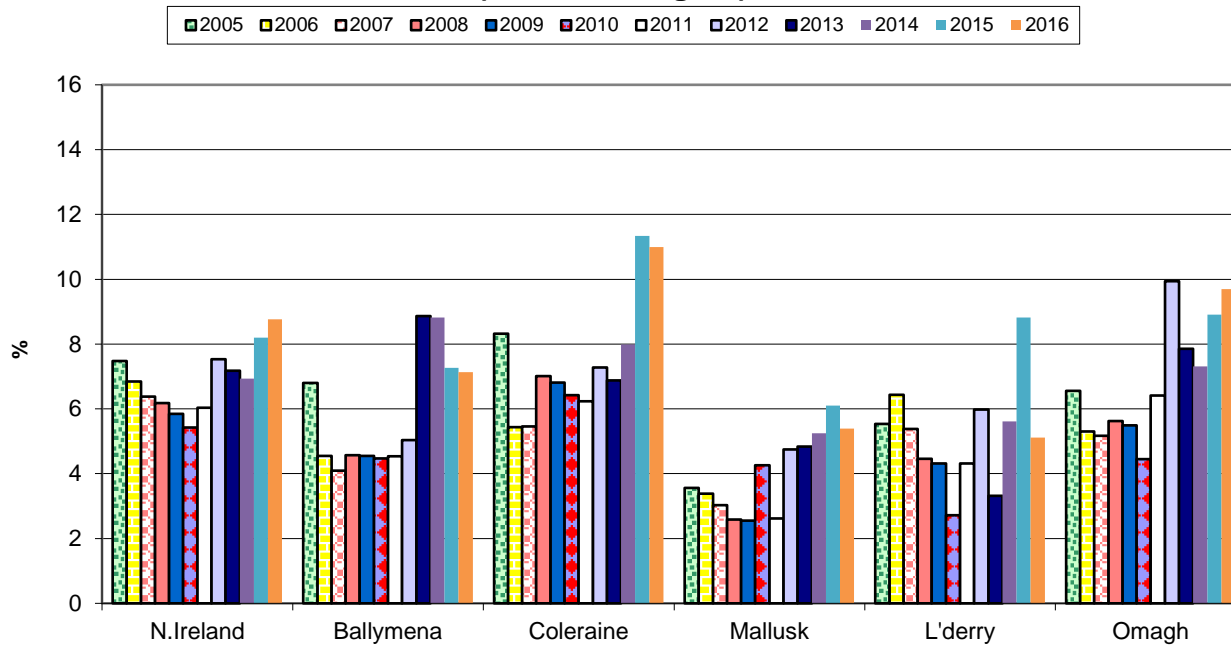


Annual confirmed TB herd prevalence by DVO (Southern Region)



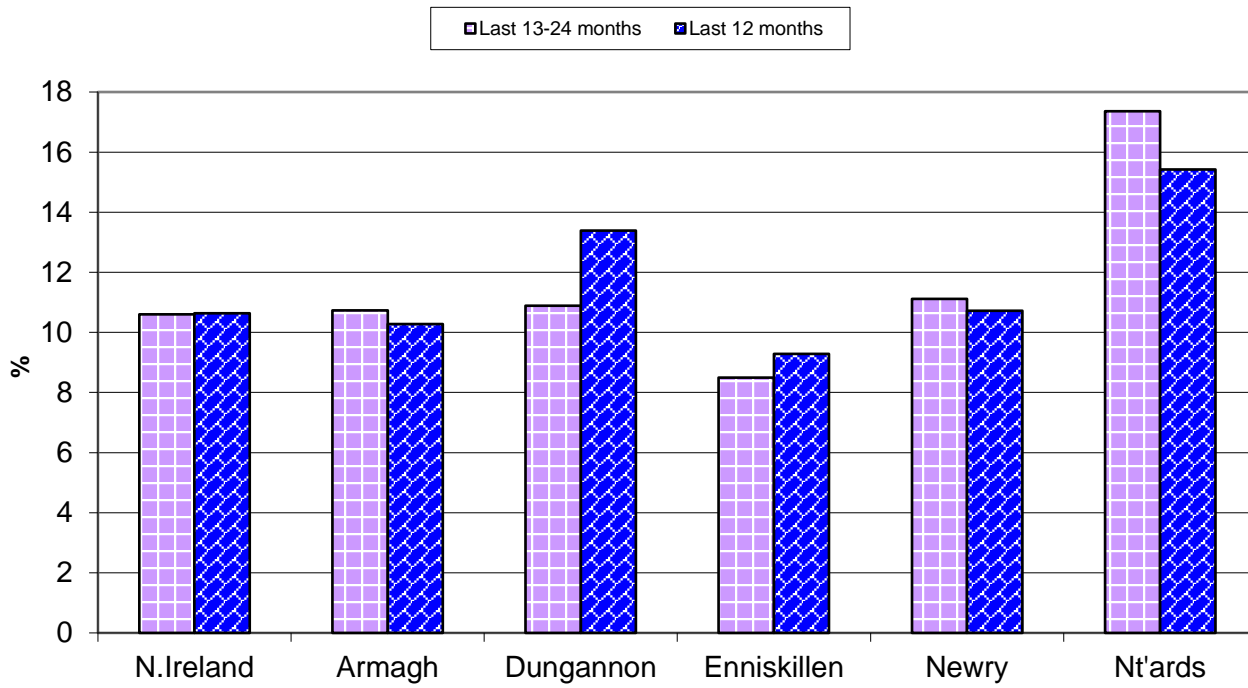
^ numerator includes all herds that had confirmed TB within the 12 month period

Annual confirmed TB herd prevalence by DVO (Northern Region)



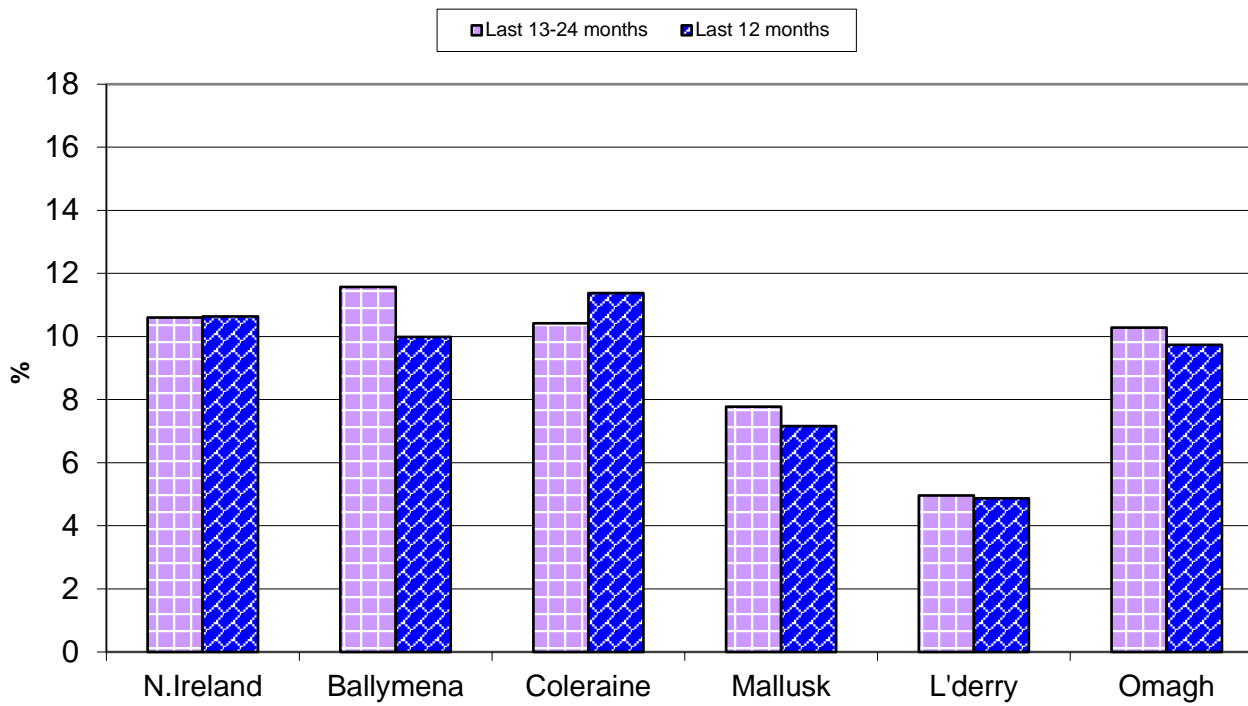
^ numerator includes all herds that had confirmed TB within the 12 month period

Annual confirmed TB herd prevalence[^] by DVO (Southern Region)



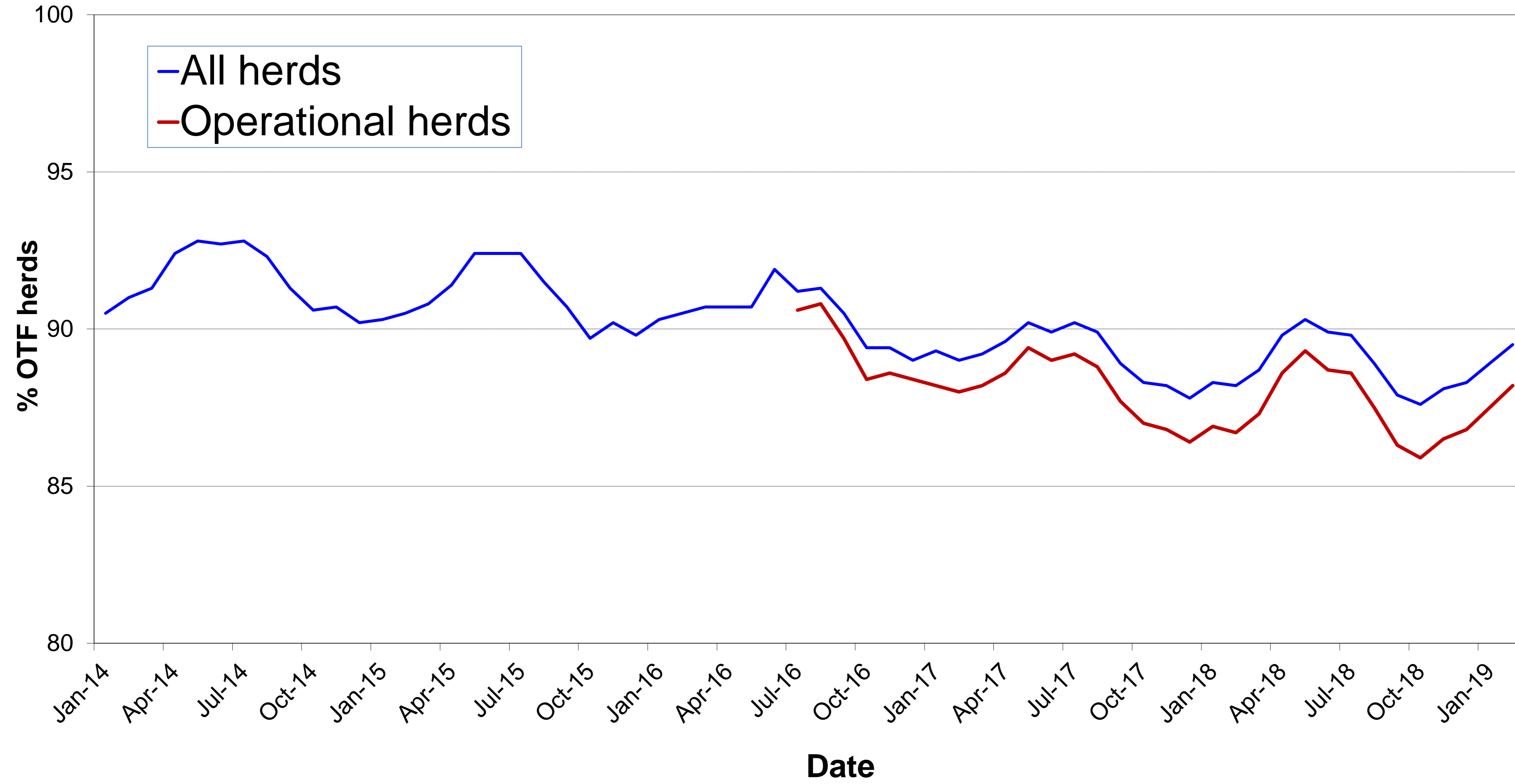
[^] numerator includes all herds that had confirmed TB within the 12 month period

Annual confirmed TB herd prevalence[^] by DVO (Northern Region)



[^] numerator includes all herds that had confirmed TB within the 12 month period

% herds that are officially tuberculosis free (OTF herds)



Month = February 2019

Ref.	Total	Armagh	Ballymena	Coleraine	Dungannon	Enniskillen	Mallusk	L'derry	Newry	Nt'ards	Omagh	
d1	No. of herds with TB reactors during month	292	25	18	32	36	29	20	6	46	48	32
d2	No. of new reactor herds during month	132	11	6	20	15	16	10	2	22	14	16
d3	No. of new reactor herds since start of year	296	29	20	33	40	42	20	5	46	34	27
d4	No. of new reactor herds in the previous 12 months	2003	187	148	262	251	254	92	45	292	238	234
d26	No. of new reactor herds in the previous 13-24 months	2182	201	139	253	294	254	124	43	350	245	279
d5	No. of TB reactor animals during month	952	120	53	83	73	97	64	32	180	151	99
d6	No. of TB reactor animals since start of year	2207	216	123	154	335	294	112	56	418	274	225
d7	No. of reactor animals in the previous 12 months	15024	1230	753	1468	1995	2001	565	260	2817	1809	2126
d27	No. of reactor animals in the previous 13-24 months	15660	1262	713	1414	2293	2551	716	166	3124	1734	1687
d20	Cumulative herd incidence in year (%)	4.18	4.18	4.19	3.87	5.08	4.72	4.23	2.11	3.72	5.18	3.51
d9	Annual herd incidence over the last 12 months (%)	8.86	8.36	10.91	10.55	9.22	8.60	5.89	5.20	7.91	12.77	8.15
d28	Annual herd incidence over the last 13-24 months (%)	9.54	8.81	10.17	10.08	10.57	8.58	7.90	4.88	9.45	12.94	9.53
d16	2018 Herd Incidence (%)	9.22	8.60	10.79	11.51	9.66	8.86	6.13	6.08	8.16	13.13	8.35
d10	2017 Herd Incidence (%)	9.61	9.33	11.55	9.53	10.45	8.24	7.59	4.41	9.80	12.96	9.83
d11	2016 Herd Incidence (%)	7.45	8.23	6.34	8.72	8.77	6.58	4.52	3.41	6.35	10.62	8.01
d38	2015 Herd Incidence (%)	7.15	6.29	6.21	9.31	6.75	6.41	5.26	8.59	6.54	8.92	7.77
d30	2014 Herd Incidence (%)	6.03	4.84	7.24	7.71	5.02	5.48	5.24	4.83	5.55	8.03	6.62
d21	Cumulative animal incidence in year (%)	0.378	0.388	0.282	0.184	0.547	0.519	0.244	0.264	0.512	0.412	0.332
d12	Annual animal incidence over the last 12 months (%)	0.860	0.650	0.596	0.623	0.932	1.161	0.374	0.390	1.098	0.924	0.981
d29	Annual animal incidence over the last 13-24 months (%)	0.892	0.660	0.566	0.600	1.066	1.475	0.473	0.251	1.230	0.893	0.764
d15	2018 Animal Incidence (%)	0.879	0.598	0.579	0.646	0.952	1.239	0.406	0.371	1.090	0.934	1.040
d13	2017 Animal Incidence (%)	0.911	0.785	0.587	0.610	1.002	1.453	0.411	0.238	1.325	0.956	0.717
d14	2016 Animal Incidence (%)	0.697	0.539	0.237	0.567	0.765	1.092	0.269	0.238	0.731	0.885	0.857
d39	2015 Animal Incidence (%)	0.661	0.504	0.310	0.486	0.612	0.707	0.256	0.661	0.848	0.889	0.855
d31	2014 Animal Incidence (%)	0.550	0.350	0.349	0.476	0.364	0.786	0.244	0.199	0.815	0.781	0.551
d34	APT during current month	3.33	4.14	2.50	2.20	2.17	3.60	2.83	3.67	4.36	4.71	3.05
d22	APT since start of year	3.75	3.85	2.80	1.83	5.43	5.15	2.43	2.62	5.05	4.10	3.30
d17	Current 12 month moving average APT	4.58	3.91	3.11	3.14	5.18	6.38	2.41	2.63	5.92	4.77	5.71

d18	2018 APT	4.67	3.57	3.02	3.27	5.29	6.95	2.55	2.50	5.88	4.84	6.12
d19	2017 APT	5.07	4.57	3.40	3.31	5.89	8.74	2.78	1.73	7.57	5.00	4.24
d42	2016 APT	4.23	3.45	1.63	3.14	4.99	7.28	1.98	1.72	4.62	5.20	5.20
d40	2015 APT	4.06	3.37	2.08	2.80	4.31	4.46	1.88	4.51	5.33	5.06	5.38
d32	2014 APT	3.55	2.39	2.18	3.24	2.78	5.24	1.79	1.58	5.08	4.64	3.65
d23	No. negative in contacts since start of year	121	10	5	16	31	32	10	3	3	4	7
d46	No. negative in contacts over last 12 months	1039	64	108	124	179	90	50	10	165	155	94
d24	No. negative in contacts during 2018	999	57	103	109	151	62	40	10	165	155	147
d25	No. negative in contacts during 2017	891	92	14	189	43	83	50	1	242	74	103
d43	No. negative in contacts during 2016	579	37	11	78	24	105	8	57	17	63	179
d41	No. negative in contacts during 2015	755	59	10	23	62	37	45	9	73	95	342
d33	No. negative in contacts during 2014	1060	40	10	100	227	93	29	9	201	35	316
d37	Reactor removal time 2018	9.6	13.0	8.2	8.9	11.0	9.6	12.3	8.9	12.3	9.6	8.9
d47	Reactor removal time 2017	9.6	11.6	8.2	8.9	12.3	9.6	9.6	8.2	12.3	11.6	8.2
D44	Reactor removal time 2016	8.9	11.0	8.9	8.2	8.2	8.9	8.9	8.2	8.9	8.2	8.2
d36	Reactor removal time 2015	8.9	9.6	9.6	8.9	8.9	8.2	8.9	8.2	9.6	9.6	8.2
d45	Reactor removal time 2014	8.9	9.6	8.9	8.9	8.9	8.9	8.9	8.2	10.3	8.9	8.2
d35	Reactor removal time 2013	8.9	9.6	8.9	8.2	9.6	8.9	9.6	8.9	9.6	9.6	8.2

Tuberculosis: number of reactor herds by month and by DVO in 2019 and unique herd breakdowns during the year

2019		DVO_CODE										
Year	Month	Armagh	Ballymena	Coleraine	Dungannon	Enniskillen	L'Derry	Mallusk	Newry	Nt'Ards	Omagh	Total
2019	1	18	14	13	25	26	3	10	24	20	11	164
2019	2	11	6	20	15	16	2	10	22	14	16	132
2019	3											0
2019	4											0
2019	5											0
2019	6											0
2019	7											0
2019	8											0
2019	9											0
2019	10											0
2019	11											0
2019	12											0
Total		29	20	33	40	42	5	20	46	34	27	296

Unique Herd Breakdowns		DVO_CODE									
Year	Armagh	Ballymena	Coleraine	Dungannon	Enniskillen	L'Derry	Mallusk	Newry	Nt'Ards	Omagh	Total Herds
2019	55	45	65	77	69	13	38	99	92	66	619

Tuberculosis: number of reactor herds by month and by DVO in 2018 and unique herd breakdowns during the year

2018		DVO_CODE										
Year	Month	Armagh	Ballymena	Coleraine	Dungannon	Enniskillen	L'Derry	Mallusk	Newry	Nt'Ards	Omagh	Total
2018	1	18	12	22	26	22	4	15	25	20	16	180
2018	2	15	7	35	27	28	9	9	31	22	18	201
2018	3	14	20	32	31	23	1	18	32	23	29	223
2018	4	18	12	24	22	22	3	1	29	13	19	163
2018	5	15	6	18	29	21	3	4	26	13	20	155
2018	6	8	9	21	12	13	4	5	17	19	15	123
2018	7	8	4	17	19	21	4	2	21	16	16	128
2018	8	22	15	23	25	19	0	5	17	20	16	162
2018	9	19	11	25	17	20	4	1	20	34	18	169
2018	10	16	17	20	21	35	4	12	27	22	25	199
2018	11	19	22	31	18	26	8	12	32	27	32	227
2018	12	19	12	18	17	12	9	12	25	17	17	158
Total		191	147	286	264	262	53	96	302	246	241	2088

Unique Herd Breakdowns		DVO_CODE									
Year	Armagh	Ballymena	Coleraine	Dungannon	Enniskillen	L'Derry	Mallusk	Newry	Nt'Ards	Omagh	Total Herds
2018	248	194	376	381	335	61	125	440	320	326	2806

Tuberculosis: number of reactor herds by month and by DVO in 2017 and unique herd breakdowns during the year

2017		DVO_CODE										
Year	Month	Armagh	Ballymena	Coleraine	Dungannon	Enniskillen	L'Derry	Mallusk	Newry	Nt'Ards	Omagh	Total
2017	1	31	22	24	32	20	7	9	38	22	29	234
2017	2	15	16	19	19	22	2	11	33	20	16	173
2017	3	19	15	27	30	21	1	17	38	28	29	225
2017	4	19	13	27	23	24	2	9	27	26	28	198
2017	5	11	8	24	15	17	2	7	34	16	20	154
2017	6	9	8	18	25	16	1	4	20	24	16	141
2017	7	11	7	9	9	8	3	4	29	15	18	113
2017	8	21	16	5	23	20	1	5	24	20	8	143
2017	9	22	12	20	18	30	3	6	24	15	21	171
2017	10	16	18	17	20	26	4	15	27	26	32	201
2017	11	21	9	31	42	22	9	16	47	17	42	256
2017	12	19	14	18	36	20	4	17	24	16	31	199
Total		214	158	239	292	246	39	120	365	245	290	2208

Unique Herd Breakdowns		DVO_CODE									
Year	Armagh	Ballymena	Coleraine	Dungannon	Enniskillen	L'Derry	Mallusk	Newry	Nt'Ards	Omagh	Total Herds
2017	286	179	317	391	302	46	136	487	336	369	2849

A herd is defined as being a TB reactor herd if it had at least one TB reactor animal in that month and no TB reactor animals during the previous 12 months.

A TB unique herd breakdown is defined as a herd which has had at least one TB reactor during the specified calendar year irrespective of any TB reactors during the previous calendar year.

Tuberculosis: number of reactor animals by month and by DVO 2019

2019		DVO_CODE										
Year	Month	Armagh	Ballymena	Coleraine	Dungannon	Enniskillen	L'Derry	Mallusk	Newry	Nt'Ards	Omagh	Total
2019	1	96	70	71	262	197	24	48	238	123	126	1255
2019	2	120	53	83	73	97	32	64	180	151	99	952
2019	3											0
2019	4											0
2019	5											0
2019	6											0
2019	7											0
2019	8											0
2019	9											0
2019	10											0
2019	11											0
2019	12											0
Total		216	123	154	335	294	56	112	418	274	225	2207

Tuberculosis: number of reactor animals by month and by DVO 2018

2018		DVO_CODE										
Year	Month	Armagh	Ballymena	Coleraine	Dungannon	Enniskillen	L'Derry	Mallusk	Newry	Nt'Ards	Omagh	Total
2018	1	71	37	96	199	178	20	88	233	180	206	1308
2018	2	40	69	121	186	262	24	71	159	123	149	1204
2018	3	81	69	122	308	199	15	90	307	116	327	1634
2018	4	117	22	166	165	186	12	48	305	101	186	1308
2018	5	64	34	99	175	159	14	17	258	81	222	1123
2018	6	54	150	101	142	117	12	24	186	146	116	1048
2018	7	95	20	120	140	141	29	2	207	189	128	1071
2018	8	121	41	136	164	157	25	19	228	213	223	1327
2018	9	113	45	101	110	229	10	41	242	179	156	1226
2018	10	144	59	173	153	256	22	91	204	138	195	1435
2018	11	94	130	200	110	149	39	80	271	272	225	1570
2018	12	131	60	96	193	114	26	41	191	100	123	1075
Total		1125	736	1531	2045	2147	248	612	2791	1838	2256	15329

Tuberculosis: number of reactor animals by month and by DVO 2017

2017		DVO_CODE										
Year	Month	Armagh	Ballymena	Coleraine	Dungannon	Enniskillen	L'Derry	Mallusk	Newry	Nt'Ards	Omagh	Total
2017	1	266	73	113	145	219	34	23	323	241	135	1572
2017	2	82	59	129	109	200	3	47	298	180	122	1229
2017	3	238	52	150	154	193	30	156	285	179	146	1583
2017	4	193	33	102	154	191	6	42	203	169	132	1225
2017	5	54	81	133	100	121	2	28	254	92	89	954
2017	6	34	26	211	146	184	4	15	272	167	93	1152
2017	7	111	34	91	88	232	12	54	233	169	108	1132
2017	8	45	145	67	220	279	2	42	236	187	84	1307
2017	9	152	55	144	161	219	14	37	306	125	168	1381
2017	10	122	52	99	200	304	8	36	346	123	133	1423
2017	11	94	65	102	449	216	30	73	322	158	227	1736
2017	12	108	64	98	236	172	14	74	275	62	152	1255
Total		1499	739	1439	2162	2530	159	627	3353	1852	1589	15949

A TB reactor animal is defined as an animal where the manual interpretation field for a skin test is positive ('P') with the first test date being taken as the time at which the animal became a reactor. Animals with lesions at routine slaughter ('LRS') are not taken into account.

Month = February 2019

Ref.		Total	Armagh	Ballymena	Coleraine	Dungannon	Enniskillen	Mallusk	L'derry	Newry	Nt'ards	Omagh
b16	No. herds with any test completed in month	3669	397	257	439	427	446	226	125	646	327	379
b17	No. herds with any test, from start of year	7728	796	511	931	870	961	534	257	1321	692	855
b29	All herds with any test, from start of year	7967	807	528	969	911	984	546	270	1347	725	880
b18	No. herds with any test, from start of year (no cattle)	239	11	17	38	41	23	12	13	26	33	25
b19	No. herds with herd test completed in month	3389	345	242	401	397	420	193	108	615	317	351
b20	No. herds with herd test, from start of year	7074	694	477	853	788	890	473	237	1236	656	770
b30	All herds with herd test, from start of year	7311	705	494	891	829	913	485	250	1260	689	795
b21	No. herds with herd test, from start of year (no cattle)	237	11	17	38	41	23	12	13	24	33	25
b22	No. herds with herd test during last 12 months	22607	2237	1356	2484	2723	2954	1562	866	3691	1864	2870
b31	No. herds with herd test during last 13-24 months	22881	2282	1367	2509	2782	2962	1570	882	3705	1894	2928
b28	No. herds with herd test during 2018	22656	2220	1362	2484	2733	2957	1566	871	3703	1874	2886
b23	No. herds with herd test during 2017	22978	2293	1368	2507	2794	2986	1581	884	3725	1891	2949
b24	No. herds with herd test during 2016	23345	2297	1387	2557	2840	3057	1615	881	3750	1940	3021
b39	No. herds with herd test during 2015	23604	2304	1417	2610	2875	3121	1654	873	3748	1939	3063
b32	No. herds with herd test during 2014	23149	2274	1395	2490	2829	3049	1621	890	3658	1892	3051
b25	No. herds with any risk test completed	3676	342	279	456	429	476	215	97	685	341	356
b26	No. herds with herd risk test completed	2710	197	231	365	299	390	126	64	535	262	241
b27	No. herds with restricted herd test completed	1682	171	112	200	209	210	76	42	277	195	190

Month = February 2019

Ref	Total	Armagh	Ballymena	Coleraine	Dungannon	Enniskillen	Mallusk	L'derry	Newry	Nt'ards	Omagh	
c1	Total number of tests in current month	4297	465	301	521	524	478	283	139	771	380	435
c2	Total number of tests from start of year	9214	985	599	1103	1060	1058	666	320	1606	822	995
c3	No. tests during the same time period in the previous year	9234	957	589	1074	1156	1016	757	315	1480	847	1043
c4	% change between years	-0.2	2.8	1.7	2.6	-9.1	4.0	-13.7	1.6	7.8	-3.0	-4.8
c5	No. tests in the previous 12 months	50248	5308	3239	5761	6533	5914	3297	1543	8341	4480	5832
c6	No. animal tests in current month	285741	28998	21235	37765	33667	26980	22610	8715	41241	32082	32448
c7	No. animal tests from start of year	588162	56076	43980	84155	61681	57104	46082	21365	82720	66871	68128
c8	No. animal tests during the same time period in the previous year	589214	57342	45206	84482	63221	52552	51825	21531	81232	67714	64109
c9	% change between years	-0.2	-2.3	-2.8	-0.4	-2.5	8.0	-12.5	-0.8	1.8	-1.3	5.9
c10	No. animal tests in previous 12 months	3283675	314259	242124	468116	385053	313484	234234	98971	475782	379144	372508
c11	No. cattle herds eligible for TB testing	25299	2522	1505	2775	3039	3233	1782	988	4084	2129	3242
c12	No. cattle eligible for TB testing	1597706	161871	110368	207871	179710	156156	136733	61625	216501	169595	197276
c13	No. restricted herd tests during month	854	94	50	97	115	105	41	25	141	104	82
c14	No. animals tested	130931	12512	8054	17015	16342	13330	10020	3002	15819	18883	15954
c15	No. herd tests during month	3389	345	242	401	397	420	193	108	615	317	351
c16	No. animals tested	283312	28651	21053	37527	33389	26875	22251	8669	40764	31861	32272
c17	No. individual tests during month	908	120	59	120	127	58	90	31	156	63	84
c18	No. animals tested	2429	347	182	238	278	105	359	46	477	221	176
c23	No. animals TB tested since start of year	583171	55602	43657	83774	61271	56658	45811	21249	81655	66470	67772
c19	No. animals TB tested in previous 12 months	1747561	189154	126303	235798	214099	172395	151153	66681	256554	195880	216701
c24	No. animals TB tested in previous 13-24 months	1756173	191356	126012	235672	215081	172893	151516	66047	253929	194172	220803
c22	No. animals TB tested in 2018	1744432	188181	127178	237125	214744	173248	150915	66810	256145	196845	216977
c20	No. animals TB tested in 2017	1750170	190842	125843	235774	215867	174063	152684	66667	253109	193787	221579
c21	No. animals TB tested in 2016	1709508	184410	120059	232831	209246	170575	148773	67744	243436	184600	219947
c26	No. animals TB tested in 2015	1662355	173129	118652	230608	200883	169615	144926	67583	230622	180647	213478
c25	No. animals TB tested in 2014	1607660	166774	117083	214490	191534	163019	143992	61765	225643	177960	207187

Month = February 2019

Ref		Total	Armagh	Ballymena	Coleraine	Dungannon	Enniskillen	Mallusk	L'derry	Newry	Nt'ards	Omagh
	<i>All Herds</i>											
f1	No. of Officially Tuberculosis Free Herds (OTF)	26809	2657	1591	3036	3232	3346	1994	1167	4268	1986	3532
f2	No. of Officially Tuberculosis Suspended Herds (OTS)	1109	149	49	99	118	86	132	30	200	129	117
f3	No. of Officially Tuberculosis Withdrawn Herds (OTW)	2046	235	126	213	243	180	134	49	386	281	199
f4	% herds that are OTF	89.5	87.4	90.1	90.7	90.0	92.6	88.2	93.7	87.9	82.9	91.8
f5	% herds that are OTS	3.7	4.9	2.8	3.0	3.3	2.4	5.8	2.4	4.1	5.4	3.0
f6	% herds that are OTW	6.8	7.7	7.1	6.4	6.8	5.0	5.9	3.9	8.0	11.7	5.2
	<i>Operational Herds</i>											
	No. of Officially Tuberculosis Free Herds (OTF)	21405	2094	1274	2371	2588	2824	1485	875	3440	1647	2807
	No. of Officially Tuberculosis Suspended Herds (OTS)	928	115	48	94	97	72	99	28	168	110	97
	No. of Officially Tuberculosis Withdrawn Herds (OTW)	1947	217	126	210	233	176	117	47	369	270	182
	% herds that are OTF	88.2	86.3	88.0	88.6	88.7	91.9	87.3	92.1	86.5	81.3	91.0
	% herds that are OTS	3.8	4.7	3.3	3.5	3.3	2.3	5.8	2.9	4.2	5.4	3.1
	% herds that are OTW	8.0	8.9	8.7	7.9	8.0	5.7	6.9	4.9	9.3	13.3	5.9

		Month = October 2018										
		(Data lagged by 4 months)										
Ref		Total	Armagh	Ballymena	Coleraine	Dungannon	Enniskillen	Mallusk	L'derry	Newry	Nt'ards	Omagh
e19	Num. TB culture positive animals that were not TB reactors in last 12 months	845	104	24	78	121	39	39	7	224	129	80
e20	Num. TB culture positive animals that were not TB reactors in last 13-24 months	798	90	39	74	104	34	51	13	193	139	61
e3	Num. TB culture positive animals that were not TB reactors in 2017	782	91	41	83	113	40	51	8	168	128	59
e4	Num. TB culture positive animals that were not TB reactors in 2016	714	64	35	89	101	36	34	13	173	104	65
e5	Num. TB culture positive animals that were not TB reactors in 2015	676	71	41	95	84	27	38	18	120	112	70
e6	Num. TB culture positive animals that were not TB reactors in 2014	575	68	37	54	66	38	53	12	100	80	67
e2	Num. TB culture positive animals that were not TB reactors in 2013	583	63	33	32	98	28	30	7	131	92	69
e21	No. herds with TB culture positive animals that were not TB reactors in last 12 months	505	69	18	49	67	25	27	7	115	73	55
e22	No. herds with TB culture positive animals that were not TB reactors in last 13-24 months	476	52	28	44	62	24	34	12	99	83	38
e9	No. herds with TB culture positive animals that were not TB reactors in 2017	466	56	28	43	62	26	31	8	93	77	42
e10	No. herds with TB culture positive animals that were not TB reactors in 2016	469	45	21	57	63	26	31	11	100	68	47
e11	No. herds with TB culture positive animals that were not TB reactors in 2015	449	50	25	70	55	20	27	12	67	78	45
e12	No. herds with TB culture positive animals that were not TB reactors in 2014	372	47	25	37	48	27	27	10	66	51	34
e8	No. herds with TB culture positive animals that were not TB reactors in 2013	381	50	14	30	46	20	20	5	83	60	53
e23	% of TB animals that were TB culture positive that were not TB reactors in last 12 months	5.1	8.6	3.4	5.2	4.7	1.7	5.8	3.0	7.1	7.1	3.4
e24	% of TB animals that were TB culture positive that were not TB reactors in last 13-24 months	4.8	5.7	5.6	4.5	5.1	1.3	7.8	7.9	5.7	6.4	4.0
e15	% of TB animals that were TB culture positive that were not TB reactors in 2017	4.7	5.7	5.3	5.5	5.0	1.6	7.5	4.8	4.8	6.5	3.6
e16	% of TB animals that were TB culture positive that were not TB reactors in 2016	5.6	6.0	10.9	6.3	5.9	1.9	7.8	7.5	8.9	6.0	3.3
e17	% of TB animals that were TB culture positive that were not TB reactors in 2015	5.8	7.5	10.0	7.8	6.4	2.2	9.3	3.9	5.8	6.5	3.7
e18	% of TB animals that were TB culture positive that were not TB reactors in 2014	6.1	10.4	8.3	5.0	8.7	2.9	13.1	8.9	5.2	5.4	5.5
e14	% of TB animals that were TB culture positive that were not TB reactors in 2013	6.6	7.1	4.2	4.4	13.4	2.2	9.0	9.1	8.4	6.4	6.5

		Month = October 2018										
Ref	(Data lagged by 4 months)	Total	Armagh	Ballymena	Coleraine	Dungannon	Enniskillen	Mallusk	L'derry	Newry	Nt'ards	Omagh
g31	No. of confirmed TB reactors during last 12 months	6580	487	276	606	1066	966	229	91	1115	846	898
g32	No. of confirmed TB reactors during last 13-24 months	7175	698	362	830	831	1051	330	78	1247	1016	732
g3	No. of confirmed TB reactors 2017	7058	692	392	735	884	976	334	72	1323	925	725
g4	No. of confirmed TB reactors 2016	5339	429	145	714	807	759	174	98	622	801	790
g5	No. of confirmed TB reactors 2015	5306	428	228	658	591	561	194	284	784	718	860
g6	No. of confirmed TB reactors 2014	4346	294	229	591	392	561	156	84	725	722	592
g2	No. of confirmed TB reactors 2013	3765	377	422	373	255	520	116	40	541	636	485
g33	Total animals with confirmed TB during last 12 months	7425	591	300	684	1187	1005	268	98	1339	975	978
g34	Total animals with confirmed TB in last 13-24 months	7973	788	401	904	935	1085	381	91	1440	1155	793
g9	Total animals with confirmed TB in 2017	7840	783	433	818	997	1016	385	80	1491	1053	784
g10	Total animals with confirmed TB in 2016	6053	493	180	803	908	795	208	111	795	905	855
g11	Total animals with confirmed TB in 2015	5982	499	269	753	675	588	232	302	904	830	930
g12	Total animals with confirmed TB in 2014	4921	362	266	645	458	599	209	96	825	802	659
g8	Total animals with confirmed TB in 2013	4348	440	455	405	353	548	146	47	672	728	554
g35	Confirmed TB animal prevalence in last 12 months (%)	0.427	0.314	0.236	0.293	0.549	0.582	0.178	0.151	0.525	0.496	0.454
g36	Confirmed TB animal prevalence in last 13-24 months (%)	0.460	0.420	0.323	0.384	0.440	0.634	0.254	0.136	0.579	0.600	0.358
g15	Confirmed TB animal prevalence in 2017 (%)	0.448	0.410	0.344	0.347	0.462	0.584	0.252	0.120	0.589	0.543	0.354
g16	Confirmed TB animal prevalence in 2016 (%)	0.354	0.267	0.150	0.345	0.434	0.466	0.140	0.164	0.327	0.489	0.389
g17	Confirmed TB animal prevalence in 2015 (%)	0.360	0.288	0.226	0.326	0.336	0.347	0.160	0.447	0.392	0.459	0.436
g18	Confirmed TB animal prevalence in 2014 (%)	0.306	0.217	0.227	0.301	0.239	0.367	0.145	0.155	0.366	0.451	0.318
g14	Confirmed TB animal prevalence in 2013 (%)	0.268	0.255	0.399	0.189	0.179	0.330	0.104	0.076	0.299	0.402	0.263
g37	No. herds with confirmed TB in last 12 months	2405	229	135	283	366	274	112	42	396	288	280
g38	No. herds with confirmed TB in last 13-24 months	2440	247	159	264	303	254	124	44	413	330	302
g21	No. herds with confirmed TB in 2017	2493	254	158	260	339	253	126	42	429	315	317
g22	No. herds with confirmed TB in 2016	2045	205	99	281	293	198	87	45	297	247	293
g23	No. herds with confirmed TB in 2015	1936	163	103	296	222	201	101	77	272	228	273
g24	No. herds with confirmed TB in 2014	1606	126	123	199	171	181	85	50	253	195	223
g20	No. herds with confirmed TB in 2013	1648	157	120	174	144	210	77	29	293	206	238
g39	Confirmed TB herd prevalence in last 12 months (%)	10.63	10.28	9.99	11.38	13.39	9.28	7.16	4.87	10.72	15.43	9.74
g40	Confirmed TB herd prevalence in last 13-24 months (%)	10.60	10.73	11.57	10.42	10.89	8.50	7.77	4.97	11.11	17.36	10.29

g27	Confirmed TB herd prevalence in 2017 (%)	10.85	11.08	11.55	10.37	12.13	8.47	7.97	4.75	11.52	16.66	10.75
g28	Confirmed TB herd prevalence in 2016 (%)	8.76	8.92	7.14	10.99	10.32	6.48	5.39	5.11	7.92	12.73	9.70
g29	Confirmed TB herd prevalence in 2015 (%)	8.20	7.07	7.27	11.34	7.72	6.44	6.11	8.82	7.26	11.76	8.91
g30	Confirmed TB herd prevalence in 2014 (%)	6.94	5.54	8.82	7.99	6.04	5.94	5.24	5.62	6.92	10.31	7.31
g26	Confirmed TB herd prevalence in 2013 (%)	7.17	7.02	8.87	6.88	5.08	6.88	4.84	3.32	8.10	11.06	7.86

Explanatory Comments for Tuberculosis Statistics - B. Testing Herds

Ref	Data Title	Explanation
B16	No. herds with any test completed in month	Test of any disease status and size (herd or animal-level). Tests with no animals are excluded.
B17	No. herds with any test, from start of year	Test of any disease status and size (herd or animal-level) carried out on a herd since 1st January. Tests with no animals are excluded.
B29	All herds with any test, from start of year	Skin test of any disease status and size (herd or animal-level) carried out on a herd since 1st January. Tests with no animals are included.
B18	No. herds with any test, from start of year (no cattle)	Herd or individual test of any disease status (routine, risk or restricted) where no cattle were recorded at all such tests since 1st January.
B19	No. herds with herd test completed in month	Herd level test of any disease status (routine, risk or restricted) completed during the above month. Tests with no animals are excluded.
B20	No. herds with herd test, from start of year	Herd level test of any disease status (routine, risk or restricted) completed since 1st January. Tests with no animals are excluded.
B30	All herds with herd test, from start of year	Herd level test of any disease status (routine, risk or restricted) completed since 1st January. Tests with no animals are included.
B21	No. herds with herd test, from start of year (no cattle)	Herd level test of any disease status (routine, risk or restricted) where no cattle were recorded at all such herd tests since 1st January.
B22	No. herds with herd test during last 12 months	Herd level test of any disease status (routine, risk or restricted) completed in the 12 month period from the above month. Tests with no animals are excluded.
B31	No. herds with herd test during last 13-24 months	Herd level test of any disease status (routine, risk or restricted) completed in the 13-24 months from the above month. Tests with no animals are excluded.
B39	No. herds with herd test during the year	Herd level test of any disease status (routine, risk or restricted) completed in the calendar year. Tests with no animals are excluded.
B32	No. herds with herd test during the year	Herd level test of any disease status (routine, risk or restricted) completed in the calendar year. Tests with no animals are excluded.
B28	No. herds with herd test during the year	Herd level test of any disease status (routine, risk or restricted) completed in the calendar year. Tests with no animals are excluded.
B23	No. herds with herd test during the year	Herd level test of any disease status (routine, risk or restricted) completed in the calendar year. Tests with no animals are excluded.
B24	No. herds with herd test during the year	Herd level test of any disease status (routine, risk or restricted) completed in the calendar year. Tests with no animals are excluded.
B25	No. herds with any risk test completed	Herd has had a herd or individual level risk test since start of calendar year and number tested > 0.
B26	No. herds with herd risk test completed	Herd has had a herd level risk test since start of calendar year and number tested > 0.
B27	No. herds with restricted herd test completed	Herd has had a restricted herd test (RHT, RH1, RH2) since start of calendar year and number tested > 0.

Explanatory Comments for Tuberculosis Statistics - C. Testing Animals

Ref	Data Title	Explanation
C1	Total number of tests in current month	Number of herds and individual tests performed in the month stated above. Tests with no animals are excluded.
C2	Total number of tests from start of year	From 1st January. Tests with no animals are excluded.
C3	No. tests during the same time period in the previous year	From 1st January of previous year. Tests with no animals are excluded.
C4	% change between years	Difference between the number of tests carried out during the current year and the number carried out in the previous expressed as a percentage.
C5	No. tests in the previous 12 months	Last 12 month period from the above month. Tests with no animals are excluded.
C6	No. animal tests in current month	Animal test = a count of the number of animals tested within each herd or individual test. Some animals may have been tested multiple times during the year.
C7	No. animal tests from start of year	Number of animal tests carried out since 1st January.
C8	No. animal tests during the same time period in the previous year	Number of animal tests carried out from 1st January in the previous year over the same time interval as recorded for the current year.
C9	% change between years	Difference between the number of animal tests during the current year and the number carried out in the previous expressed as a percentage.
C10	No. animal tests in previous 12 months	Last 12 month period from the above month.
C11	No. cattle eligible for TB testing	Based on the average number of animals presented at TB herd tests over last 4 years.
C12	No. cattle herds eligible for TB testing	Based on cattle being presented for a TB herd tests over last 4 years. Herds with '0' cattle are excluded.

C13	No. restricted herd tests during month	All restricted herd tests (RHT, RH1 and RH2) carried out during the above month.
C14	No. animals tested	Total of the animals reported as being tested within restricted herd tests (RHT, RH1, RH2) during the above month.
C15	No. herd tests during month	Total of the animals reported as being tested within all herd tests during the above month.
C16	No. animals tested	Total of the animals reported as being tested within all herd tests during the above month.
C17	No. individual tests during month	Total of the animals reported as being tested within all individual tests during the above month.
C18	No. animals tested	Total of the animals reported as being tested within all individual tests during the above month.
C23	No. animals TB tested since start of year	Animals identified as having had at least one TB skin test since the start of the calendar year. Due to the same animals being sampled in different DVO areas, the 'Total' is not the sum of the DVO figures.
C19	No. animals TB tested in previous 12 months	Animals identified as having had at least one TB skin test during the last 12 month period from the above month. Due to the same animals being sampled in different DVO areas, the 'Total' is not the sum of the DVO figures.
C24	No. animals TB tested in previous 13-24 months	Animals identified as having had at least one TB skin test during the last 13-24 months from the above month. Due to the same animals being sampled in different DVO areas, the 'Total' is not the sum of the DVO figures.
C26	No. animals TB tested in the year	Animals identified as having had at least one TB skin test during the calendar year. Due to the same animals being sampled in different DVO areas, the 'Total' is not the sum of the DVO figures.
C25	No. animals TB tested in the year	Animals identified as having had at least one TB skin test during the calendar year. Due to the same animals being sampled in different DVO areas, the 'Total' is not the sum of the DVO figures.
C22	No. animals TB tested in the year	Animals identified as having had at least one TB skin test during the calendar year. Due to the same animals being sampled in different DVO areas, the 'Total' is not the sum of the DVO figures.
C20	No. animals TB tested in the year	Animals identified as having had at least one TB skin test during the calendar year. Due to the same animals being sampled in different DVO areas, the 'Total' is not the sum of the DVO figures.
C21	No. animals TB tested in the year	Animals identified as having had at least one TB skin test during the calendar year. Due to the same animals being sampled in different DVO areas, the 'Total' is not the sum of the DVO figures.
Explanatory Comments for Tuberculosis Statistics - D. Results		
Ref	Data Title	Explanation
D1	No. of herds with TB reactors during month	A herd is included in this figure if the herd number had a TB skin test reactor during the above month.
D2	No. of new reactor herds during month	A herd is defined as being a TB reactor herd if it had at least one TB reactor animal in that month and no TB reactor animals during the previous 12 months.
D3	No. of new reactor herds since start of year	= Since 1st January
D4	No. of new reactor herds in the previous 12 months	Last 12 month period from the above month.
D26	No. of new reactor herds in previous 13-24 months	Last 13-24 month period from the above month.
D5	No. of TB reactor animals during month	A TB reactor animal is defined as an animal where the manual interpretation field for a skin test is positive ('P') with the first test date being taken as the time at which the animal became a reactor. Currently animals with lesions at routine slaughter (*LRS*) are not taken into account.
D6	No. of TB reactor animals since start of year	= Since 1st January
D7	No. of reactor animals in the previous 12 months	Last 12 month period from the above month.
D27	No. of reactor animals in previous 13-24 months	Last 13-24 month period from the above month.
D20	Cumulative herd incidence in year (%)	Number of NEW reactor herds since the start of the calendar year as a proportion of cattle herds which have presented cattle for a TB herd test during the same time period.
D9	Annual herd incidence over the last 12 months (%)	Number of NEW reactor herds during the last 12 months as a proportion of cattle herds which have presented cattle for a TB herd test during the same time period.
D28	Annual herd incidence over the last 13-24 months (%)	Number of NEW reactor herds during the last 13-24 months as a proportion of cattle herds which have presented cattle for a TB herd test during the same time period.
D38	In-year Herd Incidence (%)	Number of NEW reactor herds during the year as a proportion of cattle herds which have presented cattle for a TB herd test during the same time period.
D30	In-year Herd Incidence (%)	Number of NEW reactor herds during the year as a proportion of cattle herds which have presented cattle for a TB herd test during the same time period.
D16	In-year Herd Incidence (%)	Number of NEW reactor herds during the year as a proportion of cattle herds which have presented cattle for a TB herd test during the same time period.
D10	In-year Herd Incidence (%)	Number of NEW reactor herds during the year as a proportion of cattle herds which have presented cattle for a TB herd test during the same time period.
D11	In-year Herd Incidence (%)	Number of NEW reactor herds during the year as a proportion of cattle herds which have presented cattle for a TB herd test during the same time period.
D21	Cumulative animal incidence in year (%)	Number of reactor animals during the above month as a proportion of cattle which have been presented for a TB test during the same time period.
D12	Annual animal incidence over the last 12 months (%)	Number of reactor animals during the last 12 months as a proportion of cattle which have been presented for a TB test during the same time period.
D29	Annual animal incidence over the last 13-24 months (%)	Number of reactor animals during the last 13-24 months as a proportion of cattle which have been presented for a TB test during the same time period.
D39	In year Animal Incidence (%)	Number of reactor animals during the year as a proportion of cattle which have been presented for a TB herd test during the same time period.

D31	In year Animal Incidence (%)	Number of reactor animals during the year as a proportion of cattle which have been presented for a TB herd test during the same time period.
D15	In year Animal Incidence (%)	Number of reactor animals during the year as a proportion of cattle which have been presented for a TB herd test during the same time period.
D13	In year Animal Incidence (%)	Number of reactor animals during the year as a proportion of cattle which have been presented for a TB herd test during the same time period.
D14	In year Animal Incidence (%)	Number of reactor animals during the year as a proportion of cattle which have been presented for a TB herd test during the same time period.
D34	APT during current month	= The reactor disclosure rate per 1,000 animal tests current calendar month.
D22	APT since start of year	The reactor disclosure rate per 1,000 animal tests since the start of the calendar year.
D17	Current 12 month moving average APT	The reactor disclosure rate per 1,000 animal tests. Current refers to the rate over the last 12 months.
D42	In year APT	The reactor disclosure rate per 1,000 animal tests during the calendar year.
D40	In year APT	The reactor disclosure rate per 1,000 animal tests during the calendar year.
D32	In year APT	The reactor disclosure rate per 1,000 animal tests during the calendar year.
D18	In year APT	The reactor disclosure rate per 1,000 animal tests during the calendar year.
D19	In year APT	The reactor disclosure rate per 1,000 animal tests during the calendar year.
D23	No. negative in contacts since start of year	Number of animals taken as negative in contacts since the start of the year.
d46	No. Negative in contacts over last 12 months (%)	= Number of negative in contacts during the last 12 months
D43	No. negative in contacts during the year	Number of animals taken as negative in contacts during the year.
D41	No. negative in contacts during the year	Number of animals taken as negative in contacts during the year.
D33	No. negative in contacts during the year	Number of animals taken as negative in contacts during the year.
D24	No. negative in contacts during the year	Number of animals taken as negative in contacts during the year.
D25	No. negative in contacts during the year	Number of animals taken as negative in contacts during the year.
D37	Reactor removal time during the year	Figures given are median values for working days estimated from calendar days (calendar days multiplied by 0.685). Reactors which are not yet slaughtered or where they they were first declared as reactors at slaughter are excluded.
D45	Reactor removal time during the year	Figures given are median values for working days estimated from calendar days (calendar days multiplied by 0.685). Reactors which are not yet slaughtered or where they they were first declared as reactors at slaughter are excluded.
D35	Reactor removal time during the year	Figures given are median values for working days estimated from calendar days (calendar days multiplied by 0.685). Reactors which are not yet slaughtered or where they they were first declared as reactors at slaughter are excluded.
D44	Reactor removal time during the year	Figures given are median values for working days estimated from calendar days (calendar days multiplied by 0.685). Reactors which are not yet slaughtered or where they they were first declared as reactors at slaughter are excluded.
D36	Reactor removal time during the year	Figures given are median values for working days estimated from calendar days (calendar days multiplied by 0.685). Reactors which are not yet slaughtered or where they they were first declared as reactors at slaughter are excluded.

g35	Confirmed TB animal prevalence in last 12 months (%)	Number of TB reactors that were confirmed during the last 12 months by the presence of visible lesions at slaughter and/or by laboratory confirmation (histopathology and/or culture) plus the number of other animals where M. bovis was cultured from TB-like lesions found at slaughter during the last 12 months that were not identified as TB reactor animals divided by the number of animals tuberculin tested during the last 12 months expressed as a %
g36	Confirmed TB animal prevalence in last 13-24 months (%)	Number of TB reactors that were confirmed during the last 13-24 months by the presence of visible lesions at slaughter and/or by laboratory confirmation (histopathology and/or culture) plus the number of other animals where M. bovis was cultured from TB-like lesions found at slaughter during the last 13-24 months that were not identified as TB reactor animals divided by the number of animals tuberculin tested during the last 13-24 months expressed as a %
g18	Confirmed TB animal prevalence in year (%)	Number of TB reactors that were confirmed during the year by the presence of visible lesions at slaughter and/or by laboratory confirmation (histopathology and/or culture) plus the number of other animals where M. bovis was cultured from TB-like lesions found at slaughter during the year that were not identified as TB reactor animals divided by the number of animals tuberculin tested during the year expressed as a %
g14	Confirmed TB animal prevalence in year (%)	Number of TB reactors that were confirmed during the year by the presence of visible lesions at slaughter and/or by laboratory confirmation (histopathology and/or culture) plus the number of other animals where M. bovis was cultured from TB-like lesions found at slaughter during the year that were not identified as TB reactor animals divided by the number of animals tuberculin tested during the year expressed as a %
g15	Confirmed TB animal prevalence in year (%)	Number of TB reactors that were confirmed during the year by the presence of visible lesions at slaughter and/or by laboratory confirmation (histopathology and/or culture) plus the number of other animals where M. bovis was cultured from TB-like lesions found at slaughter during the year that were not identified as TB reactor animals divided by the number of animals tuberculin tested during the year expressed as a %
g16	Confirmed TB animal prevalence in year (%)	Number of TB reactors that were confirmed during the year by the presence of visible lesions at slaughter and/or by laboratory confirmation (histopathology and/or culture) plus the number of other animals where M. bovis was cultured from TB-like lesions found at slaughter during the year that were not identified as TB reactor animals divided by the number of animals tuberculin tested during the year expressed as a %
g17	Confirmed TB animal prevalence in year (%)	Number of TB reactors that were confirmed during the year by the presence of visible lesions at slaughter and/or by laboratory confirmation (histopathology and/or culture) plus the number of other animals where M. bovis was cultured from TB-like lesions found at slaughter during the year that were not identified as TB reactor animals divided by the number of animals tuberculin tested during the year expressed as a %
g37	No. herds with confirmed TB in last 12 months	Herds that had at least one confirmed TB animal during the last 12 months.
g38	No. herds with confirmed TB in last 13-24 months	Herds that had at least one confirmed TB animal during the last 13-24 months.
g24	No. herds with confirmed TB in year	Herds that had at least one confirmed TB animal during the year.
g20	No. herds with confirmed TB in year	Herds that had at least one confirmed TB animal during the year.
g21	No. herds with confirmed TB in year	Herds that had at least one confirmed TB animal during the year.
g22	No. herds with confirmed TB in year	Herds that had at least one confirmed TB animal during the year.
g23	No. herds with confirmed TB in year	Herds that had at least one confirmed TB animal during the year.
g39	Confirmed TB herd prevalence in last 12 months (%)	Number of herds that had at least one confirmed TB animal during the last 12 months divided the number of herds that presented cattle at a TB herd test expressed as a %.
g40	Confirmed TB herd prevalence in last 13-24 months (%)	Number of herds that had at least one confirmed TB animal during the last 13-24 months divided the number of herds that presented cattle at a TB herd test expressed as a %.
g30	Confirmed TB herd prevalence in year (%)	Number of herds that had at least one confirmed TB animal during the year divided the number of herds that presented cattle at a TB herd test expressed as a %.
g26	Confirmed TB herd prevalence in year (%)	Number of herds that had at least one confirmed TB animal during the year divided the number of herds that presented cattle at a TB herd test expressed as a %.
g27	Confirmed TB herd prevalence in year (%)	Number of herds that had at least one confirmed TB animal during the year divided the number of herds that presented cattle at a TB herd test expressed as a %.
g28	Confirmed TB herd prevalence in year (%)	Number of herds that had at least one confirmed TB animal during the year divided the number of herds that presented cattle at a TB herd test expressed as a %.
g29	Confirmed TB herd prevalence in year (%)	Number of herds that had at least one confirmed TB animal during the year divided the number of herds that presented cattle at a TB herd test expressed as a %.