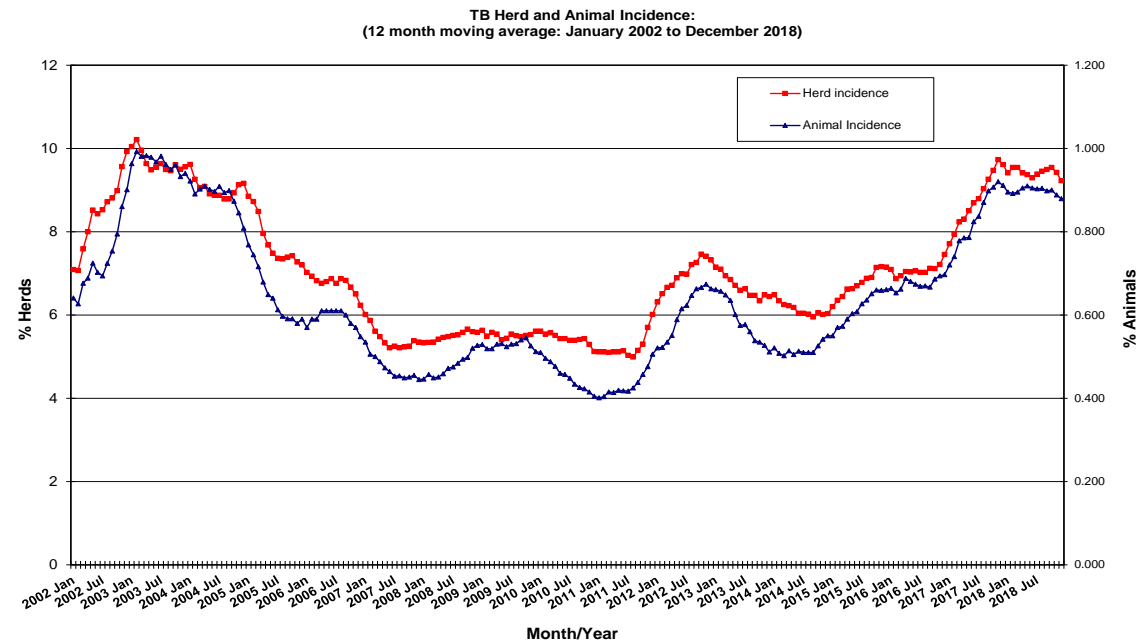
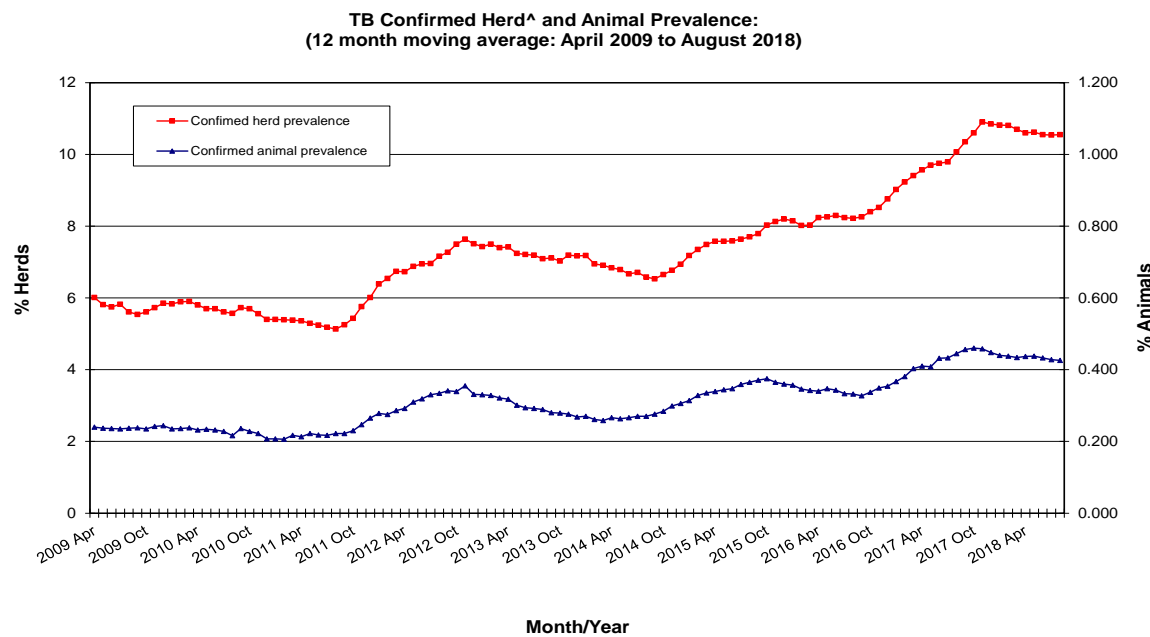


Tuberculosis: Statistics for December 2018



Disease statistics

Annual herd incidence over the last 12 months (%)	9.22	
Annual herd incidence over the last 13-24 months (%)	9.61	
2017 Herd Incidence (%)	9.61	
Annual animal incidence over the last 12 months (%)	0.879	
Annual animal incidence over the last 13-24 months (%)	0.911	
2017 Animal Incidence (%)	0.911	
Confirmed TB herd prevalence in last 12 months (%)	10.55	for Month = August 2018
Confirmed TB herd prevalence in last 13-24 months (%)	10.07	for Month = August 2018
Confirmed TB herd prevalence in 2017 (%)	10.85	for Month = August 2018
Confirmed TB animal prevalence in last 12 months (%)	0.426	for Month = August 2018
Confirmed TB animal prevalence in last 13-24 months (%)	0.445	for Month = August 2018
Confirmed TB animal prevalence in 2017 (%)	0.448	for Month = August 2018



TB skin test reactors

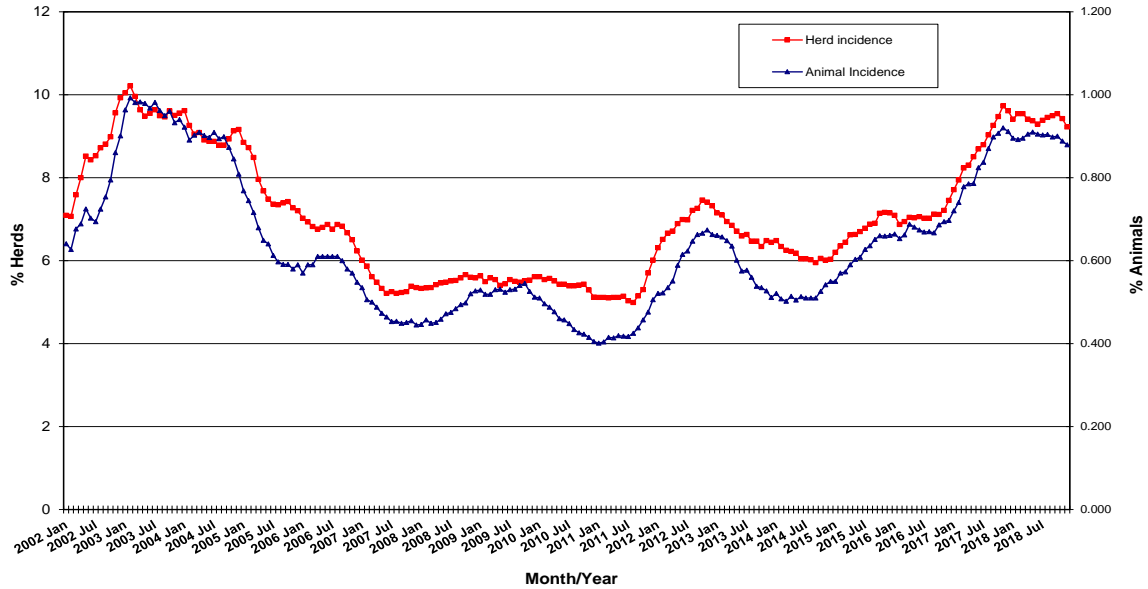
No. of TB reactor animals during month	1,075
No. of TB reactor animals since start of year	15,329
No. of reactor animals in the previous 12 months	15,329
No. of reactor animals in the previous 13-24 months	15,949

Herds & animals tested

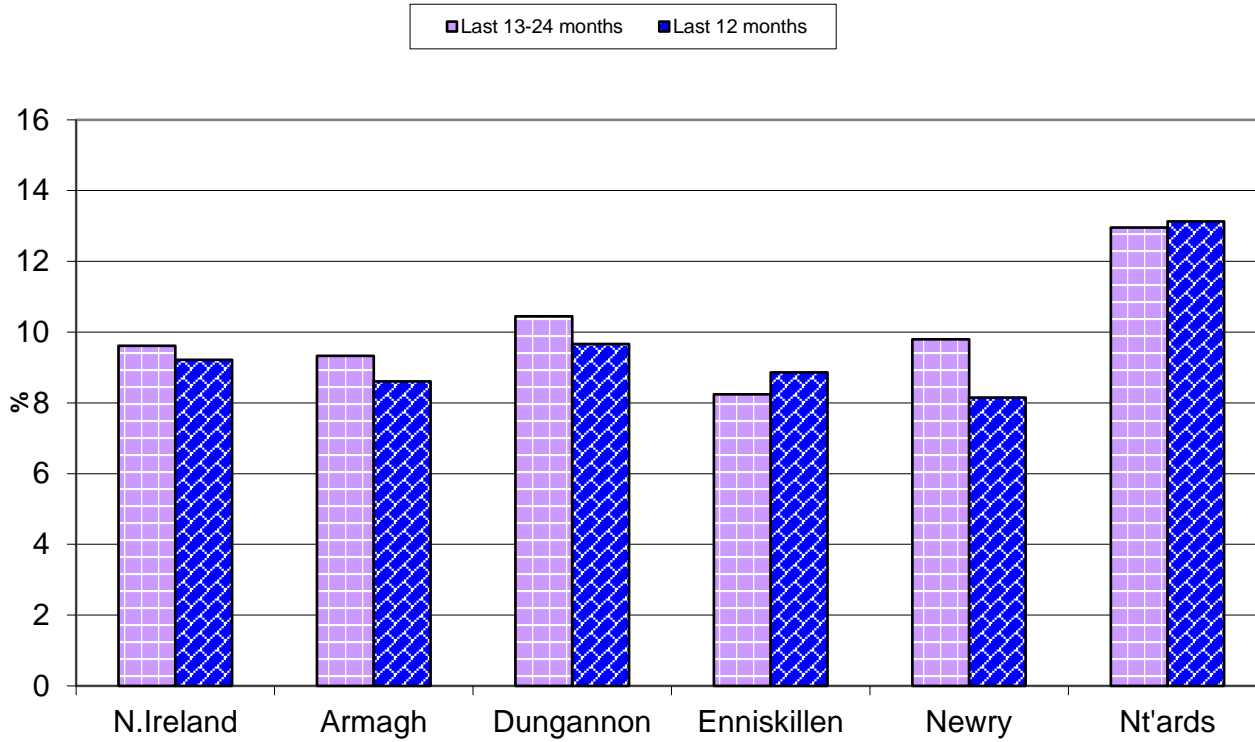
No. herds with herd test during last 12 months	22,656
No. herds with herd test during last 13-24 months	22,978
No. herds with herd test during 2017	22,978
No. animals TB tested since start of year	1,744,432
No. animals TB tested in previous 12 months	1,744,432
No. animals TB tested in previous 13-24 months	1,750,189
No. animals TB tested in 2017	1,750,170

For definitions of these parameters, refer to the 'Explanatory Comments' worksheet: [Click here](#)

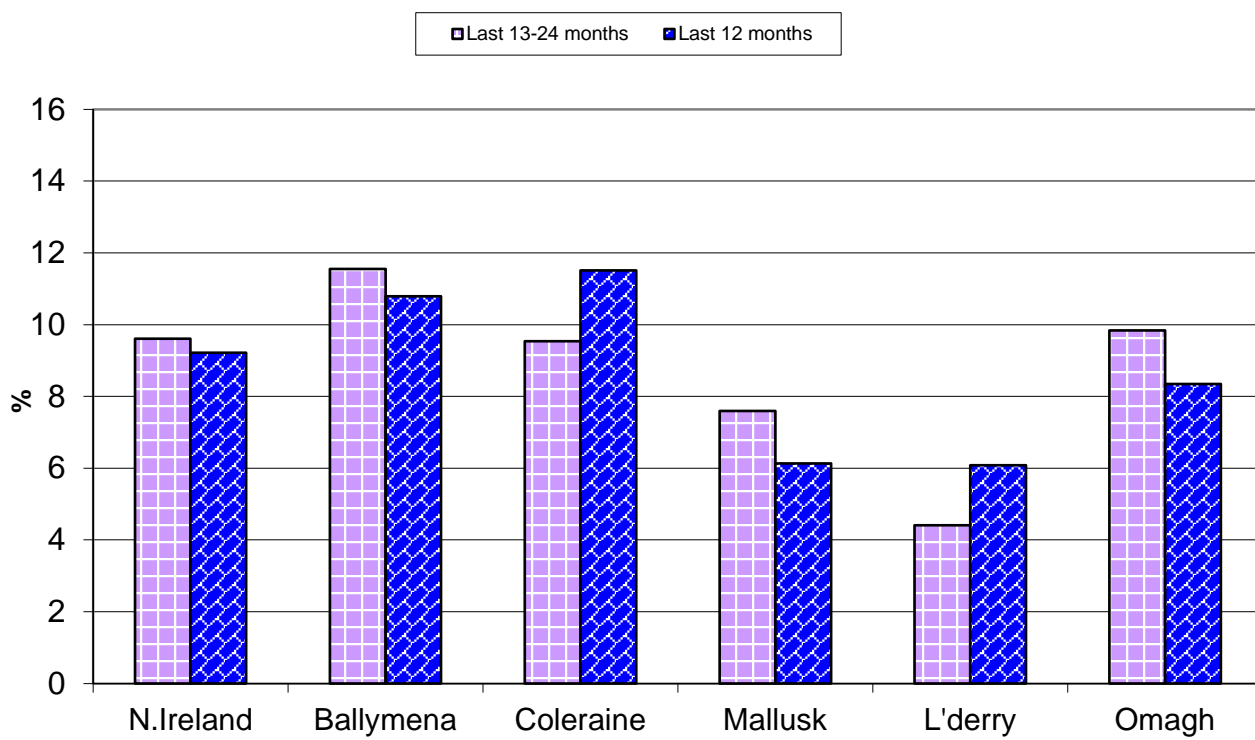
TB Herd and Animal Incidence:
(12 month moving average: January 2002 to December 2018)

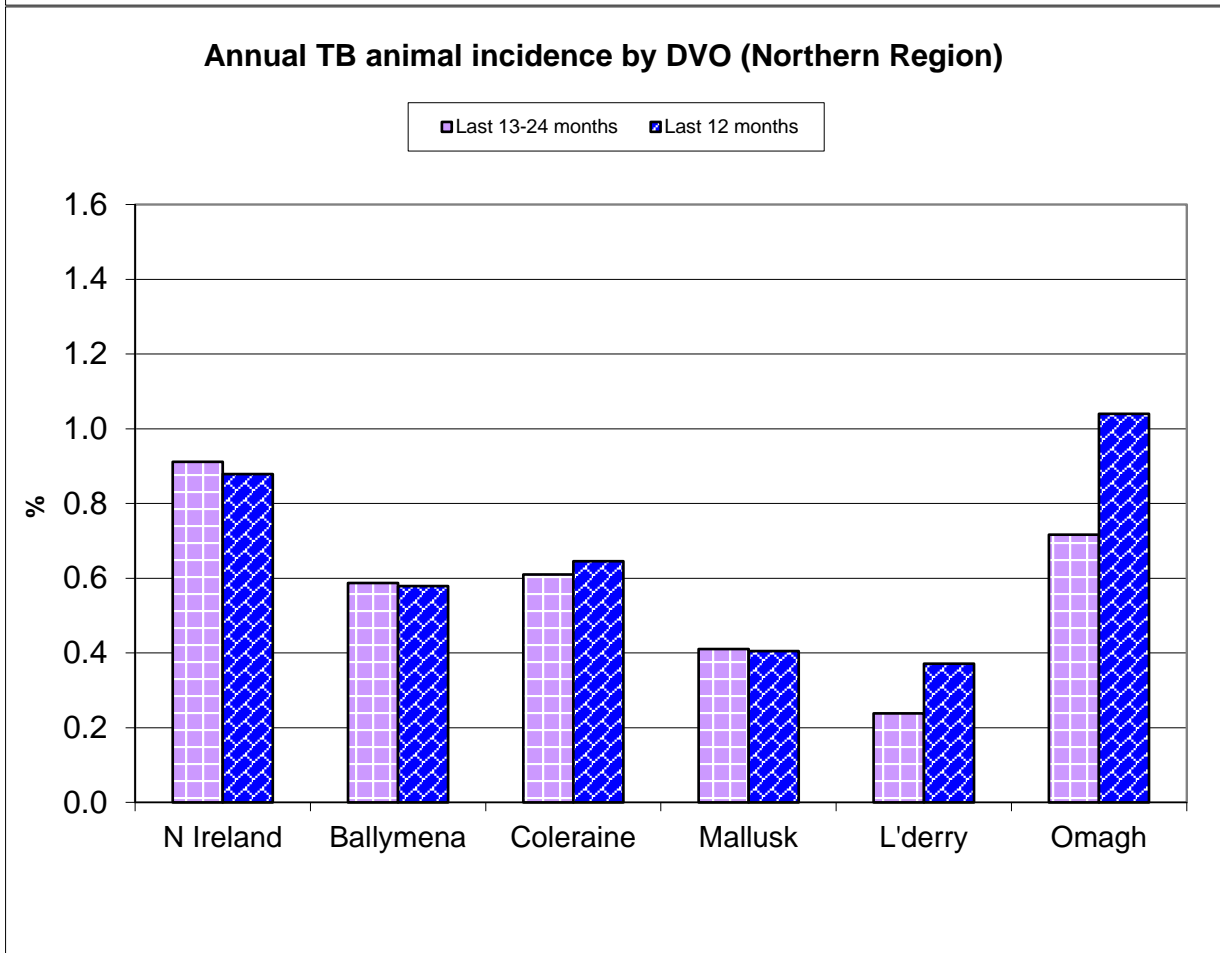
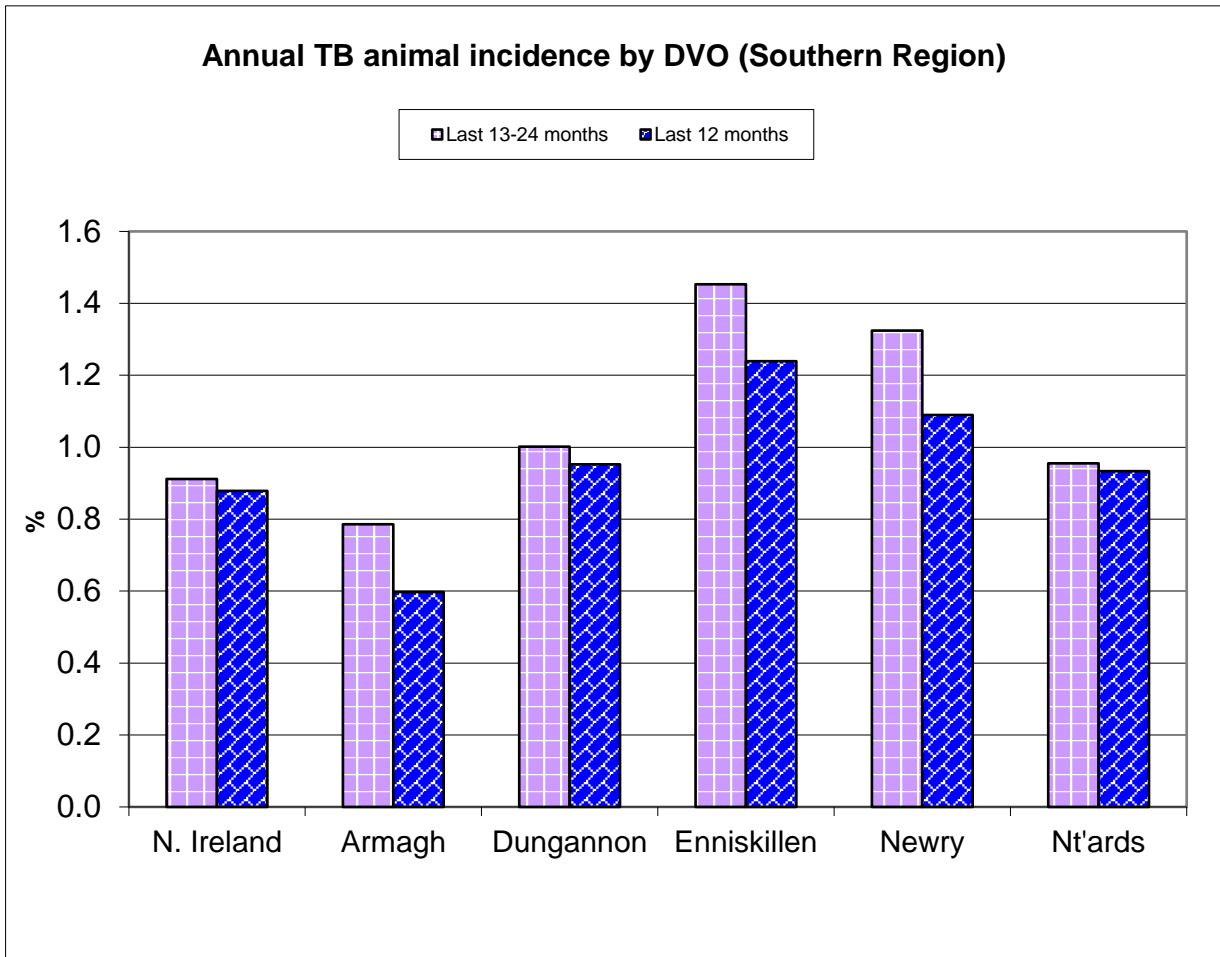


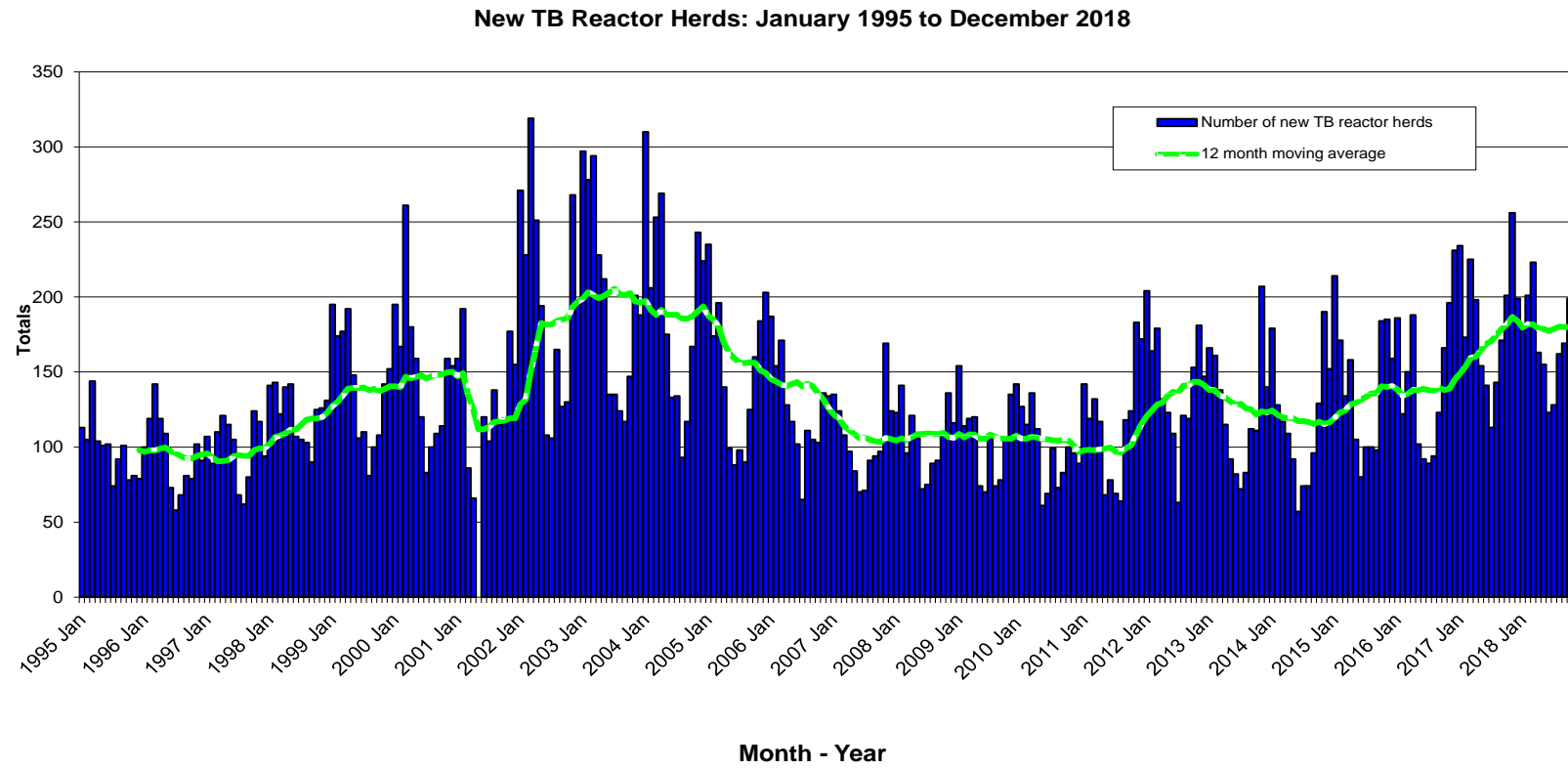
Annual TB herd incidence by DVO (Southern Region)



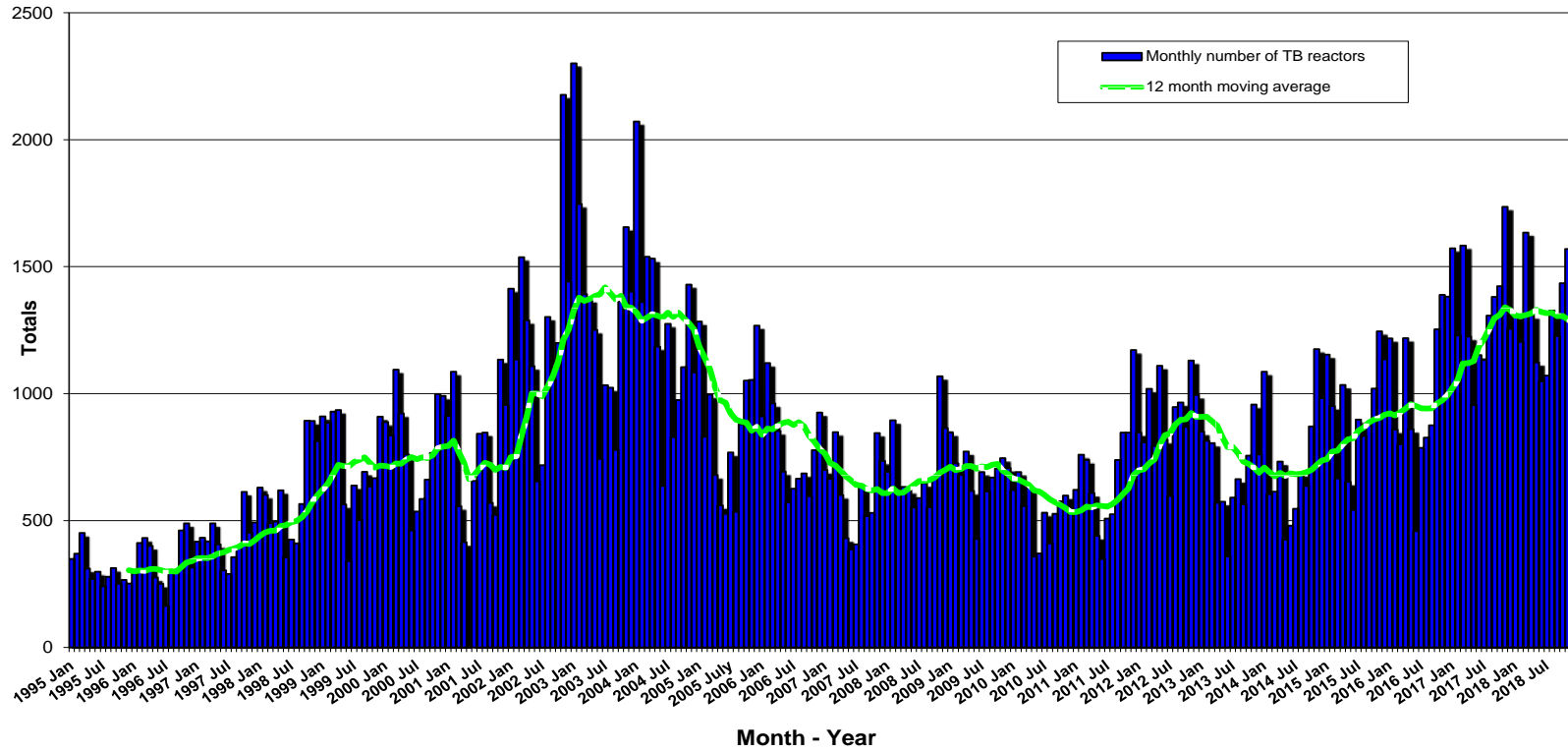
Annual TB herd incidence by DVO (Northern Region)



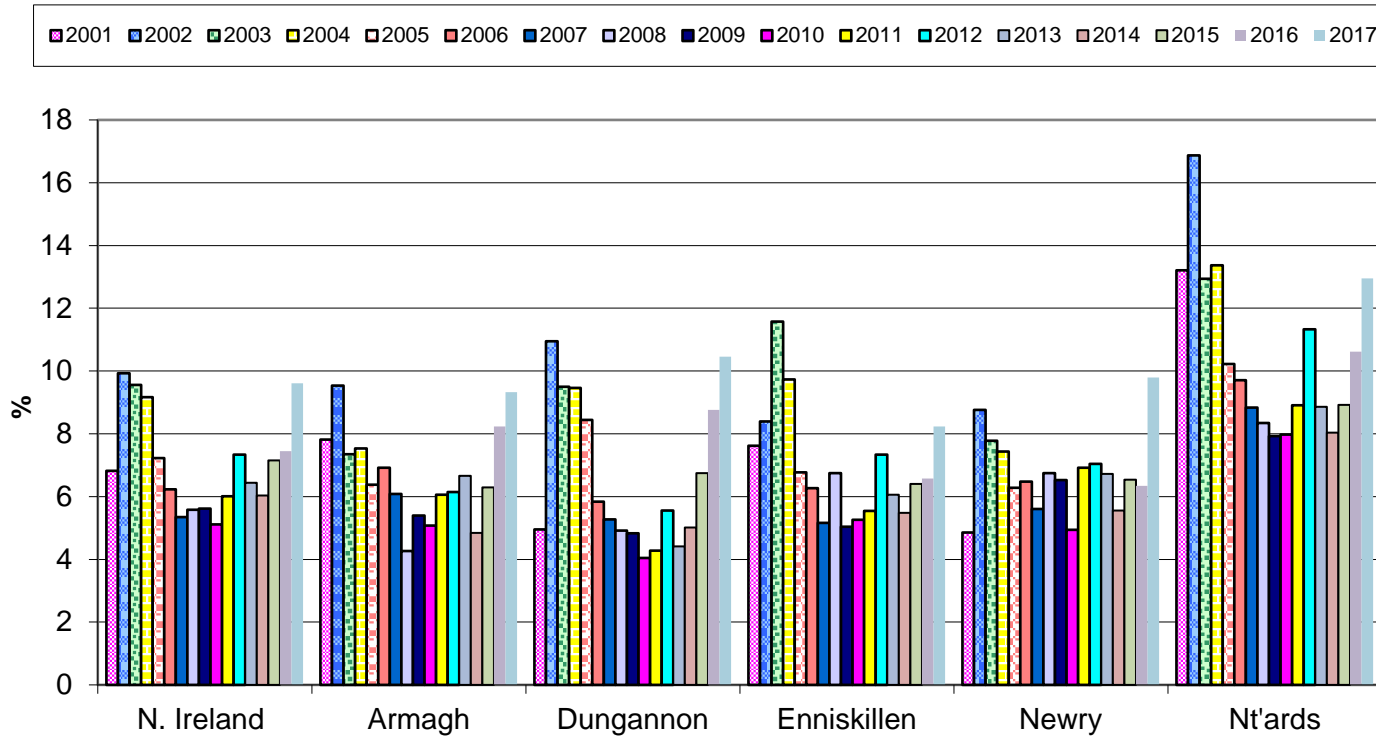




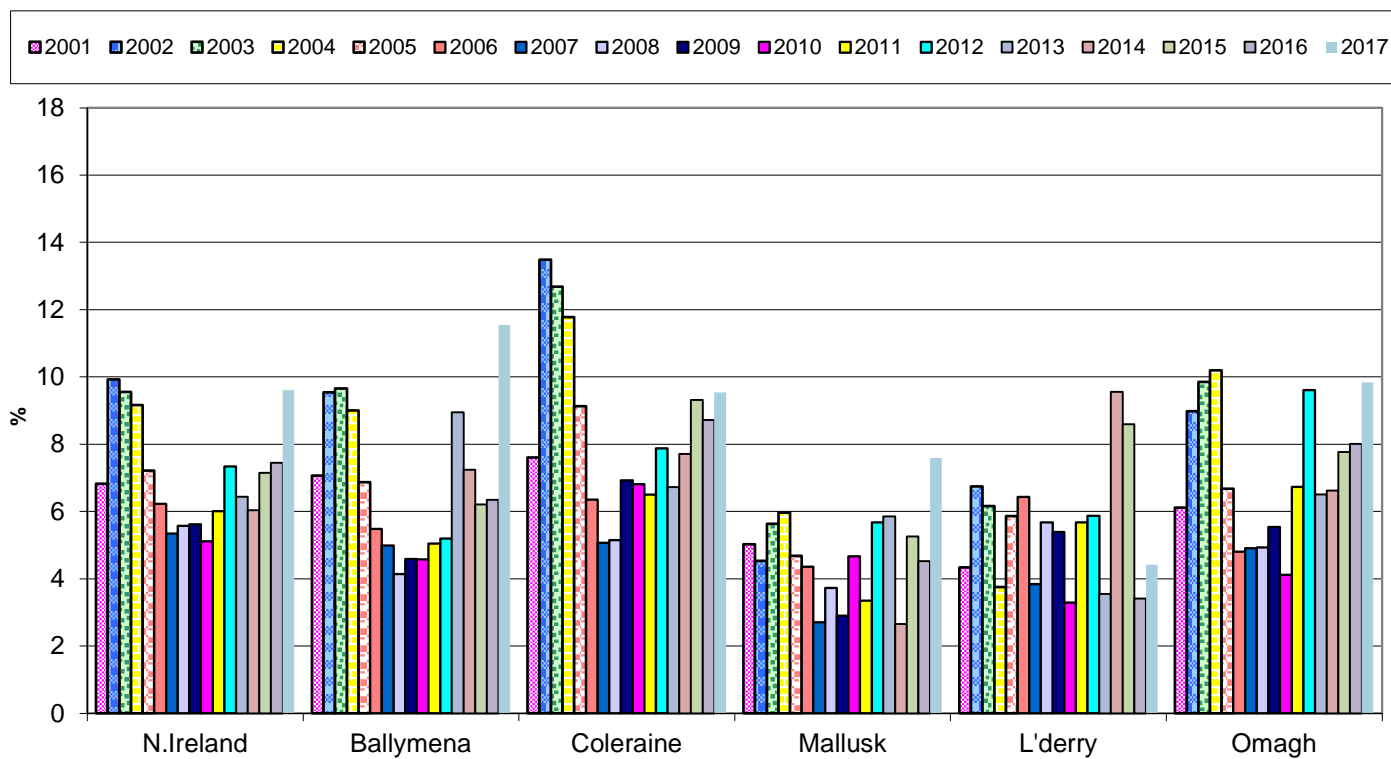
TB Reactors: January 1995 to December 2018

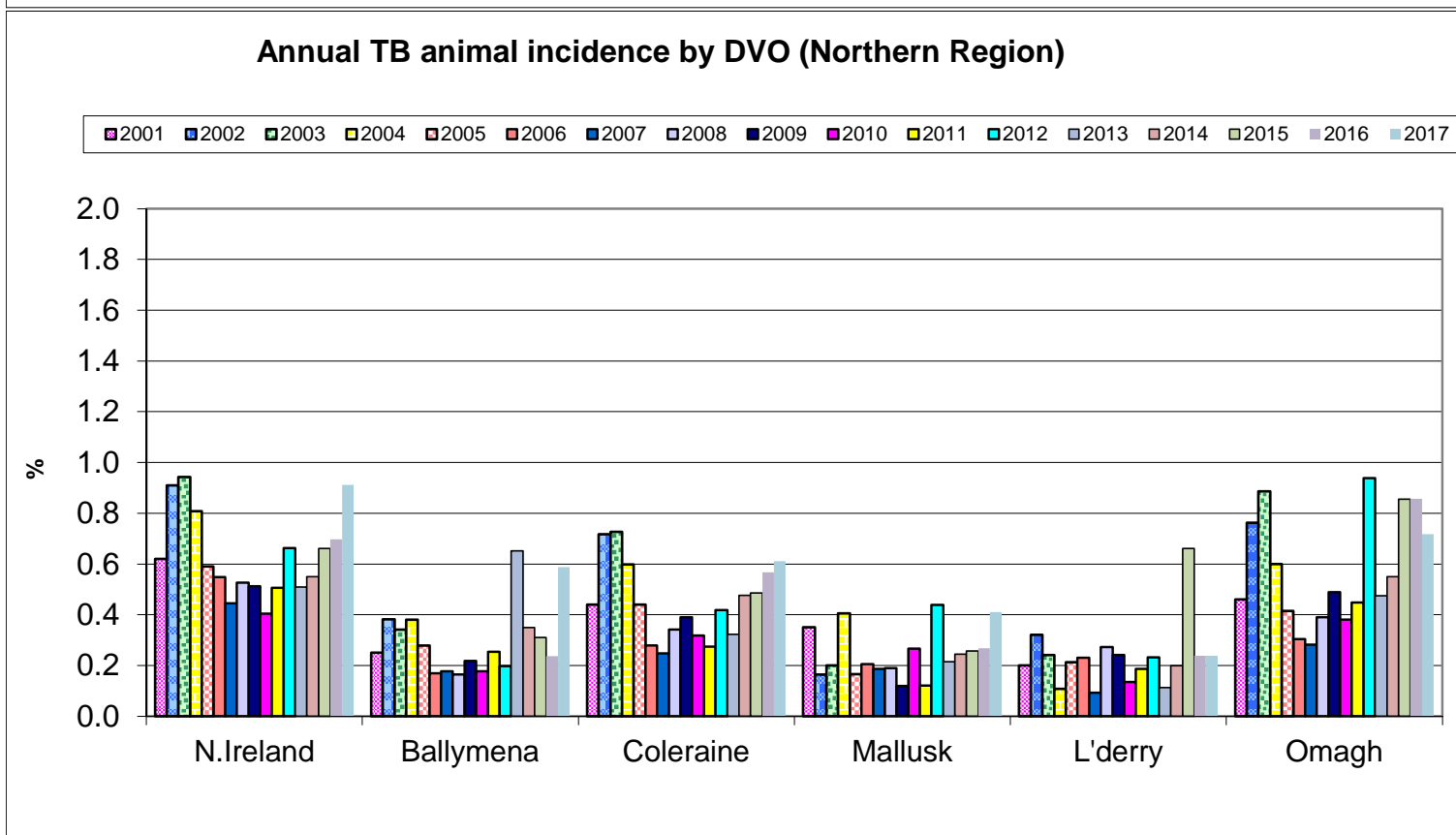
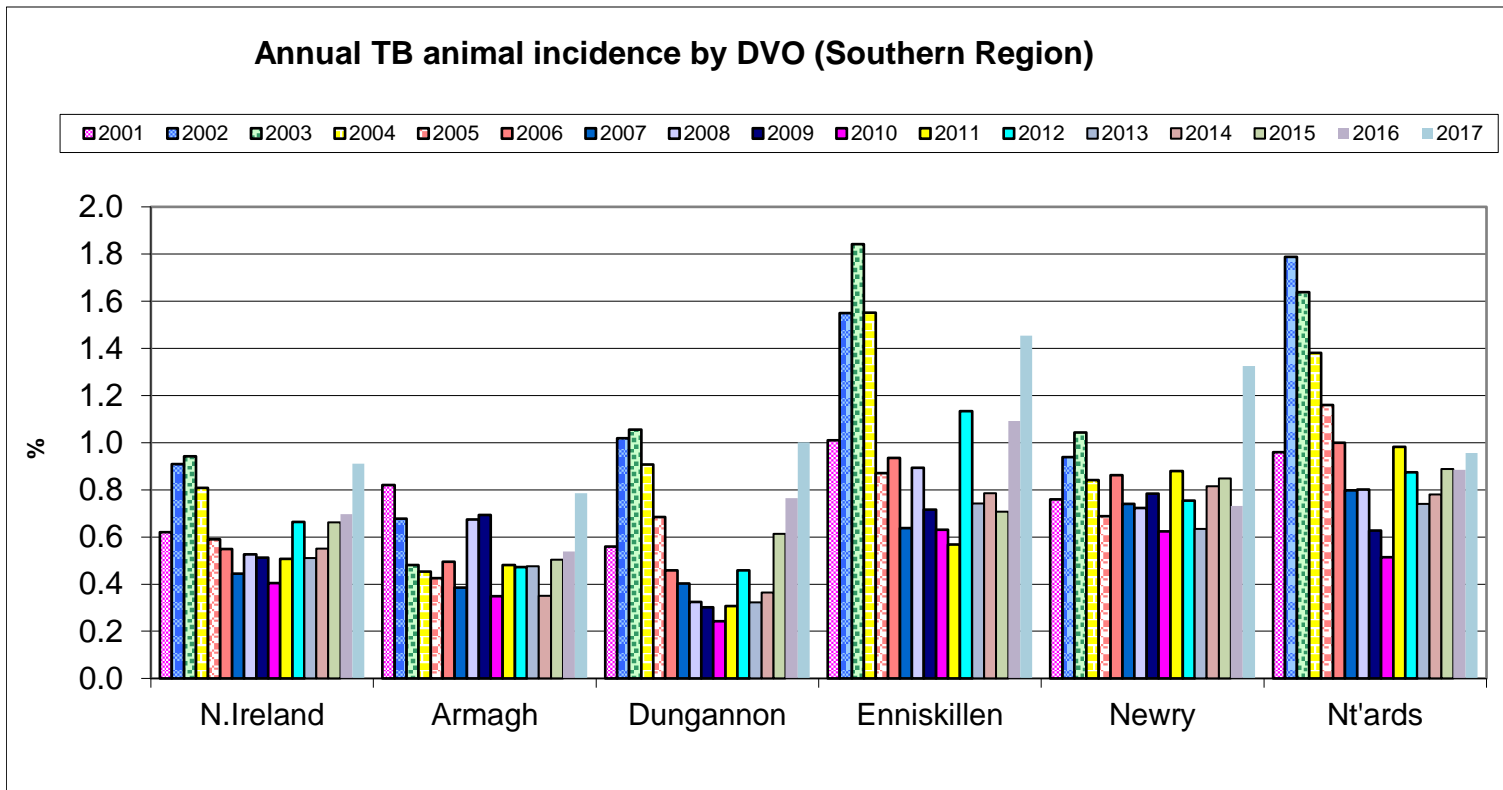


Annual TB herd incidence by DVO (Southern Region)

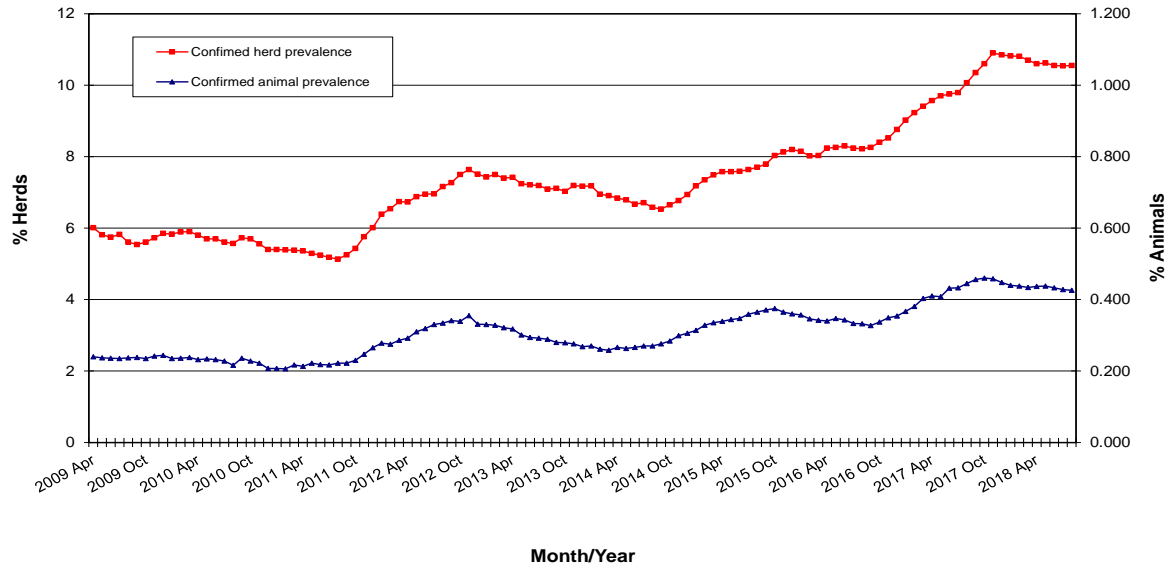


Annual TB herd incidence by DVO (Northern Region)

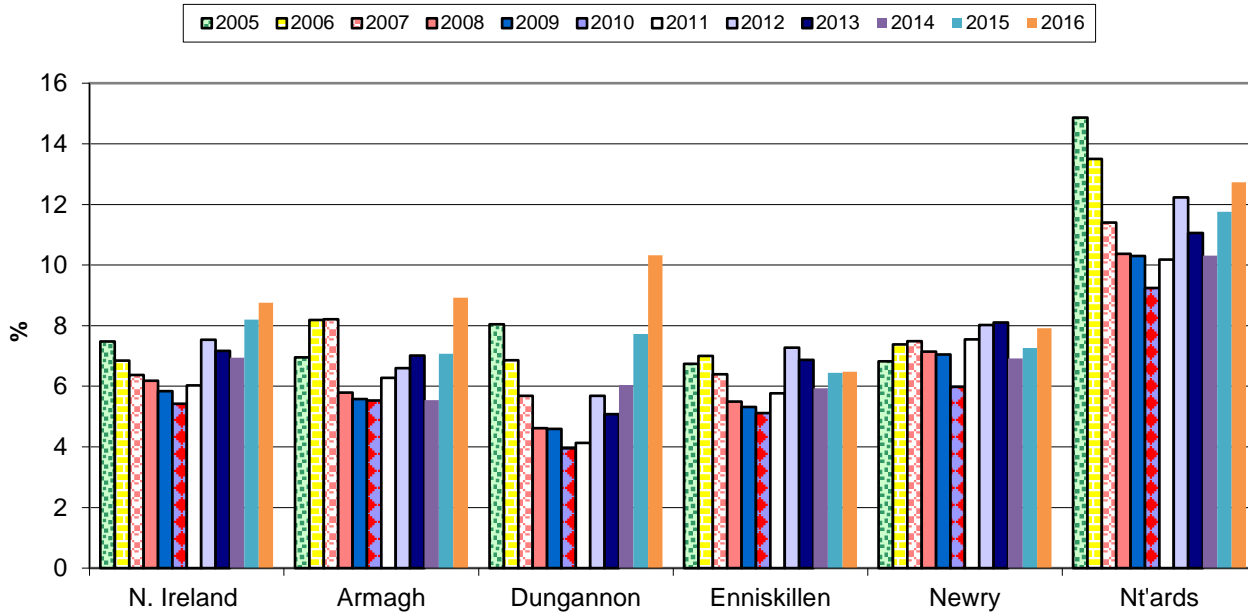




**TB Confirmed Herd^ and Animal Prevalence:
(12 month moving average: April 2009 to August 2018)**

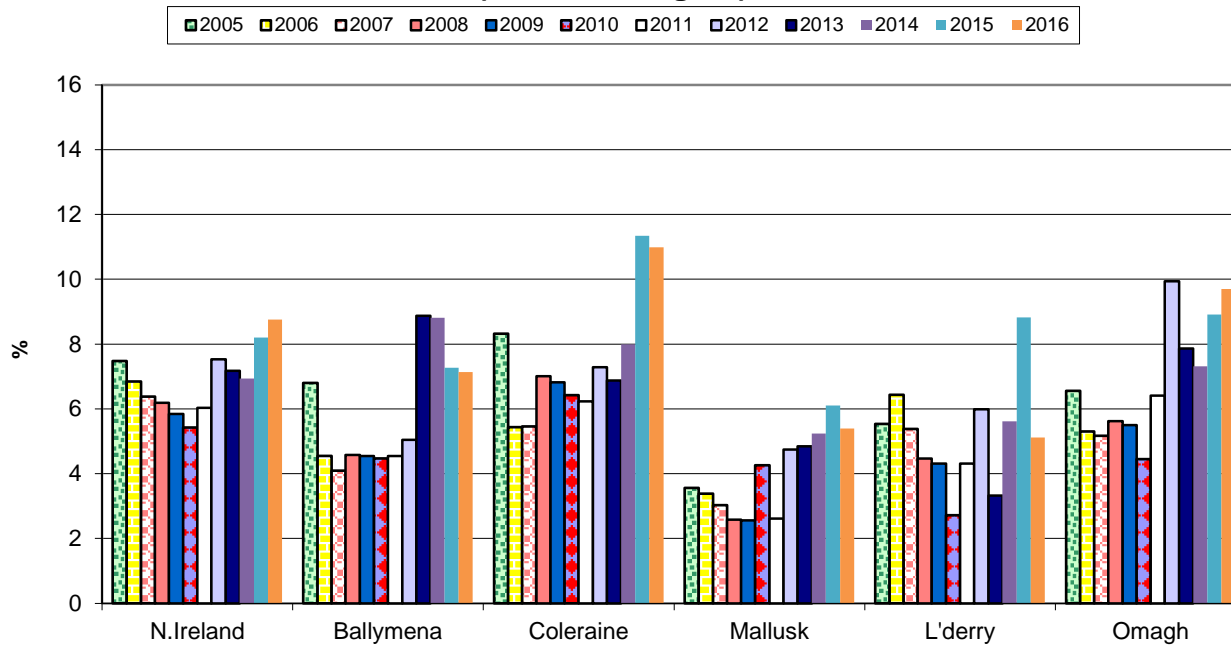


Annual confirmed TB herd prevalence by DVO (Southern Region)



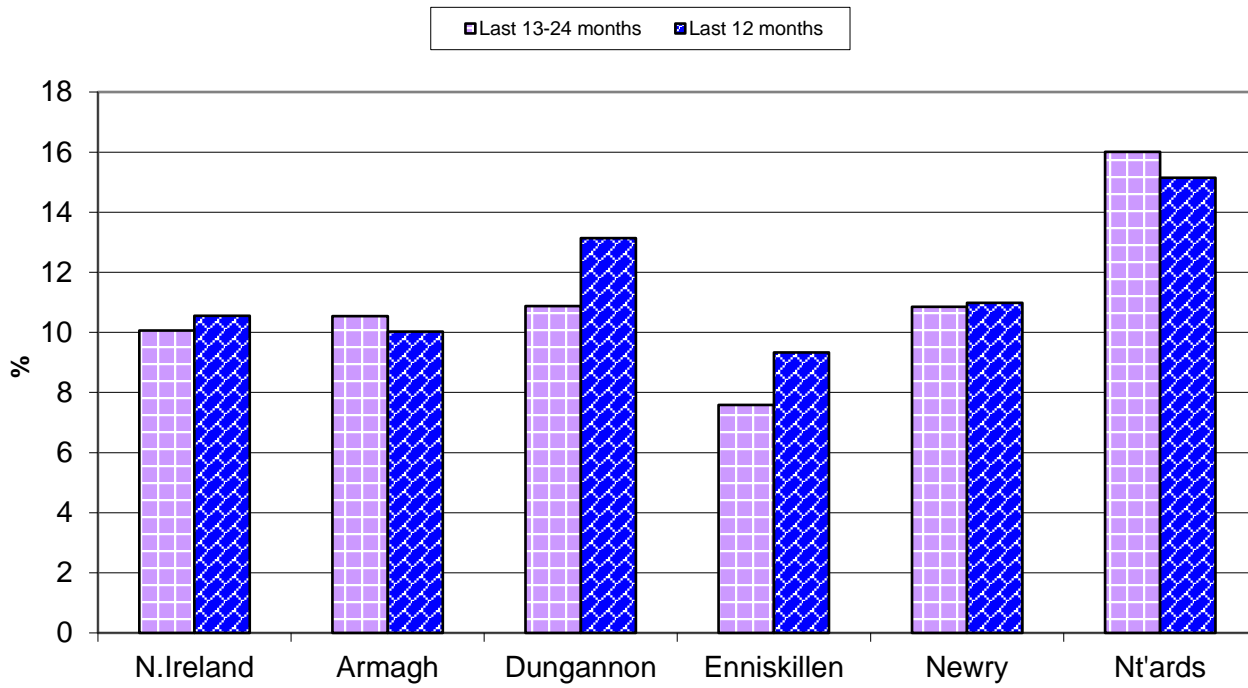
^ numerator includes all herds that had confirmed TB within the 12 month period

Annual confirmed TB herd prevalence by DVO (Northern Region)



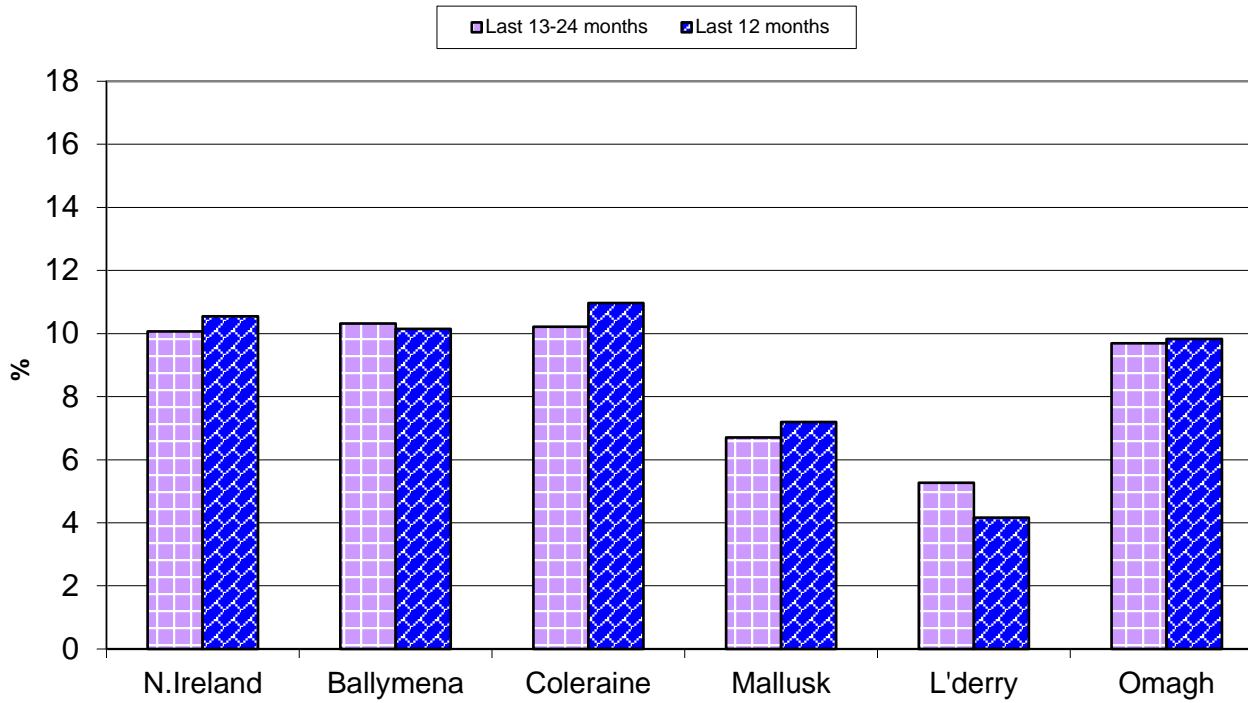
^ numerator includes all herds that had confirmed TB within the 12 month period

Annual confirmed TB herd prevalence[^] by DVO (Southern Region)



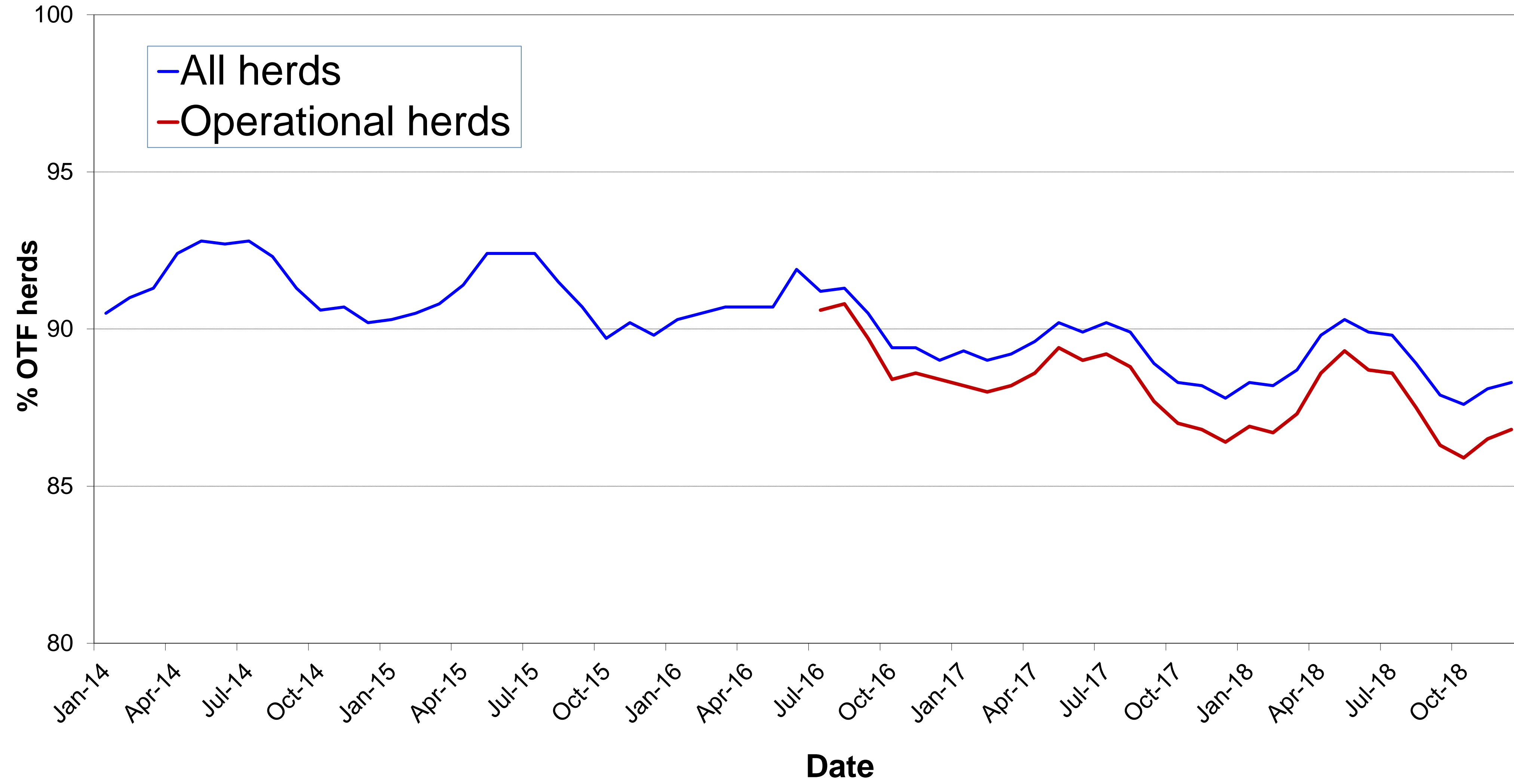
[^] numerator includes all herds that had confirmed TB within the 12 month period

Annual confirmed TB herd prevalence[^] by DVO (Northern Region)



[^] numerator includes all herds that had confirmed TB within the 12 month period

% herds that are officially tuberculosis free (OTF herds)



Month = December 2018

Ref.	Total	Armagh	Ballymena	Coleraine	Dungannon	Enniskillen	Mallusk	L'derry	Newry	Nt'ards	Omagh	
d1	No. of herds with TB reactors during month	315	34	24	39	45	30	17	14	52	29	31
d2	No. of new reactor herds during month	158	19	12	18	17	12	12	9	25	17	17
d3	No. of new reactor herds since start of year	2088	191	147	286	264	262	96	53	302	246	241
d4	No. of new reactor herds in the previous 12 months	2088	191	147	286	264	262	96	53	302	246	241
d26	No. of new reactor herds in the previous 13-24 months	2208	214	158	239	292	246	120	39	365	245	290
d5	No. of TB reactor animals during month	1075	131	60	96	193	114	41	26	191	100	123
d6	No. of TB reactor animals since start of year	15329	1125	736	1531	2045	2147	612	248	2791	1838	2256
d7	No. of reactor animals in the previous 12 months	15329	1125	736	1531	2045	2147	612	248	2791	1838	2256
d27	No. of reactor animals in the previous 13-24 months	15949	1499	739	1439	2162	2530	627	159	3353	1852	1589
d20	Cumulative herd incidence in year (%)	9.22	8.60	10.79	11.51	9.66	8.86	6.13	6.08	8.16	13.13	8.35
d9	Annual herd incidence over the last 12 months (%)	9.22	8.60	10.79	11.51	9.66	8.86	6.13	6.08	8.16	13.13	8.35
d28	Annual herd incidence over the last 13-24 months (%)	9.61	9.33	11.55	9.53	10.45	8.24	7.59	4.41	9.80	12.96	9.83
d10	2017 Herd Incidence (%)	9.61	9.33	11.55	9.53	10.45	8.24	7.59	4.41	9.80	12.96	9.83
d11	2016 Herd Incidence (%)	7.45	8.23	6.34	8.72	8.77	6.58	4.52	3.41	6.35	10.62	8.01
d38	2015 Herd Incidence (%)	7.15	6.29	6.21	9.31	6.75	6.41	5.26	8.59	6.54	8.92	7.77
d30	2014 Herd Incidence (%)	6.03	4.84	7.24	7.71	5.02	5.48	5.24	4.83	5.55	8.03	6.62
d16	2013 Herd Incidence (%)	6.44	6.66	8.94	6.72	4.41	6.06	5.85	3.55	6.72	8.86	6.51
d21	Cumulative animal incidence in year (%)	0.879	0.598	0.579	0.646	0.952	1.239	0.406	0.371	1.090	0.934	1.040
d12	Annual animal incidence over the last 12 months (%)	0.879	0.598	0.579	0.646	0.952	1.239	0.406	0.371	1.090	0.934	1.040
d29	Annual animal incidence over the last 13-24 months (%)	0.911	0.785	0.587	0.610	1.002	1.453	0.411	0.238	1.325	0.956	0.717
d13	2017 Animal Incidence (%)	0.911	0.785	0.587	0.610	1.002	1.453	0.411	0.238	1.325	0.956	0.717
d14	2016 Animal Incidence (%)	0.697	0.539	0.237	0.567	0.765	1.092	0.269	0.238	0.731	0.885	0.857
d39	2015 Animal Incidence (%)	0.661	0.504	0.310	0.486	0.612	0.707	0.256	0.661	0.848	0.889	0.855
d31	2014 Animal Incidence (%)	0.550	0.350	0.349	0.476	0.364	0.786	0.244	0.199	0.815	0.781	0.551

d15	2013 Animal Incidence (%)	0.510	0.476	0.652	0.324	0.323	0.742	0.214	0.112	0.634	0.741	0.474
d34	APT during current month	3.75	4.84	2.88	2.56	5.48	3.99	1.51	2.30	5.01	3.60	3.71
d22	APT since start of year	4.67	3.57	3.02	3.27	5.29	6.95	2.55	2.50	5.88	4.84	6.12
d17	Current 12 month moving average APT	4.67	3.57	3.02	3.27	5.29	6.95	2.55	2.50	5.88	4.84	6.12
d19	2017 APT	5.07	4.57	3.40	3.31	5.89	8.74	2.78	1.73	7.57	5.00	4.24
d42	2016 APT	4.23	3.45	1.63	3.14	4.99	7.28	1.98	1.72	4.62	5.20	5.20
d40	2015 APT	4.06	3.37	2.08	2.80	4.31	4.46	1.88	4.51	5.33	5.06	5.38
d32	2014 APT	3.55	2.39	2.18	3.24	2.78	5.24	1.79	1.58	5.08	4.64	3.65
d18	2013 APT	3.27	3.14	4.53	2.20	2.42	4.90	1.64	0.86	3.87	4.33	3.05
d23	No. negative in contacts since start of year	999	57	103	109	151	62	40	10	165	155	147
d46	No. negative in contacts over last 12 months	999	57	103	109	151	62	40	10	165	155	147
d25	No. negative in contacts during 2017	891	92	14	189	43	83	50	1	242	74	103
d43	No. negative in contacts during 2016	579	37	11	78	24	105	8	57	17	63	179
d41	No. negative in contacts during 2015	755	59	10	23	62	37	45	9	73	95	342
d33	No. negative in contacts during 2014	1060	40	10	100	227	93	29	9	201	35	316
d24	No. negative in contacts during 2013	565	44	74	3	18	83	22	0	49	35	237
d37	Reactor removal time 2018	9.6	13.0	8.2	8.9	9.6	9.6	11.6	8.2	10.3	9.6	8.9
d47	Reactor removal time 2017	9.6	11.6	8.2	8.9	12.3	9.6	9.6	8.2	12.3	11.6	8.2
D44	Reactor removal time 2016	8.9	11.0	8.9	8.2	8.2	8.9	8.9	8.2	8.9	8.2	8.2
d36	Reactor removal time 2015	8.9	9.6	9.6	8.9	8.9	8.2	8.9	8.2	9.6	9.6	8.2
d45	Reactor removal time 2014	8.9	9.6	8.9	8.9	8.9	8.9	8.9	8.2	10.3	8.9	8.2
d35	Reactor removal time 2013	8.9	9.6	8.9	8.2	9.6	8.9	9.6	8.9	9.6	9.6	8.2

Tuberculosis: number of reactor herds by month and by DVO in 2018 and unique herd breakdowns during the year

2018		DVO_CODE										
Year	Month	Armagh	Ballymena	Coleraine	Dungannon	Enniskillen	L'Derry	Mallusk	Newry	Nt'Ards	Omagh	Total
2018	1	18	12	22	26	22	4	15	25	20	16	180
2018	2	15	7	35	27	28	9	9	31	22	18	201
2018	3	14	20	32	31	23	1	18	32	23	29	223
2018	4	18	12	24	22	22	3	1	29	13	19	163
2018	5	15	6	18	29	21	3	4	26	13	20	155
2018	6	8	9	21	12	13	4	5	17	19	15	123
2018	7	8	4	17	19	21	4	2	21	16	16	128
2018	8	22	15	23	25	19	0	5	17	20	16	162
2018	9	19	11	25	17	20	4	1	20	34	18	169
2018	10	16	17	20	21	35	4	12	27	22	25	199
2018	11	19	22	31	18	26	8	12	32	27	32	227
2018	12	19	12	18	17	12	9	12	25	17	17	158
Total		191	147	286	264	262	53	96	302	246	241	2088

Unique Herd Breakdowns		DVO_CODE										
Year	Armagh	Ballymena	Coleraine	Dungannon	Enniskillen	L'Derry	Mallusk	Newry	Nt'Ards	Omagh	Total Herds	
2018	248	194	376	381	335	61	125	440	320	326	2806	

Tuberculosis: number of reactor herds by month and by DVO in 2017 and unique herd breakdowns during the year

2017		DVO_CODE										
Year	Month	Armagh	Ballymena	Coleraine	Dungannon	Enniskillen	L'Derry	Mallusk	Newry	Nt'Ards	Omagh	Total
2017	1	31	22	24	32	20	7	9	38	22	29	234
2017	2	15	16	19	19	22	2	11	33	20	16	173
2017	3	19	15	27	30	21	1	17	38	28	29	225
2017	4	19	13	27	23	24	2	9	27	26	28	198
2017	5	11	8	24	15	17	2	7	34	16	20	154
2017	6	9	8	18	25	16	1	4	20	24	16	141
2017	7	11	7	9	9	8	3	4	29	15	18	113
2017	8	21	16	5	23	20	1	5	24	20	8	143
2017	9	22	12	20	18	30	3	6	24	15	21	171
2017	10	16	18	17	20	26	4	15	27	26	32	201
2017	11	21	9	31	42	22	9	16	47	17	42	256
2017	12	19	14	18	36	20	4	17	24	16	31	199
Total		214	158	239	292	246	39	120	365	245	290	2208

Unique Herd Breakdowns		DVO_CODE										
Year	Armagh	Ballymena	Coleraine	Dungannon	Enniskillen	L'Derry	Mallusk	Newry	Nt'Ards	Omagh	Total Herds	
2017	286	179	317	391	302	46	136	487	336	369	2849	

Tuberculosis: number of reactor herds by month and by DVO in 2016 and unique herd breakdowns during the year

2016		DVO_CODE										
Year	Month	Armagh	Ballymena	Coleraine	Dungannon	Enniskillen	L'Derry	Mallusk	Newry	Nt'Ards	Omagh	Total
2016	1	17	14	26	24	17	3	16	19	15	35	186
2016	2	15	8	16	24	14	1	8	9	11	16	122
2016	3	18	9	25	28	15	1	1	19	16	18	150
2016	4	25	12	29	17	24	2	8	26	10	35	188
2016	5	8	3	14	22	16	2	0	13	12	12	102
2016	6	8	5	14	15	11	2	2	9	17	9	92
2016	7	6	3	9	11	16	1	0	19	16	8	89
2016	8	10	1	14	12	11	0	1	13	19	13	94
2016	9	17	6	14	18	15	1	0	23	15	14	123
2016	10	20	7	19	26	17	3	5	21	20	28	166
2016	11	19	13	16	31	16	8	15	28	25	25	196
2016	12	26	7	27	21	29	6	17	39	30	29	231
Total		189	88	223	249	201	30	73	238	206	242	1739

Unique Herd Breakdowns		DVO_CODE										
Year	Armagh	Ballymena	Coleraine	Dungannon	Enniskillen	L'Derry	Mallusk	Newry	Nt'Ards	Omagh	Total Herds	
2016	231	111	319	322	236	49	93	311	249	325	2246	

A herd is defined as being a TB reactor herd if it had at least one TB reactor animal in that month and no TB reactor animals during the previous 12 months.

A TB unique herd breakdown is defined as a herd which has had at least one TB reactor during the specified calendar year irrespective of any TB reactors during the previous calendar year.

Tuberculosis: number of reactor animals by month and by DVO 2018

2018		DVO_CODE										
Year	Month	Armagh	Ballymena	Coleraine	Dungannon	Enniskillen	L'Derry	Mallusk	Newry	Nt'Ards	Omagh	Total
2018	1	71	37	96	199	178	20	88	233	180	206	1308
2018	2	40	69	121	186	262	24	71	159	123	149	1204
2018	3	81	69	122	308	199	15	90	307	116	327	1634
2018	4	117	22	166	165	186	12	48	305	101	186	1308
2018	5	64	34	99	175	159	14	17	258	81	222	1123
2018	6	54	150	101	142	117	12	24	186	146	116	1048
2018	7	95	20	120	140	141	29	2	207	189	128	1071
2018	8	121	41	136	164	157	25	19	228	213	223	1327
2018	9	113	45	101	110	229	10	41	242	179	156	1226
2018	10	144	59	173	153	256	22	91	204	138	195	1435
2018	11	94	130	200	110	149	39	80	271	272	225	1570
2018	12	131	60	96	193	114	26	41	191	100	123	1075
Total		1125	736	1531	2045	2147	248	612	2791	1838	2256	15329

Tuberculosis: number of reactor animals by month and by DVO 2017

2017		DVO_CODE										
Year	Month	Armagh	Ballymena	Coleraine	Dungannon	Enniskillen	L'Derry	Mallusk	Newry	Nt'Ards	Omagh	Total
2017	1	266	73	113	145	219	34	23	323	241	135	1572
2017	2	82	59	129	109	200	3	47	298	180	122	1229
2017	3	238	52	150	154	193	30	156	285	179	146	1583
2017	4	193	33	102	154	191	6	42	203	169	132	1225
2017	5	54	81	133	100	121	2	28	254	92	89	954
2017	6	34	26	211	146	184	4	15	272	167	93	1152
2017	7	111	34	91	88	232	12	54	233	169	108	1132
2017	8	45	145	67	220	279	2	42	236	187	84	1307
2017	9	152	55	144	161	219	14	37	306	125	168	1381
2017	10	122	52	99	200	304	8	36	346	123	133	1423
2017	11	94	65	102	449	216	30	73	322	158	227	1736
2017	12	108	64	98	236	172	14	74	275	62	152	1255
Total		1499	739	1439	2162	2530	159	627	3353	1852	1589	15949

Tuberculosis: number of reactor animals by month and by DVO 2016

2016		DVO_CODE										
Year	Month	Armagh	Ballymena	Coleraine	Dungannon	Enniskillen	L'Derry	Mallusk	Newry	Nt'Ards	Omagh	Total
2016	1	106	41	171	169	100	27	42	140	175	246	1217
2016	2	65	20	77	156	106	17	50	129	72	166	858
2016	3	73	39	75	107	109	11	14	151	74	148	801
2016	4	94	39	191	130	158	19	50	159	106	272	1218
2016	5	76	11	95	90	180	2	29	66	178	133	860
2016	6	23	15	46	62	90	10	16	61	78	57	458
2016	7	72	21	54	70	134	8	35	145	180	67	786
2016	8	98	10	88	99	143	0	17	128	115	129	827
2016	9	64	21	88	94	89	11	14	143	133	218	875
2016	10	129	24	118	185	234	19	15	217	120	192	1253
2016	11	92	23	160	332	189	17	60	186	213	117	1389
2016	12	102	21	157	108	331	20	61	254	188	140	1382
Total		994	285	1320	1602	1863	161	403	1779	1632	1885	11924

A TB reactor animal is defined as an animal where the manual interpretation field for a skin test is positive ('P') with the first test date being taken as the time at which the animal became a reactor. Animals with lesions at routine slaughter ('LRS') are not taken into account.

Month = December 2018

Ref.		Total	Armagh	Ballymena	Coleraine	Dungannon	Enniskillen	Mallusk	L'derry	Newry	Nt'ards	Omagh
b16	No. herds with any test completed in month	3588	362	248	367	460	474	336	148	484	293	416
b17	No. herds with any test, from start of year	22733	2236	1366	2493	2746	2962	1570	874	3709	1881	2896
b29	All herds with any test, from start of year	23490	2277	1413	2623	2872	3027	1624	916	3778	1943	3017
b18	No. herds with any test, from start of year (no cattle)	757	41	47	130	126	65	54	42	69	62	121
b19	No. herds with herd test completed in month	3283	323	227	343	414	439	289	139	458	269	382
b20	No. herds with herd test, from start of year	22656	2220	1362	2484	2733	2957	1566	871	3703	1874	2886
b30	All herds with herd test, from start of year	23434	2265	1411	2617	2866	3023	1620	914	3772	1937	3009
b21	No. herds with herd test, from start of year (no cattle)	778	45	49	133	133	66	54	43	69	63	123
b22	No. herds with herd test during last 12 months	22656	2220	1362	2484	2733	2957	1566	871	3703	1874	2886
b31	No. herds with herd test during last 13-24 months	22978	2293	1368	2507	2794	2986	1581	884	3725	1891	2949
b23	No. herds with herd test during 2017	22978	2293	1368	2507	2794	2986	1581	884	3725	1891	2949
b24	No. herds with herd test during 2016	23345	2297	1387	2557	2840	3057	1615	881	3750	1940	3021
b39	No. herds with herd test during 2015	23604	2304	1417	2610	2875	3121	1654	873	3748	1939	3063
b32	No. herds with herd test during 2014	23149	2274	1395	2490	2829	3049	1621	890	3658	1892	3051
b28	No. herds with herd test during 2013	22979	2237	1353	2530	2833	3054	1590	873	3618	1863	3028
b25	No. herds with any risk test completed	13701	1278	933	1665	1797	1864	865	340	2198	1209	1552
b26	No. herds with herd risk test completed	11367	900	833	1441	1477	1692	683	256	1799	1013	1273
b27	No. herds with restricted herd test completed	4294	434	257	513	600	459	231	98	721	512	469

Month = December 2018

Ref	Total	Armagh	Ballymena	Coleraine	Dungannon	Enniskillen	Mallusk	L'derry	Newry	Nt'ards	Omagh	
c1	Total number of tests in current month	4327	449	285	429	623	526	406	165	582	357	505
c2	Total number of tests from start of year	50265	5279	3229	5731	6629	5872	3388	1538	8214	4505	5880
c3	No. tests during the same time period in the previous year	49070	5576	2992	5450	6462	5570	3277	1495	7832	4473	5943
c4	% change between years	2.4	-5.6	7.3	4.9	2.5	5.1	3.3	2.8	4.7	0.7	-1.1
c5	No. tests in the previous 12 months	50265	5279	3229	5731	6629	5872	3388	1538	8214	4505	5880
c6	No. animal tests in current month	286721	27057	20868	37508	35238	28570	27072	11307	38140	27789	33172
c7	No. animal tests from start of year	3284171	315413	243350	468008	386592	308932	239977	99137	474286	379987	368489
c8	No. animal tests during the same time period in the previous year	3143044	327912	217401	435354	366791	289327	225791	92058	443184	370772	374454
c9	% change between years	4.3	-4.0	10.7	7.0	5.1	6.3	5.9	7.1	6.6	2.4	-1.6
c10	No. animal tests in previous 12 months	3284171	315413	243350	468008	386592	308932	239977	99137	474286	379987	368489
c11	No. cattle herds eligible for TB testing	25416	2536	1518	2786	3053	3247	1795	996	4096	2128	3261
c12	No. cattle eligible for TB testing	1599059	161756	110559	208186	180053	156232	136883	62044	216397	169508	197441
c13	No. restricted herd tests during month	720	88	44	83	104	82	35	21	111	84	68
c14	No. animals tested	109523	10836	6362	15224	15136	10227	7950	2059	16728	13332	11669
c15	No. herd tests during month	3283	323	227	343	414	439	289	139	458	269	382
c16	No. animals tested	284158	26788	20684	37307	34704	28348	26630	11261	37875	27615	32946
c17	No. individual tests during month	1044	126	58	86	209	87	117	26	124	88	123
c18	No. animals tested	2563	269	184	201	534	222	442	46	265	174	226
c23	No. animals TB tested since start of year	1744432	188181	127178	237125	214744	173248	150915	66810	256145	196845	216977
c19	No. animals TB tested in previous 12 months	1744432	188181	127178	237125	214744	173248	150915	66810	256145	196845	216977
c24	No. animals TB tested in previous 13-24 months	1750189	190843	125844	235772	215868	174064	152687	66667	253113	193797	221579
c20	No. animals TB tested in 2017	1750170	190842	125843	235774	215867	174063	152684	66667	253109	193787	221579
c21	No. animals TB tested in 2016	1709508	184410	120059	232831	209246	170575	148773	67744	243436	184600	219947
c26	No. animals TB tested in 2015	1662355	173129	118652	230608	200883	169615	144926	67583	230622	180647	213478
c25	No. animals TB tested in 2014	1607660	166774	117083	214490	191534	163019	143992	61765	225643	177960	207187
c22	No. animals TB tested in 2013	1620055	172322	114133	214509	197072	166287	140842	62228	224389	180893	210490

Month = December 2018

Ref		Total	Armagh	Ballymena	Coleraine	Dungannon	Enniskillen	Mallusk	L'derry	Newry	Nt'ards	Omagh
	<i>All Herds</i>											
f1	No. of Officially Tuberculosis Free Herds (OTF)	26437	2628	1572	2989	3208	3263	2001	1148	4201	1939	3488
f2	No. of Officially Tuberculosis Suspended Herds (OTS)	1356	168	64	132	119	123	135	45	262	164	144
f3	No. of Officially Tuberculosis Withdrawn Herds (OTW)	2134	237	128	222	261	227	122	53	381	290	213
f4	% herds that are OTF	88.3	86.6	89.1	89.4	89.4	90.3	88.6	92.1	86.7	81.0	90.7
f5	% herds that are OTS	4.5	5.5	3.6	3.9	3.3	3.4	6.0	3.6	5.4	6.9	3.7
f6	% herds that are OTW	7.1	7.8	7.3	6.6	7.3	6.3	5.4	4.3	7.9	12.1	5.5
	<i>Operational Herds</i>											
	No. of Officially Tuberculosis Free Herds (OTF)	21081	2073	1254	2336	2562	2748	1502	860	3376	1604	2766
	No. of Officially Tuberculosis Suspended Herds (OTS)	1169	133	63	122	98	109	100	44	232	145	123
	No. of Officially Tuberculosis Withdrawn Herds (OTW)	2036	222	128	218	251	220	104	51	366	279	197
	% herds that are OTF	86.8	85.4	86.8	87.3	88.0	89.3	88.0	90.1	85.0	79.1	89.6
	% herds that are OTS	4.8	5.5	4.4	4.6	3.4	3.5	5.9	4.6	5.8	7.1	4.0
	% herds that are OTW	8.4	9.1	8.9	8.1	8.6	7.1	6.1	5.3	9.2	13.8	6.4

		Month = August 2018										
		(Data lagged by 4 months)										
Ref		Total	Armagh	Ballymena	Coleraine	Dungannon	Enniskillen	Mallusk	L'derry	Newry	Nt'ards	Omagh
e19	Num. TB culture positive animals that were not TB reactors in last 12 months	795	89	25	74	109	38	39	4	214	125	78
e20	Num. TB culture positive animals that were not TB reactors in last 13-24 months	790	88	41	79	105	36	47	16	193	122	63
e3	Num. TB culture positive animals that were not TB reactors in 2017	782	91	41	83	113	40	51	8	168	128	59
e4	Num. TB culture positive animals that were not TB reactors in 2016	714	64	35	89	101	36	34	13	173	104	65
e5	Num. TB culture positive animals that were not TB reactors in 2015	676	71	41	95	84	27	38	18	120	112	70
e6	Num. TB culture positive animals that were not TB reactors in 2014	575	68	37	54	66	38	53	12	100	80	67
e2	Num. TB culture positive animals that were not TB reactors in 2013	583	63	33	32	98	28	30	7	131	92	69
e21	No. herds with TB culture positive animals that were not TB reactors in last 12 months	483	65	17	44	58	25	27	4	109	79	55
e22	No. herds with TB culture positive animals that were not TB reactors in last 13-24 months	474	51	30	46	67	26	34	14	102	69	35
e9	No. herds with TB culture positive animals that were not TB reactors in 2017	466	56	28	43	62	26	31	8	93	77	42
e10	No. herds with TB culture positive animals that were not TB reactors in 2016	469	45	21	57	63	26	31	11	100	68	47
e11	No. herds with TB culture positive animals that were not TB reactors in 2015	449	50	25	70	55	20	27	12	67	78	45
e12	No. herds with TB culture positive animals that were not TB reactors in 2014	372	47	25	37	48	27	27	10	66	51	34
e8	No. herds with TB culture positive animals that were not TB reactors in 2013	381	50	14	30	46	20	20	5	83	60	53
e23	% of TB animals that were TB culture positive that were not TB reactors in last 12 months	4.8	7.4	3.6	5.0	4.1	1.6	6.3	1.8	6.4	7.2	3.4
e24	% of TB animals that were TB culture positive that were not TB reactors in last 13-24 months	5.0	5.9	6.5	4.9	5.4	1.4	7.8	9.1	6.2	5.6	3.8
e15	% of TB animals that were TB culture positive that were not TB reactors in 2017	4.7	5.7	5.3	5.5	5.0	1.6	7.5	4.8	4.8	6.5	3.6
e16	% of TB animals that were TB culture positive that were not TB reactors in 2016	5.6	6.0	10.9	6.3	5.9	1.9	7.8	7.5	8.9	6.0	3.3
e17	% of TB animals that were TB culture positive that were not TB reactors in 2015	5.8	7.5	10.0	7.8	6.4	2.2	9.3	3.9	5.8	6.5	3.7
e18	% of TB animals that were TB culture positive that were not TB reactors in 2014	6.1	10.4	8.3	5.0	8.7	2.9	13.1	8.9	5.2	5.4	5.5
e14	% of TB animals that were TB culture positive that were not TB reactors in 2013	6.6	7.1	4.2	4.4	13.4	2.2	9.0	9.1	8.4	6.4	6.5

		Month = August 2018										
Ref	(Data lagged by 4 months)	Total	Armagh	Ballymena	Coleraine	Dungannon	Enniskillen	Mallusk	L'derry	Newry	Nt'ards	Omagh
g31	No. of confirmed TB reactors during last 12 months	6671	480	287	605	1070	995	216	92	1191	826	909
g32	No. of confirmed TB reactors during last 13-24 months	6906	642	317	835	839	1017	296	85	1126	973	776
g3	No. of confirmed TB reactors 2017	7058	692	392	735	884	976	334	72	1323	925	725
g4	No. of confirmed TB reactors 2016	5339	429	145	714	807	759	174	98	622	801	790
g5	No. of confirmed TB reactors 2015	5306	428	228	658	591	561	194	284	784	718	860
g6	No. of confirmed TB reactors 2014	4346	294	229	591	392	561	156	84	725	722	592
g2	No. of confirmed TB reactors 2013	3765	377	422	373	255	520	116	40	541	636	485
g33	Total animals with confirmed TB during last 12 months	7466	569	312	679	1179	1033	255	96	1405	951	987
g34	Total animals with confirmed TB in last 13-24 months	7696	730	358	914	944	1053	343	101	1319	1095	839
g9	Total animals with confirmed TB in 2017	7840	783	433	818	997	1016	385	80	1491	1053	784
g10	Total animals with confirmed TB in 2016	6053	493	180	803	908	795	208	111	795	905	855
g11	Total animals with confirmed TB in 2015	5982	499	269	753	675	588	232	302	904	830	930
g12	Total animals with confirmed TB in 2014	4921	362	266	645	458	599	209	96	825	802	659
g8	Total animals with confirmed TB in 2013	4348	440	455	405	353	548	146	47	672	728	554
g35	Confirmed TB animal prevalence in last 12 months (%)	0.426	0.301	0.247	0.287	0.539	0.600	0.169	0.146	0.549	0.483	0.452
g36	Confirmed TB animal prevalence in last 13-24 months (%)	0.445	0.392	0.292	0.391	0.449	0.615	0.230	0.153	0.528	0.574	0.380
g15	Confirmed TB animal prevalence in 2017 (%)	0.448	0.410	0.344	0.347	0.462	0.584	0.252	0.120	0.589	0.543	0.354
g16	Confirmed TB animal prevalence in 2016 (%)	0.354	0.267	0.150	0.345	0.434	0.466	0.140	0.164	0.327	0.489	0.389
g17	Confirmed TB animal prevalence in 2015 (%)	0.360	0.288	0.226	0.326	0.336	0.347	0.160	0.447	0.392	0.459	0.436
g18	Confirmed TB animal prevalence in 2014 (%)	0.306	0.217	0.227	0.301	0.239	0.367	0.145	0.155	0.366	0.451	0.318
g14	Confirmed TB animal prevalence in 2013 (%)	0.268	0.255	0.399	0.189	0.179	0.330	0.104	0.076	0.299	0.402	0.263
g37	No. herds with confirmed TB in last 12 months	2413	228	139	275	363	278	114	37	406	285	288
g38	No. herds with confirmed TB in last 13-24 months	2338	243	143	261	306	229	109	47	405	306	289
g21	No. herds with confirmed TB in 2017	2493	254	158	260	339	253	126	42	429	315	317
g22	No. herds with confirmed TB in 2016	2045	205	99	281	293	198	87	45	297	247	293
g23	No. herds with confirmed TB in 2015	1936	163	103	296	222	201	101	77	272	228	273
g24	No. herds with confirmed TB in 2014	1606	126	123	199	171	181	85	50	253	195	223
g20	No. herds with confirmed TB in 2013	1648	157	120	174	144	210	77	29	293	206	238
g39	Confirmed TB herd prevalence in last 12 months (%)	10.55	10.03	10.15	10.97	13.13	9.34	7.20	4.17	10.98	15.14	9.83
g40	Confirmed TB herd prevalence in last 13-24 months (%)	10.07	10.54	10.32	10.22	10.88	7.59	6.71	5.27	10.85	16.00	9.69

g27	Confirmed TB herd prevalence in 2017 (%)	10.85	11.08	11.55	10.37	12.13	8.47	7.97	4.75	11.52	16.66	10.75
g28	Confirmed TB herd prevalence in 2016 (%)	8.76	8.92	7.14	10.99	10.32	6.48	5.39	5.11	7.92	12.73	9.70
g29	Confirmed TB herd prevalence in 2015 (%)	8.20	7.07	7.27	11.34	7.72	6.44	6.11	8.82	7.26	11.76	8.91
g30	Confirmed TB herd prevalence in 2014 (%)	6.94	5.54	8.82	7.99	6.04	5.94	5.24	5.62	6.92	10.31	7.31
g26	Confirmed TB herd prevalence in 2013 (%)	7.17	7.02	8.87	6.88	5.08	6.88	4.84	3.32	8.10	11.06	7.86

Explanatory Comments for Tuberculosis Statistics - B. Testing Herds

Ref	Data Title	Explanation
B16	No. herds with any test completed in month	Test of any disease status and size (herd or animal-level). Tests with no animals are excluded.
B17	No. herds with any test, from start of year	Test of any disease status and size (herd or animal-level) carried out on a herd since 1st January. Tests with no animals are excluded.
B29	All herds with any test, from start of year	Skin test of any disease status and size (herd or animal-level) carried out on a herd since 1st January. Tests with no animals are included.
B18	No. herds with any test, from start of year (no cattle)	Herd or individual test of any disease status (routine, risk or restricted) where no cattle were recorded at all such tests since 1st January.
B19	No. herds with herd test completed in month	Herd level test of any disease status (routine, risk or restricted) completed during the above month. Tests with no animals are excluded.
B20	No. herds with herd test, from start of year	Herd level test of any disease status (routine, risk or restricted) completed since 1st January. Tests with no animals are excluded.
B30	All herds with herd test, from start of year	Herd level test of any disease status (routine, risk or restricted) completed since 1st January. Tests with no animals are included.
B21	No. herds with herd test, from start of year (no cattle)	Herd level test of any disease status (routine, risk or restricted) where no cattle were recorded at all such herd tests since 1st January.
B22	No. herds with herd test during last 12 months	Herd level test of any disease status (routine, risk or restricted) completed in the 12 month period from the above month. Tests with no animals are excluded.
B31	No. herds with herd test during last 13-24 months	Herd level test of any disease status (routine, risk or restricted) completed in the 13-24 months from the above month. Tests with no animals are excluded.
B39	No. herds with herd test during the year	Herd level test of any disease status (routine, risk or restricted) completed in the calendar year. Tests with no animals are excluded.
B32	No. herds with herd test during the year	Herd level test of any disease status (routine, risk or restricted) completed in the calendar year. Tests with no animals are excluded.
B28	No. herds with herd test during the year	Herd level test of any disease status (routine, risk or restricted) completed in the calendar year. Tests with no animals are excluded.
B23	No. herds with herd test during the year	Herd level test of any disease status (routine, risk or restricted) completed in the calendar year. Tests with no animals are excluded.
B24	No. herds with herd test during the year	Herd level test of any disease status (routine, risk or restricted) completed in the calendar year. Tests with no animals are excluded.
B25	No. herds with any risk test completed	Herd has had a herd or individual level risk test since start of calendar year and number tested > 0.
B26	No. herds with herd risk test completed	Herd has had a herd level risk test since start of calendar year and number tested > 0.
B27	No. herds with restricted herd test completed	Herd has had a restricted herd test (RHT, RH1, RH2) since start of calendar year and number tested > 0.

Explanatory Comments for Tuberculosis Statistics - C. Testing Animals

Ref	Data Title	Explanation
C1	Total number of tests in current month	Number of herds and individual tests performed in the month stated above. Tests with no animals are excluded.
C2	Total number of tests from start of year	From 1st January. Tests with no animals are excluded.
C3	No. tests during the same time period in the previous year	From 1st January of previous year. Tests with no animals are excluded.
C4	% change between years	Difference between the number of tests carried out during the current year and the number carried out in the previous expressed as a percentage.
C5	No. tests in the previous 12 months	Last 12 month period from the above month. Tests with no animals are excluded.
C6	No. animal tests in current month	Animal test = a count of the number of animals tested within each herd or individual test. Some animals may have been tested multiple times during the year.
C7	No. animal tests from start of year	Number of animal tests carried out since 1st January.
C8	No. animal tests during the same time period in the previous year	Number of animal tests carried out from 1st January in the previous year over the same time interval as recorded for the current year.
C9	% change between years	Difference between the number of animal tests during the current year and the number carried out in the previous expressed as a percentage.
C10	No. animal tests in previous 12 months	Last 12 month period from the above month.
C11	No. cattle eligible for TB testing	Based on the average number of animals presented at TB herd tests over last 4 years.
C12	No. cattle herds eligible for TB testing	Based on cattle being presented for a TB herd tests over last 4 years. Herds with '0' cattle are excluded.

C13	No. restricted herd tests during month	All restricted herd tests (RHT, RH1 and RH2) carried out during the above month.
C14	No. animals tested	Total of the animals reported as being tested within restricted herd tests (RHT, RH1, RH2) during the above month.
C15	No. herd tests during month	Total of the animals reported as being tested within all herd tests during the above month.
C16	No. animals tested	Total of the animals reported as being tested within all herd tests during the above month.
C17	No. individual tests during month	Total of the animals reported as being tested within all individual tests during the above month.
C18	No. animals tested	Total of the animals reported as being tested within all individual tests during the above month.
C23	No. animals TB tested since start of year	Animals identified as having had at least one TB skin test since the start of the calendar year. Due to the same animals being sampled in different DVO areas, the 'Total' is not the sum of the DVO figures.
C19	No. animals TB tested in previous 12 months	Animals identified as having had at least one TB skin test during the last 12 month period from the above month. Due to the same animals being sampled in different DVO areas, the 'Total' is not the sum of the DVO figures.
C24	No. animals TB tested in previous 13-24 months	Animals identified as having had at least one TB skin test during the last 13-24 months from the above month. Due to the same animals being sampled in different DVO areas, the 'Total' is not the sum of the DVO figures.
C26	No. animals TB tested in the year	Animals identified as having had at least one TB skin test during the calendar year. Due to the same animals being sampled in different DVO areas, the 'Total' is not the sum of the DVO figures.
C25	No. animals TB tested in the year	Animals identified as having had at least one TB skin test during the calendar year. Due to the same animals being sampled in different DVO areas, the 'Total' is not the sum of the DVO figures.
C22	No. animals TB tested in the year	Animals identified as having had at least one TB skin test during the calendar year. Due to the same animals being sampled in different DVO areas, the 'Total' is not the sum of the DVO figures.
C20	No. animals TB tested in the year	Animals identified as having had at least one TB skin test during the calendar year. Due to the same animals being sampled in different DVO areas, the 'Total' is not the sum of the DVO figures.
C21	No. animals TB tested in the year	Animals identified as having had at least one TB skin test during the calendar year. Due to the same animals being sampled in different DVO areas, the 'Total' is not the sum of the DVO figures.
Explanatory Comments for Tuberculosis Statistics - D. Results		
Ref	Data Title	Explanation
D1	No. of herds with TB reactors during month	A herd is included in this figure if the herd number had a TB skin test reactor during the above month.
D2	No. of new reactor herds during month	A herd is defined as being a TB reactor herd if it had at least one TB reactor animal in that month and no TB reactor animals during the previous 12 months.
D3	No. of new reactor herds since start of year	= Since 1st January
D4	No. of new reactor herds in the previous 12 months	Last 12 month period from the above month.
D26	No. of new reactor herds in previous 13-24 months	Last 13-24 month period from the above month.
D5	No. of TB reactor animals during month	A TB reactor animal is defined as an animal where the manual interpretation field for a skin test is positive ('P') with the first test date being taken as the time at which the animal became a reactor. Currently animals with lesions at routine slaughter (*LRS*) are not taken into account.
D6	No. of TB reactor animals since start of year	= Since 1st January
D7	No. of reactor animals in the previous 12 months	Last 12 month period from the above month.
D27	No. of reactor animals in previous 13-24 months	Last 13-24 month period from the above month.
D20	Cumulative herd incidence in year (%)	Number of NEW reactor herds since the start of the calendar year as a proportion of cattle herds which have presented cattle for a TB herd test during the same time period.
D9	Annual herd incidence over the last 12 months (%)	Number of NEW reactor herds during the last 12 months as a proportion of cattle herds which have presented cattle for a TB herd test during the same time period.
D28	Annual herd incidence over the last 13-24 months (%)	Number of NEW reactor herds during the last 13-24 months as a proportion of cattle herds which have presented cattle for a TB herd test during the same time period.
D38	In-year Herd Incidence (%)	Number of NEW reactor herds during the year as a proportion of cattle herds which have presented cattle for a TB herd test during the same time period.
D30	In-year Herd Incidence (%)	Number of NEW reactor herds during the year as a proportion of cattle herds which have presented cattle for a TB herd test during the same time period.
D16	In-year Herd Incidence (%)	Number of NEW reactor herds during the year as a proportion of cattle herds which have presented cattle for a TB herd test during the same time period.
D10	In-year Herd Incidence (%)	Number of NEW reactor herds during the year as a proportion of cattle herds which have presented cattle for a TB herd test during the same time period.
D11	In-year Herd Incidence (%)	Number of NEW reactor herds during the year as a proportion of cattle herds which have presented cattle for a TB herd test during the same time period.
D21	Cumulative animal incidence in year (%)	Number of reactor animals during the above month as a proportion of cattle which have been presented for a TB test during the same time period.
D12	Annual animal incidence over the last 12 months (%)	Number of reactor animals during the last 12 months as a proportion of cattle which have been presented for a TB test during the same time period.
D29	Annual animal incidence over the last 13-24 months (%)	Number of reactor animals during the last 13-24 months as a proportion of cattle which have been presented for a TB test during the same time period.
D39	In year Animal Incidence (%)	Number of reactor animals during the year as a proportion of cattle which have been presented for a TB herd test during the same time period.

D31	In year Animal Incidence (%)	Number of reactor animals during the year as a proportion of cattle which have been presented for a TB herd test during the same time period.
D15	In year Animal Incidence (%)	Number of reactor animals during the year as a proportion of cattle which have been presented for a TB herd test during the same time period.
D13	In year Animal Incidence (%)	Number of reactor animals during the year as a proportion of cattle which have been presented for a TB herd test during the same time period.
D14	In year Animal Incidence (%)	Number of reactor animals during the year as a proportion of cattle which have been presented for a TB herd test during the same time period.
D34	APT during current month	= The reactor disclosure rate per 1,000 animal tests current calendar month.
D22	APT since start of year	The reactor disclosure rate per 1,000 animal tests since the start of the calendar year.
D17	Current 12 month moving average APT	The reactor disclosure rate per 1,000 animal tests. Current refers to the rate over the last 12 months.
D42	In year APT	The reactor disclosure rate per 1,000 animal tests during the calendar year.
D40	In year APT	The reactor disclosure rate per 1,000 animal tests during the calendar year.
D32	In year APT	The reactor disclosure rate per 1,000 animal tests during the calendar year.
D18	In year APT	The reactor disclosure rate per 1,000 animal tests during the calendar year.
D19	In year APT	The reactor disclosure rate per 1,000 animal tests during the calendar year.
D23	No. negative in contacts since start of year	Number of animals taken as negative in contacts since the start of the year.
d46	No. Negative in contacts over last 12 months (%)	= Number of negative in contacts during the last 12 months
D43	No. negative in contacts during the year	Number of animals taken as negative in contacts during the year.
D41	No. negative in contacts during the year	Number of animals taken as negative in contacts during the year.
D33	No. negative in contacts during the year	Number of animals taken as negative in contacts during the year.
D24	No. negative in contacts during the year	Number of animals taken as negative in contacts during the year.
D25	No. negative in contacts during the year	Number of animals taken as negative in contacts during the year.
D37	Reactor removal time during the year	Figures given are median values for working days estimated from calendar days (calendar days multiplied by 0.685). Reactors which are not yet slaughtered or where they they were first declared as reactors at slaughter are excluded.
D45	Reactor removal time during the year	Figures given are median values for working days estimated from calendar days (calendar days multiplied by 0.685). Reactors which are not yet slaughtered or where they they were first declared as reactors at slaughter are excluded.
D35	Reactor removal time during the year	Figures given are median values for working days estimated from calendar days (calendar days multiplied by 0.685). Reactors which are not yet slaughtered or where they they were first declared as reactors at slaughter are excluded.
D44	Reactor removal time during the year	Figures given are median values for working days estimated from calendar days (calendar days multiplied by 0.685). Reactors which are not yet slaughtered or where they they were first declared as reactors at slaughter are excluded.
D36	Reactor removal time during the year	Figures given are median values for working days estimated from calendar days (calendar days multiplied by 0.685). Reactors which are not yet slaughtered or where they they were first declared as reactors at slaughter are excluded.

g35	Confirmed TB animal prevalence in last 12 months (%)	Number of TB reactors that were confirmed during the last 12 months by the presence of visible lesions at slaughter and/or by laboratory confirmation (histopathology and/or culture) plus the number of other animals where M. bovis was cultured from TB-like lesions found at slaughter during the last 12 months that were not identified as TB reactor animals divided by the number of animals tuberculin tested during the last 12 months expressed as a %
g36	Confirmed TB animal prevalence in last 13-24 months (%)	Number of TB reactors that were confirmed during the last 13-24 months by the presence of visible lesions at slaughter and/or by laboratory confirmation (histopathology and/or culture) plus the number of other animals where M. bovis was cultured from TB-like lesions found at slaughter during the last 13-24 months that were not identified as TB reactor animals divided by the number of animals tuberculin tested during the last 13-24 months expressed as a %
g18	Confirmed TB animal prevalence in year (%)	Number of TB reactors that were confirmed during the year by the presence of visible lesions at slaughter and/or by laboratory confirmation (histopathology and/or culture) plus the number of other animals where M. bovis was cultured from TB-like lesions found at slaughter during the year that were not identified as TB reactor animals divided by the number of animals tuberculin tested during the year expressed as a %
g14	Confirmed TB animal prevalence in year (%)	Number of TB reactors that were confirmed during the year by the presence of visible lesions at slaughter and/or by laboratory confirmation (histopathology and/or culture) plus the number of other animals where M. bovis was cultured from TB-like lesions found at slaughter during the year that were not identified as TB reactor animals divided by the number of animals tuberculin tested during the year expressed as a %
g15	Confirmed TB animal prevalence in year (%)	Number of TB reactors that were confirmed during the year by the presence of visible lesions at slaughter and/or by laboratory confirmation (histopathology and/or culture) plus the number of other animals where M. bovis was cultured from TB-like lesions found at slaughter during the year that were not identified as TB reactor animals divided by the number of animals tuberculin tested during the year expressed as a %
g16	Confirmed TB animal prevalence in year (%)	Number of TB reactors that were confirmed during the year by the presence of visible lesions at slaughter and/or by laboratory confirmation (histopathology and/or culture) plus the number of other animals where M. bovis was cultured from TB-like lesions found at slaughter during the year that were not identified as TB reactor animals divided by the number of animals tuberculin tested during the year expressed as a %
g17	Confirmed TB animal prevalence in year (%)	Number of TB reactors that were confirmed during the year by the presence of visible lesions at slaughter and/or by laboratory confirmation (histopathology and/or culture) plus the number of other animals where M. bovis was cultured from TB-like lesions found at slaughter during the year that were not identified as TB reactor animals divided by the number of animals tuberculin tested during the year expressed as a %
g37	No. herds with confirmed TB in last 12 months	Herds that had at least one confirmed TB animal during the last 12 months.
g38	No. herds with confirmed TB in last 13-24 months	Herds that had at least one confirmed TB animal during the last 13-24 months.
g24	No. herds with confirmed TB in year	Herds that had at least one confirmed TB animal during the year.
g20	No. herds with confirmed TB in year	Herds that had at least one confirmed TB animal during the year.
g21	No. herds with confirmed TB in year	Herds that had at least one confirmed TB animal during the year.
g22	No. herds with confirmed TB in year	Herds that had at least one confirmed TB animal during the year.
g23	No. herds with confirmed TB in year	Herds that had at least one confirmed TB animal during the year.
g39	Confirmed TB herd prevalence in last 12 months (%)	Number of herds that had at least one confirmed TB animal during the last 12 months divided the number of herds that presented cattle at a TB herd test expressed as a %.
g40	Confirmed TB herd prevalence in last 13-24 months (%)	Number of herds that had at least one confirmed TB animal during the last 13-24 months divided the number of herds that presented cattle at a TB herd test expressed as a %.
g30	Confirmed TB herd prevalence in year (%)	Number of herds that had at least one confirmed TB animal during the year divided the number of herds that presented cattle at a TB herd test expressed as a %.
g26	Confirmed TB herd prevalence in year (%)	Number of herds that had at least one confirmed TB animal during the year divided the number of herds that presented cattle at a TB herd test expressed as a %.
g27	Confirmed TB herd prevalence in year (%)	Number of herds that had at least one confirmed TB animal during the year divided the number of herds that presented cattle at a TB herd test expressed as a %.
g28	Confirmed TB herd prevalence in year (%)	Number of herds that had at least one confirmed TB animal during the year divided the number of herds that presented cattle at a TB herd test expressed as a %.
g29	Confirmed TB herd prevalence in year (%)	Number of herds that had at least one confirmed TB animal during the year divided the number of herds that presented cattle at a TB herd test expressed as a %.