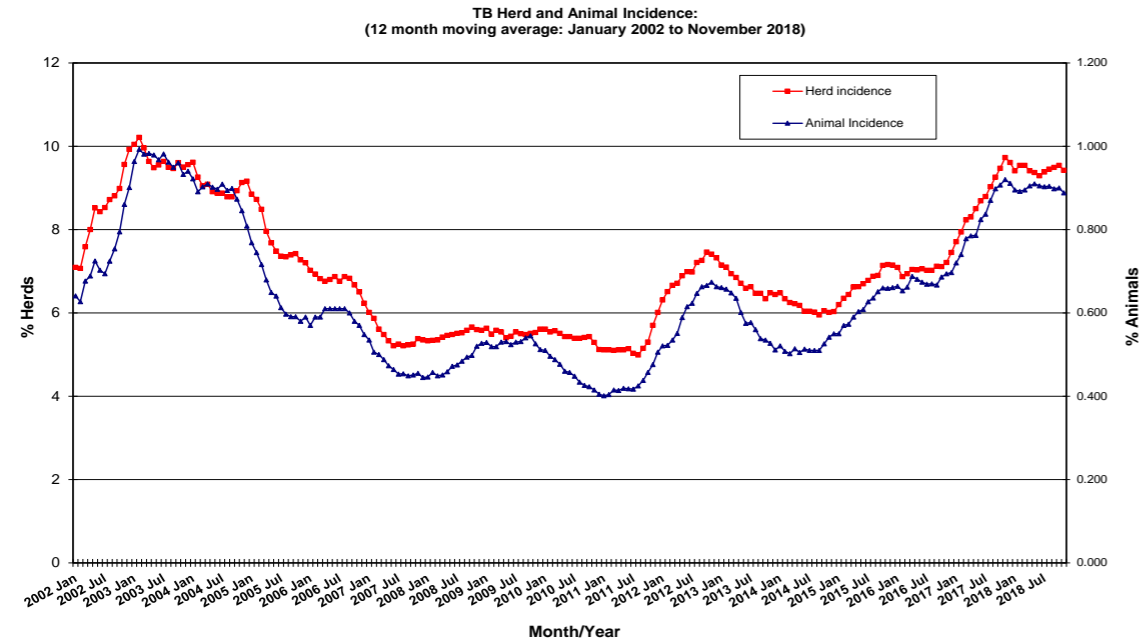
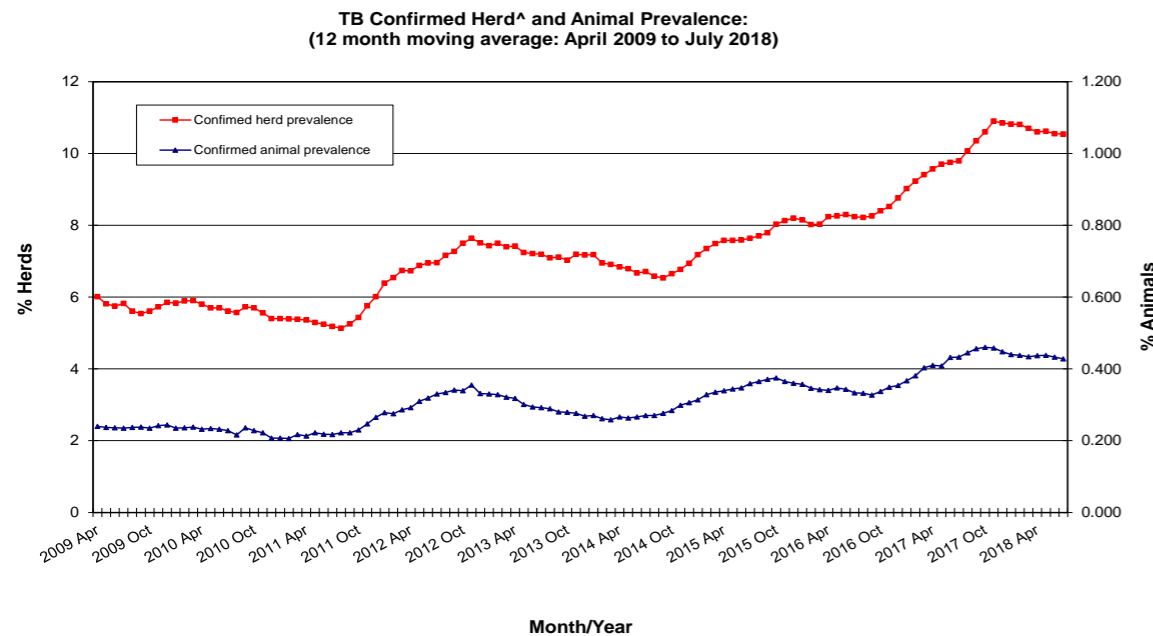


Tuberculosis: Statistics for November 2018



Disease statistics

Annual herd incidence over the last 12 months (%)	9.42	
Annual herd incidence over the last 13-24 months (%)	9.73	
2017 Herd Incidence (%)	9.61	
Annual animal incidence over the last 12 months (%)	0.888	
Annual animal incidence over the last 13-24 months (%)	0.920	
2017 Animal Incidence (%)	0.911	
Confirmed TB herd prevalence in last 12 months (%)	10.54	for Month = July 2018
Confirmed TB herd prevalence in last 13-24 months (%)	9.79	for Month = July 2018
Confirmed TB herd prevalence in 2017 (%)	10.85	for Month = July 2018
Confirmed TB animal prevalence in last 12 months (%)	0.428	for Month = July 2018
Confirmed TB animal prevalence in last 13-24 months (%)	0.433	for Month = July 2018
Confirmed TB animal prevalence in 2017 (%)	0.448	for Month = July 2018



TB skin test reactors

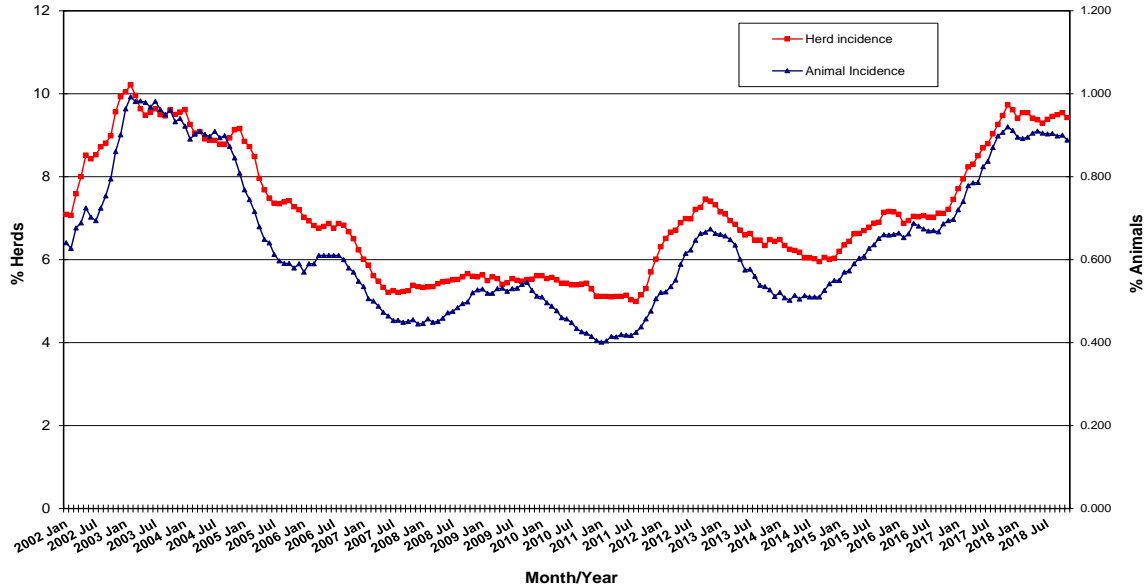
No. of TB reactor animals during month	1,570
No. of TB reactor animals since start of year	14,254
No. of reactor animals in the previous 12 months	15,509
No. of reactor animals in the previous 13-24 months	16,076

Herds & animals tested

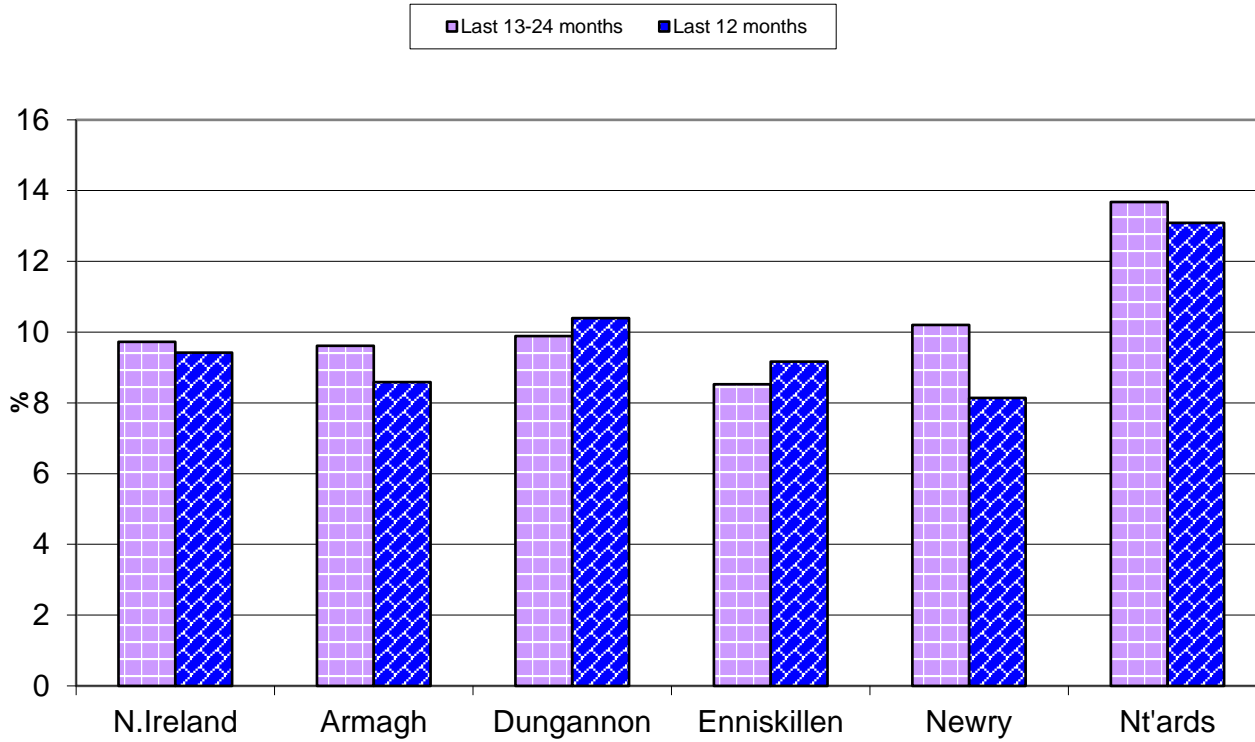
No. herds with herd test during last 12 months	22,597
No. herds with herd test during last 13-24 months	23,026
No. herds with herd test during 2017	22,978
No. animals TB tested since start of year	1,659,736
No. animals TB tested in previous 12 months	1,747,257
No. animals TB tested in previous 13-24 months	1,746,599
No. animals TB tested in 2017	1,750,170

For definitions of these parameters, refer to the 'Explanatory Comments' worksheet: [Click here](#)

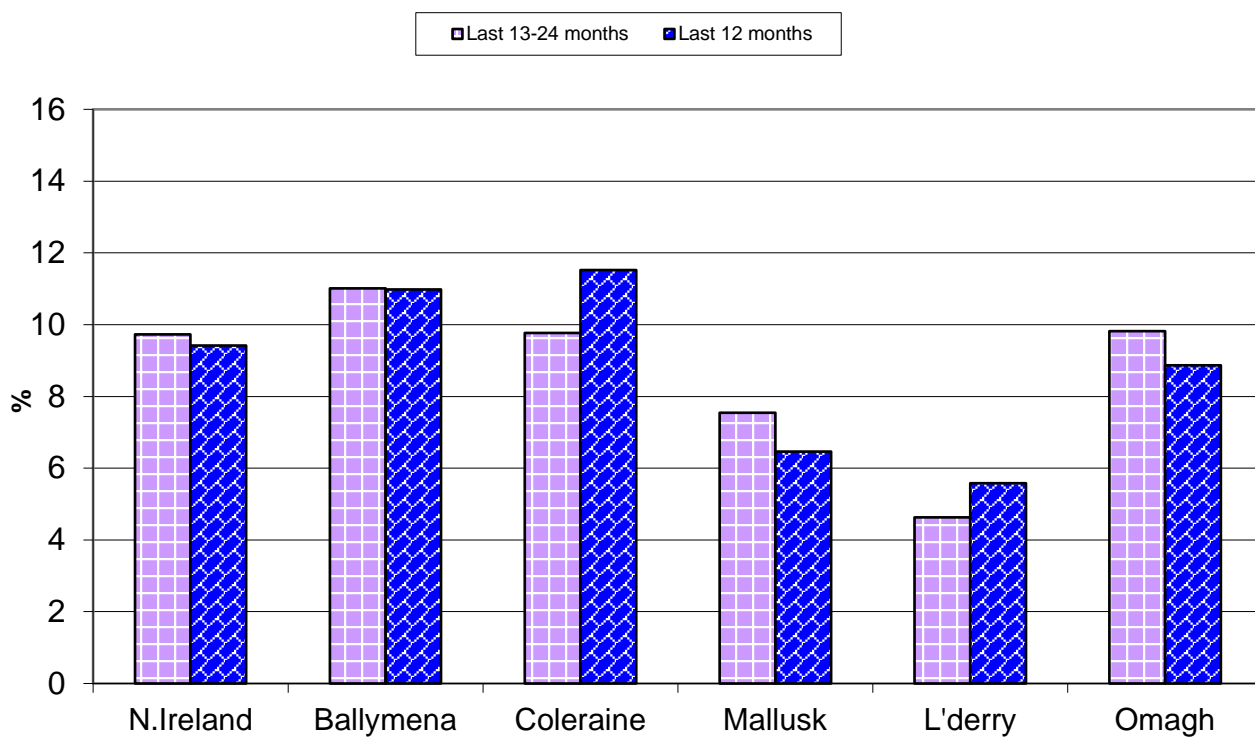
TB Herd and Animal Incidence:
 (12 month moving average: January 2002 to November 2018)

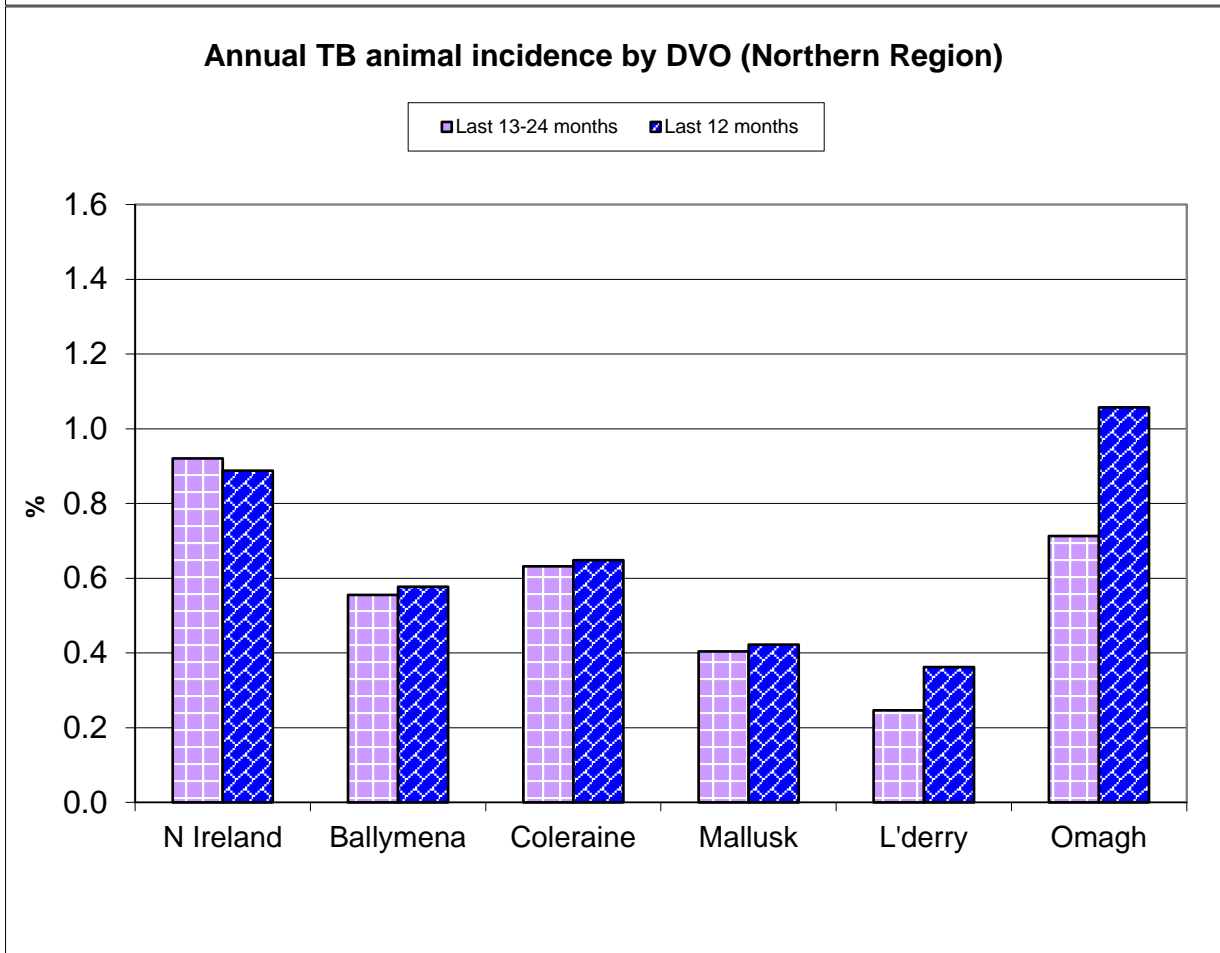
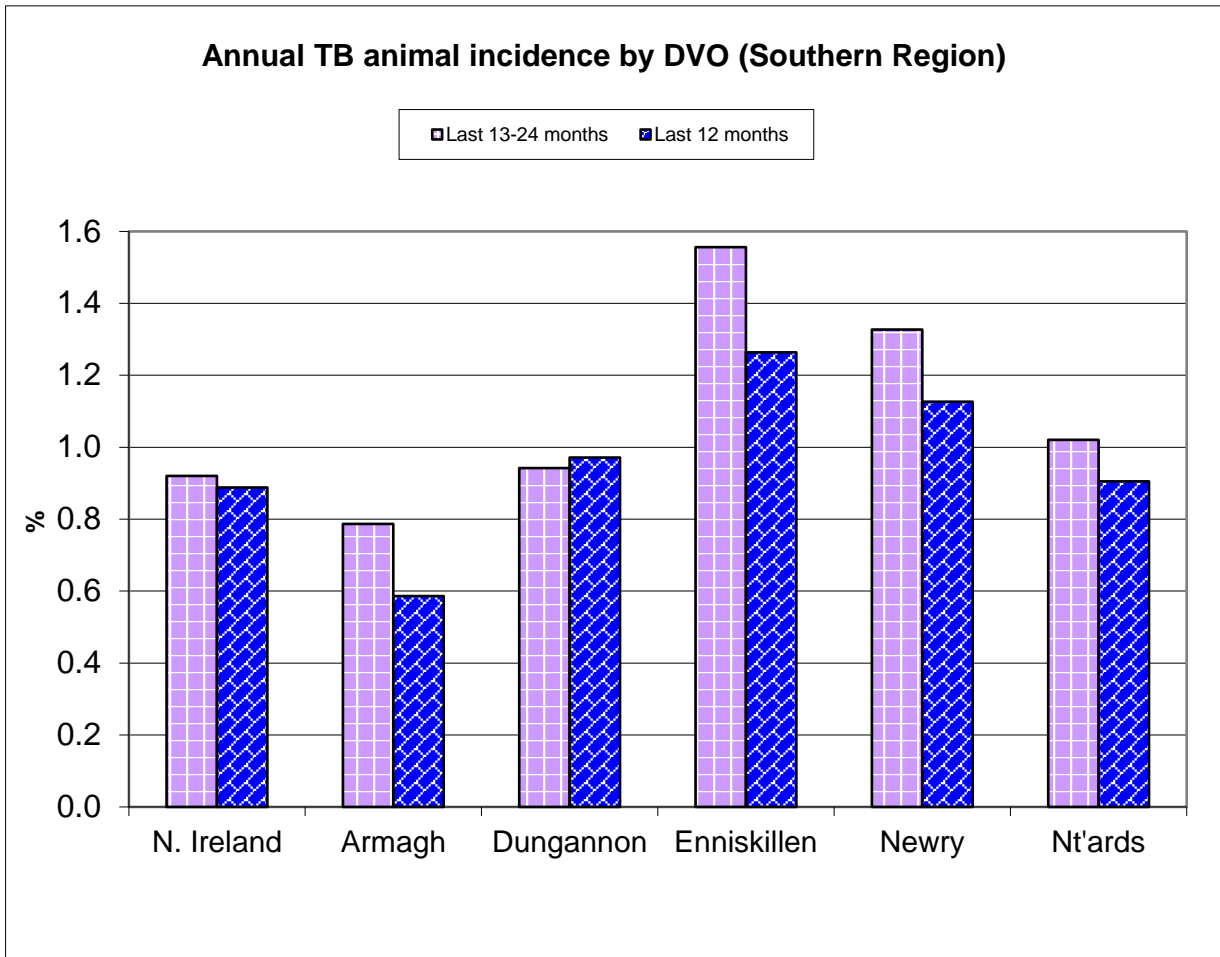


Annual TB herd incidence by DVO (Southern Region)

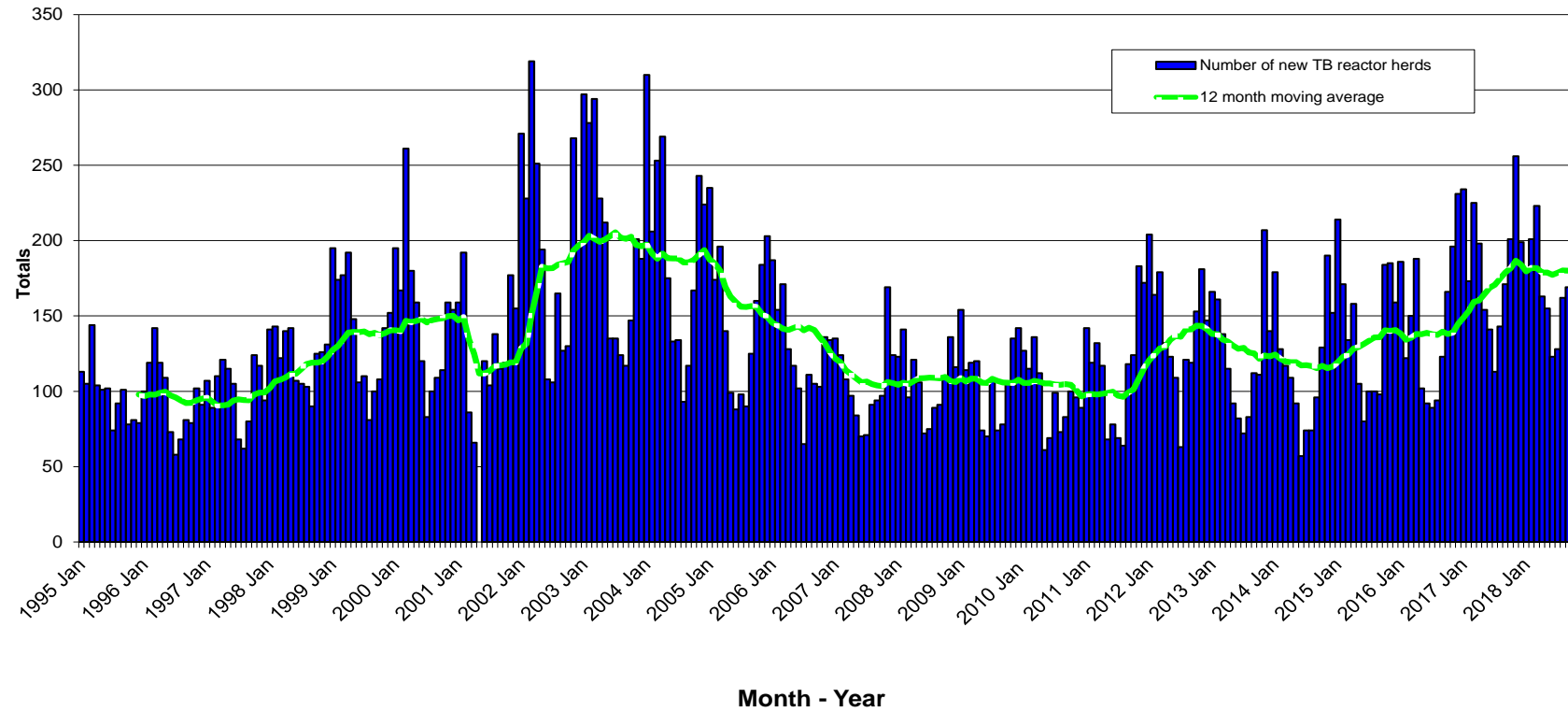


Annual TB herd incidence by DVO (Northern Region)

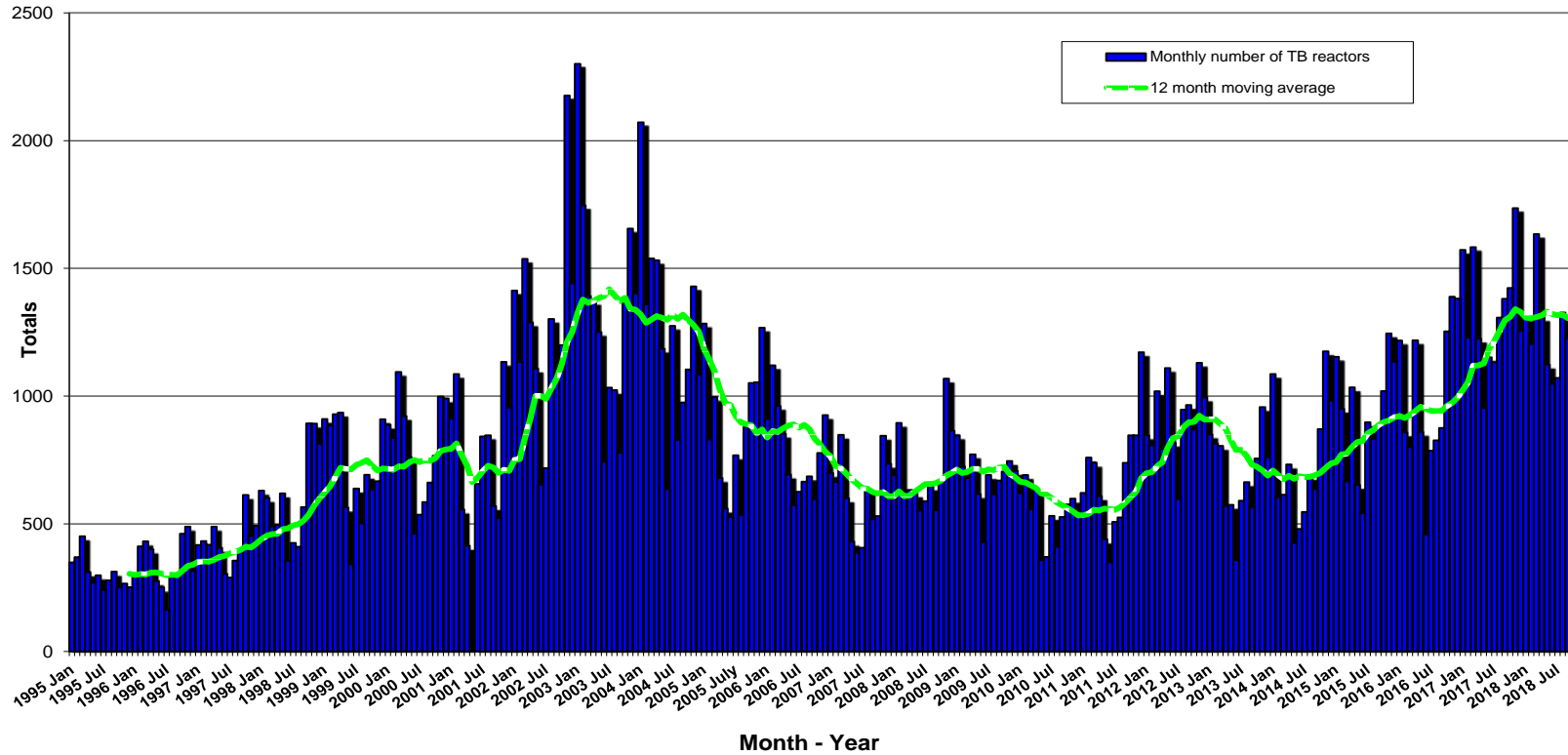




New TB Reactor Herds: January 1995 to November 2018

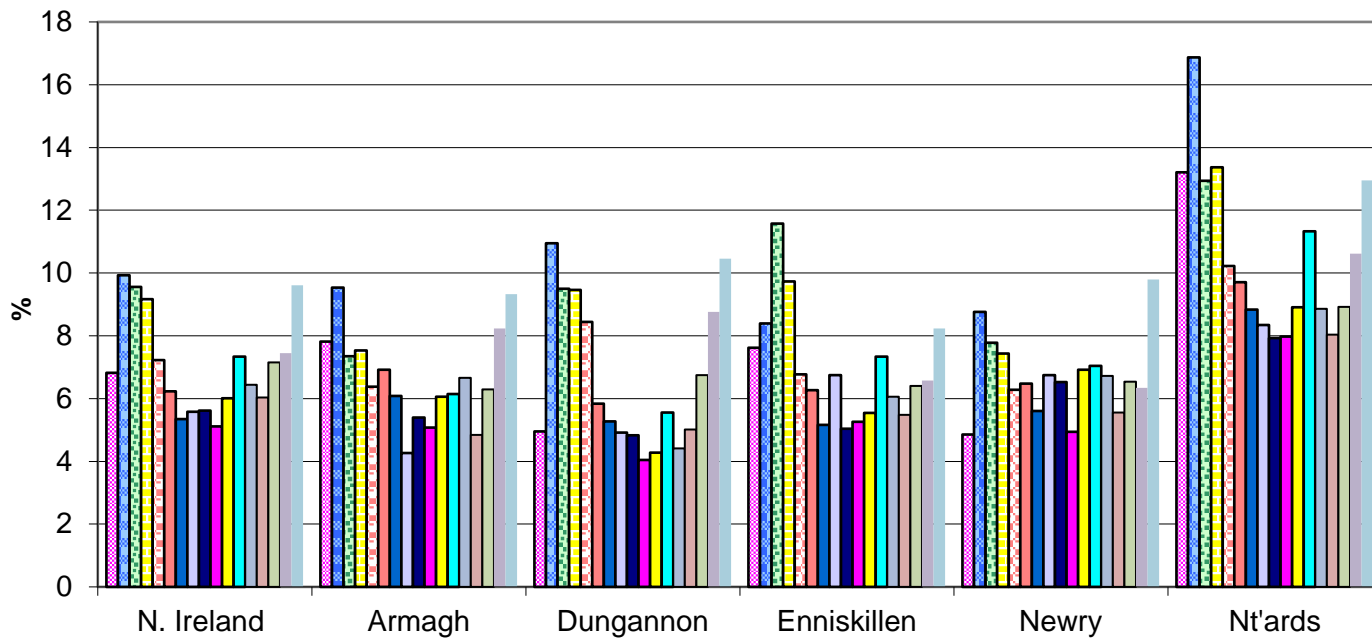


TB Reactors: January 1995 to November 2018



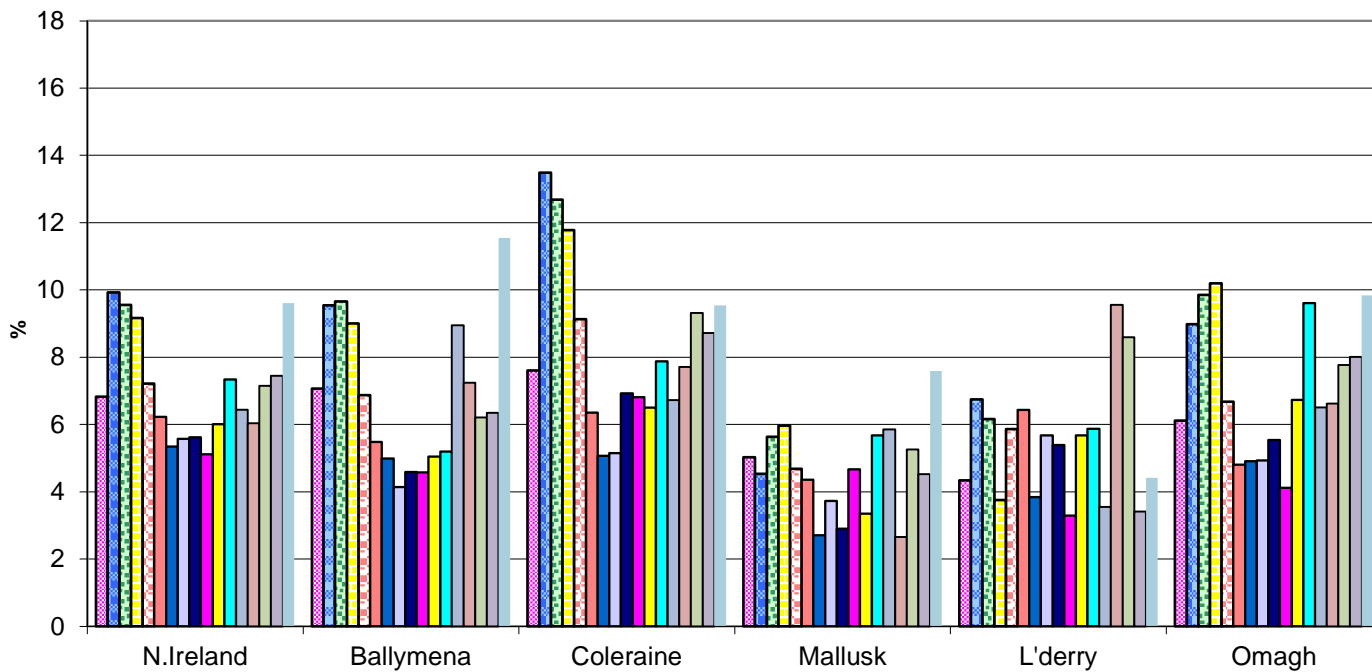
Annual TB herd incidence by DVO (Southern Region)

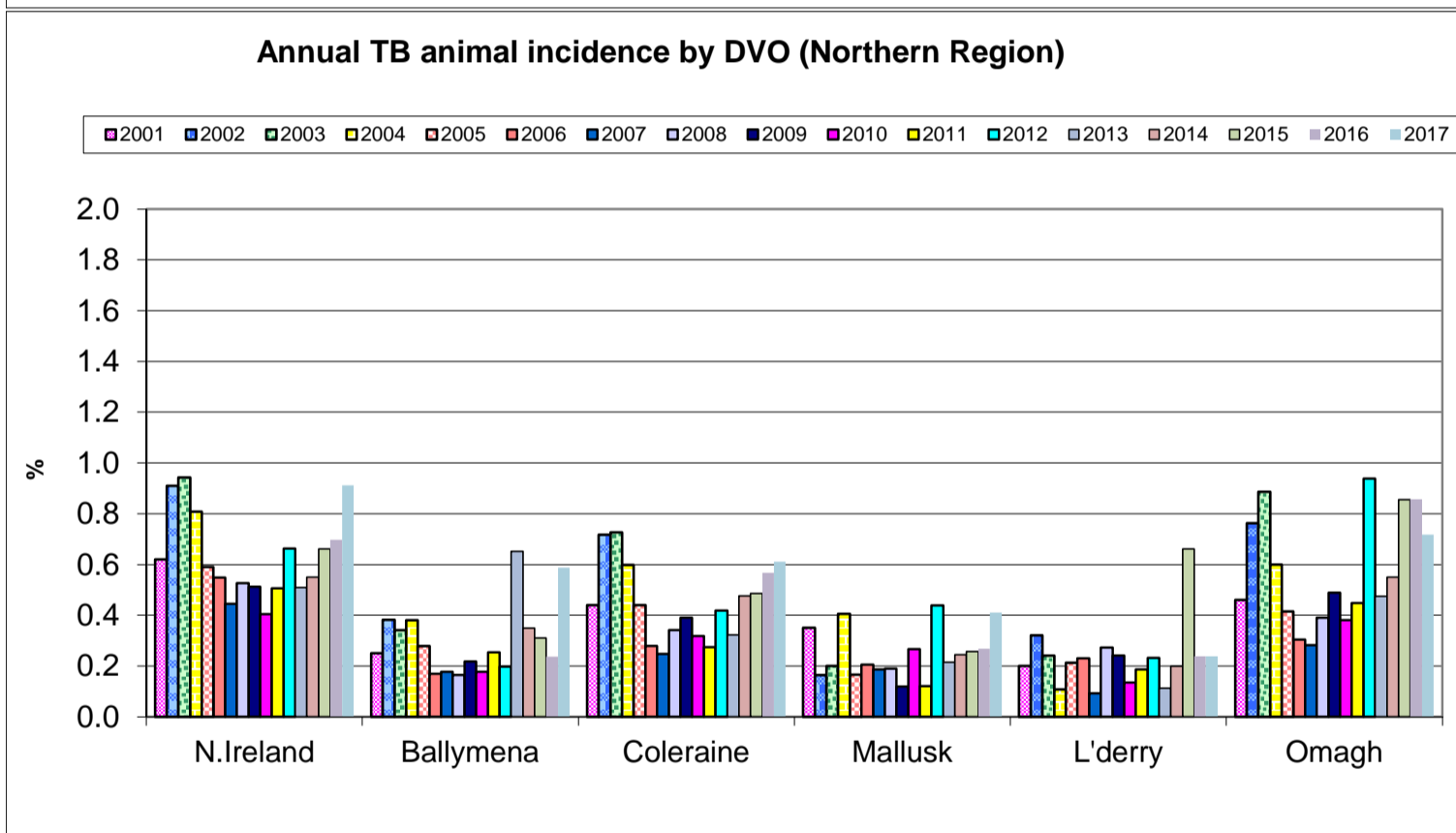
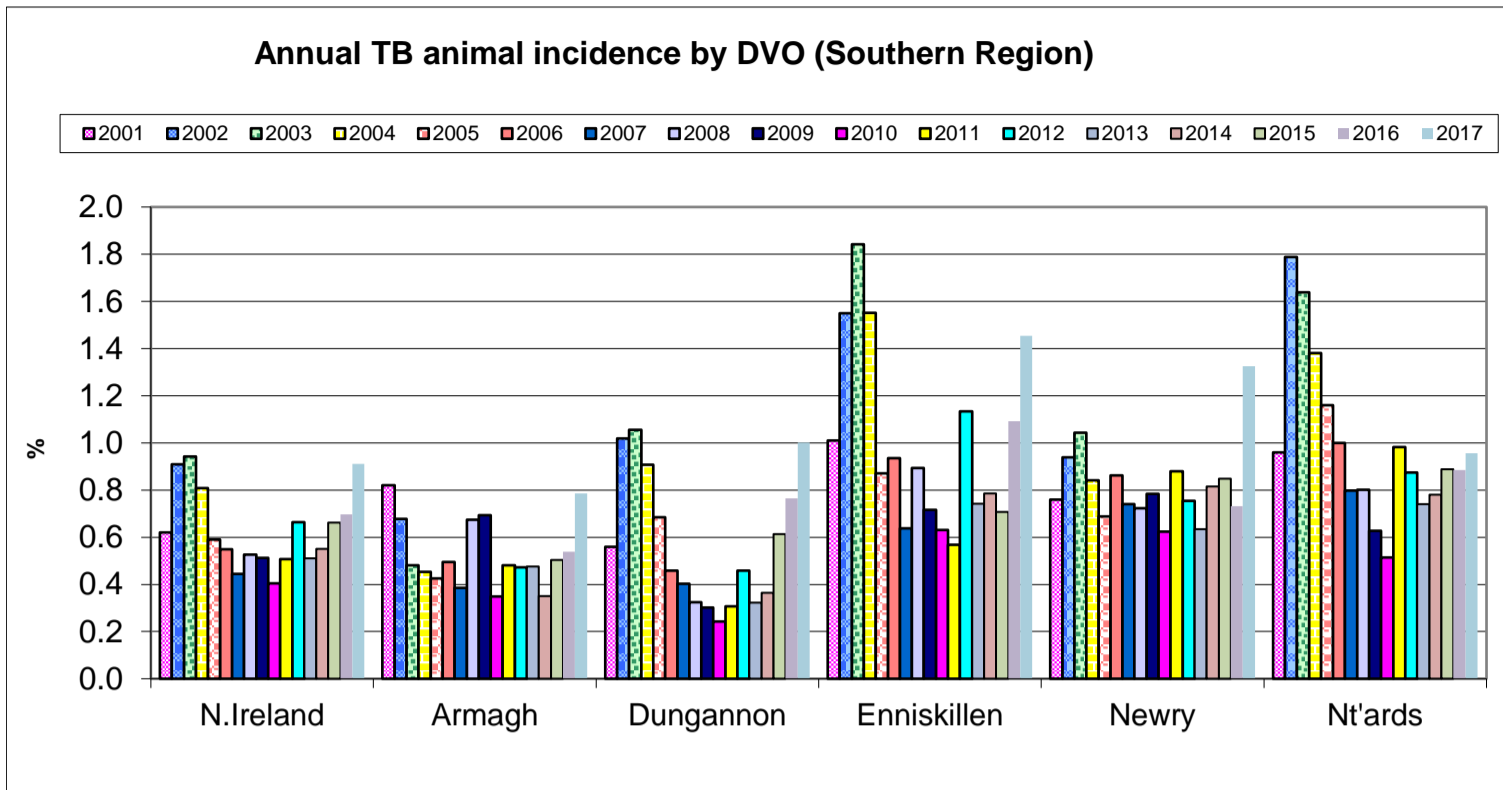
2001 2002 2003 2004 2005 2006 2007 2008 2009 2010 2011 2012 2013 2014 2015 2016 2017



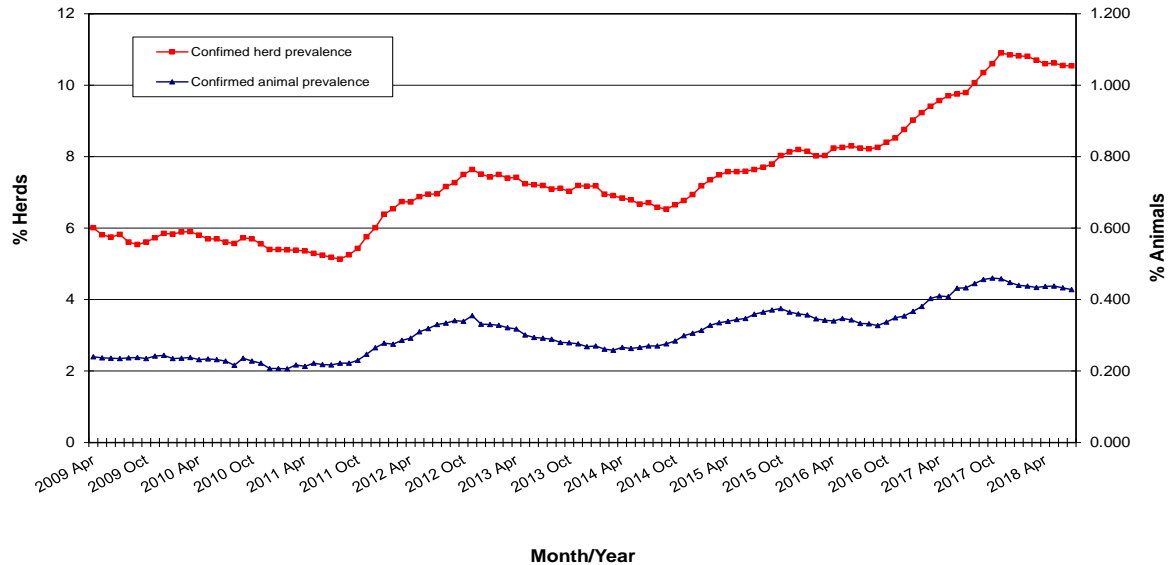
Annual TB herd incidence by DVO (Northern Region)

2001 2002 2003 2004 2005 2006 2007 2008 2009 2010 2011 2012 2013 2014 2015 2016 2017

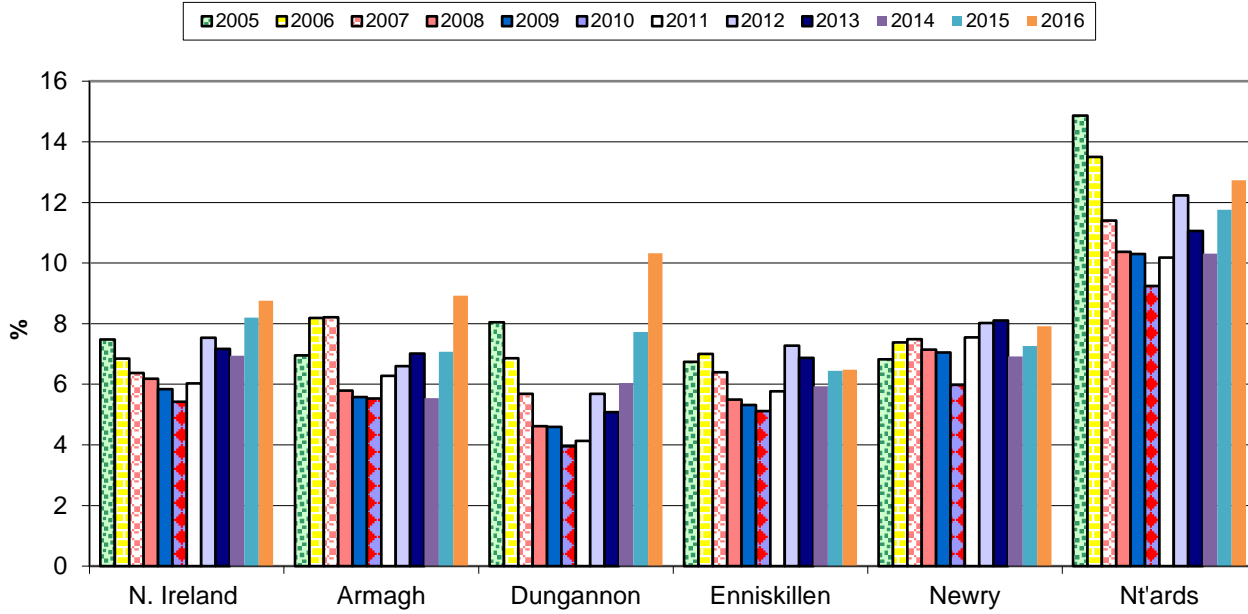




**TB Confirmed Herd[^] and Animal Prevalence:
(12 month moving average: April 2009 to July 2018)**

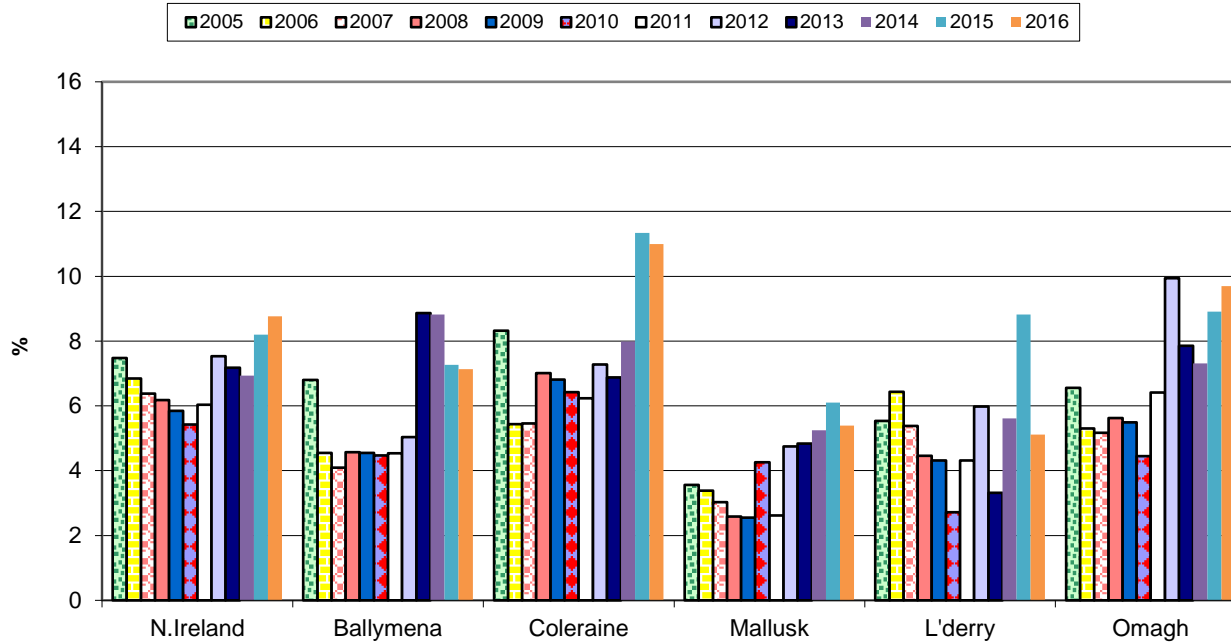


Annual confirmed TB herd prevalence by DVO (Southern Region)



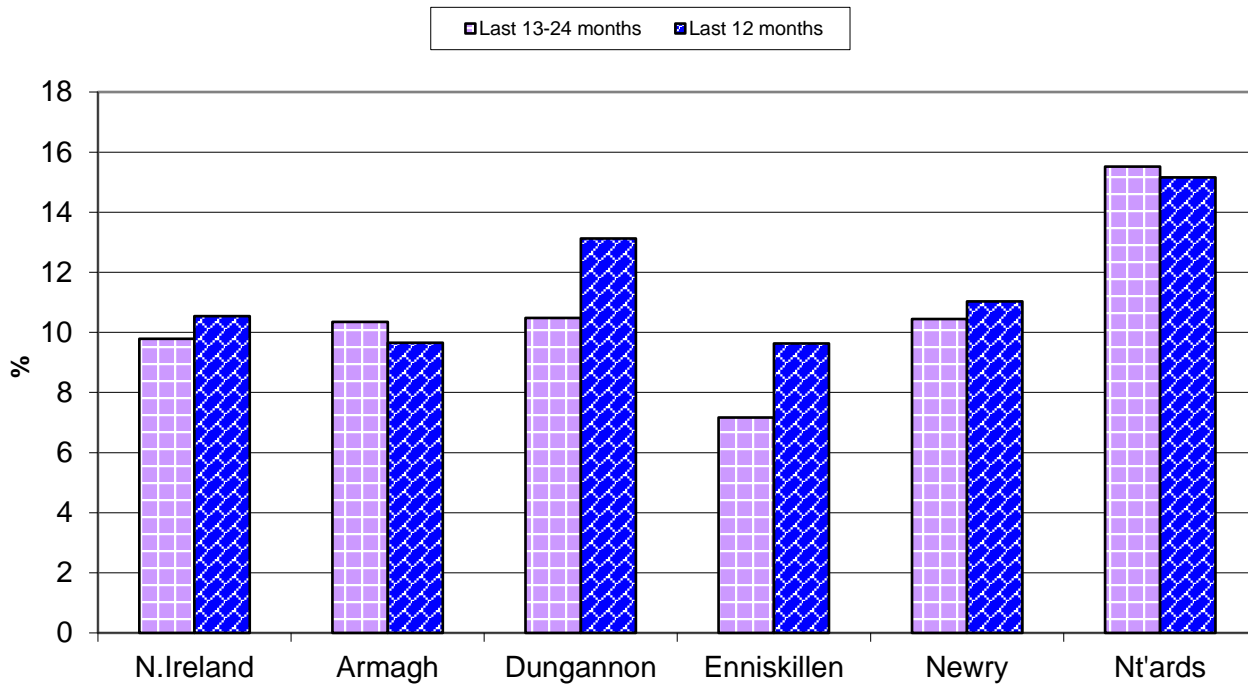
^ numerator includes all herds that had confirmed TB within the 12 month period

Annual confirmed TB herd prevalence by DVO (Northern Region)



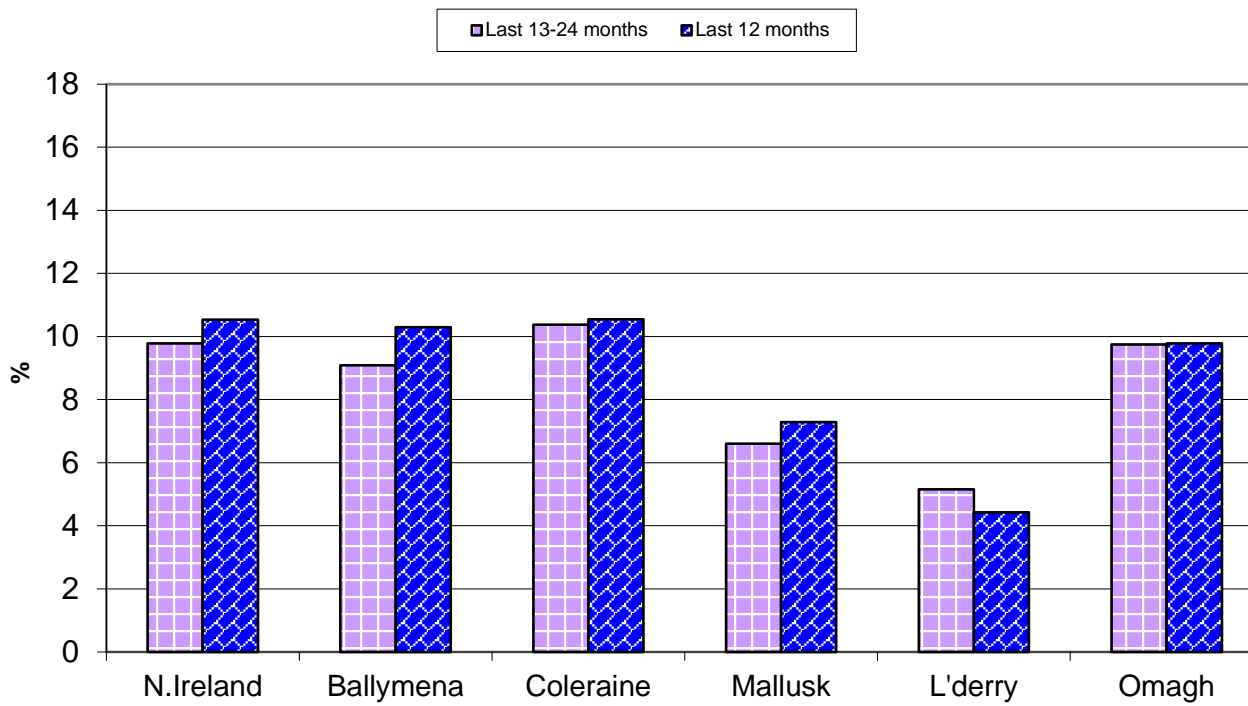
^ numerator includes all herds that had confirmed TB within the 12 month period

Annual confirmed TB herd prevalence[^] by DVO (Southern Region)



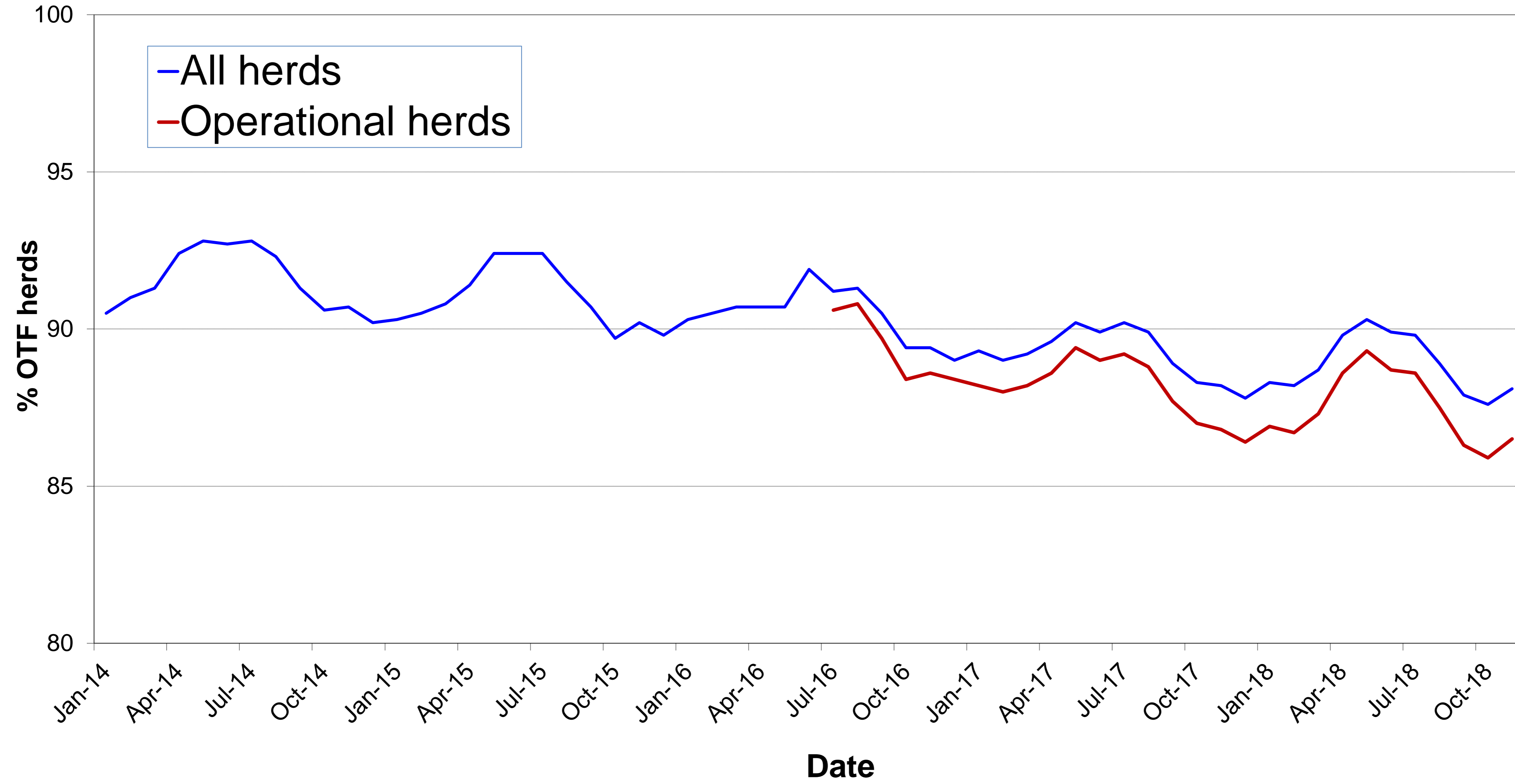
[^] numerator includes all herds that had confirmed TB within the 12 month period

Annual confirmed TB herd prevalence[^] by DVO (Northern Region)



[^] numerator includes all herds that had confirmed TB within the 12 month period

% herds that are officially tuberculosis free (OTF herds)



Month = November 2018

Ref.	Total	Armagh	Ballymena	Coleraine	Dungannon	Enniskillen	Mallusk	L'derry	Newry	Nt'ards	Omagh	
d1	No. of herds with TB reactors during month	414	37	41	58	45	41	18	10	66	47	51
d2	No. of new reactor herds during month	227	19	22	31	18	26	12	8	32	27	32
d3	No. of new reactor herds since start of year	1930	172	135	268	247	250	84	44	277	229	224
d4	No. of new reactor herds in the previous 12 months	2129	191	149	286	283	270	101	48	301	245	255
d26	No. of new reactor herds in the previous 13-24 months	2240	221	151	248	277	255	120	41	380	259	288
d5	No. of TB reactor animals during month	1570	94	130	200	110	149	80	39	271	272	225
d6	No. of TB reactor animals since start of year	14254	994	676	1435	1852	2033	571	222	2600	1738	2133
d7	No. of reactor animals in the previous 12 months	15509	1102	740	1533	2088	2205	645	236	2875	1800	2285
d27	No. of reactor animals in the previous 13-24 months	16076	1493	696	1498	2034	2689	614	165	3332	1978	1577
d20	Cumulative herd incidence in year (%)	8.93	8.17	10.32	11.17	9.45	8.84	5.86	5.45	7.72	12.65	8.20
d9	Annual herd incidence over the last 12 months (%)	9.42	8.59	10.98	11.52	10.39	9.17	6.46	5.58	8.14	13.09	8.87
d28	Annual herd incidence over the last 13-24 months (%)	9.73	9.62	11.01	9.76	9.89	8.53	7.55	4.63	10.21	13.68	9.82
d10	2017 Herd Incidence (%)	9.61	9.33	11.55	9.53	10.45	8.24	7.59	4.41	9.80	12.96	9.83
d11	2016 Herd Incidence (%)	7.45	8.23	6.34	8.72	8.77	6.58	4.52	3.41	6.35	10.62	8.01
d38	2015 Herd Incidence (%)	7.15	6.29	6.21	9.31	6.75	6.41	5.26	8.59	6.54	8.92	7.77
d30	2014 Herd Incidence (%)	6.03	4.84	7.24	7.71	5.02	5.48	5.24	4.83	5.55	8.03	6.62
d16	2013 Herd Incidence (%)	6.44	6.66	8.94	6.72	4.41	6.06	5.85	3.55	6.72	8.86	6.51
d21	Cumulative animal incidence in year (%)	0.859	0.562	0.556	0.631	0.915	1.231	0.416	0.367	1.067	0.913	1.049
d12	Annual animal incidence over the last 12 months (%)	0.888	0.586	0.577	0.648	0.971	1.264	0.423	0.362	1.126	0.905	1.058
d29	Annual animal incidence over the last 13-24 months (%)	0.920	0.787	0.555	0.632	0.942	1.556	0.404	0.246	1.327	1.021	0.713
d13	2017 Animal Incidence (%)	0.911	0.785	0.587	0.610	1.002	1.453	0.411	0.238	1.325	0.956	0.717
d14	2016 Animal Incidence (%)	0.697	0.539	0.237	0.567	0.765	1.092	0.269	0.238	0.731	0.885	0.857
d39	2015 Animal Incidence (%)	0.661	0.504	0.310	0.486	0.612	0.707	0.256	0.661	0.848	0.889	0.855
d31	2014 Animal Incidence (%)	0.550	0.350	0.349	0.476	0.364	0.786	0.244	0.199	0.815	0.781	0.551

d15	2013 Animal Incidence (%)	0.510	0.476	0.652	0.324	0.323	0.742	0.214	0.112	0.634	0.741	0.474
d34	APT during current month	4.05	2.47	4.84	3.65	2.64	3.77	2.33	2.76	5.81	5.88	4.98
d22	APT since start of year	4.76	3.45	3.04	3.33	5.27	7.25	2.68	2.53	5.96	4.93	6.36
d17	Current 12 month moving average APT	4.68	3.43	2.98	3.28	5.35	7.06	2.60	2.43	6.08	4.63	6.16
d19	2017 APT	5.07	4.57	3.40	3.31	5.89	8.74	2.78	1.73	7.57	5.00	4.24
d42	2016 APT	4.23	3.45	1.63	3.14	4.99	7.28	1.98	1.72	4.62	5.20	5.20
d40	2015 APT	4.06	3.37	2.08	2.80	4.31	4.46	1.88	4.51	5.33	5.06	5.38
d32	2014 APT	3.55	2.39	2.18	3.24	2.78	5.24	1.79	1.58	5.08	4.64	3.65
d18	2013 APT	3.27	3.14	4.53	2.20	2.42	4.90	1.64	0.86	3.87	4.33	3.05
d23	No. negative in contacts since start of year	956	57	102	108	137	57	25	9	165	150	146
d46	No. negative in contacts over last 12 months	996	63	102	112	140	57	25	10	174	155	158
d25	No. negative in contacts during 2017	891	92	14	189	43	83	50	1	242	74	103
d43	No. negative in contacts during 2016	579	37	11	78	24	105	8	57	17	63	179
d41	No. negative in contacts during 2015	755	59	10	23	62	37	45	9	73	95	342
d33	No. negative in contacts during 2014	1060	40	10	100	227	93	29	9	201	35	316
d24	No. negative in contacts during 2013	565	44	74	3	18	83	22	0	49	35	237
d37	Reactor removal time 2018	9.6	13.0	8.2	8.9	11.6	9.6	11.0	8.9	9.6	9.6	8.9
d47	Reactor removal time 2017	9.6	11.6	8.2	8.9	12.3	9.6	9.6	8.2	12.3	11.6	8.2
D44	Reactor removal time 2016	8.9	11.0	8.9	8.2	8.2	8.9	8.9	8.2	8.9	8.2	8.2
d36	Reactor removal time 2015	8.9	9.6	9.6	8.9	8.9	8.2	8.9	8.2	9.6	9.6	8.2
d45	Reactor removal time 2014	8.9	9.6	8.9	8.9	8.9	8.9	8.9	8.2	10.3	8.9	8.2
d35	Reactor removal time 2013	8.9	9.6	8.9	8.2	9.6	8.9	9.6	8.9	9.6	9.6	8.2

Tuberculosis: number of reactor herds by month and by DVO in 2018 and unique herd breakdowns during the year

2018		DVO_CODE										
Year	Month	Armagh	Ballymena	Coleraine	Dungannon	Enniskillen	L'Derry	Mallusk	Newry	Nt'Ards	Omagh	Total
2018	1	18	12	22	26	22	4	15	25	20	16	180
2018	2	15	7	35	27	28	9	9	31	22	18	201
2018	3	14	20	32	31	23	1	18	32	23	29	223
2018	4	18	12	24	22	22	3	1	29	13	19	163
2018	5	15	6	18	29	21	3	4	26	13	20	155
2018	6	8	9	21	12	13	4	5	17	19	15	123
2018	7	8	4	17	19	21	4	2	21	16	16	128
2018	8	22	15	23	25	19	0	5	17	20	16	162
2018	9	19	11	25	17	20	4	1	20	34	18	169
2018	10	16	17	20	21	35	4	12	27	22	25	199
2018	11	19	22	31	18	26	8	12	32	27	32	227
2018	12											0
Total		172	135	268	247	250	44	84	277	229	224	1930

Unique Herd Breakdowns		DVO_CODE										
Year	Armagh	Ballymena	Coleraine	Dungannon	Enniskillen	L'Derry	Mallusk	Newry	Nt'Ards	Omagh	Total Herds	
2018	229	182	358	362	323	52	113	415	302	309	2645	

Tuberculosis: number of reactor herds by month and by DVO in 2017 and unique herd breakdowns during the year

2017		DVO_CODE										
Year	Month	Armagh	Ballymena	Coleraine	Dungannon	Enniskillen	L'Derry	Mallusk	Newry	Nt'Ards	Omagh	Total
2017	1	31	22	24	32	20	7	9	38	22	29	234
2017	2	15	16	19	19	22	2	11	33	20	16	173
2017	3	19	15	27	30	21	1	17	38	28	29	225
2017	4	19	13	27	23	24	2	9	27	26	28	198
2017	5	11	8	24	15	17	2	7	34	16	20	154
2017	6	9	8	18	25	16	1	4	20	24	16	141
2017	7	11	7	9	9	8	3	4	29	15	18	113
2017	8	21	16	5	23	20	1	5	24	20	8	143
2017	9	22	12	20	18	30	3	6	24	15	21	171
2017	10	16	18	17	20	26	4	15	27	26	32	201
2017	11	21	9	31	42	22	9	16	47	17	42	256
2017	12	19	14	18	36	20	4	17	24	16	31	199
Total		214	158	239	292	246	39	120	365	245	290	2208

Unique Herd Breakdowns		DVO_CODE										
Year	Armagh	Ballymena	Coleraine	Dungannon	Enniskillen	L'Derry	Mallusk	Newry	Nt'Ards	Omagh	Total Herds	
2017	286	179	317	391	302	46	136	487	336	369	2849	

Tuberculosis: number of reactor herds by month and by DVO in 2016 and unique herd breakdowns during the year

2016		DVO_CODE										
Year	Month	Armagh	Ballymena	Coleraine	Dungannon	Enniskillen	L'Derry	Mallusk	Newry	Nt'Ards	Omagh	Total
2016	1	17	14	26	24	17	3	16	19	15	35	186
2016	2	15	8	16	24	14	1	8	9	11	16	122
2016	3	18	9	25	28	15	1	1	19	16	18	150
2016	4	25	12	29	17	24	2	8	26	10	35	188
2016	5	8	3	14	22	16	2	0	13	12	12	102
2016	6	8	5	14	15	11	2	2	9	17	9	92
2016	7	6	3	9	11	16	1	0	19	16	8	89
2016	8	10	1	14	12	11	0	1	13	19	13	94
2016	9	17	6	14	18	15	1	0	23	15	14	123
2016	10	20	7	19	26	17	3	5	21	20	28	166
2016	11	19	13	16	31	16	8	15	28	25	25	196
2016	12	26	7	27	21	29	6	17	39	30	29	231
Total		189	88	223	249	201	30	73	238	206	242	1739

Unique Herd Breakdowns		DVO_CODE										
Year	Armagh	Ballymena	Coleraine	Dungannon	Enniskillen	L'Derry	Mallusk	Newry	Nt'Ards	Omagh	Total Herds	
2016	231	111	319	322	236	49	93	311	249	325	2246	

A herd is defined as being a TB reactor herd if it had at least one TB reactor animal in that month and no TB reactor animals during the previous 12 months.

A TB unique herd breakdown is defined as a herd which has had at least one TB reactor during the specified calendar year irrespective of any TB reactors during the previous calendar year.

Tuberculosis: number of reactor animals by month and by DVO 2018

2018		DVO_CODE										
Year	Month	Armagh	Ballymena	Coleraine	Dungannon	Enniskillen	L'Derry	Mallusk	Newry	Nt'Ards	Omagh	Total
2018	1	71	37	96	199	178	20	88	233	180	206	1308
2018	2	40	69	121	186	262	24	71	159	123	149	1204
2018	3	81	69	122	308	199	15	90	307	116	327	1634
2018	4	117	22	166	165	186	12	48	305	101	186	1308
2018	5	64	34	99	175	159	14	17	258	81	222	1123
2018	6	54	150	101	142	117	12	24	186	146	116	1048
2018	7	95	20	120	140	141	29	2	207	189	128	1071
2018	8	121	41	136	164	157	25	19	228	213	223	1327
2018	9	113	45	101	110	229	10	41	242	179	156	1226
2018	10	144	59	173	153	256	22	91	204	138	195	1435
2018	11	94	130	200	110	149	39	80	271	272	225	1570
2018	12											0
Total		994	676	1435	1852	2033	222	571	2600	1738	2133	14254

Tuberculosis: number of reactor animals by month and by DVO 2017

2017		DVO_CODE										
Year	Month	Armagh	Ballymena	Coleraine	Dungannon	Enniskillen	L'Derry	Mallusk	Newry	Nt'Ards	Omagh	Total
2017	1	266	73	113	145	219	34	23	323	241	135	1572
2017	2	82	59	129	109	200	3	47	298	180	122	1229
2017	3	238	52	150	154	193	30	156	285	179	146	1583
2017	4	193	33	102	154	191	6	42	203	169	132	1225
2017	5	54	81	133	100	121	2	28	254	92	89	954
2017	6	34	26	211	146	184	4	15	272	167	93	1152
2017	7	111	34	91	88	232	12	54	233	169	108	1132
2017	8	45	145	67	220	279	2	42	236	187	84	1307
2017	9	152	55	144	161	219	14	37	306	125	168	1381
2017	10	122	52	99	200	304	8	36	346	123	133	1423
2017	11	94	65	102	449	216	30	73	322	158	227	1736
2017	12	108	64	98	236	172	14	74	275	62	152	1255
Total		1499	739	1439	2162	2530	159	627	3353	1852	1589	15949

Tuberculosis: number of reactor animals by month and by DVO 2016

2016		DVO_CODE										
Year	Month	Armagh	Ballymena	Coleraine	Dungannon	Enniskillen	L'Derry	Mallusk	Newry	Nt'Ards	Omagh	Total
2016	1	106	41	171	169	100	27	42	140	175	246	1217
2016	2	65	20	77	156	106	17	50	129	72	166	858
2016	3	73	39	75	107	109	11	14	151	74	148	801
2016	4	94	39	191	130	158	19	50	159	106	272	1218
2016	5	76	11	95	90	180	2	29	66	178	133	860
2016	6	23	15	46	62	90	10	16	61	78	57	458
2016	7	72	21	54	70	134	8	35	145	180	67	786
2016	8	98	10	88	99	143	0	17	128	115	129	827
2016	9	64	21	88	94	89	11	14	143	133	218	875
2016	10	129	24	118	185	234	19	15	217	120	192	1253
2016	11	92	23	160	332	189	17	60	186	213	117	1389
2016	12	102	21	157	108	331	20	61	254	188	140	1382
Total		994	285	1320	1602	1863	161	403	1779	1632	1885	11924

A TB reactor animal is defined as an animal where the manual interpretation field for a skin test is positive ('P') with the first test date being taken as the time at which the animal became a reactor. Animals with lesions at routine slaughter ('LRS') are not taken into account.

Month = November 2018

Ref.		Total	Armagh	Ballymena	Coleraine	Dungannon	Enniskillen	Mallusk	L'derry	Newry	Nt'ards	Omagh
b16	No. herds with any test completed in month	4721	427	331	554	540	602	178	358	675	421	635
b17	No. herds with any test, from start of year	21850	2145	1318	2422	2642	2850	1455	820	3612	1824	2762
b29	All herds with any test, from start of year	22579	2184	1364	2549	2762	2912	1508	864	3677	1885	2874
b18	No. herds with any test, from start of year (no cattle)	729	39	46	127	120	62	53	44	65	61	112
b19	No. herds with herd test completed in month	4254	357	292	511	497	563	320	152	610	390	562
b20	No. herds with herd test, from start of year	21624	2105	1308	2400	2613	2827	1433	808	3589	1810	2731
b30	All herds with herd test, from start of year	22369	2148	1356	2528	2736	2890	1486	853	3654	1873	2845
b21	No. herds with herd test, from start of year (no cattle)	745	43	48	128	123	63	53	45	65	63	114
b22	No. herds with herd test during last 12 months	22597	2223	1357	2482	2723	2944	1563	860	3698	1872	2875
b31	No. herds with herd test during last 13-24 months	23026	2298	1371	2540	2801	2990	1590	886	3723	1893	2934
b23	No. herds with herd test during 2017	22978	2293	1368	2507	2794	2986	1581	884	3725	1891	2949
b24	No. herds with herd test during 2016	23345	2297	1387	2557	2840	3057	1615	881	3750	1940	3021
b39	No. herds with herd test during 2015	23604	2304	1417	2610	2875	3121	1654	873	3748	1939	3063
b32	No. herds with herd test during 2014	23149	2274	1395	2490	2829	3049	1621	890	3658	1892	3051
b28	No. herds with herd test during 2013	22979	2237	1353	2530	2833	3054	1590	873	3618	1863	3028
b25	No. herds with any risk test completed	13266	1241	905	1623	1743	1796	815	316	2150	1181	1496
b26	No. herds with herd risk test completed	10990	868	807	1406	1433	1632	637	227	1755	994	1231
b27	No. herds with restricted herd test completed	4070	394	243	493	570	432	221	87	689	483	458

Month = November 2018

Ref	Total	Armagh	Ballymena	Coleraine	Dungannon	Enniskillen	Mallusk	L'derry	Newry	Nt'ards	Omagh	
c1	Total number of tests in current month	5639	579	389	633	663	656	452	213	813	509	732
c2	Total number of tests from start of year	45938	4830	2944	5302	6006	5346	2982	1373	7632	4148	5375
c3	No. tests during the same time period in the previous year	44452	5040	2691	5003	5831	5032	2853	1336	7176	4084	5406
c4	% change between years	3.2	-4.3	8.6	5.6	2.9	5.9	4.3	2.7	6.0	1.5	-0.6
c5	No. tests in the previous 12 months	50556	5366	3245	5749	6637	5884	3406	1532	8288	4537	5912
c6	No. animal tests in current month	387527	38105	26851	54778	41675	39482	34369	14142	46663	46251	45211
c7	No. animal tests from start of year	2997448	288356	222482	430497	351354	280362	212905	87830	436146	352198	335318
c8	No. animal tests during the same time period in the previous year	2824750	295386	191923	398933	327915	257388	190991	82878	406132	334538	338666
c9	% change between years	5.8	-2.4	13.7	7.3	6.7	8.2	10.3	5.6	6.9	5.0	-1.0
c10	No. animal tests in previous 12 months	3315742	320882	247960	466918	390230	312301	247705	97010	473198	388432	371106
c11	No. cattle herds eligible for TB testing	25458	2537	1523	2787	3055	3255	1805	996	4099	2127	3274
c12	No. cattle eligible for TB testing	1599459	161694	110748	208332	180015	156229	137381	61907	216212	169278	197665
c13	No. restricted herd tests during month	799	78	45	98	111	81	32	18	140	108	88
c14	No. animals tested	141549	16700	7624	20522	19191	9352	7541	4045	21685	22253	12636
c15	No. herd tests during month	4256	357	292	511	498	563	320	152	610	391	562
c16	No. animals tested	384463	37566	26646	54466	41363	39220	33904	14057	46279	46030	44932
c17	No. individual tests during month	1383	222	97	122	165	93	132	61	203	118	170
c18	No. animals tested	3064	539	205	312	312	262	465	85	384	221	279
c23	No. animals TB tested since start of year	1659736	176750	121614	227273	202333	165165	137313	60552	243569	190319	203417
c19	No. animals TB tested in previous 12 months	1747257	188050	128276	236538	215012	174472	152632	65105	255286	198819	216003
c24	No. animals TB tested in previous 13-24 months	1746599	189822	125307	236896	215965	172843	151867	67044	251059	193751	221249
c20	No. animals TB tested in 2017	1750170	190842	125843	235774	215867	174063	152684	66667	253109	193787	221579
c21	No. animals TB tested in 2016	1709508	184410	120059	232831	209246	170575	148773	67744	243436	184600	219947
c26	No. animals TB tested in 2015	1662355	173129	118652	230608	200883	169615	144926	67583	230622	180647	213478
c25	No. animals TB tested in 2014	1607660	166774	117083	214490	191534	163019	143992	61765	225643	177960	207187
c22	No. animals TB tested in 2013	1620055	172322	114133	214509	197072	166287	140842	62228	224389	180893	210490

Month = November 2018

Ref		Total	Armagh	Ballymena	Coleraine	Dungannon	Enniskillen	Mallusk	L'derry	Newry	Nt'ards	Omagh
	<i>All Herds</i>											
f1	No. of Officially Tuberculosis Free Herds (OTF)	26353	2600	1574	2992	3178	3264	2006	1145	4165	1949	3480
f2	No. of Officially Tuberculosis Suspended Herds (OTS)	1402	188	66	126	132	121	139	50	290	152	138
f3	No. of Officially Tuberculosis Withdrawn Herds (OTW)	2159	242	122	225	277	227	112	51	387	290	226
f4	% herds that are OTF	88.1	85.8	89.3	89.5	88.6	90.4	88.9	91.9	86.0	81.5	90.5
f5	% herds that are OTS	4.7	6.2	3.7	3.8	3.7	3.3	6.2	4.0	6.0	6.4	3.6
f6	% herds that are OTW	7.2	8.0	6.9	6.7	7.7	6.3	5.0	4.1	8.0	12.1	5.9
	<i>Operational Herds</i>											
	No. of Officially Tuberculosis Free Herds (OTF)	21026	2047	1257	2339	2534	2759	1510	859	3345	1614	2762
	No. of Officially Tuberculosis Suspended Herds (OTS)	1218	153	65	118	112	107	104	49	259	133	118
	No. of Officially Tuberculosis Withdrawn Herds (OTW)	2059	227	122	221	266	220	94	49	371	279	210
	% herds that are OTF	86.5	84.3	87.0	87.3	87.0	89.4	88.4	89.8	84.2	79.7	89.4
	% herds that are OTS	5.0	6.3	4.5	4.4	3.8	3.5	6.1	5.1	6.5	6.6	3.8
	% herds that are OTW	8.5	9.4	8.4	8.3	9.1	7.1	5.5	5.1	9.3	13.8	6.8

		Month = July 2018										
		(Data lagged by 4 months)										
Ref		Total	Armagh	Ballymena	Coleraine	Dungannon	Enniskillen	Mallusk	L'derry	Newry	Nt'ards	Omagh
e19	Num. TB culture positive animals that were not TB reactors in last 12 months	806	95	27	76	119	37	42	5	210	121	74
e20	Num. TB culture positive animals that were not TB reactors in last 13-24 months	764	76	37	78	99	36	47	15	192	119	65
e3	Num. TB culture positive animals that were not TB reactors in 2017	782	91	41	83	113	40	51	8	168	128	59
e4	Num. TB culture positive animals that were not TB reactors in 2016	714	64	35	89	101	36	34	13	173	104	65
e5	Num. TB culture positive animals that were not TB reactors in 2015	676	71	41	95	84	27	38	18	120	112	70
e6	Num. TB culture positive animals that were not TB reactors in 2014	575	68	37	54	66	38	53	12	100	80	67
e2	Num. TB culture positive animals that were not TB reactors in 2013	583	63	33	32	98	28	30	7	131	92	69
e21	No. herds with TB culture positive animals that were not TB reactors in last 12 months	482	60	19	45	63	26	30	4	106	76	53
e22	No. herds with TB culture positive animals that were not TB reactors in last 13-24 months	468	52	27	47	63	26	33	13	101	70	36
e9	No. herds with TB culture positive animals that were not TB reactors in 2017	466	56	28	43	62	26	31	8	93	77	42
e10	No. herds with TB culture positive animals that were not TB reactors in 2016	469	45	21	57	63	26	31	11	100	68	47
e11	No. herds with TB culture positive animals that were not TB reactors in 2015	449	50	25	70	55	20	27	12	67	78	45
e12	No. herds with TB culture positive animals that were not TB reactors in 2014	372	47	25	37	48	27	27	10	66	51	34
e8	No. herds with TB culture positive animals that were not TB reactors in 2013	381	50	14	30	46	20	20	5	83	60	53
e23	% of TB animals that were TB culture positive that were not TB reactors in last 12 months	4.9	8.3	3.3	5.4	4.4	1.5	6.5	2.5	6.3	7.1	3.4
e24	% of TB animals that were TB culture positive that were not TB reactors in last 13-24 months	5.0	4.9	7.5	4.8	5.5	1.5	8.1	8.7	6.4	5.7	3.9
e15	% of TB animals that were TB culture positive that were not TB reactors in 2017	4.7	5.7	5.3	5.5	5.0	1.6	7.5	4.8	4.8	6.5	3.6
e16	% of TB animals that were TB culture positive that were not TB reactors in 2016	5.6	6.0	10.9	6.3	5.9	1.9	7.8	7.5	8.9	6.0	3.3
e17	% of TB animals that were TB culture positive that were not TB reactors in 2015	5.8	7.5	10.0	7.8	6.4	2.2	9.3	3.9	5.8	6.5	3.7
e18	% of TB animals that were TB culture positive that were not TB reactors in 2014	6.1	10.4	8.3	5.0	8.7	2.9	13.1	8.9	5.2	5.4	5.5
e14	% of TB animals that were TB culture positive that were not TB reactors in 2013	6.6	7.1	4.2	4.4	13.4	2.2	9.0	9.1	8.4	6.4	6.5

		Month = July 2018										
Ref	(Data lagged by 4 months)	Total	Armagh	Ballymena	Coleraine	Dungannon	Enniskillen	Mallusk	L'derry	Newry	Nt'ards	Omagh
g31	No. of confirmed TB reactors during last 12 months	6680	459	327	586	1097	1030	227	88	1207	785	874
g32	No. of confirmed TB reactors during last 13-24 months	6712	646	261	840	807	956	287	83	1066	961	805
g3	No. of confirmed TB reactors 2017	7058	692	392	735	884	976	334	72	1323	925	725
g4	No. of confirmed TB reactors 2016	5339	429	145	714	807	759	174	98	622	801	790
g5	No. of confirmed TB reactors 2015	5306	428	228	658	591	561	194	284	784	718	860
g6	No. of confirmed TB reactors 2014	4346	294	229	591	392	561	156	84	725	722	592
g2	No. of confirmed TB reactors 2013	3765	377	422	373	255	520	116	40	541	636	485
g33	Total animals with confirmed TB during last 12 months	7486	554	354	662	1216	1067	269	93	1417	906	948
g34	Total animals with confirmed TB in last 13-24 months	7476	722	298	918	906	992	334	98	1258	1080	870
g9	Total animals with confirmed TB in 2017	7840	783	433	818	997	1016	385	80	1491	1053	784
g10	Total animals with confirmed TB in 2016	6053	493	180	803	908	795	208	111	795	905	855
g11	Total animals with confirmed TB in 2015	5982	499	269	753	675	588	232	302	904	830	930
g12	Total animals with confirmed TB in 2014	4921	362	266	645	458	599	209	96	825	802	659
g8	Total animals with confirmed TB in 2013	4348	440	455	405	353	548	146	47	672	728	554
g35	Confirmed TB animal prevalence in last 12 months (%)	0.428	0.295	0.280	0.281	0.563	0.620	0.179	0.141	0.553	0.465	0.435
g36	Confirmed TB animal prevalence in last 13-24 months (%)	0.433	0.386	0.246	0.394	0.432	0.584	0.224	0.147	0.508	0.568	0.394
g15	Confirmed TB animal prevalence in 2017 (%)	0.448	0.410	0.344	0.347	0.462	0.584	0.252	0.120	0.589	0.543	0.354
g16	Confirmed TB animal prevalence in 2016 (%)	0.354	0.267	0.150	0.345	0.434	0.466	0.140	0.164	0.327	0.489	0.389
g17	Confirmed TB animal prevalence in 2015 (%)	0.360	0.288	0.226	0.326	0.336	0.347	0.160	0.447	0.392	0.459	0.436
g18	Confirmed TB animal prevalence in 2014 (%)	0.306	0.217	0.227	0.301	0.239	0.367	0.145	0.155	0.366	0.451	0.318
g14	Confirmed TB animal prevalence in 2013 (%)	0.268	0.255	0.399	0.189	0.179	0.330	0.104	0.076	0.299	0.402	0.263
g37	No. herds with confirmed TB in last 12 months	2408	218	141	265	362	286	116	39	409	286	286
g38	No. herds with confirmed TB in last 13-24 months	2279	239	126	266	297	217	107	46	390	299	292
g21	No. herds with confirmed TB in 2017	2493	254	158	260	339	253	126	42	429	315	317
g22	No. herds with confirmed TB in 2016	2045	205	99	281	293	198	87	45	297	247	293
g23	No. herds with confirmed TB in 2015	1936	163	103	296	222	201	101	77	272	228	273
g24	No. herds with confirmed TB in 2014	1606	126	123	199	171	181	85	50	253	195	223
g20	No. herds with confirmed TB in 2013	1648	157	120	174	144	210	77	29	293	206	238
g39	Confirmed TB herd prevalence in last 12 months (%)	10.54	9.65	10.30	10.55	13.13	9.63	7.29	4.42	11.04	15.16	9.78
g40	Confirmed TB herd prevalence in last 13-24 months (%)	9.79	10.35	9.09	10.37	10.48	7.16	6.60	5.16	10.45	15.52	9.75

g27	Confirmed TB herd prevalence in 2017 (%)	10.85	11.08	11.55	10.37	12.13	8.47	7.97	4.75	11.52	16.66	10.75
g28	Confirmed TB herd prevalence in 2016 (%)	8.76	8.92	7.14	10.99	10.32	6.48	5.39	5.11	7.92	12.73	9.70
g29	Confirmed TB herd prevalence in 2015 (%)	8.20	7.07	7.27	11.34	7.72	6.44	6.11	8.82	7.26	11.76	8.91
g30	Confirmed TB herd prevalence in 2014 (%)	6.94	5.54	8.82	7.99	6.04	5.94	5.24	5.62	6.92	10.31	7.31
g26	Confirmed TB herd prevalence in 2013 (%)	7.17	7.02	8.87	6.88	5.08	6.88	4.84	3.32	8.10	11.06	7.86

Explanatory Comments for Tuberculosis Statistics - B. Testing Herds

Ref	Data Title	Explanation
B16	No. herds with any test completed in month	Test of any disease status and size (herd or animal-level). Tests with no animals are excluded.
B17	No. herds with any test, from start of year	Test of any disease status and size (herd or animal-level) carried out on a herd since 1st January. Tests with no animals are excluded.
B29	All herds with any test, from start of year	Skin test of any disease status and size (herd or animal-level) carried out on a herd since 1st January. Tests with no animals are included.
B18	No. herds with any test, from start of year (no cattle)	Herd or individual test of any disease status (routine, risk or restricted) where no cattle were recorded at all such tests since 1st January.
B19	No. herds with herd test completed in month	Herd level test of any disease status (routine, risk or restricted) completed during the above month. Tests with no animals are excluded.
B20	No. herds with herd test, from start of year	Herd level test of any disease status (routine, risk or restricted) completed since 1st January. Tests with no animals are excluded.
B30	All herds with herd test, from start of year	Herd level test of any disease status (routine, risk or restricted) completed since 1st January. Tests with no animals are included.
B21	No. herds with herd test, from start of year (no cattle)	Herd level test of any disease status (routine, risk or restricted) where no cattle were recorded at all such herd tests since 1st January.
B22	No. herds with herd test during last 12 months	Herd level test of any disease status (routine, risk or restricted) completed in the 12 month period from the above month. Tests with no animals are excluded.
B31	No. herds with herd test during last 13-24 months	Herd level test of any disease status (routine, risk or restricted) completed in the 13-24 months from the above month. Tests with no animals are excluded.
B39	No. herds with herd test during the year	Herd level test of any disease status (routine, risk or restricted) completed in the calendar year. Tests with no animals are excluded.
B32	No. herds with herd test during the year	Herd level test of any disease status (routine, risk or restricted) completed in the calendar year. Tests with no animals are excluded.
B28	No. herds with herd test during the year	Herd level test of any disease status (routine, risk or restricted) completed in the calendar year. Tests with no animals are excluded.
B23	No. herds with herd test during the year	Herd level test of any disease status (routine, risk or restricted) completed in the calendar year. Tests with no animals are excluded.
B24	No. herds with herd test during the year	Herd level test of any disease status (routine, risk or restricted) completed in the calendar year. Tests with no animals are excluded.
B25	No. herds with any risk test completed	Herd has had a herd or individual level risk test since start of calendar year and number tested > 0.
B26	No. herds with herd risk test completed	Herd has had a herd level risk test since start of calendar year and number tested > 0.
B27	No. herds with restricted herd test completed	Herd has had a restricted herd test (RHT, RH1, RH2) since start of calendar year and number tested > 0.

Explanatory Comments for Tuberculosis Statistics - C. Testing Animals

Ref	Data Title	Explanation
C1	Total number of tests in current month	Number of herds and individual tests performed in the month stated above. Tests with no animals are excluded.
C2	Total number of tests from start of year	From 1st January. Tests with no animals are excluded.
C3	No. tests during the same time period in the previous year	From 1st January of previous year. Tests with no animals are excluded.
C4	% change between years	Difference between the number of tests carried out during the current year and the number carried out in the previous expressed as a percentage.
C5	No. tests in the previous 12 months	Last 12 month period from the above month. Tests with no animals are excluded.
C6	No. animal tests in current month	Animal test = a count of the number of animals tested within each herd or individual test. Some animals may have been tested multiple times during the year.
C7	No. animal tests from start of year	Number of animal tests carried out since 1st January.
C8	No. animal tests during the same time period in the previous year	Number of animal tests carried out from 1st January in the previous year over the same time interval as recorded for the current year.
C9	% change between years	Difference between the number of animal tests during the current year and the number carried out in the previous expressed as a percentage.
C10	No. animal tests in previous 12 months	Last 12 month period from the above month.
C11	No. cattle eligible for TB testing	Based on the average number of animals presented at TB herd tests over last 4 years.
C12	No. cattle herds eligible for TB testing	Based on cattle being presented for a TB herd tests over last 4 years. Herds with '0' cattle are excluded.

C13	No. restricted herd tests during month	All restricted herd tests (RHT, RH1 and RH2) carried out during the above month.
C14	No. animals tested	Total of the animals reported as being tested within restricted herd tests (RHT, RH1, RH2) during the above month.
C15	No. herd tests during month	Total of the animals reported as being tested within all herd tests during the above month.
C16	No. animals tested	Total of the animals reported as being tested within all herd tests during the above month.
C17	No. individual tests during month	Total of the animals reported as being tested within all individual tests during the above month.
C18	No. animals tested	Total of the animals reported as being tested within all individual tests during the above month.
C23	No. animals TB tested since start of year	Animals identified as having had at least one TB skin test since the start of the calendar year. Due to the same animals being sampled in different DVO areas, the 'Total' is not the sum of the DVO figures.
C19	No. animals TB tested in previous 12 months	Animals identified as having had at least one TB skin test during the last 12 month period from the above month. Due to the same animals being sampled in different DVO areas, the 'Total' is not the sum of the DVO figures.
C24	No. animals TB tested in previous 13-24 months	Animals identified as having had at least one TB skin test during the last 13-24 months from the above month. Due to the same animals being sampled in different DVO areas, the 'Total' is not the sum of the DVO figures.
C26	No. animals TB tested in the year	Animals identified as having had at least one TB skin test during the calendar year. Due to the same animals being sampled in different DVO areas, the 'Total' is not the sum of the DVO figures.
C25	No. animals TB tested in the year	Animals identified as having had at least one TB skin test during the calendar year. Due to the same animals being sampled in different DVO areas, the 'Total' is not the sum of the DVO figures.
C22	No. animals TB tested in the year	Animals identified as having had at least one TB skin test during the calendar year. Due to the same animals being sampled in different DVO areas, the 'Total' is not the sum of the DVO figures.
C20	No. animals TB tested in the year	Animals identified as having had at least one TB skin test during the calendar year. Due to the same animals being sampled in different DVO areas, the 'Total' is not the sum of the DVO figures.
C21	No. animals TB tested in the year	Animals identified as having had at least one TB skin test during the calendar year. Due to the same animals being sampled in different DVO areas, the 'Total' is not the sum of the DVO figures.
Explanatory Comments for Tuberculosis Statistics - D. Results		
Ref	Data Title	Explanation
D1	No. of herds with TB reactors during month	A herd is included in this figure if the herd number had a TB skin test reactor during the above month.
D2	No. of new reactor herds during month	A herd is defined as being a TB reactor herd if it had at least one TB reactor animal in that month and no TB reactor animals during the previous 12 months.
D3	No. of new reactor herds since start of year	= Since 1st January
D4	No. of new reactor herds in the previous 12 months	Last 12 month period from the above month.
D26	No. of new reactor herds in previous 13-24 months	Last 13-24 month period from the above month.
D5	No. of TB reactor animals during month	A TB reactor animal is defined as an animal where the manual interpretation field for a skin test is positive ('P') with the first test date being taken as the time at which the animal became a reactor. Currently animals with lesions at routine slaughter (*LRS*) are not taken into account.
D6	No. of TB reactor animals since start of year	= Since 1st January
D7	No. of reactor animals in the previous 12 months	Last 12 month period from the above month.
D27	No. of reactor animals in previous 13-24 months	Last 13-24 month period from the above month.
D20	Cumulative herd incidence in year (%)	Number of NEW reactor herds since the start of the calendar year as a proportion of cattle herds which have presented cattle for a TB herd test during the same time period.
D9	Annual herd incidence over the last 12 months (%)	Number of NEW reactor herds during the last 12 months as a proportion of cattle herds which have presented cattle for a TB herd test during the same time period.
D28	Annual herd incidence over the last 13-24 months (%)	Number of NEW reactor herds during the last 13-24 months as a proportion of cattle herds which have presented cattle for a TB herd test during the same time period.
D38	In-year Herd Incidence (%)	Number of NEW reactor herds during the year as a proportion of cattle herds which have presented cattle for a TB herd test during the same time period.
D30	In-year Herd Incidence (%)	Number of NEW reactor herds during the year as a proportion of cattle herds which have presented cattle for a TB herd test during the same time period.
D16	In-year Herd Incidence (%)	Number of NEW reactor herds during the year as a proportion of cattle herds which have presented cattle for a TB herd test during the same time period.
D10	In-year Herd Incidence (%)	Number of NEW reactor herds during the year as a proportion of cattle herds which have presented cattle for a TB herd test during the same time period.
D11	In-year Herd Incidence (%)	Number of NEW reactor herds during the year as a proportion of cattle herds which have presented cattle for a TB herd test during the same time period.
D21	Cumulative animal incidence in year (%)	Number of reactor animals during the above month as a proportion of cattle which have been presented for a TB test during the same time period.
D12	Annual animal incidence over the last 12 months (%)	Number of reactor animals during the last 12 months as a proportion of cattle which have been presented for a TB test during the same time period.
D29	Annual animal incidence over the last 13-24 months (%)	Number of reactor animals during the last 13-24 months as a proportion of cattle which have been presented for a TB test during the same time period.
D39	In year Animal Incidence (%)	Number of reactor animals during the year as a proportion of cattle which have been presented for a TB herd test during the same time period.

D31	In year Animal Incidence (%)	Number of reactor animals during the year as a proportion of cattle which have been presented for a TB herd test during the same time period.
D15	In year Animal Incidence (%)	Number of reactor animals during the year as a proportion of cattle which have been presented for a TB herd test during the same time period.
D13	In year Animal Incidence (%)	Number of reactor animals during the year as a proportion of cattle which have been presented for a TB herd test during the same time period.
D14	In year Animal Incidence (%)	Number of reactor animals during the year as a proportion of cattle which have been presented for a TB herd test during the same time period.
D34	APT during current month	= The reactor disclosure rate per 1,000 animal tests current calendar month.
D22	APT since start of year	The reactor disclosure rate per 1,000 animal tests since the start of the calendar year.
D17	Current 12 month moving average APT	The reactor disclosure rate per 1,000 animal tests. Current refers to the rate over the last 12 months.
D42	In year APT	The reactor disclosure rate per 1,000 animal tests during the calendar year.
D40	In year APT	The reactor disclosure rate per 1,000 animal tests during the calendar year.
D32	In year APT	The reactor disclosure rate per 1,000 animal tests during the calendar year.
D18	In year APT	The reactor disclosure rate per 1,000 animal tests during the calendar year.
D19	In year APT	The reactor disclosure rate per 1,000 animal tests during the calendar year.
D23	No. negative in contacts since start of year	Number of animals taken as negative in contacts since the start of the year.
d46	No. Negative in contacts over last 12 months (%)	= Number of negative in contacts during the last 12 months
D43	No. negative in contacts during the year	Number of animals taken as negative in contacts during the year.
D41	No. negative in contacts during the year	Number of animals taken as negative in contacts during the year.
D33	No. negative in contacts during the year	Number of animals taken as negative in contacts during the year.
D24	No. negative in contacts during the year	Number of animals taken as negative in contacts during the year.
D25	No. negative in contacts during the year	Number of animals taken as negative in contacts during the year.
D37	Reactor removal time during the year	Figures given are median values for working days estimated from calendar days (calendar days multiplied by 0.685). Reactors which are not yet slaughtered or where they they were first declared as reactors at slaughter are excluded.
D45	Reactor removal time during the year	Figures given are median values for working days estimated from calendar days (calendar days multiplied by 0.685). Reactors which are not yet slaughtered or where they they were first declared as reactors at slaughter are excluded.
D35	Reactor removal time during the year	Figures given are median values for working days estimated from calendar days (calendar days multiplied by 0.685). Reactors which are not yet slaughtered or where they they were first declared as reactors at slaughter are excluded.
D44	Reactor removal time during the year	Figures given are median values for working days estimated from calendar days (calendar days multiplied by 0.685). Reactors which are not yet slaughtered or where they they were first declared as reactors at slaughter are excluded.
D36	Reactor removal time during the year	Figures given are median values for working days estimated from calendar days (calendar days multiplied by 0.685). Reactors which are not yet slaughtered or where they they were first declared as reactors at slaughter are excluded.

g35	Confirmed TB animal prevalence in last 12 months (%)	Number of TB reactors that were confirmed during the last 12 months by the presence of visible lesions at slaughter and/or by laboratory confirmation (histopathology and/or culture) plus the number of other animals where M. bovis was cultured from TB-like lesions found at slaughter during the last 12 months that were not identified as TB reactor animals divided by the number of animals tuberculin tested during the last 12 months expressed as a %
g36	Confirmed TB animal prevalence in last 13-24 months (%)	Number of TB reactors that were confirmed during the last 13-24 months by the presence of visible lesions at slaughter and/or by laboratory confirmation (histopathology and/or culture) plus the number of other animals where M. bovis was cultured from TB-like lesions found at slaughter during the last 13-24 months that were not identified as TB reactor animals divided by the number of animals tuberculin tested during the last 13-24 months expressed as a %
g18	Confirmed TB animal prevalence in year (%)	Number of TB reactors that were confirmed during the year by the presence of visible lesions at slaughter and/or by laboratory confirmation (histopathology and/or culture) plus the number of other animals where M. bovis was cultured from TB-like lesions found at slaughter during the year that were not identified as TB reactor animals divided by the number of animals tuberculin tested during the year expressed as a %
g14	Confirmed TB animal prevalence in year (%)	Number of TB reactors that were confirmed during the year by the presence of visible lesions at slaughter and/or by laboratory confirmation (histopathology and/or culture) plus the number of other animals where M. bovis was cultured from TB-like lesions found at slaughter during the year that were not identified as TB reactor animals divided by the number of animals tuberculin tested during the year expressed as a %
g15	Confirmed TB animal prevalence in year (%)	Number of TB reactors that were confirmed during the year by the presence of visible lesions at slaughter and/or by laboratory confirmation (histopathology and/or culture) plus the number of other animals where M. bovis was cultured from TB-like lesions found at slaughter during the year that were not identified as TB reactor animals divided by the number of animals tuberculin tested during the year expressed as a %
g16	Confirmed TB animal prevalence in year (%)	Number of TB reactors that were confirmed during the year by the presence of visible lesions at slaughter and/or by laboratory confirmation (histopathology and/or culture) plus the number of other animals where M. bovis was cultured from TB-like lesions found at slaughter during the year that were not identified as TB reactor animals divided by the number of animals tuberculin tested during the year expressed as a %
g17	Confirmed TB animal prevalence in year (%)	Number of TB reactors that were confirmed during the year by the presence of visible lesions at slaughter and/or by laboratory confirmation (histopathology and/or culture) plus the number of other animals where M. bovis was cultured from TB-like lesions found at slaughter during the year that were not identified as TB reactor animals divided by the number of animals tuberculin tested during the year expressed as a %
g37	No. herds with confirmed TB in last 12 months	Herds that had at least one confirmed TB animal during the last 12 months.
g38	No. herds with confirmed TB in last 13-24 months	Herds that had at least one confirmed TB animal during the last 13-24 months.
g24	No. herds with confirmed TB in year	Herds that had at least one confirmed TB animal during the year.
g20	No. herds with confirmed TB in year	Herds that had at least one confirmed TB animal during the year.
g21	No. herds with confirmed TB in year	Herds that had at least one confirmed TB animal during the year.
g22	No. herds with confirmed TB in year	Herds that had at least one confirmed TB animal during the year.
g23	No. herds with confirmed TB in year	Herds that had at least one confirmed TB animal during the year.
g39	Confirmed TB herd prevalence in last 12 months (%)	Number of herds that had at least one confirmed TB animal during the last 12 months divided the number of herds that presented cattle at a TB herd test expressed as a %.
g40	Confirmed TB herd prevalence in last 13-24 months (%)	Number of herds that had at least one confirmed TB animal during the last 13-24 months divided the number of herds that presented cattle at a TB herd test expressed as a %.
g30	Confirmed TB herd prevalence in year (%)	Number of herds that had at least one confirmed TB animal during the year divided the number of herds that presented cattle at a TB herd test expressed as a %.
g26	Confirmed TB herd prevalence in year (%)	Number of herds that had at least one confirmed TB animal during the year divided the number of herds that presented cattle at a TB herd test expressed as a %.
g27	Confirmed TB herd prevalence in year (%)	Number of herds that had at least one confirmed TB animal during the year divided the number of herds that presented cattle at a TB herd test expressed as a %.
g28	Confirmed TB herd prevalence in year (%)	Number of herds that had at least one confirmed TB animal during the year divided the number of herds that presented cattle at a TB herd test expressed as a %.
g29	Confirmed TB herd prevalence in year (%)	Number of herds that had at least one confirmed TB animal during the year divided the number of herds that presented cattle at a TB herd test expressed as a %.