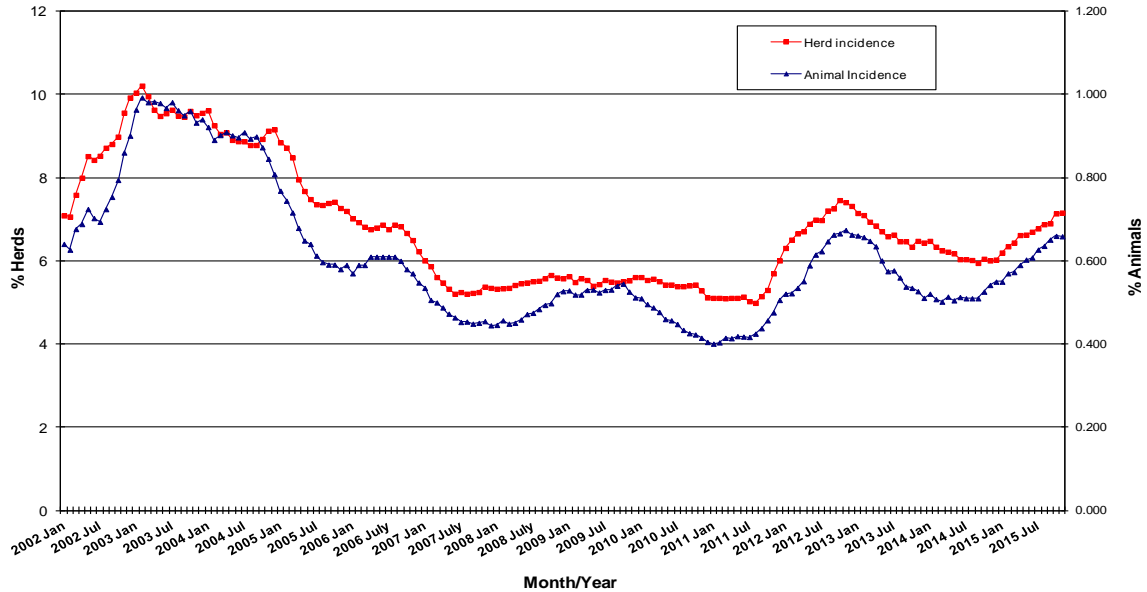
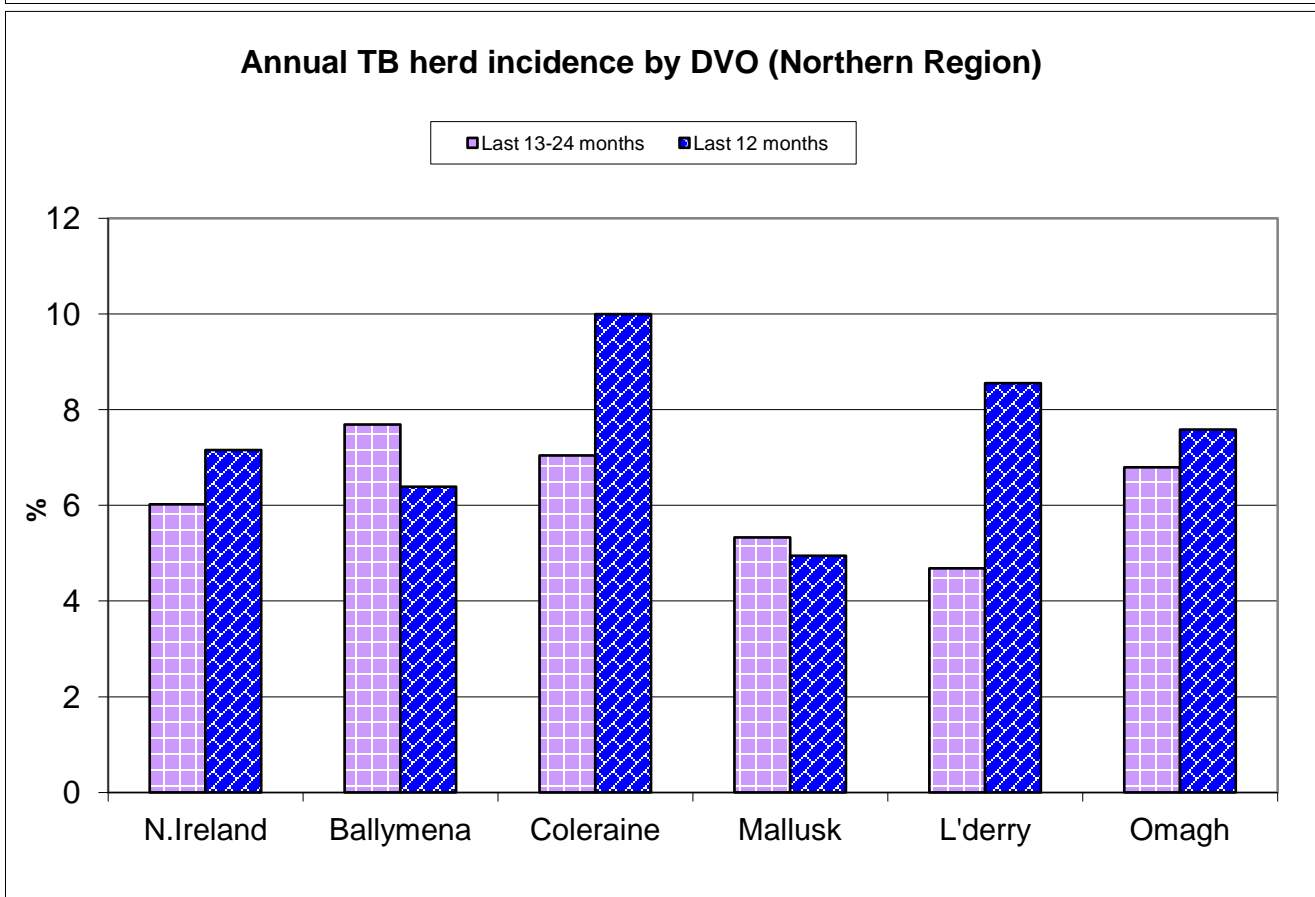
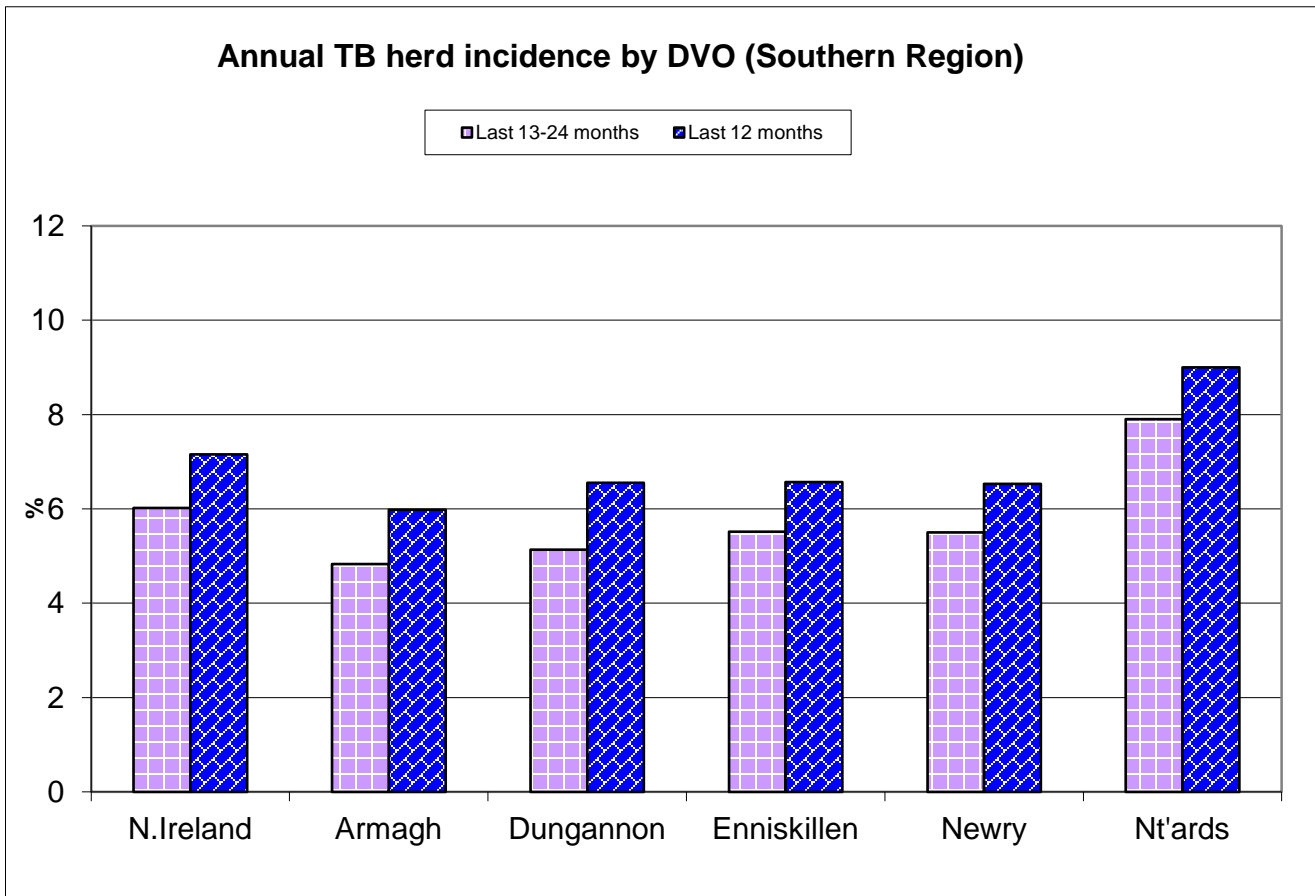


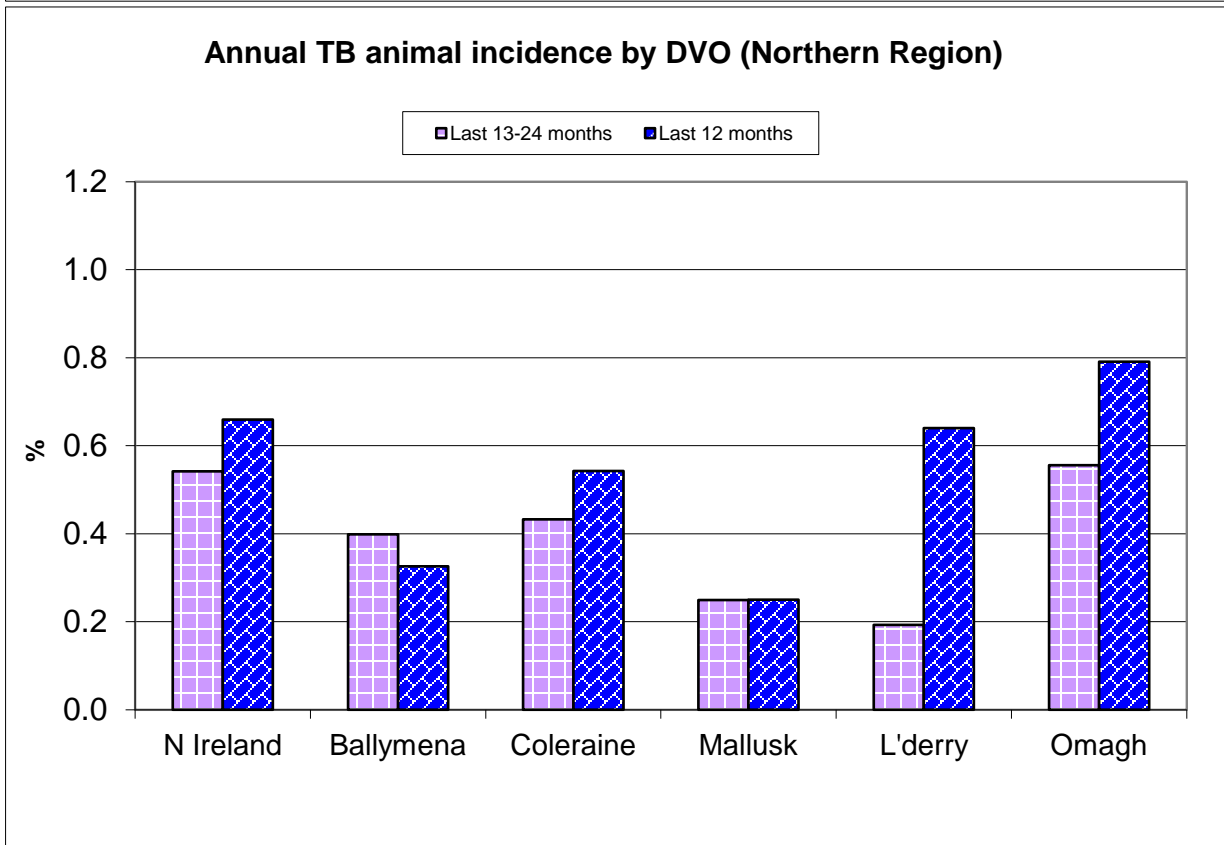
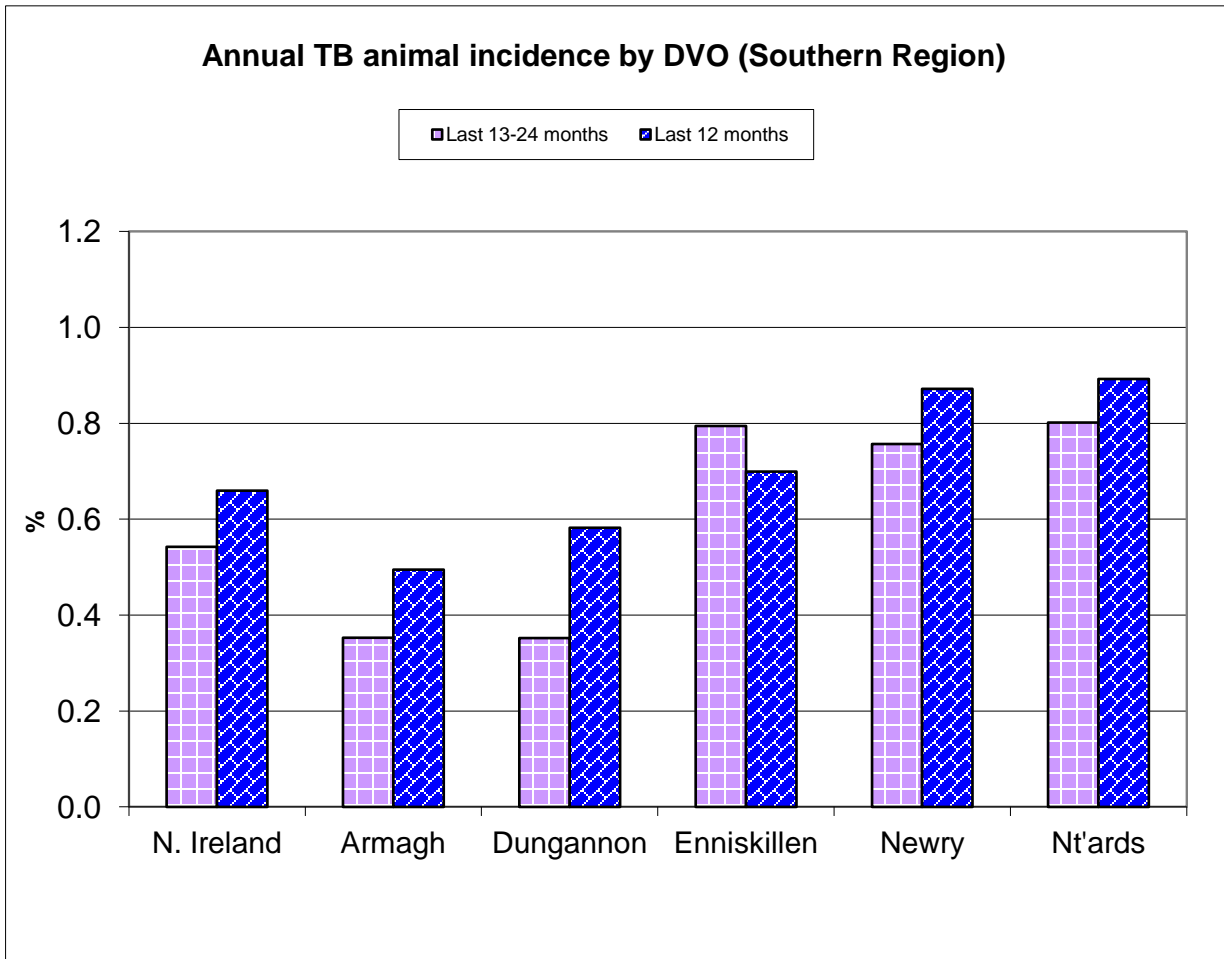
**Tuberculosis: Statistics for November 2015**

<b>Tests Completed</b>	Herds	<a href="#">Number of herds tested (any test), by DVO</a>	<a href="#">Cumulative Statistics</a>	
		<a href="#">Number of herds with herd-level test, by DVO</a>	<a href="#">Cumulative Statistics</a>	
		<a href="#">Number of herds with any risk test, by DVO</a>		
		<a href="#">Number of herds with herd-level risk test, by DVO</a>		
		<a href="#">Number of herds with herd-level restricted test, by DVO</a>		
	Animals	<a href="#">Total number of tests performed, by DVO</a>	<a href="#">Cumulative Statistics</a>	
		<a href="#">Total number of animals tests, by DVO</a>	<a href="#">Cumulative Statistics</a>	
		<a href="#">Total number of restricted herd tests, by DVO</a>	<a href="#">Number of animals tested</a>	
		<a href="#">Total number of herd tests, by DVO</a>	<a href="#">Number of animals tested</a>	
		<a href="#">Total number of individual tests, by DVO</a>	<a href="#">Number of animals tested</a>	
<a href="#">Total number of animals tested, by DVO</a>				
<b>Summary Statistics</b>	<a href="#">Herds with TB reactors during month, by DVO</a>	<a href="#">Cumulative Statistics</a>	<a href="#">APT</a>	
	<a href="#">Number of new reactor herds, by DVO</a>	<a href="#">Cumulative Statistics</a>	<a href="#">Negative-in-contacts</a>	
	<a href="#">Number of new reactor animals, by DVO</a>		<a href="#">Reactor removal times</a>	
	<a href="#">Herd Prevalance</a>			
	<a href="#">Herd Incidence</a>			
	<a href="#">Animal Incidence</a>			
	<a href="#">Number of reactor animals by month and by DVO</a>			
	<a href="#">Number of new reactor herds by month and by DVO</a>			
	<a href="#">Total number of all reactor herds by DVO</a>			
<b>Summary Charts</b>	<a href="#">Current Animal Incidence Chart</a>	<a href="#">Monthly TB reactors chart</a>	<a href="#">Yearly Confirmed Herd Prevalence</a>	
	<a href="#">Yearly Animal Incidence Chart</a>	<a href="#">New TB reactor herds</a>	<a href="#">Current Confirmed Herd Prevalence</a>	
	<a href="#">Current Herd Incidence Chart</a>	<a href="#">TB Herd &amp; Animal Incidence</a>		
	<a href="#">Yearly Herd Incidence Chart</a>			

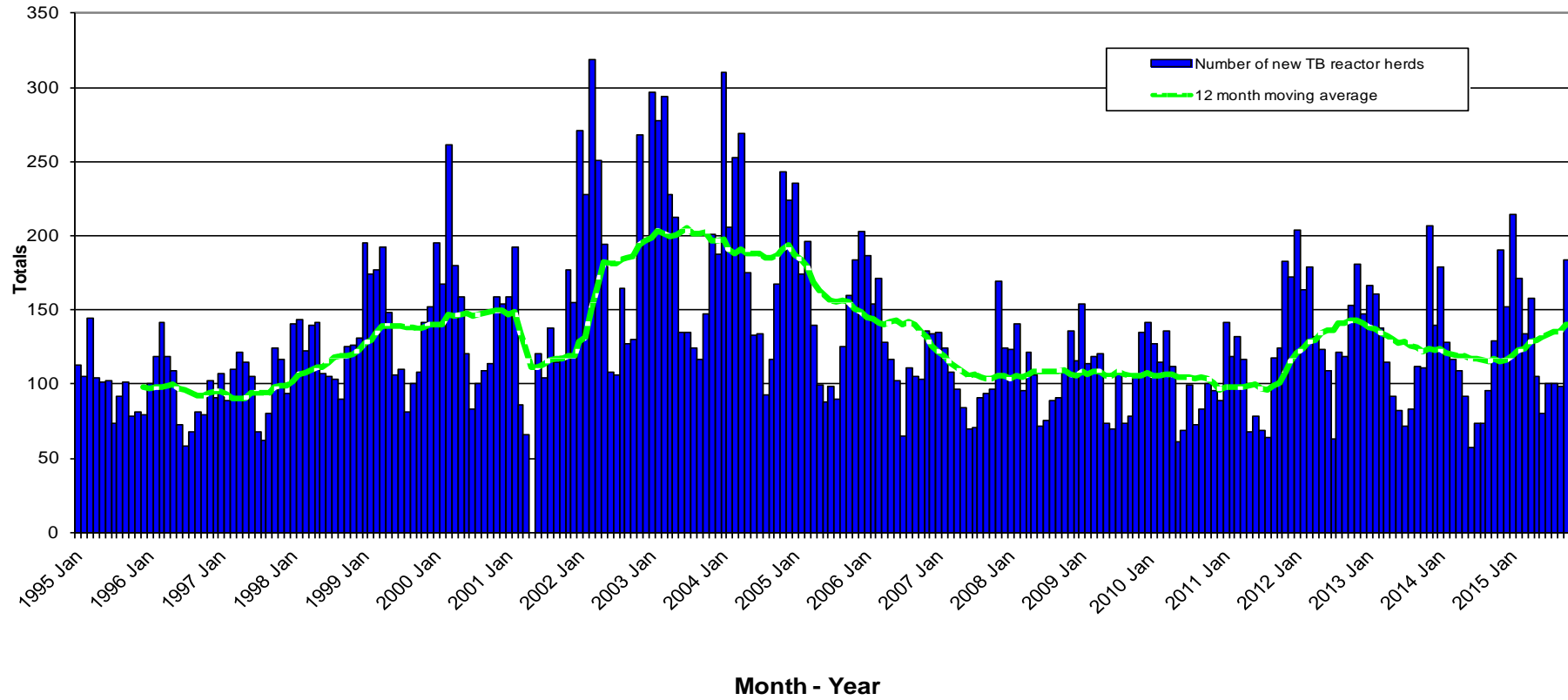
**TB Herd and Animal Incidence:**  
 (12 month moving average: January 2002 to November 2015)



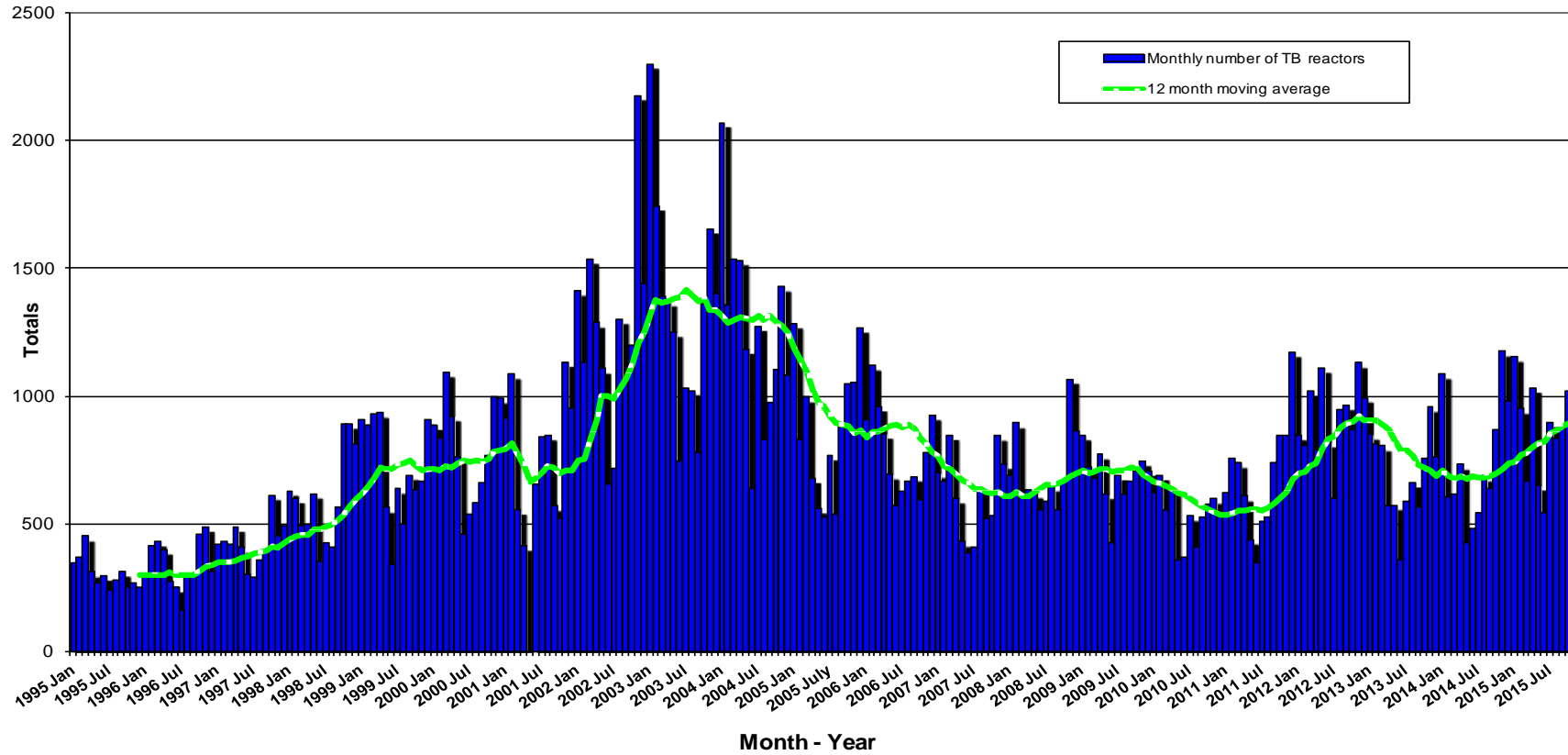


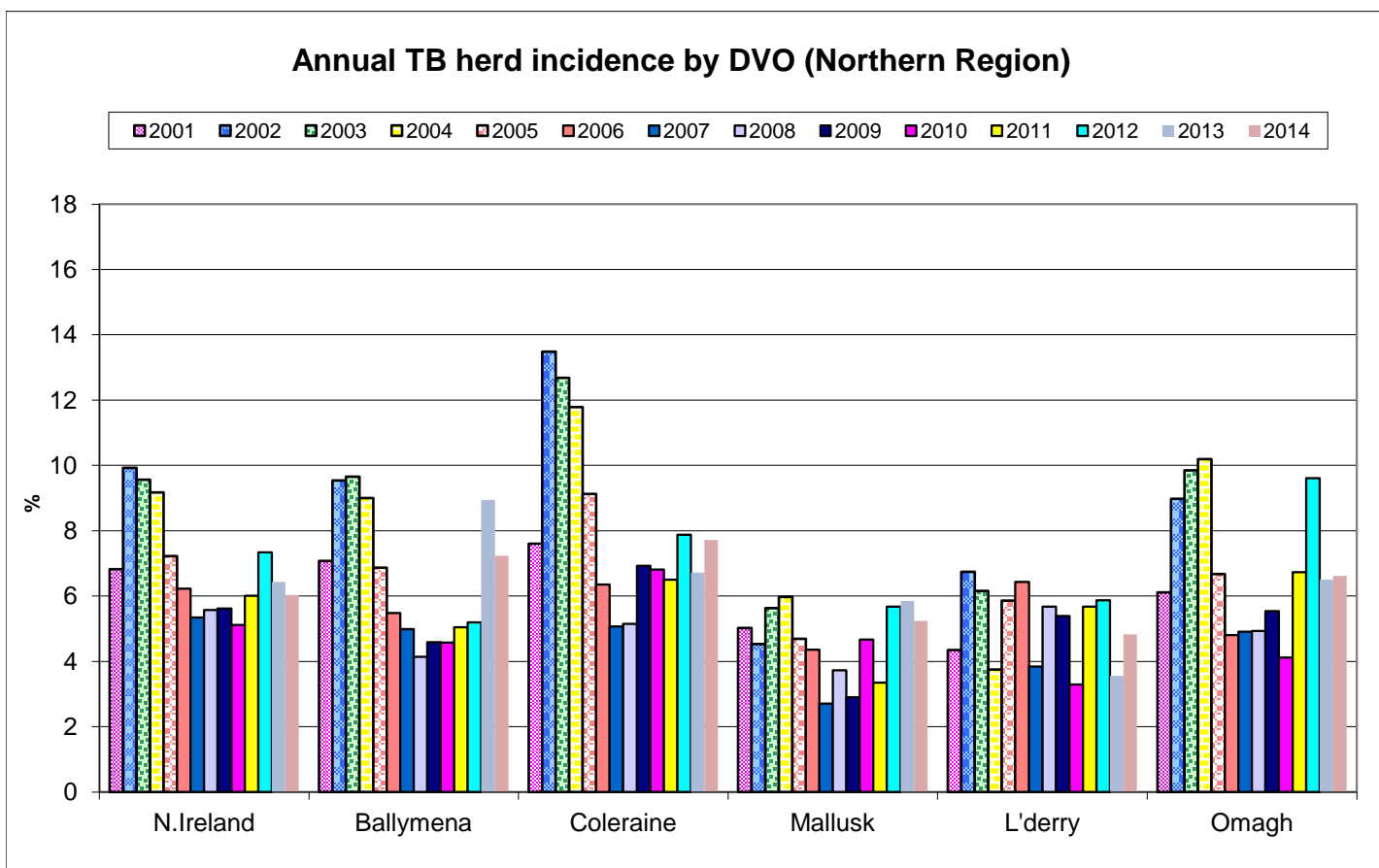
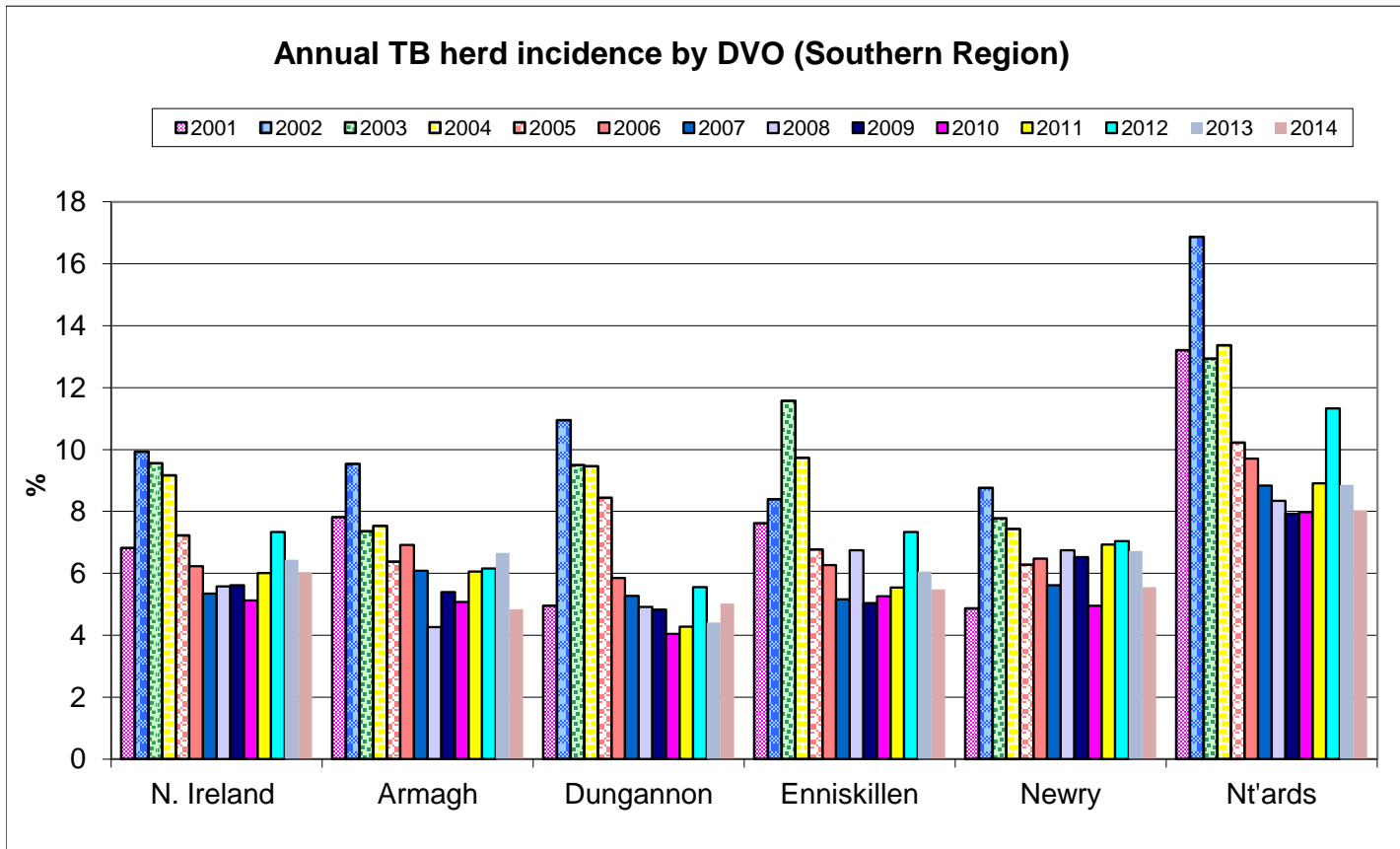


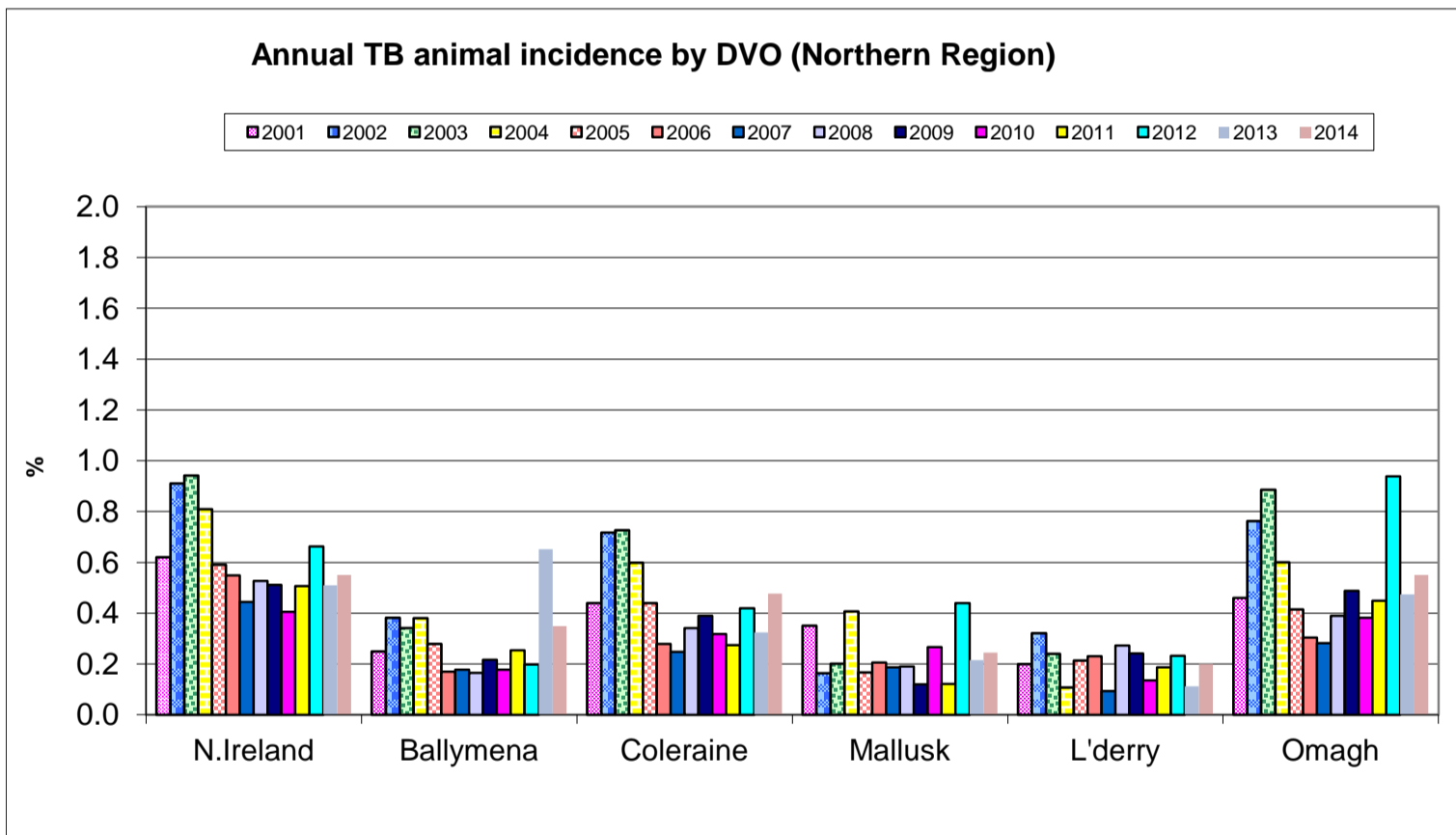
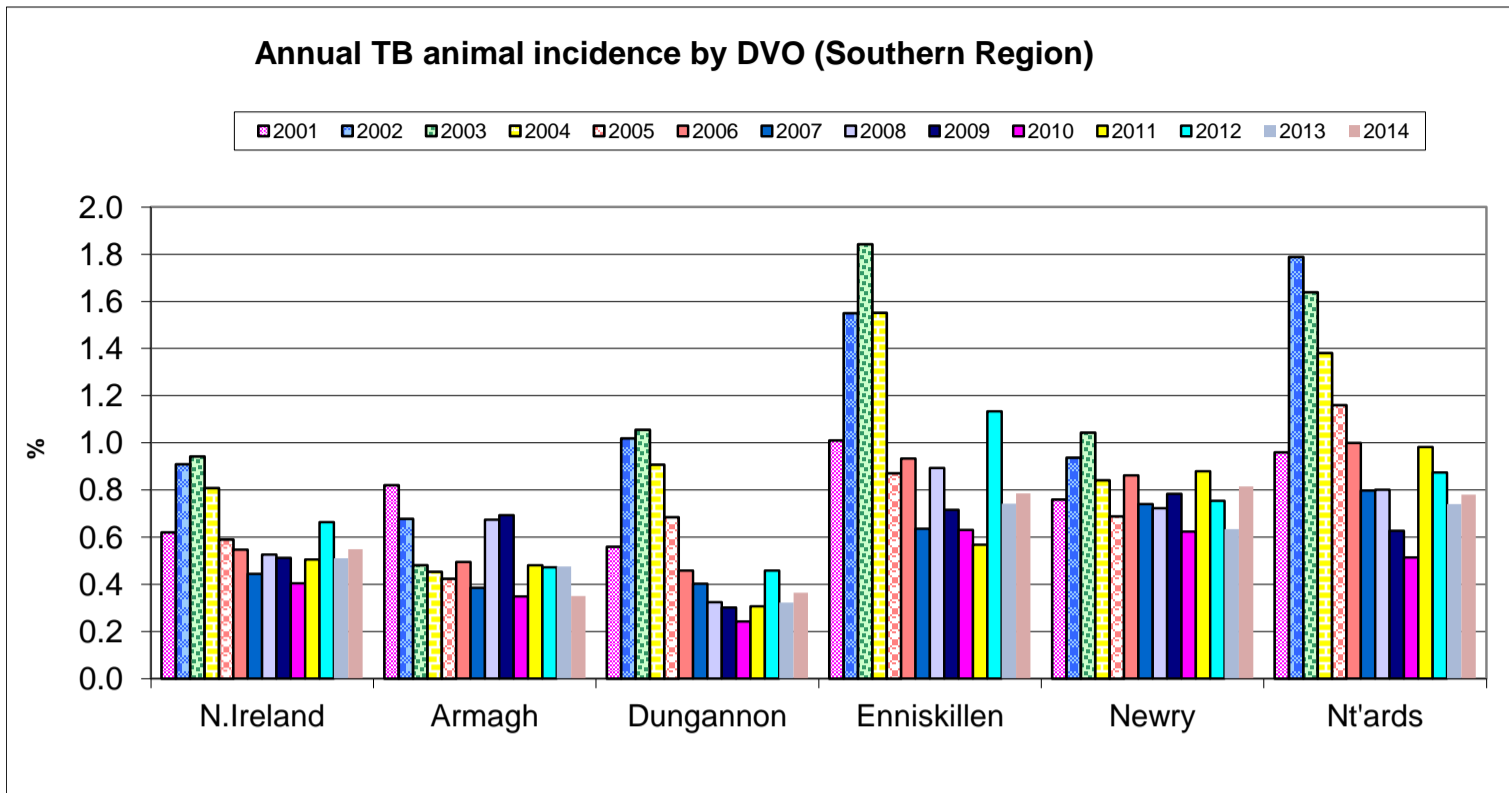
New TB Reactor Herds: January 1995 to November 2015



TB Reactors: January 1995 to November 2015

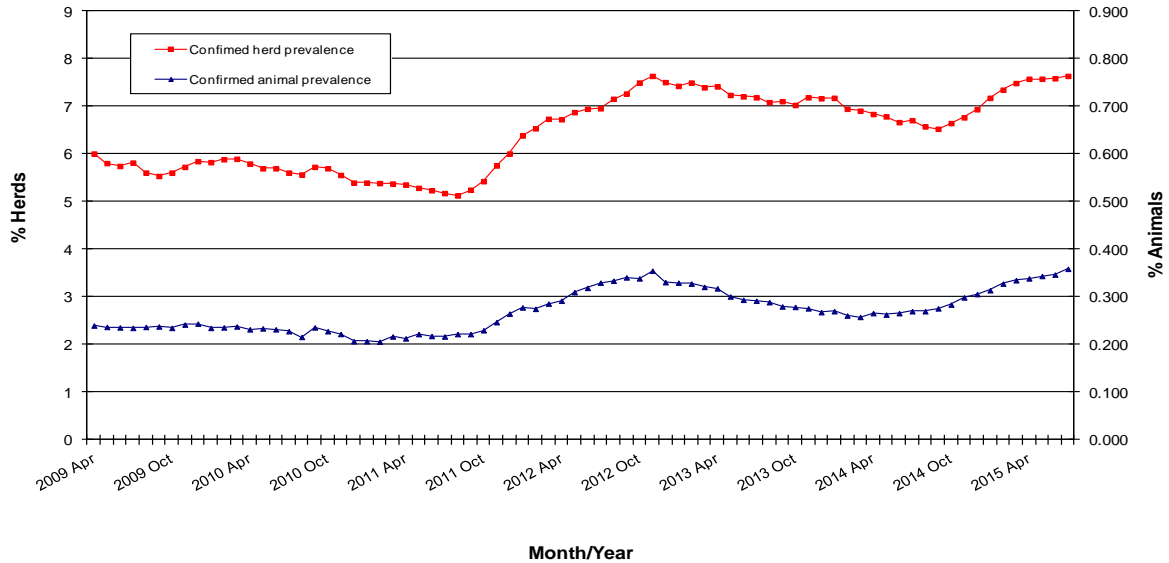


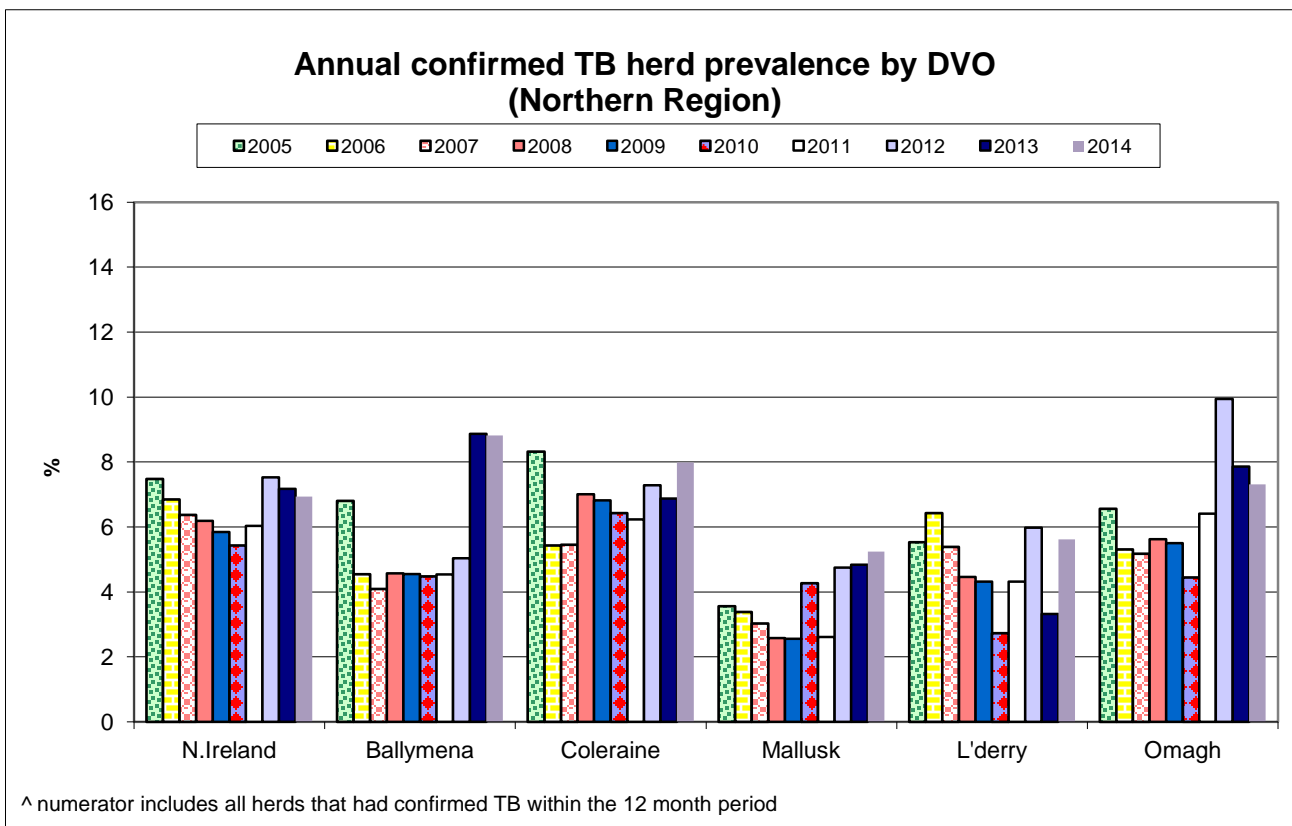
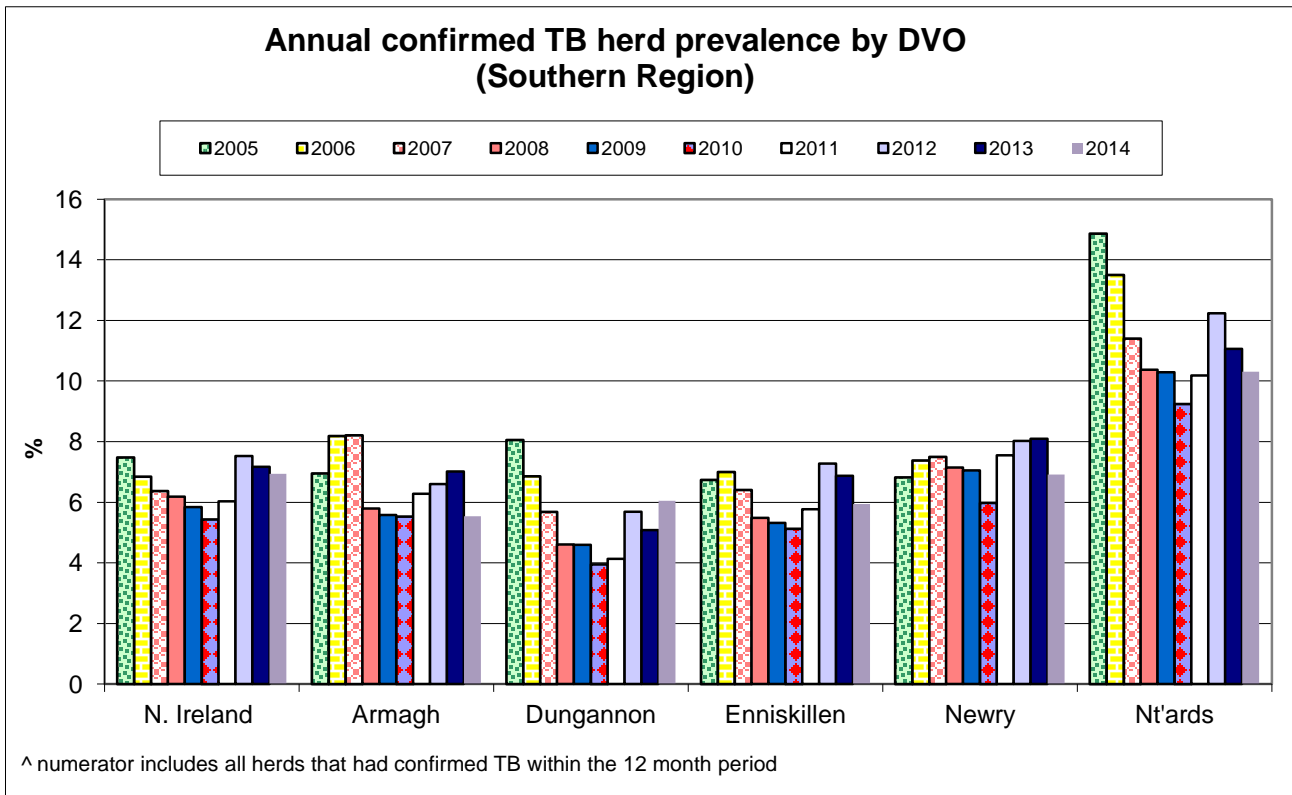


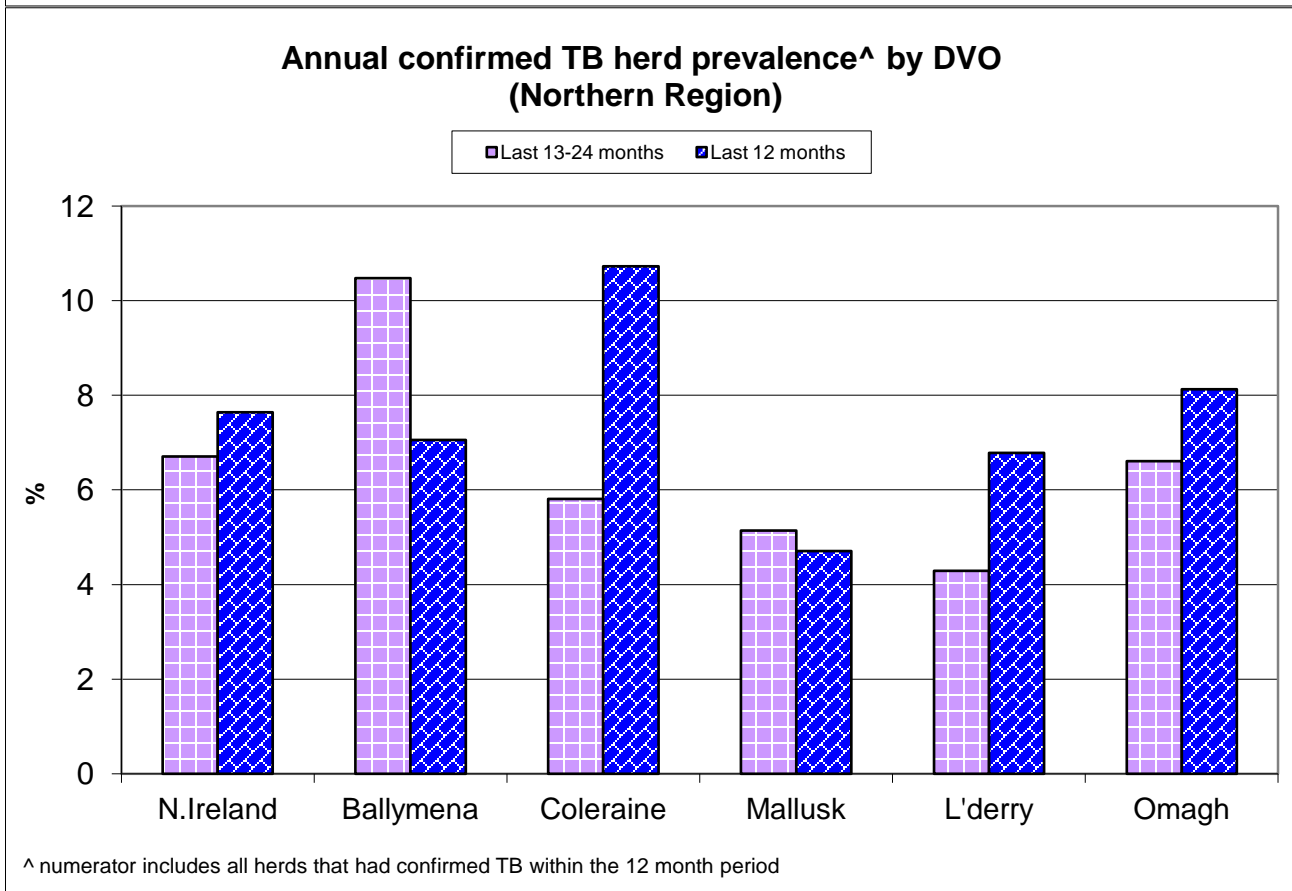
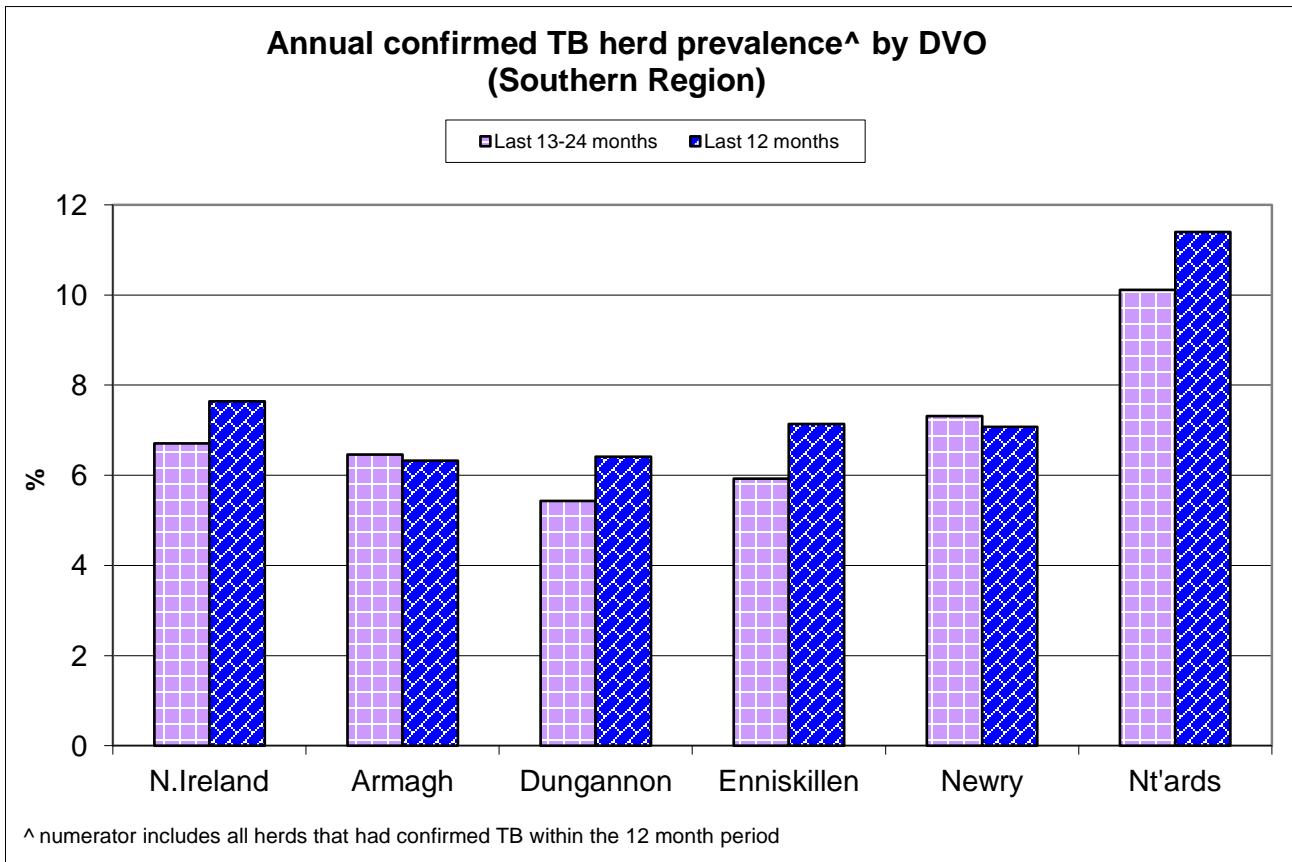




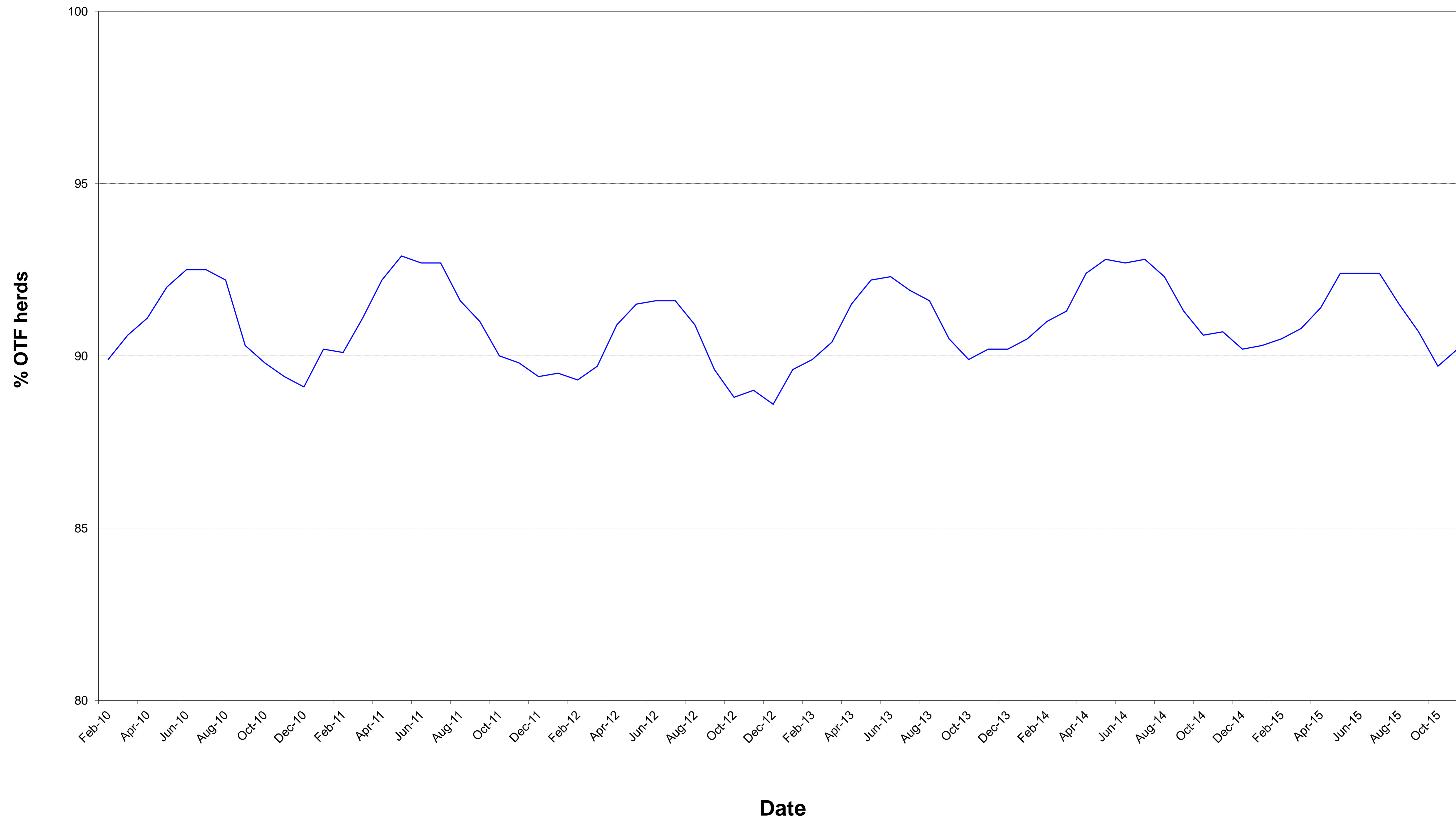
**TB Confirmed Herd^ and Animal Prevalence:  
(12 month moving average: April 2009 to July 2015)**







### % operational herds that are officially tuberculosis free (OTF herds)



**Month = November 2015**

Ref.	Total	Armagh	Ballymena	Coleraine	Dungannon	Enniskillen	Mallusk	L'derry	Newry	Nt'ards	Omagh	
d1	<b>No. of herds with TB reactors during month</b>	<b>295</b>	<b>21</b>	<b>13</b>	<b>47</b>	<b>40</b>	<b>31</b>	<b>19</b>	<b>7</b>	<b>35</b>	<b>33</b>	<b>49</b>
d2	<b>No. of new reactor herds during month</b>	<b>185</b>	<b>15</b>	<b>7</b>	<b>29</b>	<b>24</b>	<b>22</b>	<b>15</b>	<b>5</b>	<b>20</b>	<b>15</b>	<b>33</b>
d3	No. of new reactor herds since start of year	1529	129	78	224	175	190	73	66	226	159	209
d4	No. of new reactor herds in the previous 12 months	1681	138	90	257	187	204	82	74	244	174	231
d26	No. of new reactor herds in the previous 13-24 months	1385	109	107	177	144	167	86	41	200	149	205
d5	<b>No. of TB reactor animals during month</b>	<b>1245</b>	<b>110</b>	<b>24</b>	<b>120</b>	<b>137</b>	<b>123</b>	<b>66</b>	<b>30</b>	<b>175</b>	<b>245</b>	<b>215</b>
d6	No. of TB reactor animals since start of year	9867	785	344	1050	1065	1075	342	399	1722	1524	1561
d7	No. of reactor animals in the previous 12 months	10849	855	383	1234	1156	1181	358	422	1971	1612	1677
d27	No. of reactor animals in the previous 13-24 months	8616	588	464	911	667	1277	354	117	1690	1418	1130
d20	<b>Cumulative herd incidence in year (%)</b>	<b>6.92</b>	5.88	5.99	9.28	6.53	6.46	4.93	8.28	6.32	8.56	7.29
d9	<b>Annual herd incidence over the last 12 months (%)</b>	<b>7.16</b>	5.98	6.39	9.99	6.55	6.57	4.95	8.55	6.53	9.00	7.58
d28	<b>Annual herd incidence over the last 13-24 months (%)</b>	<b>6.02</b>	4.83	7.69	7.05	5.14	5.52	5.33	4.69	5.50	7.90	6.79
d30	<b>2014 Herd Incidence (%)</b>	<b>6.03</b>	4.84	7.24	7.71	5.02	5.48	5.24	4.83	5.55	8.03	6.62
d16	<b>2013 Herd Incidence (%)</b>	<b>6.44</b>	6.66	8.94	6.72	4.41	6.06	5.85	3.55	6.72	8.86	6.51
d10	<b>2012 Herd Incidence (%)</b>	<b>7.34</b>	6.15	5.19	7.88	5.55	7.34	5.67	5.87	7.04	11.33	9.61
d11	<b>2011 Herd Incidence (%)</b>	<b>6.00</b>	6.05	5.05	6.51	4.28	5.54	3.35	5.68	6.92	8.91	6.73
d38	<b>2010 Herd Incidence (%)</b>	<b>5.12</b>	5.07	4.58	6.81	4.04	5.25	4.67	3.29	4.95	7.98	4.12
d21	<b>Cumulative animal incidence in year (%)</b>	<b>0.642</b>	0.484	0.318	0.498	0.586	0.674	0.271	0.659	0.800	0.887	0.794
d12	<b>Annual animal incidence over the last 12 months (%)</b>	<b>0.659</b>	0.495	0.326	0.542	0.582	0.699	0.250	0.640	0.872	0.892	0.791
d29	<b>Annual animal incidence over the last 13-24 months (%)</b>	<b>0.542</b>	0.353	0.398	0.433	0.352	0.795	0.249	0.193	0.757	0.802	0.555
d31	<b>2014 Animal Incidence (%)</b>	<b>0.550</b>	0.350	0.349	0.476	0.364	0.786	0.244	0.199	0.815	0.781	0.551
d15	<b>2013 Animal Incidence (%)</b>	<b>0.510</b>	0.476	0.652	0.324	0.323	0.742	0.214	0.112	0.634	0.741	0.474
d13	<b>2012 Animal Incidence (%)</b>	<b>0.663</b>	0.473	0.198	0.419	0.459	1.133	0.439	0.232	0.754	0.875	0.938
d14	<b>2011 Animal Incidence (%)</b>	<b>0.506</b>	0.481	0.254	0.274	0.307	0.567	0.122	0.187	0.880	0.982	0.449

d39	<b>2010 Animal Incidence (%)</b>	<b>0.404</b>	0.348	0.178	0.318	0.243	0.630	0.266	0.136	0.624	0.514	0.381
d34	<b>APT during current month</b>	<b>4.10</b>	4.31	1.08	2.80	3.96	4.53	2.34	2.01	5.08	7.15	5.43
d22	<b>APT since start of year</b>	<b>4.05</b>	3.33	2.17	2.93	4.23	4.36	2.01	4.63	5.21	5.21	5.11
d17	<b>Current 12 month moving average APT</b>	<b>4.03</b>	3.34	2.18	3.10	4.12	4.34	1.82	4.44	5.44	5.10	4.97
d32	<b>2014 APT</b>	<b>3.55</b>	2.39	2.18	3.24	2.78	5.24	1.79	1.58	5.08	4.64	3.65
d18	<b>2013 APT</b>	<b>3.27</b>	3.14	4.53	2.20	2.42	4.90	1.64	0.86	3.87	4.33	3.05
d19	<b>2012 APT</b>	<b>4.21</b>	3.17	1.52	2.90	3.37	7.17	3.37	1.68	4.57	4.92	5.67
d42	<b>2011 APT</b>	<b>3.40</b>	3.27	2.00	1.93	2.35	3.98	0.98	1.45	5.24	5.86	3.25
d40	<b>2010 APT</b>	<b>2.74</b>	2.38	1.36	2.24	1.86	4.31	2.12	1.03	3.71	3.28	2.85
d23	<b>No. negative in contacts since start of year</b>	<b>683</b>	58	10	21	61	34	45	1	19	95	339
d46	<b>No. negative in contacts over last 12 months</b>	<b>720</b>	83	10	25	67	34	45	1	19	97	339
d33	<b>No. negative in contacts during 2014</b>	<b>1060</b>	40	10	100	227	93	29	9	201	35	316
d24	<b>No. negative in contacts during 2013</b>	<b>565</b>	44	74	3	18	83	22	0	49	35	237
d25	<b>No. negative in contacts during 2012</b>	<b>1394</b>	9	0	23	35	79	611	1	133	55	448
d43	<b>No. negative in contacts during 2011</b>	<b>484</b>	12	1	13	19	19	40	0	144	179	57
d41	<b>No. negative in contacts during 2010</b>	<b>740</b>	42	29	13	5	157	117	2	73	61	241
d37	<b>Reactor removal time 2015</b>	<b>9.6</b>	9.6	9.6	8.9	8.9	8.9	9.6	8.2	10.3	9.6	8.2
d45	<b>Reactor removal time 2014</b>	<b>8.9</b>	9.6	8.9	8.9	8.9	8.9	8.9	8.2	10.3	8.9	8.2
d35	<b>Reactor removal time 2013</b>	<b>8.9</b>	9.6	8.9	8.2	9.6	8.9	9.6	8.9	9.6	9.6	8.2
d47	<b>Reactor removal time 2012</b>	<b>11.6</b>	12.3	12.3	9.6	12.3	10.3	10.3	8.9	11.6	11.6	8.9
D44	<b>Reactor removal time 2011</b>	<b>9.6</b>	13.0	8.2	8.9	8.9	10.3	11.6	8.2	11.6	8.9	8.2
d36	<b>Reactor removal time 2010</b>	<b>11.6</b>	13.7	8.2	8.9	9.6	11.0	8.9	8.2	12.3	12.3	8.9

### **Tuberculosis: number of reactor herds by month and by DVO in 2015 and unique herd breakdowns during the year**

2015		DVO_CODE										
Year	Month	Armagh	Ballymena	Coleraine	Dungannon	Enniskillen	Mallusk	L'Derry	Newry	Nt'Ards	Omagh	Total
2015	1	18	17	36	25	19	13	8	21	21	36	214
2015	2	8	15	31	13	19	8	4	22	23	28	171
2015	3	14	6	24	12	18	6	2	24	12	16	134
2015	4	16	9	22	18	26	5	5	23	17	17	158
2015	5	9	3	13	10	20	6	5	16	10	13	105
2015	6	8	2	9	12	15	5	4	7	10	8	80
2015	7	8	2	10	10	12	3	11	25	12	7	100
2015	8	8	7	12	8	10	4	3	26	17	5	100
2015	9	6	4	12	20	12	3	8	13	9	11	98
2015	10	19	6	26	23	17	5	11	29	13	35	184
2015	11	15	7	29	24	22	15	5	20	15	33	185
2015	12											0
Total		129	78	224	175	190	73	66	226	159	209	1529

Unique Herd Breakdowns		DVO_CODE										
Year	Armagh	Ballymena	Coleraine	Dungannon	Enniskillen	L'Derry	Mallusk	Newry	Nt'Ards	Omagh	Total Herds	
2015	162	95	297	221	233	75	86	288	210	263	1930	

### **Tuberculosis: number of reactor herds by month and by DVO in 2014 and unique herd breakdowns during the year**

2014		DVO_CODE										
Year	Month	Armagh	Ballymena	Coleraine	Dungannon	Enniskillen	Mallusk	L'Derry	Newry	Nt'Ards	Omagh	Total
2014	1	9	20	22	13	18	22	9	24	13	29	179
2014	2	16	19	18	8	13	10	4	22	11	7	128
2014	3	10	12	12	14	11	7	3	19	14	15	117
2014	4	8	4	12	11	15	8	3	16	15	17	109
2014	5	6	9	5	13	14	3	2	13	15	12	92
2014	6	8	2	6	7	13	2	1	11	2	5	57
2014	7	7	2	4	8	5	5	2	18	10	13	74
2014	8	9	3	8	11	12	1	1	12	9	8	74
2014	9	8	2	17	14	11	5	0	13	13	13	96
2014	10	11	6	20	12	14	5	4	15	13	29	129
2014	11	9	10	35	19	27	8	6	22	22	32	190
2014	12	9	12	33	12	14	9	8	18	15	22	152
Total		110	101	192	142	167	85	43	203	152	202	1397

Unique Herd Breakdowns		DVO_CODE										
Year	Armagh	Ballymena	Coleraine	Dungannon	Enniskillen	Mallusk	L'Derry	Newry	Nt'Ards	Omagh	Total Herds	
2014	136	136	229	181	212	103	51	274	201	246	1769	

### **Tuberculosis: number of reactor herds by month and by DVO in 2013 and unique herd breakdowns during the year**

2013		DVO_CODE										
Year	Month	Armagh	Ballymena	Coleraine	Dungannon	Enniskillen	Mallusk	L'Derry	Newry	Nt'Ards	Omagh	Total
2013	1	13	20	20	16	24	17	7	12	16	21	166
2013	2	13	4	24	16	18	19	4	17	18	28	161
2013	3	17	12	17	12	13	14	5	16	10	22	138
2013	4	15	6	11	14	15	5	2	20	17	10	115
2013	5	4	3	13	7	16	6	2	26	7	8	92
2013	6	13	5	7	2	10	1	1	24	7	12	82
2013	7	6	4	4	4	9	3	0	14	14	14	72
2013	8	11	4	7	3	10	0	0	20	19	9	83
2013	9	16	14	8	13	19	2	0	23	9	8	112
2013	10	15	6	10	10	15	2	0	22	14	17	111
2013	11	18	25	31	14	22	14	4	34	22	23	207
2013	12	8	18	18	14	14	10	6	15	12	25	140
Total		149	121	170	125	185	93	31	243	165	197	1479

Unique Herd Breakdowns		DVO_CODE										
Year	Armagh	Ballymena	Coleraine	Dungannon	Enniskillen	Mallusk	L'Derry	Newry	Nt'Ards	Omagh	Total Herds	
2013	184	139	212	172	255	106	35	324	213	259	1899	

**A herd is defined as being a TB reactor herd if it had at least one TB reactor animal in that month and no TB reactor animals during the previous 12 months.**

**A TB unique herd breakdown is defined as a herd which has had at least one TB reactor during the specified calendar year irrespective of any TB reactors during the previous calendar year.**

**Tuberculosis: number of reactor animals by month and by DVO 2015**

2015		DVO_CODE										
Year	Month	Armagh	Ballymena	Coleraine	Dungannon	Enniskillen	L'Derry	Mallusk	Newry	Nt'Ards	Omagh	Total
2015	1	85	78	130	98	129	22	33	125	209	245	1154
2015	2	45	80	116	45	87	29	44	198	132	175	951
2015	3	46	19	120	52	64	7	49	108	59	142	666
2015	4	71	28	83	215	126	39	14	223	141	94	1034
2015	5	51	12	46	45	94	42	33	93	84	150	650
2015	6	94	9	30	40	75	22	10	152	59	51	542
2015	7	19	27	75	170	68	78	40	182	115	124	898
2015	8	150	18	86	52	75	10	10	184	219	29	833
2015	9	22	25	112	91	133	66	32	111	117	165	874
2015	10	92	24	132	120	101	54	11	171	144	171	1020
2015	11	110	24	120	137	123	30	66	175	245	215	1245
2015	12											0
Total		785	344	1050	1065	1075	399	342	1722	1524	1561	9867

**Tuberculosis: number of reactor animals by month and by DVO 2014**

2014		DVO_CODE										
Year	Month	Armagh	Ballymena	Coleraine	Dungannon	Enniskillen	Mallusk	L'Derry	Newry	Nt'Ards	Omagh	Total
2014	1	53	91	62	42	121	65	25	253	212	162	1086
2014	2	38	56	62	37	66	29	9	157	82	68	604
2014	3	33	51	29	77	106	17	10	114	86	91	614
2014	4	36	10	62	38	144	36	9	132	187	78	732
2014	5	18	23	35	48	70	8	6	114	69	34	425
2014	6	49	44	64	22	94	10	2	74	61	60	480
2014	7	51	17	19	44	66	12	6	157	104	70	546
2014	8	72	11	54	65	131	2	5	152	120	75	687
2014	9	29	10	99	43	119	39	1	95	117	84	636
2014	10	81	12	159	43	77	73	28	122	85	191	871
2014	11	54	45	193	147	181	38	6	220	179	112	1175
2014	12	70	39	184	91	106	23	16	249	88	116	982
Total		584	409	1022	697	1281	352	123	1839	1390	1141	8838

**Tuberculosis: number of reactor animals by month and by DVO 2013**

2013		DVO_CODE										
Year	Month	Armagh	Ballymena	Coleraine	Dungannon	Enniskillen	Mallusk	L'Derry	Newry	Nt'Ards	Omagh	Total
2013	1	61	69	83	84	122	59	9	143	98	122	850
2013	2	84	23	107	102	136	60	5	108	102	87	814
2013	3	80	54	90	78	137	39	11	156	72	88	805
2013	4	81	9	44	83	74	18	11	120	79	51	570
2013	5	45	26	34	28	131	15	5	87	126	77	574
2013	6	29	17	24	19	26	1	3	88	108	44	359
2013	7	87	51	29	31	97	9	2	83	125	76	590
2013	8	46	62	29	23	97	8	2	152	168	76	663
2013	9	49	97	27	33	96	17	0	126	61	58	564
2013	10	114	35	59	54	76	6	5	101	199	107	756
2013	11	71	207	95	40	140	45	7	159	86	107	957
2013	12	74	94	73	61	102	25	10	100	116	105	760
Total		821	744	694	636	1234	302	70	1423	1340	998	8262

**A TB reactor animal is defined as an animal where the manual interpretation field for a skin test is positive ('P') with the first test date being taken as the time at which the animal became a reactor. Animals with lesions at routine slaughter ('LRS') are not taken into account.**



**Month = November 2015**

Ref.		<b>Total</b>	<b>Armagh</b>	<b>Ballymena</b>	<b>Coleraine</b>	<b>Dungannon</b>	<b>Enniskillen</b>	<b>Mallusk</b>	<b>L'derry</b>	<b>Newry</b>	<b>Nt'ards</b>	<b>Omagh</b>
b16	<b>No. herds with any test completed in month</b>	<b>4051</b>	<b>394</b>	<b>240</b>	<b>475</b>	<b>482</b>	<b>486</b>	<b>333</b>	<b>173</b>	<b>542</b>	<b>363</b>	<b>563</b>
b17	No. herds with any test, from start of year	22459	2244	1330	2460	2731	2970	1522	811	3608	1874	2909
b29	All herds with any test, from start of year	23075	2285	1360	2540	2823	3028	1568	853	3710	1898	3010
b18	No. herds with any test, from start of year (no cattle)	616	41	30	80	92	58	46	42	102	24	101
b19	<b>No. herds with herd test completed in month</b>	<b>3553</b>	<b>321</b>	<b>212</b>	<b>410</b>	<b>413</b>	<b>439</b>	<b>296</b>	<b>157</b>	<b>474</b>	<b>327</b>	<b>504</b>
b20	No. herds with herd test, from start of year	22109	2194	1303	2415	2680	2940	1481	797	3577	1857	2865
b30	All herds with herd test, from start of year	22744	2239	1333	2497	2774	2999	1527	840	3682	1881	2972
b21	No. herds with herd test, from start of year (no cattle)	635	45	30	82	94	59	46	43	105	24	107
b22	No. herds with herd test during last 12 months	23487	2308	1409	2572	2854	3106	1657	865	3735	1934	3047
b31	No. herds with herd test during last 13-24 months	23019	2257	1392	2512	2803	3028	1613	875	3636	1885	3018
b32	No. herds with herd test during 2014	23149	2274	1395	2490	2829	3049	1621	890	3658	1892	3051
b28	No. herds with herd test during 2013	22979	2237	1353	2530	2833	3054	1590	873	3618	1863	3028
b23	No. herds with herd test during 2012	23093	2244	1369	2513	2831	3067	1623	869	3638	1880	3059
b24	No. herds with herd test during 2011	23085	2197	1387	2567	2807	3068	1644	881	3668	1807	3059
b39	No. herds with herd test during 2010	22666	2169	1377	2496	2797	2969	1627	851	3599	1793	2988
b25	<b>No. herds with any risk test completed</b>	<b>10523</b>	<b>1137</b>	<b>624</b>	<b>1257</b>	<b>1146</b>	<b>1486</b>	<b>583</b>	<b>301</b>	<b>1652</b>	<b>1014</b>	<b>1323</b>
b26	<b>No. herds with herd risk test completed</b>	<b>7708</b>	<b>741</b>	<b>461</b>	<b>936</b>	<b>745</b>	<b>1257</b>	<b>345</b>	<b>196</b>	<b>1222</b>	<b>797</b>	<b>1008</b>
b27	<b>No. herds with restricted herd test completed</b>	<b>2918</b>	<b>268</b>	<b>157</b>	<b>424</b>	<b>305</b>	<b>332</b>	<b>171</b>	<b>97</b>	<b>444</b>	<b>340</b>	<b>380</b>

**Month = November 2015**

Ref	Total	Armagh	Ballymena	Coleraine	Dungannon	Enniskillen	Mallusk	L'derry	Newry	Nt'ards	Omagh	
c1	<b>Total number of tests in current month</b>	<b>4545</b>	<b>471</b>	<b>263</b>	<b>537</b>	<b>567</b>	<b>379</b>	<b>191</b>	<b>594</b>	<b>405</b>	<b>616</b>	
c2	Total number of tests from start of year	41398	4434	2340	4805	5060	5272	2671	1410	6412	3749	5245
c3	No. tests during the same time period in the previous year	38690	4203	2409	4035	4623	4759	2626	1276	6281	3526	4952
c4	% change between years	6.5	5.2	-2.9	16.0	8.6	9.7	1.7	9.5	2.0	5.9	5.6
c5	No. tests in the previous 12 months	45378	4842	2575	5311	5562	5735	3017	1566	6944	4036	5790
c6	<b>No. animal tests in current month</b>	<b>303819</b>	<b>25541</b>	<b>22152</b>	<b>42847</b>	<b>34619</b>	<b>27180</b>	<b>28228</b>	<b>14930</b>	<b>34443</b>	<b>34284</b>	<b>39595</b>
c7	No. animal tests from start of year	2435620	235921	158886	358097	251599	246809	169769	86238	330612	292394	305295
c8	No. animal tests during the same time period in the previous year	2235956	223971	170664	275620	221864	218674	170094	68809	330626	275747	279887
c9	% change between years	8.2	5.1	-7.4	23.0	11.8	11.4	-0.2	20.2	0.0	5.7	8.3
c10	No. animal tests in previous 12 months	2689941	255892	176049	397665	280766	272009	196449	95103	362031	316266	337711
c11	No. cattle eligible for TB testing	26116	2582	1556	2854	3158	3362	1868	1014	4147	2147	3428
c12	No. cattle herds eligible for TB testing	1571957	154148	110624	207989	177853	153728	135583	61650	208206	164412	197764
c13	<b>No. restricted herd tests during month</b>	<b>489</b>	<b>40</b>	<b>29</b>	<b>74</b>	<b>55</b>	<b>38</b>	<b>28</b>	<b>24</b>	<b>91</b>	<b>63</b>	<b>47</b>
c14	No. animals tested	83447	7123	6512	13609	10439	3995	5631	4301	12103	11584	8150
c15	<b>No. herd tests during month</b>	<b>3555</b>	<b>321</b>	<b>212</b>	<b>410</b>	<b>413</b>	<b>439</b>	<b>296</b>	<b>157</b>	<b>475</b>	<b>328</b>	<b>504</b>
c16	No. animals tested	300988	25129	22063	42498	34187	26632	28024	14851	34159	34100	39345
c17	<b>No. individual tests during month</b>	<b>990</b>	<b>150</b>	<b>51</b>	<b>127</b>	<b>154</b>	<b>83</b>	<b>83</b>	<b>34</b>	<b>119</b>	<b>77</b>	<b>112</b>
c18	No. animals tested	2831	412	89	349	432	548	204	79	284	184	250
c23	<b>No. animals TB tested since start of year</b>	<b>1535930</b>	<b>162053</b>	<b>108009</b>	<b>210842</b>	<b>181605</b>	<b>159514</b>	<b>126004</b>	<b>60525</b>	<b>215151</b>	<b>171724</b>	<b>196588</b>
c19	No. animals TB tested in previous 12 months	1645443	172711	117560	227507	198664	168919	143347	65905	226007	180684	212088
c24	No. animals TB tested in previous 13-24 months	1589397	166515	116445	210587	189547	160688	142075	60581	223294	176917	203443
c25	No. animals TB tested in 2014	1607647	166775	117083	214500	191533	163019	143992	61764	225642	177959	207181
c22	No. animals TB tested in 2013	1620055	172322	114133	214509	197072	166287	140842	62228	224389	180893	210490
c20	No. animals TB tested in 2012	1643626	171497	112484	213785	196069	168531	143005	64217	229674	181839	219225
c21	No. animals TB tested in 2011	1607171	166267	113201	216348	189655	159143	140627	64863	225656	178272	210299
c26	No. animals TB tested in 2010	1583268	166196	112039	211330	192545	154720	137920	61908	226145	173568	198460

**Month = November 2015**

Ref		<b>Total</b>	<b>Armagh</b>	<b>Ballymena</b>	<b>Coleraine</b>	<b>Dungannon</b>	<b>Enniskillen</b>	<b>Mallusk</b>	<b>L'derry</b>	<b>Newry</b>	<b>Nt'ards</b>	<b>Omagh</b>
f1	No. of Officially Tuberculosis Free Herds (OTF)	<b>26337</b>	2575	1649	2898	3147	3402	1955	1077	4195	1997	3442
f2	No. of Officially Tuberculosis Suspended Herds (OTS)	<b>1347</b>	191	56	164	161	134	135	46	194	101	165
f3	No. of Officially Tuberculosis Withdrawn Herds (OTW)	<b>1523</b>	162	54	214	204	119	108	56	245	176	185
f4	% herds that are OTF	<b>90.2</b>	87.9	93.7	88.5	89.6	93.1	88.9	91.3	90.5	87.8	90.8
f5	% herds that are OTS	<b>4.6</b>	6.5	3.2	5.0	4.6	3.7	6.1	3.9	4.2	4.4	4.4
f6	% herds that are OTW	<b>5.2</b>	5.5	3.1	6.5	5.8	3.3	4.9	4.7	5.3	7.7	4.9

		<b>Month = July 2015</b>										
		<b>(Data lagged by 4 months)</b>										
Ref		<b>Total</b>	<b>Armagh</b>	<b>Ballymena</b>	<b>Coleraine</b>	<b>Dungannon</b>	<b>Enniskillen</b>	<b>Mallusk</b>	<b>L'derry</b>	<b>Newry</b>	<b>Nt'ards</b>	<b>Omagh</b>
e19	Num. TB culture positive animals that were not TB reactors in last 12 months	630	57	41	73	59	36	45	13	112	104	90
e20	Num. TB culture positive animals that were not TB reactors in last 13-24 months	524	65	41	36	80	27	42	11	109	73	40
e6	Num. TB culture positive animals that were not TB reactors in 2014	575	68	37	54	66	38	53	12	100	80	67
e2	Num. TB culture positive animals that were not TB reactors in 2013	583	63	33	32	98	28	30	7	131	92	69
e3	Num. TB culture positive animals that were not TB reactors in 2012	600	62	32	48	66	32	31	9	155	91	74
e4	Num. TB culture positive animals that were not TB reactors in 2011	558	69	40	42	47	31	25	5	154	77	68
e5	Num. TB culture positive animals that were not TB reactors in 2010	567	86	36	51	54	37	36	5	108	95	59
e21	No. herds with TB culture positive animals that were not TB reactors in last 12 months	401	39	26	58	40	26	22	10	65	69	46
e22	No. herds with TB culture positive animals that were not TB reactors in last 13-24 months	374	51	22	26	55	22	25	10	73	58	32
e12	No. herds with TB culture positive animals that were not TB reactors in 2014	372	47	25	37	48	27	27	10	66	51	34
e8	No. herds with TB culture positive animals that were not TB reactors in 2013	381	50	14	30	46	20	20	5	83	60	53
e9	No. herds with TB culture positive animals that were not TB reactors in 2012	401	46	17	35	48	25	23	9	82	67	49
e10	No. herds with TB culture positive animals that were not TB reactors in 2011	363	48	17	31	32	27	17	3	87	56	45
e11	No. herds with TB culture positive animals that were not TB reactors in 2010	379	50	17	36	36	32	25	5	77	61	40
e23	% of TB animals that were TB culture positive that were not TB reactors in last 12 months	5.8	7.4	10.0	5.4	5.3	2.8	10.2	4.2	5.5	7.0	5.5
e24	% of TB animals that were TB culture positive that were not TB reactors in last 13-24 months	6.0	9.3	5.0	5.5	13.4	2.2	13.1	10.8	6.2	4.9	3.8
e18	% of TB animals that were TB culture positive that were not TB reactors in 2014	6.1	10.4	8.3	5.0	8.7	2.9	13.1	8.9	5.2	5.4	5.5
e14	% of TB animals that were TB culture positive that were not TB reactors in 2013	6.6	7.1	4.2	4.4	13.4	2.2	9.0	9.1	8.4	6.4	6.5
e15	% of TB animals that were TB culture positive that were not TB reactors in 2012	5.2	7.1	12.5	5.1	6.8	1.6	4.7	5.7	8.2	5.4	3.5
e16	% of TB animals that were TB culture positive that were not TB reactors in 2011	6.4	7.9	12.2	6.6	7.5	3.3	12.8	4.0	7.2	4.2	6.7
e17	% of TB animals that were TB culture positive that were not TB reactors in 2010	8.1	12.9	15.3	7.1	10.4	3.7	8.9	5.6	7.1	9.6	7.2

		<b>Month = July 2015</b>										
Ref	(Data lagged by 4 months)	<b>Total</b>	<b>Armagh</b>	<b>Ballymena</b>	<b>Coleraine</b>	<b>Dungannon</b>	<b>Enniskillen</b>	<b>Mallusk</b>	<b>L'derry</b>	<b>Newry</b>	<b>Nt'ards</b>	<b>Omagh</b>
g31	No. of confirmed TB reactors during last 12 months	5244	406	214	772	546	607	212	186	793	736	772
g32	No. of confirmed TB reactors during last 13-24 months	3802	306	458	324	245	456	111	55	633	710	504
g6	No. of confirmed TB reactors 2014	4346	294	229	591	392	561	156	84	725	722	592
g2	No. of confirmed TB reactors 2013	3765	377	422	373	255	520	116	40	541	636	485
g3	No. of confirmed TB reactors 2012	4836	339	131	416	429	821	241	83	698	730	948
g4	No. of confirmed TB reactors 2011	3867	382	134	294	230	495	72	73	809	818	560
g5	No. of confirmed TB reactors 2010	2828	206	101	378	203	455	197	36	517	398	337
g33	Total animals with confirmed TB during last 12 months	5874	463	255	845	605	643	257	199	905	840	862
g34	Total animals with confirmed TB in last 13-24 months	4326	371	499	360	325	483	153	66	742	783	544
g12	Total animals with confirmed TB in 2014	4921	362	266	645	458	599	209	96	825	802	659
g8	Total animals with confirmed TB in 2013	4348	440	455	405	353	548	146	47	672	728	554
g9	Total animals with confirmed TB in 2012	5436	401	163	464	495	853	272	92	853	821	1022
g10	Total animals with confirmed TB in 2011	4425	451	174	336	277	526	97	78	963	895	628
g11	Total animals with confirmed TB in 2010	3395	292	137	429	257	492	233	41	625	493	396
g35	Confirmed TB animal prevalence in last 12 months (%)	0.359	0.271	0.217	0.379	0.308	0.390	0.179	0.307	0.406	0.469	0.408
g36	Confirmed TB animal prevalence in last 13-24 months (%)	0.269	0.218	0.428	0.170	0.169	0.302	0.108	0.107	0.334	0.440	0.264
g18	Confirmed TB animal prevalence in 2014 (%)	0.306	0.217	0.227	0.301	0.239	0.367	0.145	0.155	0.366	0.451	0.318
g14	Confirmed TB animal prevalence in 2013 (%)	0.268	0.255	0.399	0.189	0.179	0.330	0.104	0.076	0.299	0.402	0.263
g15	Confirmed TB animal prevalence in 2012 (%)	0.331	0.234	0.145	0.217	0.252	0.506	0.190	0.143	0.371	0.452	0.466
g16	Confirmed TB animal prevalence in 2011 (%)	0.275	0.271	0.154	0.155	0.146	0.331	0.069	0.120	0.427	0.502	0.299
g17	Confirmed TB animal prevalence in 2010 (%)	0.214	0.176	0.122	0.203	0.133	0.318	0.169	0.066	0.276	0.284	0.200
g37	No. herds with confirmed TB in last 12 months	1809	146	100	279	185	223	79	61	263	221	252
g38	No. herds with confirmed TB in last 13-24 months	1564	148	146	148	155	182	85	38	267	192	203
g24	No. herds with confirmed TB in 2014	1606	126	123	199	171	181	85	50	253	195	223
g20	No. herds with confirmed TB in 2013	1648	157	120	174	144	210	77	29	293	206	238
g21	No. herds with confirmed TB in 2012	1739	148	69	183	161	223	77	52	292	230	304
g22	No. herds with confirmed TB in 2011	1392	138	63	160	116	177	43	38	277	184	196
g23	No. herds with confirmed TB in 2010	1230	120	62	165	111	157	70	24	218	167	136
g39	Confirmed TB herd prevalence in last 12 months (%)	7.64	6.32	7.05	10.72	6.41	7.14	4.71	6.79	7.07	11.40	8.13
g40	Confirmed TB herd prevalence in last 13-24 months (%)	6.71	6.46	10.47	5.81	5.43	5.93	5.14	4.29	7.31	10.11	6.61

g30	Confirmed TB herd prevalence in 2014 (%)	6.94	5.54	8.82	7.99	6.04	5.94	5.24	5.62	6.92	10.31	7.31
g26	Confirmed TB herd prevalence in 2013 (%)	7.17	7.02	8.87	6.88	5.08	6.88	4.84	3.32	8.10	11.06	7.86
g27	Confirmed TB herd prevalence in 2012 (%)	7.53	6.60	5.04	7.28	5.69	7.27	4.74	5.98	8.03	12.23	9.94
g28	Confirmed TB herd prevalence in 2011 (%)	6.03	6.28	4.54	6.23	4.13	5.77	2.62	4.31	7.55	10.18	6.41
g29	Confirmed TB herd prevalence in 2010 (%)	5.43	5.53	4.47	6.43	3.95	5.12	4.26	2.72	5.98	9.24	4.45

### Explanatory Comments for Tuberculosis Statistics - B. Testing Herds

Ref	Data Title	Explanation
B16	No. herds with any test completed in month	Test of any disease status and size (herd or animal-level). Tests with no animals are excluded.
B17	No. herds with any test, from start of year	<b>Test of any disease status and size (herd or animal-level) carried out on a herd since 1st January. Tests with no animals are excluded.</b>
B29	All herds with any test, from start of year	Skin test of any disease status and size (herd or animal-level) carried out on a herd since 1st January. Tests with no animals are included.
B18	No. herds with any test, from start of year (no cattle)	Herd or individual test of any disease status (routine, risk or restricted) where no cattle were recorded at all such tests since 1st January.
B19	No. herds with herd test completed in month	Herd level test of any disease status (routine, risk or restricted) completed during the above month. Tests with no animals are excluded.
B20	No. herds with herd test, from start of year	<b>Herd level test of any disease status (routine, risk or restricted) completed since 1st January. Tests with no animals are excluded.</b>
B30	All herds with herd test, from start of year	Herd level test of any disease status (routine, risk or restricted) completed since 1st January. Tests with no animals are included.
B21	No. herds with herd test, from start of year (no cattle)	Herd level test of any disease status (routine, risk or restricted) where no cattle were recorded at all such herd tests since 1st January.
B22	No. herds with herd test during last 12 months	Herd level test of any disease status (routine, risk or restricted) completed in the 12 month period from the above month. Tests with no animals are excluded.
B31	No. herds with herd test during last 13-24 months	Herd level test of any disease status (routine, risk or restricted) completed in the 13-24 months from the above month. Tests with no animals are excluded.
B39	No. herds with herd test during the year	Herd level test of any disease status (routine, risk or restricted) completed in the calendar year. Tests with no animals are excluded.
B32	No. herds with herd test during the year	Herd level test of any disease status (routine, risk or restricted) completed in the calendar year. Tests with no animals are excluded.
B28	No. herds with herd test during the year	Herd level test of any disease status (routine, risk or restricted) completed in the calendar year. Tests with no animals are excluded.
B23	No. herds with herd test during the year	Herd level test of any disease status (routine, risk or restricted) completed in the calendar year. Tests with no animals are excluded.
B24	No. herds with herd test during the year	Herd level test of any disease status (routine, risk or restricted) completed in the calendar year. Tests with no animals are excluded.
B25	No. herds with any risk test completed	Herd has had a herd or individual level risk test since start of calendar year and number tested > 0.
B26	No. herds with herd risk test completed	Herd has had a herd level risk test since start of calendar year and number tested > 0.
B27	No. herds with restricted herd test completed	Herd has had a restricted herd test (RHT, RH1, RH2) since start of calendar year and number tested > 0.

### Explanatory Comments for Tuberculosis Statistics - C. Testing Animals

Ref	Data Title	Explanation
C1	Total number of tests in current month	Number of herds and individual tests performed in the month stated above. Tests with no animals are excluded.
C2	Total number of tests from start of year	<b>From 1st January. Tests with no animals are excluded.</b>
C3	No. tests during the same time period in the previous year	From 1st January of previous year. Tests with no animals are excluded.
C4	% change between years	<b>Difference between the number of tests carried out during the current year and the number carried out in the previous expressed as a percentage.</b>
C5	No. tests in the previous 12 months	Last 12 month period from the above month. Tests with no animals are excluded.
C6	No. animal tests in current month	Animal test = a count of the number of animals tested within each herd or individual test. Some animals may have been tested multiple times during the year.
C7	No. animal tests from start of year	Number of animal tests carried out since 1st January.
C8	No. animal tests during the same time period in the previous year	Number of animal tests carried out from 1st January in the previous year over the same time interval as recorded for the current year.
C9	% change between years	Difference between the number of animal tests during the current year and the number carried out in the previous expressed as a percentage.
C10	No. animal tests in previous 12 months	Last 12 month period from the above month.
C11	No. cattle eligible for TB testing	Based on the average number of animals presented at TB herd tests over last 4 years.
C12	No. cattle herds eligible for TB testing	Based on cattle being presented for a TB herd tests over last 4 years. Herds with '0' cattle are excluded.

<b>C13</b>	<b>No. restricted herd tests during month</b>	All restricted herd tests (RHT, RH1 and RH2) carried out during the above month.
<b>C14</b>	<b>No. animals tested</b>	Total of the animals reported as being tested within restricted herd tests (RHT, RH1, RH2) during the above month.
<b>C15</b>	<b>No. herd tests during month</b>	Total of the animals reported as being tested within all herd tests during the above month.
<b>C16</b>	<b>No. animals tested</b>	Total of the animals reported as being tested within all herd tests during the above month.
<b>C17</b>	<b>No. individual tests during month</b>	Total of the animals reported as being tested within all individual tests during the above month.
<b>C18</b>	<b>No. animals tested</b>	Total of the animals reported as being tested within all individual tests during the above month.
<b>C23</b>	<b>No. animals TB tested since start of year</b>	Animals identified as having had at least one TB skin test since the start of the calendar year. Due to the same animals being sampled in different DVO areas, the 'Total' is not the sum of the DVO figures.
<b>C19</b>	<b>No. animals TB tested in previous 12 months</b>	Animals identified as having had at least one TB skin test during the last 12 month period from the above month. Due to the same animals being sampled in different DVO areas, the 'Total' is not the sum of the DVO figures.
<b>C24</b>	<b>No. animals TB tested in previous 13-24 months</b>	Animals identified as having had at least one TB skin test during the last 13-24 months from the above month. Due to the same animals being sampled in different DVO areas, the 'Total' is not the sum of the DVO figures.
<b>C26</b>	<b>No. animals TB tested in the year</b>	Animals identified as having had at least one TB skin test during the calendar year. Due to the same animals being sampled in different DVO areas, the 'Total' is not the sum of the DVO figures.
<b>C25</b>	<b>No. animals TB tested in the year</b>	Animals identified as having had at least one TB skin test during the calendar year. Due to the same animals being sampled in different DVO areas, the 'Total' is not the sum of the DVO figures.
<b>C22</b>	<b>No. animals TB tested in the year</b>	Animals identified as having had at least one TB skin test during the calendar year. Due to the same animals being sampled in different DVO areas, the 'Total' is not the sum of the DVO figures.
<b>C20</b>	<b>No. animals TB tested in the year</b>	Animals identified as having had at least one TB skin test during the calendar year. Due to the same animals being sampled in different DVO areas, the 'Total' is not the sum of the DVO figures.
<b>C21</b>	<b>No. animals TB tested in the year</b>	Animals identified as having had at least one TB skin test during the calendar year. Due to the same animals being sampled in different DVO areas, the 'Total' is not the sum of the DVO figures.
<b>Explanatory Comments for Tuberculosis Statistics - D. Results</b>		
<b>Ref</b>	<b>Data Title</b>	<b>Explanation</b>
<b>D1</b>	<b>No. of herds with TB reactors during month</b>	A herd is included in this figure if the herd number had a TB skin test reactor during the above month.
<b>D2</b>	<b>No. of new reactor herds during month</b>	A herd is defined as being a TB reactor herd if it had at least one TB reactor animal in that month and no TB reactor animals during the previous 12 months.
<b>D3</b>	<b>No. of new reactor herds since start of year</b>	= Since 1st January
<b>D4</b>	<b>No. of new reactor herds in the previous 12 months</b>	Last 12 month period from the above month.
<b>D26</b>	<b>No. of new reactor herds in previous 13-24 months</b>	Last 13-24 month period from the above month.
<b>D5</b>	<b>No. of TB reactor animals during month</b>	A TB reactor animal is defined as an animal where the manual interpretation field for a skin test is positive ('P') with the first test date being taken as the time at which the animal became a reactor. Currently animals with lesions at routine slaughter (*LRS*) are not taken into account.
<b>D6</b>	<b>No. of TB reactor animals since start of year</b>	= Since 1st January
<b>D7</b>	<b>No. of reactor animals in the previous 12 months</b>	Last 12 month period from the above month.
<b>D27</b>	<b>No. of reactor animals in previous 13-24 months</b>	Last 13-24 month period from the above month.
<b>D20</b>	<b>Cumulative herd incidence in year (%)</b>	Number of NEW reactor herds since the start of the calendar year as a proportion of cattle herds which have presented cattle for a TB herd test during the same time period.
<b>D9</b>	<b>Annual herd incidence over the last 12 months (%)</b>	Number of NEW reactor herds during the last 12 months as a proportion of cattle herds which have presented cattle for a TB herd test during the same time period.
<b>D28</b>	<b>Annual herd incidence over the last 13-24 months (%)</b>	Number of NEW reactor herds during the last 13-24 months as a proportion of cattle herds which have presented cattle for a TB herd test during the same time period.
<b>D38</b>	<b>In-year Herd Incidence (%)</b>	Number of NEW reactor herds during the year as a proportion of cattle herds which have presented cattle for a TB herd test during the same time period.
<b>D30</b>	<b>In-year Herd Incidence (%)</b>	Number of NEW reactor herds during the year as a proportion of cattle herds which have presented cattle for a TB herd test during the same time period.
<b>D16</b>	<b>In-year Herd Incidence (%)</b>	Number of NEW reactor herds during the year as a proportion of cattle herds which have presented cattle for a TB herd test during the same time period.
<b>D10</b>	<b>In-year Herd Incidence (%)</b>	Number of NEW reactor herds during the year as a proportion of cattle herds which have presented cattle for a TB herd test during the same time period.
<b>D11</b>	<b>In-year Herd Incidence (%)</b>	Number of NEW reactor herds during the year as a proportion of cattle herds which have presented cattle for a TB herd test during the same time period.
<b>D21</b>	<b>Cumulative animal incidence in year (%)</b>	Number of reactor animals during the above month as a proportion of cattle which have been presented for a TB test during the same time period.
<b>D12</b>	<b>Annual animal incidence over the last 12 months (%)</b>	Number of reactor animals during the last 12 months as a proportion of cattle which have been presented for a TB test during the same time period.
<b>D29</b>	<b>Annual animal incidence over the last 13-24 months (%)</b>	Number of reactor animals during the last 13-24 months as a proportion of cattle which have been presented for a TB test during the same time period.



<b>D39</b>	<b>In year Animal Incidence (%)</b>	Number of reactor animals during the year as a proportion of cattle which have been presented for a TB herd test during the same time period.
<b>D31</b>	<b>In year Animal Incidence (%)</b>	Number of reactor animals during the year as a proportion of cattle which have been presented for a TB herd test during the same time period.
<b>D15</b>	<b>In year Animal Incidence (%)</b>	Number of reactor animals during the year as a proportion of cattle which have been presented for a TB herd test during the same time period.
<b>D13</b>	<b>In year Animal Incidence (%)</b>	Number of reactor animals during the year as a proportion of cattle which have been presented for a TB herd test during the same time period.
<b>D14</b>	<b>In year Animal Incidence (%)</b>	Number of reactor animals during the year as a proportion of cattle which have been presented for a TB herd test during the same time period.
<b>D34</b>	<b>APT during current month</b>	= The reactor disclosure rate per 1,000 animal tests current calendar month.
<b>D22</b>	<b>APT since start of year</b>	The reactor disclosure rate per 1,000 animal tests since the start of the calendar year.
<b>D17</b>	<b>Current 12 month moving average APT</b>	The reactor disclosure rate per 1,000 animal tests. Current refers to the rate over the last 12 months.
<b>D42</b>	<b>In year APT</b>	The reactor disclosure rate per 1,000 animal tests during the calendar year.
<b>D40</b>	<b>In year APT</b>	The reactor disclosure rate per 1,000 animal tests during the calendar year.
<b>D32</b>	<b>In year APT</b>	The reactor disclosure rate per 1,000 animal tests during the calendar year.
<b>D18</b>	<b>In year APT</b>	The reactor disclosure rate per 1,000 animal tests during the calendar year.
<b>D19</b>	<b>In year APT</b>	The reactor disclosure rate per 1,000 animal tests during the calendar year.
<b>D23</b>	<b>No. negative in contacts since start of year</b>	Number of animals taken as negative in contacts since the start of the year.
<b>d46</b>	<b>No. Negative in contacts over last 12 months (%)</b>	= Number of negative in contacts during the last 12 months
<b>D43</b>	<b>No. negative in contacts during the year</b>	Number of animals taken as negative in contacts during the year.
<b>D41</b>	<b>No. negative in contacts during the year</b>	Number of animals taken as negative in contacts during the year.
<b>D33</b>	<b>No. negative in contacts during the year</b>	Number of animals taken as negative in contacts during the year.
<b>D24</b>	<b>No. negative in contacts during the year</b>	Number of animals taken as negative in contacts during the year.
<b>D25</b>	<b>No. negative in contacts during the year</b>	Number of animals taken as negative in contacts during the year.
<b>D37</b>	<b>Reactor removal time during the year</b>	Figures given are median values for working days estimated from calendar days (calendar days multiplied by 0.685). Reactors which are not yet slaughtered or where they they were first declared as reactors at slaughter are excluded.
<b>D45</b>	<b>Reactor removal time during the year</b>	Figures given are median values for working days estimated from calendar days (calendar days multiplied by 0.685). Reactors which are not yet slaughtered or where they they were first declared as reactors at slaughter are excluded.
<b>D35</b>	<b>Reactor removal time during the year</b>	Figures given are median values for working days estimated from calendar days (calendar days multiplied by 0.685). Reactors which are not yet slaughtered or where they they were first declared as reactors at slaughter are excluded.
<b>D44</b>	<b>Reactor removal time during the year</b>	Figures given are median values for working days estimated from calendar days (calendar days multiplied by 0.685). Reactors which are not yet slaughtered or where they they were first declared as reactors at slaughter are excluded.
<b>D36</b>	<b>Reactor removal time during the year</b>	Figures given are median values for working days estimated from calendar days (calendar days multiplied by 0.685). Reactors which are not yet slaughtered or where they they were first declared as reactors at slaughter are excluded.



<a href="#">g35</a>	Confirmed TB animal prevalence in last 12 months (%)	Number of TB reactors that were confirmed during the last 12 months by the presence of visible lesions at slaughter and/or by laboratory confirmation (histopathology and/or culture) plus the number of other animals where M. bovis was cultured from TB-like lesions found at slaughter during the last 12 months that were not identified as TB reactor animals divided by the number of animals tuberculin tested during the last 12 months expressed as a %
<a href="#">g36</a>	Confirmed TB animal prevalence in last 13-24 months (%)	Number of TB reactors that were confirmed during the last 13-24 months by the presence of visible lesions at slaughter and/or by laboratory confirmation (histopathology and/or culture) plus the number of other animals where M. bovis was cultured from TB-like lesions found at slaughter during the last 13-24 months that were not identified as TB reactor animals divided by the number of animals tuberculin tested during the last 13-24 months expressed as a %
<a href="#">g18</a>	Confirmed TB animal prevalence in year (%)	Number of TB reactors that were confirmed during the year by the presence of visible lesions at slaughter and/or by laboratory confirmation (histopathology and/or culture) plus the number of other animals where M. bovis was cultured from TB-like lesions found at slaughter during the year that were not identified as TB reactor animals divided by the number of animals tuberculin tested during the year expressed as a %
<a href="#">g14</a>	Confirmed TB animal prevalence in year (%)	Number of TB reactors that were confirmed during the year by the presence of visible lesions at slaughter and/or by laboratory confirmation (histopathology and/or culture) plus the number of other animals where M. bovis was cultured from TB-like lesions found at slaughter during the year that were not identified as TB reactor animals divided by the number of animals tuberculin tested during the year expressed as a %
<a href="#">g15</a>	Confirmed TB animal prevalence in year (%)	Number of TB reactors that were confirmed during the year by the presence of visible lesions at slaughter and/or by laboratory confirmation (histopathology and/or culture) plus the number of other animals where M. bovis was cultured from TB-like lesions found at slaughter during the year that were not identified as TB reactor animals divided by the number of animals tuberculin tested during the year expressed as a %
<a href="#">g16</a>	Confirmed TB animal prevalence in year (%)	Number of TB reactors that were confirmed during the year by the presence of visible lesions at slaughter and/or by laboratory confirmation (histopathology and/or culture) plus the number of other animals where M. bovis was cultured from TB-like lesions found at slaughter during the year that were not identified as TB reactor animals divided by the number of animals tuberculin tested during the year expressed as a %
<a href="#">g17</a>	Confirmed TB animal prevalence in year (%)	Number of TB reactors that were confirmed during the year by the presence of visible lesions at slaughter and/or by laboratory confirmation (histopathology and/or culture) plus the number of other animals where M. bovis was cultured from TB-like lesions found at slaughter during the year that were not identified as TB reactor animals divided by the number of animals tuberculin tested during the year expressed as a %
<a href="#">g37</a>	No. herds with confirmed TB in last 12 months	Herds that had at least one confirmed TB animal during the last 12 months.
<a href="#">g38</a>	No. herds with confirmed TB in last 13-24 months	Herds that had at least one confirmed TB animal during the last 13-24 months.
<a href="#">g24</a>	No. herds with confirmed TB in year	Herds that had at least one confirmed TB animal during the year.
<a href="#">g20</a>	No. herds with confirmed TB in year	Herds that had at least one confirmed TB animal during the year.
<a href="#">g21</a>	No. herds with confirmed TB in year	Herds that had at least one confirmed TB animal during the year.
<a href="#">g22</a>	No. herds with confirmed TB in year	Herds that had at least one confirmed TB animal during the year.
<a href="#">g23</a>	No. herds with confirmed TB in year	Herds that had at least one confirmed TB animal during the year.
<a href="#">g39</a>	Confirmed TB herd prevalence in last 12 months (%)	Number of herds that had at least one confirmed TB animal during the last 12 months divided the number of herds that presented cattle at a TB herd test expressed as a %.
<a href="#">g40</a>	Confirmed TB herd prevalence in last 13-24 months (%)	Number of herds that had at least one confirmed TB animal during the last 13-24 months divided the number of herds that presented cattle at a TB herd test expressed as a %.
<a href="#">g30</a>	Confirmed TB herd prevalence in year (%)	Number of herds that had at least one confirmed TB animal during the year divided the number of herds that presented cattle at a TB herd test expressed as a %.
<a href="#">g26</a>	Confirmed TB herd prevalence in year (%)	Number of herds that had at least one confirmed TB animal during the year divided the number of herds that presented cattle at a TB herd test expressed as a %.
<a href="#">g27</a>	Confirmed TB herd prevalence in year (%)	Number of herds that had at least one confirmed TB animal during the year divided the number of herds that presented cattle at a TB herd test expressed as a %.
<a href="#">g28</a>	Confirmed TB herd prevalence in year (%)	Number of herds that had at least one confirmed TB animal during the year divided the number of herds that presented cattle at a TB herd test expressed as a %.
<a href="#">g29</a>	Confirmed TB herd prevalence in year (%)	Number of herds that had at least one confirmed TB animal during the year divided the number of herds that presented cattle at a TB herd test expressed as a %.