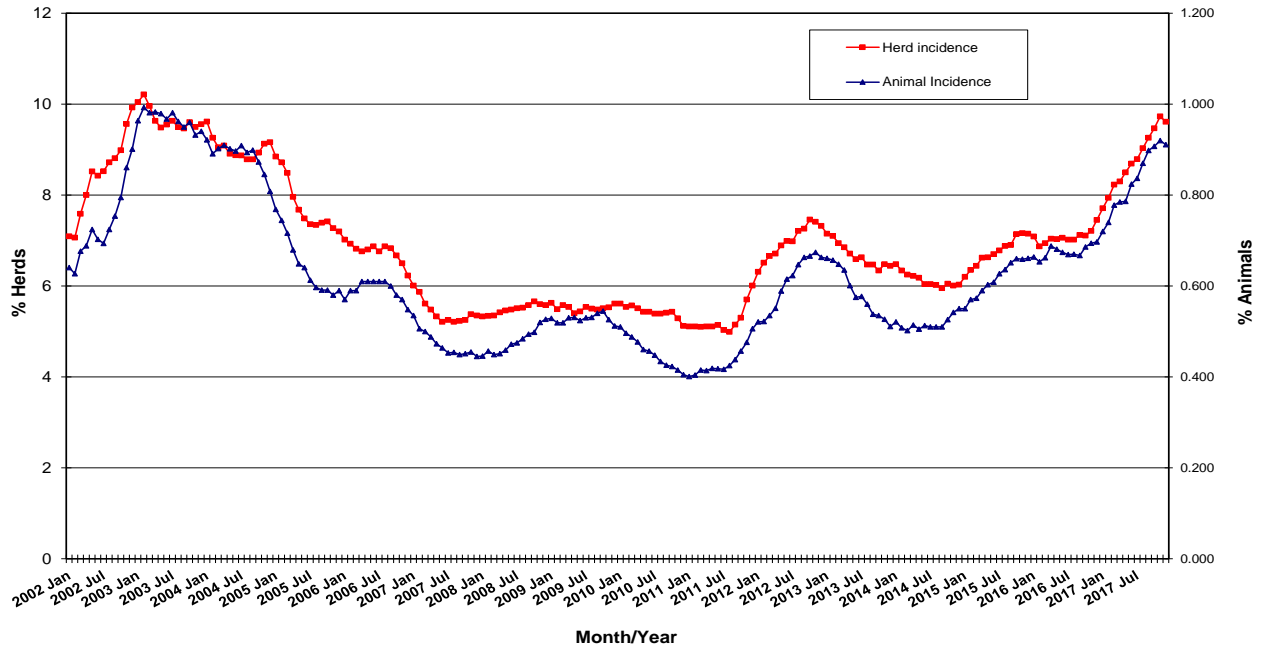
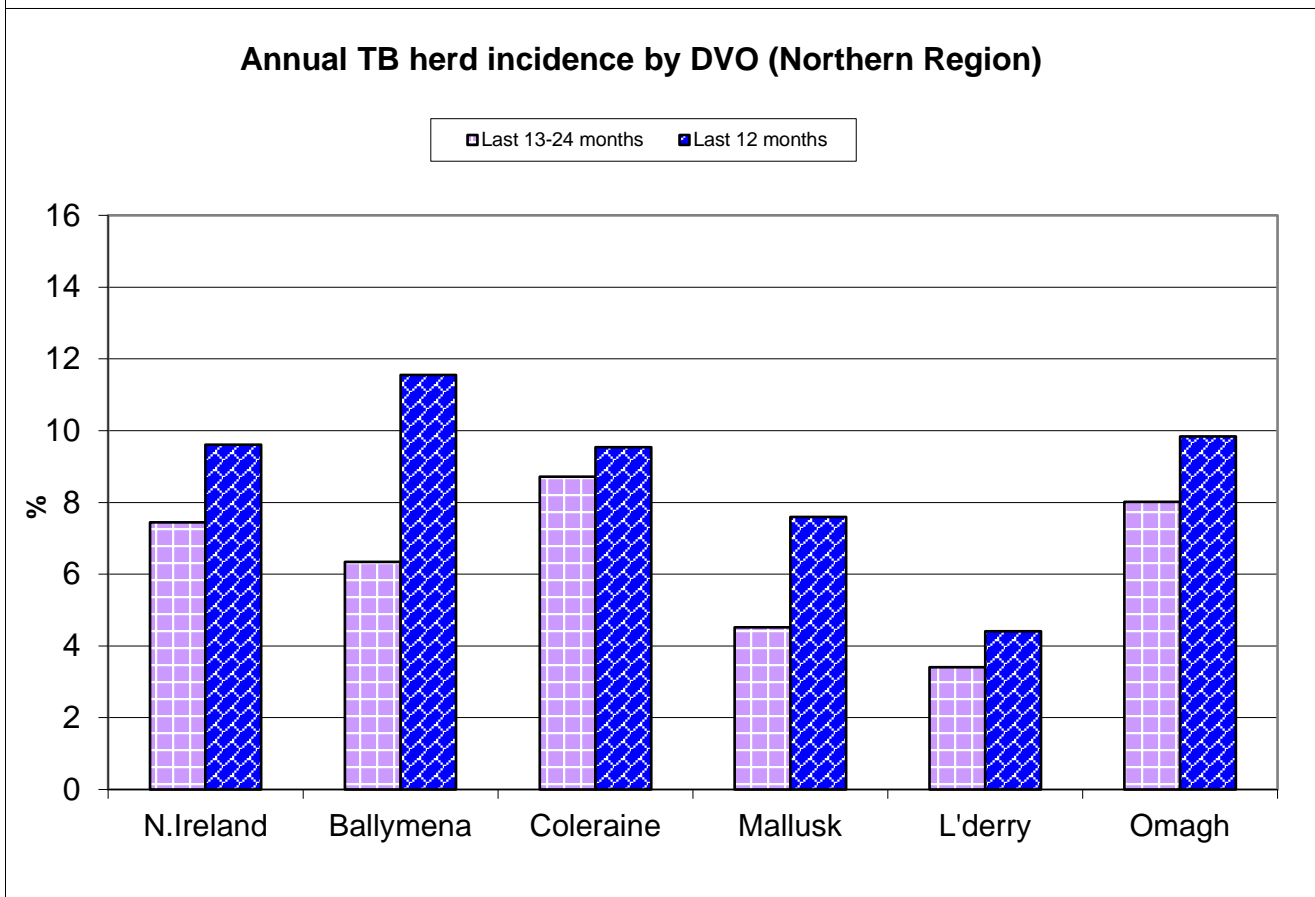
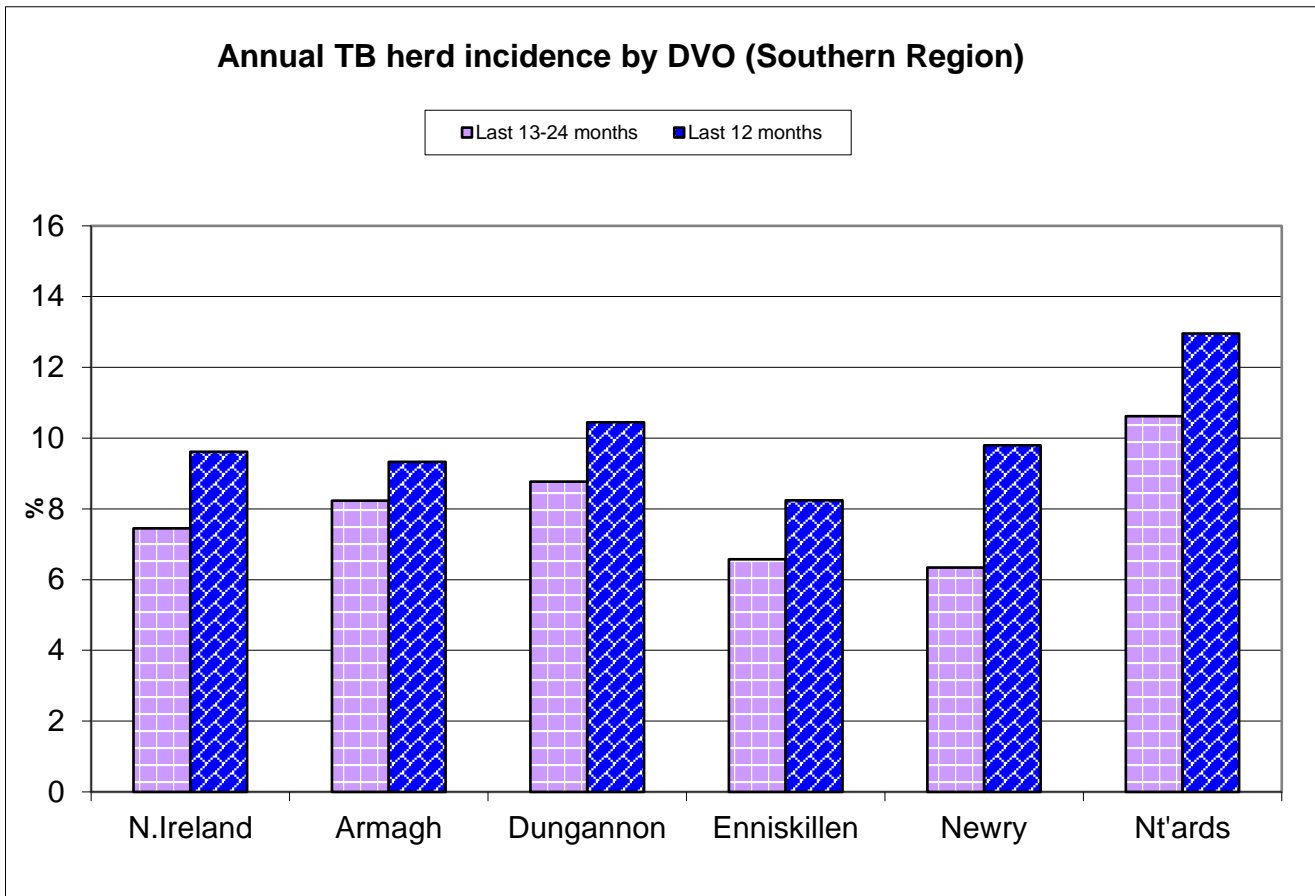


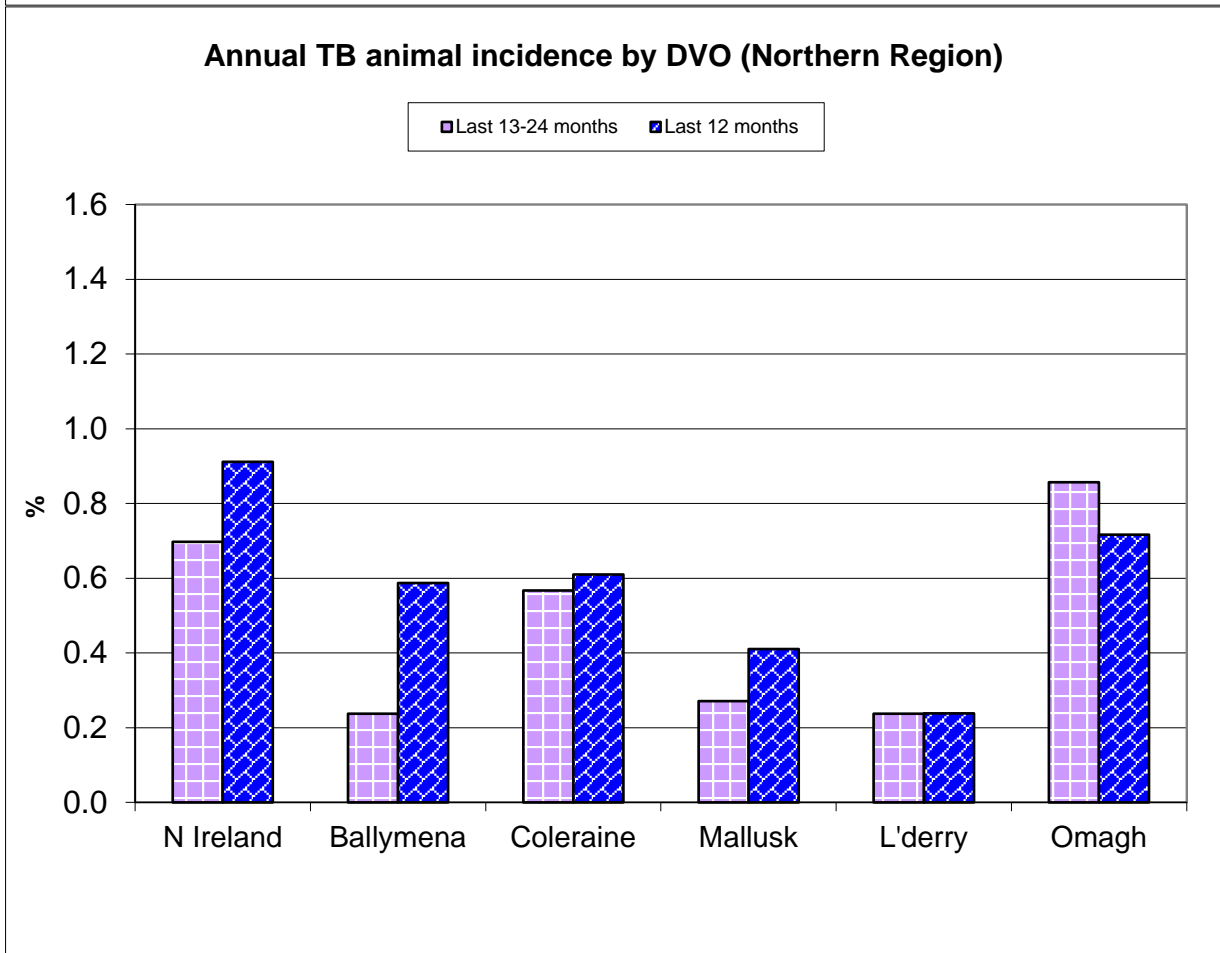
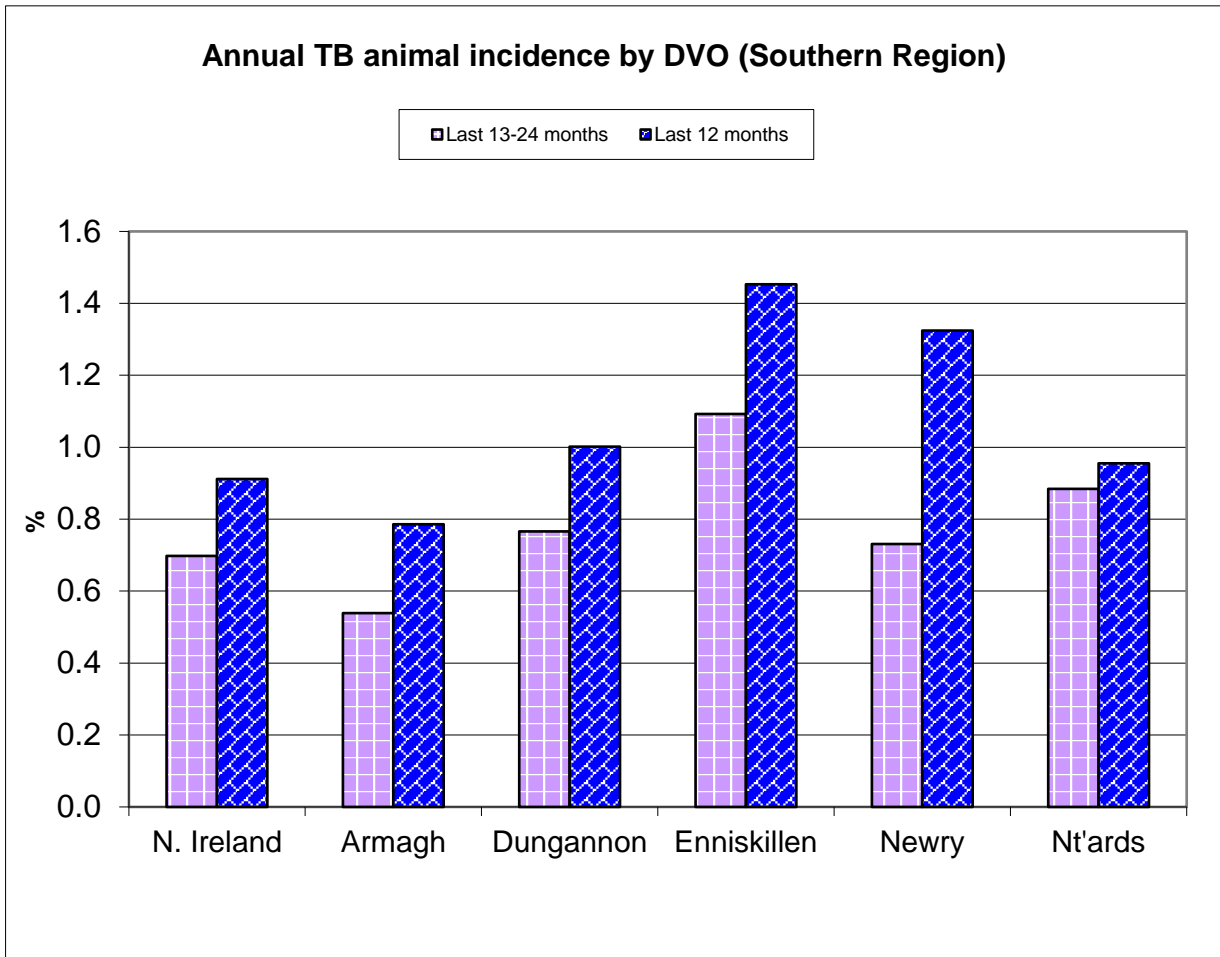
**Tuberculosis: Statistics for December 2017**

<b>Tests Completed</b>	Herds	<a href="#">Number of herds tested (any test), by DVO</a>	<a href="#">Cumulative Statistics</a>	
		<a href="#">Number of herds with herd-level test, by DVO</a>	<a href="#">Cumulative Statistics</a>	
		<a href="#">Number of herds with any risk test, by DVO</a>		
		<a href="#">Number of herds with herd-level risk test, by DVO</a>		
		<a href="#">Number of herds with herd-level restricted test, by DVO</a>		
	Animals	<a href="#">Total number of tests performed, by DVO</a>	<a href="#">Cumulative Statistics</a>	
		<a href="#">Total number of animals tests, by DVO</a>	<a href="#">Cumulative Statistics</a>	
		<a href="#">Total number of restricted herd tests, by DVO</a>	<a href="#">Number of animals tested</a>	
		<a href="#">Total number of herd tests, by DVO</a>	<a href="#">Number of animals tested</a>	
		<a href="#">Total number of individual tests, by DVO</a>	<a href="#">Number of animals tested</a>	
<a href="#">Total number of animals tested, by DVO</a>				
<b>Summary Statistics</b>	<a href="#">Herds with TB reactors during month, by DVO</a>	<a href="#">Cumulative Statistics</a>	<a href="#">APT</a>	
	<a href="#">Number of new reactor herds, by DVO</a>	<a href="#">Cumulative Statistics</a>	<a href="#">Negative-in-contacts</a>	
	<a href="#">Number of new reactor animals, by DVO</a>		<a href="#">Reactor removal times</a>	
	<a href="#">Herd Prevalance</a>			
	<a href="#">Herd Incidence</a>			
	<a href="#">Animal Incidence</a>			
	<a href="#">Number of reactor animals by month and by DVO</a>			
	<a href="#">Number of new reactor herds by month and by DVO</a>			
	<a href="#">Total number of all reactor herds by DVO</a>			
<b>Summary Charts</b>	<a href="#">Current Animal Incidence Chart</a>	<a href="#">Monthly TB reactors chart</a>	<a href="#">Yearly Confirmed Herd Prevalence</a>	
	<a href="#">Yearly Animal Incidence Chart</a>	<a href="#">New TB reactor herds</a>	<a href="#">Current Confirmed Herd Prevalence</a>	
	<a href="#">Current Herd Incidence Chart</a>	<a href="#">TB Herd &amp; Animal Incidence</a>		
	<a href="#">Yearly Herd Incidence Chart</a>			

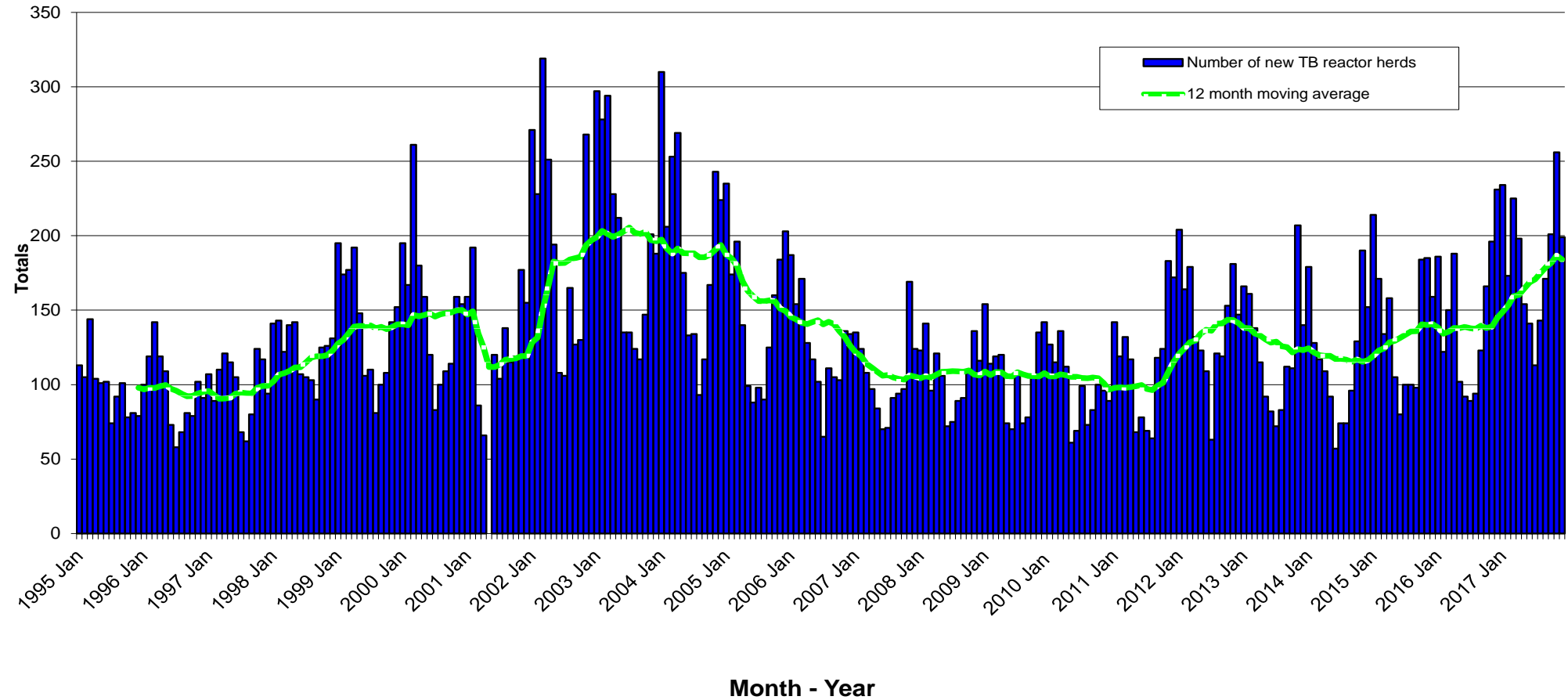
**TB Herd and Animal Incidence:  
(12 month moving average: January 2002 to December 2017)**



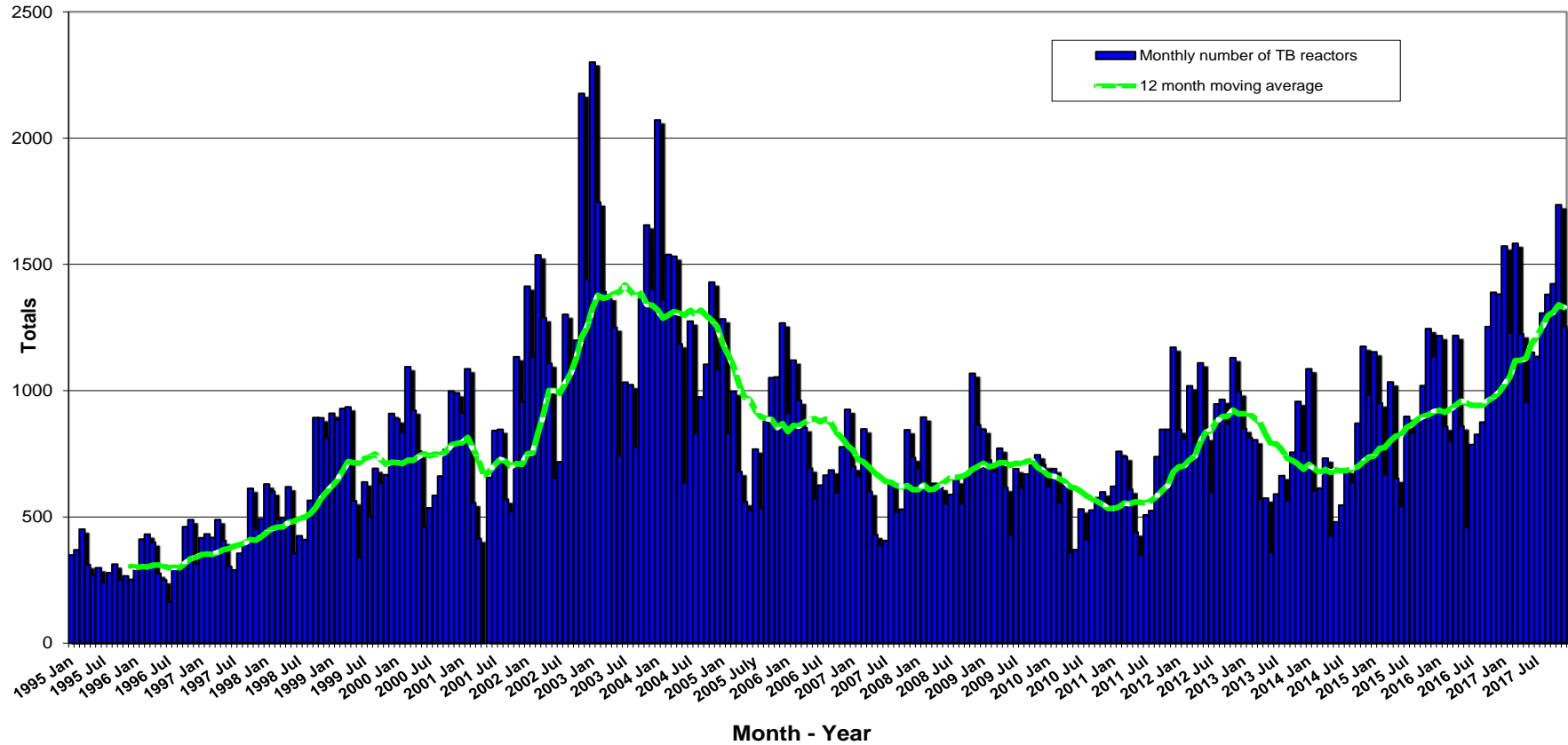




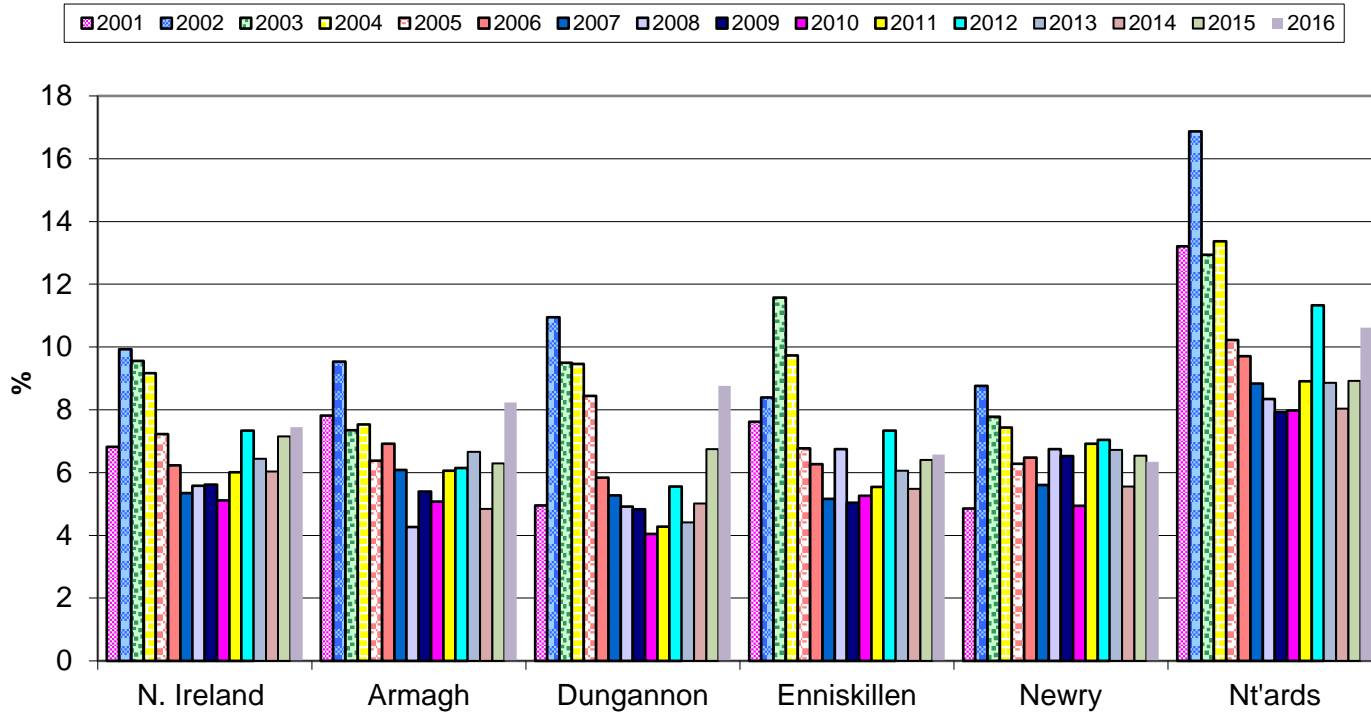
New TB Reactor Herds: January 1995 to December 2017



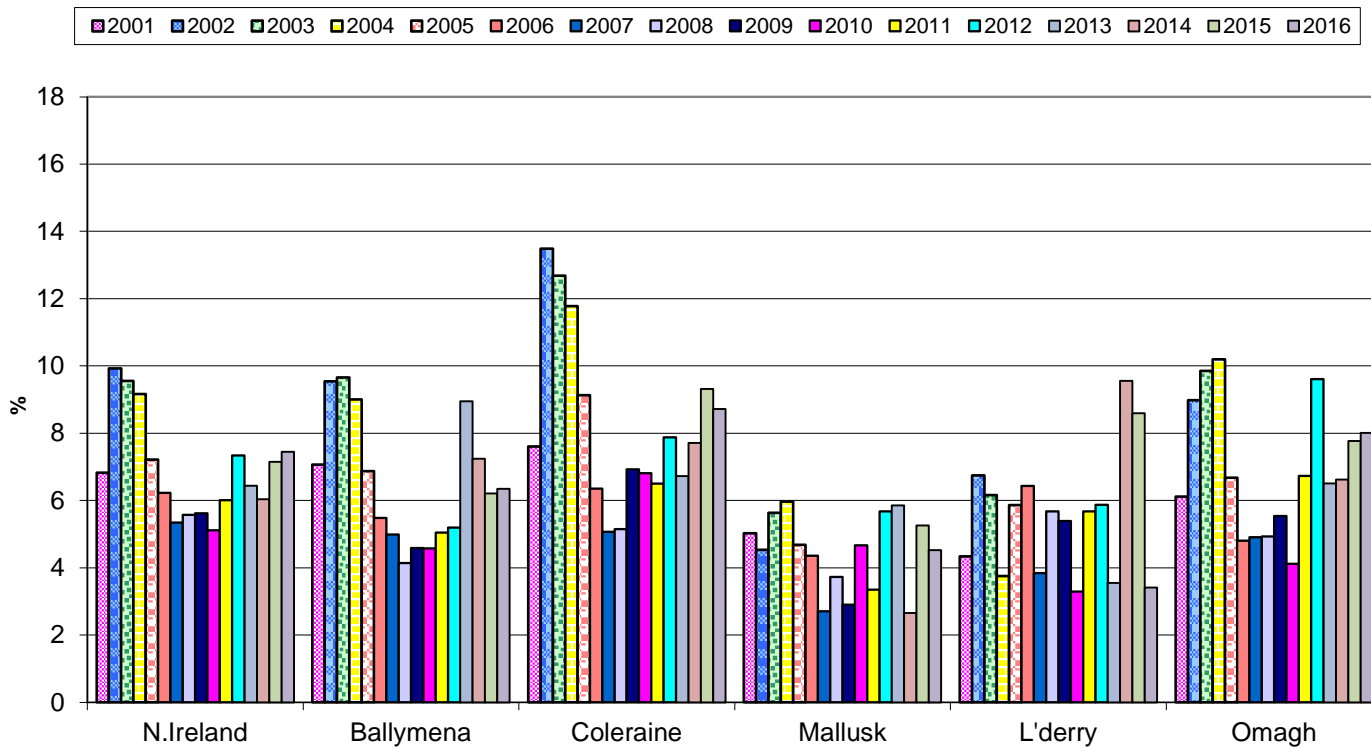
TB Reactors: January 1995 to December 2017

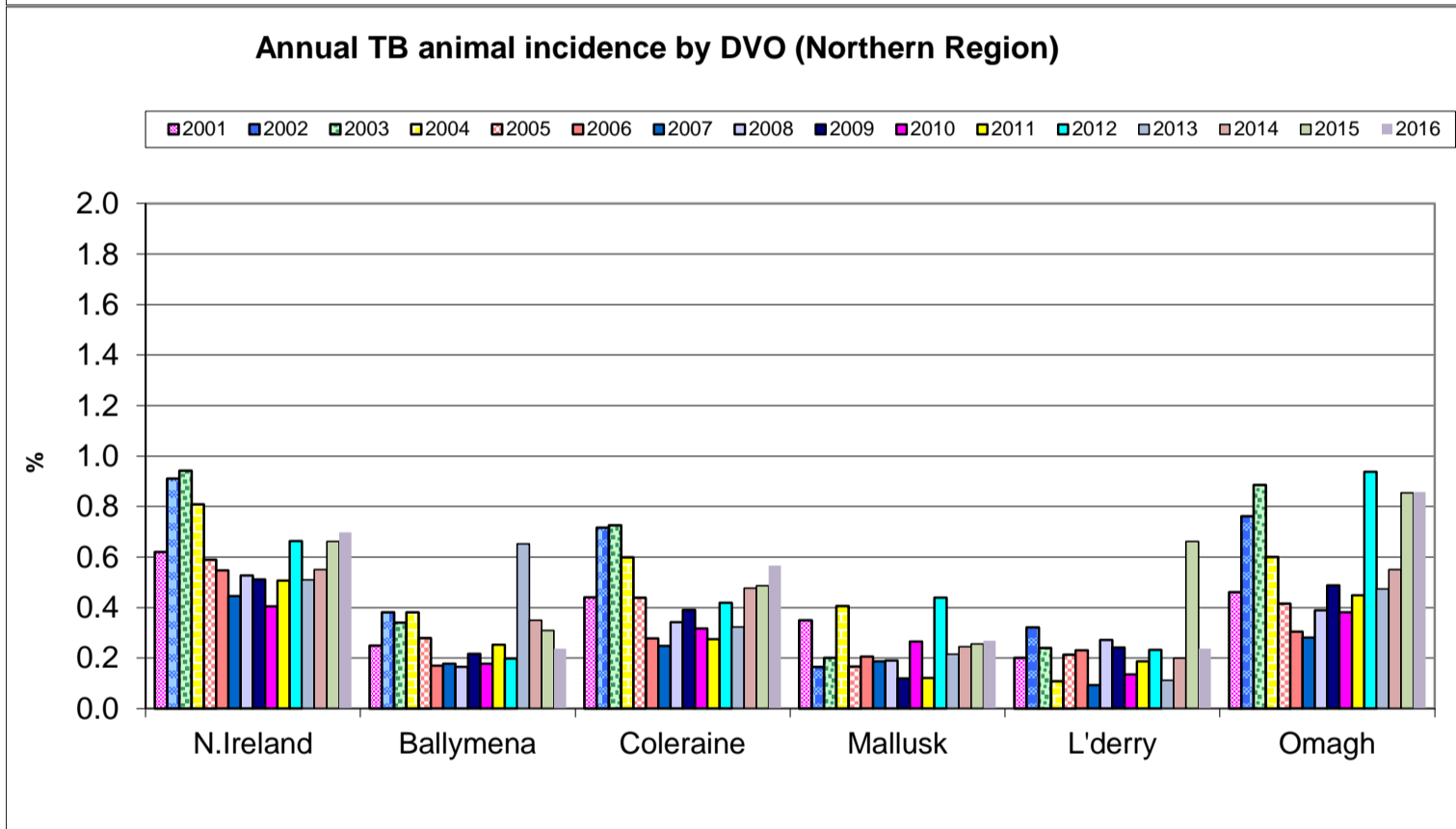
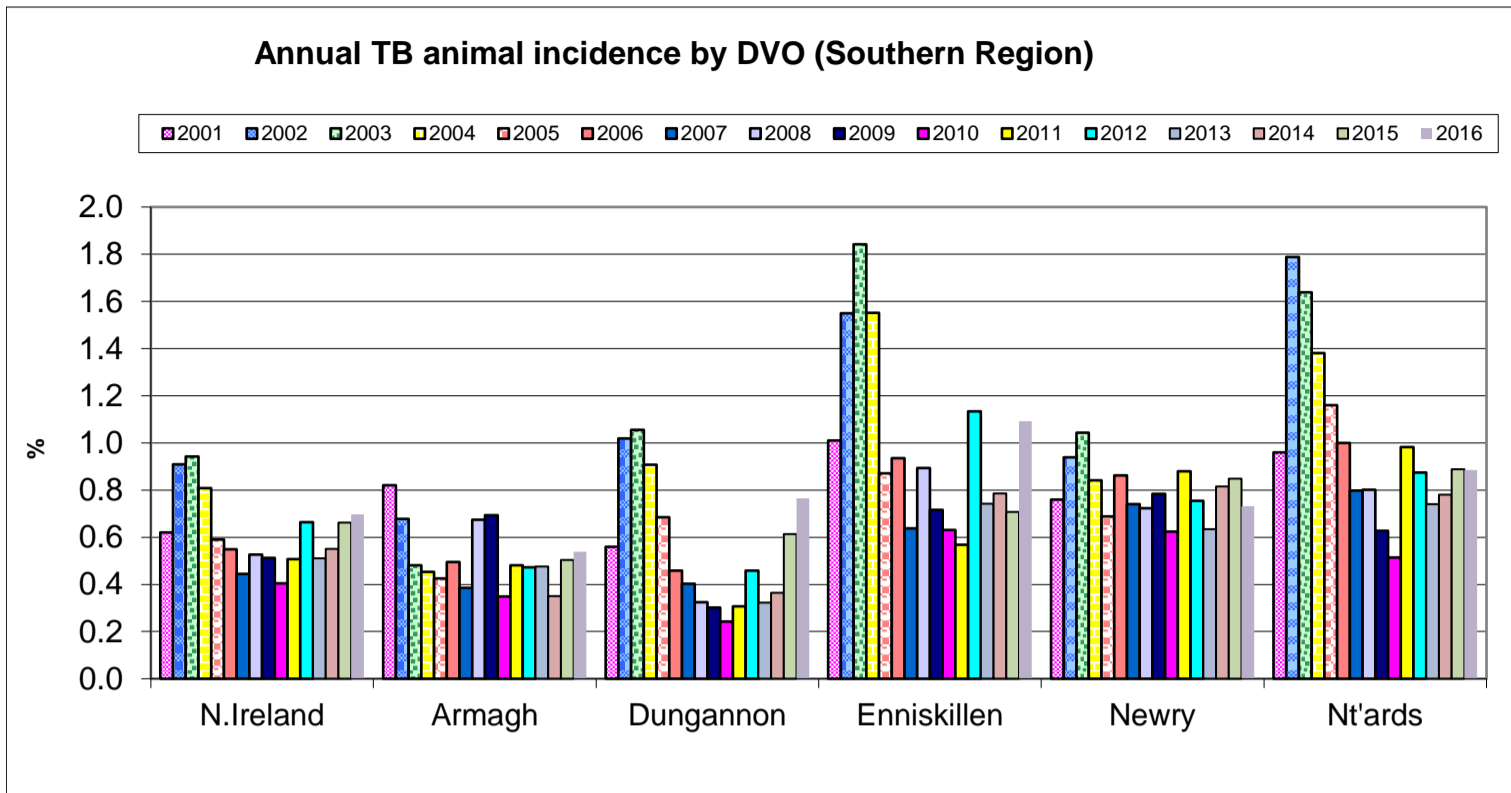


### Annual TB herd incidence by DVO (Southern Region)



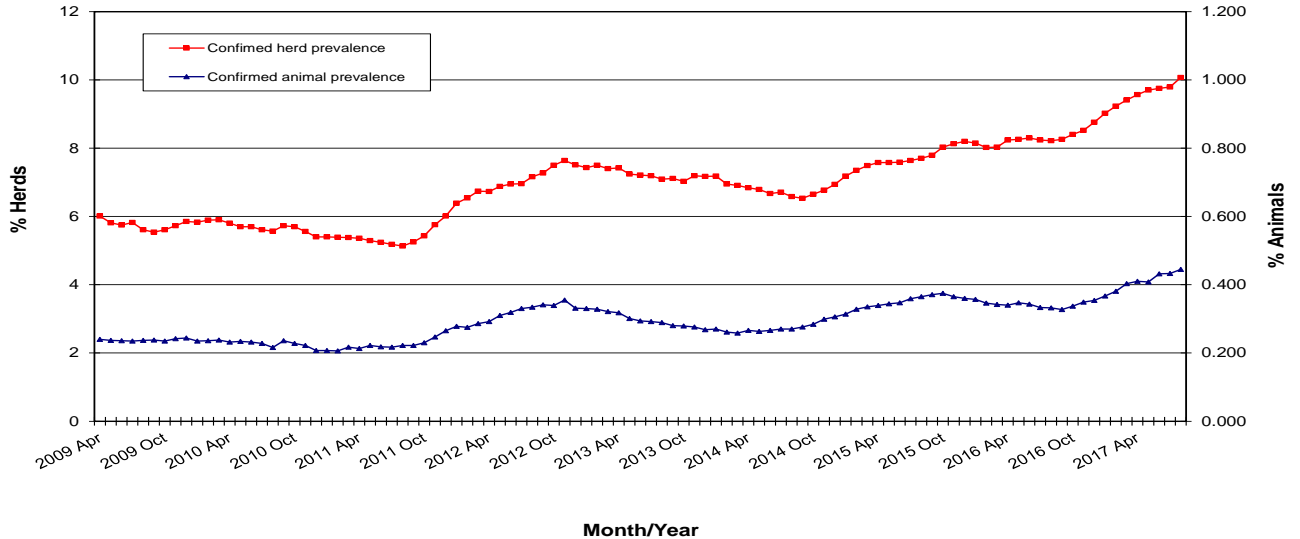
### Annual TB herd incidence by DVO (Northern Region)



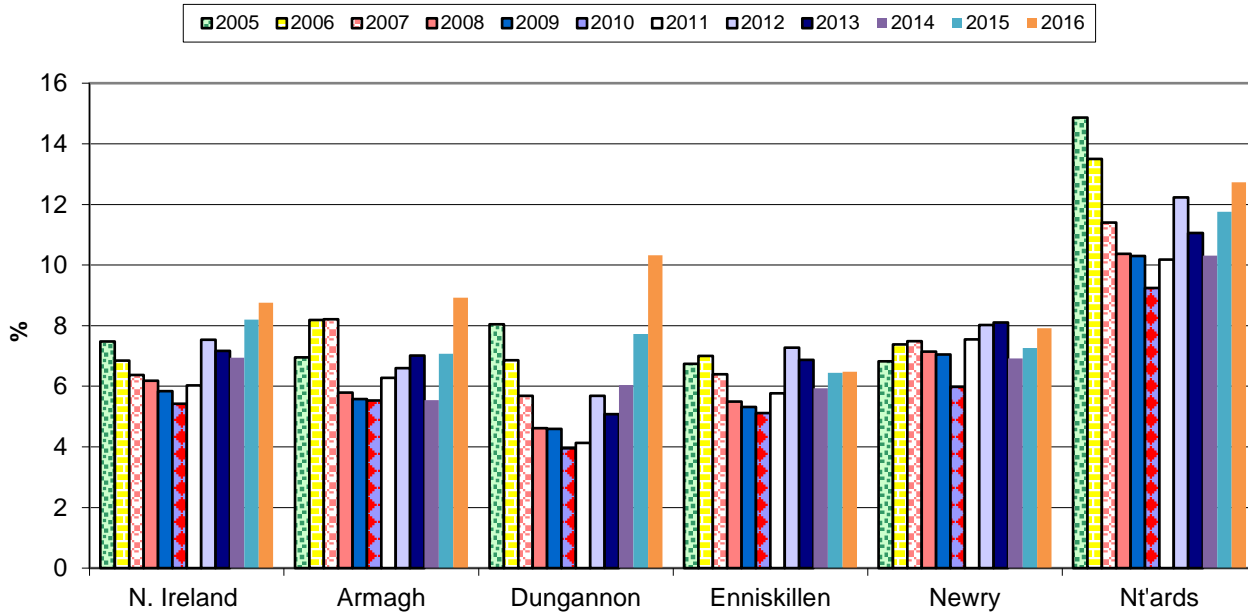




**TB Confirmed Herd^ and Animal Prevalence:  
(12 month moving average: April 2009 to August 2017)**

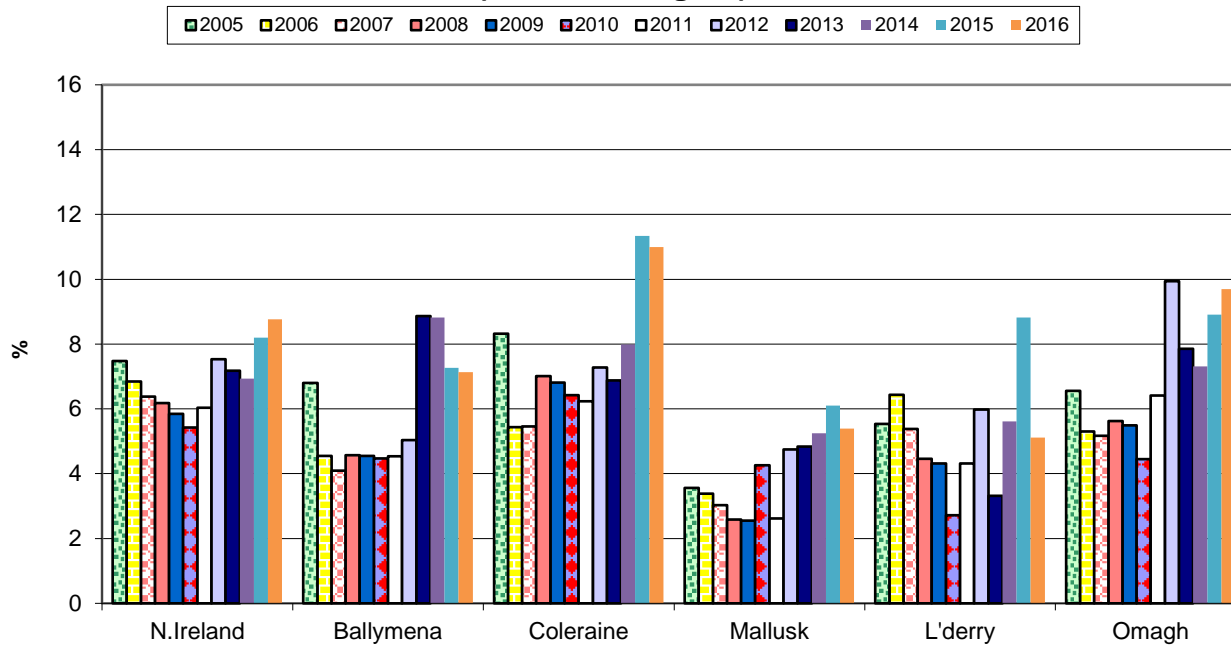


### Annual confirmed TB herd prevalence by DVO (Southern Region)



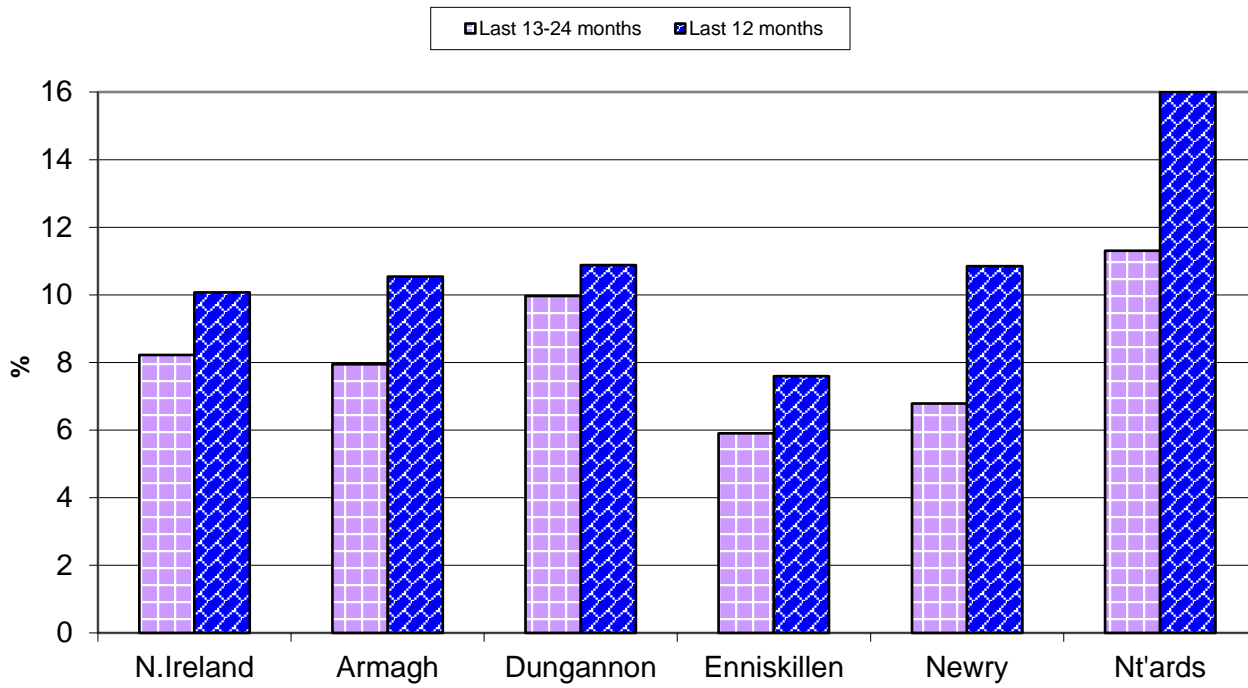
^ numerator includes all herds that had confirmed TB within the 12 month period

### Annual confirmed TB herd prevalence by DVO (Northern Region)



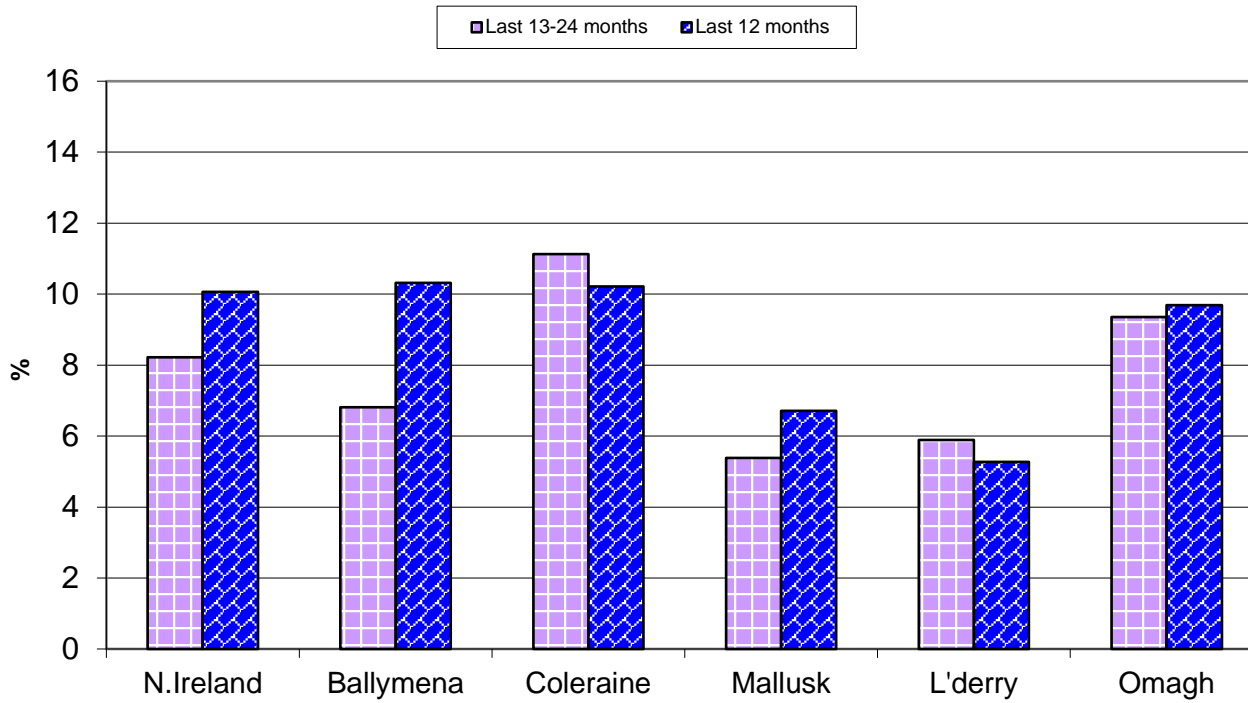
^ numerator includes all herds that had confirmed TB within the 12 month period

### Annual confirmed TB herd prevalence^ by DVO (Southern Region)



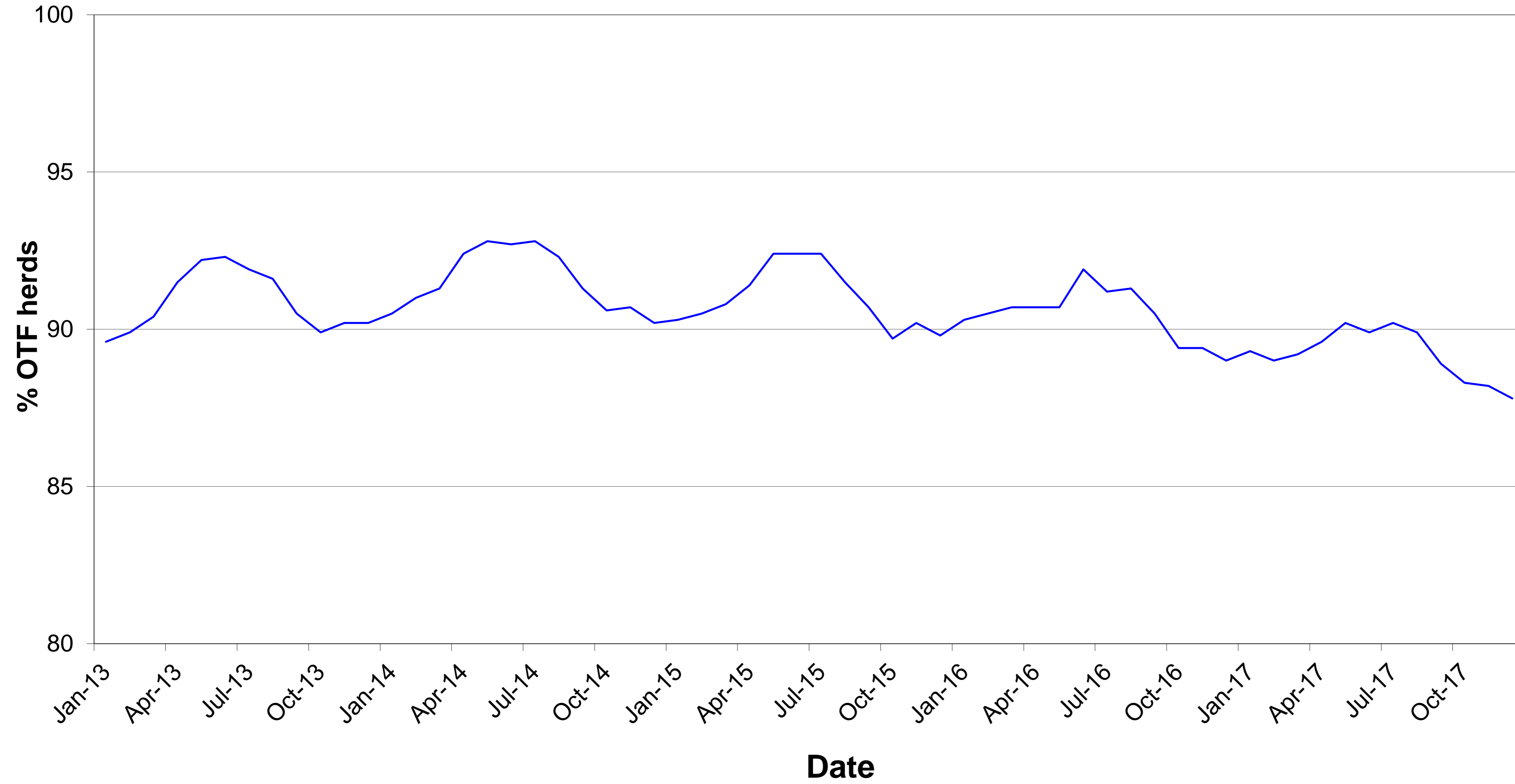
^ numerator includes all herds that had confirmed TB within the 12 month period

### Annual confirmed TB herd prevalence^ by DVO (Northern Region)



^ numerator includes all herds that had confirmed TB within the 12 month period

# % herds that are officially tuberculosis free (OTF herds)



**Month = December 2017**

Ref.	Total	Armagh	Ballymena	Coleraine	Dungannon	Enniskillen	Mallusk	L'derry	Newry	Nt'ards	Omagh	
d1	<b>No. of herds with TB reactors during month</b>	<b>358</b>	<b>33</b>	<b>21</b>	<b>38</b>	<b>65</b>	<b>36</b>	<b>23</b>	<b>6</b>	<b>60</b>	<b>30</b>	<b>46</b>
d2	<b>No. of new reactor herds during month</b>	<b>199</b>	<b>19</b>	<b>14</b>	<b>18</b>	<b>36</b>	<b>20</b>	<b>17</b>	<b>4</b>	<b>24</b>	<b>16</b>	<b>31</b>
d3	No. of new reactor herds since start of year	<b>2208</b>	214	158	239	292	246	120	39	365	245	290
d4	No. of new reactor herds in the previous 12 months	<b>2208</b>	214	158	239	292	246	120	39	365	245	290
d26	No. of new reactor herds in the previous 13-24 months	<b>1739</b>	189	88	223	249	201	73	30	238	206	242
d5	<b>No. of TB reactor animals during month</b>	<b>1255</b>	<b>108</b>	<b>64</b>	<b>98</b>	<b>236</b>	<b>172</b>	<b>74</b>	<b>14</b>	<b>275</b>	<b>62</b>	<b>152</b>
d6	No. of TB reactor animals since start of year	<b>15949</b>	1499	739	1439	2162	2530	627	159	3353	1852	1589
d7	No. of reactor animals in the previous 12 months	<b>15949</b>	1499	739	1439	2162	2530	627	159	3353	1852	1589
d27	No. of reactor animals in the previous 13-24 months	<b>11924</b>	994	285	1320	1602	1863	403	161	1779	1632	1885
d20	<b>Cumulative herd incidence in year (%)</b>	<b>9.61</b>	9.33	11.55	9.53	10.45	8.24	7.59	4.41	9.80	12.96	9.83
d9	<b>Annual herd incidence over the last 12 months (%)</b>	<b>9.61</b>	9.33	11.55	9.53	10.45	8.24	7.59	4.41	9.80	12.96	9.83
d28	<b>Annual herd incidence over the last 13-24 months (%)</b>	<b>7.45</b>	8.23	6.34	8.72	8.77	6.58	4.52	3.41	6.35	10.62	8.01
d11	<b>2016 Herd Incidence (%)</b>	<b>7.45</b>	8.23	6.34	8.72	8.77	6.58	4.52	3.41	6.35	10.62	8.01
d38	<b>2015 Herd Incidence (%)</b>	<b>7.15</b>	6.29	6.21	9.31	6.75	6.41	5.26	8.59	6.54	8.92	7.77
d30	<b>2014 Herd Incidence (%)</b>	<b>6.03</b>	4.84	7.24	7.71	5.02	5.48	5.24	4.83	5.55	8.03	6.62
d16	<b>2013 Herd Incidence (%)</b>	<b>6.44</b>	6.66	8.94	6.72	4.41	6.06	5.85	3.55	6.72	8.86	6.51
d10	<b>2012 Herd Incidence (%)</b>	<b>7.34</b>	6.15	5.19	7.88	5.55	7.34	5.67	5.87	7.04	11.33	9.61
d21	<b>Cumulative animal incidence in year (%)</b>	<b>0.911</b>	0.785	0.587	0.610	1.002	1.453	0.411	0.238	1.325	0.956	0.717
d12	<b>Annual animal incidence over the last 12 months (%)</b>	<b>0.911</b>	0.785	0.587	0.610	1.002	1.453	0.411	0.238	1.325	0.956	0.717
d29	<b>Annual animal incidence over the last 13-24 months (%)</b>	<b>0.698</b>	0.539	0.237	0.567	0.766	1.092	0.271	0.238	0.731	0.884	0.857
d14	<b>2016 Animal Incidence (%)</b>	<b>0.697</b>	0.539	0.237	0.567	0.765	1.092	0.269	0.238	0.731	0.885	0.857
d39	<b>2015 Animal Incidence (%)</b>	<b>0.661</b>	0.504	0.310	0.486	0.612	0.707	0.256	0.661	0.848	0.889	0.855
d31	<b>2014 Animal Incidence (%)</b>	<b>0.550</b>	0.350	0.349	0.476	0.364	0.786	0.244	0.199	0.815	0.781	0.551

d15	<b>2013 Animal Incidence (%)</b>	<b>0.510</b>	0.476	0.652	0.324	0.323	0.742	0.214	0.112	0.634	0.741	0.474
d13	<b>2012 Animal Incidence (%)</b>	<b>0.663</b>	0.473	0.198	0.419	0.459	1.133	0.439	0.232	0.754	0.875	0.938
d34	<b>APT during current month</b>	<b>3.94</b>	3.32	2.51	2.69	6.07	5.39	2.13	1.53	7.42	1.71	4.25
d22	<b>APT since start of year</b>	<b>5.07</b>	4.57	3.40	3.31	5.89	8.74	2.78	1.73	7.57	5.00	4.24
d17	<b>Current 12 month moving average APT</b>	<b>5.07</b>	4.57	3.40	3.31	5.89	8.74	2.78	1.73	7.57	5.00	4.24
d42	<b>2016 APT</b>	<b>4.23</b>	3.45	1.63	3.14	4.99	7.28	1.98	1.72	4.62	5.20	5.20
d40	<b>2015 APT</b>	<b>4.06</b>	3.37	2.08	2.80	4.31	4.46	1.88	4.51	5.33	5.06	5.38
d32	<b>2014 APT</b>	<b>3.55</b>	2.39	2.18	3.24	2.78	5.24	1.79	1.58	5.08	4.64	3.65
d18	<b>2013 APT</b>	<b>3.27</b>	3.14	4.53	2.20	2.42	4.90	1.64	0.86	3.87	4.33	3.05
d19	<b>2012 APT</b>	<b>4.21</b>	3.17	1.52	2.90	3.37	7.17	3.37	1.68	4.57	4.92	5.67
d23	<b>No. negative in contacts since start of year</b>	<b>891</b>	92	14	189	43	83	50	1	242	74	103
d46	<b>No. negative in contacts over last 12 months</b>	<b>891</b>	92	14	189	43	83	50	1	242	74	103
d43	<b>No. negative in contacts during 2016</b>	<b>579</b>	37	11	78	24	105	8	57	17	63	179
d41	<b>No. negative in contacts during 2015</b>	<b>755</b>	59	10	23	62	37	45	9	73	95	342
d33	<b>No. negative in contacts during 2014</b>	<b>1060</b>	40	10	100	227	93	29	9	201	35	316
d24	<b>No. negative in contacts during 2013</b>	<b>565</b>	44	74	3	18	83	22	0	49	35	237
d25	<b>No. negative in contacts during 2012</b>	<b>1394</b>	9	0	23	35	79	611	1	133	55	448
d37	<b>Reactor removal time 2017</b>	<b>9.6</b>	11.6	8.2	8.2	11.5	9.6	9.6	8.2	11.6	11.6	8.2
D44	<b>Reactor removal time 2016</b>	<b>8.9</b>	11.0	8.9	8.2	8.2	8.9	8.9	8.2	8.9	8.2	8.2
d36	<b>Reactor removal time 2015</b>	<b>8.9</b>	9.6	9.6	8.9	8.9	8.2	8.9	8.2	9.6	9.6	8.2
d45	<b>Reactor removal time 2014</b>	<b>8.9</b>	9.6	8.9	8.9	8.9	8.9	8.9	8.2	10.3	8.9	8.2
d35	<b>Reactor removal time 2013</b>	<b>8.9</b>	9.6	8.9	8.2	9.6	8.9	9.6	8.9	9.6	9.6	8.2
d47	<b>Reactor removal time 2012</b>	<b>11.6</b>	12.3	12.3	9.6	12.3	10.3	10.3	8.9	11.6	11.6	8.9

### **Tuberculosis: number of reactor herds by month and by DVO in 2017 and unique herd breakdowns during the year**

2017		DVO_CODE										
Year	Month	Armagh	Ballymena	Coleraine	Dungannon	Enniskillen	L'Derry	Mallusk	Newry	Nt'Ards	Omagh	Total
2017	1	31	22	24	32	20	7	9	38	22	29	234
2017	2	15	16	19	19	22	2	11	33	20	16	173
2017	3	19	15	27	30	21	1	17	38	28	29	225
2017	4	19	13	27	23	24	2	9	27	26	28	198
2017	5	11	8	24	15	17	2	7	34	16	20	154
2017	6	9	8	18	25	16	1	4	20	24	16	141
2017	7	11	7	9	9	8	3	4	29	15	18	113
2017	8	21	16	5	23	20	1	5	24	20	8	143
2017	9	22	12	20	18	30	3	6	24	15	21	171
2017	10	16	18	17	20	26	4	15	27	26	32	201
2017	11	21	9	31	42	22	9	16	47	17	42	256
2017	12	19	14	18	36	20	4	17	24	16	31	199
Total		214	158	239	292	246	39	120	365	245	290	2208

Unique Herd Breakdowns		DVO_CODE										
Year	Armagh	Ballymena	Coleraine	Dungannon	Enniskillen	L'Derry	Mallusk	Newry	Nt'Ards	Omagh	Total Herds	
2017	286	179	317	391	302	46	136	487	336	369	2849	

### **Tuberculosis: number of reactor herds by month and by DVO in 2016 and unique herd breakdowns during the year**

2016		DVO_CODE										
Year	Month	Armagh	Ballymena	Coleraine	Dungannon	Enniskillen	L'Derry	Mallusk	Newry	Nt'Ards	Omagh	Total
2016	1	17	14	26	24	17	3	16	19	15	35	186
2016	2	15	8	16	24	14	1	8	9	11	16	122
2016	3	18	9	25	28	15	1	1	19	16	18	150
2016	4	25	12	29	17	24	2	8	26	10	35	188
2016	5	8	3	14	22	16	2	0	13	12	12	102
2016	6	8	5	14	15	11	2	2	9	17	9	92
2016	7	6	3	9	11	16	1	0	19	16	8	89
2016	8	10	1	14	12	11	0	1	13	19	13	94
2016	9	17	6	14	18	15	1	0	23	15	14	123
2016	10	20	7	19	26	17	3	5	21	20	28	166
2016	11	19	13	16	31	16	8	15	28	25	25	196
2016	12	26	7	27	21	29	6	17	39	30	29	231
Total		189	88	223	249	201	30	73	238	206	242	1739

Unique Herd Breakdowns		DVO_CODE										
Year	Armagh	Ballymena	Coleraine	Dungannon	Enniskillen	L'Derry	Mallusk	Newry	Nt'Ards	Omagh	Total Herds	
2016	231	111	319	322	236	49	93	311	249	325	2246	

### **Tuberculosis: number of reactor herds by month and by DVO in 2015 and unique herd breakdowns during the year**

2015		DVO_CODE										
Year	Month	Armagh	Ballymena	Coleraine	Dungannon	Enniskillen	L'Derry	Mallusk	Newry	Nt'Ards	Omagh	Total
2015	1	18	17	36	25	19	8	13	21	21	36	214
2015	2	8	15	31	13	19	4	8	22	23	28	171
2015	3	14	6	24	12	18	2	6	24	12	16	134
2015	4	16	9	22	18	26	5	5	23	17	17	158
2015	5	9	3	13	10	20	5	6	16	10	13	105
2015	6	8	2	9	12	15	4	5	7	10	8	80
2015	7	8	2	10	10	12	11	3	25	12	7	100
2015	8	8	7	12	8	10	3	4	26	17	5	100
2015	9	6	4	12	20	12	8	3	13	9	11	98
2015	10	19	6	26	23	17	11	5	29	13	35	184
2015	11	15	7	29	24	22	5	15	20	15	33	185
2015	12	16	10	19	19	10	9	14	19	14	29	159
Total		145	88	243	194	200	75	87	245	173	238	1688

Unique Herd Breakdowns		DVO_CODE										
Year	Armagh	Ballymena	Coleraine	Dungannon	Enniskillen	L'Derry	Mallusk	Newry	Nt'Ards	Omagh	Total Herds	
2015	180	106	318	240	243	84	100	309	224	292	2096	

**A herd is defined as being a TB reactor herd if it had at least one TB reactor animal in that month and no TB reactor animals during the previous 12 months.**

**A TB unique herd breakdown is defined as a herd which has had at least one TB reactor during the specified calendar year irrespective of any TB reactors during the previous calendar year.**

**Tuberculosis: number of reactor animals by month and by DVO 2017**

2017		DVO_CODE										
Year	Month	Armagh	Ballymena	Coleraine	Dungannon	Enniskillen	L'Derry	Mallusk	Newry	Nt'Ards	Omagh	Total
2017	1	266	73	113	145	219	34	23	323	241	135	1572
2017	2	82	59	129	109	200	3	47	298	180	122	1229
2017	3	238	52	150	154	193	30	156	285	179	146	1583
2017	4	193	33	102	154	191	6	42	203	169	132	1225
2017	5	54	81	133	100	121	2	28	254	92	89	954
2017	6	34	26	211	146	184	4	15	272	167	93	1152
2017	7	111	34	91	88	232	12	54	233	169	108	1132
2017	8	45	145	67	220	279	2	42	236	187	84	1307
2017	9	152	55	144	161	219	14	37	306	125	168	1381
2017	10	122	52	99	200	304	8	36	346	123	133	1423
2017	11	94	65	102	449	216	30	73	322	158	227	1736
2017	12	108	64	98	236	172	14	74	275	62	152	1255
Total		1499	739	1439	2162	2530	159	627	3353	1852	1589	15949

**Tuberculosis: number of reactor animals by month and by DVO 2016**

2016		DVO_CODE										
Year	Month	Armagh	Ballymena	Coleraine	Dungannon	Enniskillen	L'Derry	Mallusk	Newry	Nt'Ards	Omagh	Total
2016	1	106	41	171	169	100	27	42	140	175	246	1217
2016	2	65	20	77	156	106	17	50	129	72	166	858
2016	3	73	39	75	107	109	11	14	151	74	148	801
2016	4	94	39	191	130	158	19	50	159	106	272	1218
2016	5	76	11	95	90	180	2	29	66	178	133	860
2016	6	23	15	46	62	90	10	16	61	78	57	458
2016	7	72	21	54	70	134	8	35	145	180	67	786
2016	8	98	10	88	99	143	0	17	128	115	129	827
2016	9	64	21	88	94	89	11	14	143	133	218	875
2016	10	129	24	118	185	234	19	15	217	120	192	1253
2016	11	92	23	160	332	189	17	60	186	213	117	1389
2016	12	102	21	157	108	331	20	61	254	188	140	1382
Total		994	285	1320	1602	1863	161	403	1779	1632	1885	11924

**Tuberculosis: number of reactor animals by month and by DVO 2015**

2015		DVO_CODE										
Year	Month	Armagh	Ballymena	Coleraine	Dungannon	Enniskillen	L'Derry	Mallusk	Newry	Nt'Ards	Omagh	Total
2015	1	85	78	130	98	129	22	33	125	209	245	1154
2015	2	45	80	116	45	87	29	44	198	132	175	951
2015	3	46	19	120	52	64	7	49	108	59	142	666
2015	4	71	28	83	215	126	39	14	223	141	94	1034
2015	5	51	12	46	45	94	42	33	95	84	150	652
2015	6	94	9	30	40	75	22	10	152	59	51	542
2015	7	19	27	75	170	68	78	40	182	115	124	898
2015	8	150	18	86	52	75	10	10	184	219	29	833
2015	9	22	25	112	91	133	66	32	111	117	165	874
2015	10	92	24	132	120	101	54	11	171	144	171	1020
2015	11	110	24	120	137	123	30	66	175	245	215	1245
2015	12	88	24	70	165	124	48	30	240	82	264	1135
Total		873	368	1120	1230	1199	447	372	1964	1606	1825	11004

**A TB reactor animal is defined as an animal where the manual interpretation field for a skin test is positive ('P') with the first test date being taken as the time at which the animal became a reactor. Animals with lesions at routine slaughter ('LRS') are not taken into account.**



**Month = December 2017**

Ref.		<b>Total</b>	<b>Armagh</b>	<b>Ballymena</b>	<b>Coleraine</b>	<b>Dungannon</b>	<b>Enniskillen</b>	<b>Mallusk</b>	<b>L'derry</b>	<b>Newry</b>	<b>Nt'ards</b>	<b>Omagh</b>
b16	<b>No. herds with any test completed in month</b>	<b>3811</b>	<b>398</b>	<b>269</b>	<b>382</b>	<b>517</b>	<b>477</b>	<b>345</b>	<b>129</b>	<b>517</b>	<b>334</b>	<b>443</b>
b17	No. herds with any test, from start of year	23067	2300	1374	2520	2805	2994	1591	889	3736	1896	2962
b29	All herds with any test, from start of year	23847	2328	1431	2635	2921	3076	1662	933	3814	1949	3098
b18	No. herds with any test, from start of year (no cattle)	780	28	57	115	116	82	71	44	78	53	136
b19	<b>No. herds with herd test completed in month</b>	<b>3493</b>	<b>340</b>	<b>250</b>	<b>359</b>	<b>460</b>	<b>439</b>	<b>321</b>	<b>111</b>	<b>488</b>	<b>320</b>	<b>405</b>
b20	No. herds with herd test, from start of year	22978	2293	1368	2507	2794	2986	1581	884	3725	1891	2949
b30	All herds with herd test, from start of year	23771	2322	1426	2624	2912	3070	1653	928	3805	1944	3087
b21	No. herds with herd test, from start of year (no cattle)	793	29	58	117	118	84	72	44	80	53	138
b22	No. herds with herd test during last 12 months	22978	2293	1368	2507	2794	2986	1581	884	3725	1891	2949
b31	No. herds with herd test during last 13-24 months	23345	2297	1387	2557	2840	3057	1615	881	3750	1940	3021
b24	No. herds with herd test during 2016	23345	2297	1387	2557	2840	3057	1615	881	3750	1940	3021
b39	No. herds with herd test during 2015	23604	2304	1417	2610	2875	3121	1654	873	3748	1939	3063
b32	No. herds with herd test during 2014	23149	2274	1395	2490	2829	3049	1621	890	3658	1892	3051
b28	No. herds with herd test during 2013	22979	2237	1353	2530	2833	3054	1590	873	3618	1863	3028
b23	No. herds with herd test during 2012	23093	2244	1369	2513	2831	3067	1623	869	3638	1880	3059
b25	<b>No. herds with any risk test completed</b>	<b>12725</b>	<b>1353</b>	<b>821</b>	<b>1450</b>	<b>1573</b>	<b>1641</b>	<b>714</b>	<b>324</b>	<b>2004</b>	<b>1151</b>	<b>1694</b>
b26	<b>No. herds with herd risk test completed</b>	<b>10158</b>	<b>986</b>	<b>655</b>	<b>1186</b>	<b>1182</b>	<b>1460</b>	<b>488</b>	<b>211</b>	<b>1618</b>	<b>942</b>	<b>1430</b>
b27	<b>No. herds with restricted herd test completed</b>	<b>3948</b>	<b>439</b>	<b>230</b>	<b>441</b>	<b>528</b>	<b>388</b>	<b>198</b>	<b>85</b>	<b>683</b>	<b>484</b>	<b>472</b>

**Month = December 2017**

Ref	Total	Armagh	Ballymena	Coleraine	Dungannon	Enniskillen	Mallusk	L'derry	Newry	Nt'ards	Omagh	
c1	<b>Total number of tests in current month</b>	<b>4616</b>	<b>535</b>	<b>301</b>	<b>447</b>	<b>631</b>	<b>538</b>	<b>424</b>	<b>159</b>	<b>656</b>	<b>388</b>	<b>537</b>
c2	Total number of tests from start of year	49067	5575	2992	5452	6464	5570	3276	1495	7830	4470	5943
c3	No. tests during the same time period in the previous year	45442	5006	2497	5345	5935	5226	2998	1517	6977	4020	5921
c4	% change between years	7.4	10.2	16.5	2.0	8.2	6.2	8.5	-1.5	10.9	10.1	0.4
c5	No. tests in the previous 12 months	49067	5575	2992	5452	6464	5570	3276	1495	7830	4470	5943
c6	<b>No. animal tests in current month</b>	<b>318266</b>	<b>32525</b>	<b>25478</b>	<b>36421</b>	<b>38875</b>	<b>31939</b>	<b>34799</b>	<b>9180</b>	<b>37052</b>	<b>36209</b>	<b>35788</b>
c7	No. animal tests from start of year	3142995	327911	217402	435357	366792	289328	225788	92058	443173	370733	374453
c8	No. animal tests during the same time period in the previous year	2816730	288268	174368	420041	320918	255899	202219	93515	384937	314122	362443
c9	% change between years	10.4	12.1	19.8	3.5	12.5	11.6	10.4	-1.6	13.1	15.3	3.2
c10	No. animal tests in previous 12 months	3142995	327911	217402	435357	366792	289328	225788	92058	443173	370733	374453
c11	No. cattle herds eligible for TB testing	25733	2564	1545	2808	3093	3290	1835	1006	4132	2135	3325
c12	No. cattle eligible for TB testing	1590936	159664	111461	208716	179845	155521	136977	61355	213641	166604	197152
c13	<b>No. restricted herd tests during month</b>	<b>686</b>	<b>78</b>	<b>51</b>	<b>63</b>	<b>103</b>	<b>75</b>	<b>43</b>	<b>6</b>	<b>107</b>	<b>87</b>	<b>73</b>
c14	No. animals tested	110546	13015	8924	12384	15351	9522	7179	1835	15452	14386	12498
c15	<b>No. herd tests during month</b>	<b>3494</b>	<b>340</b>	<b>250</b>	<b>359</b>	<b>461</b>	<b>439</b>	<b>321</b>	<b>111</b>	<b>488</b>	<b>320</b>	<b>405</b>
c16	No. animals tested	315869	32185	25337	36275	38580	31690	34358	9073	36771	36077	35523
c17	<b>No. individual tests during month</b>	<b>1122</b>	<b>195</b>	<b>51</b>	<b>88</b>	<b>170</b>	<b>99</b>	<b>103</b>	<b>48</b>	<b>168</b>	<b>68</b>	<b>132</b>
c18	No. animals tested	2397	340	141	146	295	249	441	107	281	132	265
c23	<b>No. animals TB tested since start of year</b>	<b>1750170</b>	<b>190842</b>	<b>125843</b>	<b>235774</b>	<b>215867</b>	<b>174063</b>	<b>152684</b>	<b>66667</b>	<b>253109</b>	<b>193787</b>	<b>221579</b>
c19	No. animals TB tested in previous 12 months	1750170	190842	125843	235774	215867	174063	152684	66667	253109	193787	221579
c24	No. animals TB tested in previous 13-24 months	1709508	184410	120059	232831	209246	170575	148773	67744	243436	184600	219947
c21	No. animals TB tested in 2016	1709508	184410	120059	232831	209246	170575	148773	67744	243436	184600	219947
c26	No. animals TB tested in 2015	1662355	173129	118652	230608	200883	169615	144926	67583	230622	180647	213478
c25	No. animals TB tested in 2014	1607660	166774	117083	214490	191534	163019	143992	61765	225643	177960	207187
c22	No. animals TB tested in 2013	1620055	172322	114133	214509	197072	166287	140842	62228	224389	180893	210490
c20	No. animals TB tested in 2012	1643626	171497	112484	213785	196069	168531	143005	64217	229674	181839	219225

**Month = December 2017**

Ref		<b>Total</b>	<b>Armagh</b>	<b>Ballymena</b>	<b>Coleraine</b>	<b>Dungannon</b>	<b>Enniskillen</b>	<b>Mallusk</b>	<b>L'derry</b>	<b>Newry</b>	<b>Nt'ards</b>	<b>Omagh</b>
f1	No. of Officially Tuberculosis Free Herds (OTF)	<b>26094</b>	2597	1579	2940	3145	3278	1948	1151	4111	1893	3452
f2	No. of Officially Tuberculosis Suspended Herds (OTS)	<b>1630</b>	195	76	199	153	135	166	47	297	212	150
f3	No. of Officially Tuberculosis Withdrawn Herds (OTW)	<b>1987</b>	219	104	175	269	193	133	29	384	248	233
f4	% herds that are OTF	<b>87.8</b>	86.3	89.8	88.7	88.2	90.9	86.7	93.8	85.8	80.5	90.0
f5	% herds that are OTS	<b>5.5</b>	6.5	4.3	6.0	4.3	3.7	7.4	3.8	6.2	9.0	3.9
f6	% herds that are OTW	<b>6.7</b>	7.3	5.9	5.3	7.5	5.4	5.9	2.4	8.0	10.5	6.1

		<b>Month = August 2017</b>										
		<b>(Data lagged by 4 months)</b>										
Ref		<b>Total</b>	<b>Armagh</b>	<b>Ballymena</b>	<b>Coleraine</b>	<b>Dungannon</b>	<b>Enniskillen</b>	<b>Mallusk</b>	<b>L'derry</b>	<b>Newry</b>	<b>Nt'ards</b>	<b>Omagh</b>
e19	Num. TB culture positive animals that were not TB reactors in last 12 months	790	88	41	79	105	36	47	16	193	122	63
e20	Num. TB culture positive animals that were not TB reactors in last 13-24 months	691	76	39	96	108	35	34	14	124	111	54
e4	Num. TB culture positive animals that were not TB reactors in 2016	714	64	35	89	101	36	34	13	173	104	65
e5	Num. TB culture positive animals that were not TB reactors in 2015	676	71	41	95	84	27	38	18	120	112	70
e6	Num. TB culture positive animals that were not TB reactors in 2014	575	68	37	54	66	38	53	12	100	80	67
e2	Num. TB culture positive animals that were not TB reactors in 2013	583	63	33	32	98	28	30	7	131	92	69
e3	Num. TB culture positive animals that were not TB reactors in 2012	600	62	32	48	66	32	31	9	155	91	74
e21	No. herds with TB culture positive animals that were not TB reactors in last 12 months	474	51	30	46	67	26	34	14	102	69	35
e22	No. herds with TB culture positive animals that were not TB reactors in last 13-24 months	460	48	20	61	66	25	30	9	80	74	47
e10	No. herds with TB culture positive animals that were not TB reactors in 2016	469	45	21	57	63	26	31	11	100	68	47
e11	No. herds with TB culture positive animals that were not TB reactors in 2015	449	50	25	70	55	20	27	12	67	78	45
e12	No. herds with TB culture positive animals that were not TB reactors in 2014	372	47	25	37	48	27	27	10	66	51	34
e8	No. herds with TB culture positive animals that were not TB reactors in 2013	381	50	14	30	46	20	20	5	83	60	53
e9	No. herds with TB culture positive animals that were not TB reactors in 2012	401	46	17	35	48	25	23	9	82	67	49
e10	No. herds with TB culture positive animals that were not TB reactors in 2011	363	48	17	31	32	27	17	3	87	56	45
e23	% of TB animals that were TB culture positive that were not TB reactors in last 12 months	5.0	5.9	6.5	4.9	5.4	1.4	7.8	9.1	6.2	5.6	3.8
e24	% of TB animals that were TB culture positive that were not TB reactors in last 13-24 months	5.8	7.6	11.7	7.2	7.2	2.3	8.0	4.6	6.9	6.6	2.6
e16	% of TB animals that were TB culture positive that were not TB reactors in 2016	5.7	6.0	10.9	6.3	5.9	1.9	7.8	7.5	8.9	6.0	3.3
e17	% of TB animals that were TB culture positive that were not TB reactors in 2015	5.8	7.5	10.0	7.8	6.4	2.2	9.3	3.9	5.8	6.5	3.7
e18	% of TB animals that were TB culture positive that were not TB reactors in 2014	6.1	10.4	8.3	5.0	8.7	2.9	13.1	8.9	5.2	5.4	5.5
e14	% of TB animals that were TB culture positive that were not TB reactors in 2013	6.6	7.1	4.2	4.4	13.4	2.2	9.0	9.1	8.4	6.4	6.5
e15	% of TB animals that were TB culture positive that were not TB reactors in 2012	5.2	7.1	12.5	5.1	6.8	1.6	4.7	5.7	8.2	5.4	3.5
e16	% of TB animals that were TB culture positive that were not TB reactors in 2011	6.4	7.9	12.2	6.6	7.5	3.3	12.8	4.0	7.2	4.2	6.7

		<b>Month = August 2017</b>										
Ref	(Data lagged by 4 months)	<b>Total</b>	<b>Armagh</b>	<b>Ballymena</b>	<b>Coleraine</b>	<b>Dungannon</b>	<b>Enniskillen</b>	<b>Mallusk</b>	<b>L'derry</b>	<b>Newry</b>	<b>Nt'ards</b>	<b>Omagh</b>
g31	No. of confirmed TB reactors during last 12 months	6905	642	317	835	839	1017	296	85	1125	973	776
g32	No. of confirmed TB reactors during last 13-24 months	4916	399	160	666	669	523	168	190	589	709	843
g4	No. of confirmed TB reactors 2016	5339	429	145	714	807	759	174	98	622	801	790
g5	No. of confirmed TB reactors 2015	5306	428	228	658	591	561	194	284	784	718	860
g6	No. of confirmed TB reactors 2014	4346	294	229	591	392	561	156	84	725	722	592
g2	No. of confirmed TB reactors 2013	3765	377	422	373	255	520	116	40	541	636	485
g3	No. of confirmed TB reactors 2012	4836	339	131	416	429	821	241	83	698	730	948
g33	Total animals with confirmed TB during last 12 months	7695	730	358	914	944	1053	343	101	1318	1095	839
g34	Total animals with confirmed TB in last 13-24 months	5607	475	199	762	777	558	202	204	713	820	897
g10	Total animals with confirmed TB in 2016	6053	493	180	803	908	795	208	111	795	905	855
g11	Total animals with confirmed TB in 2015	5982	499	269	753	675	588	232	302	904	830	930
g12	Total animals with confirmed TB in 2014	4921	362	266	645	458	599	209	96	825	802	659
g8	Total animals with confirmed TB in 2013	4348	440	455	405	353	548	146	47	672	728	554
g9	Total animals with confirmed TB in 2012	5436	401	163	464	495	853	272	92	853	821	1022
g35	Confirmed TB animal prevalence in last 12 months (%)	0.445	0.392	0.292	0.391	0.449	0.615	0.230	0.153	0.527	0.574	0.380
g36	Confirmed TB animal prevalence in last 13-24 months (%)	0.332	0.269	0.167	0.329	0.377	0.332	0.139	0.302	0.300	0.455	0.413
g16	Confirmed TB animal prevalence in 2016 (%)	0.354	0.267	0.150	0.345	0.434	0.466	0.140	0.164	0.327	0.489	0.389
g17	Confirmed TB animal prevalence in 2015 (%)	0.360	0.288	0.226	0.326	0.336	0.347	0.160	0.447	0.392	0.459	0.436
g18	Confirmed TB animal prevalence in 2014 (%)	0.306	0.217	0.227	0.301	0.239	0.367	0.145	0.155	0.366	0.451	0.318
g14	Confirmed TB animal prevalence in 2013 (%)	0.268	0.255	0.399	0.189	0.179	0.330	0.104	0.076	0.299	0.402	0.263
g15	Confirmed TB animal prevalence in 2012 (%)	0.331	0.234	0.145	0.217	0.252	0.506	0.190	0.143	0.371	0.452	0.466
g37	No. herds with confirmed TB in last 12 months	2338	243	143	261	306	229	109	47	405	306	289
g38	No. herds with confirmed TB in last 13-24 months	1932	184	96	287	286	181	89	52	254	220	283
g22	No. herds with confirmed TB in 2016	2045	205	99	281	293	198	87	45	297	247	293
g23	No. herds with confirmed TB in 2015	1936	163	103	296	222	201	101	77	272	228	273
g24	No. herds with confirmed TB in 2014	1606	126	123	199	171	181	85	50	253	195	223
g20	No. herds with confirmed TB in 2013	1648	157	120	174	144	210	77	29	293	206	238
g21	No. herds with confirmed TB in 2012	1739	148	69	183	161	223	77	52	292	230	304
g39	Confirmed TB herd prevalence in last 12 months (%)	10.07	10.54	10.32	10.22	10.88	7.59	6.71	5.27	10.85	16.00	9.69
g40	Confirmed TB herd prevalence in last 13-24 months (%)	8.22	7.94	6.81	11.13	9.96	5.90	5.38	5.89	6.78	11.31	9.35

g28	Confirmed TB herd prevalence in 2016 (%)	8.76	8.92	7.14	10.99	10.32	6.48	5.39	5.11	7.92	12.73	9.70
g29	Confirmed TB herd prevalence in 2015 (%)	8.20	7.07	7.27	11.34	7.72	6.44	6.11	8.82	7.26	11.76	8.91
g30	Confirmed TB herd prevalence in 2014 (%)	6.94	5.54	8.82	7.99	6.04	5.94	5.24	5.62	6.92	10.31	7.31
g26	Confirmed TB herd prevalence in 2013 (%)	7.17	7.02	8.87	6.88	5.08	6.88	4.84	3.32	8.10	11.06	7.86
g27	Confirmed TB herd prevalence in 2012 (%)	7.53	6.60	5.04	7.28	5.69	7.27	4.74	5.98	8.03	12.23	9.94

### Explanatory Comments for Tuberculosis Statistics - B. Testing Herds

Ref	Data Title	Explanation
B16	No. herds with any test completed in month	Test of any disease status and size (herd or animal-level). Tests with no animals are excluded.
B17	No. herds with any test, from start of year	<b>Test of any disease status and size (herd or animal-level) carried out on a herd since 1st January. Tests with no animals are excluded.</b>
B29	All herds with any test, from start of year	Skin test of any disease status and size (herd or animal-level) carried out on a herd since 1st January. Tests with no animals are included.
B18	No. herds with any test, from start of year (no cattle)	Herd or individual test of any disease status (routine, risk or restricted) where no cattle were recorded at all such tests since 1st January.
B19	No. herds with herd test completed in month	Herd level test of any disease status (routine, risk or restricted) completed during the above month. Tests with no animals are excluded.
B20	No. herds with herd test, from start of year	<b>Herd level test of any disease status (routine, risk or restricted) completed since 1st January. Tests with no animals are excluded.</b>
B30	All herds with herd test, from start of year	Herd level test of any disease status (routine, risk or restricted) completed since 1st January. Tests with no animals are included.
B21	No. herds with herd test, from start of year (no cattle)	Herd level test of any disease status (routine, risk or restricted) where no cattle were recorded at all such herd tests since 1st January.
B22	No. herds with herd test during last 12 months	Herd level test of any disease status (routine, risk or restricted) completed in the 12 month period from the above month. Tests with no animals are excluded.
B31	No. herds with herd test during last 13-24 months	Herd level test of any disease status (routine, risk or restricted) completed in the 13-24 months from the above month. Tests with no animals are excluded.
B39	No. herds with herd test during the year	Herd level test of any disease status (routine, risk or restricted) completed in the calendar year. Tests with no animals are excluded.
B32	No. herds with herd test during the year	Herd level test of any disease status (routine, risk or restricted) completed in the calendar year. Tests with no animals are excluded.
B28	No. herds with herd test during the year	Herd level test of any disease status (routine, risk or restricted) completed in the calendar year. Tests with no animals are excluded.
B23	No. herds with herd test during the year	Herd level test of any disease status (routine, risk or restricted) completed in the calendar year. Tests with no animals are excluded.
B24	No. herds with herd test during the year	Herd level test of any disease status (routine, risk or restricted) completed in the calendar year. Tests with no animals are excluded.
B25	No. herds with any risk test completed	Herd has had a herd or individual level risk test since start of calendar year and number tested > 0.
B26	No. herds with herd risk test completed	Herd has had a herd level risk test since start of calendar year and number tested > 0.
B27	No. herds with restricted herd test completed	Herd has had a restricted herd test (RHT, RH1, RH2) since start of calendar year and number tested > 0.

### Explanatory Comments for Tuberculosis Statistics - C. Testing Animals

Ref	Data Title	Explanation
C1	Total number of tests in current month	Number of herds and individual tests performed in the month stated above. Tests with no animals are excluded.
C2	Total number of tests from start of year	<b>From 1st January. Tests with no animals are excluded.</b>
C3	No. tests during the same time period in the previous year	From 1st January of previous year. Tests with no animals are excluded.
C4	% change between years	<b>Difference between the number of tests carried out during the current year and the number carried out in the previous expressed as a percentage.</b>
C5	No. tests in the previous 12 months	Last 12 month period from the above month. Tests with no animals are excluded.
C6	No. animal tests in current month	Animal test = a count of the number of animals tested within each herd or individual test. Some animals may have been tested multiple times during the year.
C7	No. animal tests from start of year	Number of animal tests carried out since 1st January.
C8	No. animal tests during the same time period in the previous year	Number of animal tests carried out from 1st January in the previous year over the same time interval as recorded for the current year.
C9	% change between years	Difference between the number of animal tests during the current year and the number carried out in the previous expressed as a percentage.
C10	No. animal tests in previous 12 months	Last 12 month period from the above month.
C11	No. cattle eligible for TB testing	Based on the average number of animals presented at TB herd tests over last 4 years.
C12	No. cattle herds eligible for TB testing	Based on cattle being presented for a TB herd tests over last 4 years. Herds with '0' cattle are excluded.

<b>C13</b>	<b>No. restricted herd tests during month</b>	All restricted herd tests (RHT, RH1 and RH2) carried out during the above month.
<b>C14</b>	<b>No. animals tested</b>	Total of the animals reported as being tested within restricted herd tests (RHT, RH1, RH2) during the above month.
<b>C15</b>	<b>No. herd tests during month</b>	Total of the animals reported as being tested within all herd tests during the above month.
<b>C16</b>	<b>No. animals tested</b>	Total of the animals reported as being tested within all herd tests during the above month.
<b>C17</b>	<b>No. individual tests during month</b>	Total of the animals reported as being tested within all individual tests during the above month.
<b>C18</b>	<b>No. animals tested</b>	Total of the animals reported as being tested within all individual tests during the above month.
<b>C23</b>	<b>No. animals TB tested since start of year</b>	Animals identified as having had at least one TB skin test since the start of the calendar year. Due to the same animals being sampled in different DVO areas, the 'Total' is not the sum of the DVO figures.
<b>C19</b>	<b>No. animals TB tested in previous 12 months</b>	Animals identified as having had at least one TB skin test during the last 12 month period from the above month. Due to the same animals being sampled in different DVO areas, the 'Total' is not the sum of the DVO figures.
<b>C24</b>	<b>No. animals TB tested in previous 13-24 months</b>	Animals identified as having had at least one TB skin test during the last 13-24 months from the above month. Due to the same animals being sampled in different DVO areas, the 'Total' is not the sum of the DVO figures.
<b>C26</b>	<b>No. animals TB tested in the year</b>	Animals identified as having had at least one TB skin test during the calendar year. Due to the same animals being sampled in different DVO areas, the 'Total' is not the sum of the DVO figures.
<b>C25</b>	<b>No. animals TB tested in the year</b>	Animals identified as having had at least one TB skin test during the calendar year. Due to the same animals being sampled in different DVO areas, the 'Total' is not the sum of the DVO figures.
<b>C22</b>	<b>No. animals TB tested in the year</b>	Animals identified as having had at least one TB skin test during the calendar year. Due to the same animals being sampled in different DVO areas, the 'Total' is not the sum of the DVO figures.
<b>C20</b>	<b>No. animals TB tested in the year</b>	Animals identified as having had at least one TB skin test during the calendar year. Due to the same animals being sampled in different DVO areas, the 'Total' is not the sum of the DVO figures.
<b>C21</b>	<b>No. animals TB tested in the year</b>	Animals identified as having had at least one TB skin test during the calendar year. Due to the same animals being sampled in different DVO areas, the 'Total' is not the sum of the DVO figures.
<b>Explanatory Comments for Tuberculosis Statistics - D. Results</b>		
<b>Ref</b>	<b>Data Title</b>	<b>Explanation</b>
<b>D1</b>	<b>No. of herds with TB reactors during month</b>	A herd is included in this figure if the herd number had a TB skin test reactor during the above month.
<b>D2</b>	<b>No. of new reactor herds during month</b>	A herd is defined as being a TB reactor herd if it had at least one TB reactor animal in that month and no TB reactor animals during the previous 12 months.
<b>D3</b>	<b>No. of new reactor herds since start of year</b>	= Since 1st January
<b>D4</b>	<b>No. of new reactor herds in the previous 12 months</b>	Last 12 month period from the above month.
<b>D26</b>	<b>No. of new reactor herds in previous 13-24 months</b>	Last 13-24 month period from the above month.
<b>D5</b>	<b>No. of TB reactor animals during month</b>	A TB reactor animal is defined as an animal where the manual interpretation field for a skin test is positive ('P') with the first test date being taken as the time at which the animal became a reactor. Currently animals with lesions at routine slaughter (*LRS*) are not taken into account.
<b>D6</b>	<b>No. of TB reactor animals since start of year</b>	= Since 1st January
<b>D7</b>	<b>No. of reactor animals in the previous 12 months</b>	Last 12 month period from the above month.
<b>D27</b>	<b>No. of reactor animals in previous 13-24 months</b>	Last 13-24 month period from the above month.
<b>D20</b>	<b>Cumulative herd incidence in year (%)</b>	Number of NEW reactor herds since the start of the calendar year as a proportion of cattle herds which have presented cattle for a TB herd test during the same time period.
<b>D9</b>	<b>Annual herd incidence over the last 12 months (%)</b>	Number of NEW reactor herds during the last 12 months as a proportion of cattle herds which have presented cattle for a TB herd test during the same time period.
<b>D28</b>	<b>Annual herd incidence over the last 13-24 months (%)</b>	Number of NEW reactor herds during the last 13-24 months as a proportion of cattle herds which have presented cattle for a TB herd test during the same time period.
<b>D38</b>	<b>In-year Herd Incidence (%)</b>	Number of NEW reactor herds during the year as a proportion of cattle herds which have presented cattle for a TB herd test during the same time period.
<b>D30</b>	<b>In-year Herd Incidence (%)</b>	Number of NEW reactor herds during the year as a proportion of cattle herds which have presented cattle for a TB herd test during the same time period.
<b>D16</b>	<b>In-year Herd Incidence (%)</b>	Number of NEW reactor herds during the year as a proportion of cattle herds which have presented cattle for a TB herd test during the same time period.
<b>D10</b>	<b>In-year Herd Incidence (%)</b>	Number of NEW reactor herds during the year as a proportion of cattle herds which have presented cattle for a TB herd test during the same time period.
<b>D11</b>	<b>In-year Herd Incidence (%)</b>	Number of NEW reactor herds during the year as a proportion of cattle herds which have presented cattle for a TB herd test during the same time period.
<b>D21</b>	<b>Cumulative animal incidence in year (%)</b>	Number of reactor animals during the above month as a proportion of cattle which have been presented for a TB test during the same time period.
<b>D12</b>	<b>Annual animal incidence over the last 12 months (%)</b>	Number of reactor animals during the last 12 months as a proportion of cattle which have been presented for a TB test during the same time period.
<b>D29</b>	<b>Annual animal incidence over the last 13-24 months (%)</b>	Number of reactor animals during the last 13-24 months as a proportion of cattle which have been presented for a TB test during the same time period.
<b>D39</b>	<b>In year Animal Incidence (%)</b>	Number of reactor animals during the year as a proportion of cattle which have been presented for a TB herd test during the same time period.



<b>D31</b>	<b>In year Animal Incidence (%)</b>	Number of reactor animals during the year as a proportion of cattle which have been presented for a TB herd test during the same time period.
<b>D15</b>	<b>In year Animal Incidence (%)</b>	Number of reactor animals during the year as a proportion of cattle which have been presented for a TB herd test during the same time period.
<b>D13</b>	<b>In year Animal Incidence (%)</b>	Number of reactor animals during the year as a proportion of cattle which have been presented for a TB herd test during the same time period.
<b>D14</b>	<b>In year Animal Incidence (%)</b>	Number of reactor animals during the year as a proportion of cattle which have been presented for a TB herd test during the same time period.
<b>D34</b>	<b>APT during current month</b>	= The reactor disclosure rate per 1,000 animal tests current calendar month.
<b>D22</b>	<b>APT since start of year</b>	The reactor disclosure rate per 1,000 animal tests since the start of the calendar year.
<b>D17</b>	<b>Current 12 month moving average APT</b>	The reactor disclosure rate per 1,000 animal tests. Current refers to the rate over the last 12 months.
<b>D42</b>	<b>In year APT</b>	The reactor disclosure rate per 1,000 animal tests during the calendar year.
<b>D40</b>	<b>In year APT</b>	The reactor disclosure rate per 1,000 animal tests during the calendar year.
<b>D32</b>	<b>In year APT</b>	The reactor disclosure rate per 1,000 animal tests during the calendar year.
<b>D18</b>	<b>In year APT</b>	The reactor disclosure rate per 1,000 animal tests during the calendar year.
<b>D19</b>	<b>In year APT</b>	The reactor disclosure rate per 1,000 animal tests during the calendar year.
<b>D23</b>	<b>No. negative in contacts since start of year</b>	Number of animals taken as negative in contacts since the start of the year.
<b>d46</b>	<b>No. Negative in contacts over last 12 months (%)</b>	= Number of negative in contacts during the last 12 months
<b>D43</b>	<b>No. negative in contacts during the year</b>	Number of animals taken as negative in contacts during the year.
<b>D41</b>	<b>No. negative in contacts during the year</b>	Number of animals taken as negative in contacts during the year.
<b>D33</b>	<b>No. negative in contacts during the year</b>	Number of animals taken as negative in contacts during the year.
<b>D24</b>	<b>No. negative in contacts during the year</b>	Number of animals taken as negative in contacts during the year.
<b>D25</b>	<b>No. negative in contacts during the year</b>	Number of animals taken as negative in contacts during the year.
<b>D37</b>	<b>Reactor removal time during the year</b>	Figures given are median values for working days estimated from calendar days (calendar days multiplied by 0.685). Reactors which are not yet slaughtered or where they they were first declared as reactors at slaughter are excluded.
<b>D45</b>	<b>Reactor removal time during the year</b>	Figures given are median values for working days estimated from calendar days (calendar days multiplied by 0.685). Reactors which are not yet slaughtered or where they they were first declared as reactors at slaughter are excluded.
<b>D35</b>	<b>Reactor removal time during the year</b>	Figures given are median values for working days estimated from calendar days (calendar days multiplied by 0.685). Reactors which are not yet slaughtered or where they they were first declared as reactors at slaughter are excluded.
<b>D44</b>	<b>Reactor removal time during the year</b>	Figures given are median values for working days estimated from calendar days (calendar days multiplied by 0.685). Reactors which are not yet slaughtered or where they they were first declared as reactors at slaughter are excluded.
<b>D36</b>	<b>Reactor removal time during the year</b>	Figures given are median values for working days estimated from calendar days (calendar days multiplied by 0.685). Reactors which are not yet slaughtered or where they they were first declared as reactors at slaughter are excluded.



<a href="#">g35</a>	Confirmed TB animal prevalence in last 12 months (%)	Number of TB reactors that were confirmed during the last 12 months by the presence of visible lesions at slaughter and/or by laboratory confirmation (histopathology and/or culture) plus the number of other animals where M. bovis was cultured from TB-like lesions found at slaughter during the last 12 months that were not identified as TB reactor animals divided by the number of animals tuberculin tested during the last 12 months expressed as a %
<a href="#">g36</a>	Confirmed TB animal prevalence in last 13-24 months (%)	Number of TB reactors that were confirmed during the last 13-24 months by the presence of visible lesions at slaughter and/or by laboratory confirmation (histopathology and/or culture) plus the number of other animals where M. bovis was cultured from TB-like lesions found at slaughter during the last 13-24 months that were not identified as TB reactor animals divided by the number of animals tuberculin tested during the last 13-24 months expressed as a %
<a href="#">g18</a>	Confirmed TB animal prevalence in year (%)	Number of TB reactors that were confirmed during the year by the presence of visible lesions at slaughter and/or by laboratory confirmation (histopathology and/or culture) plus the number of other animals where M. bovis was cultured from TB-like lesions found at slaughter during the year that were not identified as TB reactor animals divided by the number of animals tuberculin tested during the year expressed as a %
<a href="#">g14</a>	Confirmed TB animal prevalence in year (%)	Number of TB reactors that were confirmed during the year by the presence of visible lesions at slaughter and/or by laboratory confirmation (histopathology and/or culture) plus the number of other animals where M. bovis was cultured from TB-like lesions found at slaughter during the year that were not identified as TB reactor animals divided by the number of animals tuberculin tested during the year expressed as a %
<a href="#">g15</a>	Confirmed TB animal prevalence in year (%)	Number of TB reactors that were confirmed during the year by the presence of visible lesions at slaughter and/or by laboratory confirmation (histopathology and/or culture) plus the number of other animals where M. bovis was cultured from TB-like lesions found at slaughter during the year that were not identified as TB reactor animals divided by the number of animals tuberculin tested during the year expressed as a %
<a href="#">g16</a>	Confirmed TB animal prevalence in year (%)	Number of TB reactors that were confirmed during the year by the presence of visible lesions at slaughter and/or by laboratory confirmation (histopathology and/or culture) plus the number of other animals where M. bovis was cultured from TB-like lesions found at slaughter during the year that were not identified as TB reactor animals divided by the number of animals tuberculin tested during the year expressed as a %
<a href="#">g17</a>	Confirmed TB animal prevalence in year (%)	Number of TB reactors that were confirmed during the year by the presence of visible lesions at slaughter and/or by laboratory confirmation (histopathology and/or culture) plus the number of other animals where M. bovis was cultured from TB-like lesions found at slaughter during the year that were not identified as TB reactor animals divided by the number of animals tuberculin tested during the year expressed as a %
<a href="#">g37</a>	No. herds with confirmed TB in last 12 months	Herds that had at least one confirmed TB animal during the last 12 months.
<a href="#">g38</a>	No. herds with confirmed TB in last 13-24 months	Herds that had at least one confirmed TB animal during the last 13-24 months.
<a href="#">g24</a>	No. herds with confirmed TB in year	Herds that had at least one confirmed TB animal during the year.
<a href="#">g20</a>	No. herds with confirmed TB in year	Herds that had at least one confirmed TB animal during the year.
<a href="#">g21</a>	No. herds with confirmed TB in year	Herds that had at least one confirmed TB animal during the year.
<a href="#">g22</a>	No. herds with confirmed TB in year	Herds that had at least one confirmed TB animal during the year.
<a href="#">g23</a>	No. herds with confirmed TB in year	Herds that had at least one confirmed TB animal during the year.
<a href="#">g39</a>	Confirmed TB herd prevalence in last 12 months (%)	Number of herds that had at least one confirmed TB animal during the last 12 months divided the number of herds that presented cattle at a TB herd test expressed as a %.
<a href="#">g40</a>	Confirmed TB herd prevalence in last 13-24 months (%)	Number of herds that had at least one confirmed TB animal during the last 13-24 months divided the number of herds that presented cattle at a TB herd test expressed as a %.
<a href="#">g30</a>	Confirmed TB herd prevalence in year (%)	Number of herds that had at least one confirmed TB animal during the year divided the number of herds that presented cattle at a TB herd test expressed as a %.
<a href="#">g26</a>	Confirmed TB herd prevalence in year (%)	Number of herds that had at least one confirmed TB animal during the year divided the number of herds that presented cattle at a TB herd test expressed as a %.
<a href="#">g27</a>	Confirmed TB herd prevalence in year (%)	Number of herds that had at least one confirmed TB animal during the year divided the number of herds that presented cattle at a TB herd test expressed as a %.
<a href="#">g28</a>	Confirmed TB herd prevalence in year (%)	Number of herds that had at least one confirmed TB animal during the year divided the number of herds that presented cattle at a TB herd test expressed as a %.
<a href="#">g29</a>	Confirmed TB herd prevalence in year (%)	Number of herds that had at least one confirmed TB animal during the year divided the number of herds that presented cattle at a TB herd test expressed as a %.