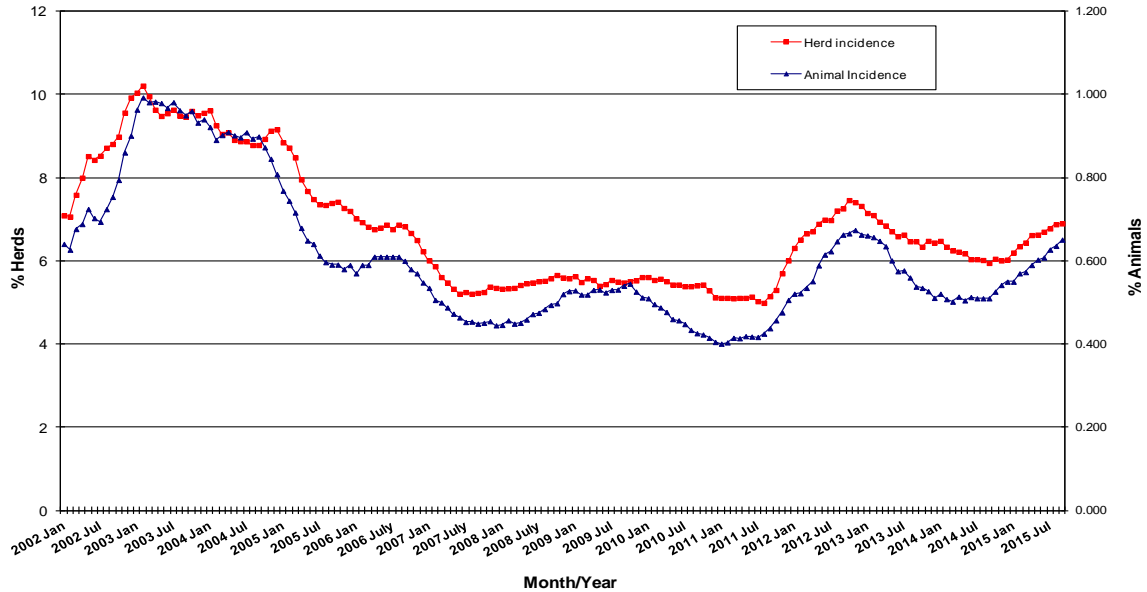


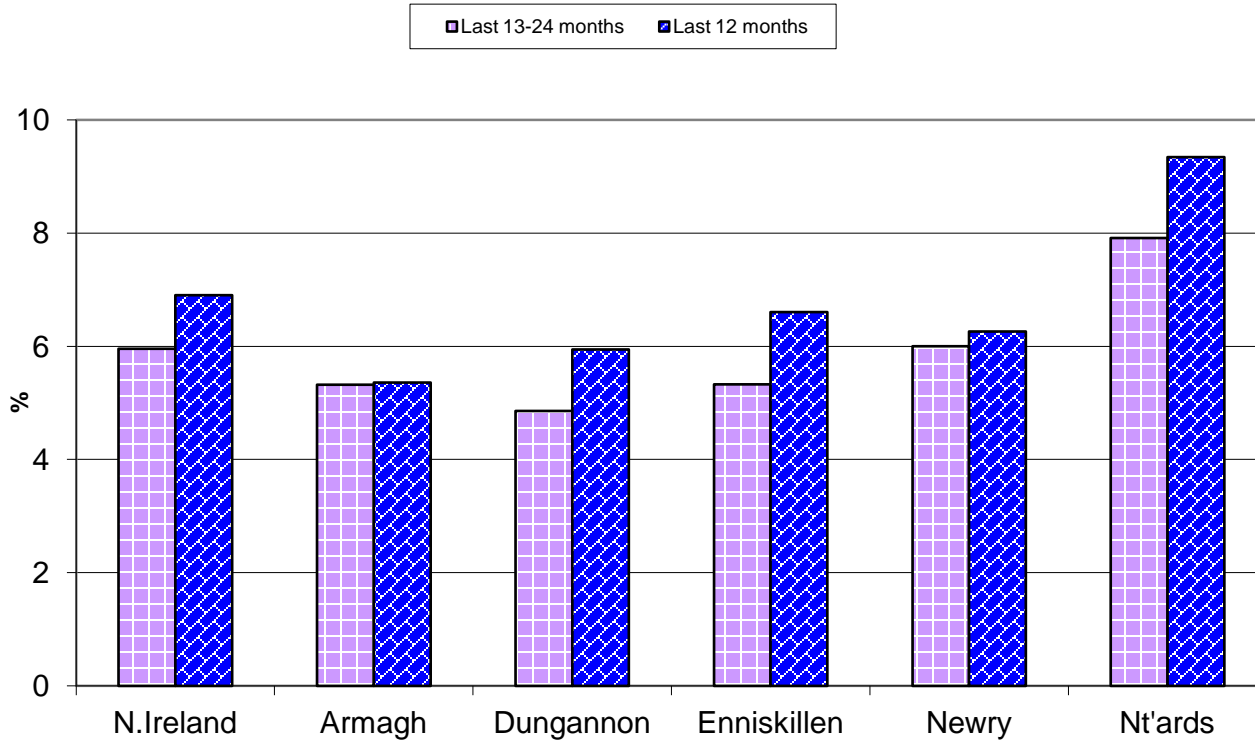
Tuberculosis: Statistics for September 2015

Tests Completed	Herds	Number of herds tested (any test), by DVO	Cumulative Statistics	
		Number of herds with herd-level test, by DVO	Cumulative Statistics	
		Number of herds with any risk test, by DVO		
		Number of herds with herd-level risk test, by DVO		
		Number of herds with herd-level restricted test, by DVO		
	Animals	Total number of tests performed, by DVO	Cumulative Statistics	
		Total number of animals tests, by DVO	Cumulative Statistics	
		Total number of restricted herd tests, by DVO	Number of animals tested	
		Total number of herd tests, by DVO	Number of animals tested	
		Total number of individual tests, by DVO	Number of animals tested	
Total number of animals tested, by DVO				
Summary Statistics	Herds with TB reactors during month, by DVO	Cumulative Statistics	APT	
	Number of new reactor herds, by DVO	Cumulative Statistics	Negative-in-contacts	
	Number of new reactor animals, by DVO		Reactor removal times	
	Herd Prevalance			
	Herd Incidence			
	Animal Incidence			
	Number of reactor animals by month and by DVO			
	Number of new reactor herds by month and by DVO			
	Total number of all reactor herds by DVO			
Summary Charts	Current Animal Incidence Chart	Monthly TB reactors chart	Yearly Confirmed Herd Prevalence	
	Yearly Animal Incidence Chart	New TB reactor herds	Current Confirmed Herd Prevalence	
	Current Herd Incidence Chart	TB Herd & Animal Incidence		
	Yearly Herd Incidence Chart			

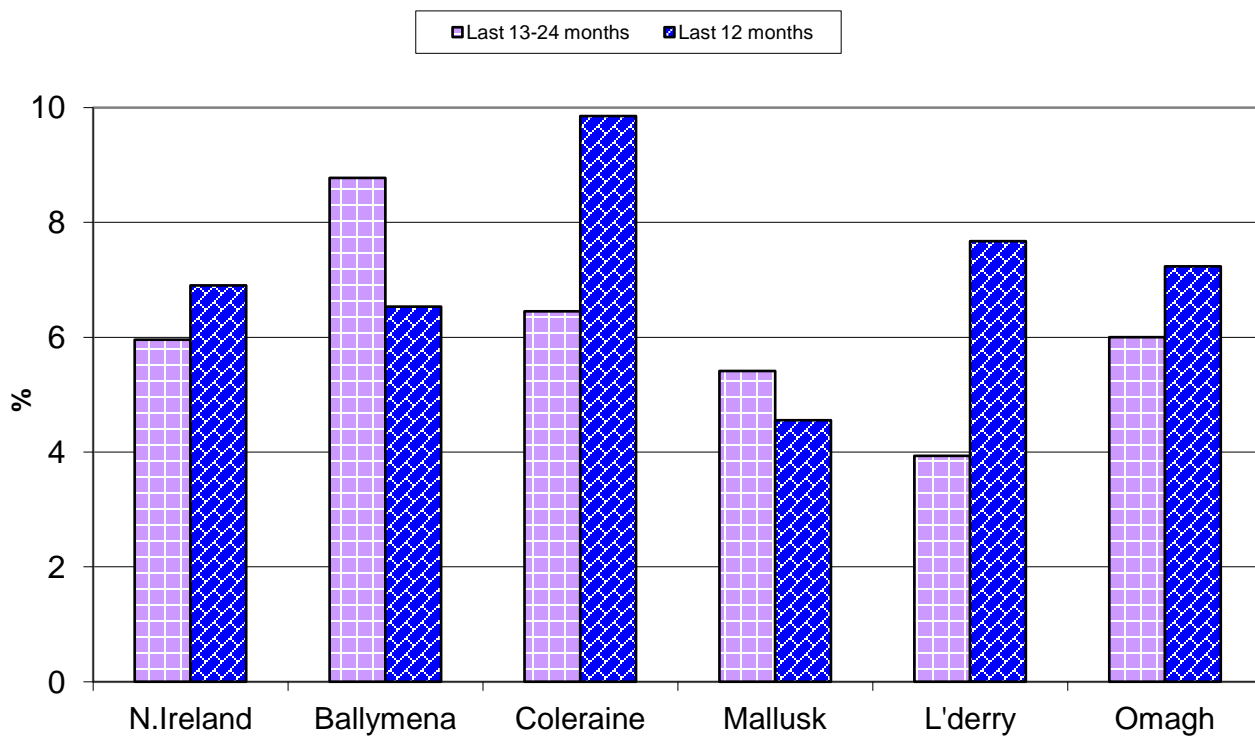
TB Herd and Animal Incidence:
 (12 month moving average: January 2002 to September 2015)

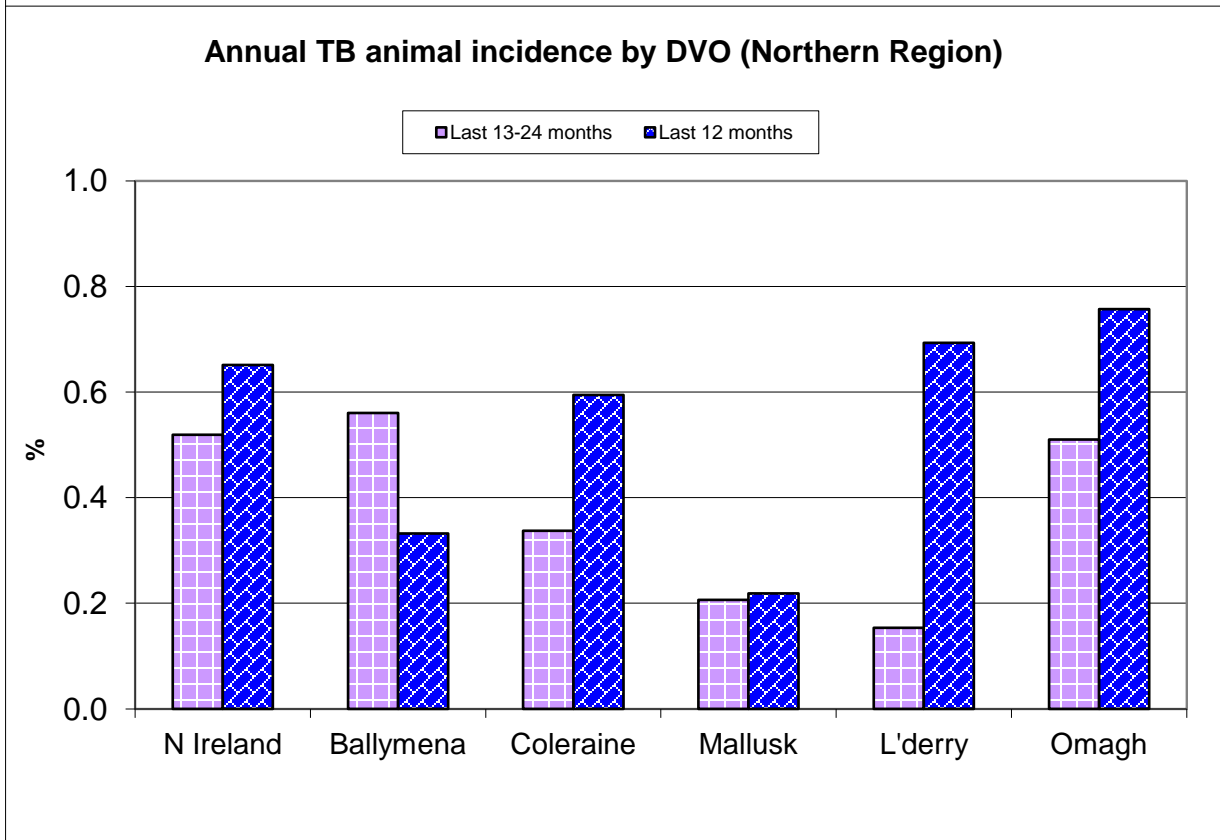
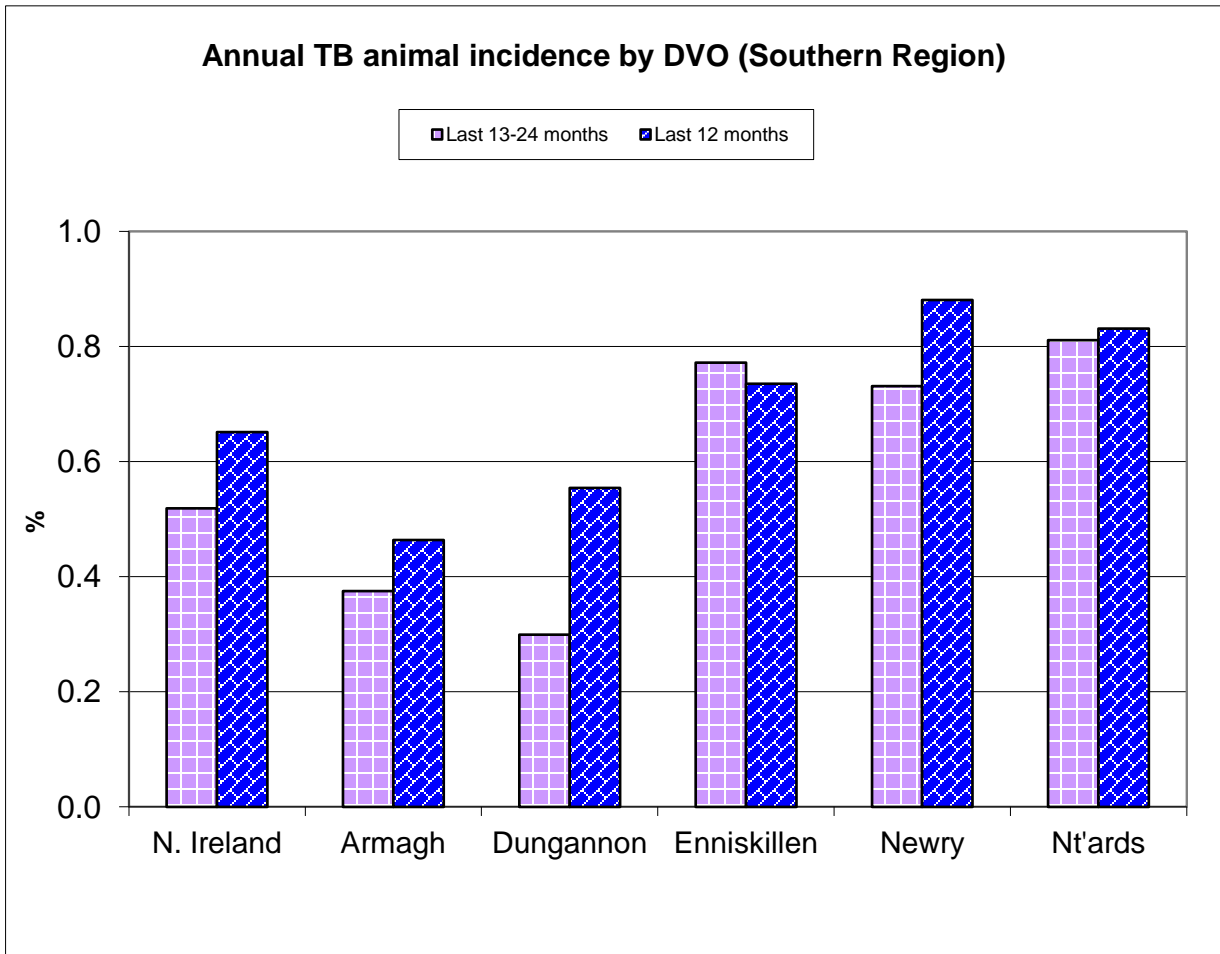


Annual TB herd incidence by DVO (Southern Region)

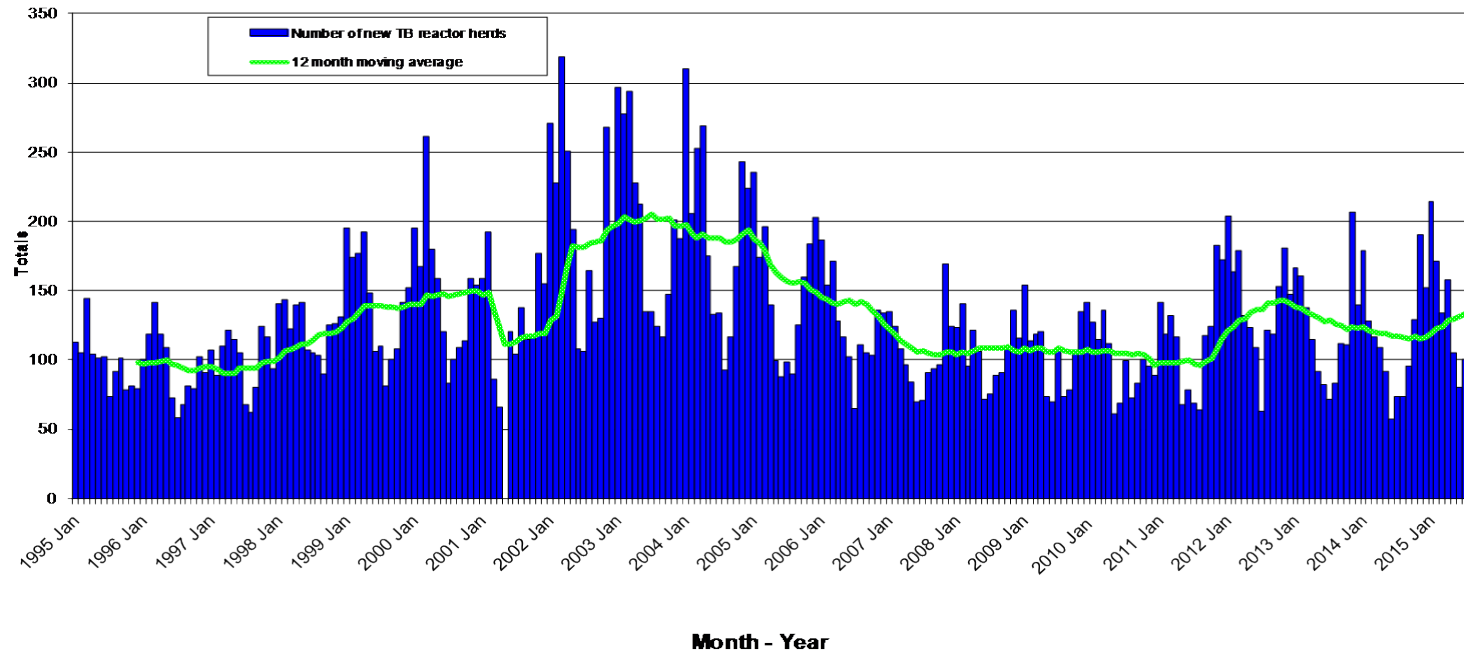


Annual TB herd incidence by DVO (Northern Region)

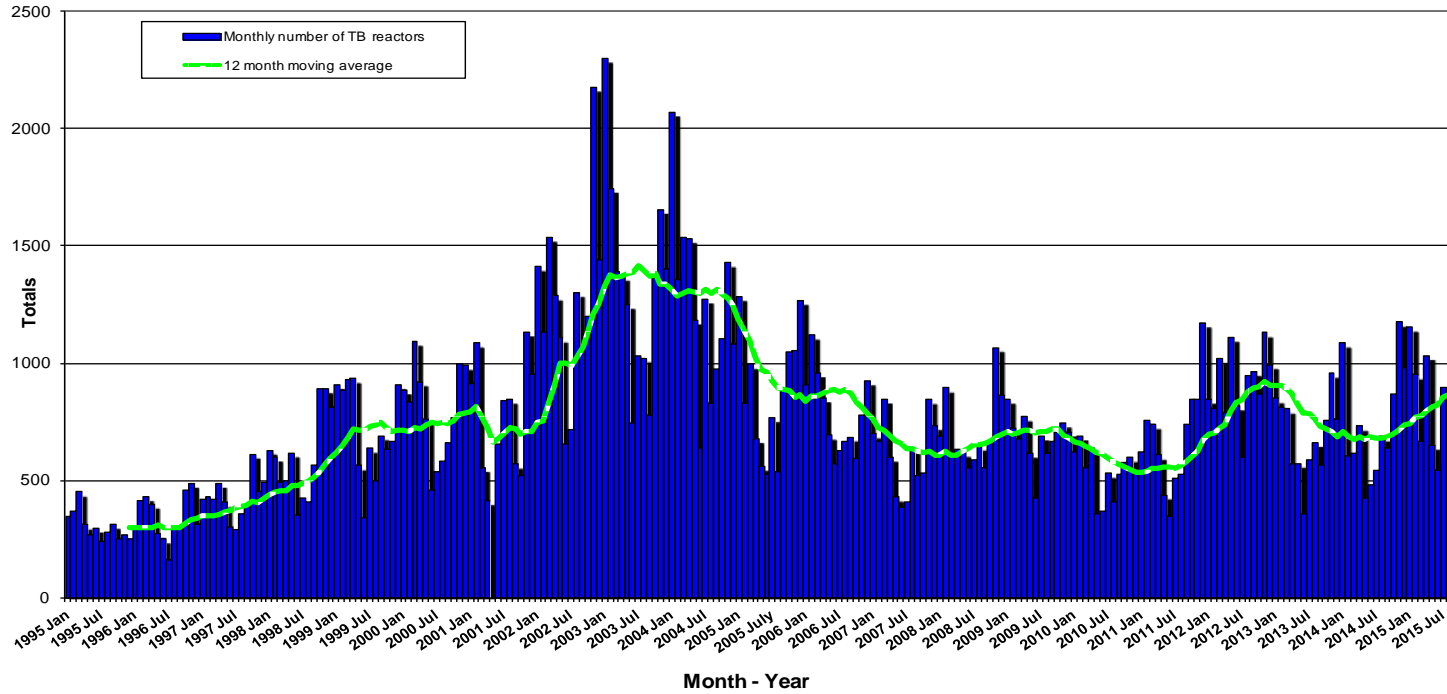


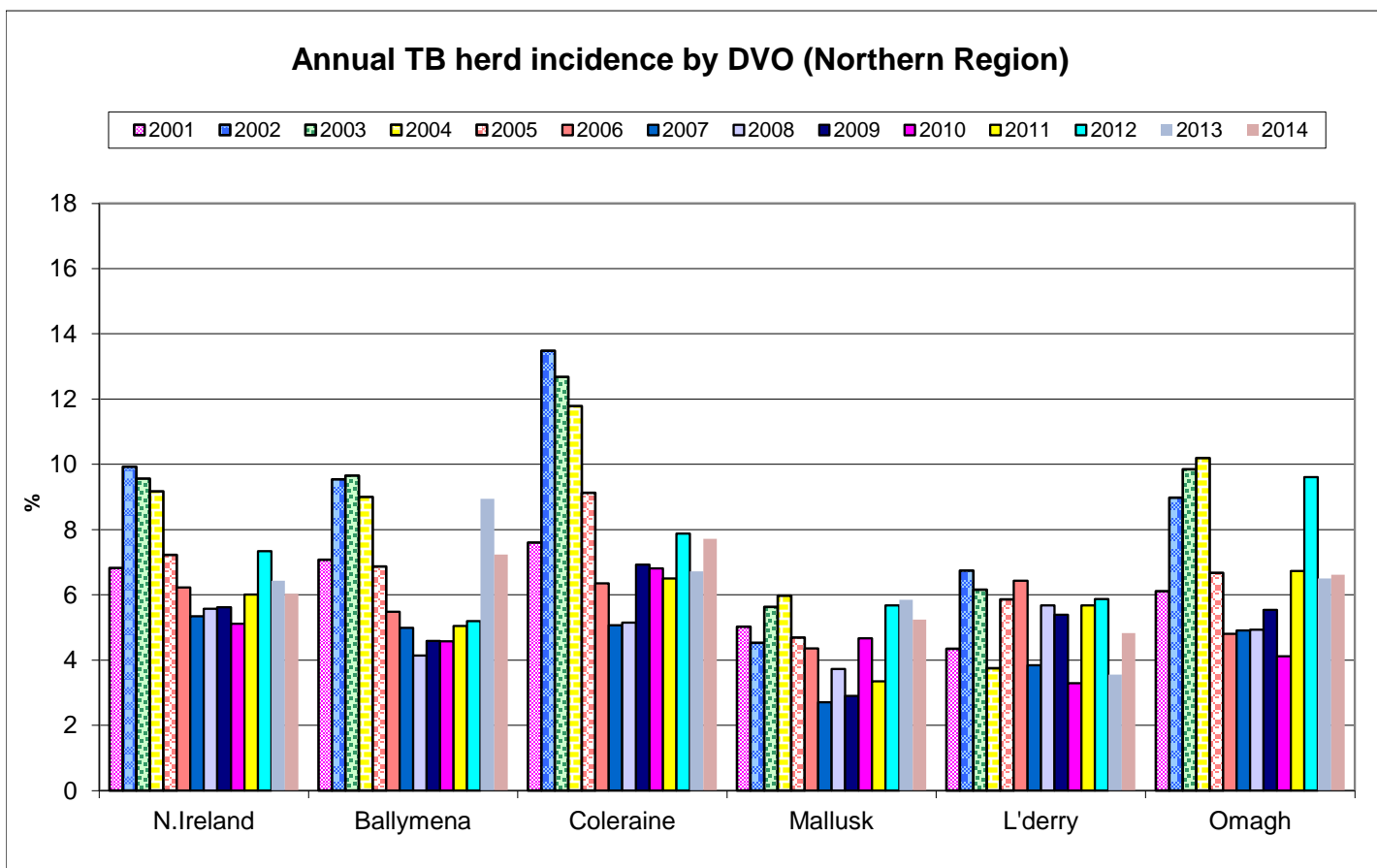
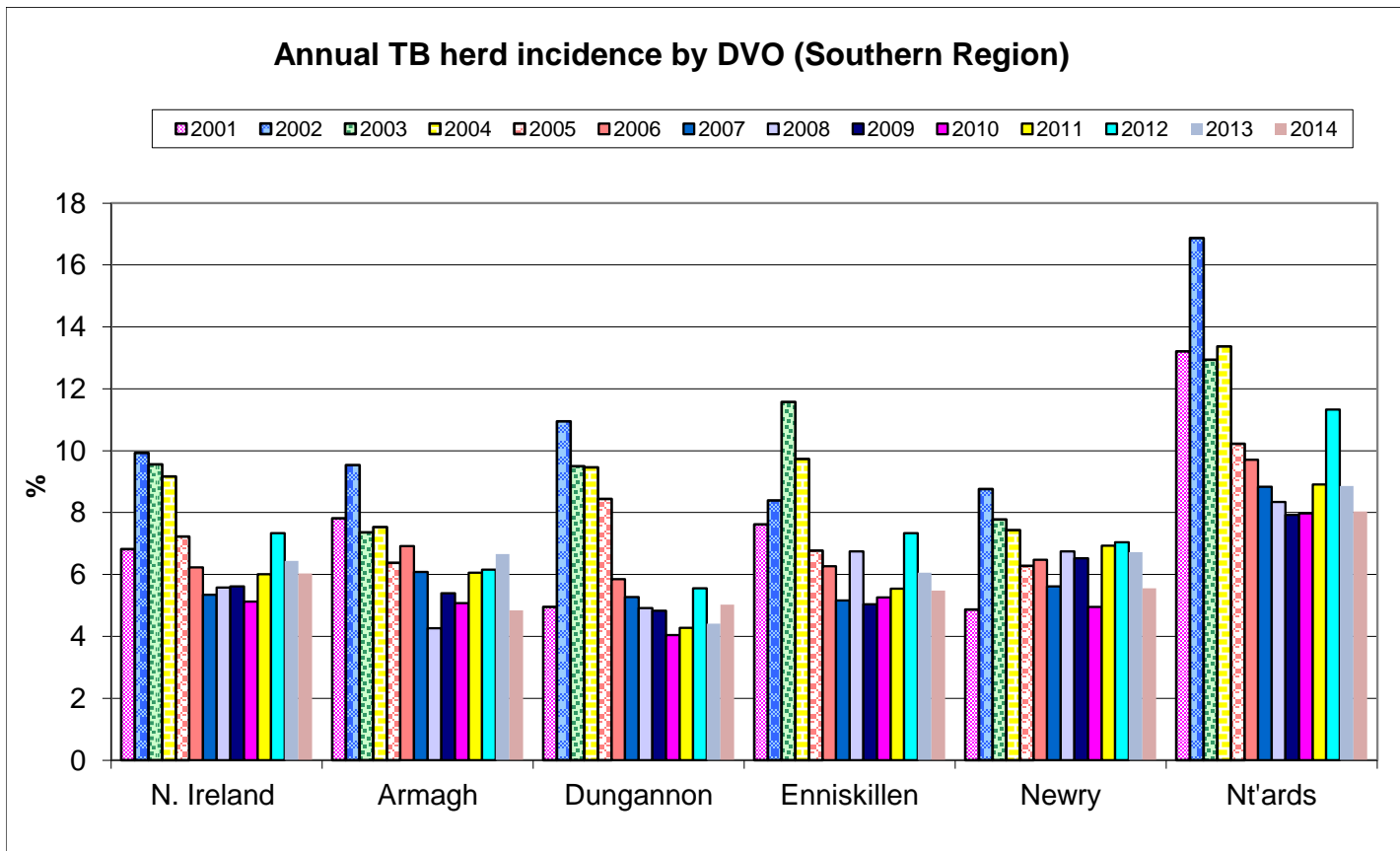


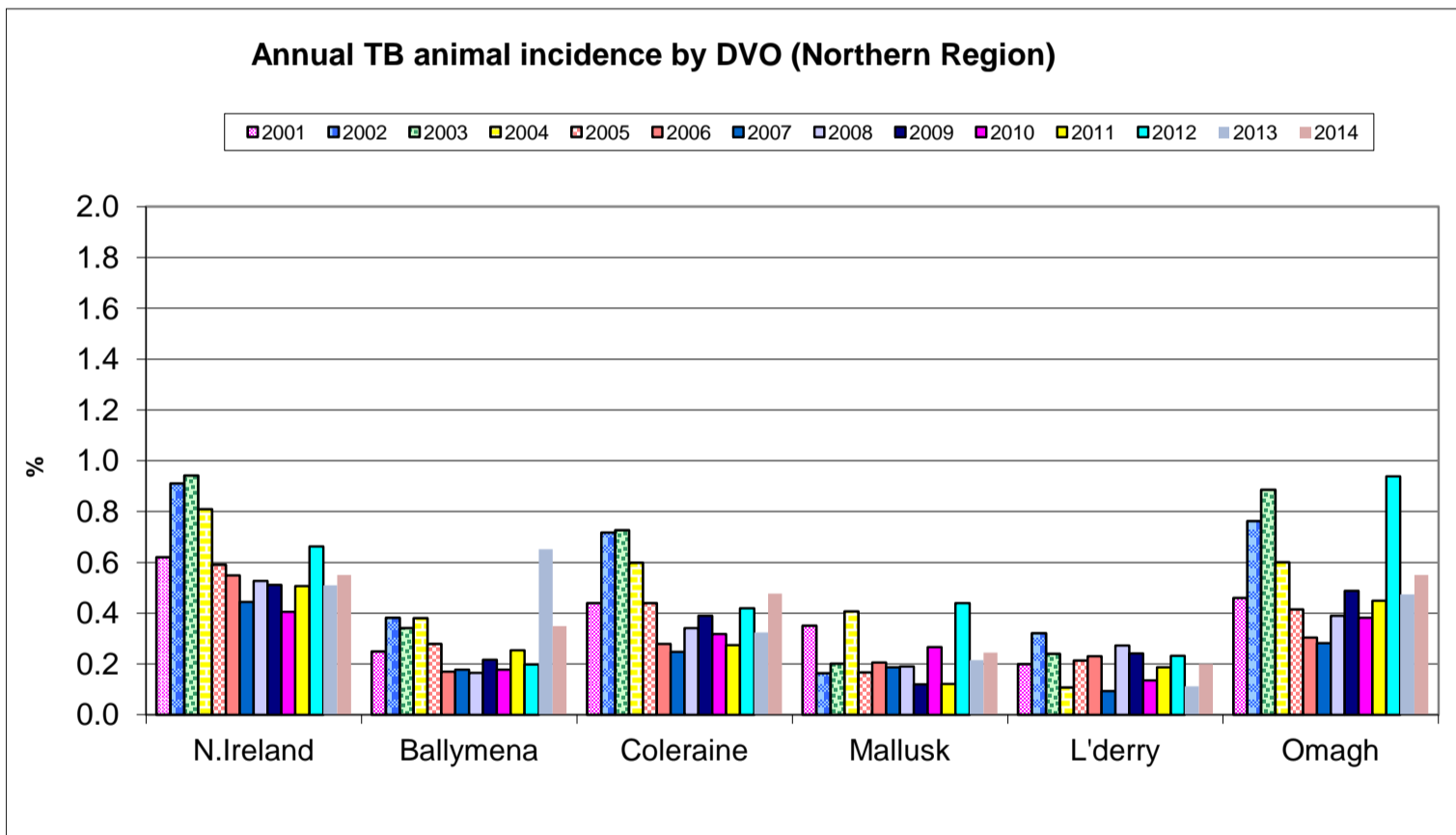
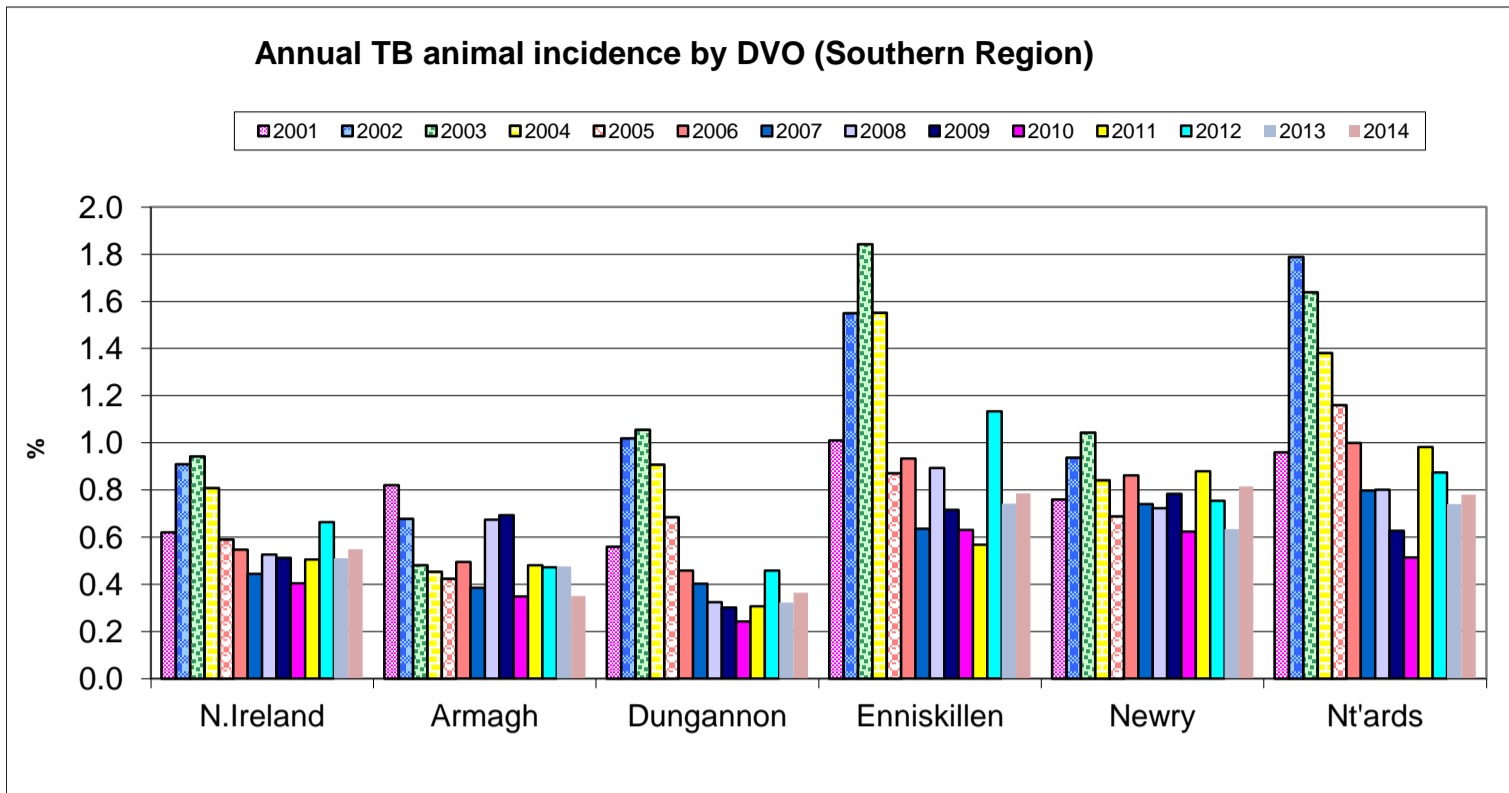
New TB Reactor Herds: January 1995 to September 2015



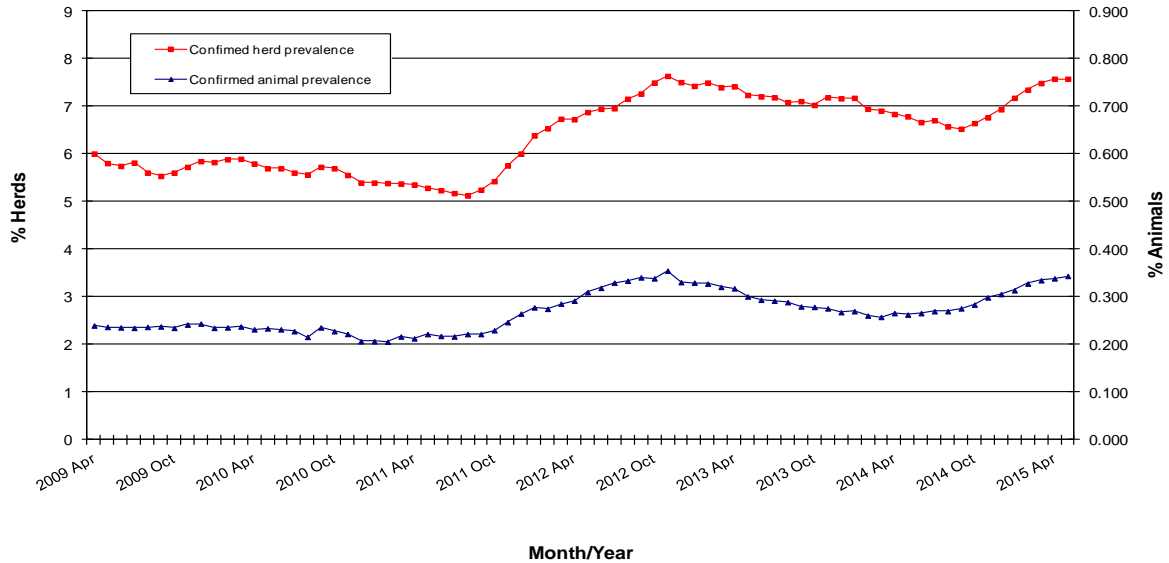
TB Reactors: January 1995 to September 2015

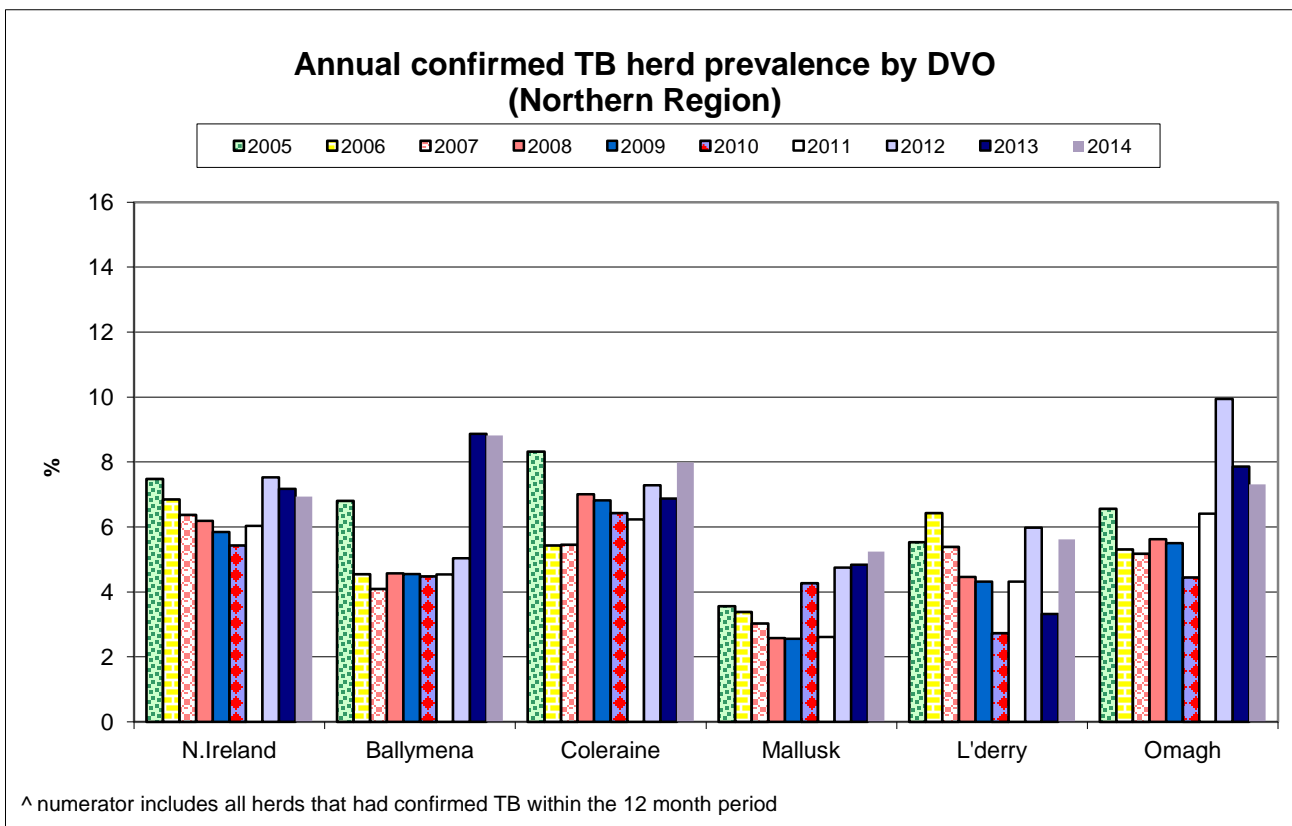
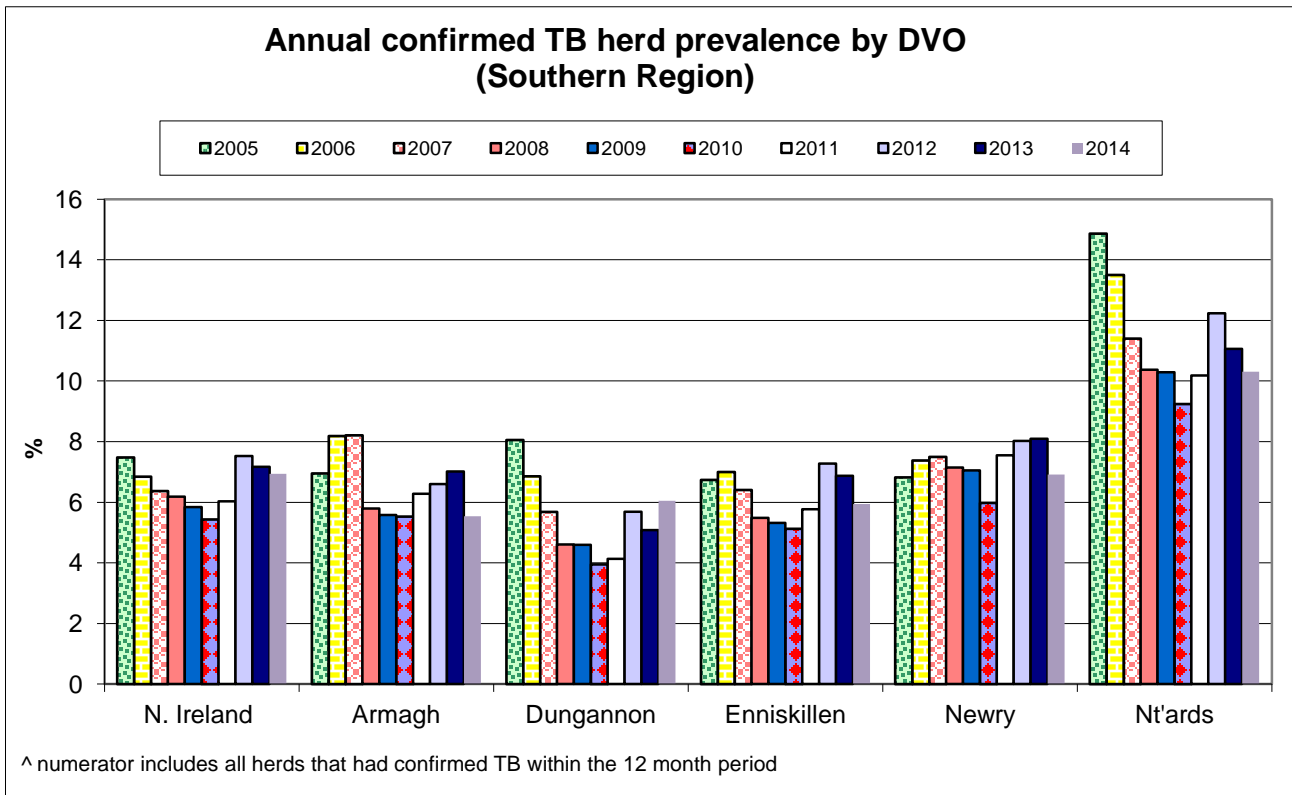




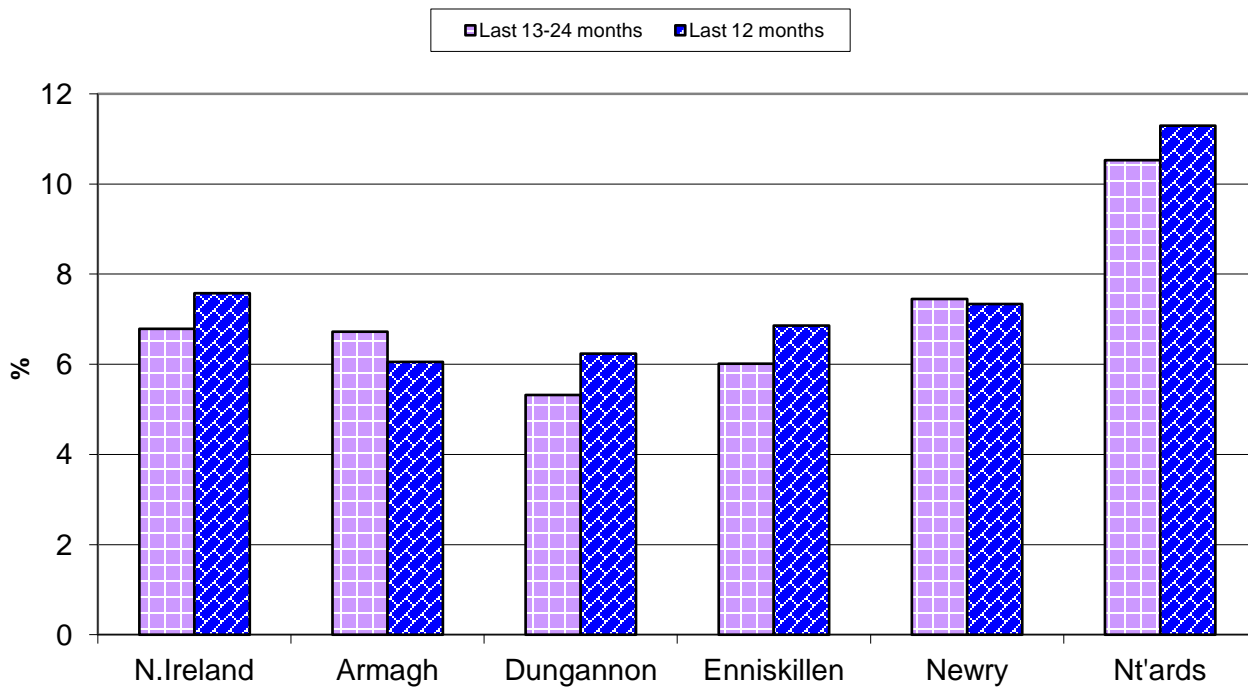


**TB Confirmed Herd^ and Animal Prevalence:
(12 month moving average: April 2009 to May 2015)**



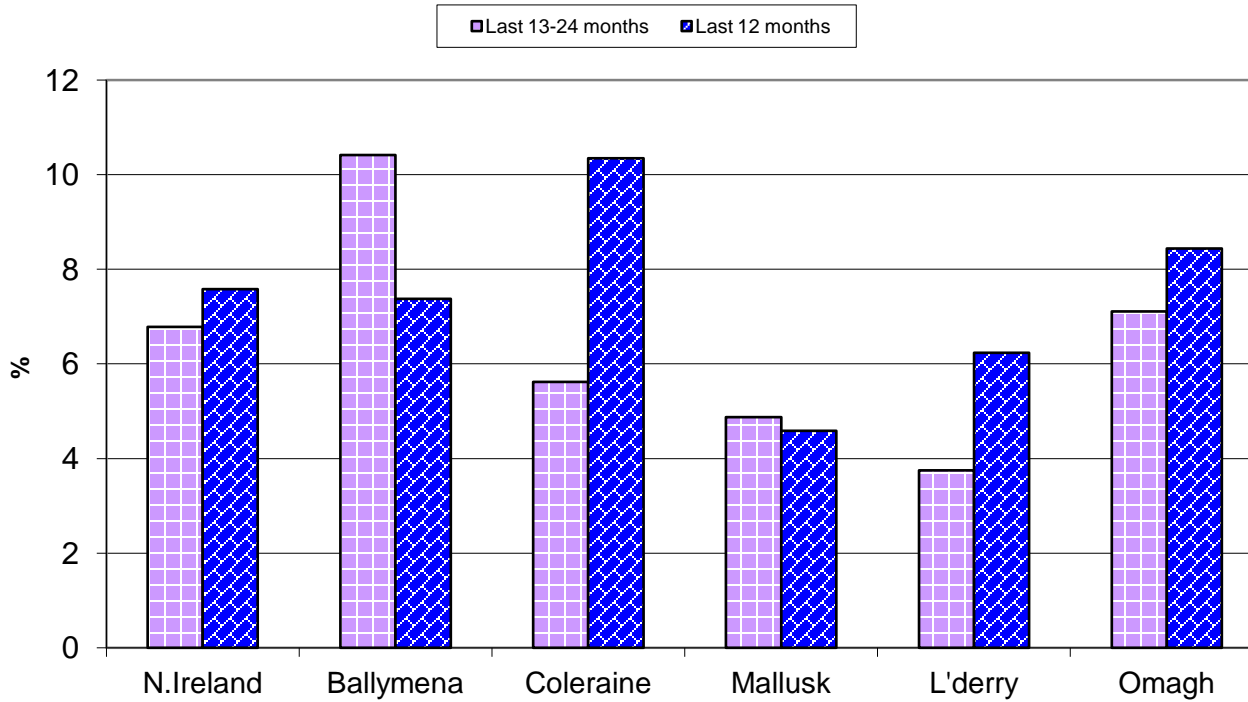


Annual confirmed TB herd prevalence^ by DVO (Southern Region)



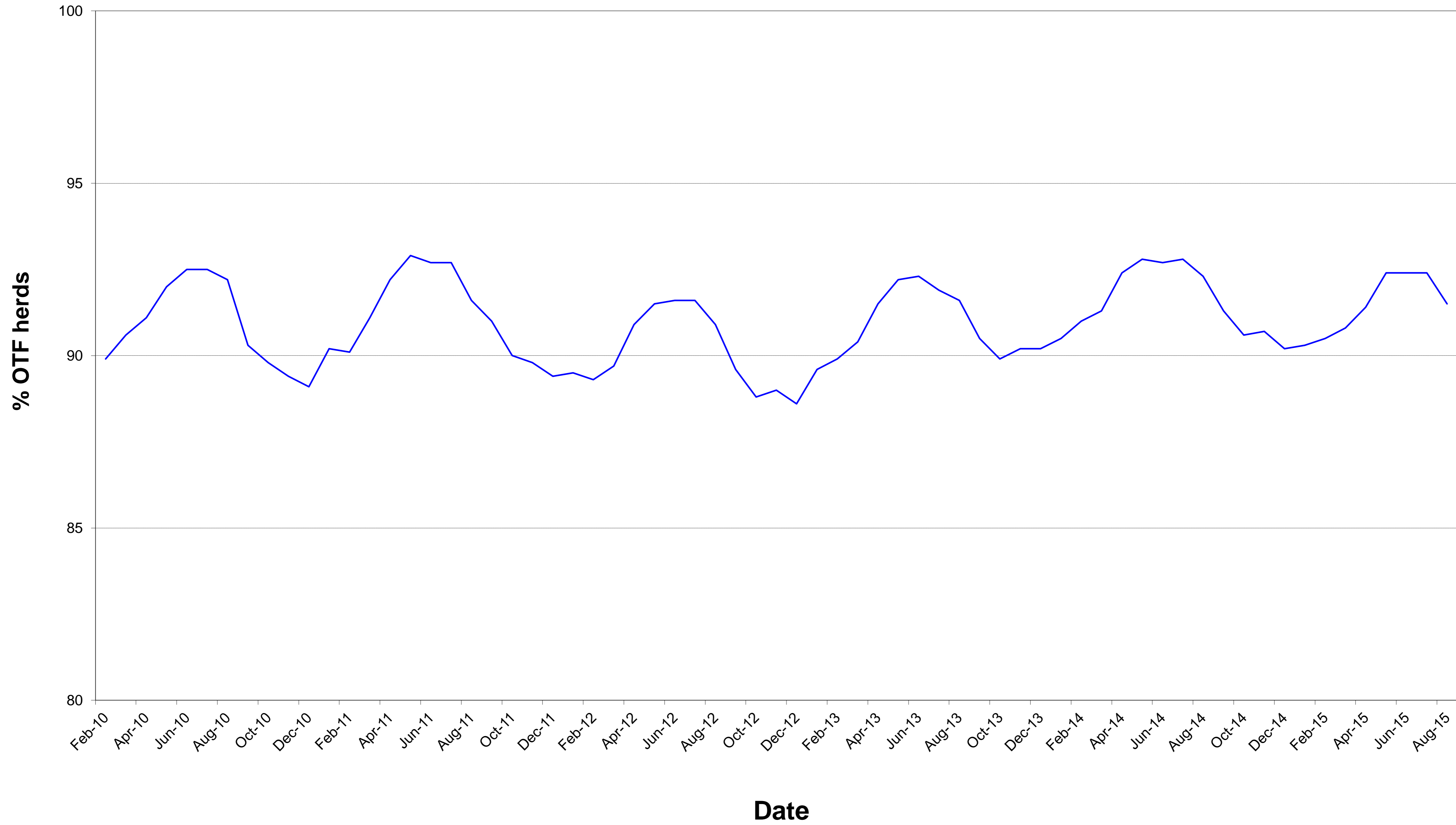
^ numerator includes all herds that had confirmed TB within the 12 month period

Annual confirmed TB herd prevalence^ by DVO (Northern Region)



^ numerator includes all herds that had confirmed TB within the 12 month period

% operational herds that are officially tuberculosis free (OTF herds)



Month = September 2015

Ref.	Total	Armagh	Ballymena	Coleraine	Dungannon	Enniskillen	Mallusk	L'derry	Newry	Nt'ards	Omagh	
d1	No. of herds with TB reactors during month	179	8	7	26	28	22	7	14	31	16	20
d2	No. of new reactor herds during month	98	6	4	12	20	12	3	8	13	9	11
d3	No. of new reactor herds since start of year	1161	95	65	169	128	151	54	50	177	131	141
d4	No. of new reactor herds in the previous 12 months	1632	124	93	257	171	206	76	68	232	181	224
d26	No. of new reactor herds in the previous 13-24 months	1384	122	122	163	137	163	89	35	219	150	184
d5	No. of TB reactor animals during month	874	22	25	112	91	133	32	66	111	117	165
d6	No. of TB reactor animals since start of year	7603	583	296	798	808	851	266	315	1376	1135	1175
d7	No. of reactor animals in the previous 12 months	10631	788	392	1334	1089	1215	316	449	1967	1487	1594
d27	No. of reactor animals in the previous 13-24 months	8283	638	649	713	571	1235	294	95	1608	1439	1041
d20	Cumulative herd incidence in year (%)	6.27	5.11	6.11	8.29	5.78	5.98	4.65	7.91	5.76	8.25	5.96
d9	Annual herd incidence over the last 12 months (%)	6.90	5.36	6.53	9.85	5.95	6.60	4.55	7.67	6.26	9.34	7.24
d28	Annual herd incidence over the last 13-24 months (%)	5.96	5.32	8.78	6.45	4.85	5.33	5.41	3.93	6.00	7.91	6.00
d30	2014 Herd Incidence (%)	6.03	4.84	7.24	7.71	5.02	5.48	5.24	4.83	5.55	8.03	6.62
d16	2013 Herd Incidence (%)	6.44	6.66	8.94	6.72	4.41	6.06	5.85	3.55	6.72	8.86	6.51
d10	2012 Herd Incidence (%)	7.34	6.15	5.19	7.88	5.55	7.34	5.67	5.87	7.04	11.33	9.61
d11	2011 Herd Incidence (%)	6.00	6.05	5.05	6.51	4.28	5.54	3.35	5.68	6.92	8.91	6.73
d38	2010 Herd Incidence (%)	5.12	5.07	4.58	6.81	4.04	5.25	4.67	3.29	4.95	7.98	4.12
d21	Cumulative animal incidence in year (%)	0.592	0.425	0.332	0.454	0.545	0.632	0.266	0.681	0.758	0.770	0.747
d12	Annual animal incidence over the last 12 months (%)	0.651	0.464	0.332	0.595	0.554	0.735	0.219	0.693	0.881	0.831	0.757
d29	Annual animal incidence over the last 13-24 months (%)	0.519	0.375	0.561	0.337	0.299	0.772	0.207	0.154	0.731	0.811	0.510
d31	2014 Animal Incidence (%)	0.550	0.350	0.349	0.476	0.364	0.786	0.244	0.199	0.815	0.781	0.551
d15	2013 Animal Incidence (%)	0.510	0.476	0.652	0.324	0.323	0.742	0.214	0.112	0.634	0.741	0.474
d13	2012 Animal Incidence (%)	0.663	0.473	0.198	0.419	0.459	1.133	0.439	0.232	0.754	0.875	0.938
d14	2011 Animal Incidence (%)	0.506	0.481	0.254	0.274	0.307	0.567	0.122	0.187	0.880	0.982	0.449

d39	2010 Animal Incidence (%)	0.404	0.348	0.178	0.318	0.243	0.630	0.266	0.136	0.624	0.514	0.381
d34	APT during current month	5.86	1.83	3.39	5.05	5.09	7.88	4.18	10.44	4.95	6.29	9.25
d22	APT since start of year	4.03	3.11	2.42	2.91	4.16	4.36	2.06	5.01	5.29	4.92	5.06
d17	Current 12 month moving average APT	4.01	3.14	2.20	3.46	3.97	4.50	1.59	4.96	5.49	4.77	4.79
d32	2014 APT	3.55	2.39	2.18	3.24	2.78	5.24	1.79	1.58	5.08	4.64	3.65
d18	2013 APT	3.27	3.14	4.53	2.20	2.42	4.90	1.64	0.86	3.87	4.33	3.05
d19	2012 APT	4.21	3.17	1.52	2.90	3.37	7.17	3.37	1.68	4.57	4.92	5.67
d42	2011 APT	3.40	3.27	2.00	1.93	2.35	3.98	0.98	1.45	5.24	5.86	3.25
d40	2010 APT	2.74	2.38	1.36	2.24	1.86	4.31	2.12	1.03	3.71	3.28	2.85
d23	No. negative in contacts since start of year	594	53	10	15	35	33	45	1	14	77	311
d46	No. negative in contacts over last 12 months	826	79	10	59	43	54	64	1	32	92	392
d33	No. negative in contacts during 2014	1060	40	10	100	227	93	29	9	201	35	316
d24	No. negative in contacts during 2013	565	44	74	3	18	83	22	0	49	35	237
d25	No. negative in contacts during 2012	1394	9	0	23	35	79	611	1	133	55	448
d43	No. negative in contacts during 2011	484	12	1	13	19	19	40	0	144	179	57
d41	No. negative in contacts during 2010	740	42	29	13	5	157	117	2	73	61	241
d37	Reactor removal time 2015	9.6	9.6	9.6	9.6	8.9	8.2	9.6	8.9	10.3	9.6	8.9
d45	Reactor removal time 2014	8.9	9.6	8.9	8.9	8.9	8.9	8.9	8.2	10.3	8.9	8.2
d35	Reactor removal time 2013	8.9	9.6	8.9	8.2	9.6	8.9	9.6	8.9	9.6	9.6	8.2
d47	Reactor removal time 2012	11.6	12.3	12.3	9.6	12.3	10.3	10.3	8.9	11.6	11.6	8.9
D44	Reactor removal time 2011	9.6	13.0	8.2	8.9	8.9	10.3	11.6	8.2	11.6	8.9	8.2
d36	Reactor removal time 2010	11.6	13.7	8.2	8.9	9.6	11.0	8.9	8.2	12.3	12.3	8.9

Tuberculosis: number of reactor herds by month and by DVO in 2015 and unique herd breakdowns during the year

2015		DVO_CODE										
Year	Month	Armagh	Ballymena	Coleraine	Dungannon	Enniskillen	Mallusk	L'Derry	Newry	Nt'Ards	Omagh	Total
2015	1	18	17	36	25	19	13	8	21	21	36	214
2015	2	8	15	31	13	19	8	4	22	23	28	171
2015	3	14	6	24	12	18	6	2	24	12	16	134
2015	4	16	9	22	18	26	5	5	23	17	17	158
2015	5	9	3	13	10	20	6	5	16	10	13	105
2015	6	8	2	9	12	15	5	4	7	10	8	80
2015	7	8	2	10	10	12	3	11	25	12	7	100
2015	8	8	7	12	8	10	5	3	26	17	5	101
2015	9	6	4	12	20	12	3	8	13	9	11	98
2015	10											0
2015	11											0
2015	12											0
Total		95	65	169	128	151	54	50	177	131	141	1161

Unique Herd Breakdowns		DVO_CODE										
Year	Armagh	Ballymena	Coleraine	Dungannon	Enniskillen	L'Derry	Mallusk	Newry	Nt'Ards	Omagh	Total Herds	
2015	128	80	234	169	187	59	66	239	180	193	1535	

Tuberculosis: number of reactor herds by month and by DVO in 2014 and unique herd breakdowns during the year

2014		DVO_CODE										
Year	Month	Armagh	Ballymena	Coleraine	Dungannon	Enniskillen	Mallusk	L'Derry	Newry	Nt'Ards	Omagh	Total
2014	1	9	20	22	13	18	22	9	24	13	29	179
2014	2	16	19	18	8	13	10	4	22	11	7	128
2014	3	10	12	12	14	11	7	3	19	14	15	117
2014	4	8	4	12	11	15	8	3	16	15	17	109
2014	5	6	9	5	13	14	3	2	13	15	12	92
2014	6	8	2	6	7	13	2	1	11	2	5	57
2014	7	7	2	4	8	5	5	2	18	10	13	74
2014	8	9	3	8	11	12	1	1	12	9	8	74
2014	9	8	2	17	14	11	5	0	13	13	13	96
2014	10	11	6	20	12	14	5	4	15	13	29	129
2014	11	9	10	35	19	27	8	6	22	22	32	190
2014	12	9	12	33	12	14	9	8	18	15	22	152
Total		110	101	192	142	167	85	43	203	152	202	1397

Unique Herd Breakdowns		DVO_CODE										
Year	Armagh	Ballymena	Coleraine	Dungannon	Enniskillen	Mallusk	L'Derry	Newry	Nt'Ards	Omagh	Total Herds	
2014	136	136	229	181	212	103	51	274	201	246	1769	

Tuberculosis: number of reactor herds by month and by DVO in 2013 and unique herd breakdowns during the year

2013		DVO_CODE										
Year	Month	Armagh	Ballymena	Coleraine	Dungannon	Enniskillen	Mallusk	L'Derry	Newry	Nt'Ards	Omagh	Total
2013	1	13	20	20	16	24	17	7	12	16	21	166
2013	2	13	4	24	16	18	19	4	17	18	28	161
2013	3	17	12	17	12	13	14	5	16	10	22	138
2013	4	15	6	11	14	15	5	2	20	17	10	115
2013	5	4	3	13	7	16	6	2	26	7	8	92
2013	6	13	5	7	2	10	1	1	24	7	12	82
2013	7	6	4	4	4	9	3	0	14	14	14	72
2013	8	11	4	7	3	10	0	0	20	19	9	83
2013	9	16	14	8	13	19	2	0	23	9	8	112
2013	10	15	6	10	10	15	2	0	22	14	17	111
2013	11	18	25	31	14	22	14	4	34	22	23	207
2013	12	8	18	18	14	14	10	6	15	12	25	140
Total		149	121	170	125	185	93	31	243	165	197	1479

Unique Herd Breakdowns		DVO_CODE										
Year	Armagh	Ballymena	Coleraine	Dungannon	Enniskillen	Mallusk	L'Derry	Newry	Nt'Ards	Omagh	Total Herds	
2013	184	139	212	172	255	106	35	324	213	259	1899	

A herd is defined as being a TB reactor herd if it had at least one TB reactor animal in that month and no TB reactor animals during the previous 12 months.

A TB unique herd breakdown is defined as a herd which has had at least one TB reactor during the specified calendar year irrespective of any TB reactors during the previous calendar year.

Tuberculosis: number of reactor animals by month and by DVO 2015

2015		DVO_CODE										
Year	Month	Armagh	Ballymena	Coleraine	Dungannon	Enniskillen	L'Derry	Mallusk	Newry	Nt'Ards	Omagh	Total
2015	1	85	78	130	98	129	22	33	125	209	245	1154
2015	2	45	80	116	45	87	29	44	198	132	175	951
2015	3	46	19	120	52	64	7	49	108	59	142	666
2015	4	71	28	83	215	126	39	14	223	141	94	1034
2015	5	51	12	46	45	94	42	33	93	84	150	650
2015	6	94	9	30	40	75	22	10	152	59	51	542
2015	7	19	27	75	170	68	78	40	182	115	124	898
2015	8	150	18	86	52	75	10	11	184	219	29	834
2015	9	22	25	112	91	133	66	32	111	117	165	874
2015	10											0
2015	11											0
2015	12											0
Total		583	296	798	808	851	315	266	1376	1135	1175	7603

Tuberculosis: number of reactor animals by month and by DVO 2014

2014		DVO_CODE										
Year	Month	Armagh	Ballymena	Coleraine	Dungannon	Enniskillen	Mallusk	L'Derry	Newry	Nt'Ards	Omagh	Total
2014	1	53	91	62	42	121	65	25	253	212	162	1086
2014	2	38	56	62	37	66	29	9	157	82	68	604
2014	3	33	51	29	77	106	17	10	114	86	91	614
2014	4	36	10	62	38	144	36	9	132	187	78	732
2014	5	18	23	35	48	70	8	6	114	69	34	425
2014	6	49	44	64	22	94	10	2	74	61	60	480
2014	7	51	17	19	44	66	12	6	157	104	70	546
2014	8	72	11	54	65	131	2	5	152	120	75	687
2014	9	29	10	99	43	119	39	1	95	117	84	636
2014	10	81	12	159	43	77	73	28	122	85	191	871
2014	11	54	45	193	147	181	38	6	220	179	112	1175
2014	12	70	39	184	91	106	23	16	249	88	116	982
Total		584	409	1022	697	1281	352	123	1839	1390	1141	8838

Tuberculosis: number of reactor animals by month and by DVO 2013

2013		DVO_CODE										
Year	Month	Armagh	Ballymena	Coleraine	Dungannon	Enniskillen	Mallusk	L'Derry	Newry	Nt'Ards	Omagh	Total
2013	1	61	69	83	84	122	59	9	143	98	122	850
2013	2	84	23	107	102	136	60	5	108	102	87	814
2013	3	80	54	90	78	137	39	11	156	72	88	805
2013	4	81	9	44	83	74	18	11	120	79	51	570
2013	5	45	26	34	28	131	15	5	87	126	77	574
2013	6	29	17	24	19	26	1	3	88	108	44	359
2013	7	87	51	29	31	97	9	2	83	125	76	590
2013	8	46	62	29	23	97	8	2	152	168	76	663
2013	9	49	97	27	33	96	17	0	126	61	58	564
2013	10	114	35	59	54	76	6	5	101	199	107	756
2013	11	71	207	95	40	140	45	7	159	86	107	957
2013	12	74	94	73	61	102	25	10	100	116	105	760
Total		821	744	694	636	1234	302	70	1423	1340	998	8262

A TB reactor animal is defined as an animal where the manual interpretation field for a skin test is positive ('P') with the first test date being taken as the time at which the animal became a reactor. Animals with lesions at routine slaughter ('LRS') are not taken into account.

Month = September 2015

Ref.		Total	Armagh	Ballymena	Coleraine	Dungannon	Enniskillen	Mallusk	L'derry	Newry	Nt'ards	Omagh
b16	No. herds with any test completed in month	2531	260	111	276	334	328	130	108	434	242	308
b17	No. herds with any test, from start of year	19409	1976	1126	2144	2320	2606	1264	673	3169	1652	2479
b29	All herds with any test, from start of year	19936	2012	1148	2216	2398	2656	1297	713	3265	1673	2558
b18	No. herds with any test, from start of year (no cattle)	527	36	22	72	78	50	33	40	96	21	79
b19	No. herds with herd test completed in month	2050	190	76	222	271	288	83	80	381	213	246
b20	No. herds with herd test, from start of year	18526	1860	1064	2039	2216	2523	1162	632	3075	1588	2367
b30	All herds with herd test, from start of year	19062	1896	1086	2114	2295	2574	1195	673	3172	1609	2448
b21	No. herds with herd test, from start of year (no cattle)	536	36	22	75	79	51	33	41	97	21	81
b22	No. herds with herd test during last 12 months	23638	2314	1424	2609	2876	3119	1670	886	3707	1937	3096
b31	No. herds with herd test during last 13-24 months	23233	2292	1390	2526	2822	3058	1645	890	3648	1896	3066
b32	No. herds with herd test during 2014	23149	2274	1395	2490	2829	3049	1621	890	3658	1892	3051
b28	No. herds with herd test during 2013	22979	2237	1353	2530	2833	3054	1590	873	3618	1863	3028
b23	No. herds with herd test during 2012	23093	2244	1369	2513	2831	3067	1623	869	3638	1880	3059
b24	No. herds with herd test during 2011	23085	2197	1387	2567	2807	3068	1644	881	3668	1807	3059
b39	No. herds with herd test during 2010	22666	2169	1377	2496	2797	2969	1627	851	3599	1793	2988
b25	No. herds with any risk test completed	9139	1008	538	1065	992	1306	508	234	1462	923	1103
b26	No. herds with herd risk test completed	6435	642	380	717	608	1080	279	138	1073	708	810
b27	No. herds with restricted herd test completed	2631	240	144	389	271	297	149	80	399	302	360

Month = September 2015

Ref	Total	Armagh	Ballymena	Coleraine	Dungannon	Enniskillen	Mallusk	L'derry	Newry	Nt'ards	Omagh	
c1	Total number of tests in current month	2816	290	130	288	380	354	154	122	480	263	355
c2	Total number of tests from start of year	32863	3542	1845	3746	4030	4279	2086	1058	5162	3003	4112
c3	No. tests during the same time period in the previous year	30341	3411	1899	3093	3615	3703	2004	973	5050	2811	3782
c4	% change between years	7.7	3.7	-2.9	17.4	10.3	13.5	3.9	8.0	2.2	6.4	8.0
c5	No. tests in the previous 12 months	45191	4742	2590	5194	5540	5798	3054	1517	6924	4005	5827
c6	No. animal tests in current month	149177	12054	7374	22161	17887	16886	7651	6319	22407	18607	17831
c7	No. animal tests from start of year	1888889	187303	122548	274321	194399	195094	129327	62846	260047	230672	232332
c8	No. animal tests during the same time period in the previous year	1728341	180394	132345	203446	171375	169199	127302	50072	263998	218516	211694
c9	% change between years	8.5	3.7	-8.0	25.8	11.8	13.3	1.6	20.3	-1.5	5.3	8.9
c10	No. animal tests in previous 12 months	2650776	250851	178030	386063	274055	269769	198799	90448	358045	311775	332941
c11	No. cattle eligible for TB testing	1569324	154216	110777	207912	177586	152872	135116	61427	207210	164096	198112
c12	No. cattle herds eligible for TB testing	26135	2593	1553	2854	3160	3368	1860	1018	4148	2141	3440
c13	No. restricted herd tests during month	399	28	15	47	46	44	20	22	79	50	48
c14	No. animals tested	49381	3303	2538	7592	5681	4329	2513	3081	6751	6248	7345
c15	No. herd tests during month	2050	190	76	222	271	288	83	80	381	213	246
c16	No. animals tested	146213	11711	7081	21780	17655	16331	7403	6214	22109	18490	17439
c17	No. individual tests during month	766	100	54	66	109	66	71	42	99	50	109
c18	No. animals tested	2964	343	293	381	232	555	248	105	298	117	392
c23	No. animals TB tested since start of year	1285084	137229	89257	175596	148366	134626	99888	46248	181560	147314	157259
c19	No. animals TB tested in previous 12 months	1632184	169842	118057	224282	196437	165266	144504	64750	223274	178871	210627
c24	No. animals TB tested in previous 13-24 months	1596002	170153	115748	211430	190872	159968	142245	61743	219913	177466	204185
c25	No. animals TB tested in 2014	1607647	166775	117083	214500	191533	163019	143992	61764	225642	177959	207181
c22	No. animals TB tested in 2013	1620055	172322	114133	214509	197072	166287	140842	62228	224389	180893	210490
c20	No. animals TB tested in 2012	1643626	171497	112484	213785	196069	168531	143005	64217	229674	181839	219225
c21	No. animals TB tested in 2011	1607171	166267	113201	216348	189655	159143	140627	64863	225656	178272	210299
c26	No. animals TB tested in 2010	1583268	166196	112039	211330	192545	154720	137920	61908	226145	173568	198460

Month = September 2015

Ref		Total	Armagh	Ballymena	Coleraine	Dungannon	Enniskillen	Mallusk	L'derry	Newry	Nt'ards	Omagh
f1	No. of Officially Tuberculosis Free Herds (OTF)	26417	2601	1651	2941	3150	3370	2006	1084	4191	1975	3448
f2	No. of Officially Tuberculosis Suspended Herds (OTS)	1390	169	53	157	172	158	112	40	205	123	201
f3	No. of Officially Tuberculosis Withdrawn Herds (OTW)	1332	144	51	179	184	119	80	52	219	168	136
f4	% herds that are OTF	90.7	89.3	94.1	89.7	89.8	92.4	91.3	92.2	90.8	87.2	91.1
f5	% herds that are OTS	4.8	5.8	3.0	4.8	4.9	4.3	5.1	3.4	4.4	5.4	5.3
f6	% herds that are OTW	4.6	4.9	2.9	5.5	5.2	3.3	3.6	4.4	4.7	7.4	3.6

		Month = May 2015										
		(Data lagged by 4 months)										
Ref		Total	Armagh	Ballymena	Coleraine	Dungannon	Enniskillen	Mallusk	L'derry	Newry	Nt'ards	Omagh
e19	Num. TB culture positive animals that were not TB reactors in last 12 months	609	58	38	76	60	38	43	15	108	92	81
e20	Num. TB culture positive animals that were not TB reactors in last 13-24 months	524	66	39	26	86	27	37	8	110	70	55
e6	Num. TB culture positive animals that were not TB reactors in 2014	575	68	37	54	66	38	53	12	100	80	67
e2	Num. TB culture positive animals that were not TB reactors in 2013	583	63	33	32	98	28	30	7	131	92	69
e3	Num. TB culture positive animals that were not TB reactors in 2012	600	62	32	48	66	32	31	9	155	91	74
e4	Num. TB culture positive animals that were not TB reactors in 2011	558	69	40	42	47	31	25	5	154	77	68
e5	Num. TB culture positive animals that were not TB reactors in 2010	567	86	36	51	54	37	36	5	108	95	59
e21	No. herds with TB culture positive animals that were not TB reactors in last 12 months	390	40	24	54	41	26	22	13	64	61	45
e22	No. herds with TB culture positive animals that were not TB reactors in last 13-24 months	375	53	19	23	56	23	22	7	73	55	44
e12	No. herds with TB culture positive animals that were not TB reactors in 2014	372	47	25	37	48	27	27	10	66	51	34
e8	No. herds with TB culture positive animals that were not TB reactors in 2013	381	50	14	30	46	20	20	5	83	60	53
e9	No. herds with TB culture positive animals that were not TB reactors in 2012	401	46	17	35	48	25	23	9	82	67	49
e10	No. herds with TB culture positive animals that were not TB reactors in 2011	363	48	17	31	32	27	17	3	87	56	45
e11	No. herds with TB culture positive animals that were not TB reactors in 2010	379	50	17	36	36	32	25	5	77	61	40
e23	% of TB animals that were TB culture positive that were not TB reactors in last 12 months	5.8	7.6	8.8	5.7	6.2	2.9	10.4	6.9	5.6	6.3	5.1
e24	% of TB animals that were TB culture positive that were not TB reactors in last 13-24 months	6.1	9.2	4.7	4.2	14.6	2.3	12.2	8.3	6.5	4.5	5.2
e18	% of TB animals that were TB culture positive that were not TB reactors in 2014	6.1	10.4	8.3	5.0	8.7	2.9	13.1	8.9	5.2	5.4	5.5
e14	% of TB animals that were TB culture positive that were not TB reactors in 2013	6.6	7.1	4.2	4.4	13.4	2.2	9.0	9.1	8.4	6.4	6.5
e15	% of TB animals that were TB culture positive that were not TB reactors in 2012	5.2	7.1	12.5	5.1	6.8	1.6	4.7	5.7	8.2	5.4	3.5
e16	% of TB animals that were TB culture positive that were not TB reactors in 2011	6.4	7.9	12.2	6.6	7.5	3.3	12.8	4.0	7.2	4.2	6.7
e17	% of TB animals that were TB culture positive that were not TB reactors in 2010	8.1	12.9	15.3	7.1	10.4	3.7	8.9	5.6	7.1	9.6	7.2

		Month = May 2015										
Ref	(Data lagged by 4 months)	Total	Armagh	Ballymena	Coleraine	Dungannon	Enniskillen	Mallusk	L'derry	Newry	Nt'ards	Omagh
g31	No. of confirmed TB reactors during last 12 months	5000	408	224	770	457	591	184	128	760	716	762
g32	No. of confirmed TB reactors during last 13-24 months	3697	321	451	289	225	445	106	52	579	732	497
g6	No. of confirmed TB reactors 2014	4346	294	229	591	392	561	156	84	725	722	592
g2	No. of confirmed TB reactors 2013	3765	377	422	373	255	520	116	40	541	636	485
g3	No. of confirmed TB reactors 2012	4836	339	131	416	429	821	241	83	698	730	948
g4	No. of confirmed TB reactors 2011	3867	382	134	294	230	495	72	73	809	818	560
g5	No. of confirmed TB reactors 2010	2828	206	101	378	203	455	197	36	517	398	337
g33	Total animals with confirmed TB during last 12 months	5609	466	262	846	517	629	227	143	868	808	843
g34	Total animals with confirmed TB in last 13-24 months	4221	387	490	315	311	472	143	60	689	802	552
g12	Total animals with confirmed TB in 2014	4921	362	266	645	458	599	209	96	825	802	659
g8	Total animals with confirmed TB in 2013	4348	440	455	405	353	548	146	47	672	728	554
g9	Total animals with confirmed TB in 2012	5436	401	163	464	495	853	272	92	853	821	1022
g10	Total animals with confirmed TB in 2011	4425	451	174	336	277	526	97	78	963	895	628
g11	Total animals with confirmed TB in 2010	3395	292	137	429	257	492	233	41	625	493	396
g35	Confirmed TB animal prevalence in last 12 months (%)	0.344	0.275	0.223	0.382	0.266	0.384	0.158	0.225	0.388	0.453	0.402
g36	Confirmed TB animal prevalence in last 13-24 months (%)	0.263	0.228	0.423	0.148	0.162	0.294	0.101	0.097	0.311	0.452	0.268
g18	Confirmed TB animal prevalence in 2014 (%)	0.306	0.217	0.227	0.301	0.239	0.367	0.145	0.155	0.366	0.451	0.318
g14	Confirmed TB animal prevalence in 2013 (%)	0.268	0.255	0.399	0.189	0.179	0.330	0.104	0.076	0.299	0.402	0.263
g15	Confirmed TB animal prevalence in 2012 (%)	0.331	0.234	0.145	0.217	0.252	0.506	0.190	0.143	0.371	0.452	0.466
g16	Confirmed TB animal prevalence in 2011 (%)	0.275	0.271	0.154	0.155	0.146	0.331	0.069	0.120	0.427	0.502	0.299
g17	Confirmed TB animal prevalence in 2010 (%)	0.214	0.176	0.122	0.203	0.133	0.318	0.169	0.066	0.276	0.284	0.200
g37	No. herds with confirmed TB in last 12 months	1777	138	104	267	178	213	76	55	270	216	260
g38	No. herds with confirmed TB in last 13-24 months	1573	152	144	143	151	184	80	33	271	198	217
g24	No. herds with confirmed TB in 2014	1606	126	123	199	171	181	85	50	253	195	223
g20	No. herds with confirmed TB in 2013	1648	157	120	174	144	210	77	29	293	206	238
g21	No. herds with confirmed TB in 2012	1739	148	69	183	161	223	77	52	292	230	304
g22	No. herds with confirmed TB in 2011	1392	138	63	160	116	177	43	38	277	184	196
g23	No. herds with confirmed TB in 2010	1230	120	62	165	111	157	70	24	218	167	136
g39	Confirmed TB herd prevalence in last 12 months (%)	7.58	6.05	7.38	10.35	6.24	6.86	4.59	6.24	7.33	11.30	8.44
g40	Confirmed TB herd prevalence in last 13-24 months (%)	6.79	6.72	10.41	5.62	5.32	6.01	4.88	3.75	7.45	10.53	7.11

g30	Confirmed TB herd prevalence in 2014 (%)	6.94	5.54	8.82	7.99	6.04	5.94	5.24	5.62	6.92	10.31	7.31
g26	Confirmed TB herd prevalence in 2013 (%)	7.17	7.02	8.87	6.88	5.08	6.88	4.84	3.32	8.10	11.06	7.86
g27	Confirmed TB herd prevalence in 2012 (%)	7.53	6.60	5.04	7.28	5.69	7.27	4.74	5.98	8.03	12.23	9.94
g28	Confirmed TB herd prevalence in 2011 (%)	6.03	6.28	4.54	6.23	4.13	5.77	2.62	4.31	7.55	10.18	6.41
g29	Confirmed TB herd prevalence in 2010 (%)	5.43	5.53	4.47	6.43	3.95	5.12	4.26	2.72	5.98	9.24	4.45

Explanatory Comments for Tuberculosis Statistics - B. Testing Herds

Ref	Data Title	Explanation
B16	No. herds with any test completed in month	Test of any disease status and size (herd or animal-level). Tests with no animals are excluded.
B17	No. herds with any test, from start of year	Test of any disease status and size (herd or animal-level) carried out on a herd since 1st January. Tests with no animals are excluded.
B29	All herds with any test, from start of year	Skin test of any disease status and size (herd or animal-level) carried out on a herd since 1st January. Tests with no animals are included.
B18	No. herds with any test, from start of year (no cattle)	Herd or individual test of any disease status (routine, risk or restricted) where no cattle were recorded at all such tests since 1st January.
B19	No. herds with herd test completed in month	Herd level test of any disease status (routine, risk or restricted) completed during the above month. Tests with no animals are excluded.
B20	No. herds with herd test, from start of year	Herd level test of any disease status (routine, risk or restricted) completed since 1st January. Tests with no animals are excluded.
B30	All herds with herd test, from start of year	Herd level test of any disease status (routine, risk or restricted) completed since 1st January. Tests with no animals are included.
B21	No. herds with herd test, from start of year (no cattle)	Herd level test of any disease status (routine, risk or restricted) where no cattle were recorded at all such herd tests since 1st January.
B22	No. herds with herd test during last 12 months	Herd level test of any disease status (routine, risk or restricted) completed in the 12 month period from the above month. Tests with no animals are excluded.
B31	No. herds with herd test during last 13-24 months	Herd level test of any disease status (routine, risk or restricted) completed in the 13-24 months from the above month. Tests with no animals are excluded.
B39	No. herds with herd test during the year	Herd level test of any disease status (routine, risk or restricted) completed in the calendar year. Tests with no animals are excluded.
B32	No. herds with herd test during the year	Herd level test of any disease status (routine, risk or restricted) completed in the calendar year. Tests with no animals are excluded.
B28	No. herds with herd test during the year	Herd level test of any disease status (routine, risk or restricted) completed in the calendar year. Tests with no animals are excluded.
B23	No. herds with herd test during the year	Herd level test of any disease status (routine, risk or restricted) completed in the calendar year. Tests with no animals are excluded.
B24	No. herds with herd test during the year	Herd level test of any disease status (routine, risk or restricted) completed in the calendar year. Tests with no animals are excluded.
B25	No. herds with any risk test completed	Herd has had a herd or individual level risk test since start of calendar year and number tested > 0.
B26	No. herds with herd risk test completed	Herd has had a herd level risk test since start of calendar year and number tested > 0.
B27	No. herds with restricted herd test completed	Herd has had a restricted herd test (RHT, RH1, RH2) since start of calendar year and number tested > 0.

Explanatory Comments for Tuberculosis Statistics - C. Testing Animals

Ref	Data Title	Explanation
C1	Total number of tests in current month	Number of herds and individual tests performed in the month stated above. Tests with no animals are excluded.
C2	Total number of tests from start of year	From 1st January. Tests with no animals are excluded.
C3	No. tests during the same time period in the previous year	From 1st January of previous year. Tests with no animals are excluded.
C4	% change between years	Difference between the number of tests carried out during the current year and the number carried out in the previous expressed as a percentage.
C5	No. tests in the previous 12 months	Last 12 month period from the above month. Tests with no animals are excluded.
C6	No. animal tests in current month	Animal test = a count of the number of animals tested within each herd or individual test. Some animals may have been tested multiple times during the year.
C7	No. animal tests from start of year	Number of animal tests carried out since 1st January.
C8	No. animal tests during the same time period in the previous year	Number of animal tests carried out from 1st January in the previous year over the same time interval as recorded for the current year.
C9	% change between years	Difference between the number of animal tests during the current year and the number carried out in the previous expressed as a percentage.
C10	No. animal tests in previous 12 months	Last 12 month period from the above month.
C11	No. cattle eligible for TB testing	Based on the average number of animals presented at TB herd tests over last 4 years.
C12	No. cattle herds eligible for TB testing	Based on cattle being presented for a TB herd tests over last 4 years. Herds with '0' cattle are excluded.

C13	No. restricted herd tests during month	All restricted herd tests (RHT, RH1 and RH2) carried out during the above month.
C14	No. animals tested	Total of the animals reported as being tested within restricted herd tests (RHT, RH1, RH2) during the above month.
C15	No. herd tests during month	Total of the animals reported as being tested within all herd tests during the above month.
C16	No. animals tested	Total of the animals reported as being tested within all herd tests during the above month.
C17	No. individual tests during month	Total of the animals reported as being tested within all individual tests during the above month.
C18	No. animals tested	Total of the animals reported as being tested within all individual tests during the above month.
C23	No. animals TB tested since start of year	Animals identified as having had at least one TB skin test since the start of the calendar year. Due to the same animals being sampled in different DVO areas, the 'Total' is not the sum of the DVO figures.
C19	No. animals TB tested in previous 12 months	Animals identified as having had at least one TB skin test during the last 12 month period from the above month. Due to the same animals being sampled in different DVO areas, the 'Total' is not the sum of the DVO figures.
C24	No. animals TB tested in previous 13-24 months	Animals identified as having had at least one TB skin test during the last 13-24 months from the above month. Due to the same animals being sampled in different DVO areas, the 'Total' is not the sum of the DVO figures.
C26	No. animals TB tested in the year	Animals identified as having had at least one TB skin test during the calendar year. Due to the same animals being sampled in different DVO areas, the 'Total' is not the sum of the DVO figures.
C25	No. animals TB tested in the year	Animals identified as having had at least one TB skin test during the calendar year. Due to the same animals being sampled in different DVO areas, the 'Total' is not the sum of the DVO figures.
C22	No. animals TB tested in the year	Animals identified as having had at least one TB skin test during the calendar year. Due to the same animals being sampled in different DVO areas, the 'Total' is not the sum of the DVO figures.
C20	No. animals TB tested in the year	Animals identified as having had at least one TB skin test during the calendar year. Due to the same animals being sampled in different DVO areas, the 'Total' is not the sum of the DVO figures.
C21	No. animals TB tested in the year	Animals identified as having had at least one TB skin test during the calendar year. Due to the same animals being sampled in different DVO areas, the 'Total' is not the sum of the DVO figures.
Explanatory Comments for Tuberculosis Statistics - D. Results		
Ref	Data Title	Explanation
D1	No. of herds with TB reactors during month	A herd is included in this figure if the herd number had a TB skin test reactor during the above month.
D2	No. of new reactor herds during month	A herd is defined as being a TB reactor herd if it had at least one TB reactor animal in that month and no TB reactor animals during the previous 12 months.
D3	No. of new reactor herds since start of year	= Since 1st January
D4	No. of new reactor herds in the previous 12 months	Last 12 month period from the above month.
D26	No. of new reactor herds in previous 13-24 months	Last 13-24 month period from the above month.
D5	No. of TB reactor animals during month	A TB reactor animal is defined as an animal where the manual interpretation field for a skin test is positive ('P') with the first test date being taken as the time at which the animal became a reactor. Currently animals with lesions at routine slaughter (*LRS*) are not taken into account.
D6	No. of TB reactor animals since start of year	= Since 1st January
D7	No. of reactor animals in the previous 12 months	Last 12 month period from the above month.
D27	No. of reactor animals in previous 13-24 months	Last 13-24 month period from the above month.
D20	Cumulative herd incidence in year (%)	Number of NEW reactor herds since the start of the calendar year as a proportion of cattle herds which have presented cattle for a TB herd test during the same time period.
D9	Annual herd incidence over the last 12 months (%)	Number of NEW reactor herds during the last 12 months as a proportion of cattle herds which have presented cattle for a TB herd test during the same time period.
D28	Annual herd incidence over the last 13-24 months (%)	Number of NEW reactor herds during the last 13-24 months as a proportion of cattle herds which have presented cattle for a TB herd test during the same time period.
D38	In-year Herd Incidence (%)	Number of NEW reactor herds during the year as a proportion of cattle herds which have presented cattle for a TB herd test during the same time period.
D30	In-year Herd Incidence (%)	Number of NEW reactor herds during the year as a proportion of cattle herds which have presented cattle for a TB herd test during the same time period.
D16	In-year Herd Incidence (%)	Number of NEW reactor herds during the year as a proportion of cattle herds which have presented cattle for a TB herd test during the same time period.
D10	In-year Herd Incidence (%)	Number of NEW reactor herds during the year as a proportion of cattle herds which have presented cattle for a TB herd test during the same time period.
D11	In-year Herd Incidence (%)	Number of NEW reactor herds during the year as a proportion of cattle herds which have presented cattle for a TB herd test during the same time period.
D21	Cumulative animal incidence in year (%)	Number of reactor animals during the above month as a proportion of cattle which have been presented for a TB test during the same time period.
D12	Annual animal incidence over the last 12 months (%)	Number of reactor animals during the last 12 months as a proportion of cattle which have been presented for a TB test during the same time period.
D29	Annual animal incidence over the last 13-24 months (%)	Number of reactor animals during the last 13-24 months as a proportion of cattle which have been presented for a TB test during the same time period.

D39	In year Animal Incidence (%)	Number of reactor animals during the year as a proportion of cattle which have been presented for a TB herd test during the same time period.
D31	In year Animal Incidence (%)	Number of reactor animals during the year as a proportion of cattle which have been presented for a TB herd test during the same time period.
D15	In year Animal Incidence (%)	Number of reactor animals during the year as a proportion of cattle which have been presented for a TB herd test during the same time period.
D13	In year Animal Incidence (%)	Number of reactor animals during the year as a proportion of cattle which have been presented for a TB herd test during the same time period.
D14	In year Animal Incidence (%)	Number of reactor animals during the year as a proportion of cattle which have been presented for a TB herd test during the same time period.
D34	APT during current month	= The reactor disclosure rate per 1,000 animal tests current calendar month.
D22	APT since start of year	The reactor disclosure rate per 1,000 animal tests since the start of the calendar year.
D17	Current 12 month moving average APT	The reactor disclosure rate per 1,000 animal tests. Current refers to the rate over the last 12 months.
D42	In year APT	The reactor disclosure rate per 1,000 animal tests during the calendar year.
D40	In year APT	The reactor disclosure rate per 1,000 animal tests during the calendar year.
D32	In year APT	The reactor disclosure rate per 1,000 animal tests during the calendar year.
D18	In year APT	The reactor disclosure rate per 1,000 animal tests during the calendar year.
D19	In year APT	The reactor disclosure rate per 1,000 animal tests during the calendar year.
D23	No. negative in contacts since start of year	Number of animals taken as negative in contacts since the start of the year.
d46	No. Negative in contacts over last 12 months (%)	= Number of negative in contacts during the last 12 months
D43	No. negative in contacts during the year	Number of animals taken as negative in contacts during the year.
D41	No. negative in contacts during the year	Number of animals taken as negative in contacts during the year.
D33	No. negative in contacts during the year	Number of animals taken as negative in contacts during the year.
D24	No. negative in contacts during the year	Number of animals taken as negative in contacts during the year.
D25	No. negative in contacts during the year	Number of animals taken as negative in contacts during the year.
D37	Reactor removal time during the year	Figures given are median values for working days estimated from calendar days (calendar days multiplied by 0.685). Reactors which are not yet slaughtered or where they they were first declared as reactors at slaughter are excluded.
D45	Reactor removal time during the year	Figures given are median values for working days estimated from calendar days (calendar days multiplied by 0.685). Reactors which are not yet slaughtered or where they they were first declared as reactors at slaughter are excluded.
D35	Reactor removal time during the year	Figures given are median values for working days estimated from calendar days (calendar days multiplied by 0.685). Reactors which are not yet slaughtered or where they they were first declared as reactors at slaughter are excluded.
D44	Reactor removal time during the year	Figures given are median values for working days estimated from calendar days (calendar days multiplied by 0.685). Reactors which are not yet slaughtered or where they they were first declared as reactors at slaughter are excluded.
D36	Reactor removal time during the year	Figures given are median values for working days estimated from calendar days (calendar days multiplied by 0.685). Reactors which are not yet slaughtered or where they they were first declared as reactors at slaughter are excluded.

g35	Confirmed TB animal prevalence in last 12 months (%)	Number of TB reactors that were confirmed during the last 12 months by the presence of visible lesions at slaughter and/or by laboratory confirmation (histopathology and/or culture) plus the number of other animals where M. bovis was cultured from TB-like lesions found at slaughter during the last 12 months that were not identified as TB reactor animals divided by the number of animals tuberculin tested during the last 12 months expressed as a %
g36	Confirmed TB animal prevalence in last 13-24 months (%)	Number of TB reactors that were confirmed during the last 13-24 months by the presence of visible lesions at slaughter and/or by laboratory confirmation (histopathology and/or culture) plus the number of other animals where M. bovis was cultured from TB-like lesions found at slaughter during the last 13-24 months that were not identified as TB reactor animals divided by the number of animals tuberculin tested during the last 13-24 months expressed as a %
g18	Confirmed TB animal prevalence in year (%)	Number of TB reactors that were confirmed during the year by the presence of visible lesions at slaughter and/or by laboratory confirmation (histopathology and/or culture) plus the number of other animals where M. bovis was cultured from TB-like lesions found at slaughter during the year that were not identified as TB reactor animals divided by the number of animals tuberculin tested during the year expressed as a %
g14	Confirmed TB animal prevalence in year (%)	Number of TB reactors that were confirmed during the year by the presence of visible lesions at slaughter and/or by laboratory confirmation (histopathology and/or culture) plus the number of other animals where M. bovis was cultured from TB-like lesions found at slaughter during the year that were not identified as TB reactor animals divided by the number of animals tuberculin tested during the year expressed as a %
g15	Confirmed TB animal prevalence in year (%)	Number of TB reactors that were confirmed during the year by the presence of visible lesions at slaughter and/or by laboratory confirmation (histopathology and/or culture) plus the number of other animals where M. bovis was cultured from TB-like lesions found at slaughter during the year that were not identified as TB reactor animals divided by the number of animals tuberculin tested during the year expressed as a %
g16	Confirmed TB animal prevalence in year (%)	Number of TB reactors that were confirmed during the year by the presence of visible lesions at slaughter and/or by laboratory confirmation (histopathology and/or culture) plus the number of other animals where M. bovis was cultured from TB-like lesions found at slaughter during the year that were not identified as TB reactor animals divided by the number of animals tuberculin tested during the year expressed as a %
g17	Confirmed TB animal prevalence in year (%)	Number of TB reactors that were confirmed during the year by the presence of visible lesions at slaughter and/or by laboratory confirmation (histopathology and/or culture) plus the number of other animals where M. bovis was cultured from TB-like lesions found at slaughter during the year that were not identified as TB reactor animals divided by the number of animals tuberculin tested during the year expressed as a %
g37	No. herds with confirmed TB in last 12 months	Herds that had at least one confirmed TB animal during the last 12 months.
g38	No. herds with confirmed TB in last 13-24 months	Herds that had at least one confirmed TB animal during the last 13-24 months.
g24	No. herds with confirmed TB in year	Herds that had at least one confirmed TB animal during the year.
g20	No. herds with confirmed TB in year	Herds that had at least one confirmed TB animal during the year.
g21	No. herds with confirmed TB in year	Herds that had at least one confirmed TB animal during the year.
g22	No. herds with confirmed TB in year	Herds that had at least one confirmed TB animal during the year.
g23	No. herds with confirmed TB in year	Herds that had at least one confirmed TB animal during the year.
g39	Confirmed TB herd prevalence in last 12 months (%)	Number of herds that had at least one confirmed TB animal during the last 12 months divided the number of herds that presented cattle at a TB herd test expressed as a %.
g40	Confirmed TB herd prevalence in last 13-24 months (%)	Number of herds that had at least one confirmed TB animal during the last 13-24 months divided the number of herds that presented cattle at a TB herd test expressed as a %.
g30	Confirmed TB herd prevalence in year (%)	Number of herds that had at least one confirmed TB animal during the year divided the number of herds that presented cattle at a TB herd test expressed as a %.
g26	Confirmed TB herd prevalence in year (%)	Number of herds that had at least one confirmed TB animal during the year divided the number of herds that presented cattle at a TB herd test expressed as a %.
g27	Confirmed TB herd prevalence in year (%)	Number of herds that had at least one confirmed TB animal during the year divided the number of herds that presented cattle at a TB herd test expressed as a %.
g28	Confirmed TB herd prevalence in year (%)	Number of herds that had at least one confirmed TB animal during the year divided the number of herds that presented cattle at a TB herd test expressed as a %.
g29	Confirmed TB herd prevalence in year (%)	Number of herds that had at least one confirmed TB animal during the year divided the number of herds that presented cattle at a TB herd test expressed as a %.