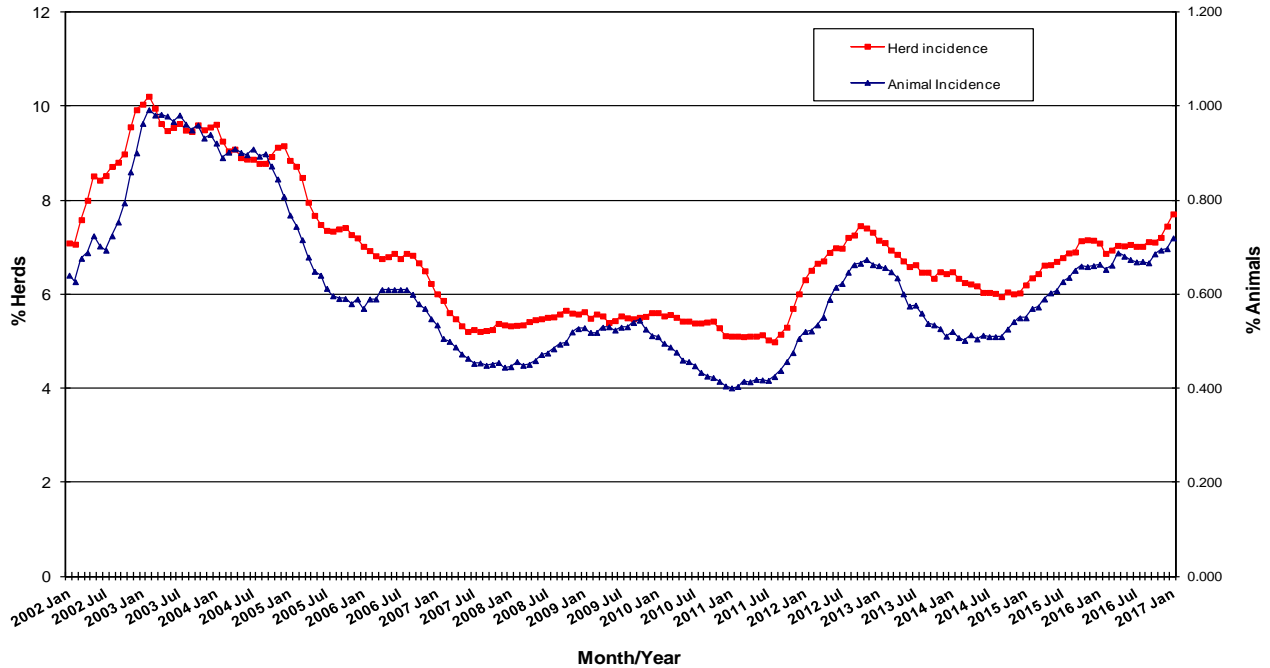
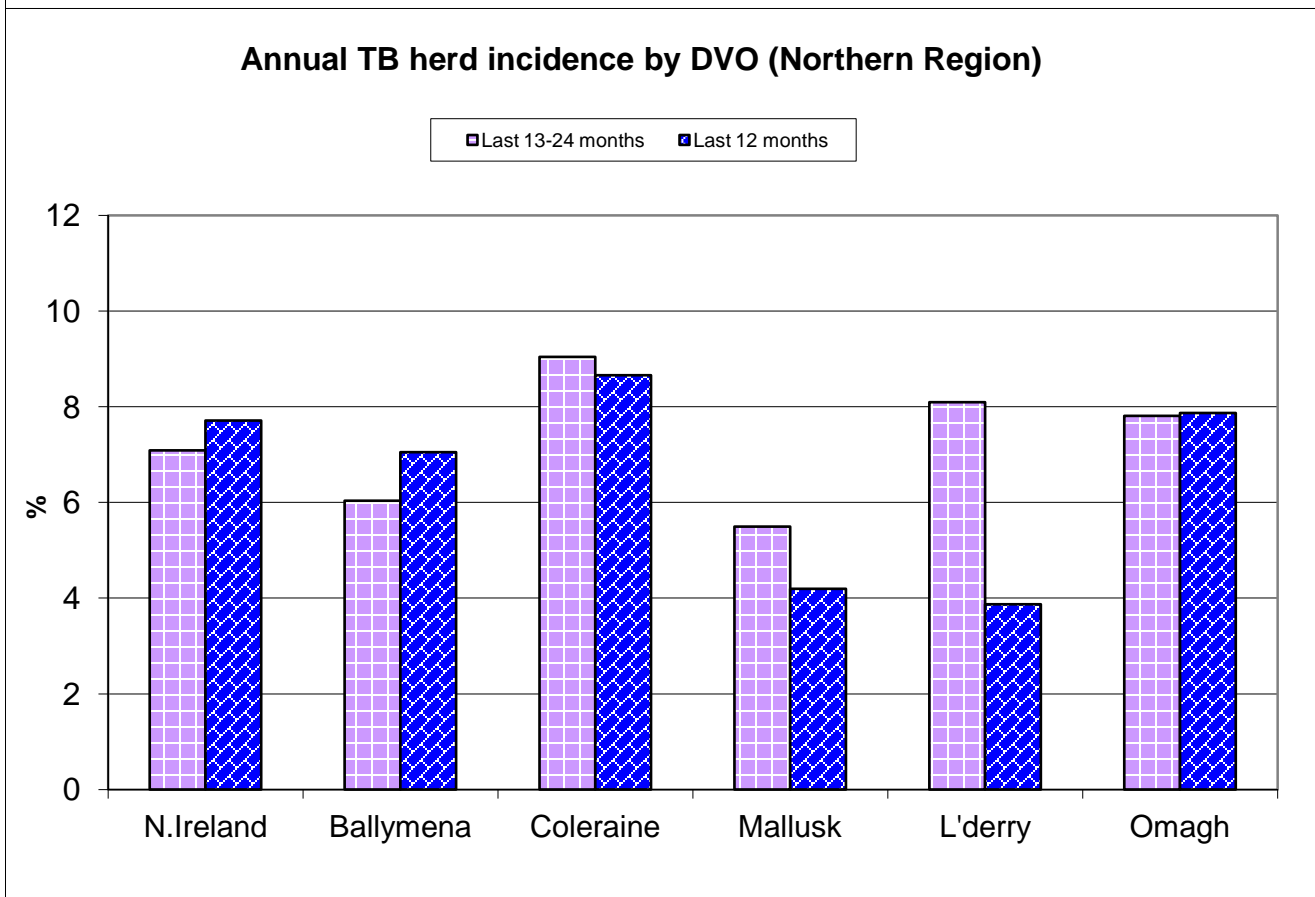
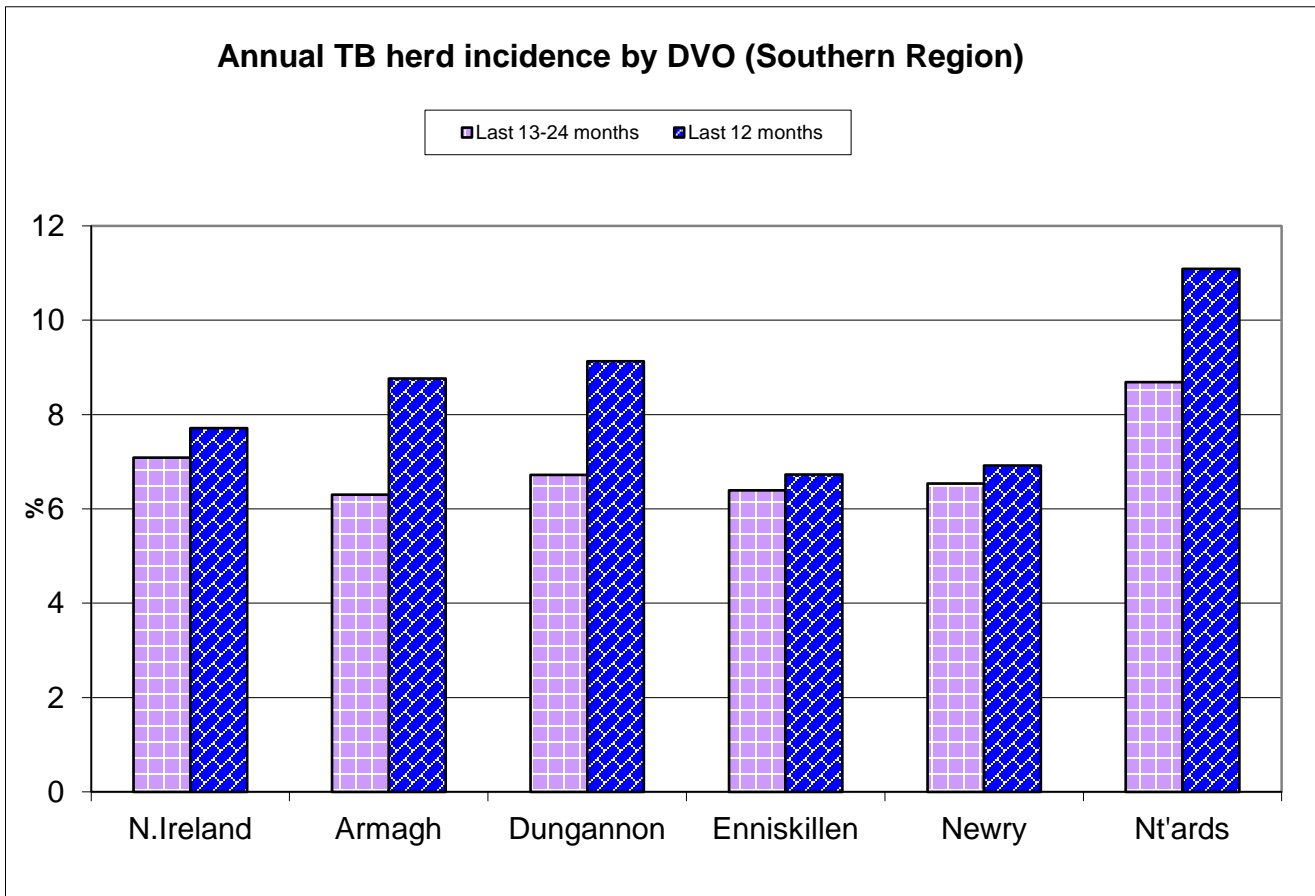


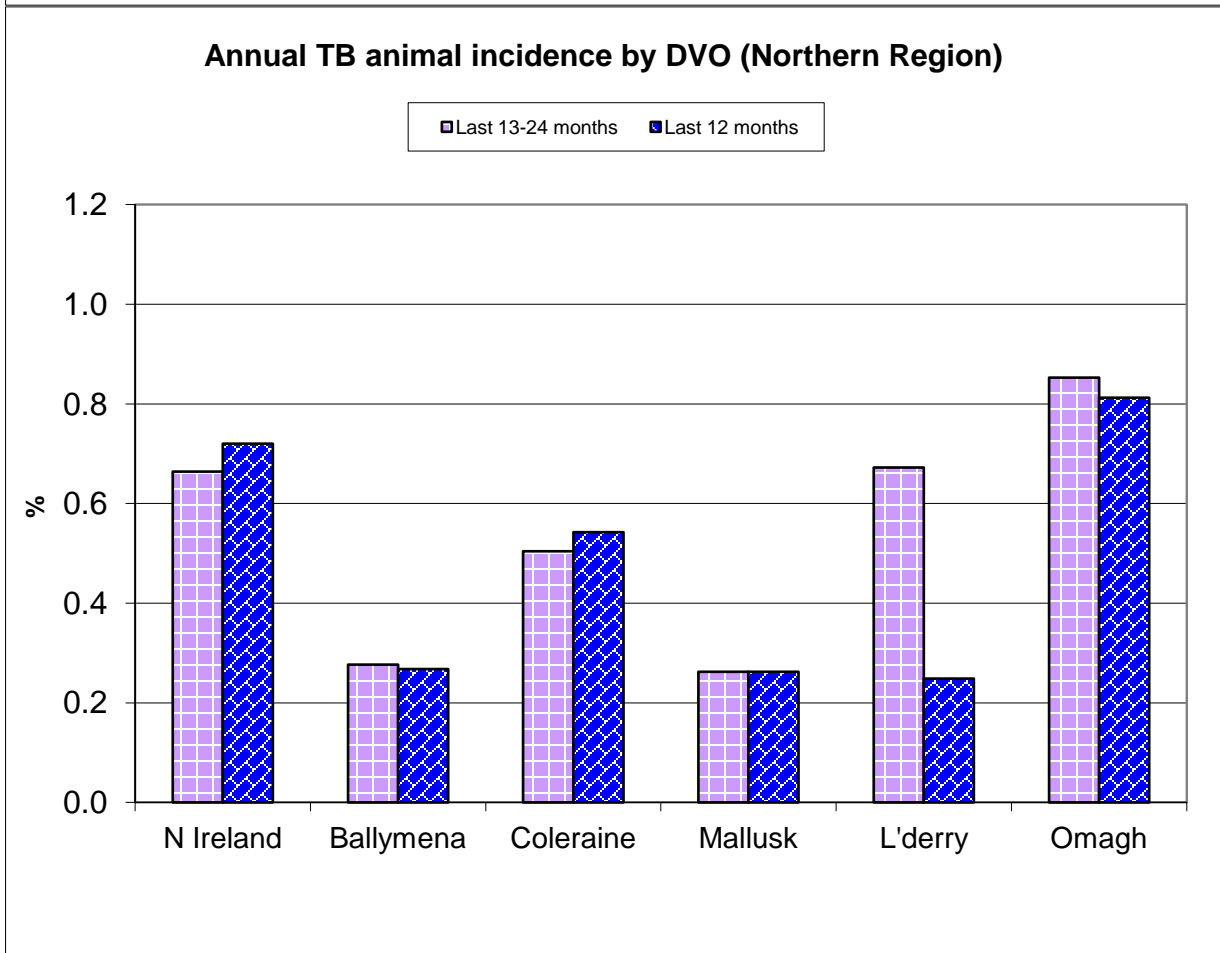
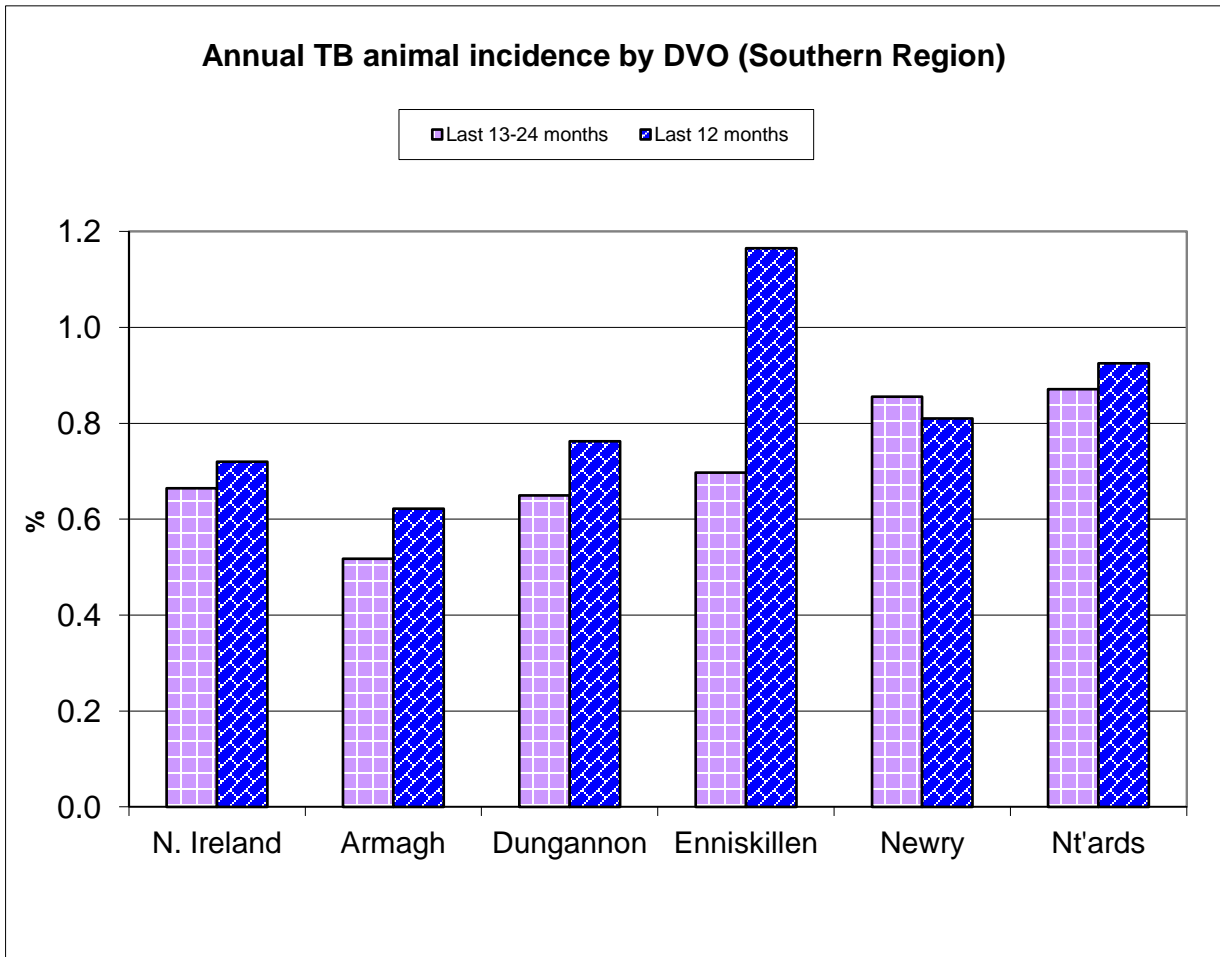
**Tuberculosis: Statistics for January 2017**

<b>Tests Completed</b>	Herds	<a href="#">Number of herds tested (any test), by DVO</a>	<a href="#">Cumulative Statistics</a>	
		<a href="#">Number of herds with herd-level test, by DVO</a>	<a href="#">Cumulative Statistics</a>	
		<a href="#">Number of herds with any risk test, by DVO</a>		
		<a href="#">Number of herds with herd-level risk test, by DVO</a>		
		<a href="#">Number of herds with herd-level restricted test, by DVO</a>		
	Animals	<a href="#">Total number of tests performed, by DVO</a>	<a href="#">Cumulative Statistics</a>	
		<a href="#">Total number of animals tests, by DVO</a>	<a href="#">Cumulative Statistics</a>	
		<a href="#">Total number of restricted herd tests, by DVO</a>	<a href="#">Number of animals tested</a>	
		<a href="#">Total number of herd tests, by DVO</a>	<a href="#">Number of animals tested</a>	
		<a href="#">Total number of individual tests, by DVO</a>	<a href="#">Number of animals tested</a>	
<a href="#">Total number of animals tested, by DVO</a>				
<b>Summary Statistics</b>		<a href="#">Herds with TB reactors during month, by DVO</a>	<a href="#">Cumulative Statistics</a>	<a href="#">APT</a>
		<a href="#">Number of new reactor herds, by DVO</a>	<a href="#">Cumulative Statistics</a>	<a href="#">Negative-in-contacts</a>
		<a href="#">Number of new reactor animals, by DVO</a>		<a href="#">Reactor removal times</a>
		<a href="#">Herd Prevalance</a>		
		<a href="#">Herd Incidence</a>		
		<a href="#">Animal Incidence</a>		
		<a href="#">Number of reactor animals by month and by DVO</a>		
		<a href="#">Number of new reactor herds by month and by DVO</a>		
		<a href="#">Total number of all reactor herds by DVO</a>		
<b>Summary Charts</b>		<a href="#">Current Animal Incidence Chart</a>	<a href="#">Monthly TB reactors chart</a>	<a href="#">Yearly Confirmed Herd Prevalence</a>
		<a href="#">Yearly Animal Incidence Chart</a>	<a href="#">New TB reactor herds</a>	<a href="#">Current Confirmed Herd Prevalence</a>
		<a href="#">Current Herd Incidence Chart</a>	<a href="#">TB Herd &amp; Animal Incidence</a>	
		<a href="#">Yearly Herd Incidence Chart</a>		

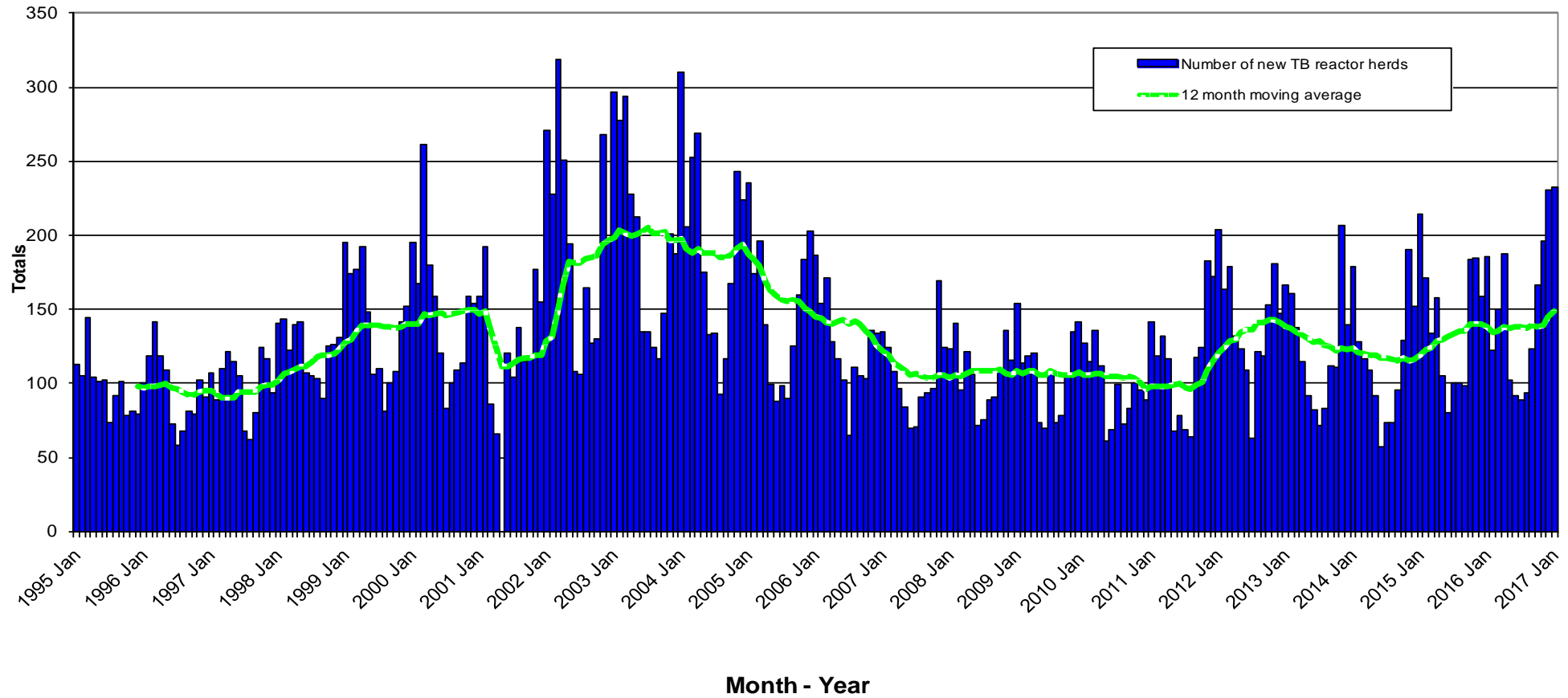
**TB Herd and Animal Incidence:  
(12 month moving average: January 2002 to January 2017)**



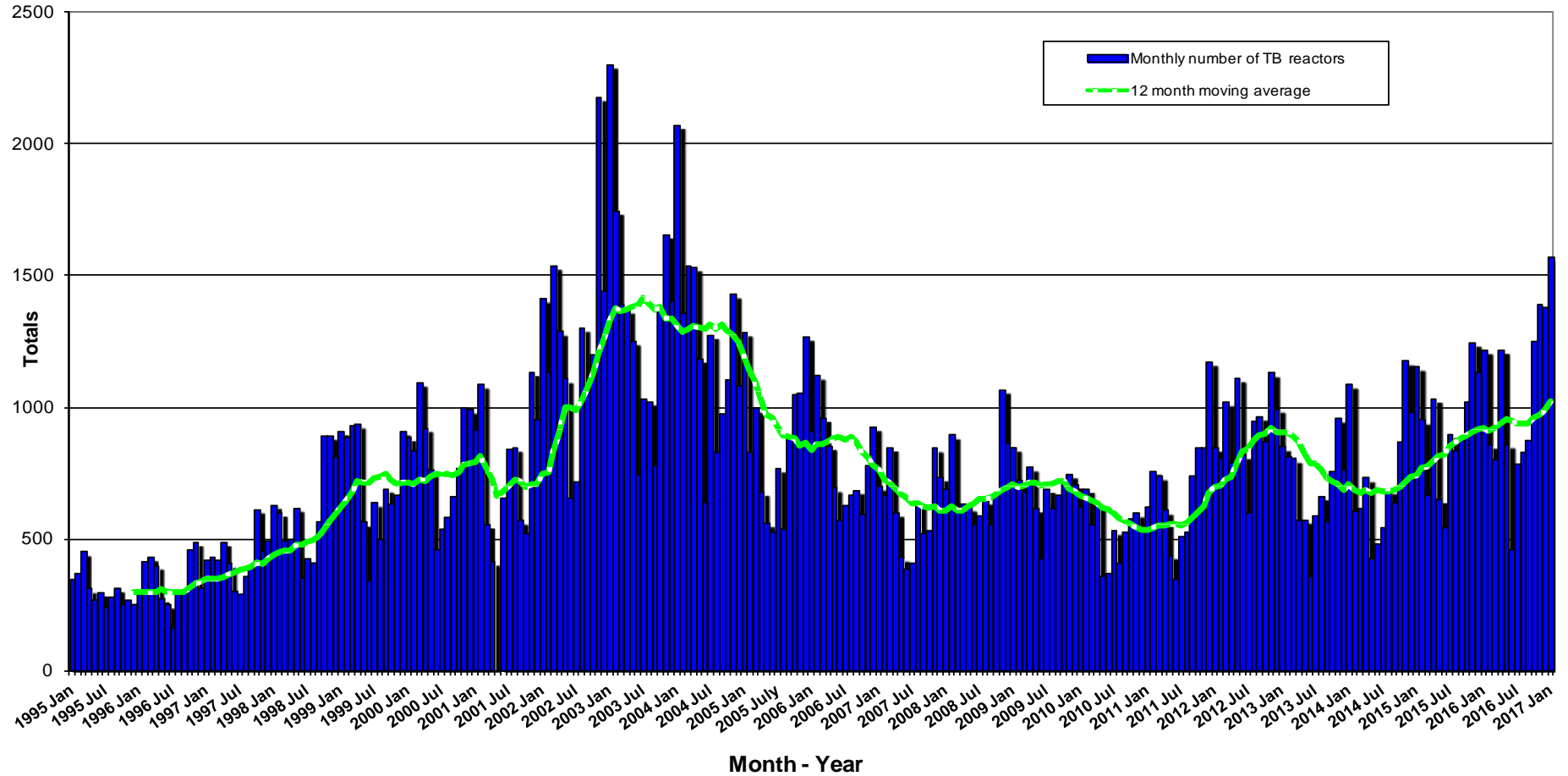




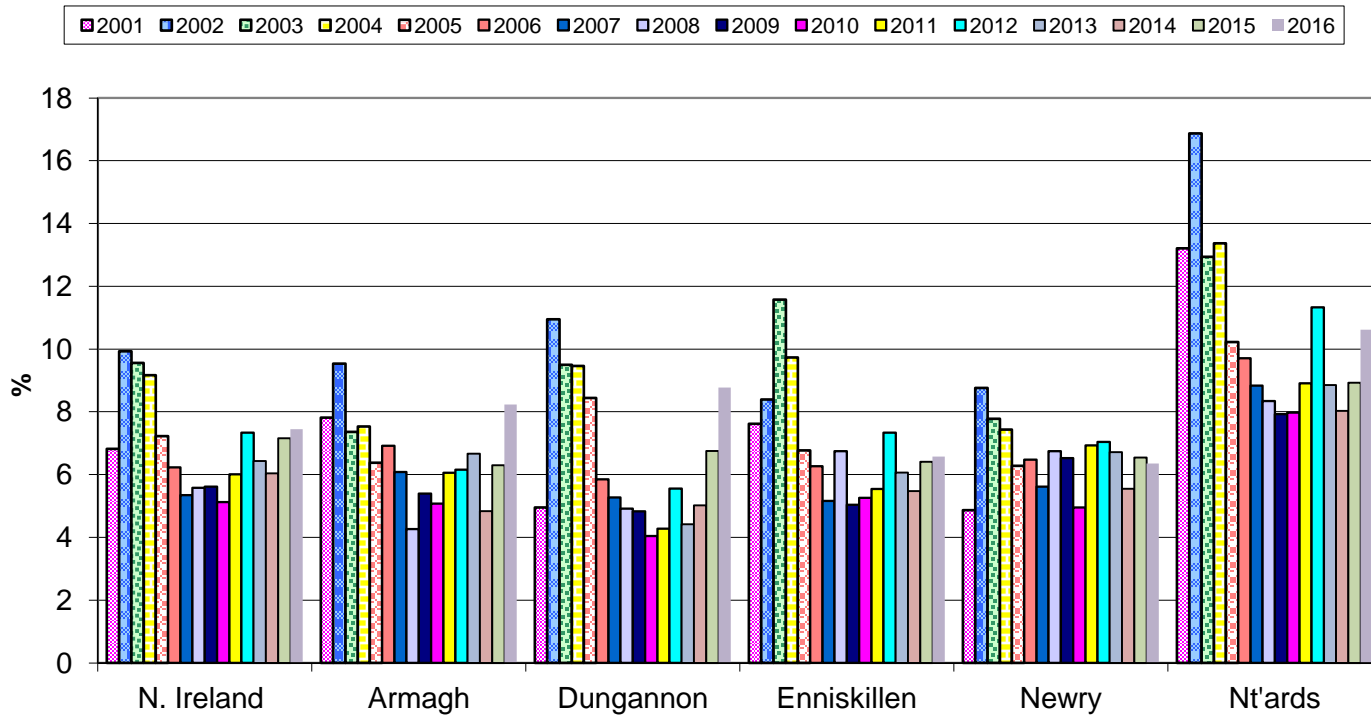
New TB Reactor Herds: January 1995 to January 2017



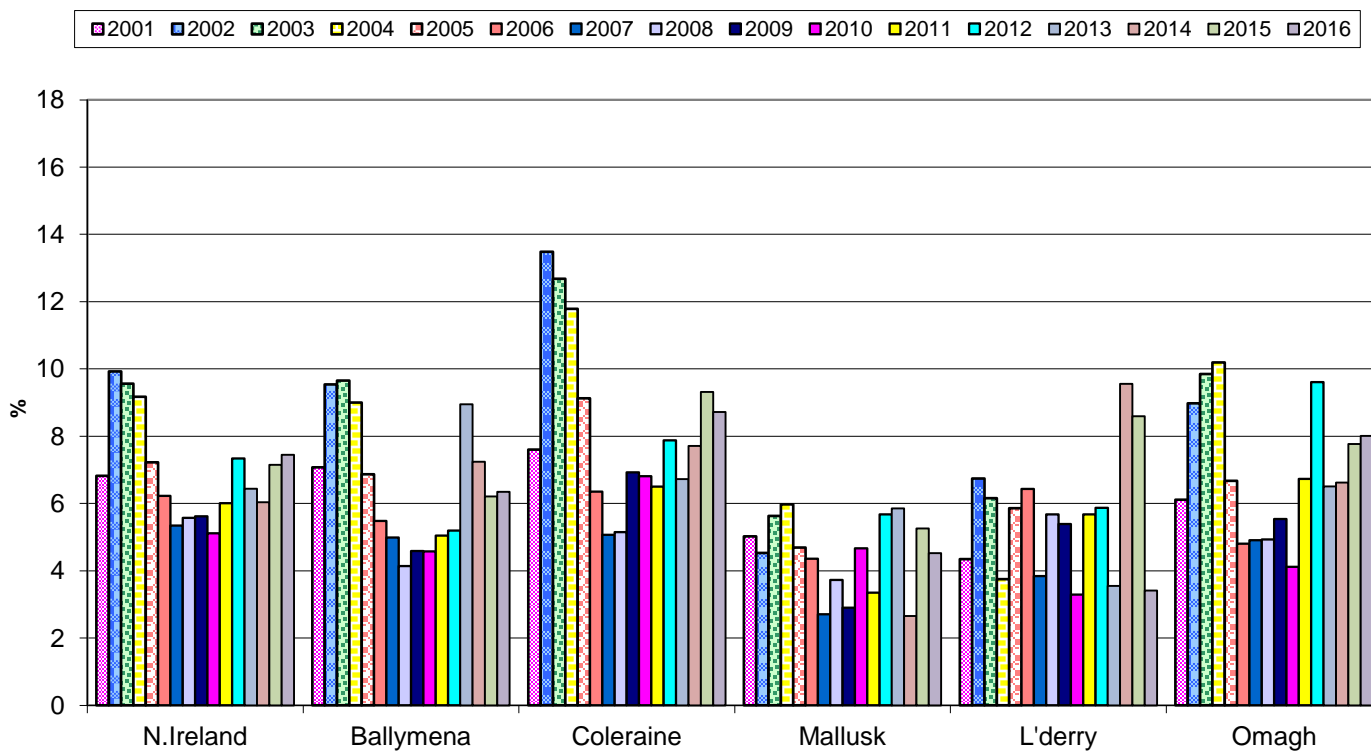
TB Reactors: January 1995 to January 2017

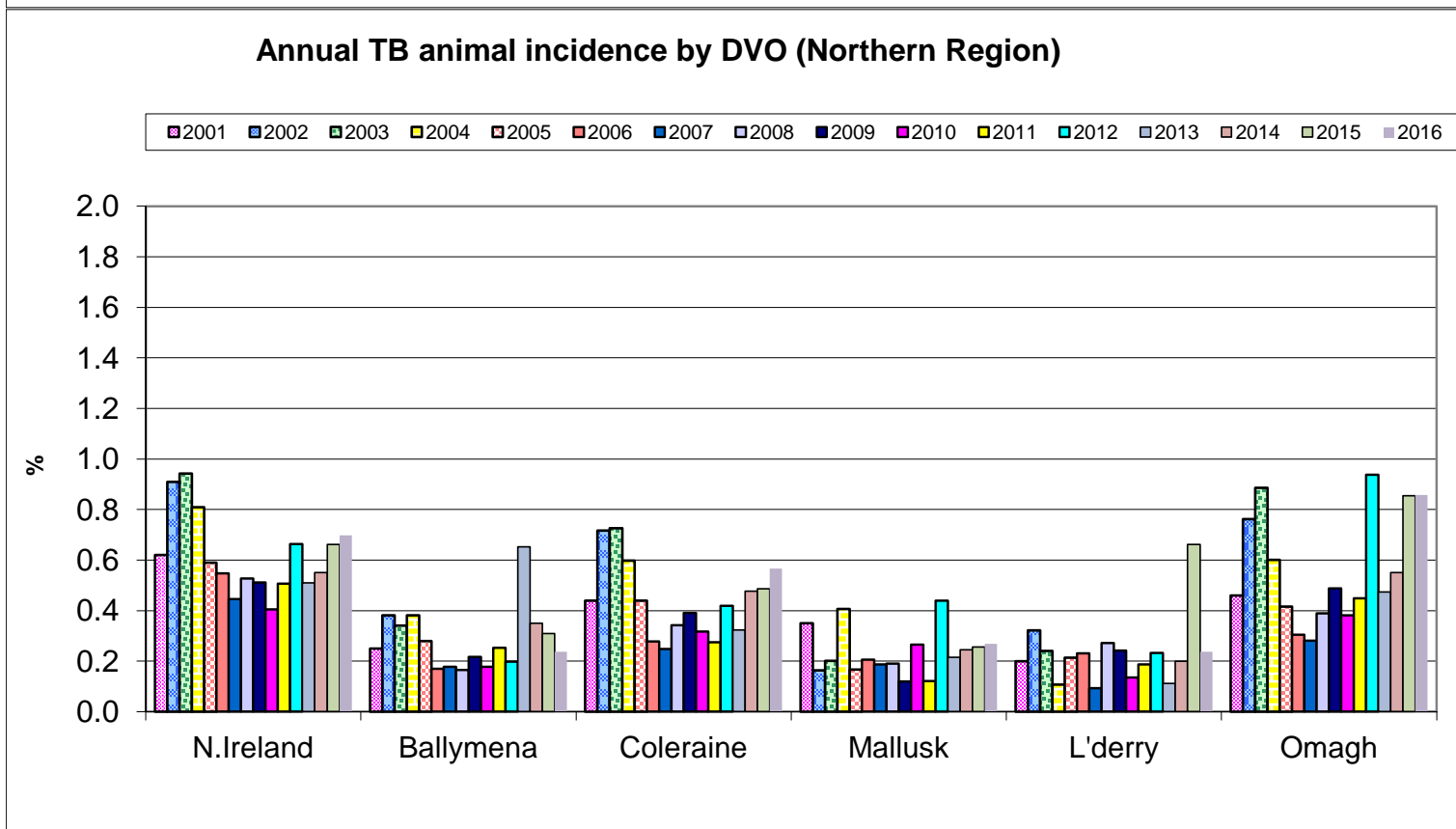
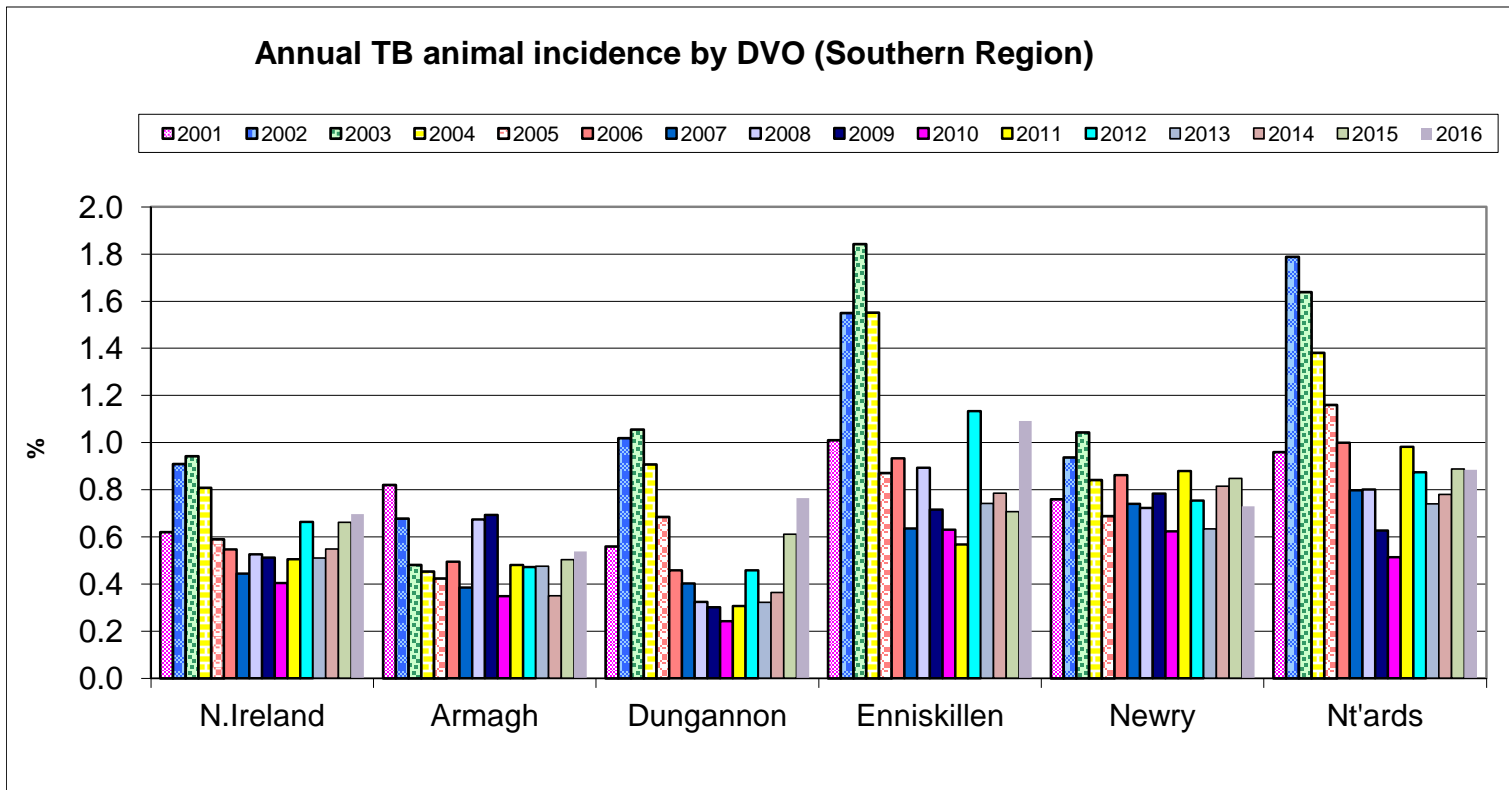


### Annual TB herd incidence by DVO (Southern Region)



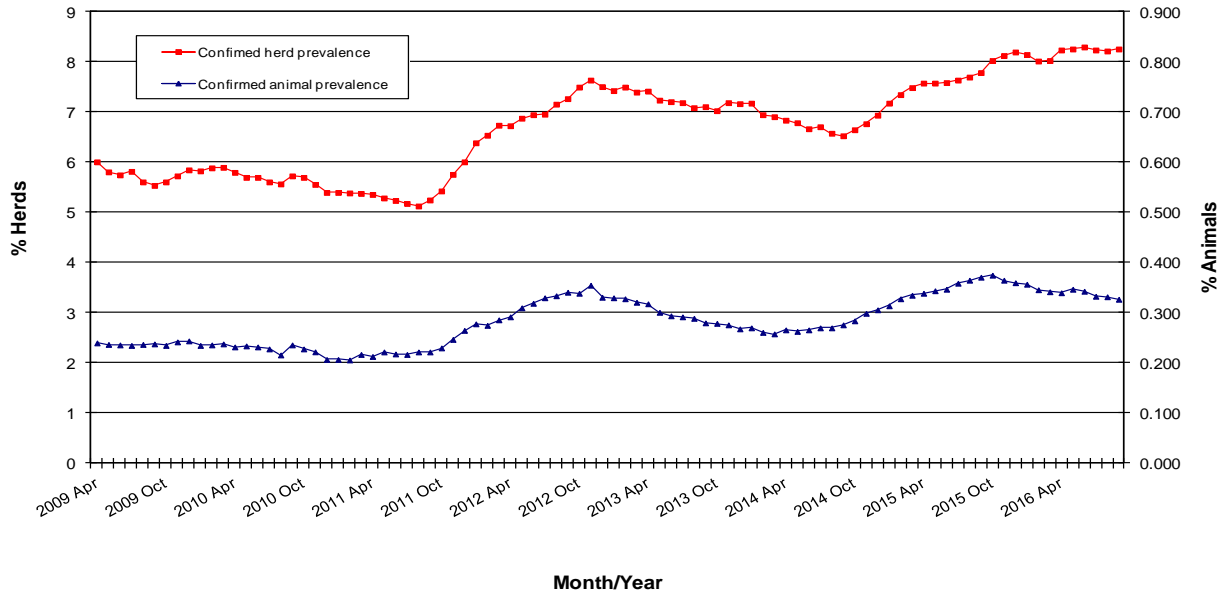
### Annual TB herd incidence by DVO (Northern Region)



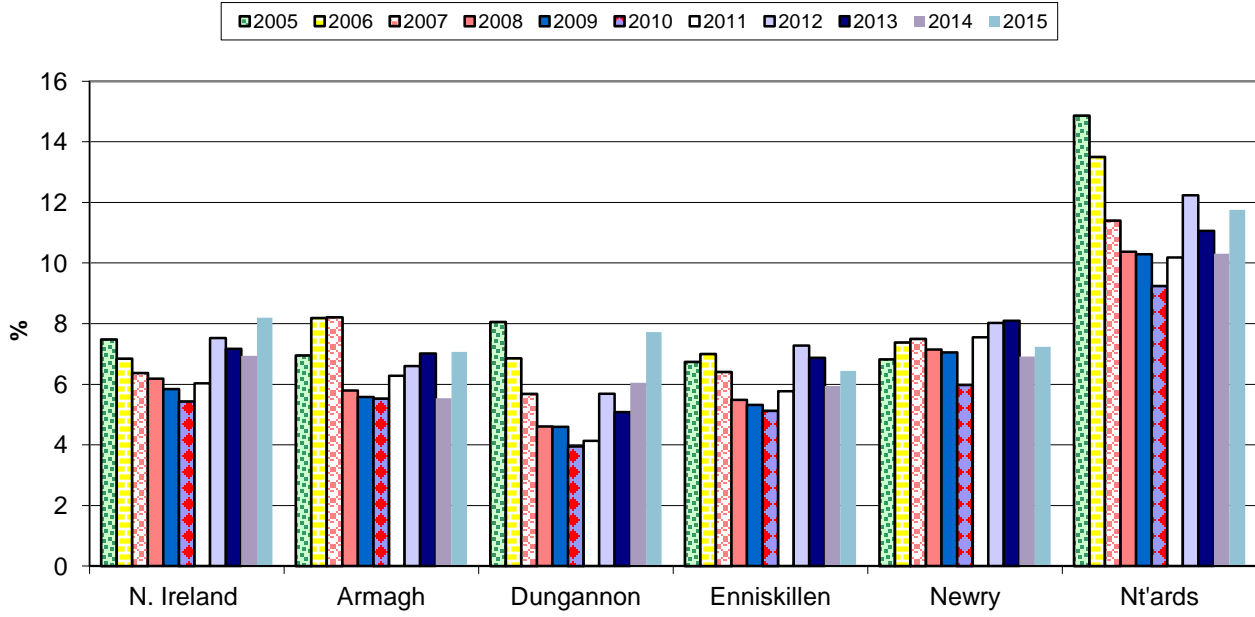




**TB Confirmed Herd<sup>^</sup> and Animal Prevalence:  
(12 month moving average: April 2009 to September 2016)**

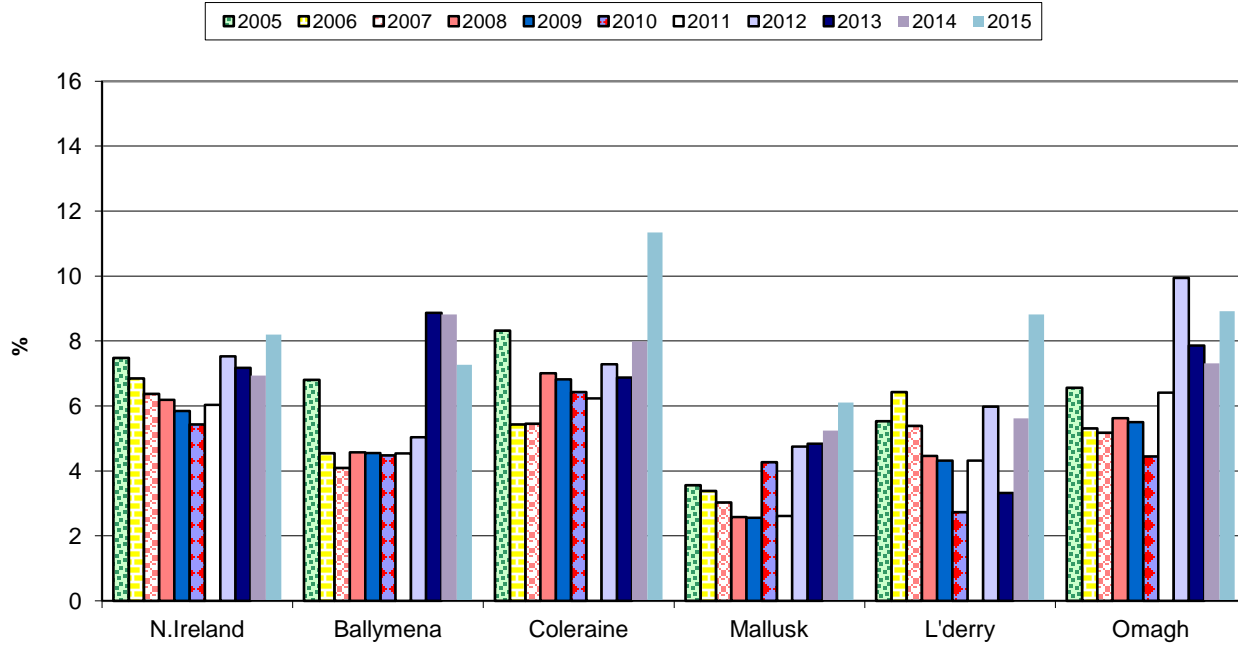


### Annual confirmed TB herd prevalence by DVO (Southern Region)

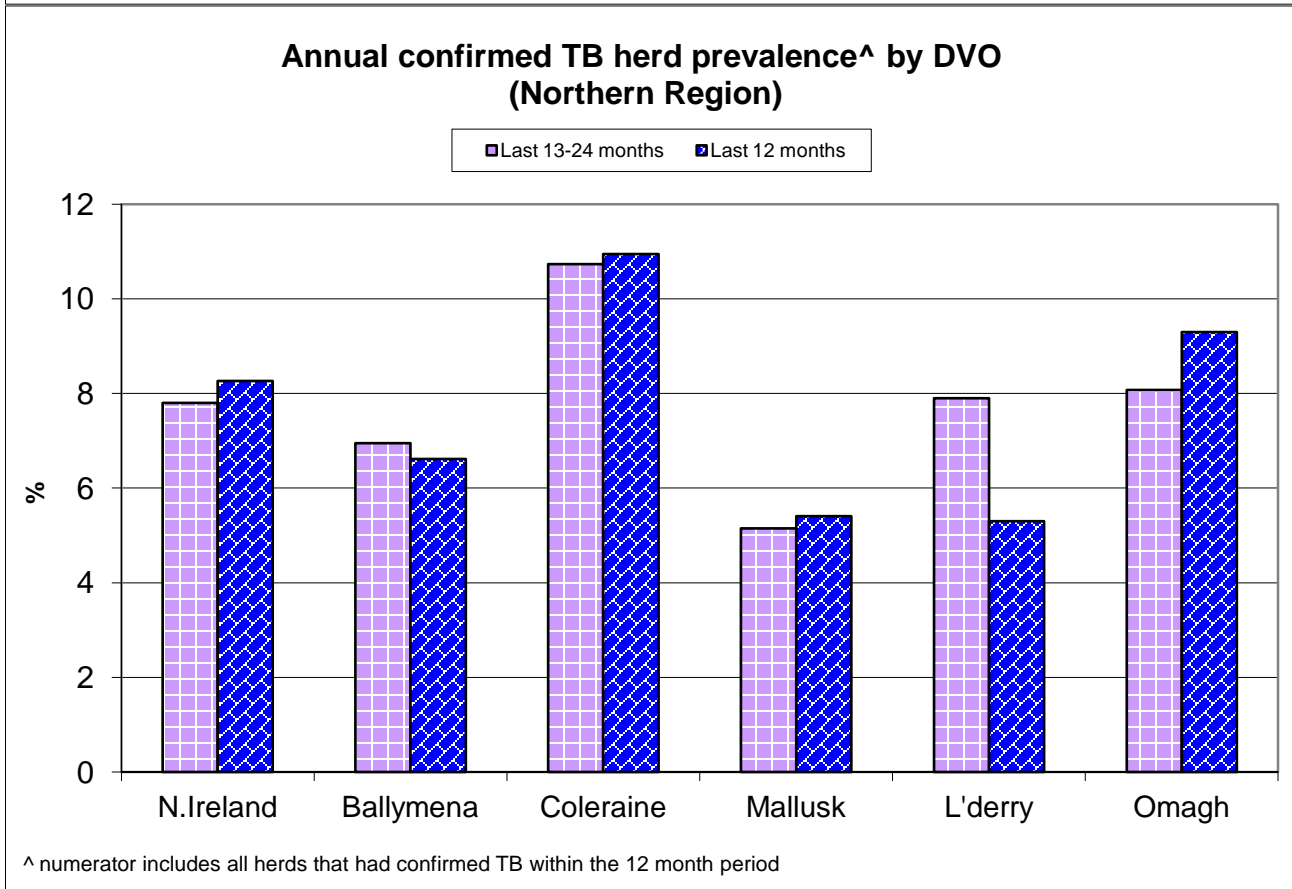
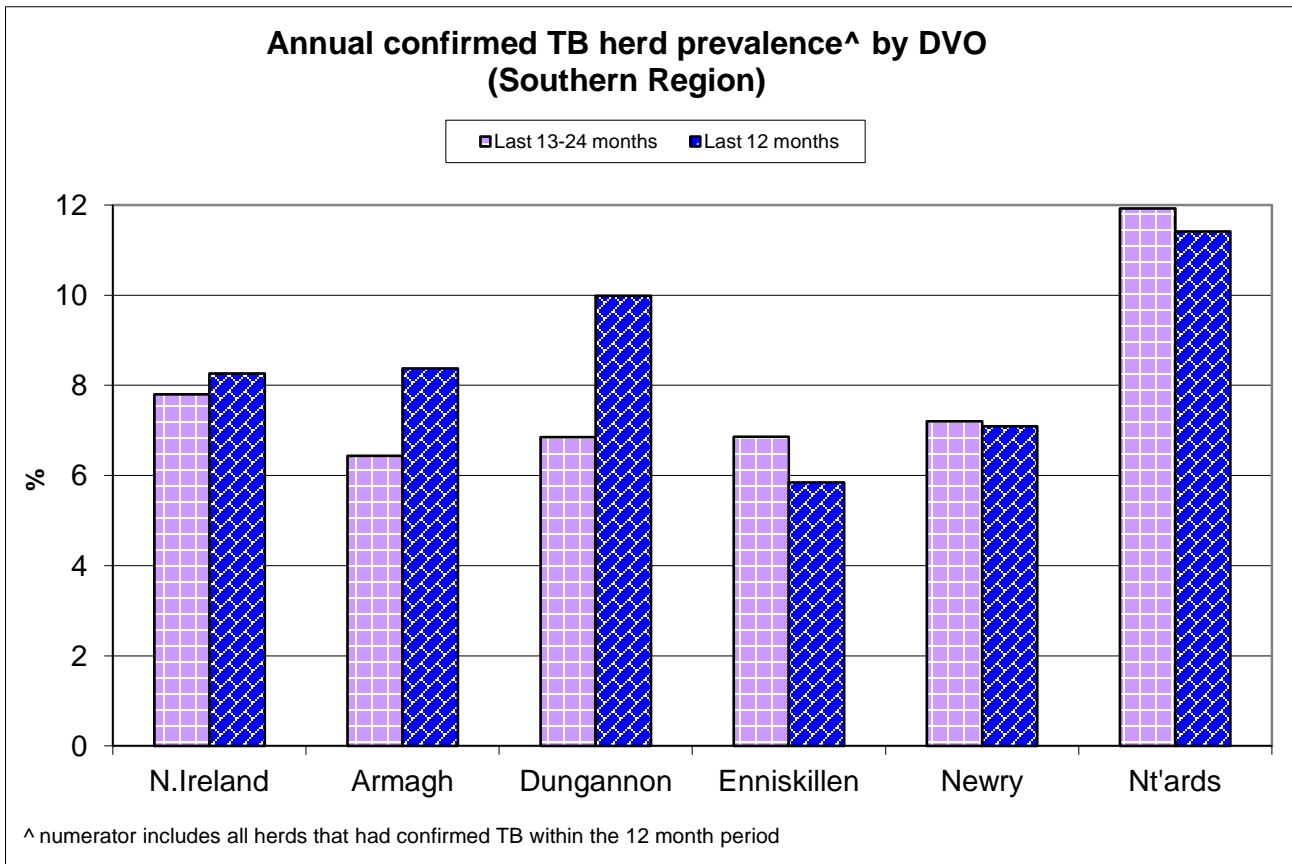


^ numerator includes all herds that had confirmed TB within the 12 month period

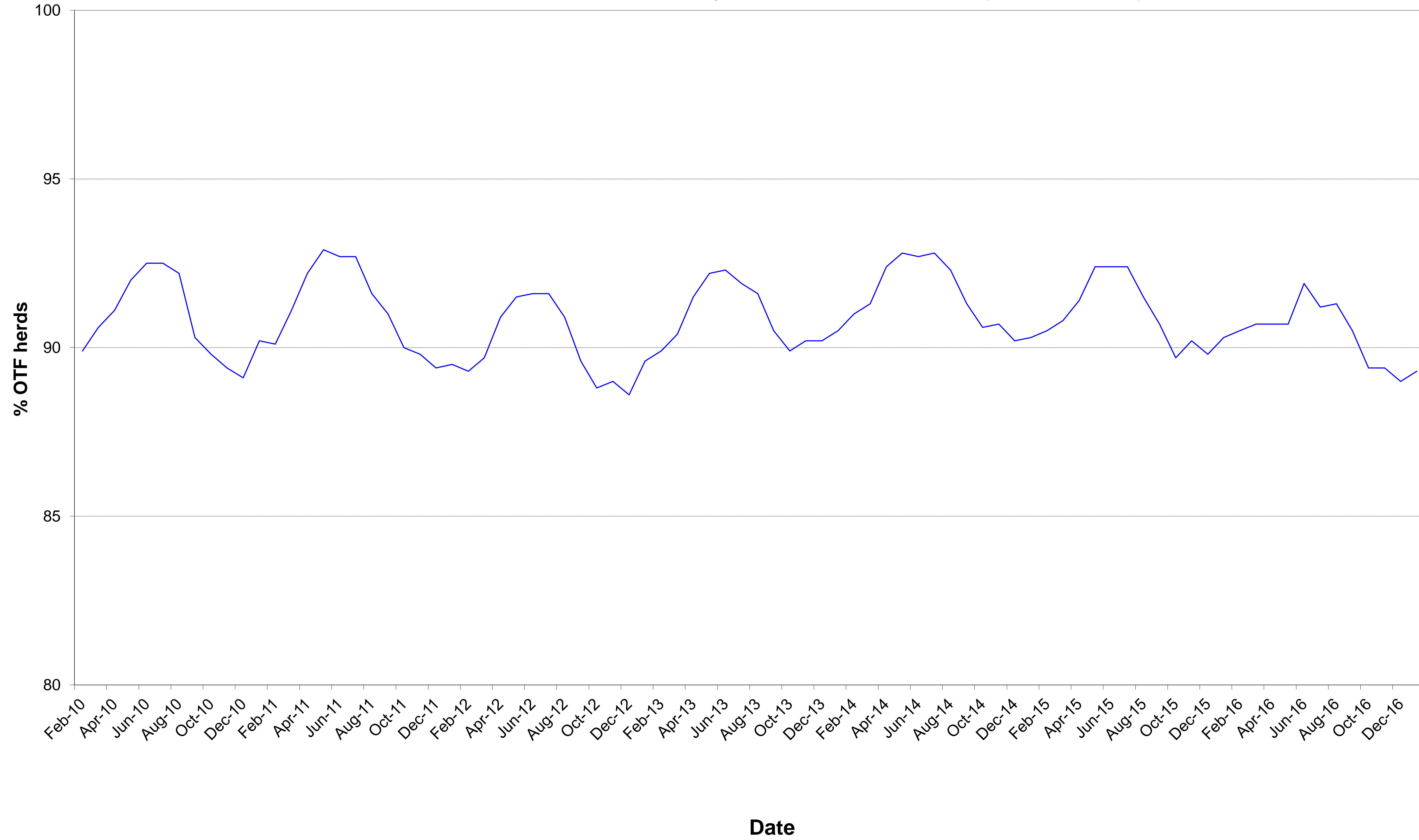
### Annual confirmed TB herd prevalence by DVO (Northern Region)



^ numerator includes all herds that had confirmed TB within the 12 month period



### % herds that are officially tuberculosis free (OTF herds)



**Month = January 2017**

Ref.	Total	Armagh	Ballymena	Coleraine	Dungannon	Enniskillen	Mallusk	L'derry	Newry	Nt'ards	Omagh	
d1	<b>No. of herds with TB reactors during month</b>	<b>378</b>	<b>51</b>	<b>28</b>	<b>39</b>	<b>51</b>	<b>29</b>	<b>12</b>	<b>10</b>	<b>63</b>	<b>52</b>	<b>43</b>
d2	<b>No. of new reactor herds during month</b>	<b>233</b>	<b>30</b>	<b>22</b>	<b>24</b>	<b>32</b>	<b>20</b>	<b>9</b>	<b>7</b>	<b>38</b>	<b>22</b>	<b>29</b>
d3	No. of new reactor herds since start of year	233	30	22	24	32	20	9	7	38	22	29
d4	No. of new reactor herds in the previous 12 months	1786	202	96	221	257	204	66	34	257	213	236
d26	No. of new reactor herds in the previous 13-24 months	1660	144	85	233	193	198	90	70	243	167	237
d5	<b>No. of TB reactor animals during month</b>	<b>1571</b>	<b>265</b>	<b>73</b>	<b>113</b>	<b>145</b>	<b>219</b>	<b>23</b>	<b>34</b>	<b>323</b>	<b>241</b>	<b>135</b>
d6	No. of TB reactor animals since start of year	1571	265	73	113	145	219	23	34	323	241	135
d7	No. of reactor animals in the previous 12 months	12278	1153	317	1262	1578	1982	384	168	1962	1698	1774
d27	No. of reactor animals in the previous 13-24 months	11067	894	331	1161	1301	1170	381	452	1979	1572	1826
d20	<b>Cumulative herd incidence in year (%)</b>	<b>6.57</b>	7.85	9.95	6.08	7.49	4.73	3.23	5.51	7.17	7.24	6.36
d9	<b>Annual herd incidence over the last 12 months (%)</b>	<b>7.71</b>	8.76	7.05	8.66	9.13	6.73	4.20	3.87	6.92	11.09	7.87
d28	<b>Annual herd incidence over the last 13-24 months (%)</b>	<b>7.09</b>	6.30	6.03	9.05	6.72	6.39	5.49	8.09	6.54	8.69	7.81
d11	<b>2016 Herd Incidence (%)</b>	<b>7.45</b>	8.23	6.34	8.72	8.77	6.58	4.52	3.41	6.35	10.62	8.01
d38	<b>2015 Herd Incidence (%)</b>	<b>7.15</b>	6.29	6.21	9.31	6.75	6.41	5.26	8.59	6.54	8.92	7.77
d30	<b>2014 Herd Incidence (%)</b>	<b>6.03</b>	4.84	7.24	7.71	5.02	5.48	5.24	4.83	5.55	8.03	6.62
d16	<b>2013 Herd Incidence (%)</b>	<b>6.44</b>	6.66	8.94	6.72	4.41	6.06	5.85	3.55	6.72	8.86	6.51
d10	<b>2012 Herd Incidence (%)</b>	<b>7.34</b>	6.15	5.19	7.88	5.55	7.34	5.67	5.87	7.04	11.33	9.61
d21	<b>Cumulative animal incidence in year (%)</b>	<b>0.532</b>	0.869	0.356	0.266	0.455	0.830	0.091	0.296	0.813	0.737	0.394
d12	<b>Annual animal incidence over the last 12 months (%)</b>	<b>0.720</b>	0.622	0.268	0.543	0.762	1.165	0.262	0.249	0.810	0.925	0.812
d29	<b>Annual animal incidence over the last 13-24 months (%)</b>	<b>0.664</b>	0.517	0.276	0.504	0.649	0.697	0.262	0.672	0.855	0.871	0.853
d14	<b>2016 Animal Incidence (%)</b>	<b>0.697</b>	0.539	0.237	0.567	0.765	1.092	0.269	0.238	0.731	0.885	0.857
d39	<b>2015 Animal Incidence (%)</b>	<b>0.661</b>	0.504	0.310	0.486	0.612	0.707	0.256	0.661	0.848	0.889	0.855
d31	<b>2014 Animal Incidence (%)</b>	<b>0.550</b>	0.350	0.349	0.476	0.364	0.786	0.244	0.199	0.815	0.781	0.551

d15	<b>2013 Animal Incidence (%)</b>	<b>0.510</b>	0.476	0.652	0.324	0.323	0.742	0.214	0.112	0.634	0.741	0.474
d13	<b>2012 Animal Incidence (%)</b>	<b>0.663</b>	0.473	0.198	0.419	0.459	1.133	0.439	0.232	0.754	0.875	0.938
d34	<b>APT during current month</b>	<b>5.29</b>	8.62	3.55	2.65	4.52	8.29	0.90	2.94	8.08	7.32	3.93
d22	<b>APT since start of year</b>	<b>5.29</b>	8.62	3.55	2.65	4.52	8.29	0.90	2.94	8.08	7.32	3.93
d17	<b>Current 12 month moving average APT</b>	<b>4.40</b>	4.00	1.87	3.05	4.96	7.67	1.97	1.82	5.11	5.45	4.97
d42	<b>2016 APT</b>	<b>4.23</b>	3.45	1.63	3.14	4.99	7.28	1.98	1.72	4.62	5.20	5.20
d40	<b>2015 APT</b>	<b>4.06</b>	3.37	2.08	2.80	4.31	4.46	1.88	4.51	5.33	5.06	5.38
d32	<b>2014 APT</b>	<b>3.55</b>	2.39	2.18	3.24	2.78	5.24	1.79	1.58	5.08	4.64	3.65
d18	<b>2013 APT</b>	<b>3.27</b>	3.14	4.53	2.20	2.42	4.90	1.64	0.86	3.87	4.33	3.05
d19	<b>2012 APT</b>	<b>4.21</b>	3.17	1.52	2.90	3.37	7.17	3.37	1.68	4.57	4.92	5.67
d23	<b>No. negative in contacts since start of year</b>	<b>24</b>	2	1	3	0	1	0	0	0	7	10
d46	<b>No. negative in contacts over last 12 months</b>	<b>563</b>	28	12	79	23	105	8	55	16	76	161
d43	<b>No. negative in contacts during 2016</b>	<b>579</b>	37	11	78	24	105	8	57	17	63	179
d41	<b>No. negative in contacts during 2015</b>	<b>755</b>	59	10	23	62	37	45	9	73	95	342
d33	<b>No. negative in contacts during 2014</b>	<b>1060</b>	40	10	100	227	93	29	9	201	35	316
d24	<b>No. negative in contacts during 2013</b>	<b>565</b>	44	74	3	18	83	22	0	49	35	237
d25	<b>No. negative in contacts during 2012</b>	<b>1394</b>	9	0	23	35	79	611	1	133	55	448
d37	<b>Reactor removal time 2016</b>	<b>8.2</b>	11.0	8.9	8.2	8.2	8.2	8.9	8.2	8.9	8.2	8.2
d36	<b>Reactor removal time 2015</b>	<b>8.9</b>	9.6	9.6	8.9	8.9	8.2	8.9	8.2	9.6	9.6	8.2
d45	<b>Reactor removal time 2014</b>	<b>8.9</b>	9.6	8.9	8.9	8.9	8.9	8.9	8.2	10.3	8.9	8.2
d35	<b>Reactor removal time 2013</b>	<b>8.9</b>	9.6	8.9	8.2	9.6	8.9	9.6	8.9	9.6	9.6	8.2
d47	<b>Reactor removal time 2012</b>	<b>11.6</b>	12.3	12.3	9.6	12.3	10.3	10.3	8.9	11.6	11.6	8.9
D44	<b>Reactor removal time 2011</b>	<b>9.6</b>	13.0	8.2	8.9	8.9	10.3	11.6	8.2	11.6	8.9	8.2

### **Tuberculosis: number of reactor herds by month and by DVO in 2017 and unique herd breakdowns during the year**

2017		DVO_CODE										
Year	Month	Armagh	Ballymena	Coleraine	Dungannon	Enniskillen	L'Derry	Mallusk	Newry	Nt'Ards	Omagh	Total
2017	1	30	22	24	32	20	7	9	38	22	29	233
2017	2											0
2017	3											0
2017	4											0
2017	5											0
2017	6											0
2017	7											0
2017	8											0
2017	9											0
2017	10											0
2017	11											0
2017	12											0
Total		30	22	24	32	20	7	9	38	22	29	233

Unique Herd Breakdowns		DVO_CODE									
Year	Armagh	Ballymena	Coleraine	Dungannon	Enniskillen	L'Derry	Mallusk	Newry	Nt'Ards	Omagh	Total Herds
2017	51	28	39	51	29	10	12	63	52	43	378

### **Tuberculosis: number of reactor herds by month and by DVO in 2016 and unique herd breakdowns during the year**

2016		DVO_CODE										
Year	Month	Armagh	Ballymena	Coleraine	Dungannon	Enniskillen	L'Derry	Mallusk	Newry	Nt'Ards	Omagh	Total
2016	1	17	14	26	24	17	3	16	19	15	35	186
2016	2	15	8	16	24	14	1	8	9	11	16	122
2016	3	18	9	25	28	15	1	1	19	16	18	150
2016	4	25	12	29	17	24	2	8	26	10	35	188
2016	5	8	3	14	22	16	2	0	13	12	12	102
2016	6	8	5	14	15	11	2	2	9	17	9	92
2016	7	6	3	9	11	16	1	0	19	16	8	89
2016	8	10	1	14	12	11	0	1	13	19	13	94
2016	9	17	6	14	18	15	1	0	23	15	14	123
2016	10	20	7	19	26	17	3	5	21	20	28	166
2016	11	19	13	16	31	16	8	15	28	25	25	196
2016	12	26	7	27	21	29	6	17	39	30	29	231
Total		189	88	223	249	201	30	73	238	206	242	1739

Unique Herd Breakdowns		DVO_CODE									
Year	Armagh	Ballymena	Coleraine	Dungannon	Enniskillen	L'Derry	Mallusk	Newry	Nt'Ards	Omagh	Total Herds
2016	231	111	319	322	236	49	93	311	249	325	2246

### **Tuberculosis: number of reactor herds by month and by DVO in 2015 and unique herd breakdowns during the year**

2015		DVO_CODE										
Year	Month	Armagh	Ballymena	Coleraine	Dungannon	Enniskillen	L'Derry	Mallusk	Newry	Nt'Ards	Omagh	Total
2015	1	18	17	36	25	19	8	13	21	21	36	214
2015	2	8	15	31	13	19	4	8	22	23	28	171
2015	3	14	6	24	12	18	2	6	24	12	16	134
2015	4	16	9	22	18	26	5	5	23	17	17	158
2015	5	9	3	13	10	20	5	6	16	10	13	105
2015	6	8	2	9	12	15	4	5	7	10	8	80
2015	7	8	2	10	10	12	11	3	25	12	7	100
2015	8	8	7	12	8	10	3	4	26	17	5	100
2015	9	6	4	12	20	12	8	3	13	9	11	98
2015	10	19	6	26	23	17	11	5	29	13	35	184
2015	11	15	7	29	24	22	5	15	20	15	33	185
2015	12	16	10	19	19	10	9	14	19	14	29	159
Total		145	88	243	194	200	75	87	245	173	238	1688

Unique Herd Breakdowns		DVO_CODE									
Year	Armagh	Ballymena	Coleraine	Dungannon	Enniskillen	L'Derry	Mallusk	Newry	Nt'Ards	Omagh	Total Herds
2015	180	106	318	240	243	84	100	309	224	292	2096

A herd is defined as being a TB reactor herd if it had at least one TB reactor animal in that month and no TB reactor animals during the previous 12 months.

A TB unique herd breakdown is defined as a herd which has had at least one TB reactor during the specified calendar year irrespective of any TB reactors during the previous calendar year.

**Tuberculosis: number of reactor animals by month and by DVO 2017**

2017		DVO_CODE										
Year	Month	Armagh	Ballymena	Coleraine	Dungannon	Enniskillen	L'Derry	Mallusk	Newry	Nt'Ards	Omagh	Total
2017	1	265	73	113	145	219	34	23	323	241	135	1571
2017	2											0
2017	3											0
2017	4											0
2017	5											0
2017	6											0
2017	7											0
2017	8											0
2017	9											0
2017	10											0
2017	11											0
2017	12											0
Total		265	73	113	145	219	34	23	323	241	135	1571

**Tuberculosis: number of reactor animals by month and by DVO 2016**

2016		DVO_CODE										
Year	Month	Armagh	Ballymena	Coleraine	Dungannon	Enniskillen	L'Derry	Mallusk	Newry	Nt'Ards	Omagh	Total
2016	1	106	41	171	169	100	27	42	140	175	246	1217
2016	2	65	20	77	156	106	17	50	129	72	166	858
2016	3	73	39	75	107	109	11	14	151	74	148	801
2016	4	94	39	191	130	158	19	50	159	106	272	1218
2016	5	76	11	95	90	180	2	29	66	178	133	860
2016	6	23	15	46	62	90	10	16	61	78	57	458
2016	7	72	21	54	70	134	8	35	145	180	67	786
2016	8	98	10	88	99	143	0	17	128	115	129	827
2016	9	64	21	88	94	89	11	14	143	133	218	875
2016	10	129	24	118	185	234	19	15	217	120	192	1253
2016	11	92	23	160	332	189	17	60	186	213	117	1389
2016	12	102	21	157	108	331	20	61	254	188	140	1382
Total		994	285	1320	1602	1863	161	403	1779	1632	1885	11924

**Tuberculosis: number of reactor animals by month and by DVO 2015**

2015		DVO_CODE										
Year	Month	Armagh	Ballymena	Coleraine	Dungannon	Enniskillen	L'Derry	Mallusk	Newry	Nt'Ards	Omagh	Total
2015	1	85	78	130	98	129	22	33	125	209	245	1154
2015	2	45	80	116	45	87	29	44	198	132	175	951
2015	3	46	19	120	52	64	7	49	108	59	142	666
2015	4	71	28	83	215	126	39	14	223	141	94	1034
2015	5	51	12	46	45	94	42	33	95	84	150	652
2015	6	94	9	30	40	75	22	10	152	59	51	542
2015	7	19	27	75	170	68	78	40	182	115	124	898
2015	8	150	18	86	52	75	10	10	184	219	29	833
2015	9	22	25	112	91	133	66	32	111	117	165	874
2015	10	92	24	132	120	101	54	11	171	144	171	1020
2015	11	110	24	120	137	123	30	66	175	245	215	1245
2015	12	88	24	70	165	124	48	30	240	82	264	1135
Total		873	368	1120	1230	1199	447	372	1964	1606	1825	11004

**A TB reactor animal is defined as an animal where the manual interpretation field for a skin test is positive ('P') with the first test date being taken as the time at which the animal became a reactor.  
Animals with lesions at routine slaughter ('LRS') are not taken into account.**



**Month = January 2017**

Ref.		<b>Total</b>	<b>Armagh</b>	<b>Ballymena</b>	<b>Coleraine</b>	<b>Dungannon</b>	<b>Enniskillen</b>	<b>Mallusk</b>	<b>L'derry</b>	<b>Newry</b>	<b>Nt'ards</b>	<b>Omagh</b>
b16	<b>No. herds with any test completed in month</b>	<b>4091</b>	<b>459</b>	<b>263</b>	<b>455</b>	<b>525</b>	<b>468</b>	<b>336</b>	<b>141</b>	<b>600</b>	<b>335</b>	<b>509</b>
b17	No. herds with any test, from start of year	4091	459	263	455	525	468	336	141	600	335	509
b29	All herds with any test, from start of year	4239	470	275	469	545	484	357	149	611	342	537
b18	No. herds with any test, from start of year (no cattle)	148	11	12	14	20	16	21	8	11	7	28
b19	<b>No. herds with herd test completed in month</b>	<b>3544</b>	<b>382</b>	<b>221</b>	<b>395</b>	<b>427</b>	<b>423</b>	<b>279</b>	<b>127</b>	<b>530</b>	<b>304</b>	<b>456</b>
b20	No. herds with herd test, from start of year	3544	382	221	395	427	423	279	127	530	304	456
b30	All herds with herd test, from start of year	3691	392	233	410	447	438	300	135	541	311	484
b21	No. herds with herd test, from start of year (no cattle)	147	10	12	15	20	15	21	8	11	7	28
b22	No. herds with herd test during last 12 months	23153	2306	1362	2553	2816	3032	1573	878	3714	1921	2998
b31	No. herds with herd test during last 13-24 months	23418	2284	1409	2576	2873	3099	1639	865	3715	1922	3036
b24	No. herds with herd test during 2016	23343	2297	1387	2557	2840	3057	1614	880	3750	1940	3021
b39	No. herds with herd test during 2015	23604	2304	1417	2610	2875	3121	1654	873	3748	1939	3063
b32	No. herds with herd test during 2014	23149	2274	1395	2490	2829	3049	1621	890	3658	1892	3051
b28	No. herds with herd test during 2013	22979	2237	1353	2530	2833	3054	1590	873	3618	1863	3028
b23	No. herds with herd test during 2012	23093	2244	1369	2513	2831	3067	1623	869	3638	1880	3059
b25	<b>No. herds with any risk test completed</b>	<b>1839</b>	<b>238</b>	<b>93</b>	<b>195</b>	<b>248</b>	<b>236</b>	<b>114</b>	<b>56</b>	<b>283</b>	<b>131</b>	<b>245</b>
b26	<b>No. herds with herd risk test completed</b>	<b>1173</b>	<b>135</b>	<b>51</b>	<b>120</b>	<b>137</b>	<b>196</b>	<b>46</b>	<b>27</b>	<b>194</b>	<b>94</b>	<b>173</b>
b27	<b>No. herds with restricted herd test completed</b>	<b>657</b>	<b>73</b>	<b>27</b>	<b>77</b>	<b>95</b>	<b>64</b>	<b>34</b>	<b>22</b>	<b>102</b>	<b>92</b>	<b>71</b>

**Month = January 2017**

Ref	Total	Armagh	Ballymena	Coleraine	Dungannon	Enniskillen	Mallusk	L'derry	Newry	Nt'ards	Omagh	
c1	<b>Total number of tests in current month</b>	<b>4763</b>	<b>569</b>	<b>294</b>	<b>523</b>	<b>623</b>	<b>500</b>	<b>412</b>	<b>173</b>	<b>704</b>	<b>396</b>	<b>569</b>
c2	Total number of tests from start of year	4763	569	294	523	623	500	412	173	704	396	569
c3	No. tests during the same time period in the previous year	5124	500	350	637	652	498	460	196	723	424	684
c4	% change between years	-7.6	12.1	-19.0	-21.8	-4.7	0.4	-11.7	-13.3	-2.7	-7.1	-20.2
c5	No. tests in the previous 12 months	45082	5075	2441	5231	5906	5228	2950	1494	6958	3993	5806
c6	<b>No. animal tests in current month</b>	<b>296786</b>	<b>30741</b>	<b>20571</b>	<b>42626</b>	<b>32068</b>	<b>26431</b>	<b>25530</b>	<b>11550</b>	<b>39980</b>	<b>32905</b>	<b>34384</b>
c7	No. animal tests from start of year	296786	30741	20571	42626	32068	26431	25530	11550	39980	32905	34384
c8	No. animal tests during the same time period in the previous year	326071	30516	25727	48516	35099	23788	33225	12820	41012	35750	39618
c9	% change between years	-9.9	0.7	-25.1	-13.8	-9.5	10.0	-30.1	-11.0	-2.6	-8.6	-15.2
c10	No. animal tests in previous 12 months	2787743	288493	169212	414150	317887	258542	194524	92245	383905	311577	357208
c11	No. cattle herds eligible for TB testing	25916	2575	1544	2829	3125	3332	1846	1005	4141	2137	3382
c12	No. cattle eligible for TB testing	1580195	157314	110759	208695	179041	154514	136570	61465	210857	164290	196690
c13	<b>No. restricted herd tests during month</b>	<b>657</b>	<b>73</b>	<b>27</b>	<b>77</b>	<b>95</b>	<b>64</b>	<b>34</b>	<b>22</b>	<b>102</b>	<b>92</b>	<b>71</b>
c14	No. animals tested	104087	10629	3552	17073	12850	6960	5095	4723	15845	15272	12088
c15	<b>No. herd tests during month</b>	<b>3544</b>	<b>382</b>	<b>221</b>	<b>395</b>	<b>427</b>	<b>423</b>	<b>279</b>	<b>127</b>	<b>530</b>	<b>304</b>	<b>456</b>
c16	No. animals tested	293656	30298	20355	42322	31609	26239	25028	11430	39550	32650	34175
c17	<b>No. individual tests during month</b>	<b>1219</b>	<b>187</b>	<b>73</b>	<b>128</b>	<b>196</b>	<b>77</b>	<b>133</b>	<b>46</b>	<b>174</b>	<b>92</b>	<b>113</b>
c18	No. animals tested	3130	443	216	304	459	192	502	120	430	255	209
c23	<b>No. animals TB tested since start of year</b>	<b>295129</b>	<b>30504</b>	<b>20490</b>	<b>42403</b>	<b>31860</b>	<b>26389</b>	<b>25402</b>	<b>11470</b>	<b>39744</b>	<b>32692</b>	<b>34226</b>
c19	No. animals TB tested in previous 12 months	1704910	185492	118419	232593	207062	170162	146611	67496	242265	183614	218404
c24	No. animals TB tested in previous 13-24 months	1665915	172756	119812	230416	200374	167832	145168	67250	231327	180475	214095
c21	No. animals TB tested in 2016	1709790	184409	120037	232829	209237	170574	148768	67732	243435	184913	219948
c26	No. animals TB tested in 2015	1662355	173129	118652	230608	200883	169615	144926	67583	230622	180647	213478
c25	No. animals TB tested in 2014	1607660	166774	117083	214490	191534	163019	143992	61765	225643	177960	207187
c22	No. animals TB tested in 2013	1620055	172322	114133	214509	197072	166287	140842	62228	224389	180893	210490
c20	No. animals TB tested in 2012	1643626	171497	112484	213785	196069	168531	143005	64217	229674	181839	219225

**Month = January 2017**

Ref		<b>Total</b>	<b>Armagh</b>	<b>Ballymena</b>	<b>Coleraine</b>	<b>Dungannon</b>	<b>Enniskillen</b>	<b>Mallusk</b>	<b>L'derry</b>	<b>Newry</b>	<b>Nt'ards</b>	<b>Omagh</b>
f1	No. of Officially Tuberculosis Free Herds (OTF)	<b>26309</b>	2567	1621	2972	3133	3360	1983	1128	4166	1940	3439
f2	No. of Officially Tuberculosis Suspended Herds (OTS)	<b>1275</b>	173	62	106	156	94	133	38	235	138	140
f3	No. of Officially Tuberculosis Withdrawn Herds (OTW)	<b>1892</b>	231	85	212	243	151	110	48	329	242	241
f4	% herds that are OTF	<b>89.3</b>	86.4	91.7	90.3	88.7	93.2	89.1	92.9	88.1	83.6	90.0
f5	% herds that are OTS	<b>4.3</b>	5.8	3.5	3.2	4.4	2.6	6.0	3.1	5.0	5.9	3.7
f6	% herds that are OTW	<b>6.4</b>	7.8	4.8	6.4	6.9	4.2	4.9	4.0	7.0	10.4	6.3

		<b>Month = September 2016</b>										
		<b>(Data lagged by 4 months)</b>										
Ref		<b>Total</b>	<b>Armagh</b>	<b>Ballymena</b>	<b>Coleraine</b>	<b>Dungannon</b>	<b>Enniskillen</b>	<b>Mallusk</b>	<b>L'derry</b>	<b>Newry</b>	<b>Nt'ards</b>	<b>Omagh</b>
e19	Num. TB culture positive animals that were not TB reactors in last 12 months	688	79	39	103	100	32	35	11	139	95	55
e20	Num. TB culture positive animals that were not TB reactors in last 13-24 months	656	58	41	77	74	29	49	15	113	111	89
e5	Num. TB culture positive animals that were not TB reactors in 2015	676	71	41	95	84	27	38	18	120	112	70
e6	Num. TB culture positive animals that were not TB reactors in 2014	575	68	37	54	66	38	53	12	100	80	67
e2	Num. TB culture positive animals that were not TB reactors in 2013	583	63	33	32	98	28	30	7	131	92	69
e3	Num. TB culture positive animals that were not TB reactors in 2012	600	62	32	48	66	32	31	9	155	91	74
e4	Num. TB culture positive animals that were not TB reactors in 2011	558	69	40	42	47	31	25	5	154	77	68
e21	No. herds with TB culture positive animals that were not TB reactors in last 12 months	455	49	21	61	62	24	31	7	87	67	46
e22	No. herds with TB culture positive animals that were not TB reactors in last 13-24 months	413	41	25	60	49	21	26	12	63	69	47
e11	No. herds with TB culture positive animals that were not TB reactors in 2015	449	50	25	70	55	20	27	12	67	78	45
e12	No. herds with TB culture positive animals that were not TB reactors in 2014	372	47	25	37	48	27	27	10	66	51	34
e8	No. herds with TB culture positive animals that were not TB reactors in 2013	381	50	14	30	46	20	20	5	83	60	53
e9	No. herds with TB culture positive animals that were not TB reactors in 2012	401	46	17	35	48	25	23	9	82	67	49
e10	No. herds with TB culture positive animals that were not TB reactors in 2011	363	48	17	31	32	27	17	3	87	56	45
e23	% of TB animals that were TB culture positive that were not TB reactors in last 12 months	5.7	7.6	11.9	7.9	6.7	2.1	8.6	4.4	7.5	5.7	2.6
e24	% of TB animals that were TB culture positive that were not TB reactors in last 13-24 months	5.8	6.9	9.5	5.5	6.4	2.3	10.9	3.9	5.4	6.9	5.3
e17	% of TB animals that were TB culture positive that were not TB reactors in 2015	5.8	7.5	10.0	7.8	6.4	2.2	9.3	3.9	5.8	6.5	3.7
e18	% of TB animals that were TB culture positive that were not TB reactors in 2014	6.1	10.4	8.3	5.0	8.7	2.9	13.1	8.9	5.2	5.4	5.5
e14	% of TB animals that were TB culture positive that were not TB reactors in 2013	6.6	7.1	4.2	4.4	13.4	2.2	9.0	9.1	8.4	6.4	6.5
e15	% of TB animals that were TB culture positive that were not TB reactors in 2012	5.2	7.1	12.5	5.1	6.8	1.6	4.7	5.7	8.2	5.4	3.5
e16	% of TB animals that were TB culture positive that were not TB reactors in 2011	6.4	7.9	12.2	6.6	7.5	3.3	12.8	4.0	7.2	4.2	6.7

Ref	Month = September 2016 (Data lagged by 4 months)	Total	Armagh	Ballymena	Coleraine	Dungannon	Enniskillen	Mallusk	L'derry	Newry	Nt'ards	Omagh
g31	No. of confirmed TB reactors during last 12 months	4860	424	147	641	674	504	164	155	622	706	823
g32	No. of confirmed TB reactors during last 13-24 months	5406	419	237	804	545	605	199	227	820	743	807
g5	No. of confirmed TB reactors 2015	5304	428	228	658	591	561	194	284	782	718	860
g6	No. of confirmed TB reactors 2014	4346	294	229	591	392	561	156	84	725	722	592
g2	No. of confirmed TB reactors 2013	3765	377	422	373	255	520	116	40	541	636	485
g3	No. of confirmed TB reactors 2012	4836	339	131	416	429	821	241	83	698	730	948
g4	No. of confirmed TB reactors 2011	3867	382	134	294	230	495	72	73	809	818	560
g33	Total animals with confirmed TB during last 12 months	5548	503	186	744	774	536	199	166	761	801	878
g34	Total animals with confirmed TB in last 13-24 months	6062	477	278	881	619	634	248	242	933	854	896
g11	Total animals with confirmed TB in 2015	5980	499	269	753	675	588	232	302	902	830	930
g12	Total animals with confirmed TB in 2014	4921	362	266	645	458	599	209	96	825	802	659
g8	Total animals with confirmed TB in 2013	4348	440	455	405	353	548	146	47	672	728	554
g9	Total animals with confirmed TB in 2012	5436	401	163	464	495	853	272	92	853	821	1022
g10	Total animals with confirmed TB in 2011	4425	451	174	336	277	526	97	78	963	895	628
g35	Confirmed TB animal prevalence in last 12 months (%)	0.327	0.282	0.156	0.318	0.374	0.316	0.138	0.244	0.315	0.440	0.405
g36	Confirmed TB animal prevalence in last 13-24 months (%)	0.371	0.281	0.235	0.393	0.315	0.384	0.172	0.374	0.418	0.477	0.425
g17	Confirmed TB animal prevalence in 2015 (%)	0.360	0.288	0.226	0.326	0.336	0.347	0.160	0.447	0.391	0.459	0.436
g18	Confirmed TB animal prevalence in 2014 (%)	0.306	0.217	0.227	0.301	0.239	0.367	0.145	0.155	0.366	0.451	0.318
g14	Confirmed TB animal prevalence in 2013 (%)	0.268	0.255	0.399	0.189	0.179	0.330	0.104	0.076	0.299	0.402	0.263
g15	Confirmed TB animal prevalence in 2012 (%)	0.331	0.234	0.145	0.217	0.252	0.506	0.190	0.143	0.371	0.452	0.466
g16	Confirmed TB animal prevalence in 2011 (%)	0.275	0.271	0.154	0.155	0.146	0.331	0.069	0.120	0.427	0.502	0.299
g37	No. herds with confirmed TB in last 12 months	1941	194	93	283	286	179	89	47	266	222	282
g38	No. herds with confirmed TB in last 13-24 months	1843	149	99	280	197	214	86	70	267	231	250
g23	No. herds with confirmed TB in 2015	1935	163	103	296	222	201	101	77	271	228	273
g24	No. herds with confirmed TB in 2014	1606	126	123	199	171	181	85	50	253	195	223
g20	No. herds with confirmed TB in 2013	1648	157	120	174	144	210	77	29	293	206	238
g21	No. herds with confirmed TB in 2012	1739	148	69	183	161	223	77	52	292	230	304
g22	No. herds with confirmed TB in 2011	1392	138	63	160	116	177	43	38	277	184	196
g39	Confirmed TB herd prevalence in last 12 months (%)	8.26	8.37	6.61	10.95	9.99	5.84	5.40	5.30	7.09	11.41	9.29
g40	Confirmed TB herd prevalence in last 13-24 months (%)	7.80	6.44	6.95	10.73	6.85	6.86	5.15	7.90	7.20	11.93	8.07

g29	Confirmed TB herd prevalence in 2015 (%)	8.20	7.07	7.27	11.34	7.72	6.44	6.11	8.82	7.23	11.76	8.91
g30	Confirmed TB herd prevalence in 2014 (%)	6.94	5.54	8.82	7.99	6.04	5.94	5.24	5.62	6.92	10.31	7.31
g26	Confirmed TB herd prevalence in 2013 (%)	7.17	7.02	8.87	6.88	5.08	6.88	4.84	3.32	8.10	11.06	7.86
g27	Confirmed TB herd prevalence in 2012 (%)	7.53	6.60	5.04	7.28	5.69	7.27	4.74	5.98	8.03	12.23	9.94
g28	Confirmed TB herd prevalence in 2011 (%)	6.03	6.28	4.54	6.23	4.13	5.77	2.62	4.31	7.55	10.18	6.41



### Explanatory Comments for Tuberculosis Statistics - B. Testing Herds

Ref	Data Title	Explanation
B16	No. herds with any test completed in month	Test of any disease status and size (herd or animal-level). Tests with no animals are excluded.
B17	No. herds with any test, from start of year	<b>Test of any disease status and size (herd or animal-level) carried out on a herd since 1st January. Tests with no animals are excluded.</b>
B29	All herds with any test, from start of year	Skin test of any disease status and size (herd or animal-level) carried out on a herd since 1st January. Tests with no animals are included.
B18	No. herds with any test, from start of year (no cattle)	Herd or individual test of any disease status (routine, risk or restricted) where no cattle were recorded at all such tests since 1st January.
B19	No. herds with herd test completed in month	Herd level test of any disease status (routine, risk or restricted) completed during the above month. Tests with no animals are excluded.
B20	No. herds with herd test, from start of year	<b>Herd level test of any disease status (routine, risk or restricted) completed since 1st January. Tests with no animals are excluded.</b>
B30	All herds with herd test, from start of year	Herd level test of any disease status (routine, risk or restricted) completed since 1st January. Tests with no animals are included.
B21	No. herds with herd test, from start of year (no cattle)	Herd level test of any disease status (routine, risk or restricted) where no cattle were recorded at all such herd tests since 1st January.
B22	No. herds with herd test during last 12 months	Herd level test of any disease status (routine, risk or restricted) completed in the 12 month period from the above month. Tests with no animals are excluded.
B31	No. herds with herd test during last 13-24 months	Herd level test of any disease status (routine, risk or restricted) completed in the 13-24 months from the above month. Tests with no animals are excluded.
B39	No. herds with herd test during the year	Herd level test of any disease status (routine, risk or restricted) completed in the calendar year. Tests with no animals are excluded.
B32	No. herds with herd test during the year	Herd level test of any disease status (routine, risk or restricted) completed in the calendar year. Tests with no animals are excluded.
B28	No. herds with herd test during the year	Herd level test of any disease status (routine, risk or restricted) completed in the calendar year. Tests with no animals are excluded.
B23	No. herds with herd test during the year	Herd level test of any disease status (routine, risk or restricted) completed in the calendar year. Tests with no animals are excluded.
B24	No. herds with herd test during the year	Herd level test of any disease status (routine, risk or restricted) completed in the calendar year. Tests with no animals are excluded.
B25	No. herds with any risk test completed	Herd has had a herd or individual level risk test since start of calendar year and number tested > 0.
B26	No. herds with herd risk test completed	Herd has had a herd level risk test since start of calendar year and number tested > 0.
B27	No. herds with restricted herd test completed	Herd has had a restricted herd test (RHT, RH1, RH2) since start of calendar year and number tested > 0.

### Explanatory Comments for Tuberculosis Statistics - C. Testing Animals

Ref	Data Title	Explanation
C1	Total number of tests in current month	Number of herds and individual tests performed in the month stated above. Tests with no animals are excluded.
C2	Total number of tests from start of year	<b>From 1st January. Tests with no animals are excluded.</b>
C3	No. tests during the same time period in the previous year	From 1st January of previous year. Tests with no animals are excluded.
C4	% change between years	<b>Difference between the number of tests carried out during the current year and the number carried out in the previous expressed as a percentage.</b>
C5	No. tests in the previous 12 months	Last 12 month period from the above month. Tests with no animals are excluded.
C6	No. animal tests in current month	Animal test = a count of the number of animals tested within each herd or individual test. Some animals may have been tested multiple times during the year.
C7	No. animal tests from start of year	Number of animal tests carried out since 1st January.
C8	No. animal tests during the same time period in the previous year	Number of animal tests carried out from 1st January in the previous year over the same time interval as recorded for the current year.
C9	% change between years	Difference between the number of animal tests during the current year and the number carried out in the previous expressed as a percentage.
C10	No. animal tests in previous 12 months	Last 12 month period from the above month.
C11	No. cattle eligible for TB testing	Based on the average number of animals presented at TB herd tests over last 4 years.
C12	No. cattle herds eligible for TB testing	Based on cattle being presented for a TB herd tests over last 4 years. Herds with '0' cattle are excluded.

<b>C13</b>	<b>No. restricted herd tests during month</b>	All restricted herd tests (RHT, RH1 and RH2) carried out during the above month.
<b>C14</b>	<b>No. animals tested</b>	Total of the animals reported as being tested within restricted herd tests (RHT, RH1, RH2) during the above month.
<b>C15</b>	<b>No. herd tests during month</b>	Total of the animals reported as being tested within all herd tests during the above month.
<b>C16</b>	<b>No. animals tested</b>	Total of the animals reported as being tested within all herd tests during the above month.
<b>C17</b>	<b>No. individual tests during month</b>	Total of the animals reported as being tested within all individual tests during the above month.
<b>C18</b>	<b>No. animals tested</b>	Total of the animals reported as being tested within all individual tests during the above month.
<b>C23</b>	<b>No. animals TB tested since start of year</b>	Animals identified as having had at least one TB skin test since the start of the calendar year. Due to the same animals being sampled in different DVO areas, the 'Total' is not the sum of the DVO figures.
<b>C19</b>	<b>No. animals TB tested in previous 12 months</b>	Animals identified as having had at least one TB skin test during the last 12 month period from the above month. Due to the same animals being sampled in different DVO areas, the 'Total' is not the sum of the DVO figures.
<b>C24</b>	<b>No. animals TB tested in previous 13-24 months</b>	Animals identified as having had at least one TB skin test during the last 13-24 months from the above month. Due to the same animals being sampled in different DVO areas, the 'Total' is not the sum of the DVO figures.
<b>C26</b>	<b>No. animals TB tested in the year</b>	Animals identified as having had at least one TB skin test during the calendar year. Due to the same animals being sampled in different DVO areas, the 'Total' is not the sum of the DVO figures.
<b>C25</b>	<b>No. animals TB tested in the year</b>	Animals identified as having had at least one TB skin test during the calendar year. Due to the same animals being sampled in different DVO areas, the 'Total' is not the sum of the DVO figures.
<b>C22</b>	<b>No. animals TB tested in the year</b>	Animals identified as having had at least one TB skin test during the calendar year. Due to the same animals being sampled in different DVO areas, the 'Total' is not the sum of the DVO figures.
<b>C20</b>	<b>No. animals TB tested in the year</b>	Animals identified as having had at least one TB skin test during the calendar year. Due to the same animals being sampled in different DVO areas, the 'Total' is not the sum of the DVO figures.
<b>C21</b>	<b>No. animals TB tested in the year</b>	Animals identified as having had at least one TB skin test during the calendar year. Due to the same animals being sampled in different DVO areas, the 'Total' is not the sum of the DVO figures.
<b>Explanatory Comments for Tuberculosis Statistics - D. Results</b>		
<b>Ref</b>	<b>Data Title</b>	<b>Explanation</b>
<b>D1</b>	<b>No. of herds with TB reactors during month</b>	A herd is included in this figure if the herd number had a TB skin test reactor during the above month.
<b>D2</b>	<b>No. of new reactor herds during month</b>	A herd is defined as being a TB reactor herd if it had at least one TB reactor animal in that month and no TB reactor animals during the previous 12 months.
<b>D3</b>	<b>No. of new reactor herds since start of year</b>	= Since 1st January
<b>D4</b>	<b>No. of new reactor herds in the previous 12 months</b>	Last 12 month period from the above month.
<b>D26</b>	<b>No. of new reactor herds in previous 13-24 months</b>	Last 13-24 month period from the above month.
<b>D5</b>	<b>No. of TB reactor animals during month</b>	A TB reactor animal is defined as an animal where the manual interpretation field for a skin test is positive ('P') with the first test date being taken as the time at which the animal became a reactor. Currently animals with lesions at routine slaughter (*LRS*) are not taken into account.
<b>D6</b>	<b>No. of TB reactor animals since start of year</b>	= Since 1st January
<b>D7</b>	<b>No. of reactor animals in the previous 12 months</b>	Last 12 month period from the above month.
<b>D27</b>	<b>No. of reactor animals in previous 13-24 months</b>	Last 13-24 month period from the above month.
<b>D20</b>	<b>Cumulative herd incidence in year (%)</b>	Number of NEW reactor herds since the start of the calendar year as a proportion of cattle herds which have presented cattle for a TB herd test during the same time period.
<b>D9</b>	<b>Annual herd incidence over the last 12 months (%)</b>	Number of NEW reactor herds during the last 12 months as a proportion of cattle herds which have presented cattle for a TB herd test during the same time period.
<b>D28</b>	<b>Annual herd incidence over the last 13-24 months (%)</b>	Number of NEW reactor herds during the last 13-24 months as a proportion of cattle herds which have presented cattle for a TB herd test during the same time period.
<b>D38</b>	<b>In-year Herd Incidence (%)</b>	Number of NEW reactor herds during the year as a proportion of cattle herds which have presented cattle for a TB herd test during the same time period.
<b>D30</b>	<b>In-year Herd Incidence (%)</b>	Number of NEW reactor herds during the year as a proportion of cattle herds which have presented cattle for a TB herd test during the same time period.
<b>D16</b>	<b>In-year Herd Incidence (%)</b>	Number of NEW reactor herds during the year as a proportion of cattle herds which have presented cattle for a TB herd test during the same time period.
<b>D10</b>	<b>In-year Herd Incidence (%)</b>	Number of NEW reactor herds during the year as a proportion of cattle herds which have presented cattle for a TB herd test during the same time period.
<b>D11</b>	<b>In-year Herd Incidence (%)</b>	Number of NEW reactor herds during the year as a proportion of cattle herds which have presented cattle for a TB herd test during the same time period.
<b>D21</b>	<b>Cumulative animal incidence in year (%)</b>	Number of reactor animals during the above month as a proportion of cattle which have been presented for a TB test during the same time period.
<b>D12</b>	<b>Annual animal incidence over the last 12 months (%)</b>	Number of reactor animals during the last 12 months as a proportion of cattle which have been presented for a TB test during the same time period.
<b>D29</b>	<b>Annual animal incidence over the last 13-24 months (%)</b>	Number of reactor animals during the last 13-24 months as a proportion of cattle which have been presented for a TB test during the same time period.



<b>D39</b>	<b>In year Animal Incidence (%)</b>	Number of reactor animals during the year as a proportion of cattle which have been presented for a TB herd test during the same time period.
<b>D31</b>	<b>In year Animal Incidence (%)</b>	Number of reactor animals during the year as a proportion of cattle which have been presented for a TB herd test during the same time period.
<b>D15</b>	<b>In year Animal Incidence (%)</b>	Number of reactor animals during the year as a proportion of cattle which have been presented for a TB herd test during the same time period.
<b>D13</b>	<b>In year Animal Incidence (%)</b>	Number of reactor animals during the year as a proportion of cattle which have been presented for a TB herd test during the same time period.
<b>D14</b>	<b>In year Animal Incidence (%)</b>	Number of reactor animals during the year as a proportion of cattle which have been presented for a TB herd test during the same time period.
<b>D34</b>	<b>APT during current month</b>	= The reactor disclosure rate per 1,000 animal tests current calendar month.
<b>D22</b>	<b>APT since start of year</b>	The reactor disclosure rate per 1,000 animal tests since the start of the calendar year.
<b>D17</b>	<b>Current 12 month moving average APT</b>	The reactor disclosure rate per 1,000 animal tests. Current refers to the rate over the last 12 months.
<b>D42</b>	<b>In year APT</b>	The reactor disclosure rate per 1,000 animal tests during the calendar year.
<b>D40</b>	<b>In year APT</b>	The reactor disclosure rate per 1,000 animal tests during the calendar year.
<b>D32</b>	<b>In year APT</b>	The reactor disclosure rate per 1,000 animal tests during the calendar year.
<b>D18</b>	<b>In year APT</b>	The reactor disclosure rate per 1,000 animal tests during the calendar year.
<b>D19</b>	<b>In year APT</b>	The reactor disclosure rate per 1,000 animal tests during the calendar year.
<b>D23</b>	<b>No. negative in contacts since start of year</b>	Number of animals taken as negative in contacts since the start of the year.
<b>d46</b>	<b>No. Negative in contacts over last 12 months (%)</b>	= Number of negative in contacts during the last 12 months
<b>D43</b>	<b>No. negative in contacts during the year</b>	Number of animals taken as negative in contacts during the year.
<b>D41</b>	<b>No. negative in contacts during the year</b>	Number of animals taken as negative in contacts during the year.
<b>D33</b>	<b>No. negative in contacts during the year</b>	Number of animals taken as negative in contacts during the year.
<b>D24</b>	<b>No. negative in contacts during the year</b>	Number of animals taken as negative in contacts during the year.
<b>D25</b>	<b>No. negative in contacts during the year</b>	Number of animals taken as negative in contacts during the year.
<b>D37</b>	<b>Reactor removal time during the year</b>	Figures given are median values for working days estimated from calendar days (calendar days multiplied by 0.685). Reactors which are not yet slaughtered or where they they were first declared as reactors at slaughter are excluded.
<b>D45</b>	<b>Reactor removal time during the year</b>	Figures given are median values for working days estimated from calendar days (calendar days multiplied by 0.685). Reactors which are not yet slaughtered or where they they were first declared as reactors at slaughter are excluded.
<b>D35</b>	<b>Reactor removal time during the year</b>	Figures given are median values for working days estimated from calendar days (calendar days multiplied by 0.685). Reactors which are not yet slaughtered or where they they were first declared as reactors at slaughter are excluded.
<b>D44</b>	<b>Reactor removal time during the year</b>	Figures given are median values for working days estimated from calendar days (calendar days multiplied by 0.685). Reactors which are not yet slaughtered or where they they were first declared as reactors at slaughter are excluded.
<b>D36</b>	<b>Reactor removal time during the year</b>	Figures given are median values for working days estimated from calendar days (calendar days multiplied by 0.685). Reactors which are not yet slaughtered or where they they were first declared as reactors at slaughter are excluded.



<a href="#">g35</a>	Confirmed TB animal prevalence in last 12 months (%)	Number of TB reactors that were confirmed during the last 12 months by the presence of visible lesions at slaughter and/or by laboratory confirmation (histopathology and/or culture) plus the number of other animals where M. bovis was cultured from TB-like lesions found at slaughter during the last 12 months that were not identified as TB reactor animals divided by the number of animals tuberculin tested during the last 12 months expressed as a %
<a href="#">g36</a>	Confirmed TB animal prevalence in last 13-24 months (%)	Number of TB reactors that were confirmed during the last 13-24 months by the presence of visible lesions at slaughter and/or by laboratory confirmation (histopathology and/or culture) plus the number of other animals where M. bovis was cultured from TB-like lesions found at slaughter during the last 13-24 months that were not identified as TB reactor animals divided by the number of animals tuberculin tested during the last 13-24 months expressed as a %
<a href="#">g18</a>	Confirmed TB animal prevalence in year (%)	Number of TB reactors that were confirmed during the year by the presence of visible lesions at slaughter and/or by laboratory confirmation (histopathology and/or culture) plus the number of other animals where M. bovis was cultured from TB-like lesions found at slaughter during the year that were not identified as TB reactor animals divided by the number of animals tuberculin tested during the year expressed as a %
<a href="#">g14</a>	Confirmed TB animal prevalence in year (%)	Number of TB reactors that were confirmed during the year by the presence of visible lesions at slaughter and/or by laboratory confirmation (histopathology and/or culture) plus the number of other animals where M. bovis was cultured from TB-like lesions found at slaughter during the year that were not identified as TB reactor animals divided by the number of animals tuberculin tested during the year expressed as a %
<a href="#">g15</a>	Confirmed TB animal prevalence in year (%)	Number of TB reactors that were confirmed during the year by the presence of visible lesions at slaughter and/or by laboratory confirmation (histopathology and/or culture) plus the number of other animals where M. bovis was cultured from TB-like lesions found at slaughter during the year that were not identified as TB reactor animals divided by the number of animals tuberculin tested during the year expressed as a %
<a href="#">g16</a>	Confirmed TB animal prevalence in year (%)	Number of TB reactors that were confirmed during the year by the presence of visible lesions at slaughter and/or by laboratory confirmation (histopathology and/or culture) plus the number of other animals where M. bovis was cultured from TB-like lesions found at slaughter during the year that were not identified as TB reactor animals divided by the number of animals tuberculin tested during the year expressed as a %
<a href="#">g17</a>	Confirmed TB animal prevalence in year (%)	Number of TB reactors that were confirmed during the year by the presence of visible lesions at slaughter and/or by laboratory confirmation (histopathology and/or culture) plus the number of other animals where M. bovis was cultured from TB-like lesions found at slaughter during the year that were not identified as TB reactor animals divided by the number of animals tuberculin tested during the year expressed as a %
<a href="#">g37</a>	No. herds with confirmed TB in last 12 months	Herds that had at least one confirmed TB animal during the last 12 months.
<a href="#">g38</a>	No. herds with confirmed TB in last 13-24 months	Herds that had at least one confirmed TB animal during the last 13-24 months.
<a href="#">g24</a>	No. herds with confirmed TB in year	Herds that had at least one confirmed TB animal during the year.
<a href="#">g20</a>	No. herds with confirmed TB in year	Herds that had at least one confirmed TB animal during the year.
<a href="#">g21</a>	No. herds with confirmed TB in year	Herds that had at least one confirmed TB animal during the year.
<a href="#">g22</a>	No. herds with confirmed TB in year	Herds that had at least one confirmed TB animal during the year.
<a href="#">g23</a>	No. herds with confirmed TB in year	Herds that had at least one confirmed TB animal during the year.
<a href="#">g39</a>	Confirmed TB herd prevalence in last 12 months (%)	Number of herds that had at least one confirmed TB animal during the last 12 months divided the number of herds that presented cattle at a TB herd test expressed as a %.
<a href="#">g40</a>	Confirmed TB herd prevalence in last 13-24 months (%)	Number of herds that had at least one confirmed TB animal during the last 13-24 months divided the number of herds that presented cattle at a TB herd test expressed as a %.
<a href="#">g30</a>	Confirmed TB herd prevalence in year (%)	Number of herds that had at least one confirmed TB animal during the year divided the number of herds that presented cattle at a TB herd test expressed as a %.
<a href="#">g26</a>	Confirmed TB herd prevalence in year (%)	Number of herds that had at least one confirmed TB animal during the year divided the number of herds that presented cattle at a TB herd test expressed as a %.
<a href="#">g27</a>	Confirmed TB herd prevalence in year (%)	Number of herds that had at least one confirmed TB animal during the year divided the number of herds that presented cattle at a TB herd test expressed as a %.
<a href="#">g28</a>	Confirmed TB herd prevalence in year (%)	Number of herds that had at least one confirmed TB animal during the year divided the number of herds that presented cattle at a TB herd test expressed as a %.
<a href="#">g29</a>	Confirmed TB herd prevalence in year (%)	Number of herds that had at least one confirmed TB animal during the year divided the number of herds that presented cattle at a TB herd test expressed as a %.