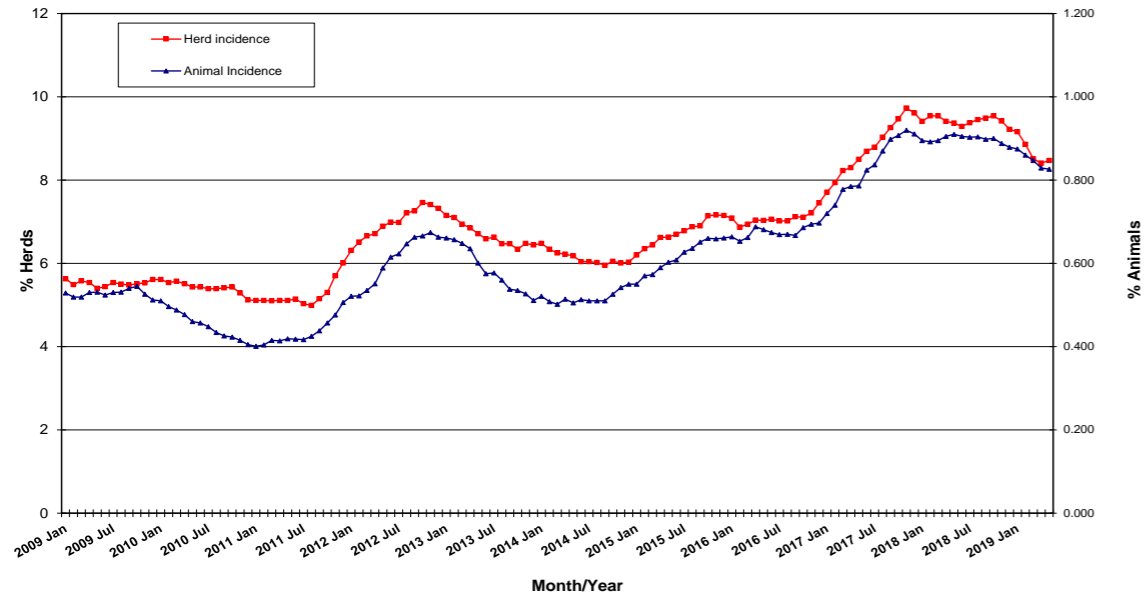


Tuberculosis: Statistics for May 2019

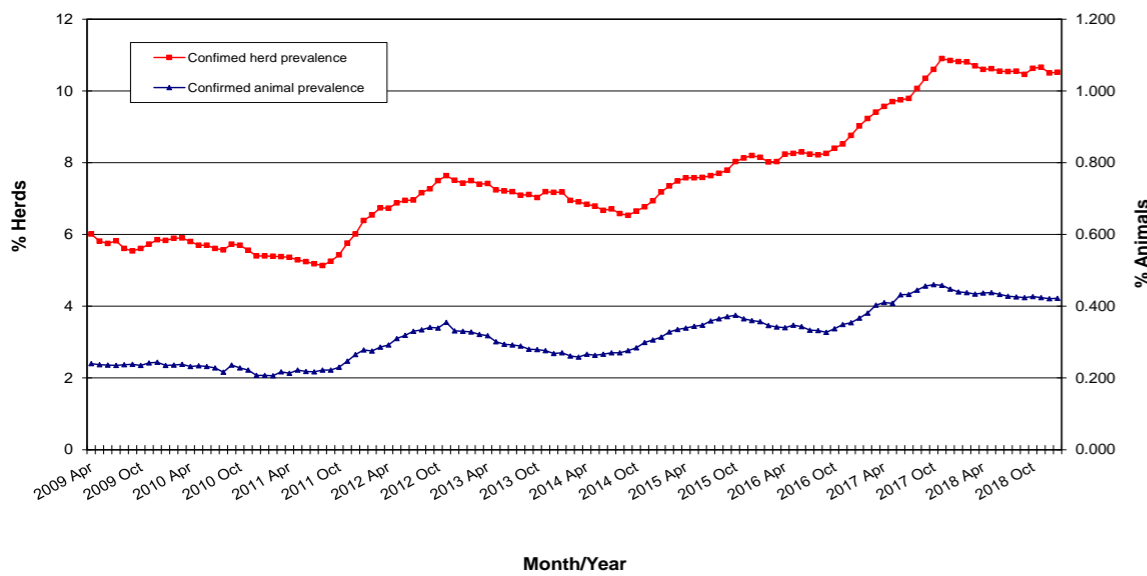
TB Herd and Animal Incidence:
(12 month moving average: January 2009 to May 2019)



Disease statistics

Annual herd incidence over the last 12 months (%)	8.47	
Annual herd incidence over the last 13-24 months (%)	9.37	
2018 Herd Incidence (%)	9.22	
Annual animal incidence over the last 12 months (%)	0.826	
Annual animal incidence over the last 13-24 months (%)	0.910	
2018 Animal Incidence (%)	0.879	
Confirmed TB herd prevalence in last 12 months (%)	10.52	for Month = January 2019
Confirmed TB herd prevalence in last 13-24 months (%)	10.82	for Month = January 2019
Confirmed TB herd prevalence in 2017 (%)	10.85	for Month = January 2019
Confirmed TB animal prevalence in last 12 months (%)	0.422	for Month = January 2019
Confirmed TB animal prevalence in last 13-24 months (%)	0.440	for Month = January 2019
Confirmed TB animal prevalence in 2017 (%)	0.449	for Month = January 2019

TB Confirmed Herd[^] and Animal Prevalence:
(12 month moving average: April 2009 to January 2019)



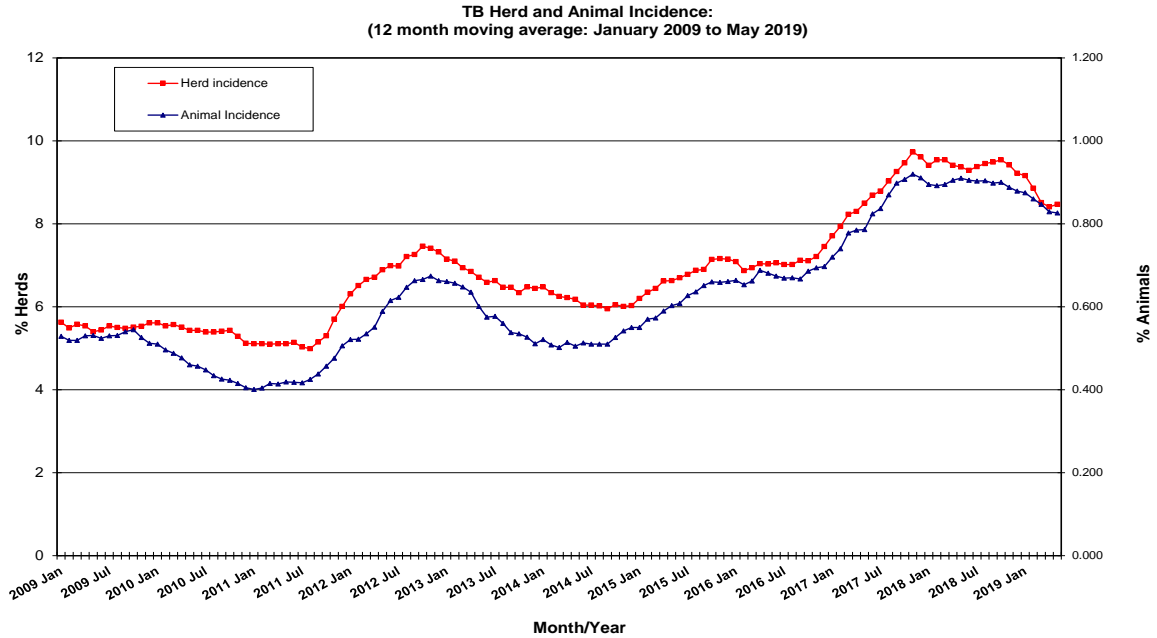
TB skin test reactors

No. of TB reactor animals during month	1,122
No. of TB reactor animals since start of year	5,493
No. of reactor animals in the previous 12 months	14,246
No. of reactor animals in the previous 13-24 months	15,963

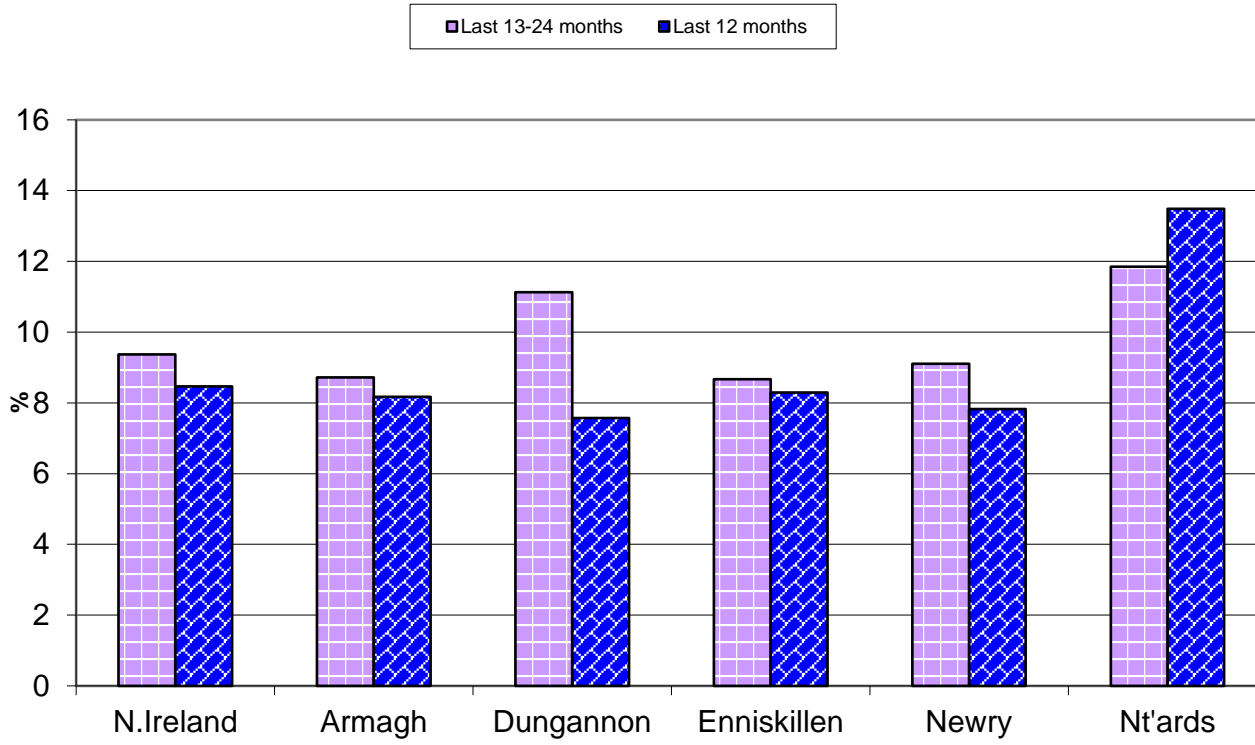
Herds & animals tested

No. herds with herd test during last 12 months	22,575
No. herds with herd test during last 13-24 months	22,901
No. herds with herd test during 2018	22,656
No. animals TB tested since start of year	1,221,007
No. animals TB tested in previous 12 months	1,724,956
No. animals TB tested in previous 13-24 months	1,753,774
No. animals TB tested in 2018	1,744,432

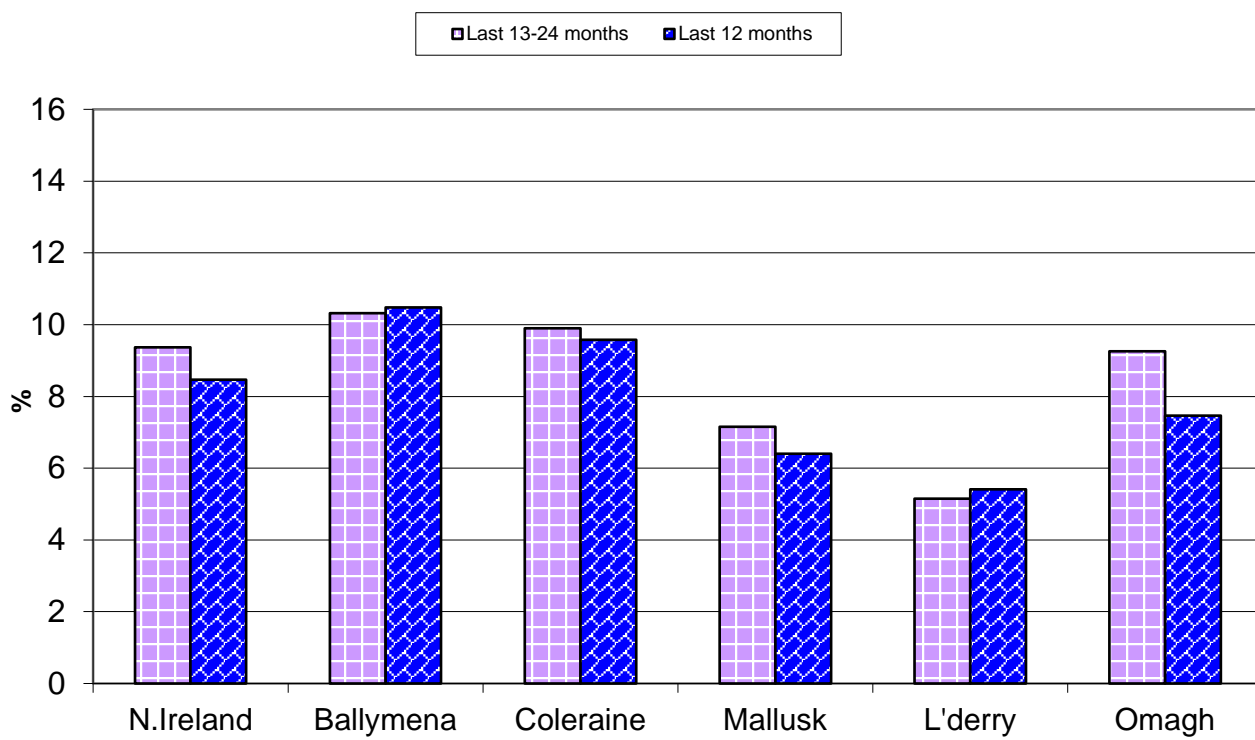
For definitions of these parameters, refer to the 'Explanatory Comments' worksheet: [Click here](#)

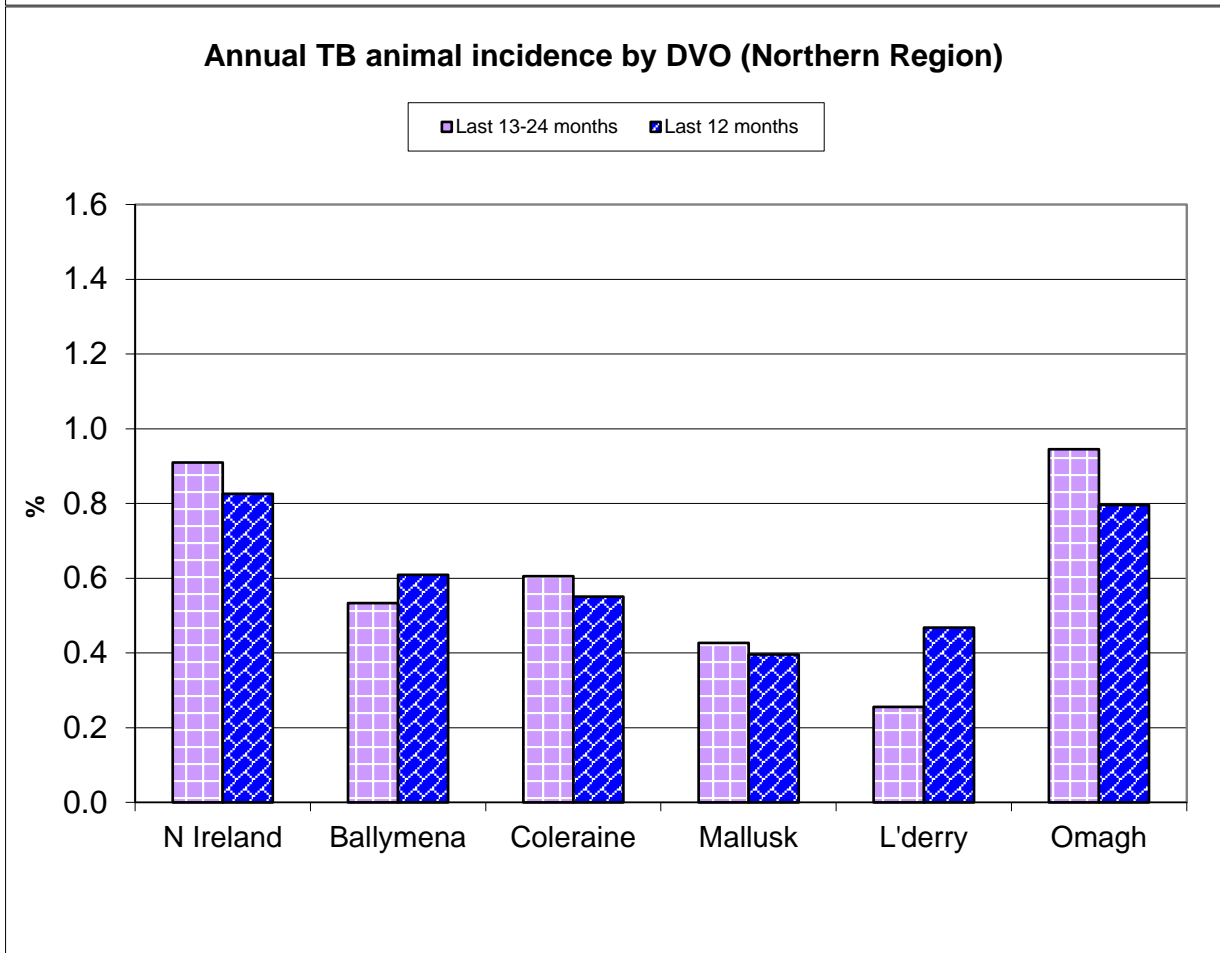
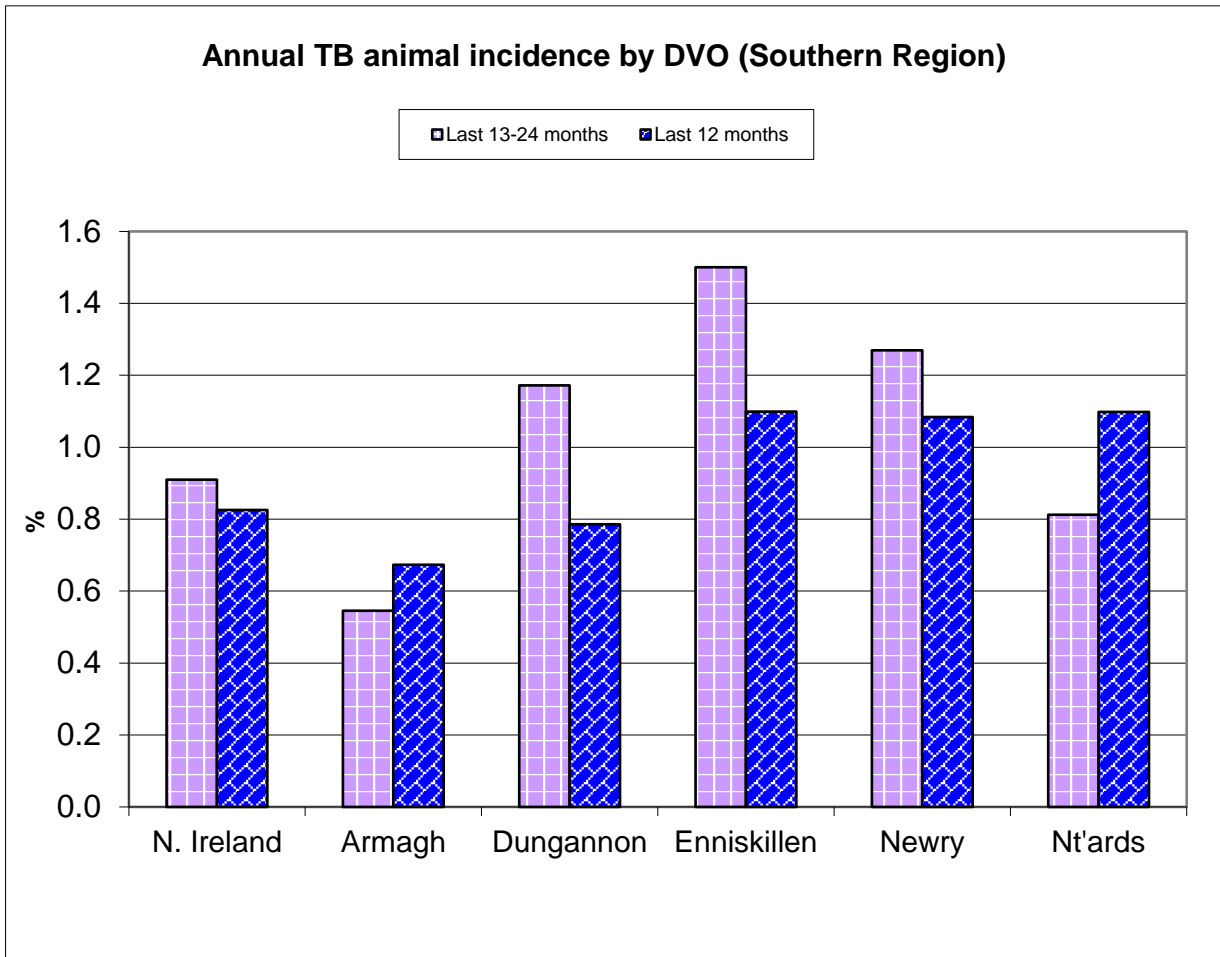


Annual TB herd incidence by DVO (Southern Region)

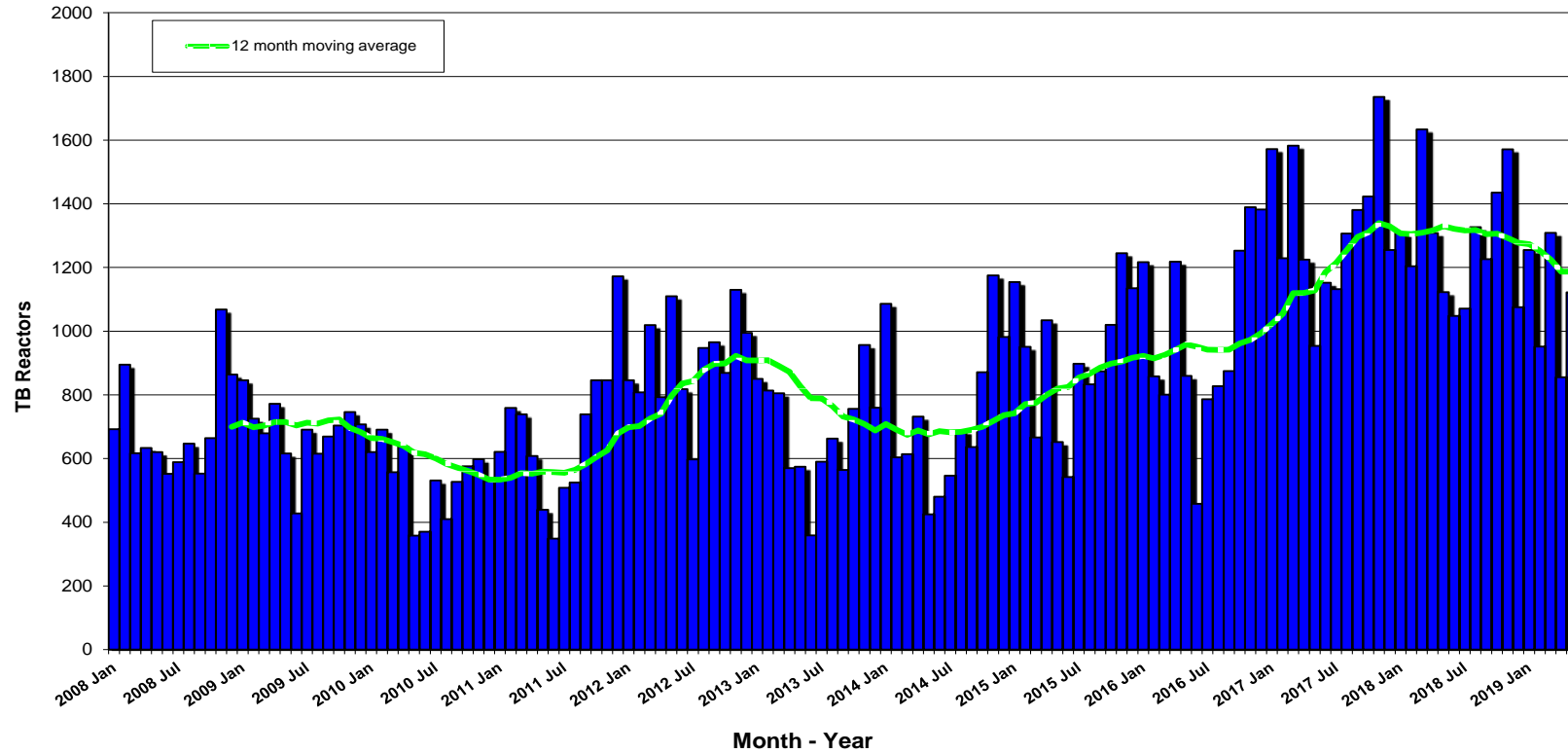


Annual TB herd incidence by DVO (Northern Region)

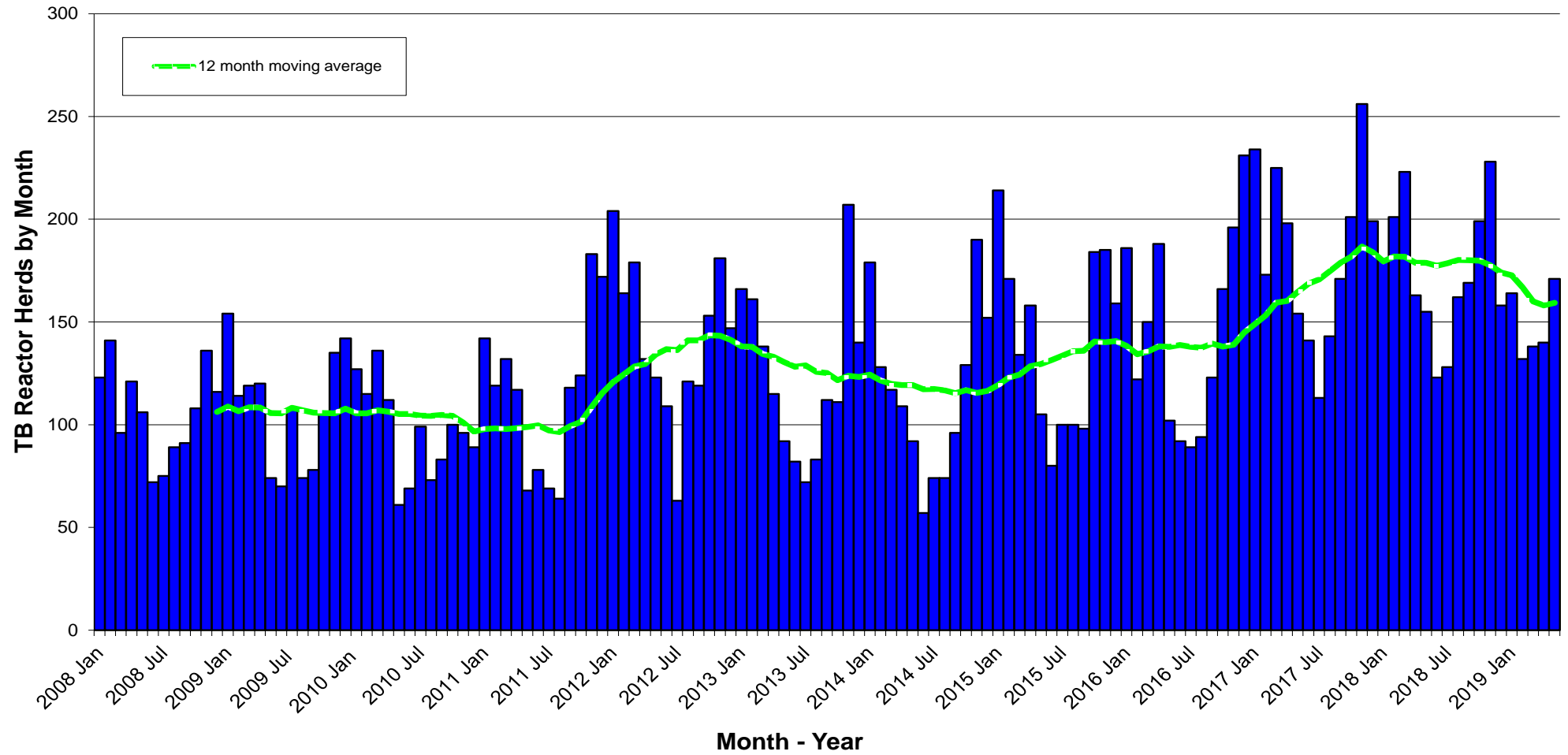


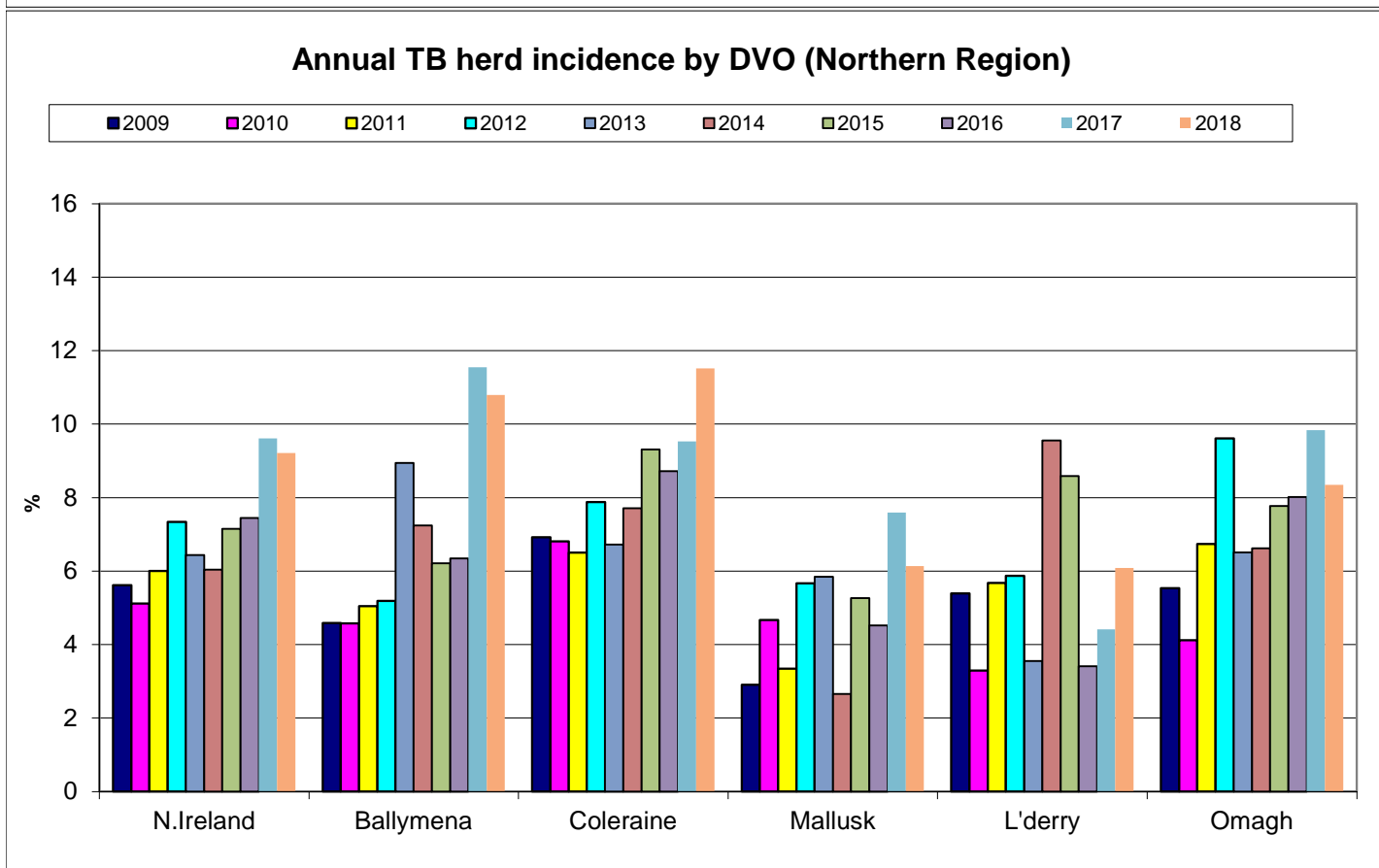
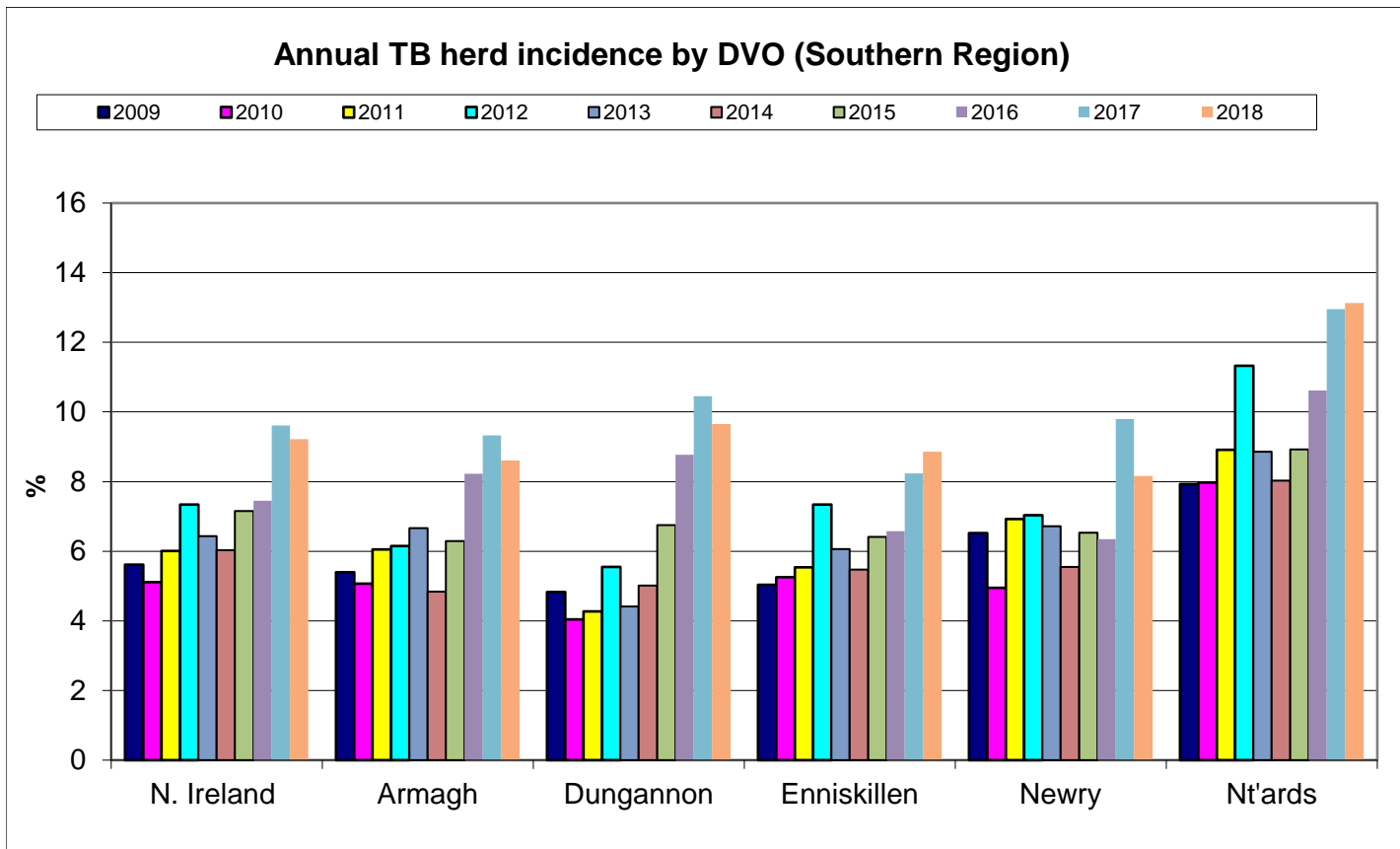


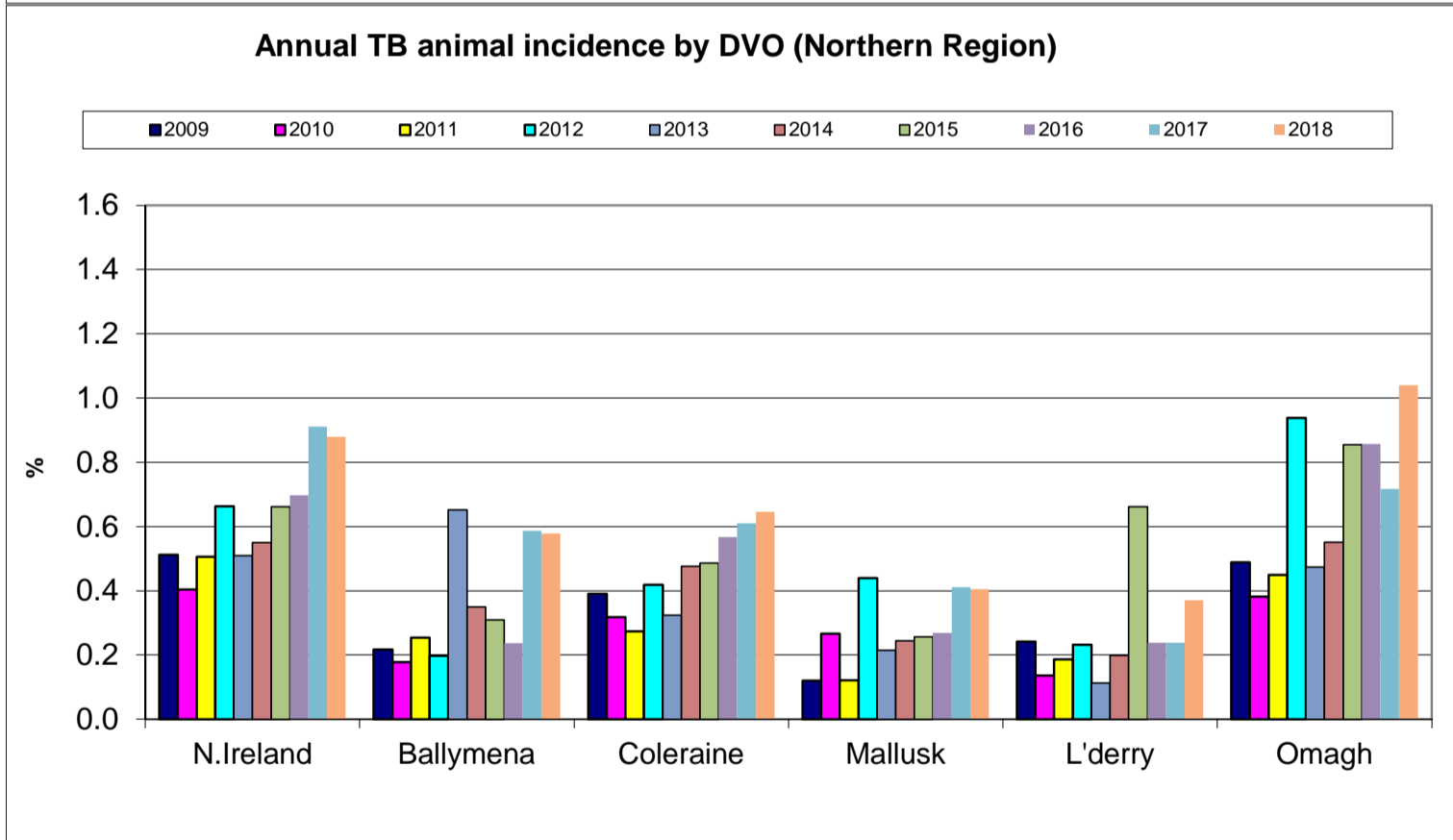
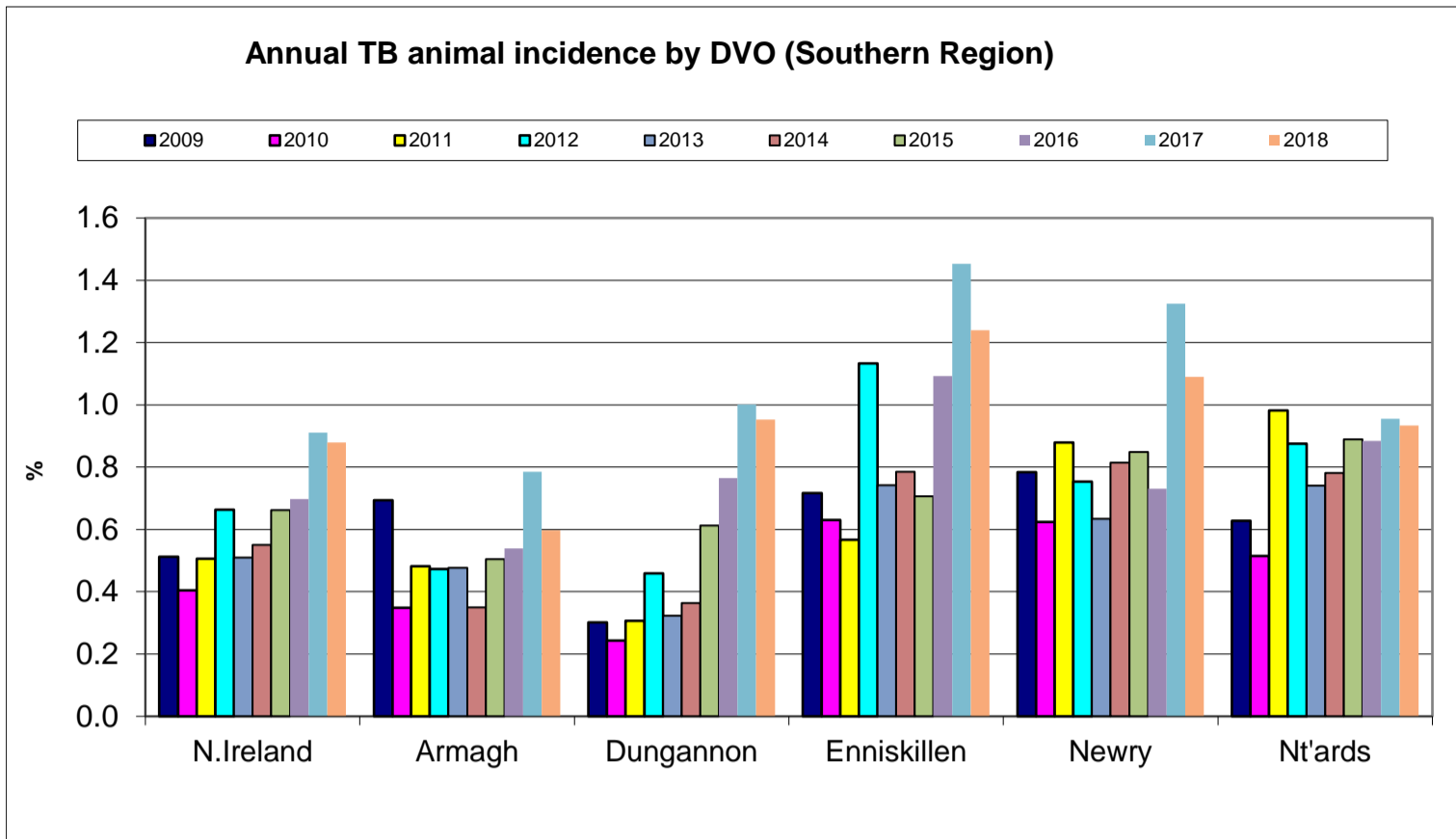
TB Reactors: January 2008 to May 2019



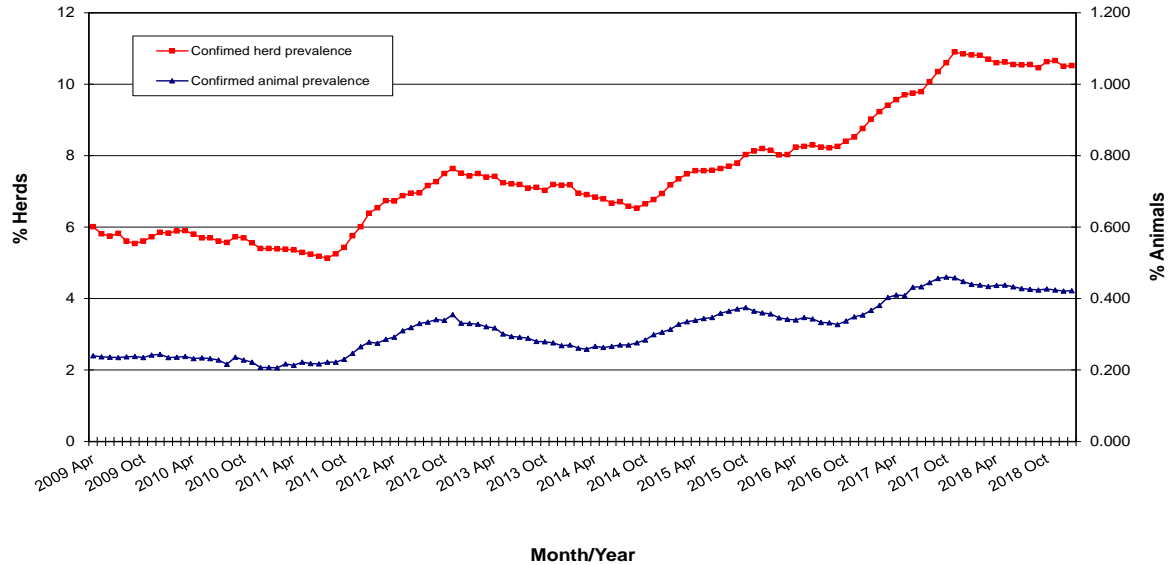
New TB Reactor Herds: January 2008 to May 2019



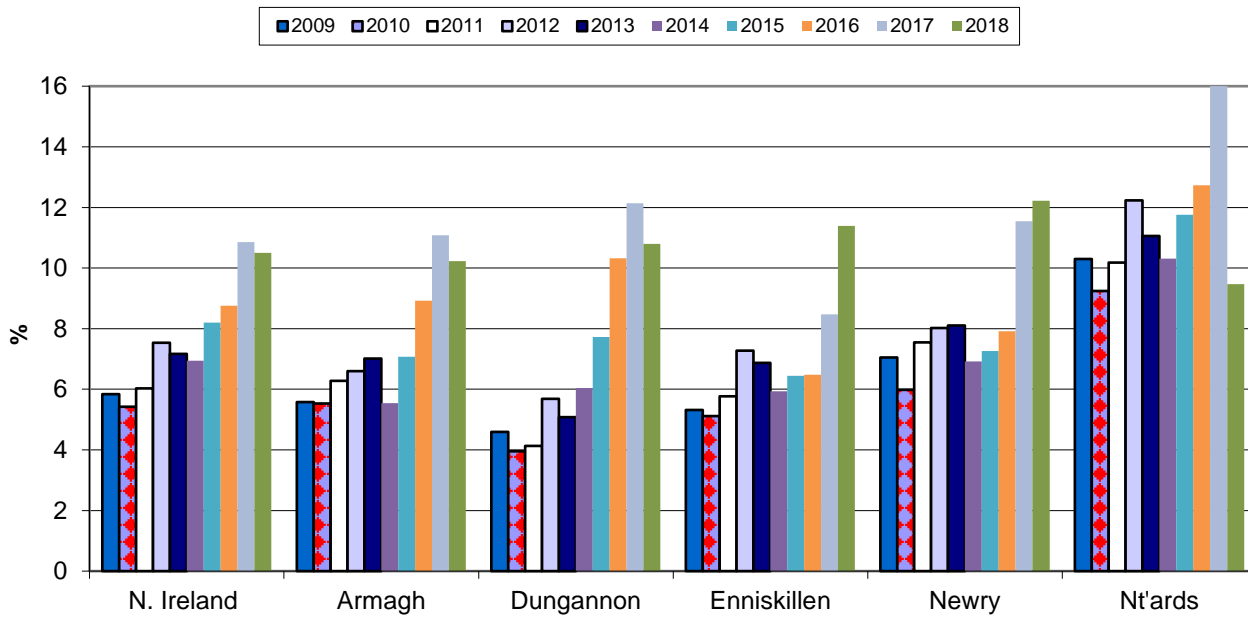




**TB Confirmed Herd[^] and Animal Prevalence:
(12 month moving average: April 2009 to January 2019)**

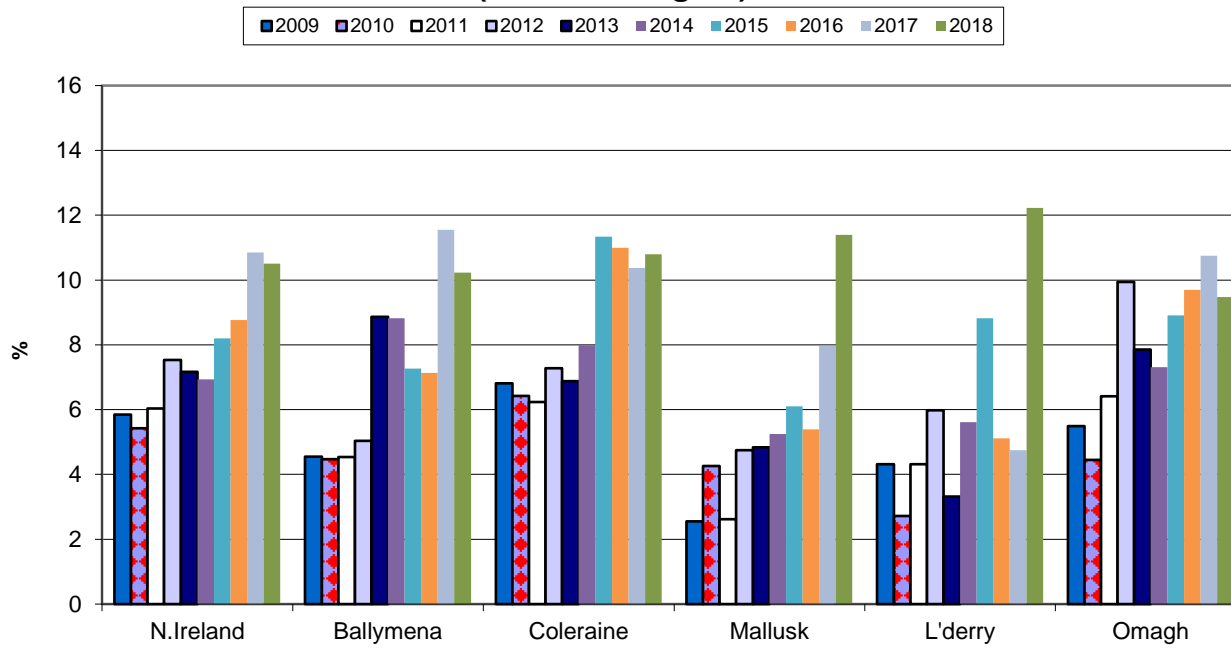


Annual confirmed TB herd prevalence by DVO (Southern Region)



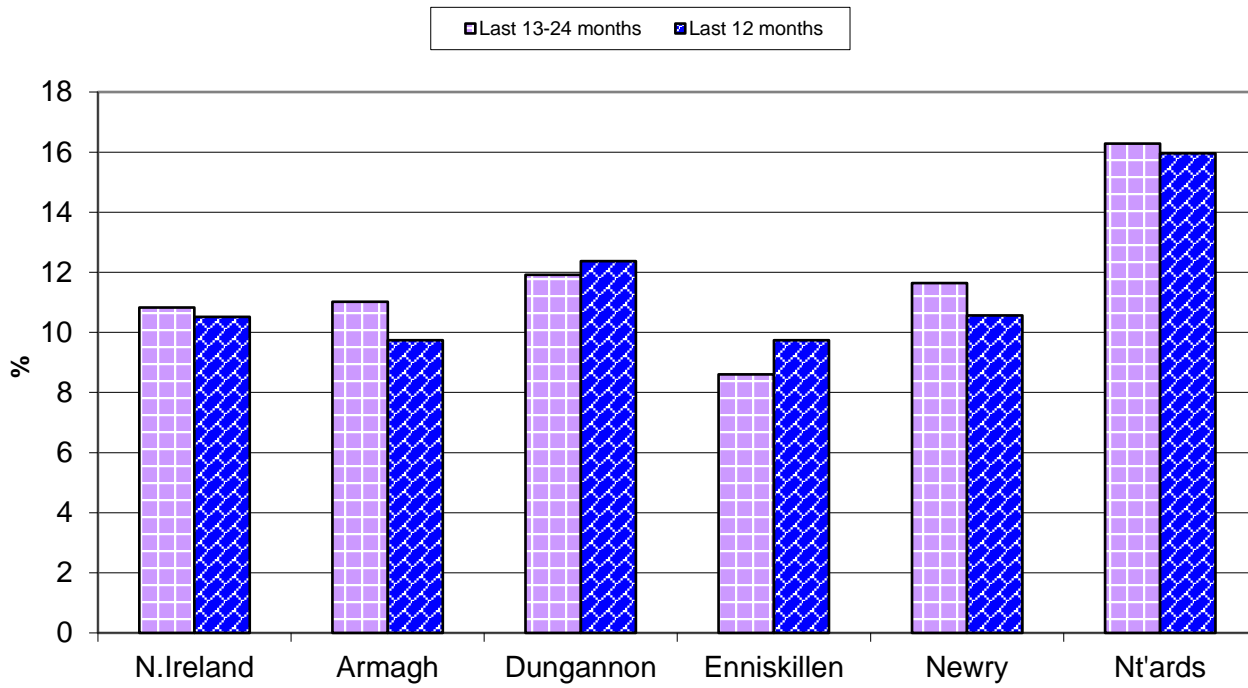
^ numerator includes all herds that had confirmed TB within the 12 month period

Annual confirmed TB herd prevalence by DVO (Northern Region)



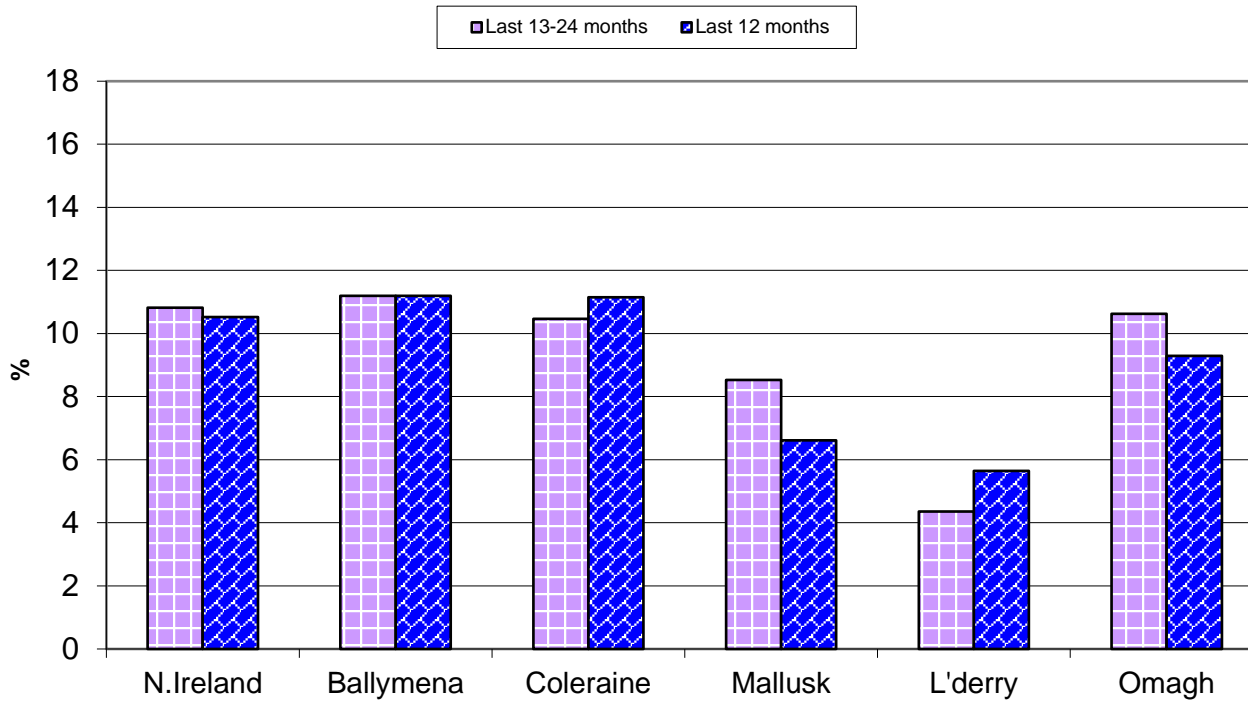
^ numerator includes all herds that had confirmed TB within the 12 month period

Annual confirmed TB herd prevalence[^] by DVO (Southern Region)



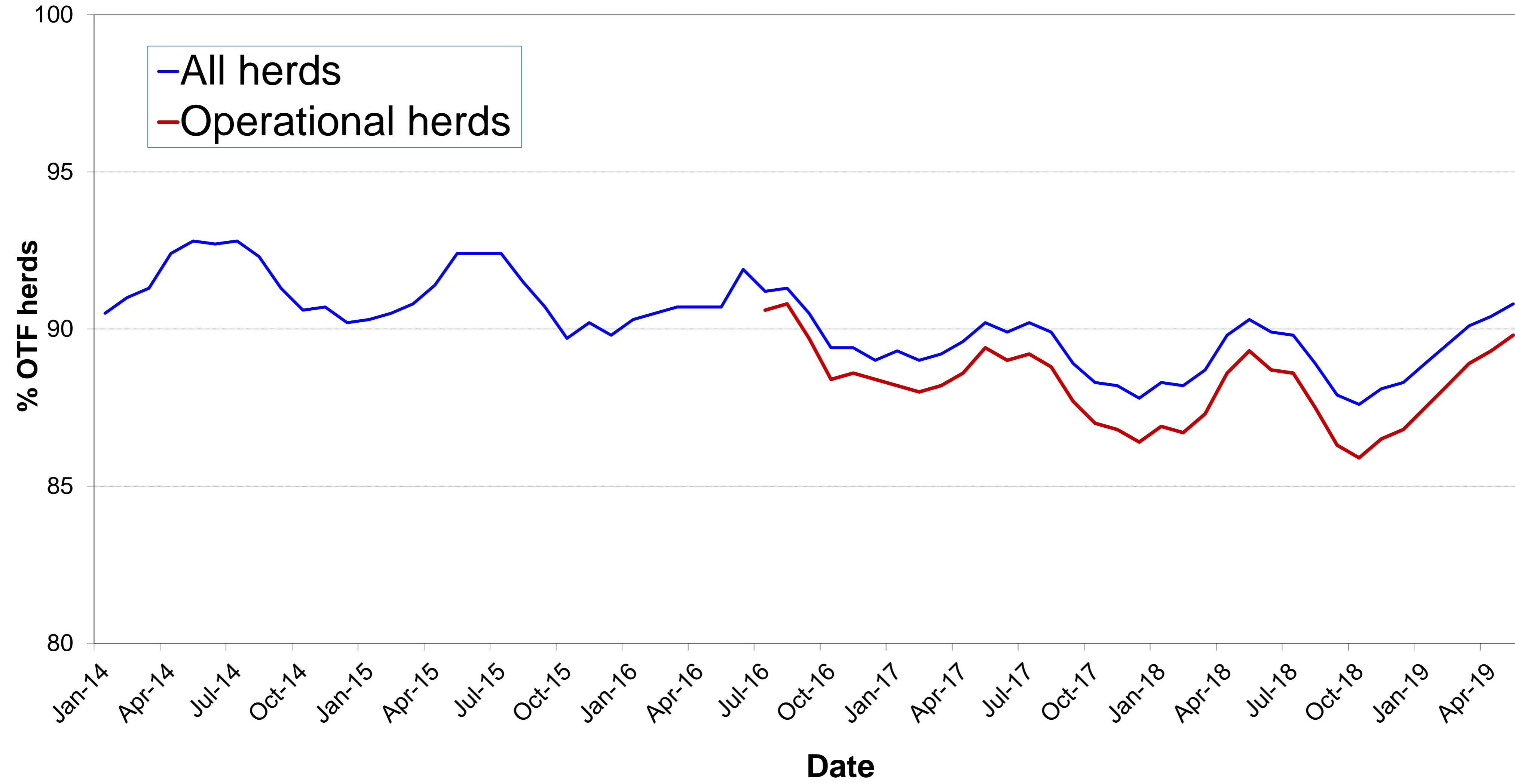
[^] numerator includes all herds that had confirmed TB within the 12 month period

Annual confirmed TB herd prevalence[^] by DVO (Northern Region)



[^] numerator includes all herds that had confirmed TB within the 12 month period

% herds that are officially tuberculosis free (OTF herds)



Month = May 2019

Ref.	Total	Armagh	Ballymena	Coleraine	Dungannon	Enniskillen	Mallusk	L'derry	Newry	Nt'ards	Omagh	
d1	No. of herds with TB reactors during month	283	24	21	29	22	32	22	4	49	43	37
d2	No. of new reactor herds during month	171	16	13	18	11	22	14	2	28	23	24
d3	No. of new reactor herds since start of year	745	72	51	82	77	98	52	14	129	95	75
d4	No. of new reactor herds in the previous 12 months	1912	183	141	237	206	244	101	47	288	251	214
d26	No. of new reactor herds in the previous 13-24 months	2146	199	141	249	308	258	114	45	338	224	270
d5	No. of TB reactor animals during month	1122	102	37	60	92	179	34	59	242	196	121
d6	No. of TB reactor animals since start of year	5493	502	251	361	642	668	303	149	1179	900	538
d7	No. of reactor animals in the previous 12 months	14246	1254	756	1288	1654	1831	601	312	2708	2138	1704
d27	No. of reactor animals in the previous 13-24 months	15963	1039	672	1416	2533	2590	645	169	3252	1592	2055
d20	Cumulative herd incidence in year (%)	4.78	4.74	5.05	4.67	4.21	4.91	4.66	2.69	4.96	6.95	3.97
d9	Annual herd incidence over the last 12 months (%)	8.47	8.17	10.48	9.58	7.57	8.30	6.40	5.41	7.82	13.49	7.47
d28	Annual herd incidence over the last 13-24 months (%)	9.37	8.72	10.31	9.90	11.12	8.67	7.16	5.15	9.10	11.85	9.25
d16	2018 Herd Incidence (%)	9.22	8.60	10.79	11.51	9.66	8.86	6.13	6.08	8.16	13.18	8.35
d10	2017 Herd Incidence (%)	9.61	9.33	11.55	9.53	10.45	8.24	7.59	4.41	9.80	12.96	9.83
d11	2016 Herd Incidence (%)	7.45	8.23	6.34	8.72	8.77	6.58	4.52	3.41	6.35	10.62	8.01
d38	2015 Herd Incidence (%)	7.15	6.29	6.21	9.31	6.75	6.41	5.26	8.59	6.54	8.92	7.77
d30	2014 Herd Incidence (%)	6.03	4.84	7.24	7.71	5.02	5.48	5.24	4.83	5.55	8.03	6.62
d21	Cumulative animal incidence in year (%)	0.450	0.415	0.275	0.215	0.470	0.579	0.282	0.349	0.693	0.644	0.382
d12	Annual animal incidence over the last 12 months (%)	0.826	0.673	0.609	0.551	0.786	1.099	0.396	0.468	1.084	1.098	0.796
d29	Annual animal incidence over the last 13-24 months (%)	0.910	0.546	0.533	0.606	1.172	1.501	0.427	0.256	1.270	0.812	0.946
d15	2018 Animal Incidence (%)	0.879	0.598	0.579	0.646	0.952	1.239	0.406	0.371	1.090	0.934	1.040
d13	2017 Animal Incidence (%)	0.911	0.785	0.587	0.610	1.002	1.453	0.411	0.238	1.325	0.956	0.717
d14	2016 Animal Incidence (%)	0.697	0.539	0.237	0.567	0.765	1.092	0.269	0.238	0.731	0.885	0.857
d39	2015 Animal Incidence (%)	0.661	0.504	0.310	0.486	0.612	0.707	0.256	0.661	0.848	0.889	0.855
d31	2014 Animal Incidence (%)	0.550	0.350	0.349	0.476	0.364	0.786	0.244	0.199	0.815	0.781	0.551
d34	APT during current month	4.33	4.88	1.60	1.72	4.00	7.16	1.37	7.76	7.47	6.11	3.45
d22	APT since start of year	3.70	3.55	2.22	1.76	3.98	4.86	2.39	2.95	5.84	5.14	3.12
d17	Current 12 month moving average APT	4.38	3.99	3.13	2.82	4.50	6.07	2.39	3.05	5.91	5.51	4.56

d18	2018 APT	4.67	3.57	3.02	3.27	5.29	6.95	2.55	2.50	5.88	4.84	6.12
d19	2017 APT	5.07	4.57	3.40	3.31	5.89	8.74	2.78	1.73	7.57	5.00	4.24
d42	2016 APT	4.23	3.45	1.63	3.14	4.99	7.28	1.98	1.72	4.62	5.20	5.20
d40	2015 APT	4.06	3.37	2.08	2.80	4.31	4.46	1.88	4.51	5.33	5.06	5.38
d32	2014 APT	3.55	2.39	2.18	3.24	2.78	5.24	1.79	1.58	5.08	4.64	3.65
d23	No. negative in contacts since start of year	282	51	5	27	41	62	20	4	14	20	38
d46	No. negative in contacts over last 12 months	895	75	98	86	141	91	56	10	97	160	81
d24	No. negative in contacts during 2018	999	57	103	109	151	62	40	10	165	155	147
d25	No. negative in contacts during 2017	891	92	14	189	43	83	50	1	242	74	103
d43	No. negative in contacts during 2016	579	37	11	78	24	105	8	57	17	63	179
d41	No. negative in contacts during 2015	755	59	10	23	62	37	45	9	73	95	342
d33	No. negative in contacts during 2014	1060	40	10	100	227	93	29	9	201	35	316
d35	Reactor removal time 2019	8.9	9.6	8.2	8.9	8.9	7.4	9.6	8.9	9.6	8.9	6.9
d37	Reactor removal time 2018	9.6	13.0	8.9	8.9	11.0	9.6	12.3	8.9	12.3	9.6	8.9
d47	Reactor removal time 2017	9.6	11.6	8.2	8.9	12.3	9.6	9.6	8.2	12.3	11.6	8.2
D44	Reactor removal time 2016	8.9	11.0	8.9	8.2	8.2	8.9	8.9	8.2	8.9	8.2	8.2
d36	Reactor removal time 2015	8.9	9.6	9.6	8.9	8.9	8.2	8.9	8.2	9.6	9.6	8.2
d45	Reactor removal time 2014	8.9	9.6	8.9	8.9	8.9	8.9	8.9	8.2	10.3	8.9	8.2

Tuberculosis: number of reactor herds by month and by DVO in 2019 and unique herd breakdowns during the year

2019		DVO_CODE										
Year	Month	Armagh	Ballymena	Coleraine	Dungannon	Enniskillen	L'Derry	Mallusk	Newry	Nt'Ards	Omagh	Total
2019	1	18	14	13	25	26	3	10	24	20	11	164
2019	2	11	6	20	15	16	2	10	22	14	16	132
2019	3	14	9	11	14	16	4	8	34	18	10	138
2019	4	13	9	20	12	18	3	10	21	20	14	140
2019	5	16	13	18	11	22	2	14	28	23	24	171
2019	6											0
2019	7											0
2019	8											0
2019	9											0
2019	10											0
2019	11											0
2019	12											0
Total		72	51	82	77	98	14	52	129	95	75	745

Unique Herd Breakdowns		DVO_CODE									
Year	Armagh	Ballymena	Coleraine	Dungannon	Enniskillen	L'Derry	Mallusk	Newry	Nt'Ards	Omagh	Total Herds
2019	118	85	137	146	137	27	84	216	180	128	1258

Tuberculosis: number of reactor herds by month and by DVO in 2018 and unique herd breakdowns during the year

2018		DVO_CODE										
Year	Month	Armagh	Ballymena	Coleraine	Dungannon	Enniskillen	L'Derry	Mallusk	Newry	Nt'Ards	Omagh	Total
2018	1	18	12	22	26	22	4	15	25	20	16	180
2018	2	15	7	35	27	28	9	9	31	22	18	201
2018	3	14	20	32	31	23	1	18	32	23	29	223
2018	4	18	12	24	22	22	3	1	29	13	19	163
2018	5	15	6	18	29	21	3	4	26	13	20	155
2018	6	8	9	21	12	13	4	5	17	19	15	123
2018	7	8	4	17	19	21	4	2	21	16	16	128
2018	8	22	15	23	25	19	0	5	17	20	16	162
2018	9	19	11	25	17	20	4	1	20	34	18	169
2018	10	16	17	20	21	35	4	12	27	22	25	199
2018	11	19	22	31	18	26	8	12	32	28	32	228
2018	12	19	12	18	17	12	9	12	25	17	17	158
Total		191	147	286	264	262	53	96	302	247	241	2089

Unique Herd Breakdowns		DVO_CODE									
Year	Armagh	Ballymena	Coleraine	Dungannon	Enniskillen	L'Derry	Mallusk	Newry	Nt'Ards	Omagh	Total Herds
2018	248	194	376	381	335	61	125	440	321	326	2807

Tuberculosis: number of reactor herds by month and by DVO in 2017 and unique herd breakdowns during the year

2017		DVO_CODE										
Year	Month	Armagh	Ballymena	Coleraine	Dungannon	Enniskillen	L'Derry	Mallusk	Newry	Nt'Ards	Omagh	Total
2017	1	31	22	24	32	20	7	9	38	22	29	234
2017	2	15	16	19	19	22	2	11	33	20	16	173
2017	3	19	15	27	30	21	1	17	38	28	29	225
2017	4	19	13	27	23	24	2	9	27	26	28	198
2017	5	11	8	24	15	17	2	7	34	16	20	154
2017	6	9	8	18	25	16	1	4	20	24	16	141
2017	7	11	7	9	9	8	3	4	29	15	18	113
2017	8	21	16	5	23	20	1	5	24	20	8	143
2017	9	22	12	20	18	30	3	6	24	15	21	171
2017	10	16	18	17	20	26	4	15	27	26	32	201
2017	11	21	9	31	42	22	9	16	47	17	42	256
2017	12	19	14	18	36	20	4	17	24	16	31	199
Total		214	158	239	292	246	39	120	365	245	290	2208

Unique Herd Breakdowns		DVO_CODE									
Year	Armagh	Ballymena	Coleraine	Dungannon	Enniskillen	L'Derry	Mallusk	Newry	Nt'Ards	Omagh	Total Herds
2017	286	179	317	391	302	46	136	487	336	369	2849

A herd is defined as being a TB reactor herd if it had at least one TB reactor animal in that month and no TB reactor animals during the previous 12 months.

A TB unique herd breakdown is defined as a herd which has had at least one TB reactor during the specified calendar year irrespective of any TB reactors during the previous calendar year.

Tuberculosis: number of reactor animals by month and by DVO 2019

2019		DVO_CODE										
Year	Month	Armagh	Ballymena	Coleraine	Dungannon	Enniskillen	L'Derry	Mallusk	Newry	Nt'Ards	Omagh	Total
2019	1	96	70	71	262	197	24	48	238	123	126	1255
2019	2	120	53	83	73	97	32	64	180	151	99	952
2019	3	108	47	51	143	74	21	71	320	341	133	1309
2019	4	76	44	96	72	121	38	61	199	89	59	855
2019	5	102	37	60	92	179	34	59	242	196	121	1122
2019	6											0
2019	7											0
2019	8											0
2019	9											0
2019	10											0
2019	11											0
2019	12											0
Total		502	251	361	642	668	149	303	1179	900	538	5493

Tuberculosis: number of reactor animals by month and by DVO 2018

2018		DVO_CODE										
Year	Month	Armagh	Ballymena	Coleraine	Dungannon	Enniskillen	L'Derry	Mallusk	Newry	Nt'Ards	Omagh	Total
2018	1	71	37	96	199	178	20	88	233	180	206	1308
2018	2	40	69	121	186	262	24	71	159	123	149	1204
2018	3	81	69	122	308	199	15	90	307	116	327	1634
2018	4	117	22	166	165	186	12	48	305	101	186	1308
2018	5	64	34	99	175	159	14	17	258	81	222	1123
2018	6	54	150	101	142	117	12	24	186	146	116	1048
2018	7	95	20	120	140	141	29	2	207	189	128	1071
2018	8	121	41	136	164	157	25	19	228	213	223	1327
2018	9	113	45	101	110	229	10	41	242	179	156	1226
2018	10	144	59	173	153	256	22	91	204	138	195	1435
2018	11	94	130	200	110	149	39	80	271	273	225	1571
2018	12	131	60	96	193	114	26	41	191	100	123	1075
Total		1125	736	1531	2045	2147	248	612	2791	1839	2256	15330

Tuberculosis: number of reactor animals by month and by DVO 2017

2017		DVO_CODE										
Year	Month	Armagh	Ballymena	Coleraine	Dungannon	Enniskillen	L'Derry	Mallusk	Newry	Nt'Ards	Omagh	Total
2017	1	266	73	113	145	219	34	23	323	241	135	1572
2017	2	82	59	129	109	200	3	47	298	180	122	1229
2017	3	238	52	150	154	193	30	156	285	179	146	1583
2017	4	193	33	102	154	191	6	42	203	169	132	1225
2017	5	54	81	133	100	121	2	28	254	92	89	954
2017	6	34	26	211	146	184	4	15	272	167	93	1152
2017	7	111	34	91	88	232	12	54	233	169	108	1132
2017	8	45	145	67	220	279	2	42	236	187	84	1307
2017	9	152	55	144	161	219	14	37	306	125	168	1381
2017	10	122	52	99	200	304	8	36	346	123	133	1423
2017	11	94	65	102	449	216	30	73	322	158	227	1736
2017	12	108	64	98	236	172	14	74	275	62	152	1255
Total		1499	739	1439	2162	2530	159	627	3353	1852	1589	15949

A TB reactor animal is defined as an animal where the manual interpretation field for a skin test is positive ('P') with the first test date being taken as the time at which the animal became a reactor. Animals with lesions at routine slaughter ('LRS') are not taken into account.

		Month = May 2019										
Ref.		Total	Armagh	Ballymena	Coleraine	Dungannon	Enniskillen	Mallusk	L'derry	Newry	Nt'ards	Omagh
b16	No. herds with any test completed in month	3733	321	278	425	414	488	269	132	601	319	486
b17	No. herds with any test, from start of year	16119	1603	1034	1810	1916	2048	1155	543	2669	1385	1956
b29	All herds with any test, from start of year	16667	1627	1076	1883	1998	2094	1185	570	2759	1456	2019
b18	No. herds with any test, from start of year (no cattle)	548	24	42	73	82	46	30	27	90	71	63
b19	No. herds with herd test completed in month	3383	269	257	392	343	452	241	118	554	301	456
b20	No. herds with herd test, from start of year	15602	1519	1009	1757	1827	1995	1117	520	2602	1366	1890
b30	All herds with herd test, from start of year	16152	1543	1051	1830	1910	2041	1147	547	2692	1437	1954
b21	No. herds with herd test, from start of year (no cattle)	550	24	42	73	83	46	30	27	90	71	64
b22	No. herds with herd test during last 12 months	22575	2239	1346	2474	2721	2941	1577	868	3682	1861	2866
b31	No. herds with herd test during last 13-24 months	22901	2283	1367	2515	2769	2977	1593	874	3714	1891	2918
b28	No. herds with herd test during 2018	22656	2220	1362	2484	2733	2957	1566	871	3703	1874	2886
b23	No. herds with herd test during 2017	22978	2293	1368	2507	2794	2986	1581	884	3725	1891	2949
b24	No. herds with herd test during 2016	23345	2297	1387	2557	2840	3057	1615	881	3750	1940	3021
b39	No. herds with herd test during 2015	23604	2304	1417	2610	2875	3121	1654	873	3748	1939	3063
b32	No. herds with herd test during 2014	23149	2274	1395	2490	2829	3049	1621	890	3658	1892	3051
b25	No. herds with any risk test completed	8328	817	635	988	959	1057	617	202	1444	747	862
b26	No. herds with herd risk test completed	6539	536	543	801	690	922	467	143	1163	601	673
b27	No. herds with restricted herd test completed	2727	285	183	310	345	307	162	66	461	328	280

Month = May 2019

Ref	Total	Armagh	Ballymena	Coleraine	Dungannon	Enniskillen	Mallusk	L'derry	Newry	Nt'ards	Omagh	
c1	Total number of tests in current month	4142	375	318	457	467	508	300	155	662	365	535
c2	Total number of tests from start of year	22240	2344	1465	2526	2704	2576	1663	735	3715	1957	2555
c3	No. tests during the same time period in the previous year	23274	2378	1459	2708	3126	2748	1622	708	3776	2021	2728
c4	% change between years	-4.6	-1.5	0.4	-7.2	-15.6	-6.7	2.5	3.7	-1.6	-3.3	-6.8
c5	No. tests in the previous 12 months	49234	5246	3235	5550	6207	5700	3429	1565	8154	4441	5707
c6	No. animal tests in current month	258981	20903	23161	34915	23022	25002	24845	7607	32400	32073	35053
c7	No. animal tests from start of year	1485581	141505	113148	205441	161392	137437	126531	50464	201743	175209	172711
c8	No. animal tests during the same time period in the previous year	1515563	142518	115298	217776	180487	144558	114588	47335	217934	167304	167765
c9	% change between years	-2.0	-0.7	-1.9	-6.0	-11.8	-5.2	9.4	6.2	-8.0	4.5	2.9
c10	No. animal tests in previous 12 months	3254762	314512	241200	456108	367498	301811	251920	102268	458103	387907	373435
c11	No. cattle herds eligible for TB testing	25179	2522	1501	2748	3029	3204	1772	989	4070	2127	3217
c12	No. cattle eligible for TB testing	1595630	162365	110110	207260	179459	155692	61755	135951	216331	169907	196800
c13	No. restricted herd tests during month	742	57	54	94	86	81	57	20	120	92	81
c14	No. animals tested	105873	8498	8612	14266	10869	8359	10618	3180	11561	16358	13552
c15	No. herd tests during month	3384	269	257	392	344	452	241	118	554	301	456
c16	No. animals tested	257418	20694	23011	34770	22805	24899	24695	7503	32184	31973	34884
c17	No. individual tests during month	758	106	61	65	123	56	59	37	108	64	79
c18	No. animals tested	1563	209	150	145	217	103	150	104	216	100	169
c23	No. animals TB tested since start of year	1221007	120935	91213	167868	136735	115273	107492	42746	170072	139737	140844
c19	No. animals TB tested in previous 12 months	1724956	186192	124188	233730	210466	166533	151660	66647	249728	194697	214088
c24	No. animals TB tested in previous 13-24 months	1753774	190325	125980	233756	216107	172602	150992	66026	256125	196072	217338
c22	No. animals TB tested in 2018	1744432	188181	127178	237125	214744	173248	150915	66810	256145	196845	216977
c20	No. animals TB tested in 2017	1750170	190842	125843	235774	215867	174063	152684	66667	253109	193787	221579
c21	No. animals TB tested in 2016	1709508	184410	120059	232831	209246	170575	148773	67744	243436	184600	219947
c26	No. animals TB tested in 2015	1662355	173129	118652	230608	200883	169615	144926	67583	230622	180647	213478
c25	No. animals TB tested in 2014	1607660	166774	117083	214490	191534	163019	143992	61765	225643	177960	207187

Month = May 2019

Ref		Total	Armagh	Ballymena	Coleraine	Dungannon	Enniskillen	Mallusk	L'derry	Newry	Nt'ards	Omagh
	<i>All Herds</i>											
f1	No. of Officially Tuberculosis Free Herds (OTF)	27283	2700	1637	3120	3304	3377	2032	1199	4315	2046	3553
f2	No. of Officially Tuberculosis Suspended Herds (OTS)	925	131	42	61	94	79	96	17	182	101	122
f3	No. of Officially Tuberculosis Withdrawn Herds (OTW)	1842	221	89	177	207	156	141	35	377	259	180
f4	% herds that are OTF	90.8	88.5	92.6	92.9	91.7	93.5	89.6	95.8	88.5	85.0	92.2
f5	% herds that are OTS	3.1	4.3	2.4	1.8	2.6	2.2	4.2	1.4	3.7	4.2	3.2
f6	% herds that are OTW	6.1	7.2	5.0	5.3	5.7	4.3	6.2	2.8	7.7	10.8	4.7
	<i>Operational Herds</i>											
	No. of Officially Tuberculosis Free Herds (OTF)	21784	2123	1318	2442	2651	2847	1509	902	3477	1700	2815
	No. of Officially Tuberculosis Suspended Herds (OTS)	738	95	41	57	72	64	63	16	147	84	99
	No. of Officially Tuberculosis Withdrawn Herds (OTW)	1743	203	89	174	197	152	125	32	360	247	164
	% herds that are OTF	89.8	87.7	91.0	91.4	90.8	92.9	88.9	94.9	87.3	83.7	91.5
	% herds that are OTS	3.0	3.9	2.8	2.1	2.5	2.1	3.7	1.7	3.7	4.1	3.2
	% herds that are OTW	7.2	8.4	6.1	6.5	6.7	5.0	7.4	3.4	9.0	12.2	5.3

		Month = January 2019										
		(Data lagged by 4 months)										
Ref		Total	Armagh	Ballymena	Coleraine	Dungannon	Enniskillen	Mallusk	L'derry	Newry	Nt'ards	Omagh
e19	Num. TB culture positive animals that were not TB reactors in last 12 months	880	108	45	61	119	39	42	9	231	148	78
e20	Num. TB culture positive animals that were not TB reactors in last 13-24 months	799	93	41	86	122	39	49	8	181	124	56
e2	Num. TB culture positive animals that were not TB reactors in 2018	866	114	40	63	120	34	43	9	231	136	76
e3	Num. TB culture positive animals that were not TB reactors in 2017	782	91	41	83	113	40	51	8	168	128	59
e4	Num. TB culture positive animals that were not TB reactors in 2016	714	64	35	89	101	36	34	13	173	104	65
e5	Num. TB culture positive animals that were not TB reactors in 2015	676	71	41	95	84	27	38	18	120	112	70
e6	Num. TB culture positive animals that were not TB reactors in 2014	575	68	37	54	66	38	53	12	100	80	67
e21	No. herds with TB culture positive animals that were not TB reactors in last 12 months	530	71	23	42	81	25	30	9	113	83	53
e22	No. herds with TB culture positive animals that were not TB reactors in last 13-24 months	472	59	28	46	60	25	33	7	99	75	40
e8	No. herds with TB culture positive animals that were not TB reactors in 2018	525	75	21	44	76	22	32	9	117	76	53
e9	No. herds with TB culture positive animals that were not TB reactors in 2017	466	56	28	43	62	26	31	8	93	77	42
e10	No. herds with TB culture positive animals that were not TB reactors in 2016	469	45	21	57	63	26	31	11	100	68	47
e11	No. herds with TB culture positive animals that were not TB reactors in 2015	449	50	25	70	55	20	27	12	67	78	45
e12	No. herds with TB culture positive animals that were not TB reactors in 2014	372	47	25	37	48	27	27	10	66	51	34
e23	% of TB animals that were TB culture positive that were not TB reactors in last 12 months	5.4	8.6	5.5	3.9	5.3	1.8	6.8	3.4	7.6	7.7	3.5
e24	% of TB animals that were TB culture positive that were not TB reactors in last 13-24 months	4.8	6.7	5.5	5.7	5.2	1.5	6.6	5.2	5.3	6.5	3.3
e14	% of TB animals that were TB culture positive that were not TB reactors in 2018	5.3	9.2	5.2	4.0	5.5	1.6	6.6	3.5	7.6	6.9	3.3
e15	% of TB animals that were TB culture positive that were not TB reactors in 2017	4.7	5.7	5.3	5.5	5.0	1.6	7.5	4.8	4.8	6.5	3.6
e16	% of TB animals that were TB culture positive that were not TB reactors in 2016	5.6	6.0	10.9	6.3	5.9	1.9	7.8	7.5	8.9	6.0	3.3
e17	% of TB animals that were TB culture positive that were not TB reactors in 2015	5.8	7.5	10.0	7.8	6.4	2.2	9.3	3.9	5.8	6.5	3.7
e18	% of TB animals that were TB culture positive that were not TB reactors in 2014	6.1	10.4	8.3	5.0	8.7	2.9	13.1	8.9	5.2	5.4	5.5

		Month = January 2019										
Ref	(Data lagged by 4 months)	Total	Armagh	Ballymena	Coleraine	Dungannon	Enniskillen	Mallusk	L'derry	Newry	Nt'ards	Omagh
g31	No. of confirmed TB reactors during last 12 months	6490	488	335	658	918	948	223	120	1087	863	850
g32	No. of confirmed TB reactors during last 13-24 months	6910	601	375	732	900	967	353	58	1287	876	761
g2	No. of confirmed TB reactors 2018	6481	495	317	680	877	920	229	118	1066	876	903
g3	No. of confirmed TB reactors 2017	7059	692	392	735	884	976	334	72	1324	925	725
g4	No. of confirmed TB reactors 2016	5339	429	145	714	807	759	174	98	622	801	790
g5	No. of confirmed TB reactors 2015	5306	428	228	658	591	561	194	284	784	718	860
g6	No. of confirmed TB reactors 2014	4346	294	229	591	392	561	156	84	725	722	592
g33	Total animals with confirmed TB during last 12 months	7370	596	380	719	1037	987	265	129	1318	1011	928
g34	Total animals with confirmed TB in last 13-24 months	7709	694	416	818	1022	1006	402	66	1468	1000	817
g8	Total animals with confirmed TB in 2018	7347	609	357	743	997	954	272	127	1297	1012	979
g9	Total animals with confirmed TB in 2017	7841	783	433	818	997	1016	385	80	1492	1053	784
g10	Total animals with confirmed TB in 2016	6053	493	180	803	908	795	208	111	795	905	855
g11	Total animals with confirmed TB in 2015	5982	499	269	753	675	588	232	302	904	830	930
g12	Total animals with confirmed TB in 2014	4921	362	266	645	458	599	209	96	825	802	659
g35	Confirmed TB animal prevalence in last 12 months (%)	0.422	0.317	0.300	0.304	0.483	0.570	0.175	0.194	0.516	0.513	0.428
g36	Confirmed TB animal prevalence in last 13-24 months (%)	0.440	0.365	0.332	0.347	0.475	0.584	0.265	0.099	0.578	0.511	0.371
g14	Confirmed TB animal prevalence in 2018 (%)	0.421	0.324	0.281	0.313	0.464	0.551	0.180	0.190	0.506	0.514	0.451
g15	Confirmed TB animal prevalence in 2017 (%)	0.449	0.416	0.340	0.345	0.464	0.586	0.255	0.120	0.582	0.535	0.361
g16	Confirmed TB animal prevalence in 2016 (%)	0.354	0.267	0.150	0.345	0.434	0.466	0.140	0.164	0.327	0.489	0.389
g17	Confirmed TB animal prevalence in 2015 (%)	0.360	0.288	0.226	0.326	0.336	0.347	0.160	0.447	0.392	0.459	0.436
g18	Confirmed TB animal prevalence in 2014 (%)	0.306	0.217	0.227	0.301	0.239	0.367	0.145	0.155	0.366	0.451	0.318
g37	No. herds with confirmed TB in last 12 months	2379	218	152	277	338	287	104	49	389	298	267
g38	No. herds with confirmed TB in last 13-24 months	2477	251	153	263	332	256	134	38	431	308	311
g20	No. herds with confirmed TB in 2018	2380	227	147	283	334	280	108	48	392	287	274
g21	No. herds with confirmed TB in 2017	2494	254	158	260	339	253	126	42	430	315	317
g22	No. herds with confirmed TB in 2016	2045	205	99	281	293	198	87	45	297	247	293
g23	No. herds with confirmed TB in 2015	1936	163	103	296	222	201	101	77	272	228	273
g24	No. herds with confirmed TB in 2014	1606	126	123	199	171	181	85	50	253	195	223
g39	Confirmed TB herd prevalence in last 12 months (%)	10.52	9.74	11.19	11.16	12.38	9.75	6.61	5.65	10.56	15.96	9.29
g40	Confirmed TB herd prevalence in last 13-24 months (%)	10.82	11.02	11.19	10.47	11.92	8.60	8.53	4.36	11.64	16.28	10.62

g26	Confirmed TB herd prevalence in 2018 (%)	10.50	10.23	10.79	11.39	12.22	9.47	6.90	5.51	10.59	15.31	9.49
g27	Confirmed TB herd prevalence in 2017 (%)	10.85	11.08	11.55	10.37	12.13	8.47	7.97	4.75	11.54	16.66	10.75
g28	Confirmed TB herd prevalence in 2016 (%)	8.76	8.92	7.14	10.99	10.32	6.48	5.39	5.11	7.92	12.73	9.70
g29	Confirmed TB herd prevalence in 2015 (%)	8.20	7.07	7.27	11.34	7.72	6.44	6.11	8.82	7.26	11.76	8.91
g30	Confirmed TB herd prevalence in 2014 (%)	6.94	5.54	8.82	7.99	6.04	5.94	5.24	5.62	6.92	10.31	7.31

Explanatory Comments for Tuberculosis Statistics - B. Testing Herds

Ref	Data Title	Explanation
B16	No. herds with any test completed in month	Test of any disease status and size (herd or animal-level). Tests with no animals are excluded.
B17	No. herds with any test, from start of year	Test of any disease status and size (herd or animal-level) carried out on a herd since 1st January. Tests with no animals are excluded.
B29	All herds with any test, from start of year	Skin test of any disease status and size (herd or animal-level) carried out on a herd since 1st January. Tests with no animals are included.
B18	No. herds with any test, from start of year (no cattle)	Herd or individual test of any disease status (routine, risk or restricted) where no cattle were recorded at all such tests since 1st January.
B19	No. herds with herd test completed in month	Herd level test of any disease status (routine, risk or restricted) completed during the above month. Tests with no animals are excluded.
B20	No. herds with herd test, from start of year	Herd level test of any disease status (routine, risk or restricted) completed since 1st January. Tests with no animals are excluded.
B30	All herds with herd test, from start of year	Herd level test of any disease status (routine, risk or restricted) completed since 1st January. Tests with no animals are included.
B21	No. herds with herd test, from start of year (no cattle)	Herd level test of any disease status (routine, risk or restricted) where no cattle were recorded at all such herd tests since 1st January.
B22	No. herds with herd test during last 12 months	Herd level test of any disease status (routine, risk or restricted) completed in the 12 month period from the above month. Tests with no animals are excluded.
B31	No. herds with herd test during last 13-24 months	Herd level test of any disease status (routine, risk or restricted) completed in the 13-24 months from the above month. Tests with no animals are excluded.
B39	No. herds with herd test during the year	Herd level test of any disease status (routine, risk or restricted) completed in the calendar year. Tests with no animals are excluded.
B32	No. herds with herd test during the year	Herd level test of any disease status (routine, risk or restricted) completed in the calendar year. Tests with no animals are excluded.
B28	No. herds with herd test during the year	Herd level test of any disease status (routine, risk or restricted) completed in the calendar year. Tests with no animals are excluded.
B23	No. herds with herd test during the year	Herd level test of any disease status (routine, risk or restricted) completed in the calendar year. Tests with no animals are excluded.
B24	No. herds with herd test during the year	Herd level test of any disease status (routine, risk or restricted) completed in the calendar year. Tests with no animals are excluded.
B25	No. herds with any risk test completed	Herd has had a herd or individual level risk test since start of calendar year and number tested > 0.
B26	No. herds with herd risk test completed	Herd has had a herd level risk test since start of calendar year and number tested > 0.
B27	No. herds with restricted herd test completed	Herd has had a restricted herd test (RHT, RH1, RH2) since start of calendar year and number tested > 0.

Explanatory Comments for Tuberculosis Statistics - C. Testing Animals

Ref	Data Title	Explanation
C1	Total number of tests in current month	Number of herds and individual tests performed in the month stated above. Tests with no animals are excluded.
C2	Total number of tests from start of year	From 1st January. Tests with no animals are excluded.
C3	No. tests during the same time period in the previous year	From 1st January of previous year. Tests with no animals are excluded.
C4	% change between years	Difference between the number of tests carried out during the current year and the number carried out in the previous expressed as a percentage.
C5	No. tests in the previous 12 months	Last 12 month period from the above month. Tests with no animals are excluded.
C6	No. animal tests in current month	Animal test = a count of the number of animals tested within each herd or individual test. Some animals may have been tested multiple times during the year.
C7	No. animal tests from start of year	Number of animal tests carried out since 1st January.
C8	No. animal tests during the same time period in the previous year	Number of animal tests carried out from 1st January in the previous year over the same time interval as recorded for the current year.
C9	% change between years	Difference between the number of animal tests during the current year and the number carried out in the previous expressed as a percentage.
C10	No. animal tests in previous 12 months	Last 12 month period from the above month.
C11	No. cattle eligible for TB testing	Based on the average number of animals presented at TB herd tests over last 4 years.
C12	No. cattle herds eligible for TB testing	Based on cattle being presented for a TB herd tests over last 4 years. Herds with '0' cattle are excluded.

C13	No. restricted herd tests during month	All restricted herd tests (RHT, RH1 and RH2) carried out during the above month.
C14	No. animals tested	Total of the animals reported as being tested within restricted herd tests (RHT, RH1, RH2) during the above month.
C15	No. herd tests during month	Total of the animals reported as being tested within all herd tests during the above month.
C16	No. animals tested	Total of the animals reported as being tested within all herd tests during the above month.
C17	No. individual tests during month	Total of the animals reported as being tested within all individual tests during the above month.
C18	No. animals tested	Total of the animals reported as being tested within all individual tests during the above month.
C23	No. animals TB tested since start of year	Animals identified as having had at least one TB skin test since the start of the calendar year. Due to the same animals being sampled in different DVO areas, the 'Total' is not the sum of the DVO figures.
C19	No. animals TB tested in previous 12 months	Animals identified as having had at least one TB skin test during the last 12 month period from the above month. Due to the same animals being sampled in different DVO areas, the 'Total' is not the sum of the DVO figures.
C24	No. animals TB tested in previous 13-24 months	Animals identified as having had at least one TB skin test during the last 13-24 months from the above month. Due to the same animals being sampled in different DVO areas, the 'Total' is not the sum of the DVO figures.
C26	No. animals TB tested in the year	Animals identified as having had at least one TB skin test during the calendar year. Due to the same animals being sampled in different DVO areas, the 'Total' is not the sum of the DVO figures.
C25	No. animals TB tested in the year	Animals identified as having had at least one TB skin test during the calendar year. Due to the same animals being sampled in different DVO areas, the 'Total' is not the sum of the DVO figures.
C22	No. animals TB tested in the year	Animals identified as having had at least one TB skin test during the calendar year. Due to the same animals being sampled in different DVO areas, the 'Total' is not the sum of the DVO figures.
C20	No. animals TB tested in the year	Animals identified as having had at least one TB skin test during the calendar year. Due to the same animals being sampled in different DVO areas, the 'Total' is not the sum of the DVO figures.
C21	No. animals TB tested in the year	Animals identified as having had at least one TB skin test during the calendar year. Due to the same animals being sampled in different DVO areas, the 'Total' is not the sum of the DVO figures.
Explanatory Comments for Tuberculosis Statistics - D. Results		
Ref	Data Title	Explanation
D1	No. of herds with TB reactors during month	A herd is included in this figure if the herd number had a TB skin test reactor during the above month.
D2	No. of new reactor herds during month	A herd is defined as being a TB reactor herd if it had at least one TB reactor animal in that month and no TB reactor animals during the previous 12 months.
D3	No. of new reactor herds since start of year	= Since 1st January
D4	No. of new reactor herds in the previous 12 months	Last 12 month period from the above month.
D26	No. of new reactor herds in previous 13-24 months	Last 13-24 month period from the above month.
D5	No. of TB reactor animals during month	A TB reactor animal is defined as an animal where the manual interpretation field for a skin test is positive ('P') with the first test date being taken as the time at which the animal became a reactor. Currently animals with lesions at routine slaughter (*LRS*) are not taken into account.
D6	No. of TB reactor animals since start of year	= Since 1st January
D7	No. of reactor animals in the previous 12 months	Last 12 month period from the above month.
D27	No. of reactor animals in previous 13-24 months	Last 13-24 month period from the above month.
D20	Cumulative herd incidence in year (%)	Number of NEW reactor herds since the start of the calendar year as a proportion of cattle herds which have presented cattle for a TB herd test during the same time period.
D9	Annual herd incidence over the last 12 months (%)	Number of NEW reactor herds during the last 12 months as a proportion of cattle herds which have presented cattle for a TB herd test during the same time period.
D28	Annual herd incidence over the last 13-24 months (%)	Number of NEW reactor herds during the last 13-24 months as a proportion of cattle herds which have presented cattle for a TB herd test during the same time period.
D38	In-year Herd Incidence (%)	Number of NEW reactor herds during the year as a proportion of cattle herds which have presented cattle for a TB herd test during the same time period.
D30	In-year Herd Incidence (%)	Number of NEW reactor herds during the year as a proportion of cattle herds which have presented cattle for a TB herd test during the same time period.
D16	In-year Herd Incidence (%)	Number of NEW reactor herds during the year as a proportion of cattle herds which have presented cattle for a TB herd test during the same time period.
D10	In-year Herd Incidence (%)	Number of NEW reactor herds during the year as a proportion of cattle herds which have presented cattle for a TB herd test during the same time period.
D11	In-year Herd Incidence (%)	Number of NEW reactor herds during the year as a proportion of cattle herds which have presented cattle for a TB herd test during the same time period.
D21	Cumulative animal incidence in year (%)	Number of reactor animals during the above month as a proportion of cattle which have been presented for a TB test during the same time period.
D12	Annual animal incidence over the last 12 months (%)	Number of reactor animals during the last 12 months as a proportion of cattle which have been presented for a TB test during the same time period.
D29	Annual animal incidence over the last 13-24 months (%)	Number of reactor animals during the last 13-24 months as a proportion of cattle which have been presented for a TB test during the same time period.
D39	In year Animal Incidence (%)	Number of reactor animals during the year as a proportion of cattle which have been presented for a TB herd test during the same time period.

D31	In year Animal Incidence (%)	Number of reactor animals during the year as a proportion of cattle which have been presented for a TB herd test during the same time period.
D15	In year Animal Incidence (%)	Number of reactor animals during the year as a proportion of cattle which have been presented for a TB herd test during the same time period.
D13	In year Animal Incidence (%)	Number of reactor animals during the year as a proportion of cattle which have been presented for a TB herd test during the same time period.
D14	In year Animal Incidence (%)	Number of reactor animals during the year as a proportion of cattle which have been presented for a TB herd test during the same time period.
D34	APT during current month	= The reactor disclosure rate per 1,000 animal tests current calendar month.
D22	APT since start of year	The reactor disclosure rate per 1,000 animal tests since the start of the calendar year.
D17	Current 12 month moving average APT	The reactor disclosure rate per 1,000 animal tests. Current refers to the rate over the last 12 months.
D42	In year APT	The reactor disclosure rate per 1,000 animal tests during the calendar year.
D40	In year APT	The reactor disclosure rate per 1,000 animal tests during the calendar year.
D32	In year APT	The reactor disclosure rate per 1,000 animal tests during the calendar year.
D18	In year APT	The reactor disclosure rate per 1,000 animal tests during the calendar year.
D19	In year APT	The reactor disclosure rate per 1,000 animal tests during the calendar year.
D23	No. negative in contacts since start of year	Number of animals taken as negative in contacts since the start of the year.
d46	No. Negative in contacts over last 12 months (%)	= Number of negative in contacts during the last 12 months
D43	No. negative in contacts during the year	Number of animals taken as negative in contacts during the year.
D41	No. negative in contacts during the year	Number of animals taken as negative in contacts during the year.
D33	No. negative in contacts during the year	Number of animals taken as negative in contacts during the year.
D24	No. negative in contacts during the year	Number of animals taken as negative in contacts during the year.
D25	No. negative in contacts during the year	Number of animals taken as negative in contacts during the year.
D37	Reactor removal time during the year	Figures given are median values for working days estimated from calendar days (calendar days multiplied by 0.685). Reactors which are not yet slaughtered or where they they were first declared as reactors at slaughter are excluded.
D45	Reactor removal time during the year	Figures given are median values for working days estimated from calendar days (calendar days multiplied by 0.685). Reactors which are not yet slaughtered or where they they were first declared as reactors at slaughter are excluded.
D35	Reactor removal time during the year	Figures given are median values for working days estimated from calendar days (calendar days multiplied by 0.685). Reactors which are not yet slaughtered or where they they were first declared as reactors at slaughter are excluded.
D44	Reactor removal time during the year	Figures given are median values for working days estimated from calendar days (calendar days multiplied by 0.685). Reactors which are not yet slaughtered or where they they were first declared as reactors at slaughter are excluded.
D36	Reactor removal time during the year	Figures given are median values for working days estimated from calendar days (calendar days multiplied by 0.685). Reactors which are not yet slaughtered or where they they were first declared as reactors at slaughter are excluded.

g35	Confirmed TB animal prevalence in last 12 months (%)	Number of TB reactors that were confirmed during the last 12 months by the presence of visible lesions at slaughter and/or by laboratory confirmation (histopathology and/or culture) plus the number of other animals where M. bovis was cultured from TB-like lesions found at slaughter during the last 12 months that were not identified as TB reactor animals divided by the number of animals tuberculin tested during the last 12 months expressed as a %
g36	Confirmed TB animal prevalence in last 13-24 months (%)	Number of TB reactors that were confirmed during the last 13-24 months by the presence of visible lesions at slaughter and/or by laboratory confirmation (histopathology and/or culture) plus the number of other animals where M. bovis was cultured from TB-like lesions found at slaughter during the last 13-24 months that were not identified as TB reactor animals divided by the number of animals tuberculin tested during the last 13-24 months expressed as a %
g18	Confirmed TB animal prevalence in year (%)	Number of TB reactors that were confirmed during the year by the presence of visible lesions at slaughter and/or by laboratory confirmation (histopathology and/or culture) plus the number of other animals where M. bovis was cultured from TB-like lesions found at slaughter during the year that were not identified as TB reactor animals divided by the number of animals tuberculin tested during the year expressed as a %
g14	Confirmed TB animal prevalence in year (%)	Number of TB reactors that were confirmed during the year by the presence of visible lesions at slaughter and/or by laboratory confirmation (histopathology and/or culture) plus the number of other animals where M. bovis was cultured from TB-like lesions found at slaughter during the year that were not identified as TB reactor animals divided by the number of animals tuberculin tested during the year expressed as a %
g15	Confirmed TB animal prevalence in year (%)	Number of TB reactors that were confirmed during the year by the presence of visible lesions at slaughter and/or by laboratory confirmation (histopathology and/or culture) plus the number of other animals where M. bovis was cultured from TB-like lesions found at slaughter during the year that were not identified as TB reactor animals divided by the number of animals tuberculin tested during the year expressed as a %
g16	Confirmed TB animal prevalence in year (%)	Number of TB reactors that were confirmed during the year by the presence of visible lesions at slaughter and/or by laboratory confirmation (histopathology and/or culture) plus the number of other animals where M. bovis was cultured from TB-like lesions found at slaughter during the year that were not identified as TB reactor animals divided by the number of animals tuberculin tested during the year expressed as a %
g17	Confirmed TB animal prevalence in year (%)	Number of TB reactors that were confirmed during the year by the presence of visible lesions at slaughter and/or by laboratory confirmation (histopathology and/or culture) plus the number of other animals where M. bovis was cultured from TB-like lesions found at slaughter during the year that were not identified as TB reactor animals divided by the number of animals tuberculin tested during the year expressed as a %
g37	No. herds with confirmed TB in last 12 months	Herds that had at least one confirmed TB animal during the last 12 months.
g38	No. herds with confirmed TB in last 13-24 months	Herds that had at least one confirmed TB animal during the last 13-24 months.
g24	No. herds with confirmed TB in year	Herds that had at least one confirmed TB animal during the year.
g20	No. herds with confirmed TB in year	Herds that had at least one confirmed TB animal during the year.
g21	No. herds with confirmed TB in year	Herds that had at least one confirmed TB animal during the year.
g22	No. herds with confirmed TB in year	Herds that had at least one confirmed TB animal during the year.
g23	No. herds with confirmed TB in year	Herds that had at least one confirmed TB animal during the year.
g39	Confirmed TB herd prevalence in last 12 months (%)	Number of herds that had at least one confirmed TB animal during the last 12 months divided the number of herds that presented cattle at a TB herd test expressed as a %.
g40	Confirmed TB herd prevalence in last 13-24 months (%)	Number of herds that had at least one confirmed TB animal during the last 13-24 months divided the number of herds that presented cattle at a TB herd test expressed as a %.
g30	Confirmed TB herd prevalence in year (%)	Number of herds that had at least one confirmed TB animal during the year divided the number of herds that presented cattle at a TB herd test expressed as a %.
g26	Confirmed TB herd prevalence in year (%)	Number of herds that had at least one confirmed TB animal during the year divided the number of herds that presented cattle at a TB herd test expressed as a %.
g27	Confirmed TB herd prevalence in year (%)	Number of herds that had at least one confirmed TB animal during the year divided the number of herds that presented cattle at a TB herd test expressed as a %.
g28	Confirmed TB herd prevalence in year (%)	Number of herds that had at least one confirmed TB animal during the year divided the number of herds that presented cattle at a TB herd test expressed as a %.
g29	Confirmed TB herd prevalence in year (%)	Number of herds that had at least one confirmed TB animal during the year divided the number of herds that presented cattle at a TB herd test expressed as a %.