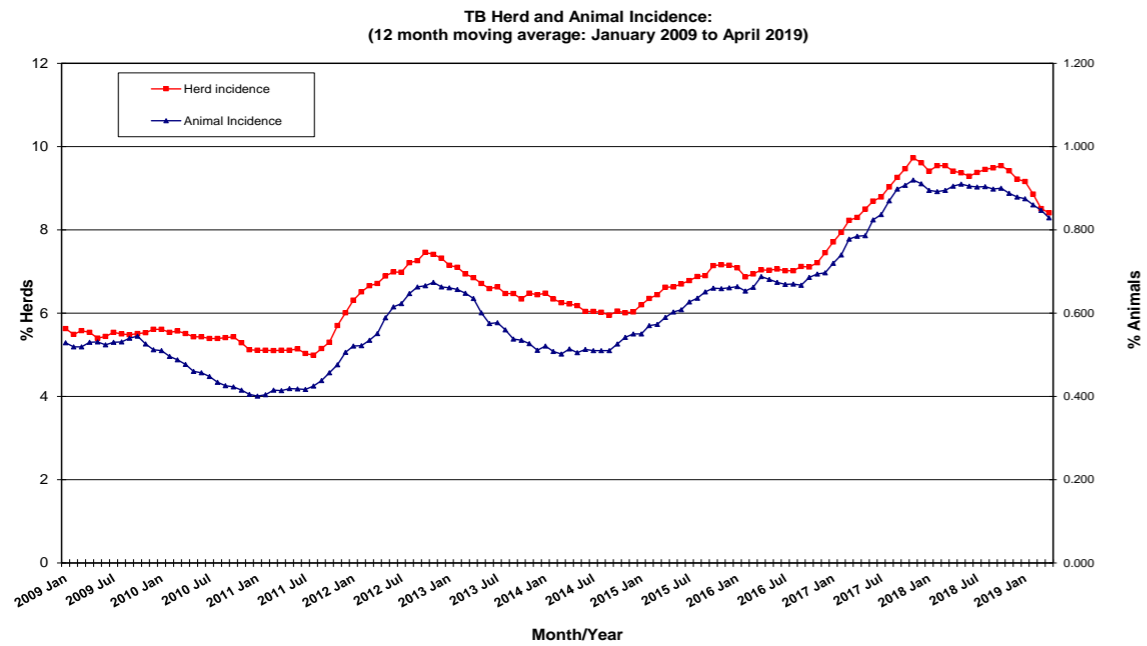
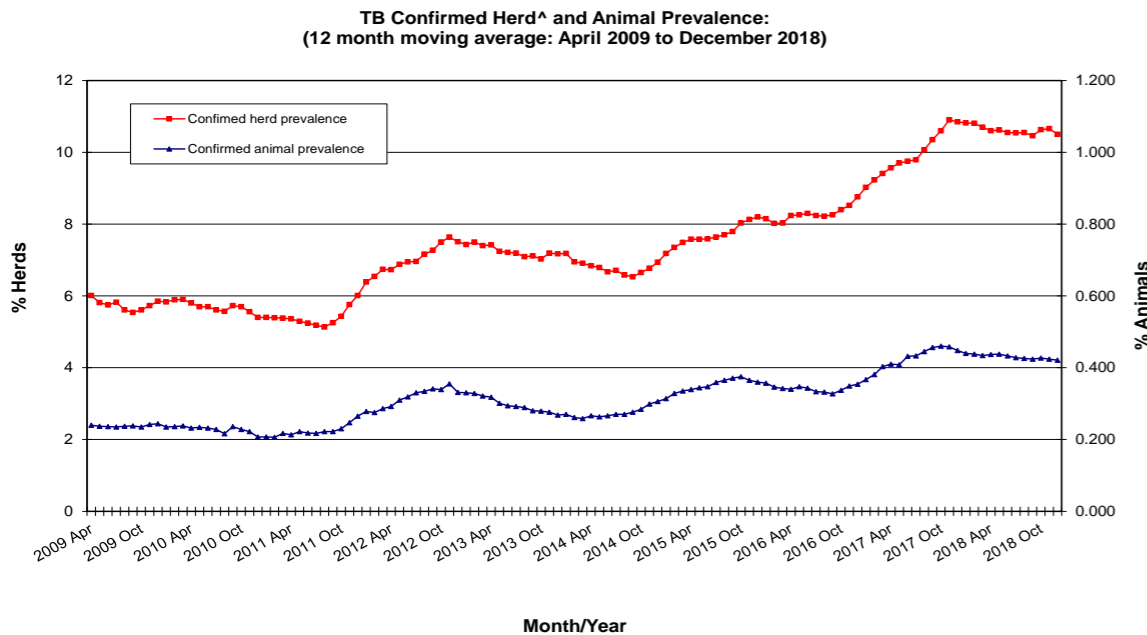


Tuberculosis: Statistics for April 2019



Disease statistics

Annual herd incidence over the last 12 months (%)	8.41	
Annual herd incidence over the last 13-24 months (%)	9.41	
2018 Herd Incidence (%)	9.22	
Annual animal incidence over the last 12 months (%)	0.828	
Annual animal incidence over the last 13-24 months (%)	0.905	
2018 Animal Incidence (%)	0.879	
Confirmed TB herd prevalence in last 12 months (%)	10.50	for Month = December 2018
Confirmed TB herd prevalence in last 13-24 months (%)	10.85	for Month = December 2018
Confirmed TB herd prevalence in 2017 (%)	10.85	for Month = December 2018
Confirmed TB animal prevalence in last 12 months (%)	0.421	for Month = December 2018
Confirmed TB animal prevalence in last 13-24 months (%)	0.448	for Month = December 2018
Confirmed TB animal prevalence in 2017 (%)	0.448	for Month = December 2018



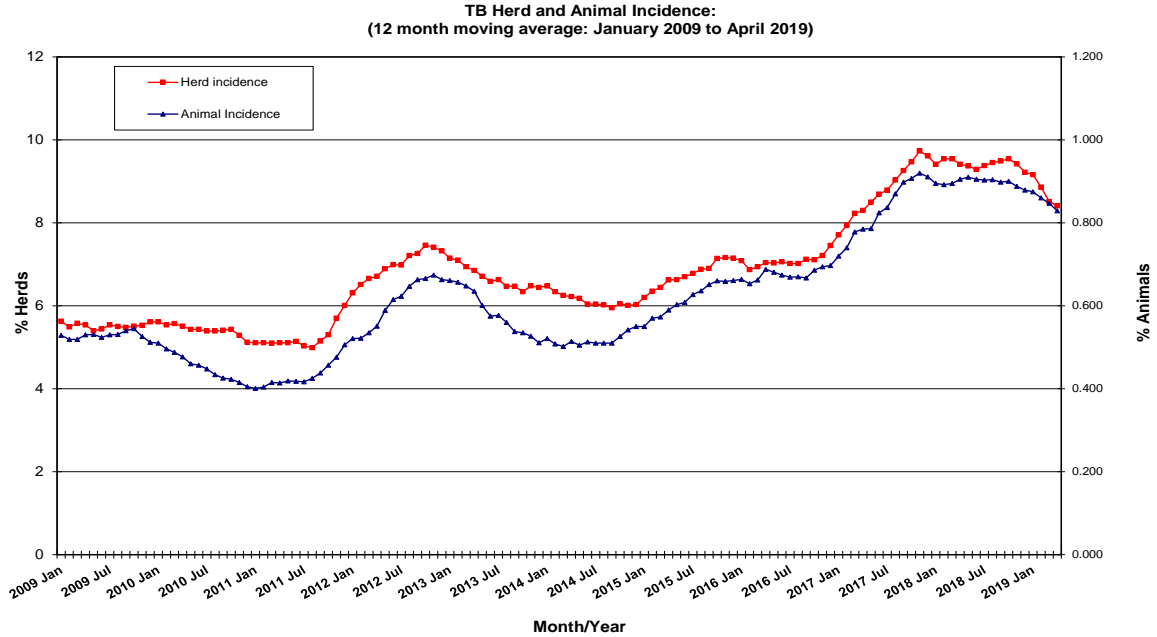
TB skin test reactors

No. of TB reactor animals during month	855
No. of TB reactor animals since start of year	4,369
No. of reactor animals in the previous 12 months	14,244
No. of reactor animals in the previous 13-24 months	15,794

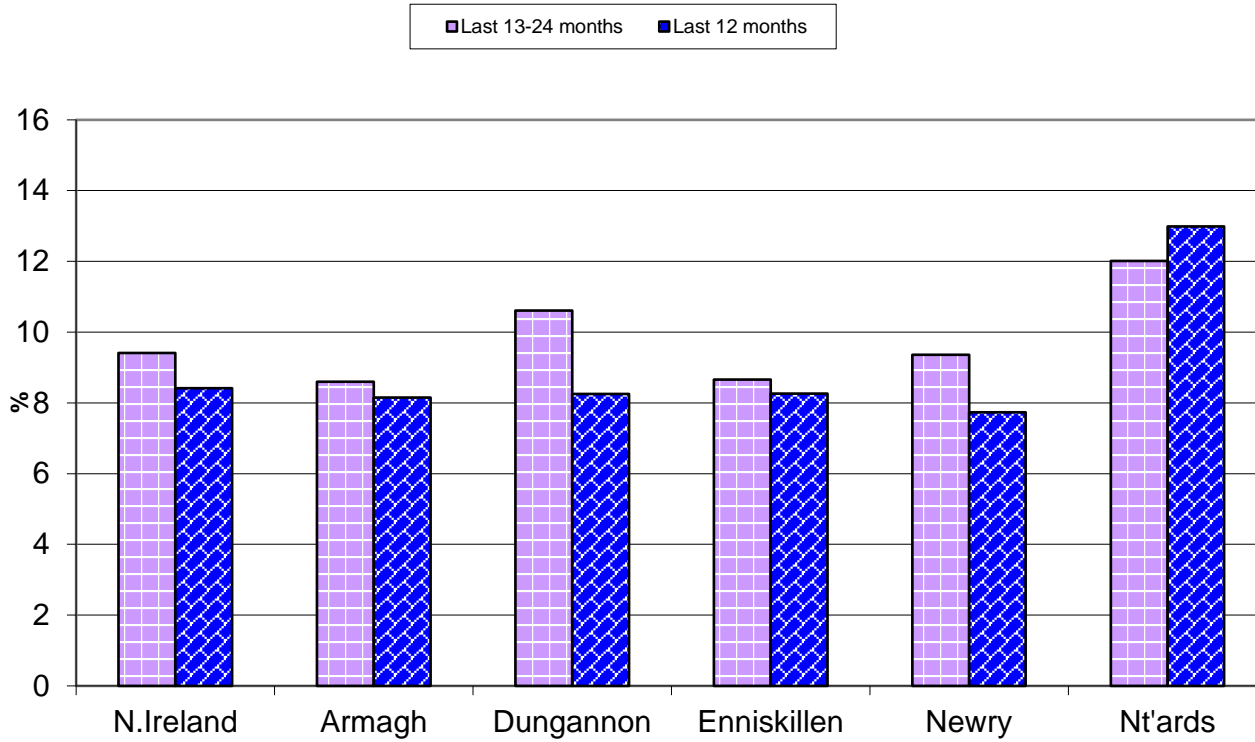
Herds & animals tested

No. herds with herd test during last 12 months	22,539
No. herds with herd test during last 13-24 months	22,803
No. herds with herd test during 2018	22,656
No. animals TB tested since start of year	1,067,301
No. animals TB tested in previous 12 months	1,720,162
No. animals TB tested in previous 13-24 months	1,745,485
No. animals TB tested in 2018	1,744,432

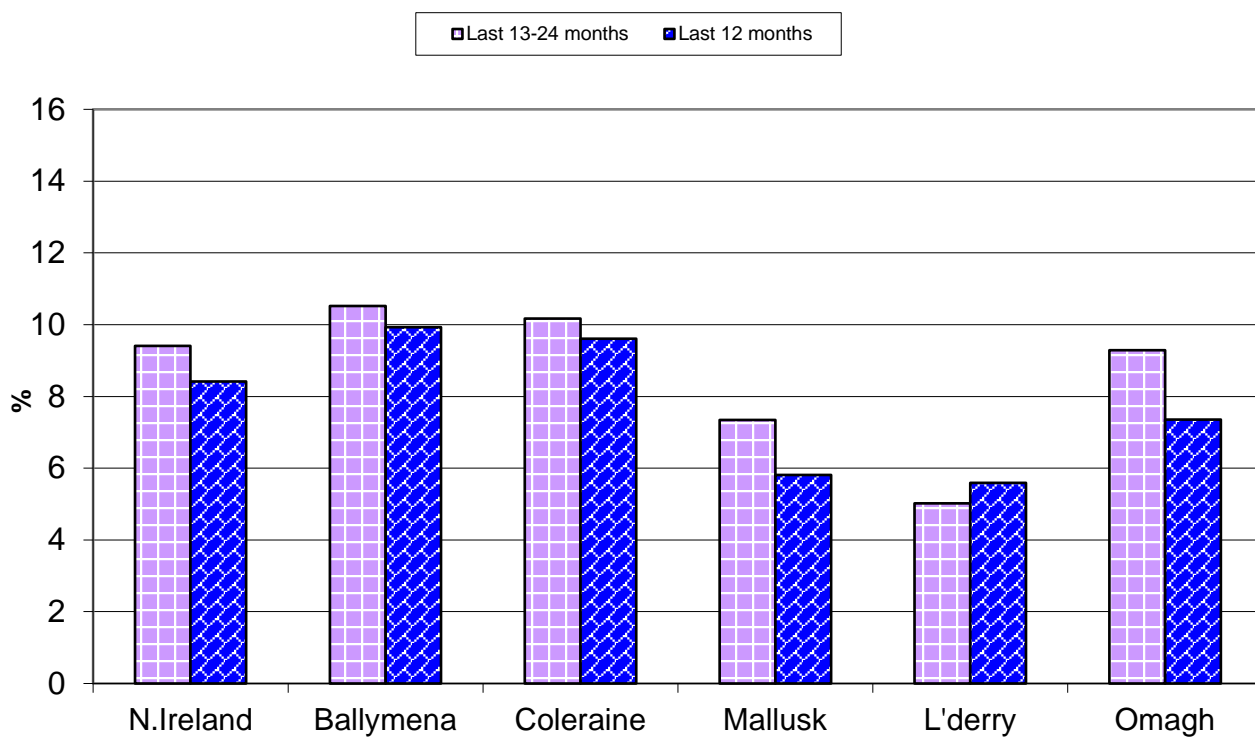
For definitions of these parameters, refer to the 'Explanatory Comments' worksheet: [Click here](#)

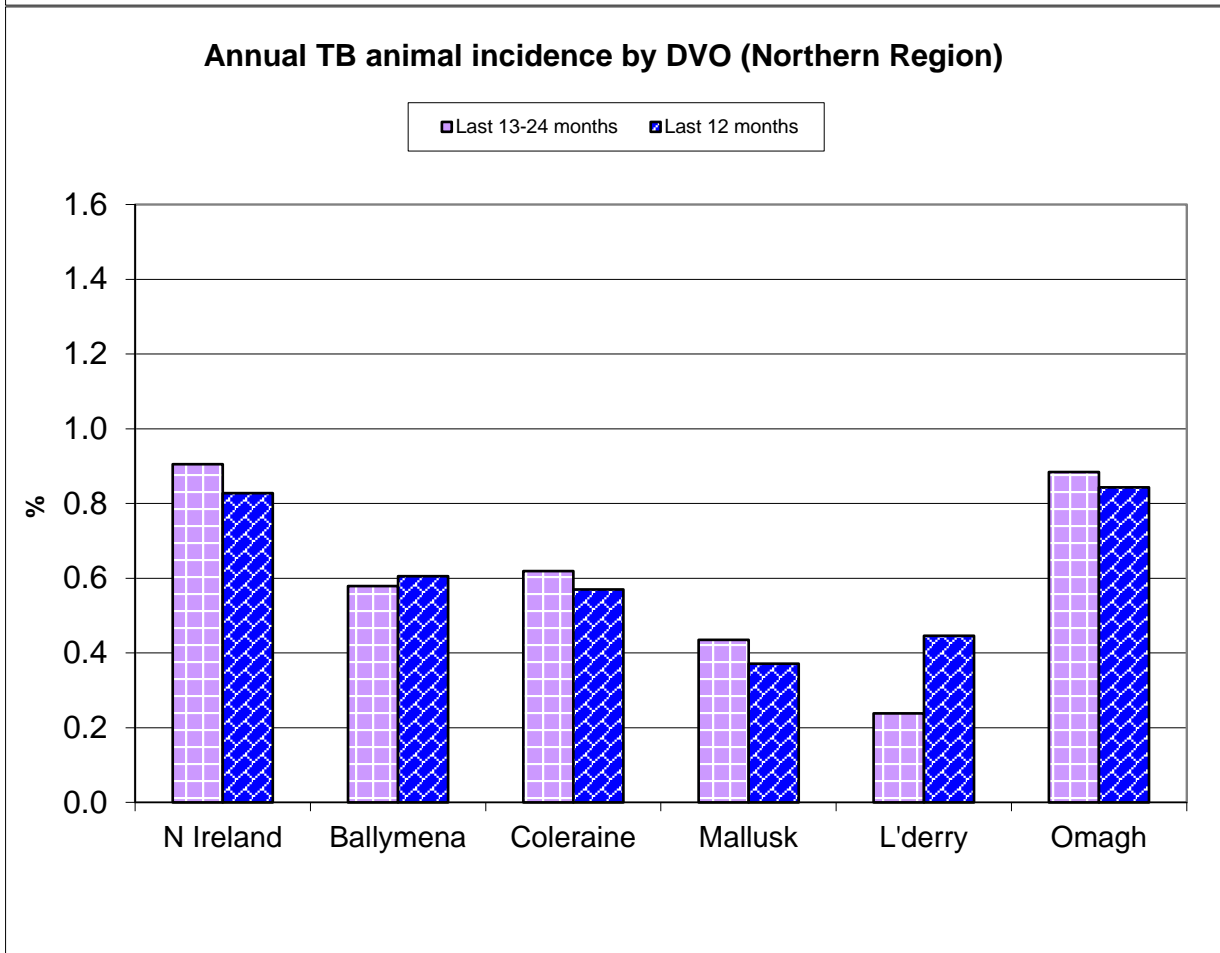
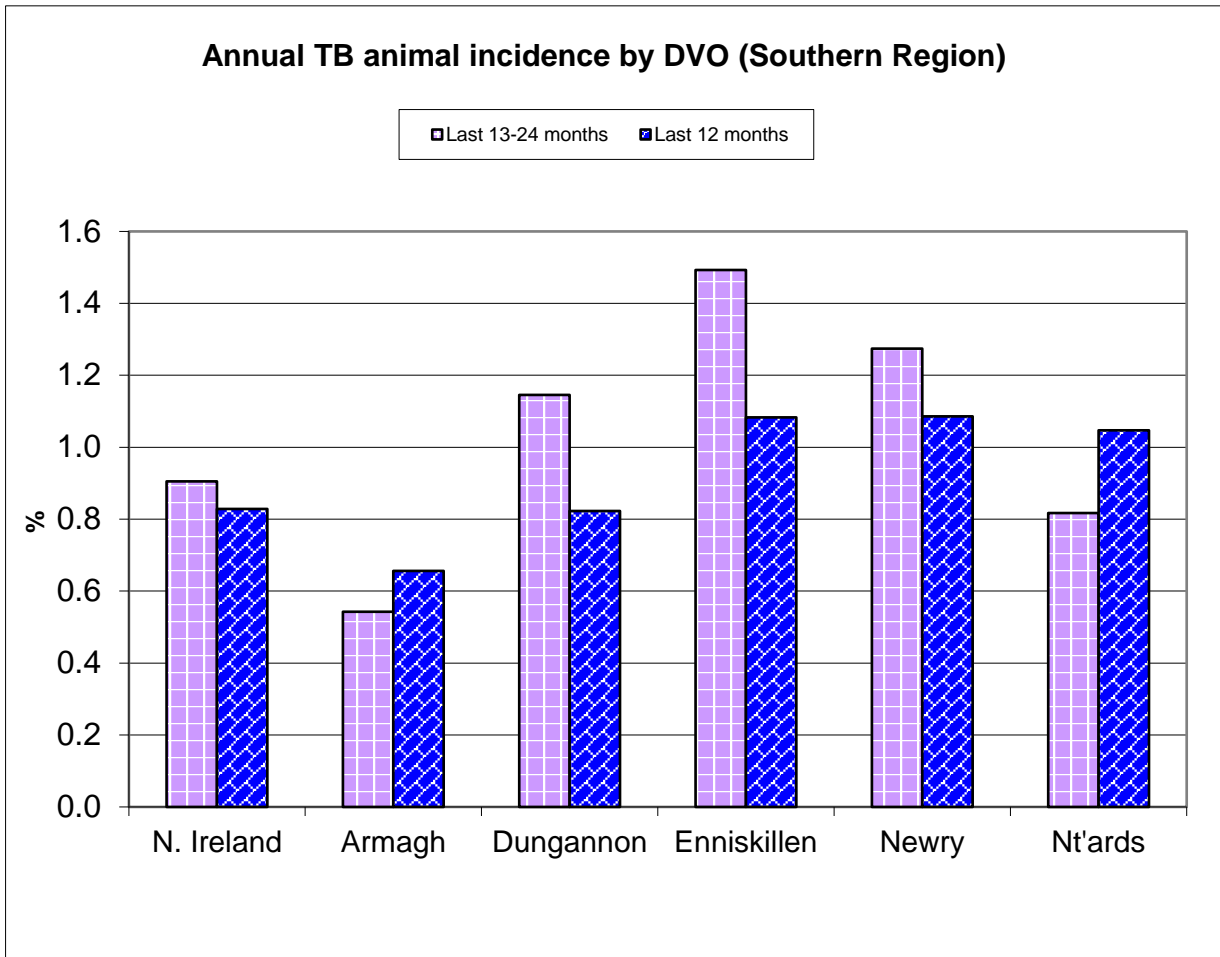


Annual TB herd incidence by DVO (Southern Region)

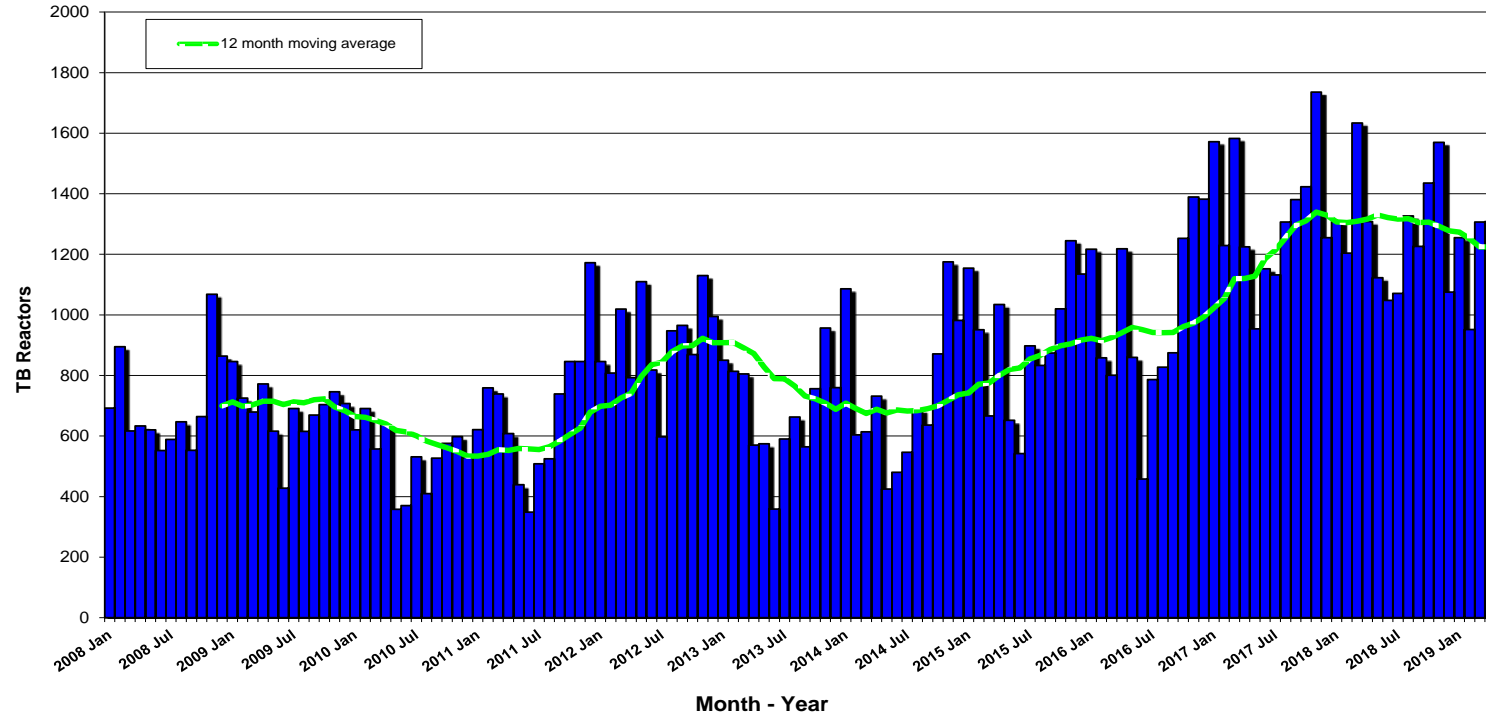


Annual TB herd incidence by DVO (Northern Region)

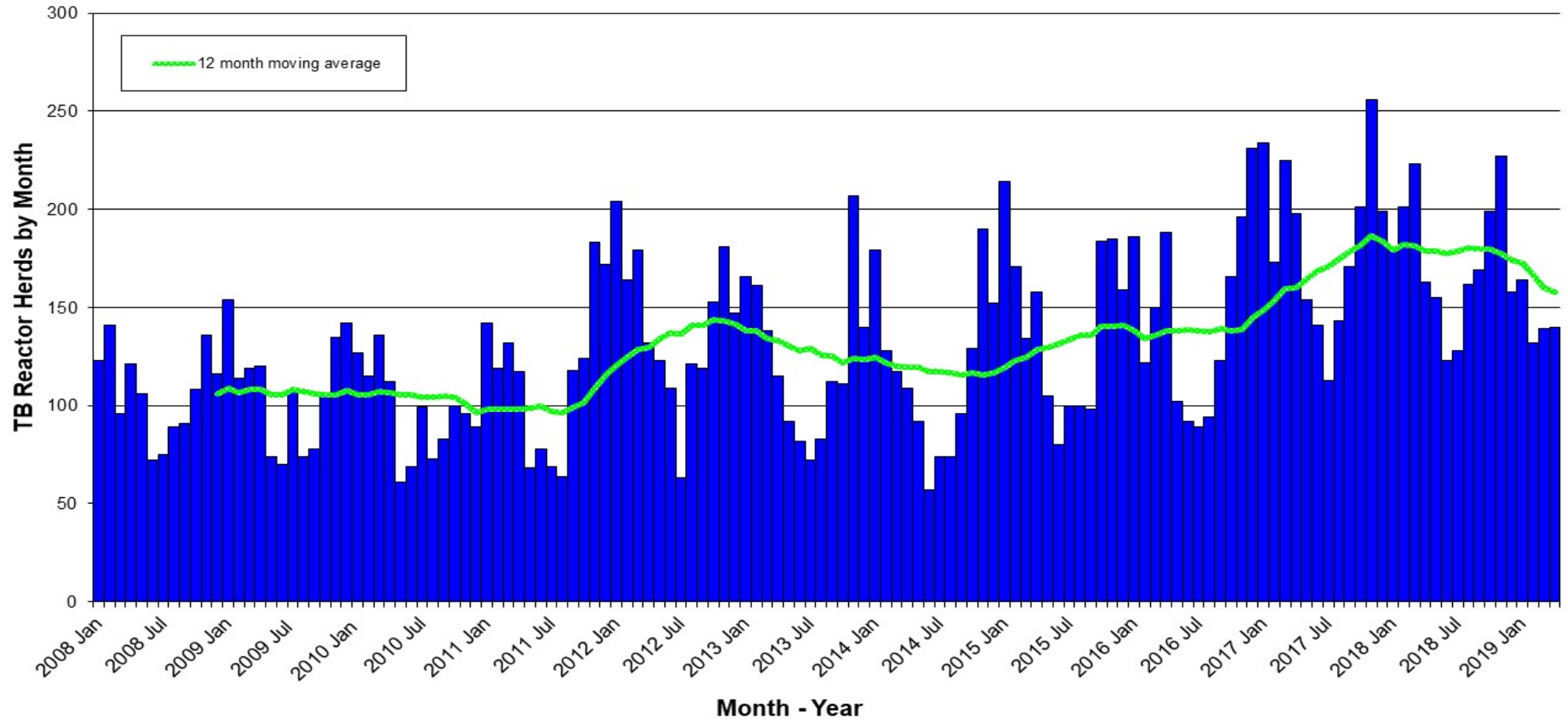


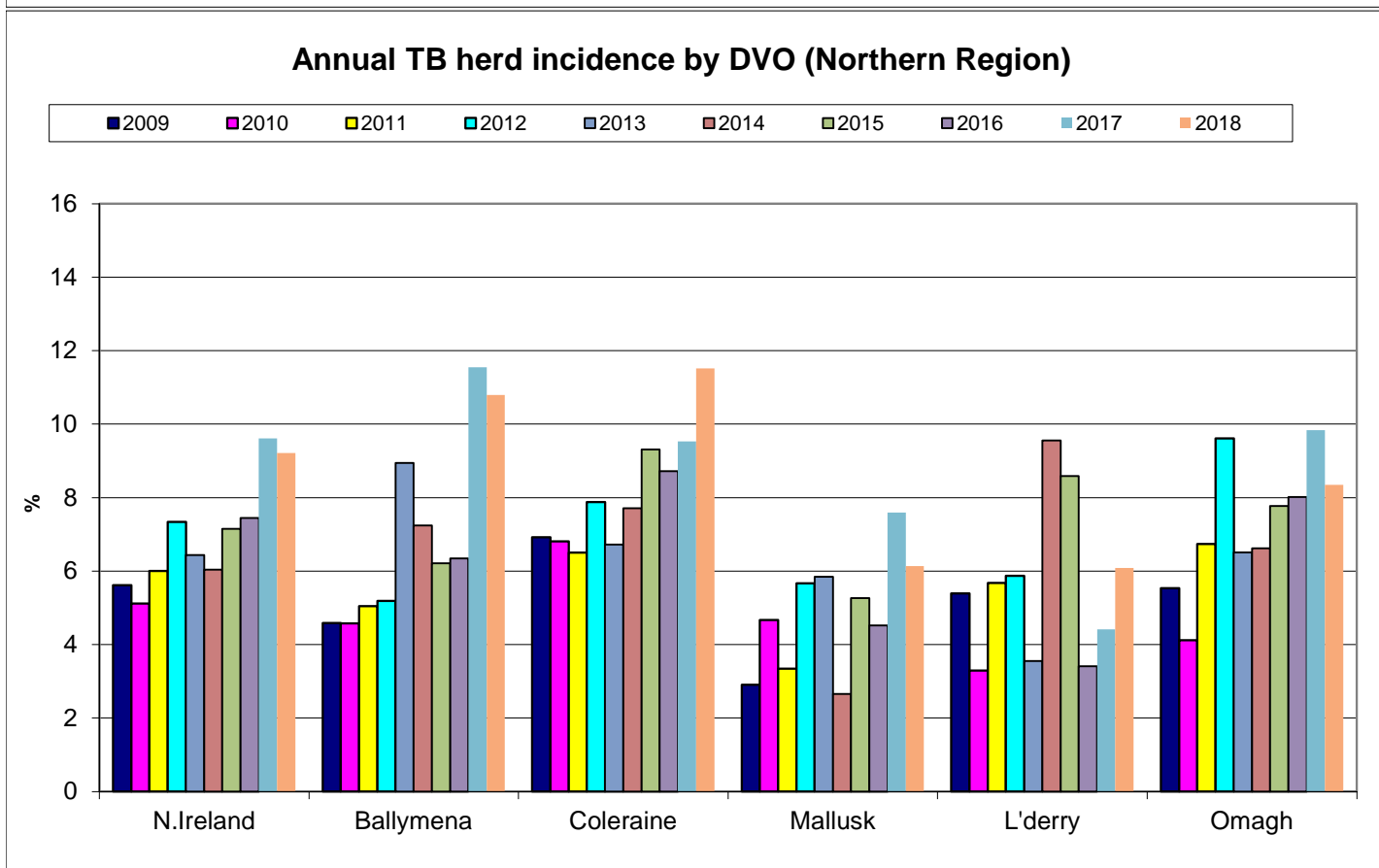
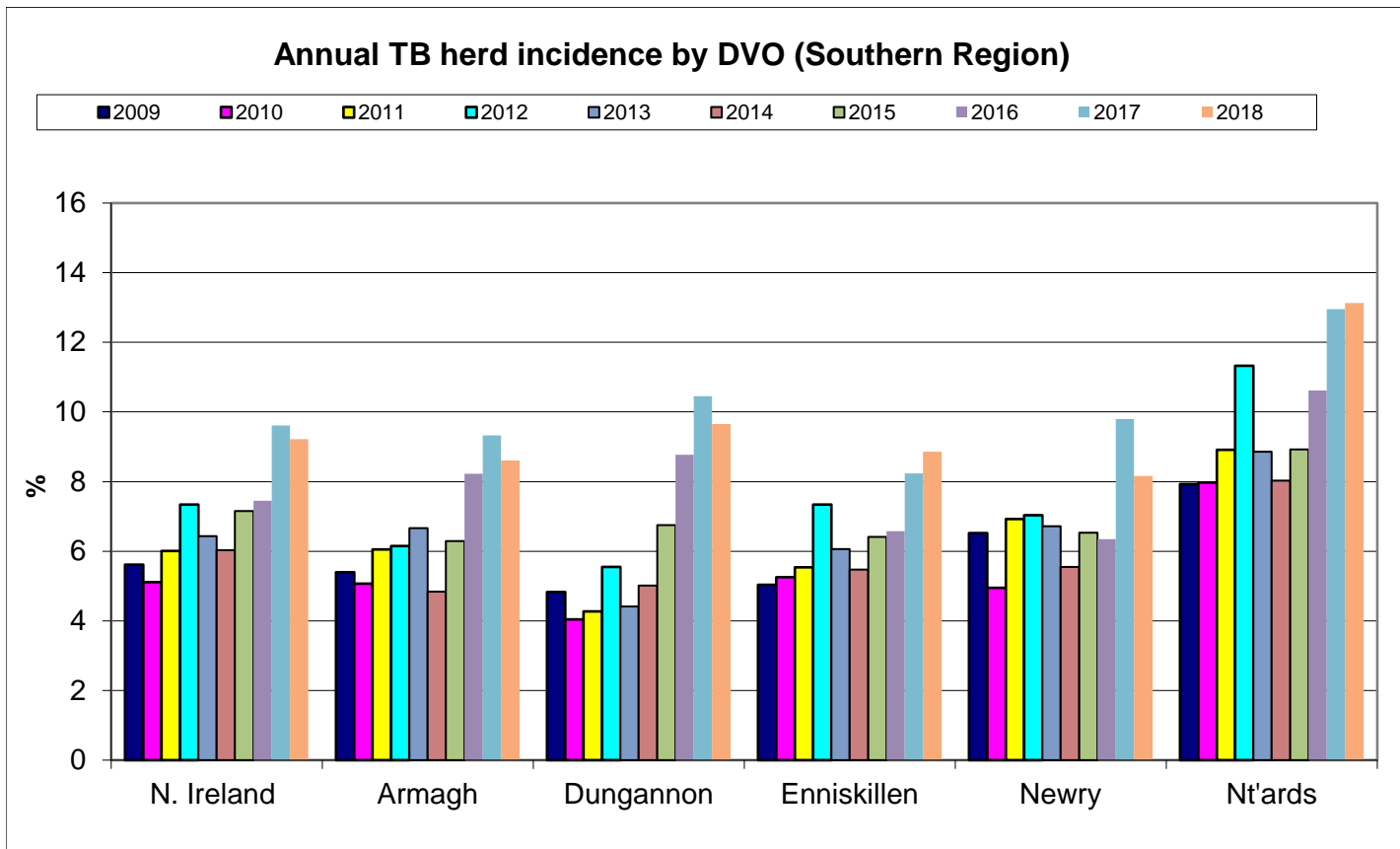


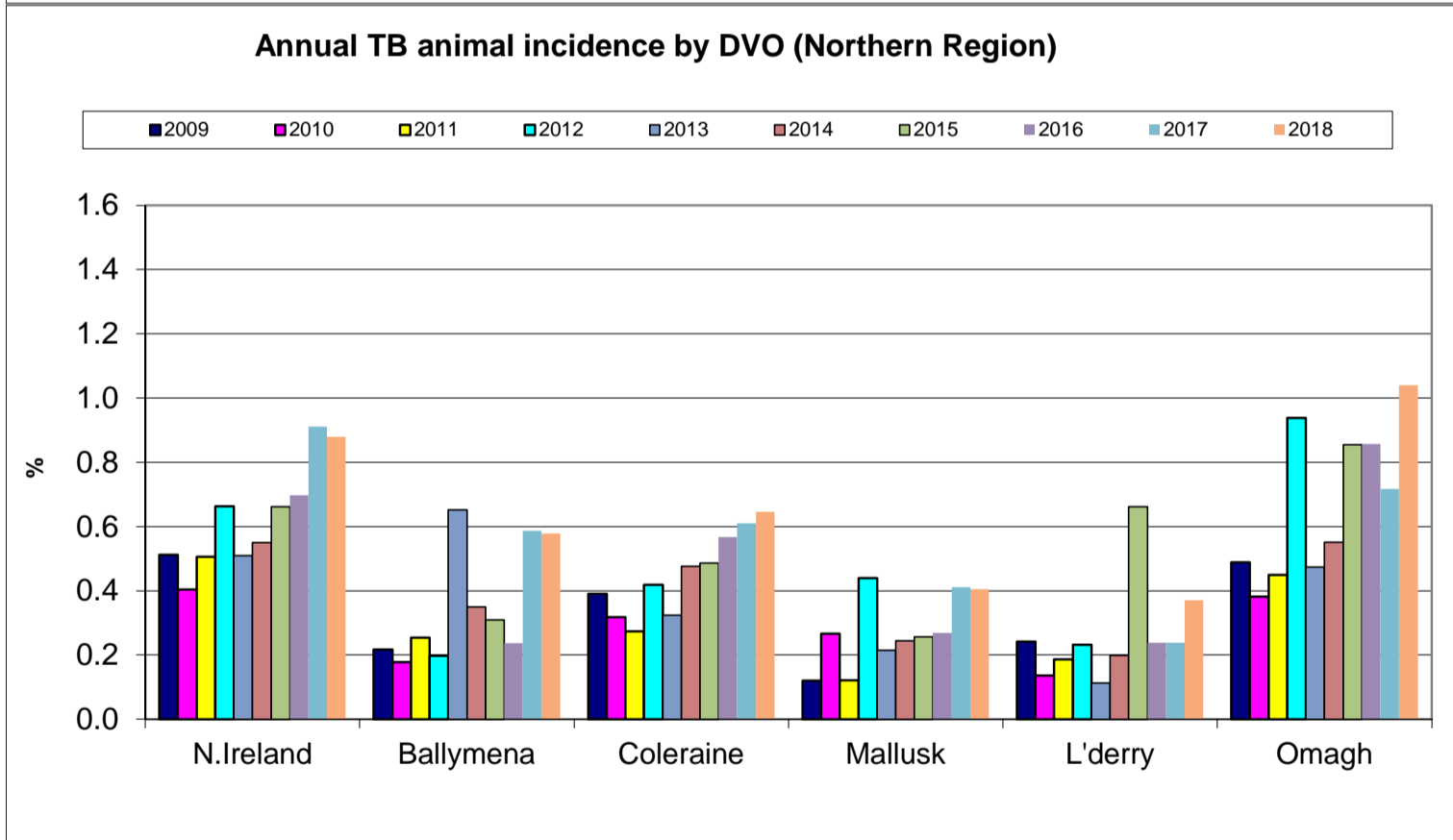
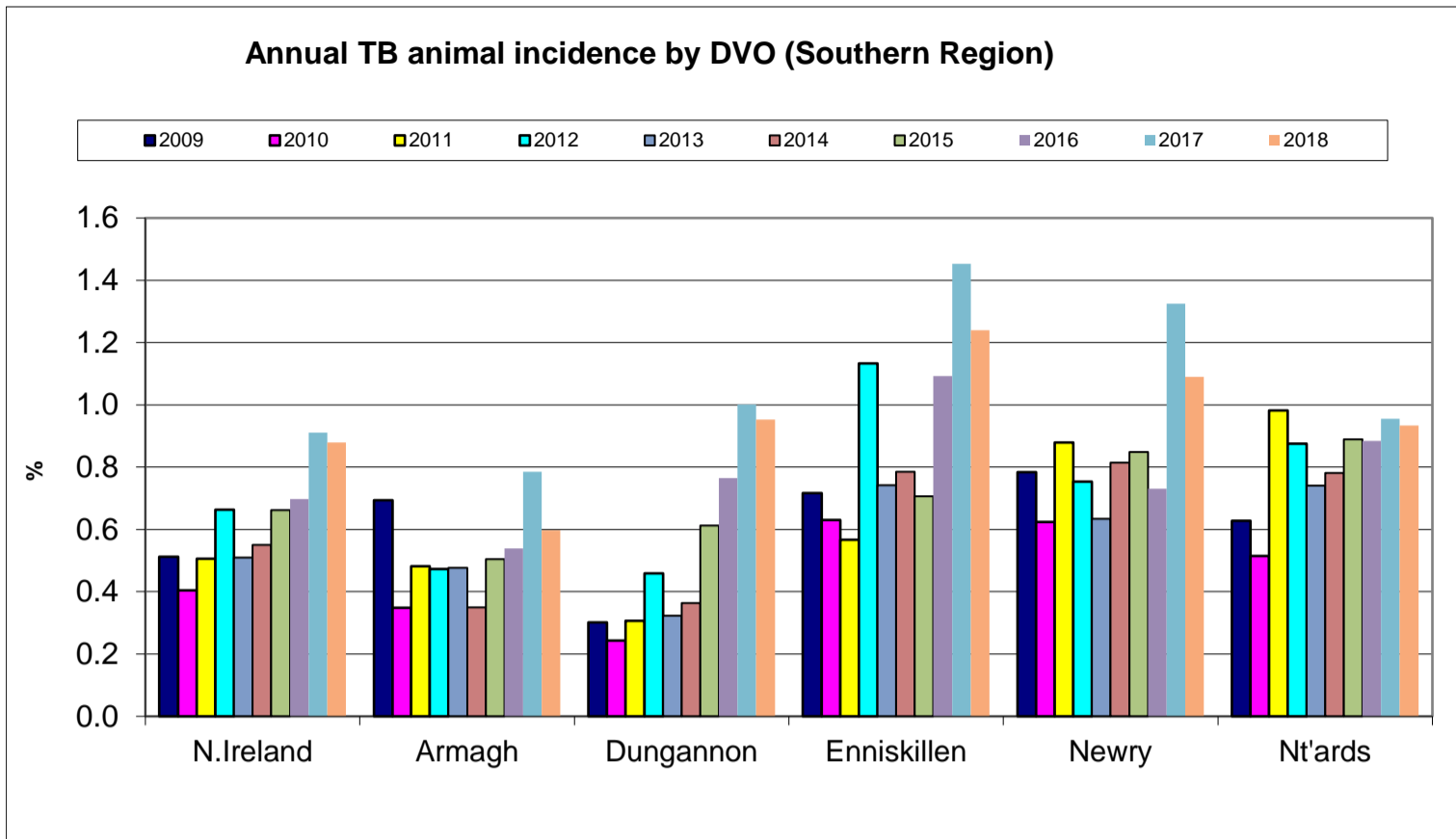
TB Reactors: January 2008 to April 2019



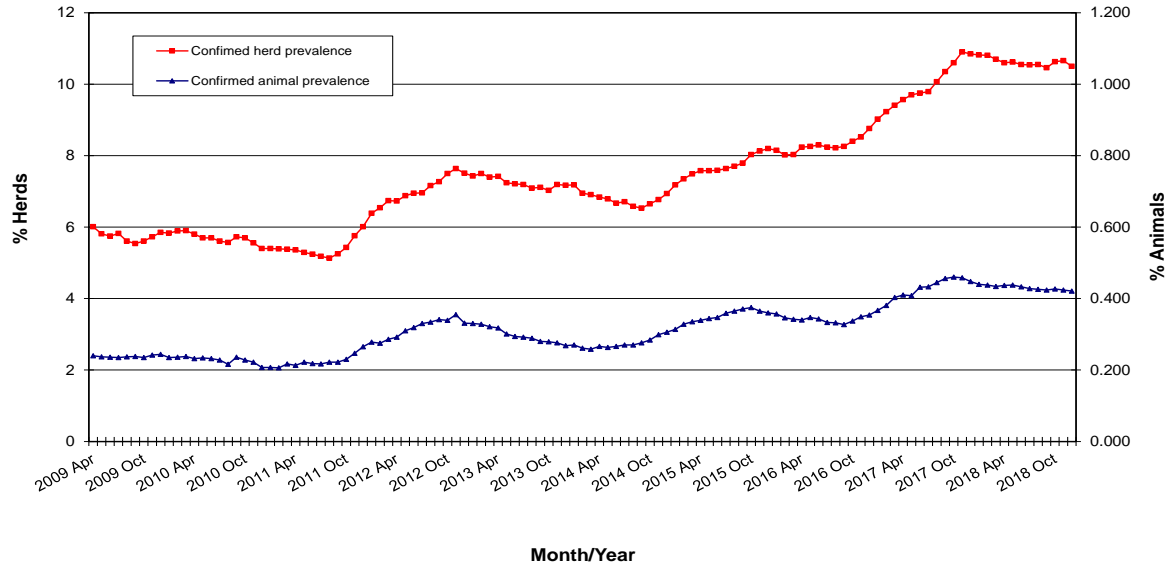
New TB Reactor Herds: January 2008 to April 2019



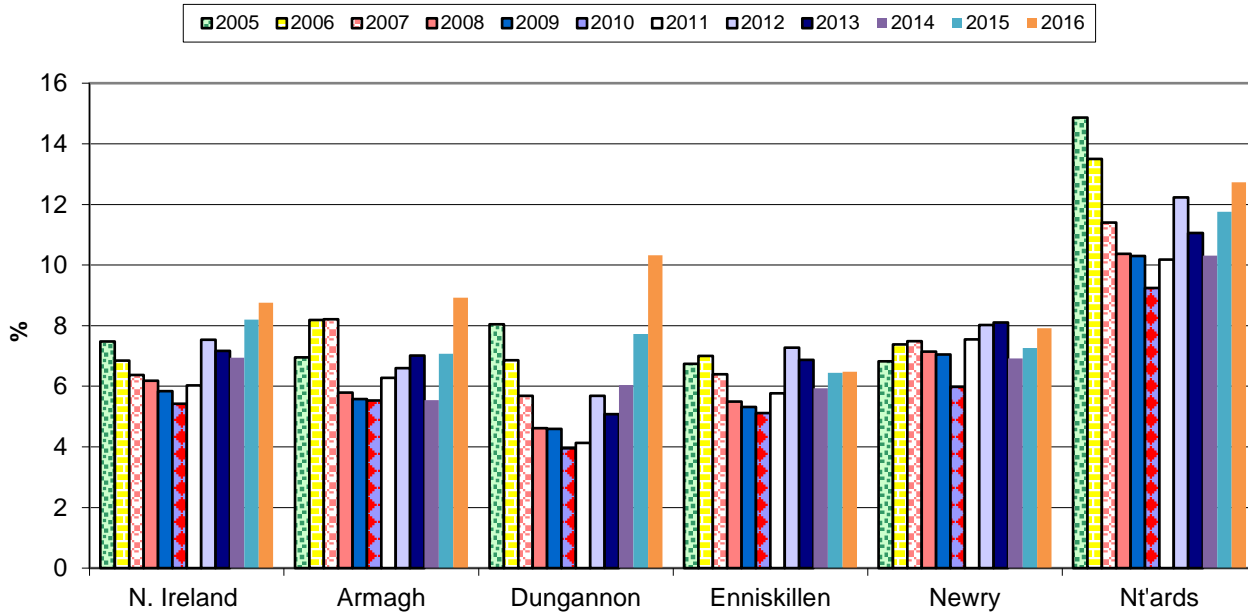




**TB Confirmed Herd^ and Animal Prevalence:
(12 month moving average: April 2009 to December 2018)**

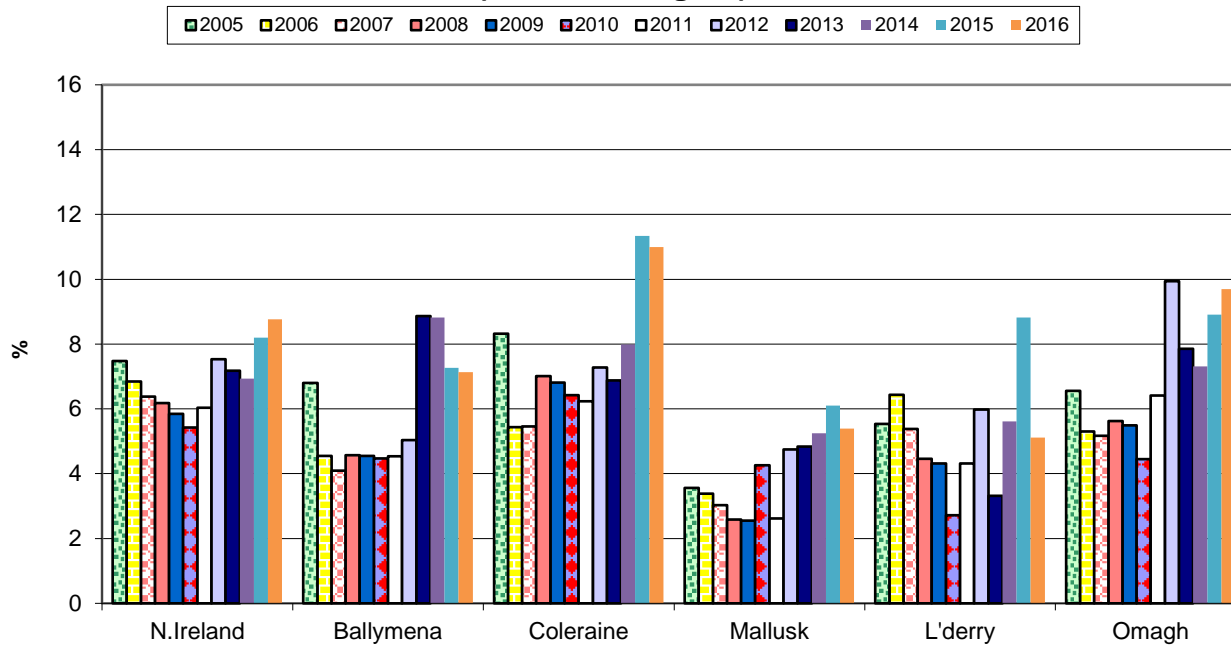


Annual confirmed TB herd prevalence by DVO (Southern Region)



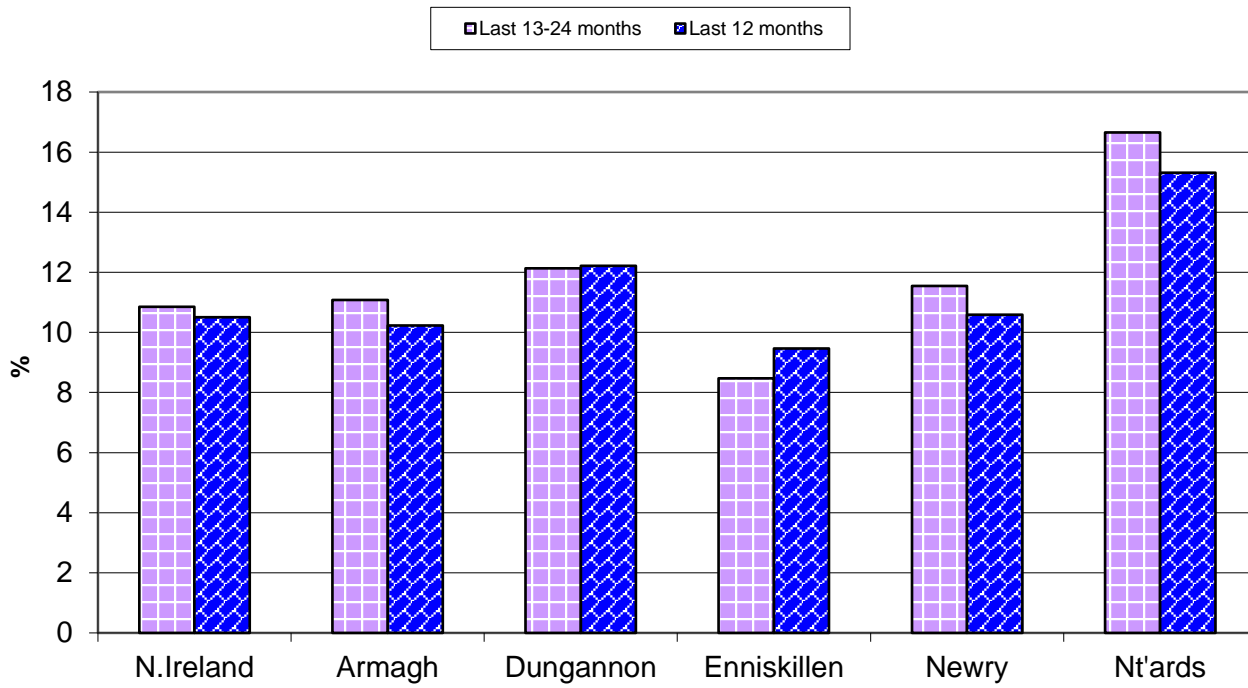
^ numerator includes all herds that had confirmed TB within the 12 month period

Annual confirmed TB herd prevalence by DVO (Northern Region)



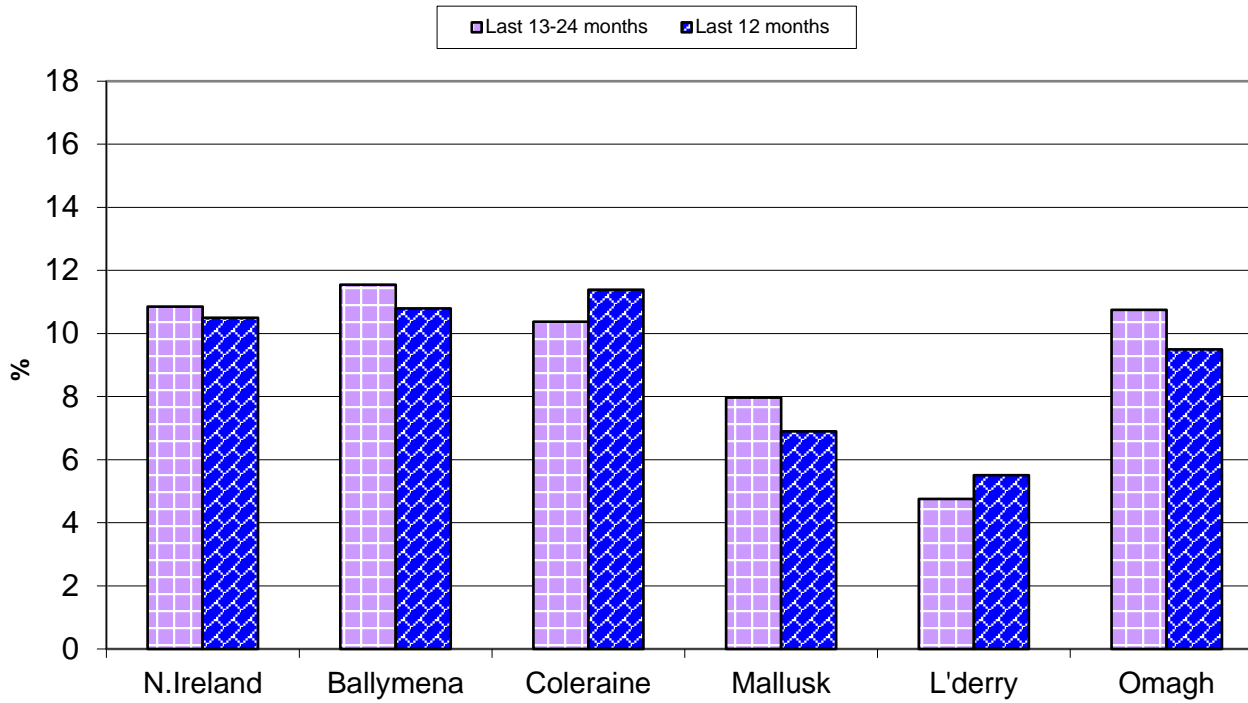
^ numerator includes all herds that had confirmed TB within the 12 month period

Annual confirmed TB herd prevalence[^] by DVO (Southern Region)



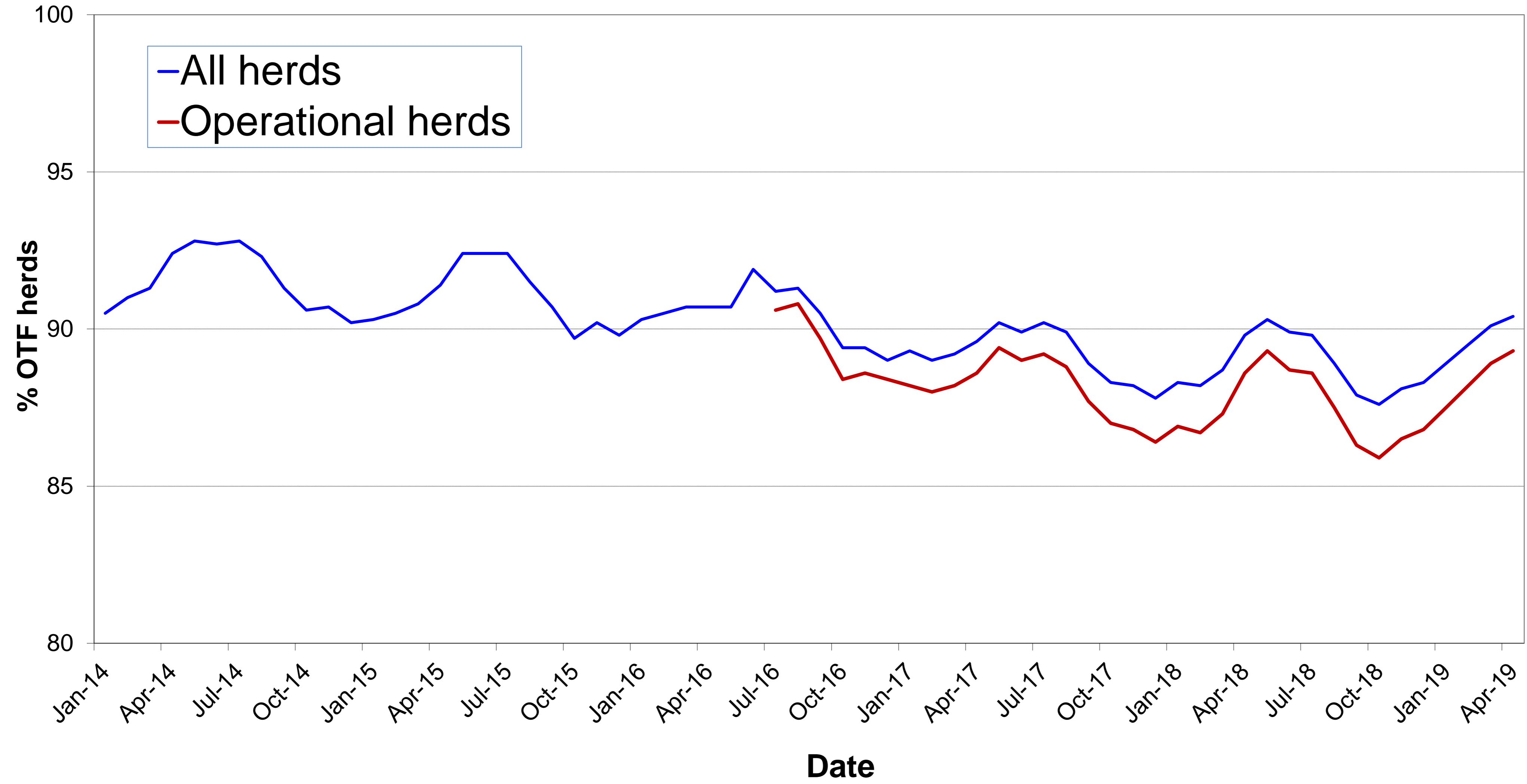
[^] numerator includes all herds that had confirmed TB within the 12 month period

Annual confirmed TB herd prevalence[^] by DVO (Northern Region)



[^] numerator includes all herds that had confirmed TB within the 12 month period

% herds that are officially tuberculosis free (OTF herds)



Month = April 2019

Ref.	Total	Armagh	Ballymena	Coleraine	Dungannon	Enniskillen	Mallusk	L'derry	Newry	Nt'ards	Omagh	
d1	No. of herds with TB reactors during month	268	24	18	37	33	30	16	8	45	37	20
d2	No. of new reactor herds during month	140	13	9	20	12	18	10	3	21	20	14
d3	No. of new reactor herds since start of year	575	56	38	64	66	76	38	12	101	73	51
d4	No. of new reactor herds in the previous 12 months	1896	182	134	237	224	243	91	48	286	241	210
d26	No. of new reactor herds in the previous 13-24 months	2145	195	143	255	294	254	117	44	346	227	270
d5	No. of TB reactor animals during month	855	76	44	96	72	121	61	38	199	89	59
d6	No. of TB reactor animals since start of year	4369	400	214	301	550	489	244	115	937	702	417
d7	No. of reactor animals in the previous 12 months	14244	1216	753	1327	1737	1811	559	292	2724	2020	1805
d27	No. of reactor animals in the previous 13-24 months	15794	1029	719	1450	2458	2552	656	157	3248	1603	1922
d20	Cumulative herd incidence in year (%)	4.35	4.23	4.54	4.27	4.15	4.58	3.99	2.81	4.52	6.23	3.33
d9	Annual herd incidence over the last 12 months (%)	8.41	8.15	9.93	9.61	8.25	8.26	5.81	5.59	7.73	12.98	7.36
d28	Annual herd incidence over the last 13-24 months (%)	9.41	8.59	10.52	10.17	10.61	8.65	7.35	5.02	9.36	12.01	9.29
d16	2018 Herd Incidence (%)	9.22	8.60	10.79	11.51	9.66	8.86	6.13	6.08	8.16	13.13	8.35
d10	2017 Herd Incidence (%)	9.61	9.33	11.55	9.53	10.45	8.24	7.59	4.41	9.80	12.96	9.83
d11	2016 Herd Incidence (%)	7.45	8.23	6.34	8.72	8.77	6.58	4.52	3.41	6.35	10.62	8.01
d38	2015 Herd Incidence (%)	7.15	6.29	6.21	9.31	6.75	6.41	5.26	8.59	6.54	8.92	7.77
d30	2014 Herd Incidence (%)	6.03	4.84	7.24	7.71	5.02	5.48	5.24	4.83	5.55	8.03	6.62
d21	Cumulative animal incidence in year (%)	0.409	0.373	0.276	0.202	0.448	0.498	0.263	0.306	0.623	0.577	0.353
d12	Annual animal incidence over the last 12 months (%)	0.828	0.656	0.606	0.570	0.823	1.083	0.371	0.446	1.085	1.047	0.843
d29	Annual animal incidence over the last 13-24 months (%)	0.905	0.542	0.579	0.619	1.146	1.493	0.435	0.238	1.274	0.817	0.885
d15	2018 Animal Incidence (%)	0.879	0.598	0.579	0.646	0.952	1.239	0.406	0.371	1.090	0.934	1.040
d13	2017 Animal Incidence (%)	0.911	0.785	0.587	0.610	1.002	1.453	0.411	0.238	1.325	0.956	0.717
d14	2016 Animal Incidence (%)	0.697	0.539	0.237	0.567	0.765	1.092	0.269	0.238	0.731	0.885	0.857
d39	2015 Animal Incidence (%)	0.661	0.504	0.310	0.486	0.612	0.707	0.256	0.661	0.848	0.889	0.855
d31	2014 Animal Incidence (%)	0.550	0.350	0.349	0.476	0.364	0.786	0.244	0.199	0.815	0.781	0.551
d34	APT during current month	2.69	2.46	2.02	2.24	1.75	4.07	2.46	3.58	4.78	2.32	1.65
d22	APT since start of year	3.56	3.32	2.38	1.77	3.97	4.35	2.40	2.68	5.53	4.90	3.03
d17	Current 12 month moving average APT	4.40	3.90	3.15	2.90	4.69	5.90	2.30	2.96	5.92	5.33	4.89

d18	2018 APT	4.67	3.57	3.02	3.27	5.29	6.95	2.55	2.50	5.88	4.84	6.12
d19	2017 APT	5.07	4.57	3.40	3.31	5.89	8.74	2.78	1.73	7.57	5.00	4.24
d42	2016 APT	4.23	3.45	1.63	3.14	4.99	7.28	1.98	1.72	4.62	5.20	5.20
d40	2015 APT	4.06	3.37	2.08	2.80	4.31	4.46	1.88	4.51	5.33	5.06	5.38
d32	2014 APT	3.55	2.39	2.18	3.24	2.78	5.24	1.79	1.58	5.08	4.64	3.65
d23	No. negative in contacts since start of year	221	43	5	21	40	48	17	4	10	15	18
d46	No. negative in contacts over last 12 months	906	74	100	85	145	96	53	10	101	158	84
d24	No. negative in contacts during 2018	999	57	103	109	151	62	40	10	165	155	147
d25	No. negative in contacts during 2017	891	92	14	189	43	83	50	1	242	74	103
d43	No. negative in contacts during 2016	579	37	11	78	24	105	8	57	17	63	179
d41	No. negative in contacts during 2015	755	59	10	23	62	37	45	9	73	95	342
d33	No. negative in contacts during 2014	1060	40	10	100	227	93	29	9	201	35	316
d35	Reactor removal time 2019	8.9	13.0	8.2	8.9	12.3	6.9	9.6	8.9	9.6	9.6	6.9
d37	Reactor removal time 2018	9.6	13.0	8.9	8.9	11.0	9.6	12.3	8.9	12.3	9.6	8.9
d47	Reactor removal time 2017	9.6	11.6	8.2	8.9	12.3	9.6	9.6	8.2	12.3	11.6	8.2
D44	Reactor removal time 2016	8.9	11.0	8.9	8.2	8.2	8.9	8.9	8.2	8.9	8.2	8.2
d36	Reactor removal time 2015	8.9	9.6	9.6	8.9	8.9	8.2	8.9	8.2	9.6	9.6	8.2
d45	Reactor removal time 2014	8.9	9.6	8.9	8.9	8.9	8.9	8.9	8.2	10.3	8.9	8.2

Tuberculosis: number of reactor herds by month and by DVO in 2019 and unique herd breakdowns during the year

2019		DVO_CODE										
Year	Month	Armagh	Ballymena	Coleraine	Dungannon	Enniskillen	L'Derry	Mallusk	Newry	Nt'Ards	Omagh	Total
2019	1	18	14	13	25	26	3	10	24	20	11	164
2019	2	11	6	20	15	16	2	10	22	14	16	132
2019	3	14	9	11	14	16	4	8	34	19	10	139
2019	4	13	9	20	12	18	3	10	21	20	14	140
2019	5											0
2019	6											0
2019	7											0
2019	8											0
2019	9											0
2019	10											0
2019	11											0
2019	12											0
Total		56	38	64	66	76	12	38	101	73	51	575

Unique Herd Breakdowns		DVO_CODE									
Year	Armagh	Ballymena	Coleraine	Dungannon	Enniskillen	L'Derry	Mallusk	Newry	Nt'Ards	Omagh	Total Herds
2019	97	70	114	133	111	24	68	183	154	102	1056

Tuberculosis: number of reactor herds by month and by DVO in 2018 and unique herd breakdowns during the year

2018		DVO_CODE										
Year	Month	Armagh	Ballymena	Coleraine	Dungannon	Enniskillen	L'Derry	Mallusk	Newry	Nt'Ards	Omagh	Total
2018	1	18	12	22	26	22	4	15	25	20	16	180
2018	2	15	7	35	27	28	9	9	31	22	18	201
2018	3	14	20	32	31	23	1	18	32	23	29	223
2018	4	18	12	24	22	22	3	1	29	13	19	163
2018	5	15	6	18	29	21	3	4	26	13	20	155
2018	6	8	9	21	12	13	4	5	17	19	15	123
2018	7	8	4	17	19	21	4	2	21	16	16	128
2018	8	22	15	23	25	19	0	5	17	20	16	162
2018	9	19	11	25	17	20	4	1	20	34	18	169
2018	10	16	17	20	21	35	4	12	27	22	25	199
2018	11	19	22	31	18	26	8	12	32	27	32	227
2018	12	19	12	18	17	12	9	12	25	17	17	158
Total		191	147	286	264	262	53	96	302	246	241	2088

Unique Herd Breakdowns		DVO_CODE									
Year	Armagh	Ballymena	Coleraine	Dungannon	Enniskillen	L'Derry	Mallusk	Newry	Nt'Ards	Omagh	Total Herds
2018	248	194	376	381	335	61	125	440	320	326	2806

Tuberculosis: number of reactor herds by month and by DVO in 2017 and unique herd breakdowns during the year

2017		DVO_CODE										
Year	Month	Armagh	Ballymena	Coleraine	Dungannon	Enniskillen	L'Derry	Mallusk	Newry	Nt'Ards	Omagh	Total
2017	1	31	22	24	32	20	7	9	38	22	29	234
2017	2	15	16	19	19	22	2	11	33	20	16	173
2017	3	19	15	27	30	21	1	17	38	28	29	225
2017	4	19	13	27	23	24	2	9	27	26	28	198
2017	5	11	8	24	15	17	2	7	34	16	20	154
2017	6	9	8	18	25	16	1	4	20	24	16	141
2017	7	11	7	9	9	8	3	4	29	15	18	113
2017	8	21	16	5	23	20	1	5	24	20	8	143
2017	9	22	12	20	18	30	3	6	24	15	21	171
2017	10	16	18	17	20	26	4	15	27	26	32	201
2017	11	21	9	31	42	22	9	16	47	17	42	256
2017	12	19	14	18	36	20	4	17	24	16	31	199
Total		214	158	239	292	246	39	120	365	245	290	2208

Unique Herd Breakdowns		DVO_CODE									
Year	Armagh	Ballymena	Coleraine	Dungannon	Enniskillen	L'Derry	Mallusk	Newry	Nt'Ards	Omagh	Total Herds
2017	286	179	317	391	302	46	136	487	336	369	2849

A herd is defined as being a TB reactor herd if it had at least one TB reactor animal in that month and no TB reactor animals during the previous 12 months.

A TB unique herd breakdown is defined as a herd which has had at least one TB reactor during the specified calendar year irrespective of any TB reactors during the previous calendar year.

Tuberculosis: number of reactor animals by month and by DVO 2019

2019		DVO_CODE										
Year	Month	Armagh	Ballymena	Coleraine	Dungannon	Enniskillen	L'Derry	Mallusk	Newry	Nt'Ards	Omagh	Total
2019	1	96	70	71	262	197	24	48	238	123	126	1255
2019	2	120	53	83	73	97	32	64	180	151	99	952
2019	3	108	47	51	143	74	21	71	320	339	133	1307
2019	4	76	44	96	72	121	38	61	199	89	59	855
2019	5											0
2019	6											0
2019	7											0
2019	8											0
2019	9											0
2019	10											0
2019	11											0
2019	12											0
Total		400	214	301	550	489	115	244	937	702	417	4369

Tuberculosis: number of reactor animals by month and by DVO 2018

2018		DVO_CODE										
Year	Month	Armagh	Ballymena	Coleraine	Dungannon	Enniskillen	L'Derry	Mallusk	Newry	Nt'Ards	Omagh	Total
2018	1	71	37	96	199	178	20	88	233	180	206	1308
2018	2	40	69	121	186	262	24	71	159	123	149	1204
2018	3	81	69	122	308	199	15	90	307	116	327	1634
2018	4	117	22	166	165	186	12	48	305	101	186	1308
2018	5	64	34	99	175	159	14	17	258	81	222	1123
2018	6	54	150	101	142	117	12	24	186	146	116	1048
2018	7	95	20	120	140	141	29	2	207	189	128	1071
2018	8	121	41	136	164	157	25	19	228	213	223	1327
2018	9	113	45	101	110	229	10	41	242	179	156	1226
2018	10	144	59	173	153	256	22	91	204	138	195	1435
2018	11	94	130	200	110	149	39	80	271	272	225	1570
2018	12	131	60	96	193	114	26	41	191	100	123	1075
Total		1125	736	1531	2045	2147	248	612	2791	1838	2256	15329

Tuberculosis: number of reactor animals by month and by DVO 2017

2017		DVO_CODE										
Year	Month	Armagh	Ballymena	Coleraine	Dungannon	Enniskillen	L'Derry	Mallusk	Newry	Nt'Ards	Omagh	Total
2017	1	266	73	113	145	219	34	23	323	241	135	1572
2017	2	82	59	129	109	200	3	47	298	180	122	1229
2017	3	238	52	150	154	193	30	156	285	179	146	1583
2017	4	193	33	102	154	191	6	42	203	169	132	1225
2017	5	54	81	133	100	121	2	28	254	92	89	954
2017	6	34	26	211	146	184	4	15	272	167	93	1152
2017	7	111	34	91	88	232	12	54	233	169	108	1132
2017	8	45	145	67	220	279	2	42	236	187	84	1307
2017	9	152	55	144	161	219	14	37	306	125	168	1381
2017	10	122	52	99	200	304	8	36	346	123	133	1423
2017	11	94	65	102	449	216	30	73	322	158	227	1736
2017	12	108	64	98	236	172	14	74	275	62	152	1255
Total		1499	739	1439	2162	2530	159	627	3353	1852	1589	15949

A TB reactor animal is defined as an animal where the manual interpretation field for a skin test is positive ('P') with the first test date being taken as the time at which the animal became a reactor. Animals with lesions at routine slaughter ('LRS') are not taken into account.

Month = April 2019

Ref.		Total	Armagh	Ballymena	Coleraine	Dungannon	Enniskillen	Mallusk	L'derry	Newry	Nt'ards	Omagh
b16	No. herds with any test completed in month	3691	392	225	412	480	468	280	112	576	287	459
b17	No. herds with any test, from start of year	13825	1415	864	1567	1684	1727	1000	451	2311	1198	1608
b29	All herds with any test, from start of year	14282	1436	900	1626	1754	1766	1023	476	2387	1257	1657
b18	No. herds with any test, from start of year (no cattle)	457	21	36	59	70	39	23	25	76	59	49
b19	No. herds with herd test completed in month	3438	349	202	372	448	446	264	103	543	273	438
b20	No. herds with herd test, from start of year	13227	1323	837	1498	1592	1661	953	427	2234	1172	1530
b30	All herds with herd test, from start of year	13684	1344	873	1557	1661	1700	977	452	2309	1231	1580
b21	No. herds with herd test, from start of year (no cattle)	457	21	36	59	69	39	24	25	75	59	50
b22	No. herds with herd test during last 12 months	22539	2233	1350	2466	2716	2941	1565	858	3699	1856	2855
b31	No. herds with herd test during last 13-24 months	22803	2269	1359	2508	2771	2935	1592	876	3697	1890	2906
b28	No. herds with herd test during 2018	22656	2220	1362	2484	2733	2957	1566	871	3703	1874	2886
b23	No. herds with herd test during 2017	22978	2293	1368	2507	2794	2986	1581	884	3725	1891	2949
b24	No. herds with herd test during 2016	23345	2297	1387	2557	2840	3057	1615	881	3750	1940	3021
b39	No. herds with herd test during 2015	23604	2304	1417	2610	2875	3121	1654	873	3748	1939	3063
b32	No. herds with herd test during 2014	23149	2274	1395	2490	2829	3049	1621	890	3658	1892	3051
b25	No. herds with any risk test completed	7087	716	520	870	855	893	502	166	1225	631	709
b26	No. herds with herd risk test completed	5485	463	443	697	616	777	360	118	967	506	538
b27	No. herds with restricted herd test completed	2476	267	166	277	317	274	140	61	417	303	254

Month = April 2019

Ref	Total	Armagh	Ballymena	Coleraine	Dungannon	Enniskillen	Mallusk	L'derry	Newry	Nt'ards	Omagh	
c1	Total number of tests in current month	4193	474	255	472	559	495	312	127	670	335	494
c2	Total number of tests from start of year	18098	1969	1147	2069	2237	2068	1363	580	3053	1592	2020
c3	No. tests during the same time period in the previous year	19135	2053	1161	2205	2592	2119	1412	602	3077	1739	2175
c4	% change between years	-5.7	-4.3	-1.2	-6.6	-15.9	-2.5	-3.6	-3.8	-0.8	-9.2	-7.7
c5	No. tests in the previous 12 months	49231	5196	3215	5596	6274	5821	3339	1516	8191	4358	5725
c6	No. animal tests in current month	317758	30887	21834	42848	41199	29749	24833	10628	41670	38286	35824
c7	No. animal tests from start of year	1226592	120598	89987	170523	138370	112435	101686	42857	169342	143136	137658
c8	No. animal tests during the same time period in the previous year	1273852	124029	93977	181227	154501	114521	98453	43354	183148	143861	136781
c9	% change between years	-3.9	-2.8	-4.4	-6.3	-11.7	-1.9	3.2	-1.2	-8.2	-0.5	0.6
c10	No. animal tests in previous 12 months	3237485	312094	239360	457739	370462	306846	243210	98642	460488	379278	369366
c11	No. cattle herds eligible for TB testing	25210	2521	1501	2757	3031	3217	1776	986	4068	2131	3222
c12	No. cattle eligible for TB testing	1595962	162218	110232	207295	179545	155983	135961	61759	216359	169877	196733
c13	No. restricted herd tests during month	742	78	51	75	108	75	45	22	127	85	76
c14	No. animals tested	126089	12560	8730	17042	18800	10040	8038	3920	16829	18286	11844
c15	No. herd tests during month	3438	349	202	372	448	446	264	103	543	273	438
c16	No. animals tested	315559	30468	21740	42552	40954	29486	24708	10580	41175	38165	35731
c17	No. individual tests during month	755	125	53	100	111	49	48	24	127	62	56
c18	No. animals tested	2199	419	94	296	245	263	125	48	495	121	93
c23	No. animals TB tested since start of year	1067301	107101	77633	149001	122631	98119	92693	37570	150429	121618	117967
c19	No. animals TB tested in previous 12 months	1720162	185350	124323	232961	211111	167270	150654	65415	250960	192907	214115
c24	No. animals TB tested in previous 13-24 months	1745485	189716	124169	234140	214506	170956	150648	65838	254904	196105	217294
c22	No. animals TB tested in 2018	1744432	188181	127178	237125	214744	173248	150915	66810	256145	196845	216977
c20	No. animals TB tested in 2017	1750170	190842	125843	235774	215867	174063	152684	66667	253109	193787	221579
c21	No. animals TB tested in 2016	1709508	184410	120059	232831	209246	170575	148773	67744	243436	184600	219947
c26	No. animals TB tested in 2015	1662355	173129	118652	230608	200883	169615	144926	67583	230622	180647	213478
c25	No. animals TB tested in 2014	1607660	166774	117083	214490	191534	163019	143992	61765	225643	177960	207187

Month = April 2019

Ref		Total	Armagh	Ballymena	Coleraine	Dungannon	Enniskillen	Mallusk	L'derry	Newry	Nt'ards	Omagh
	<i>All Herds</i>											
f1	No. of Officially Tuberculosis Free Herds (OTF)	27134	2715	1620	3080	3280	3369	2011	1181	4328	2014	3536
f2	No. of Officially Tuberculosis Suspended Herds (OTS)	1001	115	53	87	111	81	111	23	172	115	133
f3	No. of Officially Tuberculosis Withdrawn Herds (OTW)	1888	222	94	186	209	159	145	46	369	275	183
f4	% herds that are OTF	90.4	89.0	91.7	91.9	91.1	93.3	88.7	94.5	88.9	83.8	91.8
f5	% herds that are OTS	3.3	3.8	3.0	2.6	3.1	2.2	4.9	1.8	3.5	4.8	3.5
f6	% herds that are OTW	6.3	7.3	5.3	5.5	5.8	4.4	6.4	3.7	7.6	11.4	4.8
	<i>Operational Herds</i>											
	No. of Officially Tuberculosis Free Herds (OTF)	21646	2146	1299	2402	2630	2845	1489	884	3488	1666	2797
	No. of Officially Tuberculosis Suspended Herds (OTS)	810	79	52	83	87	65	78	21	138	95	112
	No. of Officially Tuberculosis Withdrawn Herds (OTW)	1788	204	94	183	199	155	128	43	352	264	166
	% herds that are OTF	89.3	88.3	89.9	90.0	90.2	92.8	87.8	93.2	87.7	82.3	91.0
	% herds that are OTS	3.3	3.3	3.6	3.1	3.0	2.1	4.6	2.2	3.5	4.7	3.6
	% herds that are OTW	7.4	8.4	6.5	6.9	6.8	5.1	7.6	4.5	8.8	13.0	5.4

		Month = December 2018										
		(Data lagged by 4 months)										
Ref		Total	Armagh	Ballymena	Coleraine	Dungannon	Enniskillen	Mallusk	L'derry	Newry	Nt'ards	Omagh
e19	Num. TB culture positive animals that were not TB reactors in last 12 months	866	114	40	63	120	34	43	9	231	136	76
e20	Num. TB culture positive animals that were not TB reactors in last 13-24 months	782	91	41	83	113	40	51	8	168	128	59
e3	Num. TB culture positive animals that were not TB reactors in 2017	782	91	41	83	113	40	51	8	168	128	59
e4	Num. TB culture positive animals that were not TB reactors in 2016	714	64	35	89	101	36	34	13	173	104	65
e5	Num. TB culture positive animals that were not TB reactors in 2015	676	71	41	95	84	27	38	18	120	112	70
e6	Num. TB culture positive animals that were not TB reactors in 2014	575	68	37	54	66	38	53	12	100	80	67
e2	Num. TB culture positive animals that were not TB reactors in 2013	583	63	33	32	98	28	30	7	131	92	69
e21	No. herds with TB culture positive animals that were not TB reactors in last 12 months	525	75	21	44	76	22	32	9	117	76	53
e22	No. herds with TB culture positive animals that were not TB reactors in last 13-24 months	466	56	28	43	62	26	31	8	93	77	42
e9	No. herds with TB culture positive animals that were not TB reactors in 2017	466	56	28	43	62	26	31	8	93	77	42
e10	No. herds with TB culture positive animals that were not TB reactors in 2016	469	45	21	57	63	26	31	11	100	68	47
e11	No. herds with TB culture positive animals that were not TB reactors in 2015	449	50	25	70	55	20	27	12	67	78	45
e12	No. herds with TB culture positive animals that were not TB reactors in 2014	372	47	25	37	48	27	27	10	66	51	34
e8	No. herds with TB culture positive animals that were not TB reactors in 2013	381	50	14	30	46	20	20	5	83	60	53
e23	% of TB animals that were TB culture positive that were not TB reactors in last 12 months	5.3	9.2	5.2	4.0	5.5	1.6	6.6	3.5	7.6	6.9	3.3
e24	% of TB animals that were TB culture positive that were not TB reactors in last 13-24 months	4.7	5.7	5.3	5.5	5.0	1.6	7.5	4.8	4.8	6.5	3.6
e15	% of TB animals that were TB culture positive that were not TB reactors in 2017	4.7	5.7	5.3	5.5	5.0	1.6	7.5	4.8	4.8	6.5	3.6
e16	% of TB animals that were TB culture positive that were not TB reactors in 2016	5.6	6.0	10.9	6.3	5.9	1.9	7.8	7.5	8.9	6.0	3.3
e17	% of TB animals that were TB culture positive that were not TB reactors in 2015	5.8	7.5	10.0	7.8	6.4	2.2	9.3	3.9	5.8	6.5	3.7
e18	% of TB animals that were TB culture positive that were not TB reactors in 2014	6.1	10.4	8.3	5.0	8.7	2.9	13.1	8.9	5.2	5.4	5.5
e14	% of TB animals that were TB culture positive that were not TB reactors in 2013	6.6	7.1	4.2	4.4	13.4	2.2	9.0	9.1	8.4	6.4	6.5

		Month = December 2018										
		(Data lagged by 4 months)										
Ref		Total	Armagh	Ballymena	Coleraine	Dungannon	Enniskillen	Mallusk	L'derry	Newry	Nt'ards	Omagh
g31	No. of confirmed TB reactors during last 12 months	6481	495	317	680	877	920	229	118	1066	876	903
g32	No. of confirmed TB reactors during last 13-24 months	7059	692	392	735	884	976	334	72	1324	925	725
g3	No. of confirmed TB reactors 2017	7059	692	392	735	884	976	334	72	1324	925	725
g4	No. of confirmed TB reactors 2016	5339	429	145	714	807	759	174	98	622	801	790
g5	No. of confirmed TB reactors 2015	5306	428	228	658	591	561	194	284	784	718	860
g6	No. of confirmed TB reactors 2014	4346	294	229	591	392	561	156	84	725	722	592
g2	No. of confirmed TB reactors 2013	3765	377	422	373	255	520	116	40	541	636	485
g33	Total animals with confirmed TB during last 12 months	7347	609	357	743	997	954	272	127	1297	1012	979
g34	Total animals with confirmed TB in last 13-24 months	7841	783	433	818	997	1016	385	80	1492	1053	784
g9	Total animals with confirmed TB in 2017	7841	783	433	818	997	1016	385	80	1492	1053	784
g10	Total animals with confirmed TB in 2016	6053	493	180	803	908	795	208	111	795	905	855
g11	Total animals with confirmed TB in 2015	5982	499	269	753	675	588	232	302	904	830	930
g12	Total animals with confirmed TB in 2014	4921	362	266	645	458	599	209	96	825	802	659
g8	Total animals with confirmed TB in 2013	4348	440	455	405	353	548	146	47	672	728	554
g35	Confirmed TB animal prevalence in last 12 months (%)	0.421	0.324	0.281	0.313	0.464	0.551	0.180	0.190	0.506	0.514	0.451
g36	Confirmed TB animal prevalence in last 13-24 months (%)	0.448	0.410	0.344	0.347	0.462	0.584	0.252	0.120	0.589	0.543	0.354
g15	Confirmed TB animal prevalence in 2017 (%)	0.448	0.410	0.344	0.347	0.462	0.584	0.252	0.120	0.589	0.543	0.354
g16	Confirmed TB animal prevalence in 2016 (%)	0.354	0.267	0.150	0.345	0.434	0.466	0.140	0.164	0.327	0.489	0.389
g17	Confirmed TB animal prevalence in 2015 (%)	0.360	0.288	0.226	0.326	0.336	0.347	0.160	0.447	0.392	0.459	0.436
g18	Confirmed TB animal prevalence in 2014 (%)	0.306	0.217	0.227	0.301	0.239	0.367	0.145	0.155	0.366	0.451	0.318
g14	Confirmed TB animal prevalence in 2013 (%)	0.268	0.255	0.399	0.189	0.179	0.330	0.104	0.076	0.299	0.402	0.263
g37	No. herds with confirmed TB in last 12 months	2380	227	147	283	334	280	108	48	392	287	274
g38	No. herds with confirmed TB in last 13-24 months	2494	254	158	260	339	253	126	42	430	315	317
g21	No. herds with confirmed TB in 2017	2494	254	158	260	339	253	126	42	430	315	317
g22	No. herds with confirmed TB in 2016	2045	205	99	281	293	198	87	45	297	247	293
g23	No. herds with confirmed TB in 2015	1936	163	103	296	222	201	101	77	272	228	273
g24	No. herds with confirmed TB in 2014	1606	126	123	199	171	181	85	50	253	195	223
g20	No. herds with confirmed TB in 2013	1648	157	120	174	144	210	77	29	293	206	238
g39	Confirmed TB herd prevalence in last 12 months (%)	10.50	10.23	10.79	11.39	12.22	9.47	6.90	5.51	10.59	15.31	9.49
g40	Confirmed TB herd prevalence in last 13-24 months (%)	10.85	11.08	11.55	10.37	12.13	8.47	7.97	4.75	11.54	16.66	10.75

g27	Confirmed TB herd prevalence in 2017 (%)	10.85	11.08	11.55	10.37	12.13	8.47	7.97	4.75	11.54	16.66	10.75
g28	Confirmed TB herd prevalence in 2016 (%)	8.76	8.92	7.14	10.99	10.32	6.48	5.39	5.11	7.92	12.73	9.70
g29	Confirmed TB herd prevalence in 2015 (%)	8.20	7.07	7.27	11.34	7.72	6.44	6.11	8.82	7.26	11.76	8.91
g30	Confirmed TB herd prevalence in 2014 (%)	6.94	5.54	8.82	7.99	6.04	5.94	5.24	5.62	6.92	10.31	7.31
g26	Confirmed TB herd prevalence in 2013 (%)	7.17	7.02	8.87	6.88	5.08	6.88	4.84	3.32	8.10	11.06	7.86

Explanatory Comments for Tuberculosis Statistics - B. Testing Herds

Ref	Data Title	Explanation
B16	No. herds with any test completed in month	Test of any disease status and size (herd or animal-level). Tests with no animals are excluded.
B17	No. herds with any test, from start of year	Test of any disease status and size (herd or animal-level) carried out on a herd since 1st January. Tests with no animals are excluded.
B29	All herds with any test, from start of year	Skin test of any disease status and size (herd or animal-level) carried out on a herd since 1st January. Tests with no animals are included.
B18	No. herds with any test, from start of year (no cattle)	Herd or individual test of any disease status (routine, risk or restricted) where no cattle were recorded at all such tests since 1st January.
B19	No. herds with herd test completed in month	Herd level test of any disease status (routine, risk or restricted) completed during the above month. Tests with no animals are excluded.
B20	No. herds with herd test, from start of year	Herd level test of any disease status (routine, risk or restricted) completed since 1st January. Tests with no animals are excluded.
B30	All herds with herd test, from start of year	Herd level test of any disease status (routine, risk or restricted) completed since 1st January. Tests with no animals are included.
B21	No. herds with herd test, from start of year (no cattle)	Herd level test of any disease status (routine, risk or restricted) where no cattle were recorded at all such herd tests since 1st January.
B22	No. herds with herd test during last 12 months	Herd level test of any disease status (routine, risk or restricted) completed in the 12 month period from the above month. Tests with no animals are excluded.
B31	No. herds with herd test during last 13-24 months	Herd level test of any disease status (routine, risk or restricted) completed in the 13-24 months from the above month. Tests with no animals are excluded.
B39	No. herds with herd test during the year	Herd level test of any disease status (routine, risk or restricted) completed in the calendar year. Tests with no animals are excluded.
B32	No. herds with herd test during the year	Herd level test of any disease status (routine, risk or restricted) completed in the calendar year. Tests with no animals are excluded.
B28	No. herds with herd test during the year	Herd level test of any disease status (routine, risk or restricted) completed in the calendar year. Tests with no animals are excluded.
B23	No. herds with herd test during the year	Herd level test of any disease status (routine, risk or restricted) completed in the calendar year. Tests with no animals are excluded.
B24	No. herds with herd test during the year	Herd level test of any disease status (routine, risk or restricted) completed in the calendar year. Tests with no animals are excluded.
B25	No. herds with any risk test completed	Herd has had a herd or individual level risk test since start of calendar year and number tested > 0.
B26	No. herds with herd risk test completed	Herd has had a herd level risk test since start of calendar year and number tested > 0.
B27	No. herds with restricted herd test completed	Herd has had a restricted herd test (RHT, RH1, RH2) since start of calendar year and number tested > 0.

Explanatory Comments for Tuberculosis Statistics - C. Testing Animals

Ref	Data Title	Explanation
C1	Total number of tests in current month	Number of herds and individual tests performed in the month stated above. Tests with no animals are excluded.
C2	Total number of tests from start of year	From 1st January. Tests with no animals are excluded.
C3	No. tests during the same time period in the previous year	From 1st January of previous year. Tests with no animals are excluded.
C4	% change between years	Difference between the number of tests carried out during the current year and the number carried out in the previous expressed as a percentage.
C5	No. tests in the previous 12 months	Last 12 month period from the above month. Tests with no animals are excluded.
C6	No. animal tests in current month	Animal test = a count of the number of animals tested within each herd or individual test. Some animals may have been tested multiple times during the year.
C7	No. animal tests from start of year	Number of animal tests carried out since 1st January.
C8	No. animal tests during the same time period in the previous year	Number of animal tests carried out from 1st January in the previous year over the same time interval as recorded for the current year.
C9	% change between years	Difference between the number of animal tests during the current year and the number carried out in the previous expressed as a percentage.
C10	No. animal tests in previous 12 months	Last 12 month period from the above month.
C11	No. cattle eligible for TB testing	Based on the average number of animals presented at TB herd tests over last 4 years.
C12	No. cattle herds eligible for TB testing	Based on cattle being presented for a TB herd tests over last 4 years. Herds with '0' cattle are excluded.

C13	No. restricted herd tests during month	All restricted herd tests (RHT, RH1 and RH2) carried out during the above month.
C14	No. animals tested	Total of the animals reported as being tested within restricted herd tests (RHT, RH1, RH2) during the above month.
C15	No. herd tests during month	Total of the animals reported as being tested within all herd tests during the above month.
C16	No. animals tested	Total of the animals reported as being tested within all herd tests during the above month.
C17	No. individual tests during month	Total of the animals reported as being tested within all individual tests during the above month.
C18	No. animals tested	Total of the animals reported as being tested within all individual tests during the above month.
C23	No. animals TB tested since start of year	Animals identified as having had at least one TB skin test since the start of the calendar year. Due to the same animals being sampled in different DVO areas, the 'Total' is not the sum of the DVO figures.
C19	No. animals TB tested in previous 12 months	Animals identified as having had at least one TB skin test during the last 12 month period from the above month. Due to the same animals being sampled in different DVO areas, the 'Total' is not the sum of the DVO figures.
C24	No. animals TB tested in previous 13-24 months	Animals identified as having had at least one TB skin test during the last 13-24 months from the above month. Due to the same animals being sampled in different DVO areas, the 'Total' is not the sum of the DVO figures.
C26	No. animals TB tested in the year	Animals identified as having had at least one TB skin test during the calendar year. Due to the same animals being sampled in different DVO areas, the 'Total' is not the sum of the DVO figures.
C25	No. animals TB tested in the year	Animals identified as having had at least one TB skin test during the calendar year. Due to the same animals being sampled in different DVO areas, the 'Total' is not the sum of the DVO figures.
C22	No. animals TB tested in the year	Animals identified as having had at least one TB skin test during the calendar year. Due to the same animals being sampled in different DVO areas, the 'Total' is not the sum of the DVO figures.
C20	No. animals TB tested in the year	Animals identified as having had at least one TB skin test during the calendar year. Due to the same animals being sampled in different DVO areas, the 'Total' is not the sum of the DVO figures.
C21	No. animals TB tested in the year	Animals identified as having had at least one TB skin test during the calendar year. Due to the same animals being sampled in different DVO areas, the 'Total' is not the sum of the DVO figures.
Explanatory Comments for Tuberculosis Statistics - D. Results		
Ref	Data Title	Explanation
D1	No. of herds with TB reactors during month	A herd is included in this figure if the herd number had a TB skin test reactor during the above month.
D2	No. of new reactor herds during month	A herd is defined as being a TB reactor herd if it had at least one TB reactor animal in that month and no TB reactor animals during the previous 12 months.
D3	No. of new reactor herds since start of year	= Since 1st January
D4	No. of new reactor herds in the previous 12 months	Last 12 month period from the above month.
D26	No. of new reactor herds in previous 13-24 months	Last 13-24 month period from the above month.
D5	No. of TB reactor animals during month	A TB reactor animal is defined as an animal where the manual interpretation field for a skin test is positive ('P') with the first test date being taken as the time at which the animal became a reactor. Currently animals with lesions at routine slaughter (*LRS*) are not taken into account.
D6	No. of TB reactor animals since start of year	= Since 1st January
D7	No. of reactor animals in the previous 12 months	Last 12 month period from the above month.
D27	No. of reactor animals in previous 13-24 months	Last 13-24 month period from the above month.
D20	Cumulative herd incidence in year (%)	Number of NEW reactor herds since the start of the calendar year as a proportion of cattle herds which have presented cattle for a TB herd test during the same time period.
D9	Annual herd incidence over the last 12 months (%)	Number of NEW reactor herds during the last 12 months as a proportion of cattle herds which have presented cattle for a TB herd test during the same time period.
D28	Annual herd incidence over the last 13-24 months (%)	Number of NEW reactor herds during the last 13-24 months as a proportion of cattle herds which have presented cattle for a TB herd test during the same time period.
D38	In-year Herd Incidence (%)	Number of NEW reactor herds during the year as a proportion of cattle herds which have presented cattle for a TB herd test during the same time period.
D30	In-year Herd Incidence (%)	Number of NEW reactor herds during the year as a proportion of cattle herds which have presented cattle for a TB herd test during the same time period.
D16	In-year Herd Incidence (%)	Number of NEW reactor herds during the year as a proportion of cattle herds which have presented cattle for a TB herd test during the same time period.
D10	In-year Herd Incidence (%)	Number of NEW reactor herds during the year as a proportion of cattle herds which have presented cattle for a TB herd test during the same time period.
D11	In-year Herd Incidence (%)	Number of NEW reactor herds during the year as a proportion of cattle herds which have presented cattle for a TB herd test during the same time period.
D21	Cumulative animal incidence in year (%)	Number of reactor animals during the above month as a proportion of cattle which have been presented for a TB test during the same time period.
D12	Annual animal incidence over the last 12 months (%)	Number of reactor animals during the last 12 months as a proportion of cattle which have been presented for a TB test during the same time period.
D29	Annual animal incidence over the last 13-24 months (%)	Number of reactor animals during the last 13-24 months as a proportion of cattle which have been presented for a TB test during the same time period.
D39	In year Animal Incidence (%)	Number of reactor animals during the year as a proportion of cattle which have been presented for a TB herd test during the same time period.

D31	In year Animal Incidence (%)	Number of reactor animals during the year as a proportion of cattle which have been presented for a TB herd test during the same time period.
D15	In year Animal Incidence (%)	Number of reactor animals during the year as a proportion of cattle which have been presented for a TB herd test during the same time period.
D13	In year Animal Incidence (%)	Number of reactor animals during the year as a proportion of cattle which have been presented for a TB herd test during the same time period.
D14	In year Animal Incidence (%)	Number of reactor animals during the year as a proportion of cattle which have been presented for a TB herd test during the same time period.
D34	APT during current month	= The reactor disclosure rate per 1,000 animal tests current calendar month.
D22	APT since start of year	The reactor disclosure rate per 1,000 animal tests since the start of the calendar year.
D17	Current 12 month moving average APT	The reactor disclosure rate per 1,000 animal tests. Current refers to the rate over the last 12 months.
D42	In year APT	The reactor disclosure rate per 1,000 animal tests during the calendar year.
D40	In year APT	The reactor disclosure rate per 1,000 animal tests during the calendar year.
D32	In year APT	The reactor disclosure rate per 1,000 animal tests during the calendar year.
D18	In year APT	The reactor disclosure rate per 1,000 animal tests during the calendar year.
D19	In year APT	The reactor disclosure rate per 1,000 animal tests during the calendar year.
D23	No. negative in contacts since start of year	Number of animals taken as negative in contacts since the start of the year.
d46	No. Negative in contacts over last 12 months (%)	= Number of negative in contacts during the last 12 months
D43	No. negative in contacts during the year	Number of animals taken as negative in contacts during the year.
D41	No. negative in contacts during the year	Number of animals taken as negative in contacts during the year.
D33	No. negative in contacts during the year	Number of animals taken as negative in contacts during the year.
D24	No. negative in contacts during the year	Number of animals taken as negative in contacts during the year.
D25	No. negative in contacts during the year	Number of animals taken as negative in contacts during the year.
D37	Reactor removal time during the year	Figures given are median values for working days estimated from calendar days (calendar days multiplied by 0.685). Reactors which are not yet slaughtered or where they they were first declared as reactors at slaughter are excluded.
D45	Reactor removal time during the year	Figures given are median values for working days estimated from calendar days (calendar days multiplied by 0.685). Reactors which are not yet slaughtered or where they they were first declared as reactors at slaughter are excluded.
D35	Reactor removal time during the year	Figures given are median values for working days estimated from calendar days (calendar days multiplied by 0.685). Reactors which are not yet slaughtered or where they they were first declared as reactors at slaughter are excluded.
D44	Reactor removal time during the year	Figures given are median values for working days estimated from calendar days (calendar days multiplied by 0.685). Reactors which are not yet slaughtered or where they they were first declared as reactors at slaughter are excluded.
D36	Reactor removal time during the year	Figures given are median values for working days estimated from calendar days (calendar days multiplied by 0.685). Reactors which are not yet slaughtered or where they they were first declared as reactors at slaughter are excluded.

g35	Confirmed TB animal prevalence in last 12 months (%)	Number of TB reactors that were confirmed during the last 12 months by the presence of visible lesions at slaughter and/or by laboratory confirmation (histopathology and/or culture) plus the number of other animals where M. bovis was cultured from TB-like lesions found at slaughter during the last 12 months that were not identified as TB reactor animals divided by the number of animals tuberculin tested during the last 12 months expressed as a %
g36	Confirmed TB animal prevalence in last 13-24 months (%)	Number of TB reactors that were confirmed during the last 13-24 months by the presence of visible lesions at slaughter and/or by laboratory confirmation (histopathology and/or culture) plus the number of other animals where M. bovis was cultured from TB-like lesions found at slaughter during the last 13-24 months that were not identified as TB reactor animals divided by the number of animals tuberculin tested during the last 13-24 months expressed as a %
g18	Confirmed TB animal prevalence in year (%)	Number of TB reactors that were confirmed during the year by the presence of visible lesions at slaughter and/or by laboratory confirmation (histopathology and/or culture) plus the number of other animals where M. bovis was cultured from TB-like lesions found at slaughter during the year that were not identified as TB reactor animals divided by the number of animals tuberculin tested during the year expressed as a %
g14	Confirmed TB animal prevalence in year (%)	Number of TB reactors that were confirmed during the year by the presence of visible lesions at slaughter and/or by laboratory confirmation (histopathology and/or culture) plus the number of other animals where M. bovis was cultured from TB-like lesions found at slaughter during the year that were not identified as TB reactor animals divided by the number of animals tuberculin tested during the year expressed as a %
g15	Confirmed TB animal prevalence in year (%)	Number of TB reactors that were confirmed during the year by the presence of visible lesions at slaughter and/or by laboratory confirmation (histopathology and/or culture) plus the number of other animals where M. bovis was cultured from TB-like lesions found at slaughter during the year that were not identified as TB reactor animals divided by the number of animals tuberculin tested during the year expressed as a %
g16	Confirmed TB animal prevalence in year (%)	Number of TB reactors that were confirmed during the year by the presence of visible lesions at slaughter and/or by laboratory confirmation (histopathology and/or culture) plus the number of other animals where M. bovis was cultured from TB-like lesions found at slaughter during the year that were not identified as TB reactor animals divided by the number of animals tuberculin tested during the year expressed as a %
g17	Confirmed TB animal prevalence in year (%)	Number of TB reactors that were confirmed during the year by the presence of visible lesions at slaughter and/or by laboratory confirmation (histopathology and/or culture) plus the number of other animals where M. bovis was cultured from TB-like lesions found at slaughter during the year that were not identified as TB reactor animals divided by the number of animals tuberculin tested during the year expressed as a %
g37	No. herds with confirmed TB in last 12 months	Herds that had at least one confirmed TB animal during the last 12 months.
g38	No. herds with confirmed TB in last 13-24 months	Herds that had at least one confirmed TB animal during the last 13-24 months.
g24	No. herds with confirmed TB in year	Herds that had at least one confirmed TB animal during the year.
g20	No. herds with confirmed TB in year	Herds that had at least one confirmed TB animal during the year.
g21	No. herds with confirmed TB in year	Herds that had at least one confirmed TB animal during the year.
g22	No. herds with confirmed TB in year	Herds that had at least one confirmed TB animal during the year.
g23	No. herds with confirmed TB in year	Herds that had at least one confirmed TB animal during the year.
g39	Confirmed TB herd prevalence in last 12 months (%)	Number of herds that had at least one confirmed TB animal during the last 12 months divided the number of herds that presented cattle at a TB herd test expressed as a %.
g40	Confirmed TB herd prevalence in last 13-24 months (%)	Number of herds that had at least one confirmed TB animal during the last 13-24 months divided the number of herds that presented cattle at a TB herd test expressed as a %.
g30	Confirmed TB herd prevalence in year (%)	Number of herds that had at least one confirmed TB animal during the year divided the number of herds that presented cattle at a TB herd test expressed as a %.
g26	Confirmed TB herd prevalence in year (%)	Number of herds that had at least one confirmed TB animal during the year divided the number of herds that presented cattle at a TB herd test expressed as a %.
g27	Confirmed TB herd prevalence in year (%)	Number of herds that had at least one confirmed TB animal during the year divided the number of herds that presented cattle at a TB herd test expressed as a %.
g28	Confirmed TB herd prevalence in year (%)	Number of herds that had at least one confirmed TB animal during the year divided the number of herds that presented cattle at a TB herd test expressed as a %.
g29	Confirmed TB herd prevalence in year (%)	Number of herds that had at least one confirmed TB animal during the year divided the number of herds that presented cattle at a TB herd test expressed as a %.