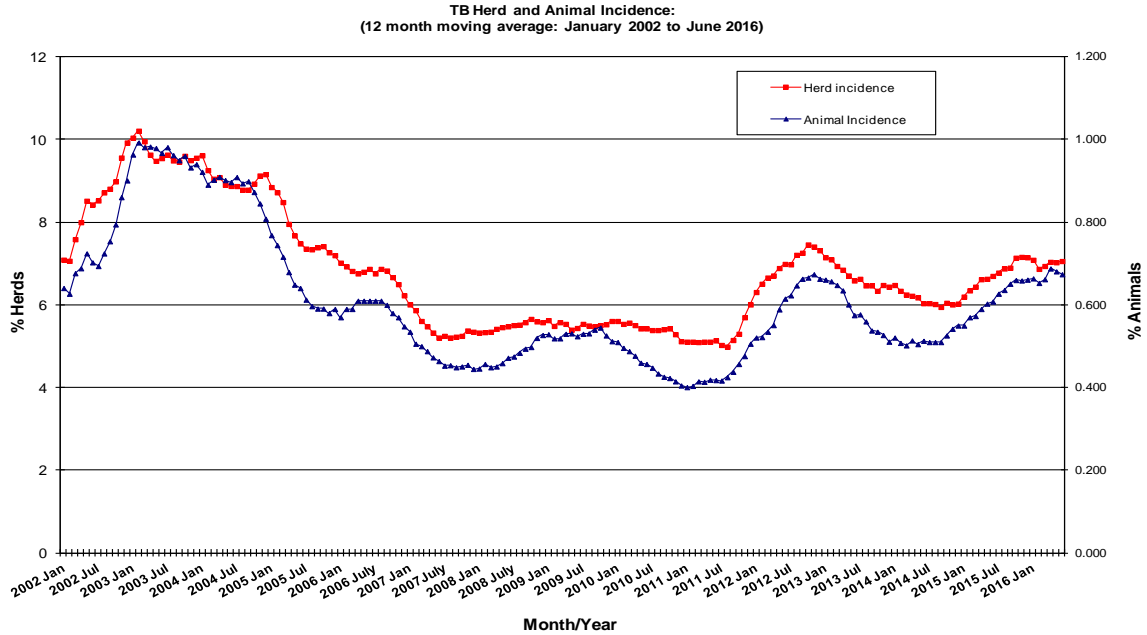
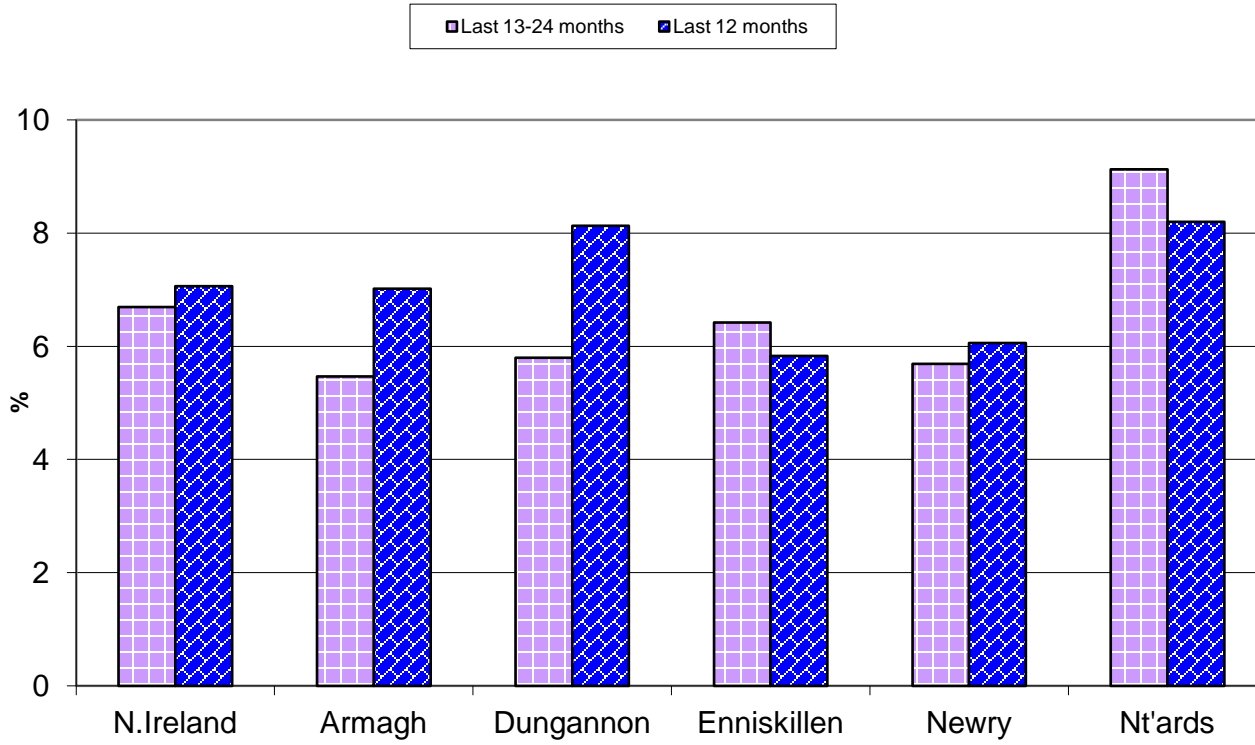


Tuberculosis: Statistics for June 2016

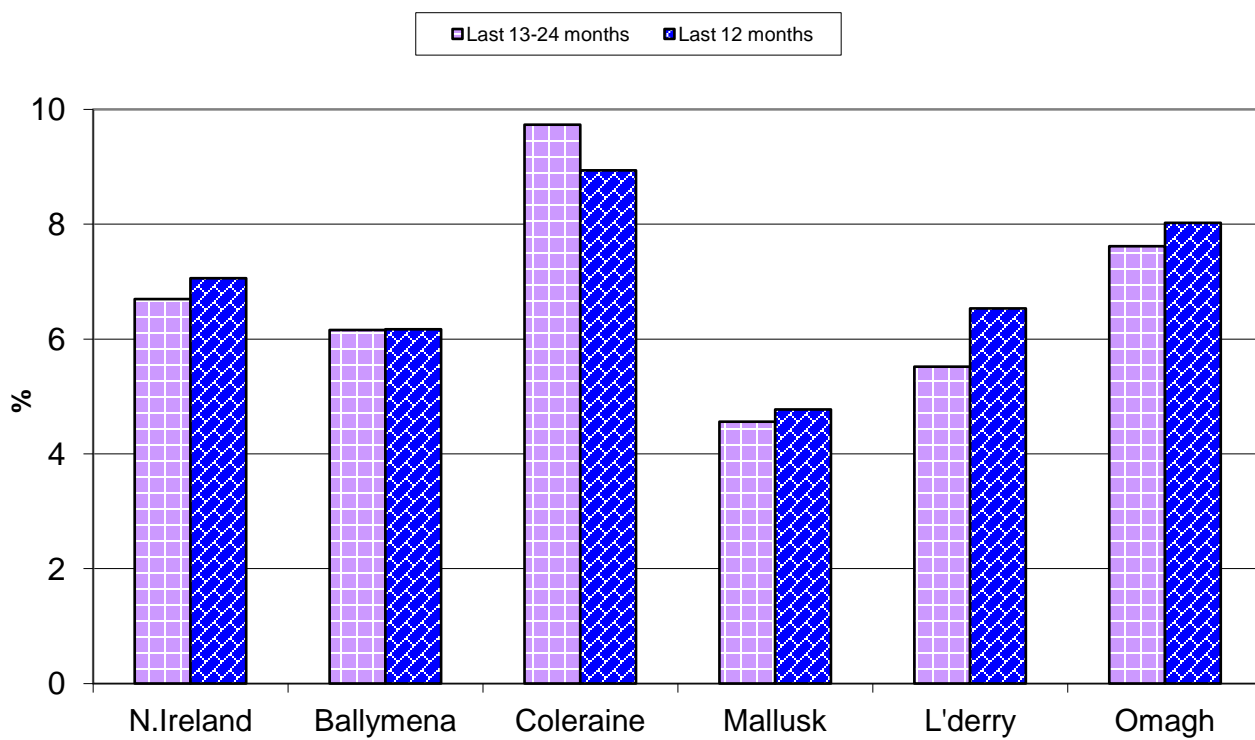
Tests Completed	Herds	Number of herds tested (any test), by DVO	Cumulative Statistics	
		Number of herds with herd-level test, by DVO	Cumulative Statistics	
		Number of herds with any risk test, by DVO		
		Number of herds with herd-level risk test, by DVO		
		Number of herds with herd-level restricted test, by DVO		
	Animals	Total number of tests performed, by DVO	Cumulative Statistics	
		Total number of animals tests, by DVO	Cumulative Statistics	
		Total number of restricted herd tests, by DVO	Number of animals tested	
		Total number of herd tests, by DVO	Number of animals tested	
		Total number of individual tests, by DVO	Number of animals tested	
Total number of animals tested, by DVO				
Summary Statistics	Herds with TB reactors during month, by DVO	Cumulative Statistics	APT	
	Number of new reactor herds, by DVO	Cumulative Statistics	Negative-in-contacts	
	Number of new reactor animals, by DVO		Reactor removal times	
	Herd Prevalance			
	Herd Incidence			
	Animal Incidence			
	Number of reactor animals by month and by DVO			
	Number of new reactor herds by month and by DVO			
	Total number of all reactor herds by DVO			
Summary Charts	Current Animal Incidence Chart	Monthly TB reactors chart	Yearly Confirmed Herd Prevalence	
	Yearly Animal Incidence Chart	New TB reactor herds	Current Confirmed Herd Prevalence	
	Current Herd Incidence Chart	TB Herd & Animal Incidence		
	Yearly Herd Incidence Chart			

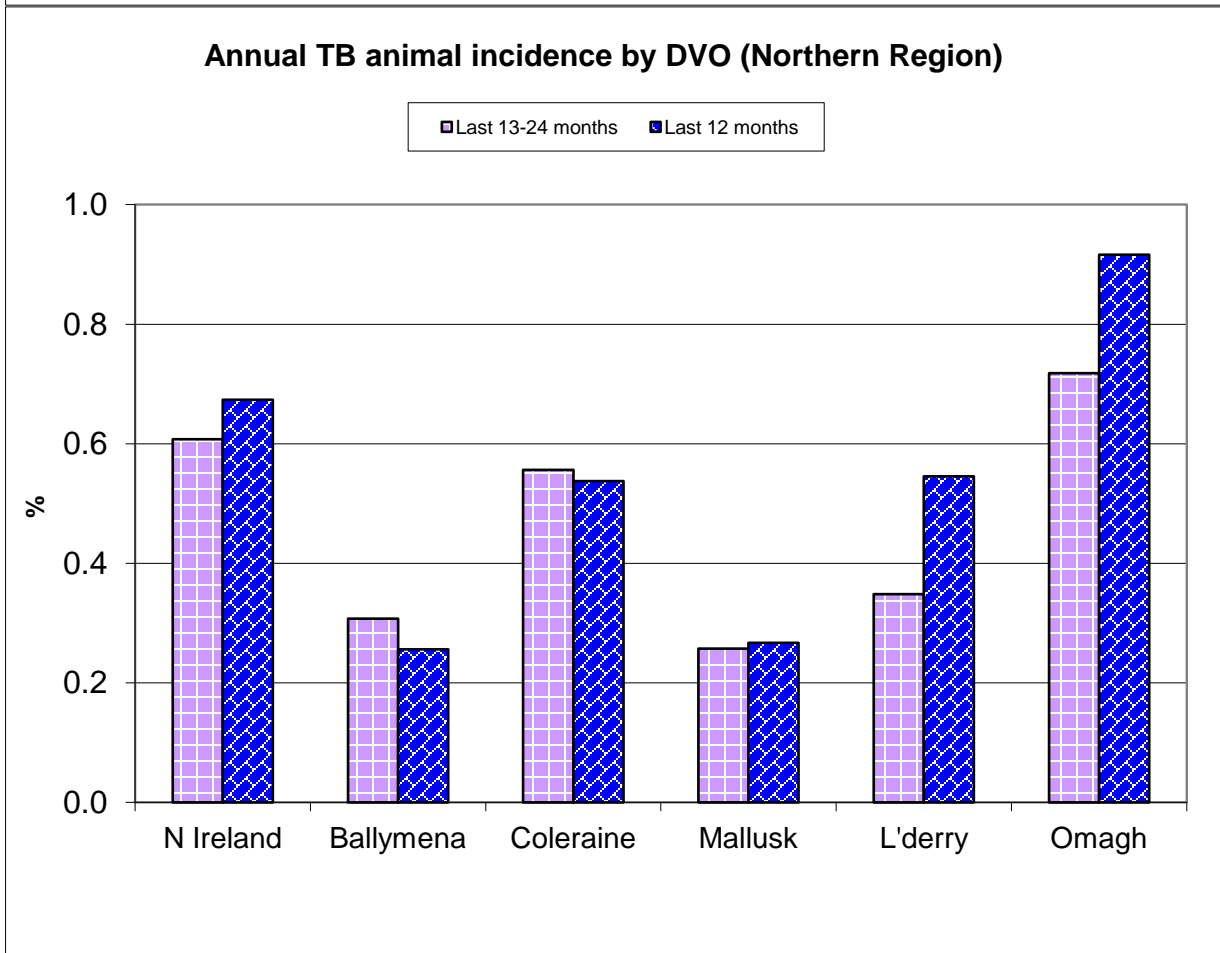
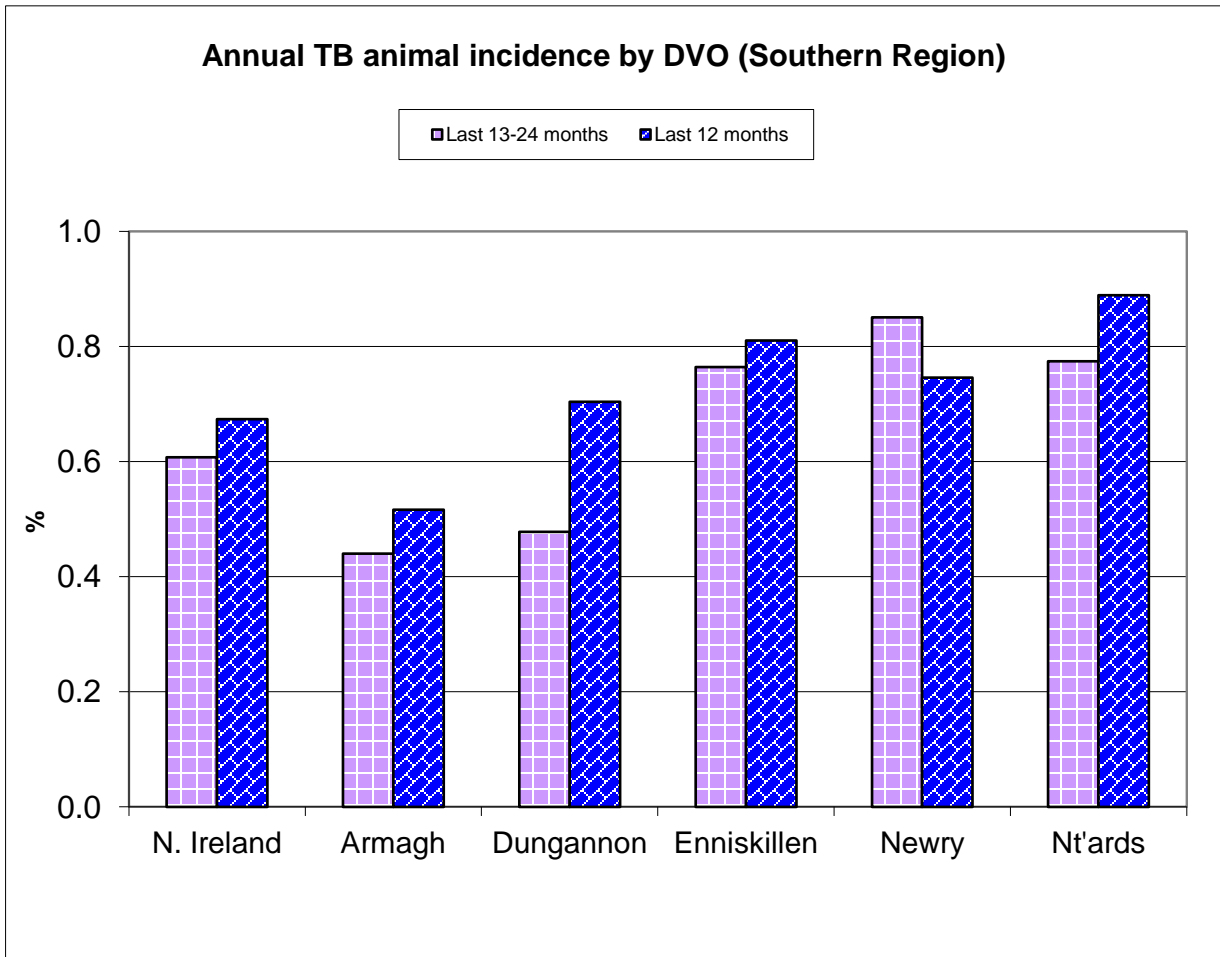


Annual TB herd incidence by DVO (Southern Region)

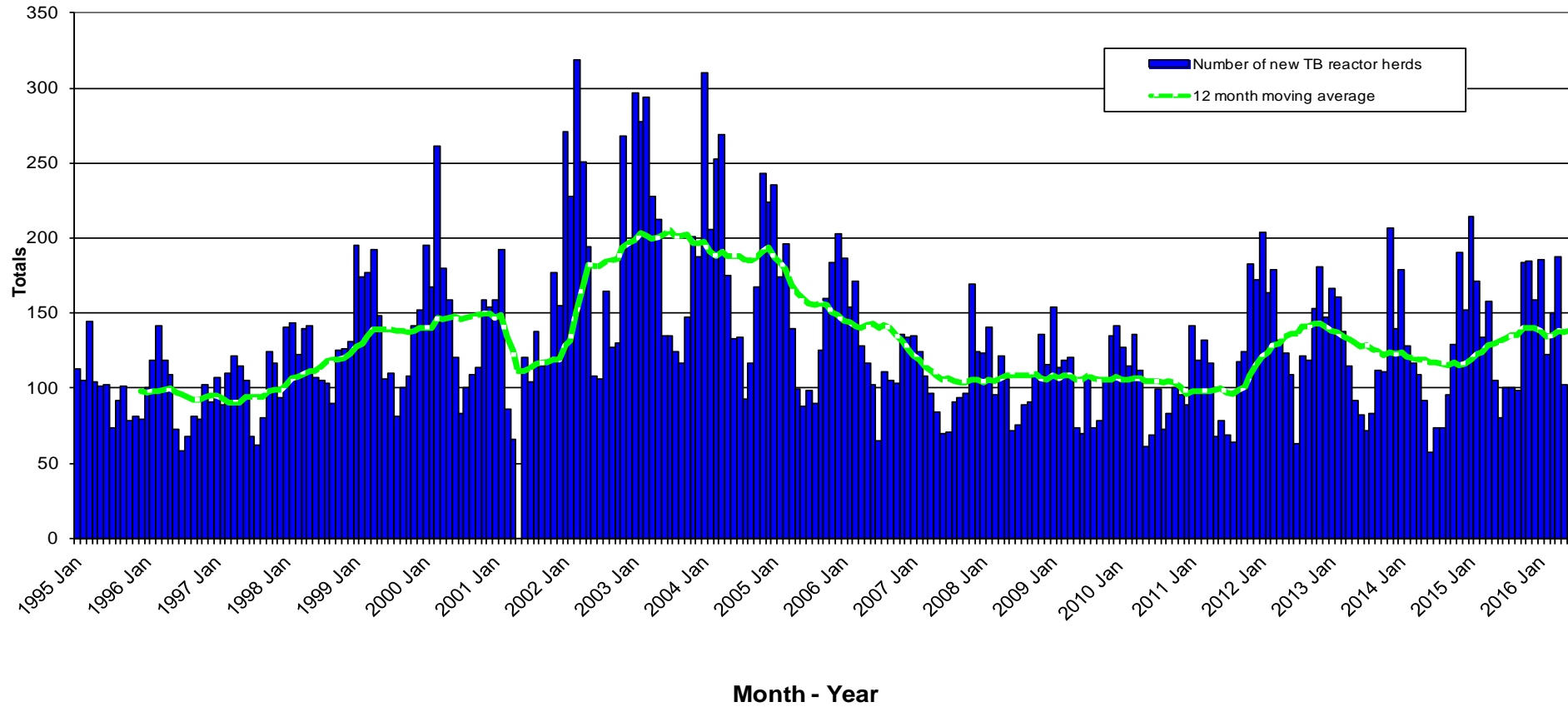


Annual TB herd incidence by DVO (Northern Region)

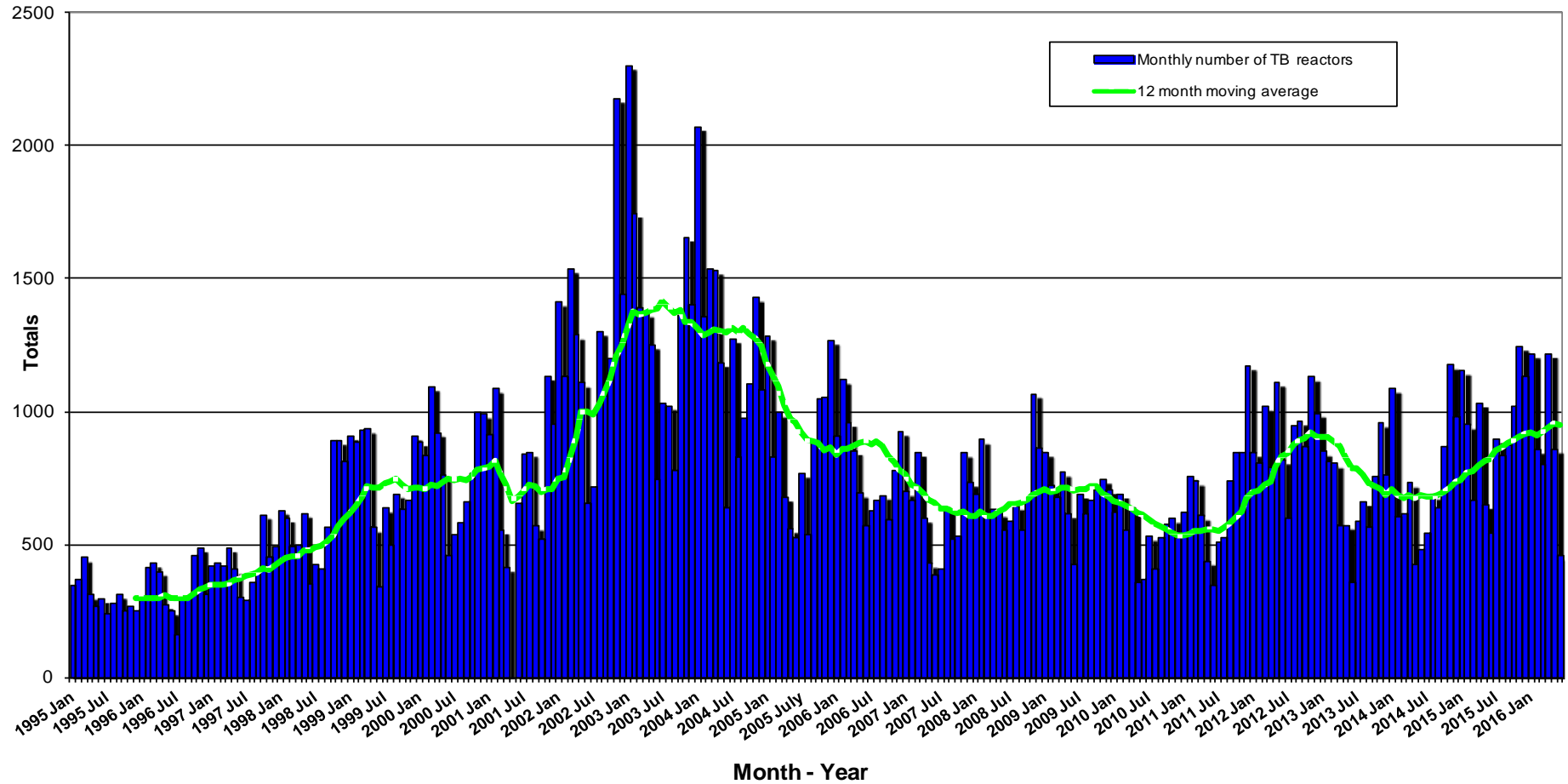




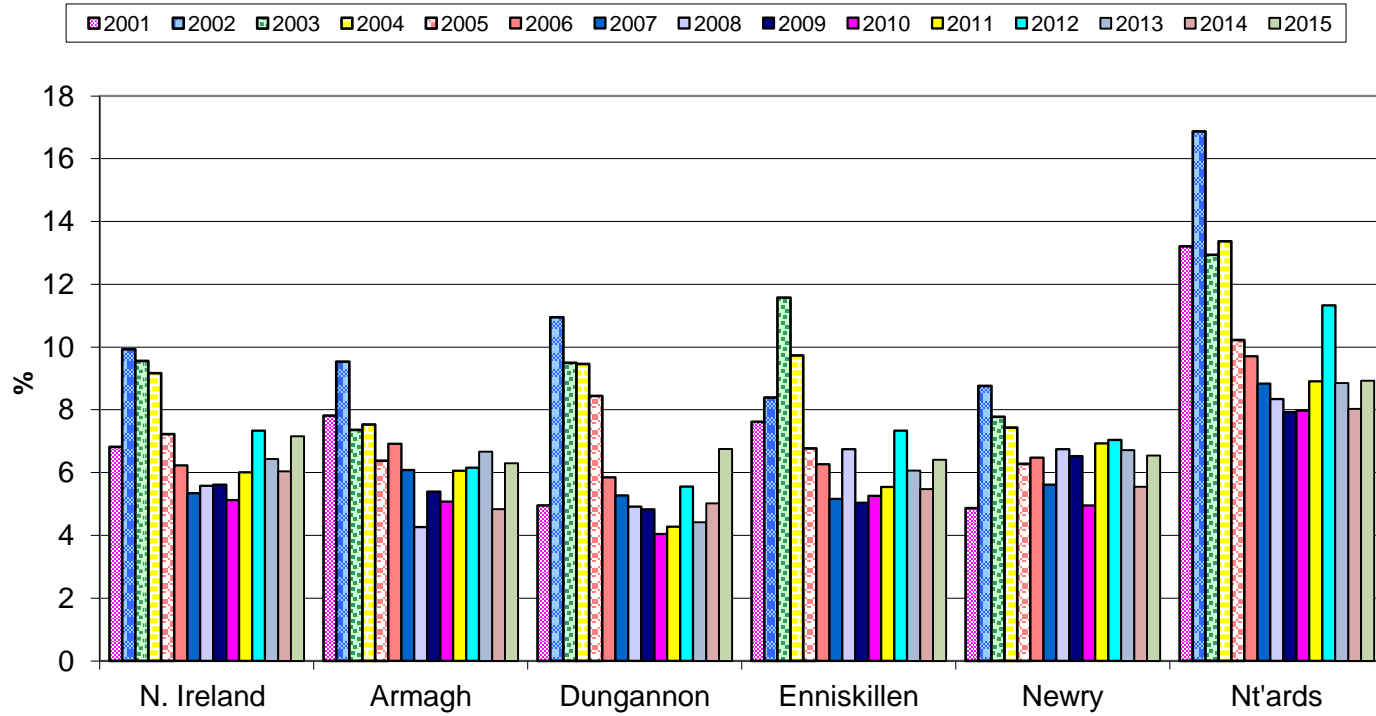
New TB Reactor Herds: January 1995 to June 2016



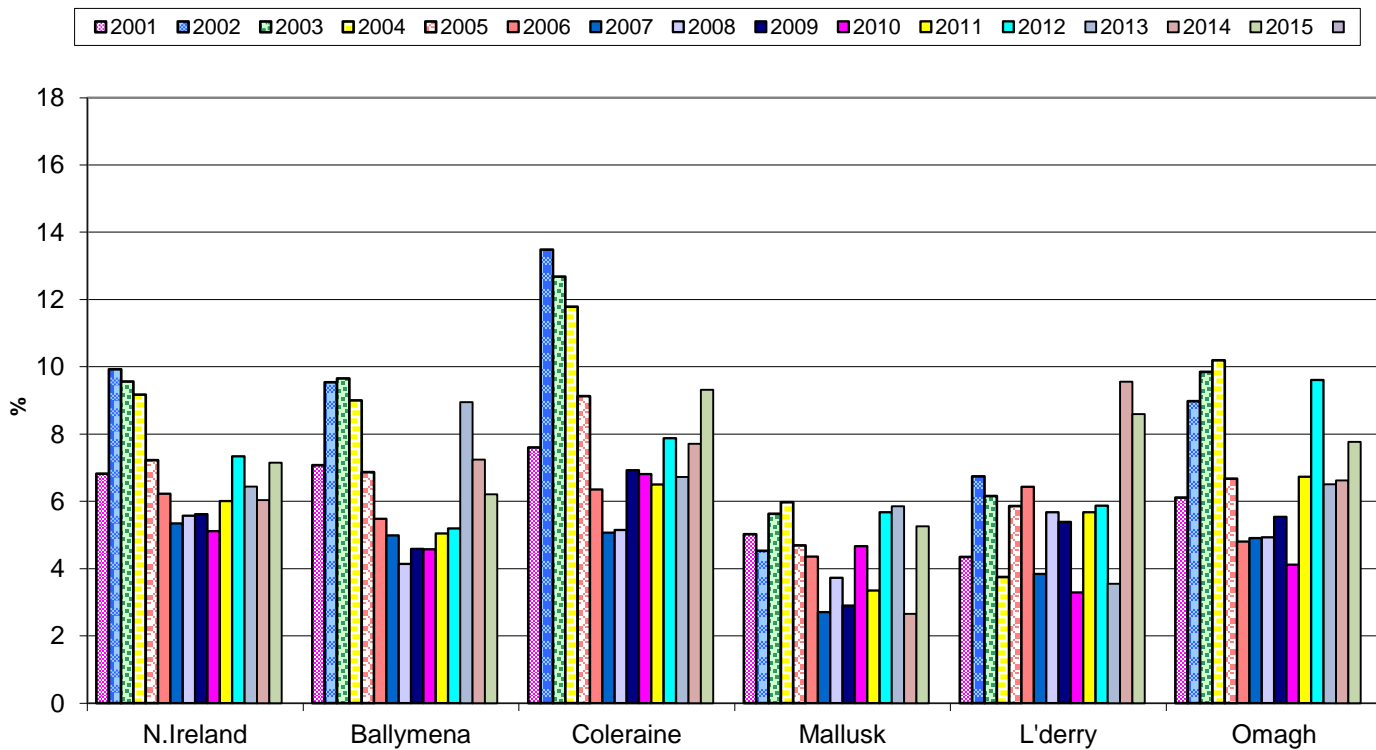
TB Reactors: January 1995 to June 2016

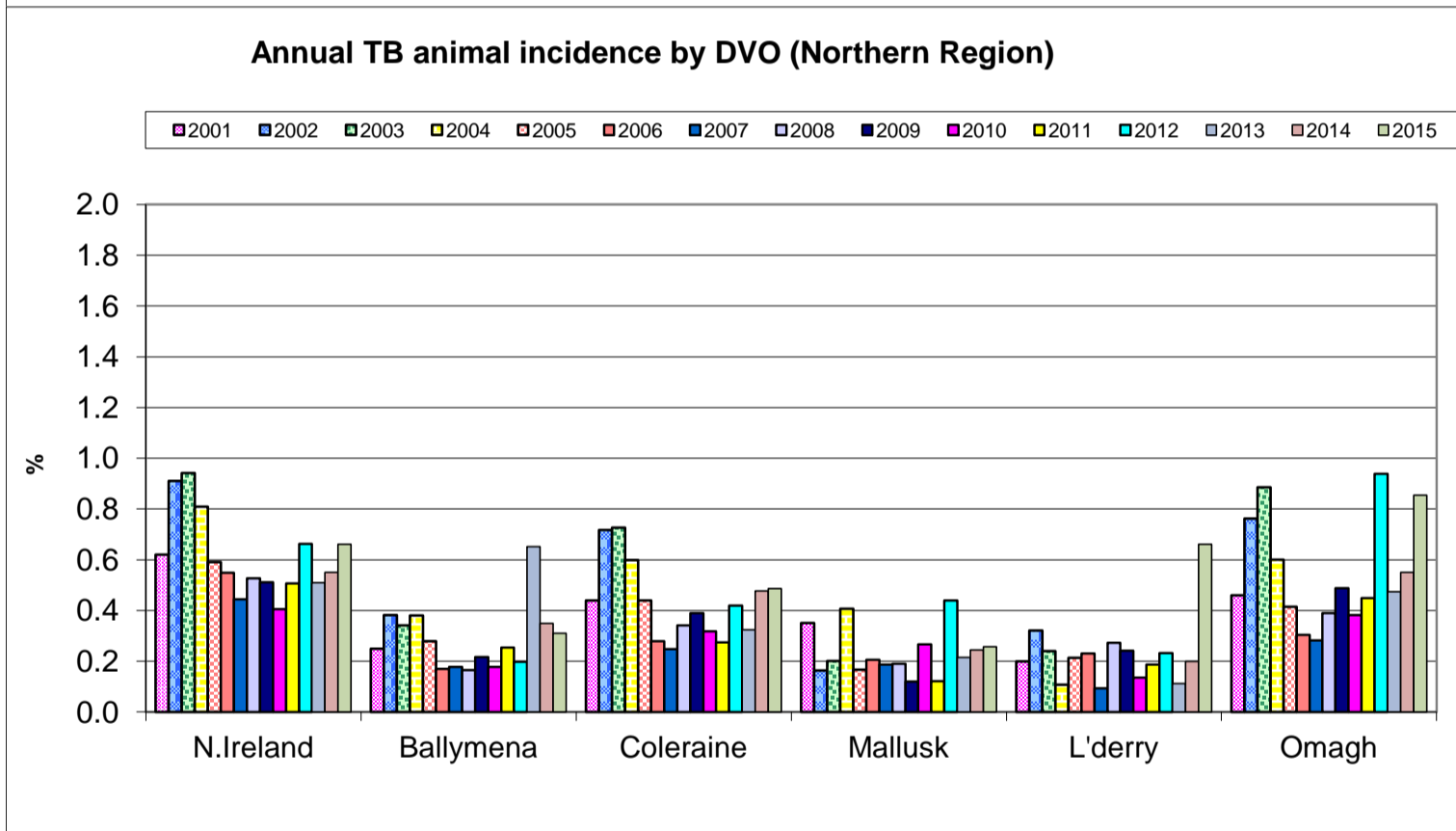
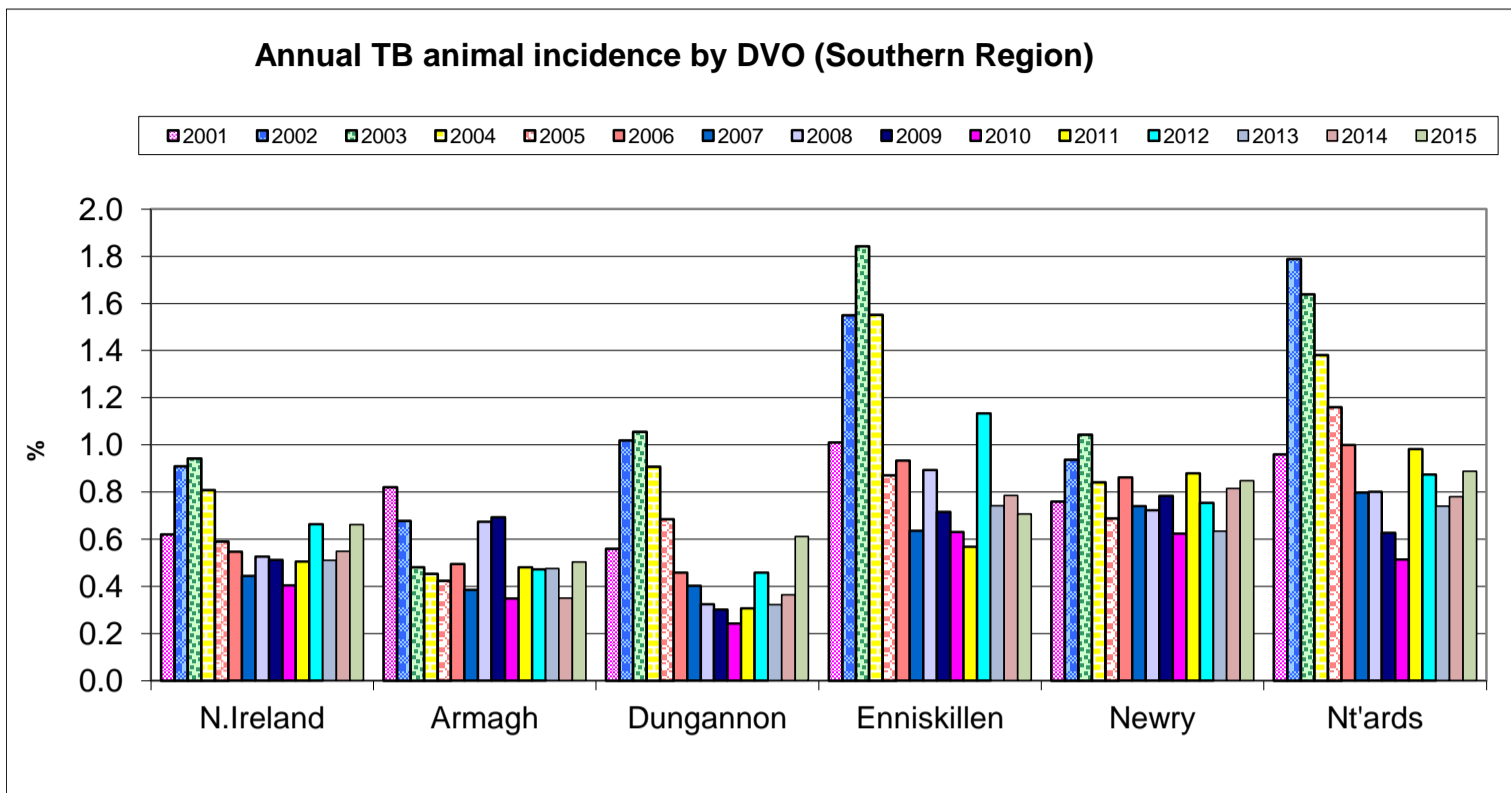


Annual TB herd incidence by DVO (Southern Region)

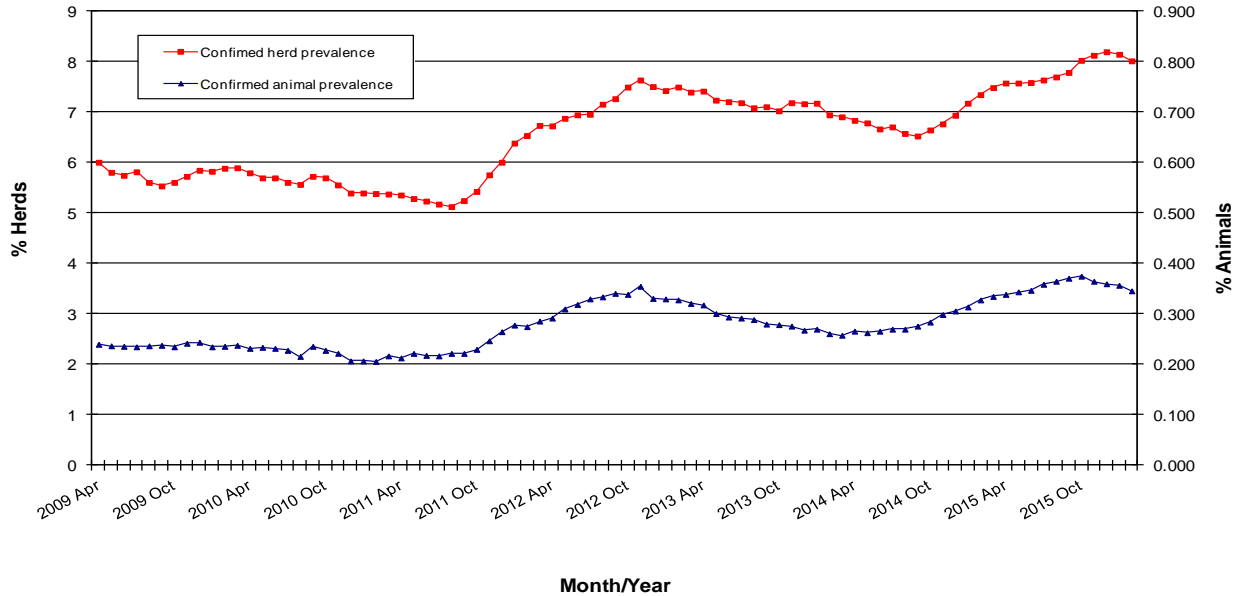


Annual TB herd incidence by DVO (Northern Region)

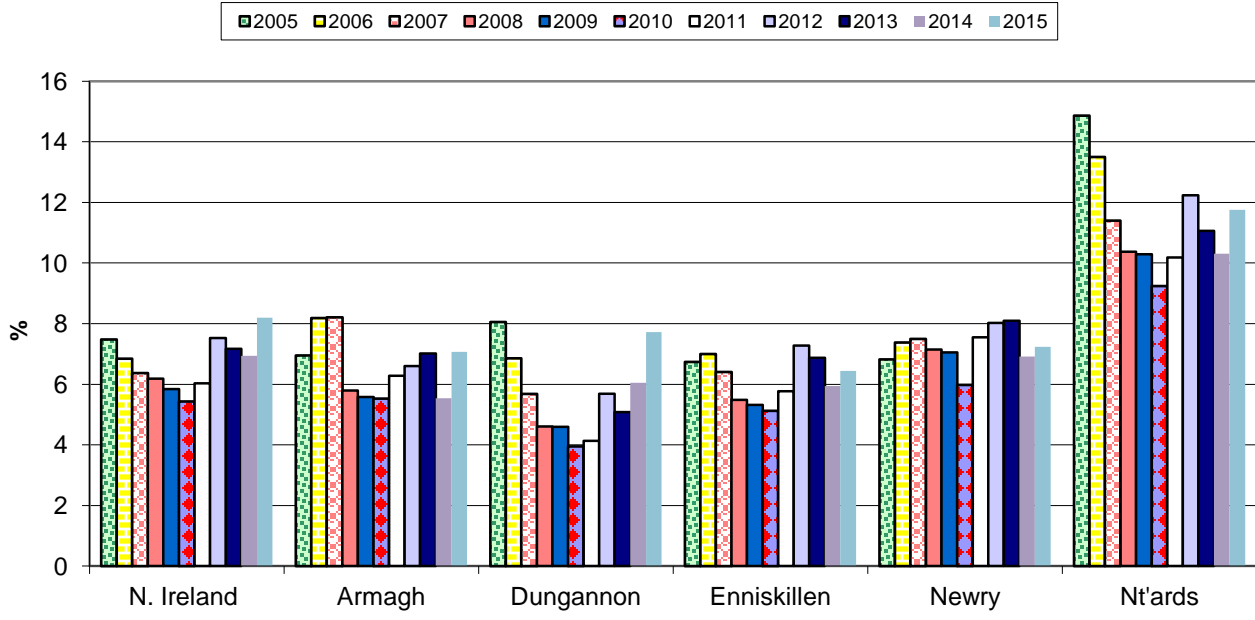




**TB Confirmed Herd^ and Animal Prevalence:
(12 month moving average: April 2009 to February 2016)**

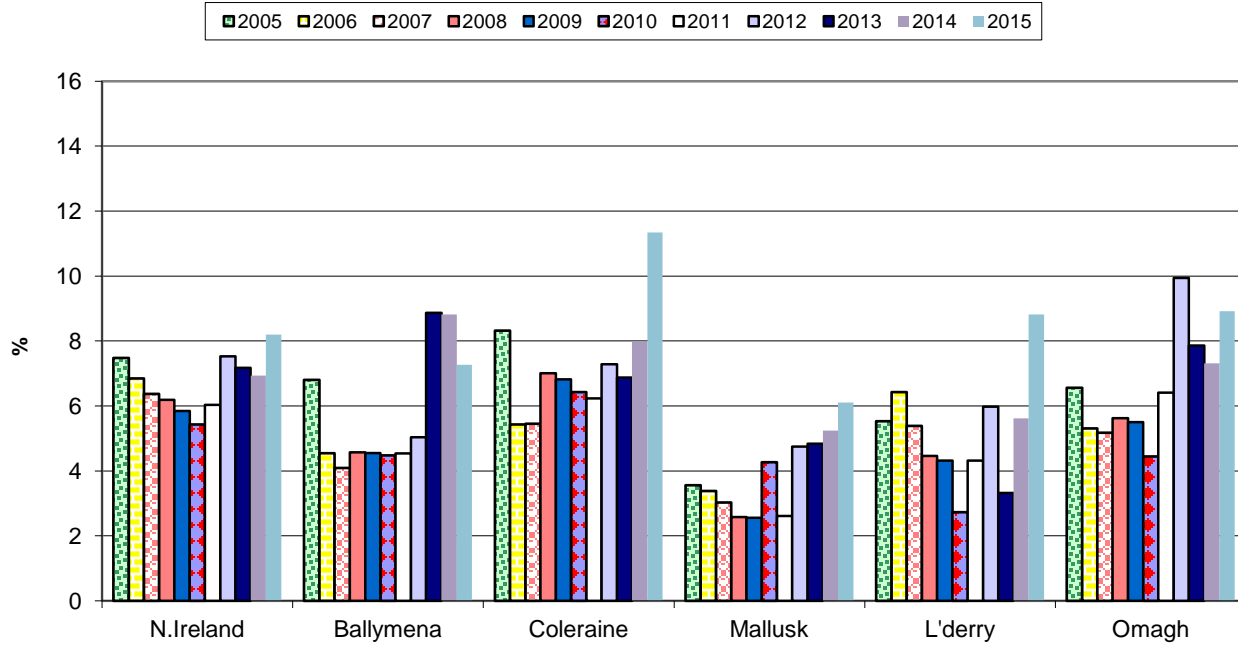


Annual confirmed TB herd prevalence by DVO (Southern Region)



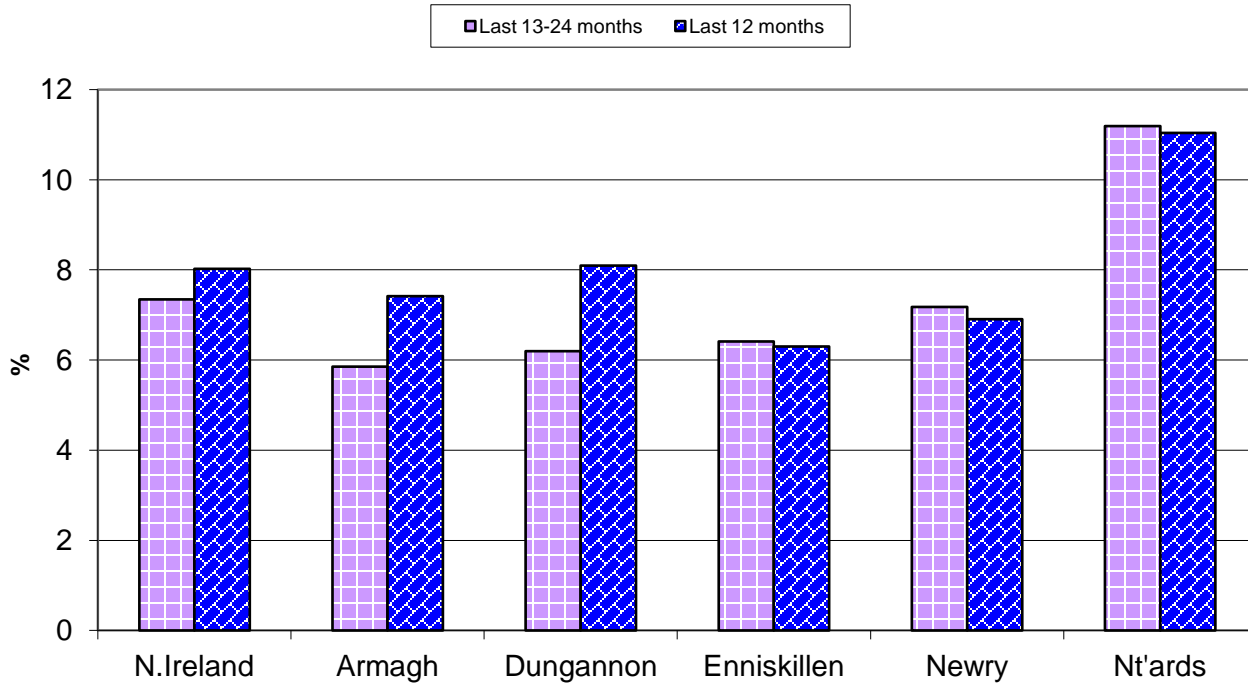
^ numerator includes all herds that had confirmed TB within the 12 month period

Annual confirmed TB herd prevalence by DVO (Northern Region)



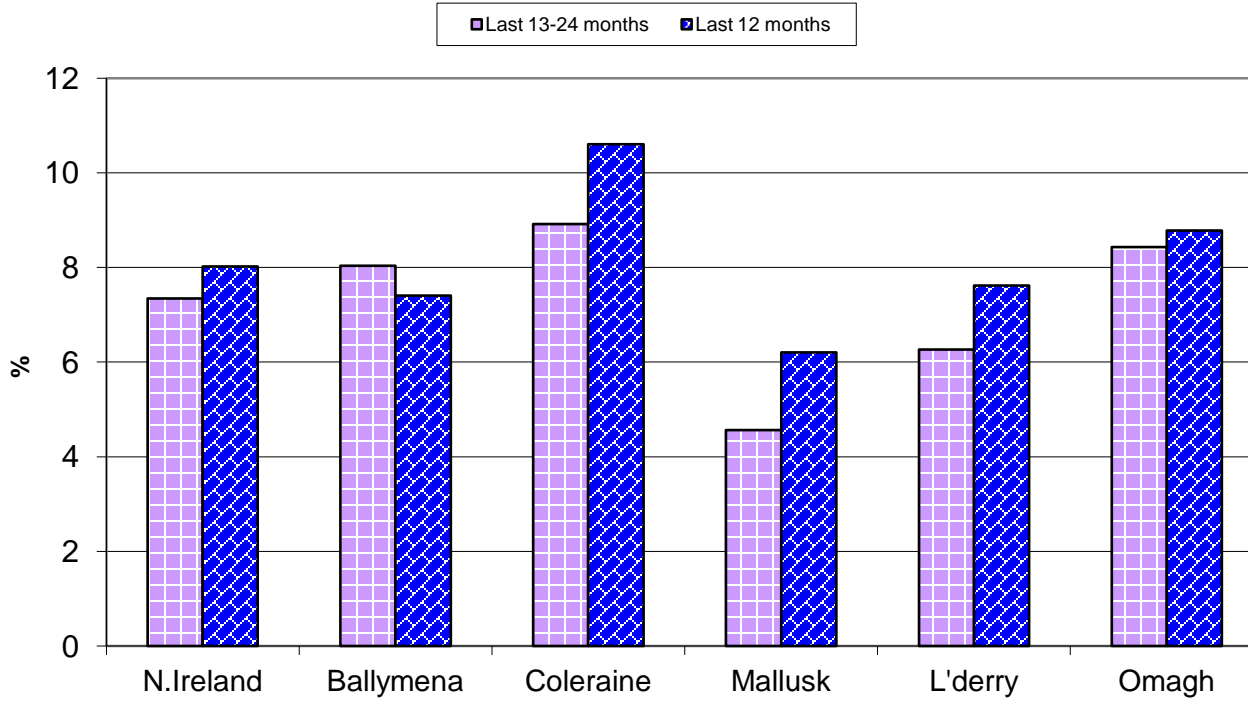
^ numerator includes all herds that had confirmed TB within the 12 month period

Annual confirmed TB herd prevalence[^] by DVO (Southern Region)

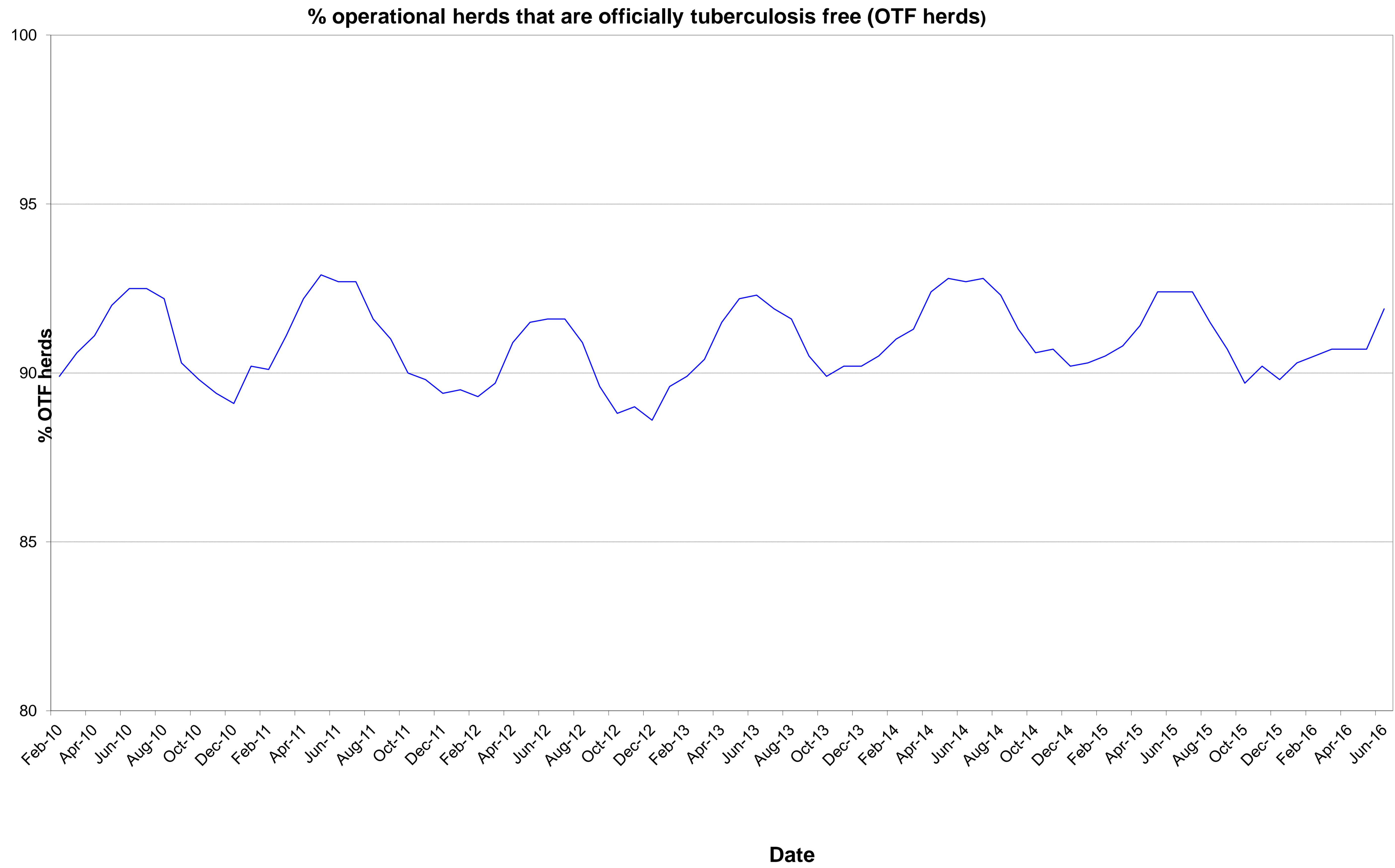


[^] numerator includes all herds that had confirmed TB within the 12 month period

Annual confirmed TB herd prevalence[^] by DVO (Northern Region)



[^] numerator includes all herds that had confirmed TB within the 12 month period



Month = June 2016

Ref.	Total	Armagh	Ballymena	Coleraine	Dungannon	Enniskillen	Mallusk	L'derry	Newry	Nt'ards	Omagh	
d1	No. of herds with TB reactors during month	167	13	8	25	23	18	6	5	21	26	22
d2	No. of new reactor herds during month	92	8	5	14	15	11	2	2	9	17	9
d3	No. of new reactor herds since start of year	840	91	51	124	130	97	35	11	95	81	125
d4	No. of new reactor herds in the previous 12 months	1666	163	87	232	234	180	79	58	227	161	245
d26	No. of new reactor herds in the previous 13-24 months	1577	126	87	252	166	200	76	49	211	175	235
d5	No. of TB reactor animals during month	458	23	15	46	62	90	16	10	61	78	57
d6	No. of TB reactor animals since start of year	5412	437	165	655	714	743	201	86	706	683	1022
d7	No. of reactor animals in the previous 12 months	11417	918	307	1250	1449	1367	390	372	1769	1605	1990
d27	No. of reactor animals in the previous 13-24 months	9896	749	360	1233	928	1255	370	223	1896	1377	1505
d20	Cumulative herd incidence in year (%)	5.41	6.08	5.51	6.91	6.92	4.91	3.47	2.03	3.77	6.10	6.11
d9	Annual herd incidence over the last 12 months (%)	7.06	7.02	6.17	8.94	8.13	5.83	4.77	6.53	6.06	8.20	8.02
d28	Annual herd incidence over the last 13-24 months (%)	6.70	5.47	6.16	9.73	5.80	6.42	4.56	5.52	5.69	9.12	7.62
d38	2015 Herd Incidence (%)	7.15	6.29	6.21	9.31	6.75	6.41	5.26	8.59	6.54	8.92	7.77
d30	2014 Herd Incidence (%)	6.03	4.84	7.24	7.71	5.02	5.48	5.24	4.83	5.55	8.03	6.62
d16	2013 Herd Incidence (%)	6.44	6.66	8.94	6.72	4.41	6.06	5.85	3.55	6.72	8.86	6.51
d10	2012 Herd Incidence (%)	7.34	6.15	5.19	7.88	5.55	7.34	5.67	5.87	7.04	11.33	9.61
d11	2011 Herd Incidence (%)	6.00	6.05	5.05	6.51	4.28	5.54	3.35	5.68	6.92	8.91	6.73
d21	Cumulative animal incidence in year (%)	0.468	0.366	0.205	0.391	0.545	0.683	0.218	0.201	0.430	0.565	0.710
d12	Annual animal incidence over the last 12 months (%)	0.674	0.517	0.256	0.537	0.704	0.811	0.267	0.545	0.746	0.889	0.916
d29	Annual animal incidence over the last 13-24 months (%)	0.608	0.440	0.307	0.556	0.478	0.764	0.258	0.348	0.851	0.774	0.718
d39	2015 Animal Incidence (%)	0.661	0.504	0.310	0.486	0.612	0.707	0.256	0.661	0.848	0.889	0.855
d31	2014 Animal Incidence (%)	0.550	0.350	0.349	0.476	0.364	0.786	0.244	0.199	0.815	0.781	0.551

d15	2013 Animal Incidence (%)	0.510	0.476	0.652	0.324	0.323	0.742	0.214	0.112	0.634	0.741	0.474
d13	2012 Animal Incidence (%)	0.663	0.473	0.198	0.419	0.459	1.133	0.439	0.232	0.754	0.875	0.938
d14	2011 Animal Incidence (%)	0.506	0.481	0.254	0.274	0.307	0.567	0.122	0.187	0.880	0.982	0.449
d34	APT during current month	3.50	1.99	2.38	2.12	4.31	8.10	2.64	2.47	2.97	4.65	3.12
d22	APT since start of year	3.68	2.98	1.66	2.94	4.40	5.73	1.80	1.64	3.52	4.46	5.36
d17	Current 12 month moving average APT	4.13	3.42	1.72	3.02	4.75	5.39	1.94	3.61	4.61	5.25	5.69
d40	2015 APT	4.06	3.37	2.08	2.80	4.31	4.46	1.88	4.51	5.33	5.06	5.38
d32	2014 APT	3.55	2.39	2.18	3.24	2.78	5.24	1.79	1.58	5.08	4.64	3.65
d18	2013 APT	3.27	3.14	4.53	2.20	2.42	4.90	1.64	0.86	3.87	4.33	3.05
d19	2012 APT	4.21	3.17	1.52	2.90	3.37	7.17	3.37	1.68	4.57	4.92	5.67
d42	2011 APT	3.40	3.27	2.00	1.93	2.35	3.98	0.98	1.45	5.24	5.86	3.25
d23	No. negative in contacts since start of year	246	24	10	13	9	8	7	55	4	23	93
d46	No. negative in contacts over last 12 months	638	39	11	23	65	22	10	64	72	72	260
d41	No. negative in contacts during 2015	755	59	10	23	62	37	45	9	73	95	342
d33	No. negative in contacts during 2014	1060	40	10	100	227	93	29	9	201	35	316
d24	No. negative in contacts during 2013	565	44	74	3	18	83	22	0	49	35	237
d25	No. negative in contacts during 2012	1394	9	0	23	35	79	611	1	133	55	448
d43	No. negative in contacts during 2011	484	12	1	13	19	19	40	0	144	179	57
d37	Reactor removal time 2016	8.9	11.0	11.6	8.2	8.9	8.9	8.9	8.2	11.0	8.2	8.2
d36	Reactor removal time 2015	8.9	9.6	9.6	8.9	8.9	8.2	8.9	8.2	9.6	9.6	8.2
d45	Reactor removal time 2014	8.9	9.6	8.9	8.9	8.9	8.9	8.9	8.2	10.3	8.9	8.2
d35	Reactor removal time 2013	8.9	9.6	8.9	8.2	9.6	8.9	9.6	8.9	9.6	9.6	8.2
d47	Reactor removal time 2012	11.6	12.3	12.3	9.6	12.3	10.3	10.3	8.9	11.6	11.6	8.9
D44	Reactor removal time 2011	9.6	13.0	8.2	8.9	8.9	10.3	11.6	8.2	11.6	8.9	8.2

Tuberculosis: number of reactor herds by month and by DVO in 2016 and unique herd breakdowns during the year

2016		DVO_CODE										
Year	Month	Armagh	Ballymena	Coleraine	Dungannon	Enniskillen	L'Derry	Mallusk	Newry	Nt'Ards	Omagh	Total
2016	1	17	14	26	24	17	3	16	19	15	35	186
2016	2	15	8	16	24	14	1	8	9	11	16	122
2016	3	18	9	25	28	15	1	1	19	16	18	150
2016	4	25	12	29	17	24	2	8	26	10	35	188
2016	5	8	3	14	22	16	2	0	13	12	12	102
2016	6	8	5	14	15	11	2	2	9	17	9	92
2016	7											0
2016	8											0
2016	9											0
2016	10											0
2016	11											0
2016	12											0
Total		91	51	124	130	97	11	35	95	81	125	840

Unique Herd Breakdowns		DVO_CODE										
Year	Armagh	Ballymena	Coleraine	Dungannon	Enniskillen	L'Derry	Mallusk	Newry	Nt'Ards	Omagh	Total Herds	
2016	126	68	203	188	121	26	48	151	111	200	1242	

Tuberculosis: number of reactor herds by month and by DVO in 2015 and unique herd breakdowns during the year

2015		DVO_CODE										
Year	Month	Armagh	Ballymena	Coleraine	Dungannon	Enniskillen	L'Derry	Mallusk	Newry	Nt'Ards	Omagh	Total
2015	1	18	17	36	25	19	8	13	21	21	36	214
2015	2	8	15	31	13	19	4	8	22	23	28	171
2015	3	14	6	24	12	18	2	6	24	12	16	134
2015	4	16	9	22	18	26	5	5	23	17	17	158
2015	5	9	3	13	10	20	5	6	16	10	13	105
2015	6	8	2	9	12	15	4	5	7	10	8	80
2015	7	8	2	10	10	12	11	3	25	12	7	100
2015	8	8	7	12	8	10	3	4	26	17	5	100
2015	9	6	4	12	20	12	8	3	13	9	11	98
2015	10	19	6	26	23	17	11	5	29	13	35	184
2015	11	15	7	29	24	22	5	15	20	15	33	185
2015	12	16	10	19	19	10	9	14	19	14	29	159
Total		145	88	243	194	200	75	87	245	173	238	1688

Unique Herd Breakdowns		DVO_CODE										
Year	Armagh	Ballymena	Coleraine	Dungannon	Enniskillen	L'Derry	Mallusk	Newry	Nt'Ards	Omagh	Total Herds	
2015	180	106	318	240	243	84	100	309	224	292	2096	

Tuberculosis: number of reactor herds by month and by DVO in 2014 and unique herd breakdowns during the year

2014		DVO_CODE										
Year	Month	Armagh	Ballymena	Coleraine	Dungannon	Enniskillen	L'Derry	Mallusk	Newry	Nt'Ards	Omagh	Total
2014	1	9	20	22	13	18	9	22	24	13	29	179
2014	2	16	19	18	8	13	4	10	22	11	7	128
2014	3	10	12	12	14	11	3	7	19	14	15	117
2014	4	8	4	12	11	15	3	8	16	15	17	109
2014	5	6	9	5	13	14	2	3	13	15	12	92
2014	6	8	2	6	7	13	1	2	11	2	5	57
2014	7	7	2	4	8	5	2	5	18	10	13	74
2014	8	9	3	8	11	12	1	1	12	9	8	74
2014	9	8	2	17	14	11	0	5	13	13	13	96
2014	10	11	6	20	12	14	4	5	15	13	29	129
2014	11	9	10	35	19	27	6	8	22	22	32	190
2014	12	9	12	33	12	14	8	9	18	15	22	152
Total		110	101	192	142	167	43	85	203	152	202	1397

Unique Herd Breakdowns		DVO_CODE										
Year	Armagh	Ballymena	Coleraine	Dungannon	Enniskillen	L'Derry	Mallusk	Newry	Nt'Ards	Omagh	Total Herds	
2014	136	136	229	181	212	51	103	274	201	246	1769	

A herd is defined as being a TB reactor herd if it had at least one TB reactor animal in that month and no TB reactor animals during the previous 12 months.

A TB unique herd breakdown is defined as a herd which has had at least one TB reactor during the specified calendar year irrespective of any TB reactors during the previous calendar year.

Tuberculosis: number of reactor animals by month and by DVO 2016

2016		DVO_CODE										
Year	Month	Armagh	Ballymena	Coleraine	Dungannon	Enniskillen	L'Derry	Mallusk	Newry	Nt'Ards	Omagh	Total
2016	1	106	41	171	169	100	27	42	140	175	246	1217
2016	2	65	20	77	156	106	17	50	129	72	166	858
2016	3	73	39	75	107	109	11	14	151	74	148	801
2016	4	94	39	191	130	158	19	50	159	106	272	1218
2016	5	76	11	95	90	180	2	29	66	178	133	860
2016	6	23	15	46	62	90	10	16	61	78	57	458
2016	7											0
2016	8											0
2016	9											0
2016	10											0
2016	11											0
2016	12											0
Total		437	165	655	714	743	86	201	706	683	1022	5412

Tuberculosis: number of reactor animals by month and by DVO 2015

2015		DVO_CODE										
Year	Month	Armagh	Ballymena	Coleraine	Dungannon	Enniskillen	L'Derry	Mallusk	Newry	Nt'Ards	Omagh	Total
2015	1	85	78	130	98	129	22	33	125	209	245	1154
2015	2	45	80	116	45	87	29	44	198	132	175	951
2015	3	46	19	120	52	64	7	49	108	59	142	666
2015	4	71	28	83	215	126	39	14	223	141	94	1034
2015	5	51	12	46	45	94	42	33	95	84	150	652
2015	6	94	9	30	40	75	22	10	152	59	51	542
2015	7	19	27	75	170	68	78	40	182	115	124	898
2015	8	150	18	86	52	75	10	10	184	219	29	833
2015	9	22	25	112	91	133	66	32	111	117	165	874
2015	10	92	24	132	120	101	54	11	171	144	171	1020
2015	11	110	24	120	137	123	30	66	175	245	215	1245
2015	12	88	24	70	165	124	48	30	240	82	264	1135
Total		873	368	1120	1230	1199	447	372	1964	1606	1825	11004

Tuberculosis: number of reactor animals by month and by DVO 2014

2014		DVO_CODE										
Year	Month	Armagh	Ballymena	Coleraine	Dungannon	Enniskillen	L'Derry	Mallusk	Newry	Nt'Ards	Omagh	Total
2014	1	53	91	62	42	121	25	65	253	212	162	1086
2014	2	38	56	62	37	66	9	29	157	82	68	604
2014	3	33	51	29	77	106	10	17	114	86	91	614
2014	4	36	10	62	38	144	9	36	132	187	78	732
2014	5	18	23	35	48	70	6	8	114	69	34	425
2014	6	49	44	64	22	94	2	10	74	61	60	480
2014	7	51	17	19	44	66	6	12	157	104	70	546
2014	8	72	11	54	65	131	5	2	152	120	75	687
2014	9	29	10	99	43	119	1	39	95	117	84	636
2014	10	81	12	159	43	77	28	73	122	85	191	871
2014	11	54	45	193	147	181	6	38	220	179	112	1175
2014	12	70	39	184	91	106	16	23	249	88	116	982
Total		584	409	1022	697	1281	123	352	1839	1390	1141	8838

**A TB reactor animal is defined as an animal where the manual interpretation field for a skin test is positive ('P') with the first test date being taken as the time at which the animal became a reactor.
Animals with lesions at routine slaughter ('LRS') are not taken into account.**

Month = June 2016

Ref.		Total	Armagh	Ballymena	Coleraine	Dungannon	Enniskillen	Mallusk	L'derry	Newry	Nt'ards	Omagh
b16	No. herds with any test completed in month	2199	249	92	252	301	238	98	77	387	217	288
b17	No. herds with any test, from start of year	16413	1626	978	1878	2007	2063	1093	582	2635	1392	2159
b29	All herds with any test, from start of year	16930	1646	1020	1970	2079	2108	1136	613	2701	1425	2232
b18	No. herds with any test, from start of year (no cattle)	517	20	42	92	72	45	43	31	66	33	73
b19	No. herds with herd test completed in month	1684	163	66	191	215	189	55	60	342	180	223
b20	No. herds with herd test, from start of year	15513	1496	925	1795	1879	1976	1009	543	2518	1327	2045
b30	All herds with herd test, from start of year	16036	1516	968	1890	1953	2020	1052	574	2585	1360	2118
b21	No. herds with herd test, from start of year (no cattle)	523	20	43	95	74	44	43	31	67	33	73
b22	No. herds with herd test during last 12 months	23601	2323	1410	2595	2878	3087	1656	888	3747	1964	3053
b31	No. herds with herd test during last 13-24 months	23552	2305	1413	2590	2863	3115	1667	888	3708	1918	3085
b39	No. herds with herd test during 2015	23604	2304	1417	2610	2875	3121	1654	873	3748	1939	3063
b32	No. herds with herd test during 2014	23149	2274	1395	2490	2829	3049	1621	890	3658	1892	3051
b28	No. herds with herd test during 2013	22979	2237	1353	2530	2833	3054	1590	873	3618	1863	3028
b23	No. herds with herd test during 2012	23093	2244	1369	2513	2831	3067	1623	869	3638	1880	3059
b24	No. herds with herd test during 2011	23085	2197	1387	2567	2807	3068	1644	881	3668	1807	3059
b25	No. herds with any risk test completed	7770	797	426	1026	931	916	393	239	1241	700	1101
b26	No. herds with herd risk test completed	5606	476	303	767	578	765	203	139	966	567	842
b27	No. herds with restricted herd test completed	2361	250	127	343	310	196	142	85	350	248	310

Month = June 2016

Ref	Total	Armagh	Ballymena	Coleraine	Dungannon	Enniskillen	Mallusk	L'derry	Newry	Nt'ards	Omagh	
c1	Total number of tests in current month	2472	279	98	285	355	255	126	89	432	241	312
c2	Total number of tests from start of year	23963	2502	1386	2880	3150	2695	1625	837	3665	2026	3197
c3	No. tests during the same time period in the previous year	24588	2558	1462	2860	2990	3275	1660	768	3682	2148	3185
c4	% change between years	-2.6	-2.2	-5.5	0.7	5.1	-21.5	-2.2	8.2	-0.5	-6.0	0.4
c5	No. tests in the previous 12 months	44964	4796	2532	5363	5819	5141	2975	1653	6970	3947	5768
c6	No. animal tests in current month	130711	11550	6290	21679	14391	11116	6059	4045	20559	16765	18257
c7	No. animal tests from start of year	1469482	146485	99525	223155	162112	129608	111871	52370	200747	153095	190514
c8	No. animal tests during the same time period in the previous year	1416968	137265	97334	209683	142421	144961	108527	48358	183843	164628	179948
c9	% change between years	3.6	6.3	2.2	6.0	12.1	-11.8	3.0	7.7	8.4	-7.5	5.5
c10	No. animal tests in previous 12 months	2763103	268376	178709	413643	304833	253486	201547	103049	383839	305730	349891
c11	No. cattle eligible for TB testing	1576744	155622	111010	208919	178228	153817	135961	61887	210000	163980	197320
c12	No. cattle herds eligible for TB testing	26003	2580	1548	2855	3133	3344	1854	1008	4141	2142	3398
c13	No. restricted herd tests during month	426	39	26	55	52	43	25	17	59	43	67
c14	No. animals tested	64919	5073	3450	11749	7712	4203	4513	1424	7980	7732	11083
c15	No. herd tests during month	1686	163	66	191	215	189	56	60	342	180	224
c16	No. animals tested	128353	11360	6243	21446	14067	10577	5747	3856	20345	16640	18072
c17	No. individual tests during month	786	116	32	94	140	66	70	29	90	61	88
c18	No. animals tested	2358	190	47	233	324	539	312	189	214	125	185
c23	No. animals TB tested since start of year	1157484	119351	80601	167532	131022	108713	92113	42804	164094	120936	143921
c19	No. animals TB tested in previous 12 months	1694641	177669	119777	232564	205747	168651	146049	68219	237087	180450	217192
c24	No. animals TB tested in previous 13-24 months	1628582	170228	117173	221686	194146	164194	143668	64039	222880	177853	209538
c26	No. animals TB tested in 2015	1662526	173128	118768	230646	200836	169615	145087	67585	230540	180664	213469
c25	No. animals TB tested in 2014	1607660	166774	117083	214490	191534	163019	143992	61765	225643	177960	207187
c22	No. animals TB tested in 2013	1620055	172322	114133	214509	197072	166287	140842	62228	224389	180893	210490
c20	No. animals TB tested in 2012	1643626	171497	112484	213785	196069	168531	143005	64217	229674	181839	219225
c21	No. animals TB tested in 2011	1607171	166267	113201	216348	189655	159143	140627	64863	225656	178272	210299

Month = June 2016

Ref		Total	Armagh	Ballymena	Coleraine	Dungannon	Enniskillen	Mallusk	L'derry	Newry	Nt'ards	Omagh
f1	No. of Officially Tuberculosis Free Herds (OTF)	26990	2638	1676	3021	3171	3439	2066	1155	4291	2022	3511
f2	No. of Officially Tuberculosis Suspended Herds (OTS)	934	152	23	77	123	99	74	15	168	95	108
f3	No. of Officially Tuberculosis Withdrawn Herds (OTW)	1458	166	59	187	231	120	73	29	222	178	193
f4	% herds that are OTF	91.9	89.2	95.3	92.0	90.0	94.0	93.4	96.3	91.7	88.1	92.1
f5	% herds that are OTS	3.2	5.1	1.3	2.3	3.5	2.7	3.3	1.3	3.6	4.1	2.8
f6	% herds that are OTW	5.0	5.6	3.4	5.7	6.6	3.3	3.3	2.4	4.7	7.8	5.1

		Month = February 2016										
		(Data lagged by 4 months)										
Ref		Total	Armagh	Ballymena	Coleraine	Dungannon	Enniskillen	Mallusk	L'derry	Newry	Nt'ards	Omagh
e19	Num. TB culture positive animals that were not TB reactors in last 12 months	698	76	41	104	91	31	40	18	113	116	68
e20	Num. TB culture positive animals that were not TB reactors in last 13-24 months	598	64	37	62	63	38	50	14	108	88	74
e5	Num. TB culture positive animals that were not TB reactors in 2015	676	71	41	95	84	27	38	18	120	112	70
e6	Num. TB culture positive animals that were not TB reactors in 2014	575	68	37	54	66	38	53	12	100	80	67
e2	Num. TB culture positive animals that were not TB reactors in 2013	583	63	33	32	98	28	30	7	131	92	69
e3	Num. TB culture positive animals that were not TB reactors in 2012	600	62	32	48	66	32	31	9	155	91	74
e4	Num. TB culture positive animals that were not TB reactors in 2011	558	69	40	42	47	31	25	5	154	77	68
e21	No. herds with TB culture positive animals that were not TB reactors in last 12 months	454	49	23	68	58	25	29	12	70	75	45
e22	No. herds with TB culture positive animals that were not TB reactors in last 13-24 months	386	46	24	42	44	29	24	12	69	57	39
e11	No. herds with TB culture positive animals that were not TB reactors in 2015	449	50	25	70	55	20	27	12	67	78	45
e12	No. herds with TB culture positive animals that were not TB reactors in 2014	372	47	25	37	48	27	27	10	66	51	34
e8	No. herds with TB culture positive animals that were not TB reactors in 2013	381	50	14	30	46	20	20	5	83	60	53
e9	No. herds with TB culture positive animals that were not TB reactors in 2012	401	46	17	35	48	25	23	9	82	67	49
e10	No. herds with TB culture positive animals that were not TB reactors in 2011	363	48	17	31	32	27	17	3	87	56	45
e23	% of TB animals that were TB culture positive that were not TB reactors in last 12 months	6.0	7.7	13.1	8.5	6.1	2.5	9.4	3.9	5.6	7.1	3.6
e24	% of TB animals that were TB culture positive that were not TB reactors in last 13-24 months	6.1	9.3	8.1	5.1	7.6	2.8	13.0	9.1	5.8	5.8	5.3
e17	% of TB animals that were TB culture positive that were not TB reactors in 2015	5.8	7.5	10.0	7.8	6.4	2.2	9.3	3.9	5.8	6.5	3.7
e18	% of TB animals that were TB culture positive that were not TB reactors in 2014	6.1	10.4	8.3	5.0	8.7	2.9	13.1	8.9	5.2	5.4	5.5
e14	% of TB animals that were TB culture positive that were not TB reactors in 2013	6.6	7.1	4.2	4.4	13.4	2.2	9.0	9.1	8.4	6.4	6.5
e15	% of TB animals that were TB culture positive that were not TB reactors in 2012	5.2	7.1	12.5	5.1	6.8	1.6	4.7	5.7	8.2	5.4	3.5
e16	% of TB animals that were TB culture positive that were not TB reactors in 2011	6.4	7.9	12.2	6.6	7.5	3.3	12.8	4.0	7.2	4.2	6.7

		Month = February 2016										
		(Data lagged by 4 months)										
Ref		Total	Armagh	Ballymena	Coleraine	Dungannon	Enniskillen	Mallusk	L'derry	Newry	Nt'ards	Omagh
g31	No. of confirmed TB reactors during last 12 months	5110	418	175	632	649	528	199	278	749	652	830
g32	No. of confirmed TB reactors during last 13-24 months	4724	347	231	671	427	613	146	95	723	768	703
g5	No. of confirmed TB reactors 2015	5304	428	228	658	591	561	194	284	782	718	860
g6	No. of confirmed TB reactors 2014	4346	294	229	591	392	561	156	84	725	722	592
g2	No. of confirmed TB reactors 2013	3765	377	422	373	255	520	116	40	541	636	485
g3	No. of confirmed TB reactors 2012	4836	339	131	416	429	821	241	83	698	730	948
g4	No. of confirmed TB reactors 2011	3867	382	134	294	230	495	72	73	809	818	560
g33	Total animals with confirmed TB during last 12 months	5808	494	216	736	740	559	239	296	862	768	898
g34	Total animals with confirmed TB in last 13-24 months	5322	411	268	733	490	651	196	109	831	856	777
g11	Total animals with confirmed TB in 2015	5980	499	269	753	675	588	232	302	902	830	930
g12	Total animals with confirmed TB in 2014	4921	362	266	645	458	599	209	96	825	802	659
g8	Total animals with confirmed TB in 2013	4348	440	455	405	353	548	146	47	672	728	554
g9	Total animals with confirmed TB in 2012	5436	401	163	464	495	853	272	92	853	821	1022
g10	Total animals with confirmed TB in 2011	4425	451	174	336	277	526	97	78	963	895	628
g35	Confirmed TB animal prevalence in last 12 months (%)	0.346	0.282	0.181	0.318	0.369	0.331	0.164	0.434	0.370	0.426	0.417
g36	Confirmed TB animal prevalence in last 13-24 months (%)	0.328	0.241	0.228	0.336	0.252	0.399	0.135	0.181	0.369	0.482	0.375
g17	Confirmed TB animal prevalence in 2015 (%)	0.360	0.288	0.226	0.326	0.336	0.347	0.160	0.447	0.391	0.459	0.436
g18	Confirmed TB animal prevalence in 2014 (%)	0.306	0.217	0.227	0.301	0.239	0.367	0.145	0.155	0.366	0.451	0.318
g14	Confirmed TB animal prevalence in 2013 (%)	0.268	0.255	0.399	0.189	0.179	0.330	0.104	0.076	0.299	0.402	0.263
g15	Confirmed TB animal prevalence in 2012 (%)	0.331	0.234	0.145	0.217	0.252	0.506	0.190	0.143	0.371	0.452	0.466
g16	Confirmed TB animal prevalence in 2011 (%)	0.275	0.271	0.154	0.155	0.146	0.331	0.069	0.120	0.427	0.502	0.299
g37	No. herds with confirmed TB in last 12 months	1881	170	104	275	231	195	102	66	258	213	267
g38	No. herds with confirmed TB in last 13-24 months	1706	133	112	227	176	197	74	55	262	213	257
g23	No. herds with confirmed TB in 2015	1935	163	103	296	222	201	101	77	271	228	273
g24	No. herds with confirmed TB in 2014	1606	126	123	199	171	181	85	50	253	195	223
g20	No. herds with confirmed TB in 2013	1648	157	120	174	144	210	77	29	293	206	238
g21	No. herds with confirmed TB in 2012	1739	148	69	183	161	223	77	52	292	230	304
g22	No. herds with confirmed TB in 2011	1392	138	63	160	116	177	43	38	277	184	196
g39	Confirmed TB herd prevalence in last 12 months (%)	8.02	7.41	7.41	10.61	8.10	6.30	6.20	7.62	6.91	11.04	8.78
g40	Confirmed TB herd prevalence in last 13-24 months (%)	7.34	5.86	8.03	8.92	6.19	6.41	4.56	6.26	7.18	11.19	8.43

g29	Confirmed TB herd prevalence in 2015 (%)	8.20	7.07	7.27	11.34	7.72	6.44	6.11	8.82	7.23	11.76	8.91
g30	Confirmed TB herd prevalence in 2014 (%)	6.94	5.54	8.82	7.99	6.04	5.94	5.24	5.62	6.92	10.31	7.31
g26	Confirmed TB herd prevalence in 2013 (%)	7.17	7.02	8.87	6.88	5.08	6.88	4.84	3.32	8.10	11.06	7.86
g27	Confirmed TB herd prevalence in 2012 (%)	7.53	6.60	5.04	7.28	5.69	7.27	4.74	5.98	8.03	12.23	9.94
g28	Confirmed TB herd prevalence in 2011 (%)	6.03	6.28	4.54	6.23	4.13	5.77	2.62	4.31	7.55	10.18	6.41

Explanatory Comments for Tuberculosis Statistics - B. Testing Herds

Ref	Data Title	Explanation
B16	No. herds with any test completed in month	Test of any disease status and size (herd or animal-level). Tests with no animals are excluded.
B17	No. herds with any test, from start of year	Test of any disease status and size (herd or animal-level) carried out on a herd since 1st January. Tests with no animals are excluded.
B29	All herds with any test, from start of year	Skin test of any disease status and size (herd or animal-level) carried out on a herd since 1st January. Tests with no animals are included.
B18	No. herds with any test, from start of year (no cattle)	Herd or individual test of any disease status (routine, risk or restricted) where no cattle were recorded at all such tests since 1st January.
B19	No. herds with herd test completed in month	Herd level test of any disease status (routine, risk or restricted) completed during the above month. Tests with no animals are excluded.
B20	No. herds with herd test, from start of year	Herd level test of any disease status (routine, risk or restricted) completed since 1st January. Tests with no animals are excluded.
B30	All herds with herd test, from start of year	Herd level test of any disease status (routine, risk or restricted) completed since 1st January. Tests with no animals are included.
B21	No. herds with herd test, from start of year (no cattle)	Herd level test of any disease status (routine, risk or restricted) where no cattle were recorded at all such herd tests since 1st January.
B22	No. herds with herd test during last 12 months	Herd level test of any disease status (routine, risk or restricted) completed in the 12 month period from the above month. Tests with no animals are excluded.
B31	No. herds with herd test during last 13-24 months	Herd level test of any disease status (routine, risk or restricted) completed in the 13-24 months from the above month. Tests with no animals are excluded.
B39	No. herds with herd test during the year	Herd level test of any disease status (routine, risk or restricted) completed in the calendar year. Tests with no animals are excluded.
B32	No. herds with herd test during the year	Herd level test of any disease status (routine, risk or restricted) completed in the calendar year. Tests with no animals are excluded.
B28	No. herds with herd test during the year	Herd level test of any disease status (routine, risk or restricted) completed in the calendar year. Tests with no animals are excluded.
B23	No. herds with herd test during the year	Herd level test of any disease status (routine, risk or restricted) completed in the calendar year. Tests with no animals are excluded.
B24	No. herds with herd test during the year	Herd level test of any disease status (routine, risk or restricted) completed in the calendar year. Tests with no animals are excluded.
B25	No. herds with any risk test completed	Herd has had a herd or individual level risk test since start of calendar year and number tested > 0.
B26	No. herds with herd risk test completed	Herd has had a herd level risk test since start of calendar year and number tested > 0.
B27	No. herds with restricted herd test completed	Herd has had a restricted herd test (RHT, RH1, RH2) since start of calendar year and number tested > 0.

Explanatory Comments for Tuberculosis Statistics - C. Testing Animals

Ref	Data Title	Explanation
C1	Total number of tests in current month	Number of herds and individual tests performed in the month stated above. Tests with no animals are excluded.
C2	Total number of tests from start of year	From 1st January. Tests with no animals are excluded.
C3	No. tests during the same time period in the previous year	From 1st January of previous year. Tests with no animals are excluded.
C4	% change between years	Difference between the number of tests carried out during the current year and the number carried out in the previous expressed as a percentage.
C5	No. tests in the previous 12 months	Last 12 month period from the above month. Tests with no animals are excluded.
C6	No. animal tests in current month	Animal test = a count of the number of animals tested within each herd or individual test. Some animals may have been tested multiple times during the year.
C7	No. animal tests from start of year	Number of animal tests carried out since 1st January.
C8	No. animal tests during the same time period in the previous year	Number of animal tests carried out from 1st January in the previous year over the same time interval as recorded for the current year.
C9	% change between years	Difference between the number of animal tests during the current year and the number carried out in the previous expressed as a percentage.
C10	No. animal tests in previous 12 months	Last 12 month period from the above month.
C11	No. cattle eligible for TB testing	Based on the average number of animals presented at TB herd tests over last 4 years.
C12	No. cattle herds eligible for TB testing	Based on cattle being presented for a TB herd tests over last 4 years. Herds with '0' cattle are excluded.

C13	No. restricted herd tests during month	All restricted herd tests (RHT, RH1 and RH2) carried out during the above month.
C14	No. animals tested	Total of the animals reported as being tested within restricted herd tests (RHT, RH1, RH2) during the above month.
C15	No. herd tests during month	Total of the animals reported as being tested within all herd tests during the above month.
C16	No. animals tested	Total of the animals reported as being tested within all herd tests during the above month.
C17	No. individual tests during month	Total of the animals reported as being tested within all individual tests during the above month.
C18	No. animals tested	Total of the animals reported as being tested within all individual tests during the above month.
C23	No. animals TB tested since start of year	Animals identified as having had at least one TB skin test since the start of the calendar year. Due to the same animals being sampled in different DVO areas, the 'Total' is not the sum of the DVO figures.
C19	No. animals TB tested in previous 12 months	Animals identified as having had at least one TB skin test during the last 12 month period from the above month. Due to the same animals being sampled in different DVO areas, the 'Total' is not the sum of the DVO figures.
C24	No. animals TB tested in previous 13-24 months	Animals identified as having had at least one TB skin test during the last 13-24 months from the above month. Due to the same animals being sampled in different DVO areas, the 'Total' is not the sum of the DVO figures.
C26	No. animals TB tested in the year	Animals identified as having had at least one TB skin test during the calendar year. Due to the same animals being sampled in different DVO areas, the 'Total' is not the sum of the DVO figures.
C25	No. animals TB tested in the year	Animals identified as having had at least one TB skin test during the calendar year. Due to the same animals being sampled in different DVO areas, the 'Total' is not the sum of the DVO figures.
C22	No. animals TB tested in the year	Animals identified as having had at least one TB skin test during the calendar year. Due to the same animals being sampled in different DVO areas, the 'Total' is not the sum of the DVO figures.
C20	No. animals TB tested in the year	Animals identified as having had at least one TB skin test during the calendar year. Due to the same animals being sampled in different DVO areas, the 'Total' is not the sum of the DVO figures.
C21	No. animals TB tested in the year	Animals identified as having had at least one TB skin test during the calendar year. Due to the same animals being sampled in different DVO areas, the 'Total' is not the sum of the DVO figures.
Explanatory Comments for Tuberculosis Statistics - D. Results		
Ref	Data Title	Explanation
D1	No. of herds with TB reactors during month	A herd is included in this figure if the herd number had a TB skin test reactor during the above month.
D2	No. of new reactor herds during month	A herd is defined as being a TB reactor herd if it had at least one TB reactor animal in that month and no TB reactor animals during the previous 12 months.
D3	No. of new reactor herds since start of year	= Since 1st January
D4	No. of new reactor herds in the previous 12 months	Last 12 month period from the above month.
D26	No. of new reactor herds in previous 13-24 months	Last 13-24 month period from the above month.
D5	No. of TB reactor animals during month	A TB reactor animal is defined as an animal where the manual interpretation field for a skin test is positive ('P') with the first test date being taken as the time at which the animal became a reactor. Currently animals with lesions at routine slaughter (*LRS*) are not taken into account.
D6	No. of TB reactor animals since start of year	= Since 1st January
D7	No. of reactor animals in the previous 12 months	Last 12 month period from the above month.
D27	No. of reactor animals in previous 13-24 months	Last 13-24 month period from the above month.
D20	Cumulative herd incidence in year (%)	Number of NEW reactor herds since the start of the calendar year as a proportion of cattle herds which have presented cattle for a TB herd test during the same time period.
D9	Annual herd incidence over the last 12 months (%)	Number of NEW reactor herds during the last 12 months as a proportion of cattle herds which have presented cattle for a TB herd test during the same time period.
D28	Annual herd incidence over the last 13-24 months (%)	Number of NEW reactor herds during the last 13-24 months as a proportion of cattle herds which have presented cattle for a TB herd test during the same time period.
D38	In-year Herd Incidence (%)	Number of NEW reactor herds during the year as a proportion of cattle herds which have presented cattle for a TB herd test during the same time period.
D30	In-year Herd Incidence (%)	Number of NEW reactor herds during the year as a proportion of cattle herds which have presented cattle for a TB herd test during the same time period.
D16	In-year Herd Incidence (%)	Number of NEW reactor herds during the year as a proportion of cattle herds which have presented cattle for a TB herd test during the same time period.
D10	In-year Herd Incidence (%)	Number of NEW reactor herds during the year as a proportion of cattle herds which have presented cattle for a TB herd test during the same time period.
D11	In-year Herd Incidence (%)	Number of NEW reactor herds during the year as a proportion of cattle herds which have presented cattle for a TB herd test during the same time period.
D21	Cumulative animal incidence in year (%)	Number of reactor animals during the above month as a proportion of cattle which have been presented for a TB test during the same time period.
D12	Annual animal incidence over the last 12 months (%)	Number of reactor animals during the last 12 months as a proportion of cattle which have been presented for a TB test during the same time period.
D29	Annual animal incidence over the last 13-24 months (%)	Number of reactor animals during the last 13-24 months as a proportion of cattle which have been presented for a TB test during the same time period.

D39	In year Animal Incidence (%)	Number of reactor animals during the year as a proportion of cattle which have been presented for a TB herd test during the same time period.
D31	In year Animal Incidence (%)	Number of reactor animals during the year as a proportion of cattle which have been presented for a TB herd test during the same time period.
D15	In year Animal Incidence (%)	Number of reactor animals during the year as a proportion of cattle which have been presented for a TB herd test during the same time period.
D13	In year Animal Incidence (%)	Number of reactor animals during the year as a proportion of cattle which have been presented for a TB herd test during the same time period.
D14	In year Animal Incidence (%)	Number of reactor animals during the year as a proportion of cattle which have been presented for a TB herd test during the same time period.
D34	APT during current month	= The reactor disclosure rate per 1,000 animal tests current calendar month.
D22	APT since start of year	The reactor disclosure rate per 1,000 animal tests since the start of the calendar year.
D17	Current 12 month moving average APT	The reactor disclosure rate per 1,000 animal tests. Current refers to the rate over the last 12 months.
D42	In year APT	The reactor disclosure rate per 1,000 animal tests during the calendar year.
D40	In year APT	The reactor disclosure rate per 1,000 animal tests during the calendar year.
D32	In year APT	The reactor disclosure rate per 1,000 animal tests during the calendar year.
D18	In year APT	The reactor disclosure rate per 1,000 animal tests during the calendar year.
D19	In year APT	The reactor disclosure rate per 1,000 animal tests during the calendar year.
D23	No. negative in contacts since start of year	Number of animals taken as negative in contacts since the start of the year.
d46	No. Negative in contacts over last 12 months (%)	= Number of negative in contacts during the last 12 months
D43	No. negative in contacts during the year	Number of animals taken as negative in contacts during the year.
D41	No. negative in contacts during the year	Number of animals taken as negative in contacts during the year.
D33	No. negative in contacts during the year	Number of animals taken as negative in contacts during the year.
D24	No. negative in contacts during the year	Number of animals taken as negative in contacts during the year.
D25	No. negative in contacts during the year	Number of animals taken as negative in contacts during the year.
D37	Reactor removal time during the year	Figures given are median values for working days estimated from calendar days (calendar days multiplied by 0.685). Reactors which are not yet slaughtered or where they they were first declared as reactors at slaughter are excluded.
D45	Reactor removal time during the year	Figures given are median values for working days estimated from calendar days (calendar days multiplied by 0.685). Reactors which are not yet slaughtered or where they they were first declared as reactors at slaughter are excluded.
D35	Reactor removal time during the year	Figures given are median values for working days estimated from calendar days (calendar days multiplied by 0.685). Reactors which are not yet slaughtered or where they they were first declared as reactors at slaughter are excluded.
D44	Reactor removal time during the year	Figures given are median values for working days estimated from calendar days (calendar days multiplied by 0.685). Reactors which are not yet slaughtered or where they they were first declared as reactors at slaughter are excluded.
D36	Reactor removal time during the year	Figures given are median values for working days estimated from calendar days (calendar days multiplied by 0.685). Reactors which are not yet slaughtered or where they they were first declared as reactors at slaughter are excluded.

g35	Confirmed TB animal prevalence in last 12 months (%)	Number of TB reactors that were confirmed during the last 12 months by the presence of visible lesions at slaughter and/or by laboratory confirmation (histopathology and/or culture) plus the number of other animals where M. bovis was cultured from TB-like lesions found at slaughter during the last 12 months that were not identified as TB reactor animals divided by the number of animals tuberculin tested during the last 12 months expressed as a %
g36	Confirmed TB animal prevalence in last 13-24 months (%)	Number of TB reactors that were confirmed during the last 13-24 months by the presence of visible lesions at slaughter and/or by laboratory confirmation (histopathology and/or culture) plus the number of other animals where M. bovis was cultured from TB-like lesions found at slaughter during the last 13-24 months that were not identified as TB reactor animals divided by the number of animals tuberculin tested during the last 13-24 months expressed as a %
g18	Confirmed TB animal prevalence in year (%)	Number of TB reactors that were confirmed during the year by the presence of visible lesions at slaughter and/or by laboratory confirmation (histopathology and/or culture) plus the number of other animals where M. bovis was cultured from TB-like lesions found at slaughter during the year that were not identified as TB reactor animals divided by the number of animals tuberculin tested during the year expressed as a %
g14	Confirmed TB animal prevalence in year (%)	Number of TB reactors that were confirmed during the year by the presence of visible lesions at slaughter and/or by laboratory confirmation (histopathology and/or culture) plus the number of other animals where M. bovis was cultured from TB-like lesions found at slaughter during the year that were not identified as TB reactor animals divided by the number of animals tuberculin tested during the year expressed as a %
g15	Confirmed TB animal prevalence in year (%)	Number of TB reactors that were confirmed during the year by the presence of visible lesions at slaughter and/or by laboratory confirmation (histopathology and/or culture) plus the number of other animals where M. bovis was cultured from TB-like lesions found at slaughter during the year that were not identified as TB reactor animals divided by the number of animals tuberculin tested during the year expressed as a %
g16	Confirmed TB animal prevalence in year (%)	Number of TB reactors that were confirmed during the year by the presence of visible lesions at slaughter and/or by laboratory confirmation (histopathology and/or culture) plus the number of other animals where M. bovis was cultured from TB-like lesions found at slaughter during the year that were not identified as TB reactor animals divided by the number of animals tuberculin tested during the year expressed as a %
g17	Confirmed TB animal prevalence in year (%)	Number of TB reactors that were confirmed during the year by the presence of visible lesions at slaughter and/or by laboratory confirmation (histopathology and/or culture) plus the number of other animals where M. bovis was cultured from TB-like lesions found at slaughter during the year that were not identified as TB reactor animals divided by the number of animals tuberculin tested during the year expressed as a %
g37	No. herds with confirmed TB in last 12 months	Herds that had at least one confirmed TB animal during the last 12 months.
g38	No. herds with confirmed TB in last 13-24 months	Herds that had at least one confirmed TB animal during the last 13-24 months.
g24	No. herds with confirmed TB in year	Herds that had at least one confirmed TB animal during the year.
g20	No. herds with confirmed TB in year	Herds that had at least one confirmed TB animal during the year.
g21	No. herds with confirmed TB in year	Herds that had at least one confirmed TB animal during the year.
g22	No. herds with confirmed TB in year	Herds that had at least one confirmed TB animal during the year.
g23	No. herds with confirmed TB in year	Herds that had at least one confirmed TB animal during the year.
g39	Confirmed TB herd prevalence in last 12 months (%)	Number of herds that had at least one confirmed TB animal during the last 12 months divided the number of herds that presented cattle at a TB herd test expressed as a %.
g40	Confirmed TB herd prevalence in last 13-24 months (%)	Number of herds that had at least one confirmed TB animal during the last 13-24 months divided the number of herds that presented cattle at a TB herd test expressed as a %.
g30	Confirmed TB herd prevalence in year (%)	Number of herds that had at least one confirmed TB animal during the year divided the number of herds that presented cattle at a TB herd test expressed as a %.
g26	Confirmed TB herd prevalence in year (%)	Number of herds that had at least one confirmed TB animal during the year divided the number of herds that presented cattle at a TB herd test expressed as a %.
g27	Confirmed TB herd prevalence in year (%)	Number of herds that had at least one confirmed TB animal during the year divided the number of herds that presented cattle at a TB herd test expressed as a %.
g28	Confirmed TB herd prevalence in year (%)	Number of herds that had at least one confirmed TB animal during the year divided the number of herds that presented cattle at a TB herd test expressed as a %.
g29	Confirmed TB herd prevalence in year (%)	Number of herds that had at least one confirmed TB animal during the year divided the number of herds that presented cattle at a TB herd test expressed as a %.