

## BEEF SIRE CALF REGISTRATIONS INCREASE

**B**EEF sired calf registrations in NI continue to follow a seasonal pattern as outlined in Figure 1 with calf registrations increasing in the spring and early summer to suit our grass based production systems. As indicated in the chart beef sired calf registrations during the first six months of 2016 were higher than the corresponding months in 2015.

The most popular beef sires used in NI continue to be Limousin and Charolais which accounted for 31.5 per cent and 27.7 per cent of beef sired calf registrations respectively during the first half of 2016. The third most popular beef sire utilised in NI during 2016 to date has been Aberdeen Angus with a total of 42,317 Aberdeen Angus calves registered. These accounted for 19.2 per cent of total beef sired calf registrations during 2016 to date.

Beef sired calf registrations in NI during June 2016 totalled 42,676 head, a 2.1 per cent increase from June 2015 levels when 41,797 beef sired calves were registered. This takes the number of beef sired registrations to 239,669 head for the year to date, a 16 per cent increase from the corresponding period in 2015 when 206,747 beef sired calves were registered.

This 16 per cent increase in registrations accounts for an additional 32,922 beef sired calves on NI farms

during the first half of 2016 when compared to year earlier levels. This notable increase in beef sired registrations can be attributed to a number of factors.

The DAERA December 2015 Agricultural Survey recorded a three per cent increase in suckler cow numbers on NI farms to 261,000 head while there was also 46,700 beef heifers on NI farms in calf with their first calf in December 2015, a one per cent increase from year earlier levels. These will have both contributed to the increase in beef sired calf registrations.

In addition to this the December 2015 Agricultural Survey also recorded a two per cent increase in the number of dairy cows on NI farms to a total of 313,600 head. Analysis of calf registration data for the year to date has indicated that a higher proportion of these dairy origin cows were served using beef sires when compared to year earlier levels. In 2015 37 per cent of all calf registrations to dairy cows were beef sired and this increased to 43 per cent in the 2016 period.

A total of 67,607 beef sired calves were registered to dairy origin cows during the first half of 2016 and these accounted for 28.2 per cent of total beef sired calf registrations. This was a notable increase from the 53,333 beef sired calves registered to dairy cows during the corresponding period in

2015 when beef cross calves accounted for 25.8 per cent of total beef sired calf registrations.

This increase by 14,274 head accounts for a 27 per cent increase in the number of beef sired registrations to dairy cows year on year. By comparison the number of dairy sired calves registered to dairy cows during the first half of 2016 totalled 91,692 head, a two per cent decline from the 93,743 head registered during the 2015 period.

Figure 2 provides a breakdown of the beef sired calves registered to dairy cows during the first six months of 2016 compared to the corresponding period in 2015. As indicated in the chart the beef sires used on dairy cows are dominated by six breeds, namely Aberdeen Angus, Limousin, Hereford, Belgian Blue, Simmental and Charolais. The most popular beef breed bulls used on dairy cows were unchanged between 2015 and 2016 and between them these six most popular breeds accounted for 94 per cent of all beef sired registrations to dairy cows in the first half of 2016.

The number of beef sired calves registered to dairy cows recorded an increase for each of the six most popular breeds during the 2016 period when compared to year earlier levels although the proportion of beef sired calves within each breed remained almost unchanged year on year.

Figure 1: Monthly beef sired calf registrations in NI 2014-2016

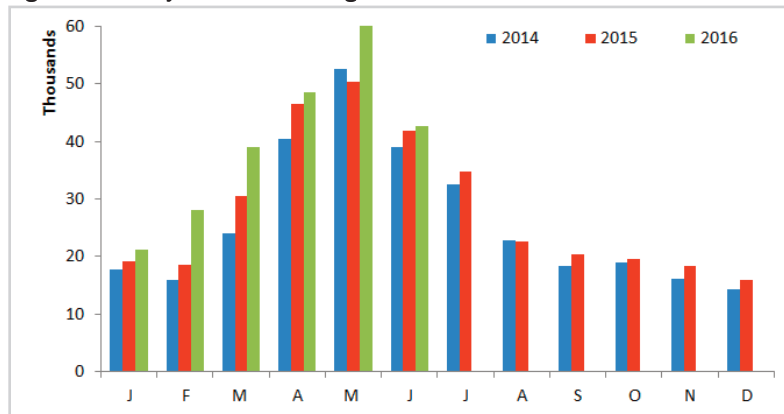
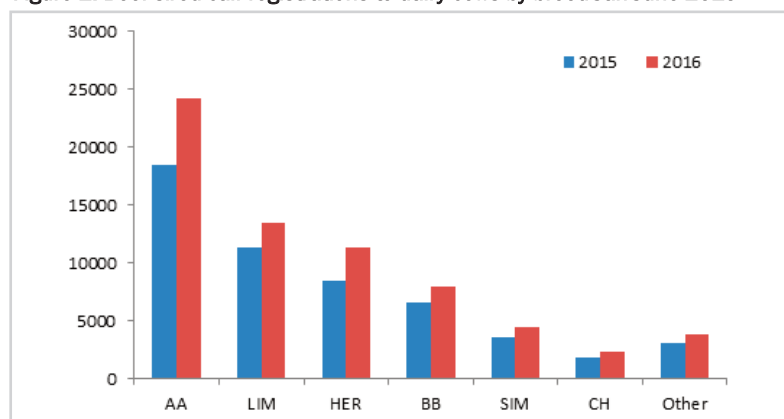


Figure 2: Beef sired calf registrations to dairy cows by breed Jan-June 2016



In terms of numbers the biggest increase recorded during 2016 to date was for Aberdeen Angus cross calves with an additional 5,686 Aberdeen Angus calves registered to dairy cows during the first half of 2016 taking total registrations to 24,202 head. Meanwhile an additional 2,909 Hereford cross calves were registered to dairy cows during 2016 to date taking total registrations to 11,371 head.

## NI BEEF PERFORMANCE INDICATORS JUNE 2016

**T**ABLE 1 outlines key performance indicators for the NI beef industry during June 2016 and provides a useful comparison with year earlier levels.

During June 2016 the average prime cattle price in NI was 316.7p/kg, 0.6p/kg lower than the corresponding month in 2015 when the average price was 317.3p/kg. Meanwhile the R3 steer price in NI during June 2016 was 327p/kg, 1p/kg lower than June 2015 levels when the R3 steer price was 328p/kg.

In GB the average R3 steer price during June 2016 was 331.8p/kg compared to 340.9p/kg in June 2015. This decrease of 9.1p/kg represents a 2.7 per cent decline year on year. The differential in prices between NI and GB narrowed from 12.9p/kg in June 2015 to 4.8p/kg in June 2016.

In ROI during June 2016 the average R3 steer price was the equivalent of 316.5p/kg compared to 299.3p/kg in

June 2015. This increase by 17.2p/kg accounts for a 5.7 per cent increase year on year. In euro terms however the R3 steer price in ROI has remained fairly steady year on year and it has been the strengthening in euro against sterling that has resulted in the increase in deadweight prices in sterling terms. In June 2015 €1=72.1p and this strengthened to €1= 79.1p during June 2016.

Prime cattle throughput in NI during June 2016 totalled 28,904 head, a 9.9 per cent increase from the 26,303 head killed in local plants during June 2015. Cow slaughterings in NI during June 2016 totalled 8,391 head compared to 6,418 head in June 2015 accounting for a 30.7 per cent increase year on year.

The average carcass weight of prime cattle during June 2016 was 339kg, almost unchanged from June 2015 when the average carcass weight was 338kg. Cow carcass weights also remained almost unchanged year on year with an average carcass weight

of 311kg during June 2016.

Imports of cattle for direct slaughter in NI plants during June 2016 totalled 1,166 head, a notable decline from the 2,420 prime cattle imported during June 2015. Meanwhile exports for direct slaughter decreased to 1,302 head in June 2016 from 1,713 head in June 2015.

The number of beef sired cattle on NI farms aged 12-30 months totalled 415,899 head during June 2016, a 4.2 per cent increase from June 2015 levels. The number of dairy sired male cattle on NI farms has also increased with 40,406 head on NI farms in June 2016, a 6.3 per cent increase from June 2015 levels.

As outlined in the article above beef sired calf registrations during June 2016 totalled 42,676 head, a 2.1 per cent increase from June 2015 levels while the number of dairy sired male calf registrations was back by 13.9 per cent to 4,596 head,

Table 1: NI Beef Industry Key Performance Indicators (June Snapshot)

	Jun-15	Jun-16	% Change
<b>Finished Cattle Prices (p/kg)</b>			
Average Prime Cattle Price	317.3	316.7	-0.2%
Average Cow Price	235.1	230.2	-2.1%
Average R3 Steer Price (NI)	328.0	327.0	-0.3%
Average R3 Steer Price (ROI)	299.3	316.5	5.7%
Average R3 Steer Price (GB)	340.9	331.8	-2.7%
<b>Slaughterings</b>			
Total Clean Slaughterings (Head)	26,303	28,904	9.9%
Total Cow Slaughterings (Head)	6,418	8,391	30.7%
Average Clean Carcase Weight (kg)	338	339	0.3%
Average Cow Carcase Weight (kg)	310	311	0.2%
<b>Trade (Head)</b>			
Live Imports for Direct Slaughter	2,420	1,166	-51.8%
Live Exports for Direct Slaughter	1,713	1,302	-24.0%
<b>Availability (Head)</b>			
No. Cattle on the Ground*	437,113	456,305	4.4%
Beef Sired	399,087	415,899	4.2%
Dairy Sired (Male Only)	38,026	40,406	6.3%
<b>Calf Births Registrations (Head)</b>			
Calf Births	47,138	47,272	0.3%
Beef Sired	41,797	42,676	2.1%
Dairy Sired (Male Only)	5,341	4,596	-13.9%
<b>Euro / Stg Exchange Rate (€ / £)</b>	72.1	79.1	9.7%
* Aged between 12-30 mths (Beef + Dairy) All NI Figures Unless Otherwise Stated			

# WEEKLY BEEF & LAMB MARKETS



## CATTLE TRADE

### NI FACTORY QUOTES FOR CATTLE

(P/KG DW)	This Week 04/07/16	Next Week 11/07/16
<b>Prime</b>		
U-3	322 - 328p	322 - 328p
R-3	316 - 322p	316 - 322p
O+3	310 - 316p	310 - 316p
P+3	260 - 276p	260 - 276p
Including bonus where applicable		
<b>Cows</b>		
O+3 & better	238 - 250p	238 - 250p
Steakers	140 - 170p	140 - 170p
Blues	120 - 130p	120 - 130p

Cow quotes vary depending on weight and grade.  
Pricing policies vary from plant to plant. Producers are advised to check pricing policies before presenting cattle for slaughter.

### REPORTED COW PRICES NI - P/KG

w/e 02/07/16	Wgt <220kg	Wgt 220- 250kg	Wgt 250- 280kg	Wgt >280kg
P1	149.0	161.9	170.5	191.6
P2	160.9	182.8	200.8	222.1
P3	197.4	204.8	222.2	232.8
O3	183.3	226.4	237.9	247.3
O4	-	-	243.3	250.9
R3	-	-	-	266.5

### REPORTED NI CATTLE PRICES - P/KG

W/E 02/07/16	Steers	Heifers	Young Bulls
U3	331.7	334.8	324.2
R3	327.7	327.8	322.9
O+3	318.0	318.2	315.3

## SHEEP TRADE

### SHEEP QUOTES

(P/Kg DW)	This Week 04/07/16	Next Week 11/07/16
Lambs	395-405 > 21kg	385-390 > 21kg

### REPORTED SHEEP PRICES

(P/KG)	W/E 18/06/16	W/E 25/06/16	W/E 02/07/16
NI Lambs L/W	341.5	357.2	366.9
NI Lambs D/W	382.2	367.8	398.0
GB Lambs D/W	412.5	397.9	409.9
ROI D/W	380.8	365.4	432.4

### Deadweight Cattle Trade

QUOTES from the major NI processing plants this week for in spec U-3 grade prime cattle remained steady ranging from 322-328p/kg with the majority of plants quoting in the region of 324-326p/kg. Quotes for good quality O+3 grade cows also remained steady at 238-245p/kg across the plants. Similar quotes are expected for all types of cattle early next week.

Prime cattle throughput in NI last week totalled 5,692 head, similar to the previous week when 5,738 prime cattle were slaughtered locally. In the corresponding week in 2015 a total of 5,437 prime cattle were killed in NI plants. Meanwhile cow throughput in NI last week totalled 1,889 head, a decrease from the previous week when 1,963 cows were slaughtered in NI however an increase from the corresponding week in 2015 when 1,526 cows were killed locally.

Imports of prime cattle from ROI for direct slaughter in NI last week totalled 61 head and accounted for one per cent of the total NI prime cattle kill. In the same week in 2015 a total of 601 prime cattle were imported from ROI for direct slaughter in NI plants accounting for 11 per cent of the total NI prime cattle kill. Exports of prime cattle from NI to ROI for direct slaughter last week totalled 89 head with a further 65 prime cattle exported from NI to GB for direct slaughter. Meanwhile 28 cows were imported from ROI for direct slaughter in NI last week compared to 168 cows imported from ROI during the same week in 2015. Exports of cows from NI for direct slaughter to ROI last week totalled 162 head with a further 8 cows exported from NI to GB for slaughter.

The average steer price in NI last week was back by 2.3p/kg to 318.4p/kg while the R3 steer price was back by 1.2p/kg to 329.3p/kg. The average heifer price in NI last week decreased by 1.6p/kg to 320.6p/kg while the R3 heifer price decreased by 0.8p/kg to 329.2p/kg. The average cow price in NI last week recorded a decrease of 3.2p/kg to 231.1p/kg while the O3 cow price was back by 1.8p/kg to 245.6p/kg.

In GB last week the average steer price was up by 2.8p/kg to 326.7p/kg while the R3 steer price increased by 1.3p/kg to 335p/kg. The differential in R3 steer prices last week between NI and GB was 5.7p/kg which is the equivalent of £19 on a 330kg carcass. The average heifer price in GB last week decreased by almost a penny to 328.8p/kg while the R3 heifer price was up by 0.4p/kg to 336.5p/kg. This puts the differential in R3 heifer prices last week between NI and GB at 7.3p/kg which is the equivalent of £24 on a 330kg carcass.

The deadweight cattle trade in ROI last week declined in euro terms but a sharp rise in the value of the euro against sterling meant deadweight prices increased notably in sterling terms. The R3 steer price in ROI last week was the equivalent of 327.8p/kg, up by 16.6p/kg from the previous week while the R3 heifer price in ROI was the equivalent of 339.3p/kg, up by 17.9p/kg from the previous week. The O3 cow price in ROI last week was the equivalent of 251.1p/kg, which puts it 5.5p/kg higher than the equivalent price in NI.

### Deadweight Sheep Trade

QUOTES for R3 grade lamb this week ranged from 385-390p/kg up to 21kg. The plants have reported an increase in the number of lambs coming forward for slaughter with lamb throughput last week totalling 10,597 head, the highest weekly throughput for the year to date. Exports of sheep from NI to ROI for direct slaughter last week totalled 6,620 head, compared to 2,990 head in the same week last year. The average deadweight lamb price in NI last week was up by 30.2p/kg to 398p/kg while in ROI the average deadweight lamb price rose sharply to the equivalent of 432.4p/kg.

### This week's marts

THE live lamb trade remained fairly steady this week with marts reporting increased numbers passing through many of the sale rings. In Swatragh on Saturday 895 lambs sold from 359-428p/kg compared to 635 lambs the previous week selling from 350-395p/kg. In Saintfield this week 707 lambs sold from 344-390p/kg compared to 844 lambs the previous week selling from 365-411p/kg. In Ballymena last week 1,437 lambs sold from 300-404p/kg compared to 1,156 lambs the previous week selling from 350-404p/kg. In Armoys this week 584 lambs sold from 340-393p/kg compared to 464 lambs the previous week selling from 370-398p/kg. Prices for cull ewes generally ranged from £80-£109 with a top reported price of £119 in Markethill on Wednesday.

### LAST WEEK'S DEADWEIGHT CATTLE PRICES (UK / ROI)

W/E 02/07/2016	Northern Ireland	Rep of Ireland	Scotland	Northern England	Midlands & Wales	Southern England	GB
Steers	U3	332.4	335.7	349.1	338.1	337.3	341.0
	R3	329.3	327.8	349.7	331.3	327.4	332.4
	R4	326.2	328.1	351.0	341.0	327.3	331.4
	AVG	318.4	-	345.7	326.7	316.0	313.5
Heifers	U3	334.9	353.4	361.0	343.7	343.5	344.3
	R3	329.2	339.3	351.8	332.8	329.4	330.8
	R4	326.9	337.7	351.8	336.2	329.6	327.2
	AVG	320.6	-	350.2	325.3	321.4	312.1
Young Bulls	U3	324.6	335.9	346.3	325.9	333.2	337.7
	R3	323.7	324.9	338.5	316.5	332.2	333.9
	O3	306.3	304.9	307.0	283.1	287.8	283.6
	AVG	312.1	-	338.0	313.1	309.7	319.5
Prime Cattle Price Reported		5212	-	6674	6966	6576	4057
Cows	O3	245.6	251.1	254.9	235.4	240.9	236.8
	O4	250.7	253.4	260.0	239.8	241.4	235.7
	P2	205.6	224.4	210.0	193.3	196.7	185.5
	P3	229.2	243.0	212.2	216.7	208.9	212.9
	AVG	231.1	-	246.4	216.1	205.5	200.8

Notes: (i) Prices are p/kg Sterling-ROI prices converted at 1 euro 83.03 =p Stg  
(ii) Shading indicates a lower price than the previous week.  
(iii) AVG is the average of all grades in the category, not just those listed

### LATEST LIVEWEIGHT CATTLE MART PRICES NI

W/E 02/07/16	1st QUALITY			2nd QUALITY		
	From	To	Avg	From	To	Avg
<b>Finished Cattle (p/kg)</b>						
Steers	176	184	180	160	175	168
Friesians	127	136	130	124	127	126
Heifers	180	195	186	160	179	170
Beef Cows	140	183	148	108	139	123
Dairy Cows	102	120	106	60	101	80
<b>Store Cattle (p/kg)</b>						
Bullocks up to 400kg	200	217	210	165	199	185
Bullocks 400kg - 500kg	200	224	212	165	199	185
Bullocks over 500kg	170	180	175	152	167	160
Heifers up to 450kg	206	244	213	165	205	185
Heifers over 450kg	190	208	198	160	189	175
<b>Dropped Calves (£/head)</b>						
Continental Bulls	300	450	350	150	298	220
Continental Heifers	200	325	250	100	198	150
Friesian Bulls	120	200	160	40	118	80
Holstein Bulls	80	180	115	25	78	50

### LATEST SHEEP MARTS

From: 01/07/16		Lambs (P/KG LW)			
To: 07/07/16		No	From	To	Avg
Friday	Newtownstewart	580	356	380	-
Saturday	Swatragh	895	359	428	-
Monday	Kilrea	740	352	374	-
Tuesday	Saintfield	707	344	390	-
	Rathfriland	1300	350	388	363
Wednesday	Ballymena	1437	300	404	346
	Enniskillen	725	344	365	-
	Markethill	1050	340	390	360
	Armoys	584	340	393	353

Contact us:

Website: [www.lmcni.com](http://www.lmcni.com)

Telephone: 028 9263 3000

Fax: 028 9263 3001

FQAS Helpline: 028 9263 3024

Answerphone: 028 9263 3011

Comments: [bulletin@lmcni.com](mailto:bulletin@lmcni.com)

Information supplied by LMC / DARD/ AHDB/ DAFM  
LMC does not guarantee the accuracy or completeness of any third party information provided in or included with this publication. LMC hereby disclaims any responsibility for error, omission or inaccuracy in the information, misinterpretation or any other loss, disappointment, negligence or damage caused by reliance on third party information.



Not for further publication or distribution without prior permission from LMC