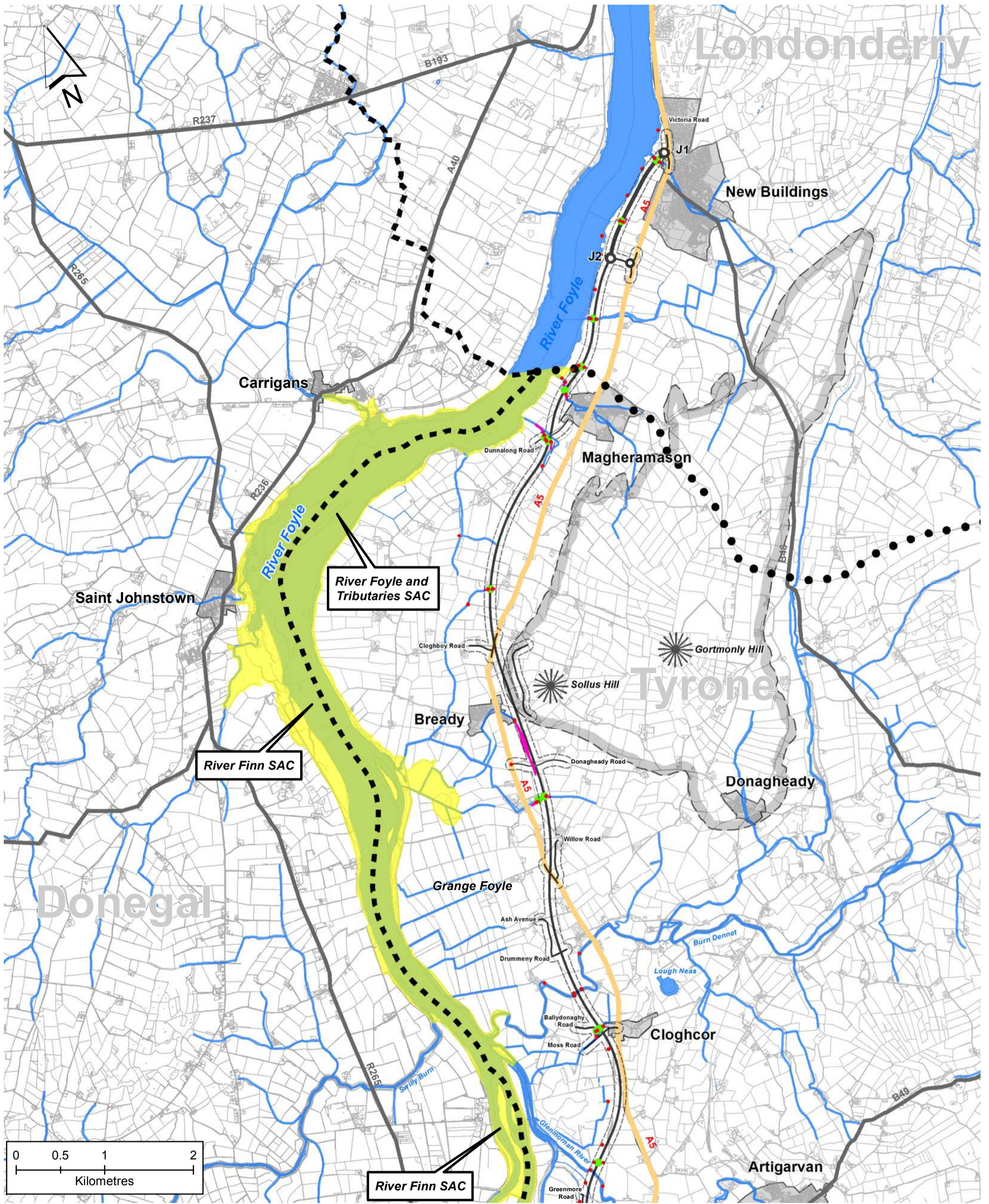


**Appendix 1 – Figures 1 to 13**



Client: **ROADS Service**

Project: **A5 WTC**

Drawing Title: **INFORMATION TO INFORM AN APPROPRIATE ASSESSMENT - SAC WATERCOURSES**

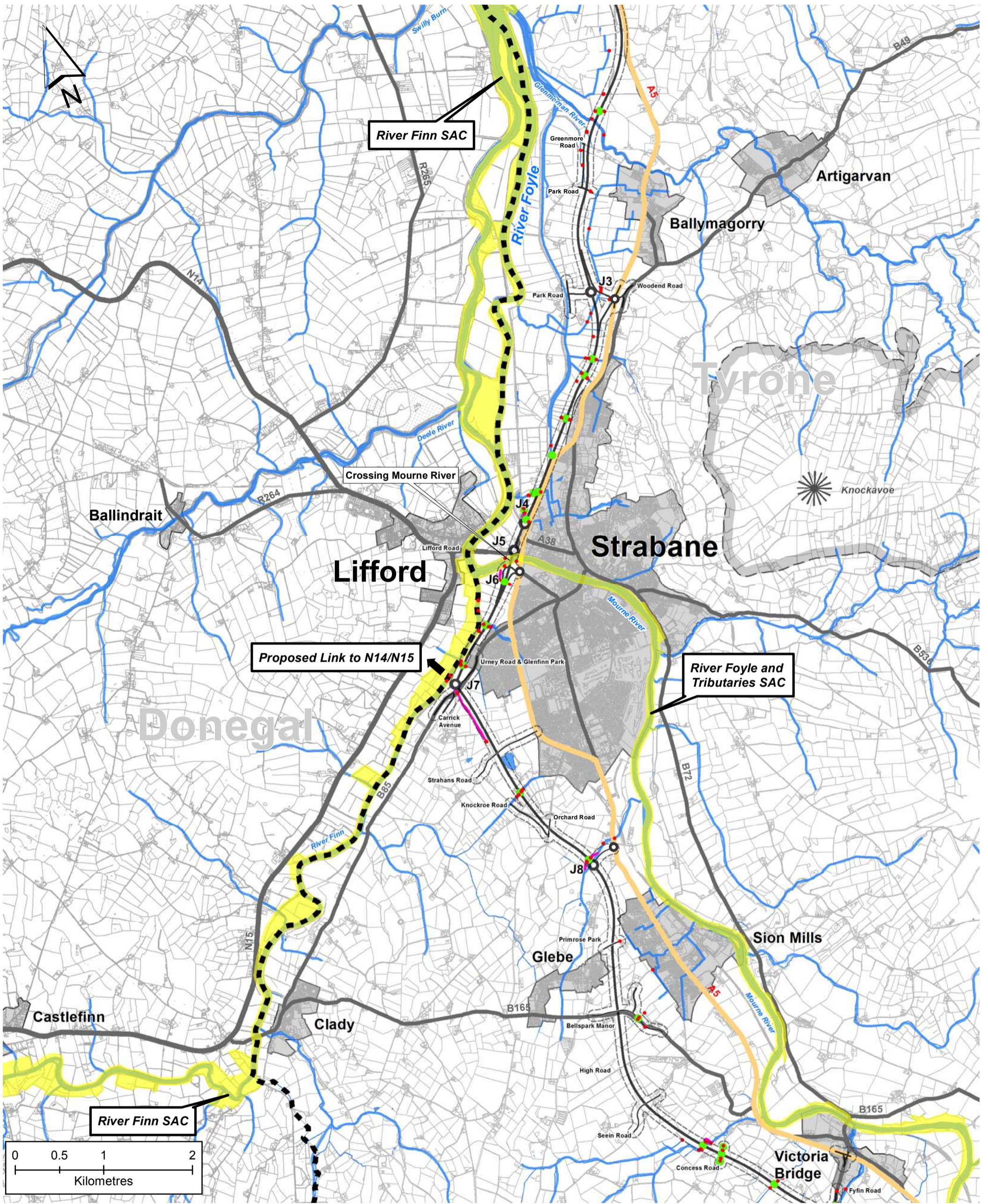
Figure No: **Figure 1**

Version: **A**

Legend

- Existing A5
- Proposed Scheme
- Junction Location
- Side Road Connections
- Roads (A Class / B Class)
- Border
- County Boundaries
- Settlements
- Prominent Local Hills (Indicative Extents)
- Centreline Buffer (65m)
- Special Area of Conservation (SAC)
- Rivers and Water Bodies
- Drainage Outfall
- Drainage Culvert
- Drainage Diversion

REPRODUCED FROM ORDNANCE SURVEY OF NORTHERN IRELAND'S DATA WITH THE PERMISSION OF THE CONTROLLER OF HER MAJESTY'S STATIONERY OFFICE. © CROWN COPYRIGHT AND DATABASE RIGHTS NIMA ES&LA214. UNAUTHORISED REPRODUCTION INFRINGES © CROWN COPYRIGHT AND MAY LEAD TO PROSECUTION OR CIVIL PROCEEDINGS



Client: **ROADS Service**

Project: **A5 WTC**

Drawing Title: **INFORMATION TO INFORM AN APPROPRIATE ASSESSMENT - SAC WATERCOURSES**

Figure No: **Figure 2**

Version: **A**

Logo: **mouchel**

Legend:

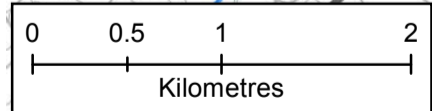
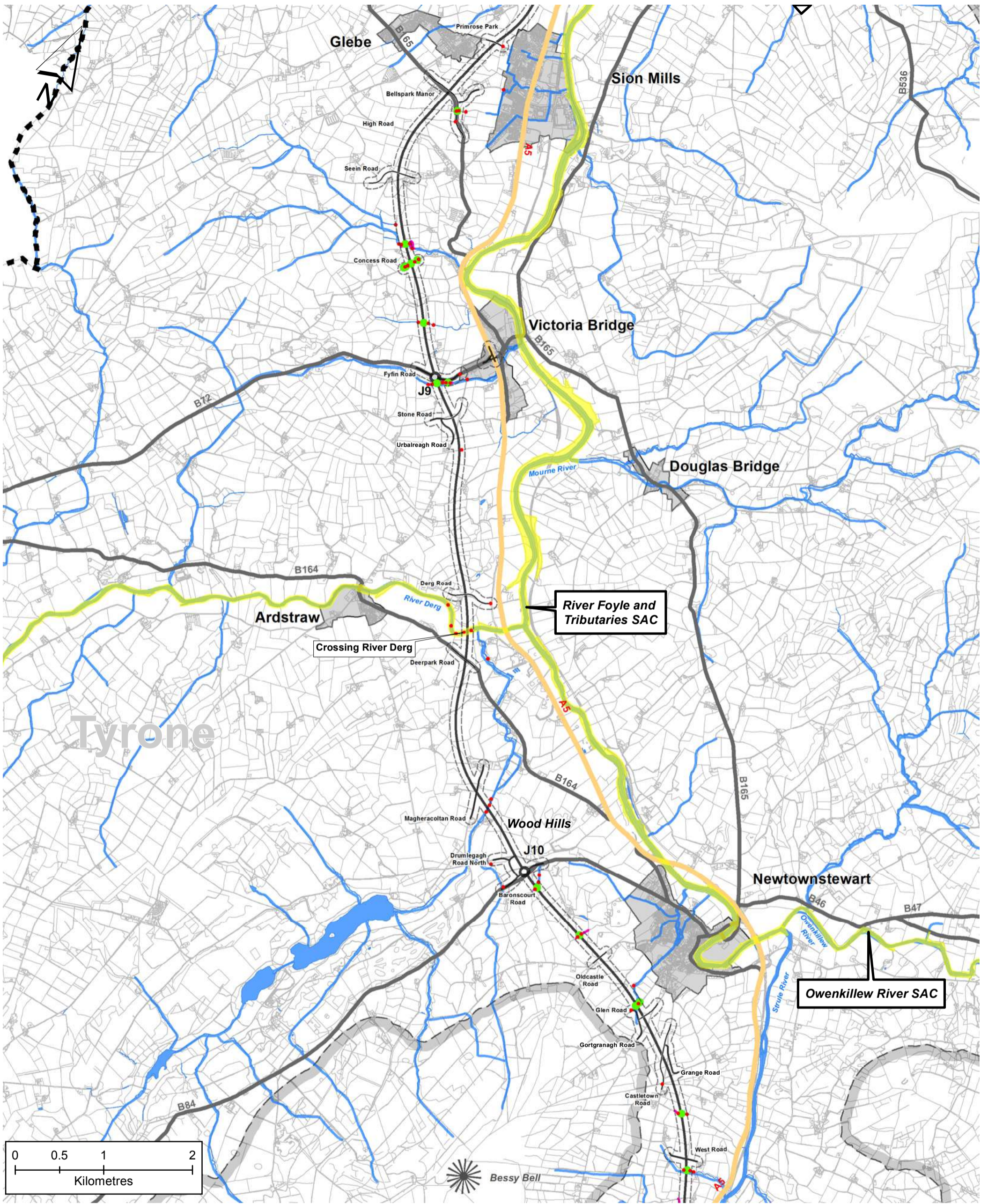
- Existing A5
- Proposed Scheme
- Junction Location
- Side Road Connections
- Roads (A Class / B Class)
- Border
- County Boundaries
- Settlements
- Prominent Local Hills (Indicative Extents)
- Centreline Buffer (65m)
- Special Area of Conservation (SAC)
- Rivers and Water Bodies
- Drainage Outfall
- Drainage Culvert
- Drainage Diversion

Reproduced from Ordnance Survey of Northern Ireland's data with the permission of the Controller of Her Majesty's Stationery Office. © Crown Copyright and Database Rights NIMA ES&LA214. UNAUTHORISED REPRODUCTION INFRINGES © CROWN COPYRIGHT AND MAY LEAD TO PROSECUTION OR CIVIL PROCEEDINGS.

Information to Inform an Appropriate Assessment - SAC Watercourses

Figure 2

Version A



Client: **ROADS Service**

Project: **A5 WTC**

Drawing Title: **INFORMATION TO INFORM AN APPROPRIATE ASSESSMENT - SAC WATERCOURSES**

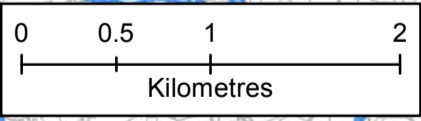
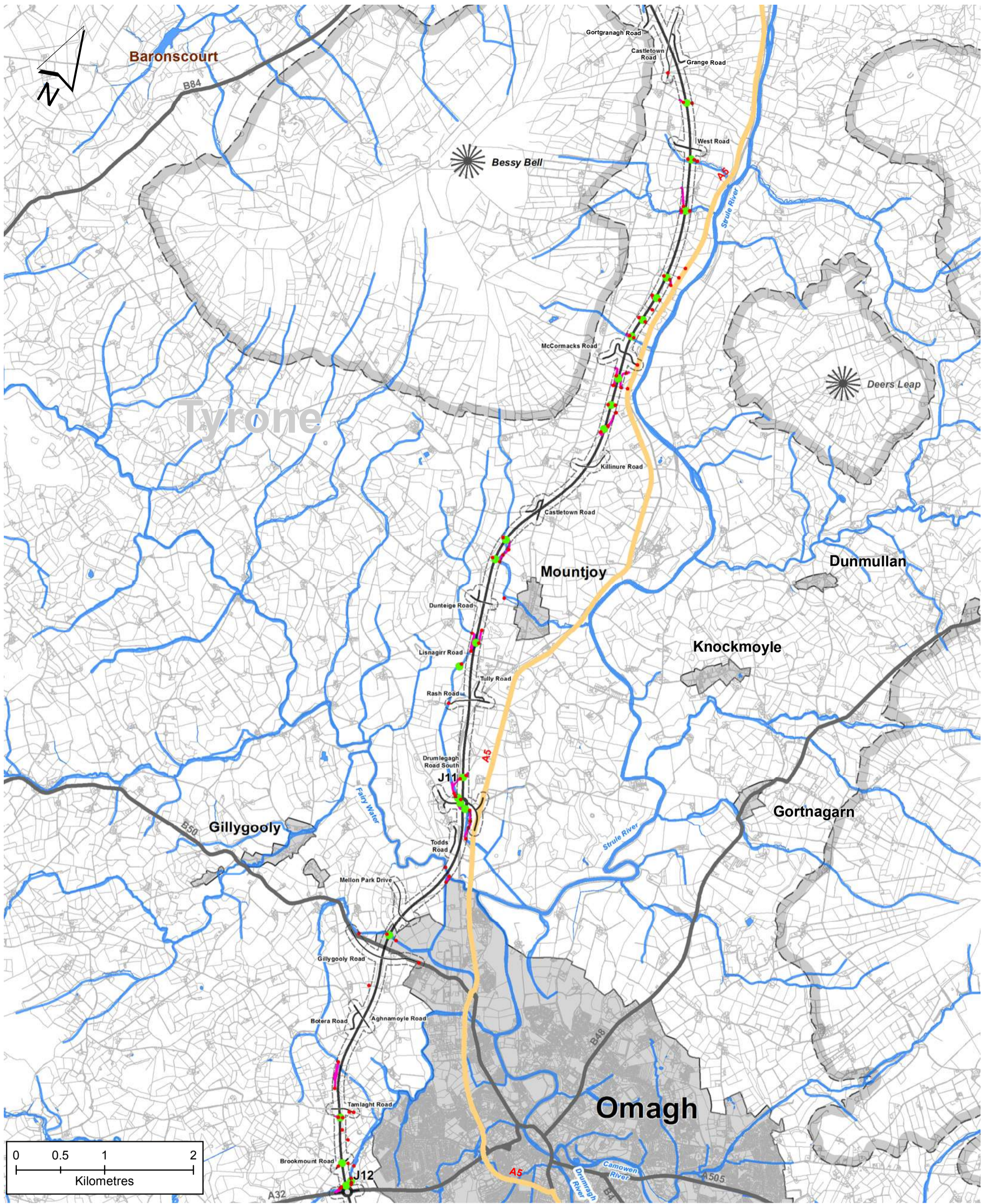
Figure No: **Figure 3**

Version: **A**

Legend:

- Existing A5
- Proposed Scheme
- Junction Location
- Side Road Connections
- Roads (A Class / B Class)
- Border
- County Boundaries
- Settlements
- Prominent Local Hills (Indicative Extents)
- Centreline Buffer (65m)
- Special Area of Conservation (SAC)
- Rivers and Water Bodies
- Drainage Outfall
- Drainage Culvert
- Drainage Diversion

REPRODUCED FROM ORDNANCE SURVEY OF NORTHERN IRELAND'S DATA WITH THE PERMISSION OF THE CONTROLLER OF HER MAJESTY'S STATIONERY OFFICE. © CROWN COPYRIGHT AND DATABASE RIGHTS NIMA ES&LA214. UNAUTHORISED REPRODUCTION INFRINGES © CROWN COPYRIGHT AND MAY LEAD TO PROSECUTION OR CIVIL PROCEEDINGS



Client: **ROADS Service**

Project: **A5 WTC**

Drawing Title: **INFORMATION TO INFORM AN APPROPRIATE ASSESSMENT - SAC WATERCOURSES**

Figure No: **Figure 4**

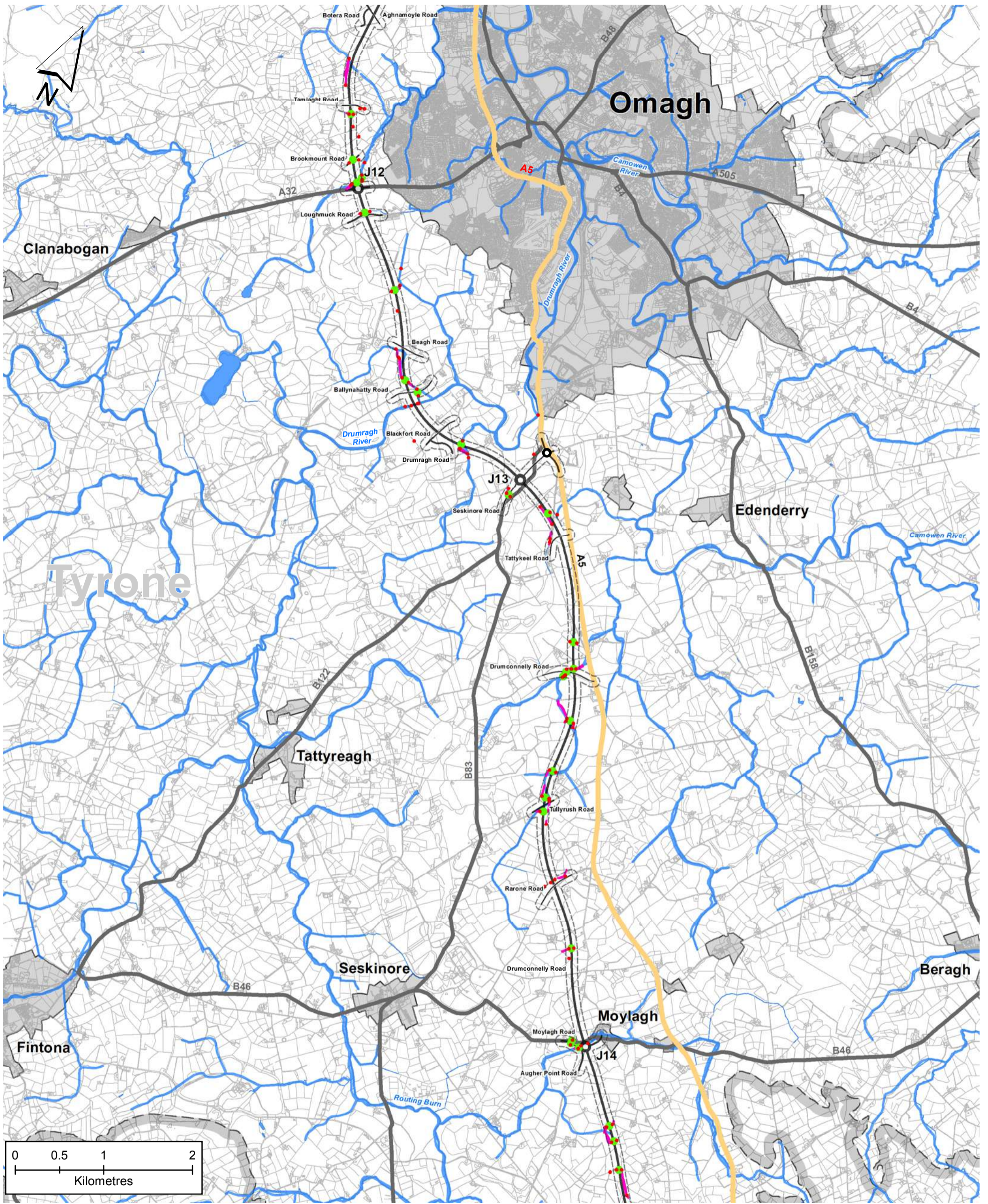
Version: **A**

Logos: **mouchel**, **A5 WTC**

Legend

- Existing A5
- Proposed Scheme
- Junction Location
- Side Road Connections
- Roads (A Class / B Class)
- Border
- County Boundaries
- Settlements
- Prominent Local Hills (Indicative Extents)
- Centreline Buffer (65m)
- Special Area of Conservation (SAC)
- Rivers and Water Bodies
- Drainage Outfall
- Drainage Culvert
- Drainage Diversion

REPRODUCED FROM ORDNANCE SURVEY OF NORTHERN IRELAND'S DATA WITH THE PERMISSION OF THE CONTROLLER OF HER MAJESTY'S STATIONERY OFFICE. © CROWN COPYRIGHT AND DATABASE RIGHTS NIMA ES&LA214. UNAUTHORISED REPRODUCTION INFRINGES © CROWN COPYRIGHT AND MAY LEAD TO PROSECUTION OR CIVIL PROCEEDINGS



Client  
**ROADS Service**

Project  
**A5 WTC**

Drawing Title  
**INFORMATION TO INFORM AN APPROPRIATE ASSESSMENT - SAC WATERCOURSES**

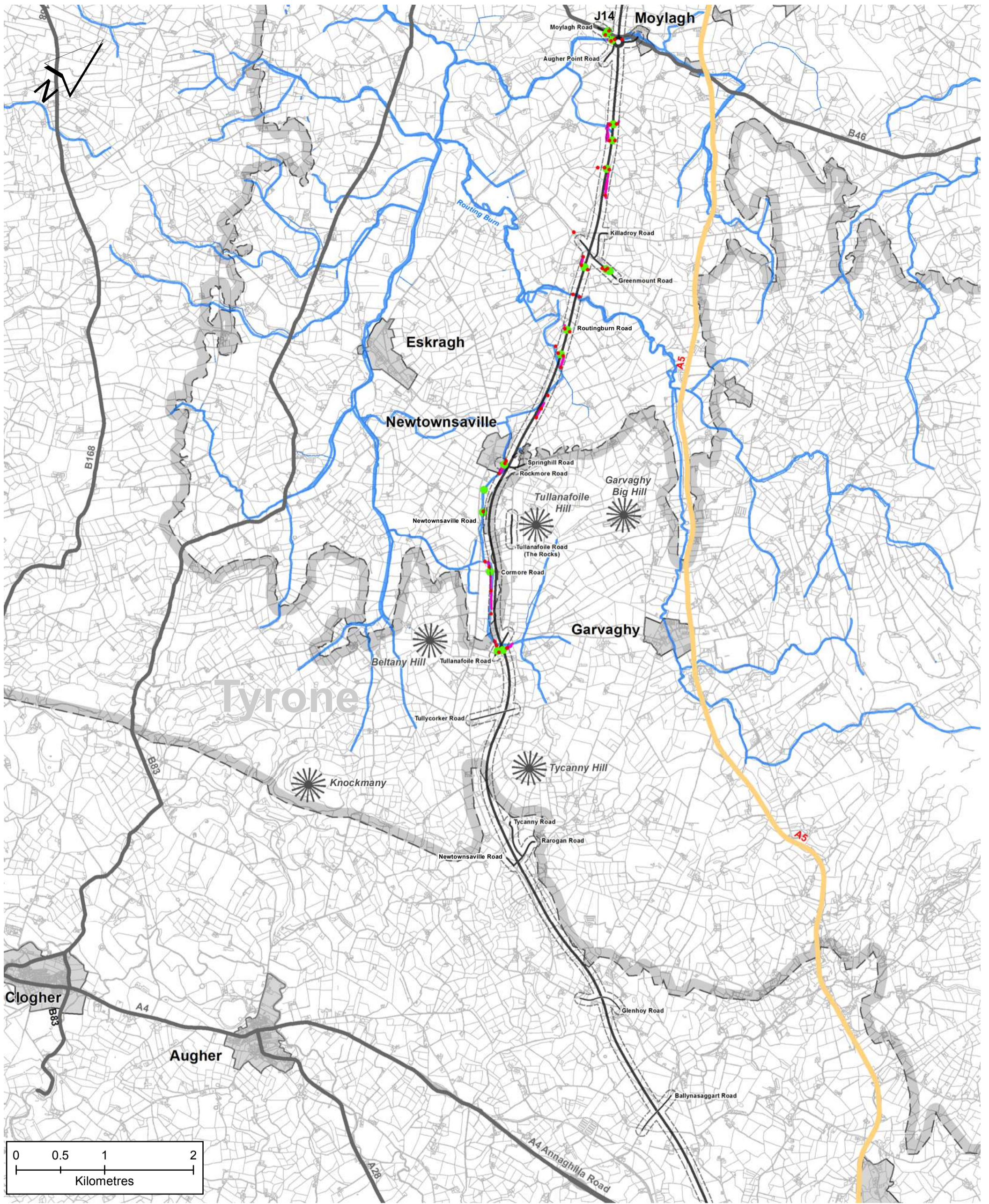
Figure No  
**Figure 5**

Version  
**A**

REPRODUCED FROM ORDNANCE SURVEY OF NORTHERN IRELAND'S DATA WITH THE PERMISSION OF THE CONTROLLER OF HER MAJESTY'S STATIONERY OFFICE. © CROWN COPYRIGHT AND DATABASE RIGHTS NIMA ES&LA214. UNAUTHORISED REPRODUCTION INFRINGES © CROWN COPYRIGHT AND MAY LEAD TO PROSECUTION OR CIVIL PROCEEDINGS

Legend

- Existing A5
- Proposed Scheme
- Junction Location
- Side Road Connections
- Roads (A Class / B Class)
- Border
- County Boundaries
- Settlements
- Prominent Local Hills (Indicative Extents)
- Centreline Buffer (65m)
- Special Area of Conservation (SAC)
- Rivers and Water Bodies
- Drainage Outfall
- Drainage Culvert
- Drainage Diversion



Client  
**ROADS Service**

Project  
**A5 WTC**

Drawing Title  
**INFORMATION TO INFORM AN APPROPRIATE ASSESSMENT - SAC WATERCOURSES**

Figure No  
**Figure 6**

Version  
**A**

**mouchel**  
Building Great Infrastructure

Legend

- Existing A5
- Proposed Scheme
- Junction Location
- Side Road Connections
- Roads (A Class / B Class)
- Border
- County Boundaries
- Settlements
- Prominent Local Hills (Indicative Extents)
- Centreline Buffer (65m)
- Special Area of Conservation (SAC)
- Rivers and Water Bodies
- Drainage Outfall
- Drainage Culvert
- Drainage Diversion

REPRODUCED FROM ORDNANCE SURVEY OF NORTHERN IRELAND'S DATA WITH THE PERMISSION OF THE CONTROLLER OF HER MAJESTY'S STATIONERY OFFICE. © CROWN COPYRIGHT AND DATABASE RIGHTS NIMA ES&LA214. UNAUTHORISED REPRODUCTION INFRINGES © CROWN COPYRIGHT AND MAY LEAD TO PROSECUTION OR CIVIL PROCEEDINGS