



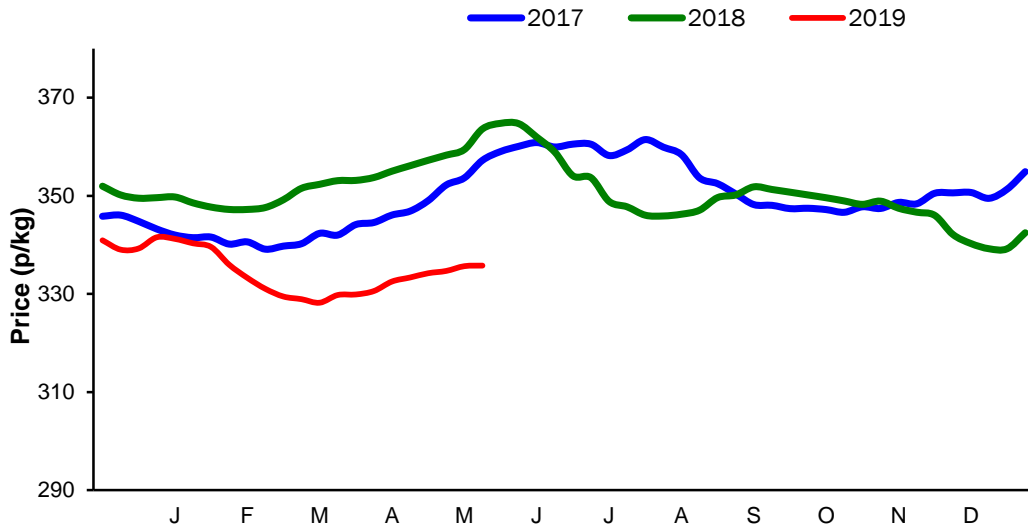
**Monthly Economic Review**  
**May 2019**

## Contents

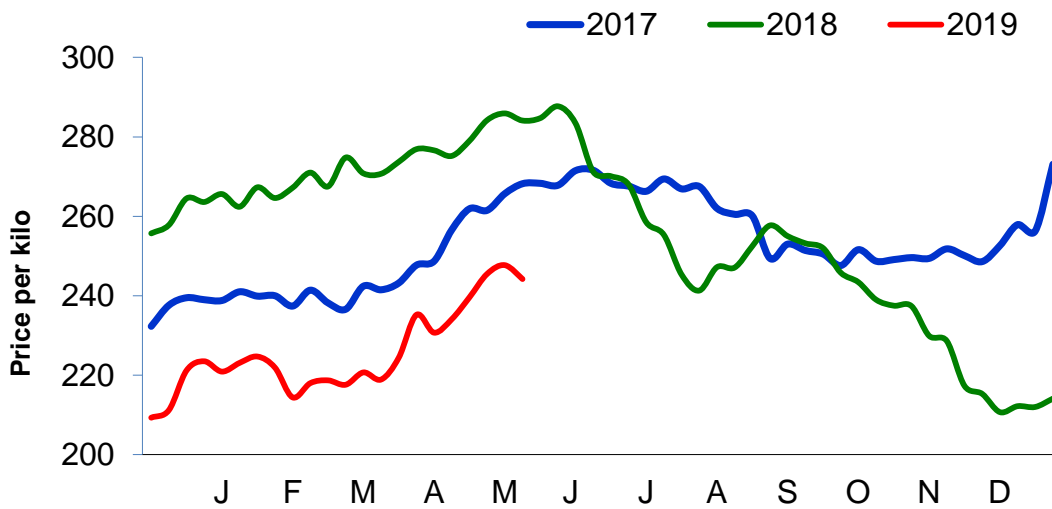
Contents.....	2
Cattle Prices .....	3
Average NI Clean Cattle Price .....	3
Average NI Cow Price.....	3
Cattle Slaughtering.....	4
NI Clean Cattle Slaughtering – Cumulative .....	4
NI Weekly Clean Cattle Slaughtering.....	4
NI Weekly Cow Slaughtering .....	5
Sheep Prices.....	6
Average NI Lamb / Hogget Price .....	6
Sheep Slaughtering.....	7
Cumulative Lamb & Hogget Slaughtering .....	7
Total Weekly Lamb & Hogget Slaughtering .....	7
Total Weekly Ewe and Ram Slaughtering.....	7
Total Carcase Weight Produced for the Food Chain.....	8
Change in Throughput / Production .....	9
Supply and Price.....	10
NI Lamb/Hogget Kill vs. Average Lamb / Hogget Price .....	10
NI Clean Cattle Kill vs. Average Clean Cattle Price.....	10
British Isles Price Comparisons .....	11
UK Average Cow Prices .....	11
Weekly UK Cow Prices .....	11
British Isles R3 Steer Price .....	12
British Isles R4 Steer Price .....	12
British Isles Average R3 and R4 Steer price .....	13
British Isles R3 Heifer Price .....	14
British Isles R4 Heifer Price .....	14
British Isles Average R3 and R4 Heifer price.....	15
Exchange Rate £ / Euro .....	16
Imports.....	17
Monthly Live Imports of Cattle into NI for Direct Slaughter .....	17
Monthly Live Imports of Sheep into NI for Direct Slaughter .....	17
Exports .....	18
Monthly Live Exports of Cattle from NI into RoI and GB.....	18
Monthly live Exports of Sheep from NI into RoI and GB .....	18

Cattle Prices

Average NI Clean Cattle Price

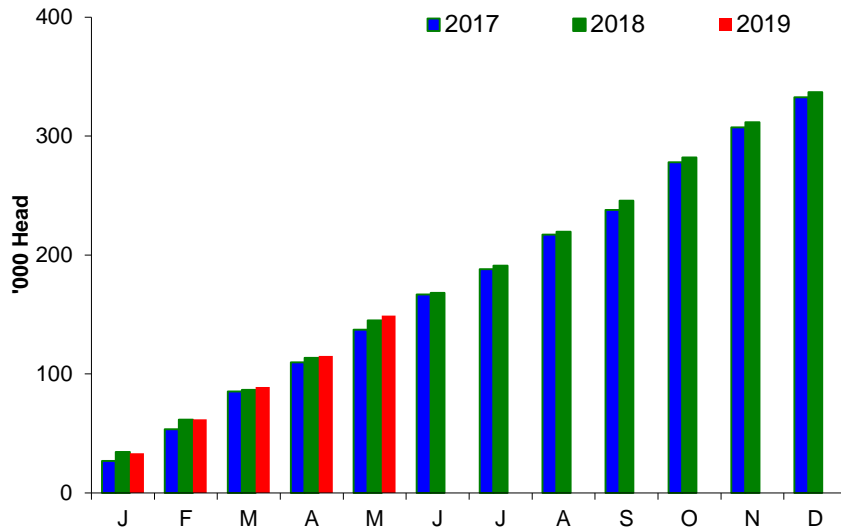


Average NI Cow Price

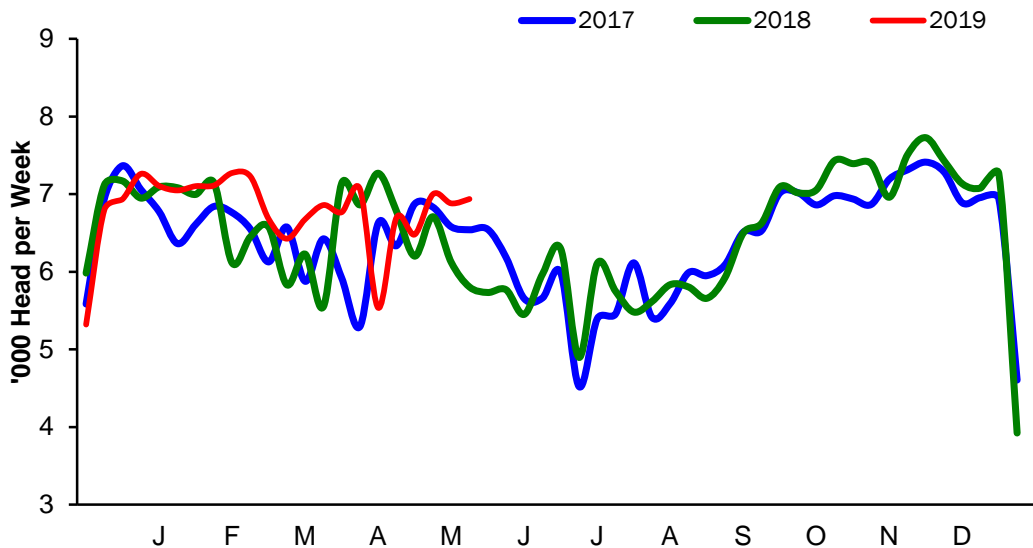


### Cattle Slaughtering

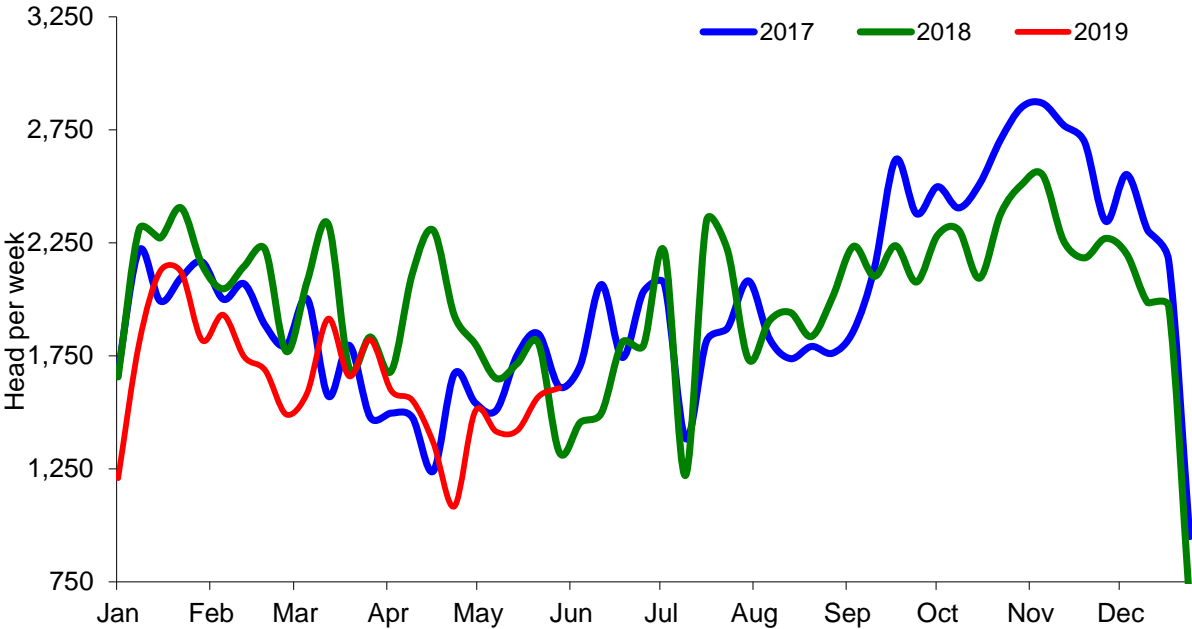
#### NI Clean Cattle Slaughtering – Cumulative



#### NI Weekly Clean Cattle Slaughtering

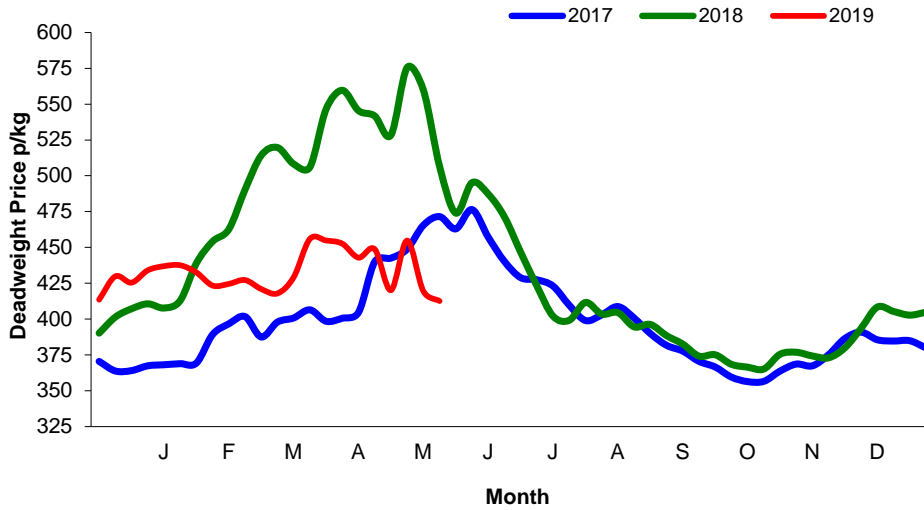


NI Weekly Cow Slaughtering



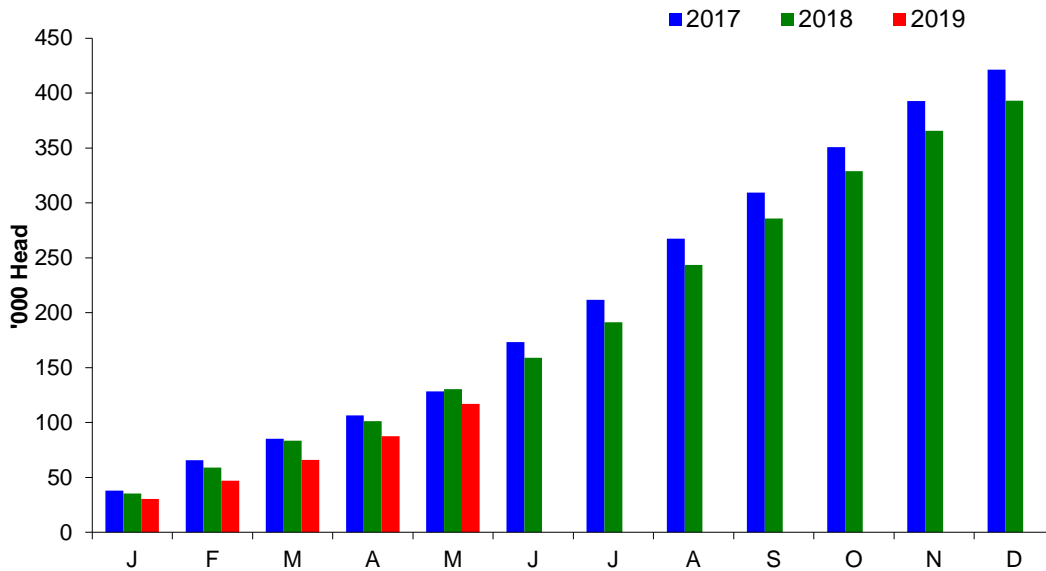
### Sheep Prices

#### Average Deadweight NI Hogget / Lamb Price

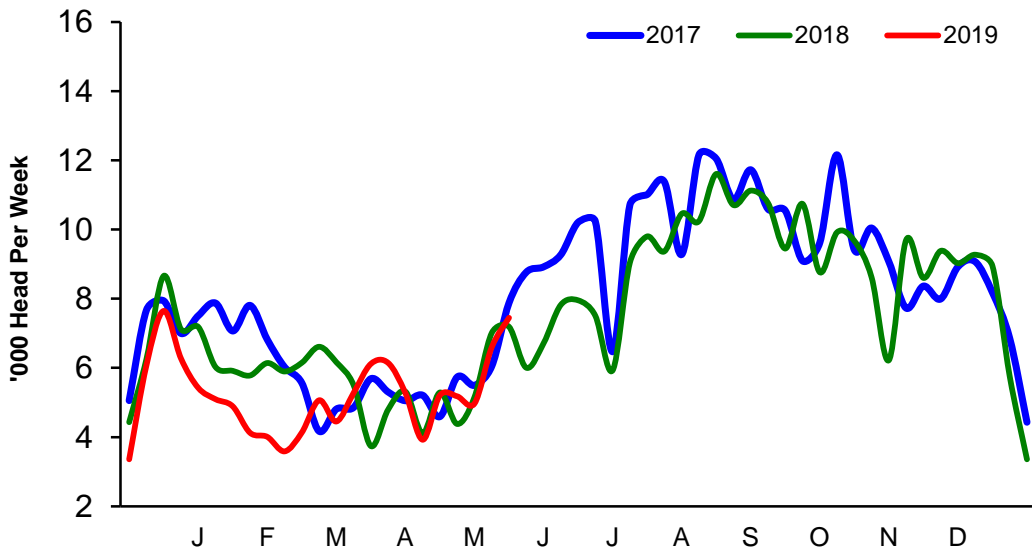


### Sheep Slaughterings

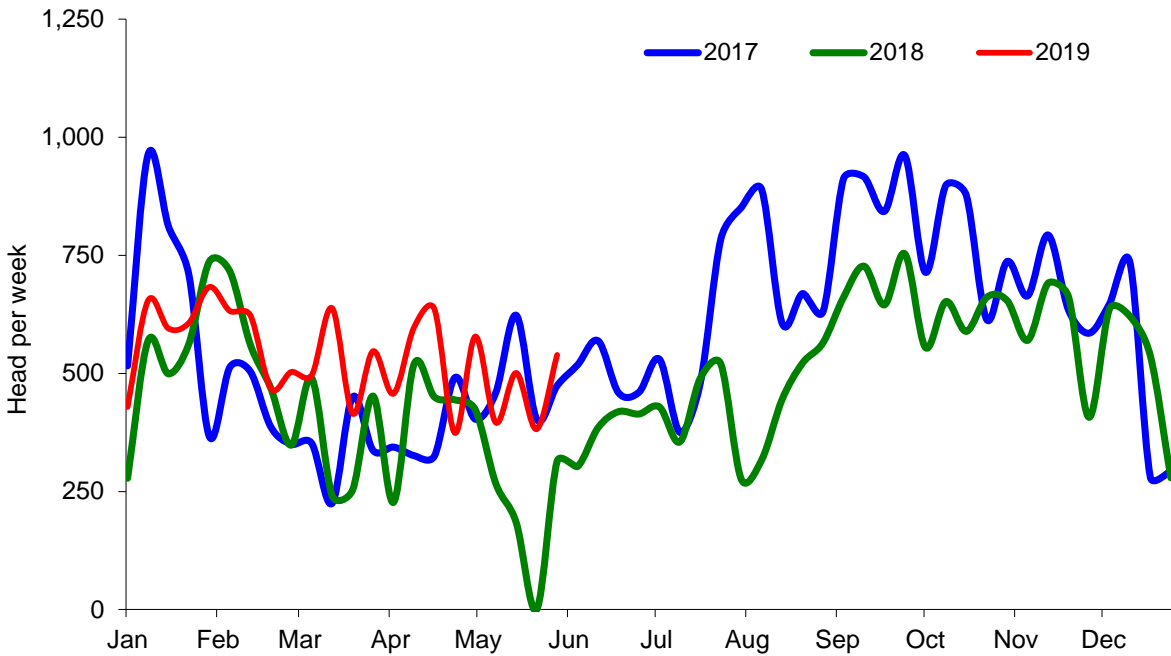
#### Cumulative Lamb & Hogget Slaughterings



Total Weekly Lamb & Hogget Slaughtering



Total Weekly Ewe and Ram Slaughtering



**Market Information May 2019**  
**Page 8**

<b>NI CATTLE AND SHEEP SLAUGHTERINGS FOR THE FOODCHAIN</b>						
	<b>May</b>			<b>Year to Date</b>		
	<b>(5 weeks ended 01/06/19)</b>			<b>(22 weeks ended 01/06/19)</b>		
	<b>May-18</b>	<b>May-19</b>	<b>% Change</b>	<b>2018</b>	<b>2019</b>	<b>Change</b>
<b>CATTLE</b>						
Steers	14,777	15,680	+6%	69,581	69,343	-0%
Heifers	12,287	13,429	+9%	59,092	61,917	+5%
Young Bulls / Calves	4,552	4,885	+7%	16,502	17,926	+9%
<b>Total Prime Cattle</b>	<b>31,616</b>	<b>33,994</b>	<b>+8%</b>	<b>145,175</b>	<b>149,186</b>	<b>+3%</b>
Calves	548	518	-5%	2,581	2,429	-6%
Cows	8,299	7,518	-9%	43,254	36,038	-17%
Mature Bulls	352	778	+121%	1,536	2,067	+35%
<b>Total Cattle</b>	<b>40,815</b>	<b>42,808</b>	<b>+5%</b>	<b>192,546</b>	<b>189,720</b>	<b>-1%</b>
<b>SHEEP</b>						
Lambs & Hoggets	29,023	29,402	+1%	130,386	116,896	-10%
Ewes & Rams	1,188	2,396	+102%	9,004	11,750	+30%
<b>Total Sheep</b>	<b>30,211</b>	<b>31,798</b>	<b>+5%</b>	<b>139,390</b>	<b>128,646</b>	<b>-8%</b>
The above figures are provisional; any amendments will be incorporated in the cumulative data (source DAERA).						

<b>NI BEEF AND SHEEPMEAT PRODUCTION - FOODCHAIN</b>						
	<b>May</b>			<b>Year to Date</b>		
	<b>(5 weeks ended 01/06/19)</b>			<b>(22 weeks ended 01/06/19)</b>		
	<b>May-18</b>	<b>May-19</b>	<b>% Change</b>	<b>2018</b>	<b>2019</b>	<b>Change</b>
<b>BEEF</b>						
Steers	5,177	5,651	+9%	24,463	24,954	+2%
Heifers	3,871	4,345	+12%	18,675	20,012	+7%
Young Bulls	1,533	1,695	+11%	5,453	6,089	+12%
<b>Total Prime Beef</b>	<b>10,581</b>	<b>11,691</b>	<b>+10%</b>	<b>48,591</b>	<b>51,055</b>	<b>+5%</b>
Calves	105	117	+11%	493	507	+3%
Cows	2,510	2,325	-7%	12,957	11,088	-14%
Mature Bulls	156	321	+106%	668	871	+30%
<b>Total Beef</b>	<b>13,351</b>	<b>14,454</b>	<b>+8%</b>	<b>62,709</b>	<b>63,522</b>	<b>+1%</b>
<b>SHEEPMEAT</b>						
Lambs & Hoggets	613	677	+10%	2,813	2,704	-4%
Ewes & Rams	35	76	+117%	247	353	+43%
<b>Total Sheepmeat</b>	<b>648</b>	<b>753</b>	<b>+16%</b>	<b>3,060</b>	<b>3,057</b>	<b>-0%</b>
The above figures are provisional; any amendments will be incorporated in the cumulative data (source DAERA).						



**Market Information May 2019**  
**Page 9**

**Total Carcase Weight Produced for the Food Chain**  
**Year-to-Date (tonnes – t.)**

Month	Prime Cattle		Cows & Bulls		Lambs/Hoggets		Ewes & Rams	
	2018	2019	2018	2019	2018	2019	2018	2019
January	11,543	11,378	3,406	2,966	764	698	73	87
February	9,194	9,808	2,560	2,249	515	381	53	65
March	8,351	9,243	2,484	2,257	534	440	40	61
May	8,922	8,934	2,510	1,841	387	508	47	63
May	10,581	11,691	2,665	2,646	613	677	35	76
June								
July								
August								
September								
October								
November								
December								
<b>Total</b>	<b>48,591</b>	<b>51,054</b>	<b>13,625</b>	<b>11,959</b>	<b>2,813</b>	<b>2,704</b>	<b>248</b>	<b>352</b>
<b>Change (t.)</b>	<b>2,463</b>		<b>-1,665</b>		<b>-109</b>		<b>105</b>	
<b>% Change</b>	<b>5.07%</b>		<b>-12.22%</b>		<b>-3.87%</b>		<b>42.35%</b>	

*\*excludes calves*

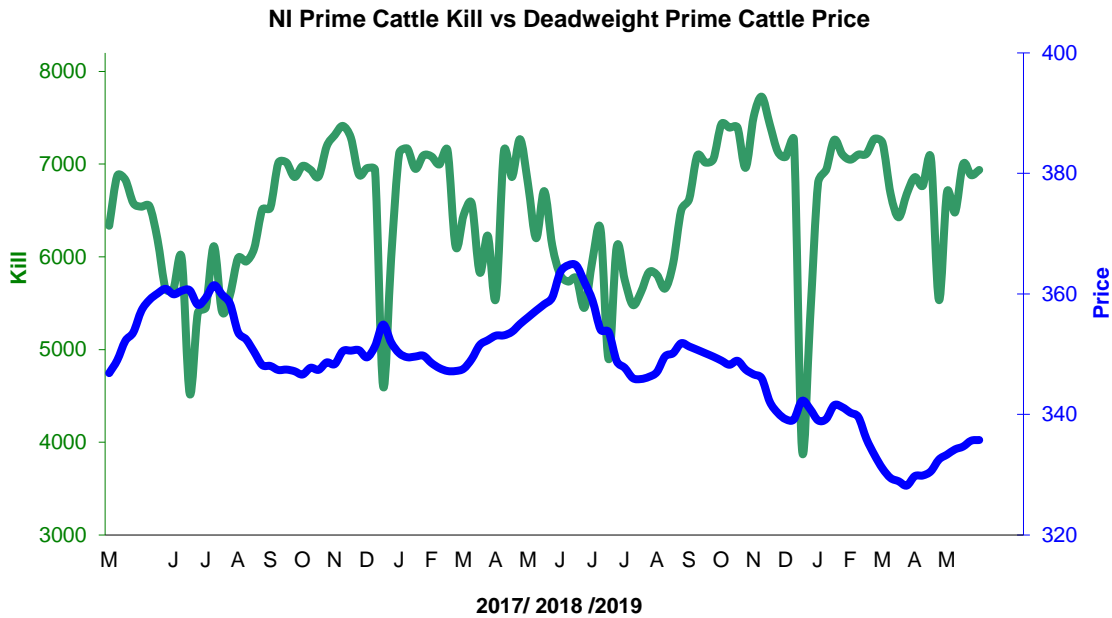
**Change in Throughput / Production**

**Last 5 weeks 2018/2019**

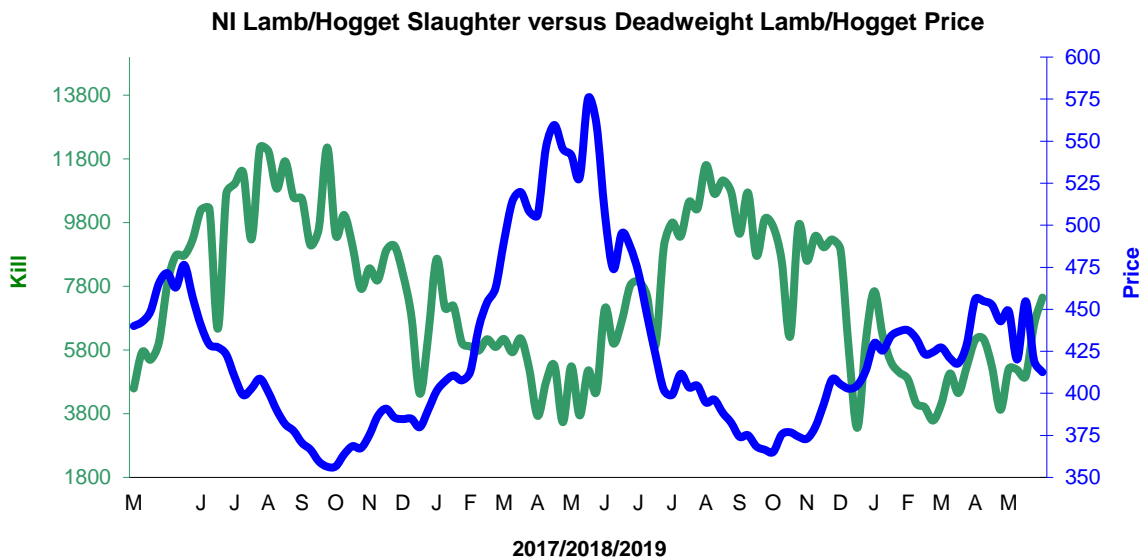
Change in Throughput / Production 2018/2019			
May			
2018/2019	Number	Tonnage	ACW Kg
Prime	7.5%	10.5%	9.19
Cows	-9.4%	-7.4%	6.87
<b>Total</b>	<b>4.9%</b>	<b>8.3%</b>	<b>10.94</b>
Lamb	1.3%	10.4%	1.91
Ewes and Rams	101.7%	117.2%	8.24
<b>Total Sheep</b>	<b>5.3%</b>	<b>16.2%</b>	<b>2.23</b>

Supply and Price

NI Clean Cattle Kill vs. Average Clean Cattle Price



NI Lamb/Hogget Kill vs. Average Lamb / Hogget Price

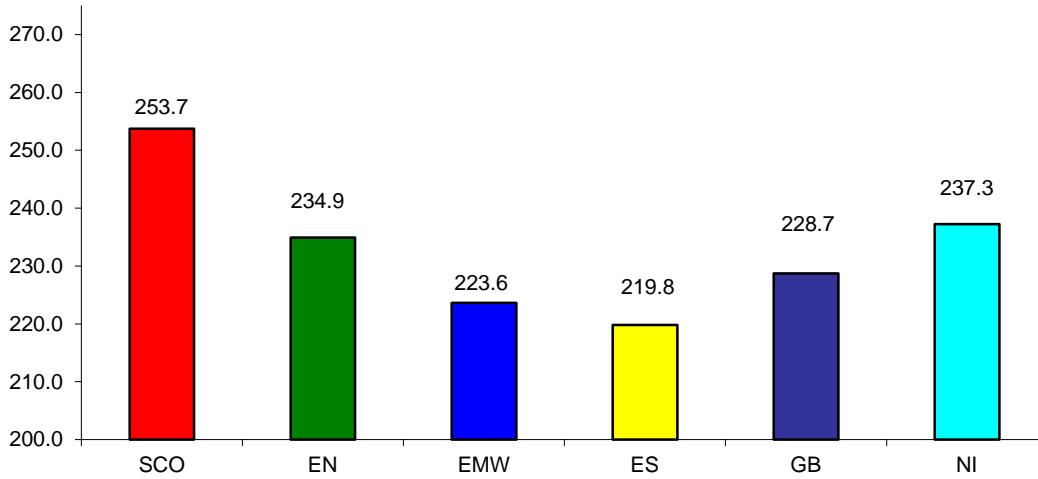


Green	Supply (Kill)
Blue	Price

**BRITISH ISLES COMPARISONS**

**UK Average Cow Prices**

**52 Weeks to 1 June 2019**

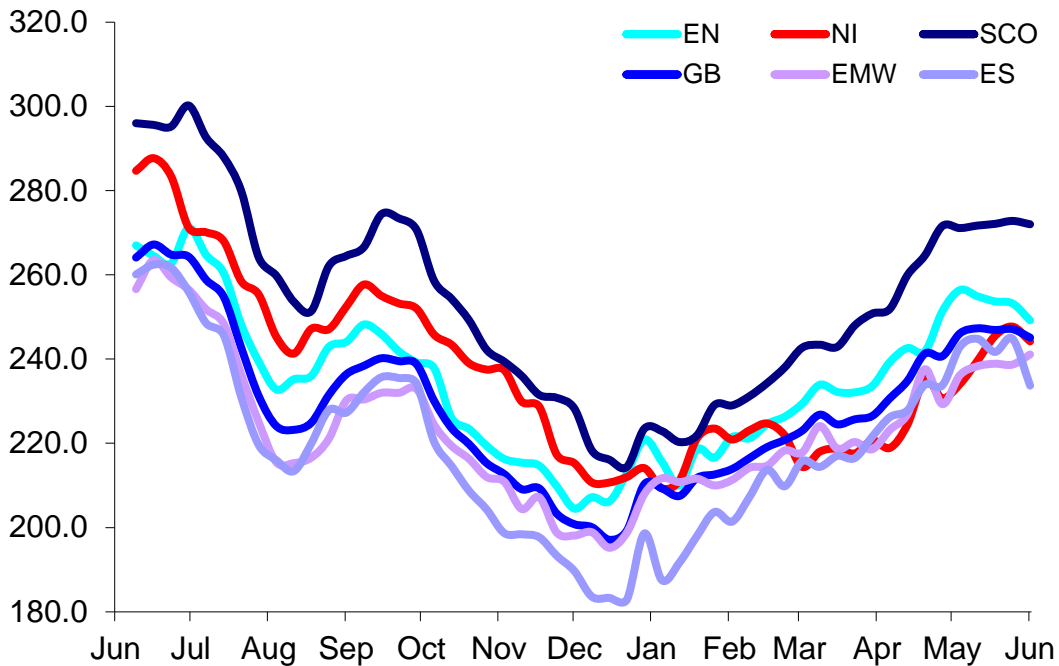


SCO	Scotland
EN	England North
EMW	England Midlands and Wales
ES	England South
NI	Northern Ireland
GB	Great Britain

Prices relate to UK Dressing Specification

**Weekly UK Cow Prices**

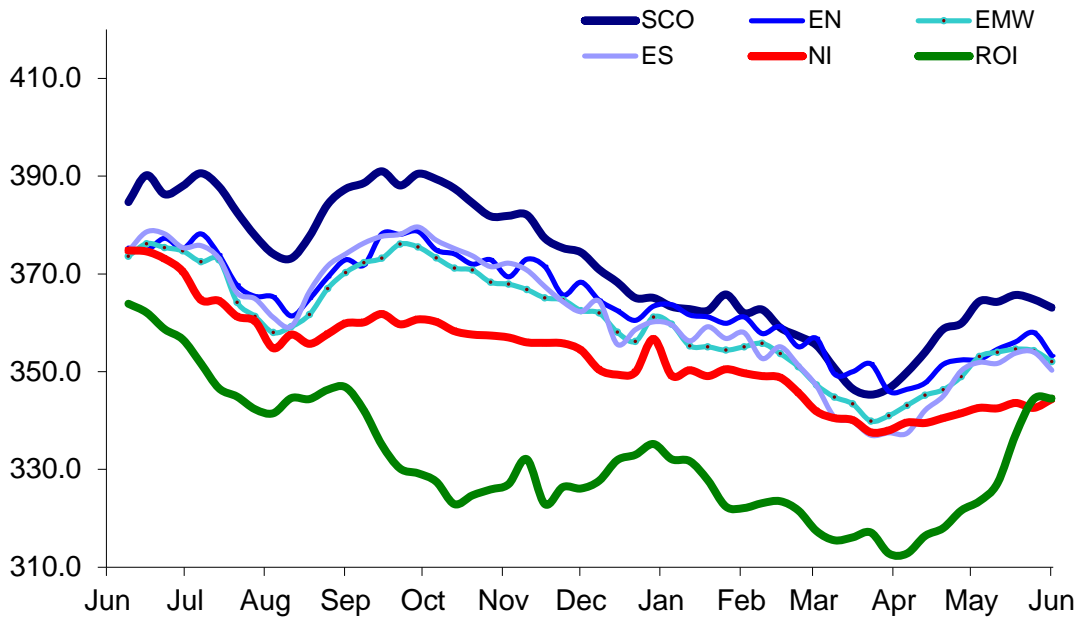
**52 Weeks to 1 June 2019**



Prices relate to UK Dressing Specification

British Isles R3 Steer Price

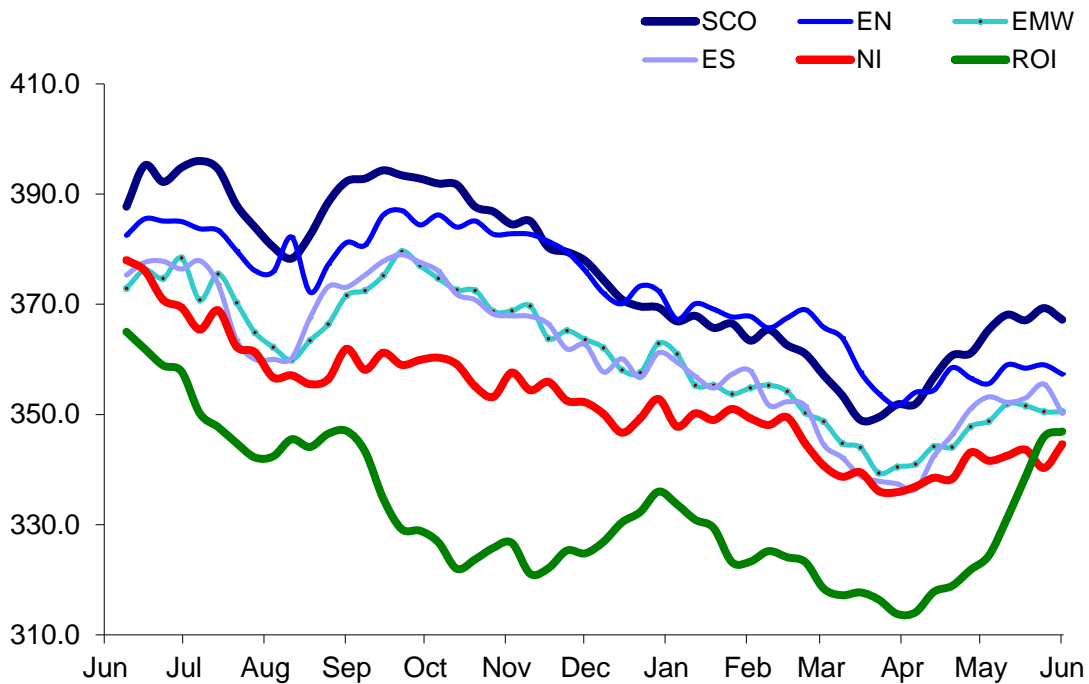
52 Weeks to 1 June 2019



Prices relate to UK Dressing Specification

British Isles R4 Steer Price

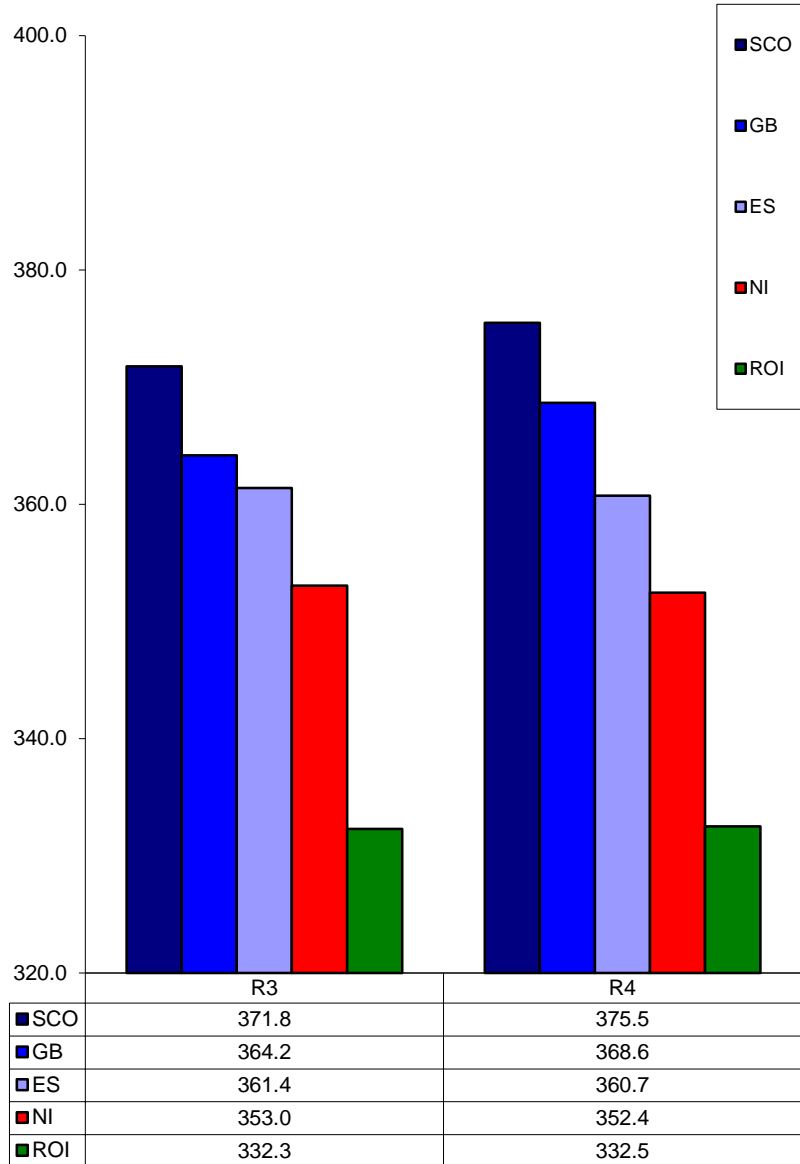
52 Weeks to 1 June 2019



Prices relate to UK Dressing Specification

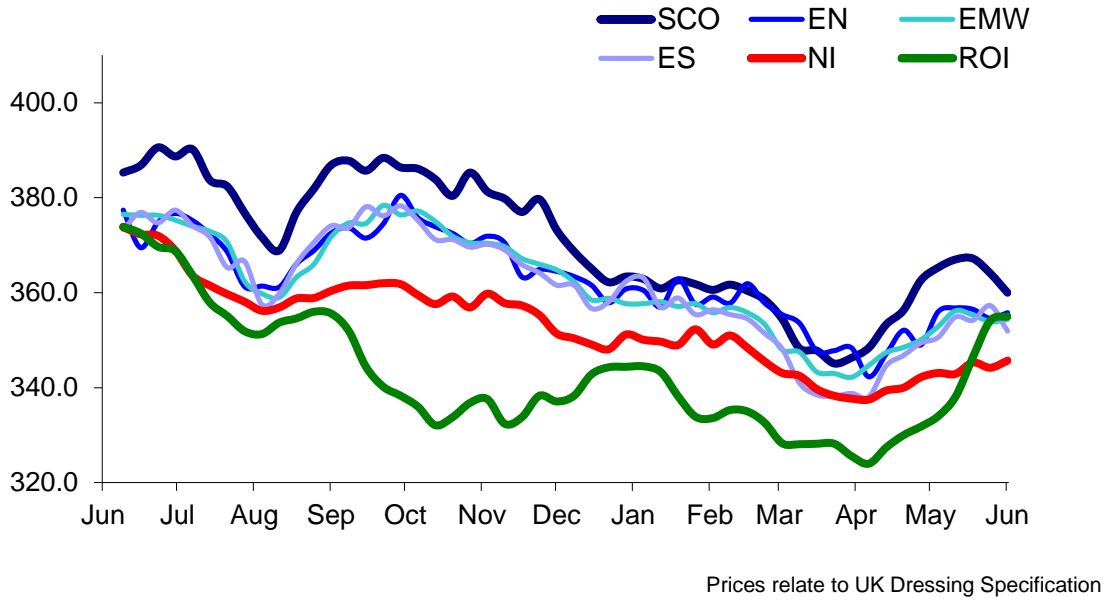
**British Isles Average R3 and R4 Steer price**

**52 Weeks to 1 June 2019**

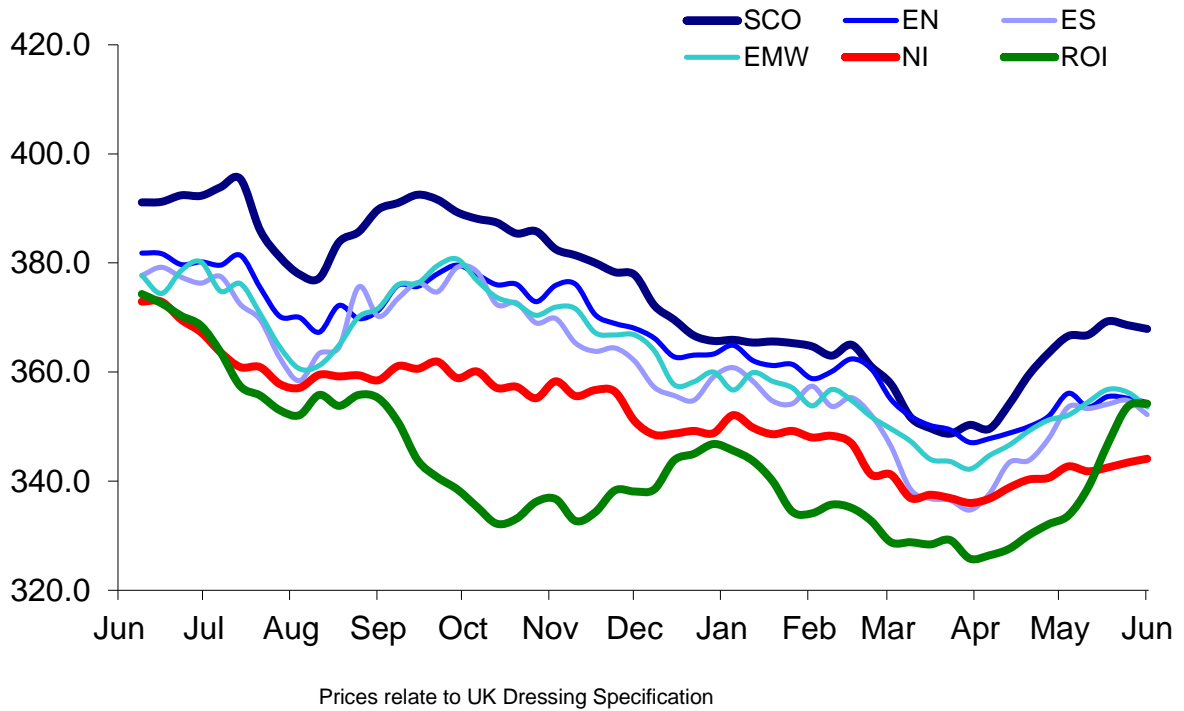


Prices relate to UK Dressing Specification

British Isles R3 Heifer Price  
52 Weeks to 1 June 2019

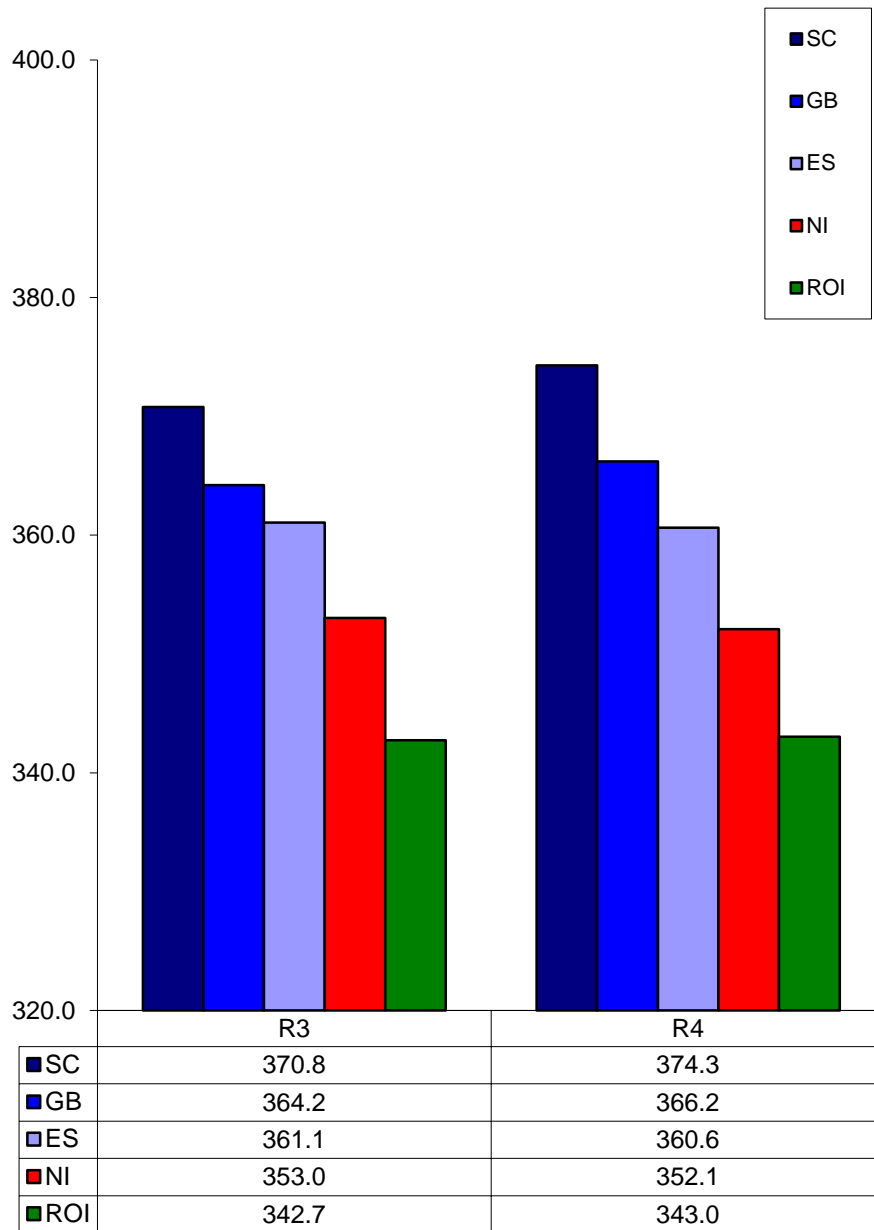


British Isles R4 Heifer Price  
52 Weeks to 1 June 2019



**British Isles Average R3 and R4 Heifer price**

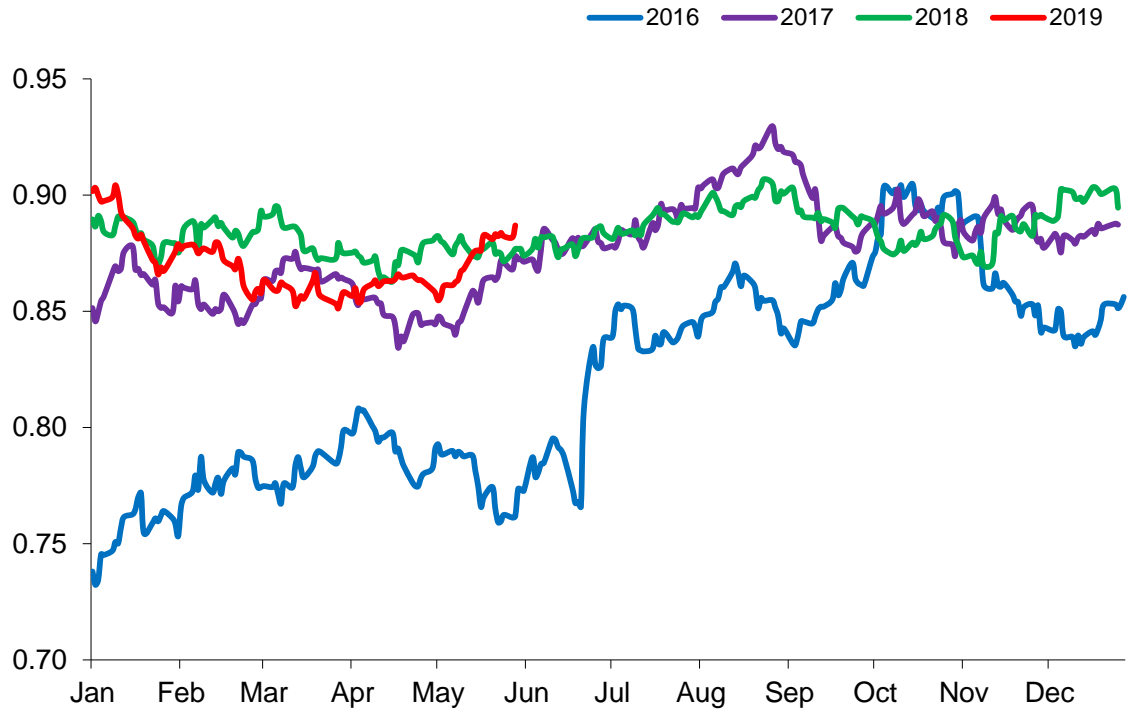
**52 Weeks to 1 June 2019**



Prices relate to UK Dressing Specification

Exchange Rate £ / Euro

01 January 2016 – 31 May 2019

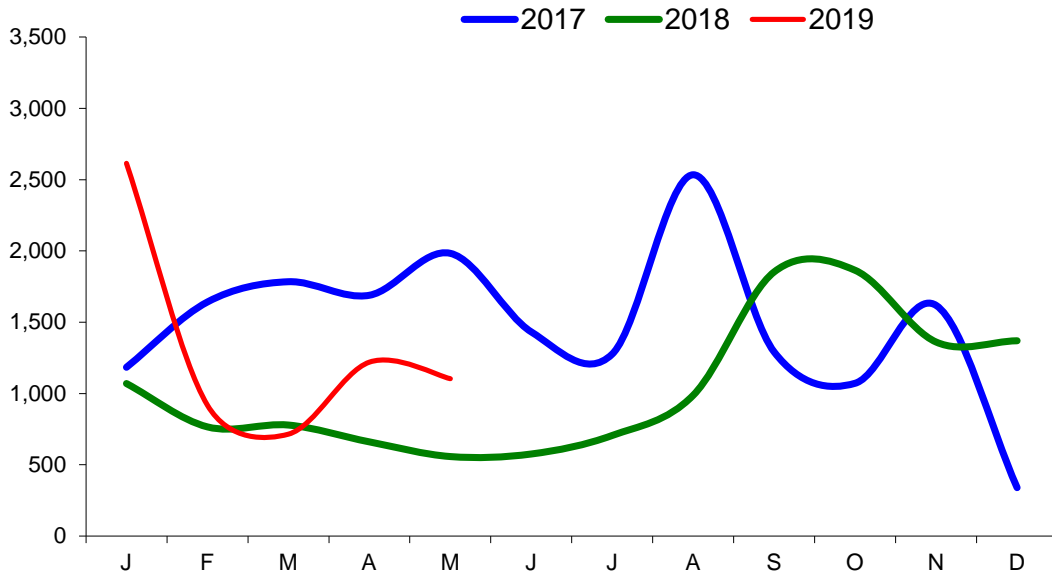




Imports

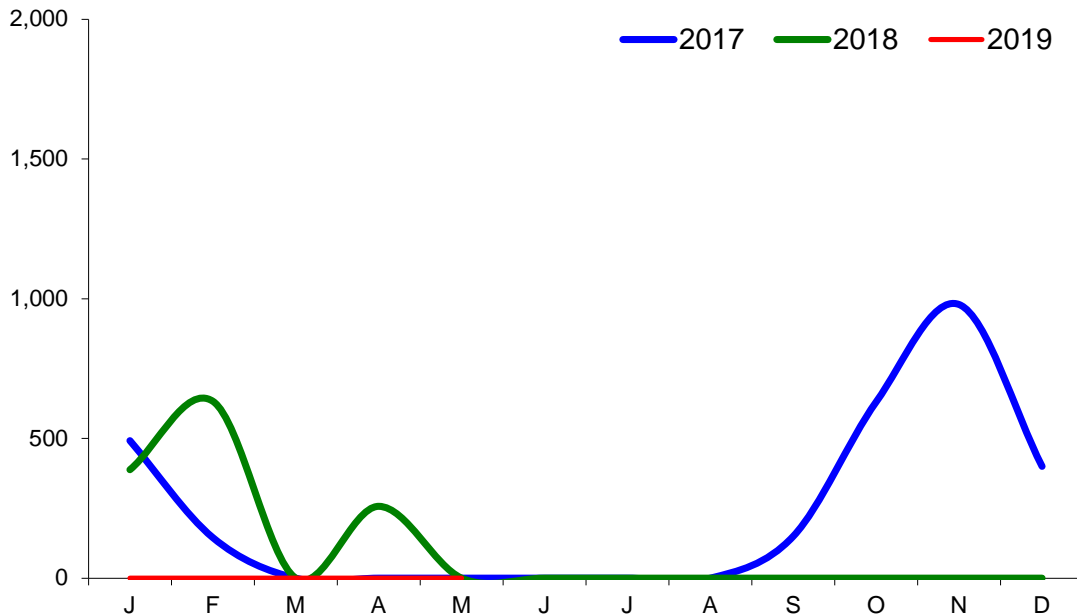
Monthly Live Imports of Cattle into NI for Direct Slaughter

From ROI and GB Combined



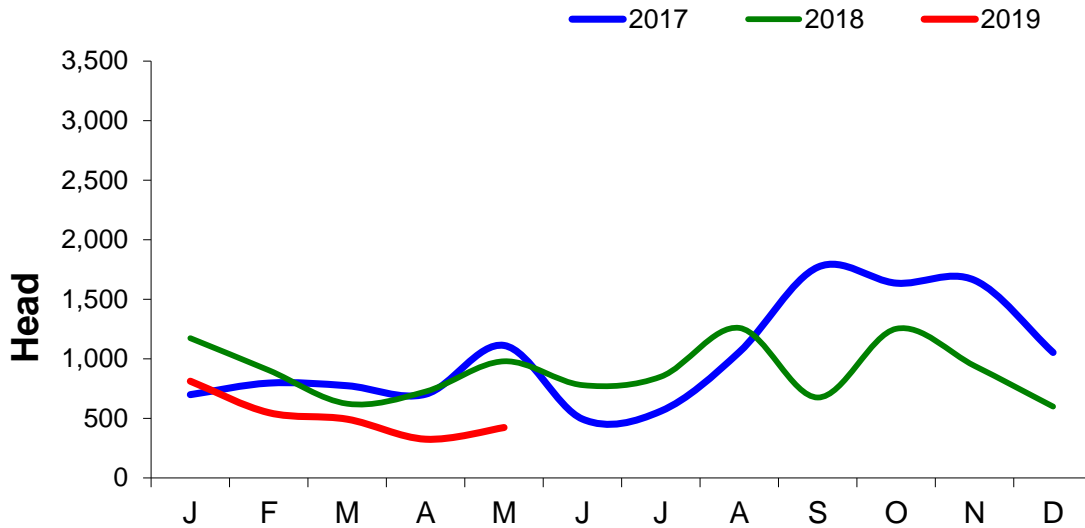
Monthly Live Imports of Sheep into NI for Direct Slaughter

From ROI and GB Combined



Exports

Monthly Live Exports of Cattle from NI into ROI and GB



Monthly Live Exports of Sheep from NI into ROI and GB

