



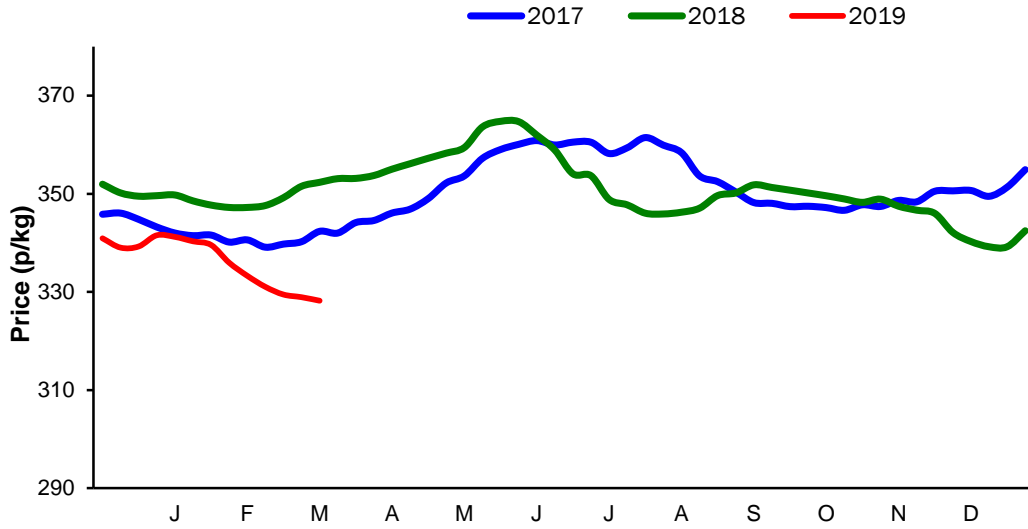
**Monthly Economic Review
March 2019**

Contents

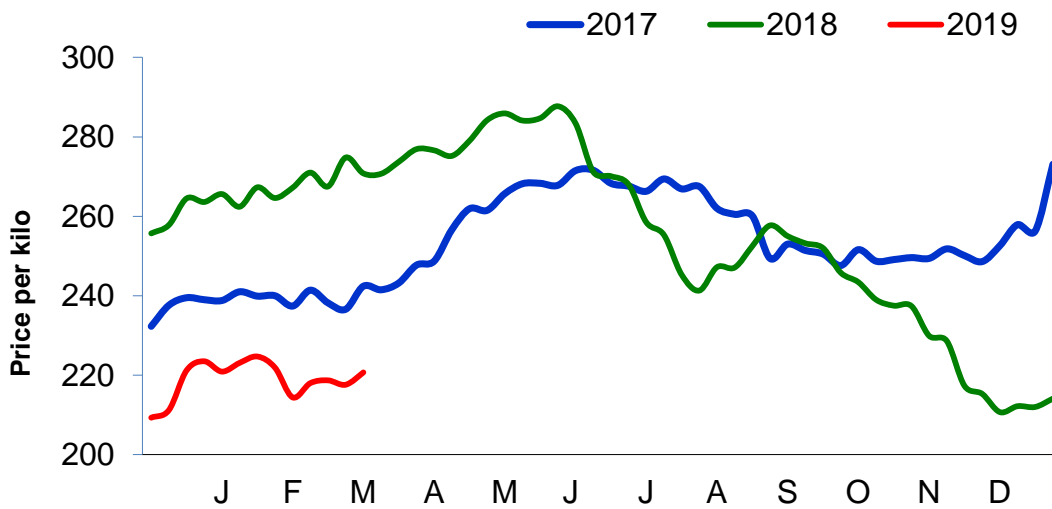
Contents.....	2
Cattle Prices	3
Average NI Clean Cattle Price	3
Average NI Cow Price.....	3
Cattle Slaughtering.....	4
NI Clean Cattle Slaughtering – Cumulative	4
NI Weekly Clean Cattle Slaughtering.....	4
NI Weekly Cow Slaughtering	5
Sheep Prices.....	6
Average NI Lamb / Hogget Price	6
Sheep Slaughtering.....	7
Cumulative Lamb & Hogget Slaughtering	7
Total Weekly Lamb & Hogget Slaughtering	7
Total Weekly Ewe and Ram Slaughtering.....	7
Total Carcase Weight Produced for the Food Chain.....	8
Change in Throughput / Production	9
Supply and Price.....	10
NI Lamb/Hogget Kill vs. Average Lamb / Hogget Price	10
NI Clean Cattle Kill vs. Average Clean Cattle Price.....	10
British Isles Price Comparisons	11
UK Average Cow Prices	11
Weekly UK Cow Prices	11
British Isles R3 Steer Price	12
British Isles R4 Steer Price	12
British Isles Average R3 and R4 Steer price	13
British Isles R3 Heifer Price	14
British Isles R4 Heifer Price	14
British Isles Average R3 and R4 Heifer price.....	15
Exchange Rate £ / Euro	16
Imports.....	17
Monthly Live Imports of Cattle into NI for Direct Slaughter	17
Monthly Live Imports of Sheep into NI for Direct Slaughter	17
Exports	18
Monthly Live Exports of Cattle from NI into RoI and GB.....	18
Monthly live Exports of Sheep from NI into RoI and GB	18

Cattle Prices

Average NI Clean Cattle Price

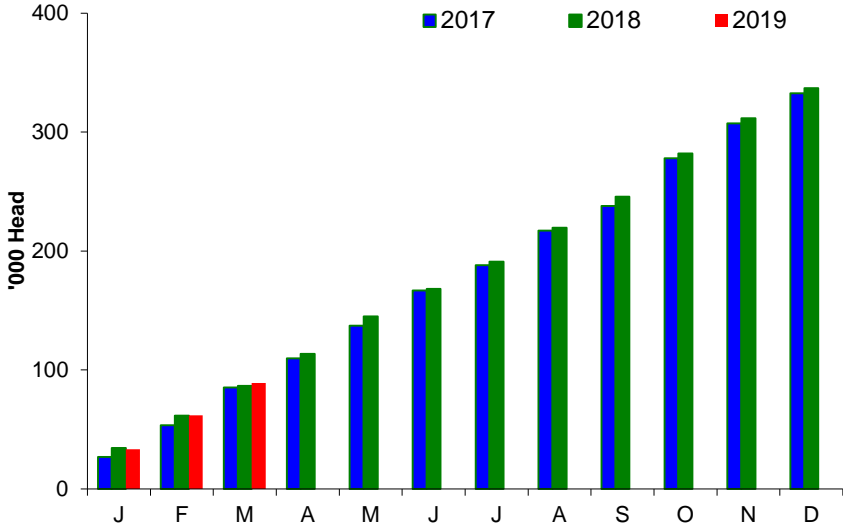


Average NI Cow Price

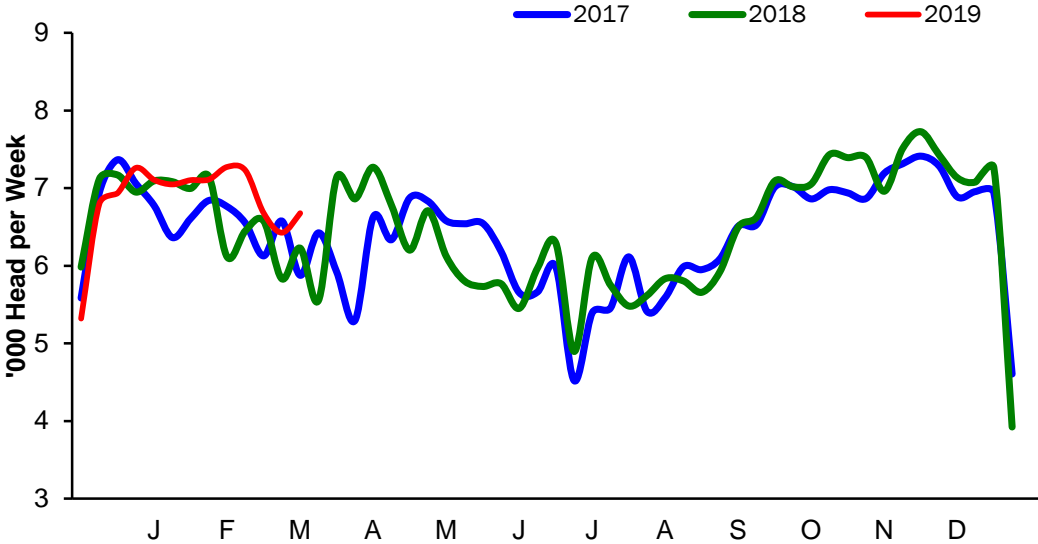


Cattle Slaughtering

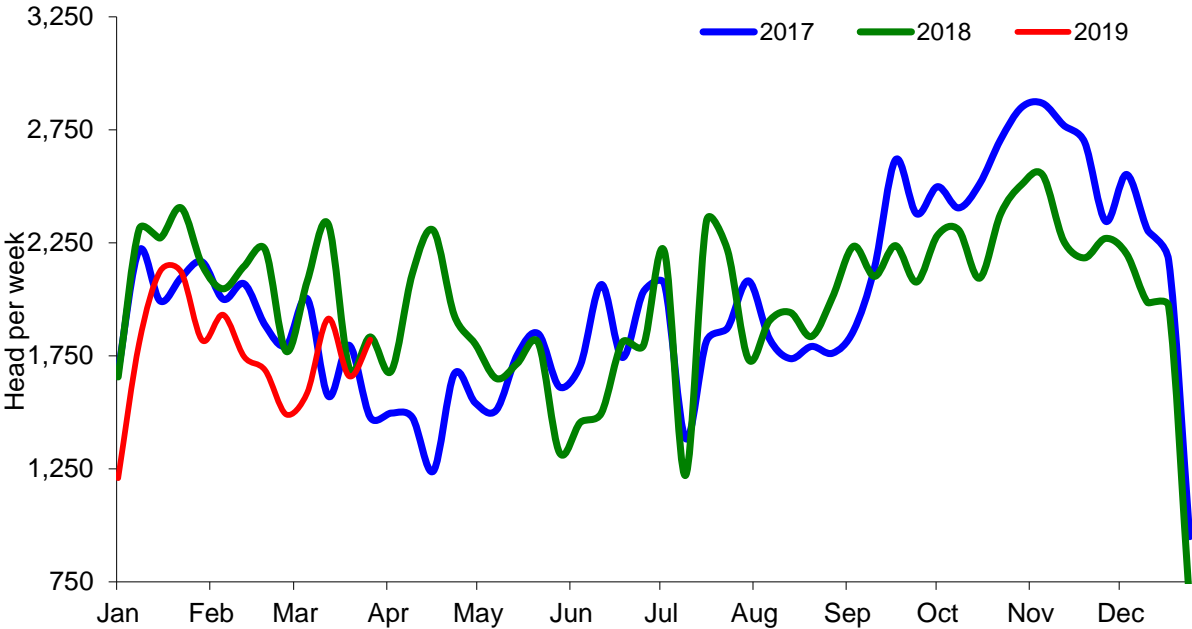
NI Clean Cattle Slaughtering – Cumulative



NI Weekly Clean Cattle Slaughtering

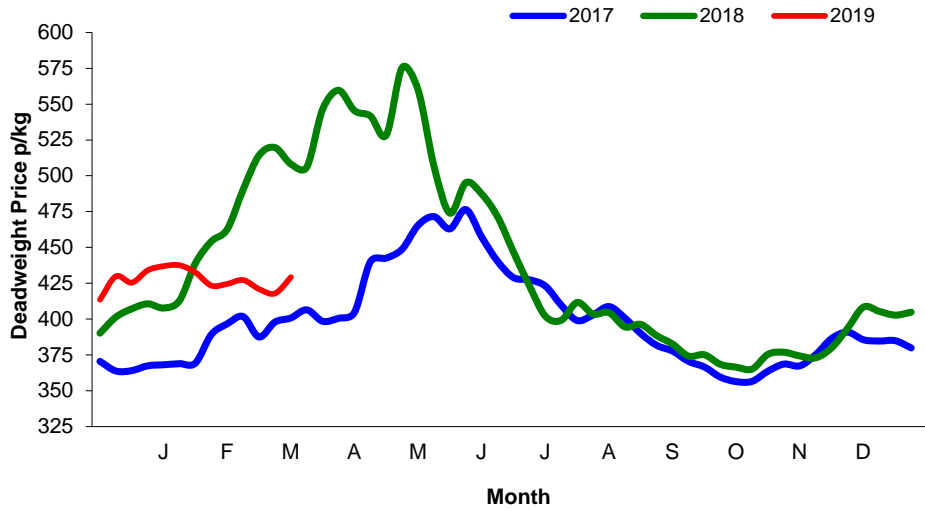


NI Weekly Cow Slaughtering



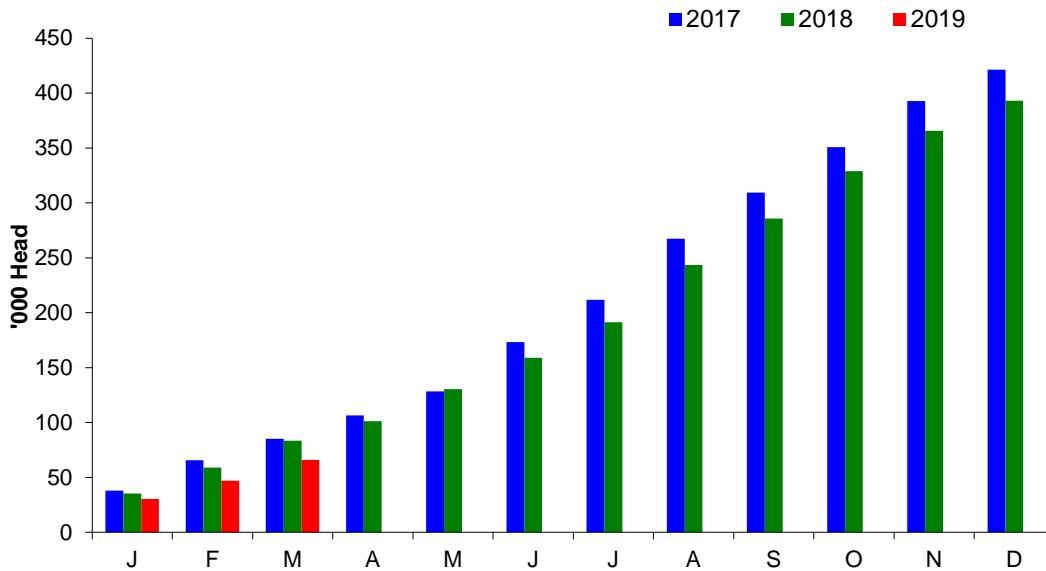
Sheep Prices

Average Deadweight NI Hogget / Lamb Price

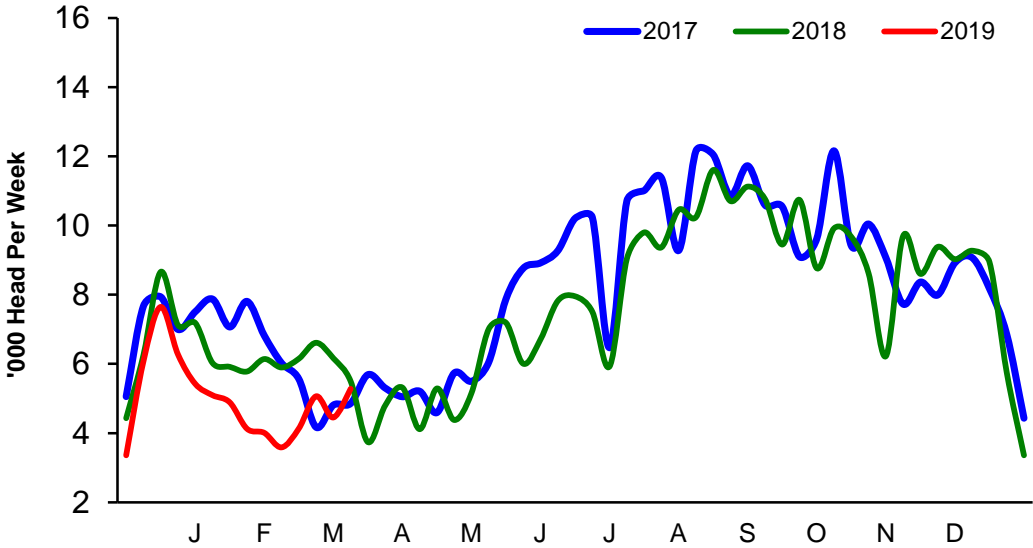


Sheep Slaughterings

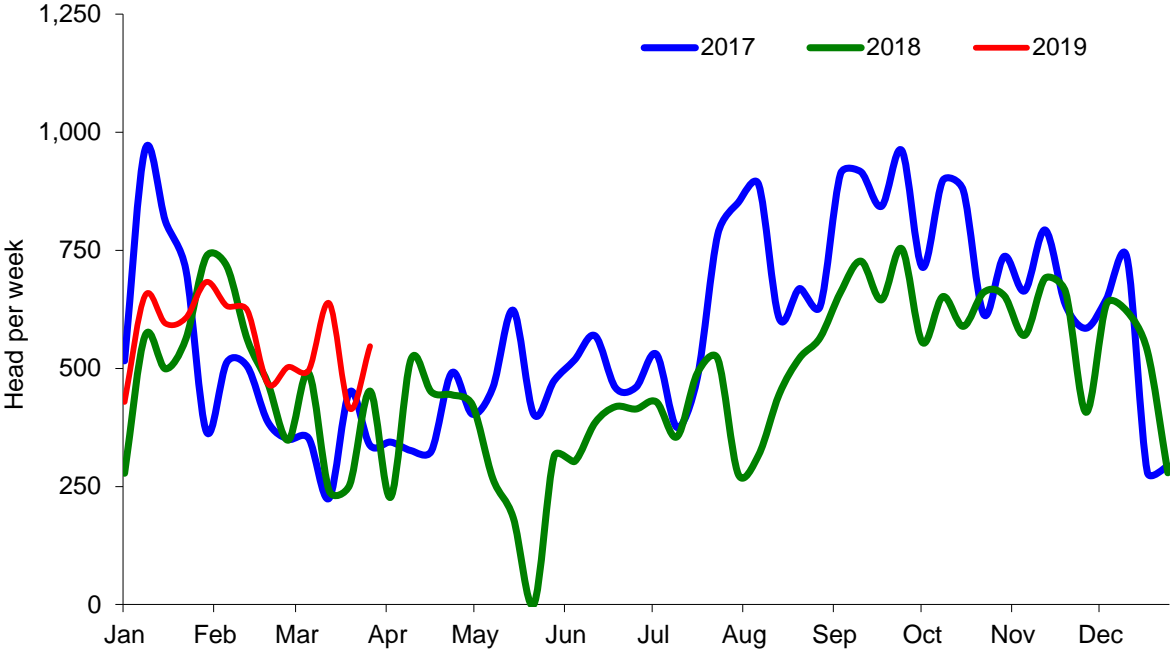
Cumulative Lamb & Hogget Slaughterings



Total Weekly Lamb & Hogget Slaughtering



Total Weekly Ewe and Ram Slaughtering



Market Information March 2019
Page 8

NI CATTLE AND SHEEP SLAUGHTERINGS FOR THE FOODCHAIN						
	March			Year to Date		
	(4 weeks ended 30/03/19)			(13 weeks ended 30/03/19)		
	Mar-18	Mar-19	% Change	2018	2019	Change
CATTLE						
Steers	12,033	12,956	+8%	42,350	41,763	-1%
Heifers	10,196	11,144	+9%	35,609	37,374	+5%
Young Bulls	2,857	2,910	+2%	8,779	9,829	+12%
Total Prime Cattle	25,086	27,010	+8%	86,738	88,966	+3%
Calves	449	497	+11%	1,570	1,571	+0%
Cows	7,943	6,984	-12%	26,924	22,920	-15%
Mature Bulls	259	289	+12%	875	979	+12%
Total Cattle	33,737	34,780	+3%	116,107	114,436	-1%
SHEEP						
Lambs & Hoggets	24,424	18,924	-23%	83,402	66,040	-21%
Ewes & Rams	1,436	2,096	+46%	6,176	7,290	+18%
Total Sheep	25,860	21,020	-19%	89,578	73,330	-18%
The above figures are provisional; any amendments will be incorporated in the cumulative data (source DAERA).						

NI BEEF AND SHEEPMEAT PRODUCTION - FOODCHAIN						
	March			Year to Date		
	(4 weeks ended 30/03/19)			(13 weeks ended 30/03/19)		
	Mar-18	Mar-19	% Change	2018	2019	Change
BEEF						
Steers	4,212	4,668	+11%	14,929	15,035	+1%
Heifers	3,205	3,597	+12%	11,290	12,082	+7%
Young Bulls	934	978	+5%	2,869	3,314	+15%
Total Prime Beef	8,351	9,243	+11%	29,088	30,430	+5%
Calves	90	100	+12%	301	316	+5%
Cows	2,374	2,134	-10%	8,072	7,056	-13%
Mature Bulls	109	123	+12%	378	416	+10%
Total Beef	10,924	11,600	+6%	37,839	38,219	+1%
SHEEPMEAT						
Lambs & Hoggets	534	440	-18%	1,813	1,520	-16%
Ewes & Rams	40	61	+51%	165	213	+29%
Total Sheepmeat	574	501	-13%	1,978	1,733	-12%
The above figures are provisional; any amendments will be incorporated in the cumulative data (source DAERA).						

Market Information March 2019
Page 9

Total Carcase Weight Produced for the Food Chain
Year-to-Date (tonnes – t.)

Month	Prime Cattle		Cows & Bulls		Lambs/Hoggets		Ewes & Rams	
	2018	2019	2018	2019	2018	2019	2018	2019
January	11,543	11,378	3,406	2,966	764	698	73	87
February	9,194	9,808	2,560	2,249	515	381	53	65
March	8,351	9,243	2,484	2,257	534	440	40	61
April								
May								
June								
July								
August								
September								
October								
November								
December								
Total	29,088	30,429	8,450	7,472	1,813	1,519	166	213
Change (t.)	1,341		-977		-294		48	
% Change	4.61%		-11.57%		-16.21%		28.91%	

**excludes calves*

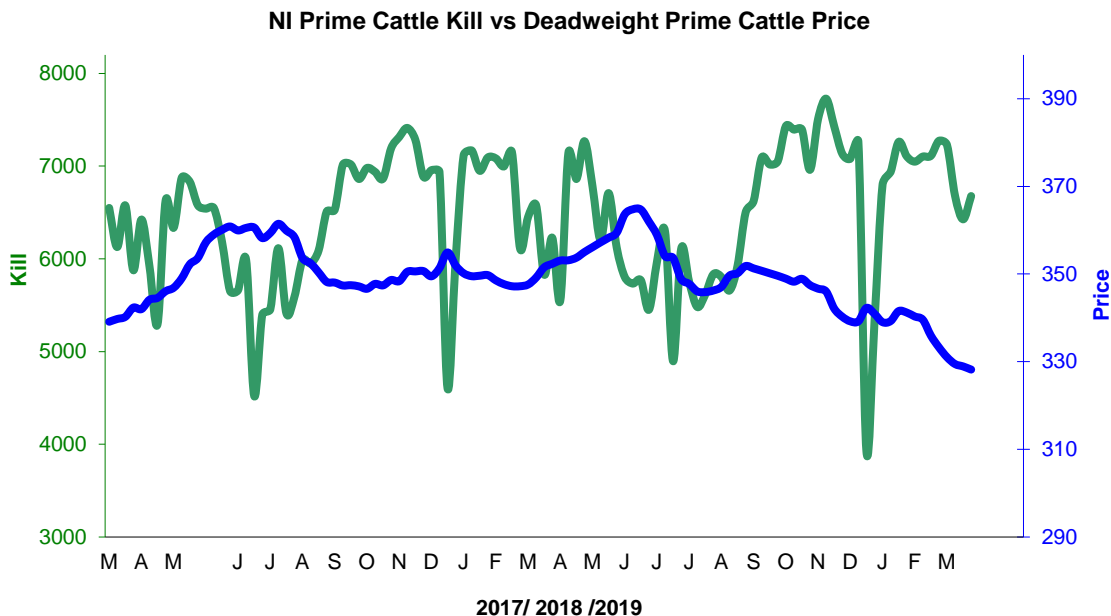
Change in Throughput / Production

Last 4 weeks 2018/2019

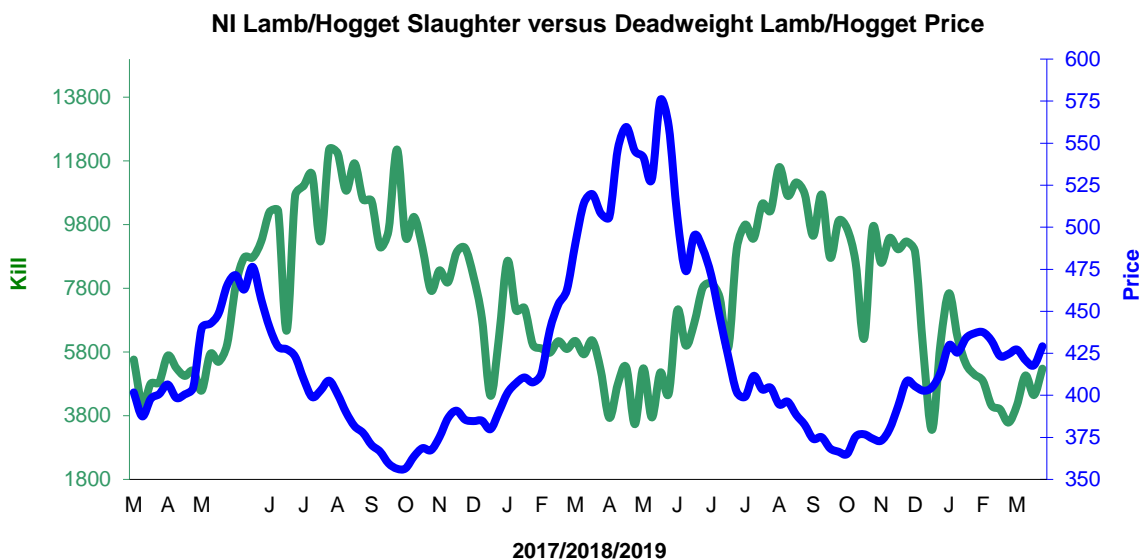
Change in Throughput / Production 2018/2019			
March			
2018/2019	Number	Tonnage	ACW Kg
Prime	7.7%	10.7%	9.26
Cows	-12.1%	-10.1%	6.64
Total	3.1%	6.2%	9.98
Lamb	-22.5%	-17.6%	1.37
Ewes and Rams	46.0%	51.3%	1.05
Total Sheep	-18.7%	-12.7%	1.60

Supply and Price

NI Clean Cattle Kill vs. Average Clean Cattle Price



NI Lamb/Hogget Kill vs. Average Lamb / Hogget Price

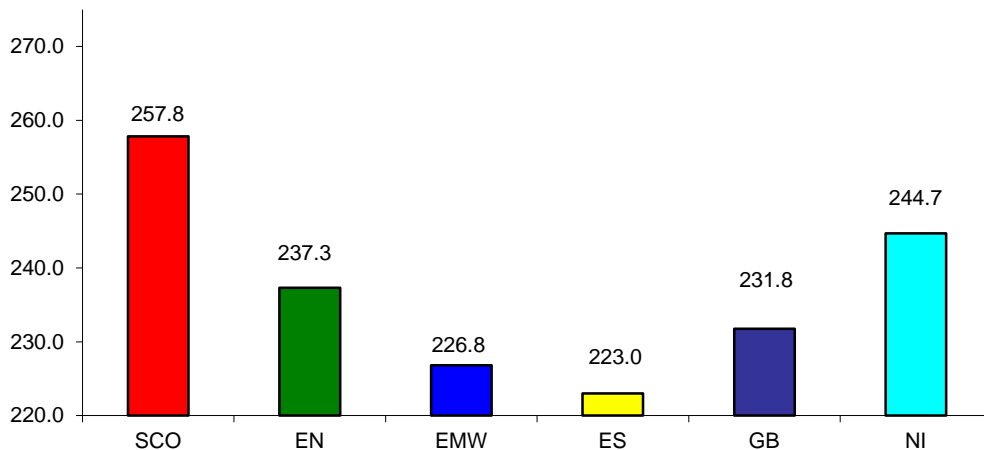


Green	Supply (Kill)
Blue	Price

BRITISH ISLES COMPARISONS

UK Average Cow Prices

52 Weeks to 30 March 2019

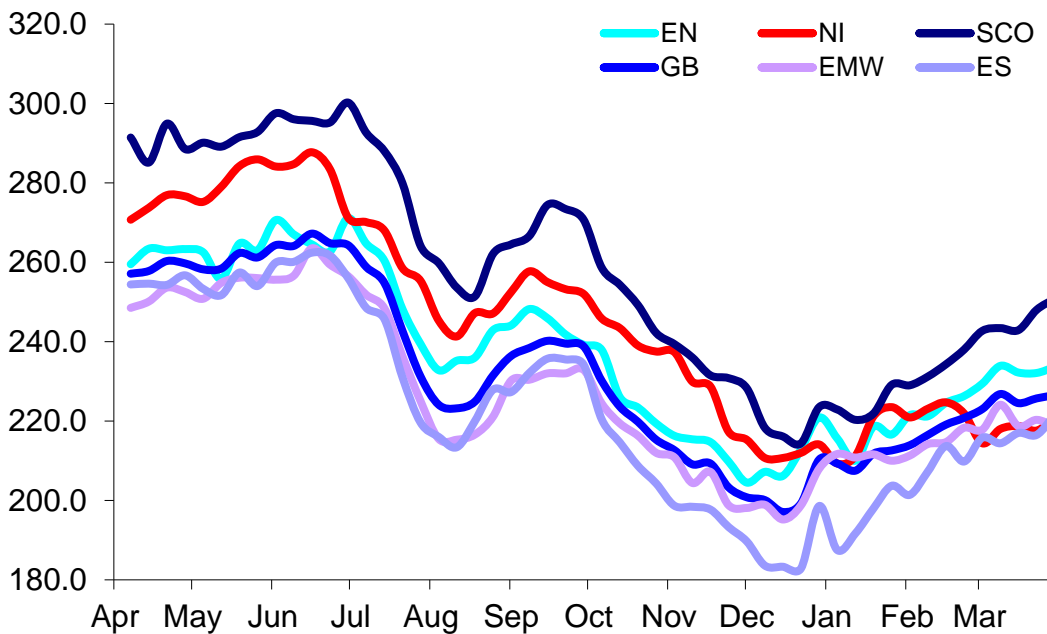


SCO	Scotland
EN	England North
EMW	England Midlands and Wales
ES	England South
NI	Northern Ireland
GB	Great Britain

Prices relate to UK Dressing Specification

Weekly UK Cow Prices

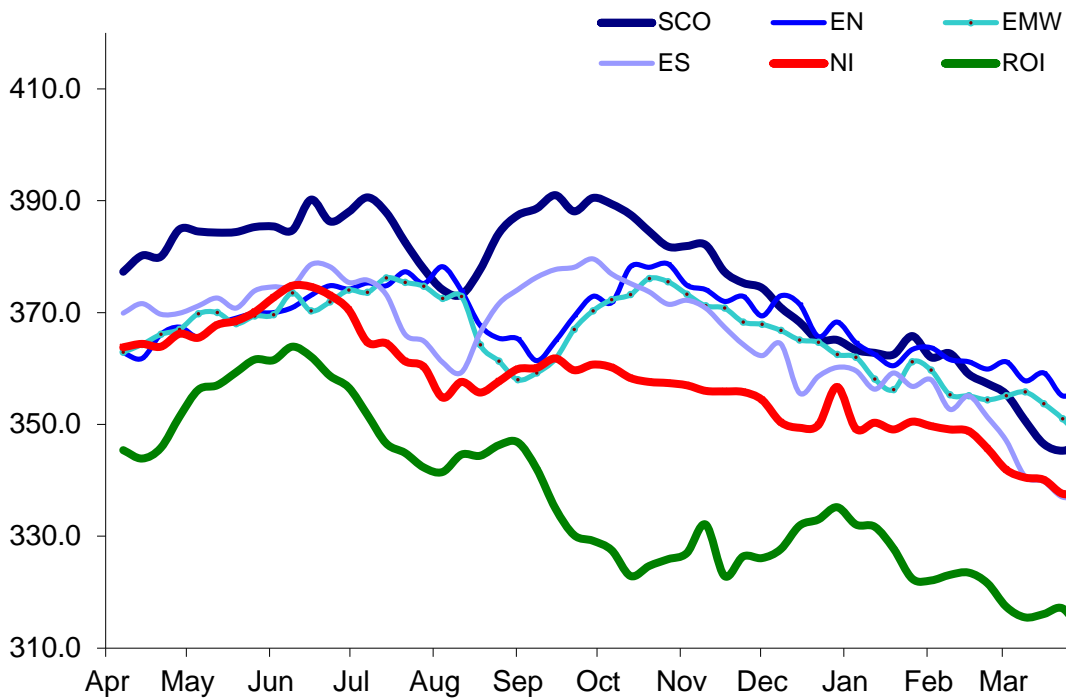
52 Weeks to 30 March 2019



Prices relate to UK Dressing Specification

British Isles R3 Steer Price

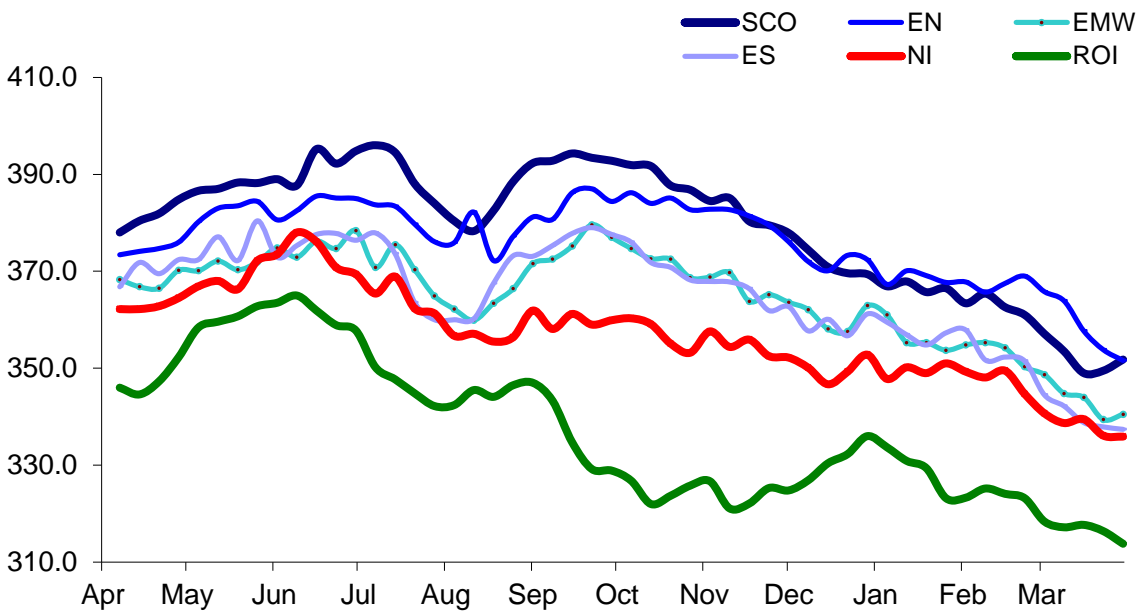
52 Weeks to 30 March 2019



Prices relate to UK Dressing Specification

British Isles R4 Steer Price

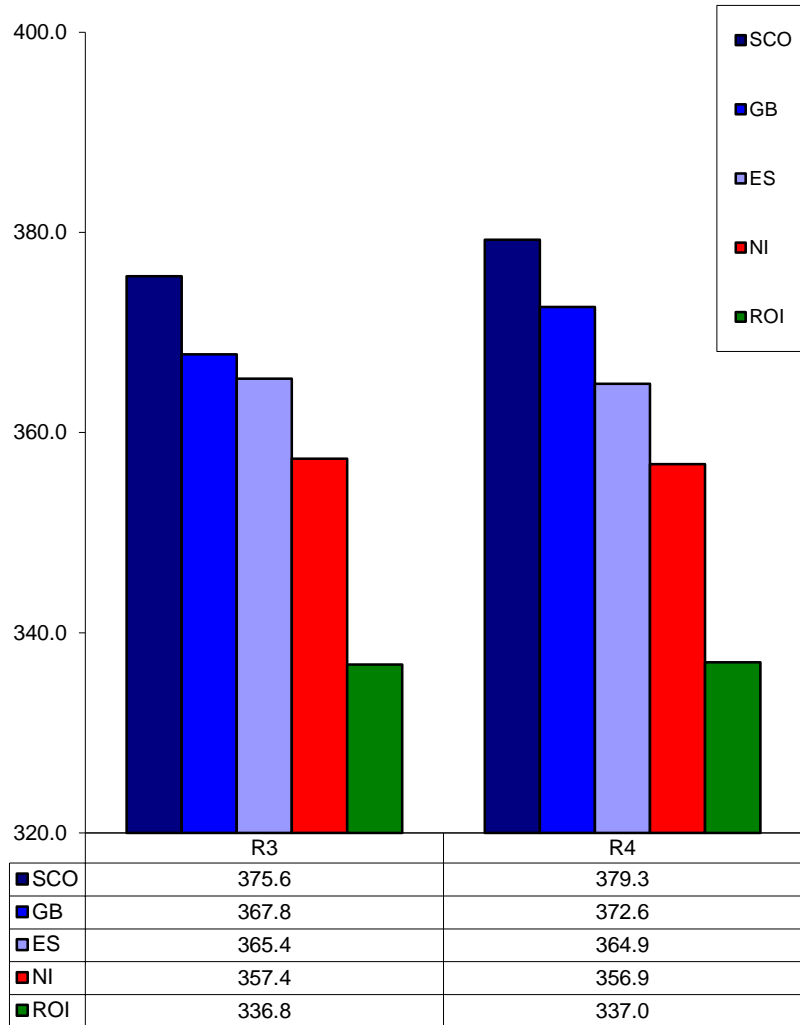
52 Weeks to 30 March 2019



Prices relate to UK Dressing Specification

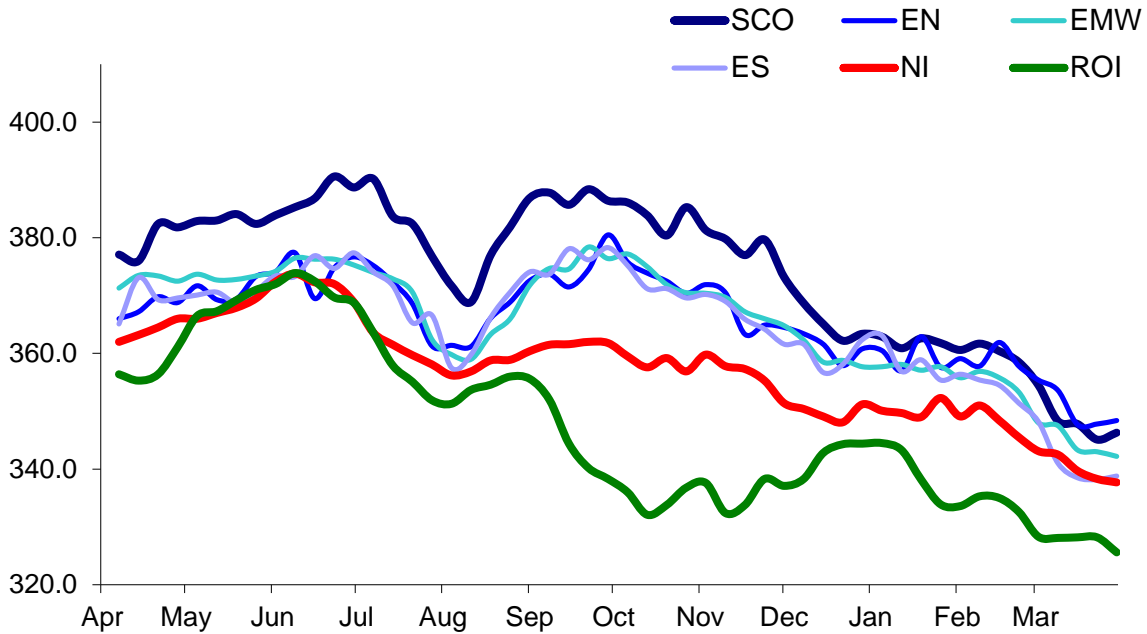
British Isles Average R3 and R4 Steer price

52 Weeks to 30 March 2019



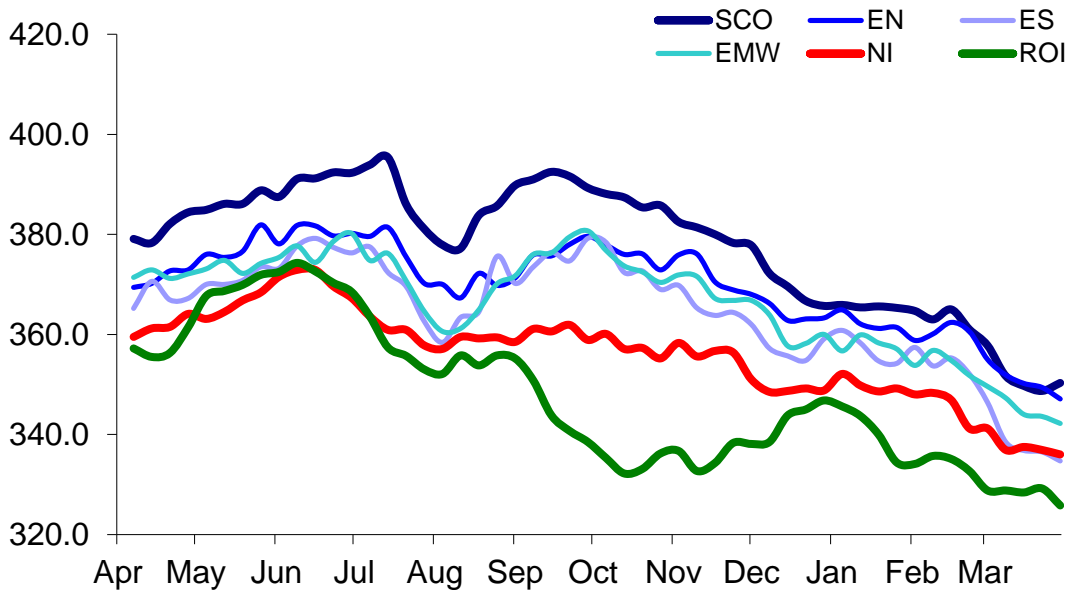
Prices relate to UK Dressing Specification

British Isles R3 Heifer Price
52 Weeks to 30 March 2019



Prices relate to UK Dressing Specification

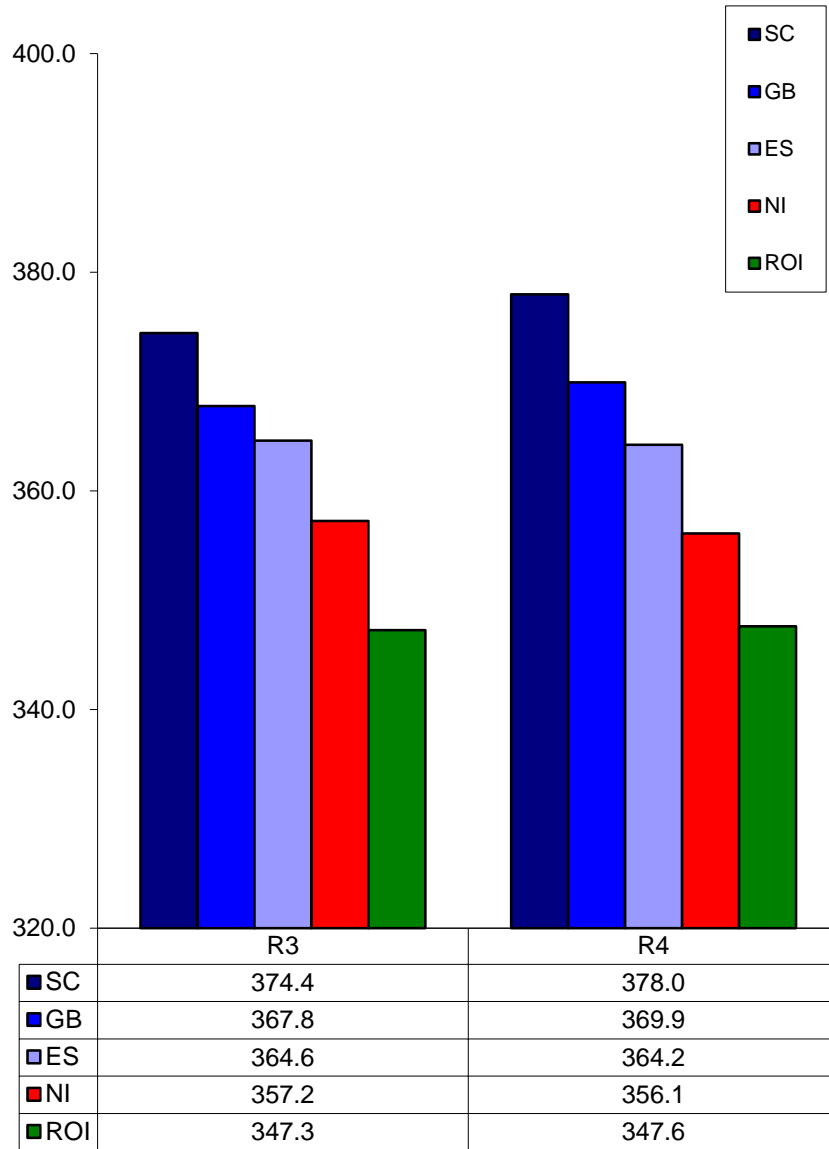
British Isles R4 Heifer Price
52 Weeks to 30 March 2019



Prices relate to UK Dressing Specification

British Isles Average R3 and R4 Heifer price

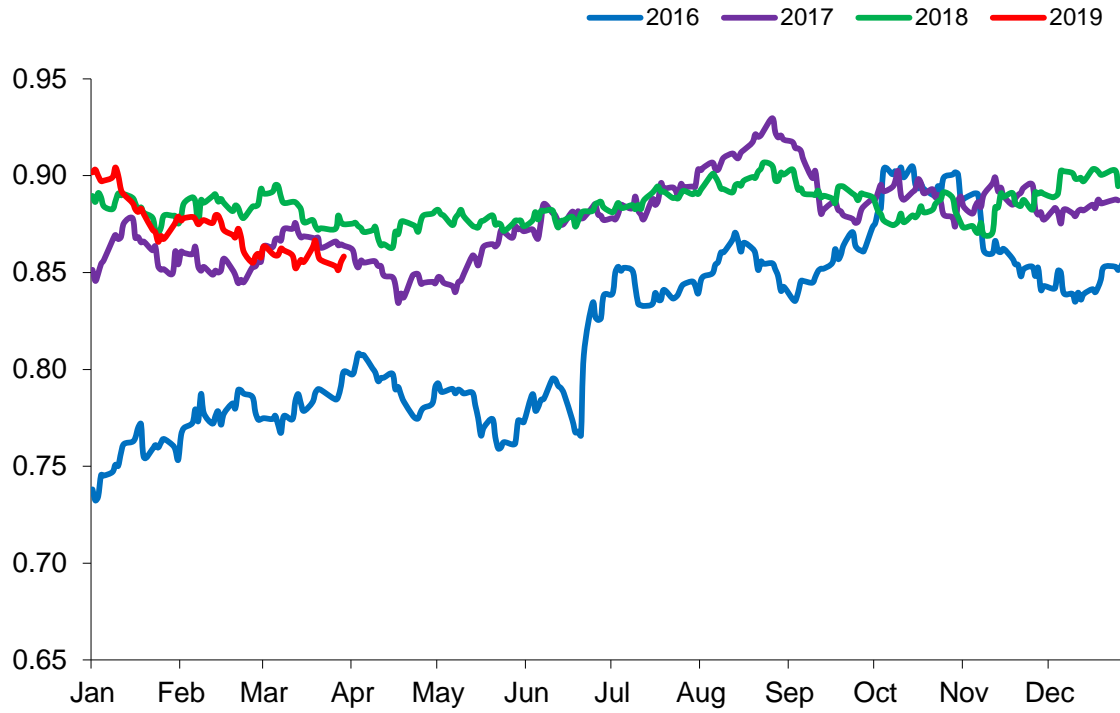
52 Weeks to 30 March 2019



Prices relate to UK Dressing Specification

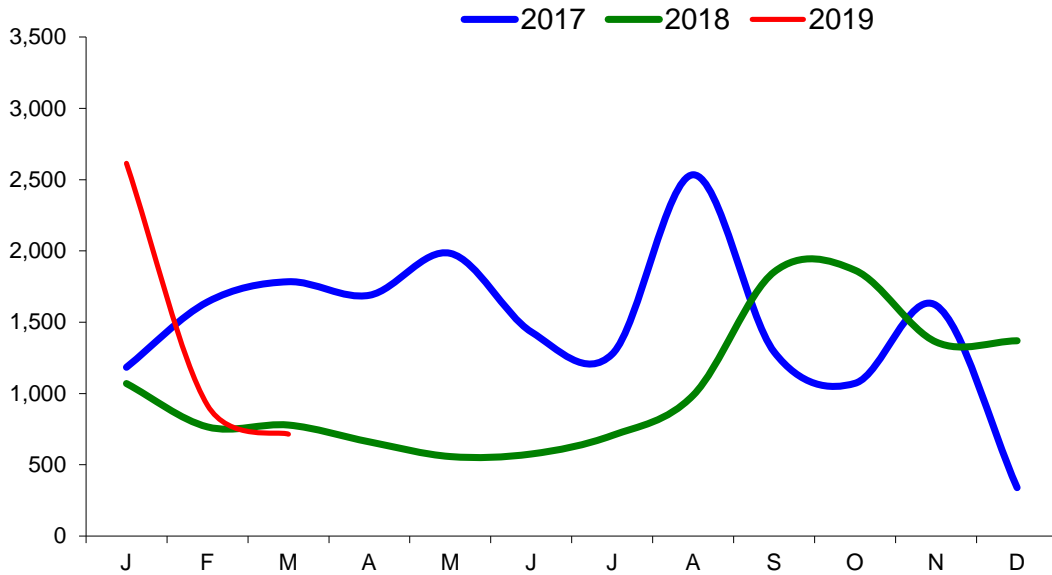
Exchange Rate £ / Euro

01 January 2016 – 31 March 2019

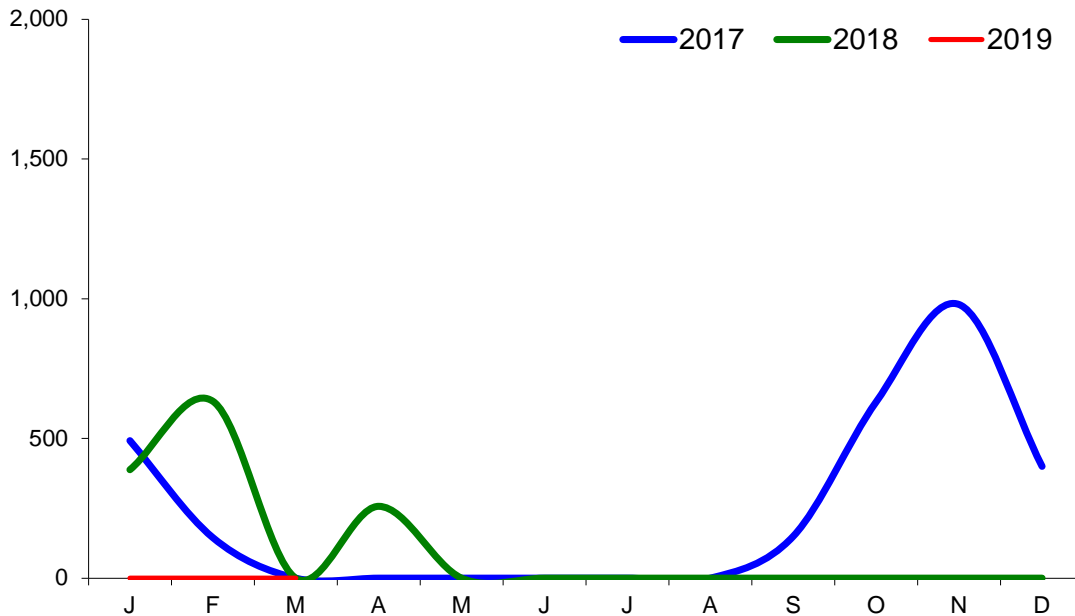


Imports

Monthly Live Imports of Cattle into NI for Direct Slaughter
From ROI and GB Combined

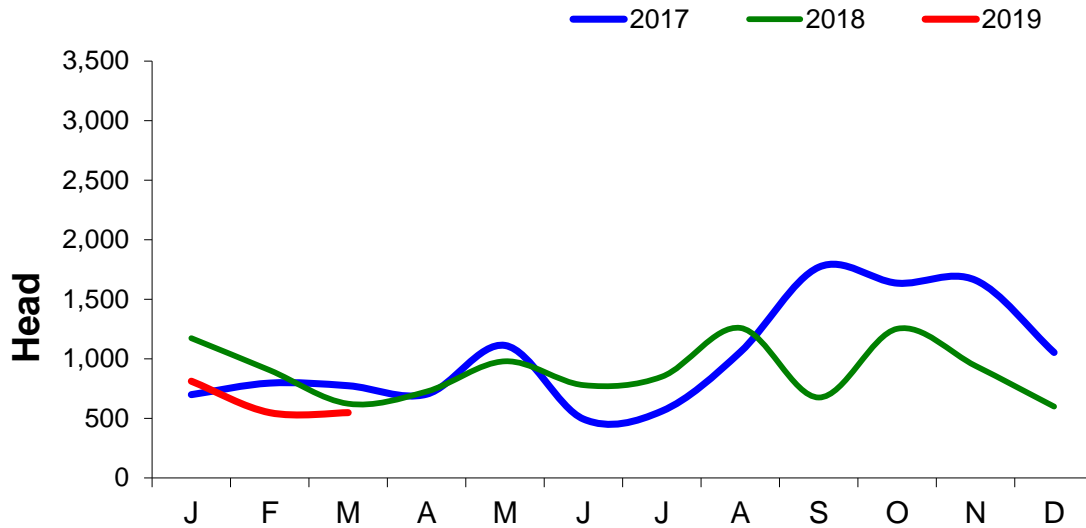


Monthly Live Imports of Sheep into NI for Direct Slaughter
From ROI and GB Combined



Exports

Monthly Live Exports of Cattle from NI into ROI and GB



Monthly Live Exports of Sheep from NI into ROI and GB

