



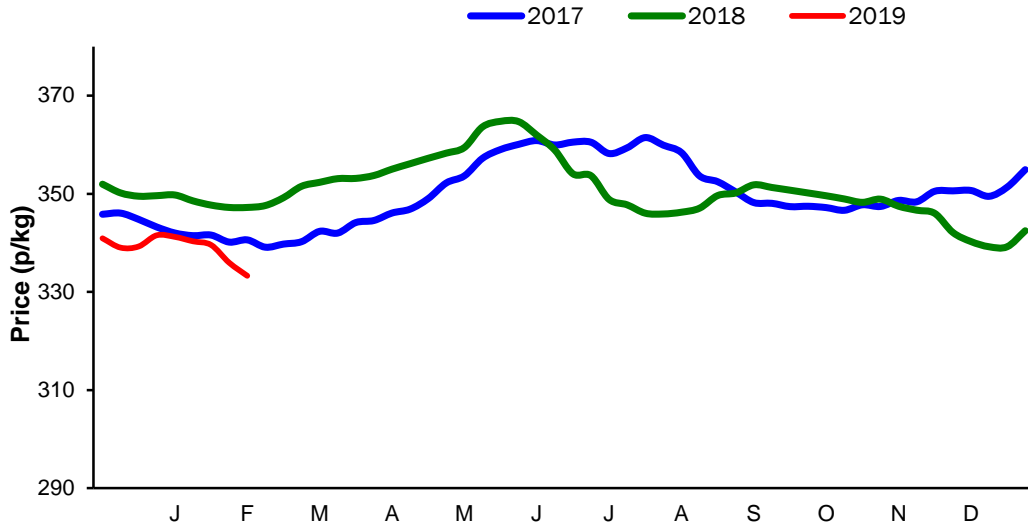
**Monthly Economic Review
February 2019**

Contents

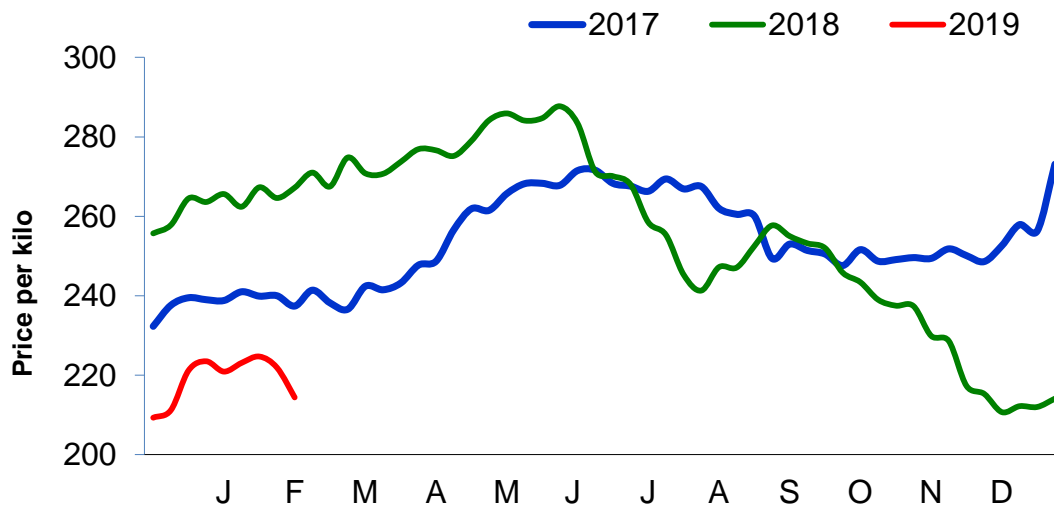
Contents.....	2
Cattle Prices	3
Average NI Clean Cattle Price	3
Average NI Cow Price.....	3
Cattle Slaughtering.....	4
NI Clean Cattle Slaughtering – Cumulative	4
NI Weekly Clean Cattle Slaughtering.....	4
NI Weekly Cow Slaughtering	5
Sheep Prices.....	6
Average NI Lamb / Hogget Price	6
Sheep Slaughtering.....	7
Cumulative Lamb & Hogget Slaughtering	7
Total Weekly Lamb & Hogget Slaughtering	7
Total Weekly Ewe and Ram Slaughtering.....	7
Total Carcase Weight Produced for the Food Chain.....	8
Change in Throughput / Production	9
Supply and Price.....	10
NI Lamb/Hogget Kill vs. Average Lamb / Hogget Price	10
NI Clean Cattle Kill vs. Average Clean Cattle Price.....	10
British Isles Price Comparisons	11
UK Average Cow Prices	11
Weekly UK Cow Prices	11
British Isles R3 Steer Price	12
British Isles R4 Steer Price	12
British Isles Average R3 and R4 Steer price	13
British Isles R3 Heifer Price	14
British Isles R4 Heifer Price	14
British Isles Average R3 and R4 Heifer price.....	15
Exchange Rate £ / Euro	16
Imports.....	17
Monthly Live Imports of Cattle into NI for Direct Slaughter	17
Monthly Live Imports of Sheep into NI for Direct Slaughter	17
Exports	18
Monthly Live Exports of Cattle from NI into RoI and GB.....	18
Monthly live Exports of Sheep from NI into RoI and GB	18

Cattle Prices

Average NI Clean Cattle Price

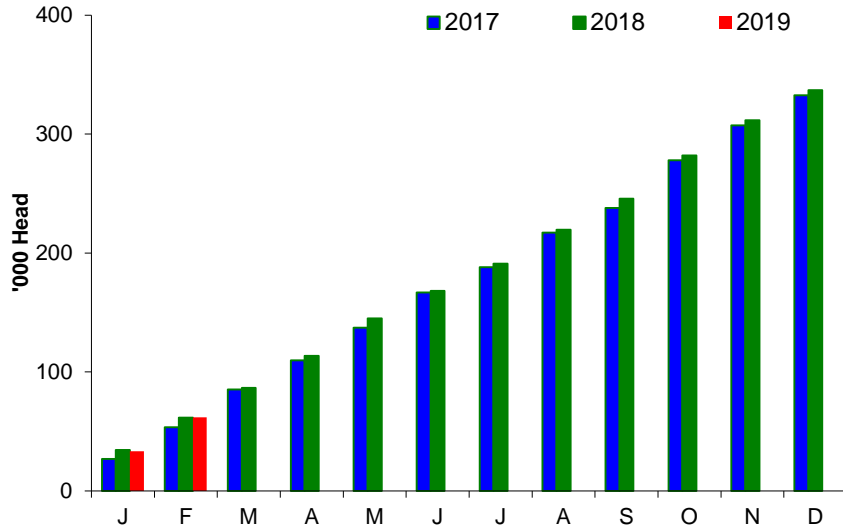


Average NI Cow Price

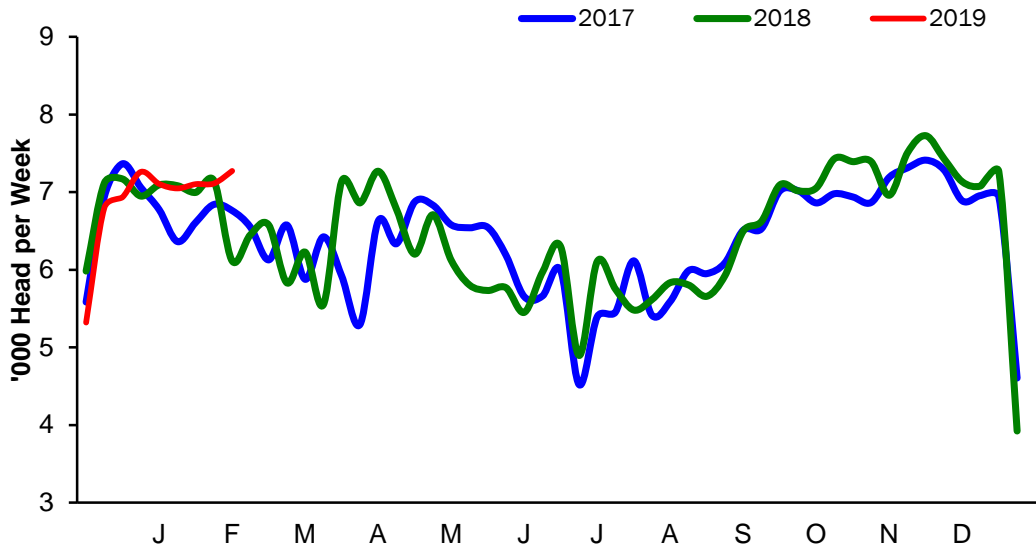


Cattle Slaughtering

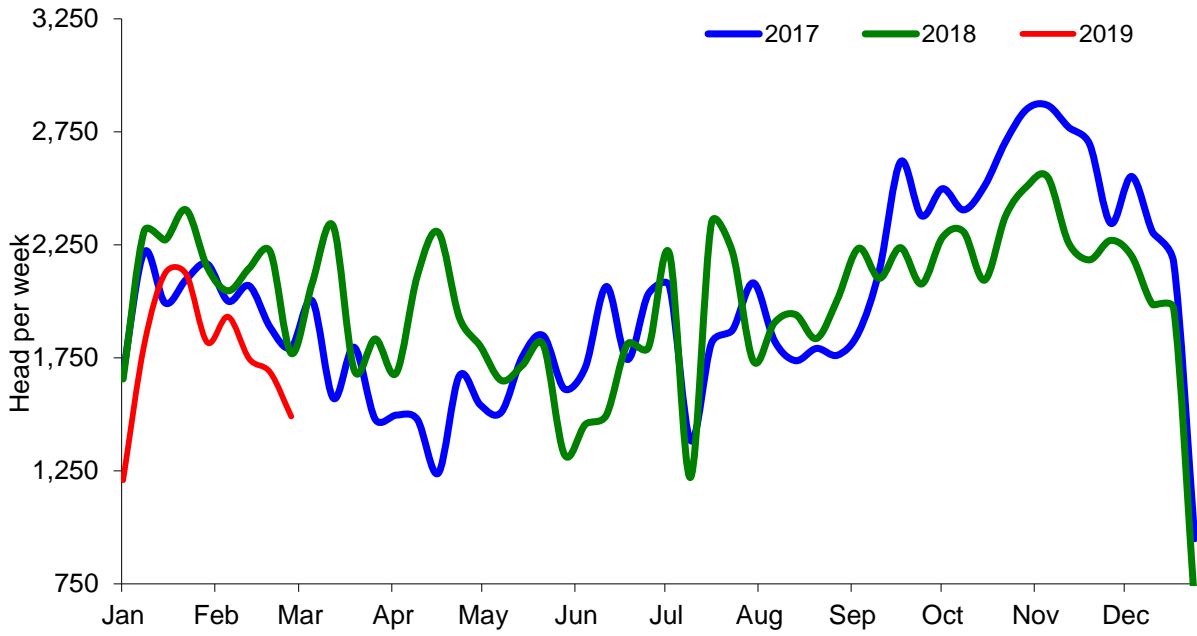
NI Clean Cattle Slaughtering – Cumulative



NI Weekly Clean Cattle Slaughtering

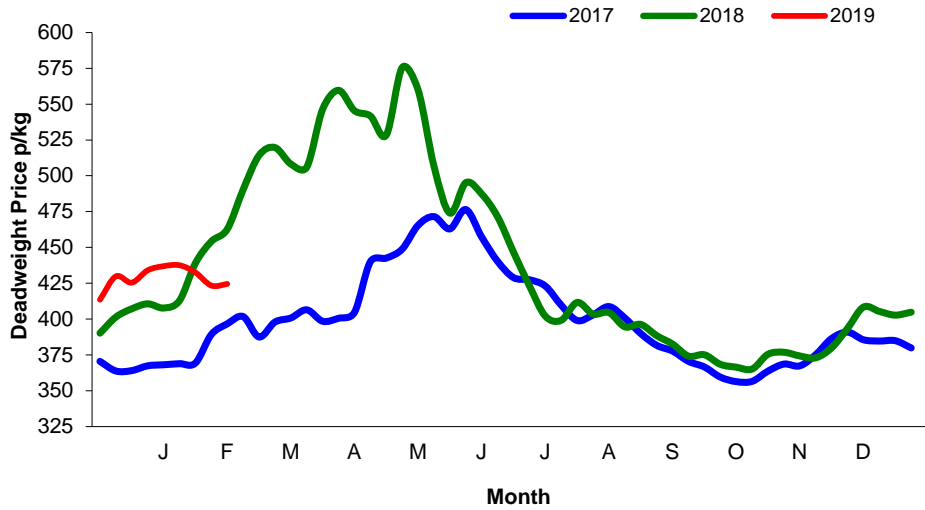


NI Weekly Cow Slaughtering



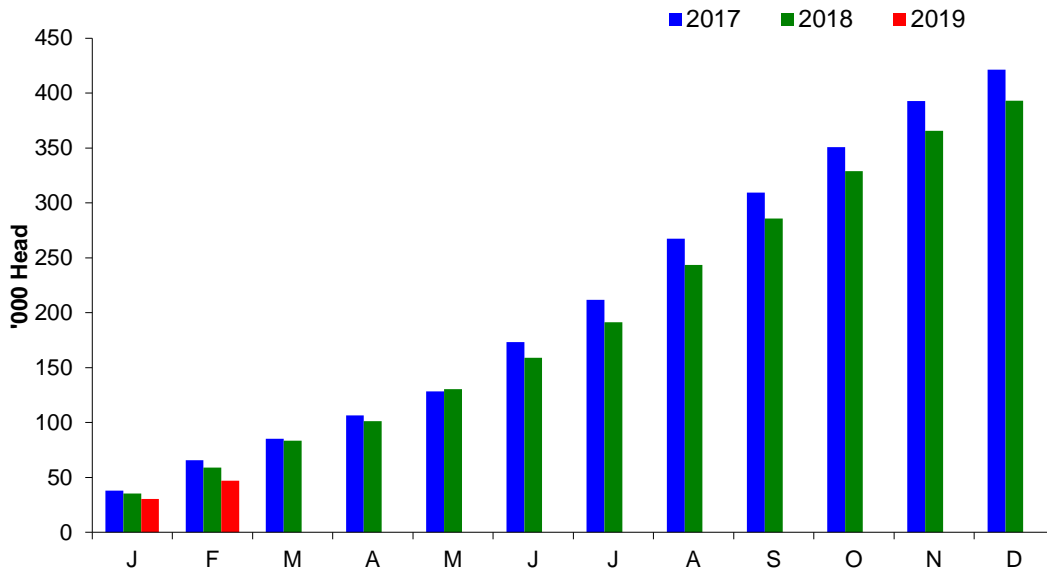
Sheep Prices

Average Deadweight NI Hogget / Lamb Price

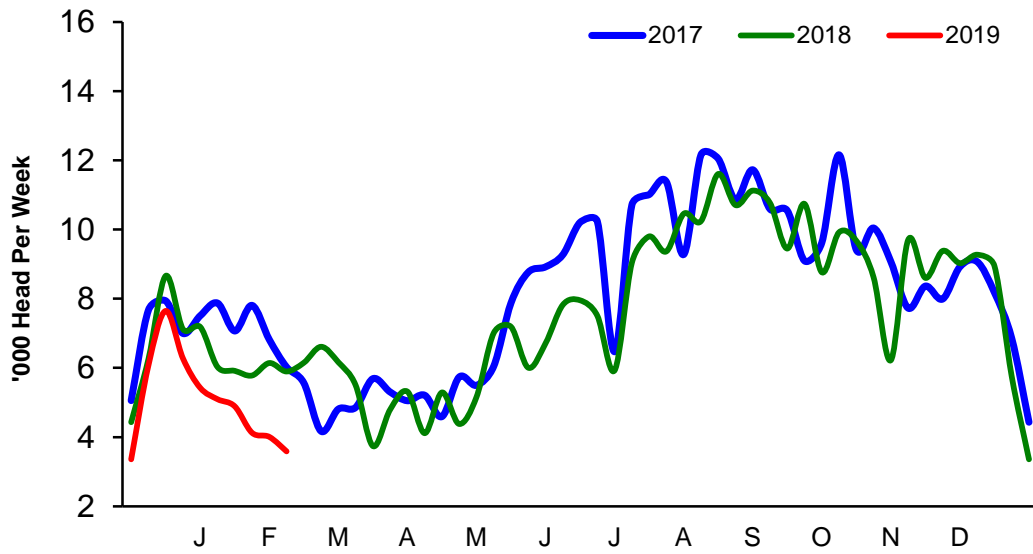


Sheep Slaughterings

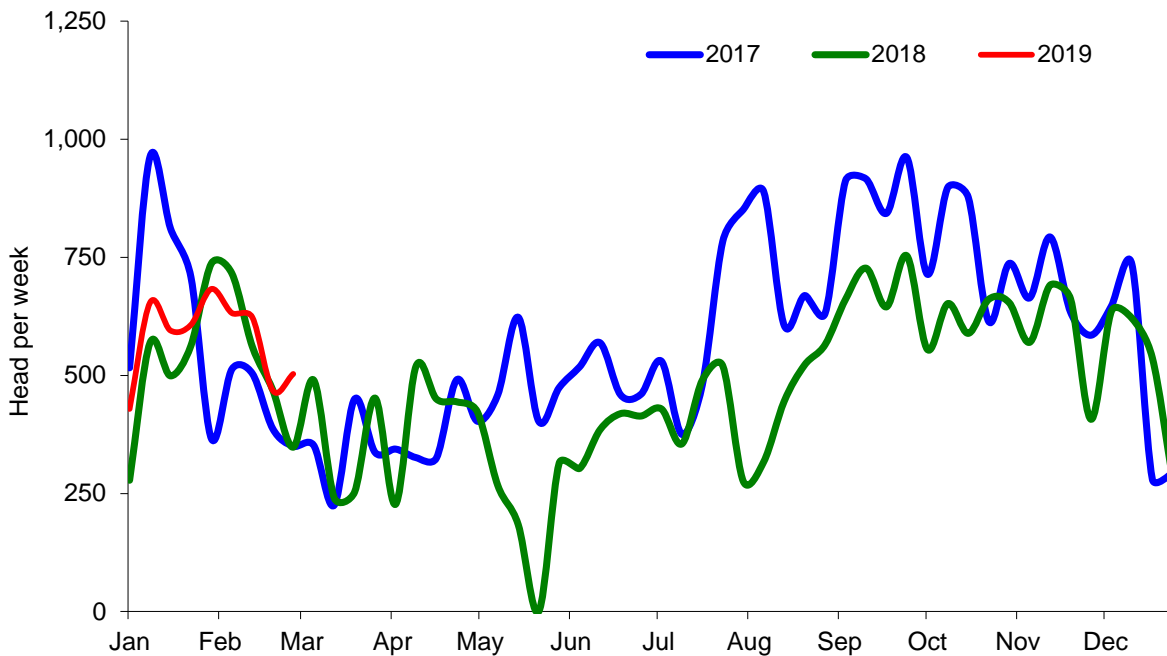
Cumulative Lamb & Hogget Slaughterings



Total Weekly Lamb & Hogget Slaughtering



Total Weekly Ewe and Ram Slaughtering



Market Information February 2019
Page 8

NI CATTLE AND SHEEP SLAUGHTERINGS FOR THE FOODCHAIN						
	February			Year to Date		
	(4 weeks ended 02/03/19)			(9 weeks ended 02/03/19)		
	Feb-18	Feb-19	% Change	2018	2019	Change
CATTLE						
Steers	13,443	13,221	-2%	30,317	28,807	-5%
Heifers	11,134	12,197	+10%	25,413	26,230	+3%
Young Bulls / Calves	2,764	3,117	+13%	5,922	6,919	+17%
Total Prime Cattle	27,341	28,535	+4%	61,652	61,956	+0%
Calves	559	550	-2%	1,121	1,074	-4%
Cows	8,184	6,855	-16%	18,981	15,936	-16%
Mature Bulls	267	298	+12%	616	690	+12%
Total Cattle	36,351	36,238	-0%	82,370	79,656	-3%
SHEEP						
Lambs & Hoggets	23,732	16,604	-30%	58,978	47,116	-20%
Ewes & Rams	2,094	2,226	+6%	4,740	5,194	+10%
Total Sheep	25,826	18,830	-27%	63,718	52,310	-18%
The above figures are provisional; any amendments will be incorporated in the cumulative data (source DAERA).						

NI BEEF AND SHEEPMEAT PRODUCTION - FOODCHAIN						
	February			Year to Date		
	(4 weeks ended 02/03/19)			(9 weeks ended 02/03/19)		
	Feb-18	Feb-19	% Change	2018	2019	Change
BEEF						
Steers	4,740	4,778	+1%	10,716	10,367	-3%
Heifers	3,548	3,980	+12%	8,086	8,484	+5%
Young Bulls	906	1,051	+16%	1,936	2,336	+21%
Total Prime Beef	9,194	9,808	+7%	20,737	21,187	+2%
Calves	108	111	+3%	211	216	+2%
Cows	2,448	2,124	-13%	5,698	4,922	-14%
Mature Bulls	112	125	+11%	268	293	+9%
Total Beef	11,862	12,168	+3%	26,914	26,618	-1%
SHEEPMEAT						
Lambs & Hoggets	515	381	-26%	1,279	1,079	-16%
Ewes & Rams	53	65	+23%	125	152	+22%
Total Sheepmeat	567	446	-21%	1,404	1,231	-12%
The above figures are provisional; any amendments will be incorporated in the cumulative data (source DAERA).						

Market Information February 2019
Page 9

Total Carcase Weight Produced for the Food Chain
Year-to-Date (tonnes – t.)

Month	Prime Cattle		Cows & Bulls		Lambs/Hoggets		Ewes & Rams	
	2018	2019	2018	2019	2018	2019	2018	2019
January	11,543	11,378	3,406	2,966	764	698	73	87
February	9,194	9,808	2,560	2,249	515	381	53	65
March								
April								
May								
June								
July								
August								
September								
October								
November								
December								
Total	20,737	21,186	5,966	5,215	1,279	1,079	126	152
Change (t.)	449		-750		-200		27	
% Change	2.17%		-12.58%		-15.62%		21.39%	

**excludes calves*

Change in Throughput / Production

Last 4 weeks 2018/2019

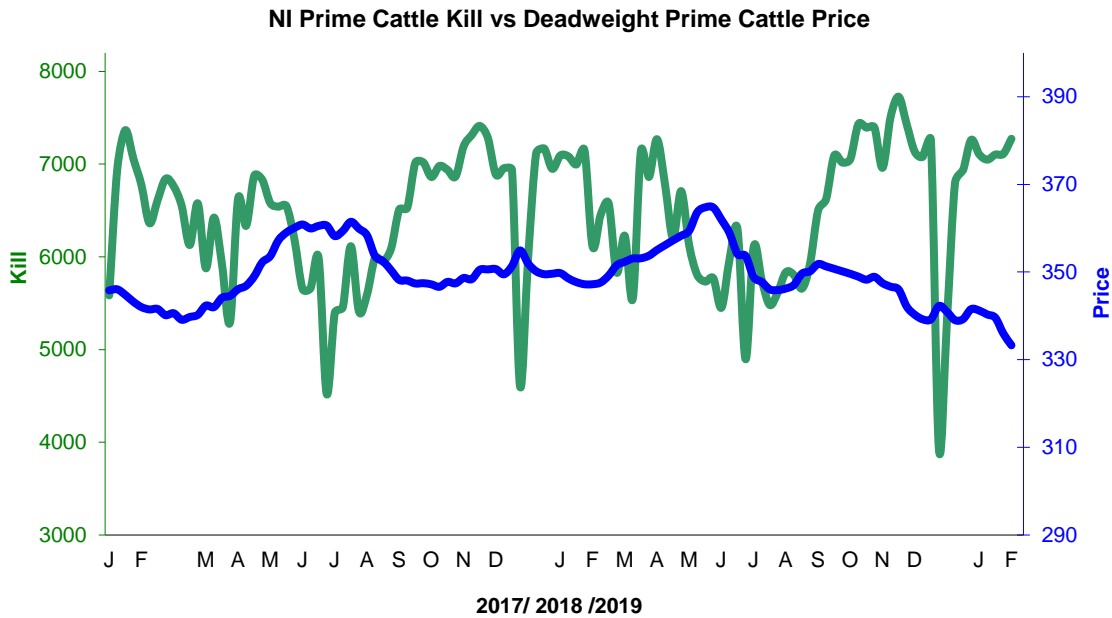
Change in Throughput / Production 2018/2019

February

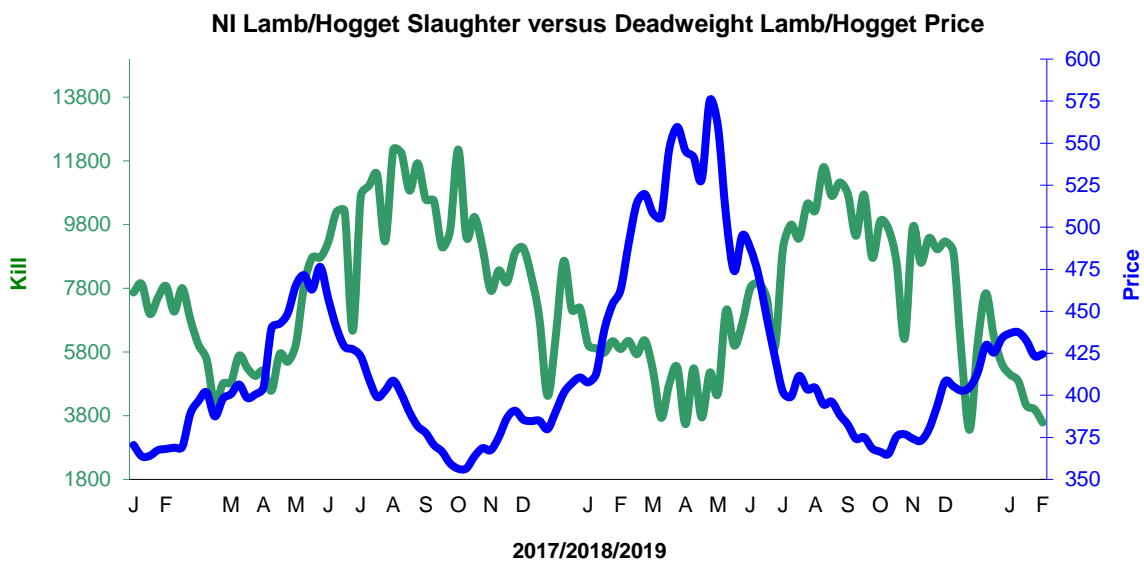
2018/2019	Number	Tonnage	ACW Kg
Prime	4.4%	6.7%	7.36
Cows	-16.2%	-13.3%	10.56
Total	-0.3%	2.6%	9.75
Lamb	-30.0%	-26.0%	1.27
Ewes and Rams	6.3%	23.0%	3.81
Total Sheep	-27.1%	-21.4%	1.73

Supply and Price

NI Clean Cattle Kill vs. Average Clean Cattle Price



NI Lamb/Hogget Kill vs. Average Lamb / Hogget Price

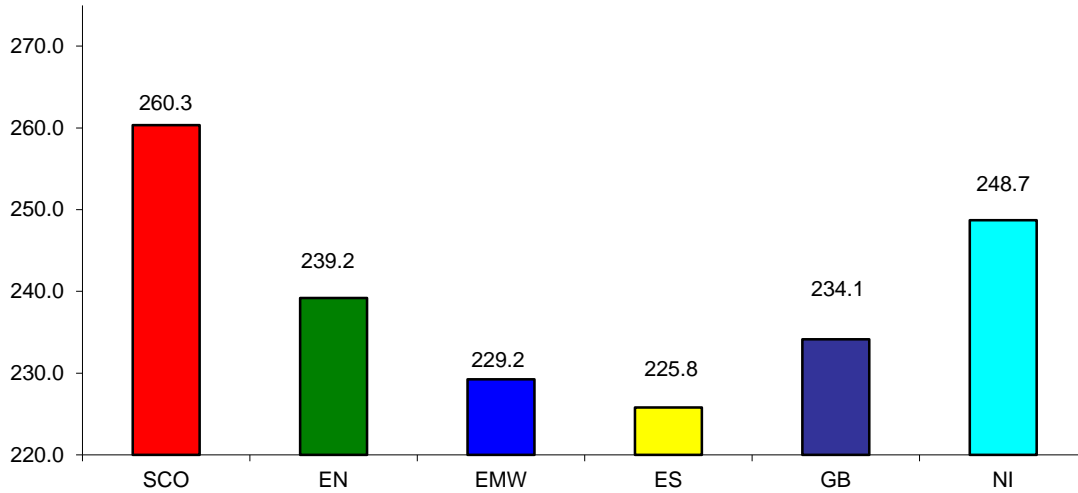


Green	Supply (Kill)
Blue	Price

BRITISH ISLES COMPARISONS

UK Average Cow Prices

52 Weeks to 02 March 2019

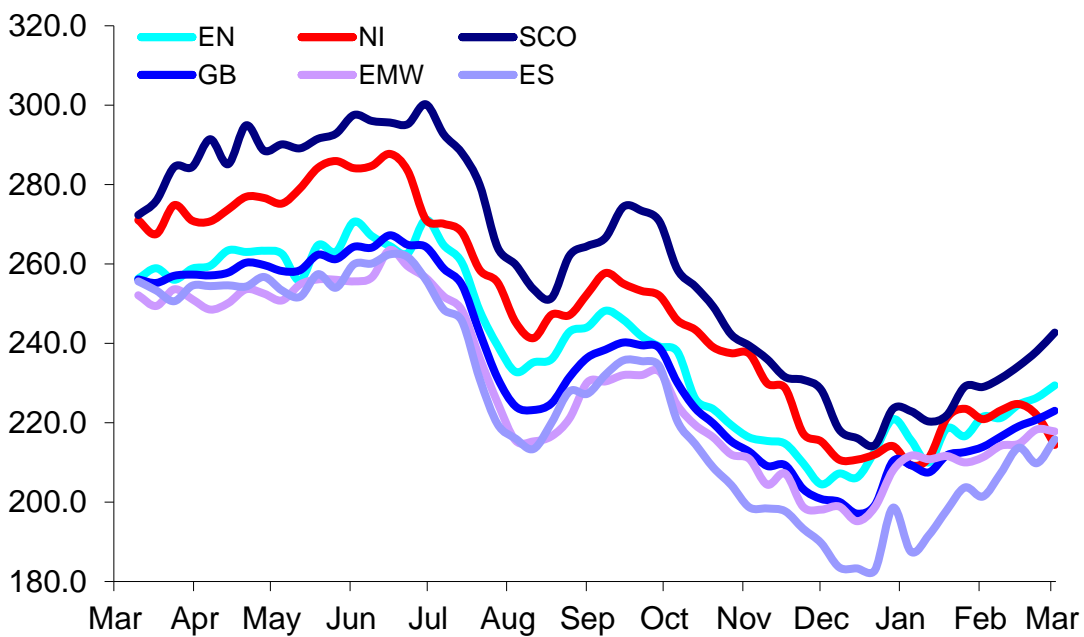


SCO	Scotland
EN	England North
EMW	England Midlands and Wales
ES	England South
NI	Northern Ireland
GB	Great Britain

Prices relate to UK Dressing Specification

Weekly UK Cow Prices

52 Weeks to 02 March 2019

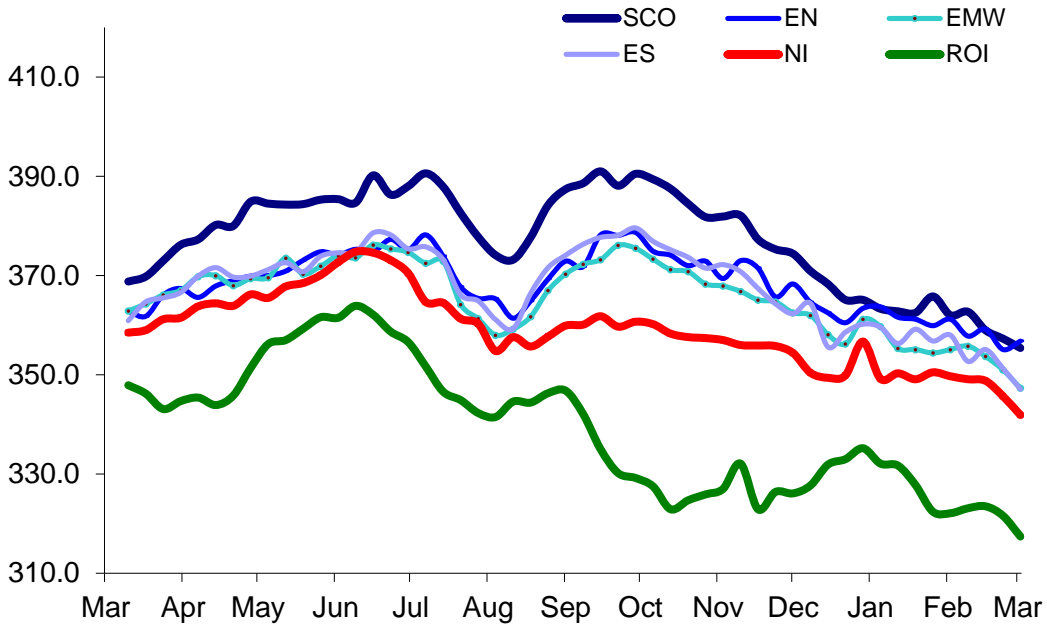


Market Information February 2019
Page 12

Prices relate to UK Dressing Specification

British Isles R3 Steer Price

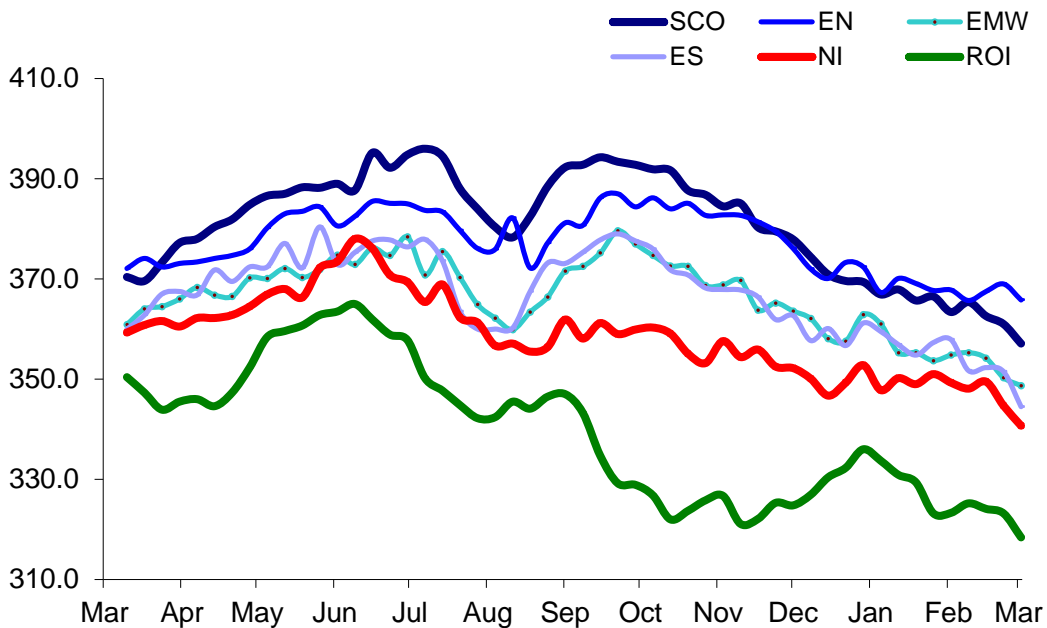
52 Weeks to 02 March 2019



Prices relate to UK Dressing Specification

British Isles R4 Steer Price

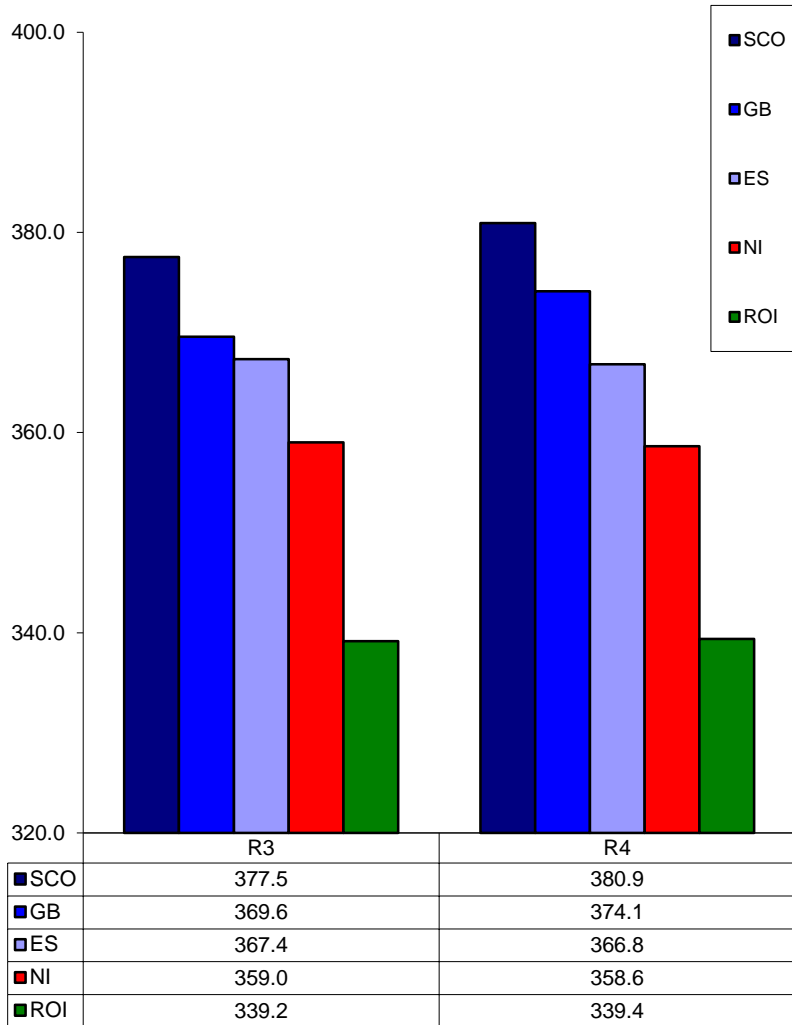
52 Weeks to 02 March 2019



Prices relate to UK Dressing Specification

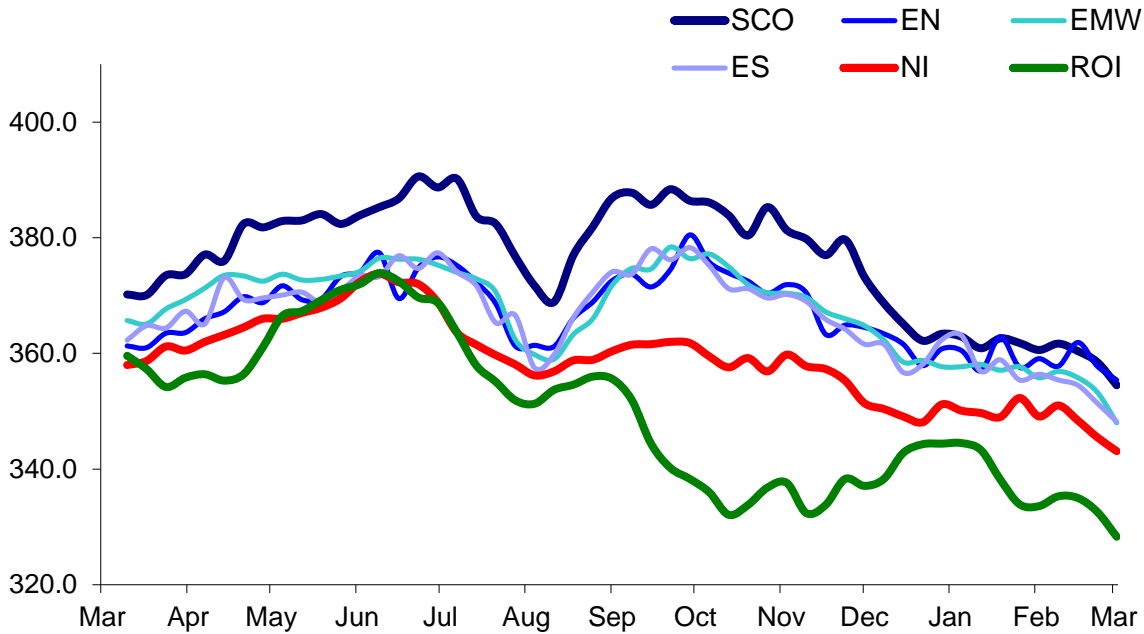
British Isles Average R3 and R4 Steer price

52 Weeks to 02 March 2019



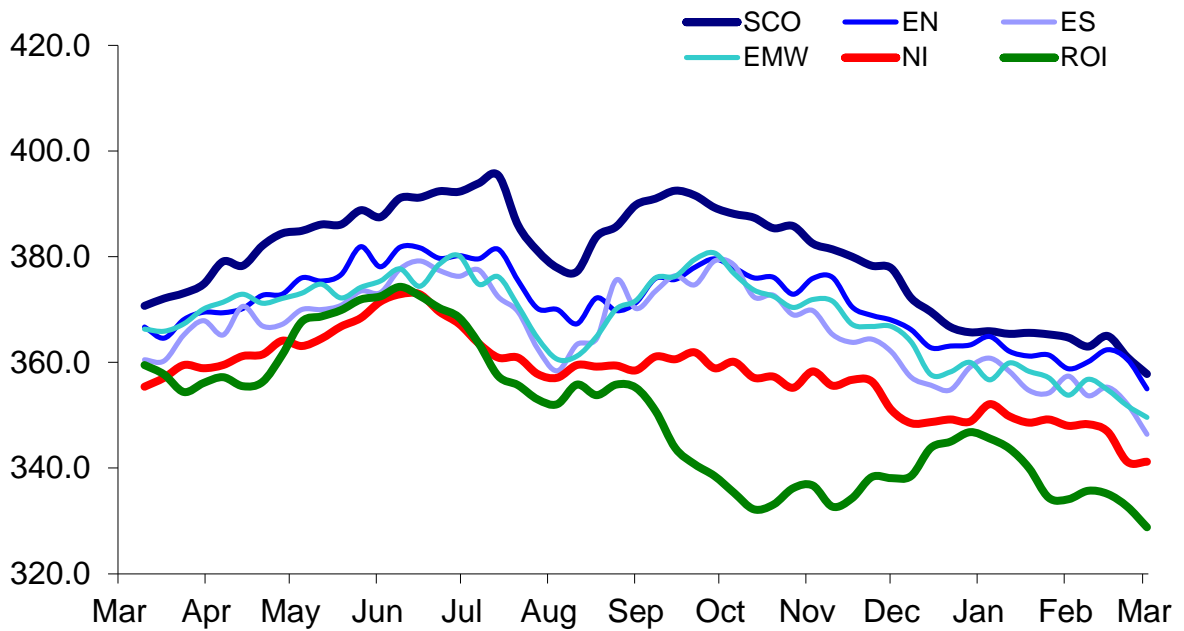
Prices relate to UK Dressing Specification

British Isles R3 Heifer Price
52 Weeks to 02 March 2019



Prices relate to UK Dressing Specification

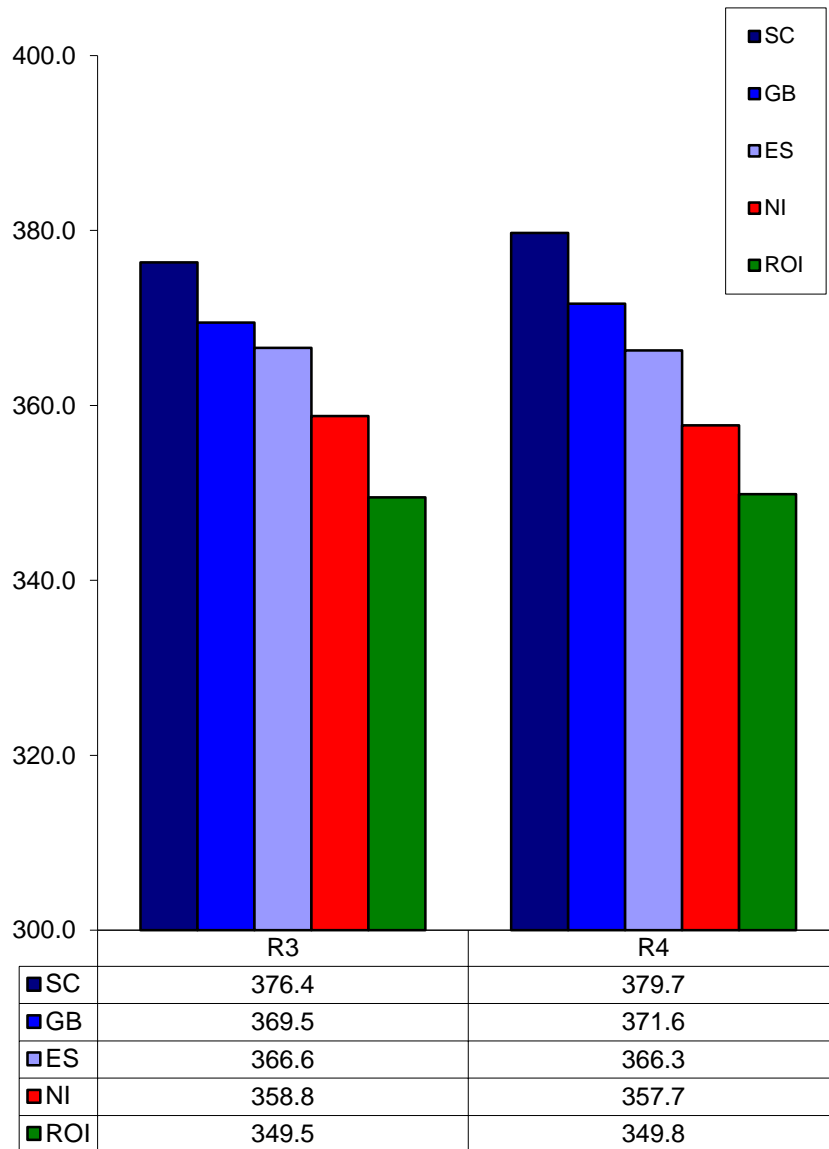
British Isles R4 Heifer Price
52 Weeks to 02 March 2019



Prices relate to UK Dressing Specification

British Isles Average R3 and R4 Heifer price

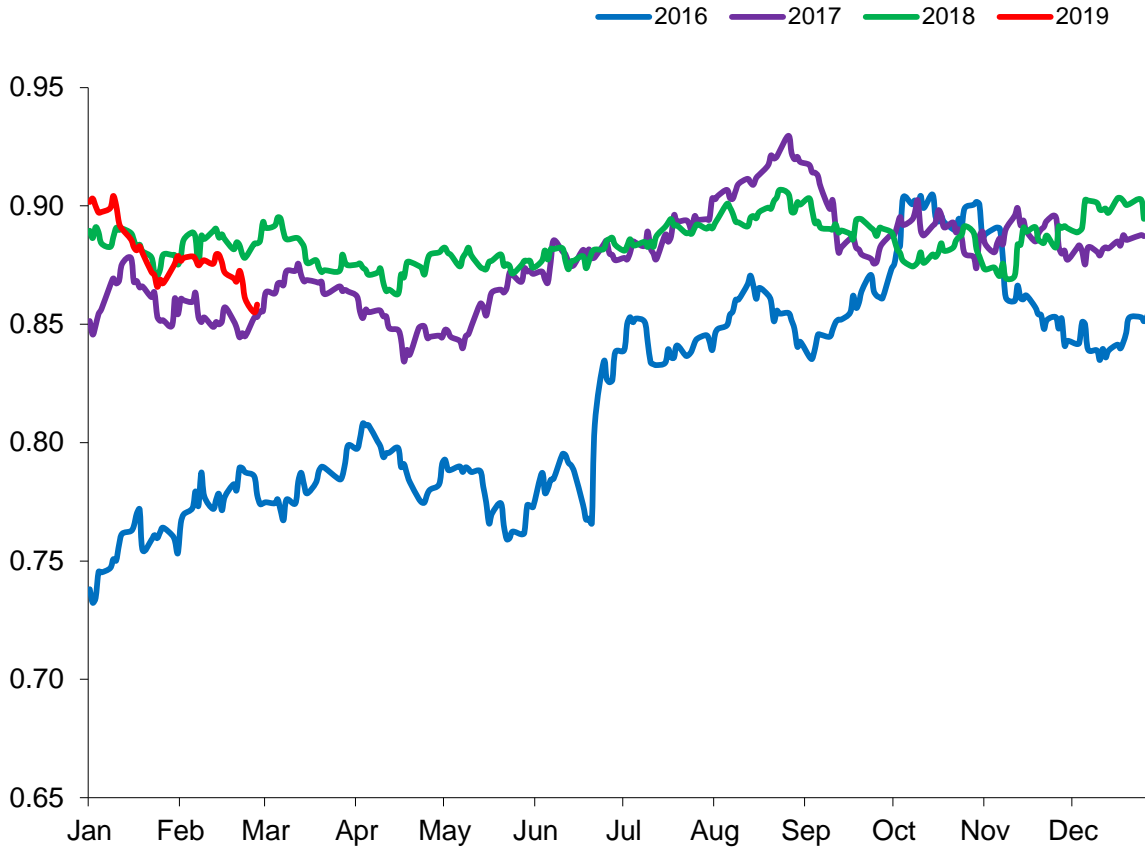
52 Weeks to 02 March 2019



Prices relate to UK Dressing Specification

Exchange Rate £ / Euro

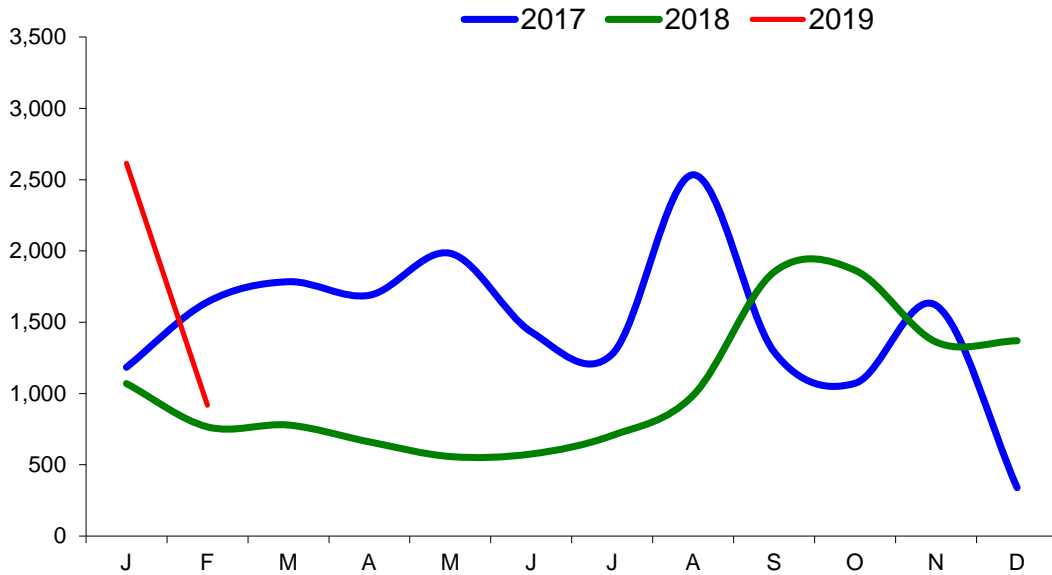
01 February 2016 – 28 February 2019



Imports

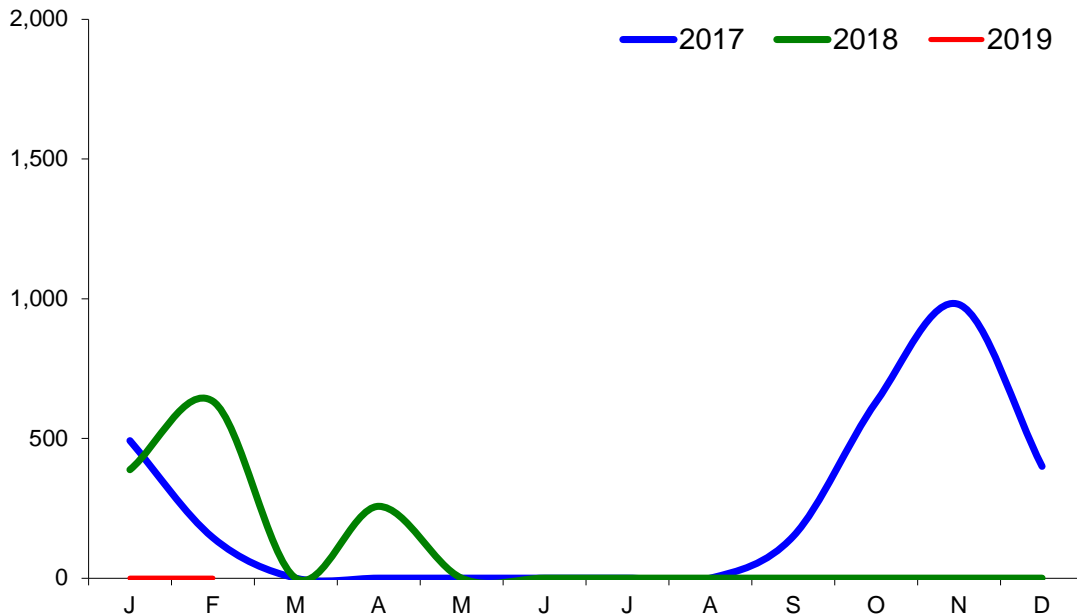
Monthly Live Imports of Cattle into NI for Direct Slaughter

From ROI and GB Combined



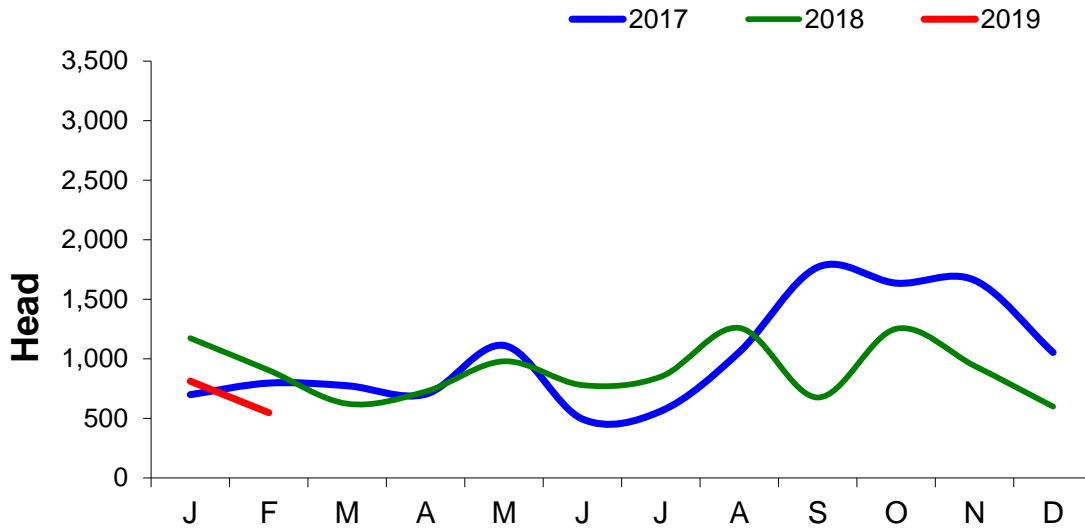
Monthly Live Imports of Sheep into NI for Direct Slaughter

From ROI and GB Combined



Exports

Monthly Live Exports of Cattle from NI into ROI and GB



Monthly Live Exports of Sheep from NI into ROI and GB

