



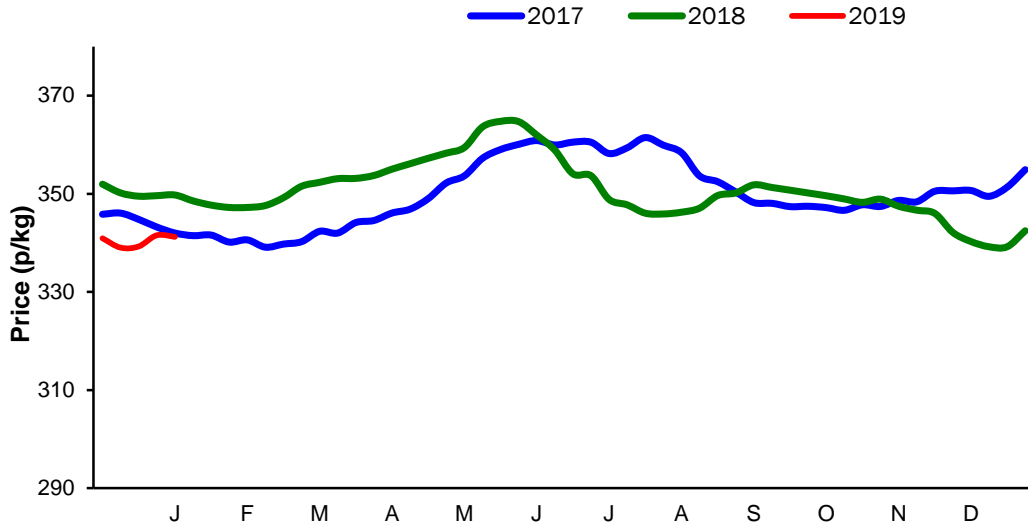
**Monthly Economic Review
January 2019**

Contents

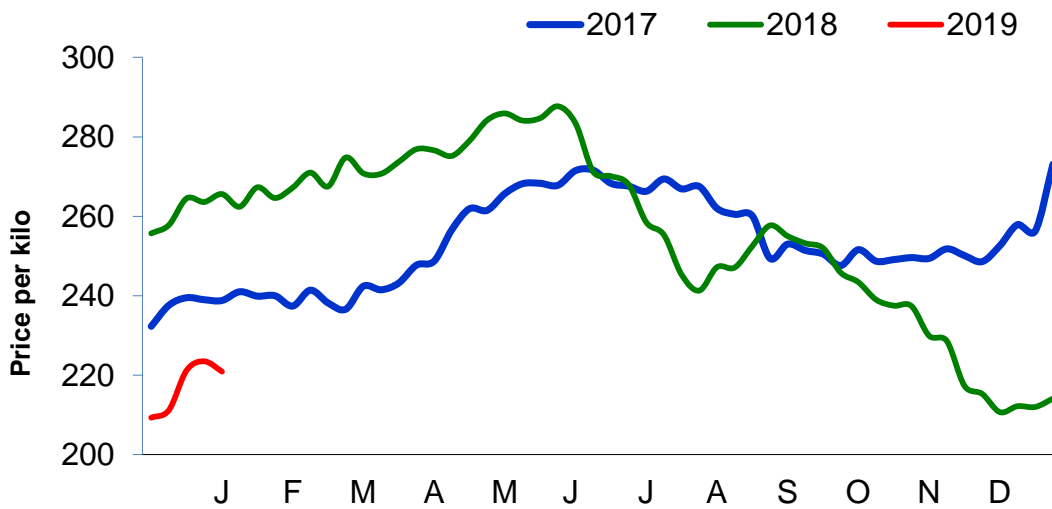
| | |
|---|----|
| Contents..... | 2 |
| Cattle Prices | 3 |
| Average NI Clean Cattle Price | 3 |
| Average NI Cow Price..... | 3 |
| Cattle Slaughtering..... | 4 |
| NI Clean Cattle Slaughtering – Cumulative | 4 |
| NI Weekly Clean Cattle Slaughtering..... | 4 |
| NI Weekly Cow Slaughtering | 5 |
| Sheep Prices..... | 6 |
| Average NI Lamb / Hogget Price | 6 |
| Sheep Slaughtering..... | 7 |
| Cumulative Lamb & Hogget Slaughtering | 7 |
| Total Weekly Lamb & Hogget Slaughtering | 7 |
| Total Weekly Ewe and Ram Slaughtering..... | 7 |
| Total Carcase Weight Produced for the Food Chain..... | 8 |
| Change in Throughput / Production | 9 |
| Supply and Price..... | 10 |
| NI Lamb/Hogget Kill vs. Average Lamb / Hogget Price | 10 |
| NI Clean Cattle Kill vs. Average Clean Cattle Price..... | 10 |
| British Isles Price Comparisons | 11 |
| UK Average Cow Prices | 11 |
| Weekly UK Cow Prices | 11 |
| British Isles R3 Steer Price | 12 |
| British Isles R4 Steer Price | 12 |
| British Isles Average R3 and R4 Steer price | 13 |
| British Isles R3 Heifer Price | 14 |
| British Isles R4 Heifer Price | 14 |
| British Isles Average R3 and R4 Heifer price..... | 15 |
| Exchange Rate £ / Euro | 16 |
| Imports..... | 17 |
| Monthly Live Imports of Cattle into NI for Direct Slaughter | 17 |
| Monthly Live Imports of Sheep into NI for Direct Slaughter | 17 |
| Exports | 18 |
| Monthly Live Exports of Cattle from NI into RoI and GB..... | 18 |
| Monthly live Exports of Sheep from NI into RoI and GB | 18 |

Cattle Prices

Average NI Clean Cattle Price

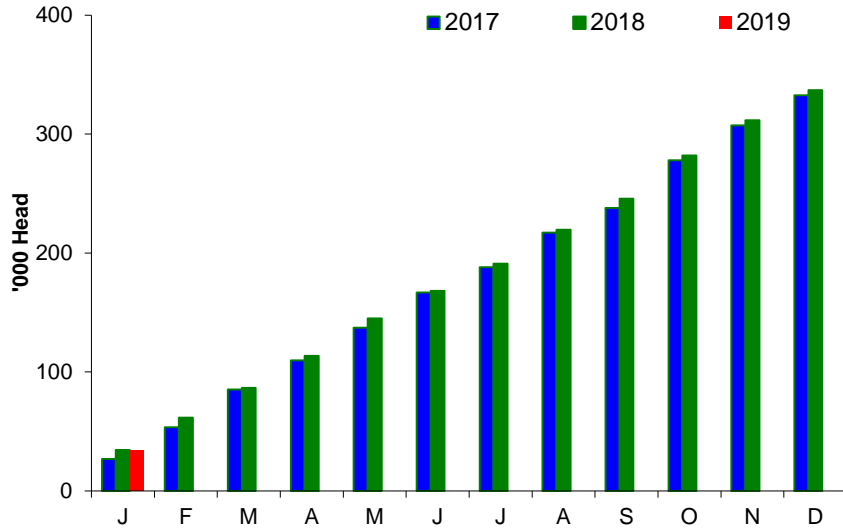


Average NI Cow Price

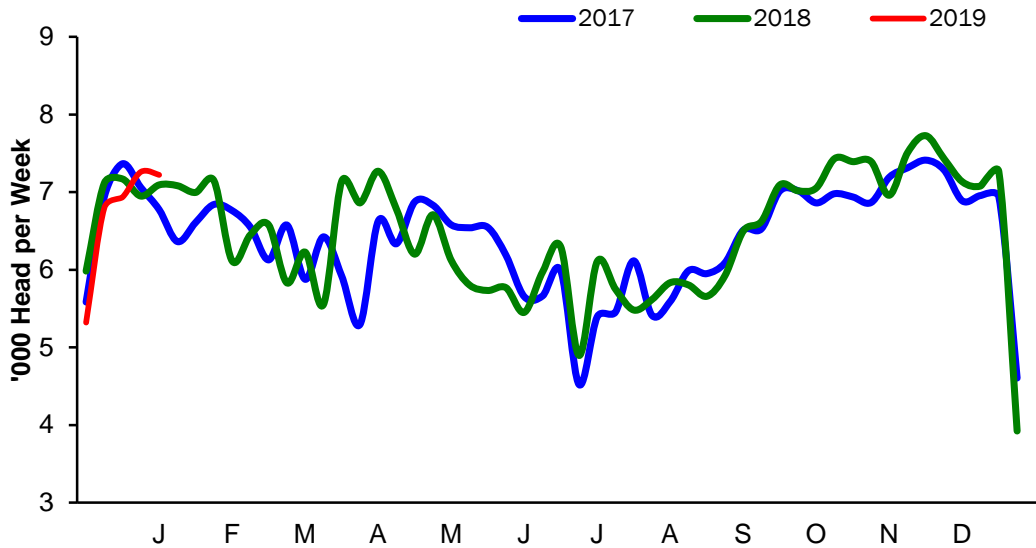


Cattle Slaughtering

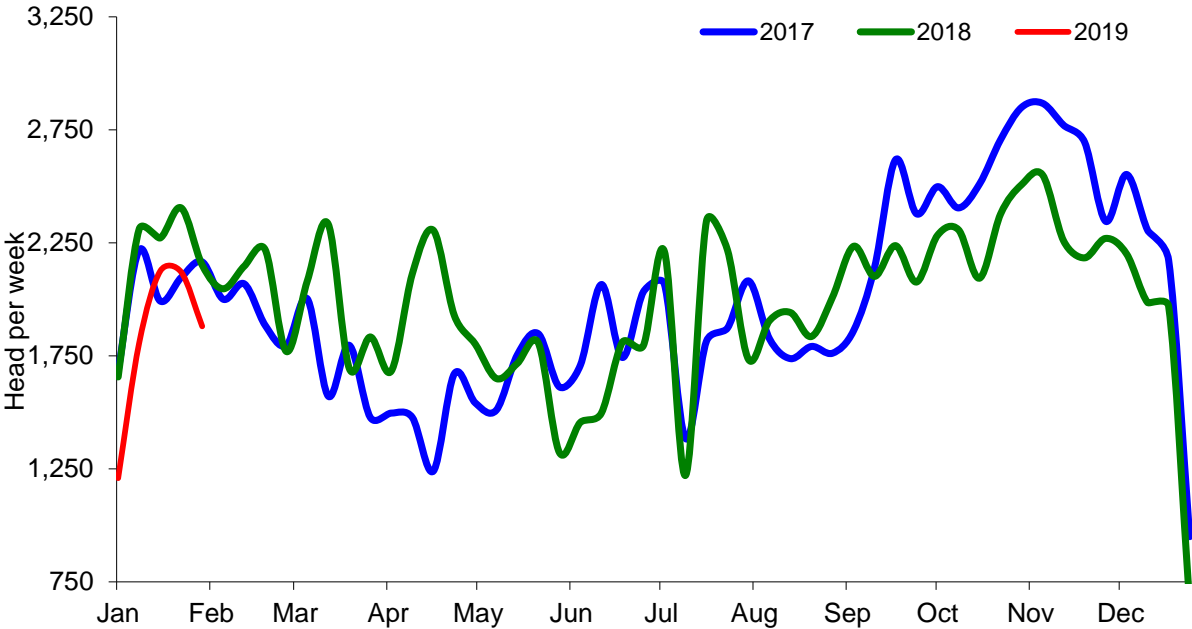
NI Clean Cattle Slaughtering – Cumulative



NI Weekly Clean Cattle Slaughtering

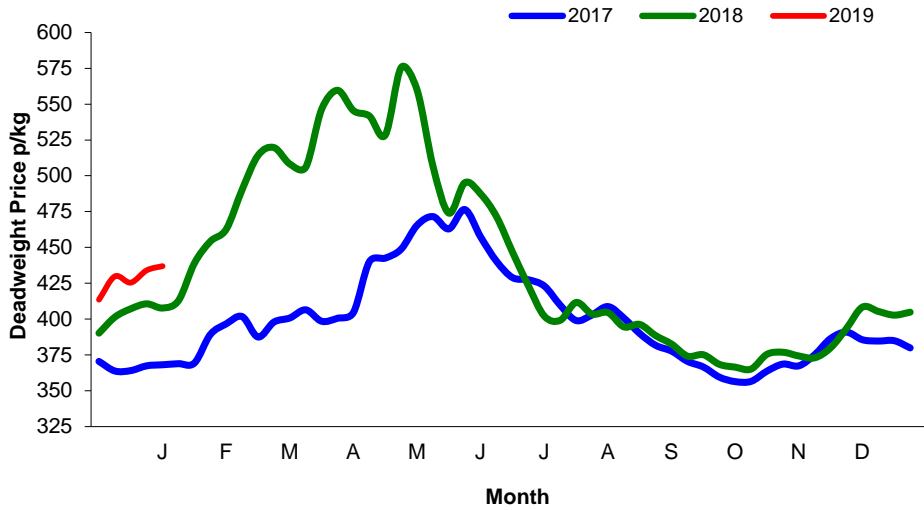


NI Weekly Cow Slaughtering



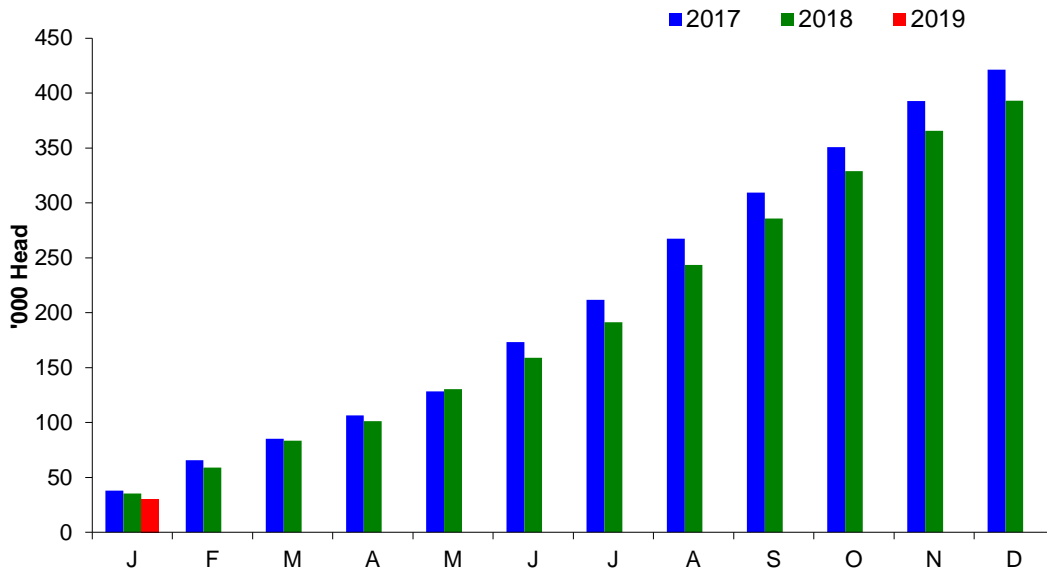
Sheep Prices

Average Deadweight NI Hogget / Lamb Price

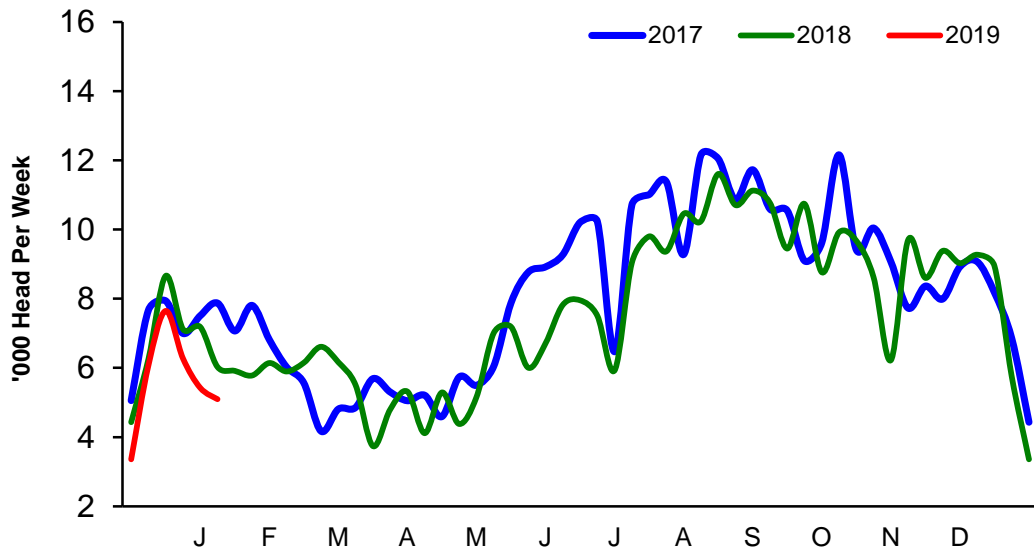


Sheep Slaughterings

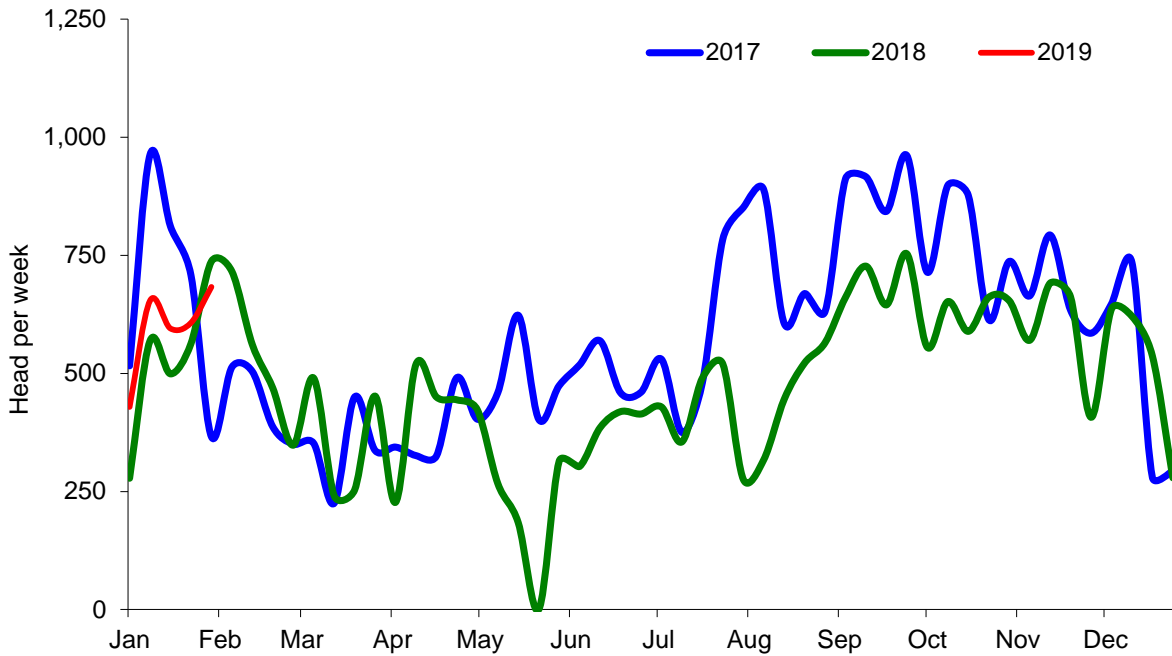
Cumulative Lamb & Hogget Slaughterings



Total Weekly Lamb & Hogget Slaughtering



Total Weekly Ewe and Ram Slaughtering



Market Information January 2019
Page 8

| NI CATTLE AND SHEEP SLAUGHTERINGS FOR THE FOODCHAIN | | | | | | |
|---|---------------------------------|---------------|-----------------|---------------------------------|---------------|---------------|
| | Jan | | | Year to Date | | |
| | (5 weeks ended 02/02/19) | | | (5 weeks ended 02/02/19) | | |
| | Jan-18 | Jan-19 | % Change | 2018 | 2019 | Change |
| CATTLE | | | | | | |
| Steers | 16,874 | 15,586 | -8% | 16,874 | 15,586 | -8% |
| Heifers | 14,279 | 14,033 | -2% | 14,279 | 14,033 | -2% |
| Young Bulls / Calves | 3,158 | 3,802 | +20% | 3,158 | 3,802 | +20% |
| Total Prime Cattle | 34,311 | 33,421 | -3% | 34,311 | 33,421 | -3% |
| Calves | 562 | 524 | -7% | 562 | 524 | -7% |
| Cows | 10,797 | 9,081 | -16% | 10,797 | 9,081 | -16% |
| Mature Bulls | 349 | 392 | +12% | 349 | 392 | +12% |
| Total Cattle | 46,019 | 43,418 | -6% | 46,019 | 43,418 | -6% |
| SHEEP | | | | | | |
| Lambs & Hoggets | 35,246 | 30,512 | -13% | 35,246 | 30,512 | -13% |
| Ewes & Rams | 2,646 | 2,968 | +12% | 2,646 | 2,968 | +12% |
| Total Sheep | 37,892 | 33,480 | -12% | 37,892 | 33,480 | -12% |
| The above figures are provisional; any amendments will be incorporated in the cumulative data (source DAERA). | | | | | | |

| NI BEEF AND SHEEPMEAT PRODUCTION - FOODCHAIN | | | | | | |
|---|---------------------------------|---------------|-----------------|---------------------------------|---------------|---------------|
| | January | | | Year to Date | | |
| | (5 weeks ended 02/02/19) | | | (5 weeks ended 02/02/19) | | |
| | Jan-18 | Jan-19 | % Change | 2018 | 2019 | Change |
| BEEF | | | | | | |
| Steers | 5,977 | 5,589 | -6% | 5,977 | 5,589 | -6% |
| Heifers | 4,538 | 4,504 | -1% | 4,538 | 4,504 | -1% |
| Young Bulls | 1,029 | 1,285 | +25% | 1,029 | 1,285 | +25% |
| Total Prime Beef | 11,543 | 11,378 | -1% | 11,543 | 11,378 | -1% |
| Calves | 103 | 105 | +2% | 103 | 105 | +2% |
| Cows | 3,250 | 2,798 | -14% | 3,250 | 2,798 | -14% |
| Mature Bulls | 156 | 168 | +8% | 156 | 168 | +8% |
| Total Beef | 15,052 | 14,450 | -4% | 15,052 | 14,450 | -4% |
| SHEEPMEAT | | | | | | |
| Lambs & Hoggets | 764 | 698 | -9% | 764 | 698 | -9% |
| Ewes & Rams | 73 | 87 | +20% | 73 | 87 | +20% |
| Total Sheepmeat | 837 | 786 | -6% | 837 | 786 | -6% |
| The above figures are provisional; any amendments will be incorporated in the cumulative data (source DAERA). | | | | | | |

Market Information January 2019
Page 9

Total Carcase Weight Produced for the Food Chain
Year-to-Date (tonnes – t.)

| Month | Prime Cattle | | Cows & Bulls | | Lambs/Hoggets | | Ewes & Rams | |
|--------------------|---------------|---------------|----------------|--------------|---------------|------------|---------------|-----------|
| | 2018 | 2019 | 2018 | 2019 | 2018 | 2019 | 2018 | 2019 |
| January | 11,543 | 11,378 | 3,406 | 2,966 | 764 | 698 | 73 | 87 |
| February | | | | | | | | |
| March | | | | | | | | |
| April | | | | | | | | |
| May | | | | | | | | |
| June | | | | | | | | |
| July | | | | | | | | |
| August | | | | | | | | |
| September | | | | | | | | |
| October | | | | | | | | |
| November | | | | | | | | |
| December | | | | | | | | |
| Total | 11,543 | 11,378 | 3,406 | 2,966 | 764 | 698 | 73 | 87 |
| Change (t.) | -165 | | -439 | | -66 | | 15 | |
| % Change | -1.43% | | -12.90% | | -8.61% | | 20.48% | |

**excludes calves*

Change in Throughput / Production

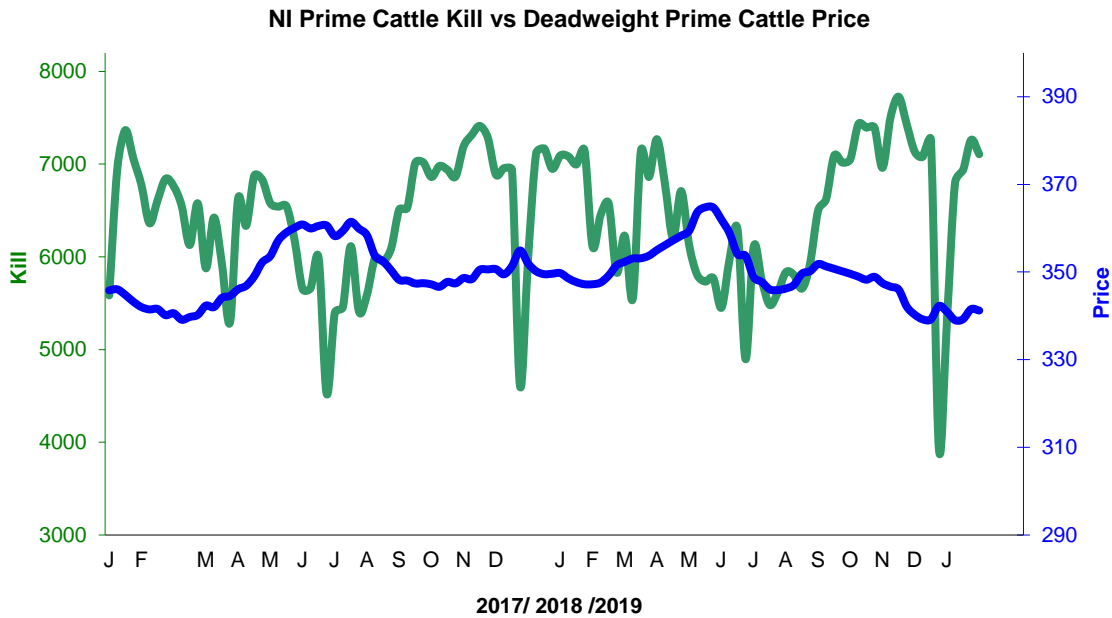
Last 5 weeks 2018/2019

Change in Throughput / Production 2018/2019

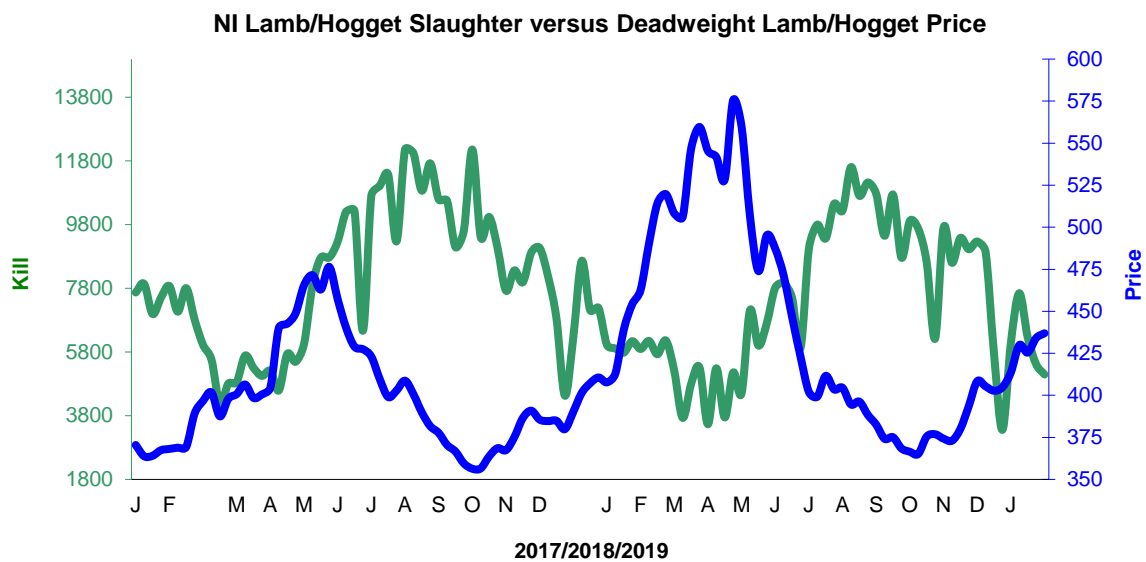
| January | | | |
|--------------------|---------------|--------------|-------------|
| 2018/2019 | Number | Tonnage | ACW Kg |
| Prime | -2.6% | -1.4% | 3.95 |
| Cows | -15.9% | -13.9% | 6.33 |
| Total | -5.7% | -4.0% | 6.06 |
| Lamb | -13.4% | -8.6% | 1.22 |
| Ewes and Rams | 12.2% | 20.5% | 1.90 |
| Total Sheep | -11.6% | -6.1% | 1.41 |

Supply and Price

NI Clean Cattle Kill vs. Average Clean Cattle Price



NI Lamb/Hogget Kill vs. Average Lamb / Hogget Price

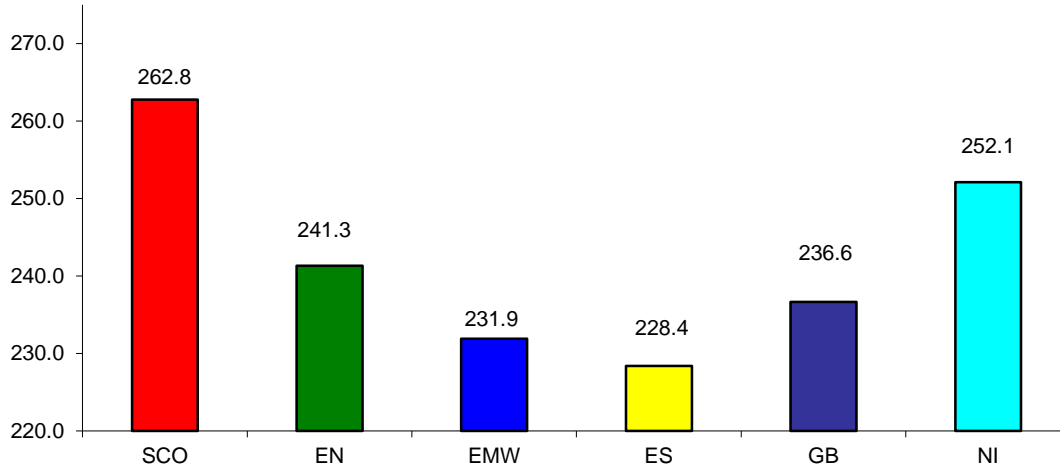


| | |
|-------|---------------|
| Green | Supply (Kill) |
| Blue | Price |

BRITISH ISLES COMPARISONS

UK Average Cow Prices

52 Weeks to 02 February 2019

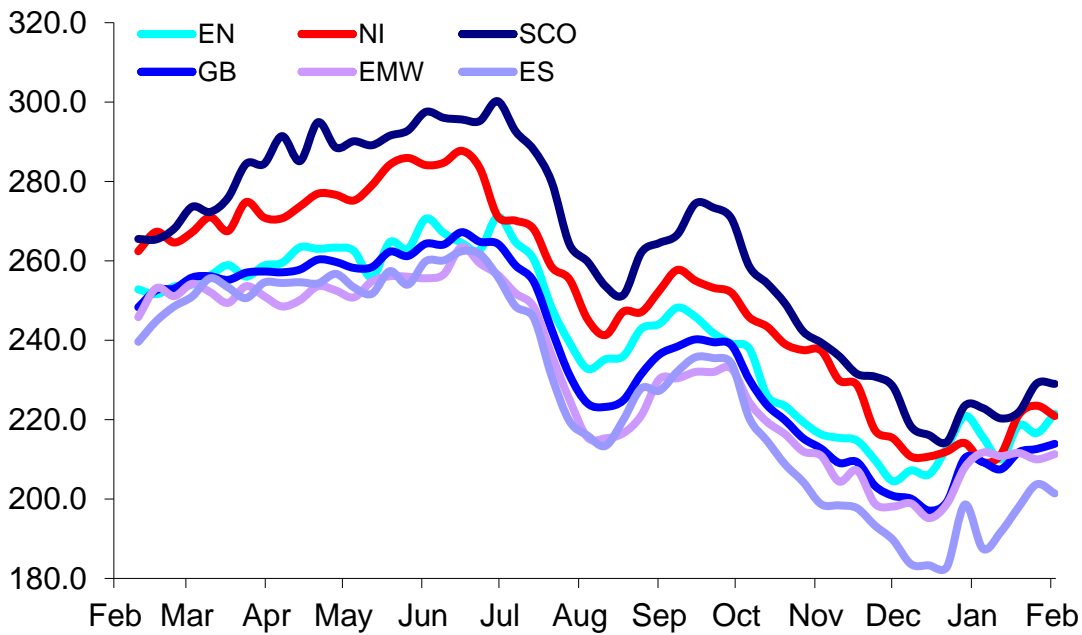


| | |
|-----|----------------------------|
| SCO | Scotland |
| EN | England North |
| EMW | England Midlands and Wales |
| ES | England South |
| NI | Northern Ireland |
| GB | Great Britain |

Prices relate to UK Dressing Specification

Weekly UK Cow Prices

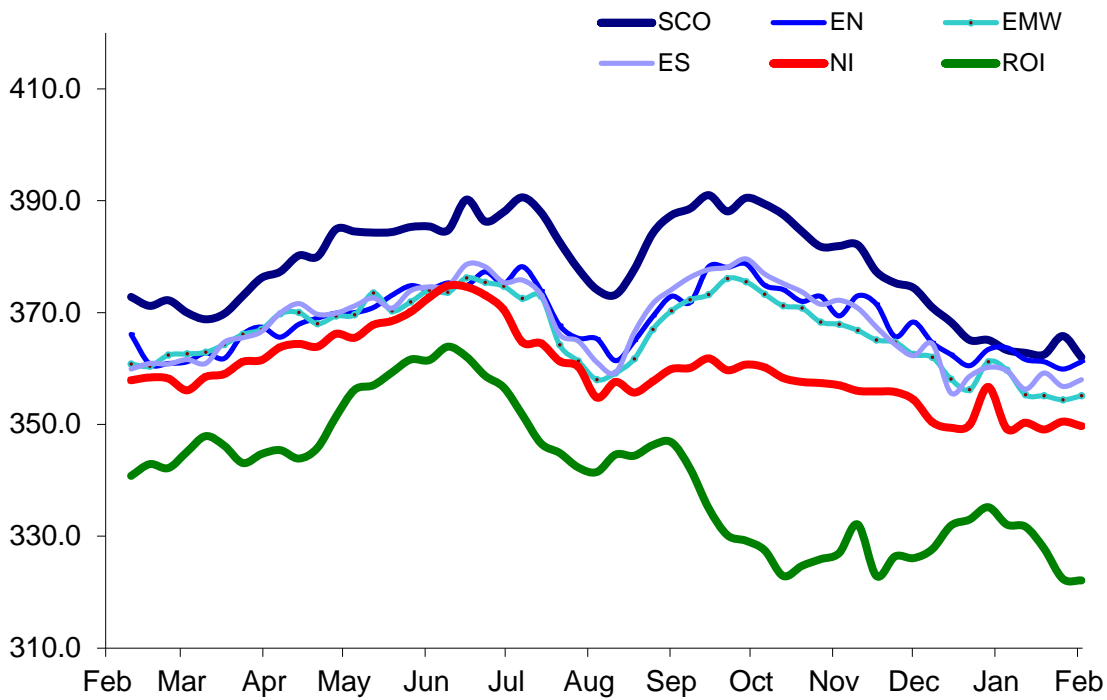
52 Weeks to 02 February 2019



Prices relate to UK Dressing Specification

British Isles R3 Steer Price

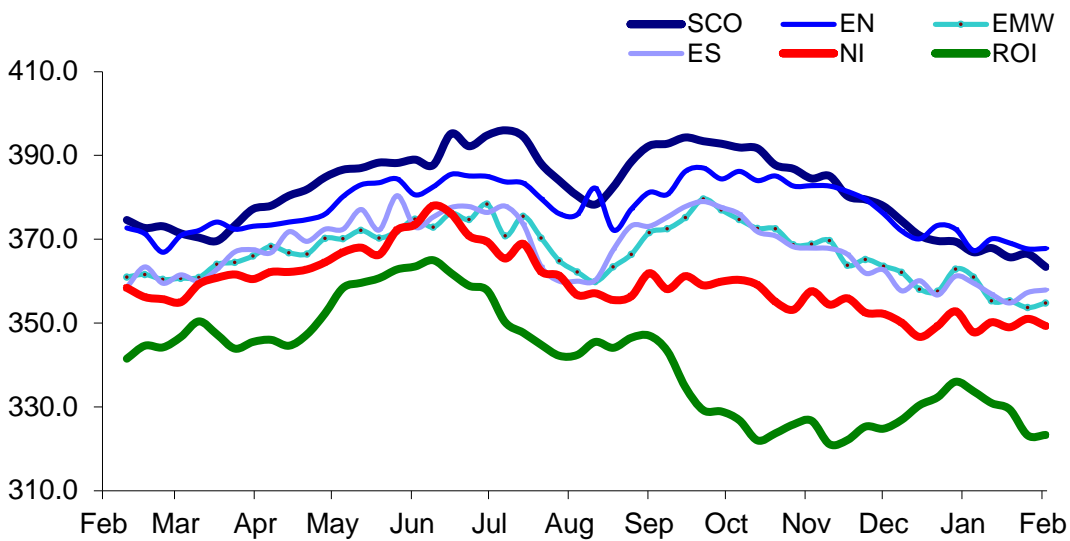
52 Weeks to 02 February 2019



Prices relate to UK Dressing Specification

British Isles R4 Steer Price

52 Weeks to 02 February 2019

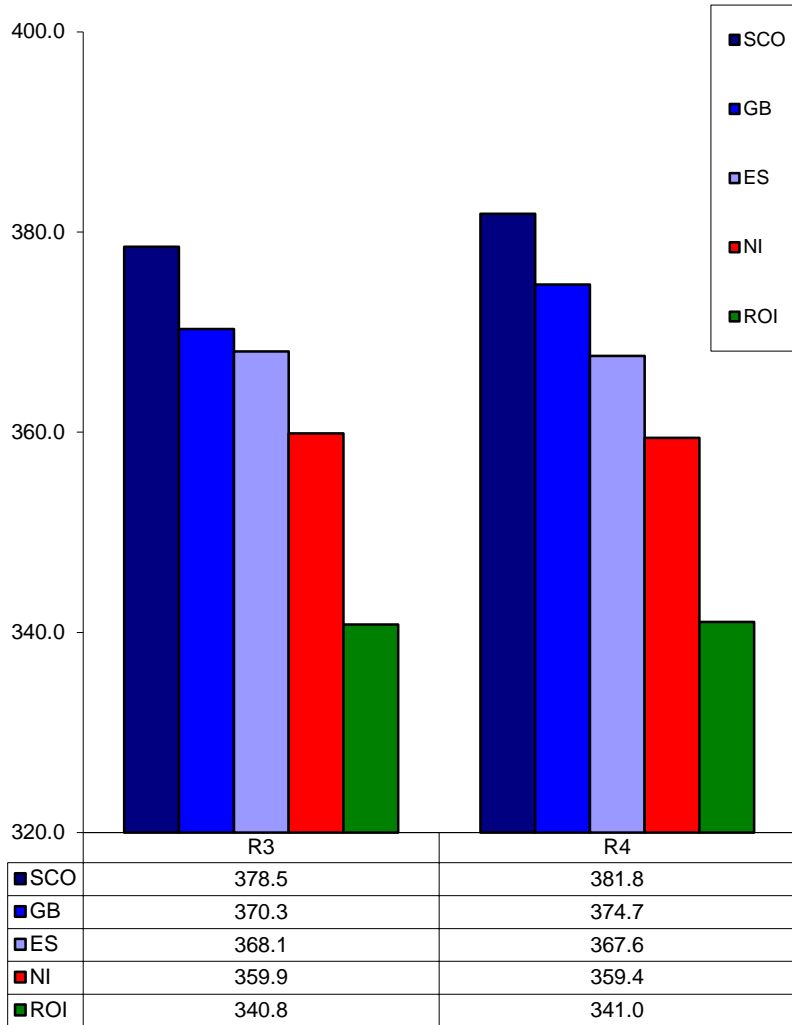


Prices relate to UK Dressing Specification

Market Information January 2019
Page 13

British Isles Average R3 and R4 Steer price

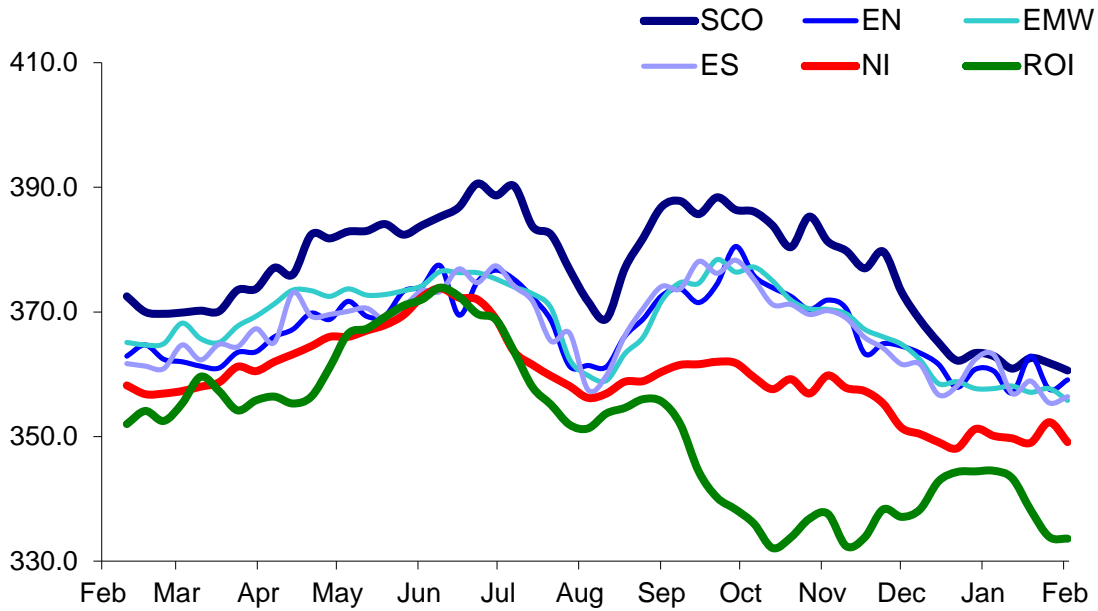
52 Weeks to 02 February 2019



Prices relate to UK Dressing Specification

British Isles R3 Heifer Price

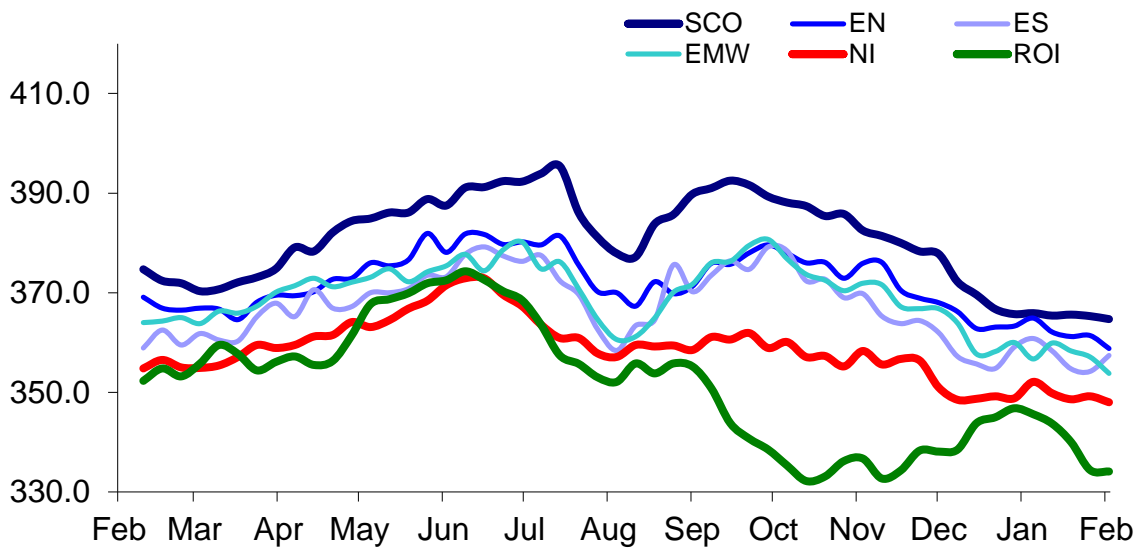
52 Weeks to 02 February 2019



Prices relate to UK Dressing Specification

British Isles R4 Heifer Price

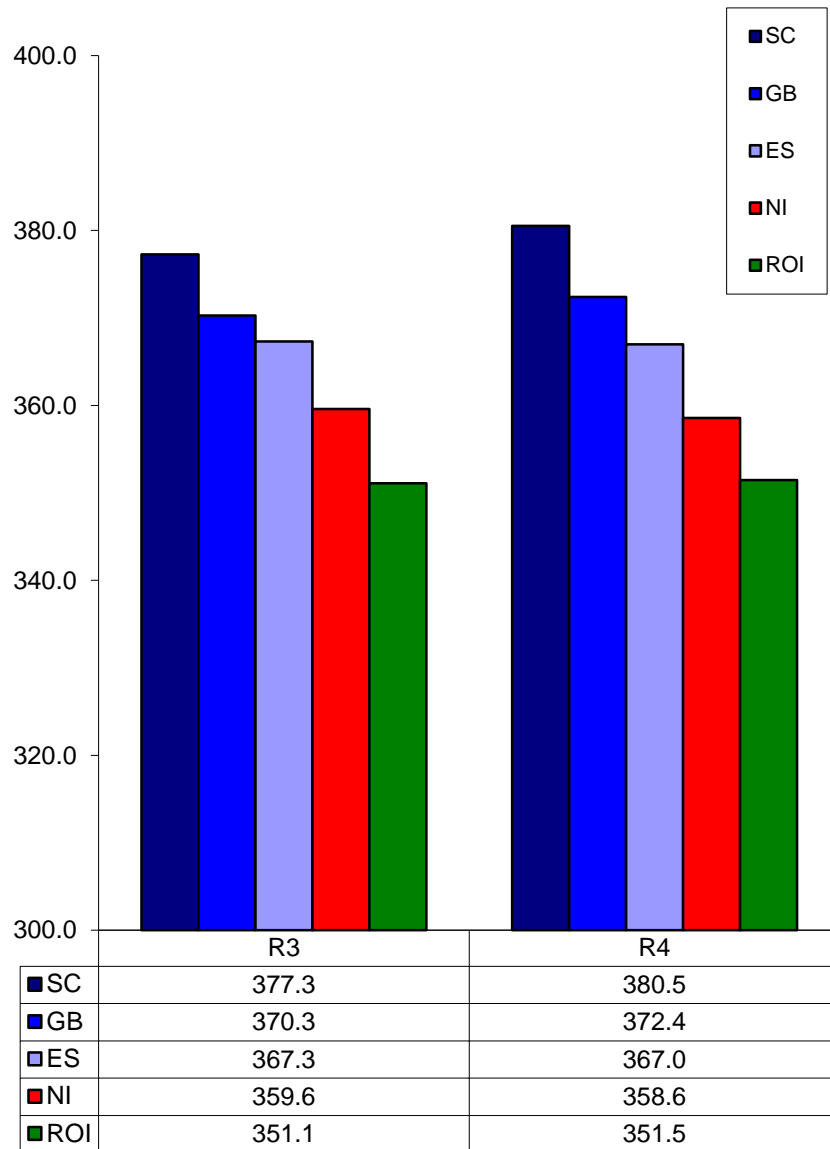
52 Weeks to 02 February 2019



Prices relate to UK Dressing Specification

British Isles Average R3 and R4 Heifer price

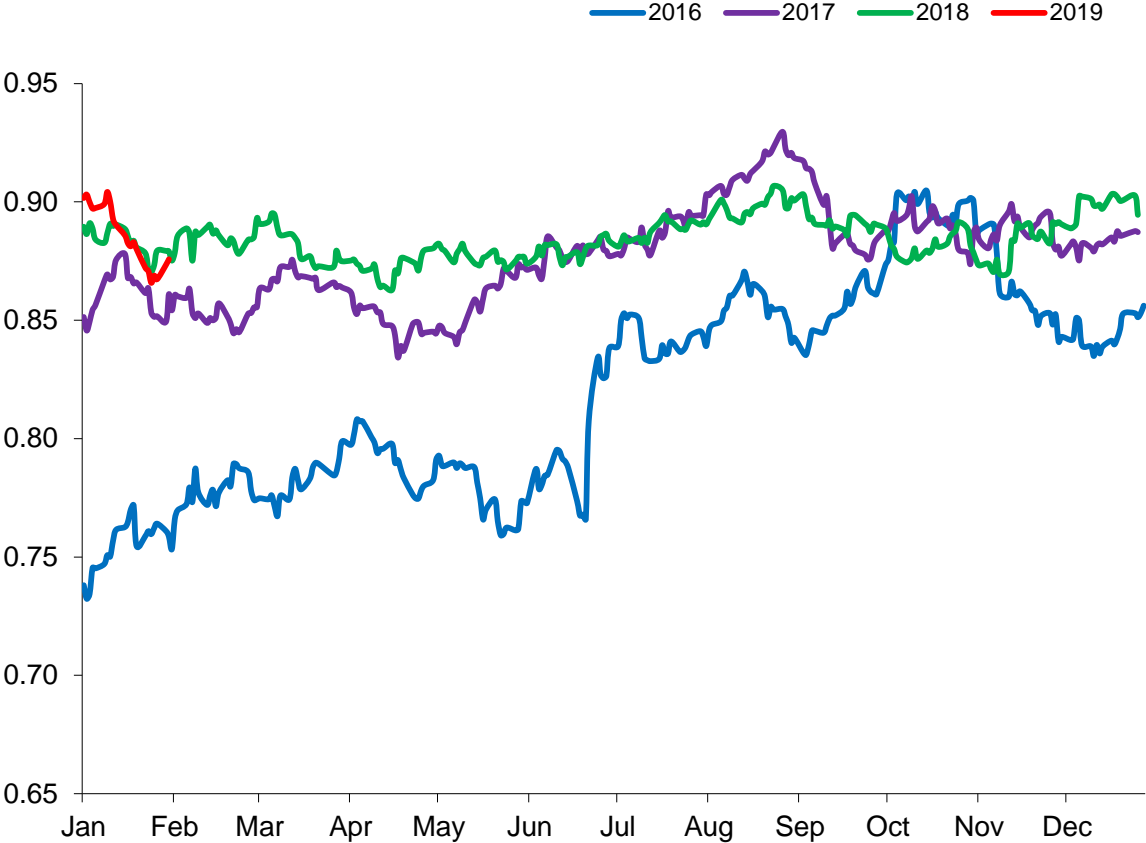
52 Weeks to 02 February 2019



Prices relate to UK Dressing Specification

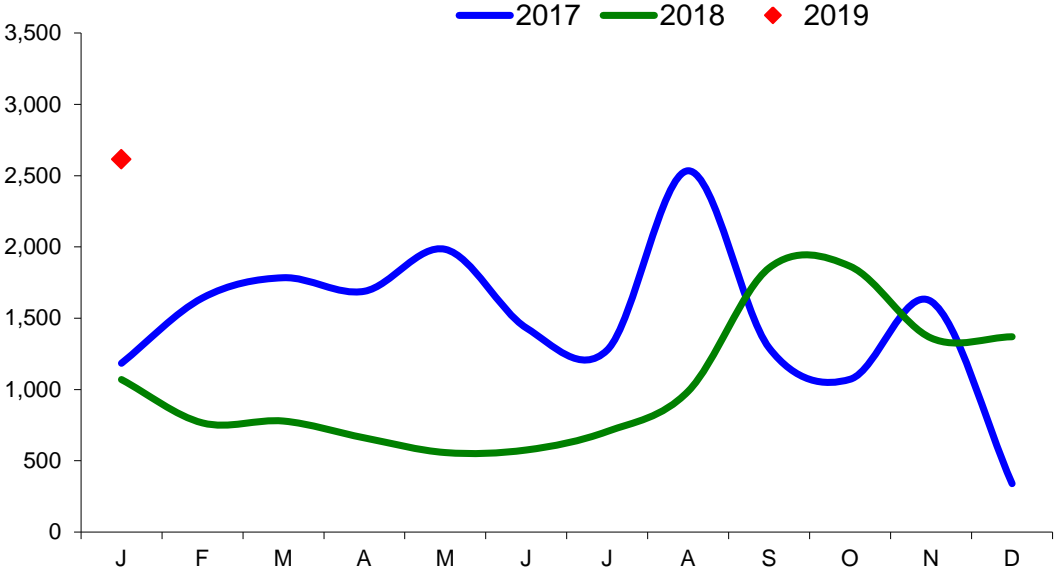
Exchange Rate £ / Euro

01 January 2016 –31 January 2019

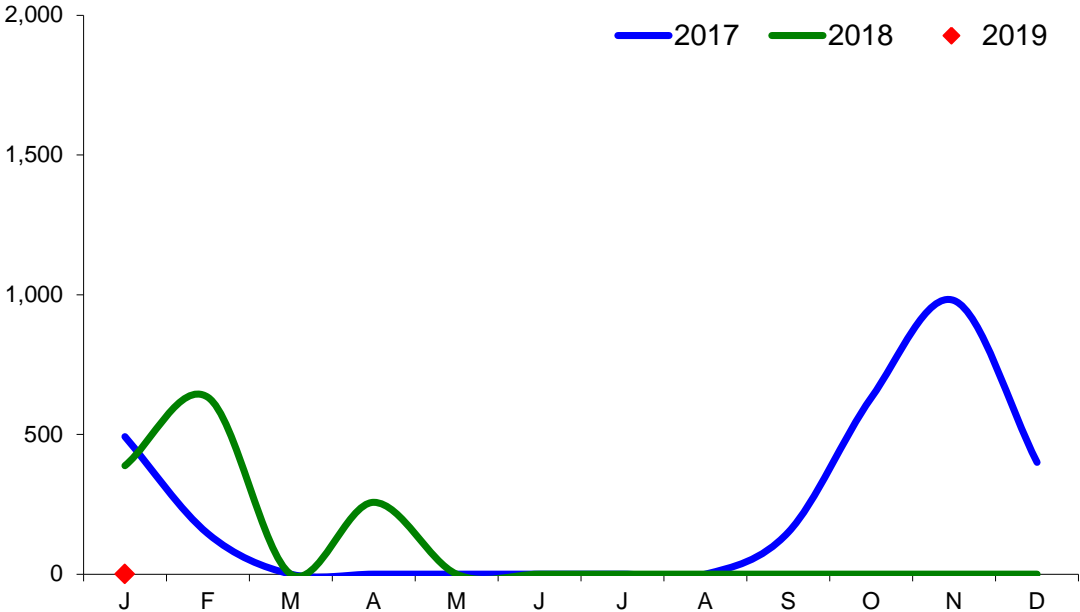


Imports

Monthly Live Imports of Cattle into NI for Direct Slaughter
From ROI and GB Combined

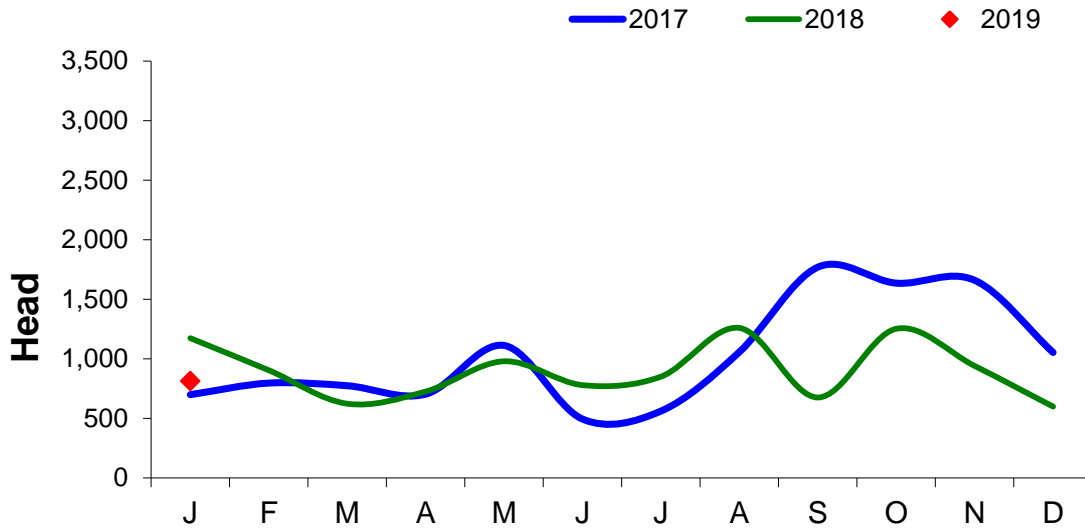


Monthly Live Imports of Sheep into NI for Direct Slaughter
From ROI and GB Combined



Exports

Monthly Live Exports of Cattle from NI into ROI and GB



Monthly Live Exports of Sheep from NI into ROI and GB

