



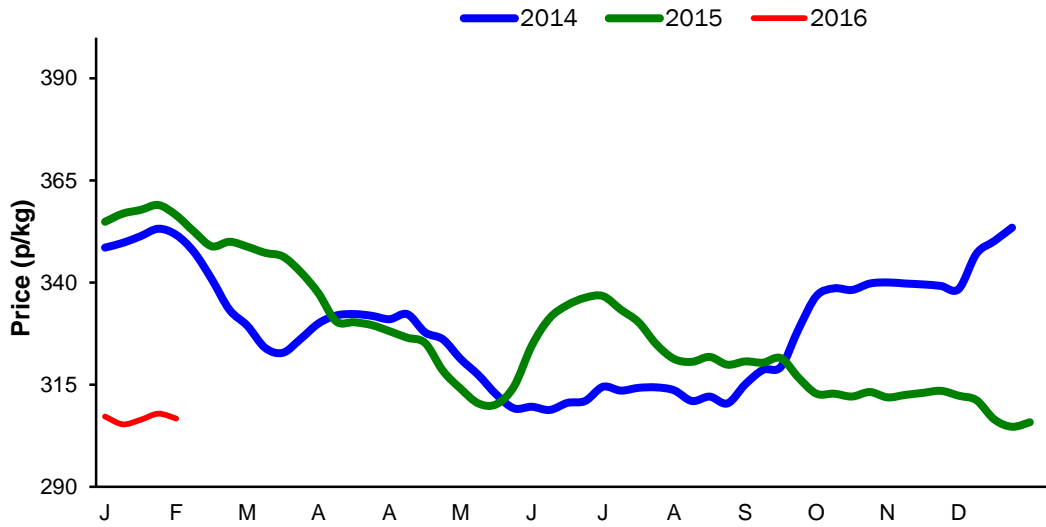
**Monthly Economic Review
January 2016**

Contents

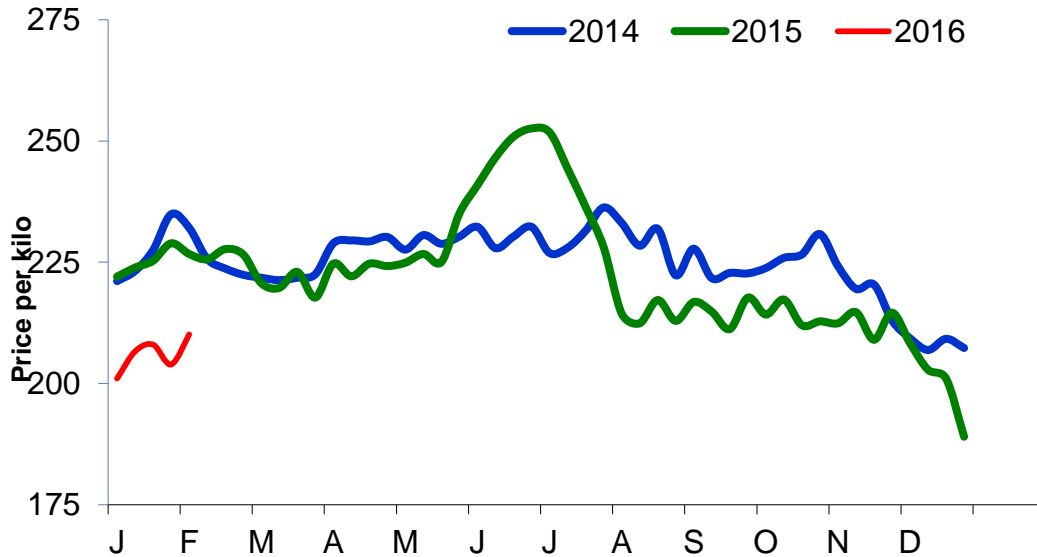
Contents	3
Cattle Prices.....	4
Average NI Clean Cattle Price.....	4
Average NI Cow Price	4
Cattle Slaughtering.....	5
NI Clean Cattle Slaughtering – Cumulative	5
NI Weekly Clean Cattle Slaughtering	5
NI Weekly Cow Slaughtering.....	5
Sheep Prices.....	6
Average NI Lamb / Hogget Price.....	6
Sheep Slaughtering.....	7
Cumulative Lamb & Hogget Slaughtering.....	7
Total Weekly Lamb & Hogget Slaughtering.....	7
Total Weekly Ewe and Ram Slaughtering	7
Total Carcase Weight Produced for the Food Chain.....	8
Change in Throughput / Production	9
Supply and Price.....	10
NI Lamb/Hogget Kill vs. Average Lamb / Hogget Price	10
NI Clean Cattle Kill vs. Average Clean Cattle Price.....	10
British Isles Price Comparisons	11
UK Average Cow Prices	11
Weekly UK Cow Prices	11
British Isles R3 Steer Price	12
British Isles R4 Steer Price	12
British Isles Average R3 and R4 Steer price	13
British Isles R3 Heifer Price	14
British Isles R4 Heifer Price	14
British Isles Average R3 and R4 Heifer price	15
Exchange Rate £ / Euro.....	17
Imports.....	18
Monthly Live Imports of Cattle into NI for Direct Slaughter.....	18
Monthly Live Imports of Sheep into NI for Direct Slaughter.....	18
Exports.....	19
Monthly Live Exports of Cattle from NI into Rol and GB.....	19
Monthly live Exports of Sheep from NI into Rol and GB.....	19

Cattle Prices

Average NI Clean Cattle Price

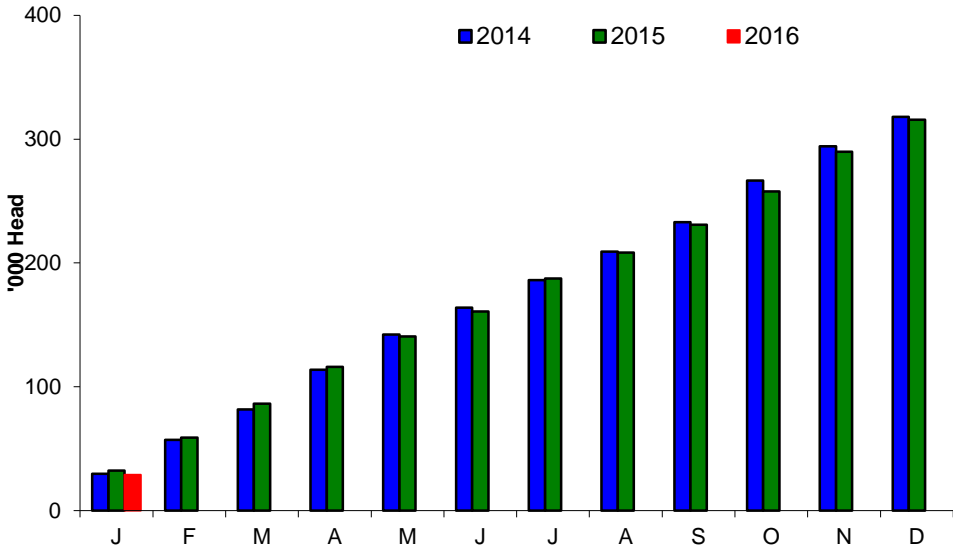


Average NI Cow Price

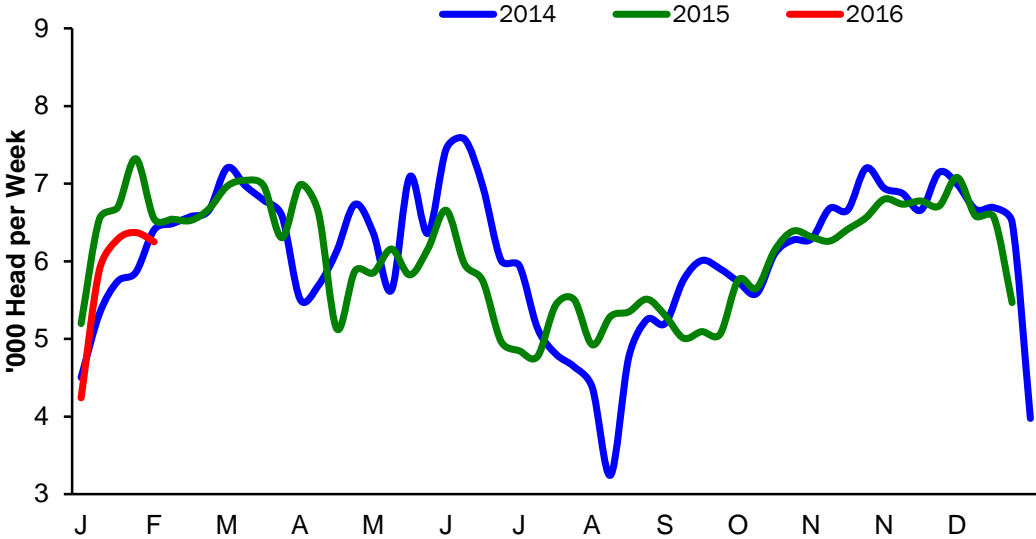


Cattle Slaughtering

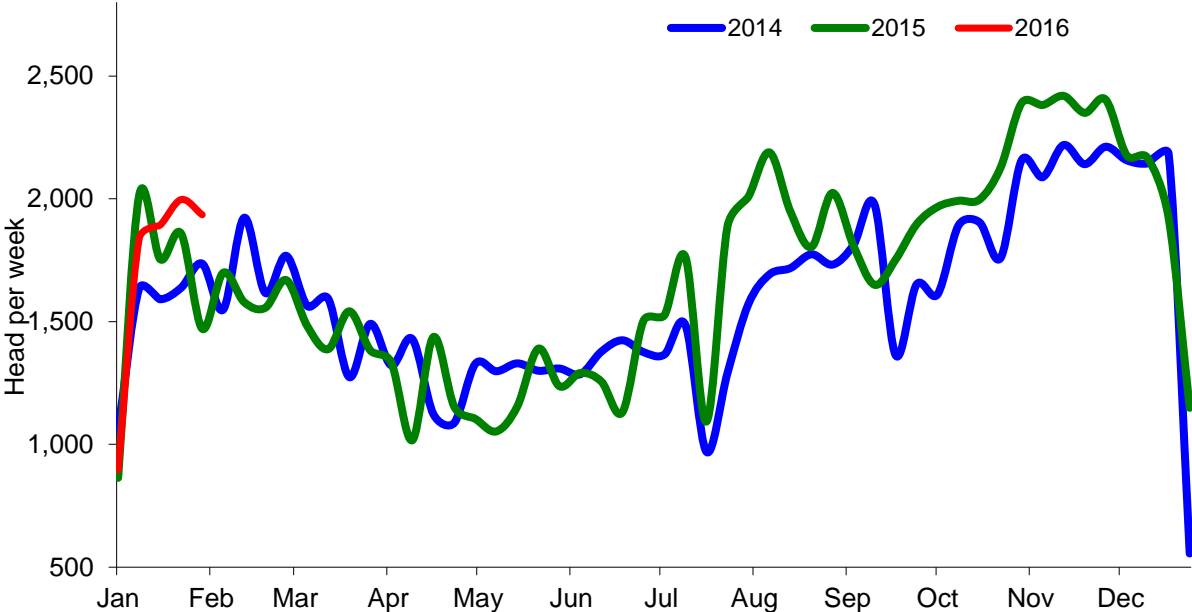
NI Clean Cattle Slaughtering – Cumulative



NI Weekly Clean Cattle Slaughtering

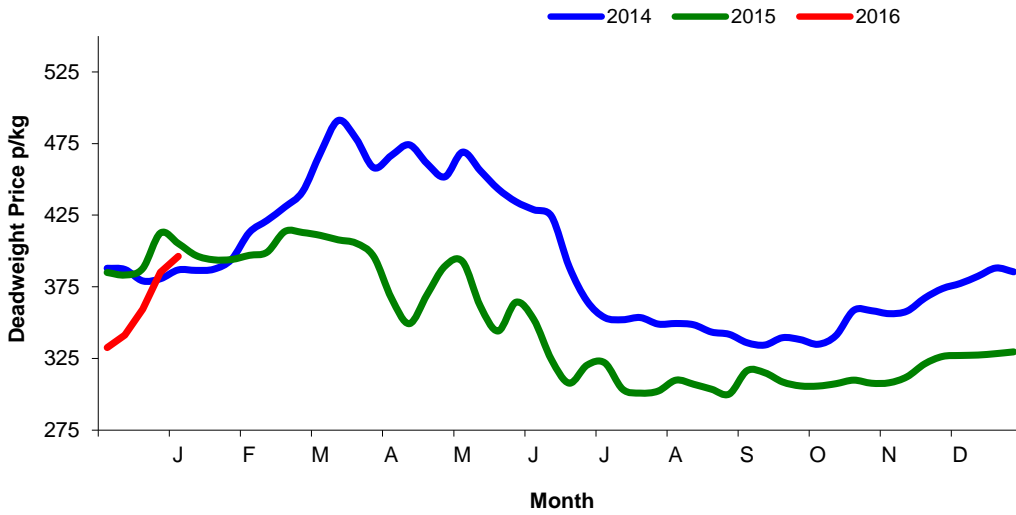


NI Weekly Cow Slaughtering



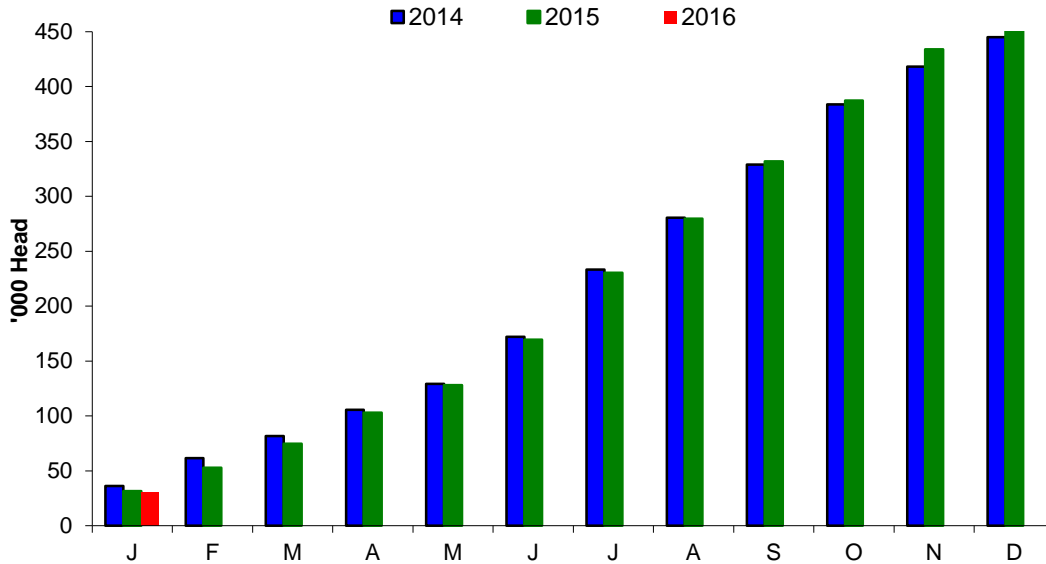
Sheep Prices

Average Deadweight NI Hogget / Lamb Price

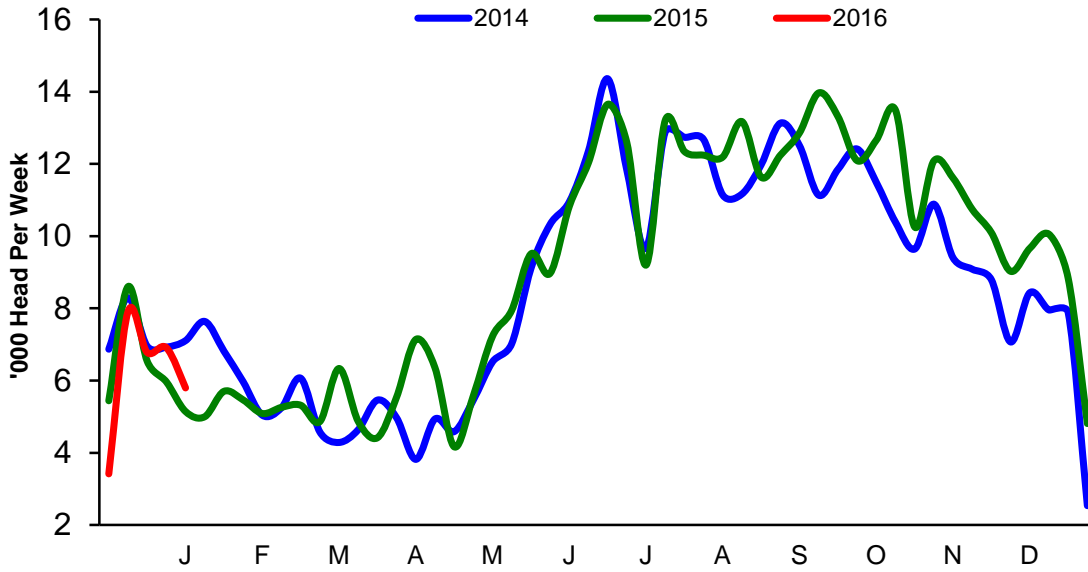


Sheep Slaughtering

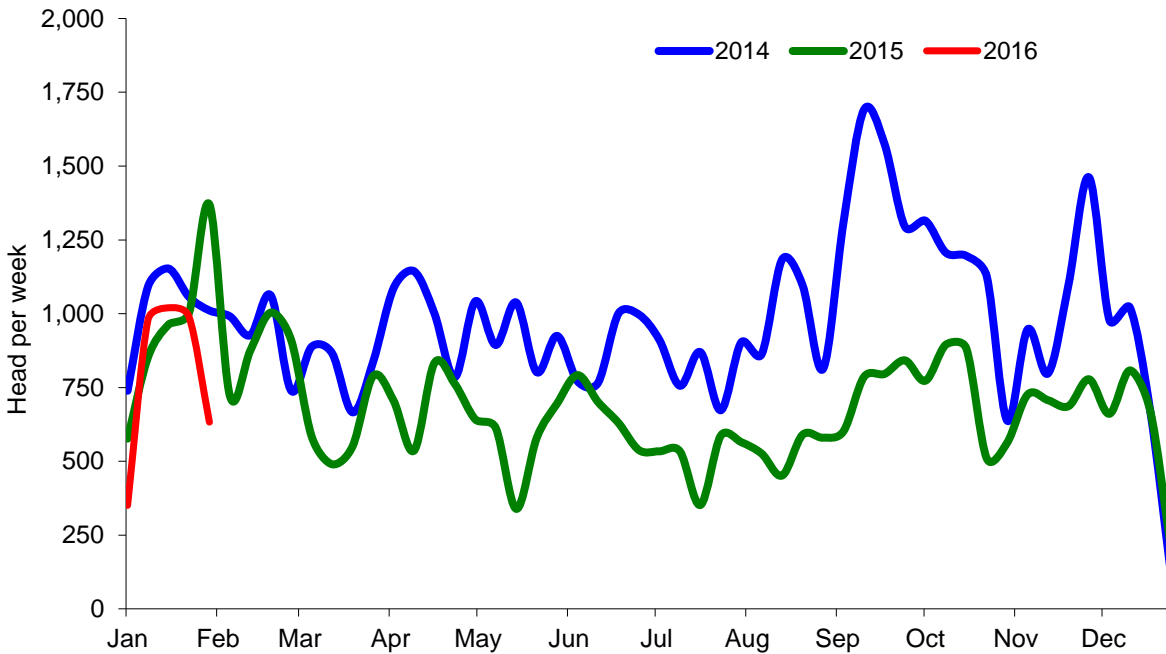
Cumulative Lamb & Hogget Slaughtering



Total Weekly Lamb & Hogget Slaughtering



Total Weekly Ewe and Ram Slaughtering



Market Information January 2016
Page 9

NI CATTLE AND SHEEP SLAUGHTERINGS FOR THE FOODCHAIN						
	January			Year to Date		
	(5 weeks ended 30/01/16)			(5 weeks ended 30/01/16)		
	Jan-15	Jan-16	% Change	2015	2016	Change
CATTLE						
Steers	16,661	14,422	-13%	16,661	14,422	-13%
Heifers	12,913	11,299	-12%	12,913	11,299	-12%
Young Bulls / Calves	2,728	3,312	+21%	2,728	3,312	+21%
Total Prime Cattle	32,302	29,033	-10%	32,302	29,033	-10%
Calves	636	640	+1%	636	640	+0%
Cows	7,961	8,559	+8%	7,961	8,559	+8%
Mature Bulls	319	286	-10%	319	286	-10%
Total Cattle	41,218	38,518	-7%	41,218	38,518	-7%
SHEEP						
Lambs & Hoggets	31,689	30,813	-3%	31,689	30,813	-3%
Ewes & Rams	4,765	3,974	-17%	4,765	3,974	-17%
Total Sheep	36,454	34,787	-5%	36,454	34,787	-5%

The above figures are provisional; any amendments will be incorporated in the cumulative data (source DARD).

NI BEEF AND SHEEPMET PRODUCTION - FOODCHAIN						
	January			Year to Date		
	(4 weeks ended 30/01/16)			(5 weeks ended 30/01/16)		
	Jan-15	Jan-16	% Change	2015	2016	Change
BEEF						
Steers	5,812	5,159	-11%	5,812	5,159	-11%
Heifers	4,127	3,659	-11%	4,127	3,659	-11%
Young Bulls	889	1,106	+24%	889	1,106	+24%
Total Prime Beef	10,829	9,924	-8%	10,829	9,924	-8%
Calves	128	132	+3%	128	132	+3%
Cows	2,430	2,639	+9%	2,430	2,639	+9%
Mature Bulls	139	133	-4%	139	133	-4%
Total Beef	13,526	12,827	-5%	13,526	12,827	-5%
SHEEPMET						
Lambs & Hoggets	712	675	-5%	712	675	-5%
Ewes & Rams	127	107	-16%	127	107	-16%
Total Sheepmeat	839	782	-7%	839	782	-7%

The above figures are provisional; any amendments will be incorporated in the cumulative data (source DARD).

Market Information January 2016
Page 10

Total Carcase Weight Produced for the Food Chain
Year-to-Date (tonnes – t.)

Month	Prime Cattle		Cows & Bulls		Lambs/Hoggets		Ewes & Rams	
	2015	2016	2015	2016	2015	2016	2015	2016
January	10,829	9,924	2,569	2,772	712	675	127	107
February								
March								
April								
May								
June								
July								
August								
September								
October								
November								
December								
Total	10,829	9,924	2,569	2,772	712	675	127	107
Change (t.)	-905		202		-37		-21	
% Change	-8.36%		7.87%		-5.14%		-16.14%	

**excludes calves*

Change in Throughput / Production
Last 4 weeks 2015/2016

Change in Throughput / Production 2015/2016

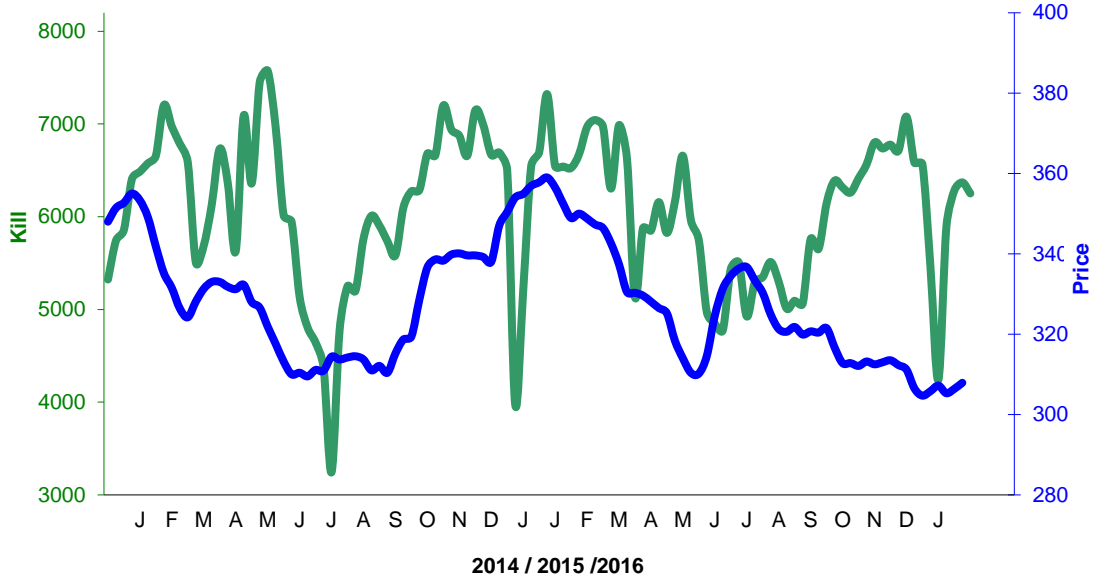
JANUARY

2014/2015	Number	Tonnage	ACW Kg
Prime	-10.1%	-8.4%	6.68
Cows	7.5%	8.6%	2.63
Total	-6.6%	-5.2%	4.75
Lamb	-2.8%	-5.1%	-0.48
Ewes and Rams	-16.6%	-16.1%	0.19
Total Sheep	-4.6%	-6.8%	-0.51

Supply and Price

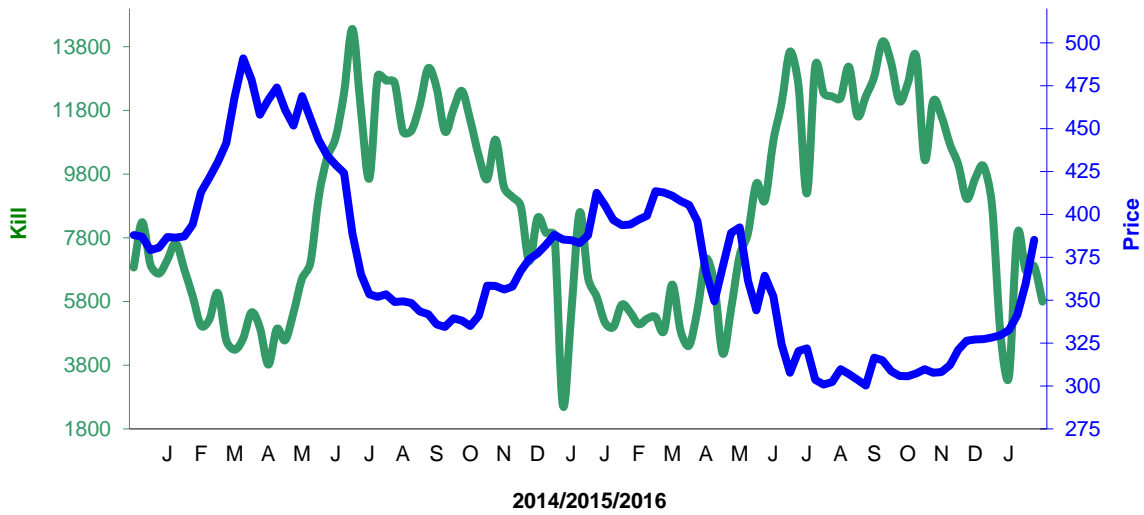
NI Clean Cattle Kill vs. Average Clean Cattle Price

NI Prime Cattle Kill vs Deadweight Prime Cattle Price



NI Lamb/Hogget Kill vs. Average Lamb / Hogget Price

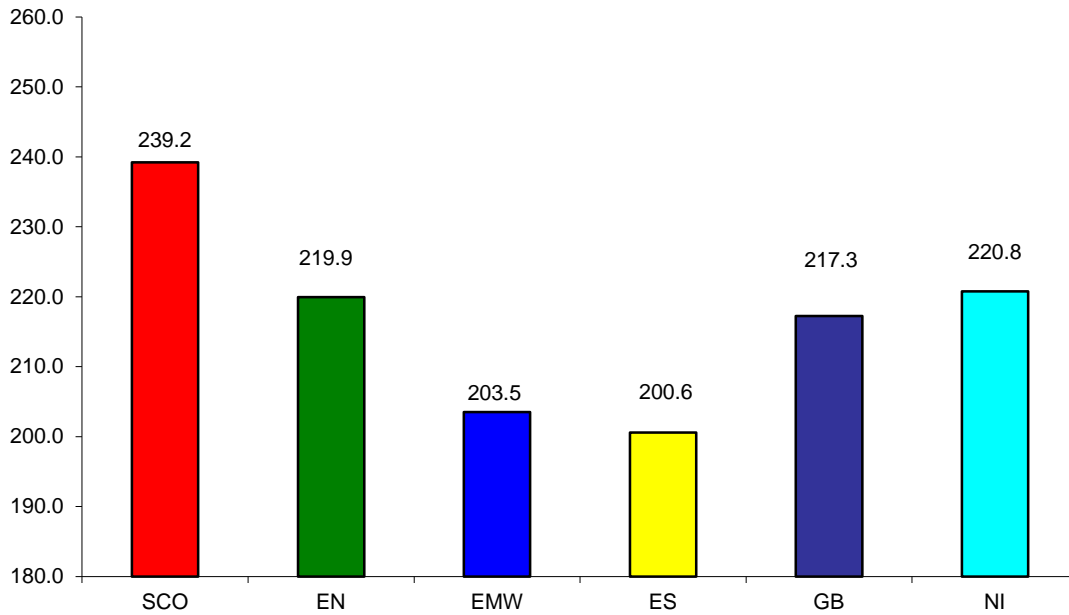
NI Lamb/Hogget Slaughter versus Deadweight Lamb/Hogget Price



Green	Supply (Kill)
Blue	Price

BRITISH ISLES COMPARISONS

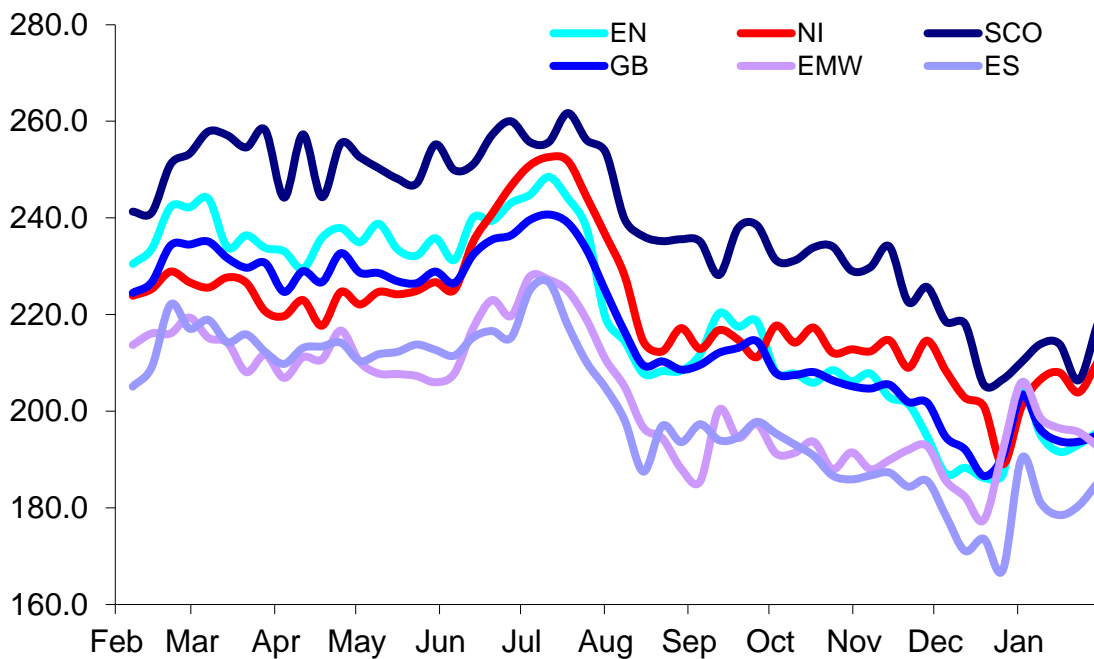
UK Average Cow Prices
52 Weeks to 31 January 2016



SCO	Scotland
EN	England North
EMW	England Midlands and Wales
ES	England South
NI	Northern Ireland
GB	Great Britain

Prices relate to UK Dressing Specification

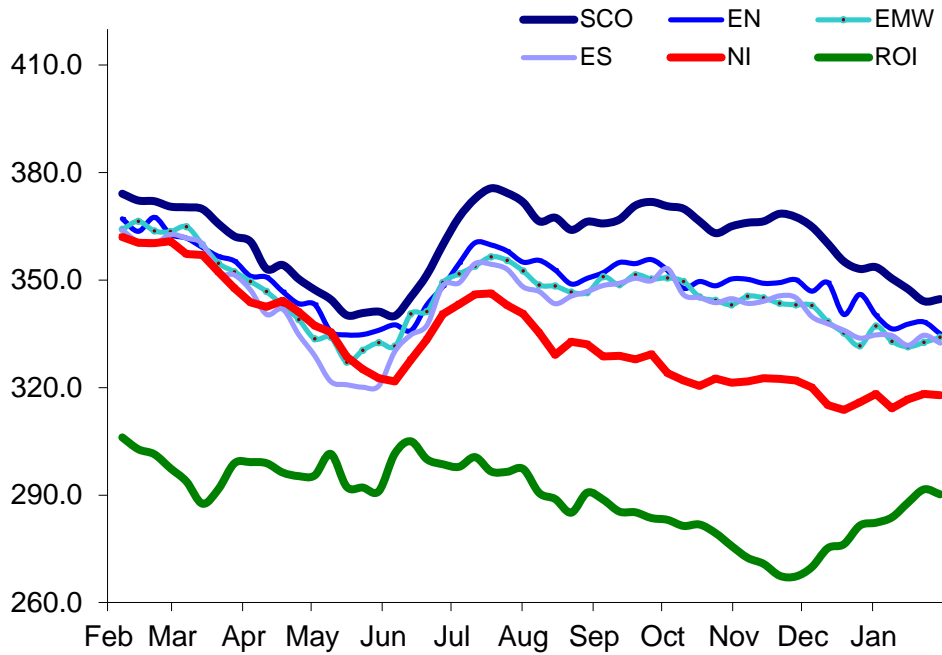
Weekly UK Cow Prices
52 Weeks to 31 January 2016



Market Information January 2016
Page 13

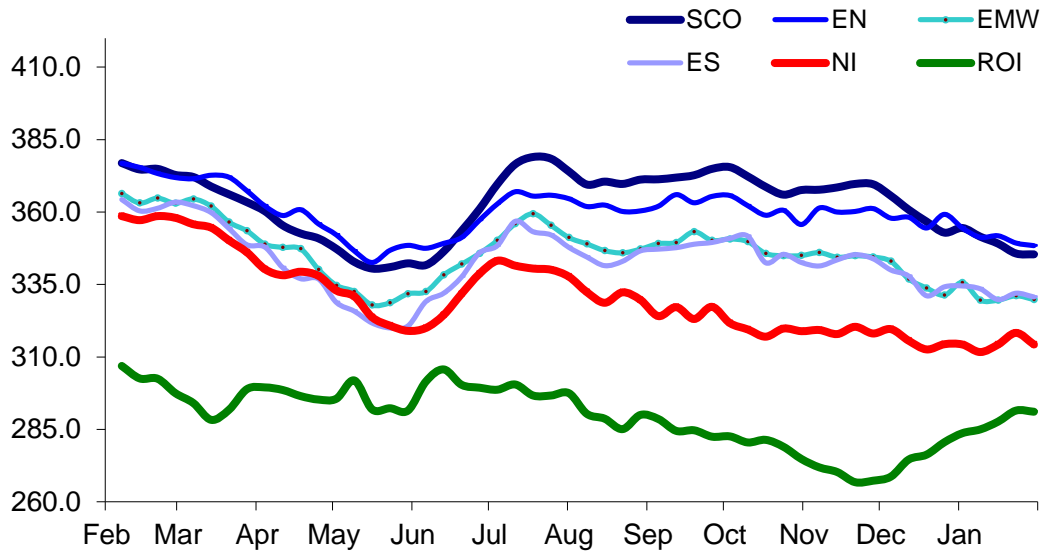
Prices relate to UK Dressing Specification

British Isles R3 Steer Price
52 Weeks to 31 January 2016



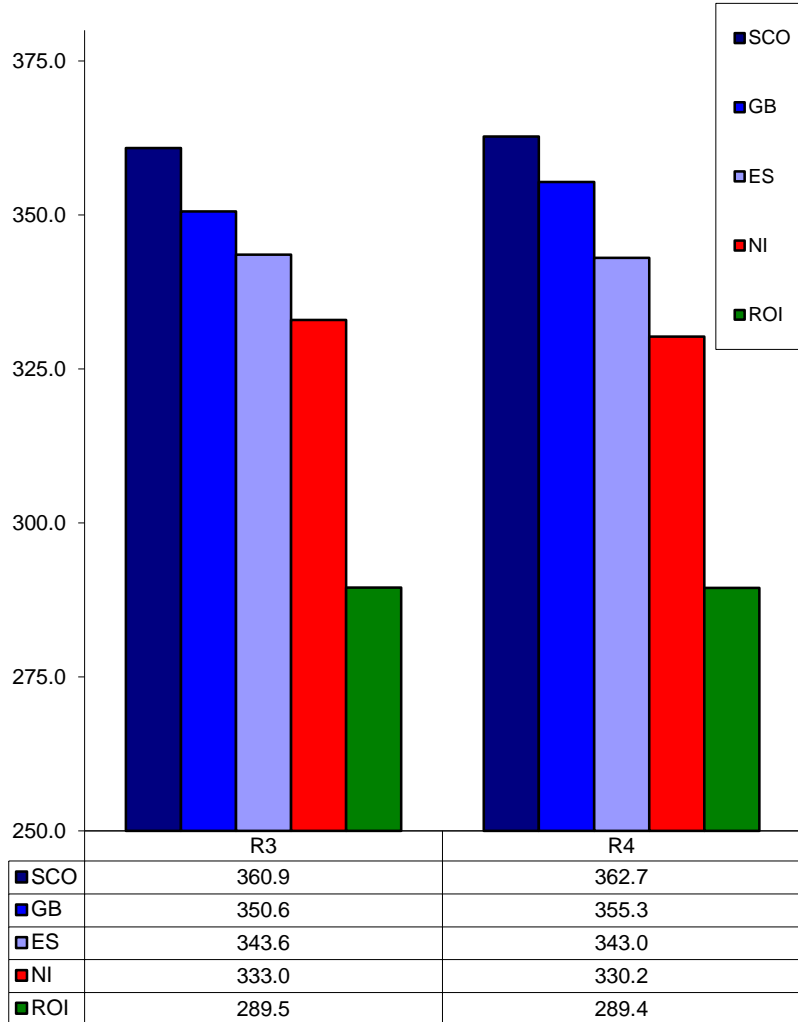
Prices relate to UK Dressing Specification

British Isles R4 Steer Price
52 Weeks to 31 January 2016



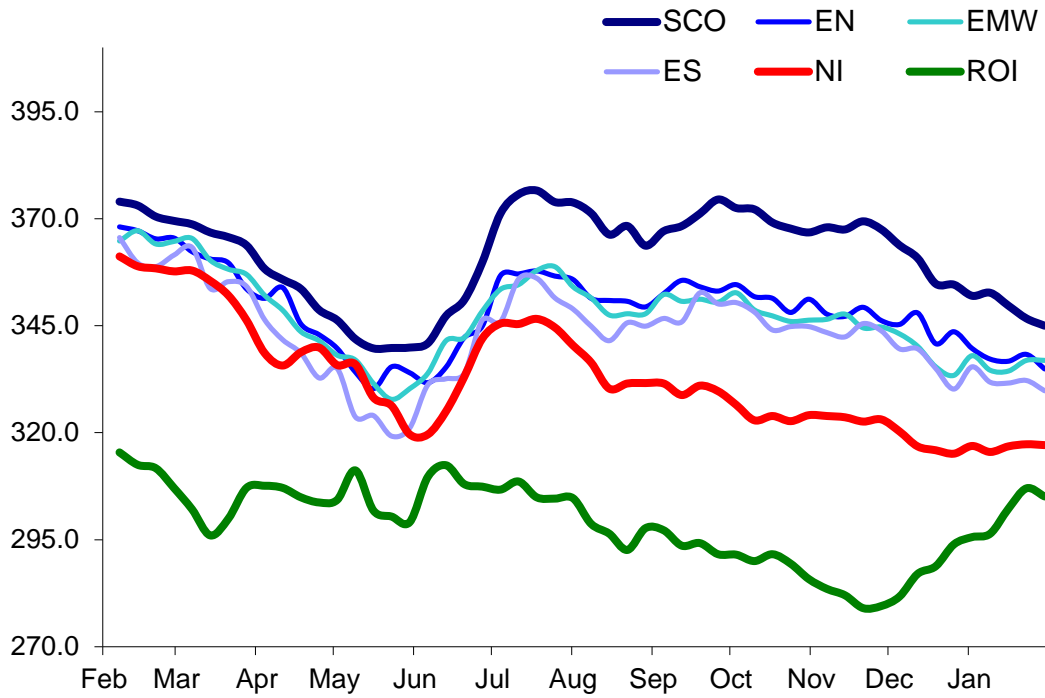
Prices relate to UK Dressing Specification

British Isles Average R3 and R4 Steer price
52 Weeks to 31 January 2016



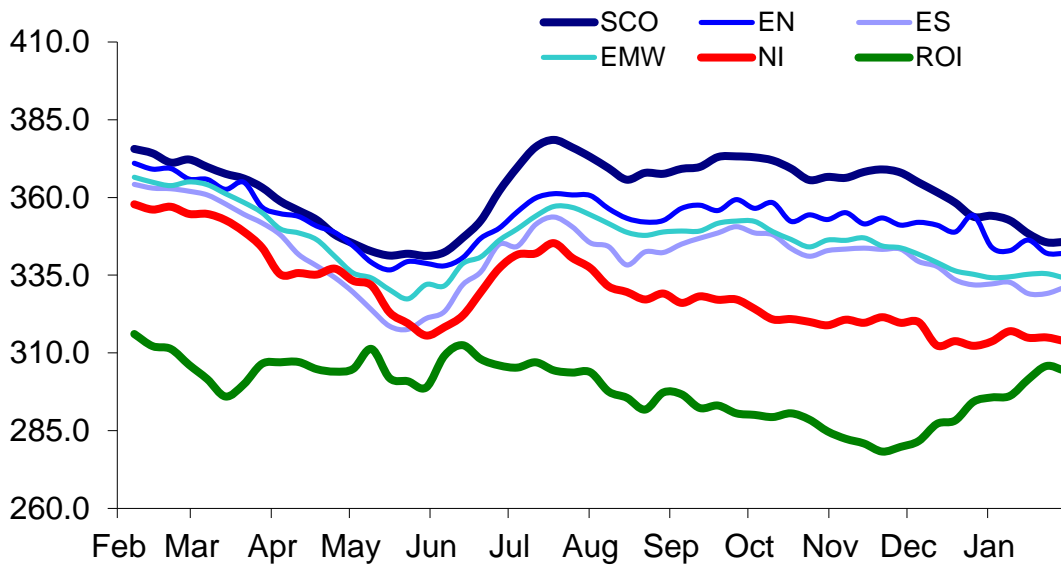
Prices relate to UK Dressing Specification

British Isles R3 Heifer Price
52 Weeks to 31 January 2016



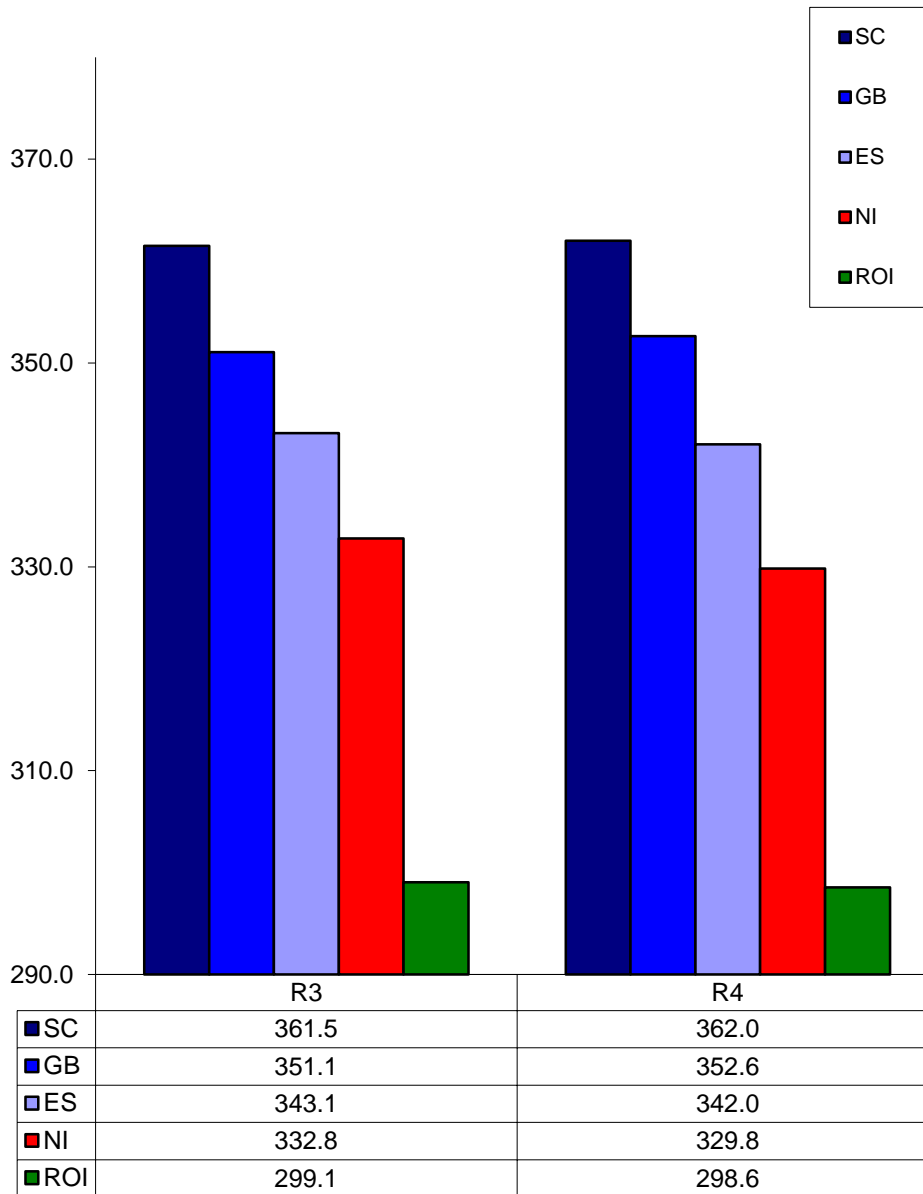
Prices relate to UK Dressing Specification

British Isles R4 Heifer Price
52 Weeks to 31 January 2016



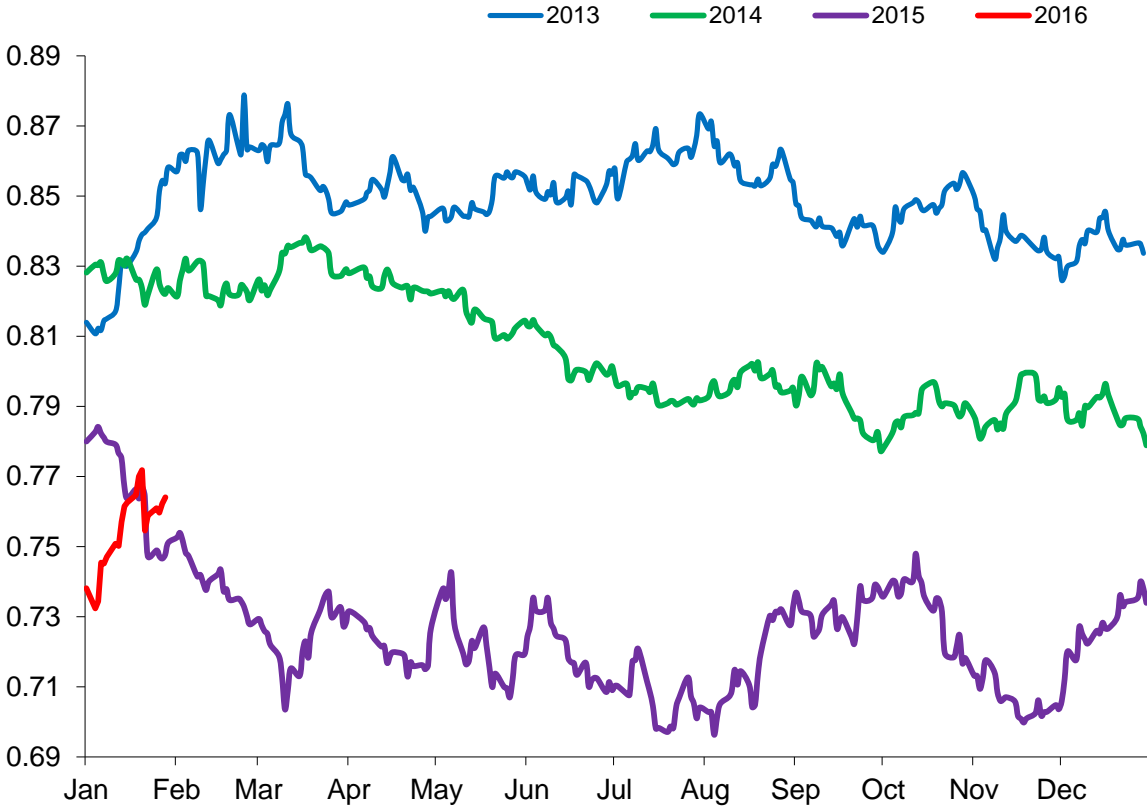
Prices relate to UK Dressing Specification

British Isles Average R3 and R4 Heifer price
52 Weeks to 31 January 2016



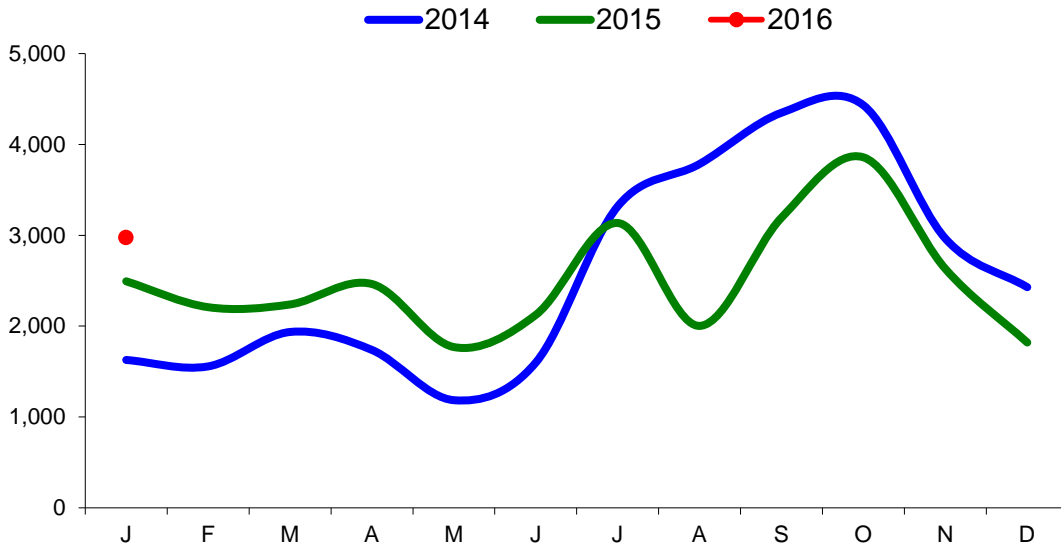
Prices relate to UK Dressing Specification

Exchange Rate £ / Euro
01 January 2013 – 31 January 2016

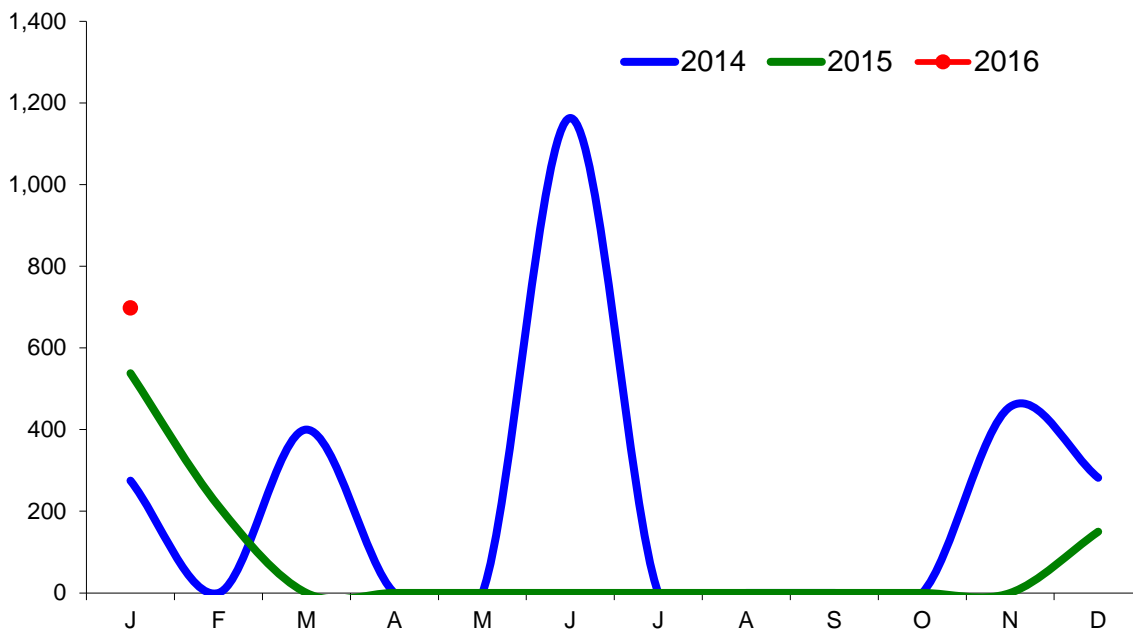


Imports

Monthly Live Imports of Cattle into NI for Direct Slaughter From ROI and GB Combined

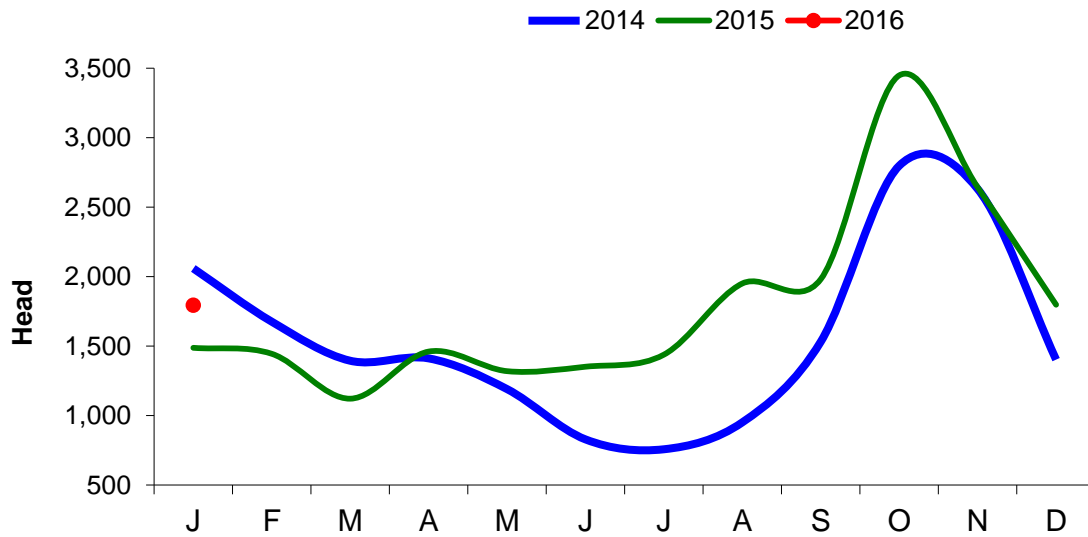


Monthly Live Imports of Sheep into NI for Direct Slaughter From ROI and GB Combined



Exports

Monthly Live Exports of Cattle from NI into ROI and GB



Monthly Live Exports of Sheep from NI into ROI and GB

