

LMC

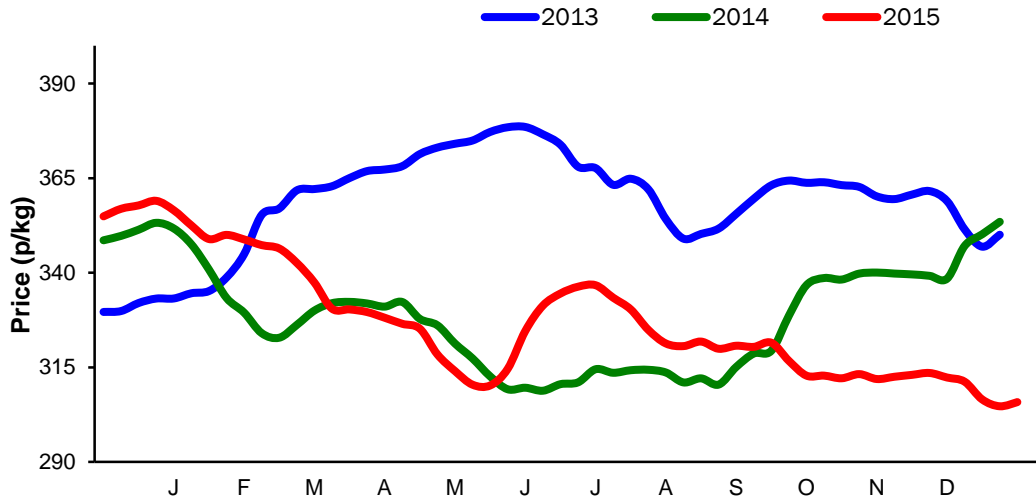
**Monthly Economic Review
December 2015**

Contents

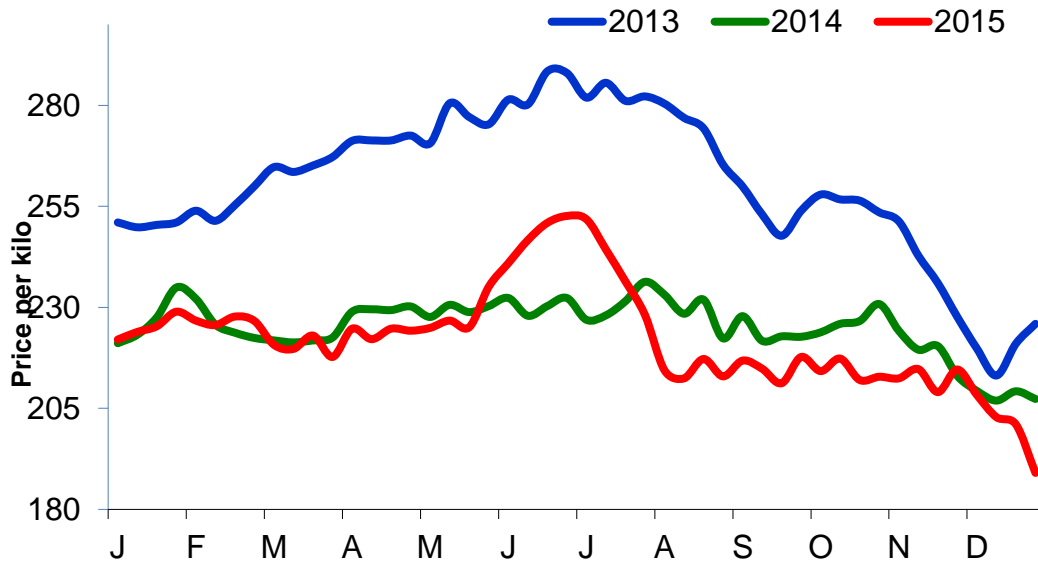
Contents	3
Cattle Prices.....	4
Average NI Clean Cattle Price.....	4
Average NI Cow Price	4
Cattle Slaughtering.....	5
NI Clean Cattle Slaughtering – Cumulative	5
NI Weekly Clean Cattle Slaughtering	5
NI Weekly Cow Slaughtering.....	5
Sheep Prices.....	6
Average NI Lamb / Hogget Price	6
Sheep Slaughtering.....	7
Cumulative Lamb & Hogget Slaughtering.....	7
Total Weekly Lamb & Hogget Slaughtering.....	7
Total Weekly Ewe and Ram Slaughtering	7
Total Carcase Weight Produced for the Food Chain.....	8
Change in Throughput / Production	9
Supply and Price.....	10
NI Lamb/Hogget Kill vs. Average Lamb / Hogget Price	10
NI Clean Cattle Kill vs. Average Clean Cattle Price.....	10
British Isles Price Comparisons	11
UK Average Cow Prices	11
Weekly UK Cow Prices	11
British Isles R3 Steer Price	12
British Isles R4 Steer Price	12
British Isles Average R3 and R4 Steer price	13
British Isles R3 Heifer Price	14
British Isles R4 Heifer Price	14
British Isles Average R3 and R4 Heifer price	15
Exchange Rate £ / Euro.....	17
Imports.....	18
Monthly Live Imports of Cattle into NI for Direct Slaughter.....	18
Monthly Live Imports of Sheep into NI for Direct Slaughter.....	18
Exports.....	19
Monthly Live Exports of Cattle from NI into Rol and GB.....	19
Monthly live Exports of Sheep from NI into Rol and GB.....	19

Cattle Prices

Average NI Clean Cattle Price

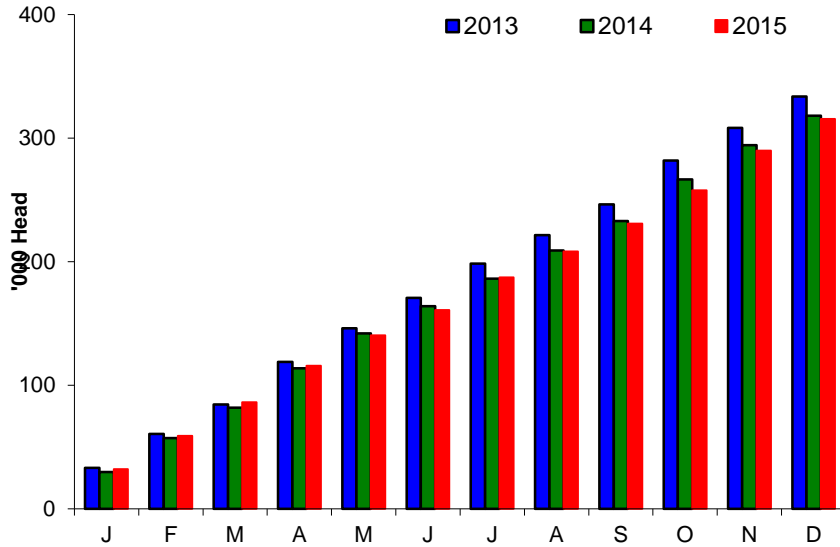


Average NI Cow Price

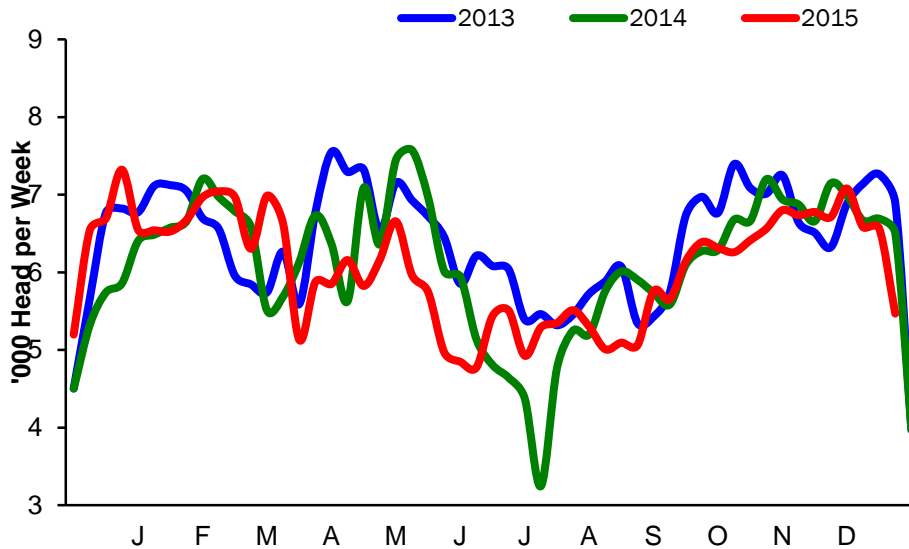


Cattle Slaughtering

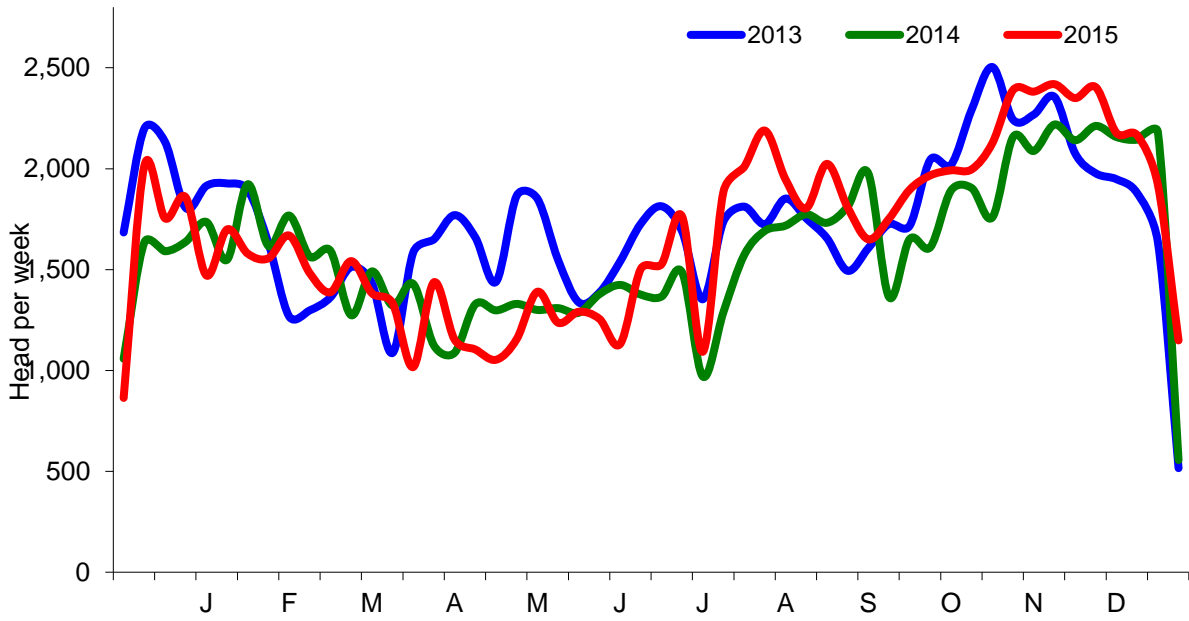
NI Clean Cattle Slaughtering – Cumulative



NI Weekly Clean Cattle Slaughtering

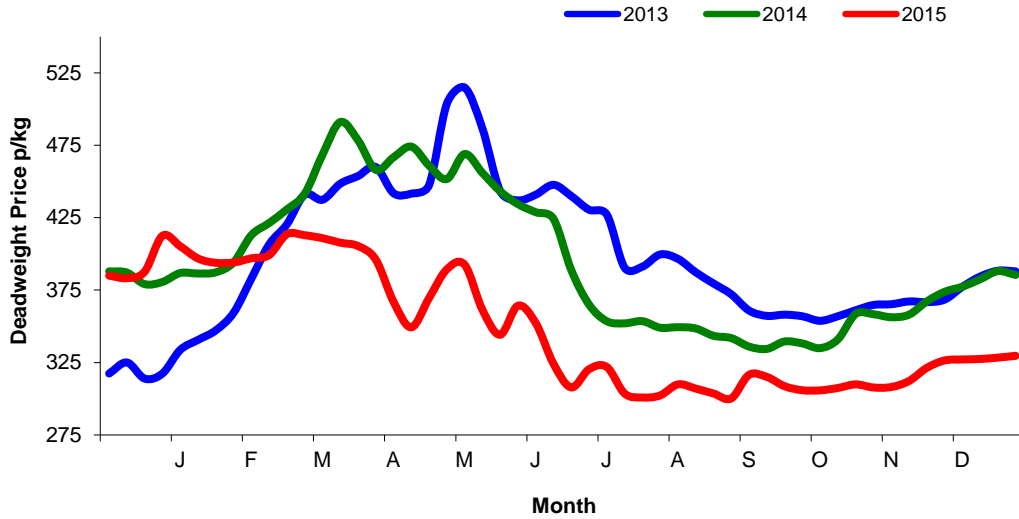


NI Weekly Cow Slaughtering



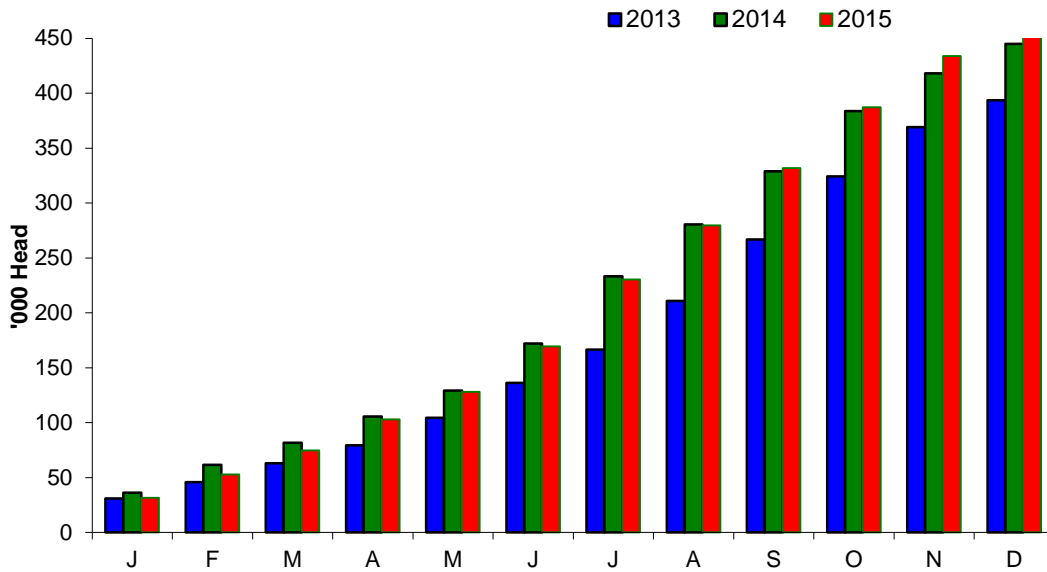
Sheep Prices

Average Deadweight NI Hogget / Lamb Price

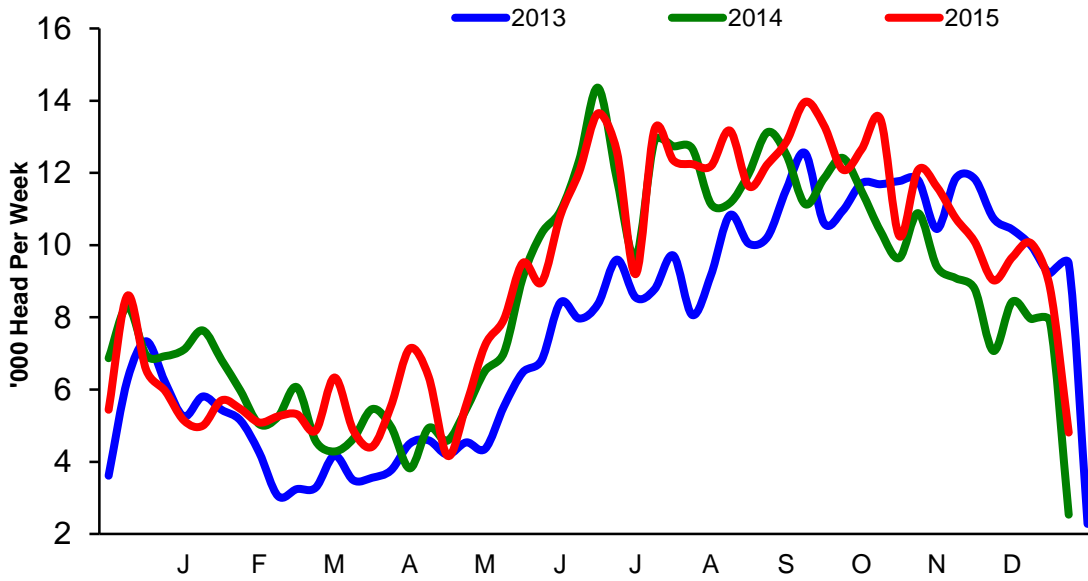


Sheep Slaughtering

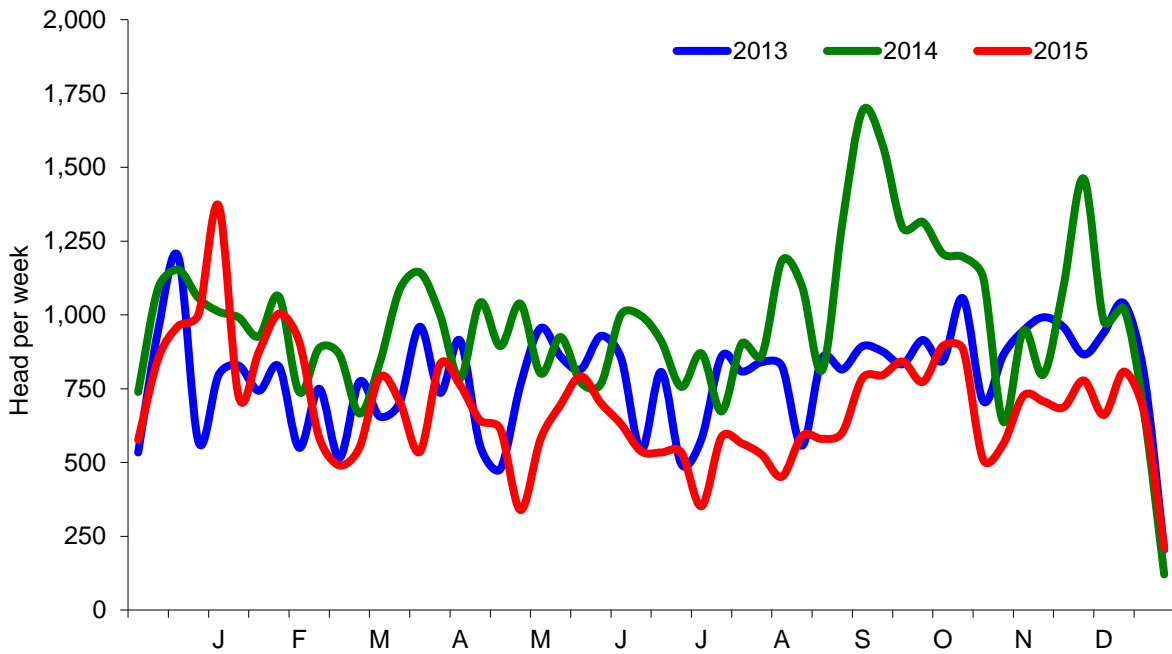
Cumulative Lamb & Hogget Slaughtering



Total Weekly Lamb & Hogget Slaughtering



Total Weekly Ewe and Ram Slaughtering



Market Information December 2015
Page 9

NI CATTLE AND SHEEP SLAUGHTERINGS FOR THE FOODCHAIN						
	December			Year to Date		
	(4 weeks ended 26/12/15)			(52 weeks ended 26/12/15)		
	Dec-14	Dec-15	% Change	2014	2015	Change
CATTLE						
Steers	12,411	13,837	+11%	153,903	167,910	+9%
Heifers	9,427	9,341	-1%	120,454	116,692	-3%
Young Bulls / Calves	2,000	2,519	+26%	43,862	30,883	-30%
Total Prime Cattle	23,838	25,697	+8%	318,219	315,485	-1%
Calves	449	598	+33%	9,163	6,499	+0%
Cows	7,039	7,413	+5%	82,855	87,110	+5%
Mature Bulls	402	294	-27%	6,752	3,968	-41%
Total Cattle	31,728	34,002	+7%	416,989	413,062	-1%
SHEEP						
Lambs & Hoggets	26,810	33,359	+24%	444,943	467,320	+5%
Ewes & Rams	2,788	2,347	-16%	50,797	35,672	-30%
Total Sheep	29,598	35,706	+21%	495,740	502,992	+1%

The above figures are provisional; any amendments will be incorporated in the cumulative data (source DARD).

NI BEEF AND SHEEPMET PRODUCTION - FOODCHAIN						
	December			Year to Date		
	(4 weeks ended 26/12/15)			(52 weeks ended 26/12/15)		
	Dec-14	Dec-15	% Change	2013	2014	Change
BEEF						
Steers	4,330	4,960	+15%	53,227	59,391	+12%
Heifers	2,959	3,025	+2%	37,613	37,310	-1%
Young Bulls	659	847	+29%	14,499	10,422	-28%
Total Prime Beef	7,947	8,832	+11%	105,303	107,122	+2%
Calves	84	117	+39%	1,950	1,352	-31%
Cows	2,077	2,247	+8%	25,200	26,630	+6%
Mature Bulls	175	136	-22%	2,740	1,791	-35%
Total Beef	10,283	11,331	+10%	135,193	136,896	+1%
SHEEPMET						
Lambs & Hoggets	597	728	+22%	9,668	10,129	+5%
Ewes & Rams	76	61	-20%	1,419	994	-30%
Total Sheepmeat	673	789	+17%	11,087	11,122	+0%

The above figures are provisional; any amendments will be incorporated in the cumulative data (source DARD).

Market Information December 2015
Page 10

Total Carcase Weight Produced for the Food Chain
Year-to-Date (tonnes – t.)

Month	Prime Cattle		Cows & Bulls		Lambs/Hoggets		Ewes & Rams	
	2014	2015	2014	2015	2014	2015	2014	2015
January	9,784	10,829	2,518	2,569	797	712	143	127
February	9,000	8,936	2,346	2,086	561	476	104	92
March	8,093	9,207	2,203	1,882	446	482	95	66
April	10,615	9,939	2,189	1,917	520	629	150	97
May	9,475	8,318	1,841	1,579	505	537	108	66
June	7,255	6,860	1,897	1,734	898	891	105	81
July	7,349	9,033	2,309	2,779	1,337	1,302	118	77
August	7,555	7,085	2,320	2,578	999	1,041	111	62
September	7,823	7,778	2,261	2,326	1,041	1,121	151	86
October	11,219	10,983	3,046	3,453	1,204	1,306	148	100
November	9,188	9,359	2,759	3,135	763	905	112	78
December	7,947	8,832	2,252	2,383	597	728	76	61
Total	105,303	107,159	27,940	28,422	9,668	10,129	1,419	994
Change (t.)	1,857		482		461		-425	
% Change	1.76%		1.72%		4.76%		-29.97%	

**excludes calves*

Change in Throughput / Production
Last 4 weeks 2014/2015

Change in Throughput / Production 2014/2015

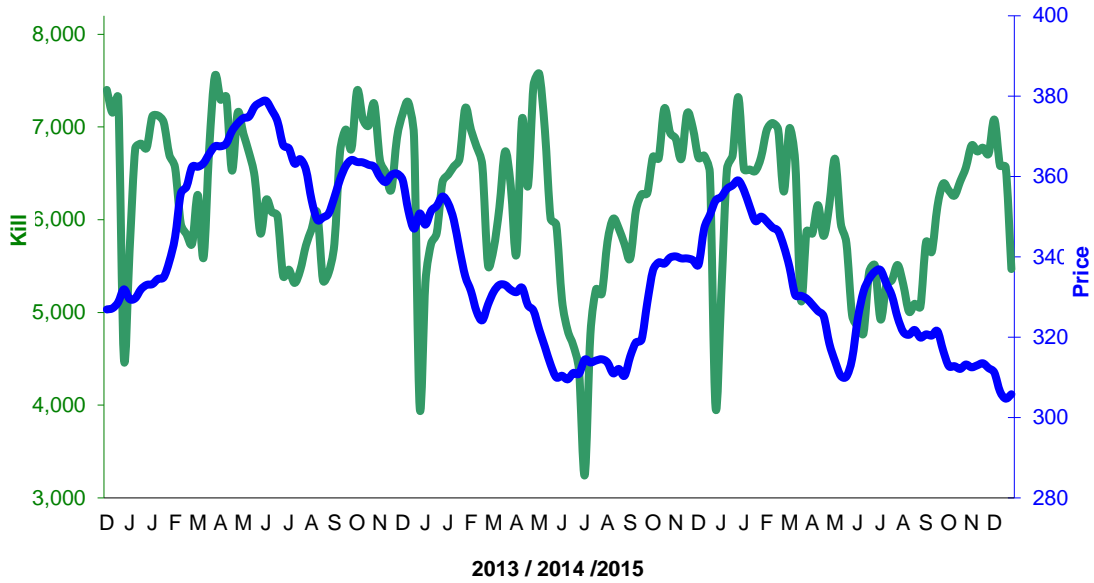
December

2014/2015	Number	Tonnage	ACW Kg
Prime	7.8%	11.1%	10.01
Cows	5.3%	8.2%	4.87
Total	7.2%	10.2%	7.82
Lamb	24.4%	21.9%	-0.49
Ewes and Rams	-15.8%	-19.6%	-0.64
Total Sheep	20.6%	17.2%	-0.64

Supply and Price

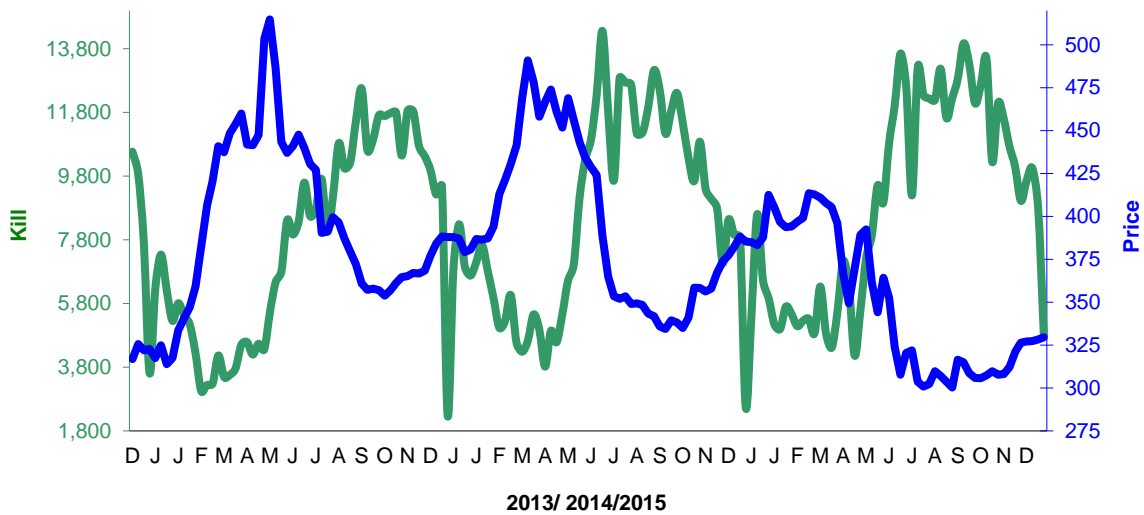
NI Clean Cattle Kill vs. Average Clean Cattle Price

NI Prime Cattle Kill vs Deadweight Prime Cattle Price



NI Lamb/Hogget Kill vs. Average Lamb / Hogget Price

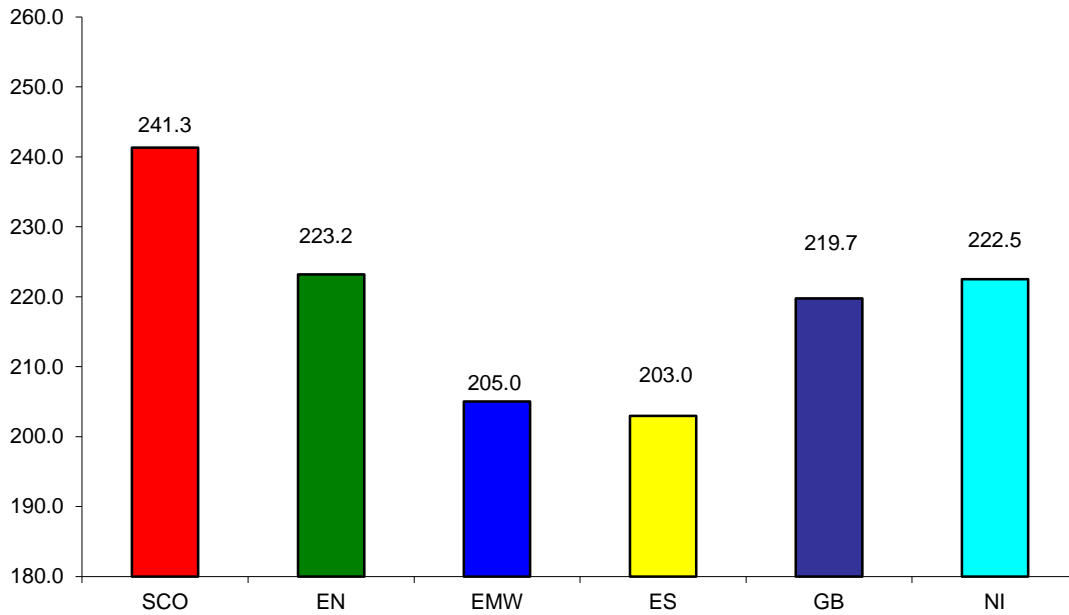
NI Lamb/Hogget Slaughter versus Deadweight Lamb/Hogget Price



Green	Supply (Kill)
Blue	Price

BRITISH ISLES COMPARISONS

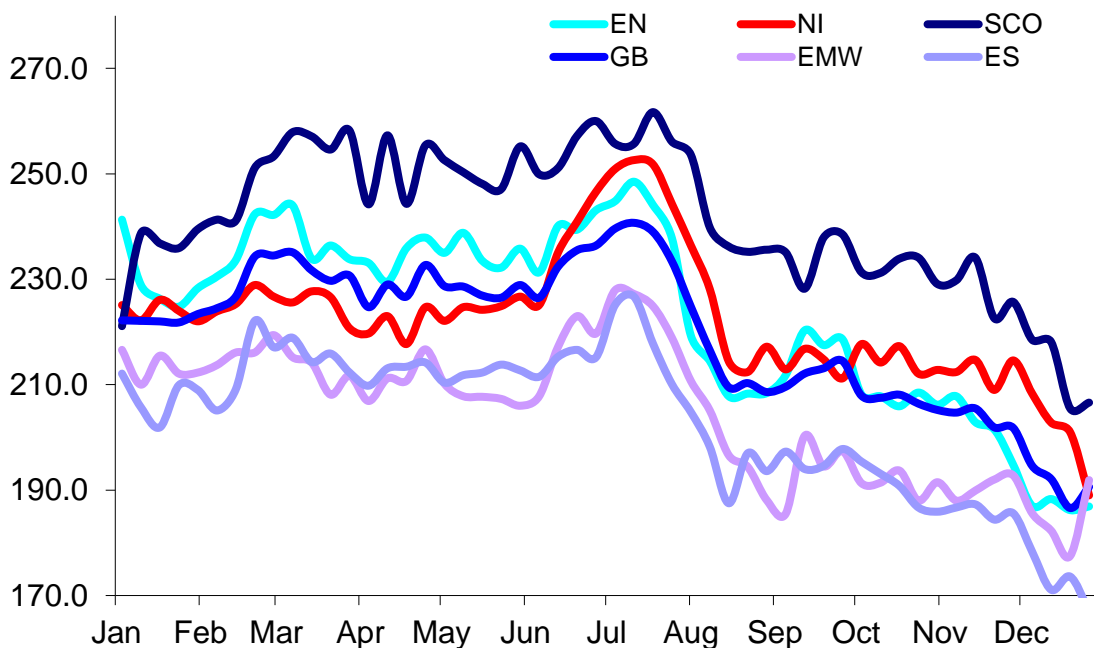
UK Average Cow Prices
52 Weeks to 26 December 2015



SCO	Scotland
EN	England North
EMW	England Midlands and Wales
ES	England South
NI	Northern Ireland
GB	Great Britain

Prices relate to UK Dressing Specification

Weekly UK Cow Prices
52 Weeks to 26 December 2015

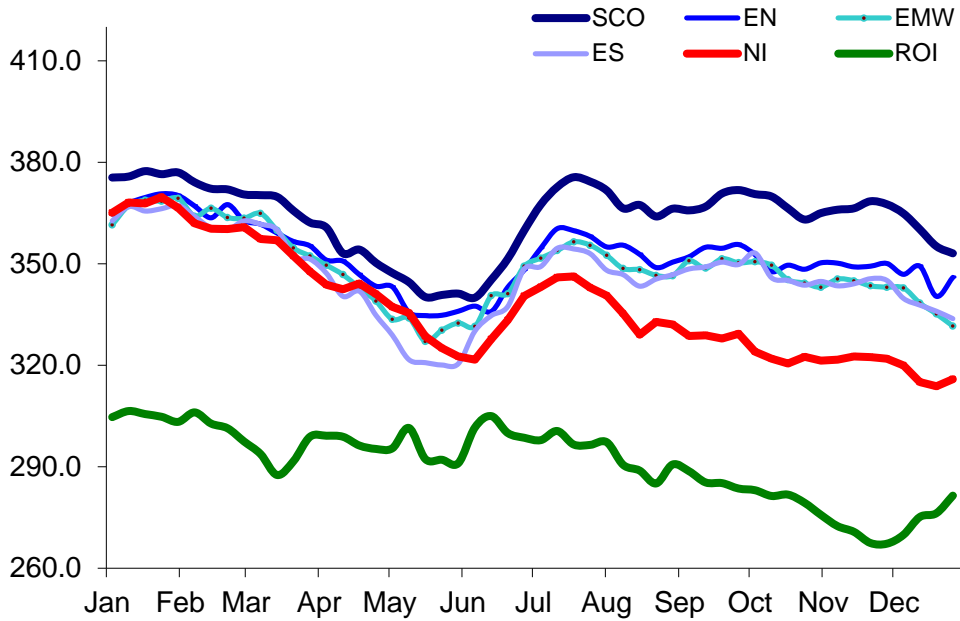


Market Information December 2015

Page 13

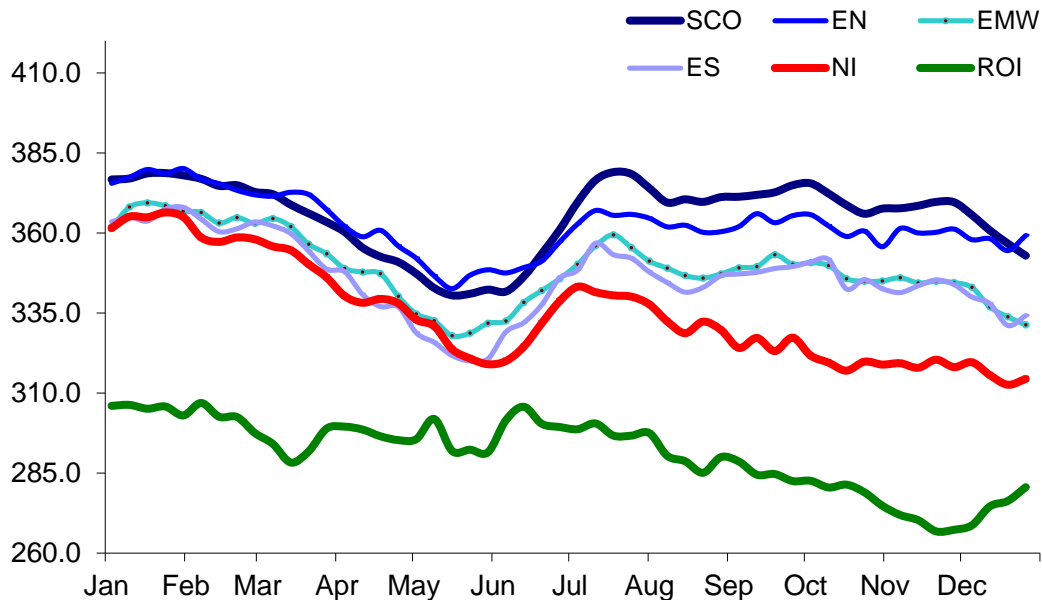
Prices relate to UK Dressing Specification

British Isles R3 Steer Price 52 Weeks to 26 December 2015



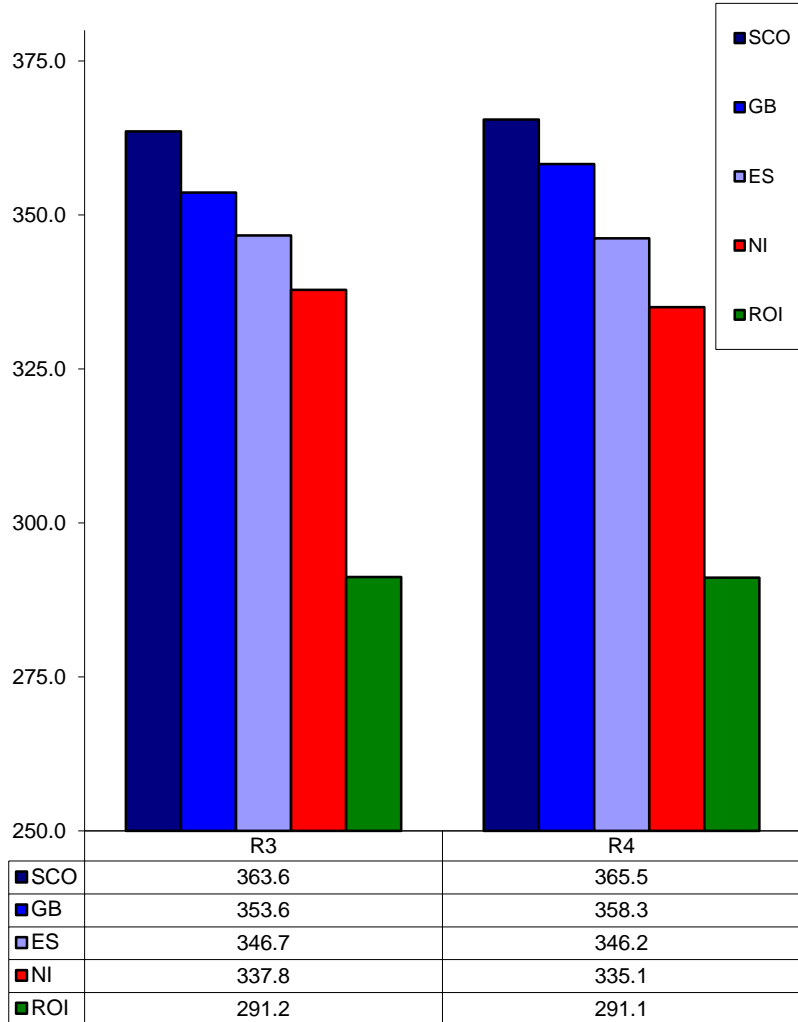
Prices relate to UK Dressing Specification

British Isles R4 Steer Price 52 Weeks to 26 December 2015



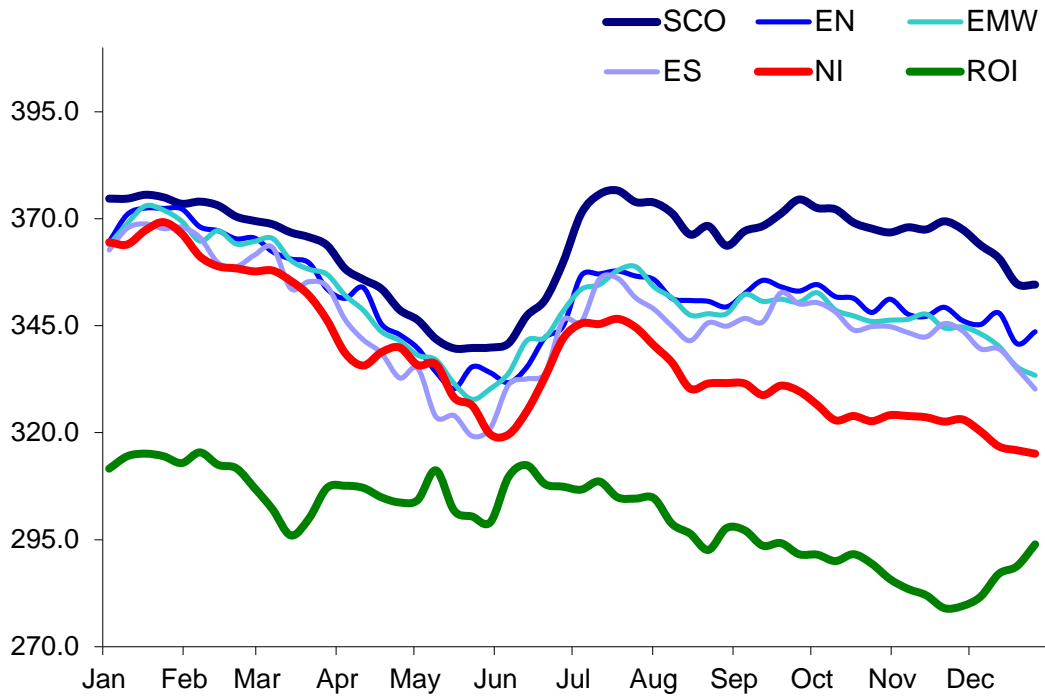
Prices relate to UK Dressing Specification

British Isles Average R3 and R4 Steer price
52 Weeks to 26 December 2015



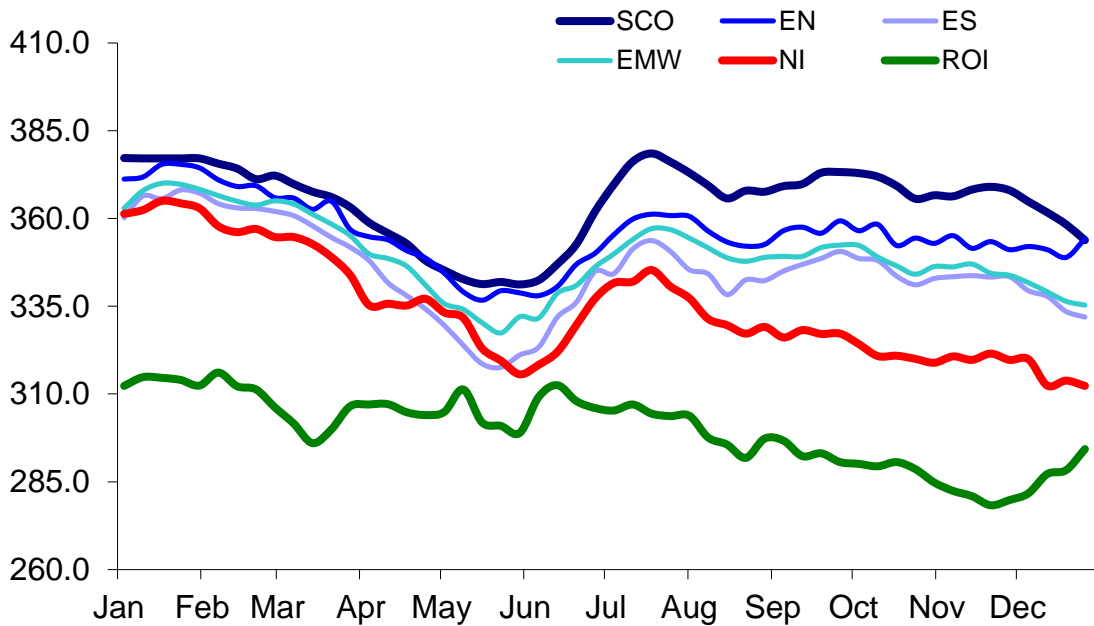
Prices relate to UK Dressing Specification

British Isles R3 Heifer Price
52 Weeks to 26 December 2015



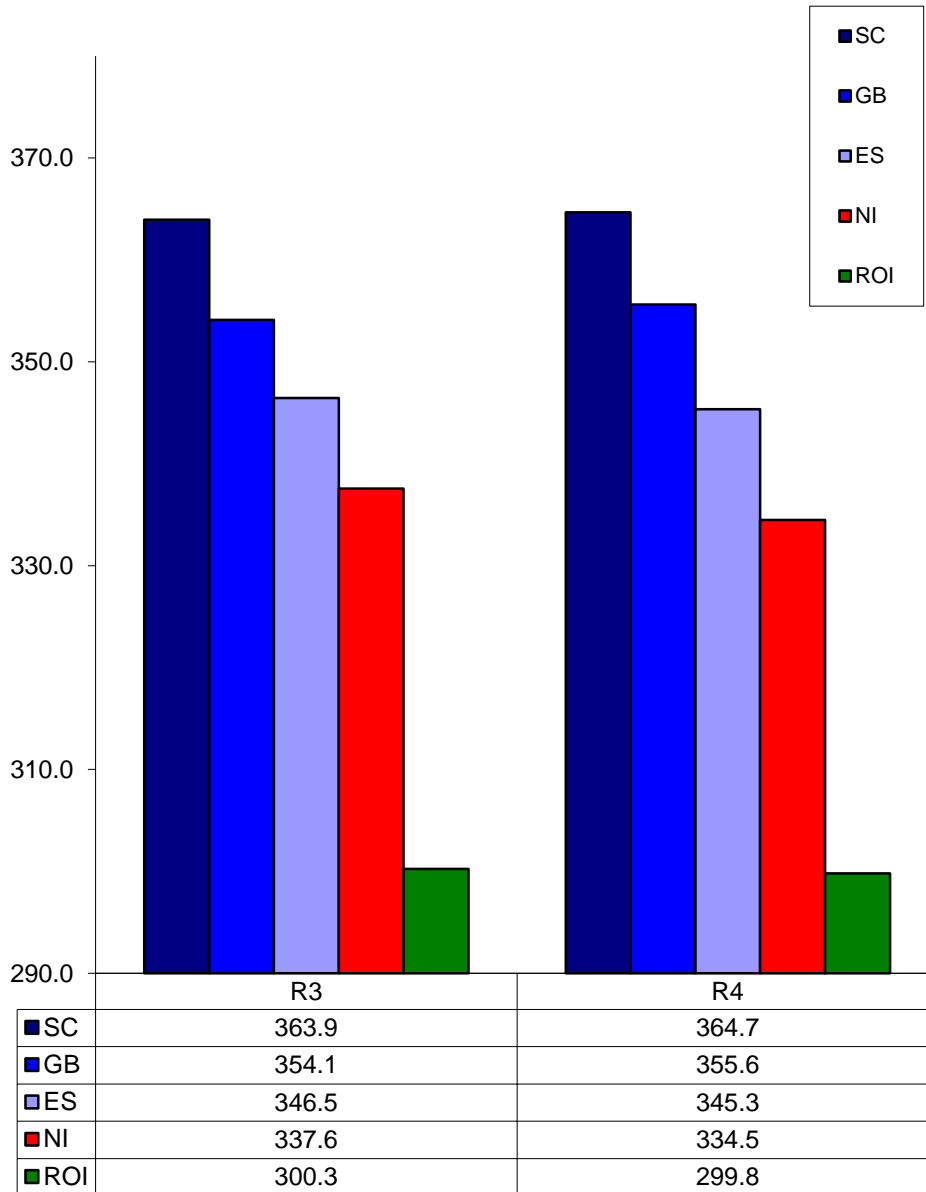
Prices relate to UK Dressing Specification

British Isles R4 Heifer Price
52 Weeks to 26 December 2015



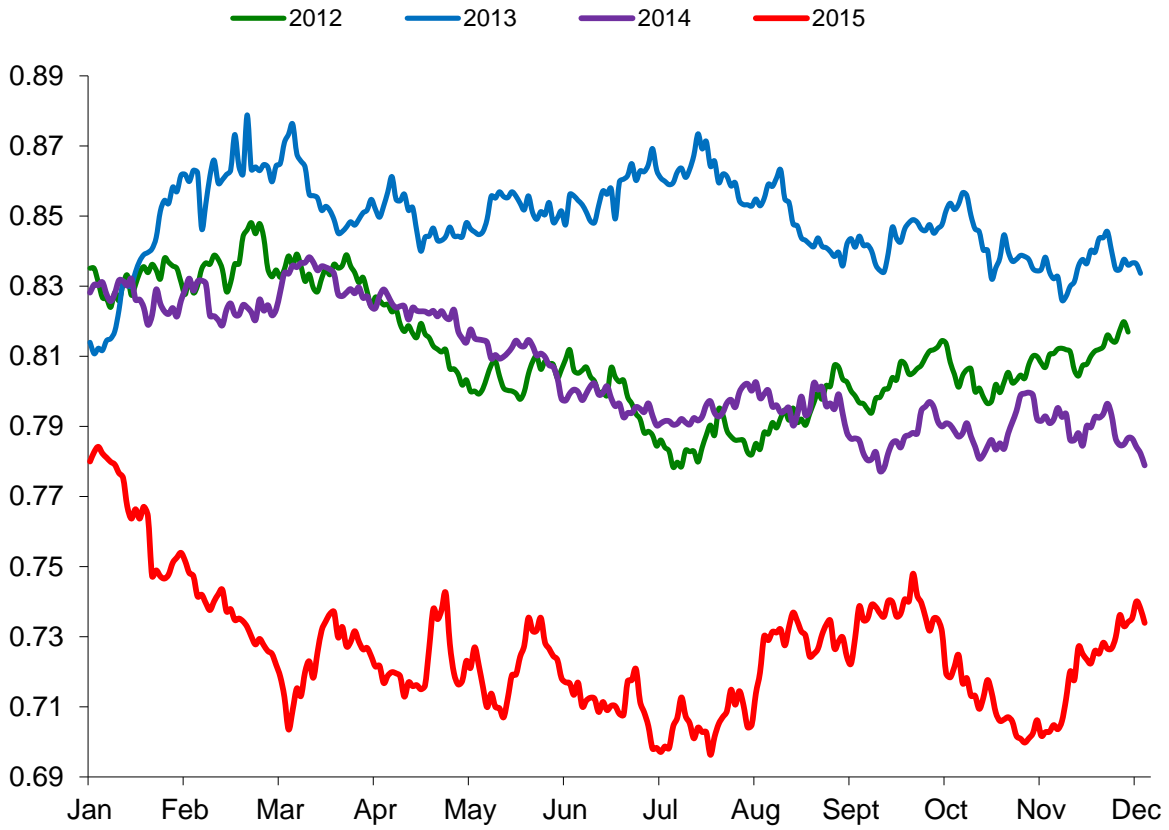
Prices relate to UK Dressing Specification

British Isles Average R3 and R4 Heifer price
52 Weeks to 26 December 2015



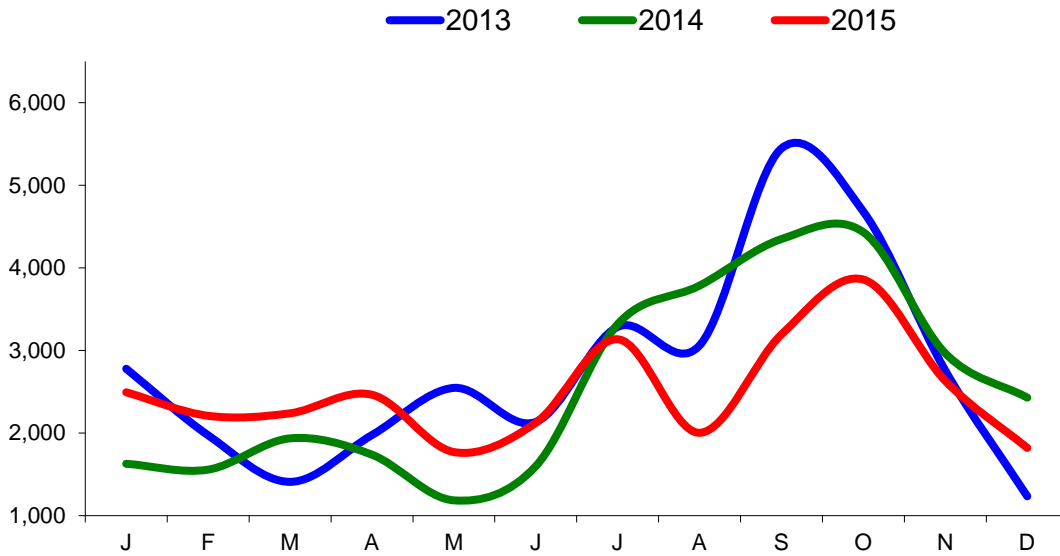
Prices relate to UK Dressing Specification

Exchange Rate £ / Euro
01 January 2012 – 31 December 2015

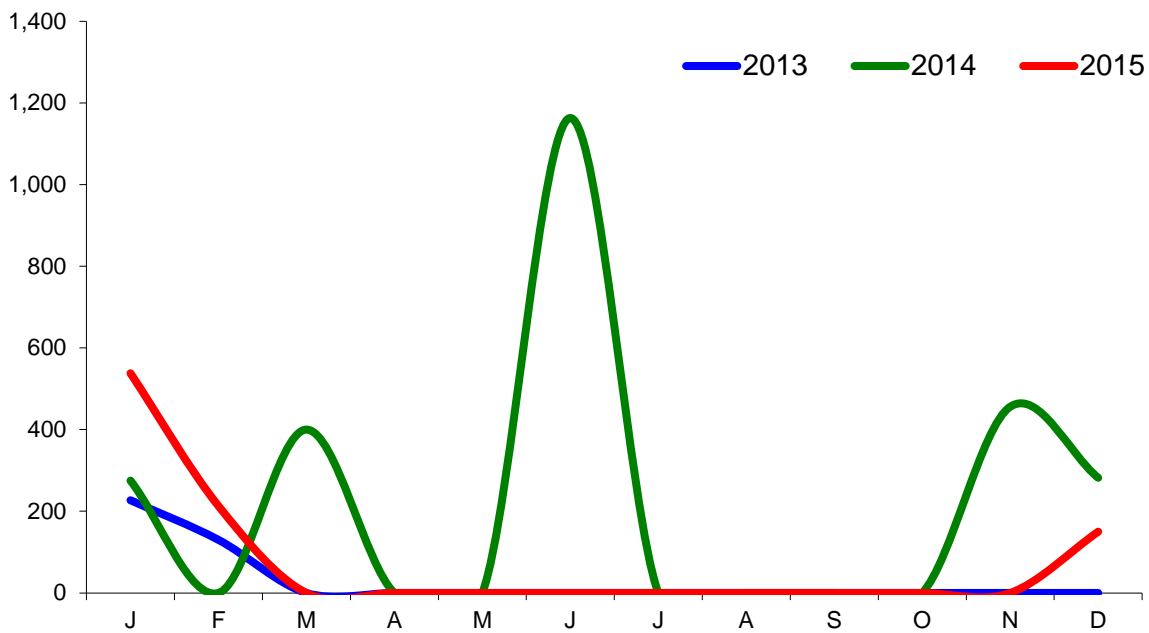


Imports

Monthly Live Imports of Cattle into NI for Direct Slaughter From ROI and GB Combined

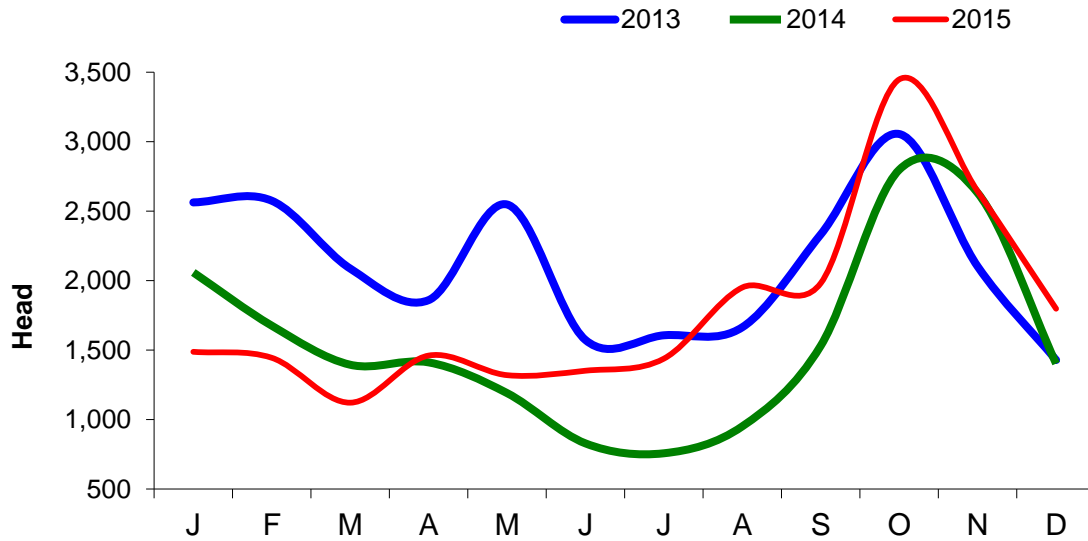


Monthly Live Imports of Sheep into NI for Direct Slaughter From ROI and GB Combined



Exports

Monthly Live Exports of Cattle from NI into ROI and GB



Monthly Live Exports of Sheep from NI into ROI and GB

