



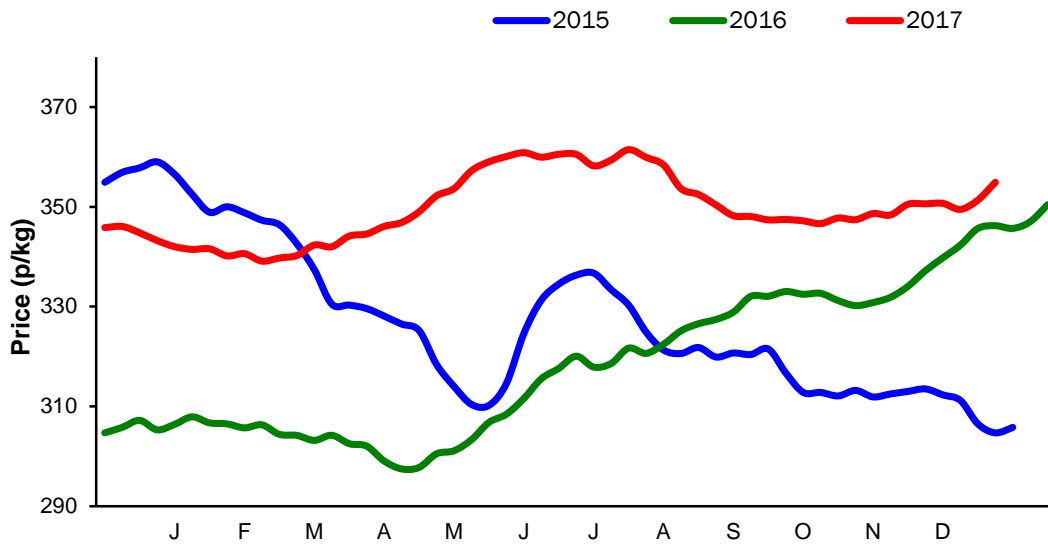
**Monthly Economic Review
December 2017**

Contents

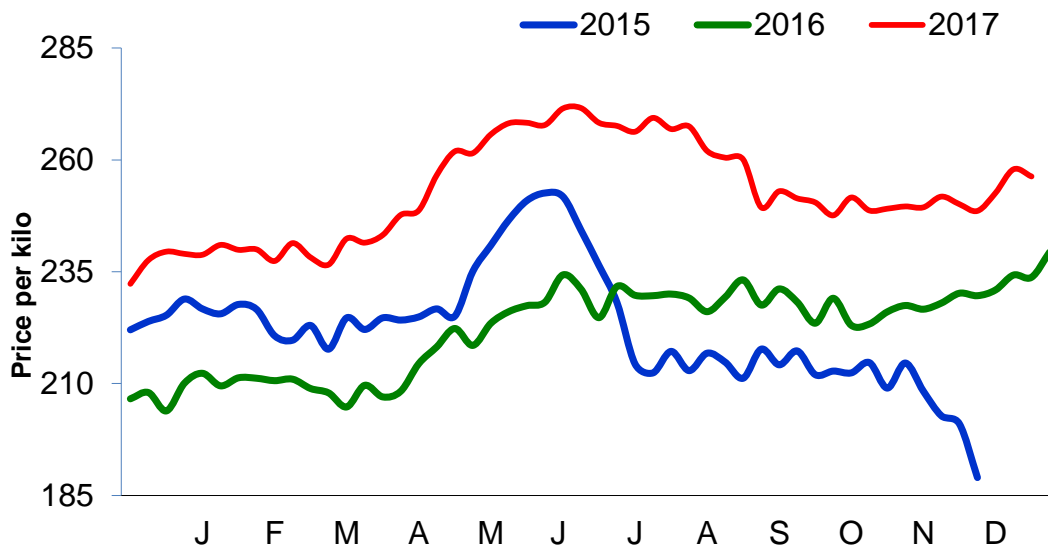
Contents.....	2
Cattle Prices	3
Average NI Clean Cattle Price	3
Average NI Cow Price.....	3
Cattle Slaughtering.....	4
NI Clean Cattle Slaughtering – Cumulative	4
NI Weekly Clean Cattle Slaughtering.....	4
NI Weekly Cow Slaughtering	5
Sheep Prices.....	6
Average NI Lamb / Hogget Price	6
Sheep Slaughtering.....	7
Cumulative Lamb & Hogget Slaughtering	7
Total Weekly Lamb & Hogget Slaughtering	7
Total Weekly Ewe and Ram Slaughtering.....	7
Total Carcase Weight Produced for the Food Chain.....	8
Change in Throughput / Production	9
Supply and Price.....	10
NI Lamb/Hogget Kill vs. Average Lamb / Hogget Price	10
NI Clean Cattle Kill vs. Average Clean Cattle Price.....	10
British Isles Price Comparisons	11
UK Average Cow Prices	11
Weekly UK Cow Prices	11
British Isles R3 Steer Price	12
British Isles R4 Steer Price	12
British Isles Average R3 and R4 Steer price	13
British Isles R3 Heifer Price	14
British Isles R4 Heifer Price	14
British Isles Average R3 and R4 Heifer price.....	15
Exchange Rate £ / Euro	16
Imports.....	17
Monthly Live Imports of Cattle into NI for Direct Slaughter	17
Monthly Live Imports of Sheep into NI for Direct Slaughter	17
Exports	18
Monthly Live Exports of Cattle from NI into RoI and GB.....	18
Monthly live Exports of Sheep from NI into RoI and GB	18

Cattle Prices

Average NI Clean Cattle Price

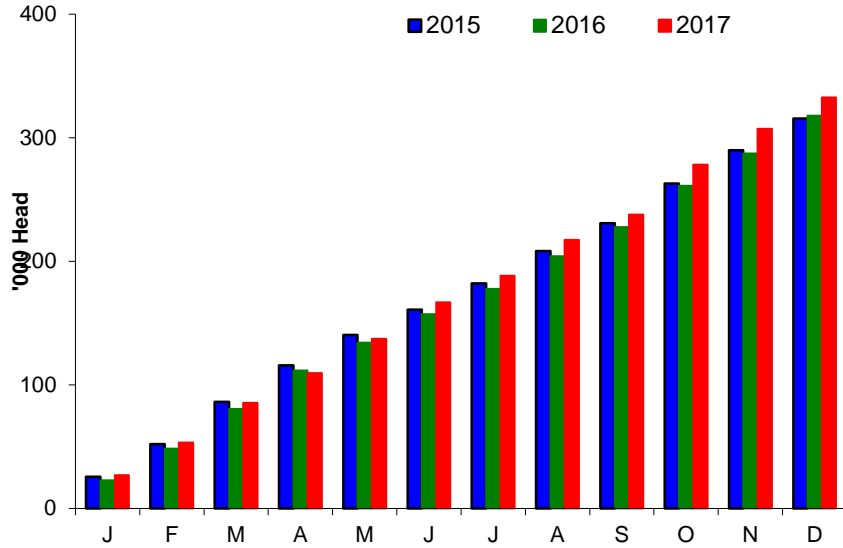


Average NI Cow Price

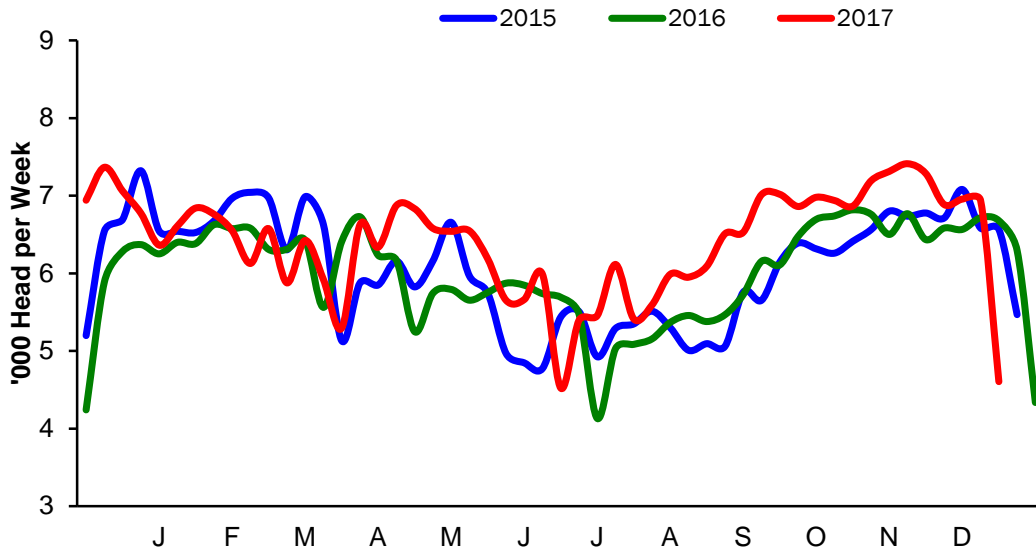


Cattle Slaughtering

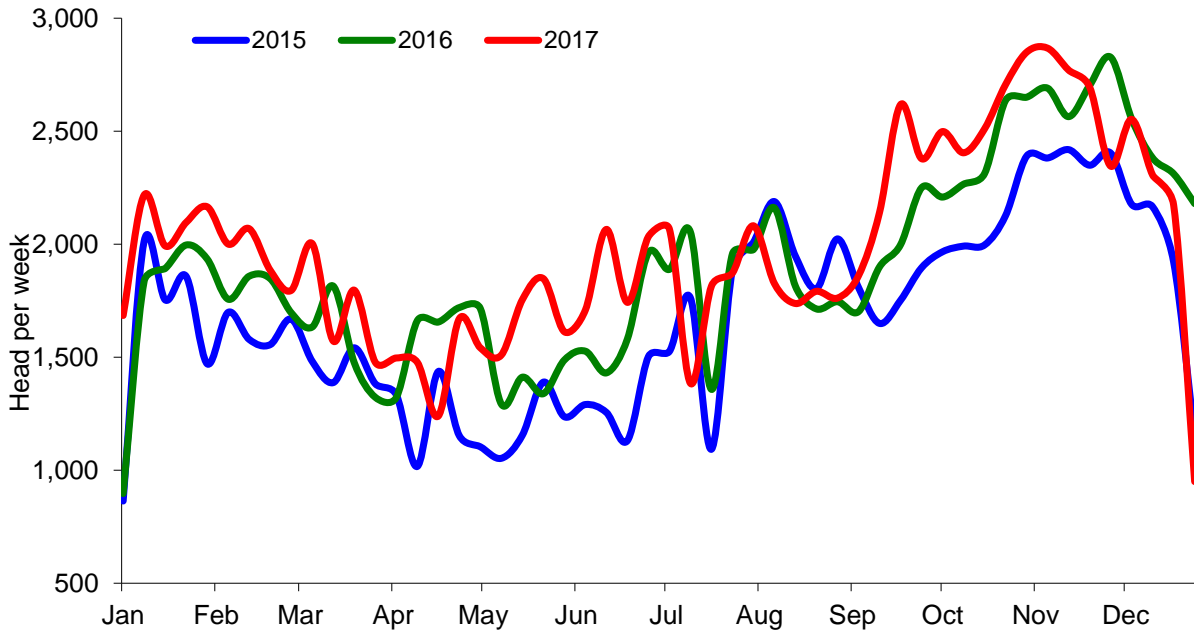
NI Clean Cattle Slaughtering – Cumulative



NI Weekly Clean Cattle Slaughtering

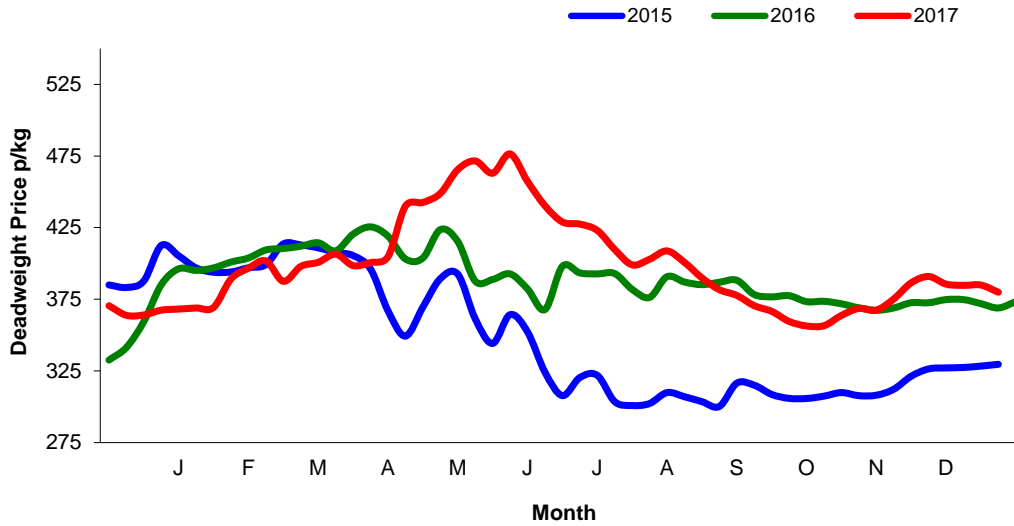


NI Weekly Cow Slaughtering



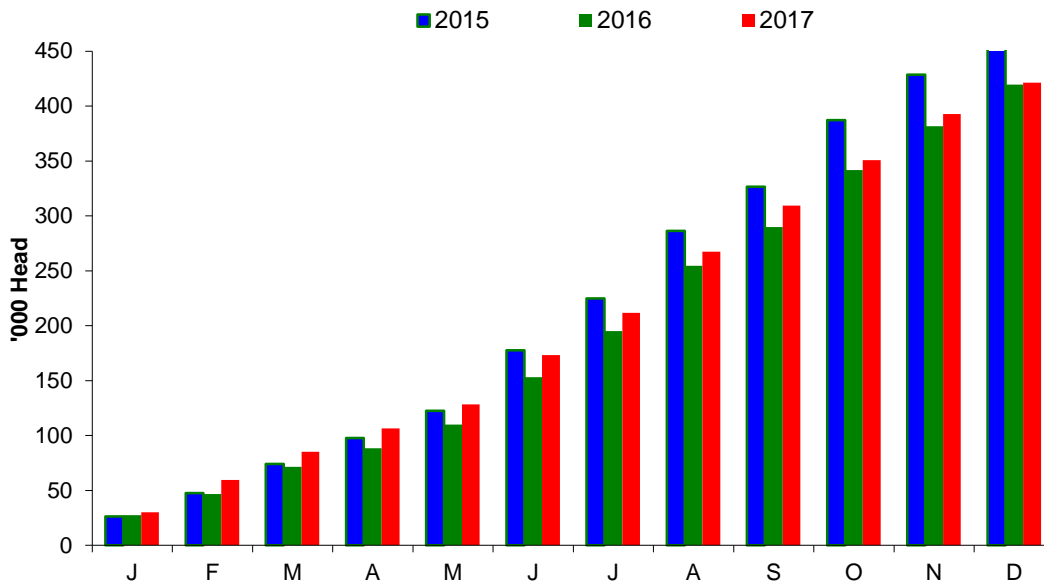
Sheep Prices

Average Deadweight NI Hogget / Lamb Price

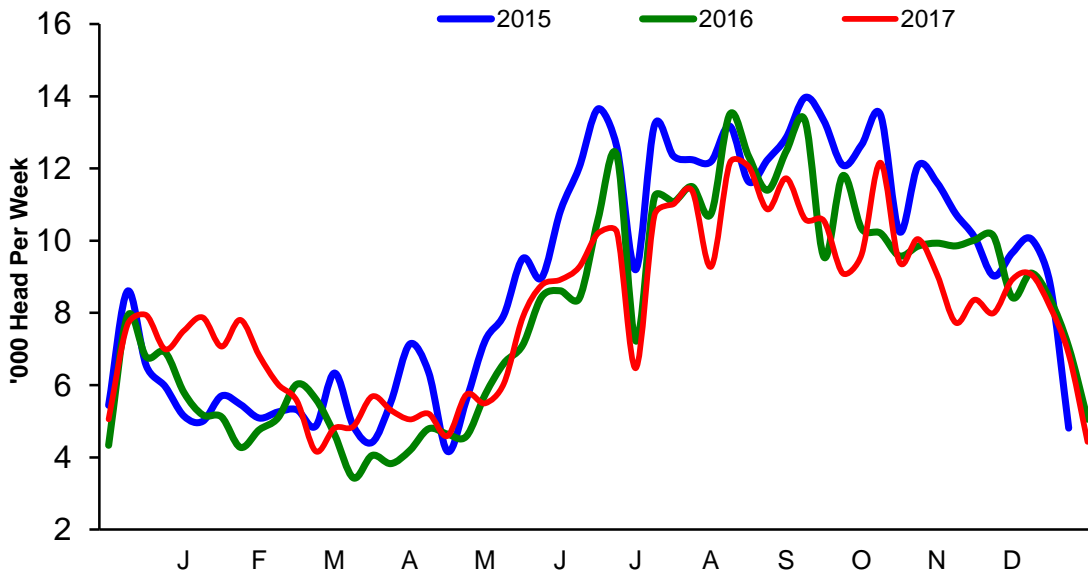


Sheep Slaughterings

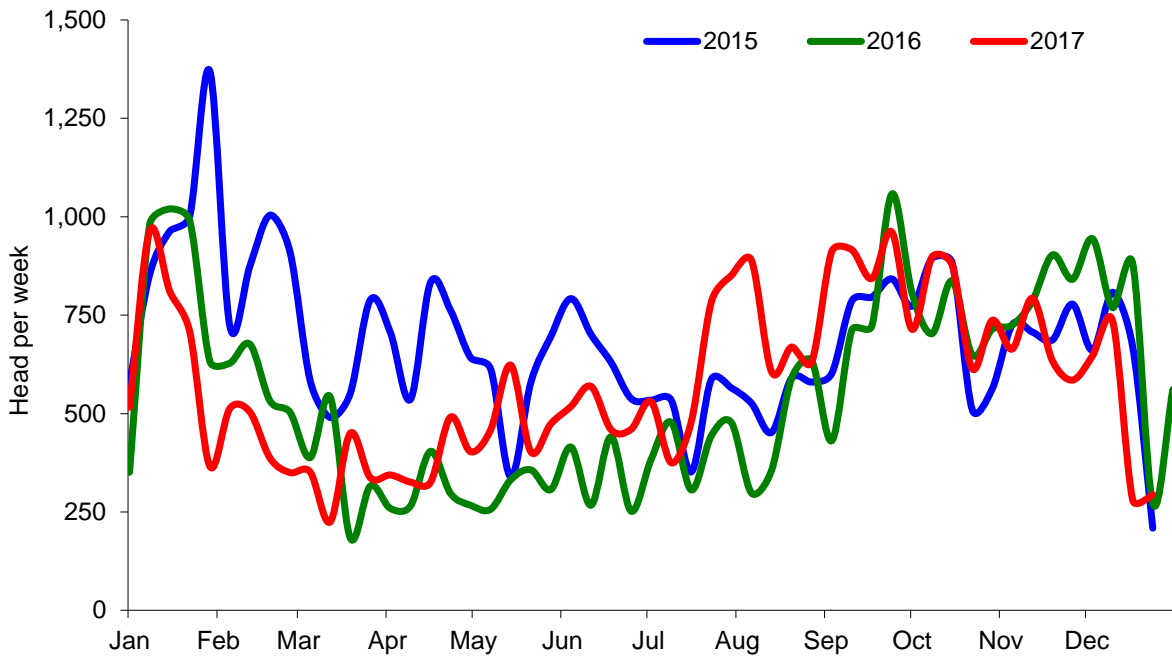
Cumulative Lamb & Hogget Slaughterings



Total Weekly Lamb & Hogget Slaughtering



Total Weekly Ewe and Ram Slaughtering



Market Information December 2017

Page 8

NI CATTLE AND SHEEP SLAUGHTERINGS FOR THE FOODCHAIN						
	December			Year to Date		
	(4 weeks ended 30/12/17)			(52 weeks ended 30/12/17)		
	Dec-16	Dec-17	% Change	2016	2017	Change
CATTLE						
Steers	12,830	12,831	+0%	164,726	170,480	+3%
Heifers	8,980	10,227	+14%	115,363	126,135	+9%
Young Bulls / Calves	2,214	2,328	+5%	37,870	36,100	-5%
Total Prime Cattle	24,024	25,386	+6%	317,959	332,715	+5%
Calves	635	517	-19%	7,540	6,287	-17%
Cows	7,926	7,982	+1%	99,943	103,440	+3%
Mature Bulls	253	205	-19%	4,176	3,670	-12%
Total Cattle	32,838	34,090	+4%	429,618	446,112	+4%
SHEEP						
Lambs & Hoggets	29,602	28,536	-4%	423,896	421,247	-1%
Ewes & Rams	2,483	1,956	-21%	29,145	27,257	-6%
Total Sheep	32,085	30,492	-5%	453,041	448,504	-1%
The above figures are provisional; any amendments will be incorporated in the cumulative data (source DAERA).						

NI BEEF AND SHEEPMEAT PRODUCTION - FOODCHAIN						
	December			Year to Date		
	(4 weeks ended 30/12/17)			(52 weeks ended 30/12/17)		
	Dec-16	Dec-17	% Change	2016	2017	Change
BEEF						
Steers	4,488	4,503	+0%	58,268	59,479	+2%
Heifers	2,849	3,250	+14%	36,711	39,712	+8%
Young Bulls	746	767	+3%	12,532	11,956	-5%
Total Prime Beef	8,083	8,520	+5%	107,511	111,147	+3%
Calves	103	98	-5%	1,547	1,198	-23%
Cows	2,332	2,387	+2%	29,994	30,676	+2%
Mature Bulls	120	95	-21%	1,919	1,666	-13%
Total Beef	10,639	11,100	+4%	140,972	144,688	+3%
SHEEPMEAT						
Lambs & Hoggets	655	620	-5%	9,044	9,118	+1%
Ewes & Rams	67	53	-22%	810	844	+4%
Total Sheepmeat	722	673	-7%	400,514	9,961	-98%
The above figures are provisional; any amendments will be incorporated in the cumulative data (source DAERA).						

Market Information December 2017
Page 9

Total Carcase Weight Produced for the Food Chain
Year-to-Date (tonnes – t.)

Month	Prime Cattle		Cows & Bulls		Lambs/Hoggets		Ewes & Rams	
	2016	2017	2016	2017	2016	2017	2016	2017
January	8,471	9,001	2,489	2,527	599	675	98	82
February	8,906	8,854	2,334	2,581	422	666	61	50
March	10,704	10,578	2,466	2,695	551	582	47	49
April	8,617	8,019	2,188	1,850	367	475	37	45
May	9,529	11,014	2,369	2,670	619	642	50	70
June	7,837	8,027	2,286	2,424	762	773	41	60
July	6,644	7,106	2,407	2,274	868	797	51	61
August	9,014	9,732	2,715	2,726	1,230	1,199	66	103
September	8,248	8,817	2,421	2,614	982	913	92	97
October	9,082	9,359	2,854	2,957	848	867	80	81
November	10,922	12,120	3,863	3,887	1,046	905	111	93
December	8,083	8,520	2,332	2,387	655	620	67	53
Total	106,058	111,147	30,723	31,593	8,947	9,115	801	844
Change (t.)	5,089		870		168		43	
% Change	4.80%		2.83%		1.88%		5.38%	

**excludes calves*

Change in Throughput / Production

Last 4 weeks 2016/2017

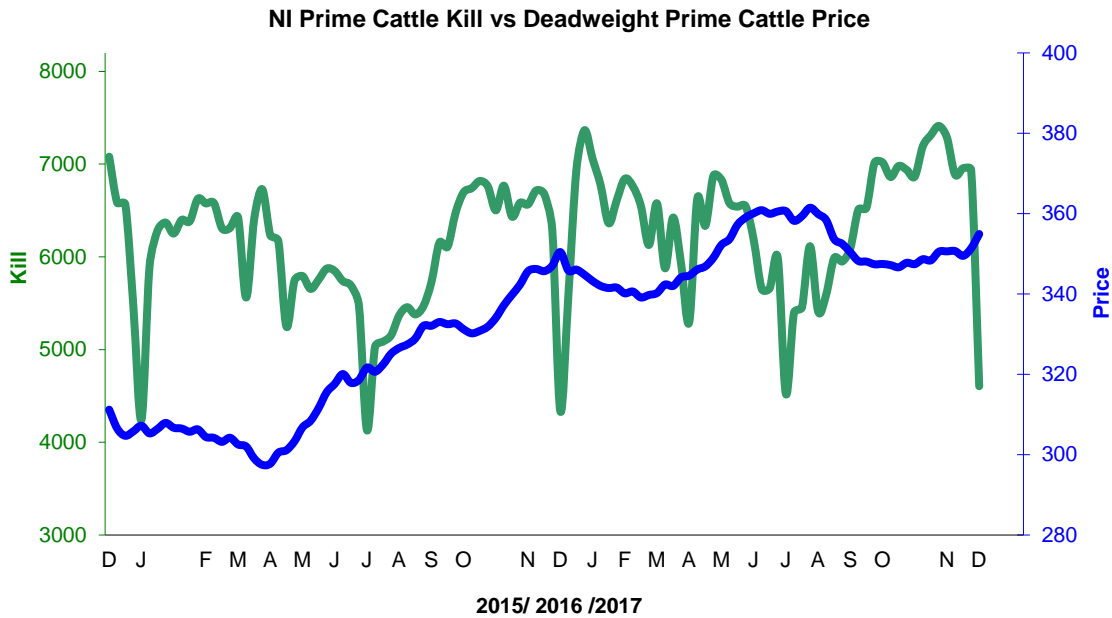
Change in Throughput / Production 2016/2017

December

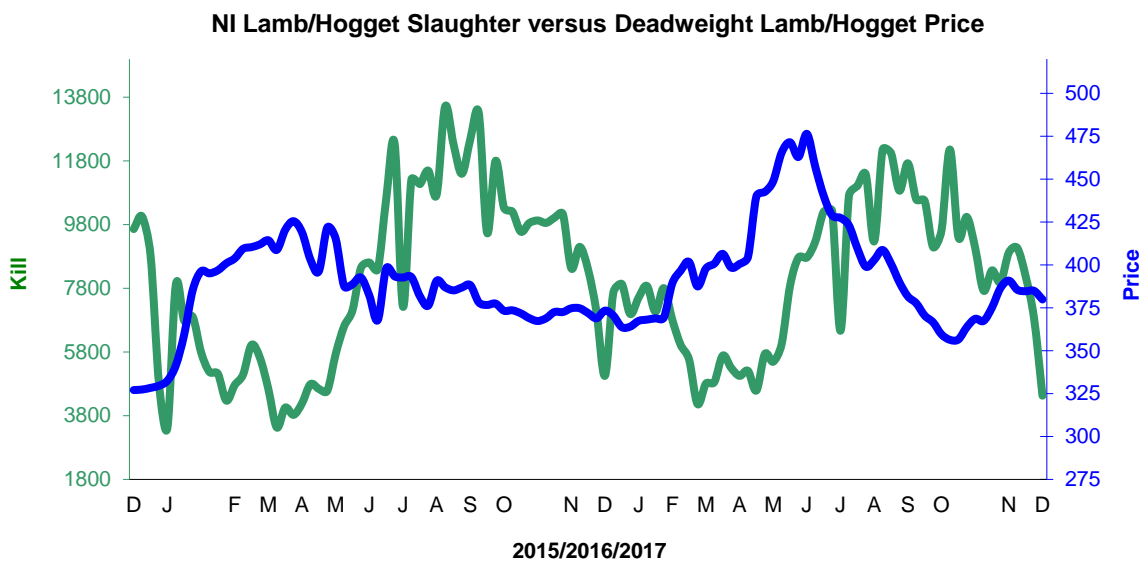
2016/2017	Number	Tonnage	ACW Kg
Prime	5.7%	5.4%	-1.42
Cows	0.7%	2.3%	8.83
Total	3.8%	4.3%	0.92
Lamb	-3.6%	-5.3%	-0.40
Ewes and Rams	-21.2%	-21.7%	0.29
Total Sheep	-5.0%	-6.8%	-0.43

Supply and Price

NI Clean Cattle Kill vs. Average Clean Cattle Price



NI Lamb/Hogget Kill vs. Average Lamb / Hogget Price

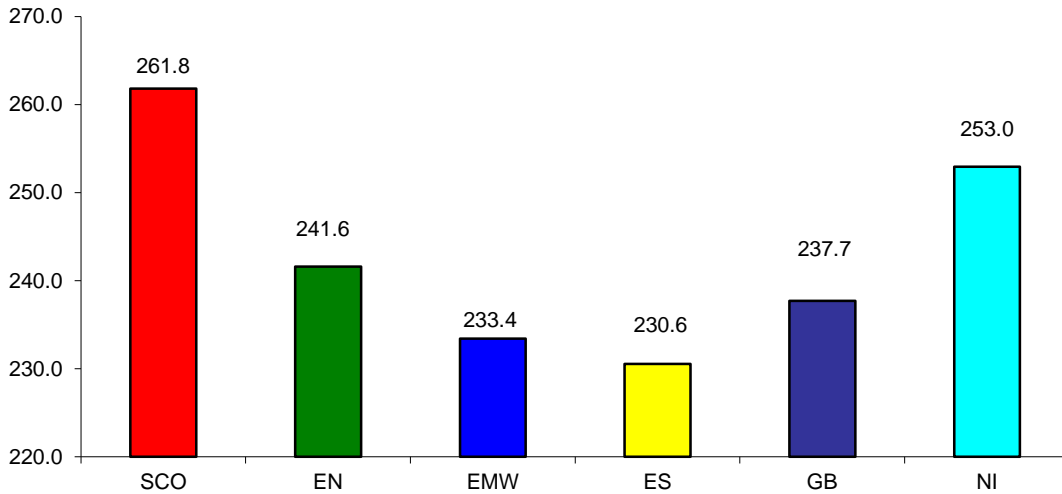


Green	Supply (Kill)
Blue	Price

BRITISH ISLES COMPARISONS

UK Average Cow Prices

52 Weeks to 31 December 2017

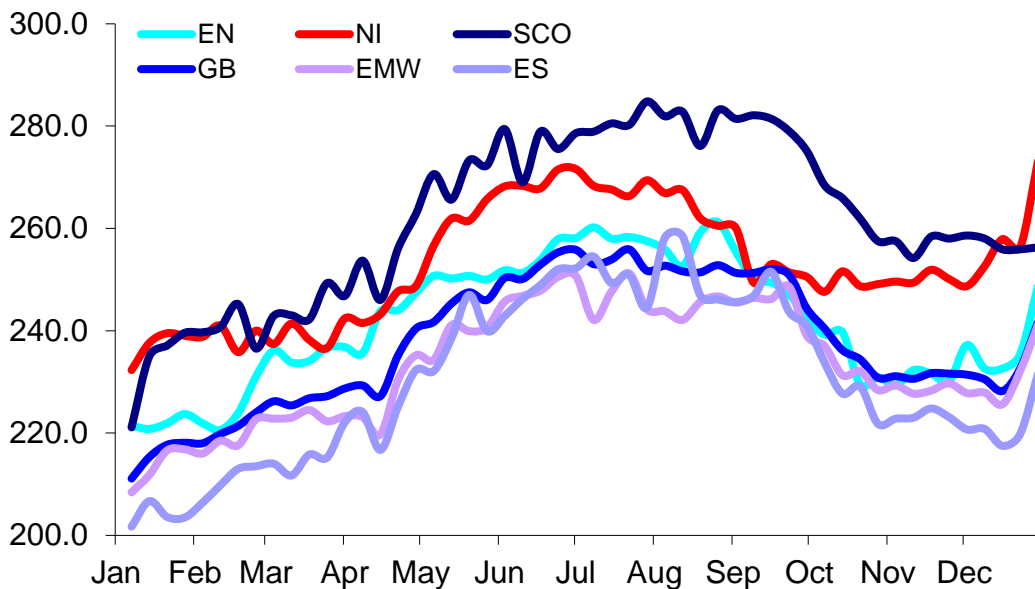


SCO	Scotland
EN	England North
EMW	England Midlands and Wales
ES	England South
NI	Northern Ireland
GB	Great Britain

Prices relate to UK Dressing Specification

Weekly UK Cow Prices

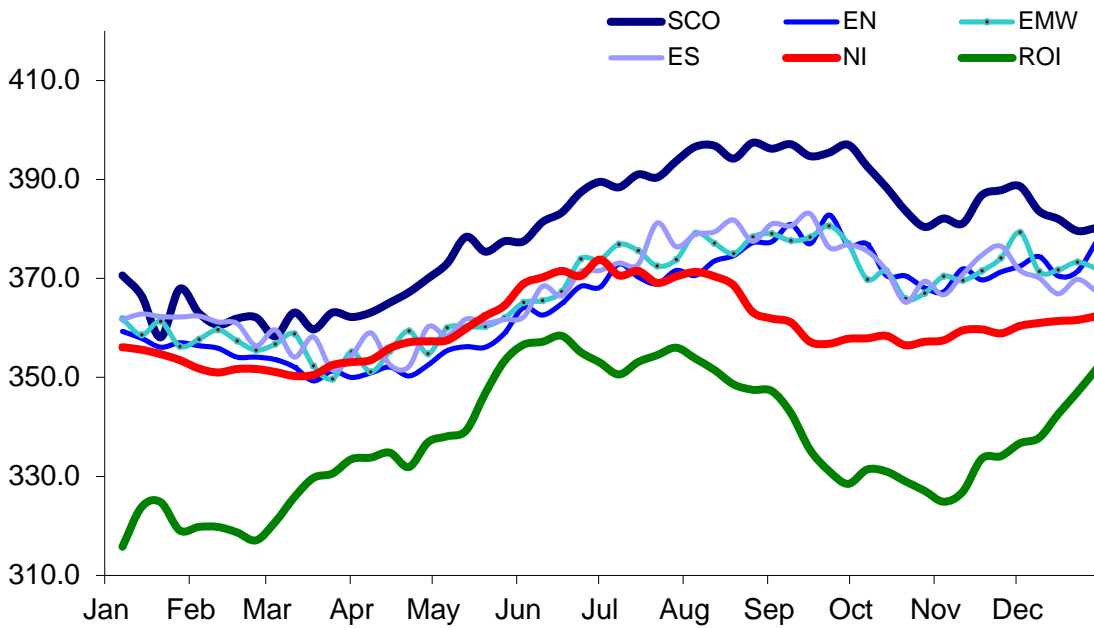
52 Weeks to 31 December 2017



Prices relate to UK Dressing Specification

British Isles R3 Steer Price

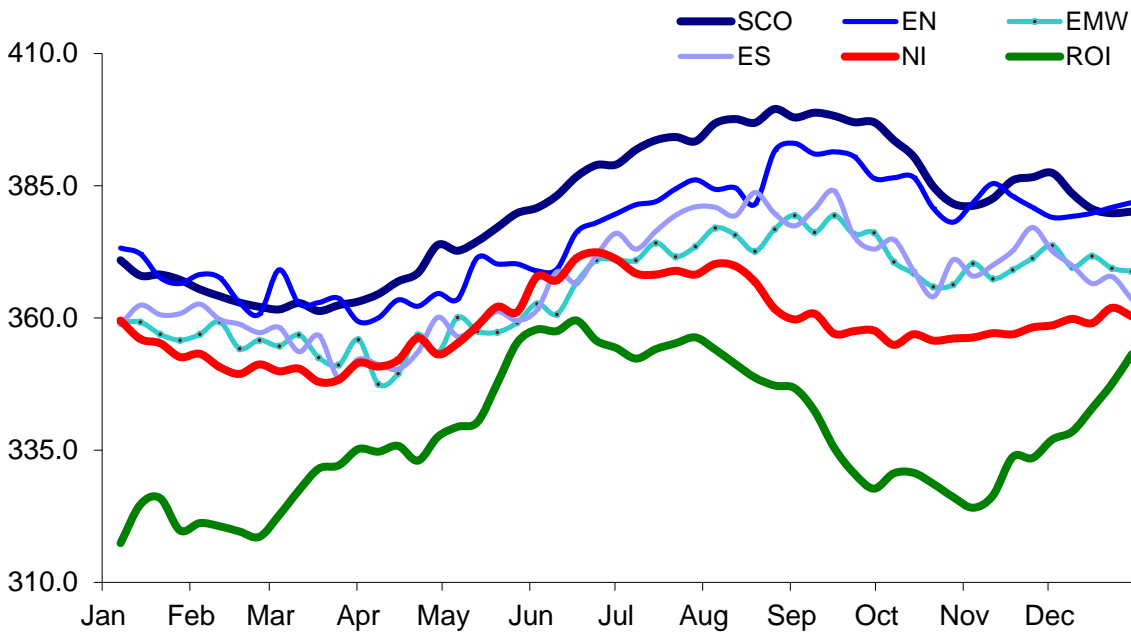
52 Weeks to 31 December 2017



Prices relate to UK Dressing Specification

British Isles R4 Steer Price

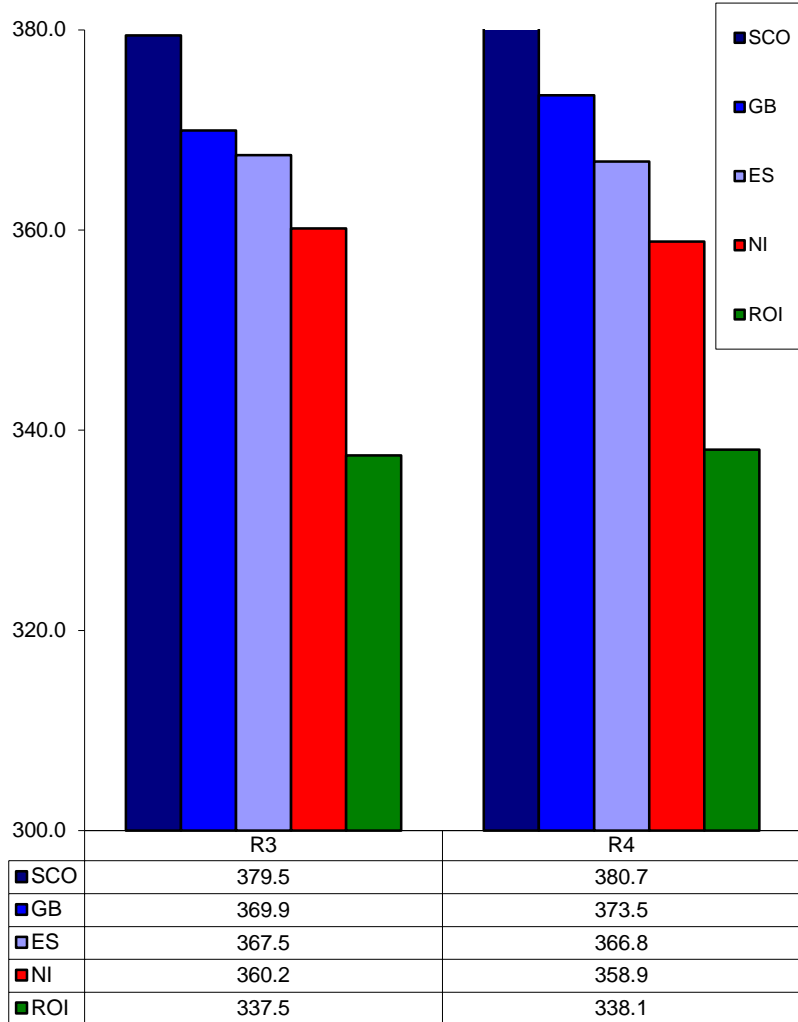
52 Weeks to 31 December 2017



Prices relate to UK Dressing Specification

British Isles Average R3 and R4 Steer price

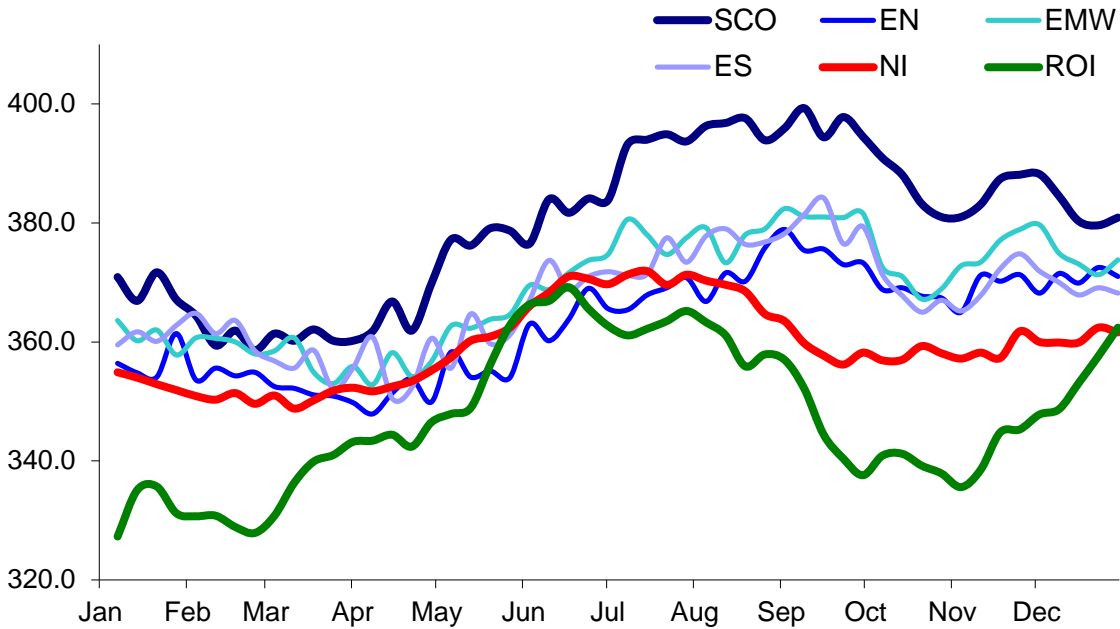
52 Weeks to 31 December 2017



Prices relate to UK Dressing Specification

British Isles R3 Heifer Price

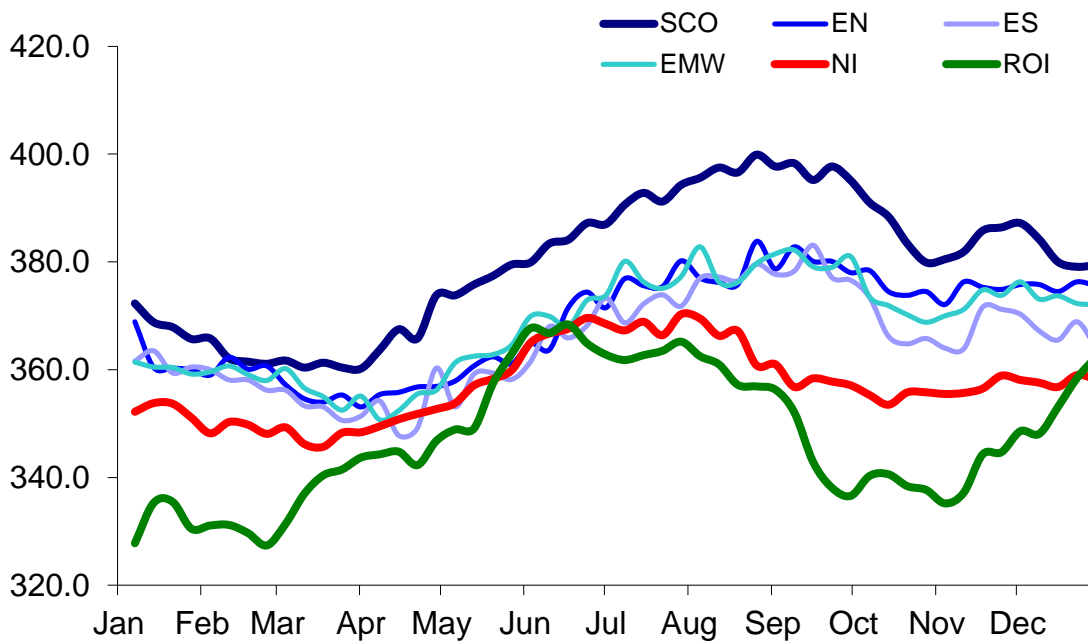
52 Weeks to 31 December 2017



Prices relate to UK Dressing Specification

British Isles R4 Heifer Price

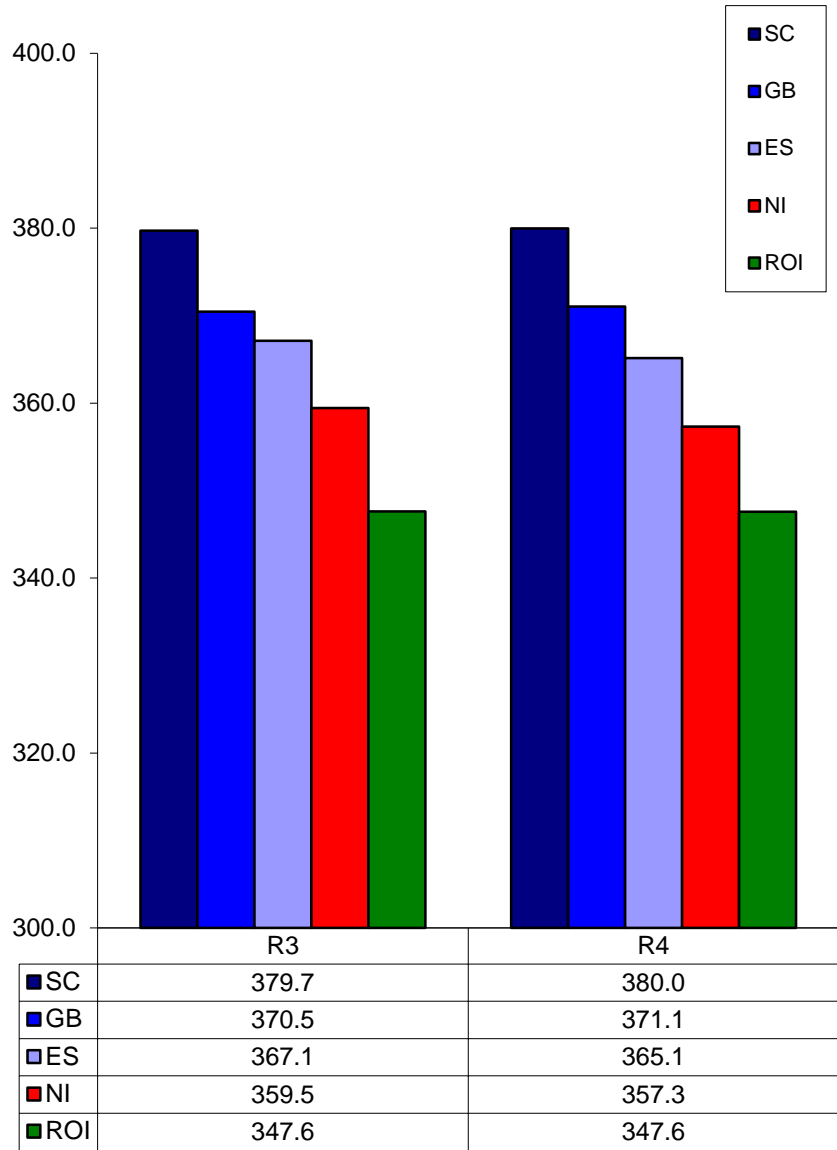
52 Weeks to 31 December 2017



Prices relate to UK Dressing Specification

British Isles Average R3 and R4 Heifer price

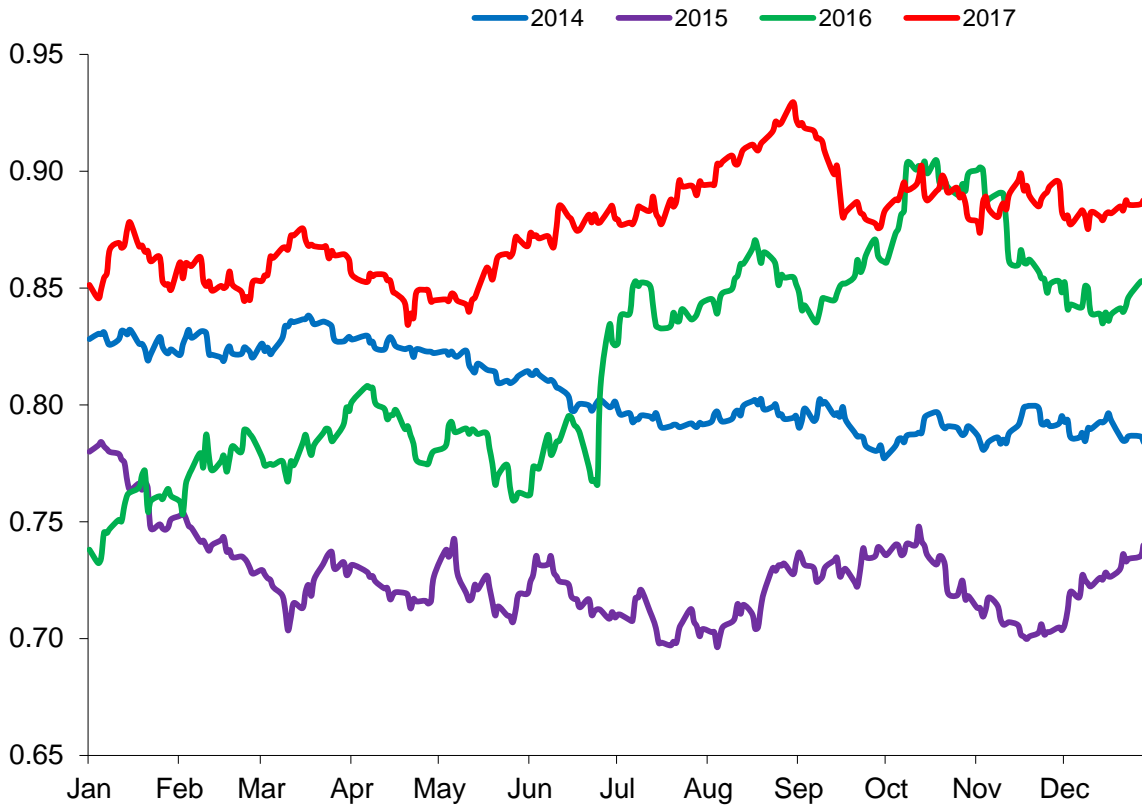
52 Weeks to 31 December 2017



Prices relate to UK Dressing Specification

Exchange Rate £ / Euro

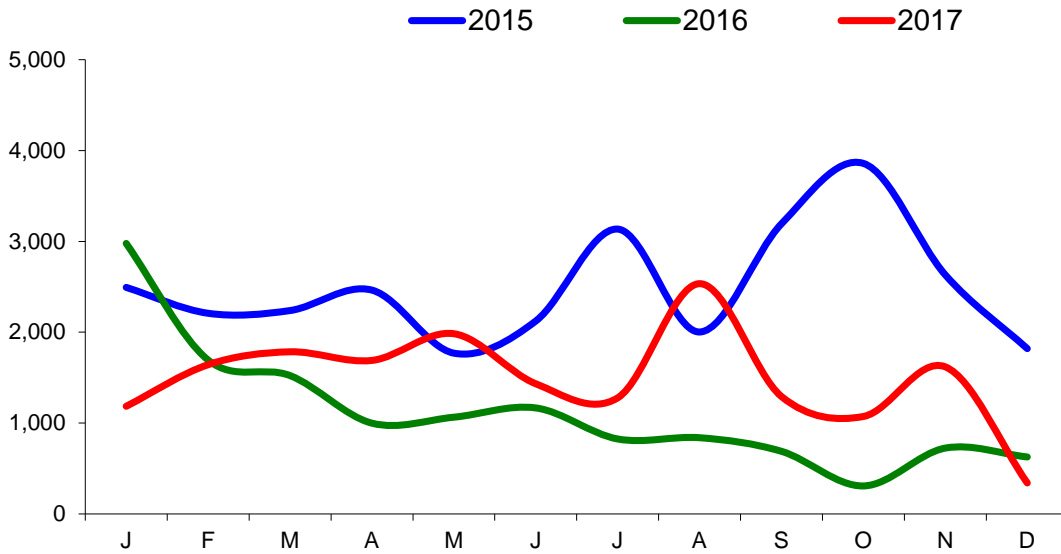
01 January 2014 –31 December 2017



Imports

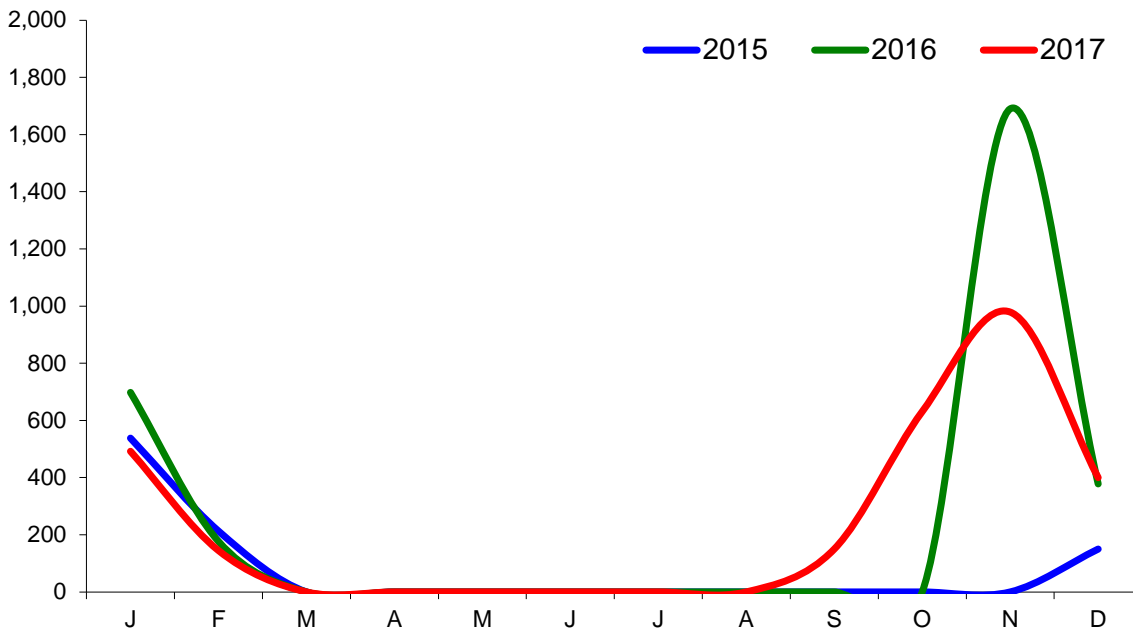
Monthly Live Imports of Cattle into NI for Direct Slaughter

From ROI and GB Combined



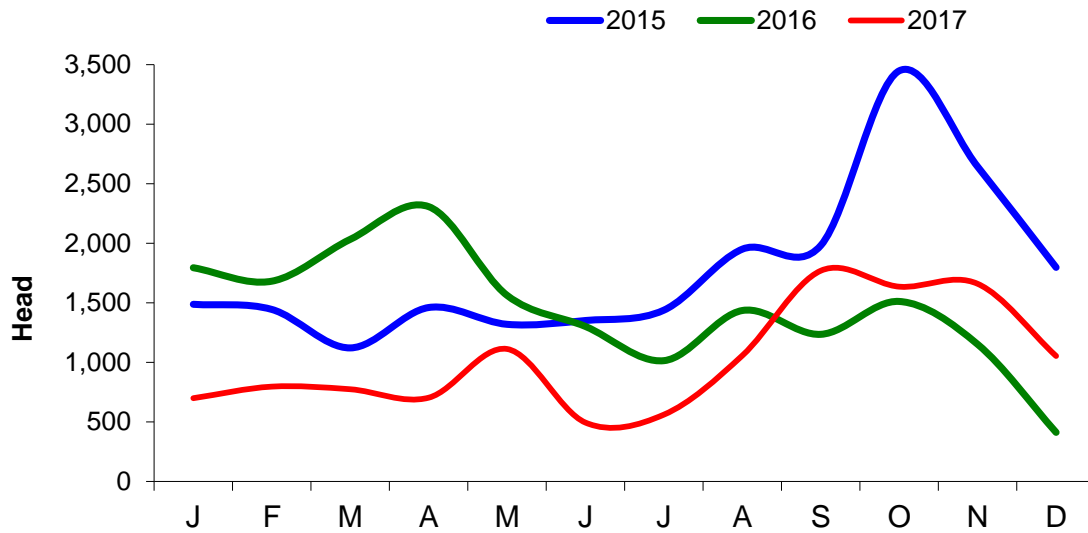
Monthly Live Imports of Sheep into NI for Direct Slaughter

From ROI and GB Combined



Exports

Monthly Live Exports of Cattle from NI into ROI and GB



Monthly Live Exports of Sheep from NI into ROI and GB

