



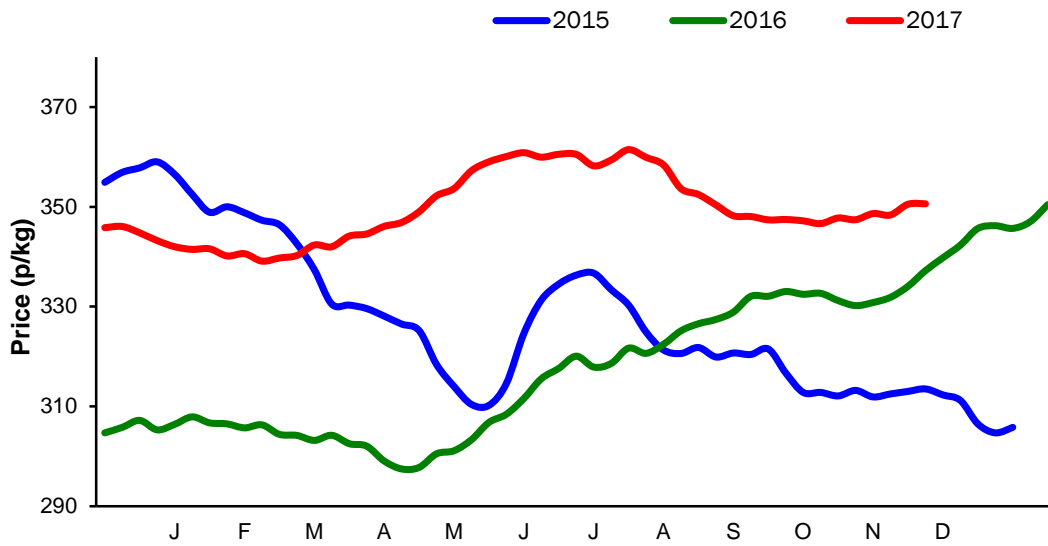
**Monthly Economic Review
November 2017**

Contents

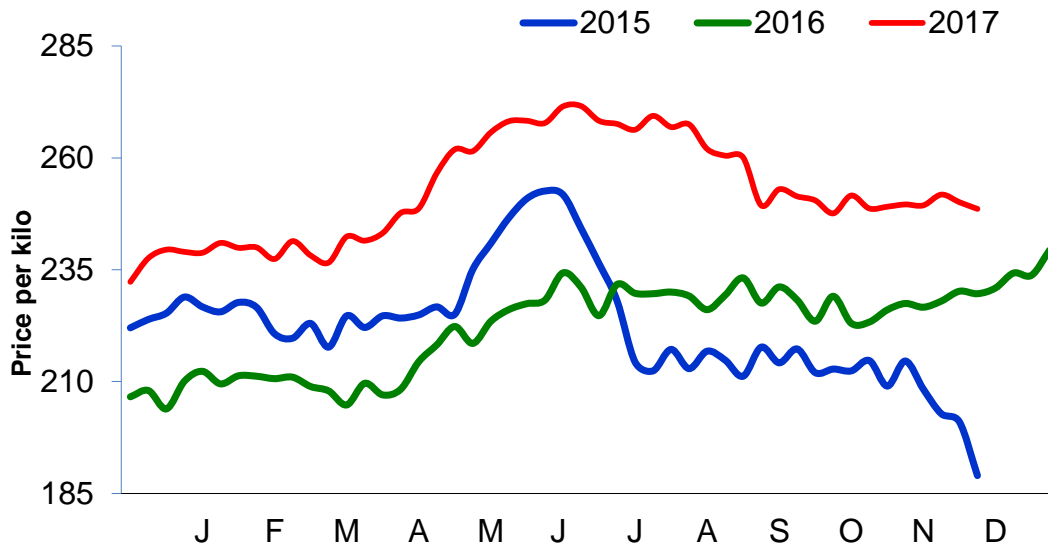
Contents.....	2
Cattle Prices	3
Average NI Clean Cattle Price	3
Average NI Cow Price.....	3
Cattle Slaughtering.....	4
NI Clean Cattle Slaughtering – Cumulative	4
NI Weekly Clean Cattle Slaughtering.....	4
NI Weekly Cow Slaughtering	5
Sheep Prices.....	6
Average NI Lamb / Hogget Price	6
Sheep Slaughtering.....	7
Cumulative Lamb & Hogget Slaughtering	7
Total Weekly Lamb & Hogget Slaughtering	7
Total Weekly Ewe and Ram Slaughtering.....	7
Total Carcase Weight Produced for the Food Chain.....	8
Change in Throughput / Production	9
Supply and Price.....	10
NI Lamb/Hogget Kill vs. Average Lamb / Hogget Price	10
NI Clean Cattle Kill vs. Average Clean Cattle Price.....	10
British Isles Price Comparisons	11
UK Average Cow Prices	11
Weekly UK Cow Prices	11
British Isles R3 Steer Price	12
British Isles R4 Steer Price	12
British Isles Average R3 and R4 Steer price	13
British Isles R3 Heifer Price	14
British Isles R4 Heifer Price	14
British Isles Average R3 and R4 Heifer price.....	15
Exchange Rate £ / Euro	16
Imports.....	17
Monthly Live Imports of Cattle into NI for Direct Slaughter	17
Monthly Live Imports of Sheep into NI for Direct Slaughter	17
Exports	18
Monthly Live Exports of Cattle from NI into RoI and GB.....	18
Monthly live Exports of Sheep from NI into RoI and GB	18

Cattle Prices

Average NI Clean Cattle Price

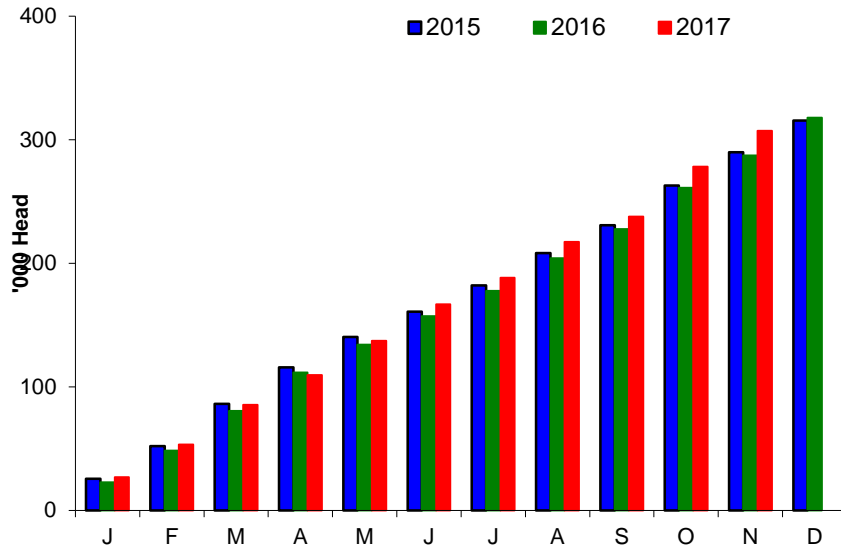


Average NI Cow Price

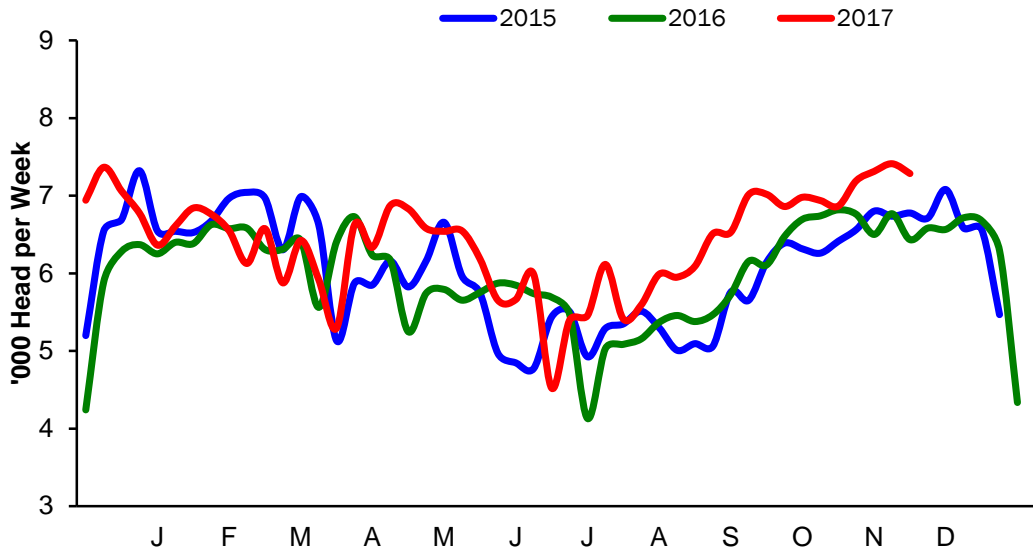


Cattle Slaughtering

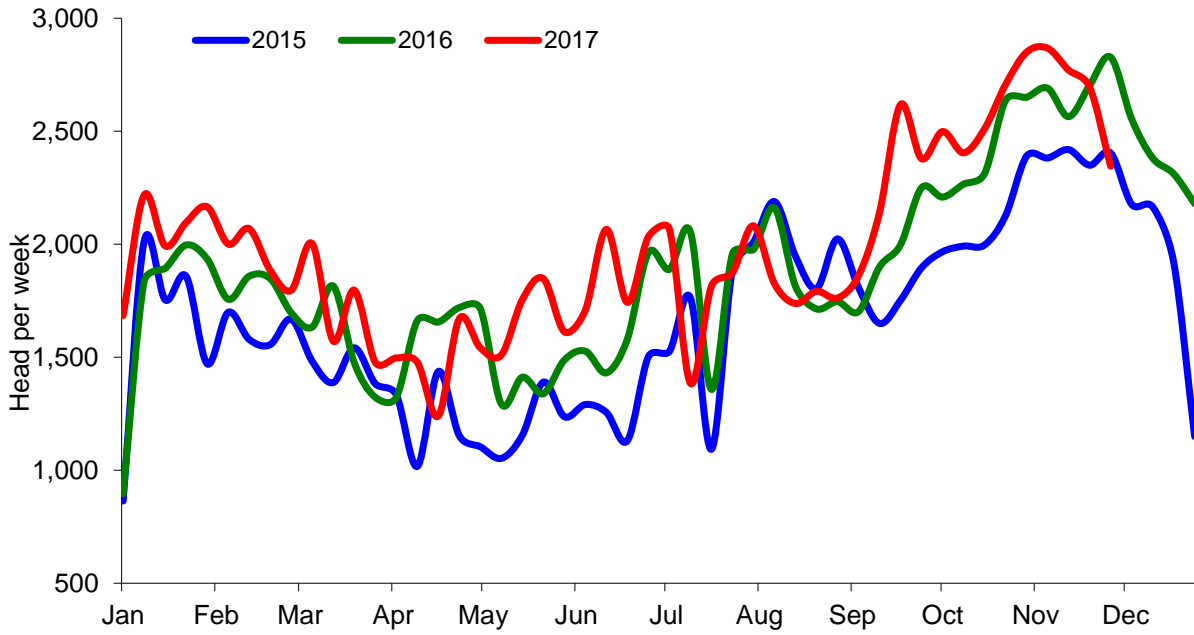
NI Clean Cattle Slaughtering – Cumulative



NI Weekly Clean Cattle Slaughtering

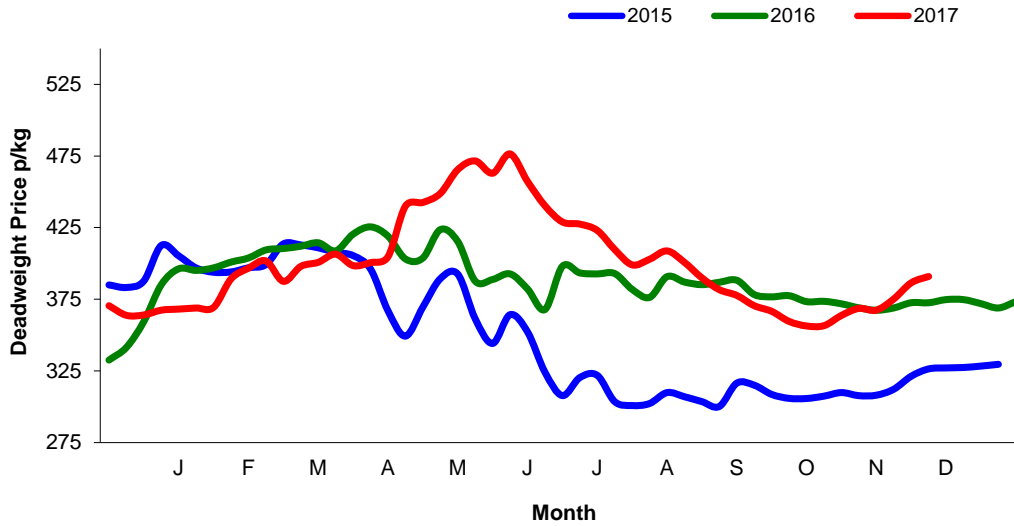


NI Weekly Cow Slaughtering



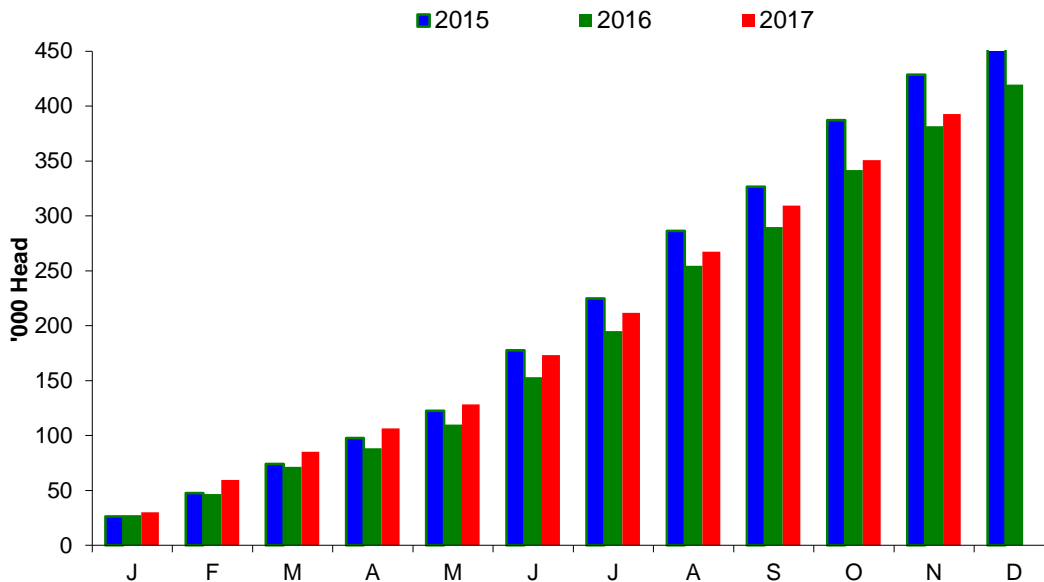
Sheep Prices

Average Deadweight NI Hogget / Lamb Price

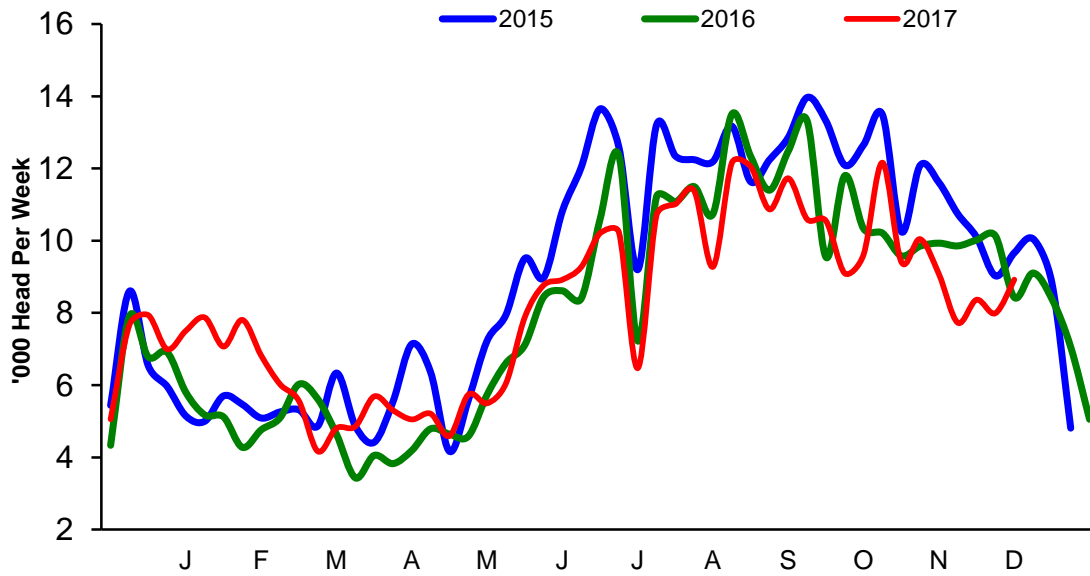


Sheep Slaughterings

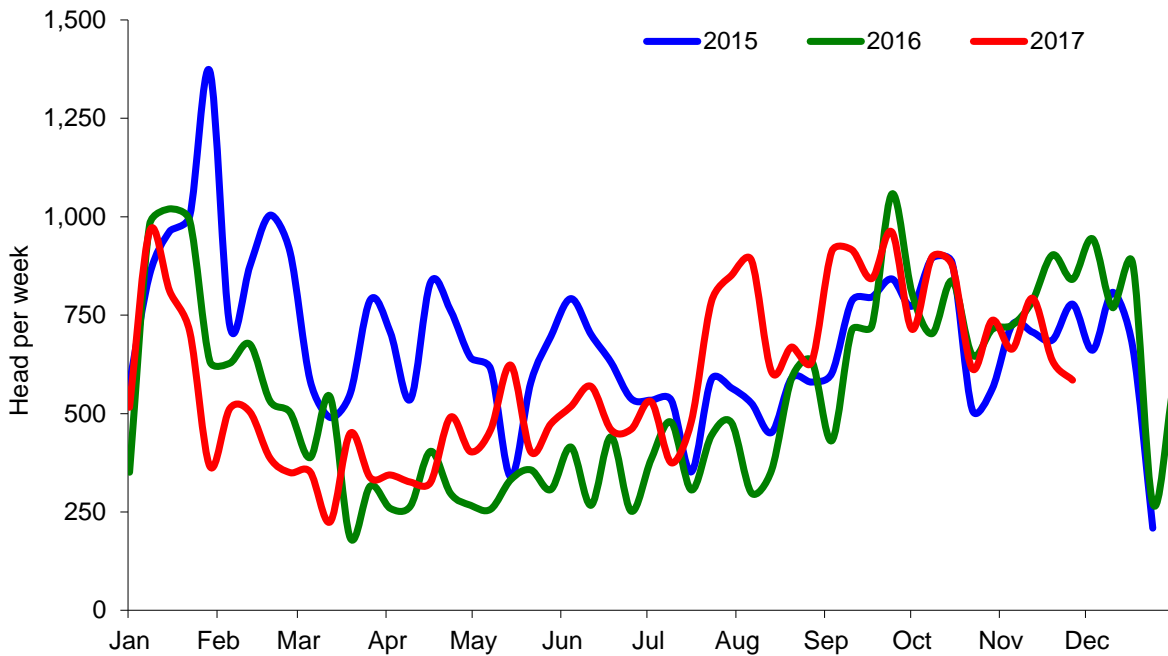
Cumulative Lamb & Hogget Slaughterings



Total Weekly Lamb & Hogget Slaughtering



Total Weekly Ewe and Ram Slaughtering



Market Information November 2017
Page 8

NI CATTLE AND SHEEP SLAUGHTERINGS FOR THE FOODCHAIN						
	November			Year to Date		
	(5 weeks ended 02/12/17)			(35 weeks ended 02/12/17)		
	Nov-16	Nov-17	% Change	2016	2017	Change
CATTLE						
Steers	17,345	19,139	+10%	107,834	113,918	+6%
Heifers	12,464	14,044	+13%	73,851	81,967	+11%
Young Bulls / Calves	3,013	2,885	-4%	26,048	26,014	-0%
Total Prime Cattle	32,822	36,068	+10%	207,733	221,899	+7%
Calves	845	772	-9%	5,088	4,043	-21%
Cows	13,342	13,531	+1%	68,727	70,698	+3%
Mature Bulls	467	380	-19%	3,047	2,630	-14%
Total Cattle	47,476	50,751	+7%	284,595	299,270	+5%
SHEEP						
Lambs & Hoggets	48,369	42,081	-13%	318,426	307,608	-3%
Ewes & Rams	4,199	3,413	-19%	18,660	21,817	+17%
Total Sheep	52,568	45,494	-13%	337,086	329,425	-2%

The above figures are provisional; any amendments will be incorporated in the cumulative data (source DAERA).

NI BEEF AND SHEEPMEAT PRODUCTION - FOODCHAIN						
	November			Year to Date		
	(5 weeks ended 02/12/17)			(35 weeks ended 02/12/17)		
	Nov-16	Nov-17	% Change	2016	2017	Change
BEEF						
Steers	6,032	6,678	+11%	37,982	39,696	+5%
Heifers	3,918	4,467	+14%	23,331	25,791	+11%
Young Bulls	972	974	+0%	8,580	8,706	+1%
Total Prime Beef	10,922	12,120	+11%	69,893	74,194	+6%
Calves	172	149	-13%	1,069	761	-29%
Cows	3,863	3,887	+1%	20,486	20,877	+2%
Mature Bulls	221	174	-21%	1,403	1,180	-16%
Total Beef	15,178	16,329	+8%	92,853	97,012	+4%
SHEEPMEAT						
Lambs & Hoggets	1,046	905	-13%	6,721	6,574	-2%
Ewes & Rams	111	93	-16%	528	610	+16%
Total Sheepmeat	1,156	998	-14%	264,334	7,184	-97%

The above figures are provisional; any amendments will be incorporated in the cumulative data (source DAERA).

Market Information November 2017
Page 9

Total Carcase Weight Produced for the Food Chain
Year-to-Date (tonnes – t.)

Month	Prime Cattle		Cows & Bulls		Lambs/Hoggets		Ewes & Rams	
	2016	2017	2016	2017	2016	2017	2016	2017
January	8,471	9,001	2,489	2,527	599	675	98	82
February	8,906	8,854	2,334	2,581	422	666	61	50
March	10,704	10,578	2,466	2,695	551	582	47	49
April	8,617	8,019	2,188	1,850	367	475	37	45
May	9,529	11,014	2,369	2,670	619	642	50	70
June	7,837	8,027	2,286	2,424	762	773	41	60
July	6,644	7,106	2,407	2,274	868	797	51	61
August	9,014	9,732	2,715	2,726	1,230	1,199	66	103
September	8,248	8,817	2,421	2,614	982	913	92	97
October	9,082	9,359	2,854	2,957	848	867	80	81
November	10,922	12,120	3,863	3,887	1,046	905	111	93
December								
Total	97,975	102,627	28,391	29,206	8,292	8,495	733	791
Change (t.)	4,653		815		203		58	
% Change	4.75%		2.87%		2.44%		7.87%	

*excludes calves

Change in Throughput / Production

Last 4 weeks 2016/2017

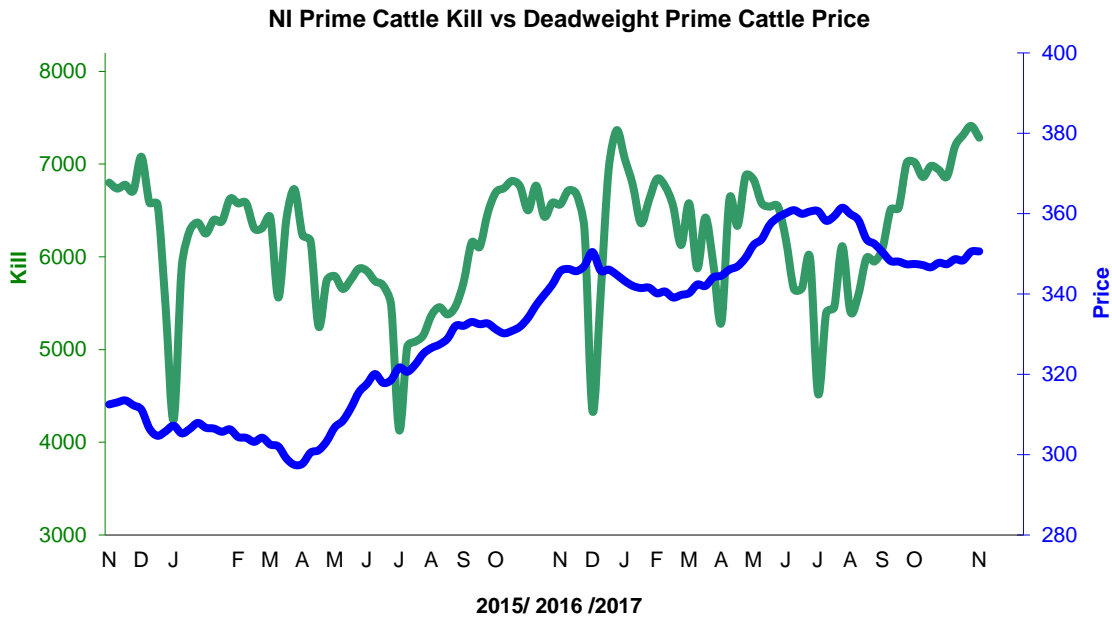
Change in Throughput / Production 2016/2017

November

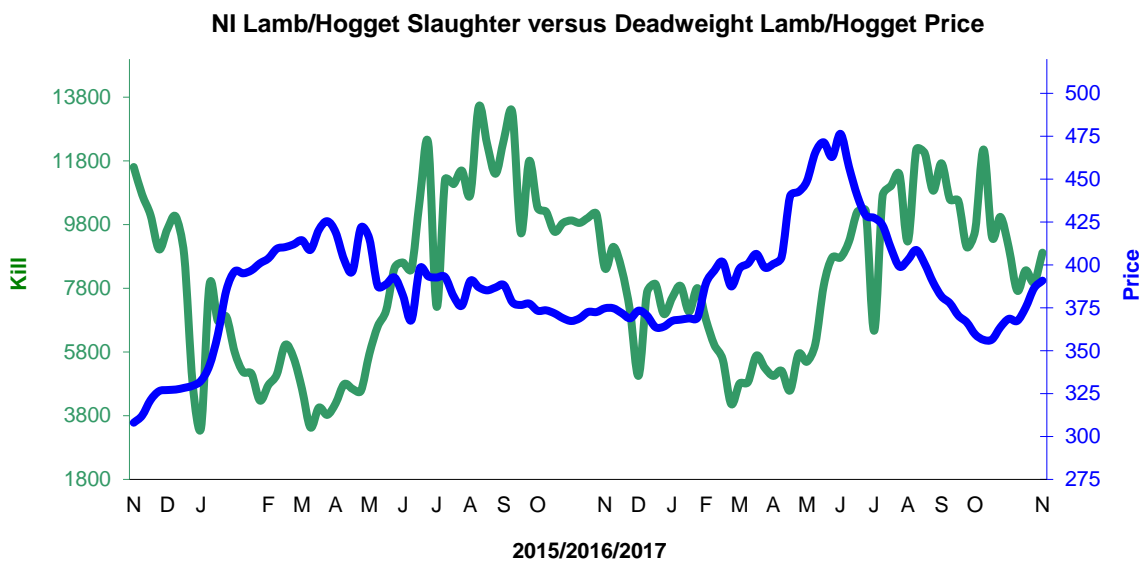
2016/2017	Number	Tonnage	ACW Kg
Prime	9.9%	11.0%	3.12
Cows	1.4%	0.6%	-2.40
Total	6.9%	7.6%	1.92
Lamb	-13.0%	-13.5%	-0.12
Ewes and Rams	-18.7%	-15.8%	1.00
Total Sheep	-13.5%	-13.7%	-0.06

Supply and Price

NI Clean Cattle Kill vs. Average Clean Cattle Price



NI Lamb/Hogget Kill vs. Average Lamb / Hogget Price

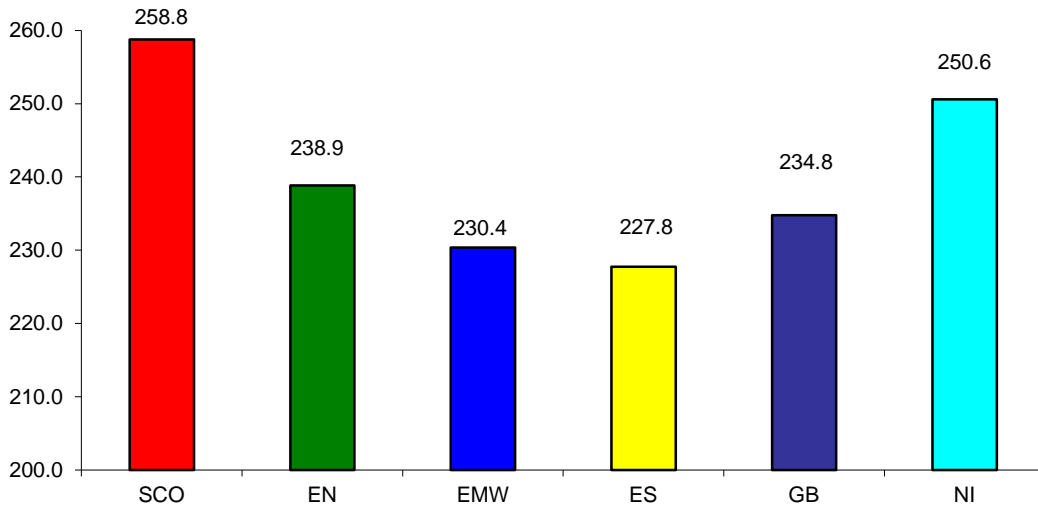


Green	Supply (Kill)
Blue	Price

BRITISH ISLES COMPARISONS

UK Average Cow Prices

52 Weeks to 02 December 2017

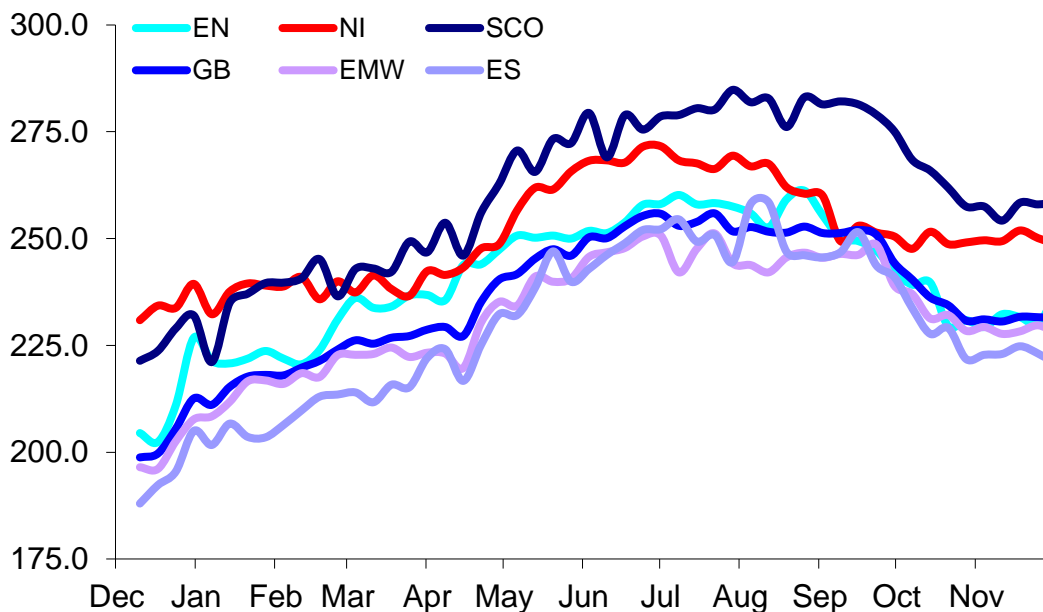


SCO	Scotland
EN	England North
EMW	England Midlands and Wales
ES	England South
NI	Northern Ireland
GB	Great Britain

Prices relate to UK Dressing Specification

Weekly UK Cow Prices

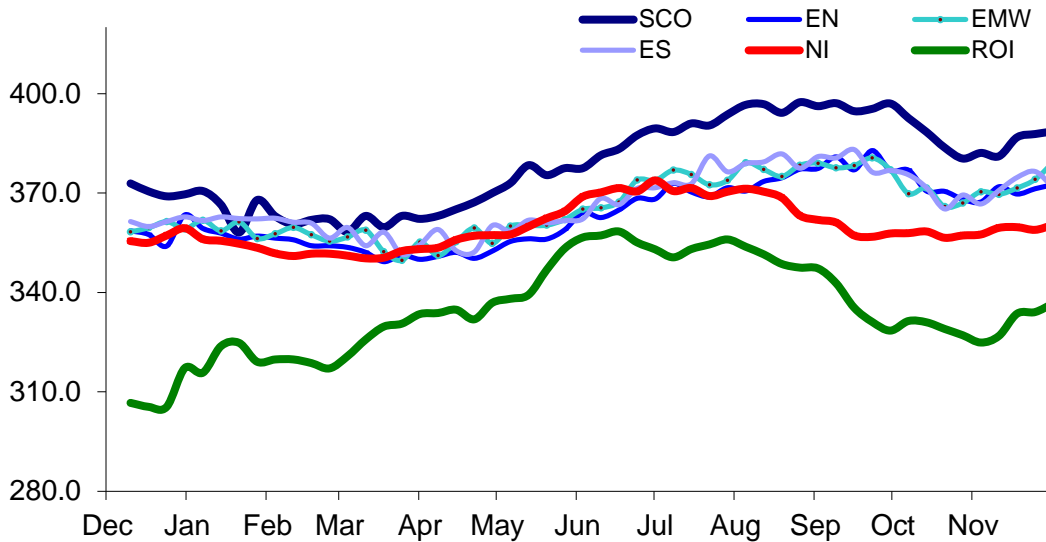
52 Weeks to 02 December 2017



Prices relate to UK Dressing Specification

British Isles R3 Steer Price

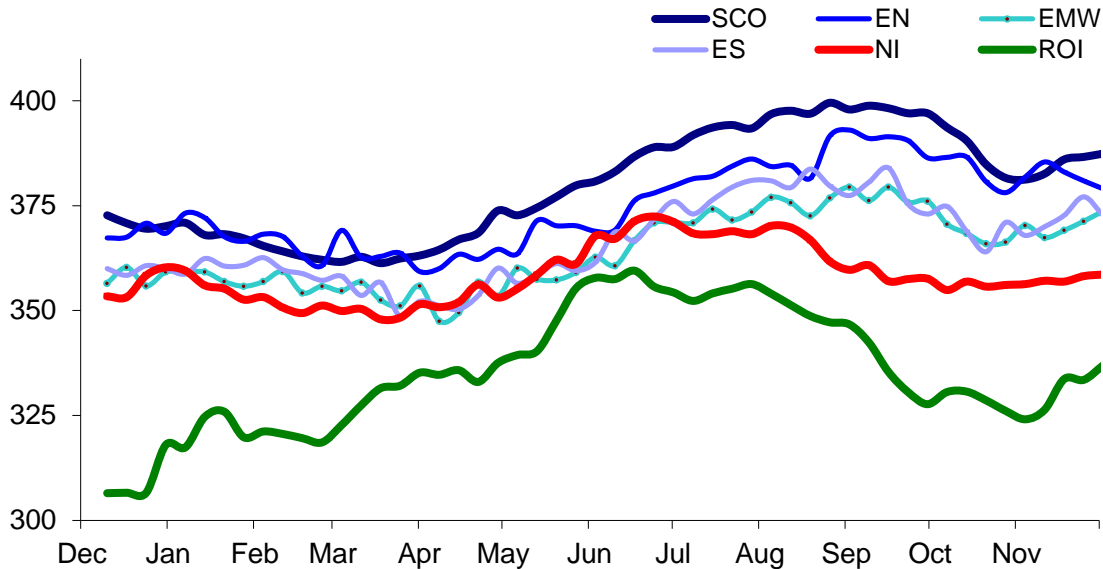
52 Weeks to 02 December 2017



Prices relate to UK Dressing Specification

British Isles R4 Steer Price

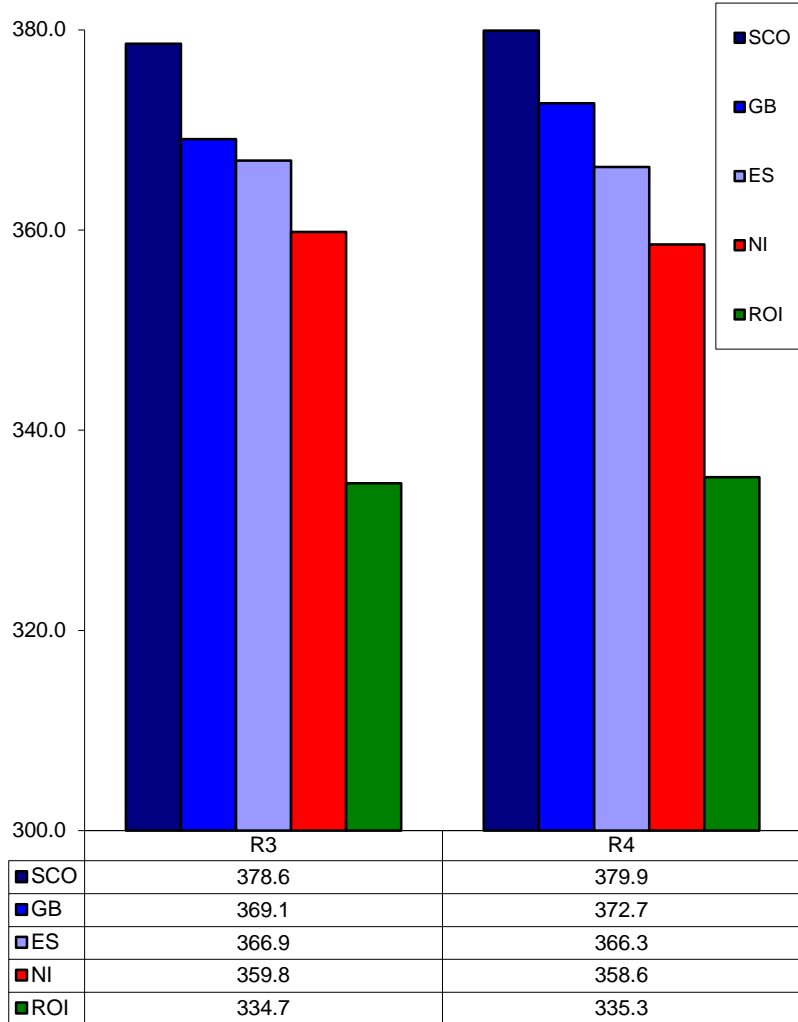
52 Weeks to 02 December 2017



Prices relate to UK Dressing Specification

British Isles Average R3 and R4 Steer price

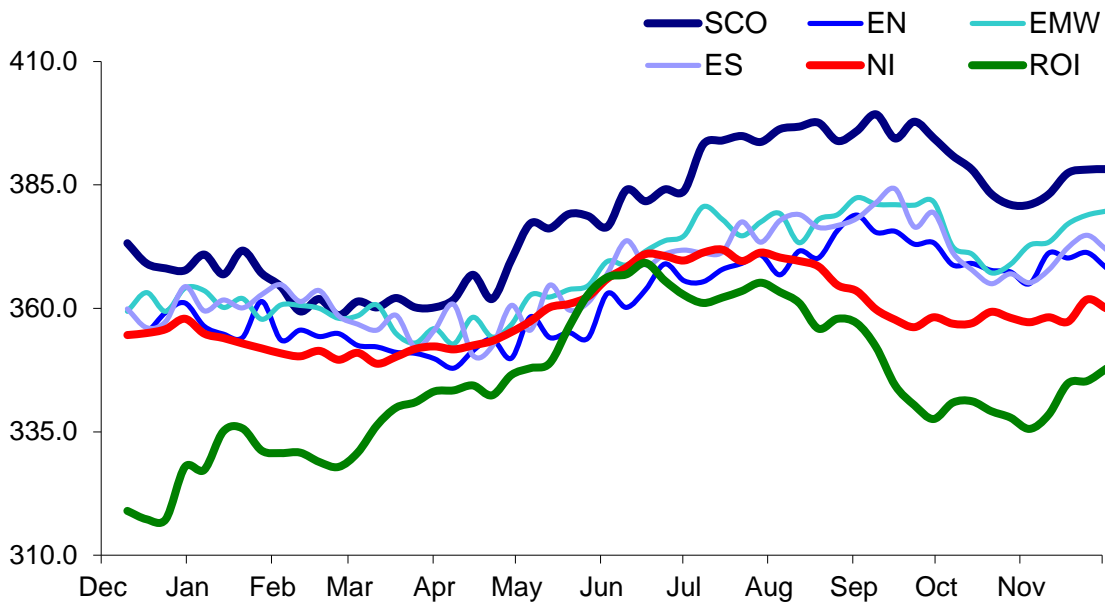
52 Weeks to 02 December 2017



Prices relate to UK Dressing Specification

British Isles R3 Heifer Price

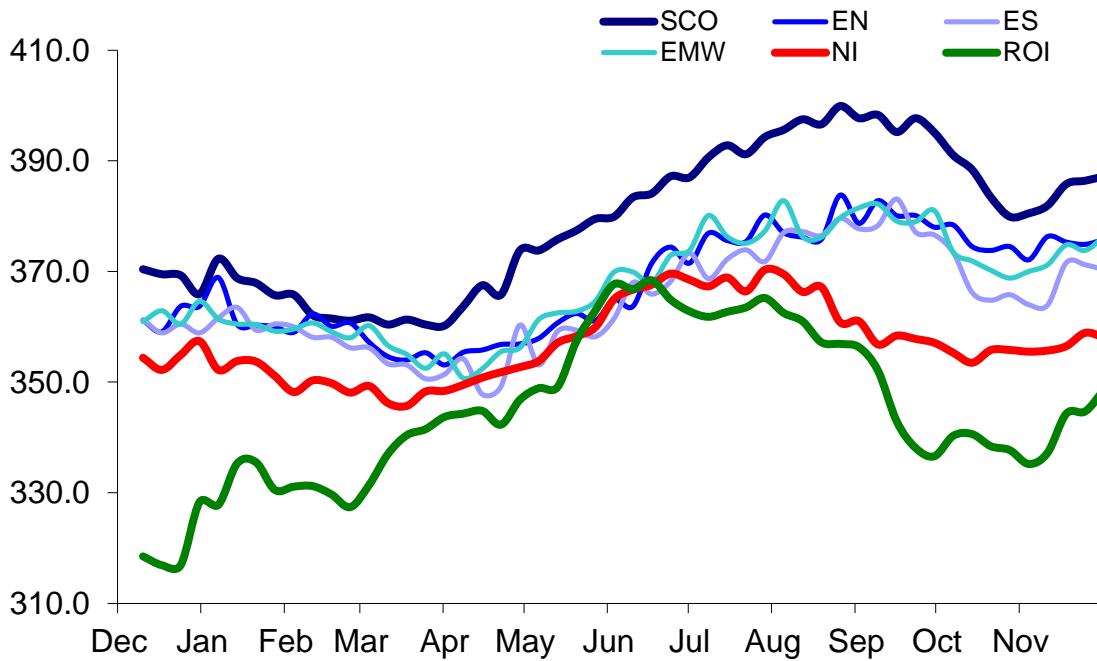
52 Weeks to 02 December 2017



Prices relate to UK Dressing Specification

British Isles R4 Heifer Price

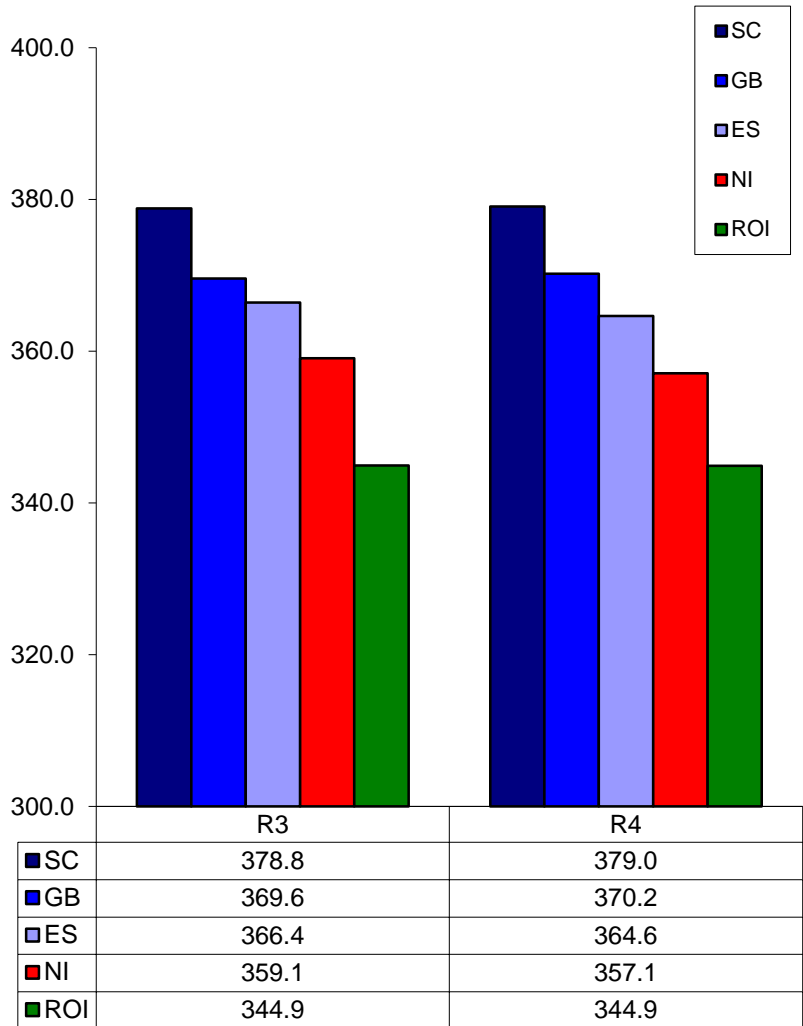
52 Weeks to 02 December 2017



Prices relate to UK Dressing Specification

British Isles Average R3 and R4 Heifer price

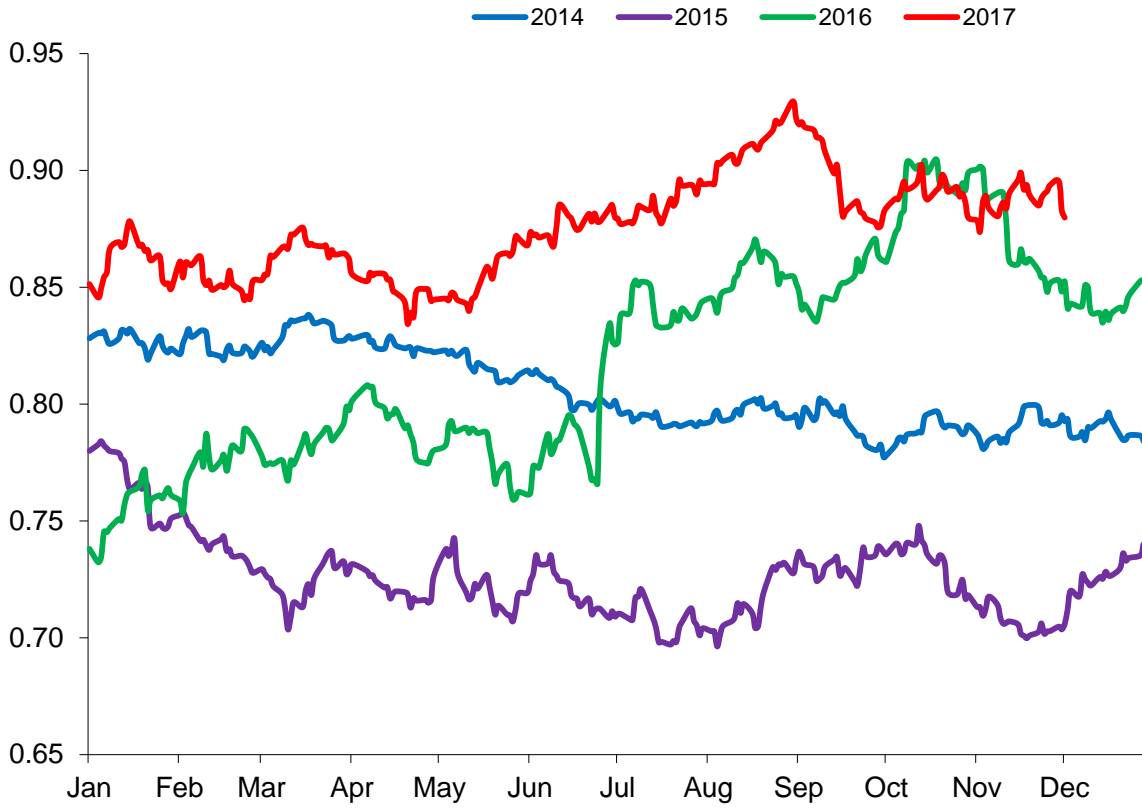
52 Weeks to 02 December 2017



Prices relate to UK Dressing Specification

Exchange Rate £ / Euro

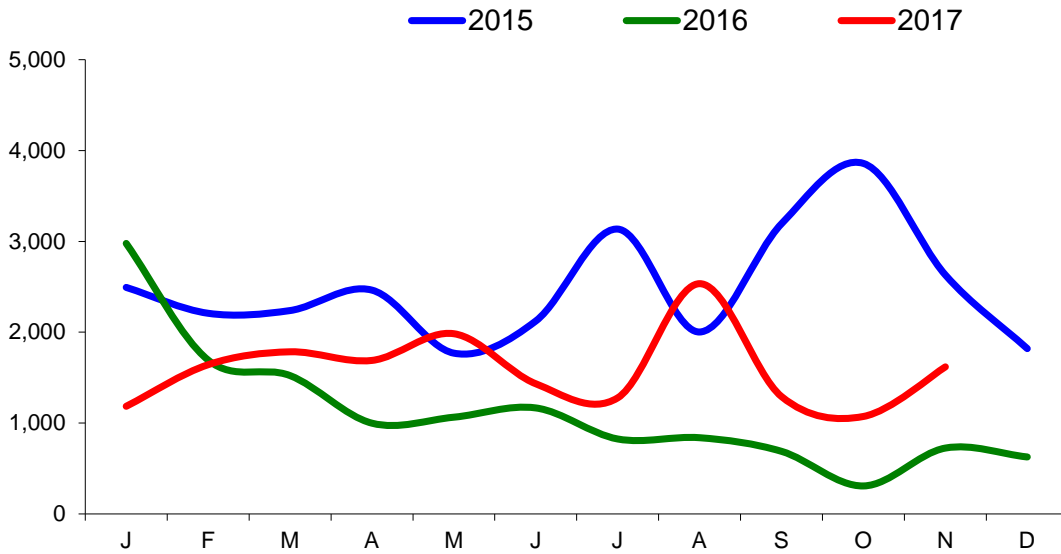
01 January 2014 –30 November 2017



Imports

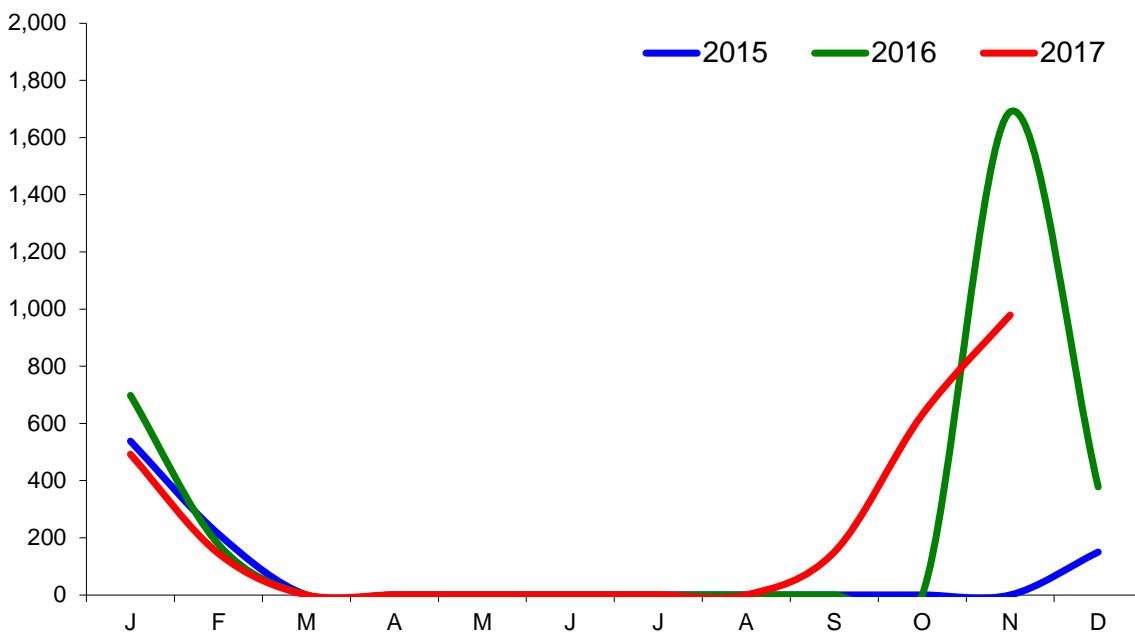
Monthly Live Imports of Cattle into NI for Direct Slaughter

From ROI and GB Combined



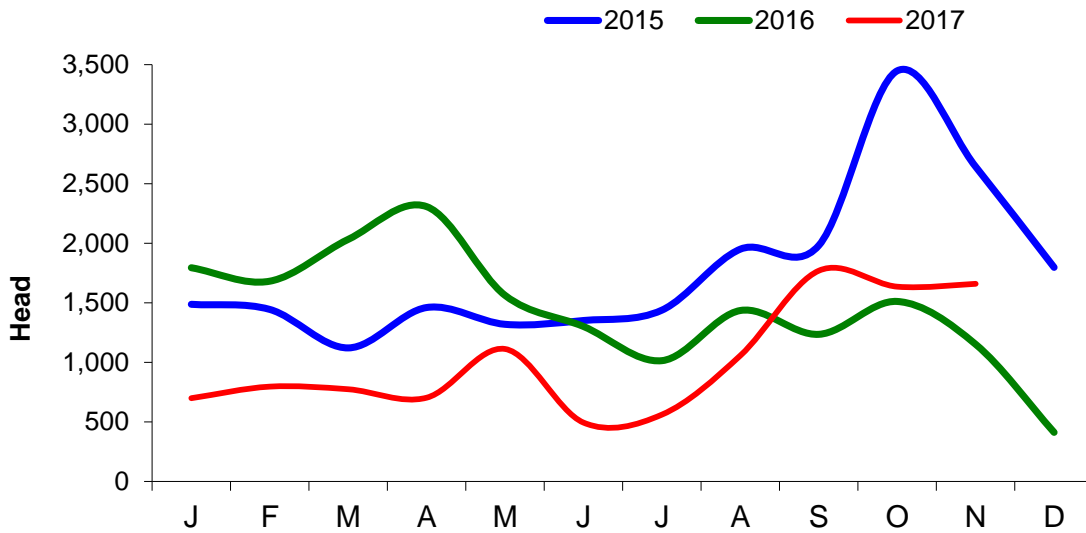
Monthly Live Imports of Sheep into NI for Direct Slaughter

From ROI and GB Combined



Exports

Monthly Live Exports of Cattle from NI into ROI and GB



Monthly Live Exports of Sheep from NI into ROI and GB

