

LMC

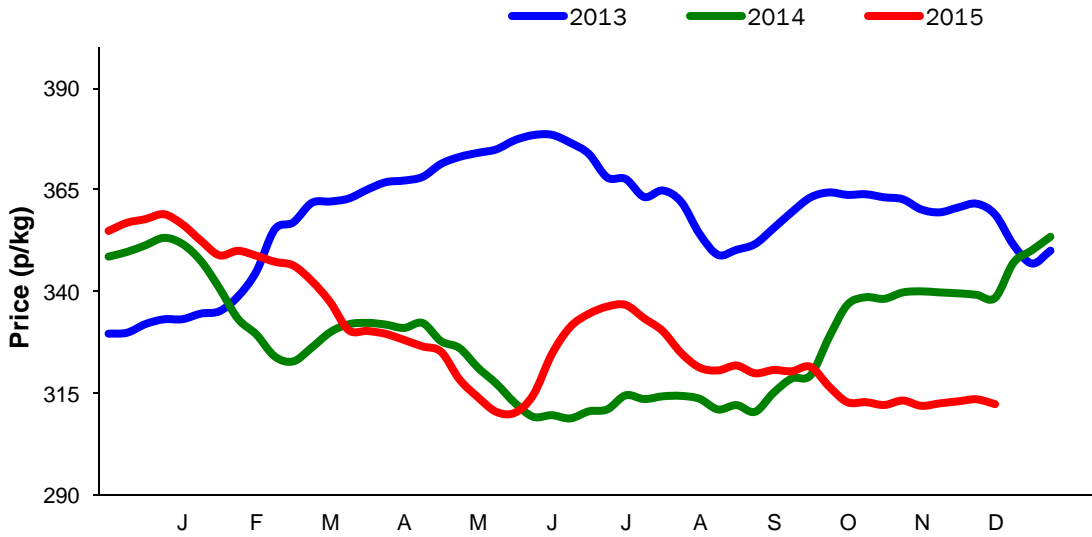
**Monthly Economic Review
November 2015**

Contents

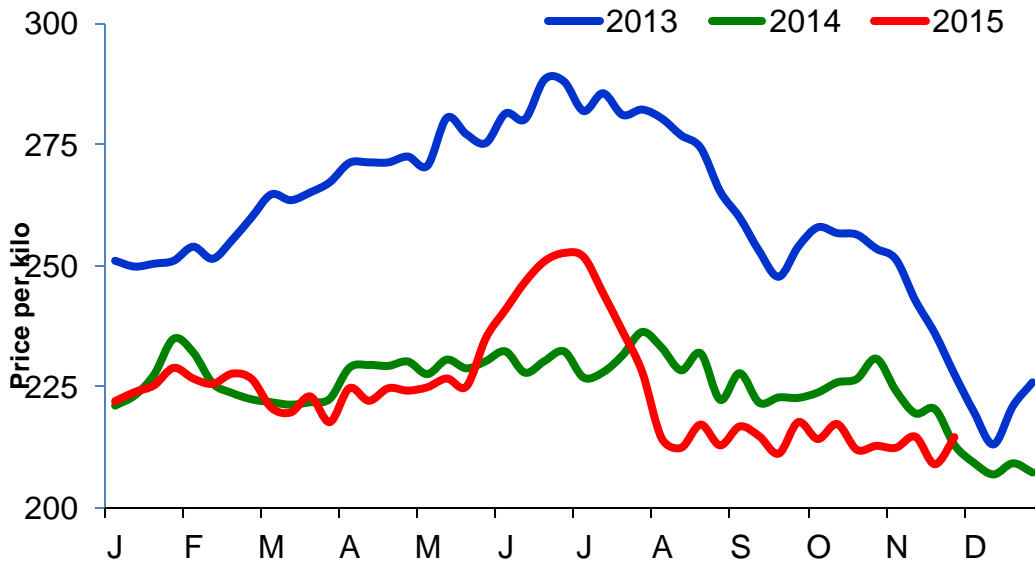
Contents.....	3
Cattle Prices	4
Average NI Clean Cattle Price	4
Average NI Cow Price	4
Cattle Slaughterings.....	5
NI Clean Cattle Slaughterings – Cumulative	5
NI Weekly Clean Cattle Slaughterings.....	5
NI Weekly Cow Slaughterings.....	5
Sheep Prices.....	6
Average NI Lamb / Hogget Price	6
Sheep Slaughterings	7
Cumulative Lamb & Hogget Slaughterings	7
Total Weekly Lamb & Hogget Slaughterings	7
Total Weekly Ewe and Ram Slaughterings.....	7
Total Carcase Weight Produced for the Food Chain.....	8
Change in Throughput / Production	9
Supply and Price	10
NI Lamb/Hogget Kill vs. Average Lamb / Hogget Price	10
NI Clean Cattle Kill vs. Average Clean Cattle Price	10
British Isles Price Comparisons	11
UK Average Cow Prices	11
Weekly UK Cow Prices	11
British Isles R3 Steer Price	12
British Isles R4 Steer Price	12
British Isles Average R3 and R4 Steer price	13
British Isles R3 Heifer Price	14
British Isles R4 Heifer Price	14
British Isles Average R3 and R4 Heifer price	15
Exchange Rate £ / Euro	17
Imports	18
Monthly Live Imports of Cattle into NI for Direct Slaughter	18
Monthly Live Imports of Sheep into NI for Direct Slaughter	18
Exports	19
Monthly Live Exports of Cattle from NI into RoI and GB.....	19
Monthly live Exports of Sheep from NI into RoI and GB.....	19

Cattle Prices

Average NI Clean Cattle Price

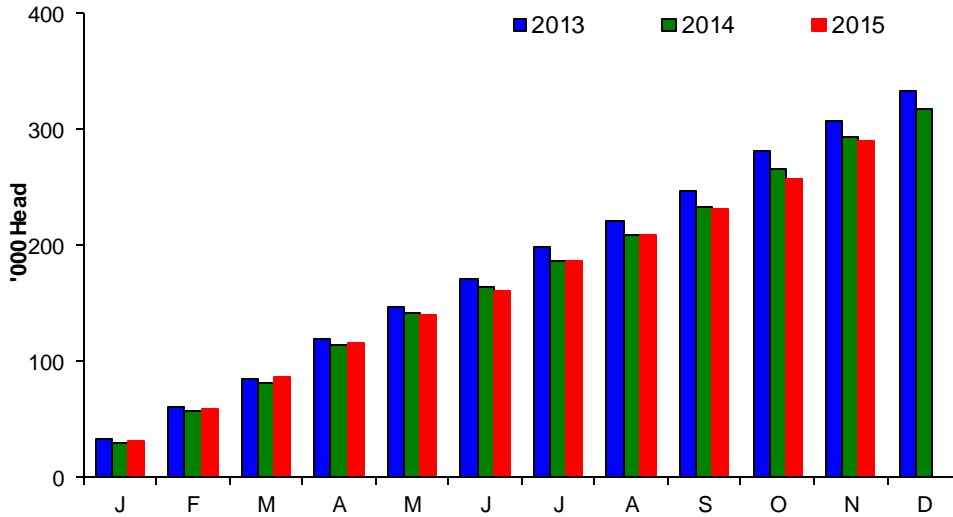


Average NI Cow Price

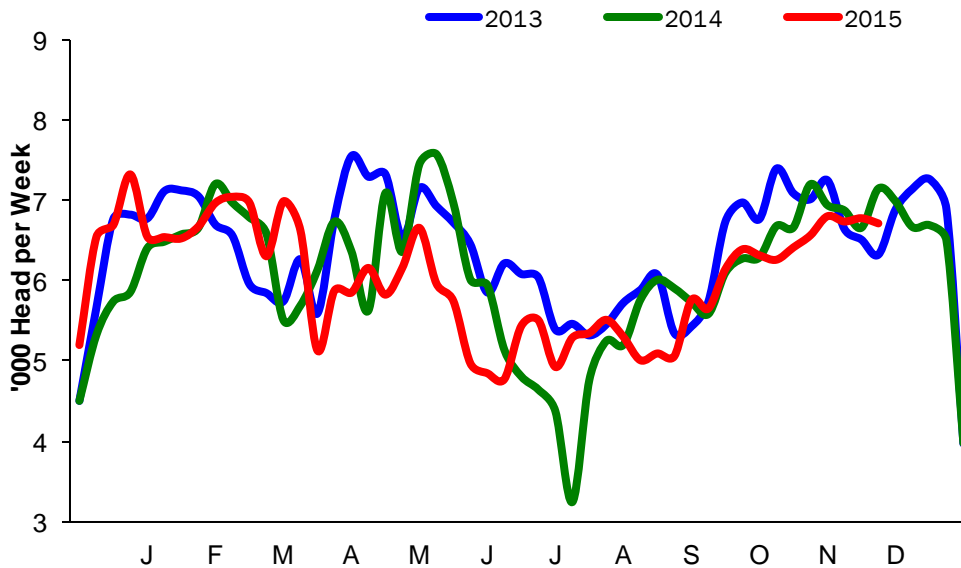


Cattle Slaughtering

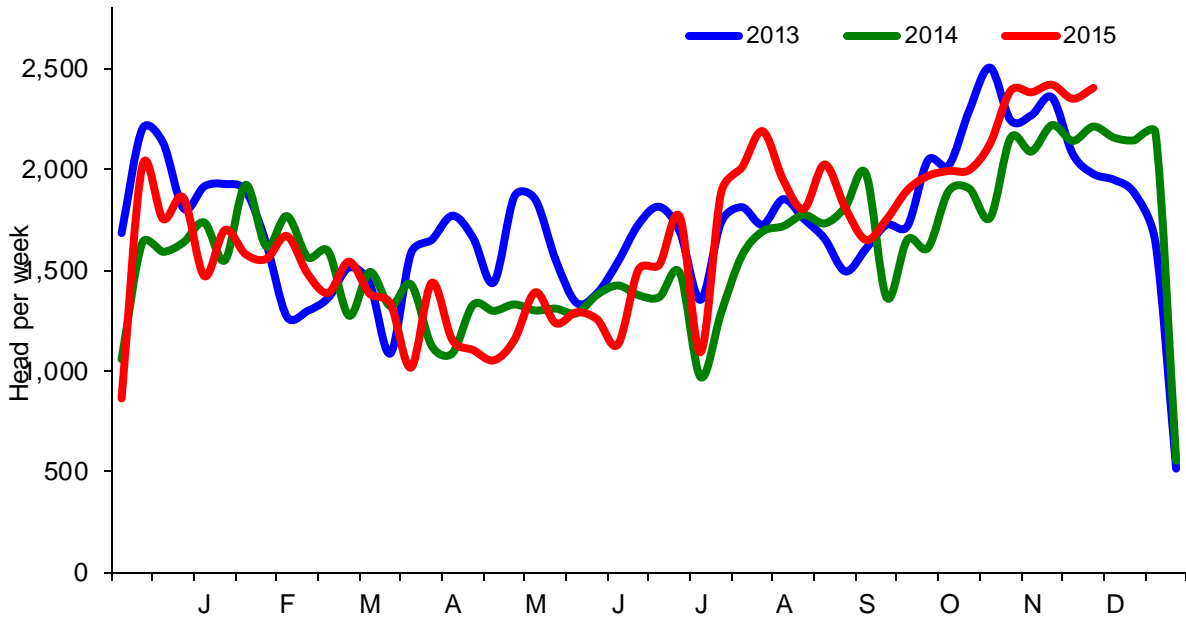
NI Clean Cattle Slaughtering – Cumulative



NI Weekly Clean Cattle Slaughtering

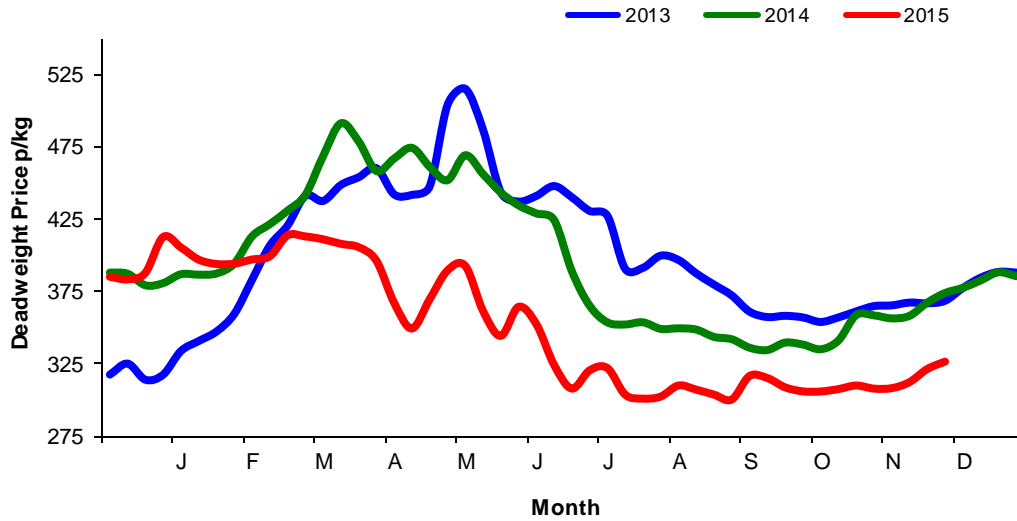


NI Weekly Cow Slaughtering



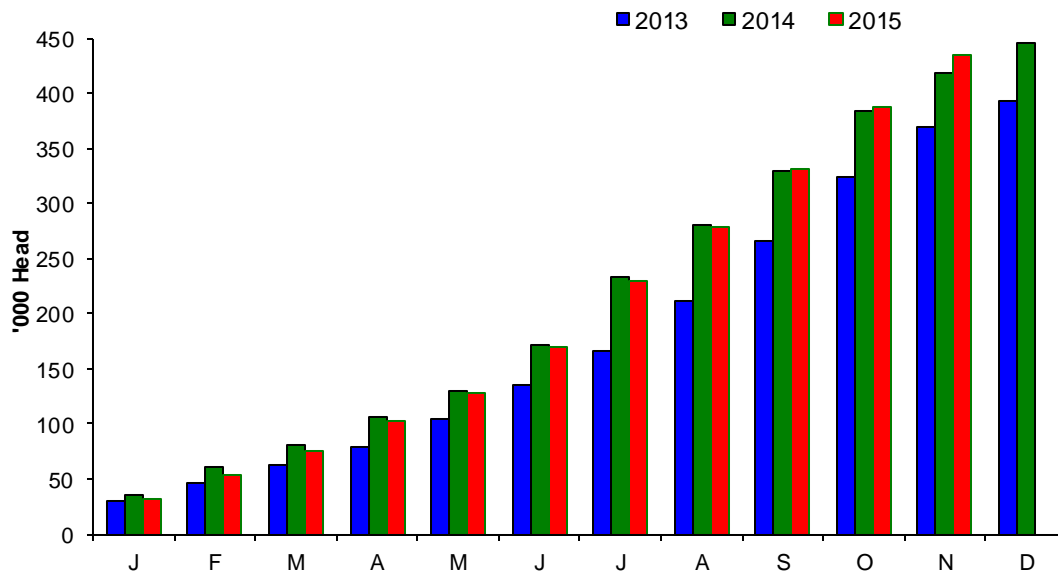
Sheep Prices

Average Deadweight NI Hogget / Lamb Price

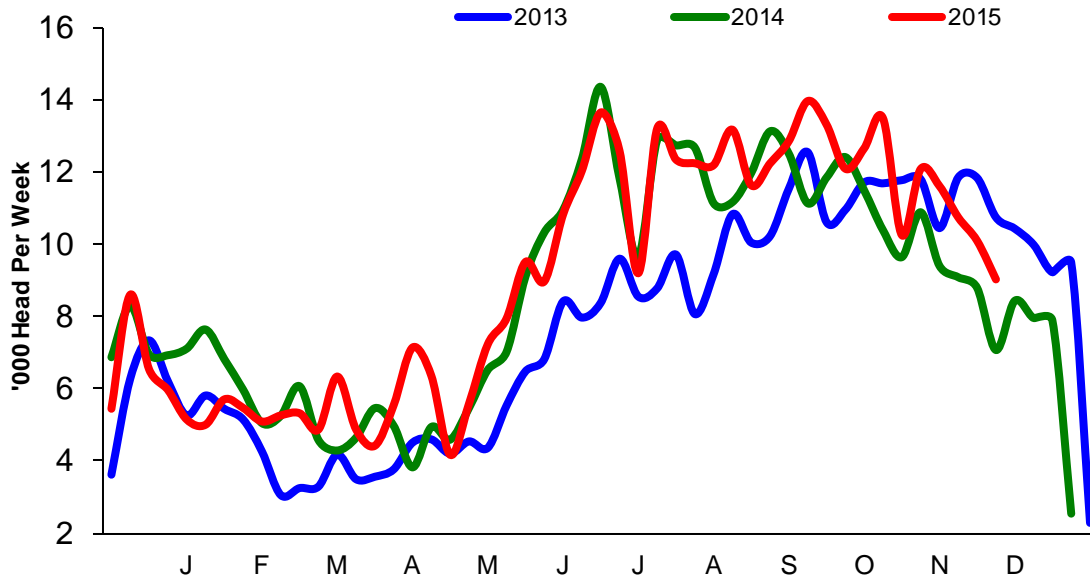


Sheep Slaughterings

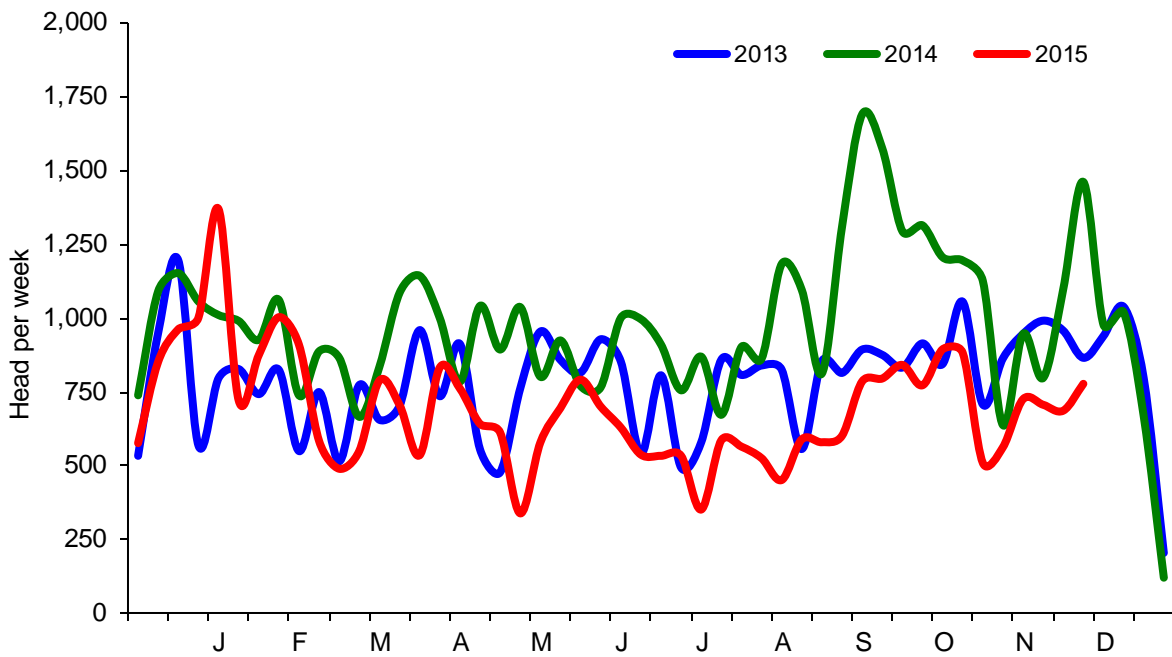
Cumulative Lamb & Hogget Slaughterings



Total Weekly Lamb & Hogget Slaughtering



Total Weekly Ewe and Ram Slaughtering



Market Information November 2015
Page 9

NI CATTLE AND SHEEP SLAUGHTERINGS FOR THE FOODCHAIN						
	November			Year to Date		
	(4 weeks ended 28/11/15)			(48 weeks ended 28/11/15)		
	Nov-14	Nov-15	% Change	2014	2015	Change
CATTLE						
Steers	15,465	15,571	+1%	141,492	154,073	+9%
Heifers	10,574	9,537	-10%	111,027	107,351	-3%
Young Bulls / Calves	1,629	1,918	+18%	41,862	28,364	-32%
Total Prime Cattle	27,668	27,026	-2%	294,381	289,788	-2%
Calves	553	553	+0%	8,714	5,901	+0%
Cows	8,660	9,555	+10%	75,816	79,697	+5%
Mature Bulls	410	460	+12%	6,350	3,674	-42%
Total Cattle	37,291	37,594	+1%	385,261	379,060	-2%
SHEEP						
Lambs & Hoggets	34,347	41,475	+21%	418,133	433,961	+4%
Ewes & Rams	4,306	2,898	-33%	48,009	33,325	-31%
Total Sheep	38,653	44,373	+15%	466,142	467,286	+0%
The above figures are provisional; any amendments will be incorporated in the cumulative data (source DARD).						

NI BEEF AND SHEEPMEAT PRODUCTION - FOODCHAIN						
	November			Year to Date		
	(4 weeks ended 28/11/15)			(48 weeks ended 28/11/15)		
	Nov-14	Nov-15	% Change	2013	2014	Change
BEEF						
Steers	5,328	5,620	+5%	48,898	54,431	+11%
Heifers	3,324	3,081	-7%	34,654	34,285	-1%
Young Bulls	536	658	+23%	13,840	9,574	-31%
Total Prime Beef	9,188	9,359	+2%	97,356	98,291	+1%
Calves	110	115	+5%	1,865	1,235	-34%
Cows	2,576	2,927	+14%	23,123	24,383	+5%
Mature Bulls	183	209	+14%	2,565	1,655	-35%
Total Beef	12,057	12,610	+5%	124,910	125,565	+1%
SHEEPMEAT						
Lambs & Hoggets	763	905	+19%	9,071	9,401	+4%
Ewes & Rams	112	78	-30%	1,343	932	-31%
Total Sheepmeat	874	983	+12%	10,414	10,333	-1%
The above figures are provisional; any amendments will be incorporated in the cumulative data (source DARD).						

Market Information November 2015
Page 10

Total Carcase Weight Produced for the Food Chain
Year-to-Date (tonnes – t.)

Month	Prime Cattle		Cows & Bulls		Lambs/Hoggets		Ewes & Rams	
	2014	2015	2014	2015	2014	2015	2014	2015
January	9,784	10,829	2,518	2,569	797	712	143	127
February	9,000	8,936	2,346	2,086	561	476	104	92
March	8,093	9,207	2,203	1,882	446	482	95	66
April	10,615	9,939	2,189	1,917	520	629	150	97
May	9,475	8,318	1,841	1,579	505	537	108	66
June	7,255	6,860	1,897	1,734	898	891	105	81
July	7,349	9,033	2,309	2,779	1,337	1,302	118	77
August	7,555	7,085	2,320	2,578	999	1,041	111	62
September	7,823	7,778	2,261	2,326	1,041	1,121	151	86
October	11,219	10,983	3,046	3,453	1,204	1,306	148	100
November	9,188	9,359	2,759	3,135	763	905	112	78
December								
Total	97,356	98,328	25,688	26,039	9,071	9,401	1,343	932
Change (t.)	972		351		330		-410	
% Change	1.00%		1.37%		3.63%		-30.56%	

**excludes calves*

Change in Throughput / Production
Last 4 weeks 2014/2015

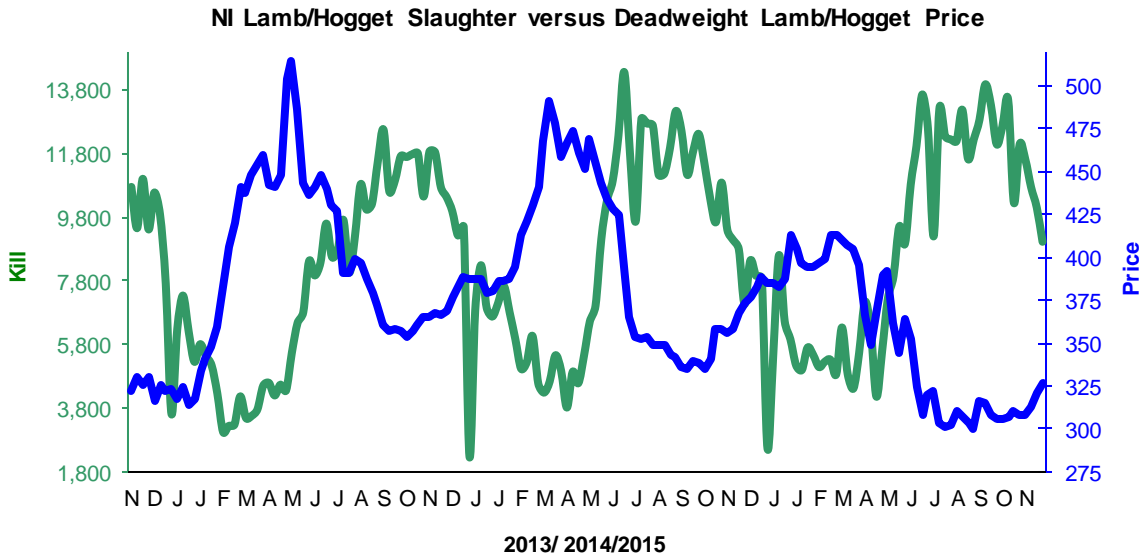
Change in Throughput / Production 2014/2015

November

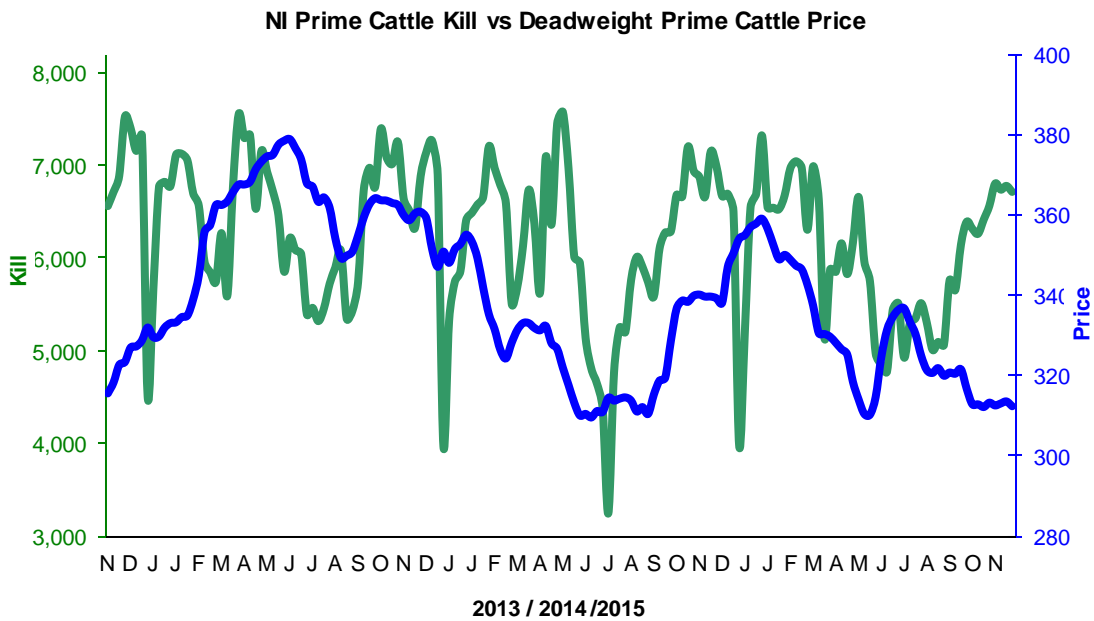
2014/2015	Number	Tonnage	ACW Kg
Prime	-2.3%	1.9%	14.38
Cows	10.3%	13.6%	8.73
Total	0.8%	4.6%	12.04
Lamb	20.8%	18.6%	-0.41
Ewes and Rams	-32.7%	-29.7%	1.18
Total Sheep	14.8%	12.4%	-0.48

Supply and Price

NI Lamb/Hogget Kill vs. Average Lamb / Hogget Price



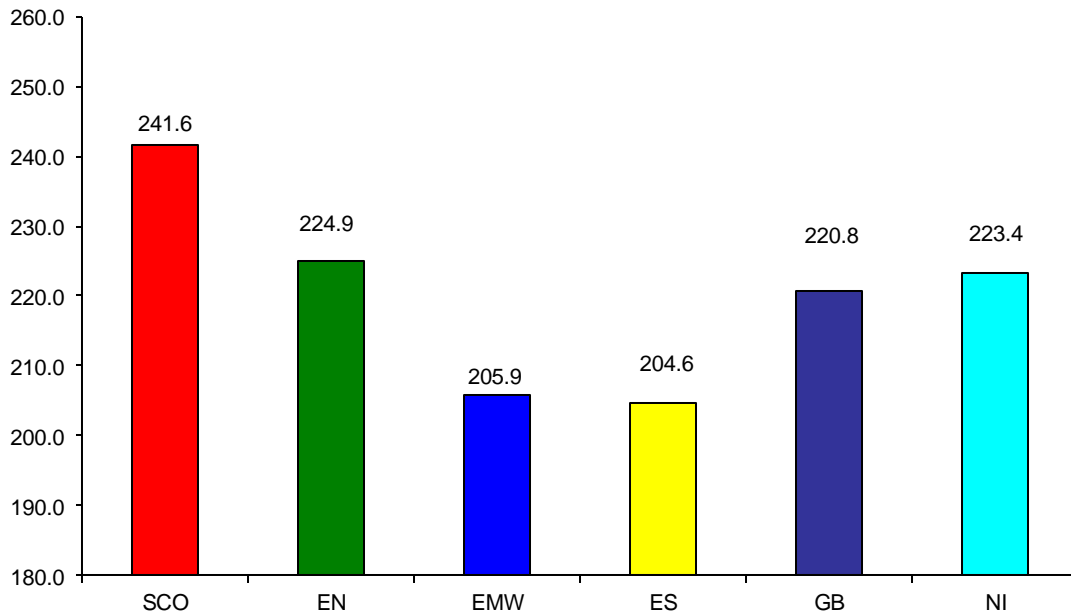
NI Clean Cattle Kill vs. Average Clean Cattle Price



Green	Supply (Kill)
Blue	Price

BRITISH ISLES COMPARISONS

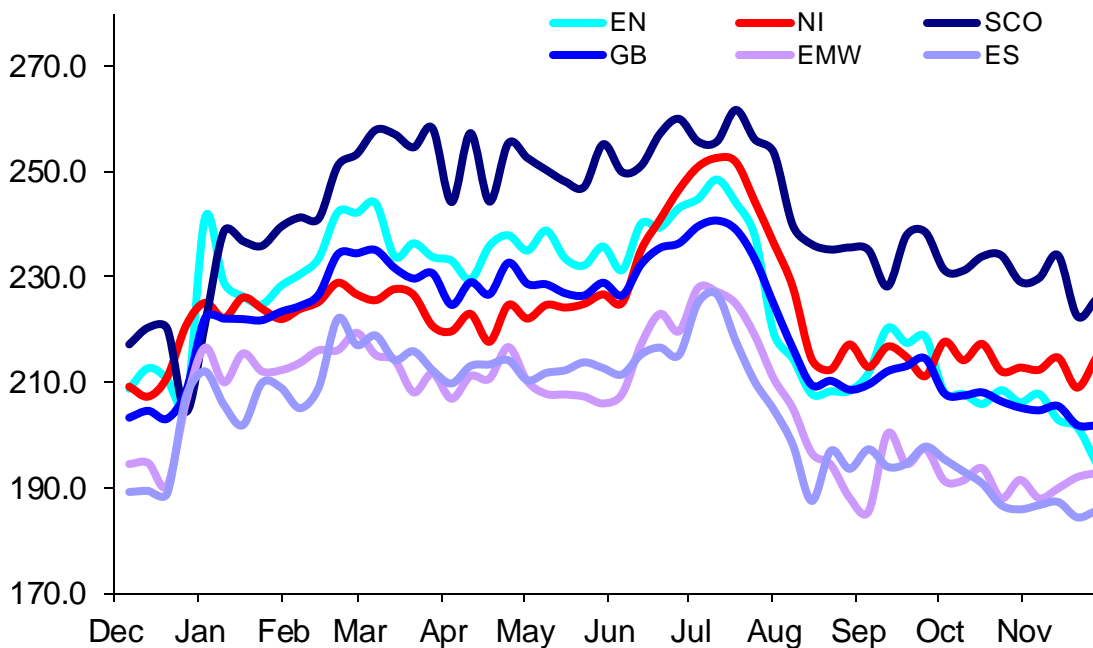
UK Average Cow Prices
52 Weeks to 28 November 2015



SCO	Scotland
EN	England North
EMW	England Midlands and Wales
ES	England South
NI	Northern Ireland
GB	Great Britain

Prices relate to UK Dressing Specification

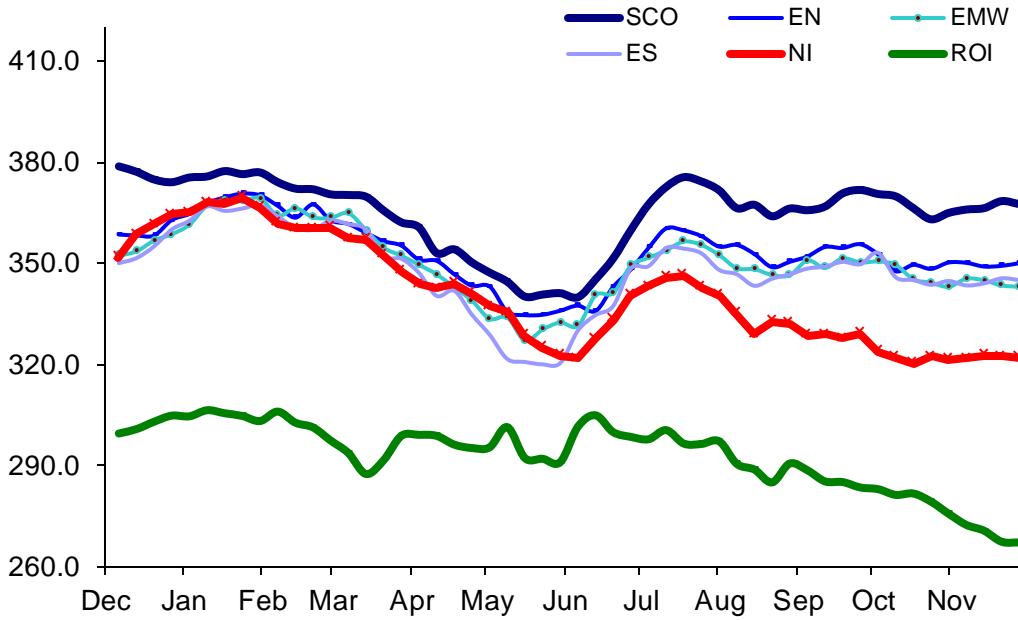
Weekly UK Cow Prices
52 Weeks to 28 November 2015



Market Information November 2015
Page 13

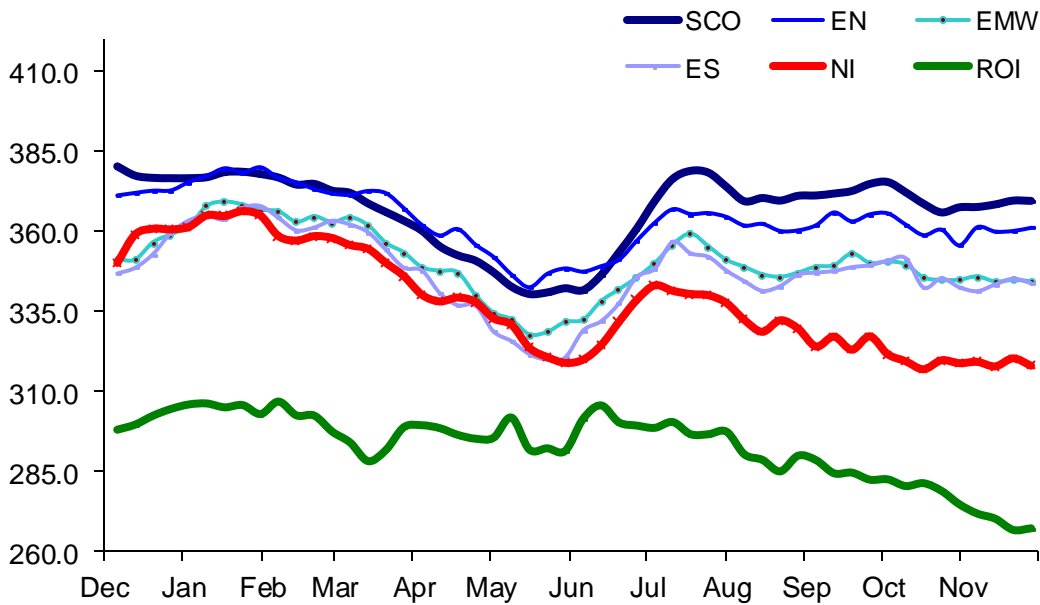
Prices relate to UK Dressing Specification

British Isles R3 Steer Price
52 Weeks to 28 November 2015



Prices relate to UK Dressing Specification

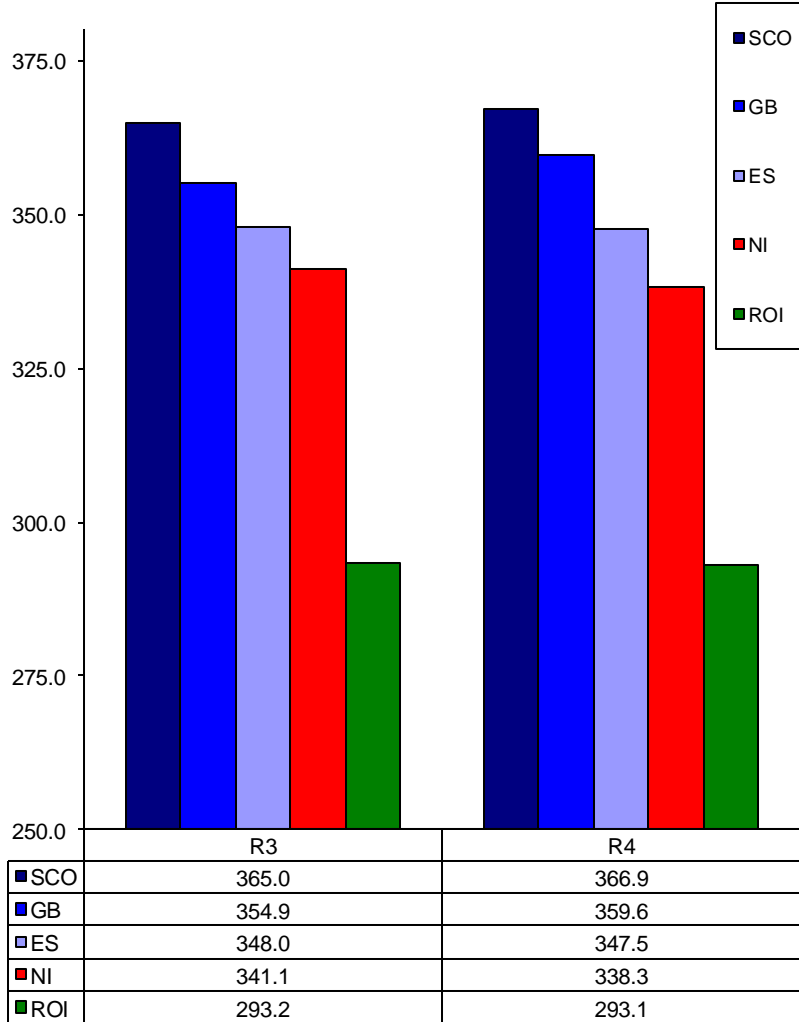
British Isles R4 Steer Price
52 Weeks to 28 November 2015



Prices relate to UK Dressing Specification

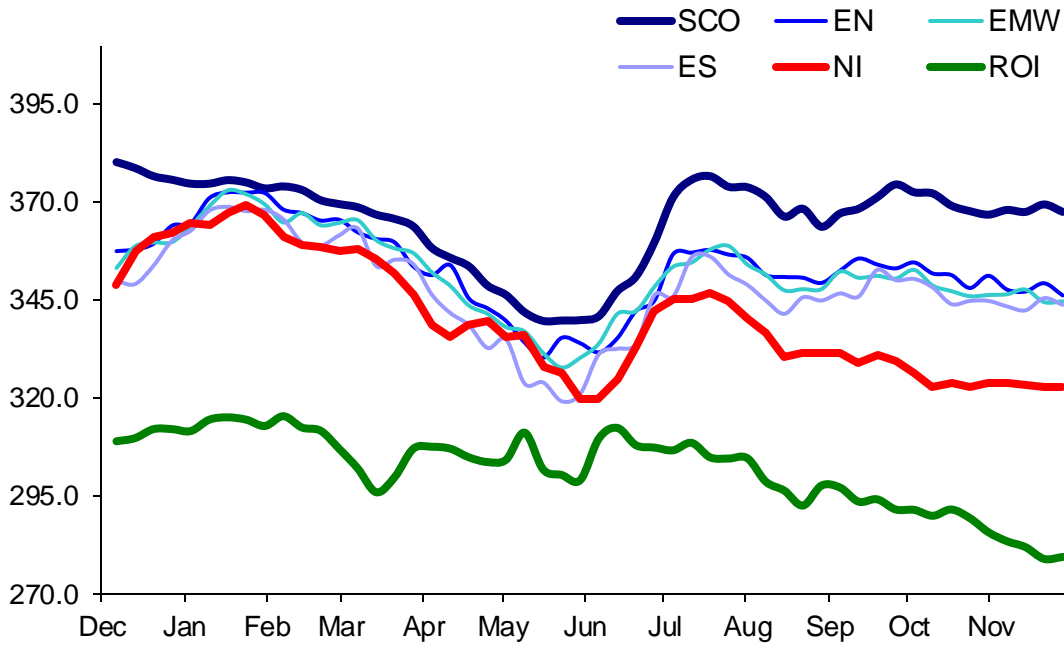
Market Information November 2015
Page 14

British Isles Average R3 and R4 Steer price
52 Weeks to 28 November 2015



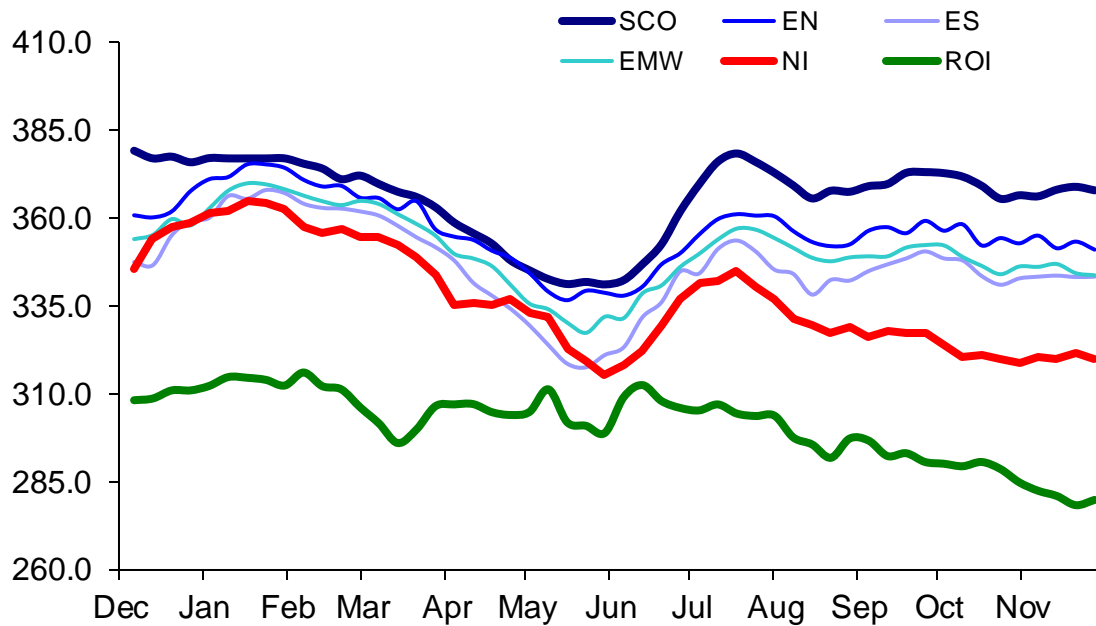
Prices relate to UK Dressing Specification

British Isles R3 Heifer Price
52 Weeks to 28 November 2015



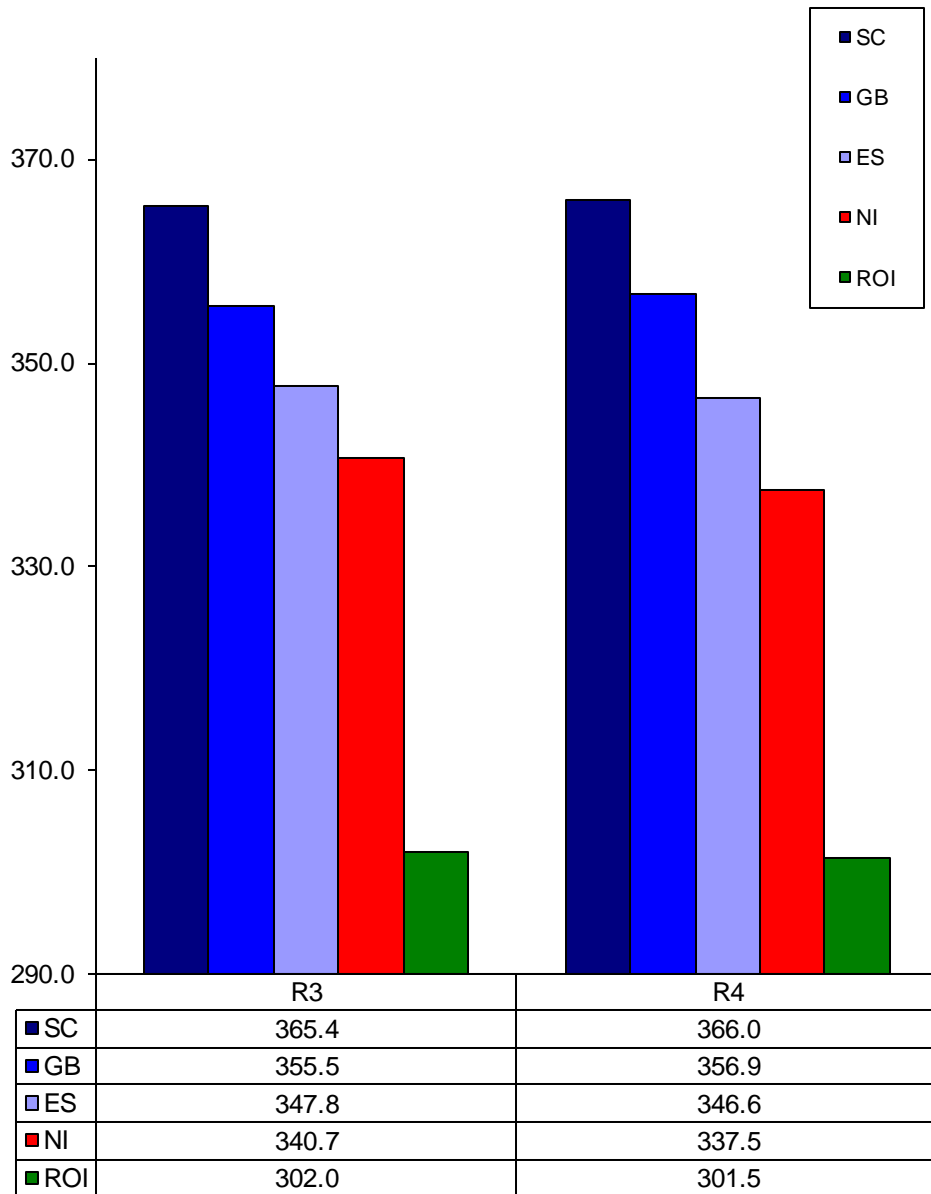
Prices relate to UK Dressing Specification

British Isles R4 Heifer Price
52 Weeks to 28 November 2015



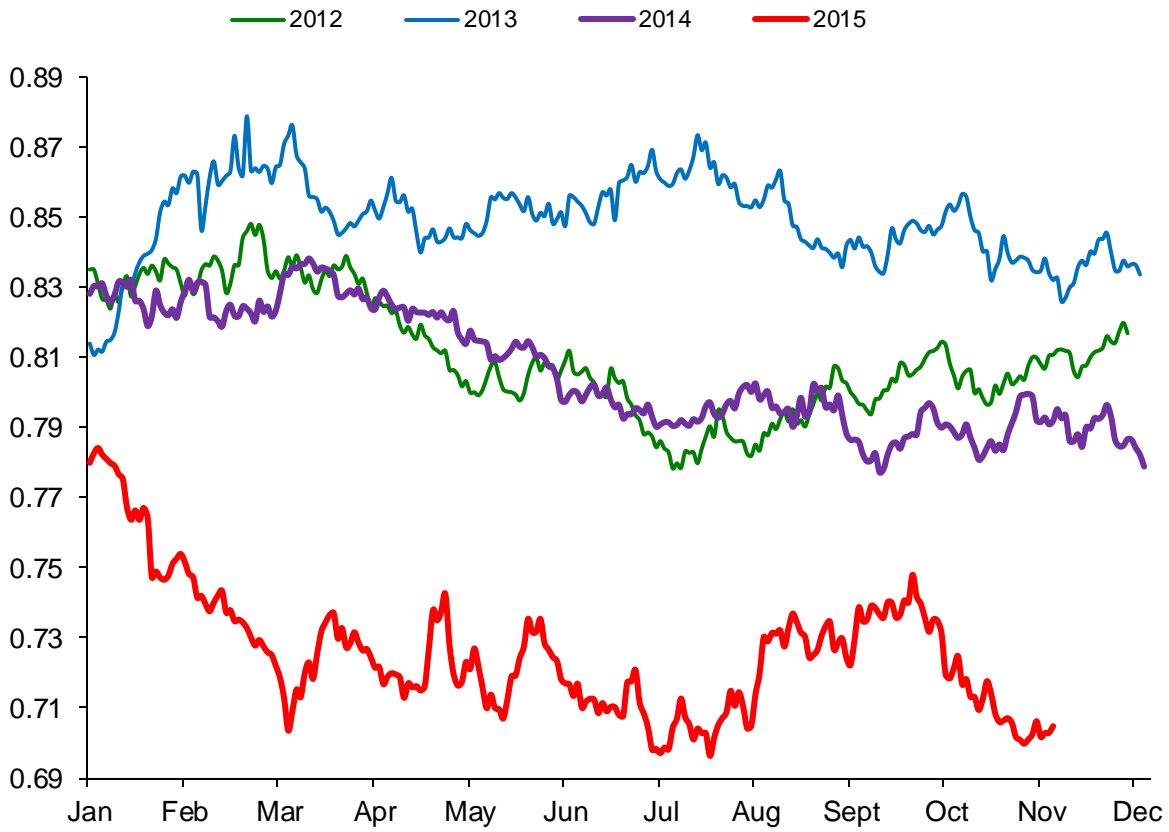
Prices relate to UK Dressing Specification

British Isles Average R3 and R4 Heifer price
52 Weeks to 28 November 2015



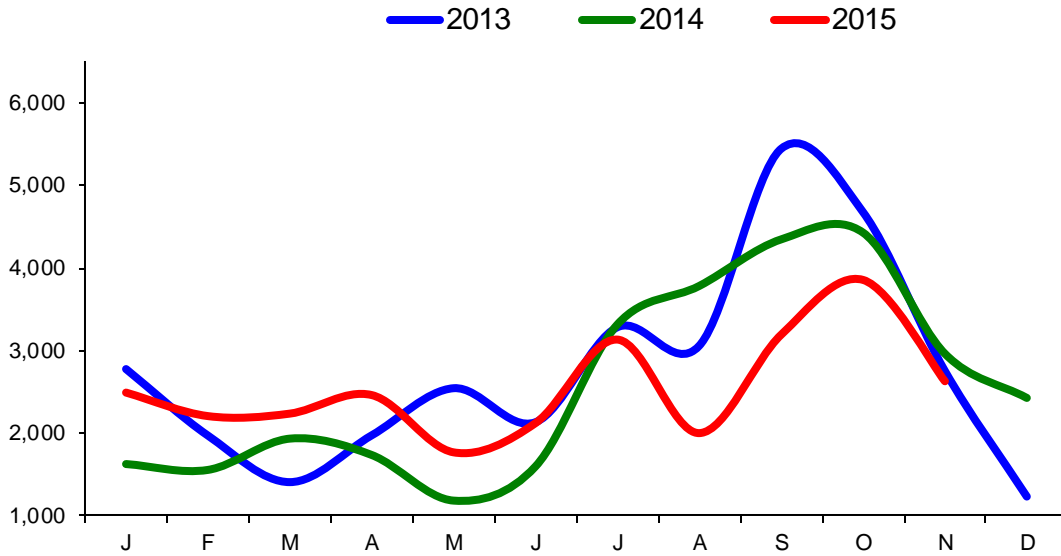
Prices relate to UK Dressing Specification

Exchange Rate £ / Euro
01 January 2012 – 30 November 2015

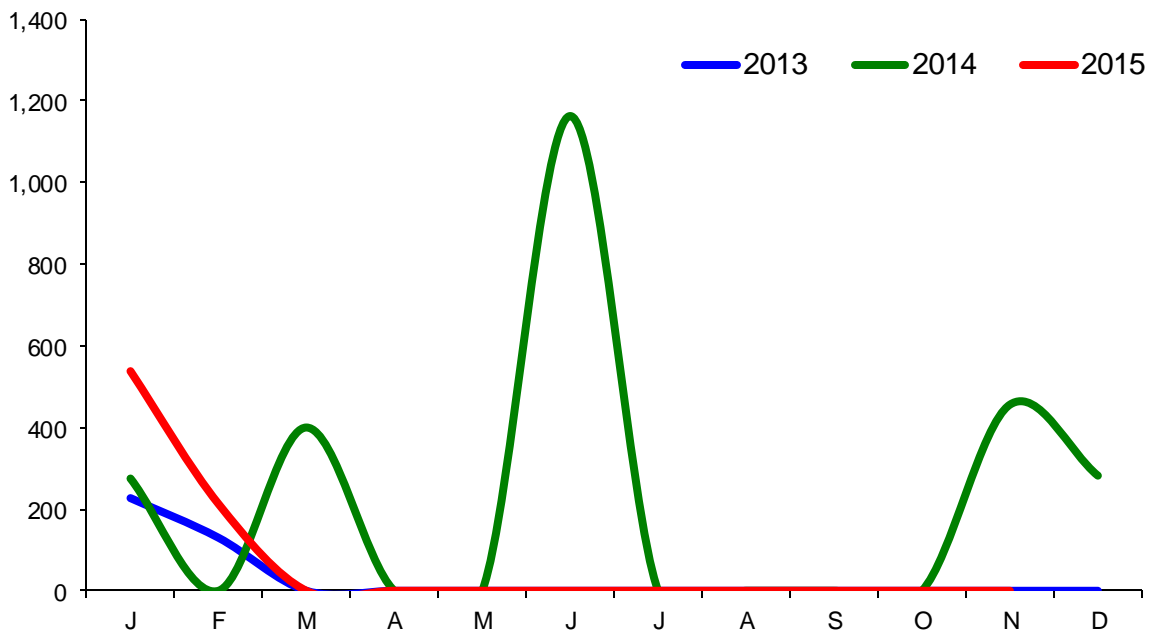


Imports

Monthly Live Imports of Cattle into NI for Direct Slaughter
From ROI and GB Combined

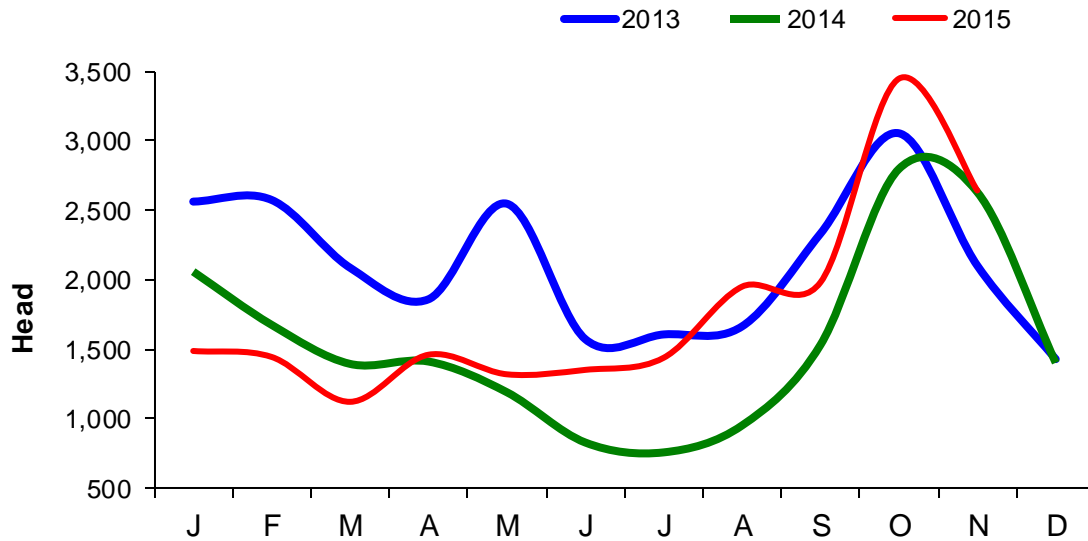


Monthly Live Imports of Sheep into NI for Direct Slaughter
From ROI and GB Combined



Exports

Monthly Live Exports of Cattle from NI into ROI and GB



Monthly Live Exports of Sheep from NI into ROI and GB

