



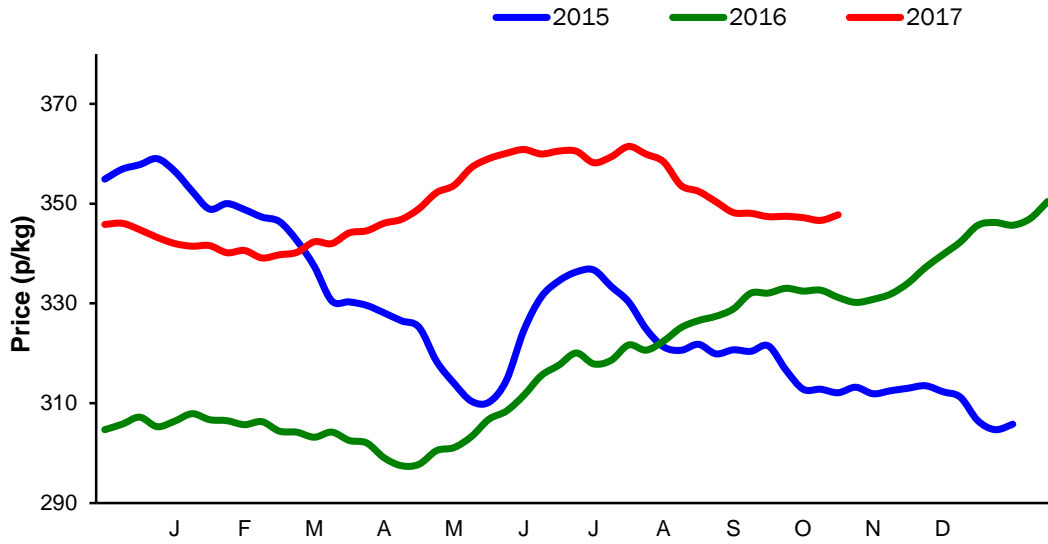
Monthly Economic Review
October 2017

Contents

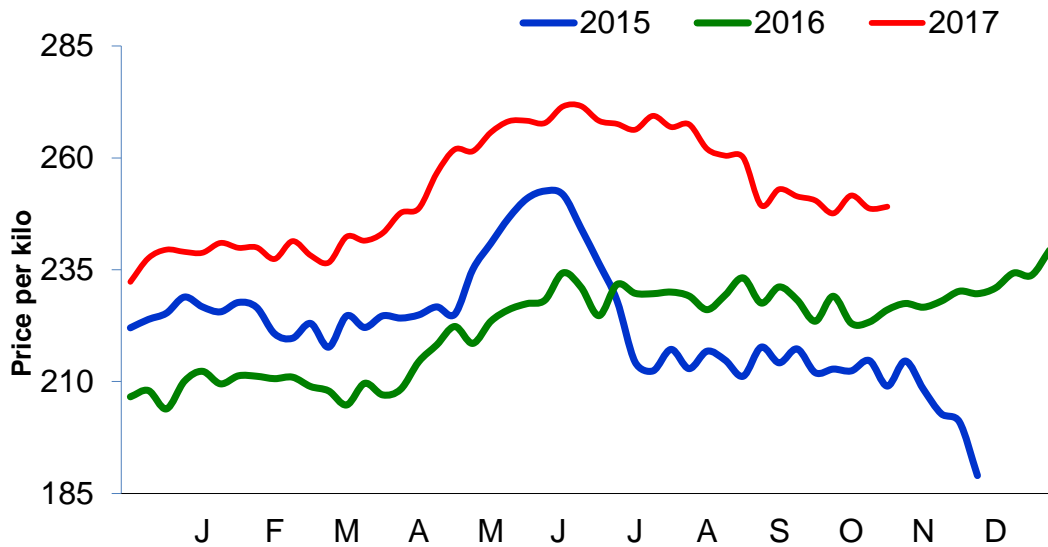
Contents.....	2
Cattle Prices	4
Average NI Clean Cattle Price	4
Average NI Cow Price.....	4
Cattle Slaughtering.....	5
NI Clean Cattle Slaughtering – Cumulative	5
NI Weekly Clean Cattle Slaughtering.....	5
NI Weekly Cow Slaughtering	5
Sheep Prices.....	6
Average NI Lamb / Hogget Price	6
Sheep Slaughtering.....	7
Cumulative Lamb & Hogget Slaughtering	7
Total Weekly Lamb & Hogget Slaughtering	7
Total Weekly Ewe and Ram Slaughtering.....	7
Total Carcase Weight Produced for the Food Chain.....	8
Change in Throughput / Production	9
Supply and Price.....	10
NI Lamb/Hogget Kill vs. Average Lamb / Hogget Price	10
NI Clean Cattle Kill vs. Average Clean Cattle Price.....	10
British Isles Price Comparisons	11
UK Average Cow Prices	11
Weekly UK Cow Prices	11
British Isles R3 Steer Price	12
British Isles R4 Steer Price	12
British Isles Average R3 and R4 Steer price	13
British Isles R3 Heifer Price	14
British Isles R4 Heifer Price	14
British Isles Average R3 and R4 Heifer price.....	15
Exchange Rate £ / Euro	16
Imports.....	17
Monthly Live Imports of Cattle into NI for Direct Slaughter	17
Monthly Live Imports of Sheep into NI for Direct Slaughter	17
Exports	18
Monthly Live Exports of Cattle from NI into RoI and GB.....	18
Monthly live Exports of Sheep from NI into RoI and GB	18

Cattle Prices

Average NI Clean Cattle Price

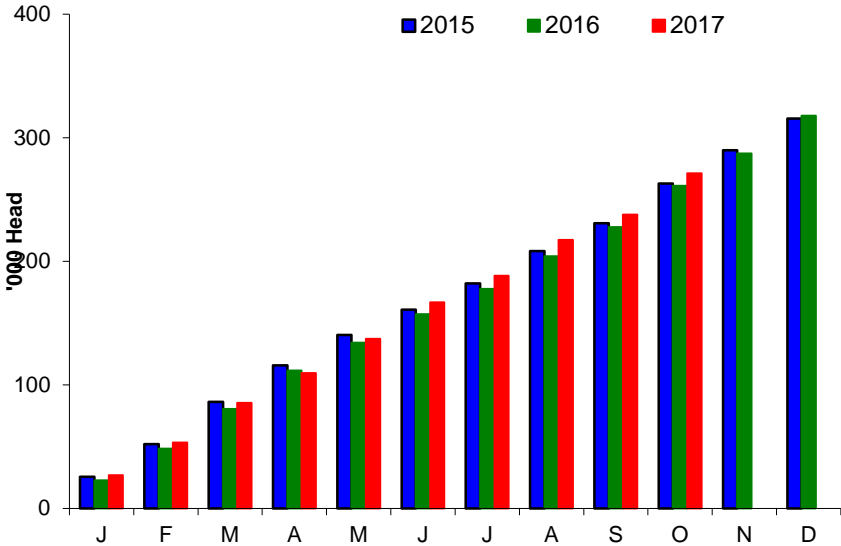


Average NI Cow Price

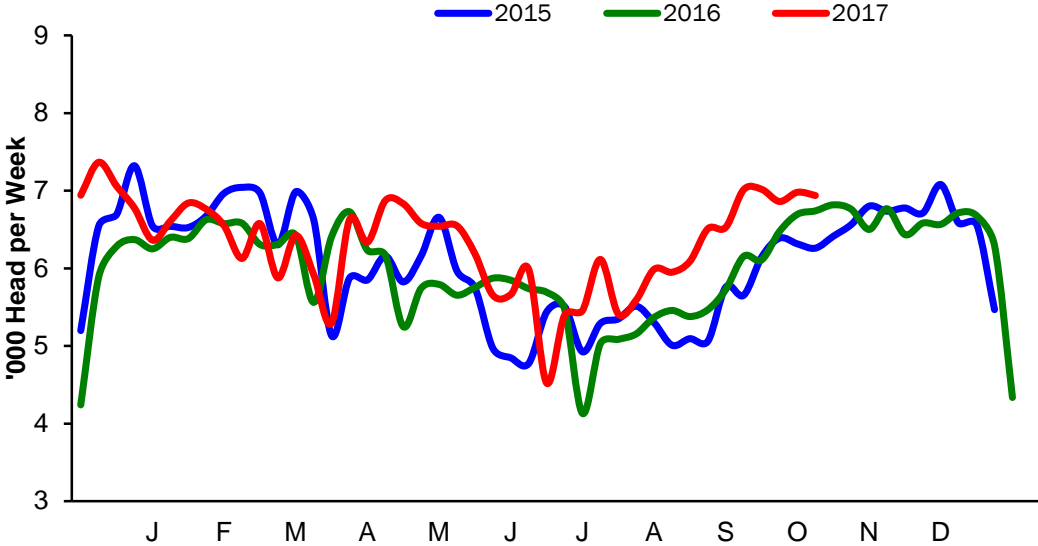


Cattle Slaughtering

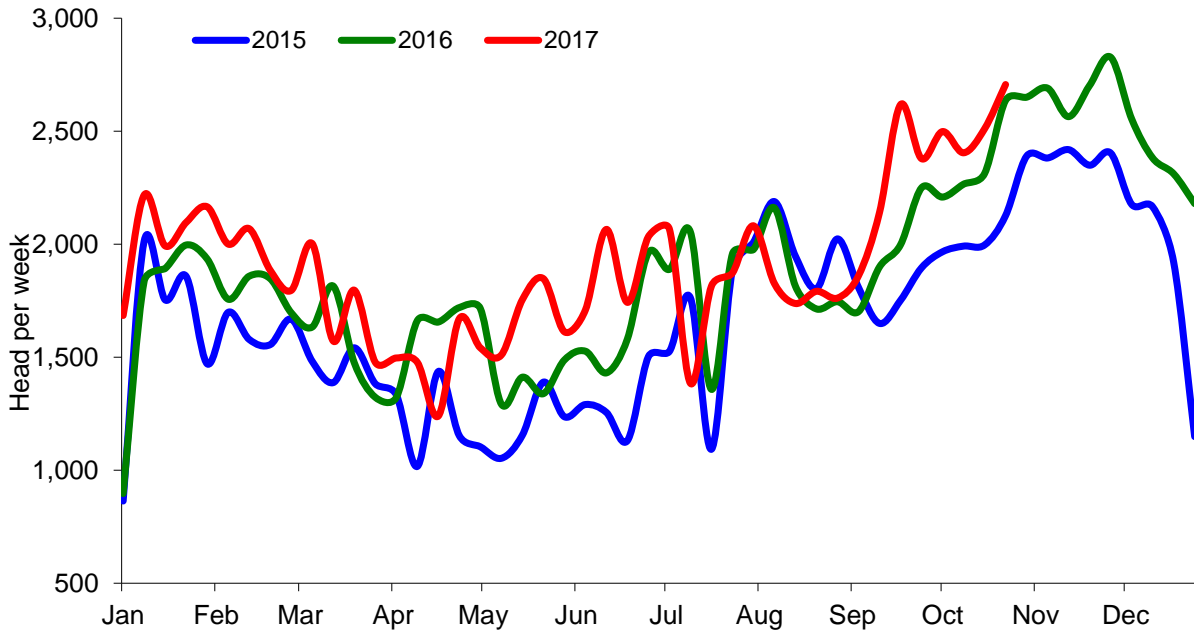
NI Clean Cattle Slaughtering – Cumulative



NI Weekly Clean Cattle Slaughtering

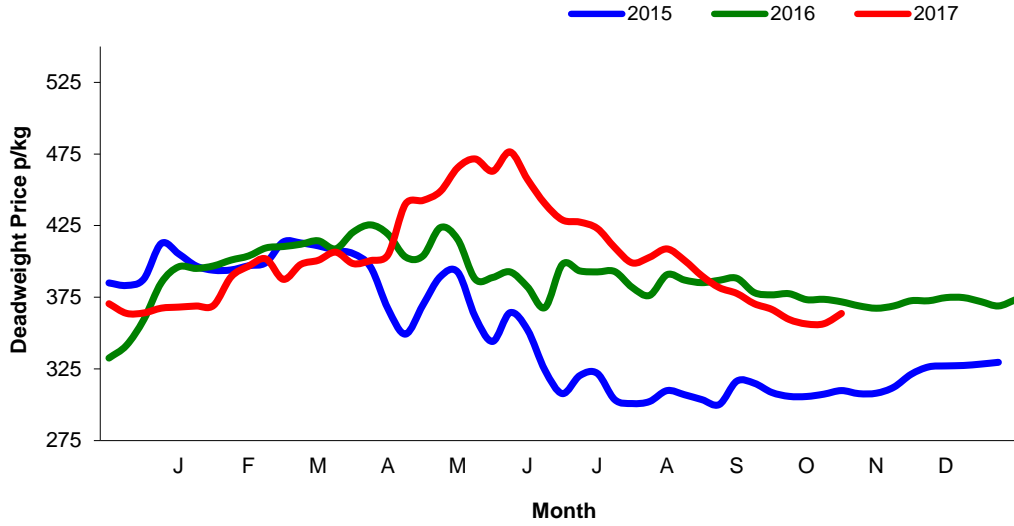


NI Weekly Cow Slaughtering



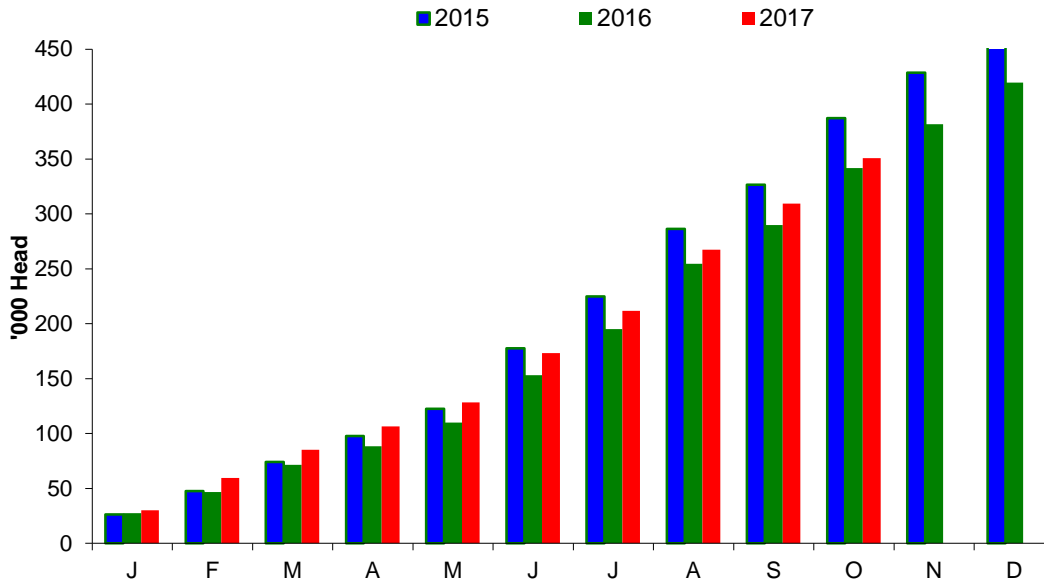
Sheep Prices

Average Deadweight NI Hogget / Lamb Price

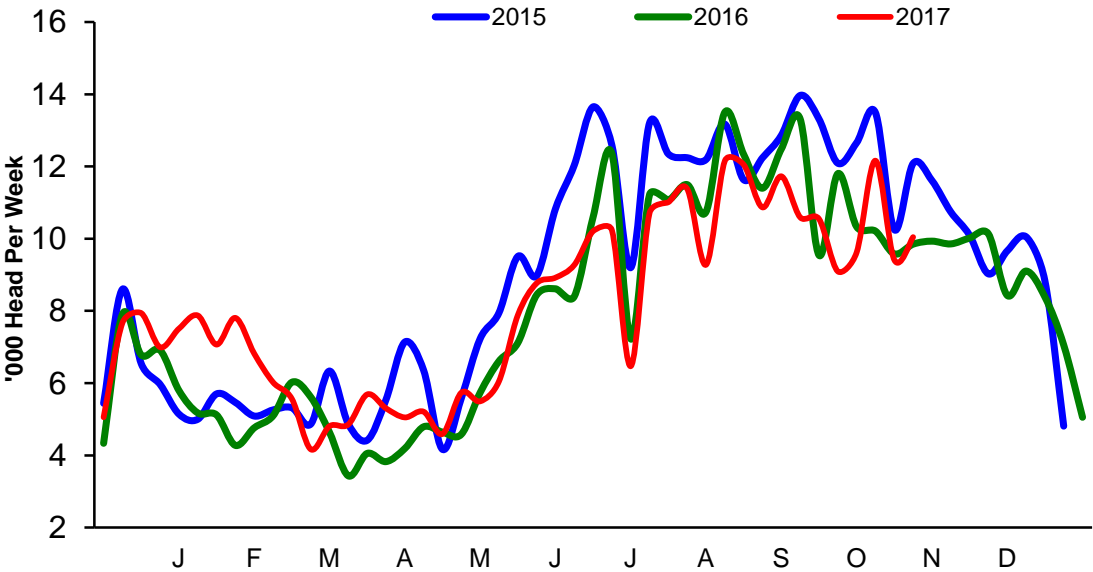


Sheep Slaughterings

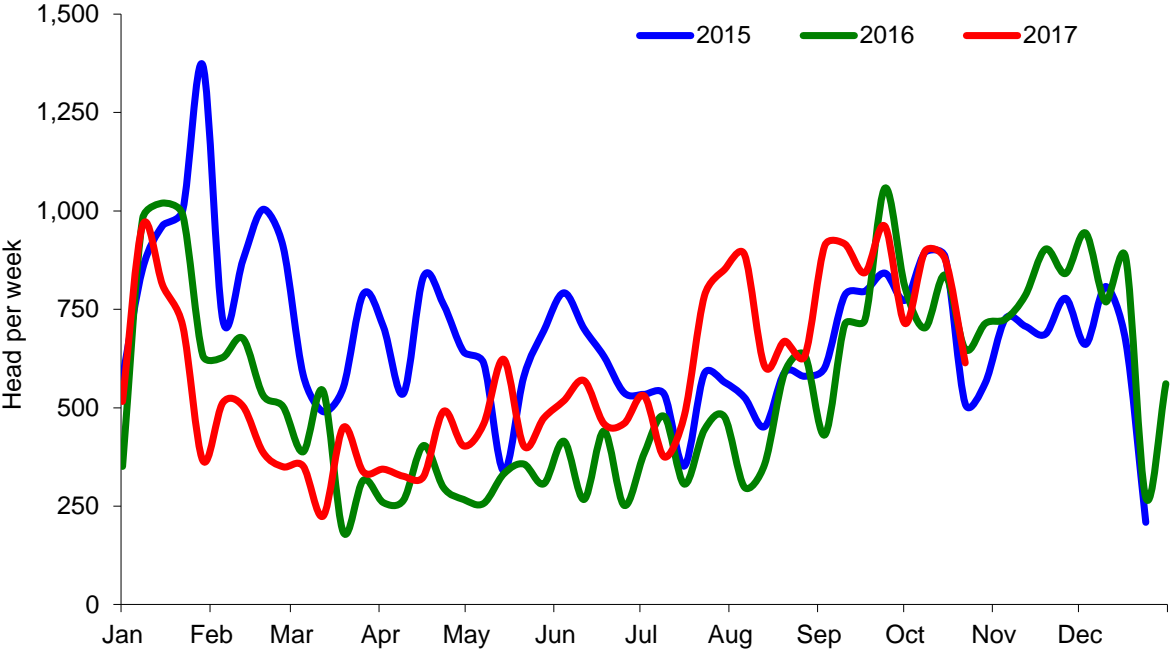
Cumulative Lamb & Hogget Slaughterings



Total Weekly Lamb & Hogget Slaughtering



Total Weekly Ewe and Ram Slaughtering



Market Information October 2017
Page 8

NI CATTLE AND SHEEP SLAUGHTERINGS FOR THE FOODCHAIN						
	October			Year to Date		
	(4 weeks ended 28/10/17)			(30 weeks ended 28/10/17)		
	Oct-16	Oct-17	% Change	2016	2017	Change
CATTLE						
Steers	15,584	15,577	-0%	90,489	94,779	+5%
Heifers	9,153	9,853	+8%	61,387	67,923	+11%
Young Bulls / Calves	2,278	2,367	+4%	23,035	23,129	+0%
Total Prime Cattle	27,015	27,797	+3%	174,911	185,831	+6%
Calves	648	443	-32%	4,243	3,271	-23%
Cows	9,867	10,122	+3%	55,385	57,167	+3%
Mature Bulls	374	294	-21%	2,580	2,250	-13%
Total Cattle	37,904	38,656	+2%	237,119	248,519	+5%
SHEEP						
Lambs & Hoggets	39,970	41,239	+3%	270,057	265,527	-2%
Ewes & Rams	2,903	3,103	+7%	14,461	18,404	+27%
Total Sheep	42,873	44,342	+3%	284,518	283,931	-0%

The above figures are provisional; any amendments will be incorporated in the cumulative data (source DAERA).

NI BEEF AND SHEEPMEAT PRODUCTION - FOODCHAIN						
	October			Year to Date		
	(4 weeks ended 28/10/17)			(26 weeks ended 30/09/17)		
	Oct-16	Oct-17	% Change	2016	2017	Change
BEEF						
Steers	5,466	5,460	-0%	31,949	33,018	+3%
Heifers	2,863	3,117	+9%	19,413	21,324	+10%
Young Bulls	753	782	+4%	7,608	7,732	+2%
Total Prime Beef	9,082	9,359	+3%	58,971	62,074	+5%
Calves	132	84	-36%	897	612	-32%
Cows	2,854	2,957	+4%	16,624	16,990	+2%
Mature Bulls	176	136	-23%	1,183	1,006	-15%
Total Beef	12,244	12,536	+2%	77,675	80,683	+4%
SHEEPMEAT						
Lambs & Hoggets	848	867	+2%	5,675	5,669	-0%
Ewes & Rams	80	81	+2%	417	517	+24%
Total Sheepmeat	927	948	+2%	6,092	6,186	+2%

The above figures are provisional; any amendments will be incorporated in the cumulative data (source DAERA).

Market Information October 2017
Page 9

Total Carcase Weight Produced for the Food Chain
Year-to-Date (tonnes – t.)

Month	Prime Cattle		Cows & Bulls		Lambs/Hoggets		Ewes & Rams	
	2016	2017	2016	2017	2016	2017	2016	2017
January	8,471	9,001	2,489	2,527	599	675	98	82
February	8,906	8,854	2,334	2,581	422	666	61	50
March	10,704	10,578	2,466	2,695	551	582	47	49
April	8,617	8,019	2,188	1,850	367	475	37	45
May	9,529	11,014	2,369	2,670	619	642	50	70
June	7,837	8,027	2,286	2,424	762	773	41	60
July	6,644	7,106	2,407	2,274	868	797	51	61
August	9,014	9,732	2,715	2,726	1,230	1,199	66	103
September	8,248	8,817	2,421	2,614	982	913	92	97
October	9,082	9,359	2,854	2,957	848	867	80	81
November								
December								
Total	87,052	90,508	24,528	25,319	7,247	7,590	623	698
Change (t.)	3,455		792		343		75	
% Change	3.97%		3.23%		4.74%		12.08%	

*excludes calves

Change in Throughput / Production

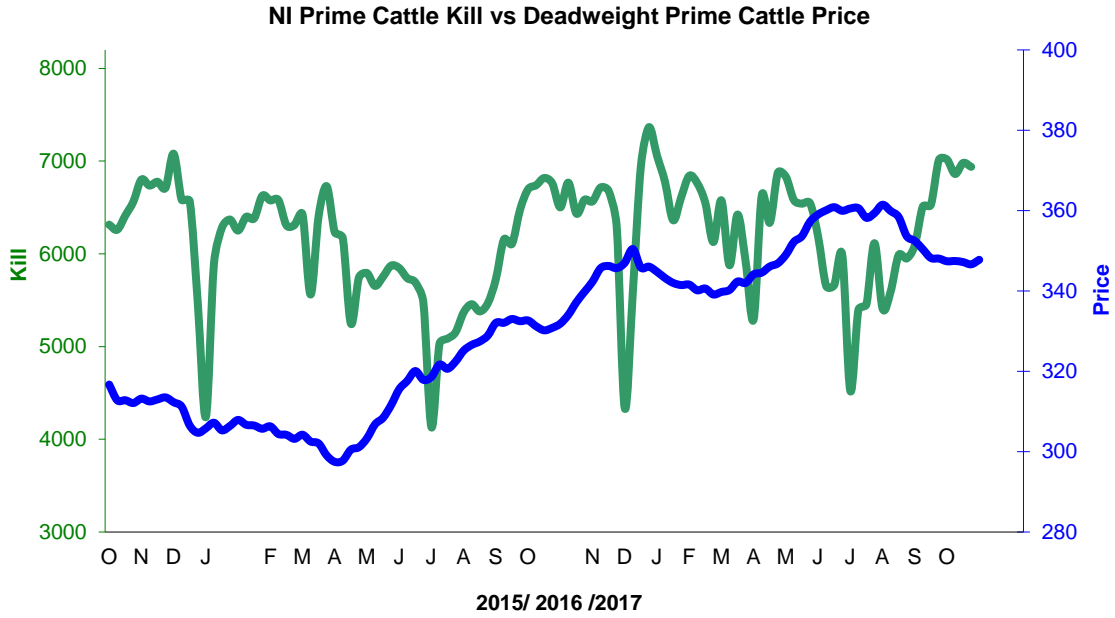
Last 4 weeks 2016/2017

Change in Throughput / Production 2016/2017

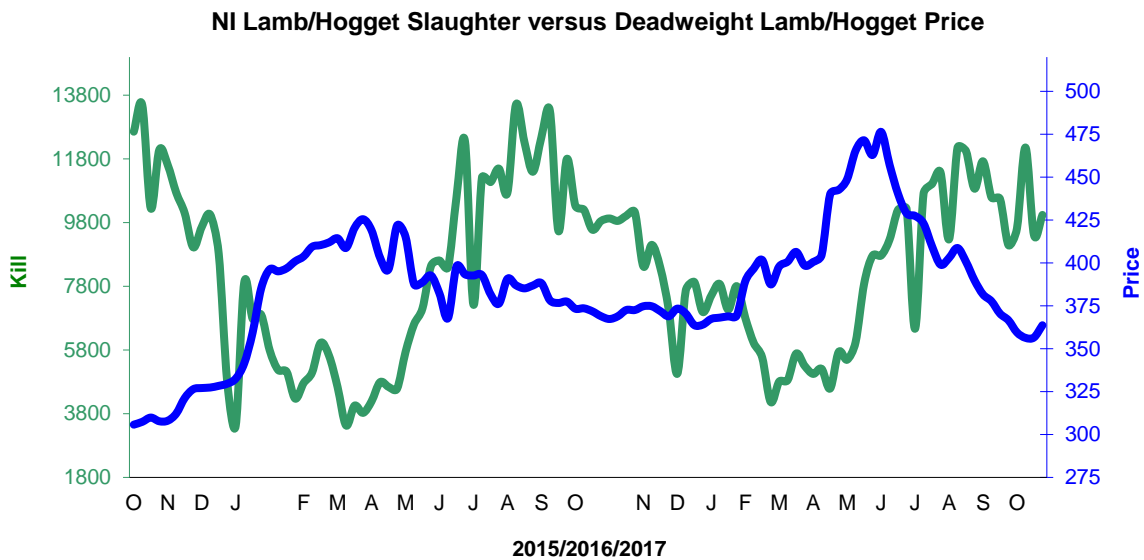
2016/2017	October		
	Number	Tonnage	ACW Kg
Prime	2.9%	3.1%	0.25
Cows	2.6%	3.6%	2.87
Total	2.0%	2.4%	1.21
Lamb	3.2%	2.3%	-0.19
Ewes and Rams	6.9%	1.7%	-1.39
Total Sheep	3.4%	2.3%	-0.24

Supply and Price

NI Clean Cattle Kill vs. Average Clean Cattle Price



NI Lamb/Hogget Kill vs. Average Lamb / Hogget Price

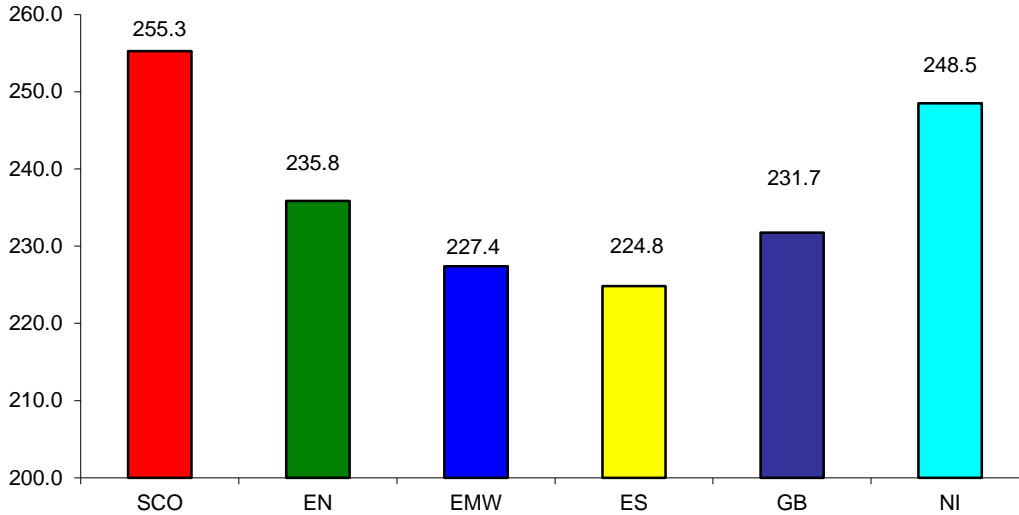


Green	Supply (Kill)
Blue	Price

BRITISH ISLES COMPARISONS

UK Average Cow Prices

52 Weeks to 28 October 2017

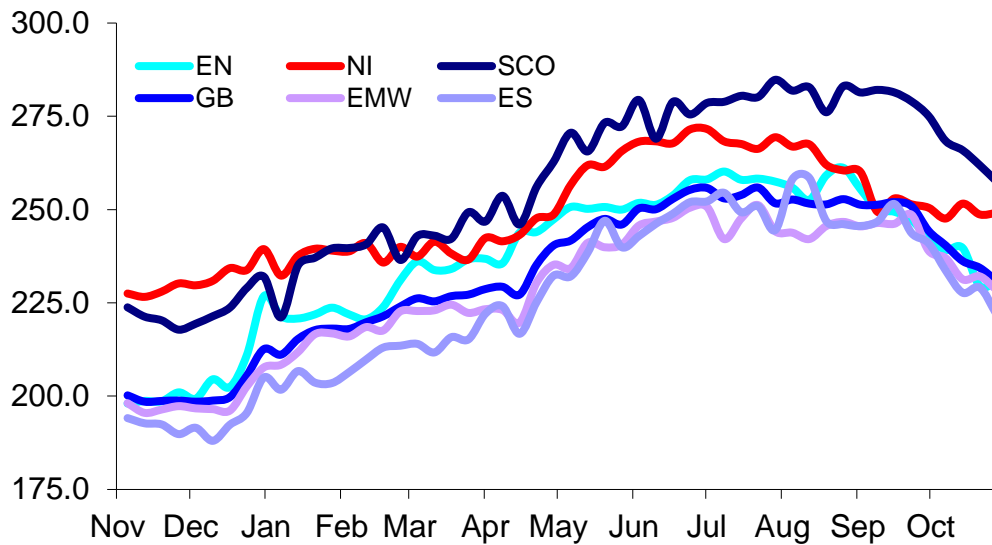


SCO	Scotland
EN	England North
EMW	England Midlands and Wales
ES	England South
NI	Northern Ireland
GB	Great Britain

Prices relate to UK Dressing Specification

Weekly UK Cow Prices

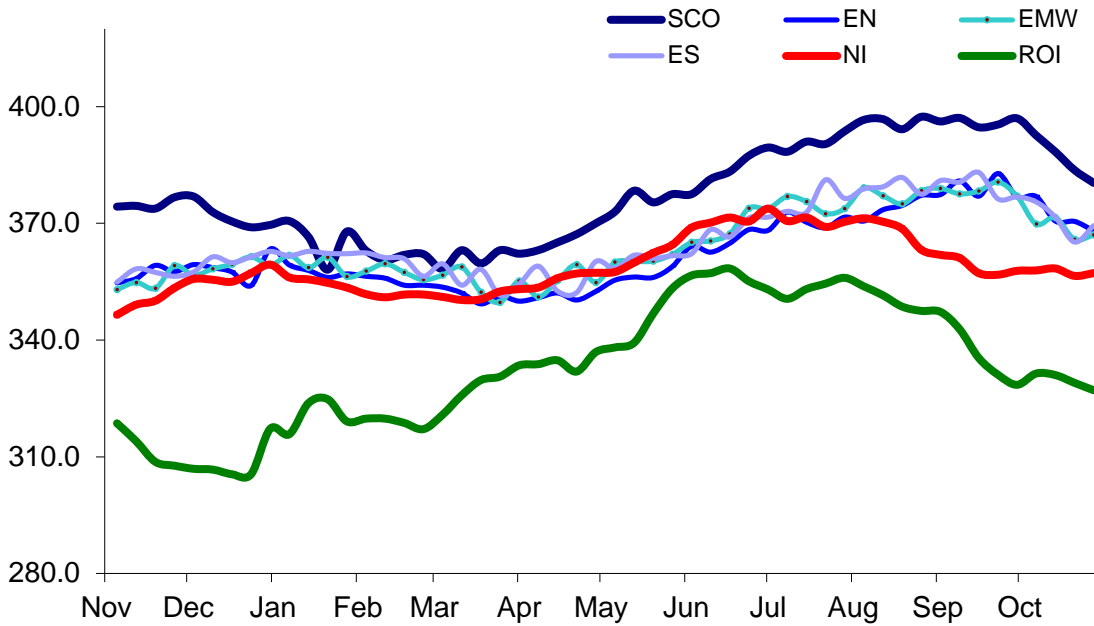
52 Weeks to 28 October 2017



Prices relate to UK Dressing Specification

British Isles R3 Steer Price

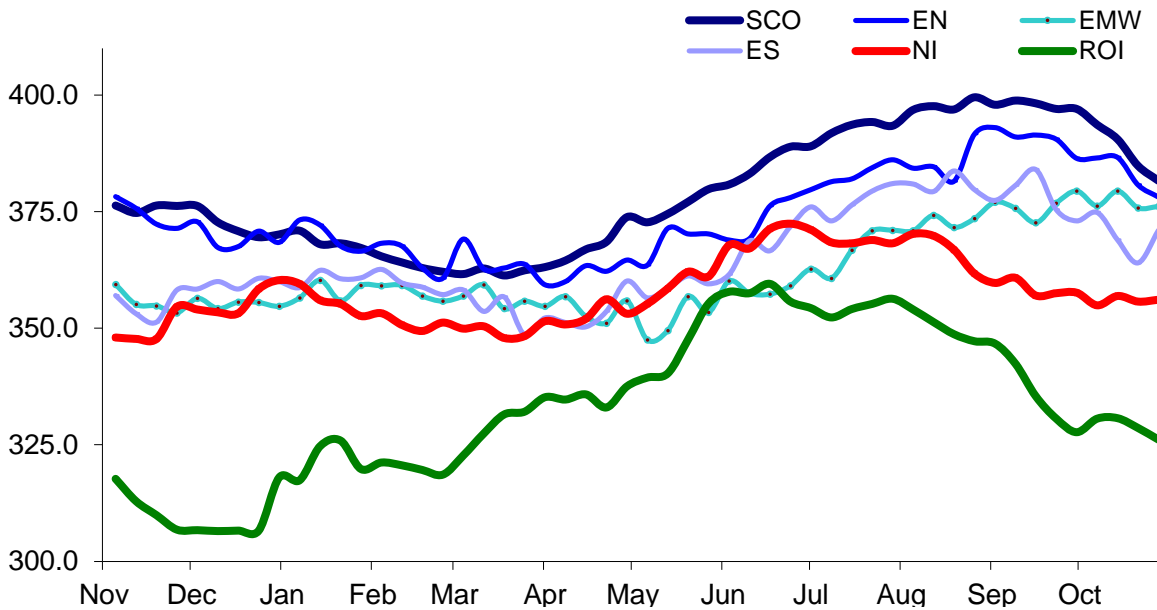
52 Weeks to 28 October 2017



Prices relate to UK Dressing Specification

British Isles R4 Steer Price

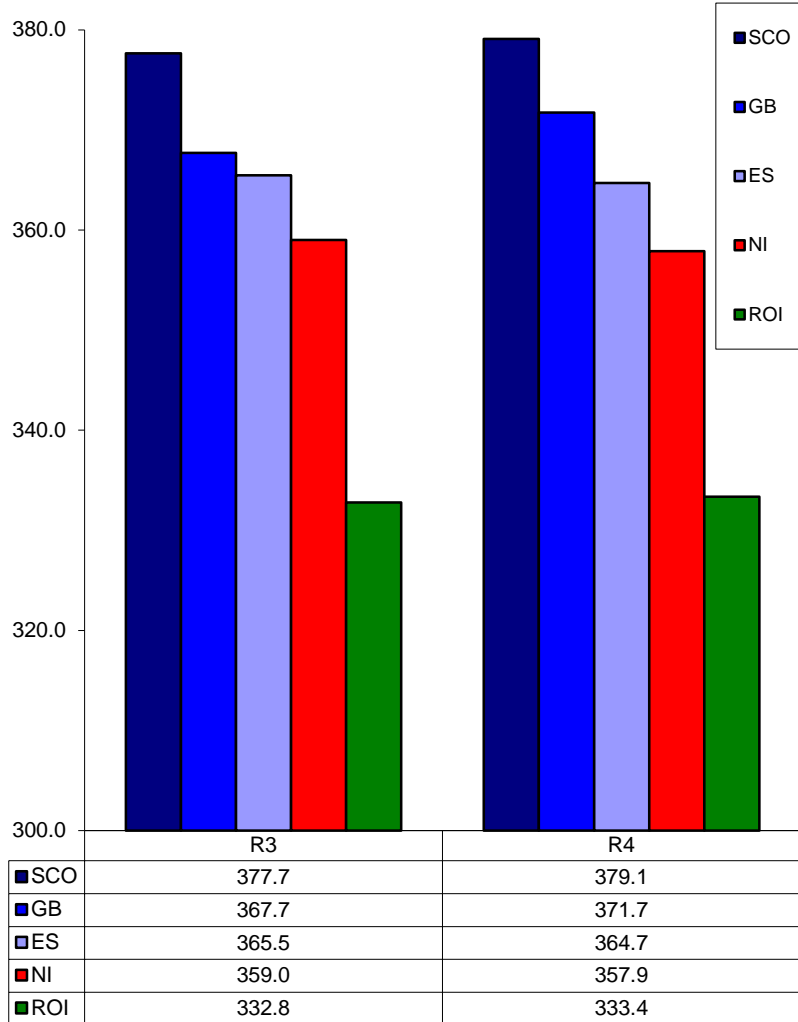
52 Weeks to 28 October 2017



Prices relate to UK Dressing Specification

British Isles Average R3 and R4 Steer price

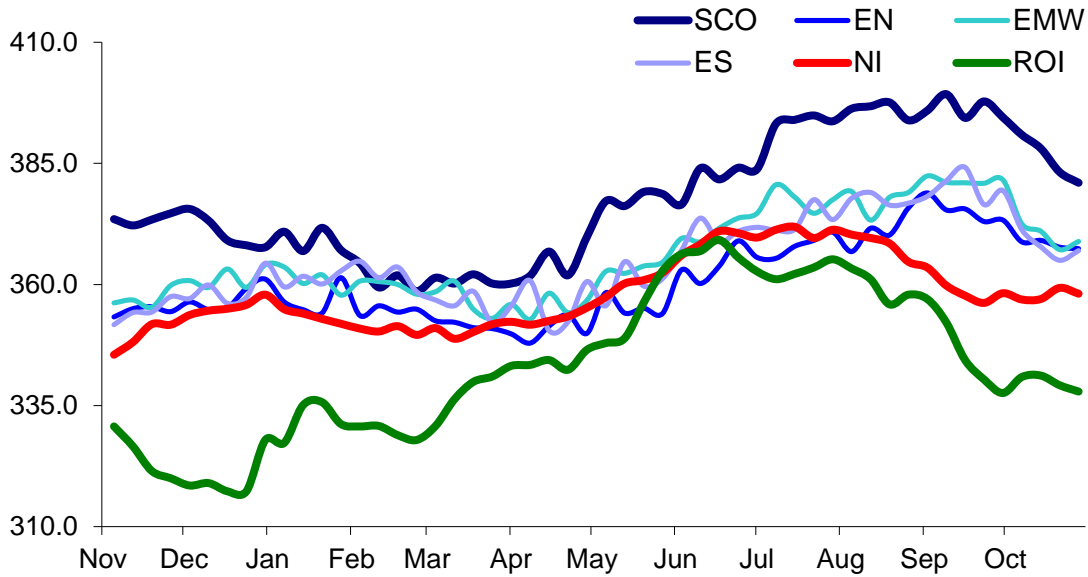
52 Weeks to 28 October 2017



Prices relate to UK Dressing Specification

British Isles R3 Heifer Price

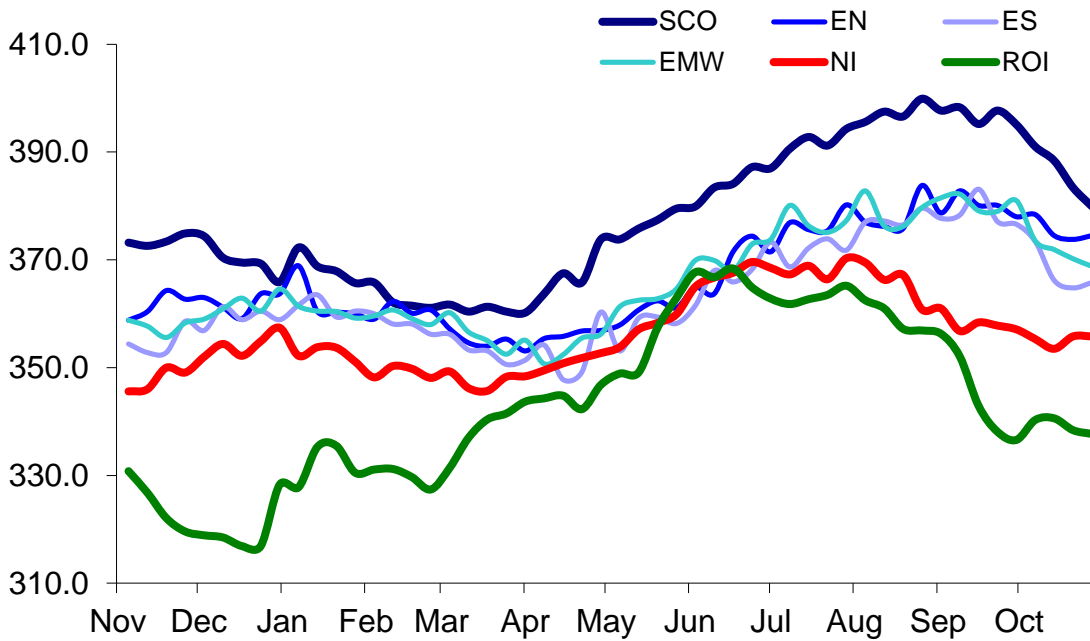
52 Weeks to 28 October 2017



Prices relate to UK Dressing Specification

British Isles R4 Heifer Price

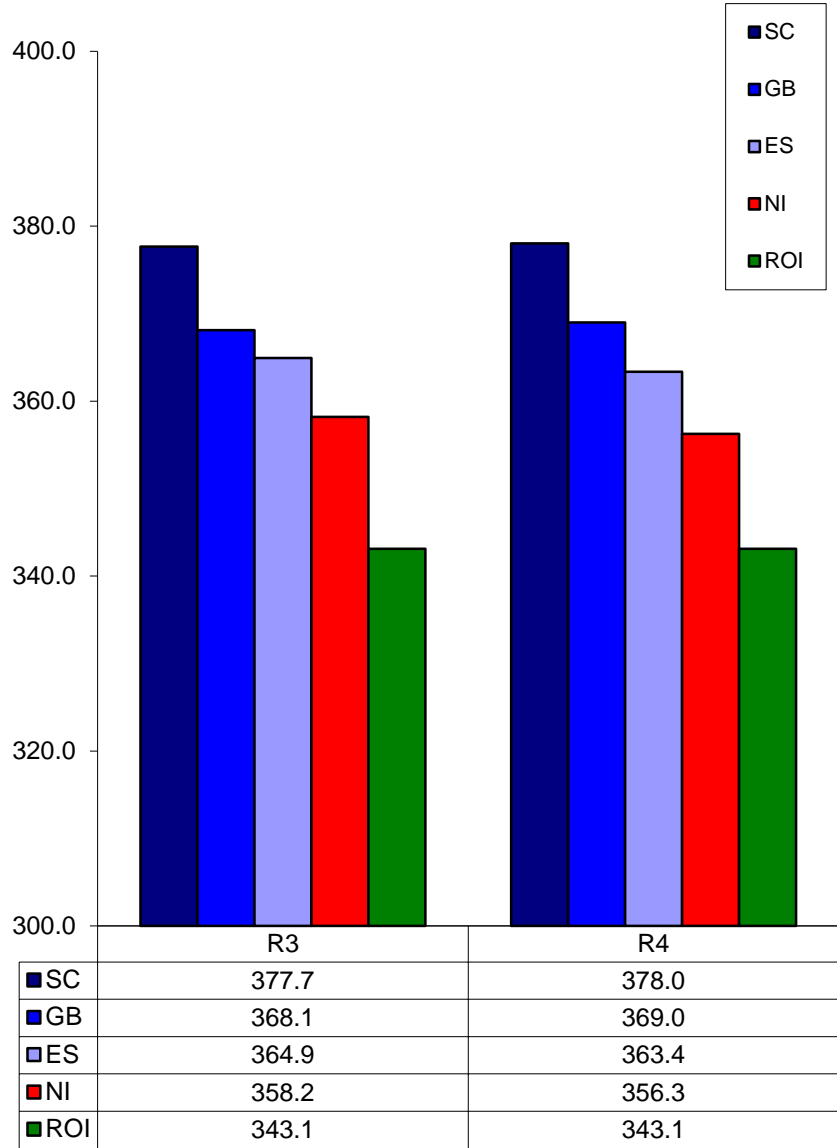
52 Weeks to 28 October 2017



Prices relate to UK Dressing Specification

British Isles Average R3 and R4 Heifer price

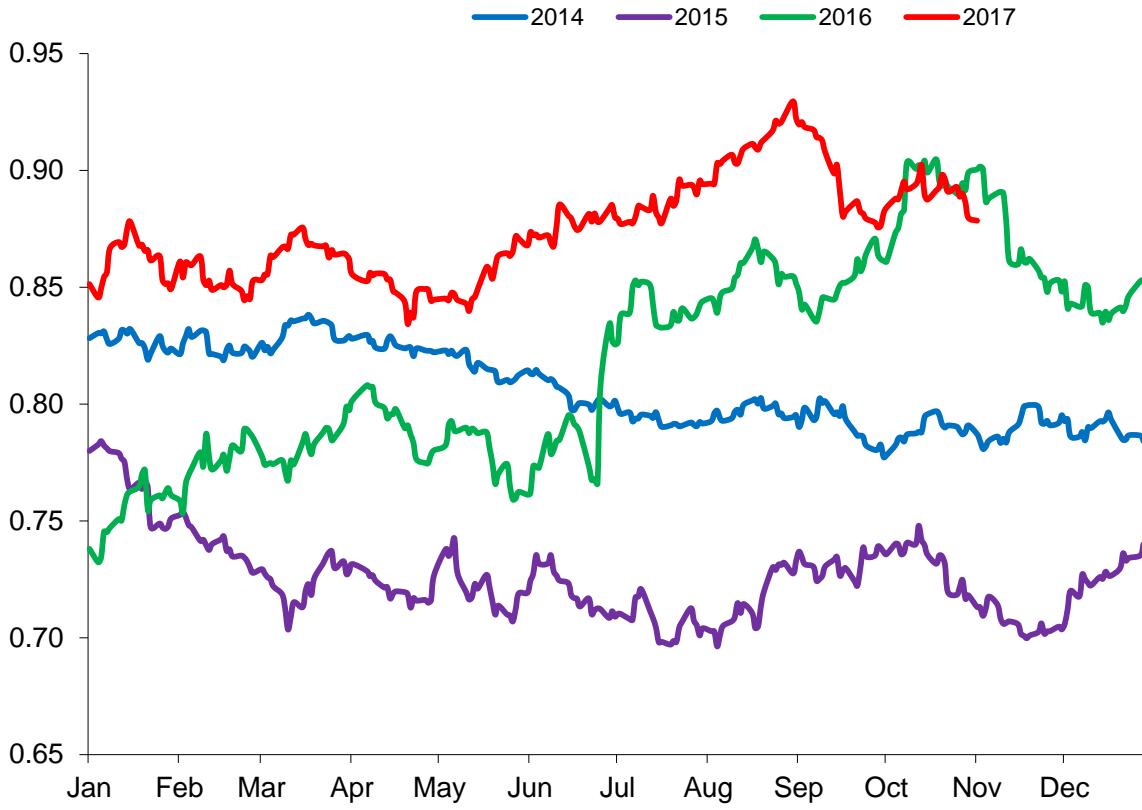
52 Weeks to 28 October 2017



Prices relate to UK Dressing Specification

Exchange Rate £ / Euro

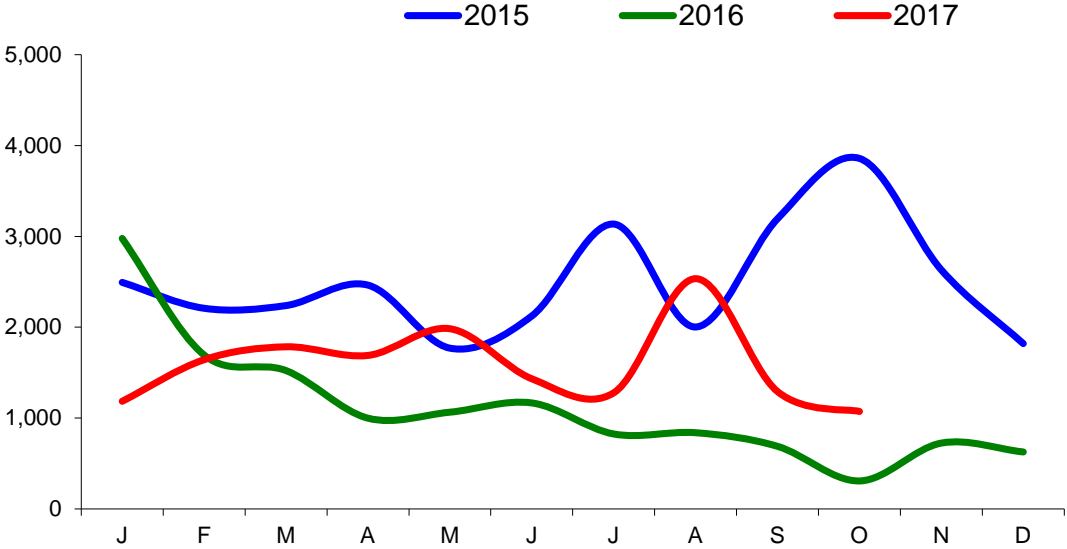
01 January 2014 –31 October 2017



Imports

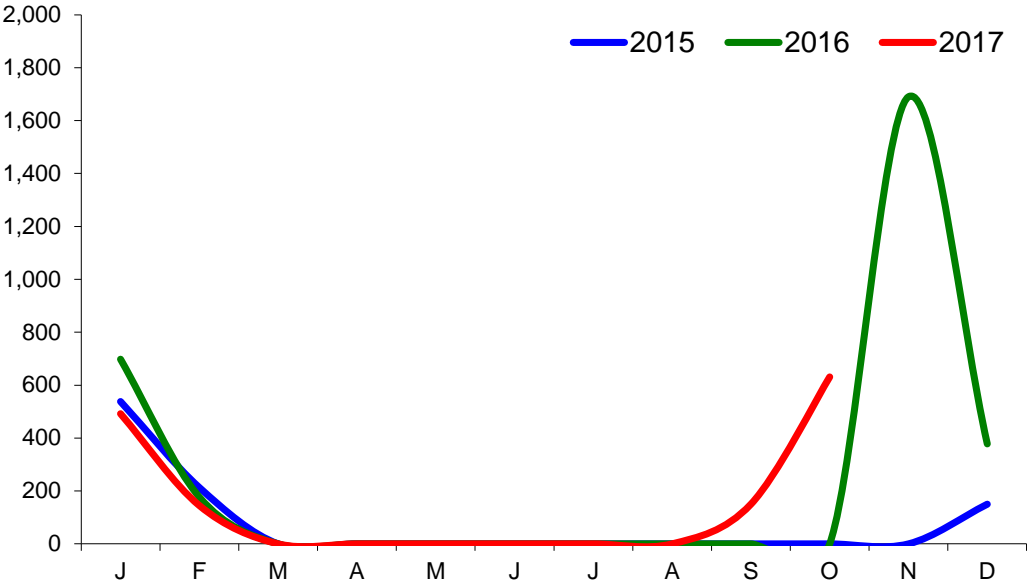
Monthly Live Imports of Cattle into NI for Direct Slaughter

From ROI and GB Combined



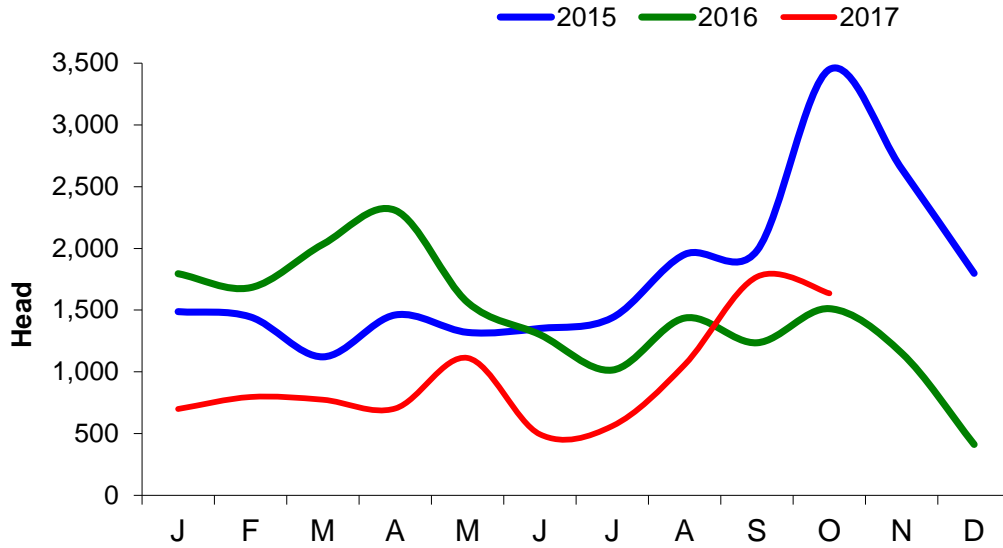
Monthly Live Imports of Sheep into NI for Direct Slaughter

From ROI and GB Combined



Exports

Monthly Live Exports of Cattle from NI into ROI and GB



Monthly Live Exports of Sheep from NI into ROI and GB

