



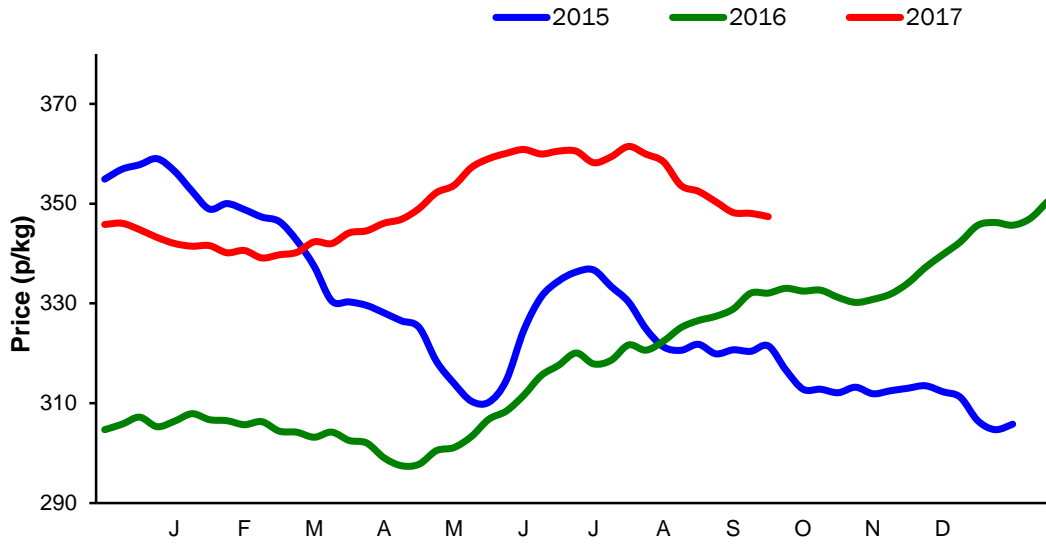
**Monthly Economic Review**  
**September 2017**

## Contents

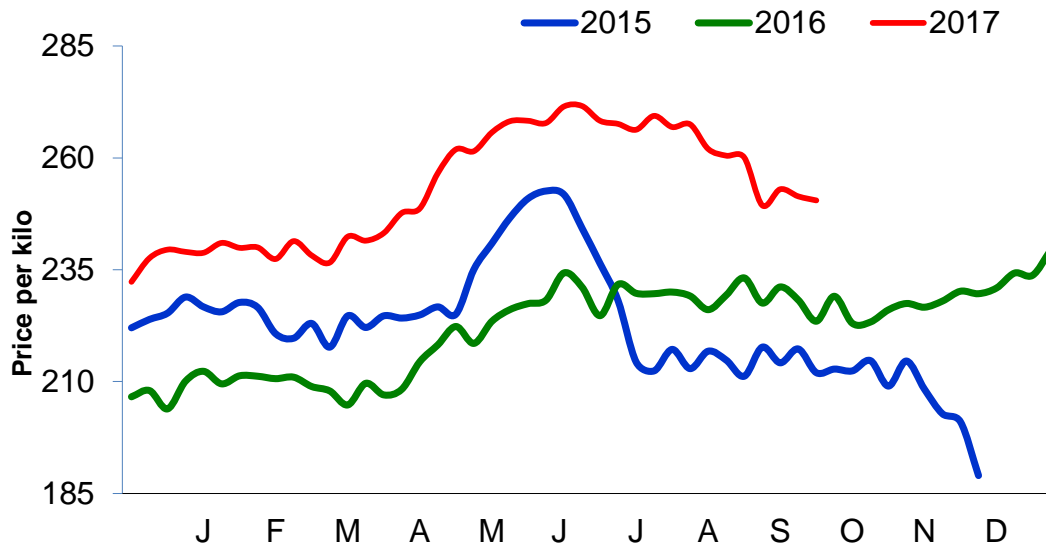
Contents.....	2
Cattle Prices .....	4
Average NI Clean Cattle Price .....	4
Average NI Cow Price.....	4
Cattle Slaughtering.....	5
NI Clean Cattle Slaughtering – Cumulative .....	5
NI Weekly Clean Cattle Slaughtering.....	5
NI Weekly Cow Slaughtering .....	5
Sheep Prices.....	6
Average NI Lamb / Hogget Price .....	6
Sheep Slaughtering.....	7
Cumulative Lamb & Hogget Slaughtering .....	7
Total Weekly Lamb & Hogget Slaughtering .....	7
Total Weekly Ewe and Ram Slaughtering.....	7
Total Carcase Weight Produced for the Food Chain.....	8
Change in Throughput / Production .....	9
Supply and Price.....	10
NI Lamb/Hogget Kill vs. Average Lamb / Hogget Price .....	10
NI Clean Cattle Kill vs. Average Clean Cattle Price.....	10
British Isles Price Comparisons .....	11
UK Average Cow Prices .....	11
Weekly UK Cow Prices .....	11
British Isles R3 Steer Price .....	12
British Isles R4 Steer Price .....	12
British Isles Average R3 and R4 Steer price .....	13
British Isles R3 Heifer Price .....	14
British Isles R4 Heifer Price .....	14
British Isles Average R3 and R4 Heifer price.....	15
Exchange Rate £ / Euro .....	16
Imports.....	17
Monthly Live Imports of Cattle into NI for Direct Slaughter .....	17
Monthly Live Imports of Sheep into NI for Direct Slaughter .....	17
Exports .....	18
Monthly Live Exports of Cattle from NI into RoI and GB.....	18
Monthly live Exports of Sheep from NI into RoI and GB .....	18

Cattle Prices

Average NI Clean Cattle Price

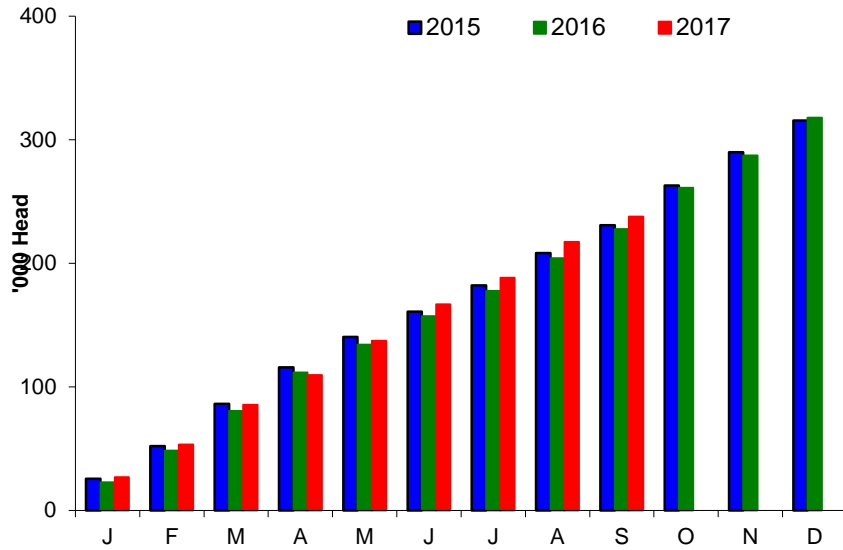


Average NI Cow Price

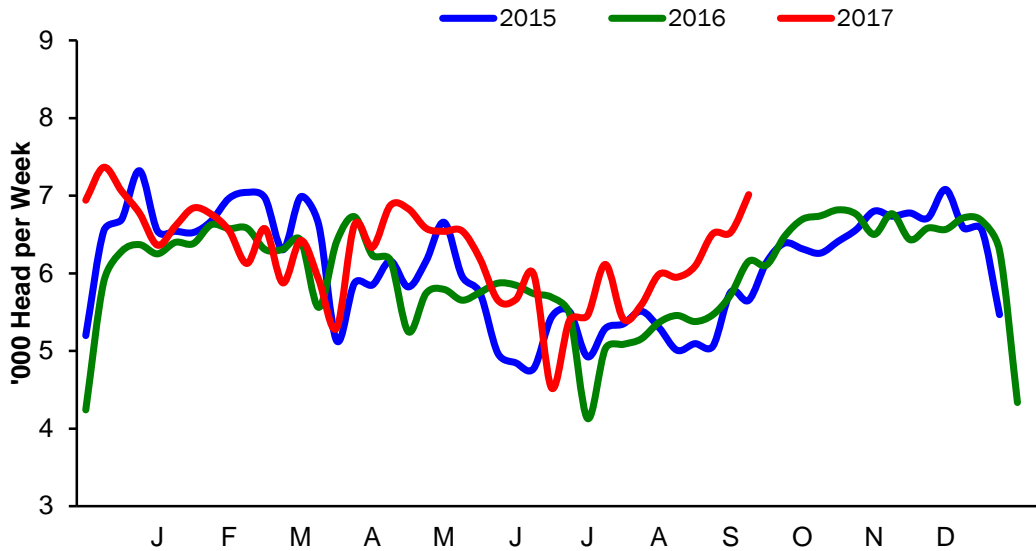


### Cattle Slaughtering

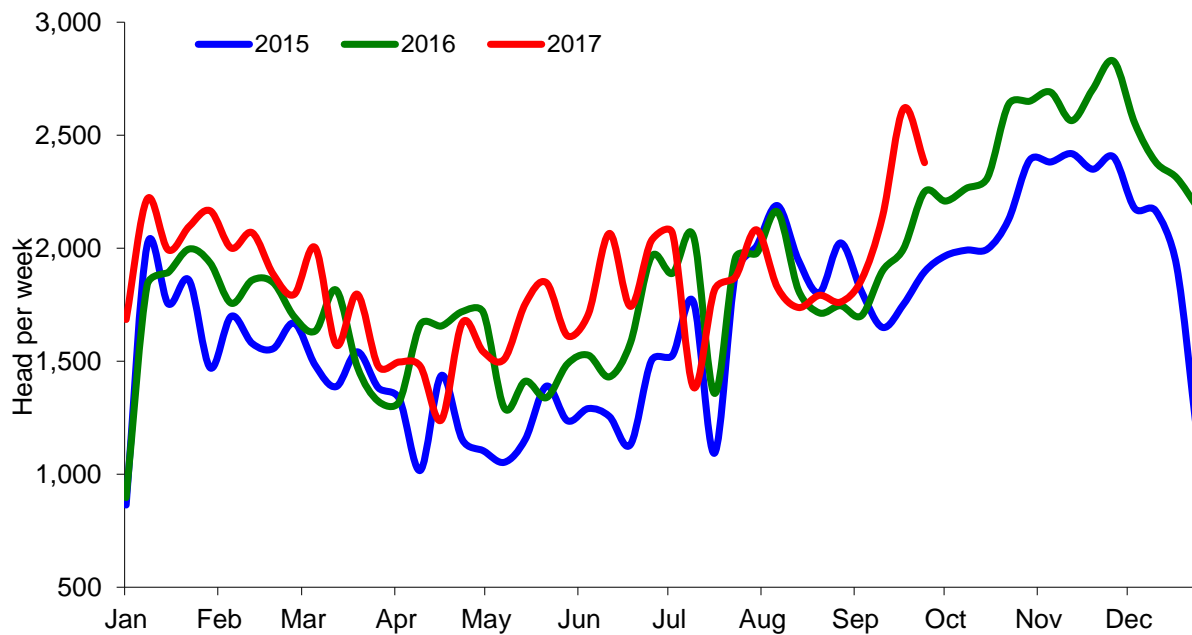
#### NI Clean Cattle Slaughtering – Cumulative



#### NI Weekly Clean Cattle Slaughtering

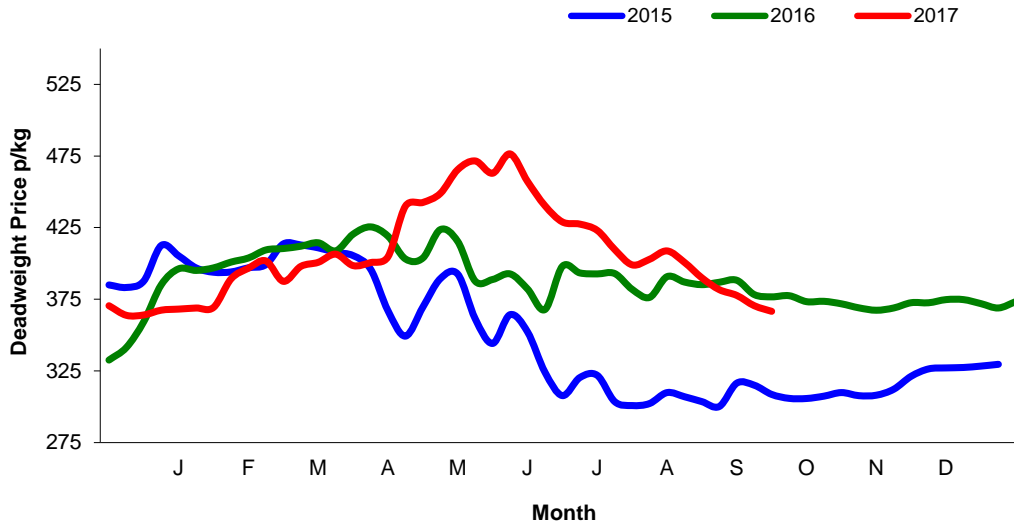


NI Weekly Cow Slaughtering



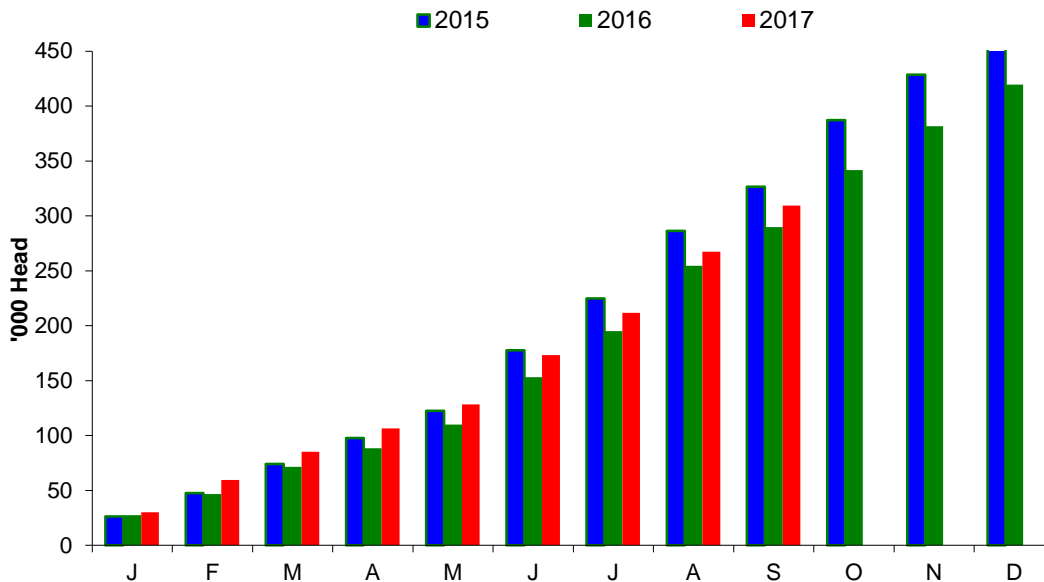
**Sheep Prices**

**Average Deadweight NI Hogget / Lamb Price**

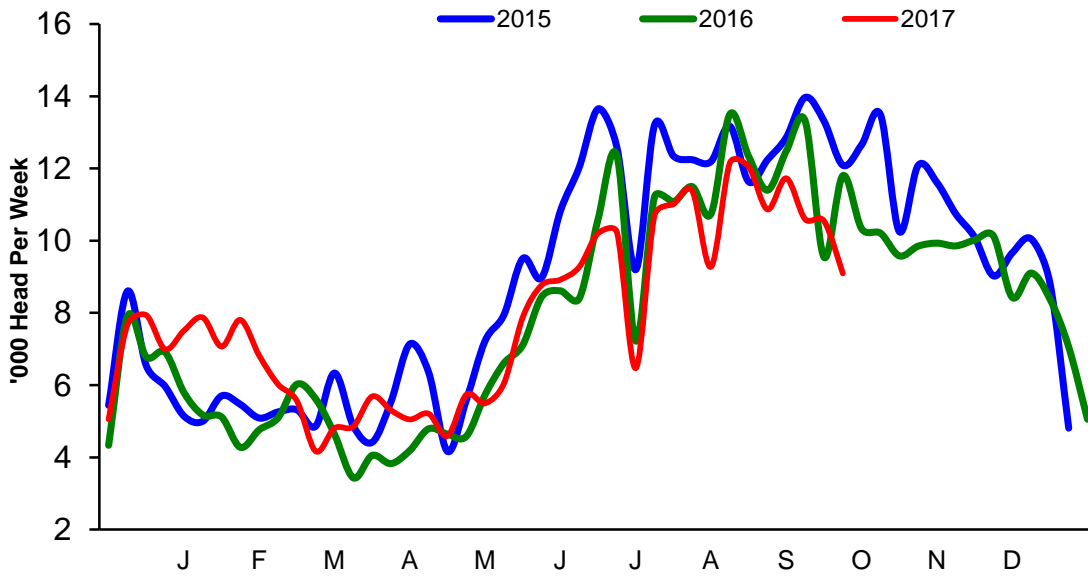


**Sheep Slaughterings**

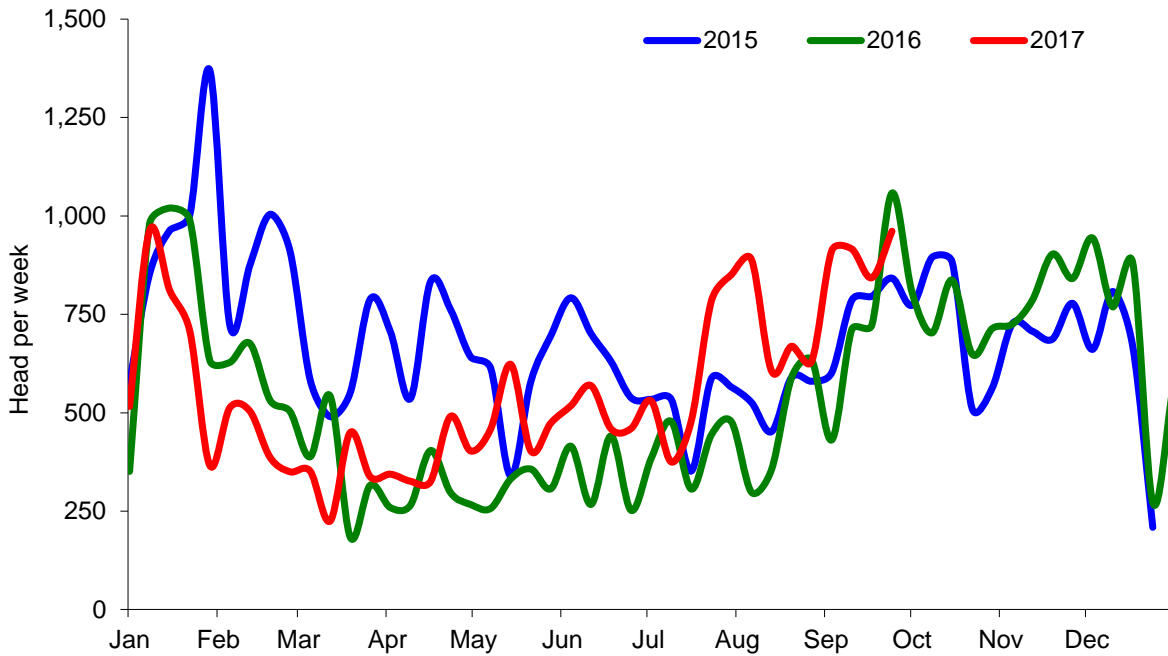
**Cumulative Lamb & Hogget Slaughterings**



### Total Weekly Lamb & Hogget Slaughtering



### Total Weekly Ewe and Ram Slaughtering



**Market Information September 2017**  
**Page 8**

<b>NI CATTLE AND SHEEP SLAUGHTERINGS FOR THE FOODCHAIN</b>						
	<b>September</b>			<b>Year to Date</b>		
	<b>(4 weeks ended 30/09/17)</b>			<b>(26 weeks ended 30/09/17)</b>		
	<b>Sep-16</b>	<b>Sep-17</b>	<b>% Change</b>	<b>2016</b>	<b>2017</b>	<b>Change</b>
<b>CATTLE</b>						
Steers	13,767	14,585	+6%	74,905	79,202	+6%
Heifers	8,312	8,868	+7%	52,234	58,070	+11%
Young Bulls / Calves	2,386	2,691	+13%	20,757	20,762	+0%
<b>Total Prime Cattle</b>	<b>24,465</b>	<b>26,144</b>	<b>+7%</b>	<b>147,896</b>	<b>158,034</b>	<b>+7%</b>
Calves	579	618	+7%	3,595	2,828	-21%
Cows	8,357	8,999	+8%	45,518	47,045	+3%
Mature Bulls	403	374	-7%	2,206	1,956	-11%
<b>Total Cattle</b>	<b>33,804</b>	<b>36,135</b>	<b>+7%</b>	<b>199,215</b>	<b>209,863</b>	<b>+5%</b>
<b>SHEEP</b>						
Lambs & Hoggets	47,145	41,964	-11%	230,087	224,288	-3%
Ewes & Rams	3,299	3,632	+10%	11,558	15,301	+32%
<b>Total Sheep</b>	<b>50,444</b>	<b>45,596</b>	<b>-10%</b>	<b>241,645</b>	<b>239,589</b>	<b>-1%</b>
The above figures are provisional; any amendments will be incorporated in the cumulative data (source DAERA).						

<b>NI BEEF AND SHEEPMEAT PRODUCTION - FOODCHAIN</b>						
	<b>September</b>			<b>Year to Date</b>		
	<b>(4 weeks ended 30/09/17)</b>			<b>(26 weeks ended 30/09/17)</b>		
	<b>Sep-16</b>	<b>Sep-17</b>	<b>% Change</b>	<b>2016</b>	<b>2017</b>	<b>Change</b>
<b>BEEF</b>						
Steers	4,852	5,094	+5%	26,483	27,558	+4%
Heifers	2,616	2,800	+7%	16,550	18,207	+10%
Young Bulls	780	922	+18%	6,855	6,950	+1%
<b>Total Prime Beef</b>	<b>8,248</b>	<b>8,817</b>	<b>+7%</b>	<b>49,889</b>	<b>52,715</b>	<b>+6%</b>
Calves	124	117	-6%	764	527	-31%
Cows	2,421	2,614	+8%	13,770	14,033	+2%
Mature Bulls	192	158	-18%	1,007	870	-14%
<b>Total Beef</b>	<b>10,985</b>	<b>11,705</b>	<b>+7%</b>	<b>65,431</b>	<b>68,147</b>	<b>+4%</b>
<b>SHEEPMEAT</b>						
Lambs & Hoggets	982	913	-7%	4,828	4,802	-1%
Ewes & Rams	92	97	+6%	337	436	+29%
<b>Total Sheepmeat</b>	<b>1,074</b>	<b>1,010</b>	<b>-6%</b>	<b>5,165</b>	<b>5,238</b>	<b>+1%</b>
The above figures are provisional; any amendments will be incorporated in the cumulative data (source DAERA).						



**Market Information September 2017**  
**Page 9**

**Total Carcase Weight Produced for the Food Chain**  
**Year-to-Date (tonnes – t.)**

Month	Prime Cattle		Cows & Bulls		Lambs/Hoggets		Ewes & Rams	
	2016	2017	2016	2017	2016	2017	2016	2017
January	8,471	9,001	2,489	2,527	599	675	98	82
February	8,906	8,854	2,334	2,581	422	666	61	50
March	10,704	10,578	2,466	2,695	551	582	47	49
April	8,617	8,019	2,188	1,850	367	475	37	45
May	9,529	11,014	2,369	2,670	619	642	50	70
June	7,837	8,027	2,286	2,424	762	773	41	60
July	6,644	7,106	2,407	2,274	868	797	51	61
August	9,014	9,732	2,715	2,726	1,230	1,199	66	103
September	8,248	8,817	2,421	2,614	982	913	92	97
October								
November								
December								
<b>Total</b>	<b>77,970</b>	<b>81,149</b>	<b>21,674</b>	<b>22,362</b>	<b>6,399</b>	<b>6,723</b>	<b>543</b>	<b>617</b>
<b>Change (t.)</b>	<b>3,178</b>		<b>688</b>		<b>324</b>		<b>74</b>	
<b>% Change</b>	<b>4.08%</b>		<b>3.18%</b>		<b>5.06%</b>		<b>13.61%</b>	

*\*excludes calves*

**Change in Throughput / Production**

**Last 4 weeks 2016/2017**

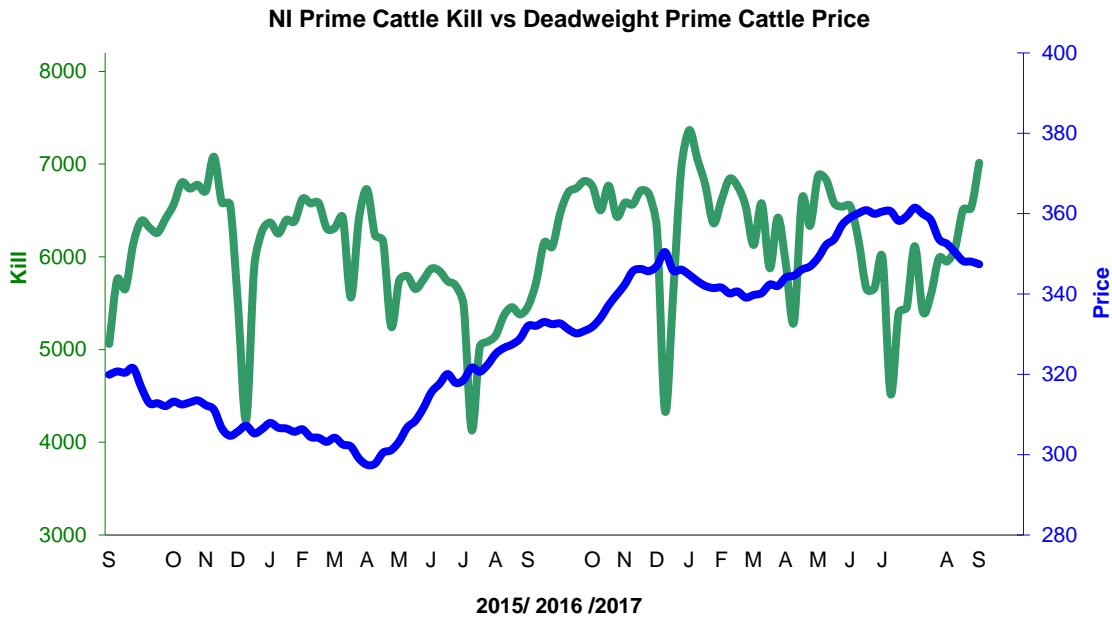
**Change in Throughput / Production 2016/2017**

**September**

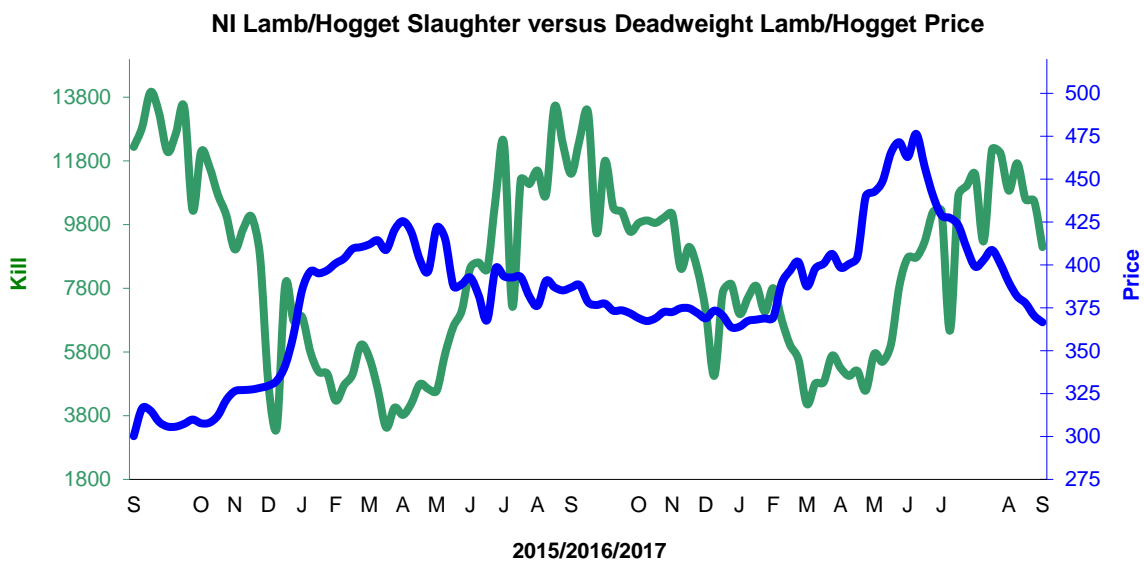
2016/2017	Number	Tonnage	ACW Kg
Prime	6.9%	6.9%	-0.07
Cows	7.7%	8.0%	2.15
<b>Total</b>	<b>6.9%</b>	<b>6.6%</b>	<b>-1.05</b>
Lamb	-11.0%	-7.0%	0.93
Ewes and Rams	10.1%	6.3%	-0.96
<b>Total Sheep</b>	<b>-9.6%</b>	<b>-5.9%</b>	<b>0.86</b>

**Supply and Price**

**NI Clean Cattle Kill vs. Average Clean Cattle Price**



**NI Lamb/Hogget Kill vs. Average Lamb / Hogget Price**

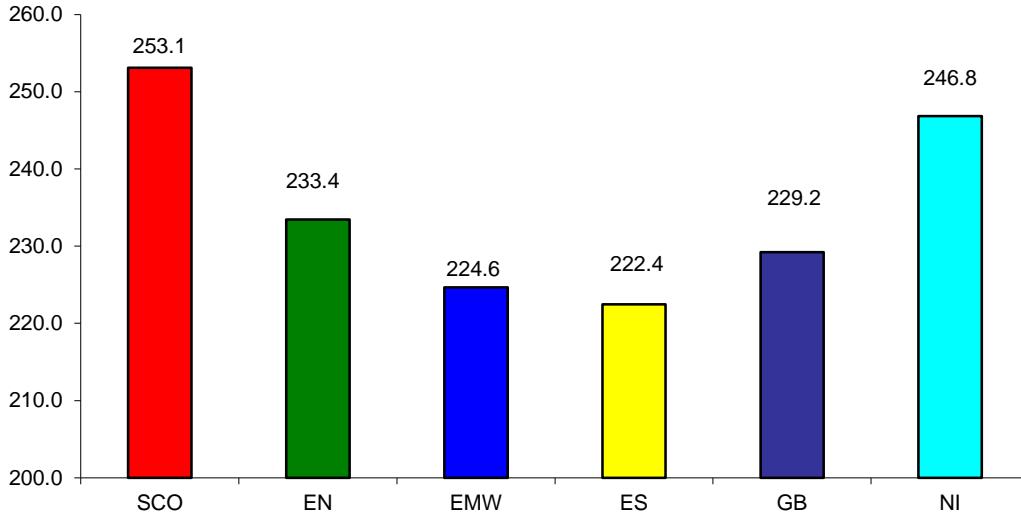


Green	Supply (Kill)
Blue	Price

**BRITISH ISLES COMPARISONS**

**UK Average Cow Prices**

**52 Weeks to 30 September 2017**

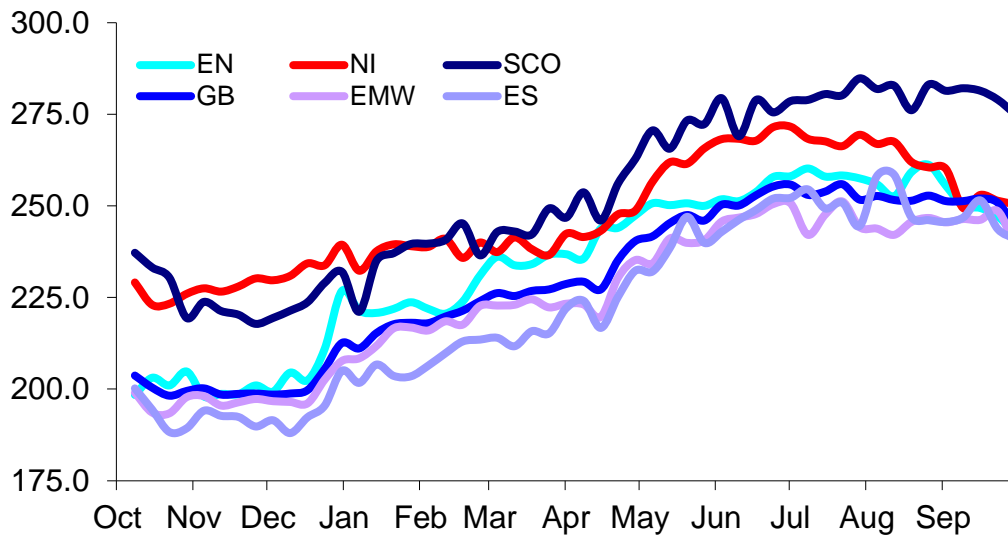


SCO	Scotland
EN	England North
EMW	England Midlands and Wales
ES	England South
NI	Northern Ireland
GB	Great Britain

Prices relate to UK Dressing Specification

**Weekly UK Cow Prices**

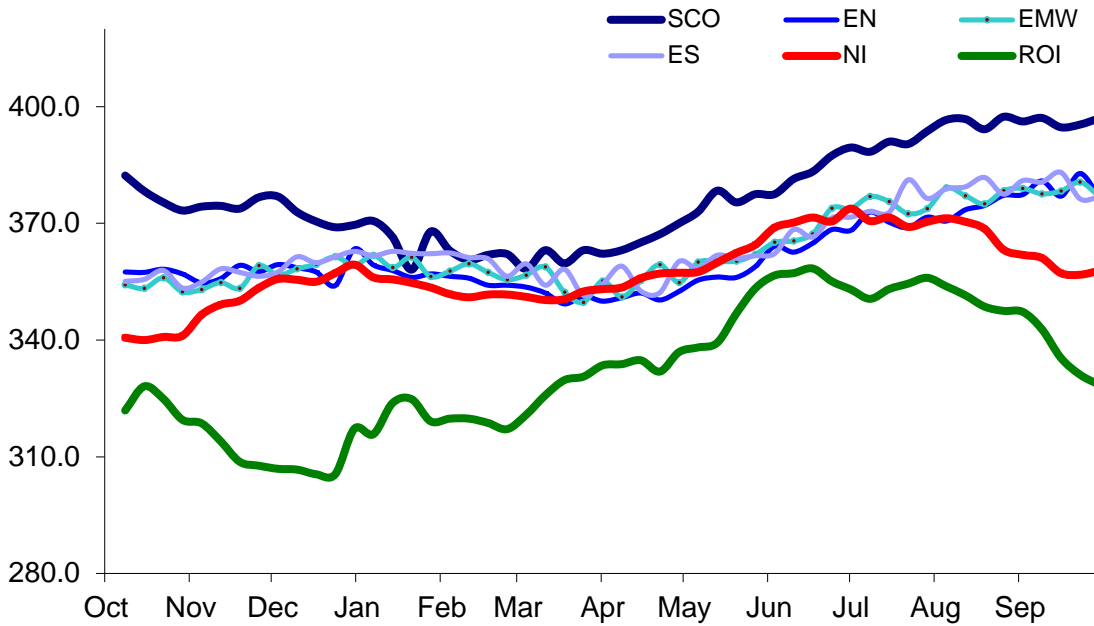
**52 Weeks to 30 September 2017**



Prices relate to UK Dressing Specification

British Isles R3 Steer Price

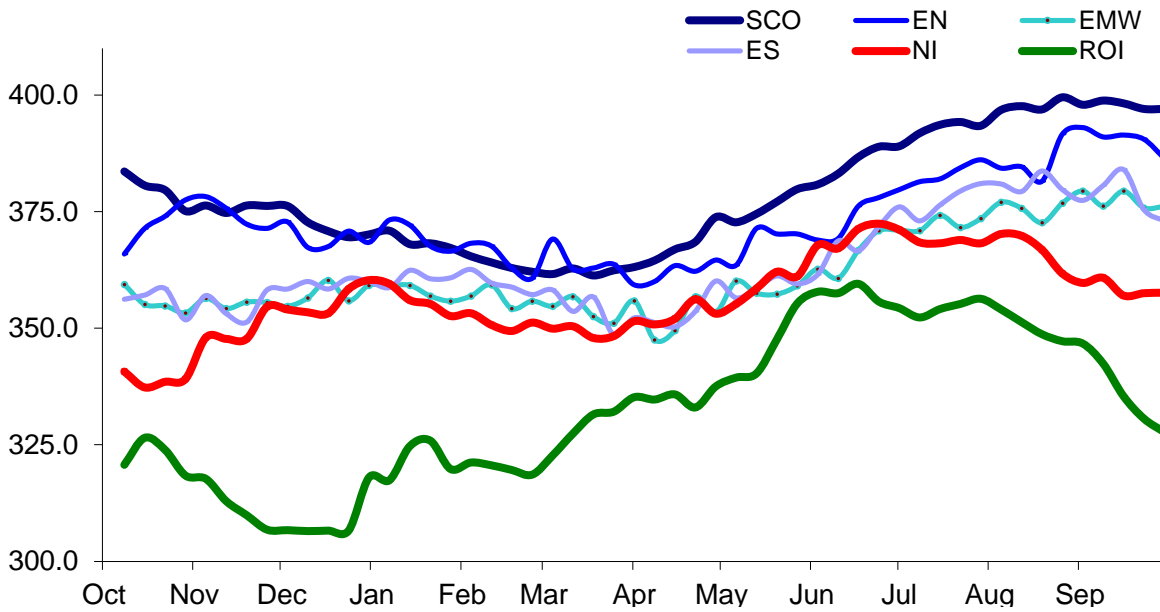
52 Weeks to 30 September 2017



Prices relate to UK Dressing Specification

British Isles R4 Steer Price

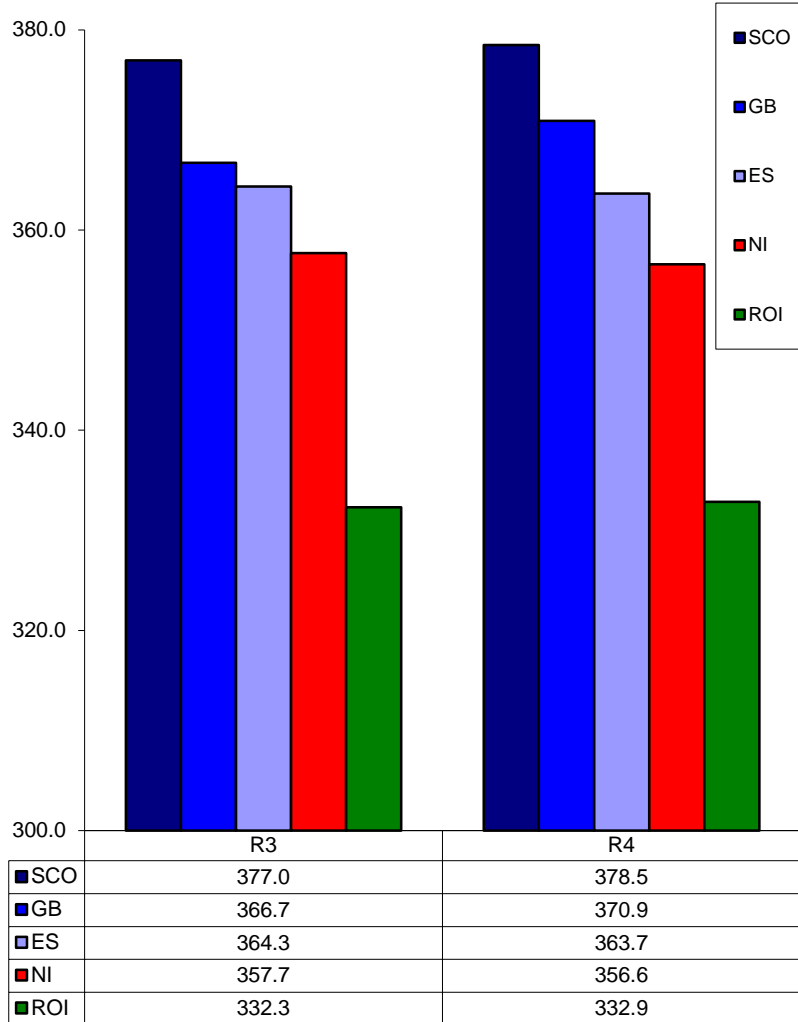
52 Weeks to 30 September 2017



Prices relate to UK Dressing Specification

**British Isles Average R3 and R4 Steer price**

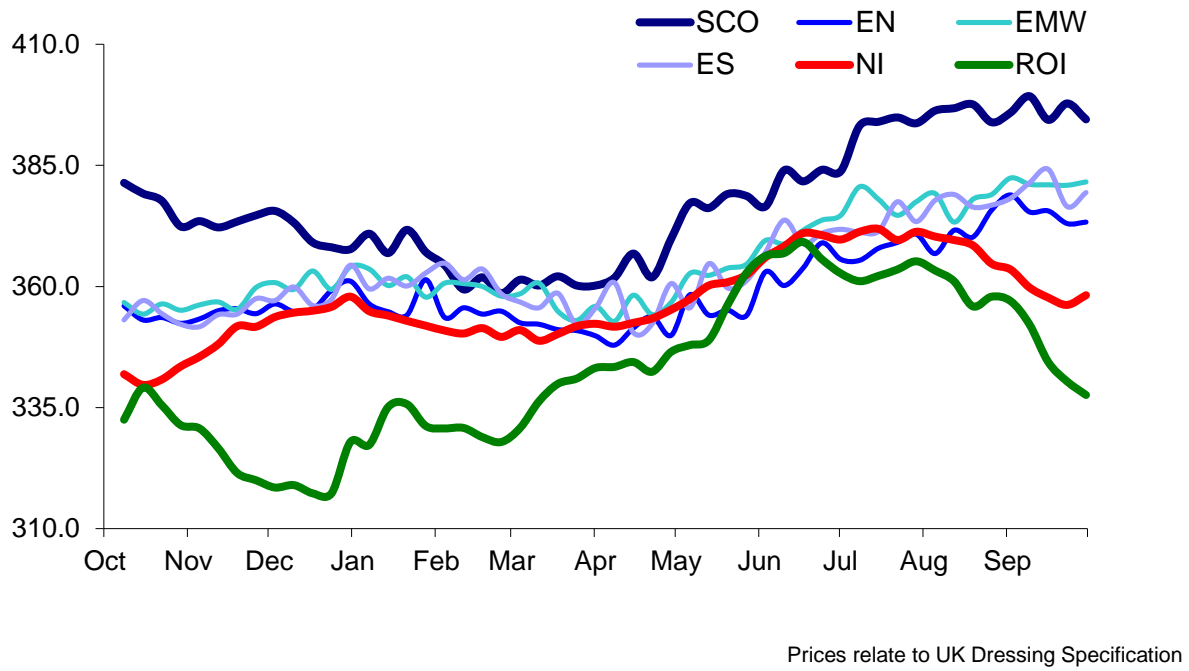
**52 Weeks to 30 September 2017**



Prices relate to UK Dressing Specification

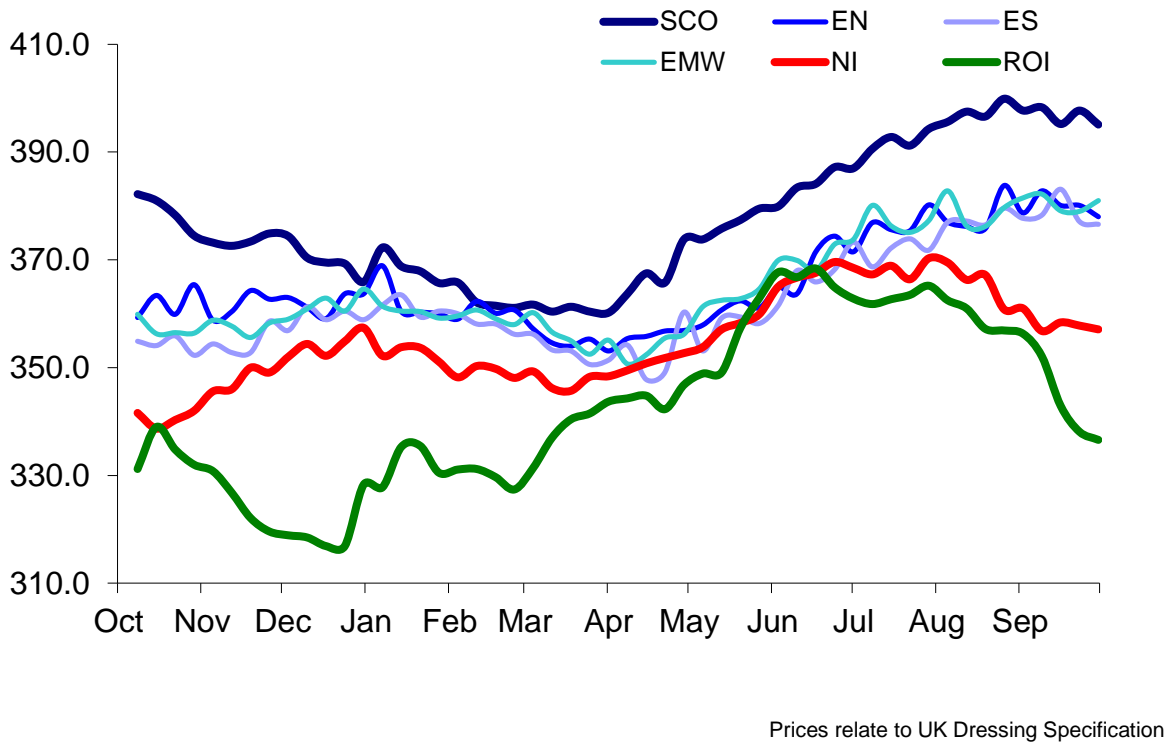
British Isles R3 Heifer Price

52 Weeks to 30 September 2017



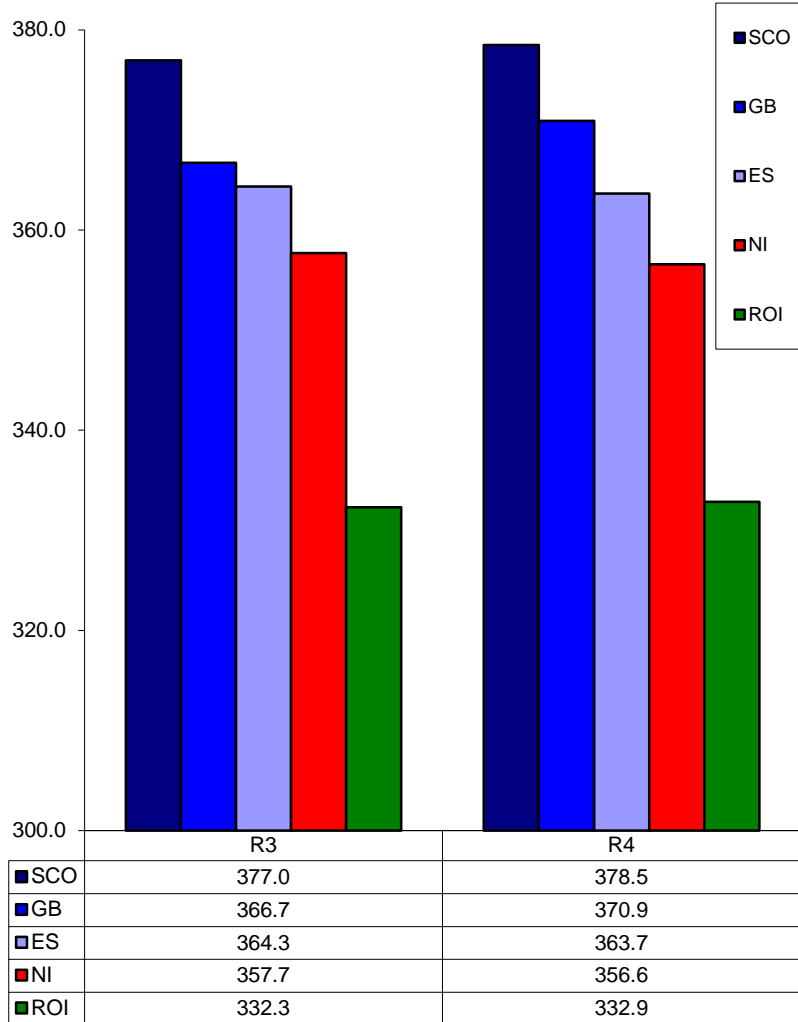
British Isles R4 Heifer Price

52 Weeks to 30 September 2017



**British Isles Average R3 and R4 Heifer price**

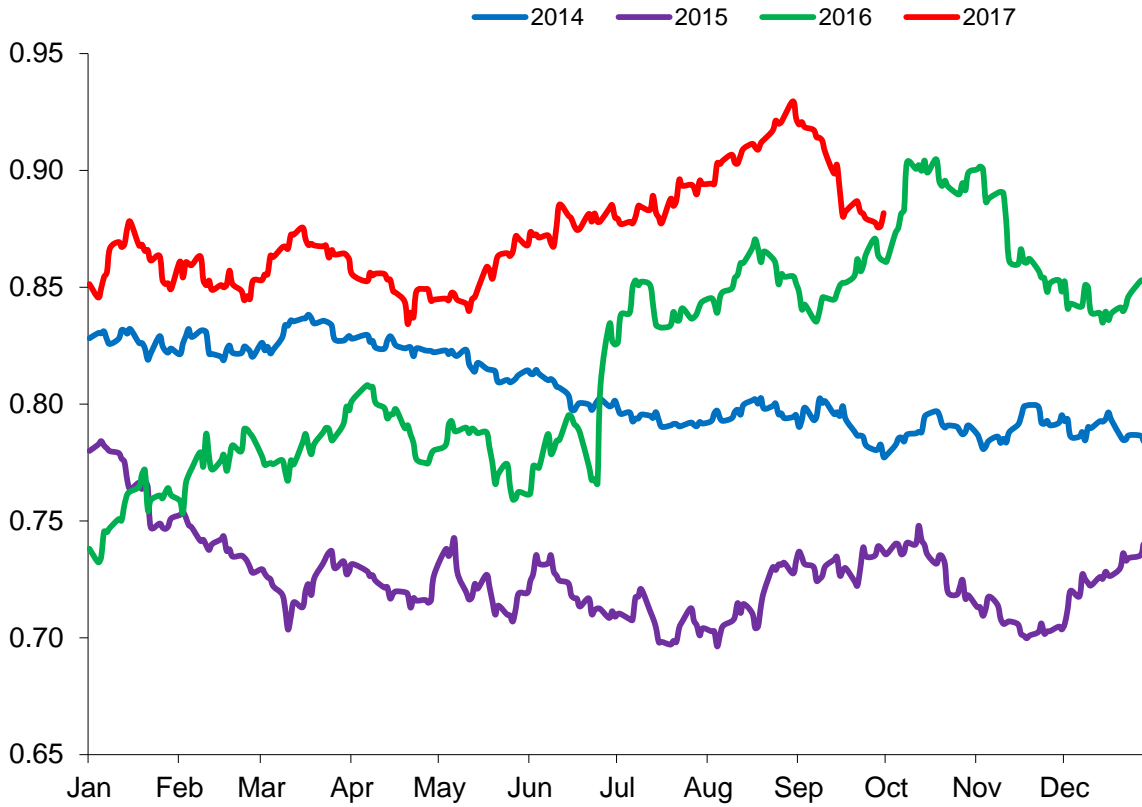
**52 Weeks to 30 September 2017**



Prices relate to UK Dressing Specification

Exchange Rate £ / Euro

01 January 2014 –30 September 2017

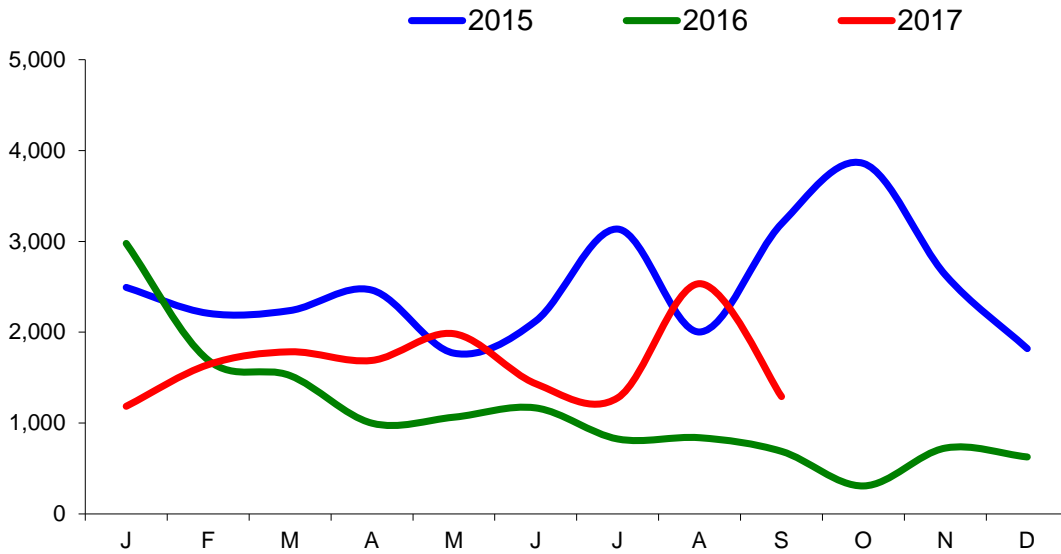




Imports

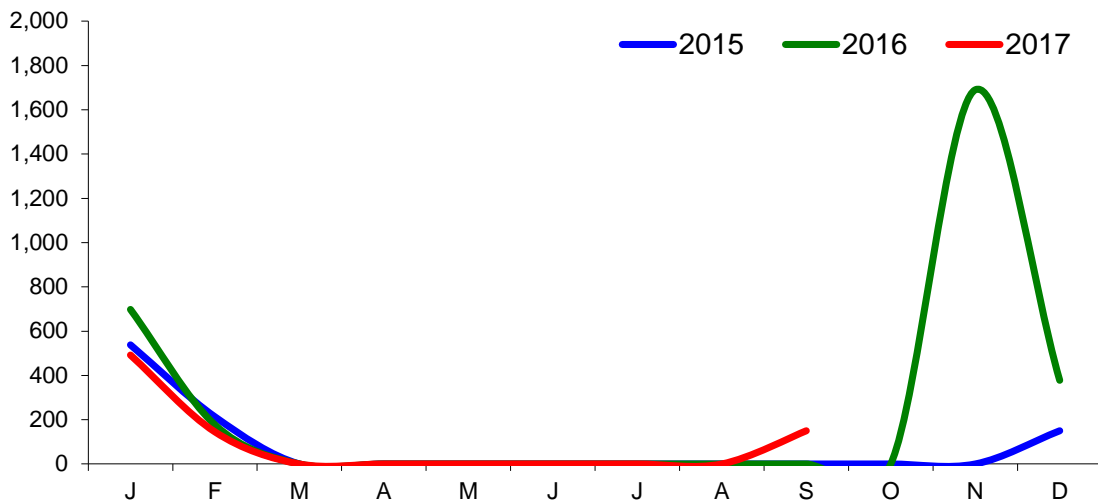
Monthly Live Imports of Cattle into NI for Direct Slaughter

From ROI and GB Combined



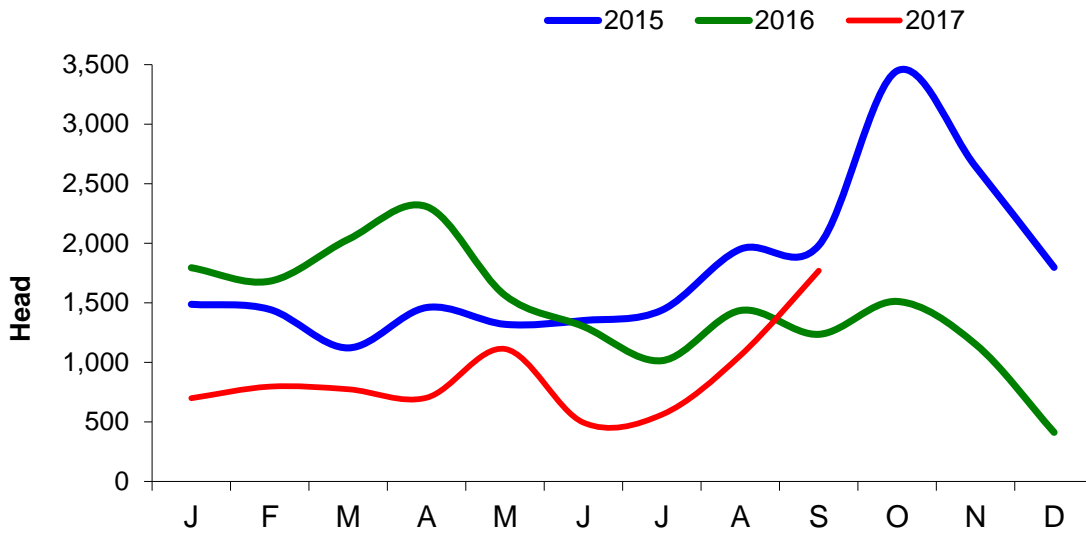
Monthly Live Imports of Sheep into NI for Direct Slaughter

From ROI and GB Combined



Exports

Monthly Live Exports of Cattle from NI into ROI and GB



Monthly Live Exports of Sheep from NI into ROI and GB

