



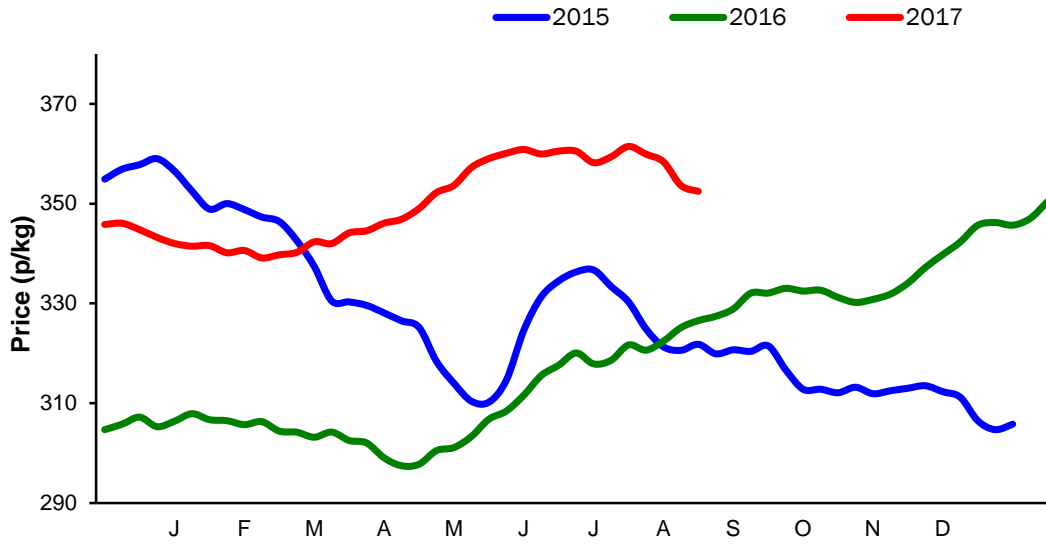
**Monthly Economic Review**  
**August 2017**

## Contents

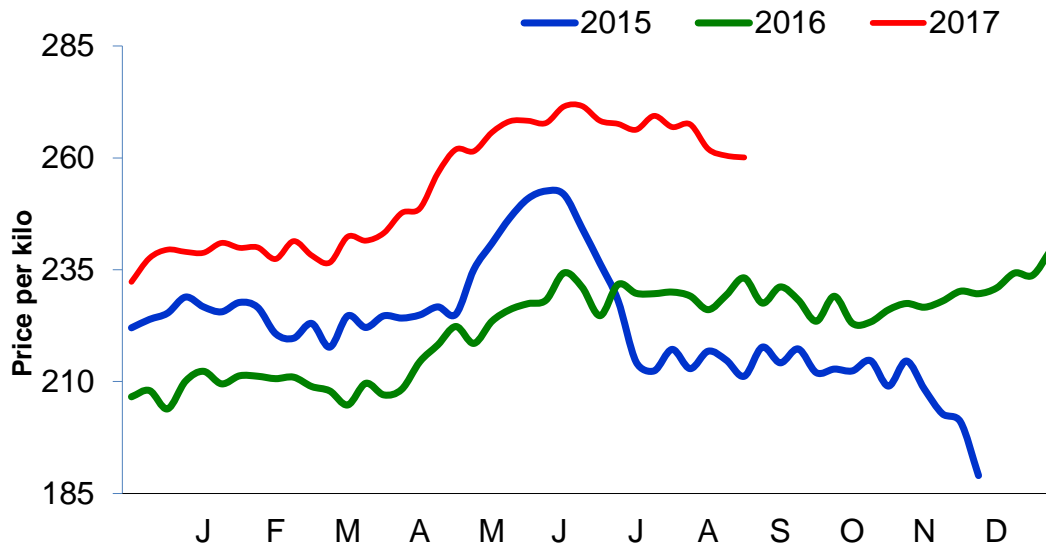
|   |    |
|---|----|
| Contents.....   | 2  |
| Cattle Prices .....   | 4  |
| Average NI Clean Cattle Price .....                               | 4  |
| Average NI Cow Price.....   | 4  |
| Cattle Slaughtering.....  | 5  |
| NI Clean Cattle Slaughtering – Cumulative .....                   | 5  |
| NI Weekly Clean Cattle Slaughtering.....                          | 5  |
| NI Weekly Cow Slaughtering .....                                  | 5  |
| Sheep Prices.....   | 6  |
| Average NI Lamb / Hogget Price .....                              | 6  |
| Sheep Slaughtering.....   | 7  |
| Cumulative Lamb & Hogget Slaughtering .....                       | 7  |
| Total Weekly Lamb & Hogget Slaughtering .....                     | 7  |
| Total Weekly Ewe and Ram Slaughtering.....                        | 7  |
| Total Carcase Weight Produced for the Food Chain.....             | 8  |
| Change in Throughput / Production .....                           | 9  |
| Supply and Price.....   | 10 |
| NI Lamb/Hogget Kill vs. Average Lamb / Hogget Price .....         | 10 |
| NI Clean Cattle Kill vs. Average Clean Cattle Price.....          | 10 |
| British Isles Price Comparisons .....                             | 11 |
| UK Average Cow Prices .....                                       | 11 |
| Weekly UK Cow Prices .....  | 11 |
| British Isles R3 Steer Price .....                                | 12 |
| British Isles R4 Steer Price .....                                | 12 |
| British Isles Average R3 and R4 Steer price .....                 | 13 |
| British Isles R3 Heifer Price .....                               | 14 |
| British Isles R4 Heifer Price .....                               | 14 |
| British Isles Average R3 and R4 Heifer price.....                 | 15 |
| Exchange Rate £ / Euro .....                                      | 16 |
| Imports.....  | 17 |
| Monthly Live Imports of Cattle into NI for Direct Slaughter ..... | 17 |
| Monthly Live Imports of Sheep into NI for Direct Slaughter .....  | 17 |
| Exports .....   | 18 |
| Monthly Live Exports of Cattle from NI into RoI and GB.....       | 18 |
| Monthly live Exports of Sheep from NI into RoI and GB .....       | 18 |

Cattle Prices

Average NI Clean Cattle Price

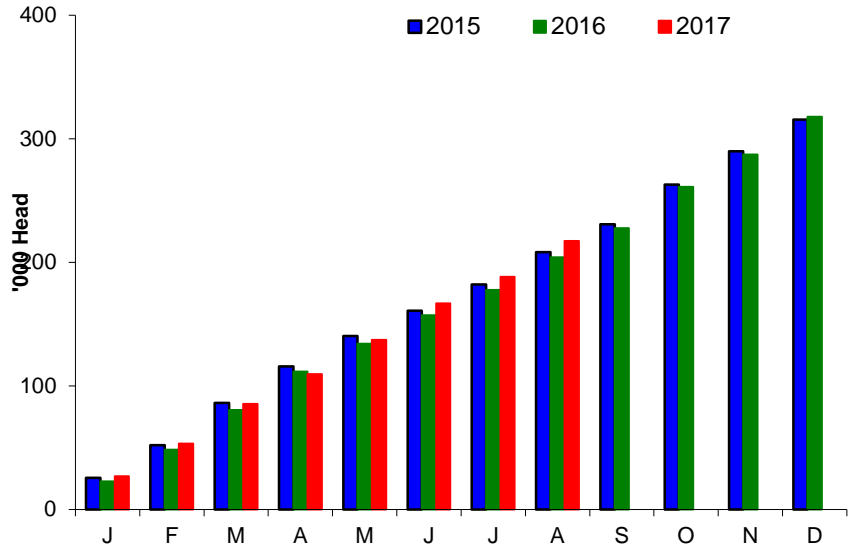


Average NI Cow Price

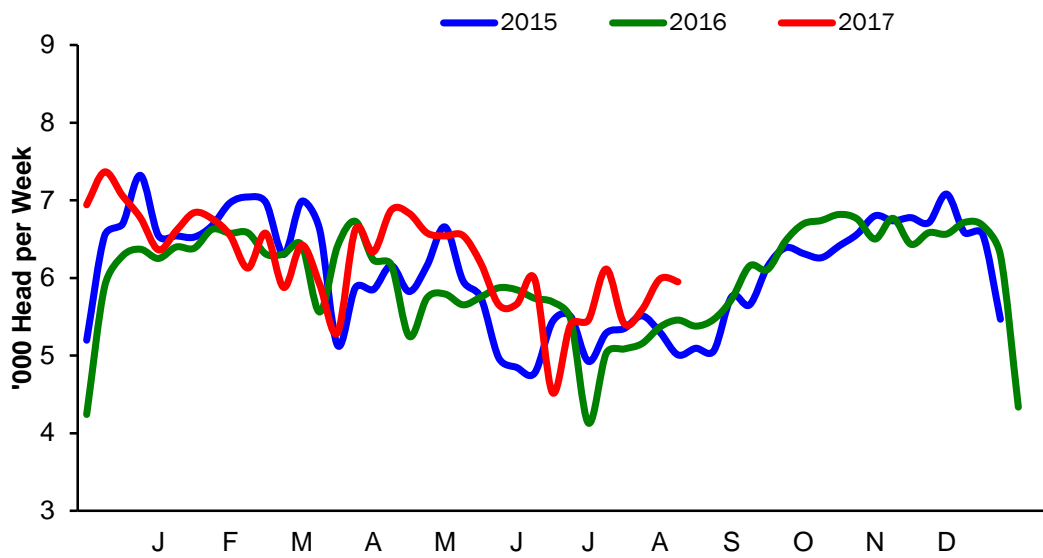


### Cattle Slaughtering

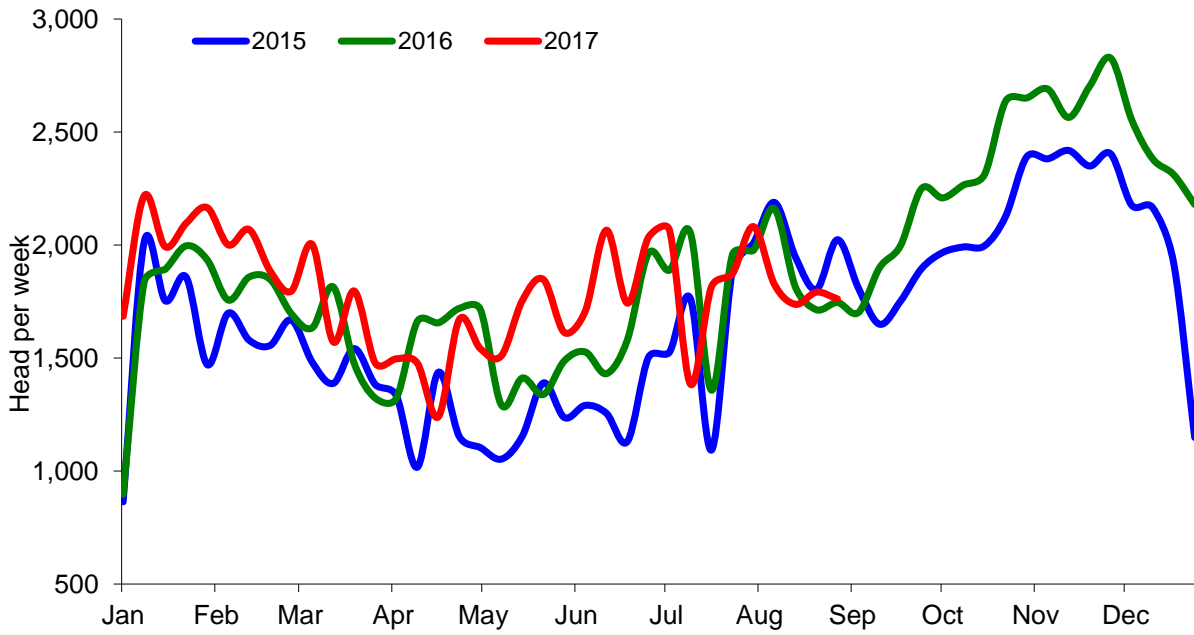
#### NI Clean Cattle Slaughtering – Cumulative



#### NI Weekly Clean Cattle Slaughtering

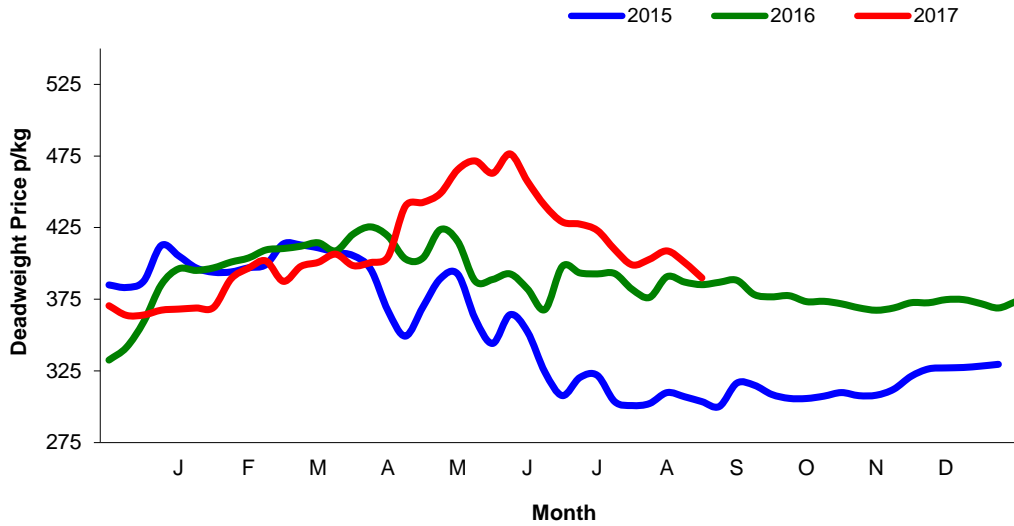


NI Weekly Cow Slaughtering



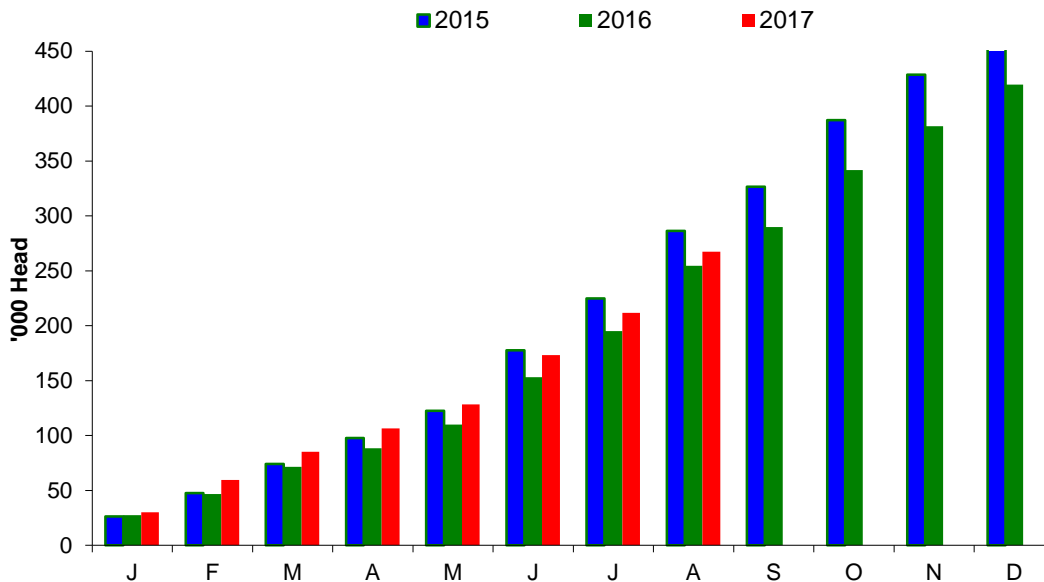
Sheep Prices

Average Deadweight NI Hogget / Lamb Price

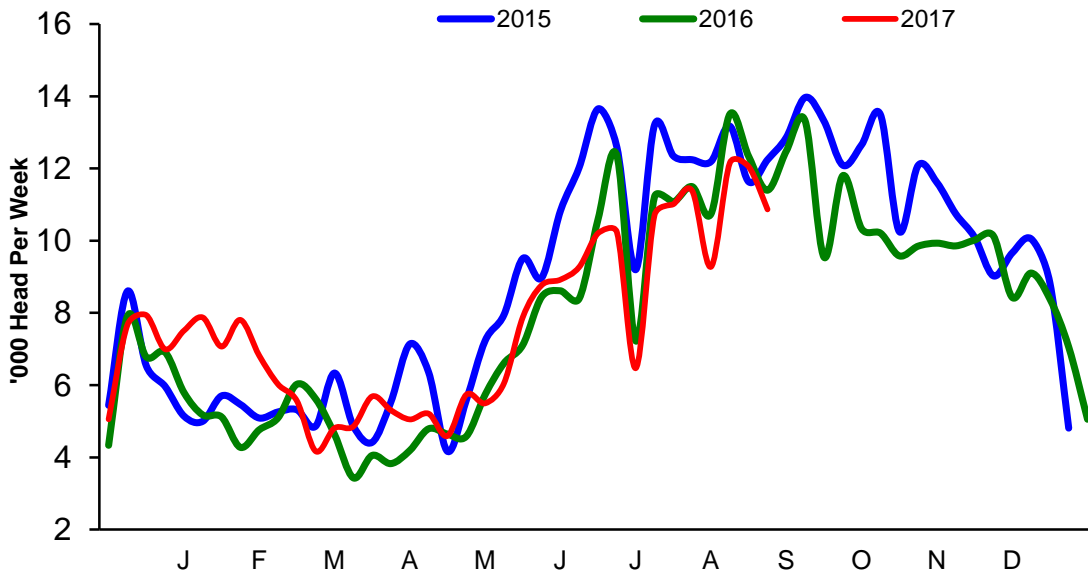


Sheep Slaughterings

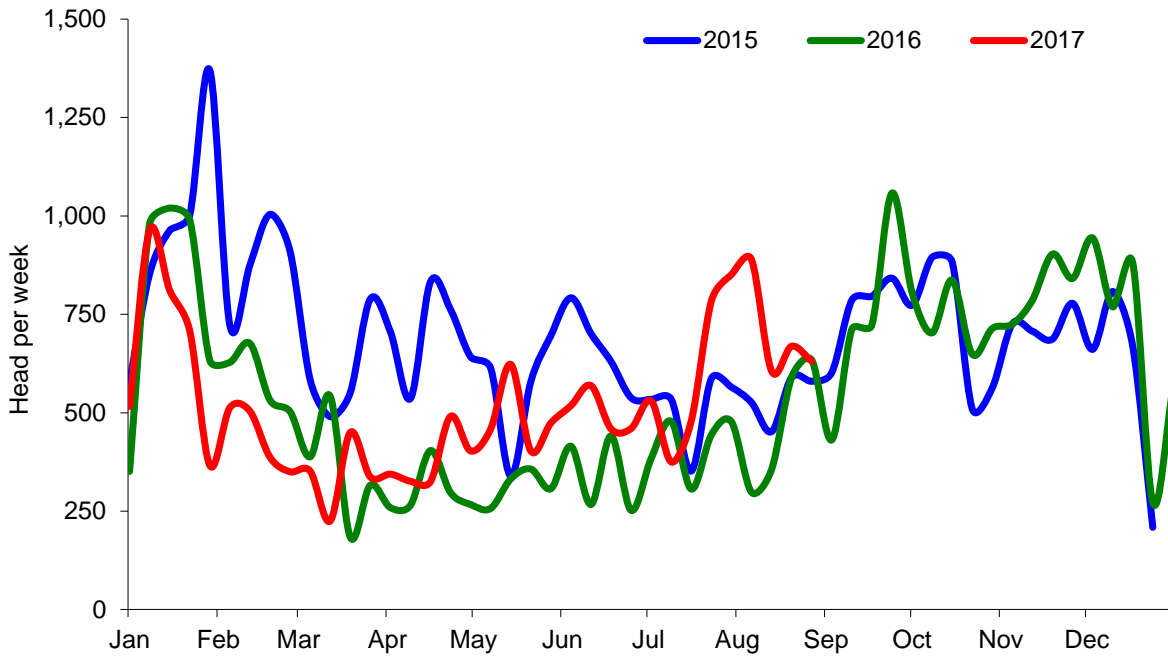
Cumulative Lamb & Hogget Slaughterings



Total Weekly Lamb & Hogget Slaughtering



Total Weekly Ewe and Ram Slaughtering



## Market Information August 2017

### Page 8

| NI CATTLE AND SHEEP SLAUGHTERINGS FOR THE FOODCHAIN   |                          |               |            |                           |                |            |
|---|--------------------------|---------------|------------|---------------------------|----------------|------------|
|   | August                   |               |            | Year to Date              |                |            |
|   | (5 weeks ended 02/09/17) |               |            | (22 weeks ended 02/09/17) |                |            |
|   | Aug-16                   | Aug-17        | % Change   | 2016                      | 2017           | Change     |
| <b>CATTLE</b>   |                          |               |            |                           |                |            |
| Steers  | 13,575                   | 15,008        | +11%       | 61,138                    | 64,617         | +6%        |
| Heifers   | 9,499                    | 10,381        | +9%        | 43,922                    | 49,202         | +12%       |
| Young Bulls / Calves  | 3,752                    | 3,668         | -2%        | 18,371                    | 18,071         | -2%        |
| <b>Total Prime Cattle</b>   | <b>26,826</b>            | <b>29,057</b> | <b>+8%</b> | <b>123,431</b>            | <b>131,890</b> | <b>+7%</b> |
| Calves  | 772                      | 476           | -38%       | 3,016                     | 2,210          | -27%       |
| Cows  | 9,137                    | 9,200         | +1%        | 37,161                    | 38,046         | +2%        |
| Mature Bulls  | 419                      | 428           | +2%        | 1,803                     | 1,582          | -12%       |
| <b>Total Cattle</b>   | <b>37,154</b>            | <b>39,161</b> | <b>+5%</b> | <b>165,411</b>            | <b>173,728</b> | <b>+5%</b> |
| <b>SHEEP</b>  |                          |               |            |                           |                |            |
| Lambs & Hoggets   | 59,476                   | 55,730        | -6%        | 182,942                   | 182,324        | -0%        |
| Ewes & Rams   | 2,309                    | 3,646         | +58%       | 8,259                     | 11,669         | +41%       |
| <b>Total Sheep</b>  | <b>61,785</b>            | <b>59,376</b> | <b>-4%</b> | <b>191,201</b>            | <b>193,993</b> | <b>+1%</b> |
| The above figures are provisional; any amendments will be incorporated in the cumulative data (source DAERA). |                          |               |            |                           |                |            |

| NI BEEF AND SHEEPMEAT PRODUCTION - FOODCHAIN  |                          |               |            |                           |               |            |
|---|--------------------------|---------------|------------|---------------------------|---------------|------------|
|   | August                   |               |            | Year to Date              |               |            |
|   | (5 weeks ended 02/09/17) |               |            | (22 weeks ended 02/09/17) |               |            |
|   | Aug-16                   | Aug-17        | % Change   | 2016                      | 2017          | Change     |
| <b>BEEF</b>   |                          |               |            |                           |               |            |
| Steers  | 4,777                    | 5,227         | +9%        | 21,631                    | 22,464        | +4%        |
| Heifers   | 2,984                    | 3,244         | +9%        | 13,935                    | 15,407        | +11%       |
| Young Bulls   | 1,253                    | 1,262         | +1%        | 6,075                     | 6,028         | -1%        |
| <b>Total Prime Beef</b>   | <b>9,014</b>             | <b>9,732</b>  | <b>+8%</b> | <b>41,641</b>             | <b>43,899</b> | <b>+5%</b> |
| Calves  | 160                      | 91            | -43%       | 641                       | 411           | -36%       |
| Cows  | 2,715                    | 2,726         | +0%        | 11,349                    | 11,419        | +1%        |
| Mature Bulls  | 200                      | 186           | -7%        | 815                       | 713           | -13%       |
| <b>Total Beef</b>   | <b>12,088</b>            | <b>12,736</b> | <b>+5%</b> | <b>54,446</b>             | <b>56,442</b> | <b>+4%</b> |
| <b>SHEEPMEAT</b>  |                          |               |            |                           |               |            |
| Lambs & Hoggets   | 1,230                    | 1,199         | -3%        | 3,846                     | 3,889         | +1%        |
| Ewes & Rams   | 66                       | 103           | +56%       | 246                       | 338           | +38%       |
| <b>Total Sheepmeat</b>  | <b>1,296</b>             | <b>1,302</b>  | <b>+0%</b> | <b>4,091</b>              | <b>4,228</b>  | <b>+3%</b> |
| The above figures are provisional; any amendments will be incorporated in the cumulative data (source DAERA). |                          |               |            |                           |               |            |



**Market Information August 2017**  
**Page 9**

**Total Carcase Weight Produced for the Food Chain**  
**Year-to-Date (tonnes – t.)**

| Month              | Prime Cattle  |               | Cows & Bulls  |               | Lambs/Hoggets |              | Ewes & Rams   |            |
|--------------------|---------------|---------------|---------------|---------------|---------------|--------------|---------------|------------|
|                    | 2016          | 2017          | 2016          | 2017          | 2016          | 2017         | 2016          | 2017       |
| January            | 8,471         | 9,001         | 2,489         | 2,527         | 599           | 675          | 98            | 82         |
| February           | 8,906         | 8,854         | 2,334         | 2,581         | 422           | 666          | 61            | 50         |
| March              | 10,704        | 10,578        | 2,466         | 2,695         | 551           | 582          | 47            | 49         |
| April              | 8,617         | 8,019         | 2,188         | 1,850         | 367           | 475          | 37            | 45         |
| May                | 9,529         | 11,014        | 2,369         | 2,670         | 619           | 642          | 50            | 70         |
| June               | 7,837         | 8,027         | 2,286         | 2,424         | 762           | 773          | 41            | 60         |
| July               | 6,644         | 7,106         | 2,407         | 2,274         | 868           | 797          | 51            | 61         |
| August             | 9,014         | 9,732         | 2,715         | 2,726         | 1,230         | 1,199        | 66            | 103        |
| September          |               |               |               |               |               |              |               |            |
| October            |               |               |               |               |               |              |               |            |
| November           |               |               |               |               |               |              |               |            |
| December           |               |               |               |               |               |              |               |            |
| <b>Total</b>       | <b>69,722</b> | <b>72,332</b> | <b>19,253</b> | <b>19,748</b> | <b>5,417</b>  | <b>5,810</b> | <b>451</b>    | <b>519</b> |
| <b>Change (t.)</b> | <b>2,610</b>  |               | <b>495</b>    |               | <b>393</b>    |              | <b>68</b>     |            |
| <b>% Change</b>    | <b>3.74%</b>  |               | <b>2.57%</b>  |               | <b>7.25%</b>  |              | <b>15.10%</b> |            |

*\*excludes calves*

**Change in Throughput / Production**

**Last 4 weeks 2016/2017**

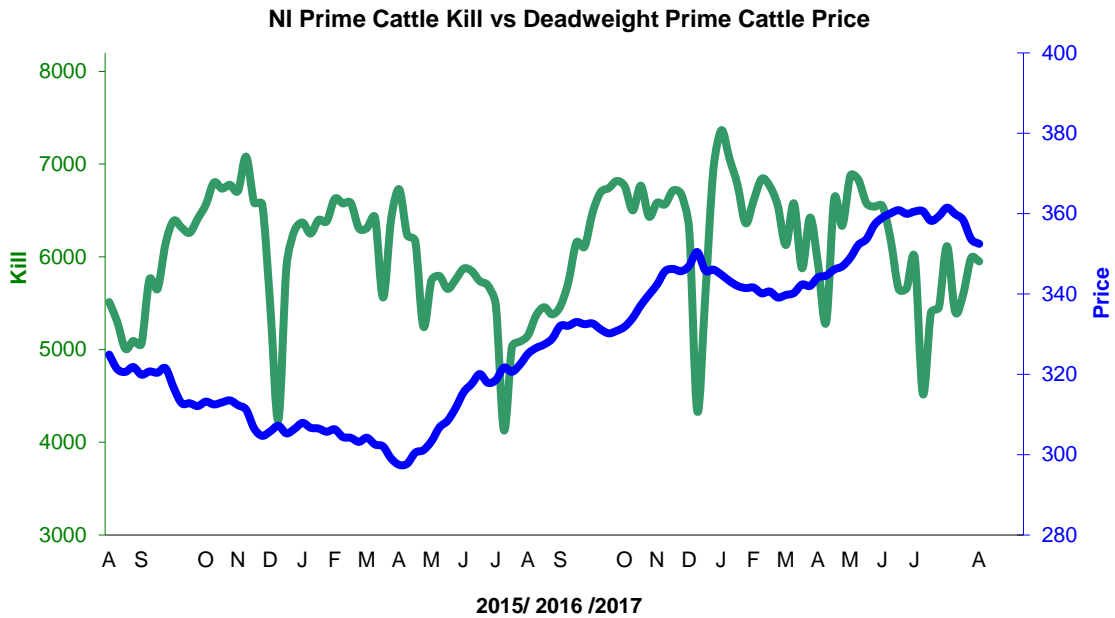
**Change in Throughput / Production 2016/2017**

**August**

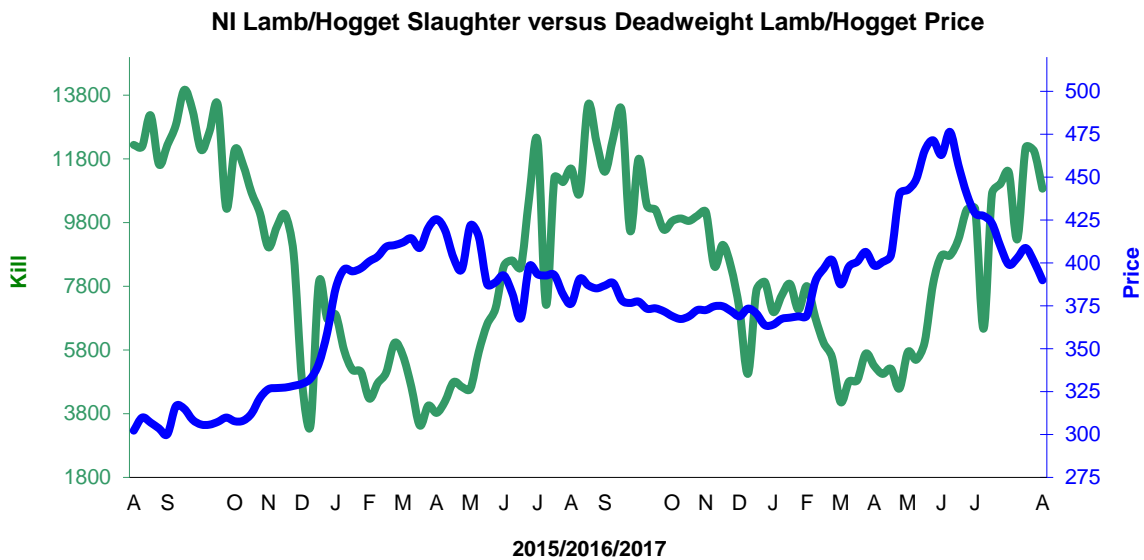
| 2016/2017          | Number       | Tonnage     | ACW Kg       |
|--------------------|--------------|-------------|--------------|
| Prime              | 8.3%         | 8.0%        | -1.28        |
| Cows               | 0.7%         | 0.4%        | -0.64        |
| <b>Total</b>       | <b>5.4%</b>  | <b>5.4%</b> | <b>-0.32</b> |
| Lamb               | -6.3%        | -2.5%       | 0.99         |
| Ewes and Rams      | 57.9%        | 55.6%       | -0.68        |
| <b>Total Sheep</b> | <b>-3.9%</b> | <b>0.5%</b> | <b>1.08</b>  |

**Supply and Price**

**NI Clean Cattle Kill vs. Average Clean Cattle Price**



**NI Lamb/Hogget Kill vs. Average Lamb / Hogget Price**

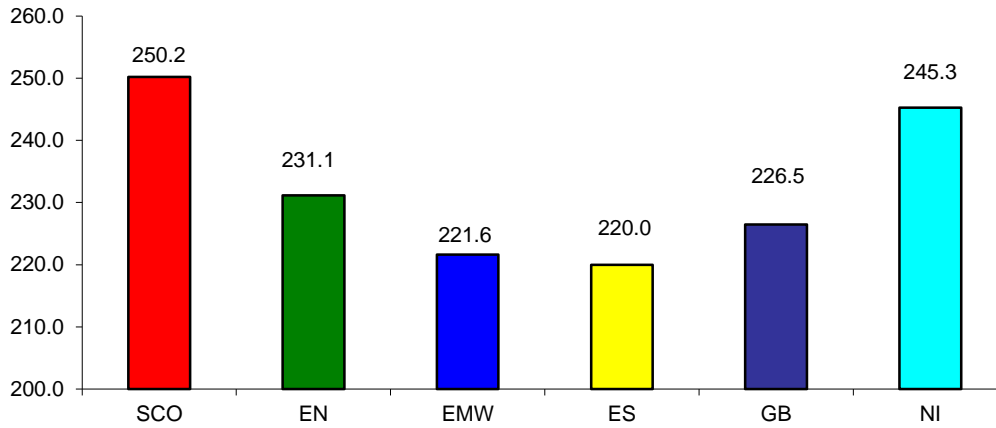


|       |               |
|-------|---------------|
| Green | Supply (Kill) |
| Blue  | Price         |

**BRITISH ISLES COMPARISONS**

**UK Average Cow Prices**

**52 Weeks to 31 August 2017**

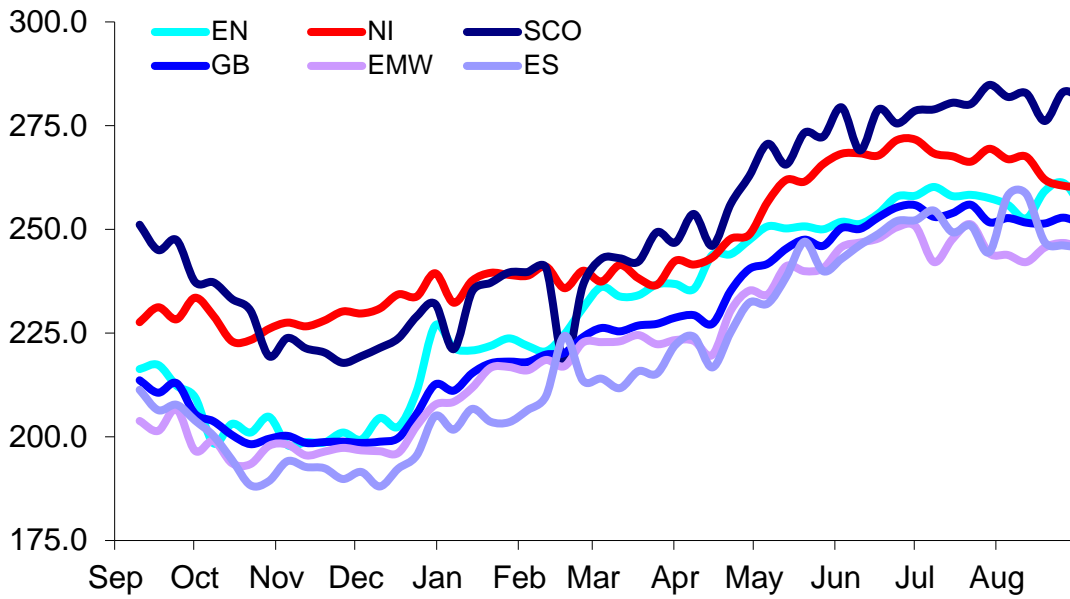


Prices relate to UK Dressing Specification

|     |                            |
|-----|----------------------------|
| SCO | Scotland                   |
| EN  | England North              |
| EMW | England Midlands and Wales |
| ES  | England South              |
| NI  | Northern Ireland           |
| GB  | Great Britain              |

**Weekly UK Cow Prices**

**52 Weeks to 31 August 2017**

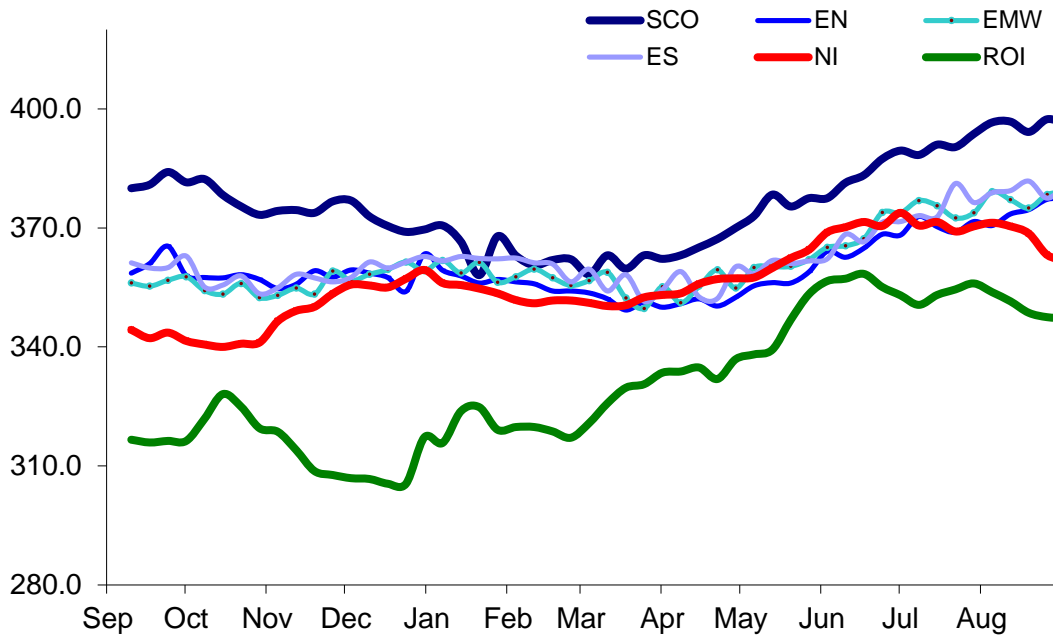


Prices relate to UK Dressing Specification

**Market Information August 2017**  
**Page 12**

**British Isles R3 Steer Price**

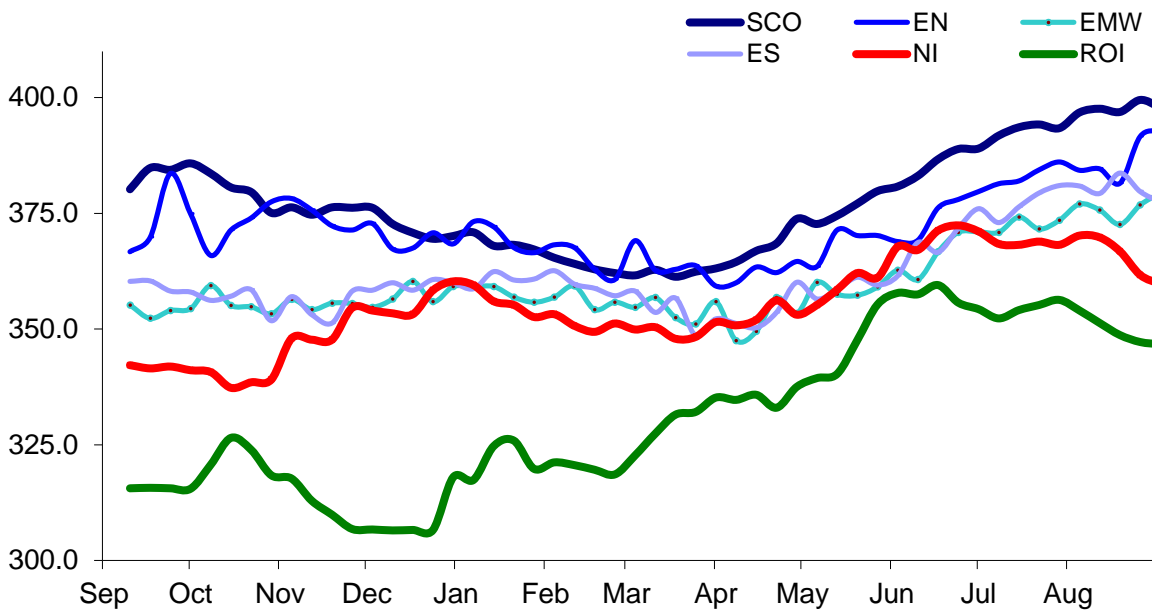
**52 Weeks to 31 August 2017**



Prices relate to UK Dressing Specification

**British Isles R4 Steer Price**

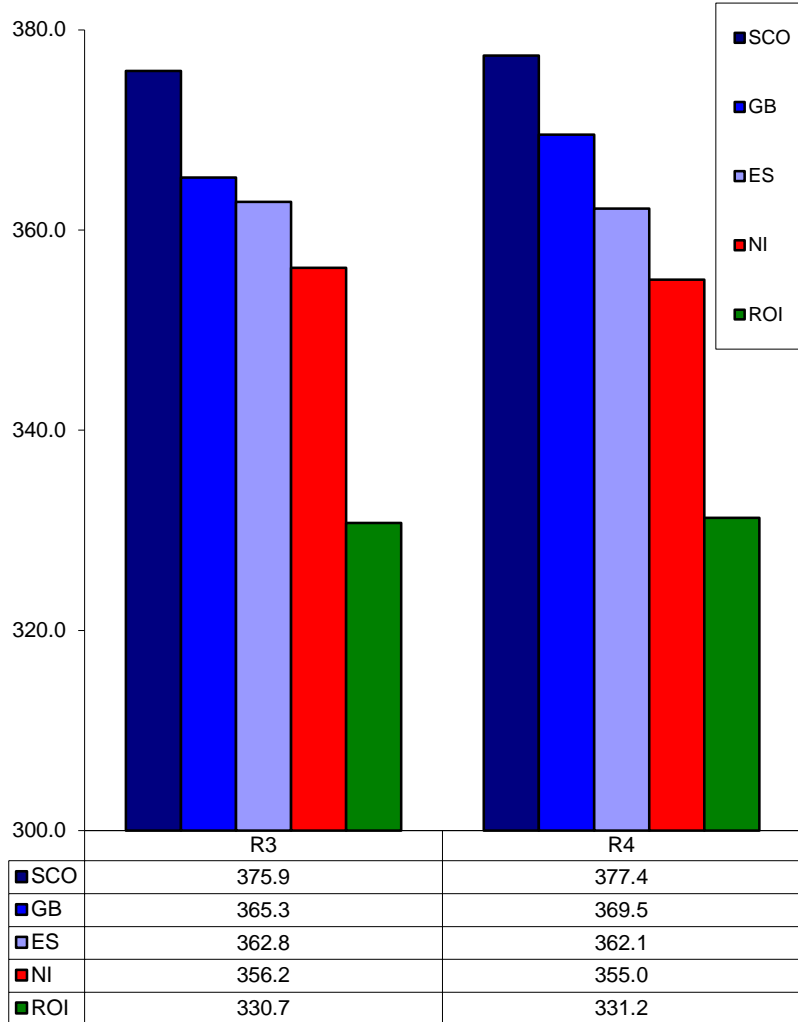
**52 Weeks to 31 August 2017**



Prices relate to UK Dressing Specification

**British Isles Average R3 and R4 Steer price**

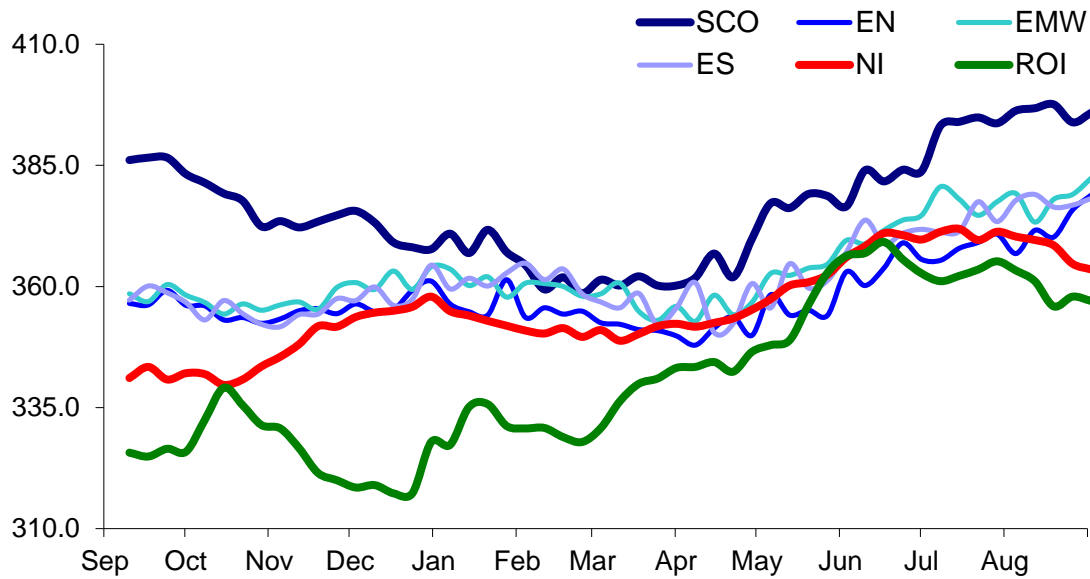
**52 Weeks to 31 August 2017**



Prices relate to UK Dressing Specification

British Isles R3 Heifer Price

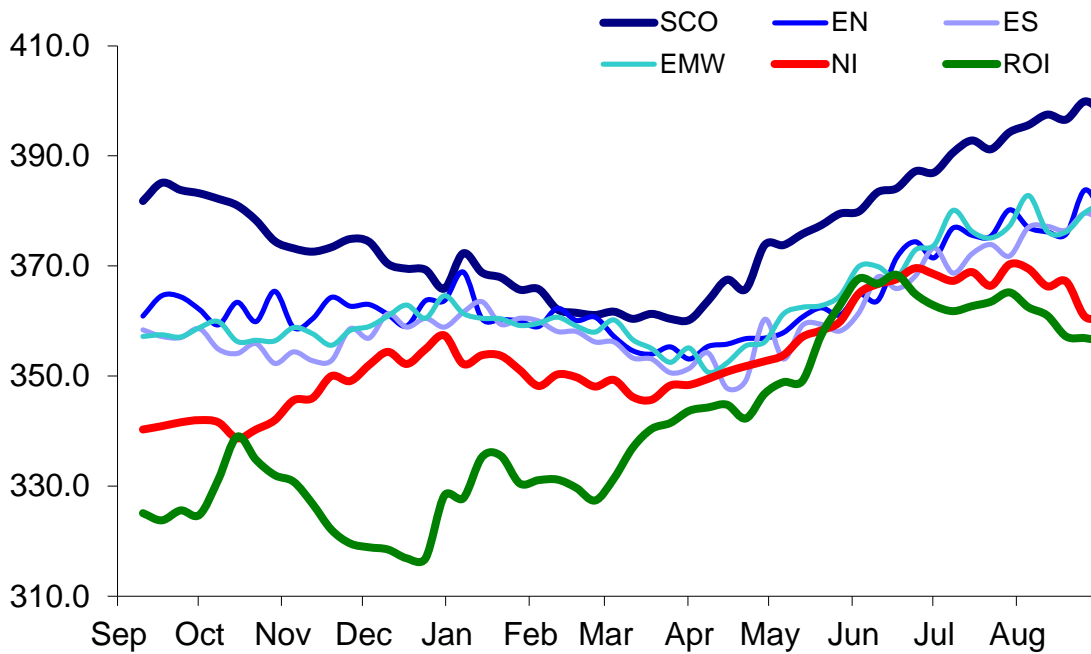
52 Weeks to 31 August 2017



Prices relate to UK Dressing Specification

British Isles R4 Heifer Price

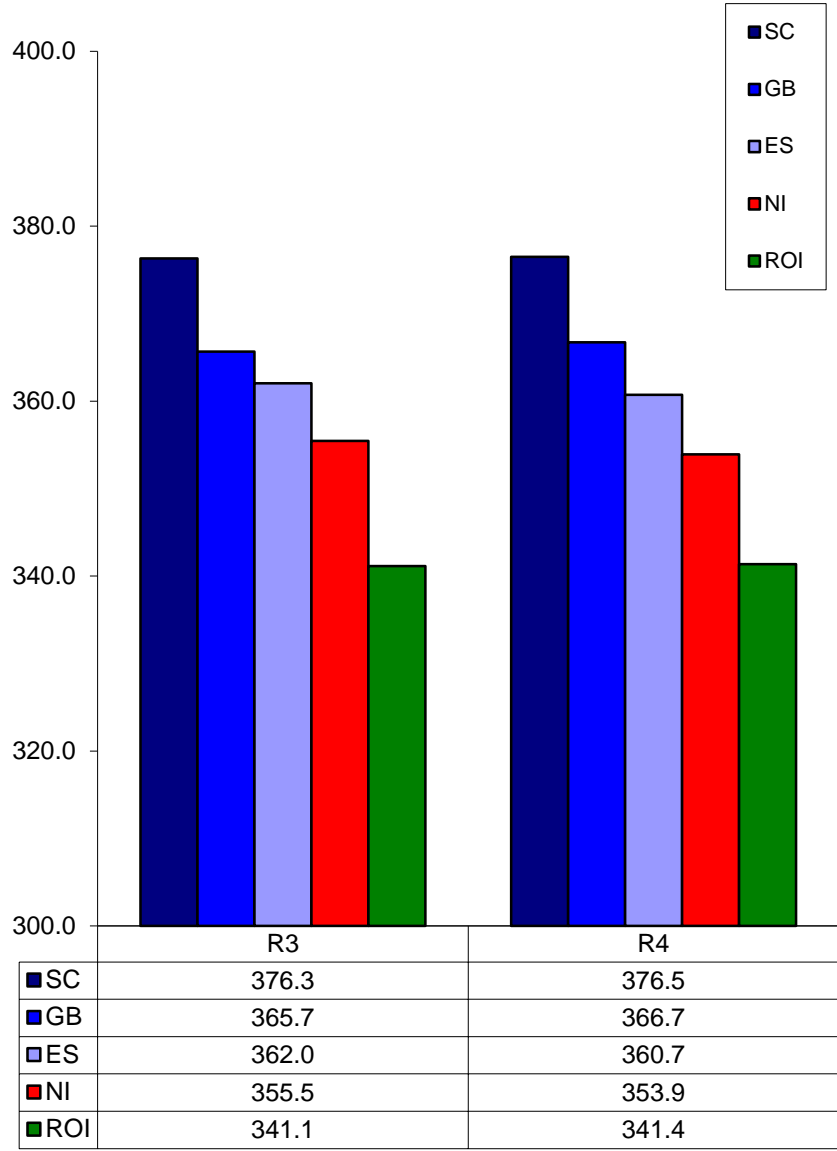
52 Weeks to 31 August 2017



Prices relate to UK Dressing Specification

**British Isles Average R3 and R4 Heifer price**

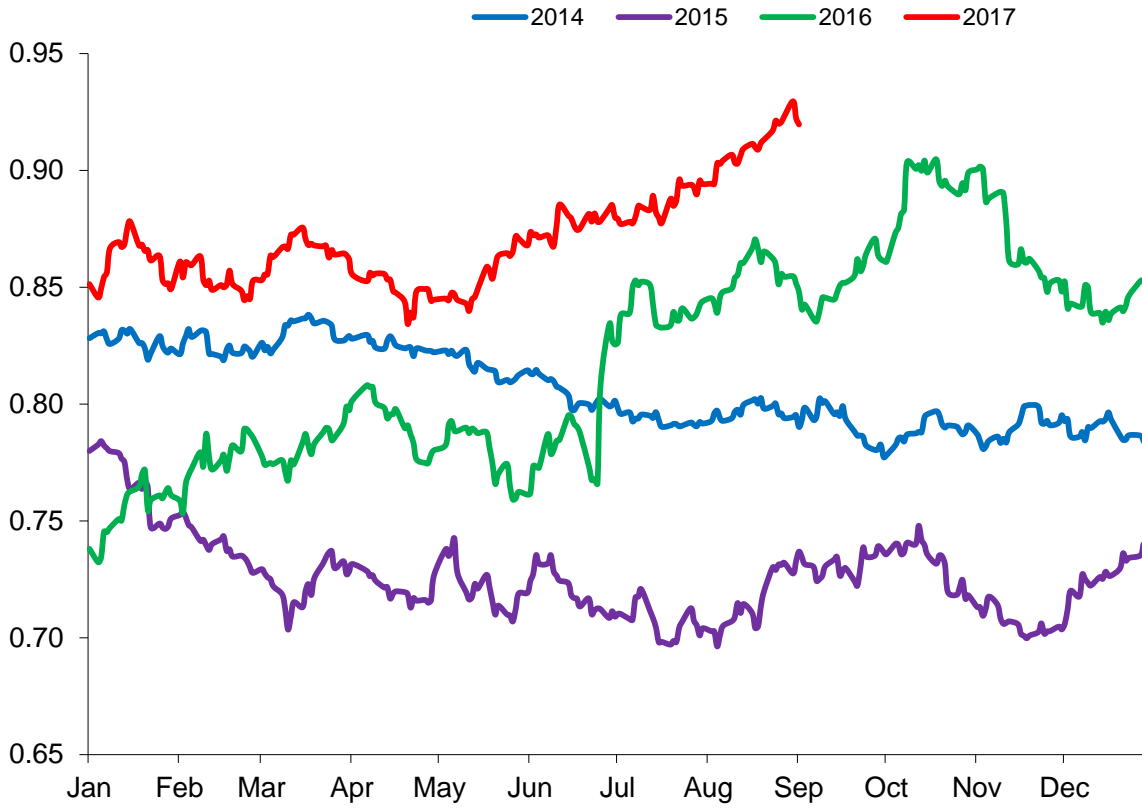
**52 Weeks to 31 August 2017**



Prices relate to UK Dressing Specification

Exchange Rate £ / Euro

01 January 2014 –31 August 2017

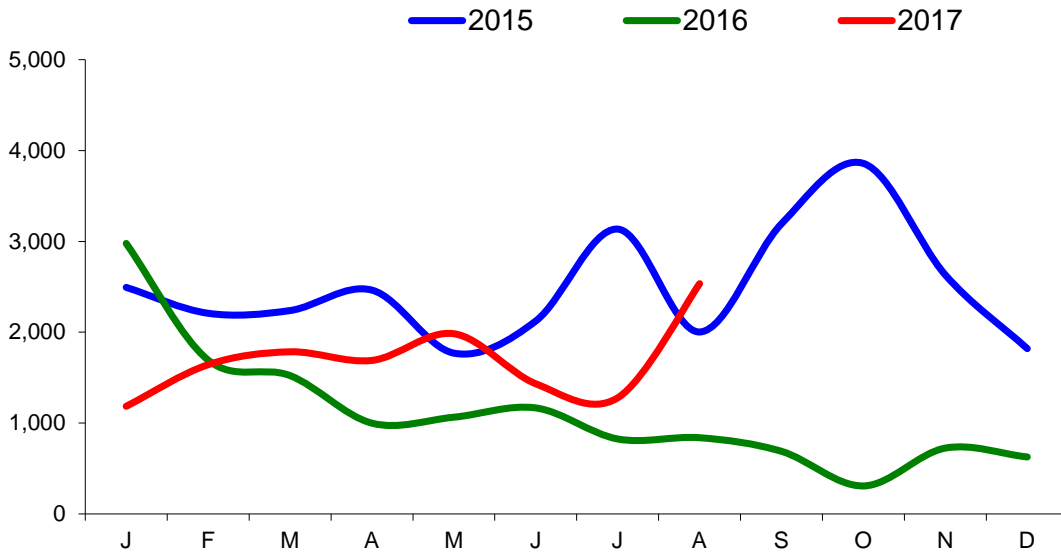




Imports

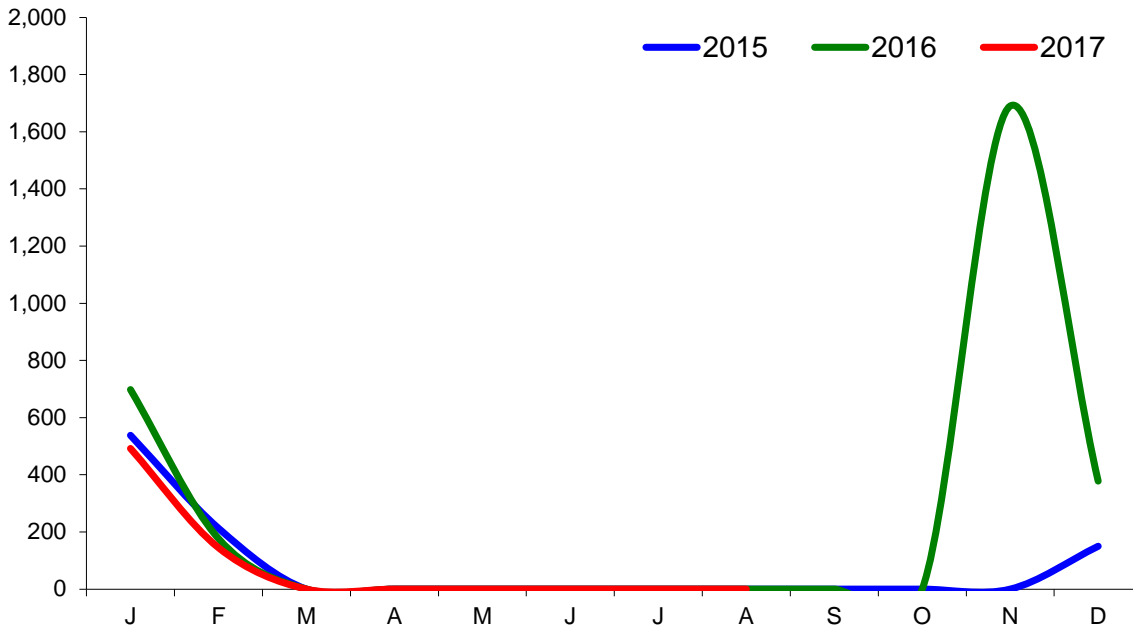
Monthly Live Imports of Cattle into NI for Direct Slaughter

From ROI and GB Combined



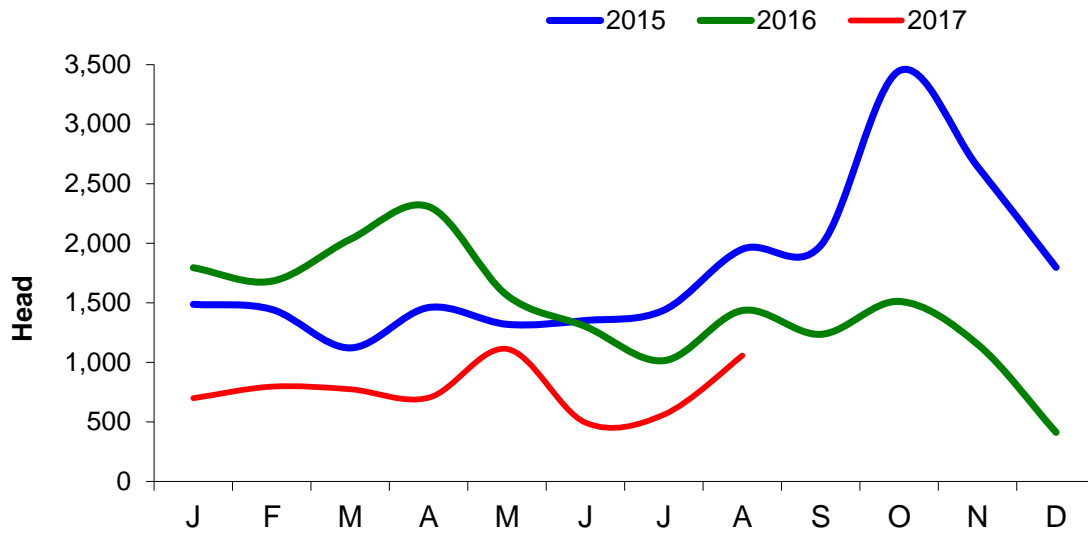
Monthly Live Imports of Sheep into NI for Direct Slaughter

From ROI and GB Combined



Exports

Monthly Live Exports of Cattle from NI into ROI and GB



Monthly Live Exports of Sheep from NI into ROI and GB

