



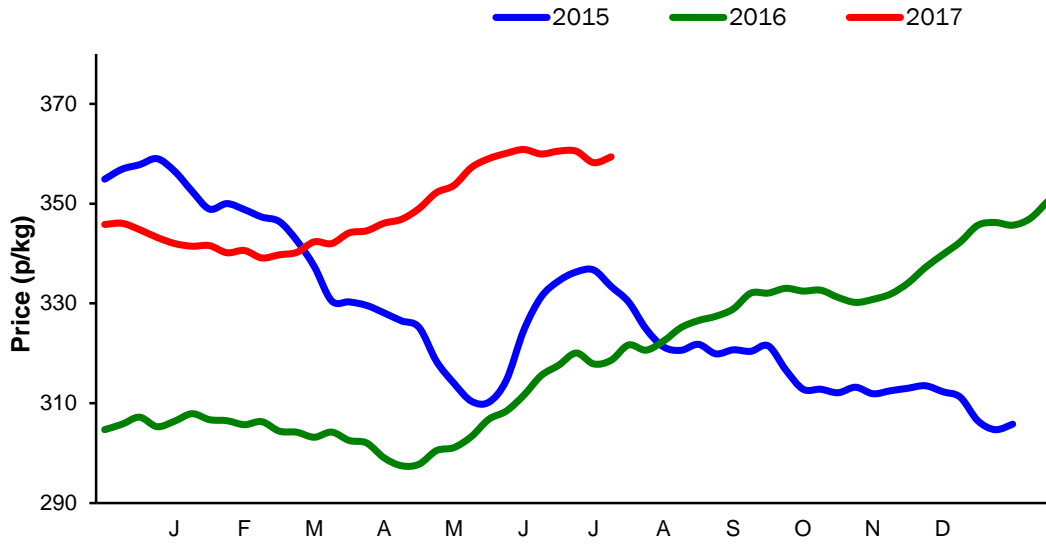
Monthly Economic Review
July 2017

Contents

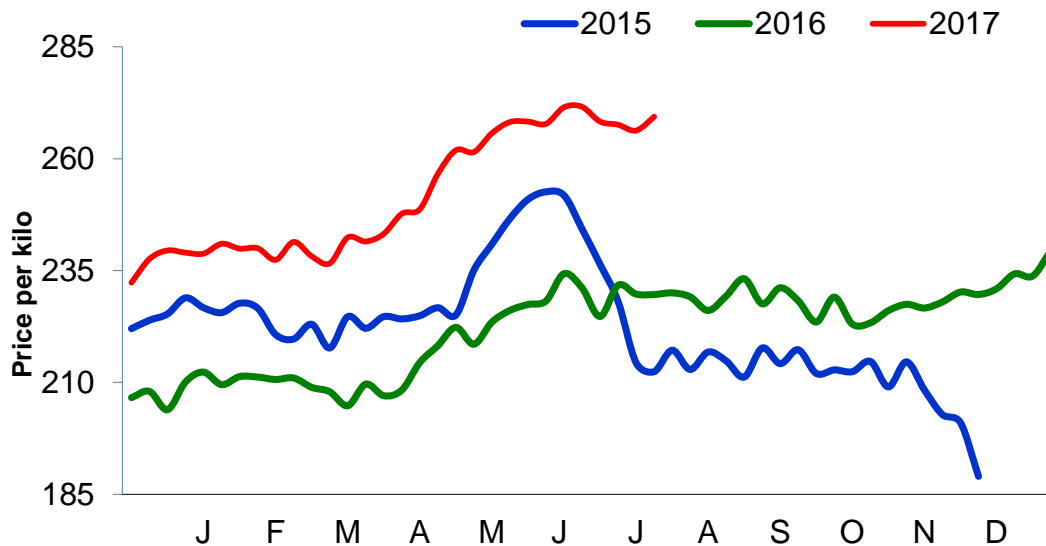
Contents.....	2
Cattle Prices	4
Average NI Clean Cattle Price	4
Average NI Cow Price.....	4
Cattle Slaughtering.....	5
NI Clean Cattle Slaughtering – Cumulative	5
NI Weekly Clean Cattle Slaughtering.....	5
NI Weekly Cow Slaughtering	5
Sheep Prices.....	6
Average NI Lamb / Hogget Price	6
Sheep Slaughtering.....	7
Cumulative Lamb & Hogget Slaughtering	7
Total Weekly Lamb & Hogget Slaughtering	7
Total Weekly Ewe and Ram Slaughtering.....	7
Total Carcase Weight Produced for the Food Chain.....	8
Change in Throughput / Production	9
Supply and Price.....	10
NI Lamb/Hogget Kill vs. Average Lamb / Hogget Price	10
NI Clean Cattle Kill vs. Average Clean Cattle Price.....	10
British Isles Price Comparisons	11
UK Average Cow Prices	11
Weekly UK Cow Prices	11
British Isles R3 Steer Price	12
British Isles R4 Steer Price	12
British Isles Average R3 and R4 Steer price	13
British Isles R3 Heifer Price	14
British Isles R4 Heifer Price	14
British Isles Average R3 and R4 Heifer price.....	15
Exchange Rate £ / Euro	17
Imports.....	18
Monthly Live Imports of Cattle into NI for Direct Slaughter	18
Monthly Live Imports of Sheep into NI for Direct Slaughter	18
Exports	19
Monthly Live Exports of Cattle from NI into RoI and GB.....	19
Monthly live Exports of Sheep from NI into RoI and GB	19

Cattle Prices

Average NI Clean Cattle Price

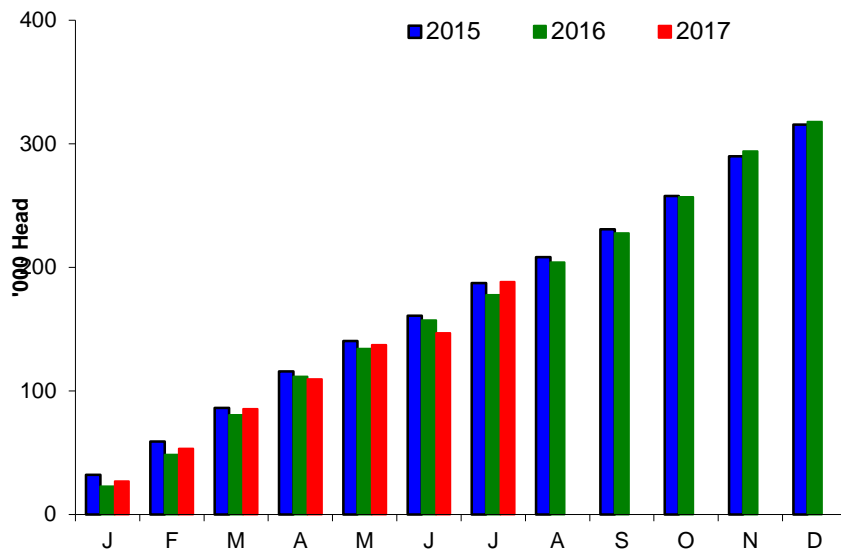


Average NI Cow Price

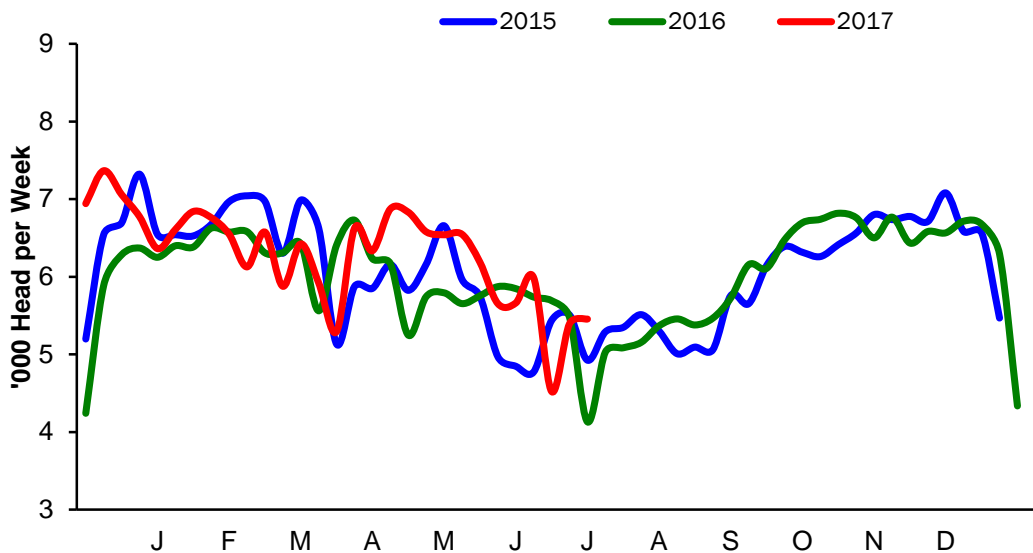


Cattle Slaughtering

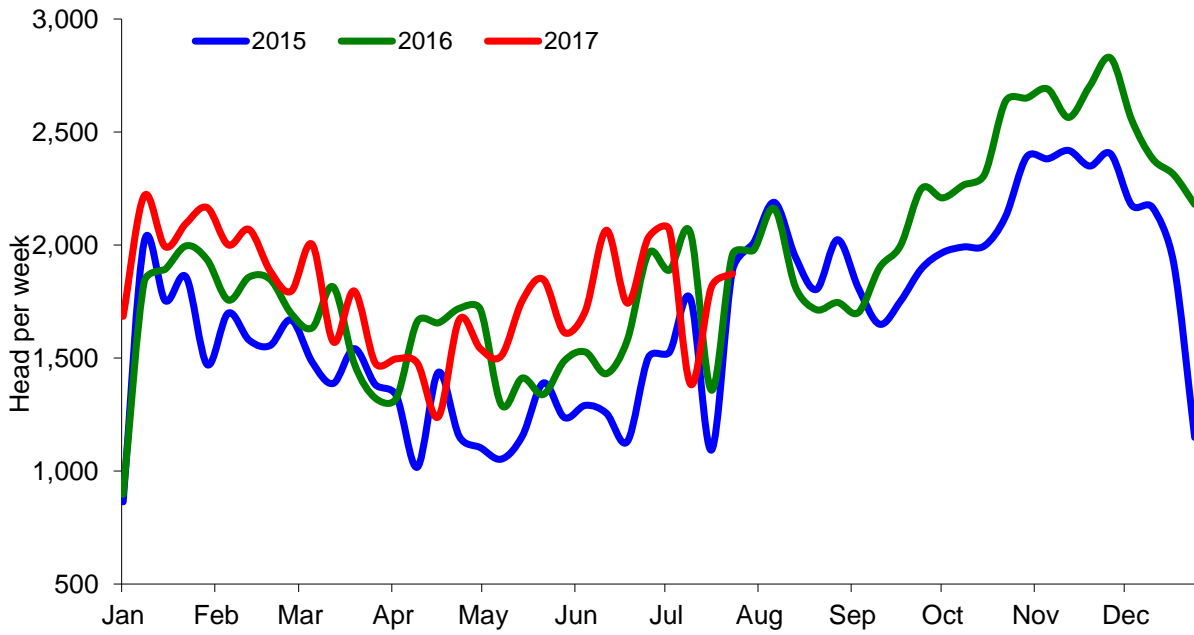
NI Clean Cattle Slaughtering – Cumulative



NI Weekly Clean Cattle Slaughtering

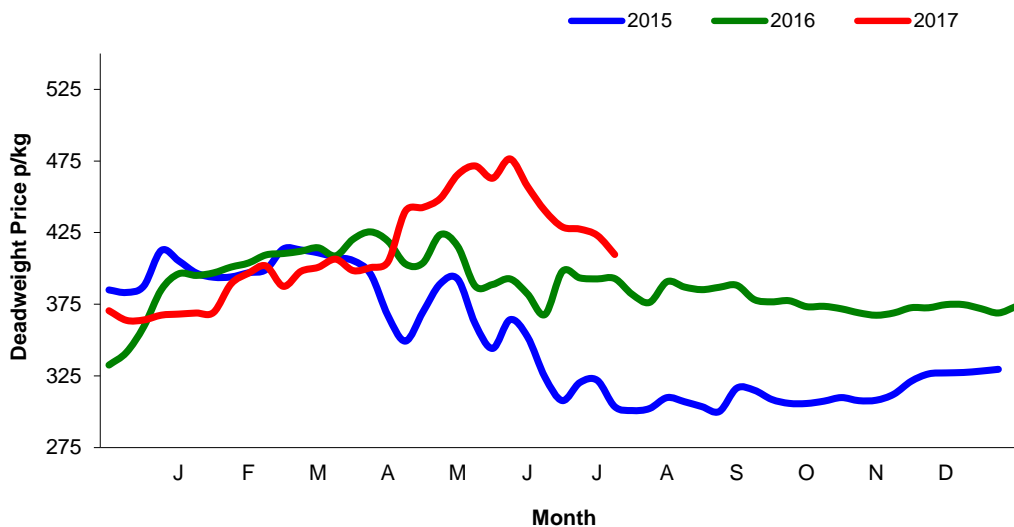


NI Weekly Cow Slaughtering



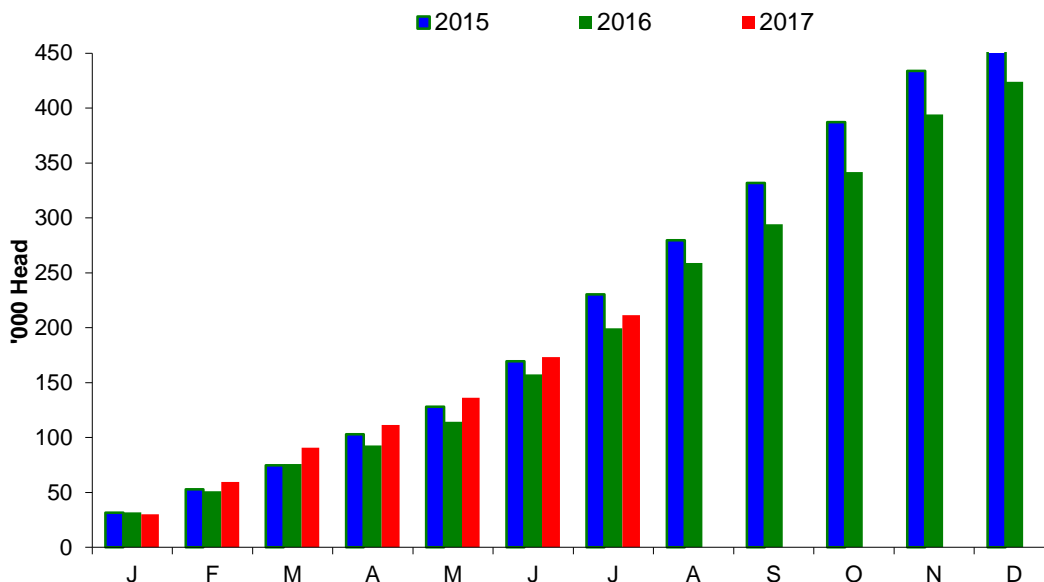
Sheep Prices

Average Deadweight NI Hogget / Lamb Price

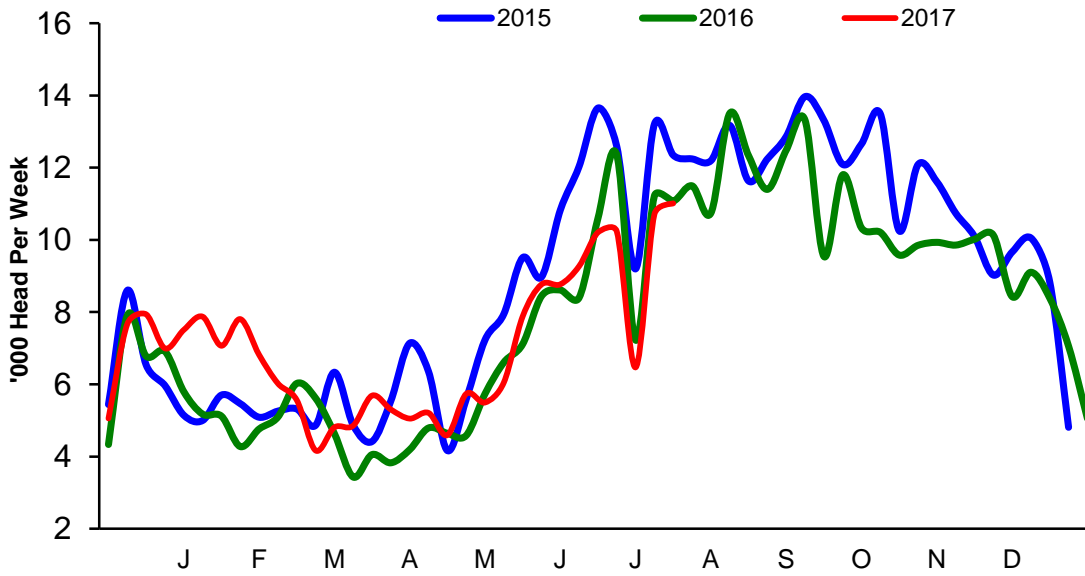


Sheep Slaughterings

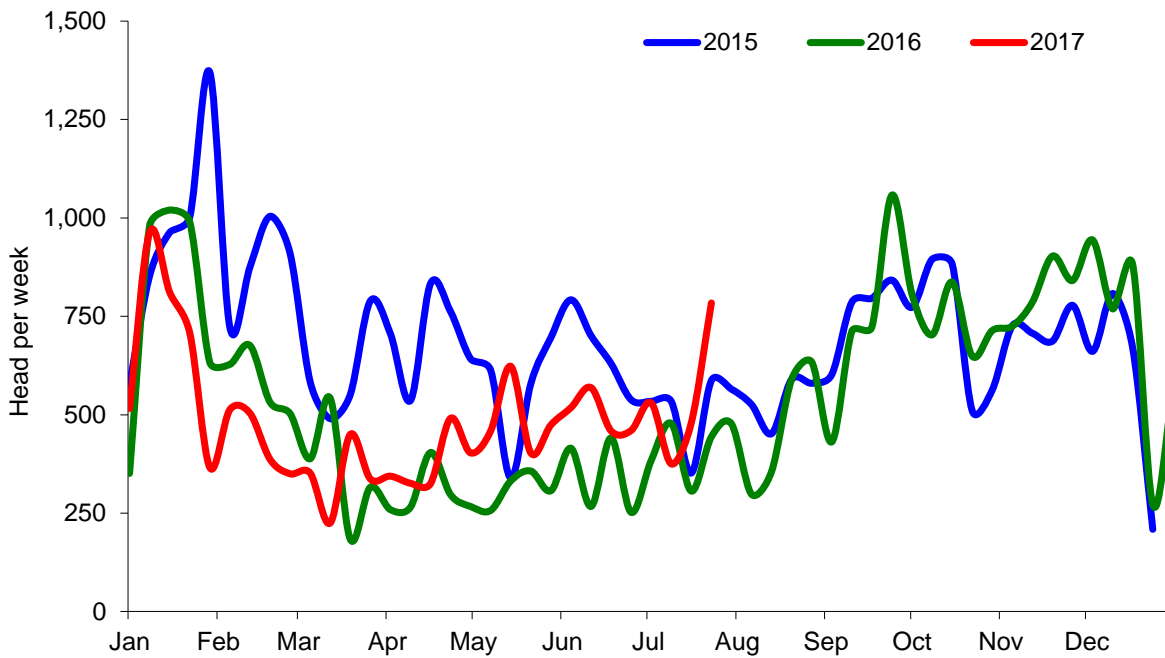
Cumulative Lamb & Hogget Slaughterings



Total Weekly Lamb & Hogget Slaughtering



Total Weekly Ewe and Ram Slaughtering



Market Information July 2017
Page 8

NI CATTLE AND SHEEP SLAUGHTERINGS FOR THE FOODCHAIN						
	July			Year to Date		
	(4 weeks ended 29/07/17)			(17 weeks ended 29/07/17)		
	Jul-16	Jul-17	% Change	2016	2017	Change
CATTLE						
Steers	9,452	9,936	+5%	47,563	49,609	+4%
Heifers	6,925	7,754	+12%	34,423	38,821	+13%
Young Bulls / Calves	3,346	3,669	+10%	14,619	14,403	-1%
Total Prime Cattle	19,723	21,359	+8%	96,605	102,833	+6%
Calves	480	427	-11%	2,244	1,734	-23%
Cows	7,347	7,140	-3%	28,024	28,846	+3%
Mature Bulls	325	280	-14%	1,384	1,154	-17%
Total Cattle	27,875	29,206	+5%	128,257	134,567	+5%
SHEEP						
Lambs & Hoggets	41,873	38,425	-8%	123,466	126,594	+3%
Ewes & Rams	1,705	2,169	+27%	5,950	8,023	+35%
Total Sheep	43,578	40,594	-7%	129,416	134,617	+4%
The above figures are provisional; any amendments will be incorporated in the cumulative data (source DAERA).						

NI BEEF AND SHEEPMEAT PRODUCTION - FOODCHAIN						
	July			Year to Date		
	(4 weeks ended 29/07/17)			(17 weeks ended 29/07/17)		
	Jul-16	Jul-17	% Change	2016	2017	Change
BEEF						
Steers	3,340	3,438	+3%	16,854	17,237	+2%
Heifers	2,188	2,435	+11%	10,951	12,163	+11%
Young Bulls	1,116	1,233	+11%	4,822	4,767	-1%
Total Prime Beef	6,644	7,106	+7%	32,627	34,166	+5%
Calves	101	80	-21%	481	320	-34%
Cows	2,253	2,148	-5%	8,634	8,693	+1%
Mature Bulls	154	126	-18%	615	526	-14%
Total Beef	9,153	9,461	+3%	42,358	43,706	+3%
SHEEPMEAT						
Lambs & Hoggets	868	797	-8%	2,616	2,690	+3%
Ewes & Rams	51	61	+20%	179	236	+31%
Total Sheepmeat	919	858	-7%	2,795	2,926	+5%
The above figures are provisional; any amendments will be incorporated in the cumulative data (source DAERA).						

Market Information July 2017
Page 9

Total Carcase Weight Produced for the Food Chain
Year-to-Date (tonnes – t.)

Month	Prime Cattle		Cows & Bulls		Lambs/Hoggets		Ewes & Rams	
	2016	2017	2016	2017	2016	2017	2016	2017
January	8,471	9,001	2,489	2,527	599	675	98	82
February	8,906	8,854	2,334	2,581	422	666	61	50
March	10,704	10,578	2,466	2,695	551	582	47	49
April	8,617	8,019	2,188	1,850	367	475	37	45
May	9,529	11,014	2,369	2,670	619	642	50	70
June	7,837	8,027	2,286	2,424	762	773	41	60
July	6,644	7,106	2,407	2,274	868	797	51	61
August								
September								
October								
November								
December								
Total	60,709	62,600	16,538	17,023	4,188	4,611	385	416
Change (t.)	1,891		485		423		31	
% Change	3.12%		2.93%		10.10%		8.14%	

**excludes calves*

Change in Throughput / Production

Last 4 weeks 2016/2017

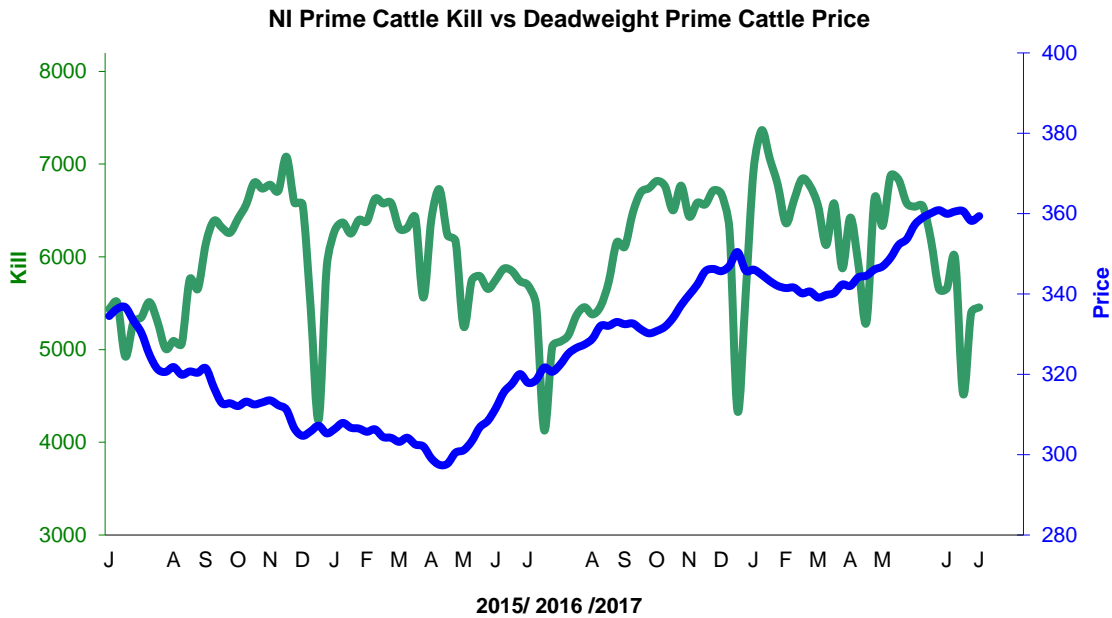
Change in Throughput / Production 2016/2017

July

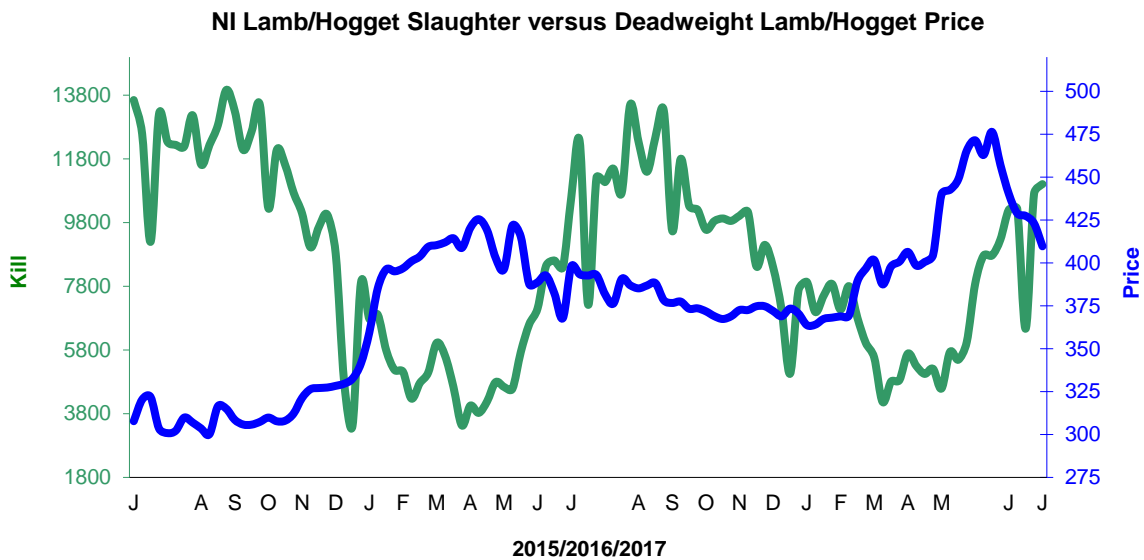
2016/2017	Number	Tonnage	ACW Kg
Prime	8.3%	7.0%	-4.00
Cows	-2.8%	-4.7%	-5.48
Total	4.8%	3.4%	-4.27
Lamb	-8.2%	-8.3%	0.03
Ewes and Rams	27.2%	19.6%	-1.93
Total Sheep	-6.8%	-6.7%	0.06

Supply and Price

NI Clean Cattle Kill vs. Average Clean Cattle Price



NI Lamb/Hogget Kill vs. Average Lamb / Hogget Price

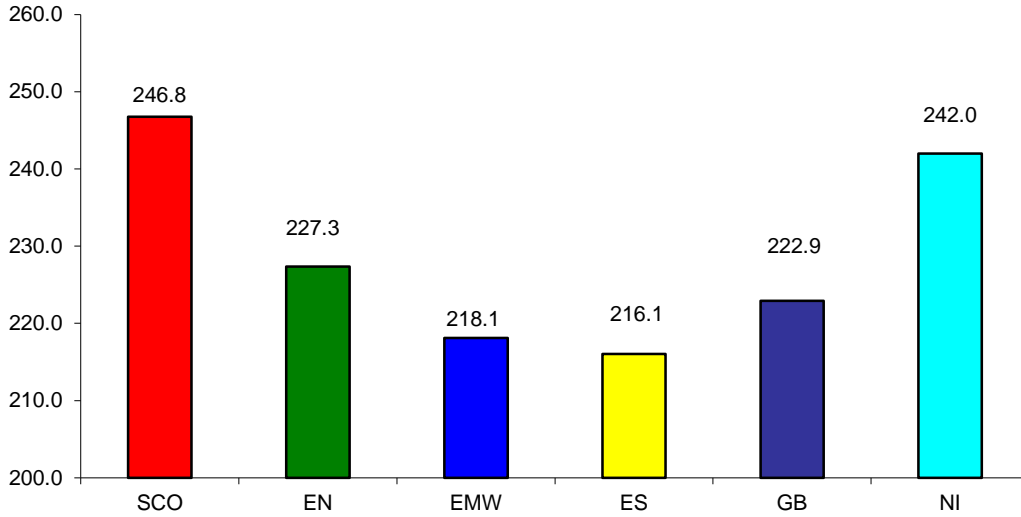


Green	Supply (Kill)
Blue	Price

BRITISH ISLES COMPARISONS

UK Average Cow Prices

52 Weeks to 29 July 2017

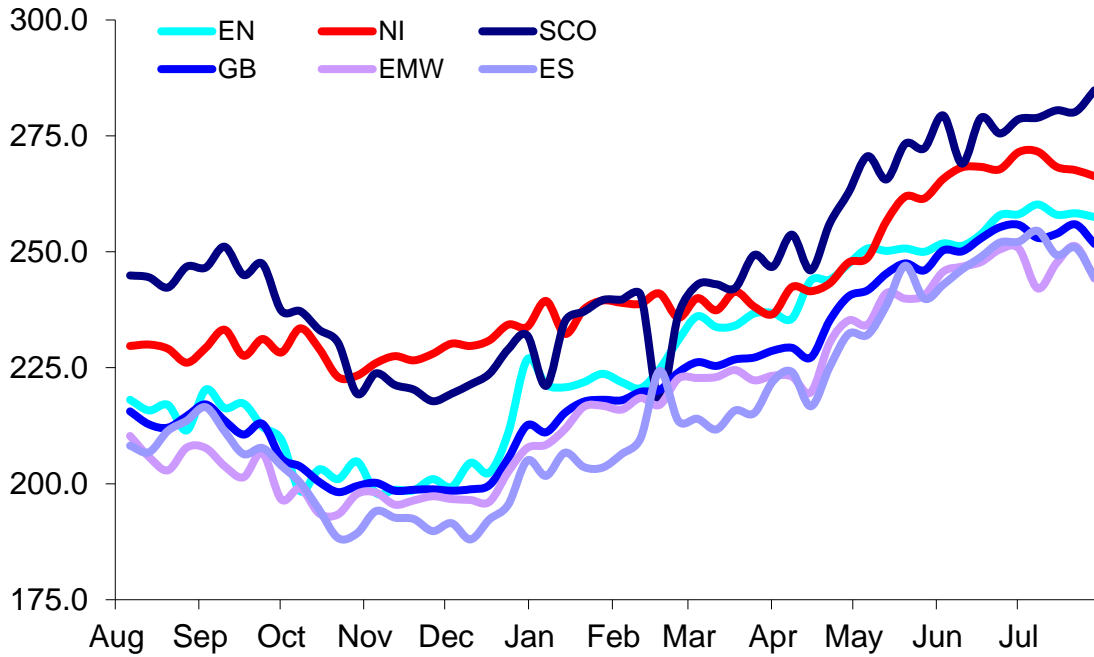


SCO	Scotland
EN	England North
EMW	England Midlands and Wales
ES	England South
NI	Northern Ireland
GB	Great Britain

Prices relate to UK Dressing Specification

Weekly UK Cow Prices

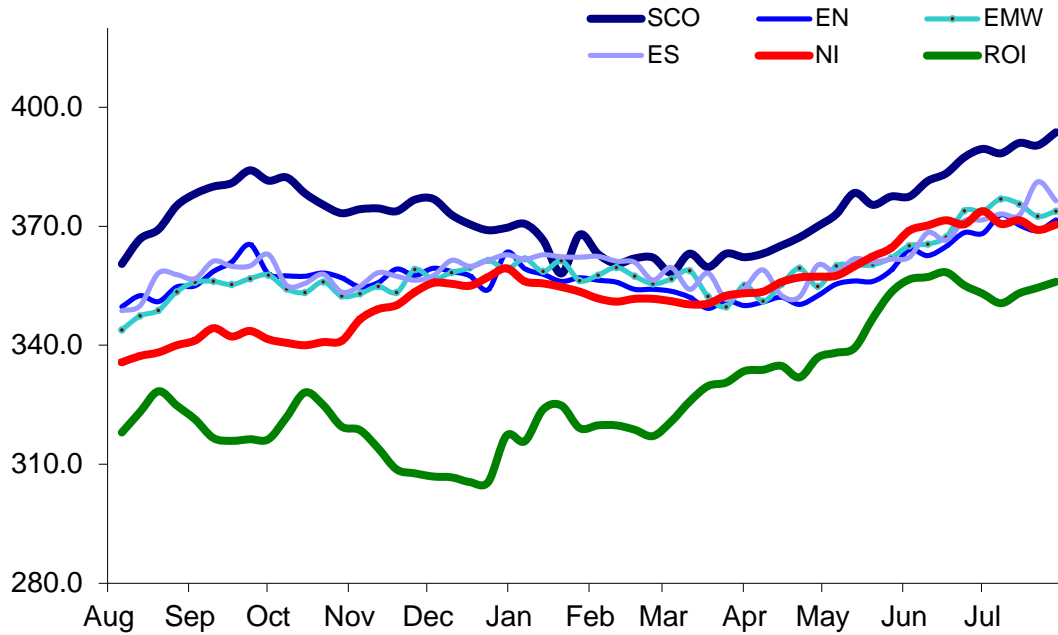
52 Weeks to 29 July 2017



Prices relate to UK Dressing Specification

British Isles R3 Steer Price

52 Weeks to 29 July 2017

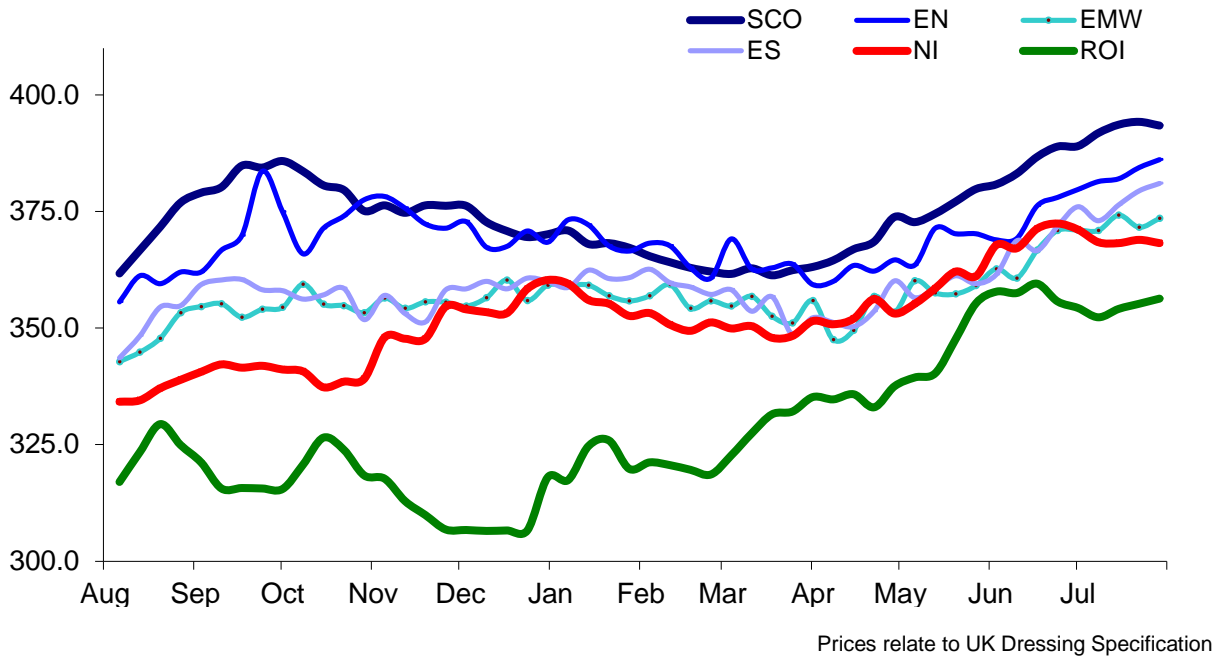


Prices relate to UK Dressing Specification

Market Information July 2017
Page 13

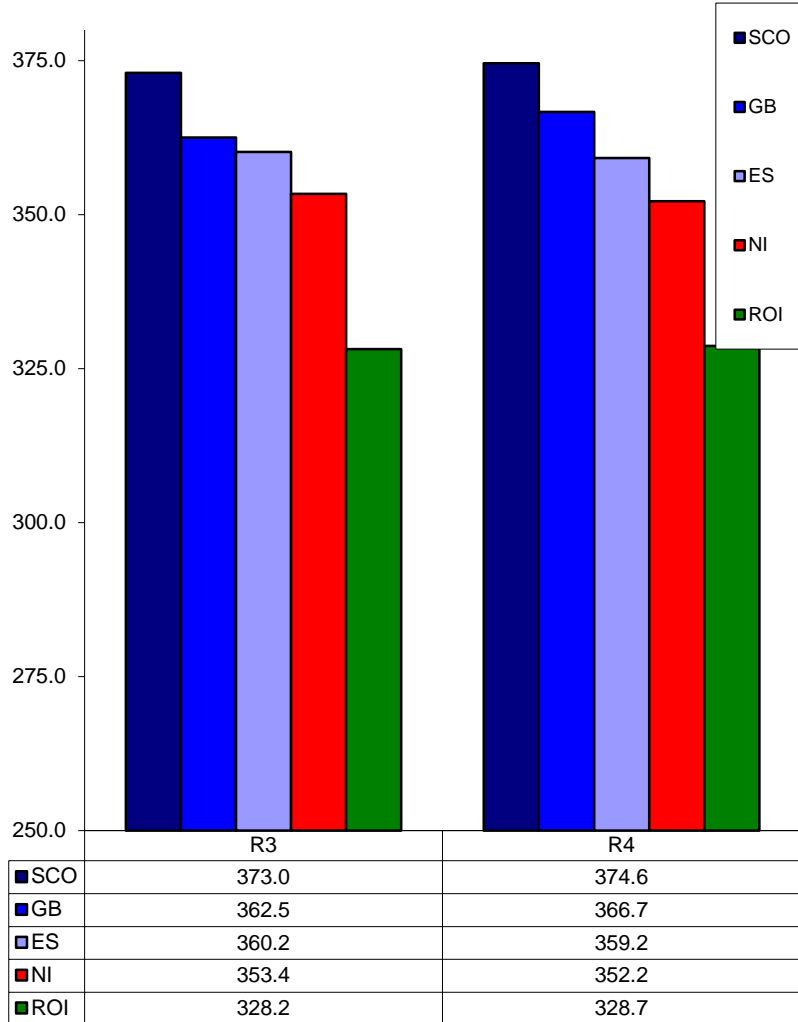
British Isles R4 Steer Price

52 Weeks to 29 July 2017



British Isles Average R3 and R4 Steer price

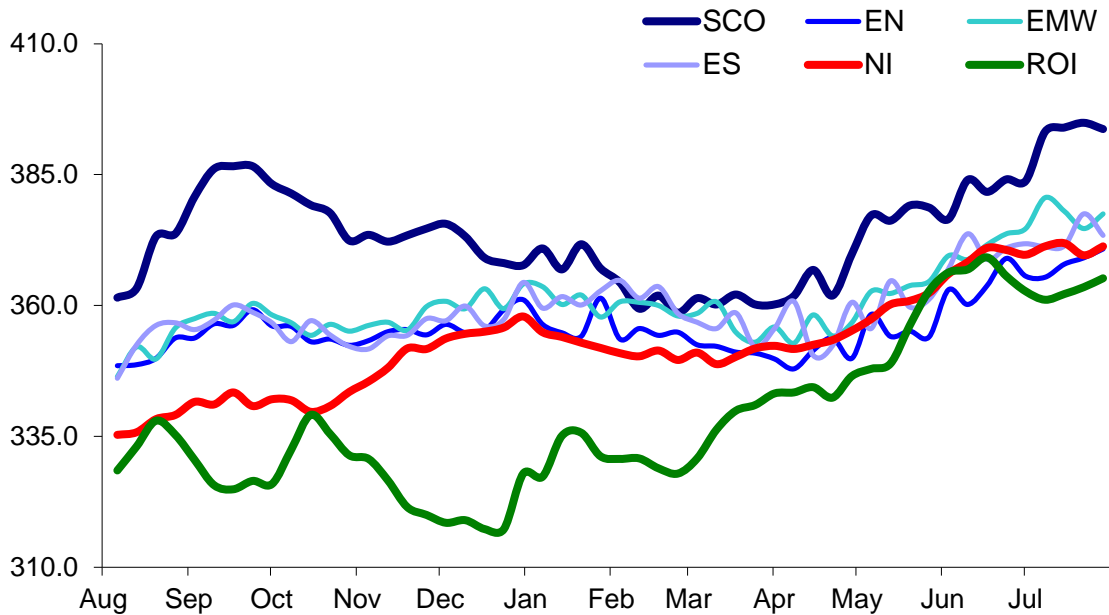
52 Weeks to 29 July 2017



Prices relate to UK Dressing Specification

British Isles R3 Heifer Price

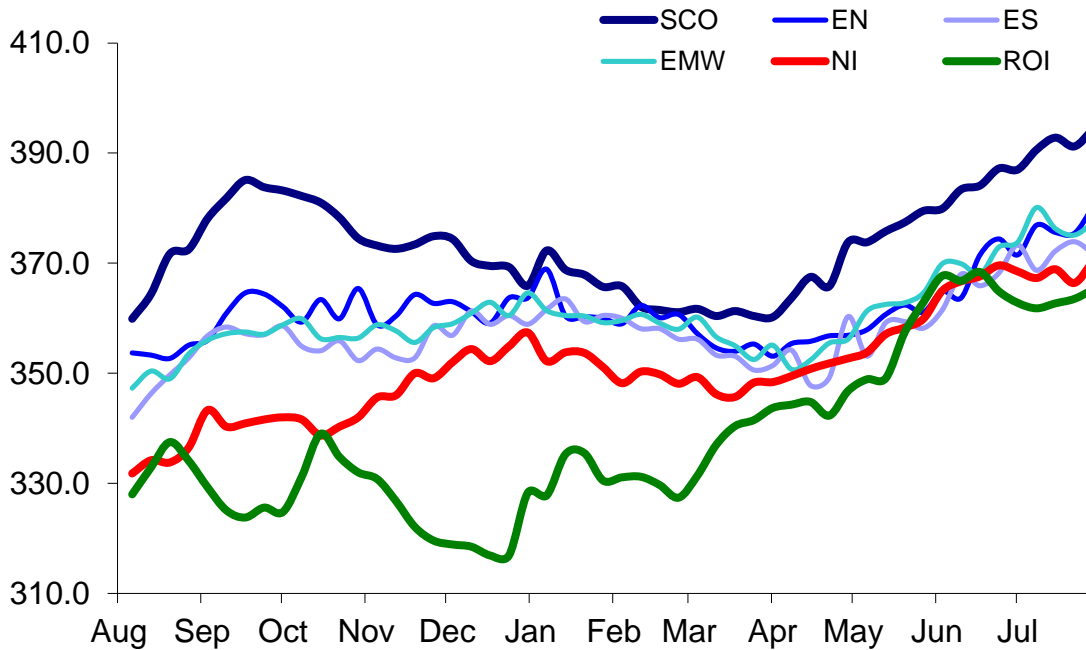
52 Weeks to 29 July 2017



Prices relate to UK Dressing Specification

British Isles R4 Heifer Price

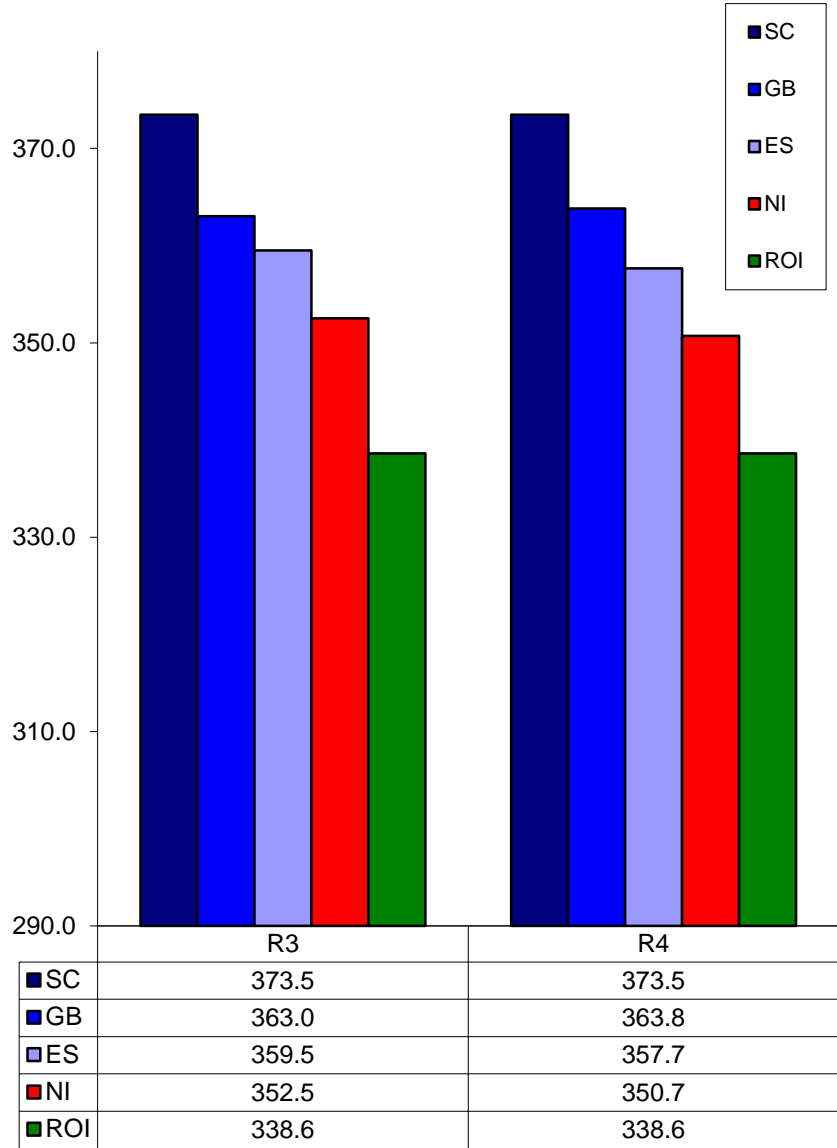
52 Weeks to 29 July 2017



Prices relate to UK Dressing Specification

British Isles Average R3 and R4 Heifer price

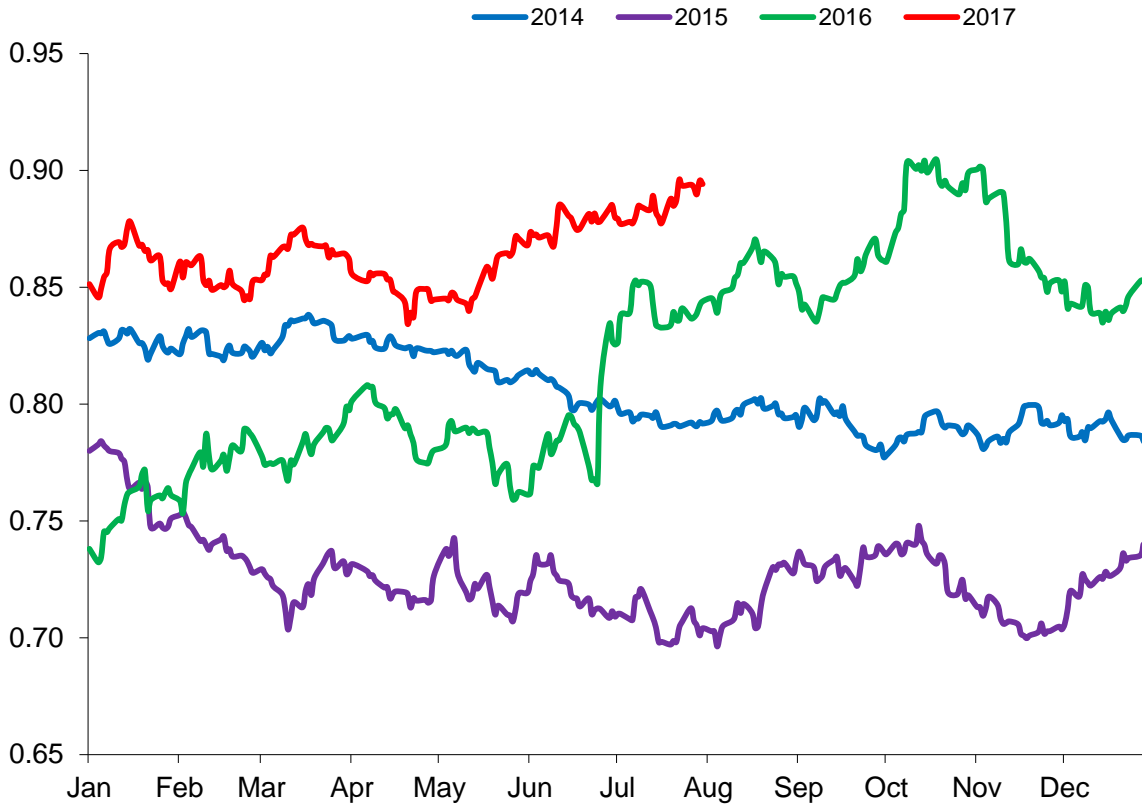
52 Weeks to 29 July 2017



Prices relate to UK Dressing Specification

Exchange Rate £ / Euro

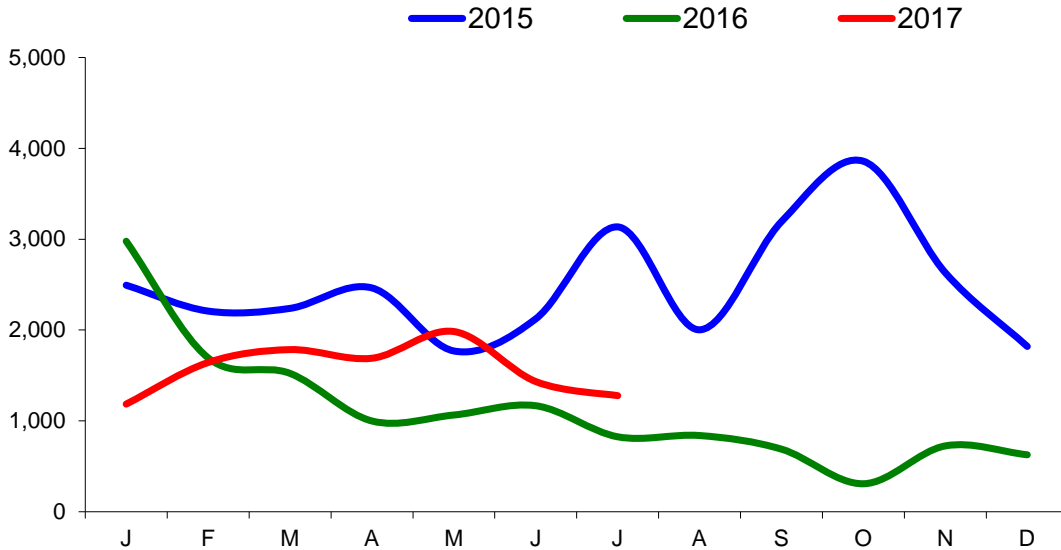
01 January 2014 –31 July 2017



Imports

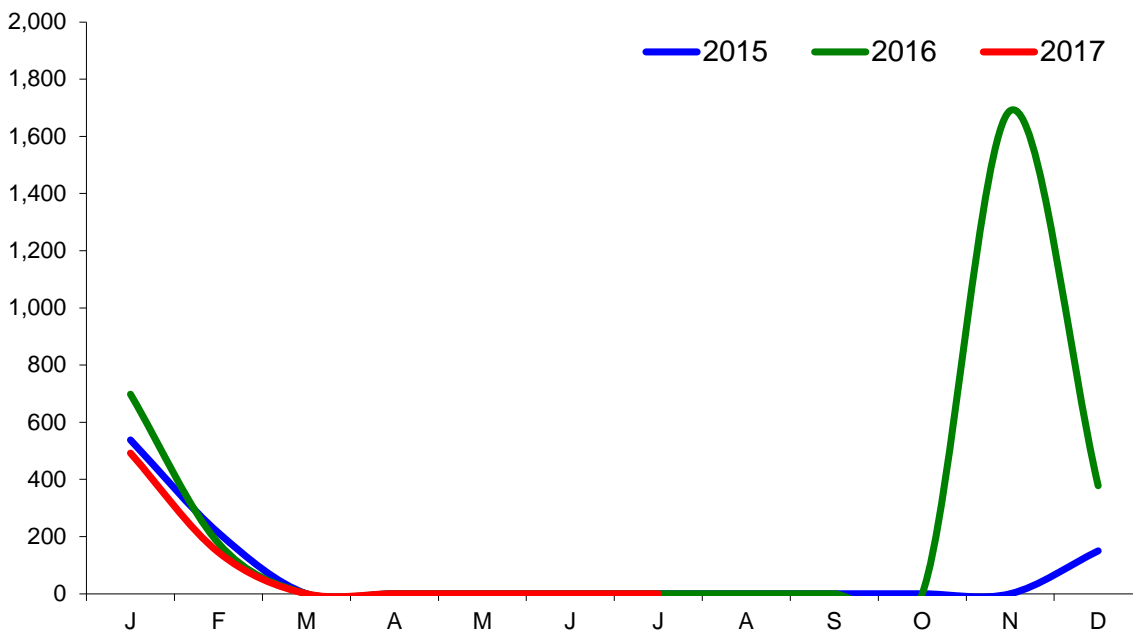
Monthly Live Imports of Cattle into NI for Direct Slaughter

From ROI and GB Combined



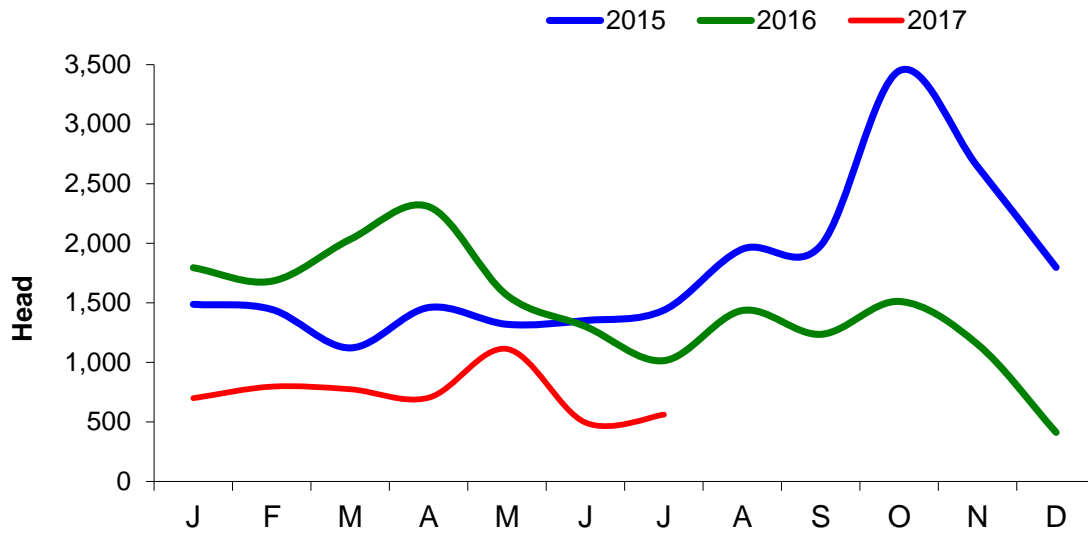
Monthly Live Imports of Sheep into NI for Direct Slaughter

From ROI and GB Combined



Exports

Monthly Live Exports of Cattle from NI into ROI and GB



Monthly Live Exports of Sheep from NI into ROI and GB

