



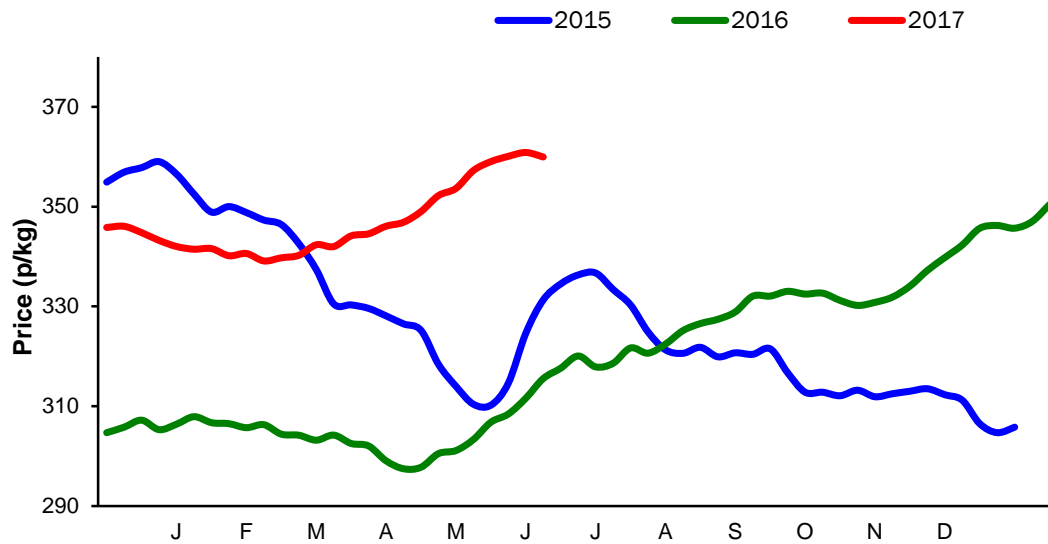
Monthly Economic Review
June 2017

Contents

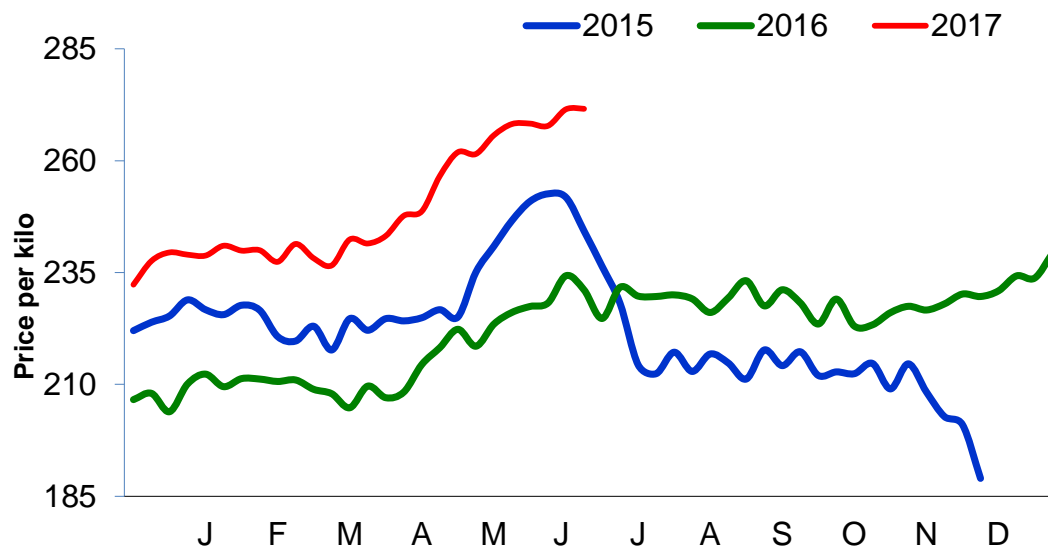
Contents.....	2
Cattle Prices	4
Average NI Clean Cattle Price	4
Average NI Cow Price.....	4
Cattle Slaughtering.....	5
NI Clean Cattle Slaughtering – Cumulative	5
NI Weekly Clean Cattle Slaughtering.....	5
NI Weekly Cow Slaughtering	5
Sheep Prices.....	6
Average NI Lamb / Hogget Price	6
Sheep Slaughtering.....	7
Cumulative Lamb & Hogget Slaughtering	7
Total Weekly Lamb & Hogget Slaughtering	7
Total Weekly Ewe and Ram Slaughtering.....	7
Total Carcase Weight Produced for the Food Chain.....	8
Change in Throughput / Production	9
Supply and Price.....	10
NI Lamb/Hogget Kill vs. Average Lamb / Hogget Price	10
NI Clean Cattle Kill vs. Average Clean Cattle Price.....	10
British Isles Price Comparisons	11
UK Average Cow Prices	11
Weekly UK Cow Prices	11
British Isles R3 Steer Price	12
British Isles R4 Steer Price	12
British Isles Average R3 and R4 Steer price	13
British Isles R3 Heifer Price	14
British Isles R4 Heifer Price	14
British Isles Average R3 and R4 Heifer price.....	15
Exchange Rate £ / Euro	16
Imports.....	17
Monthly Live Imports of Cattle into NI for Direct Slaughter	17
Monthly Live Imports of Sheep into NI for Direct Slaughter	17
Exports	18
Monthly Live Exports of Cattle from NI into RoI and GB.....	18
Monthly live Exports of Sheep from NI into RoI and GB	18

Cattle Prices

Average NI Clean Cattle Price

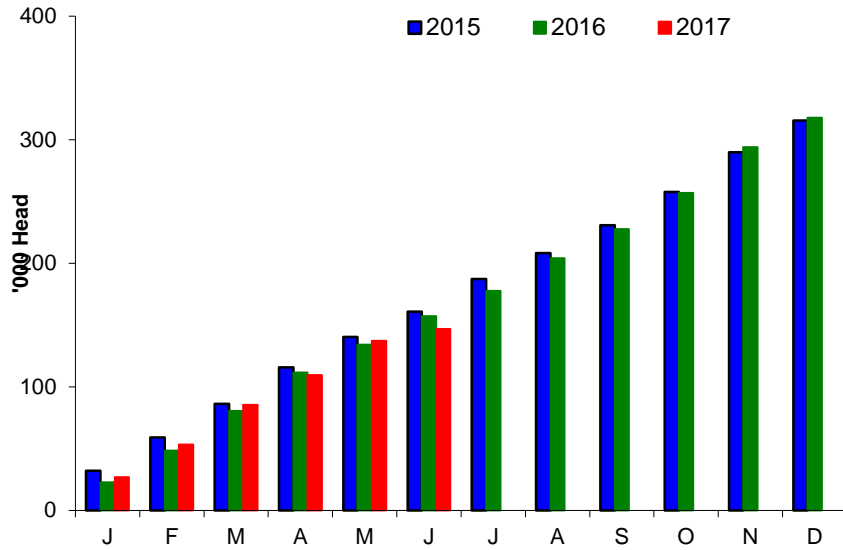


Average NI Cow Price

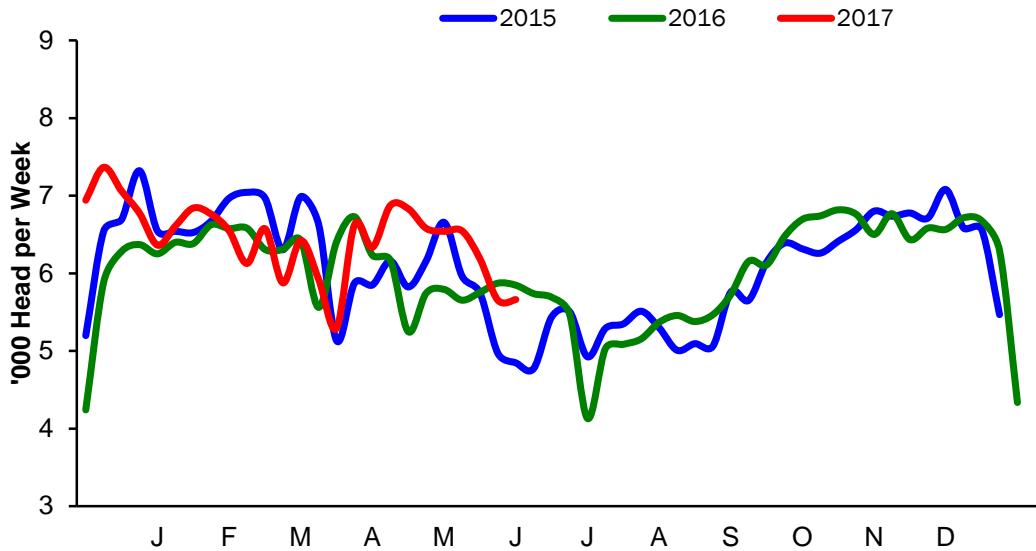


Cattle Slaughtering

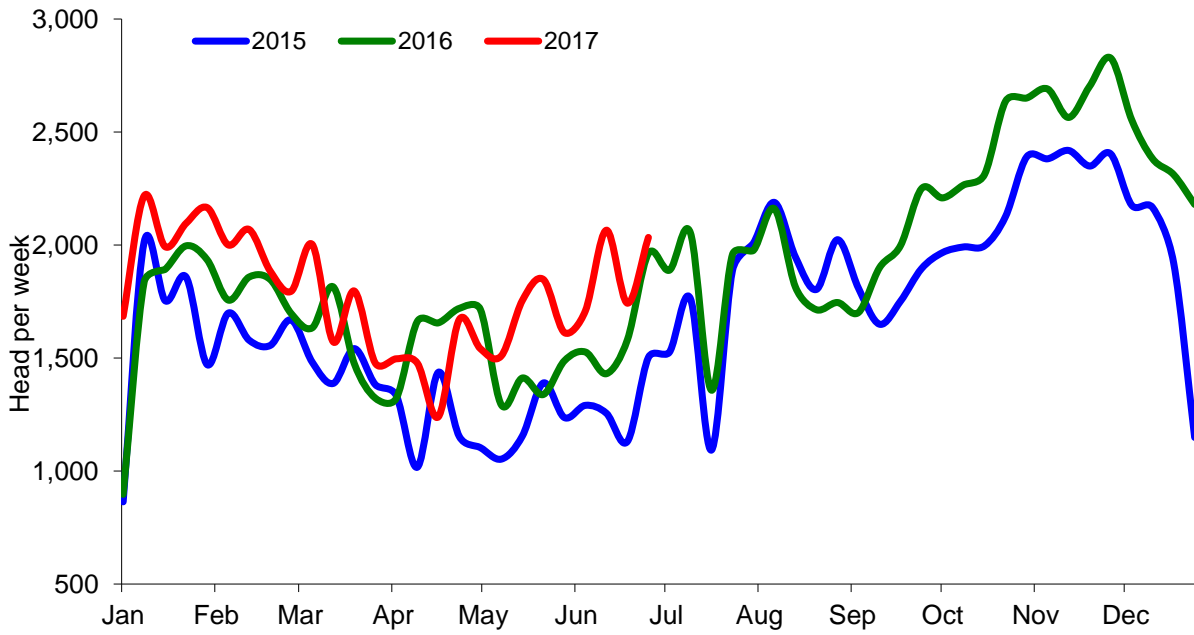
NI Clean Cattle Slaughtering – Cumulative



NI Weekly Clean Cattle Slaughtering

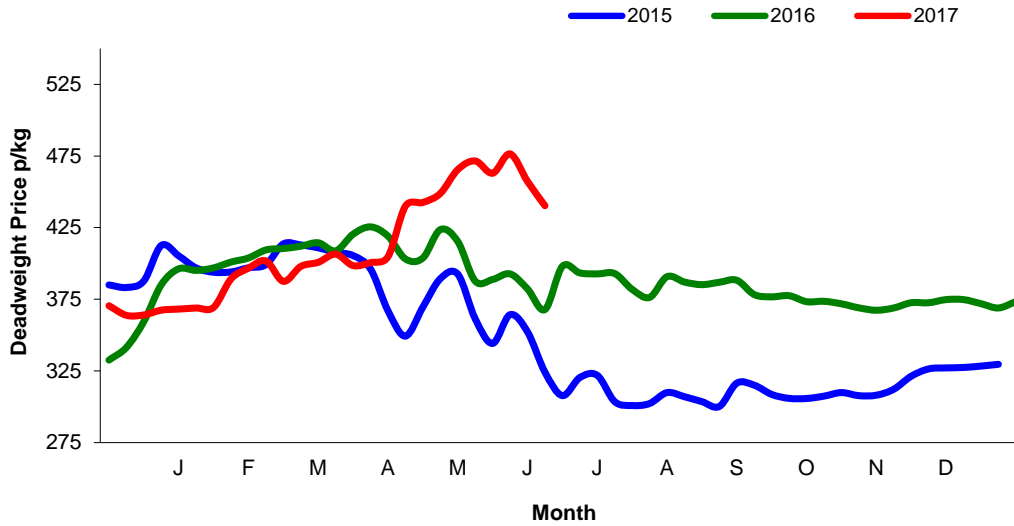


NI Weekly Cow Slaughtering



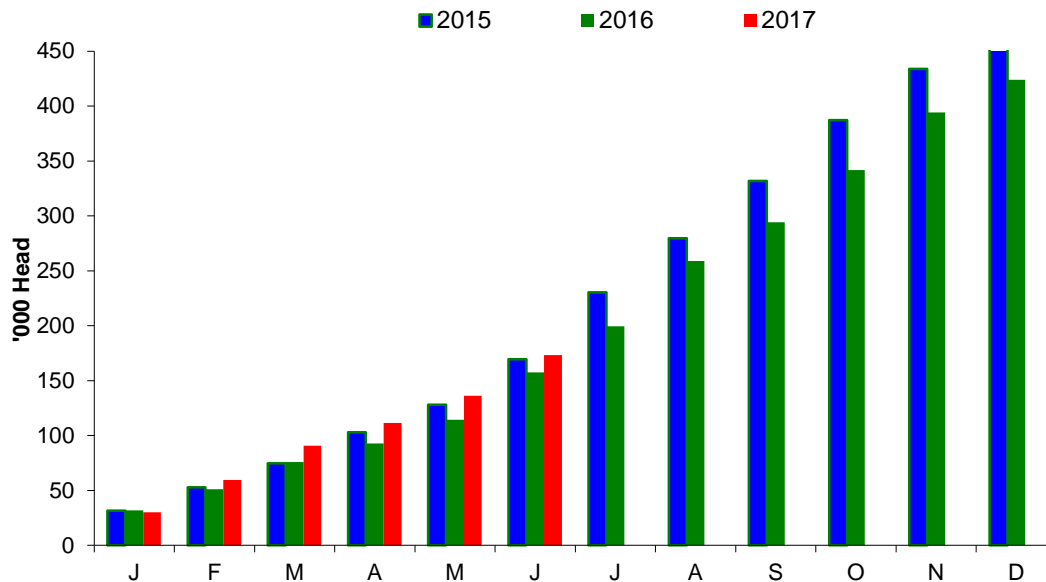
Sheep Prices

Average Deadweight NI Hogget / Lamb Price

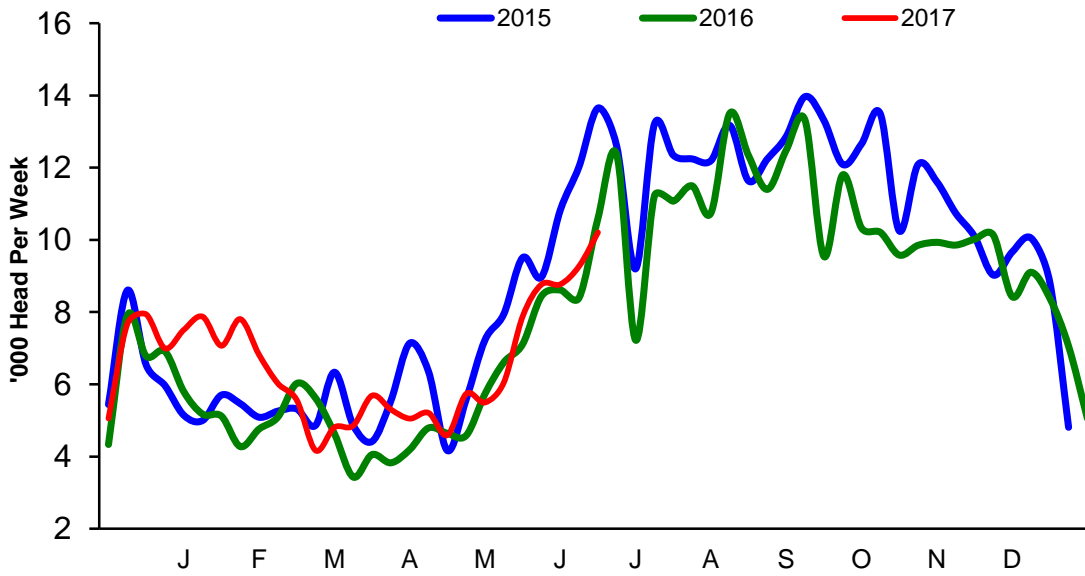


Sheep Slaughterings

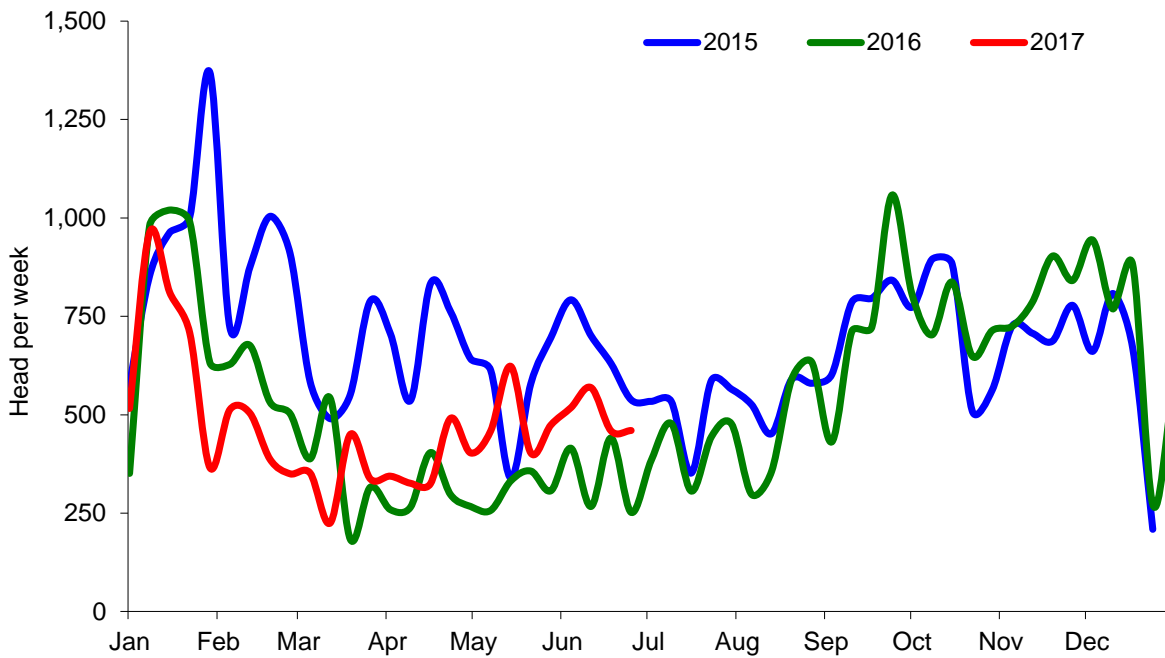
Cumulative Lamb & Hogget Slaughterings



Total Weekly Lamb & Hogget Slaughtering



Total Weekly Ewe and Ram Slaughtering



Market Information June 2017

Page 8

NI CATTLE AND SHEEP SLAUGHTERINGS FOR THE FOODCHAIN						
	June			Year to Date		
	(4 weeks ended 01/07/17)			(13 weeks ended 01/07/17)		
	Jun-16	Jun-17	% Change	2016	2017	Change
CATTLE						
Steers	11,242	11,213	-0%	38,111	39,673	+4%
Heifers	8,032	8,679	+8%	27,498	31,067	+13%
Young Bulls / Calves	3,876	4,158	+7%	11,273	10,734	-5%
Total Prime Cattle	23,150	24,050	+4%	76,882	81,474	+6%
Calves	499	412	-17%	1,764	1,307	-26%
Cows	6,864	7,552	+10%	20,677	21,706	+5%
Mature Bulls	312	295	-5%	1,059	874	-17%
Total Cattle	30,825	32,309	+5%	100,382	105,361	+5%
SHEEP						
Lambs & Hoggets	36,050	37,014	+3%	81,593	88,017	+8%
Ewes & Rams	1,344	2,006	+49%	4,245	5,854	+38%
Total Sheep	37,394	39,020	+4%	85,838	93,871	+9%
The above figures are provisional; any amendments will be incorporated in the cumulative data (source DAERA).						

NI BEEF AND SHEEPMEAT PRODUCTION - FOODCHAIN						
	June			Year to Date		
	(4 weeks ended 01/07/17)			(13 weeks ended 01/07/17)		
	Jun-16	Jun-17	% Change	2016	2017	Change
BEEF						
Steers	3,975	3,916	-1%	13,514	13,799	+2%
Heifers	2,562	2,722	+6%	8,763	9,728	+11%
Young Bulls	1,300	1,389	+7%	3,706	3,533	-5%
Total Prime Beef	7,837	8,027	+2%	25,983	27,060	+4%
Calves	117	85	-27%	379	239	-37%
Cows	2,147	2,292	+7%	6,381	6,545	+3%
Mature Bulls	138	132	-4%	461	400	-13%
Total Beef	12,031	13,763	+14%	22,965	9,946	-57%
SHEEPMEAT						
Lambs & Hoggets	762	773	+1%	1,747	1,890	+8%
Ewes & Rams	41	60	+46%	129	175	+36%
Total Sheepmeat	803	833	+4%	1,876	2,065	+10%
The above figures are provisional; any amendments will be incorporated in the cumulative data (source DAERA).						

Market Information June 2017
Page 9

Total Carcase Weight Produced for the Food Chain
Year-to-Date (tonnes – t.)

Month	Prime Cattle		Cows & Bulls		Lambs/Hoggets		Ewes & Rams	
	2016	2017	2016	2017	2016	2017	2016	2017
January	8,471	9,001	2,489	2,527	599	675	98	82
February	8,906	8,854	2,334	2,581	422	666	61	50
March	10,704	10,578	2,466	2,695	551	582	47	49
April	8,617	8,019	2,188	1,850	367	475	37	45
May	9,529	11,014	2,369	2,670	619	642	50	70
June	7,837	8,027	2,286	2,424	762	773	41	60
July								
August								
September								
October								
November								
December								
Total	54,064	55,494	14,131	14,748	3,319	3,814	334	356
Change (t.)	1,429		617		495		21	
% Change	2.64%		4.37%		14.90%		6.40%	

**excludes calves*

Change in Throughput / Production

Last 4 weeks 2016/2017

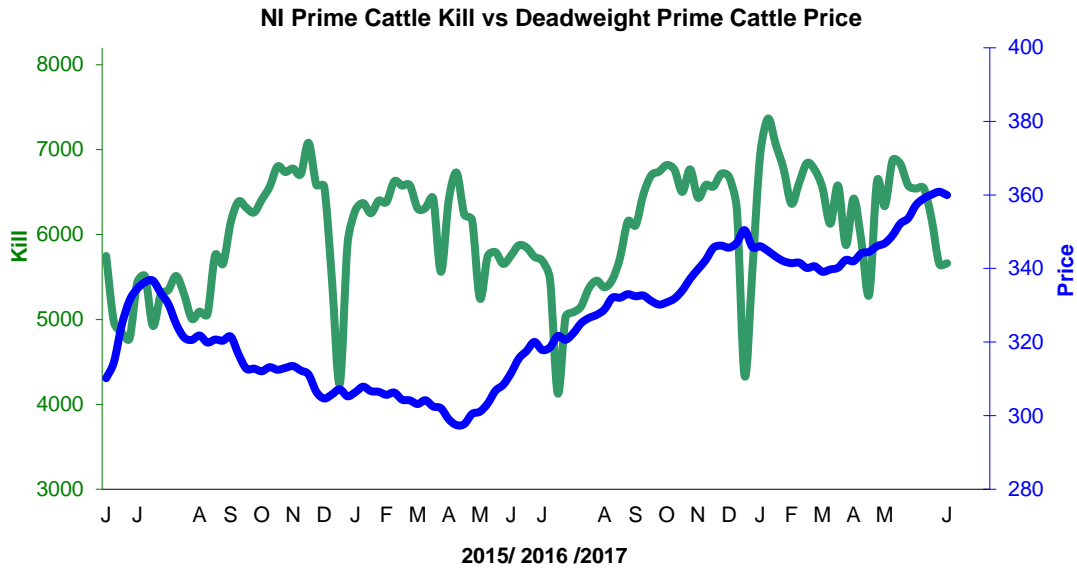
Change in Throughput / Production 2016/2017

June

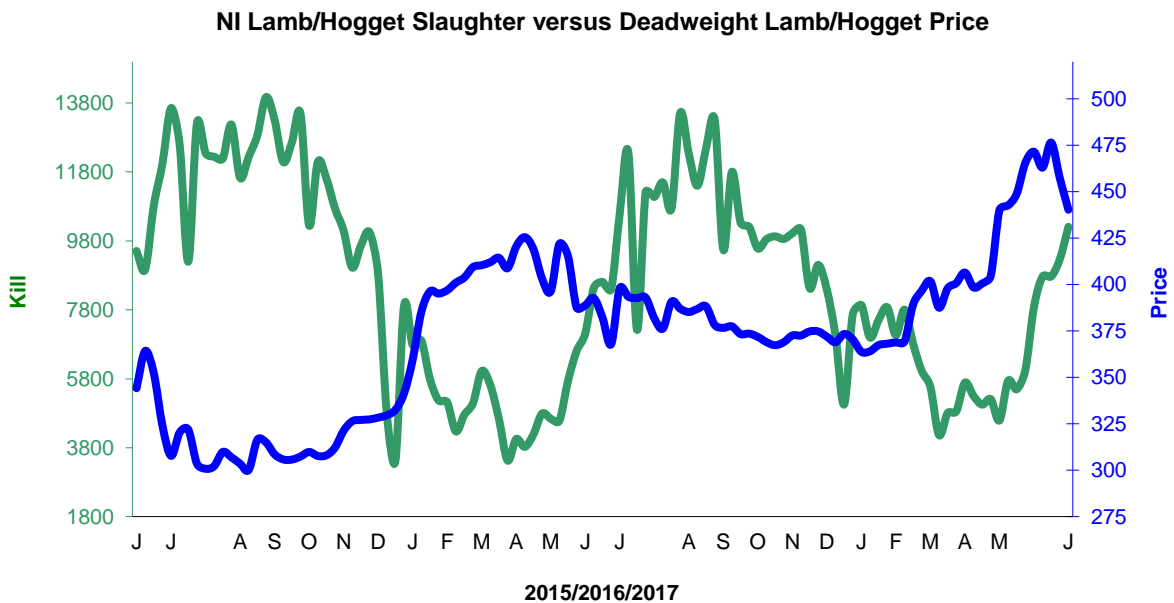
2016/2017	Number	Tonnage	ACW Kg
Prime	3.9%	2.4%	-4.99
Cows	10.0%	6.7%	-9.28
Total	4.8%	2.9%	-6.44
Lamb	2.7%	1.4%	-0.28
Ewes and Rams	49.3%	45.8%	-0.48
Total Sheep	4.3%	3.6%	-0.15

Supply and Price

NI Clean Cattle Kill vs. Average Clean Cattle Price



NI Lamb/Hogget Kill vs. Average Lamb / Hogget Price

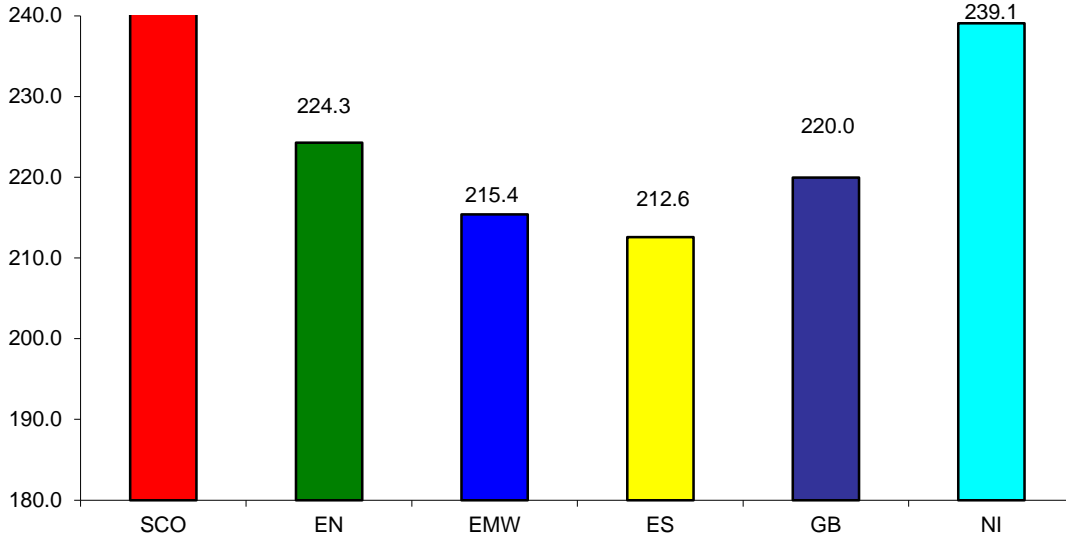


Green	Supply (Kill)
Blue	Price

BRITISH ISLES COMPARISONS

UK Average Cow Prices

52 Weeks to 30 June 2017

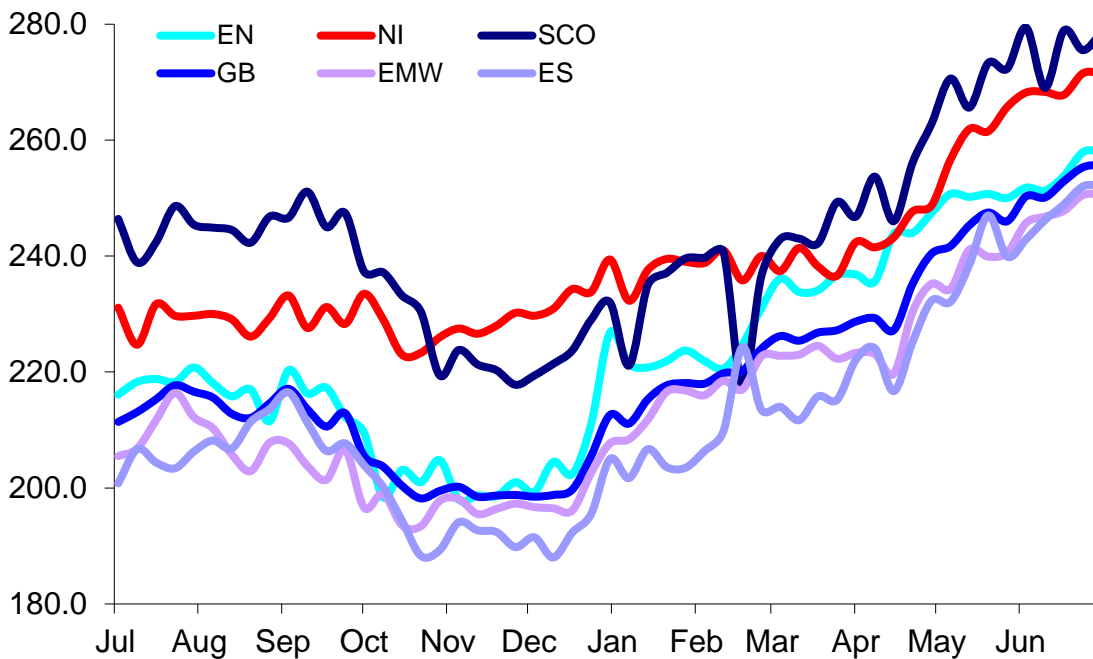


SCO	Scotland
EN	England North
EMW	England Midlands and Wales
ES	England South
NI	Northern Ireland
GB	Great Britain

Prices relate to UK Dressing Specification

Weekly UK Cow Prices

52 Weeks to 30 June 2017



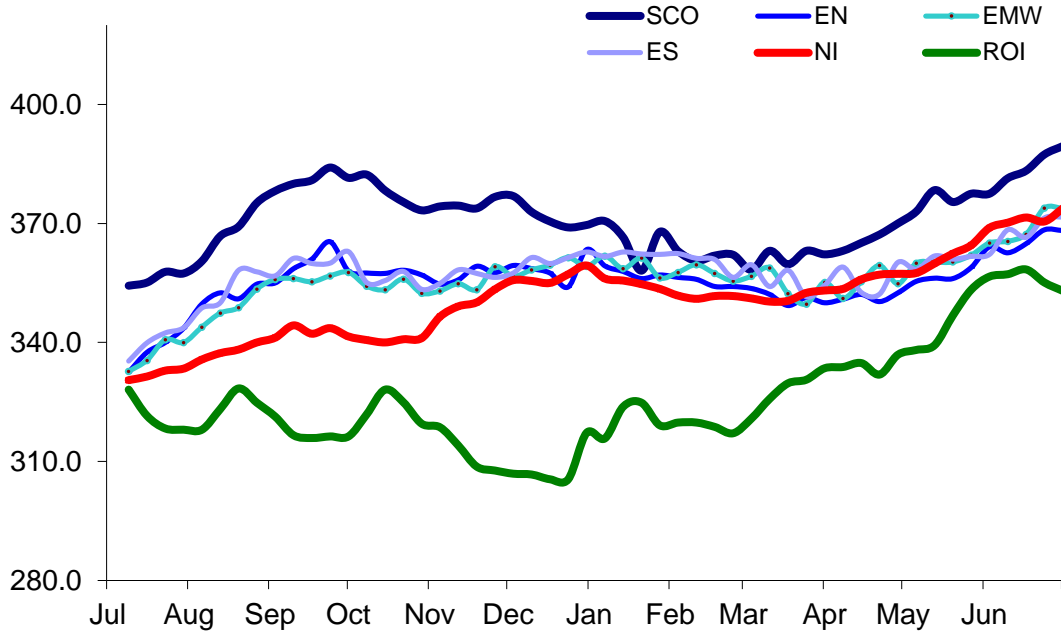
Market Information June 2017

Page 12

Prices relate to UK Dressing Specification

British Isles R3 Steer Price

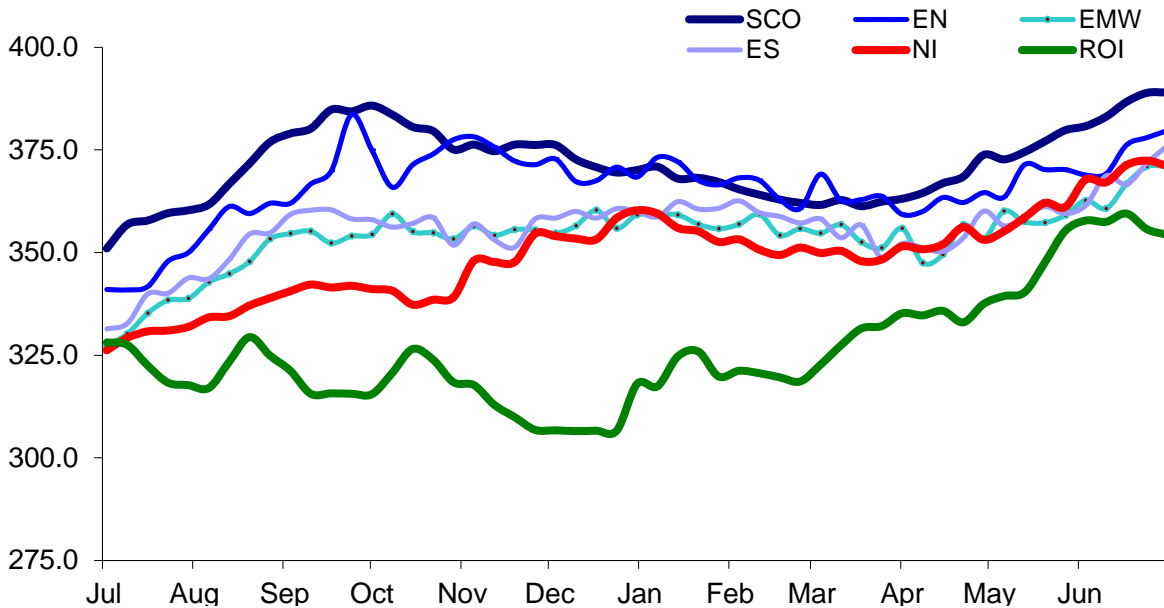
52 Weeks to 30 June 2017



Prices relate to UK Dressing Specification

British Isles R4 Steer Price

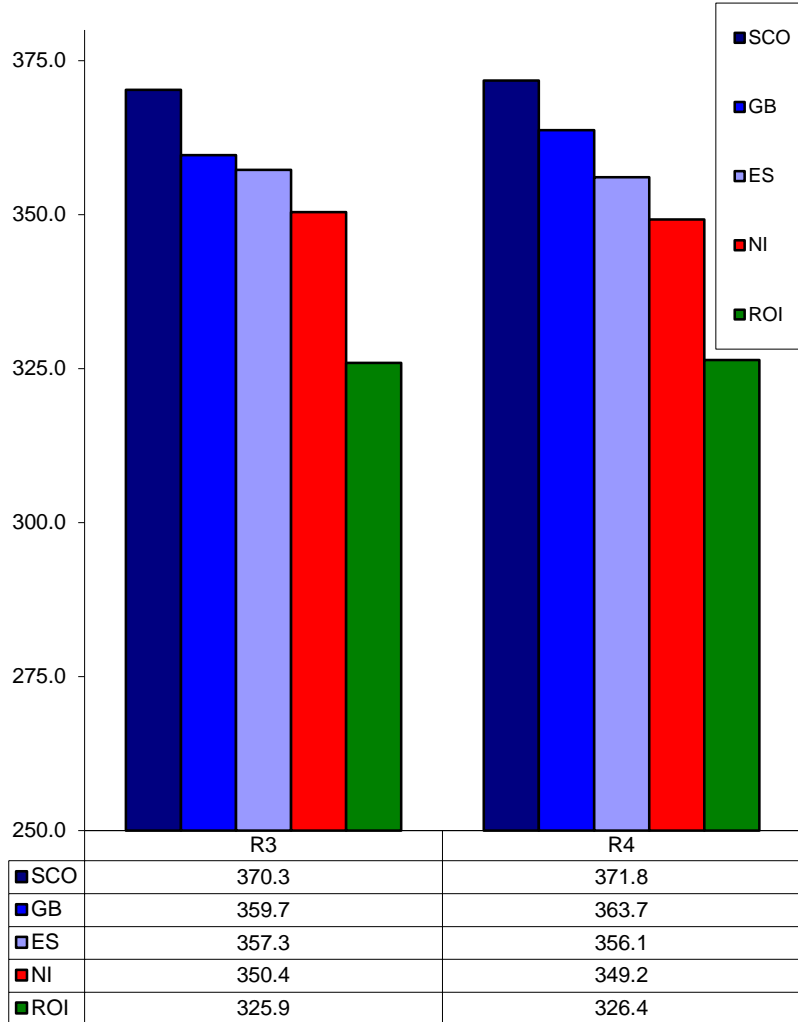
52 Weeks to 30 June 2017



Prices relate to UK Dressing Specification

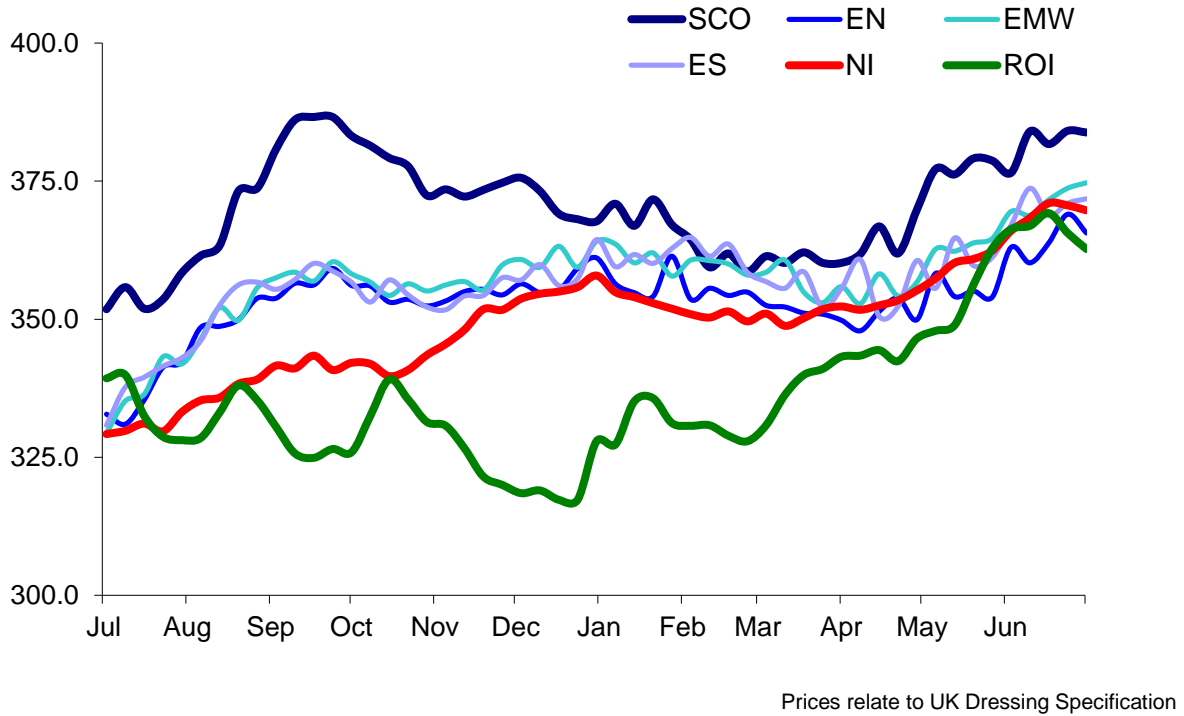
British Isles Average R3 and R4 Steer price

52 Weeks to 30 June 2017

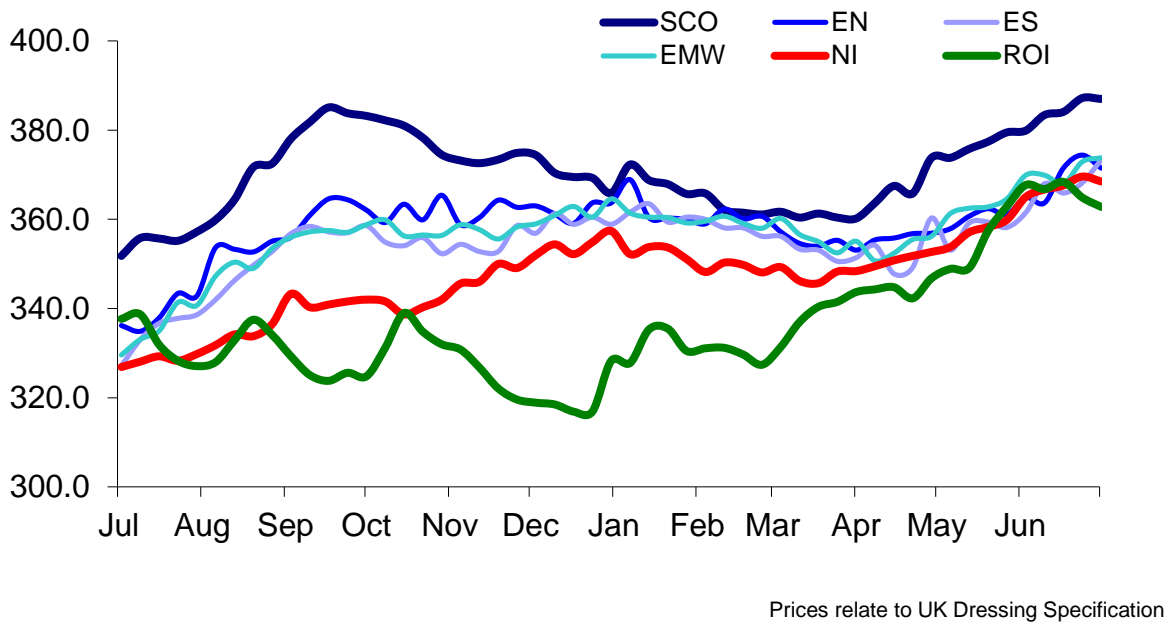


Prices relate to UK Dressing Specification

British Isles R3 Heifer Price
52 Weeks to 30 June 2017

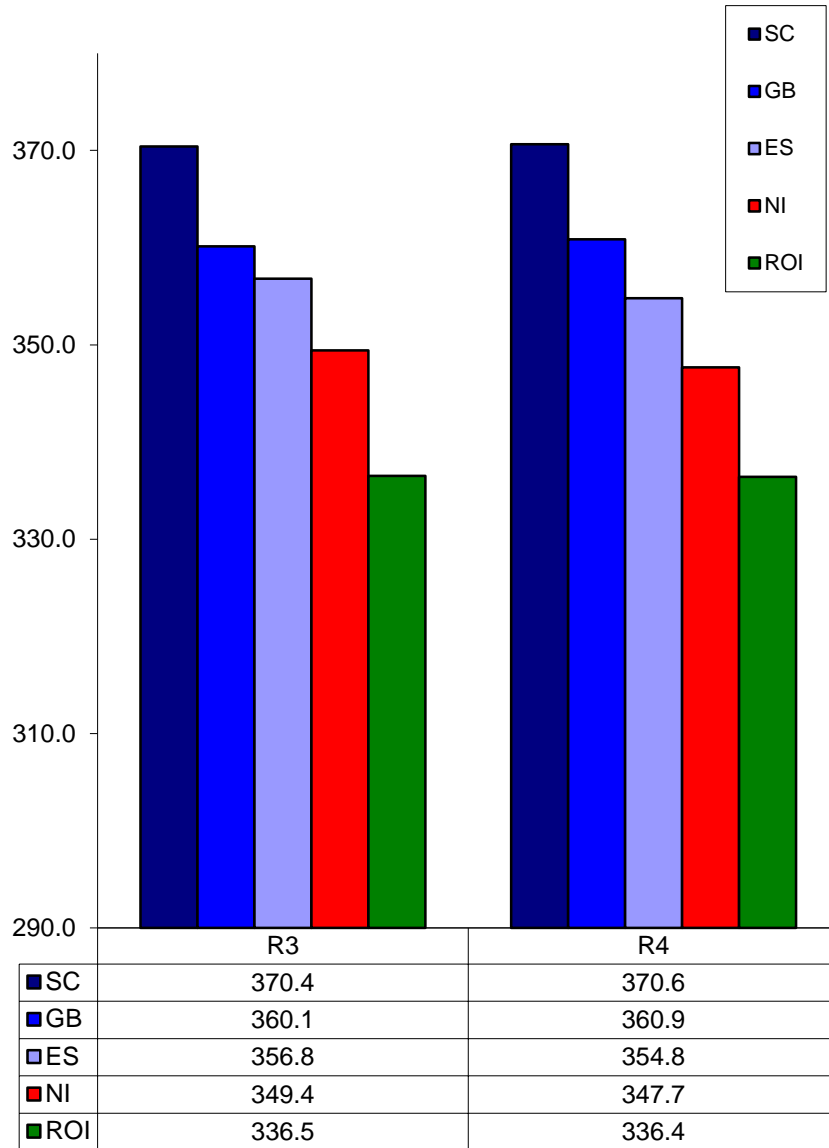


British Isles R4 Heifer Price
52 Weeks to 30 June 2017



British Isles Average R3 and R4 Heifer price

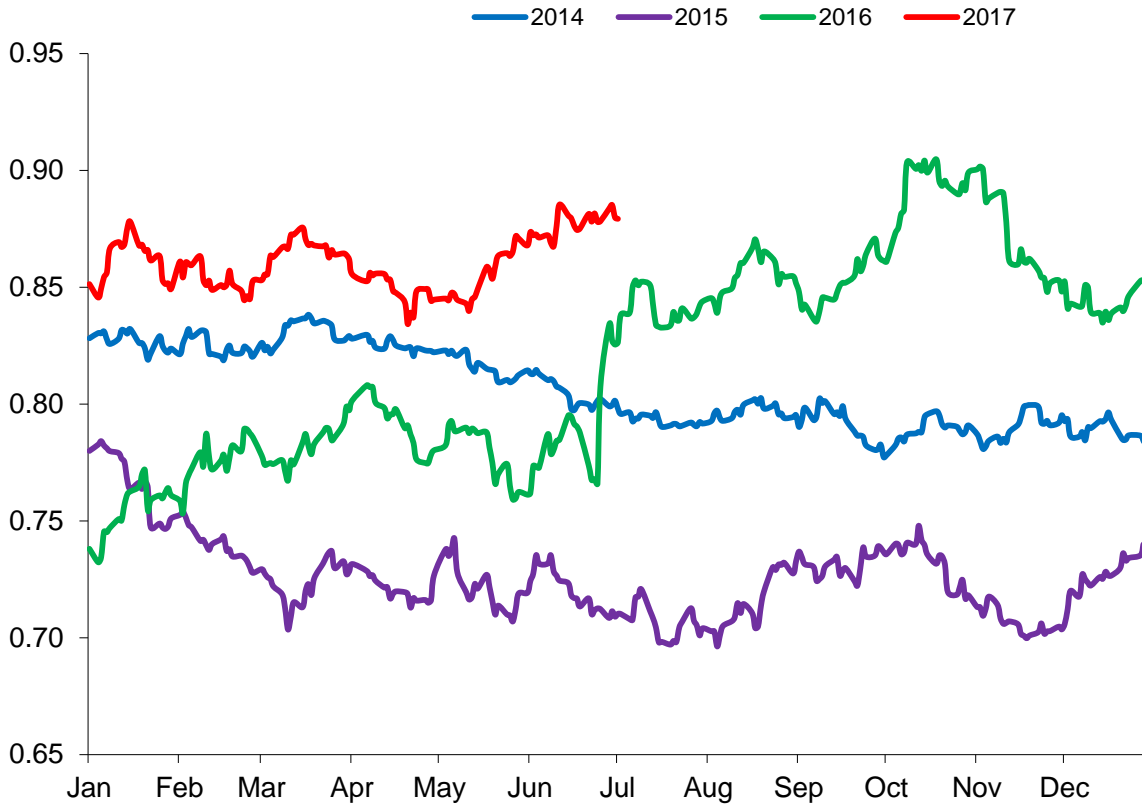
52 Weeks to 30 June 2017



Prices relate to UK Dressing Specification

Exchange Rate £ / Euro

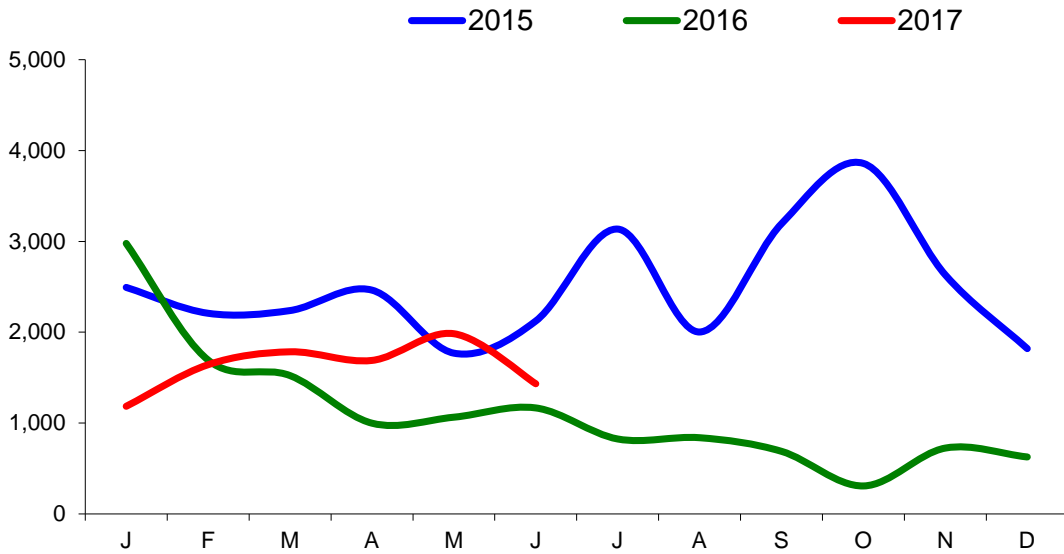
01 January 2014 –30 June 2017



Imports

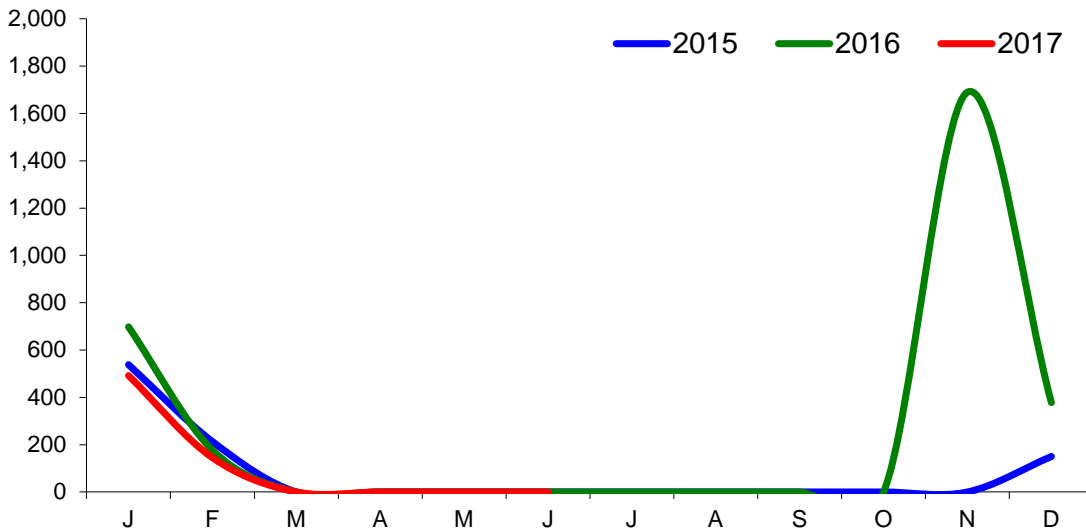
Monthly Live Imports of Cattle into NI for Direct Slaughter

From ROI and GB Combined



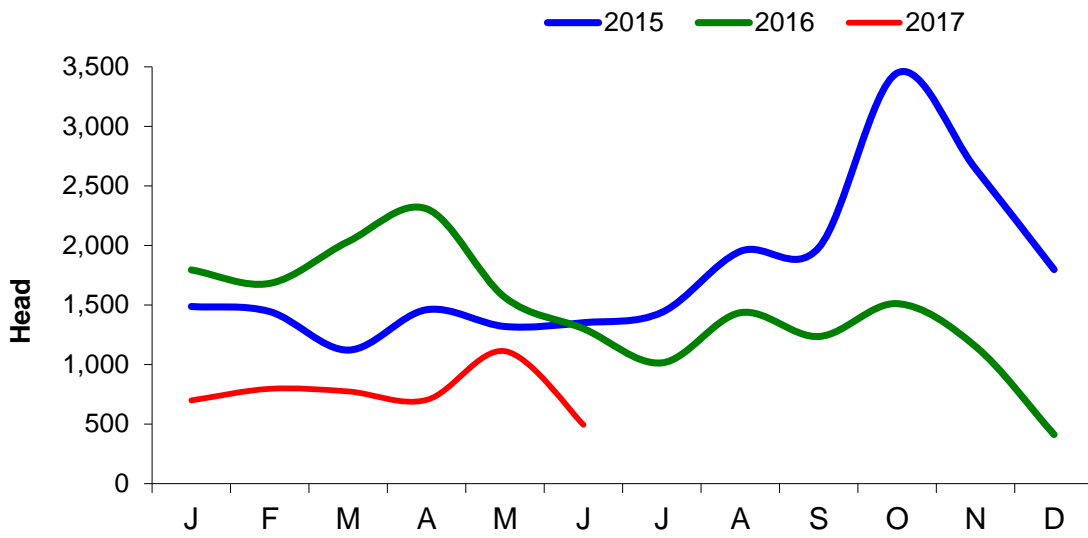
Monthly Live Imports of Sheep into NI for Direct Slaughter

From ROI and GB Combined



Exports

Monthly Live Exports of Cattle from NI into ROI and GB



Monthly Live Exports of Sheep from NI into ROI and GB

