

LMC

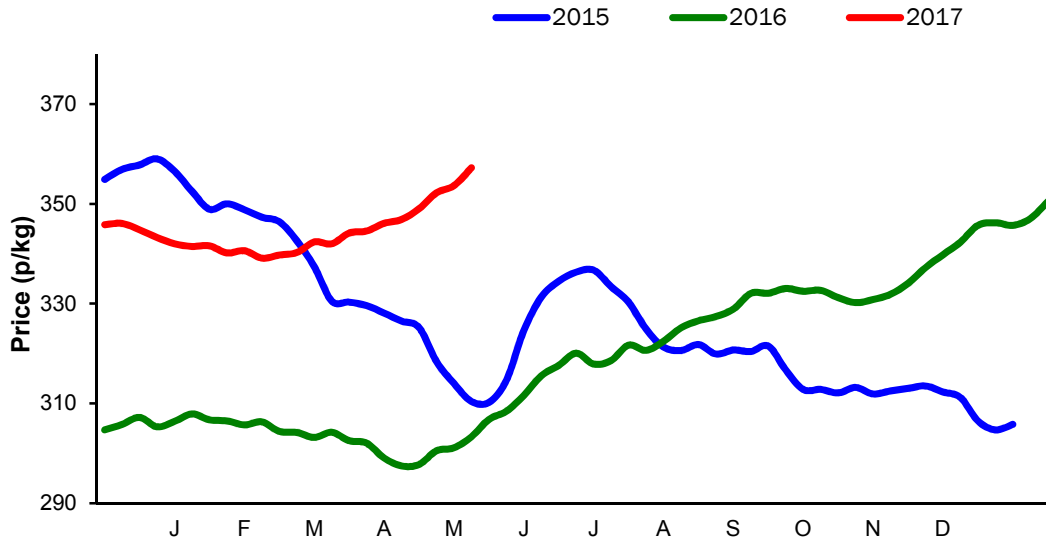
**Monthly Economic Review
May 2017**

Contents

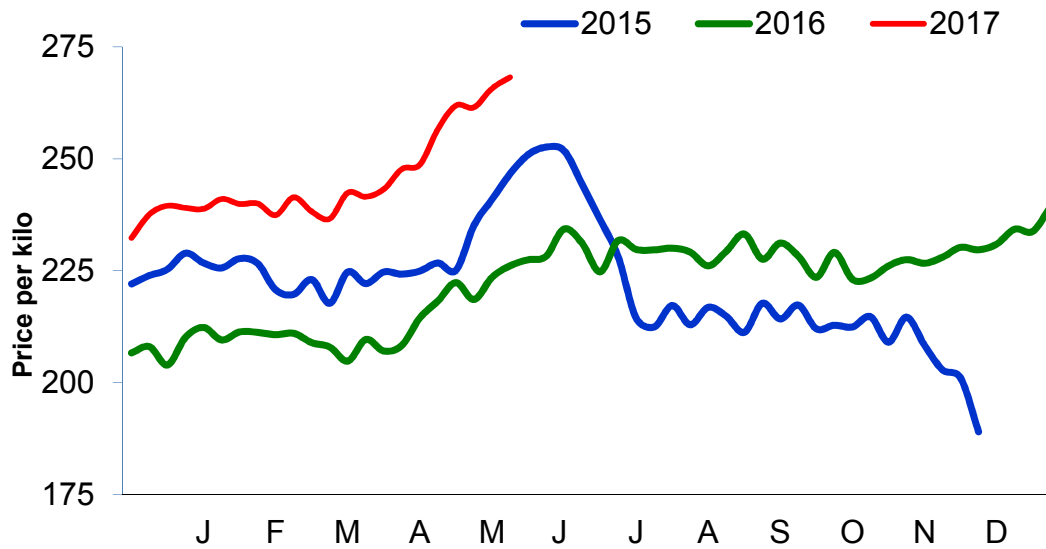
Contents.....	2
Cattle Prices	4
Average NI Clean Cattle Price	4
Average NI Cow Price.....	4
Cattle Slaughtering.....	5
NI Clean Cattle Slaughtering – Cumulative	5
NI Weekly Clean Cattle Slaughtering.....	5
NI Weekly Cow Slaughtering	5
Sheep Prices.....	6
Average NI Lamb / Hogget Price	6
Sheep Slaughtering.....	7
Cumulative Lamb & Hogget Slaughtering	7
Total Weekly Lamb & Hogget Slaughtering	7
Total Weekly Ewe and Ram Slaughtering.....	7
Total Carcase Weight Produced for the Food Chain.....	8
Change in Throughput / Production	9
Supply and Price.....	10
NI Lamb/Hogget Kill vs. Average Lamb / Hogget Price	10
NI Clean Cattle Kill vs. Average Clean Cattle Price.....	10
British Isles Price Comparisons	11
UK Average Cow Prices	11
Weekly UK Cow Prices	11
British Isles R3 Steer Price	12
British Isles R4 Steer Price	12
British Isles Average R3 and R4 Steer price	13
British Isles R3 Heifer Price	14
British Isles R4 Heifer Price	14
British Isles Average R3 and R4 Heifer price.....	15
Exchange Rate £ / Euro	16
Imports.....	17
Monthly Live Imports of Cattle into NI for Direct Slaughter	17
Monthly Live Imports of Sheep into NI for Direct Slaughter	17
Exports	18
Monthly Live Exports of Cattle from NI into RoI and GB	18
Monthly live Exports of Sheep from NI into RoI and GB	18

Cattle Prices

Average NI Clean Cattle Price

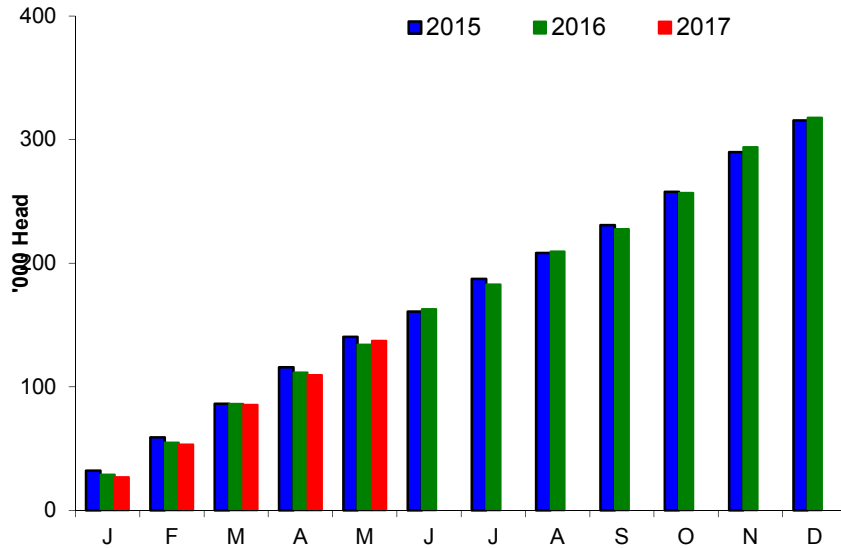


Average NI Cow Price

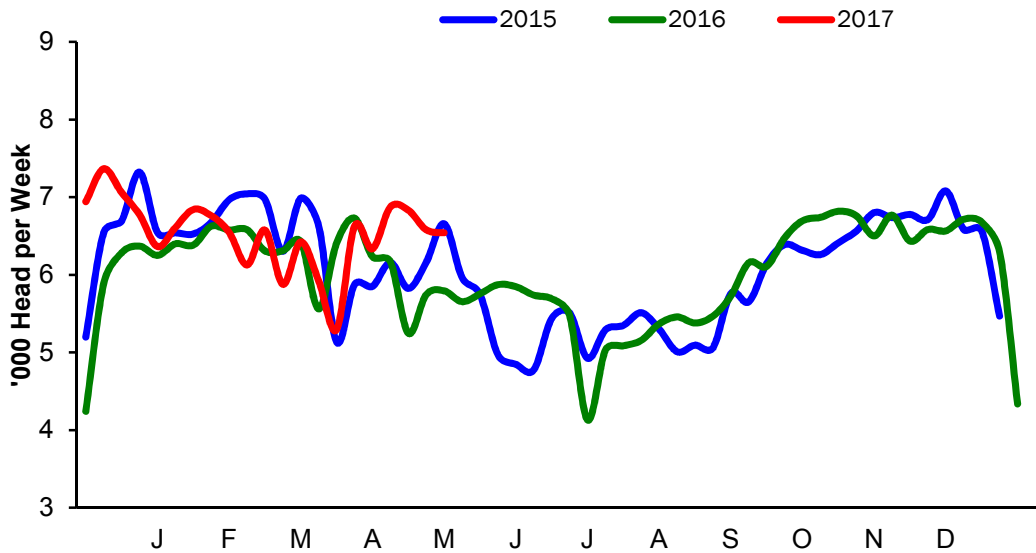


Cattle Slaughtering

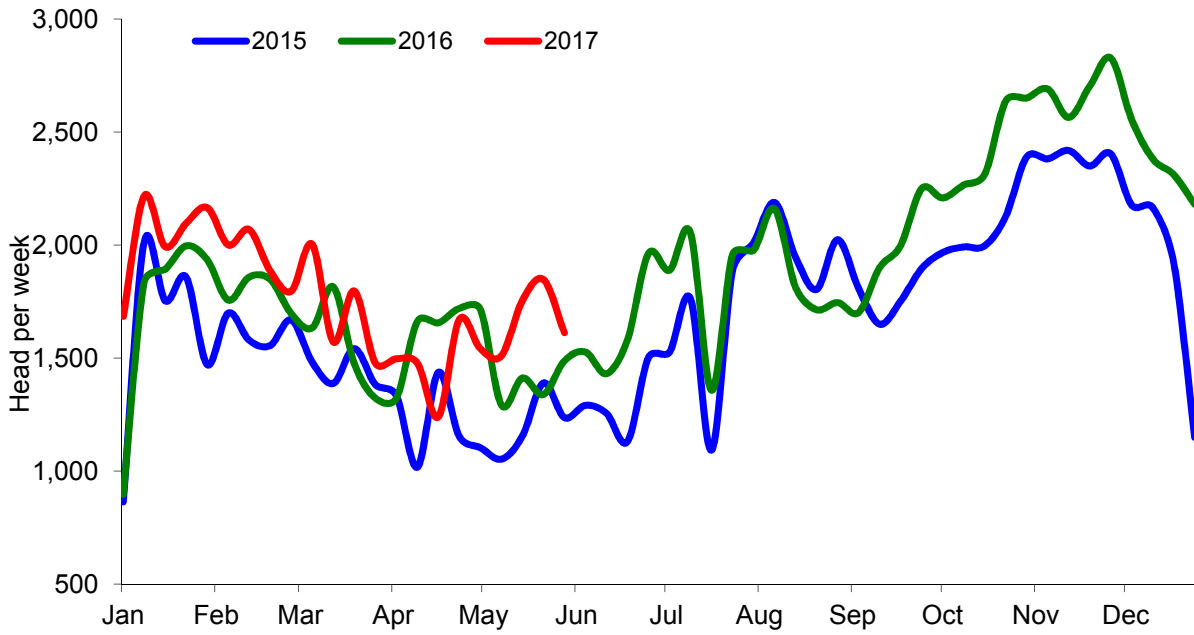
NI Clean Cattle Slaughtering – Cumulative



NI Weekly Clean Cattle Slaughtering

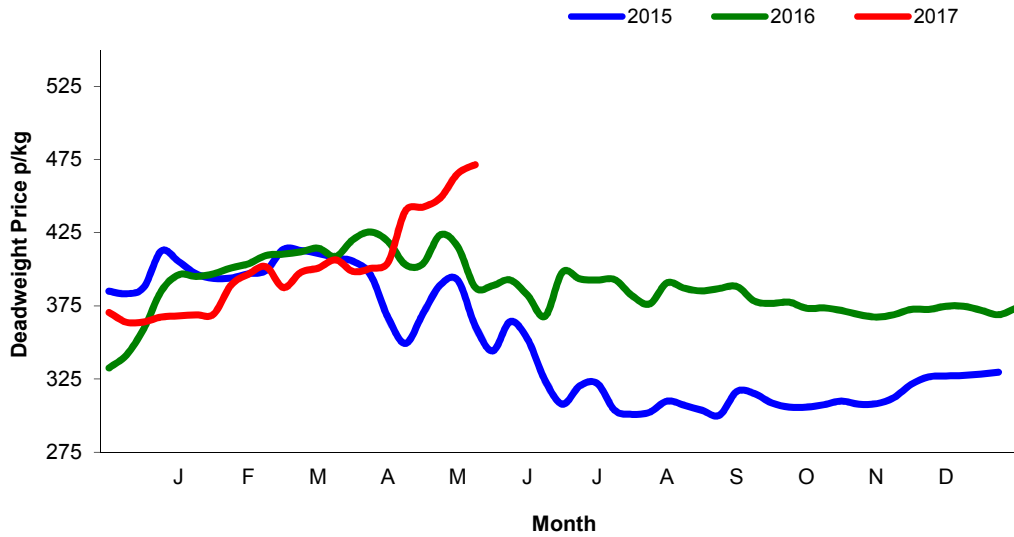


NI Weekly Cow Slaughtering



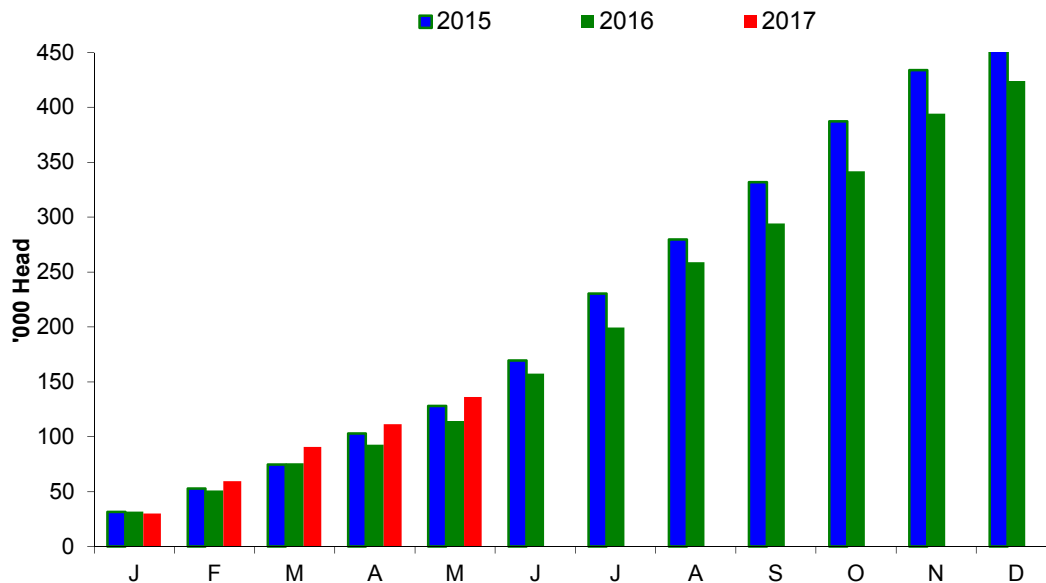
Sheep Prices

Average Deadweight NI Hogget / Lamb Price

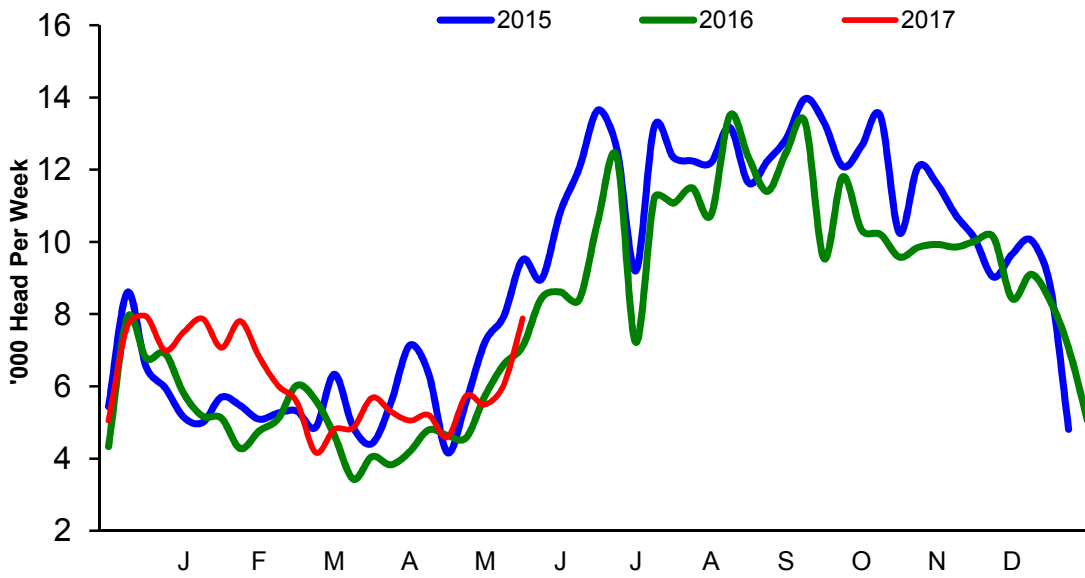


Sheep Slaughterings

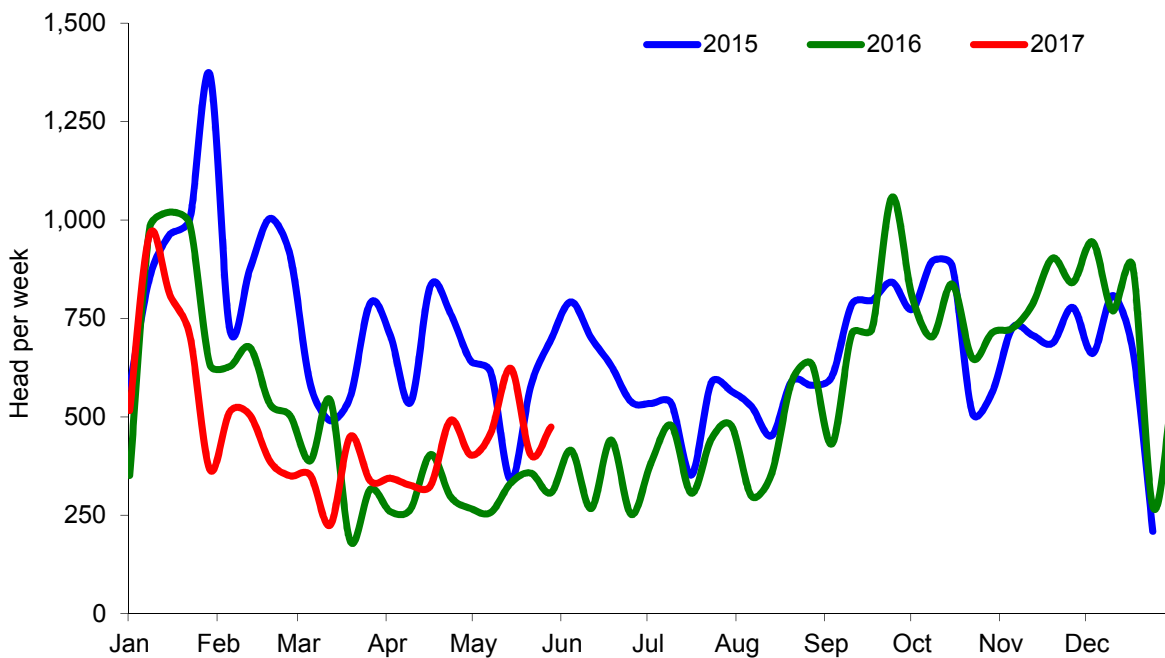
Cumulative Lamb & Hogget Slaughterings



Total Weekly Lamb & Hogget Slaughtering



Total Weekly Ewe and Ram Slaughtering



Market Information May 2017
Page 8

NI CATTLE AND SHEEP SLAUGHTERINGS FOR THE FOODCHAIN						
	May			Year to Date		
	(5 weeks ended 03/06/17)			(9 weeks ended 03/06/17)		
	May-16	May-17	% Change	2016	2017	Change
CATTLE						
Steers	13,678	16,269	+19%	26,869	28,461	+6%
Heifers	10,369	12,812	+24%	19,466	22,388	+15%
Young Bulls / Calves	4,146	4,080	-2%	7,397	6,576	-11%
Total Prime Cattle	28,193	33,161	+18%	53,732	57,425	+7%
Calves	640	454	-29%	1,265	895	-29%
Cows	7,059	8,268	+17%	13,813	14,154	+2%
Mature Bulls	459	325	-29%	747	579	-22%
Total Cattle	36,351	42,208	+16%	69,557	73,053	+5%
SHEEP						
Lambs & Hoggets	28,681	29,752	+4%	45,543	51,003	+12%
Ewes & Rams	1,668	2,362	+42%	2,901	3,848	+33%
Total Sheep	30,349	32,114	+6%	48,444	54,851	+13%

The above figures are provisional; any amendments will be incorporated in the cumulative data (source DAERA).

NI BEEF AND SHEEPMEAT PRODUCTION - FOODCHAIN						
	May			Year to Date		
	(5 weeks ended 03/06/17)			(9 weeks ended 03/06/17)		
	May-16	May-17	% Change	2016	2017	Change
BEEF						
Steers	4,869	5,652	+16%	9,539	9,883	+4%
Heifers	3,303	4,022	+22%	6,201	7,006	+13%
Young Bulls	1,357	1,341	-1%	2,406	2,144	-11%
Total Prime Beef	9,529	11,014	+16%	18,146	19,033	+5%
Calves	133	78	-41%	263	154	-41%
Cows	2,169	2,519	+16%	4,233	4,253	+0%
Mature Bulls	200	152	-24%	323	268	-17%
Total Beef	12,031	13,763	+14%	22,965	9,946	-57%
SHEEPMEAT						
Lambs & Hoggets	619	642	+4%	985	1,117	+13%
Ewes & Rams	50	70	+40%	87	115	+31%
Total Sheepmeat	669	712	+6%	1,073	1,232	+15%

The above figures are provisional; any amendments will be incorporated in the cumulative data (source DAERA).

Market Information May 2017
Page 9

Total Carcase Weight Produced for the Food Chain
Year-to-Date (tonnes – t.)

Month	Prime Cattle		Cows & Bulls		Lambs/Hoggets		Ewes & Rams	
	2016	2017	2016	2017	2016	2017	2016	2017
January	8,471	9,001	2,489	2,527	599	675	98	82
February	8,906	8,854	2,334	2,581	422	666	61	50
March	10,704	10,578	2,466	2,695	551	582	47	49
April	8,617	8,019	2,188	1,850	367	475	37	45
May	9,529	11,014	2,369	2,670	619	642	50	70
June								
July								
August								
September								
October								
November								
December								
Total	46,227	47,467	11,845	12,324	2,557	3,041	293	295
Change (t.)	1,240		479		484		3	
% Change	2.68%		4.04%		18.94%		0.86%	

**excludes calves*

Change in Throughput / Production

Last 4 weeks 2016/2017

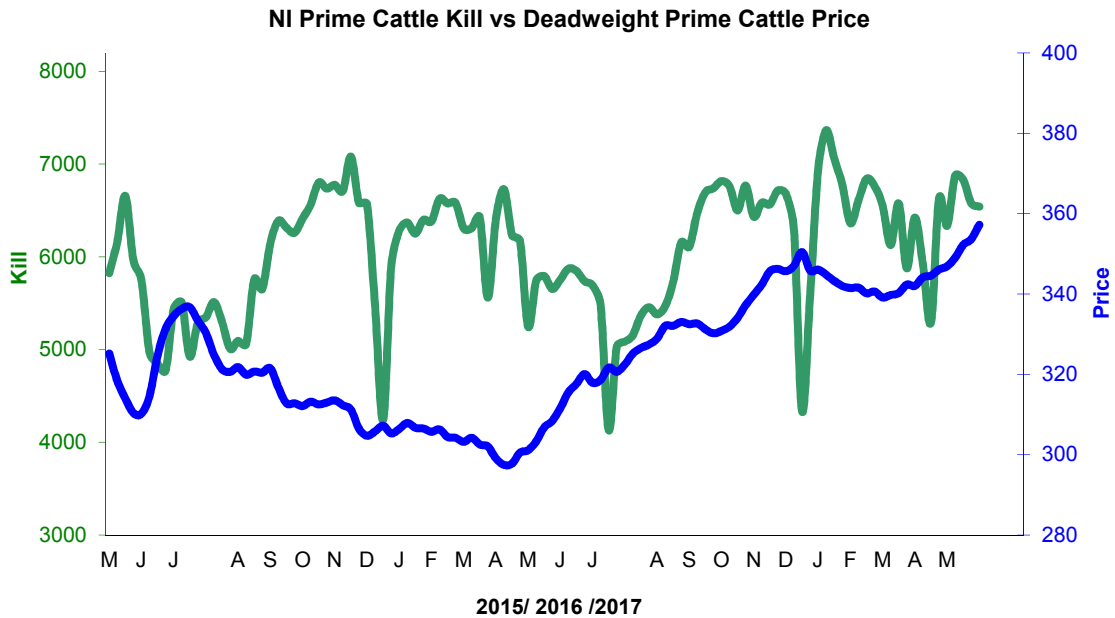
Change in Throughput / Production 2016/2017

May

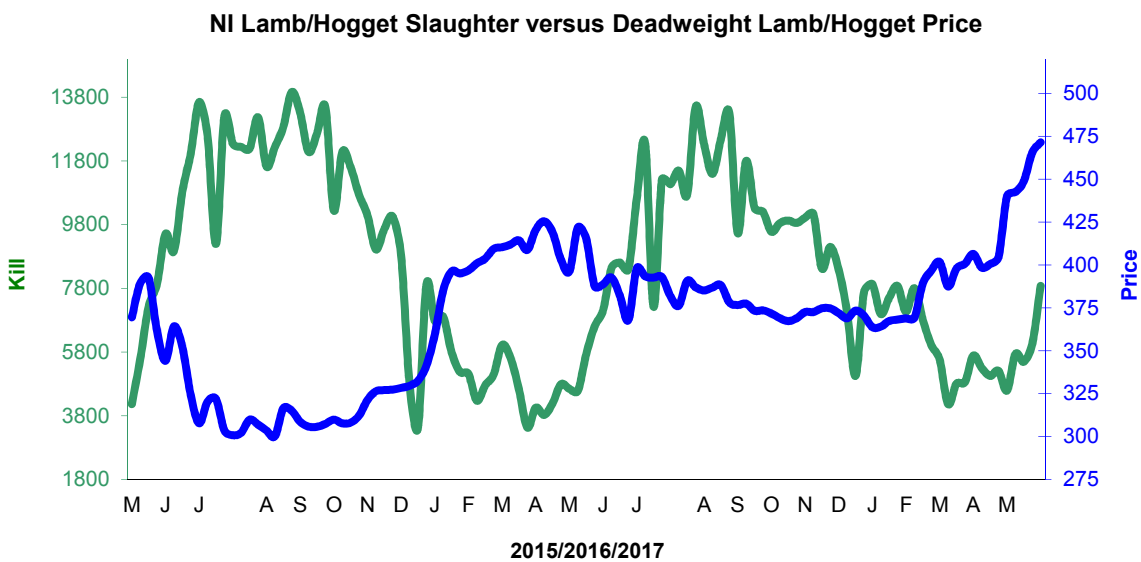
2016/2017	Number	Tonnage	ACW Kg
Prime	17.6%	15.6%	-6.15
Cows	17.1%	16.1%	-2.54
Total	16.1%	14.4%	-5.10
Lamb	3.7%	3.8%	0.04
Ewes and Rams	41.6%	39.7%	-0.39
Total Sheep	5.8%	6.5%	0.16

Supply and Price

NI Clean Cattle Kill vs. Average Clean Cattle Price



NI Lamb/Hogget Kill vs. Average Lamb / Hogget Price

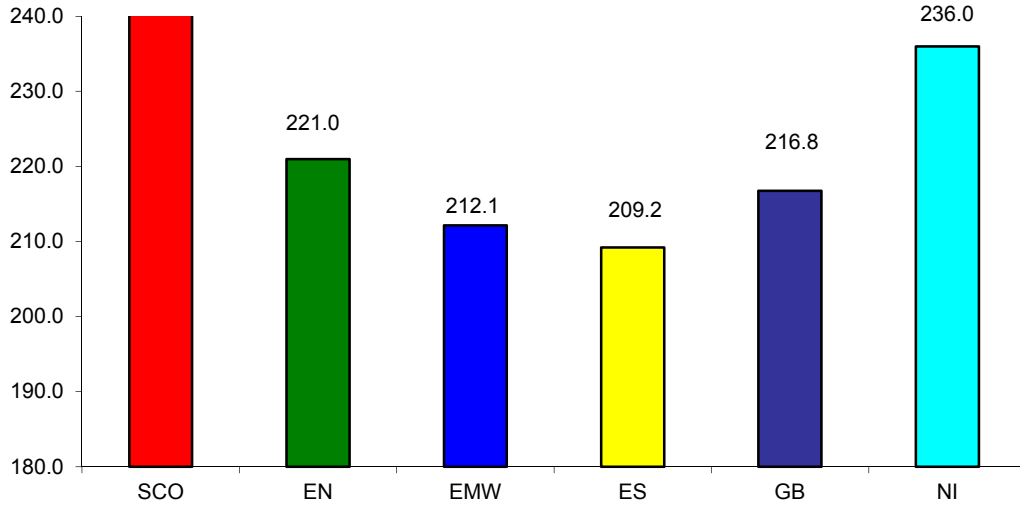


Green	Supply (Kill)
Blue	Price

BRITISH ISLES COMPARISONS

UK Average Cow Prices

52 Weeks to 03 June 2017

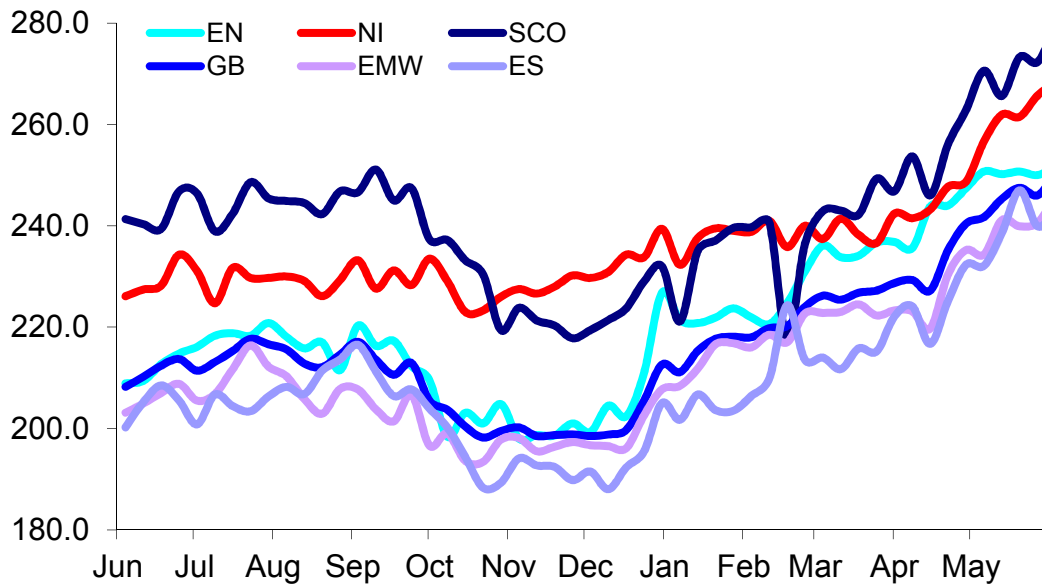


SCO	Scotland
EN	England North
EMW	England Midlands and Wales
ES	England South
NI	Northern Ireland
GB	Great Britain

Prices relate to UK Dressing Specification

Weekly UK Cow Prices

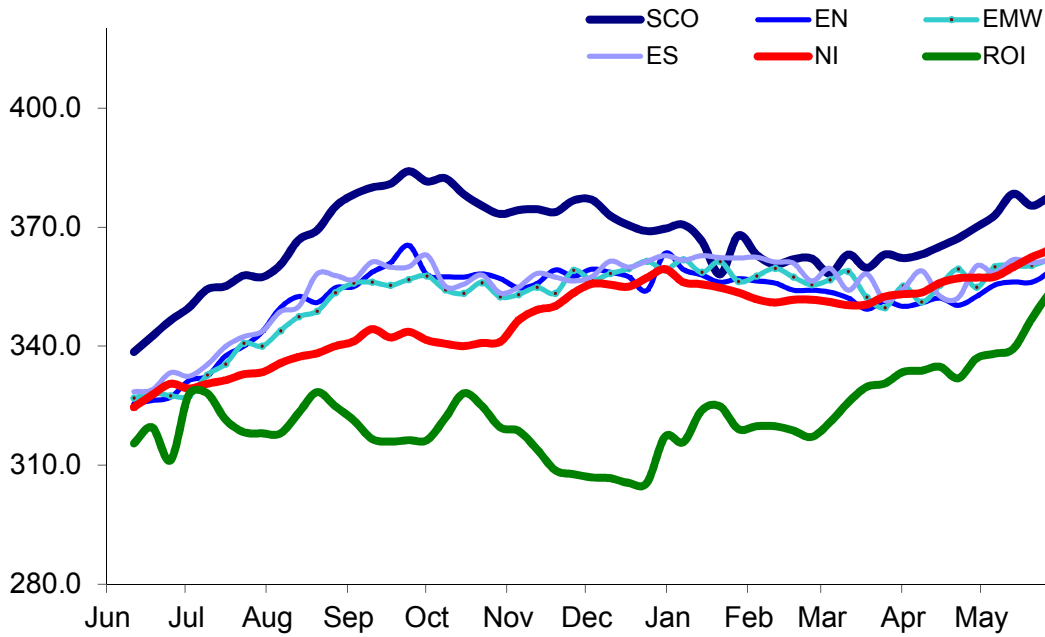
52 Weeks to 03 June 2017



Prices relate to UK Dressing Specification

British Isles R3 Steer Price

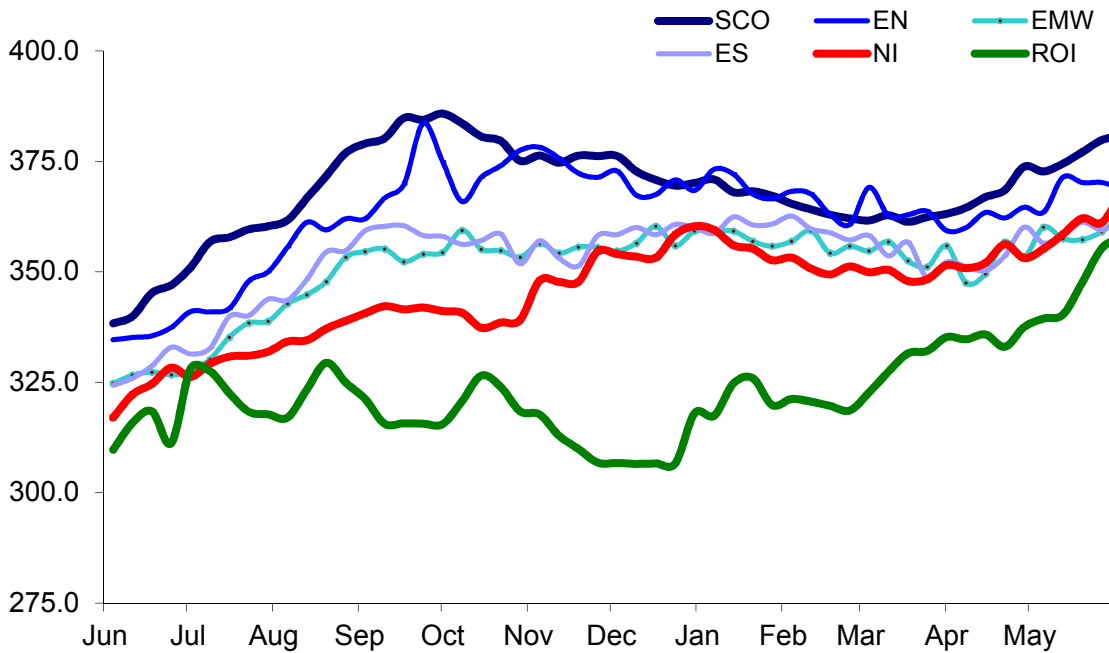
52 Weeks to 03 June 2017



Prices relate to UK Dressing Specification

British Isles R4 Steer Price

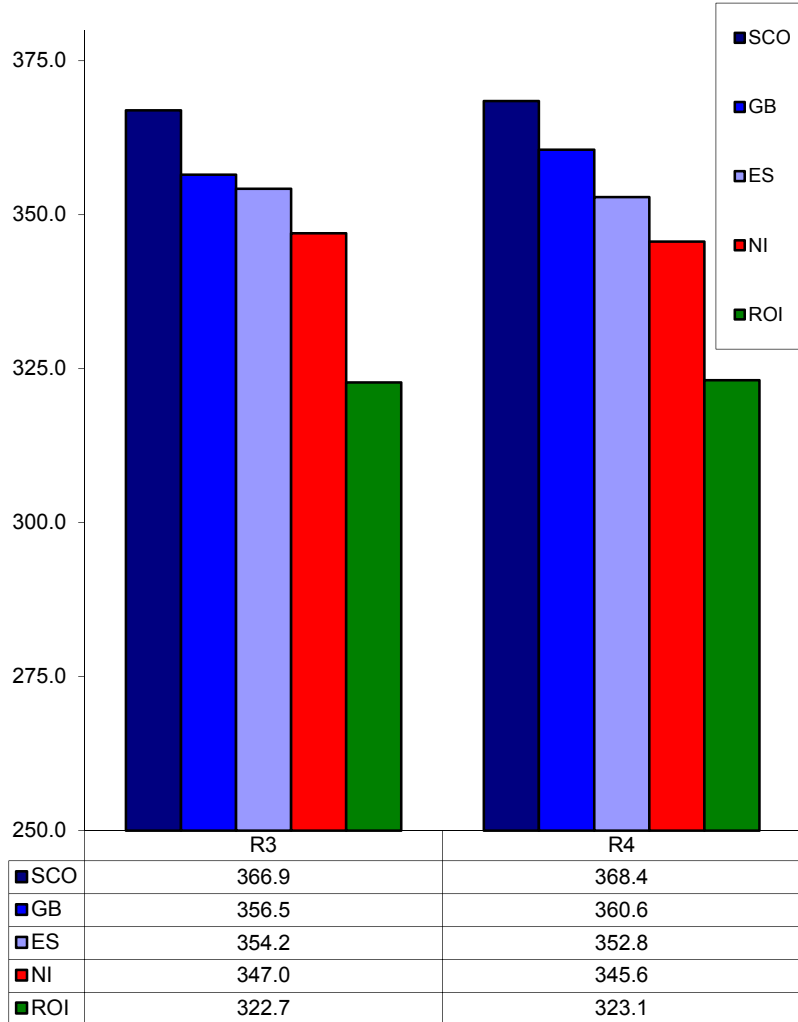
52 Weeks to 03 June 2017



Prices relate to UK Dressing Specification

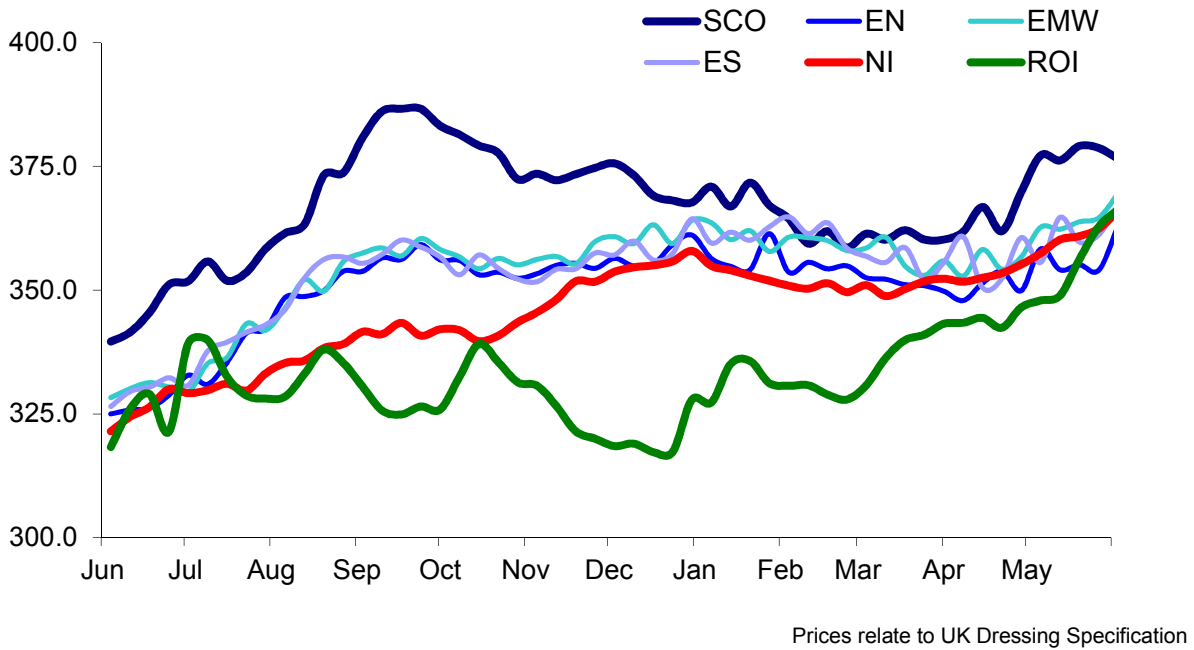
British Isles Average R3 and R4 Steer price

52 Weeks to 03 June 2017

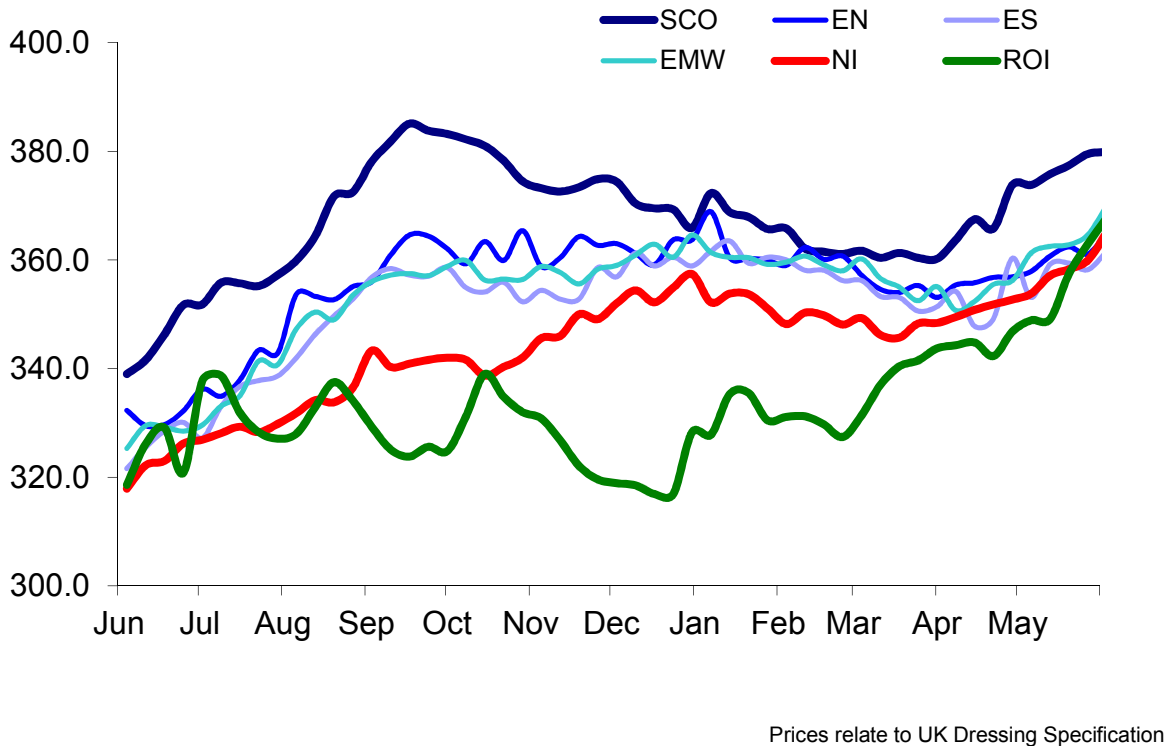


Prices relate to UK Dressing Specification

British Isles R3 Heifer Price
52 Weeks to 03 June 2017

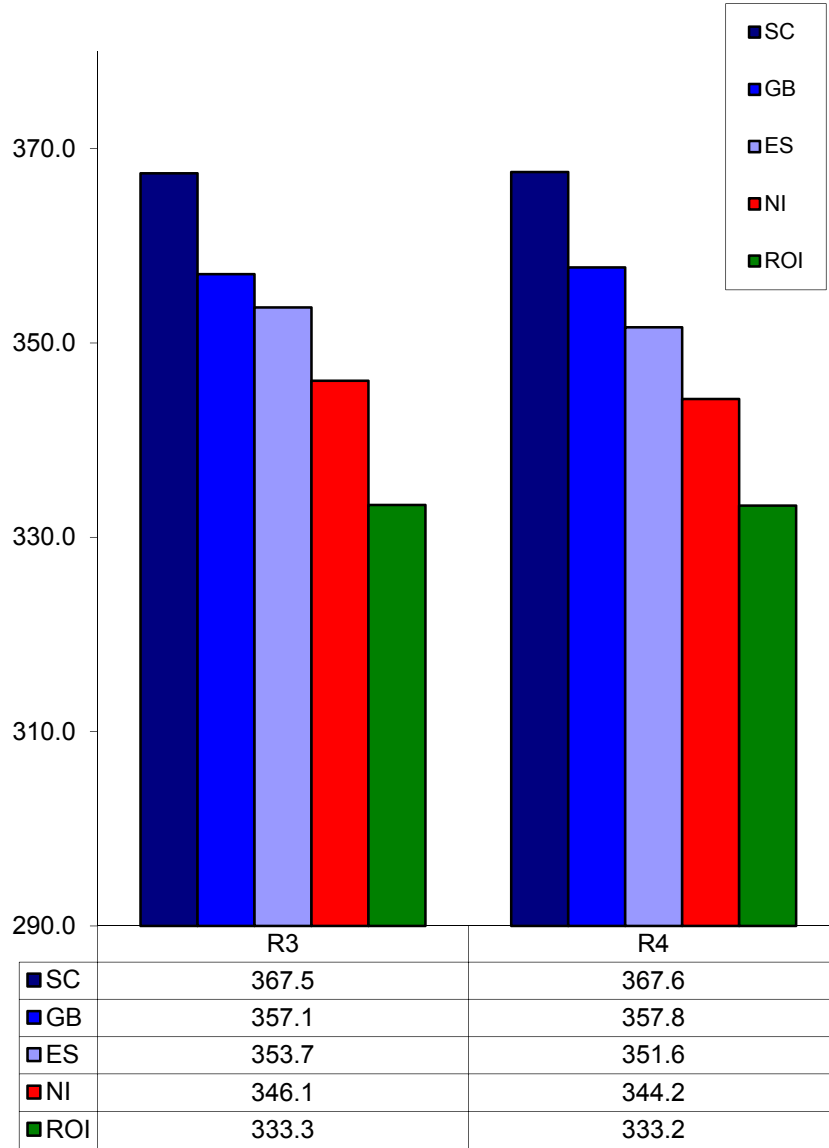


British Isles R4 Heifer Price
52 Weeks to 03 June 2017



British Isles Average R3 and R4 Heifer price

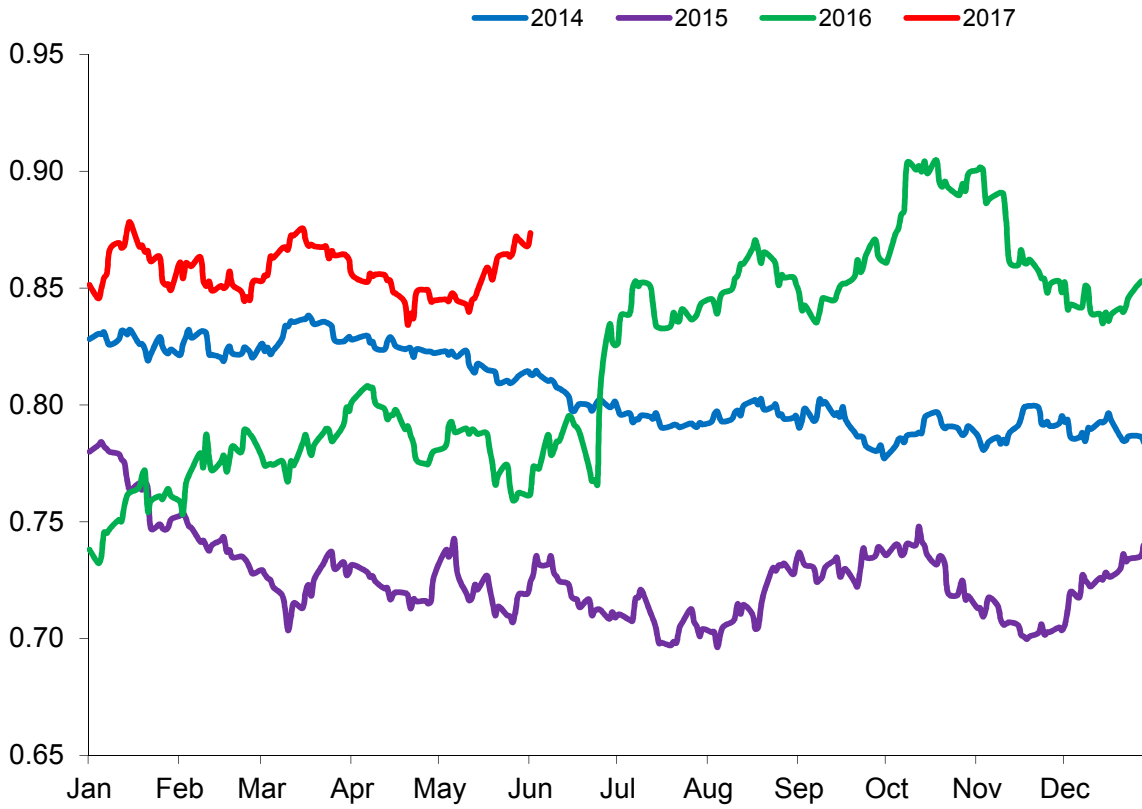
52 Weeks to 03 June 2017



Prices relate to UK Dressing Specification

Exchange Rate £ / Euro

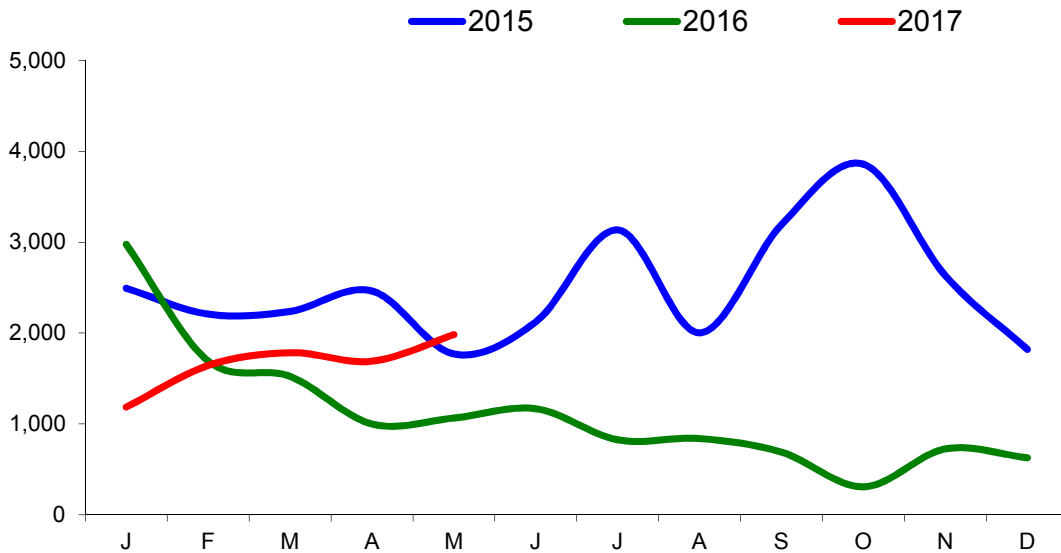
01 January 2014 –31 May 2017



Imports

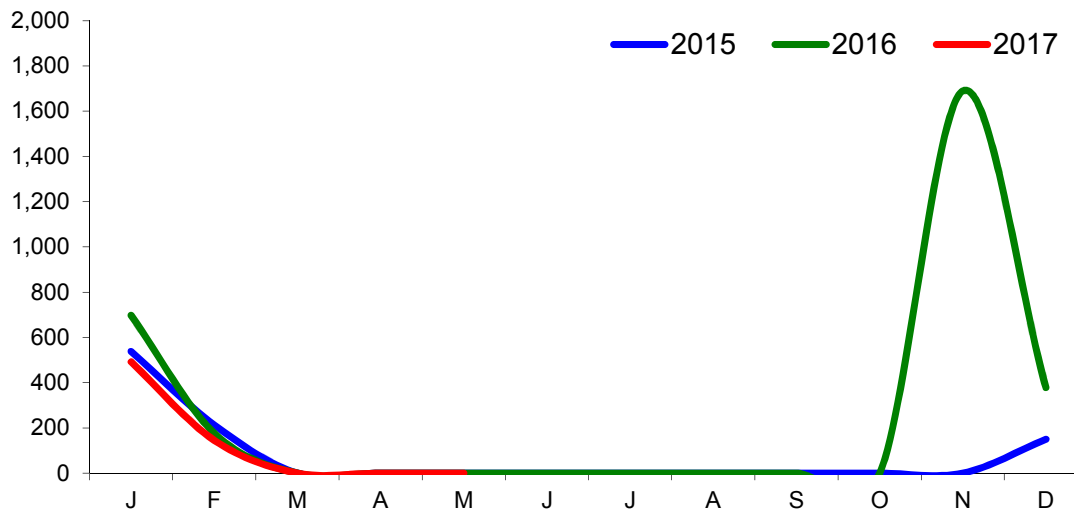
Monthly Live Imports of Cattle into NI for Direct Slaughter

From ROI and GB Combined



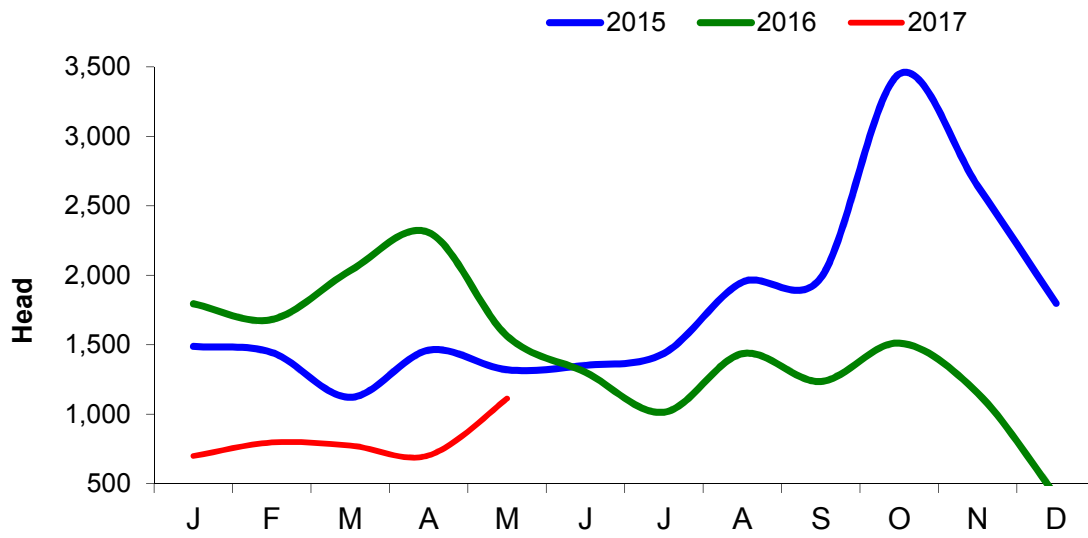
Monthly Live Imports of Sheep into NI for Direct Slaughter

From ROI and GB Combined



Exports

Monthly Live Exports of Cattle from NI into ROI and GB



Monthly Live Exports of Sheep from NI into ROI and GB

