



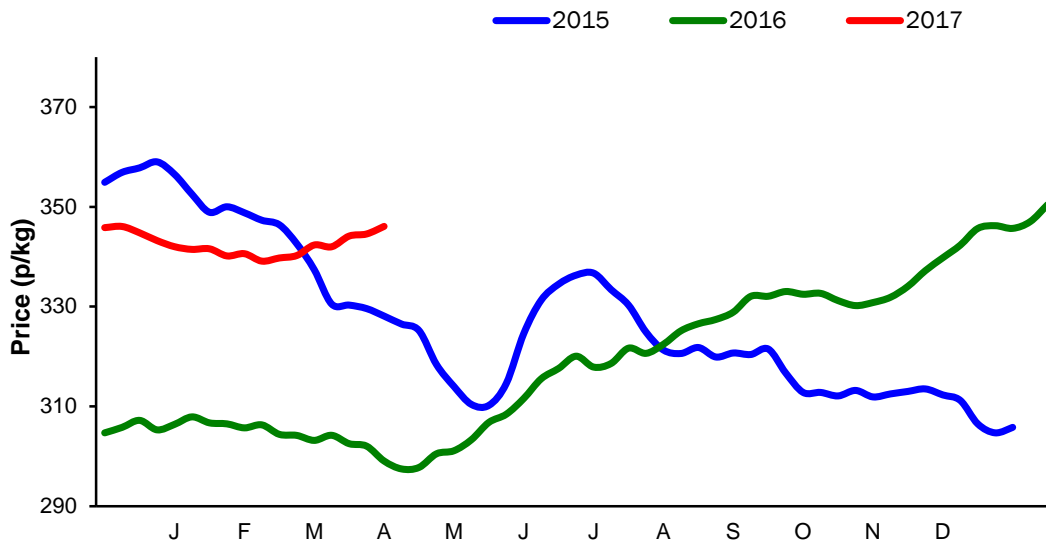
Monthly Economic Review
April 2017

Contents

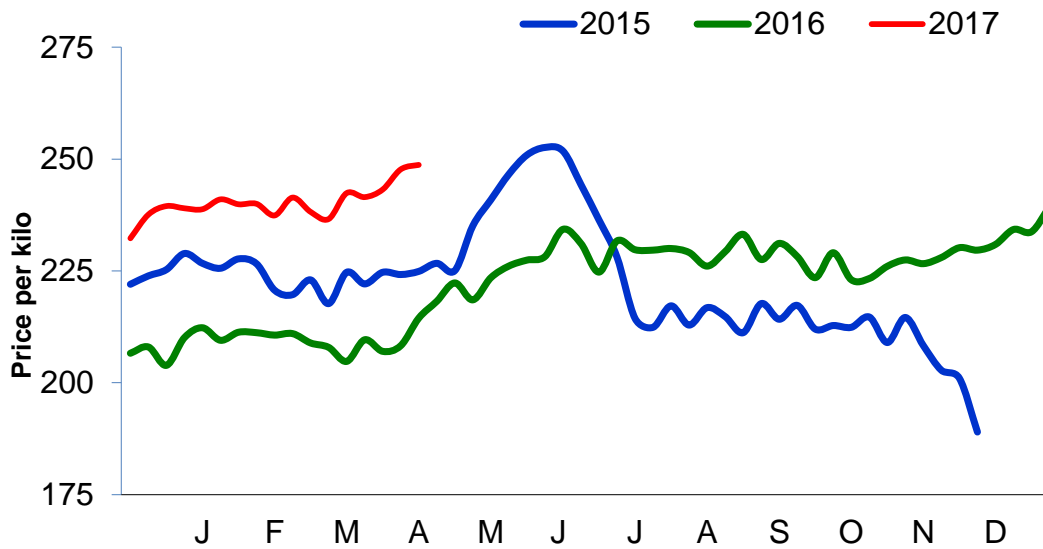
Contents.....	2
Cattle Prices	4
Average NI Clean Cattle Price	4
Average NI Cow Price.....	4
Cattle Slaughtering.....	5
NI Clean Cattle Slaughtering – Cumulative	5
NI Weekly Clean Cattle Slaughtering.....	5
NI Weekly Cow Slaughtering	5
Sheep Prices.....	6
Average NI Lamb / Hogget Price	6
Sheep Slaughtering.....	7
Cumulative Lamb & Hogget Slaughtering	7
Total Weekly Lamb & Hogget Slaughtering	7
Total Weekly Ewe and Ram Slaughtering.....	7
Total Carcase Weight Produced for the Food Chain.....	8
Change in Throughput / Production	9
Supply and Price.....	10
NI Lamb/Hogget Kill vs. Average Lamb / Hogget Price	10
NI Clean Cattle Kill vs. Average Clean Cattle Price.....	10
British Isles Price Comparisons	11
UK Average Cow Prices	11
Weekly UK Cow Prices	11
British Isles R3 Steer Price	12
British Isles R4 Steer Price	12
British Isles Average R3 and R4 Steer price	13
British Isles R3 Heifer Price	14
British Isles R4 Heifer Price	14
British Isles Average R3 and R4 Heifer price.....	15
Exchange Rate £ / Euro	16
Imports.....	17
Monthly Live Imports of Cattle into NI for Direct Slaughter	17
Monthly Live Imports of Sheep into NI for Direct Slaughter	17
Exports	18
Monthly Live Exports of Cattle from NI into RoI and GB.....	18
Monthly live Exports of Sheep from NI into RoI and GB	18

Cattle Prices

Average NI Clean Cattle Price

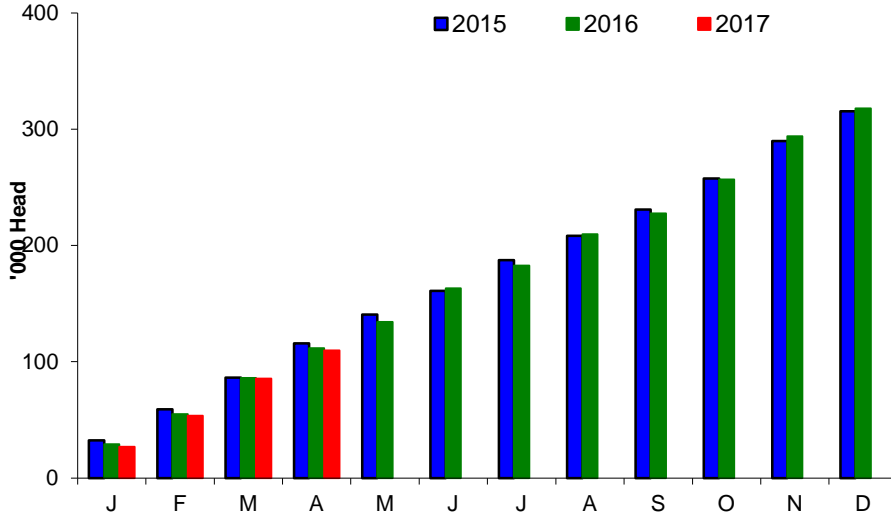


Average NI Cow Price

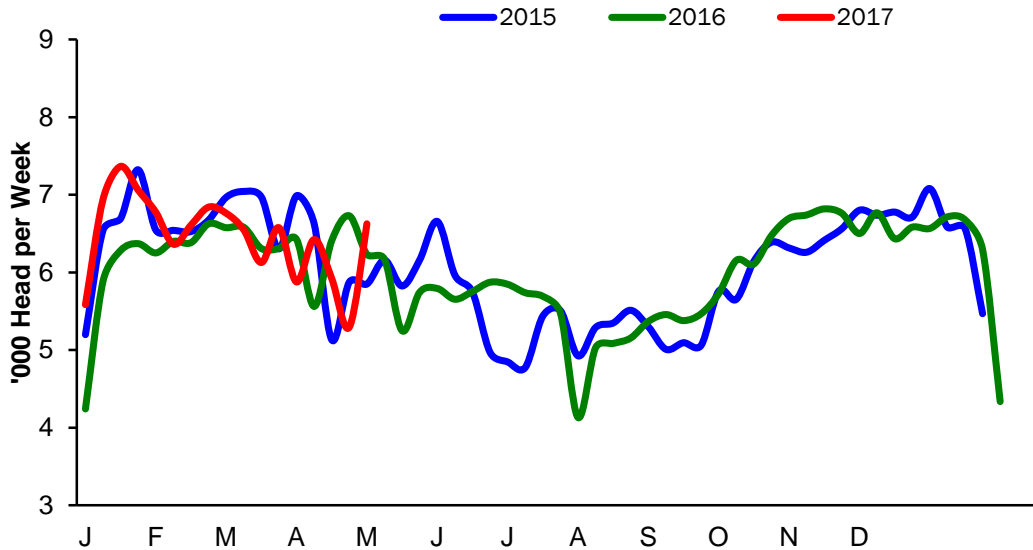


Cattle Slaughtering

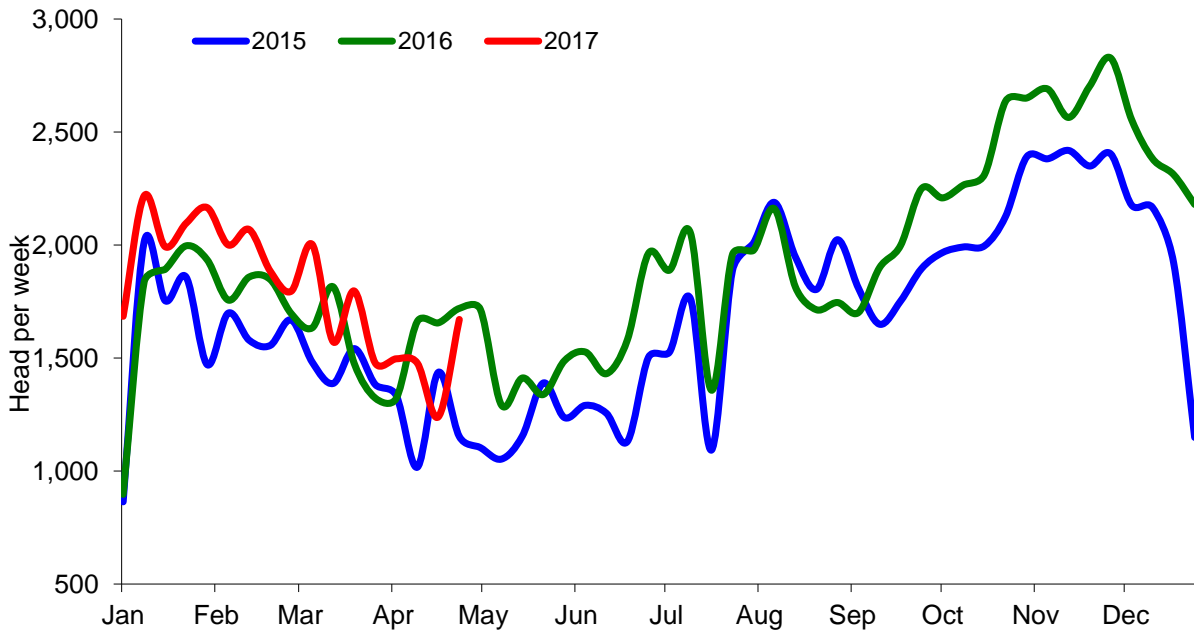
NI Clean Cattle Slaughtering – Cumulative



NI Weekly Clean Cattle Slaughtering

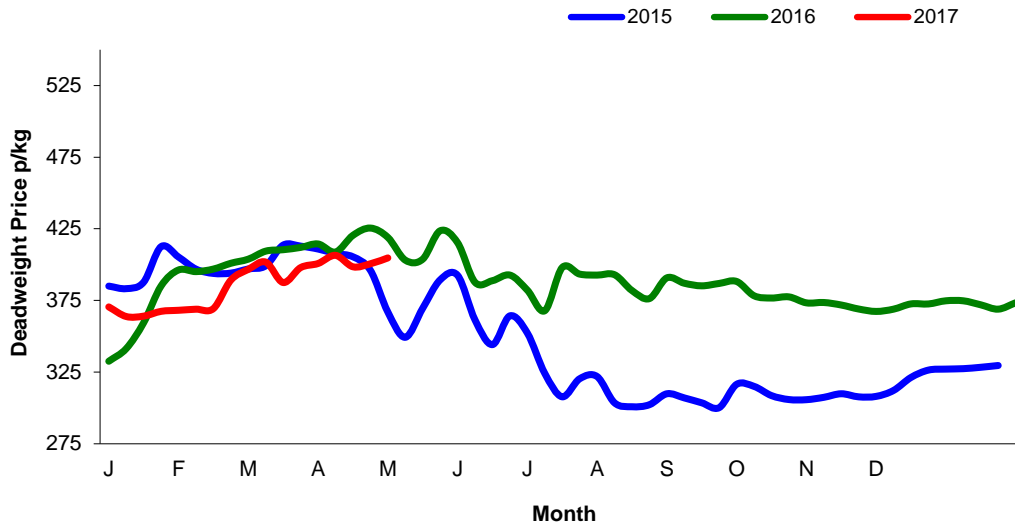


NI Weekly Cow Slaughtering



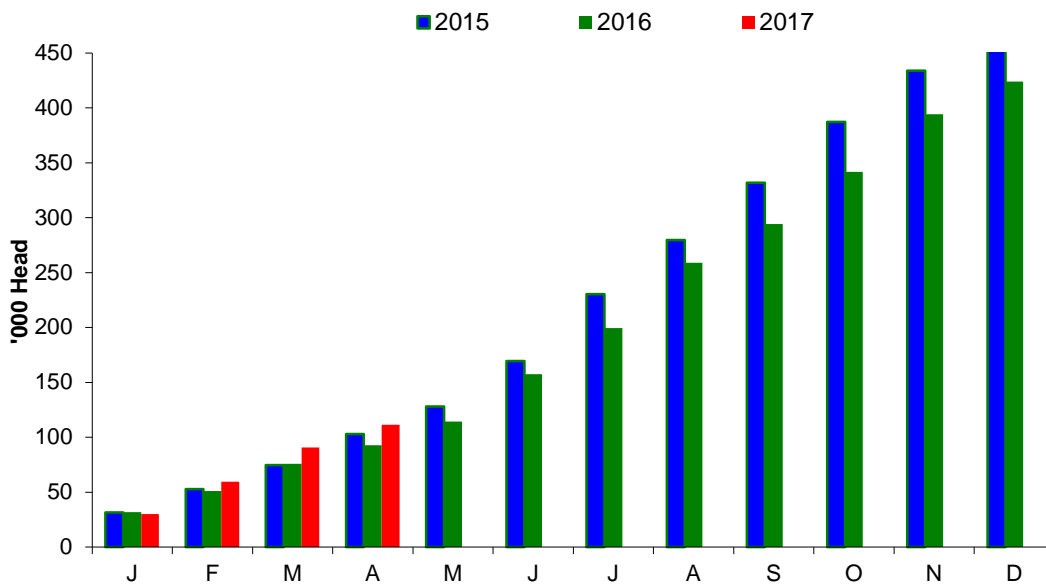
Sheep Prices

Average Deadweight NI Hogget / Lamb Price

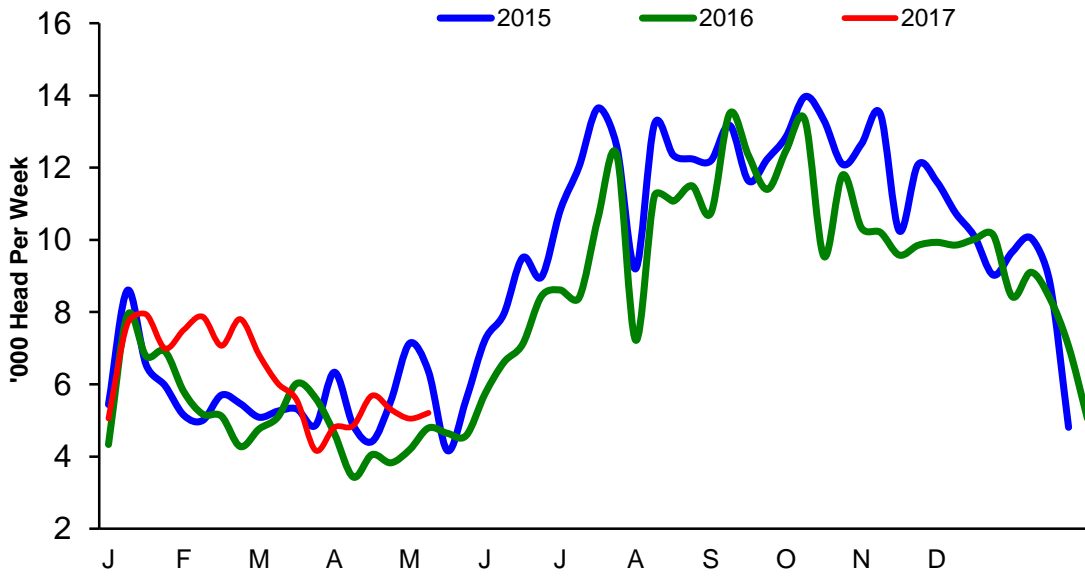


Sheep Slaughterings

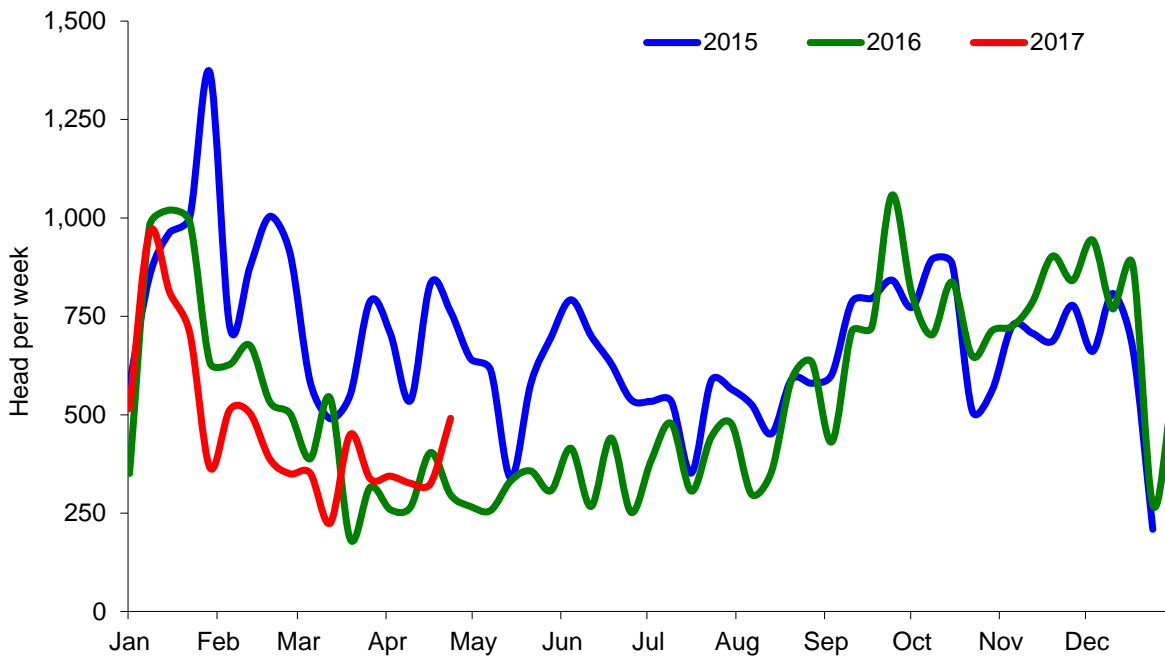
Cumulative Lamb & Hogget Slaughterings



Total Weekly Lamb & Hogget Slaughtering



Total Weekly Ewe and Ram Slaughtering



Market Information April 2017
Page 8

NI CATTLE AND SHEEP SLAUGHTERINGS FOR THE FOODCHAIN						
	April			Year to Date		
	(4 weeks ended 29/04/17)			(4 weeks ended 29/04/17)		
	Apr-16	Apr-17	% Change	2016	2017	Change
CATTLE						
Steers	13,191	12,192	-8%	13,191	12,192	-8%
Heifers	9,097	9,576	+5%	9,097	9,576	+5%
Young Bulls / Calves	3,251	2,496	-23%	3,251	2,496	-23%
Total Prime Cattle	25,539	24,264	-5%	25,539	24,264	-5%
Calves	625	441	-29%	625	441	-29%
Cows	6,754	5,886	-13%	6,754	5,886	-13%
Mature Bulls	288	254	-12%	288	254	-12%
Total Cattle	33,206	30,845	-7%	33,206	30,845	-7%
SHEEP						
Lambs & Hoggets	16,862	21,251	+26%	16,862	21,251	+26%
Ewes & Rams	1,233	1,486	+21%	1,233	1,486	+21%
Total Sheep	18,095	22,737	+26%	18,095	22,737	+26%
The above figures are provisional; any amendments will be incorporated in the cumulative data (source DAERA).						

NI BEEF AND SHEEPMET PRODUCTION - FOODCHAIN						
	April			Year to Date		
	(4 weeks ended 29/04/17)			(4 weeks ended 29/04/17)		
	Apr-16	Apr-17	% Change	2016	2017	Change
BEEF						
Steers	4,670	4,232	-9%	4,670	4,232	-9%
Heifers	2,898	2,984	+3%	2,898	2,984	+3%
Young Bulls	1,049	803	-23%	1,049	803	-23%
Total Prime Beef	8,617	8,019	-7%	8,617	8,019	-7%
Calves	129	76	-41%	129	76	-41%
Cows	2,064	1,734	-16%	2,064	1,734	-16%
Mature Bulls	124	116	-6%	124	116	-6%
Total Beef	10,934	9,946	-9%	10,934	9,946	-9%
SHEEPMET						
Lambs & Hoggets	367	475	+30%	367	475	+30%
Ewes & Rams	37	45	+20%	37	45	+20%
Total Sheepmeat	404	520	+29%	404	520	+29%
The above figures are provisional; any amendments will be incorporated in the cumulative data (source DAERA).						

Market Information April 2017
Page 9

Total Carcase Weight Produced for the Food Chain
Year-to-Date (tonnes – t.)

Month	Prime Cattle		Cows & Bulls		Lambs/Hoggets		Ewes & Rams	
	2016	2017	2016	2017	2016	2017	2016	2017
January	8,471	9,001	2,489	2,527	599	675	98	82
February	8,906	8,854	2,334	2,581	422	666	61	50
March	10,704	10,578	2,466	2,695	551	582	47	49
April	8,617	8,019	2,188	1,850	367	475	37	45
May								
June								
July								
August								
September								
October								
November								
December								
Total	36,698	36,453	9,477	9,653	1,938	2,399	243	225
Change (t.)	-245		177		461		-17	
% Change	-0.67%		1.86%		23.78%		-7.20%	

**excludes calves*

Change in Throughput / Production

Last 4 weeks 2016/2017

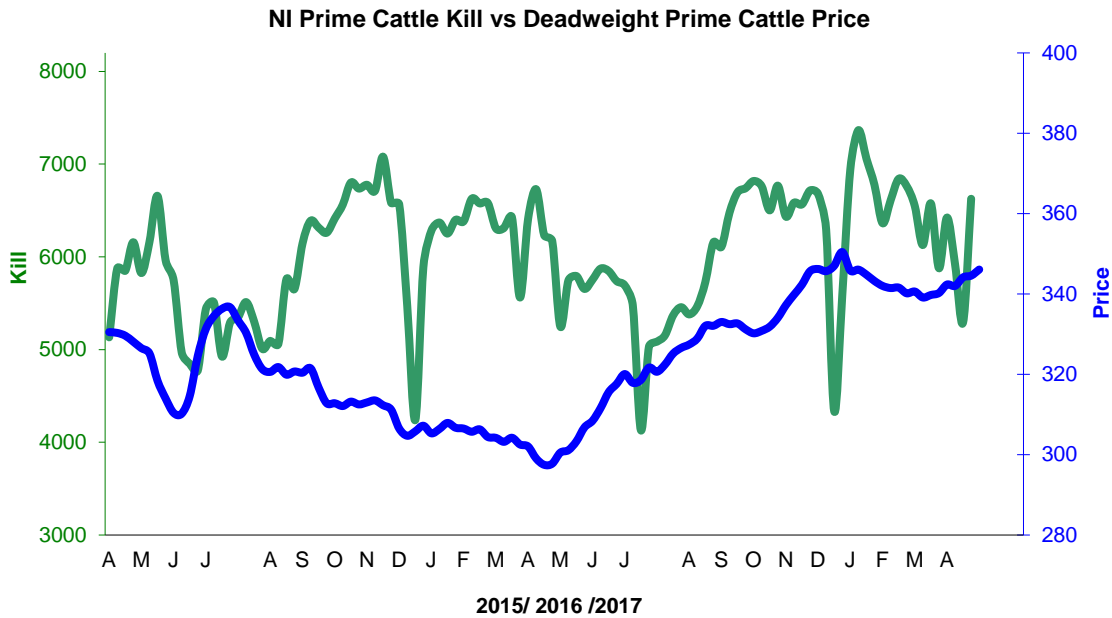
Change in Throughput / Production 2016/2017

April

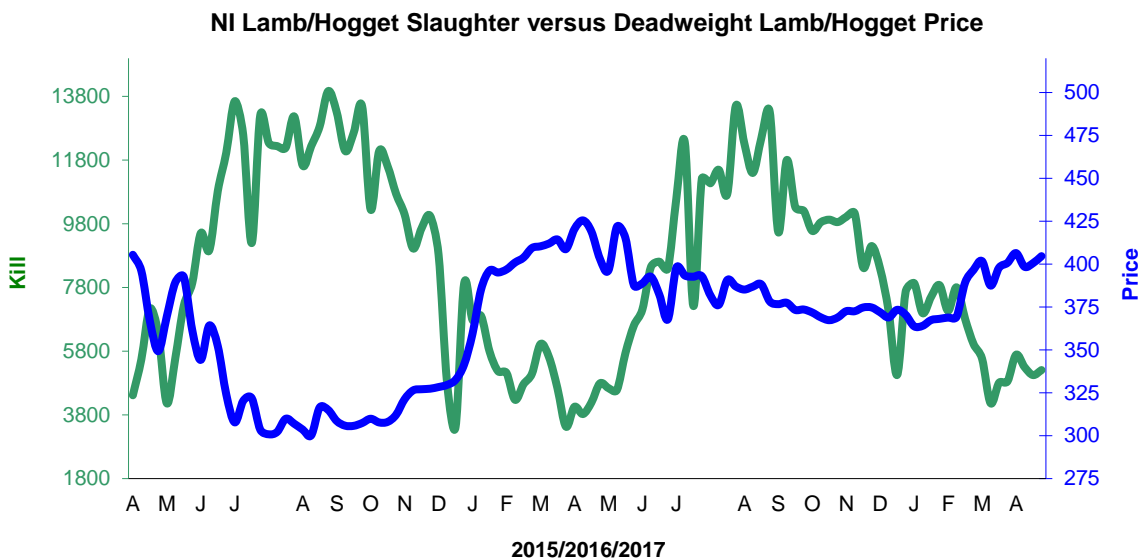
2016/2017	Number	Tonnage	ACW Kg
Prime	-5.0%	-6.9%	-7.10
Cows	-12.9%	-16.0%	-10.72
Total	-7.1%	-9.0%	-7.05
Lamb	26.0%	29.7%	0.63
Ewes and Rams	20.5%	20.0%	-0.11
Total Sheep	25.7%	28.8%	0.54

Supply and Price

NI Clean Cattle Kill vs. Average Clean Cattle Price



NI Lamb/Hogget Kill vs. Average Lamb / Hogget Price

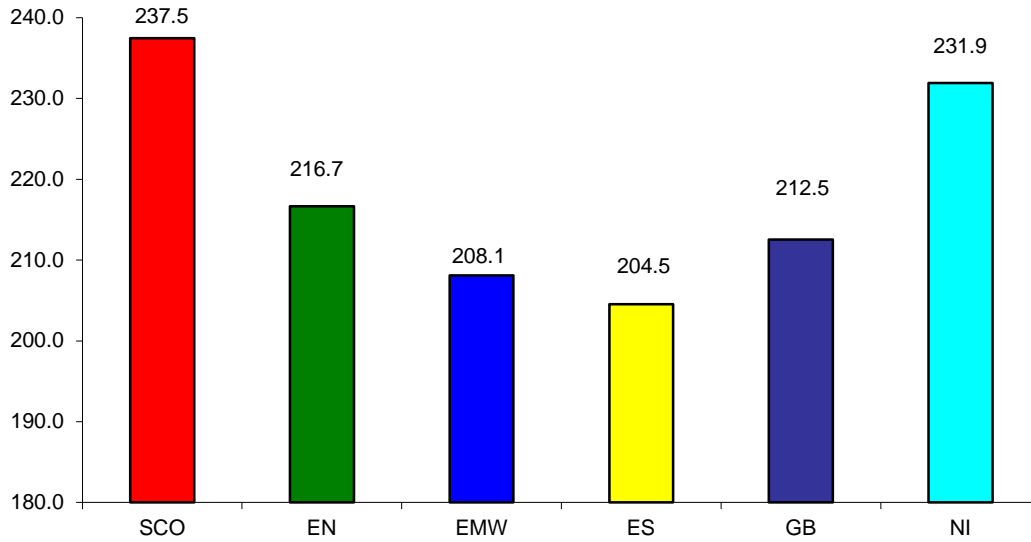


Green	Supply (Kill)
Blue	Price

BRITISH ISLES COMPARISONS

UK Average Cow Prices

52 Weeks to 30 April 2017

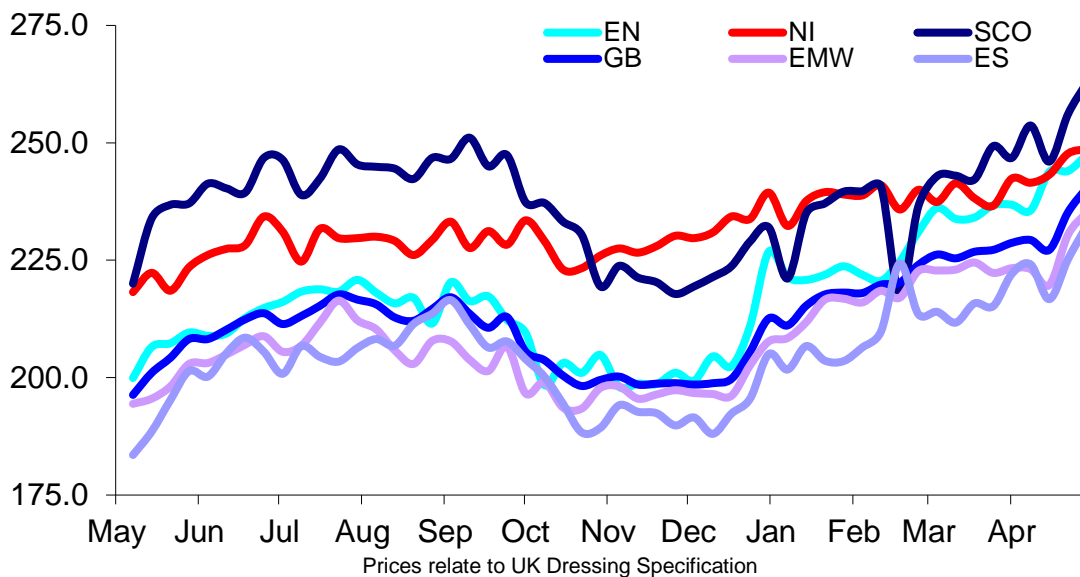


SCO	Scotland
EN	England North
EMW	England Midlands and Wales
ES	England South
NI	Northern Ireland
GB	Great Britain

Prices relate to UK Dressing Specification

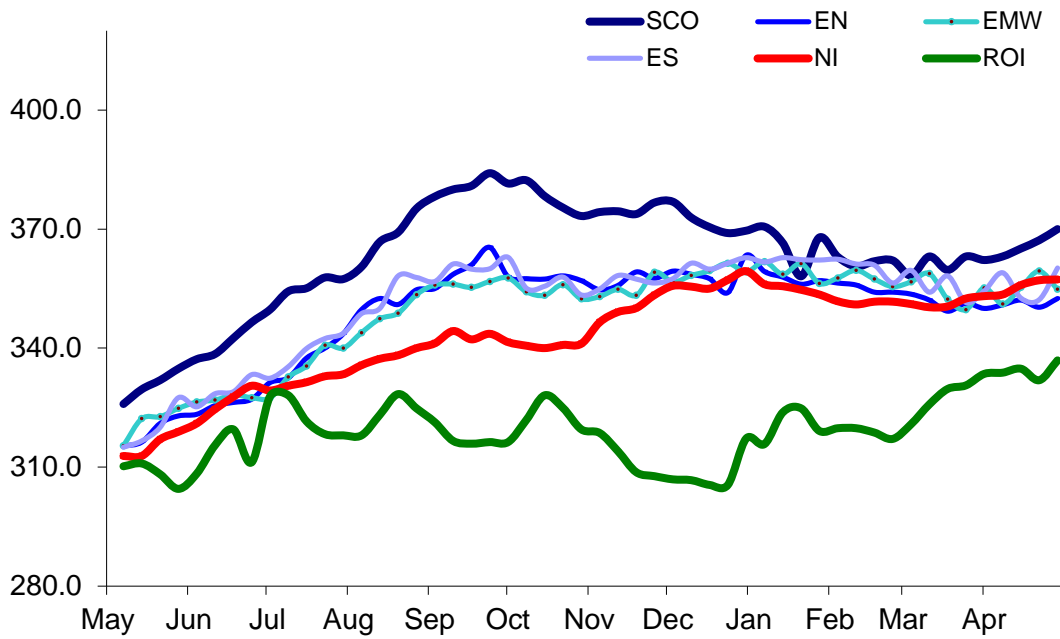
Weekly UK Cow Prices

52 Weeks to 30 April 2017



British Isles R3 Steer Price

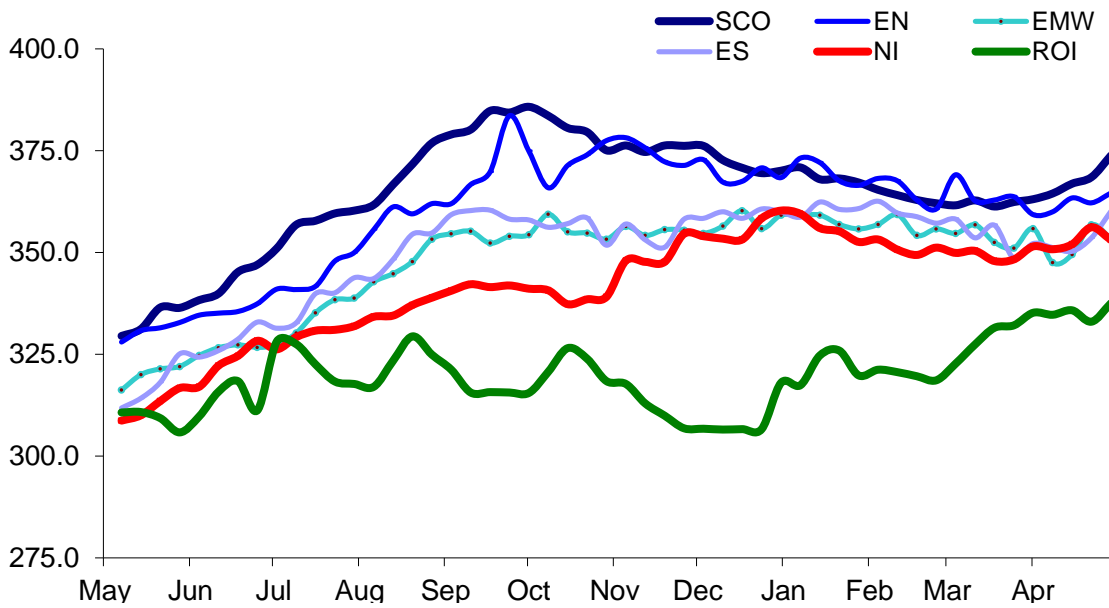
52 Weeks to 30 April 2017



Prices relate to UK Dressing Specification

British Isles R4 Steer Price

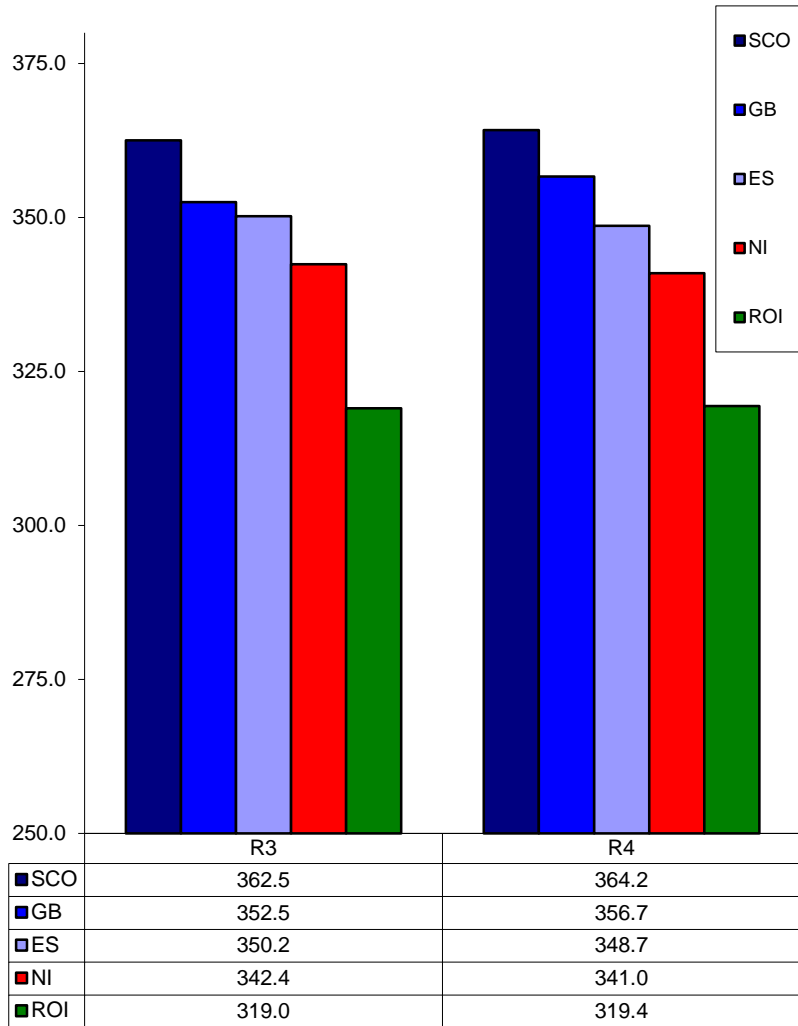
52 Weeks to 30 April 2017



Prices relate to UK Dressing Specification

British Isles Average R3 and R4 Steer price

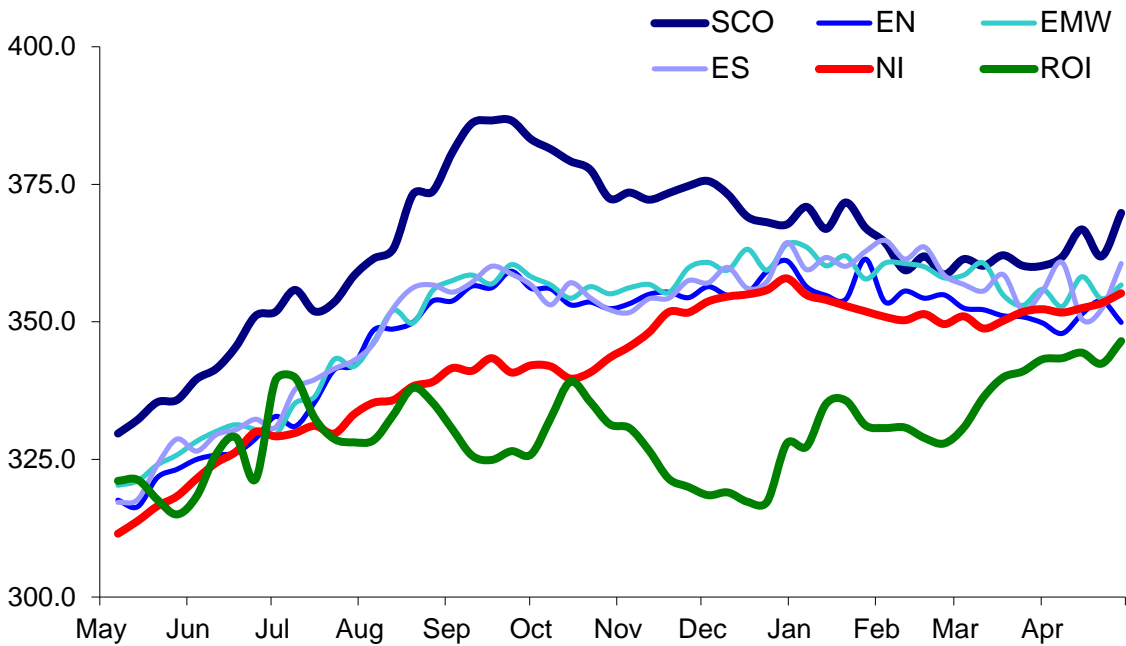
52 Weeks to 30 April 2017



Prices relate to UK Dressing Specification

British Isles R3 Heifer Price

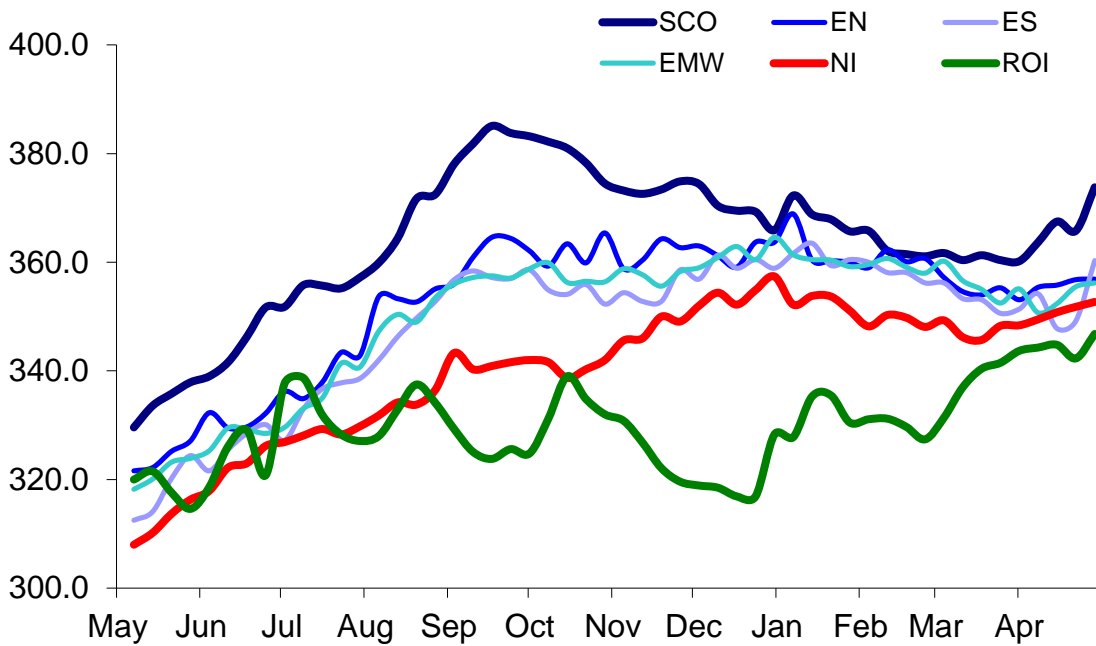
52 Weeks to 30 April 2017



Prices relate to UK Dressing Specification

British Isles R4 Heifer Price

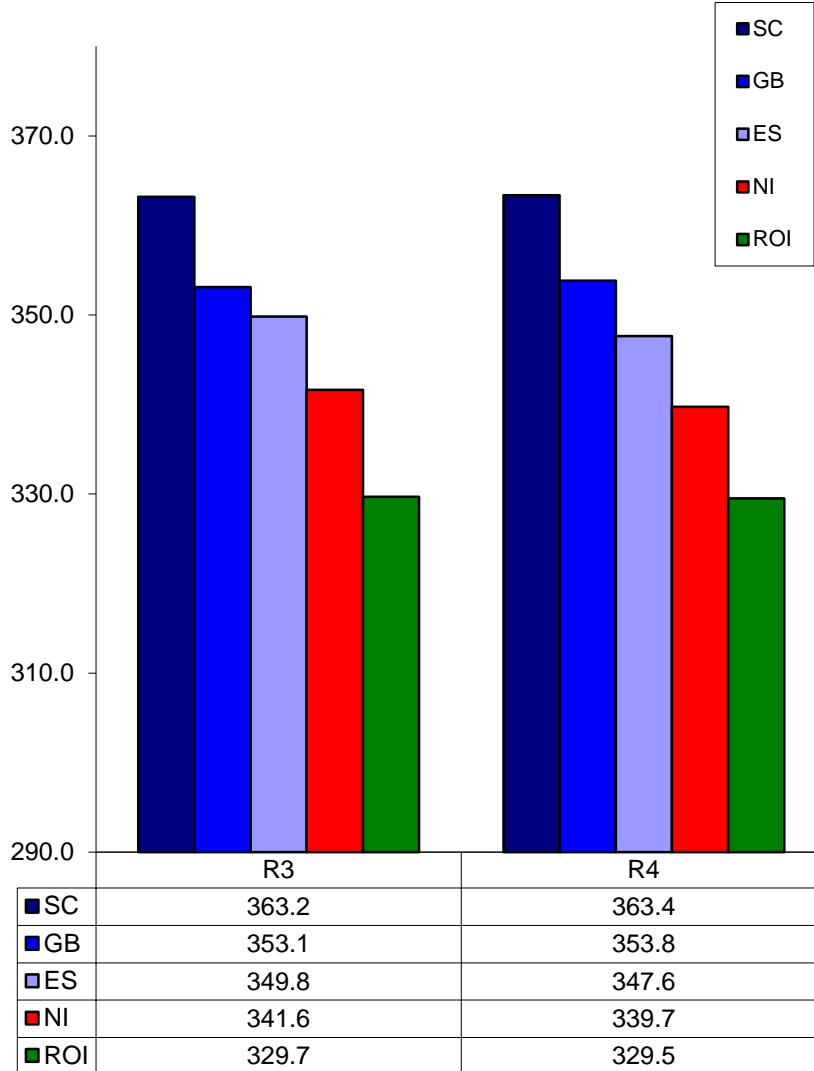
52 Weeks to 30 April 2017



Prices relate to UK Dressing Specification

British Isles Average R3 and R4 Heifer price

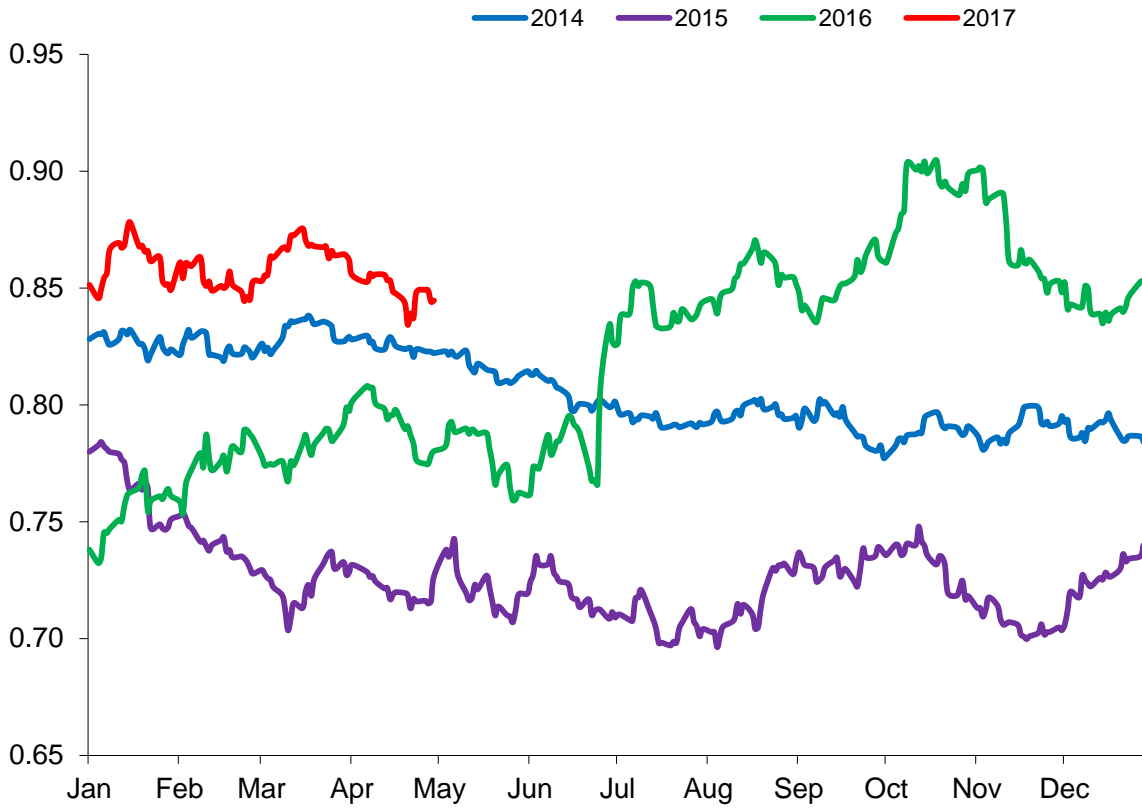
52 Weeks to 30 April 2017



Prices relate to UK Dressing Specification

Exchange Rate £ / Euro

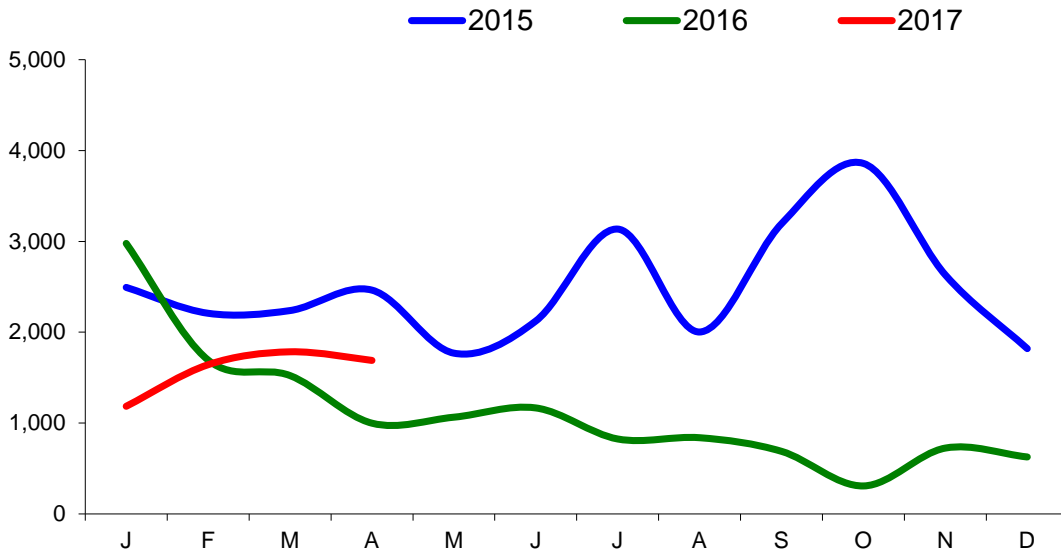
01 January 2014 –30 April 2017



Imports

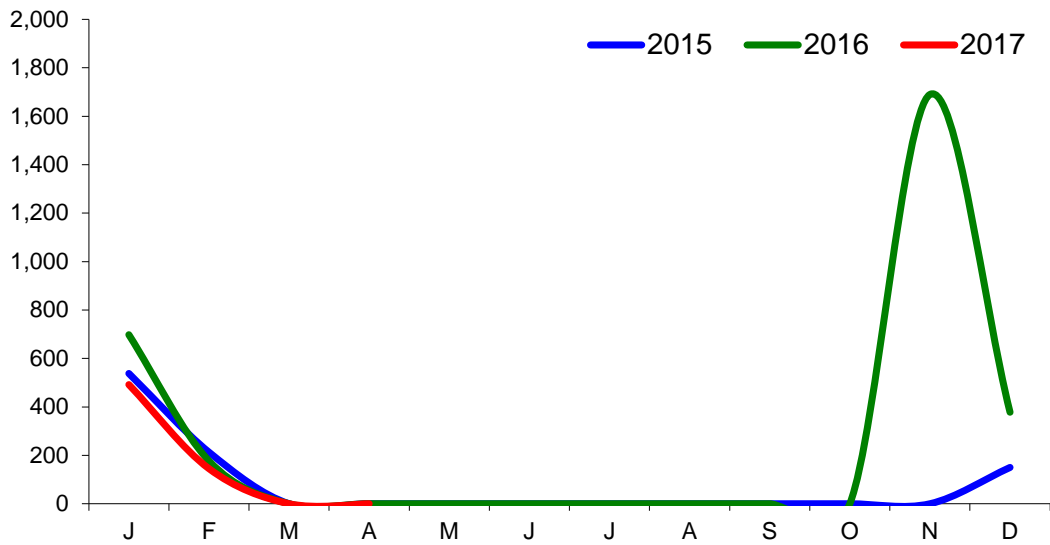
Monthly Live Imports of Cattle into NI for Direct Slaughter

From ROI and GB Combined



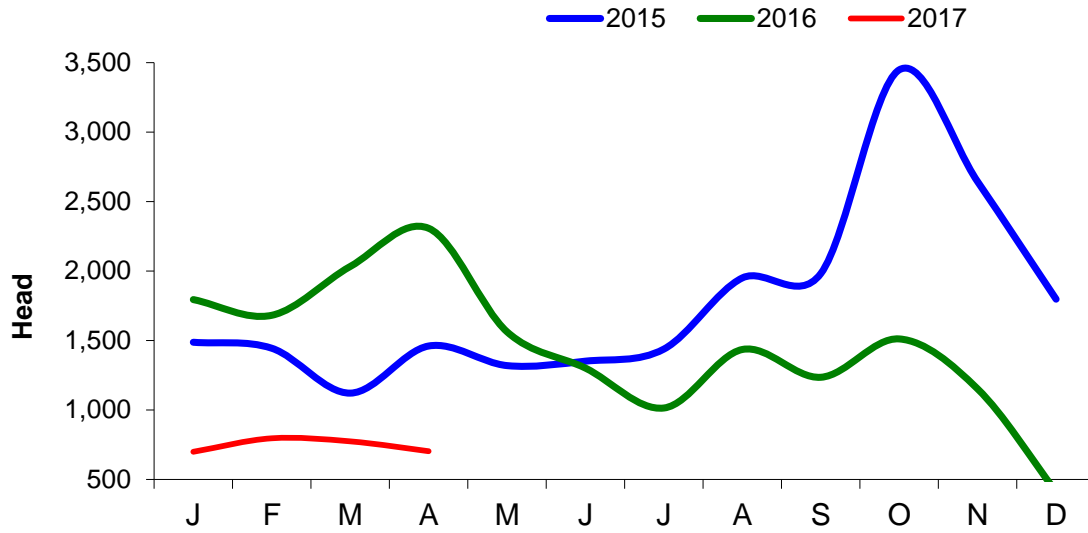
Monthly Live Imports of Sheep into NI for Direct Slaughter

From ROI and GB Combined



Exports

Monthly Live Exports of Cattle from NI into ROI and GB



Monthly Live Exports of Sheep from NI into ROI and GB

