



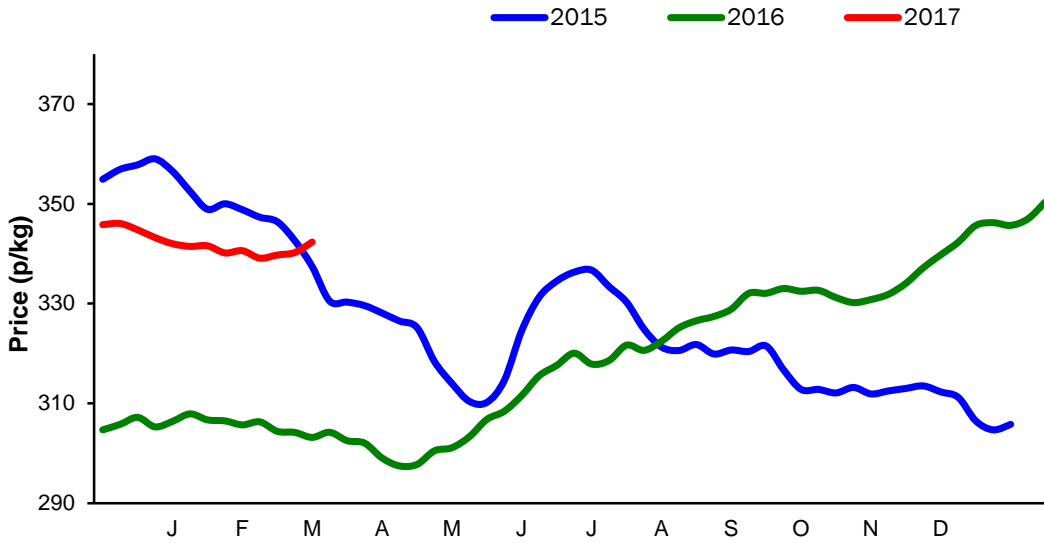
Monthly Economic Review
March 2017

Contents

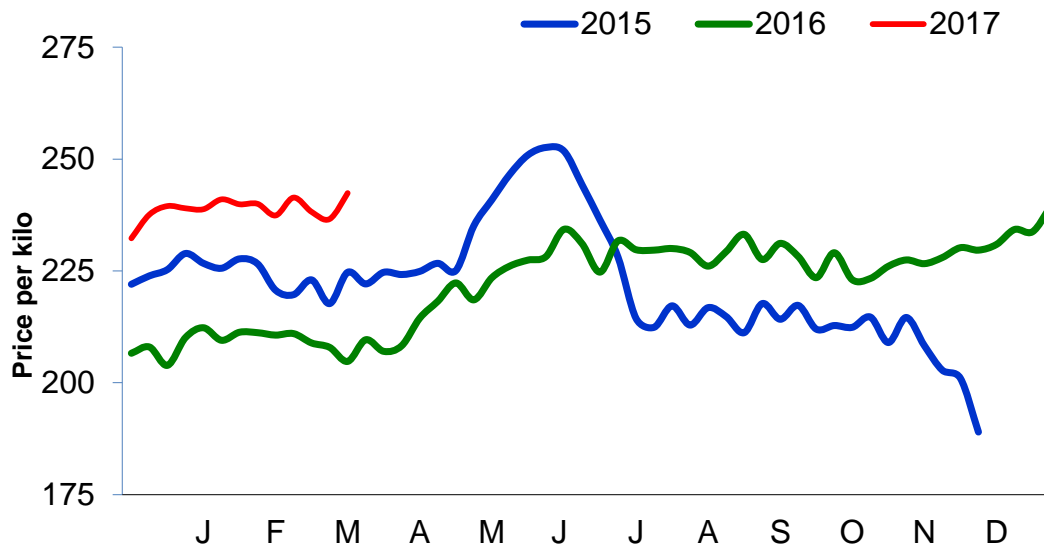
Contents.....	2
Cattle Prices	4
Average NI Clean Cattle Price	4
Average NI Cow Price.....	4
Cattle Slaughtering.....	5
NI Clean Cattle Slaughtering – Cumulative	5
NI Weekly Clean Cattle Slaughtering.....	5
NI Weekly Cow Slaughtering	5
Sheep Prices.....	6
Average NI Lamb / Hogget Price	6
Sheep Slaughtering.....	7
Cumulative Lamb & Hogget Slaughtering	7
Total Weekly Lamb & Hogget Slaughtering	7
Total Weekly Ewe and Ram Slaughtering.....	7
Total Carcase Weight Produced for the Food Chain.....	8
Change in Throughput / Production	9
Supply and Price.....	10
NI Lamb/Hogget Kill vs. Average Lamb / Hogget Price	10
NI Clean Cattle Kill vs. Average Clean Cattle Price.....	10
British Isles Price Comparisons	11
UK Average Cow Prices	11
Weekly UK Cow Prices	11
British Isles R3 Steer Price	12
British Isles R4 Steer Price	12
British Isles Average R3 and R4 Steer price	13
British Isles R3 Heifer Price	14
British Isles R4 Heifer Price	14
British Isles Average R3 and R4 Heifer price.....	15
Exchange Rate £ / Euro	16
Imports.....	17
Monthly Live Imports of Cattle into NI for Direct Slaughter	17
Monthly Live Imports of Sheep into NI for Direct Slaughter	17
Exports	18
Monthly Live Exports of Cattle from NI into RoI and GB.....	18
Monthly live Exports of Sheep from NI into RoI and GB	18

Cattle Prices

Average NI Clean Cattle Price

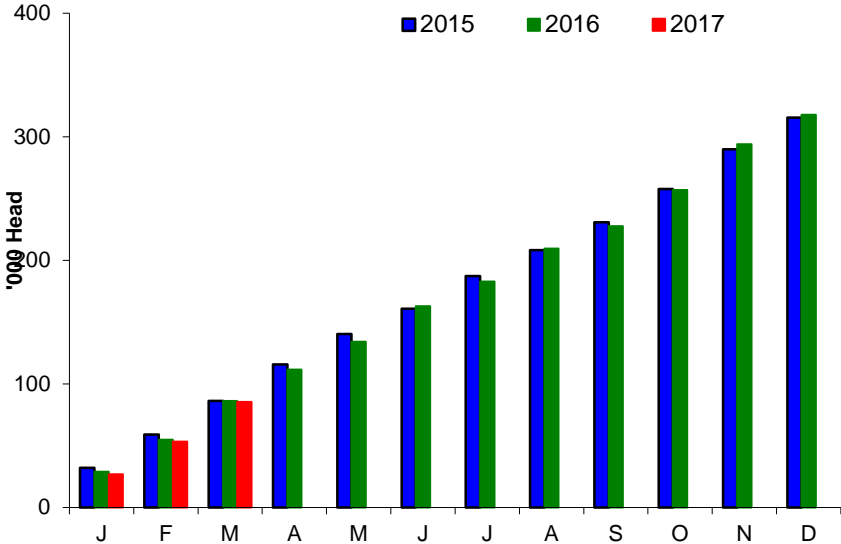


Average NI Cow Price

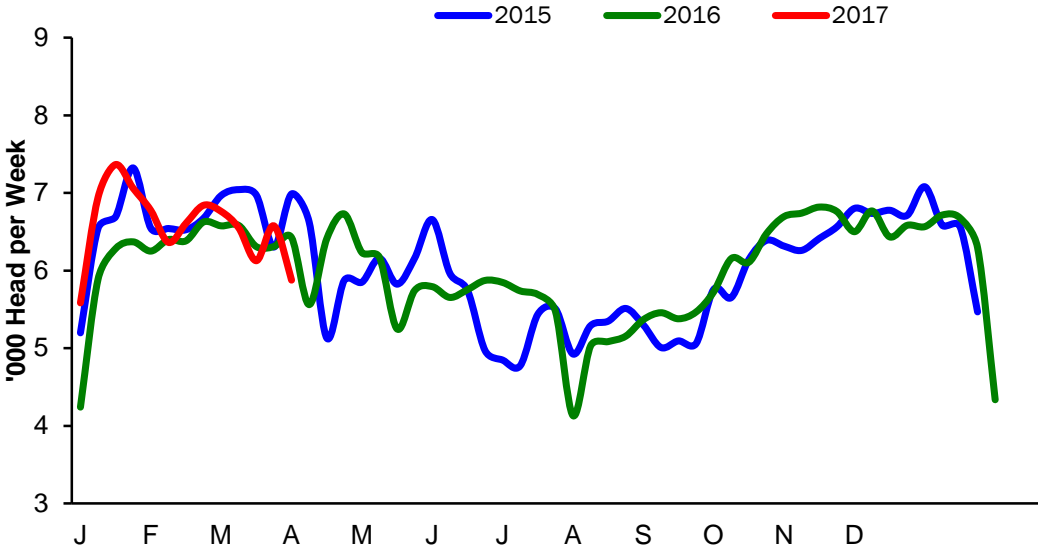


Cattle Slaughtering

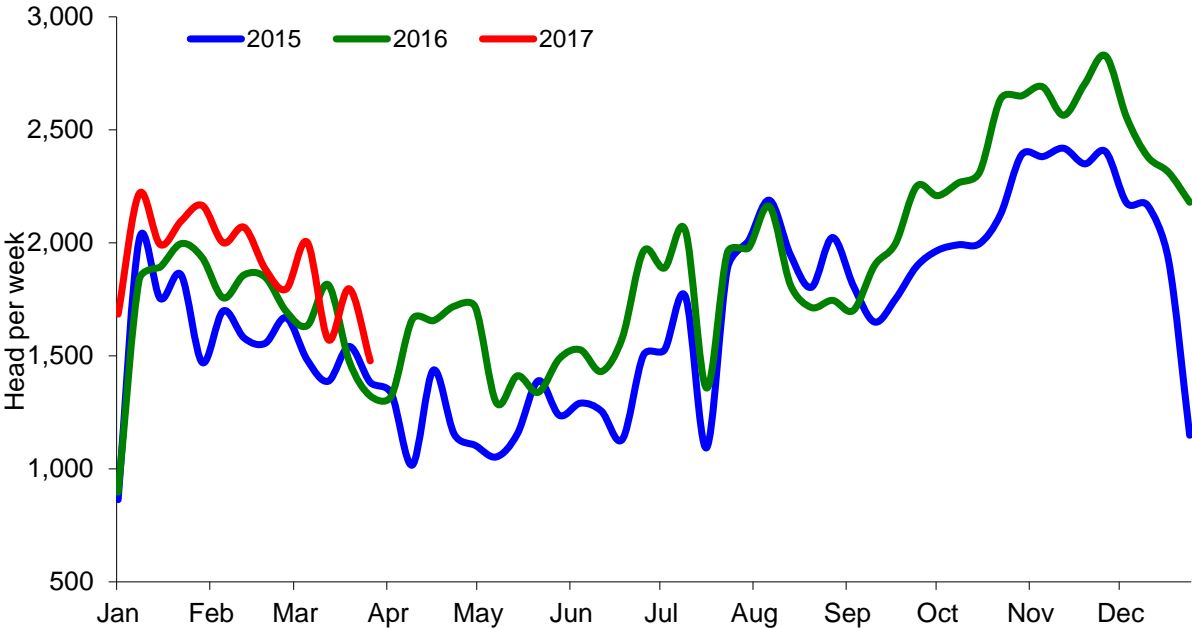
NI Clean Cattle Slaughtering – Cumulative



NI Weekly Clean Cattle Slaughtering

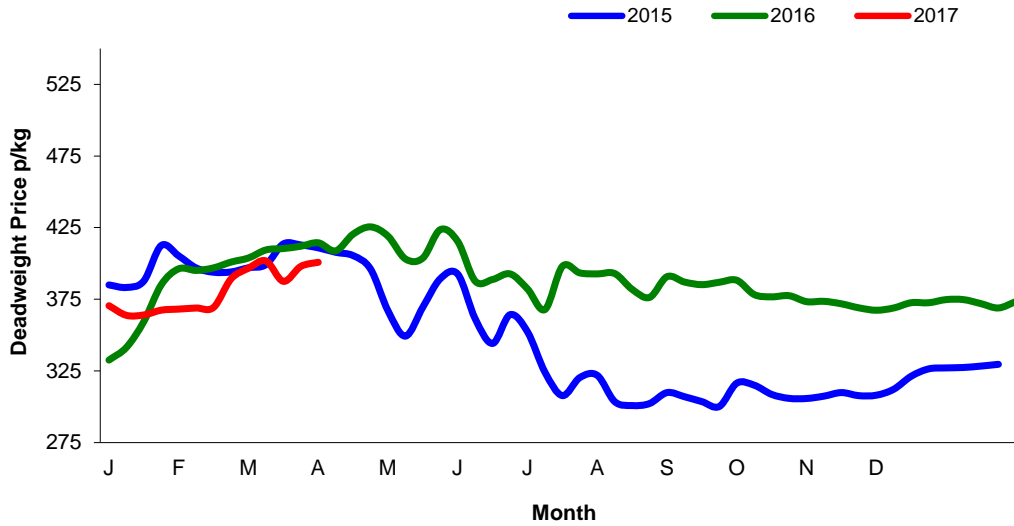


NI Weekly Cow Slaughtering



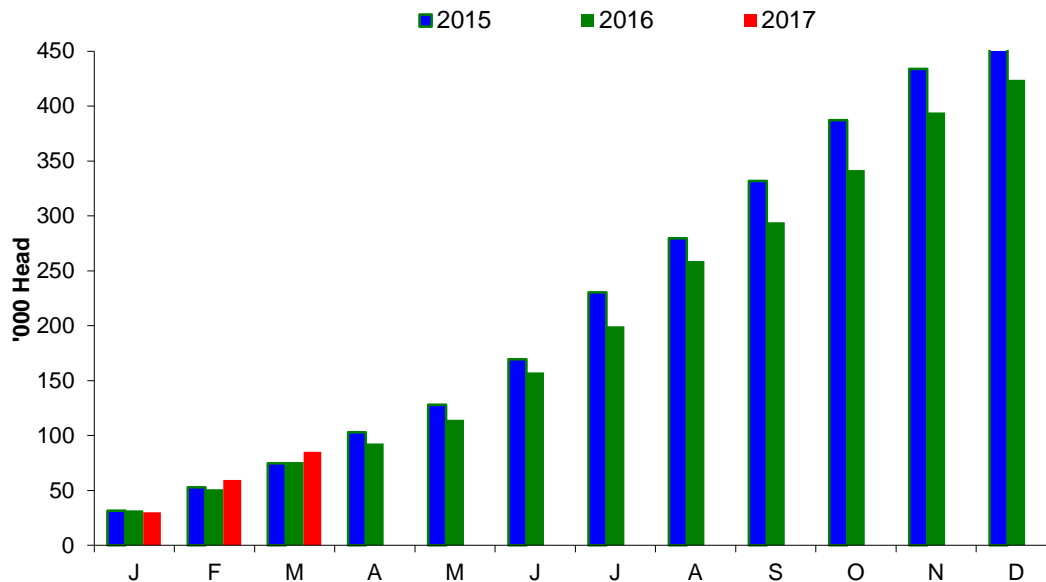
Sheep Prices

Average Deadweight NI Hogget / Lamb Price

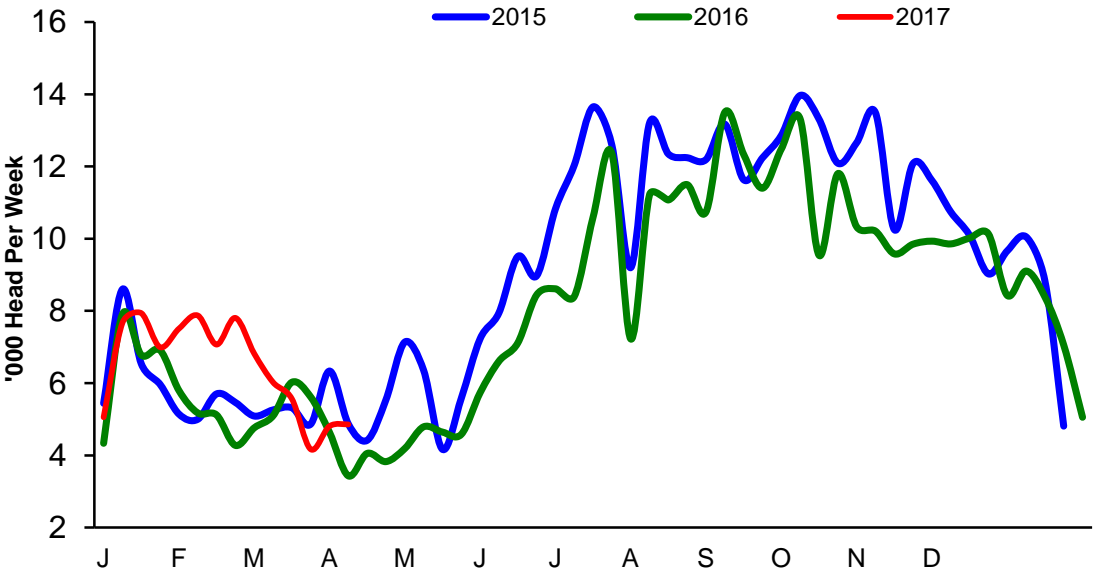


Sheep Slaughterings

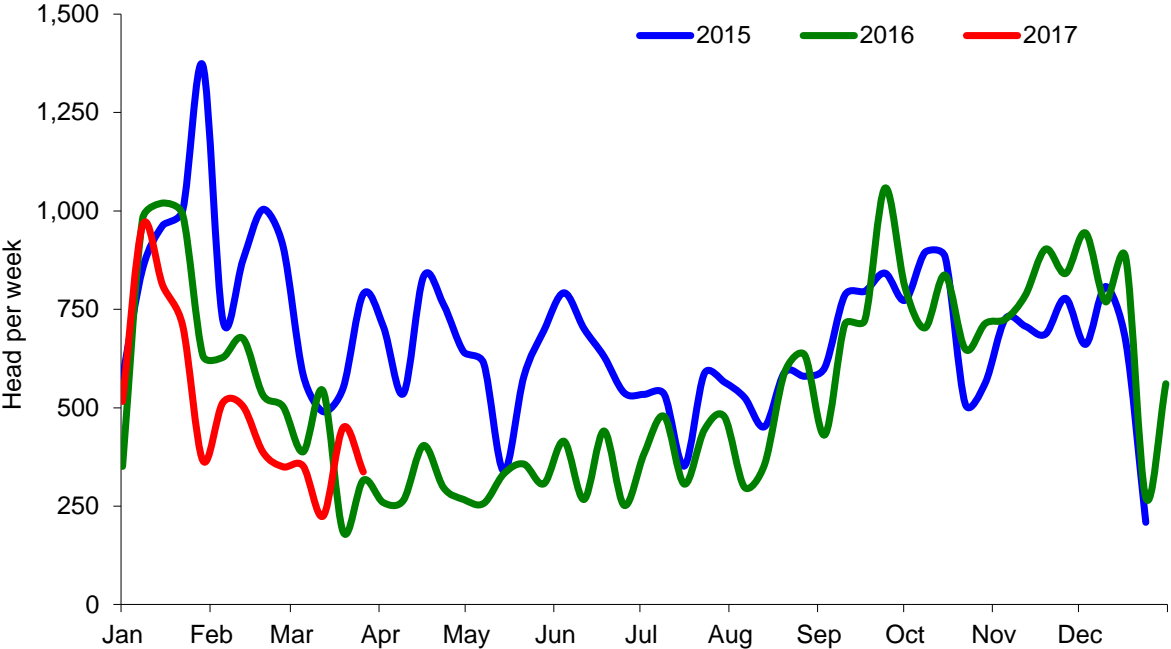
Cumulative Lamb & Hogget Slaughterings



Total Weekly Lamb & Hogget Slaughtering



Total Weekly Ewe and Ram Slaughtering



Market Information March 2017
Page 8

NI CATTLE AND SHEEP SLAUGHTERINGS FOR THE FOODCHAIN						
	March			Year to Date		
	(5 weeks ended 01/04/17)			(52 weeks ended 01/04/17)		
	Mar-16	Mar-17	% Change	2015	2016	Change
CATTLE						
Steers	16,218	16,534	+2%	166,595	164,395	-1%
Heifers	11,584	12,548	+8%	115,705	116,772	+1%
Young Bulls / Calves	3,383	2,809	-17%	33,127	36,020	+9%
Total Prime Cattle	31,185	31,891	+2%	315,427	317,187	+1%
Calves	641	526	-18%	6,686	7,450	+11%
Cows	7,570	8,646	+14%	90,141	101,413	+13%
Mature Bulls	309	278	-10%	3,992	4,135	+4%
Total Cattle	39,705	41,341	+4%	416,246	430,185	+3%
SHEEP						
Lambs & Hoggets	24,806	25,423	+2%	468,469	433,131	-8%
Ewes & Rams	1,689	1,714	+1%	32,984	27,625	-16%
Total Sheep	26,495	27,137	+2%	501,453	460,756	-8%
The above figures are provisional; any amendments will be incorporated in the cumulative data (source DAERA).						

NI BEEF AND SHEEPMEAT PRODUCTION - FOODCHAIN						
	March			Year to Date		
	(5 weeks ended 01/04/17)			(52 weeks ended 01/04/17)		
	Mar-16	Mar-17	% Change	2015	2016	Change
BEEF						
Steers	5,822	5,746	-1%	59,302	57,750	-3%
Heifers	3,753	3,921	+4%	37,191	36,851	-1%
Young Bulls	1,130	911	-19%	11,217	11,809	+5%
Total Prime Beef	10,704	10,578	-1%	107,710	106,410	-1%
Calves	133	103	-23%	1,404	1,536	+9%
Cows	2,329	2,561	+10%	27,644	30,231	+9%
Mature Bulls	137	134	-2%	1,812	1,914	+6%
Total Beef	13,304	13,376	+1%	138,570	140,092	+1%
SHEEPMEAT						
Lambs & Hoggets	551	582	+6%	10,128	9,143	-10%
Ewes & Rams	47	49	+6%	924	768	-17%
Total Sheepmeat	597	632	+6%	11,052	9,911	-10%
The above figures are provisional; any amendments will be incorporated in the cumulative data (source DAERA).						

Market Information March 2017
Page 9

Total Carcase Weight Produced for the Food Chain
Year-to-Date (tonnes – t.)

Month	Prime Cattle		Cows & Bulls		Lambs/Hoggets		Ewes & Rams	
	2016	2017	2016	2017	2016	2017	2016	2017
January	8,471	9,001	2,489	2,527	599	675	98	82
February	8,906	8,854	2,334	2,581	422	666	61	50
March	10,704	10,578	2,466	2,695	551	582	47	49
April								
May								
June								
July								
August								
September								
October								
November								
December								
Total	28,082	28,434	7,289	7,803	1,572	1,924	206	181
Change (t.)	352		514		352		-25	
% Change	1.25%		7.05%		22.40%		-12.11%	

**excludes calves*

Change in Throughput / Production

Last 4 weeks 2016/2017

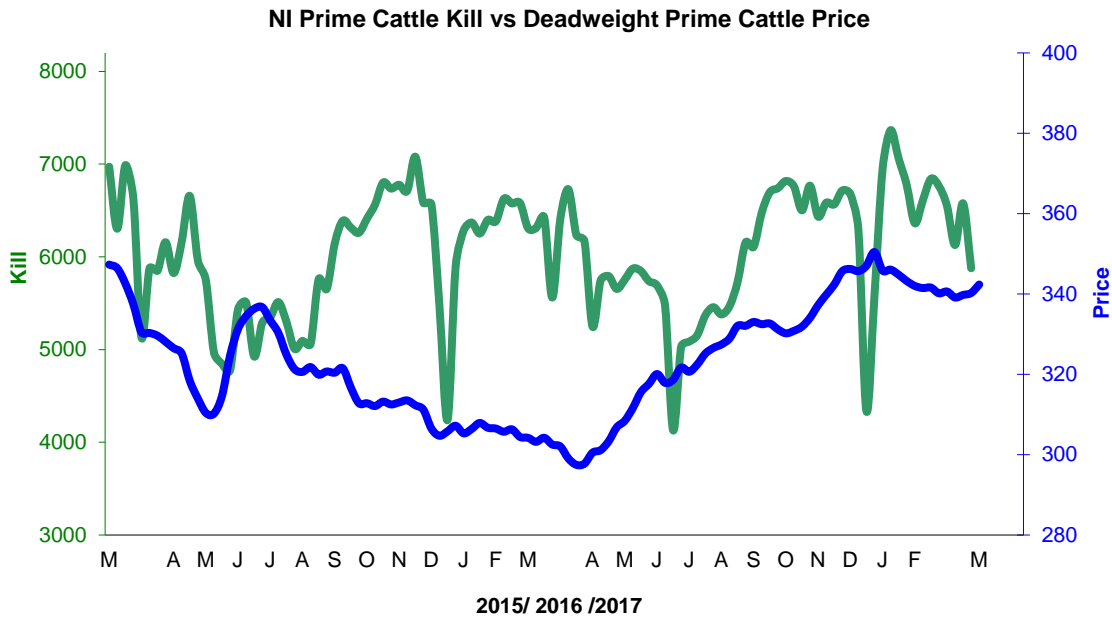
Change in Throughput / Production 2016/2017

March

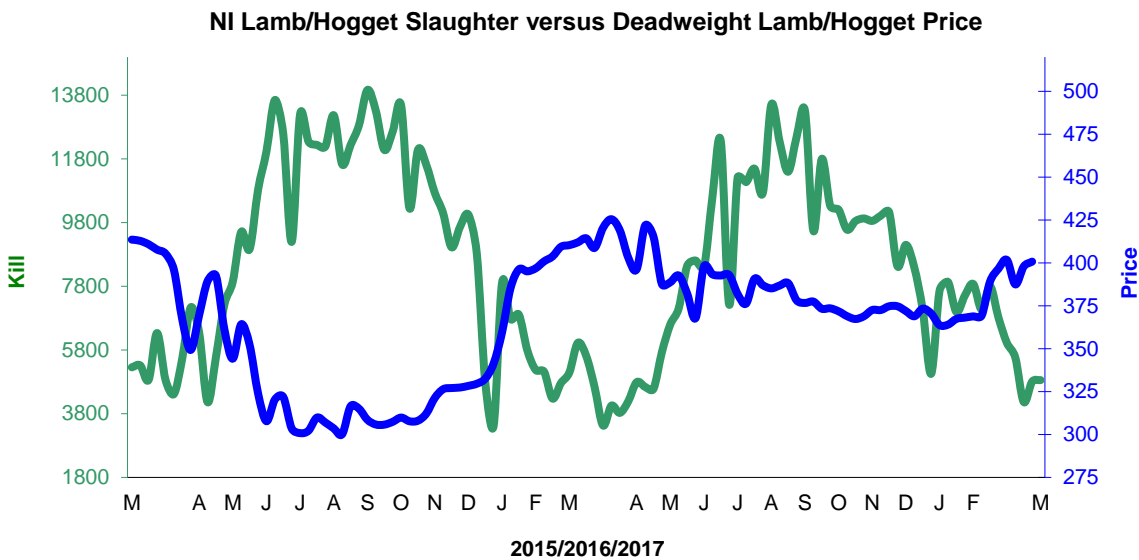
2016/2017	Number	Tonnage	ACW Kg
Prime	2.3%	-1.2%	-11.64
Cows	14.2%	10.0%	-10.87
Total	4.1%	0.5%	-11.65
Lamb	2.5%	5.8%	0.74
Ewes and Rams	1.5%	-19.6%	0.60
Total Sheep	2.4%	5.8%	0.74

Supply and Price

NI Clean Cattle Kill vs. Average Clean Cattle Price



NI Lamb/Hogget Kill vs. Average Lamb / Hogget Price

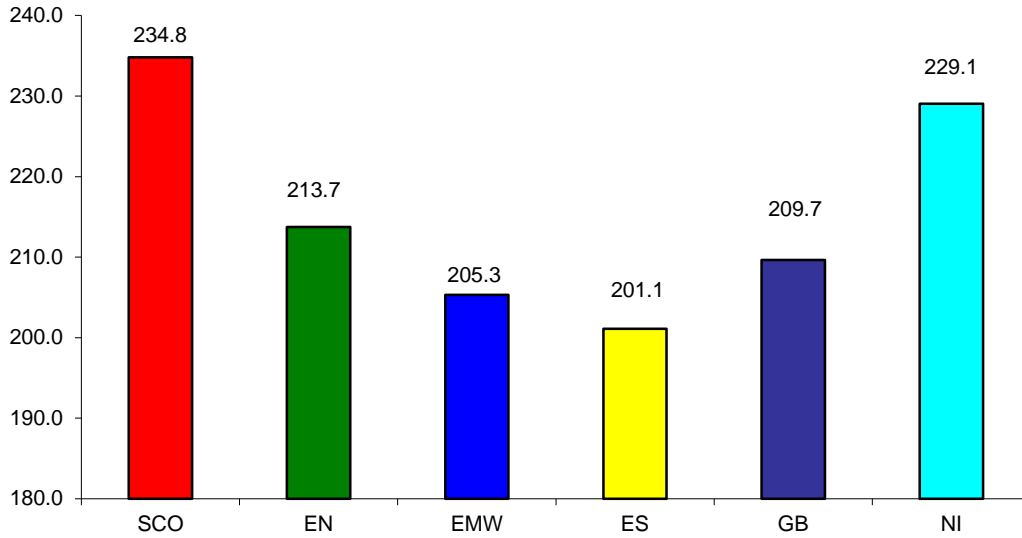


Green	Supply (Kill)
Blue	Price

BRITISH ISLES COMPARISONS

UK Average Cow Prices

52 Weeks to 31 March 2017

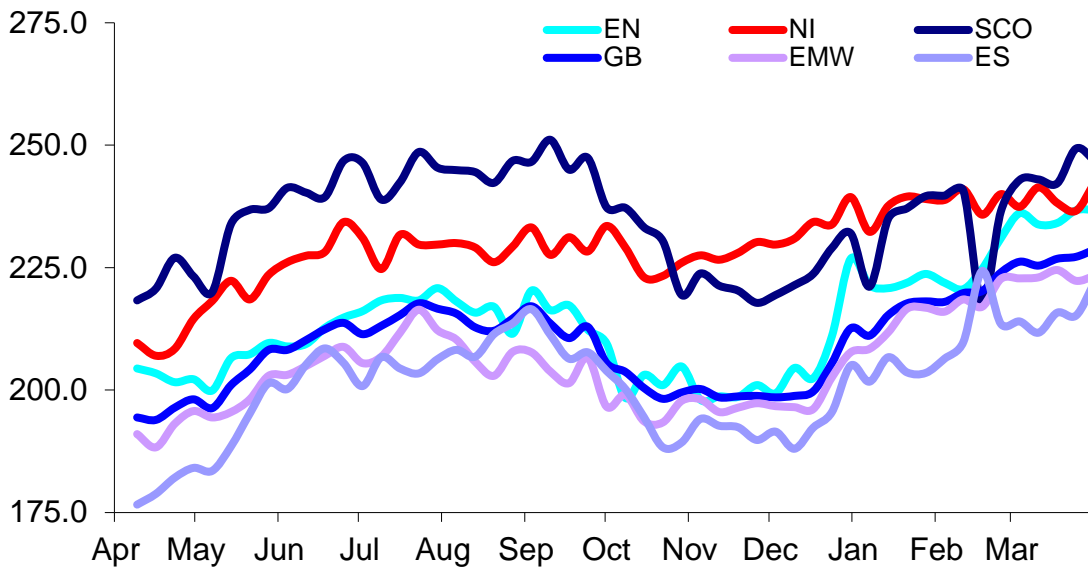


SCO	Scotland
EN	England North
EMW	England Midlands and Wales
ES	England South
NI	Northern Ireland
GB	Great Britain

Prices relate to UK Dressing Specification

Weekly UK Cow Prices

52 Weeks to 31 March 2017

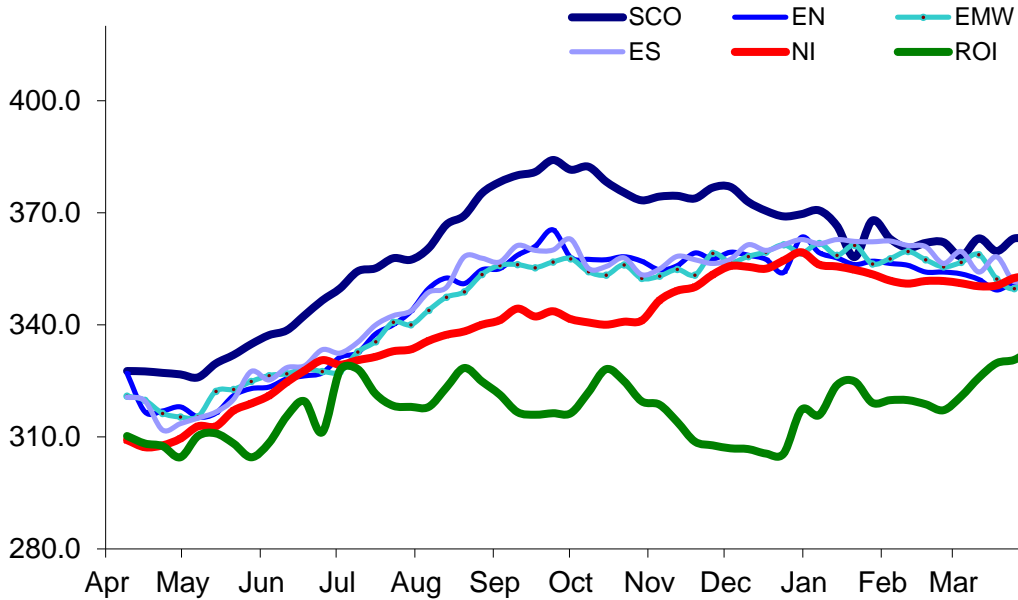


Market Information March 2017
Page 12

Prices relate to UK Dressing Specification

British Isles R3 Steer Price

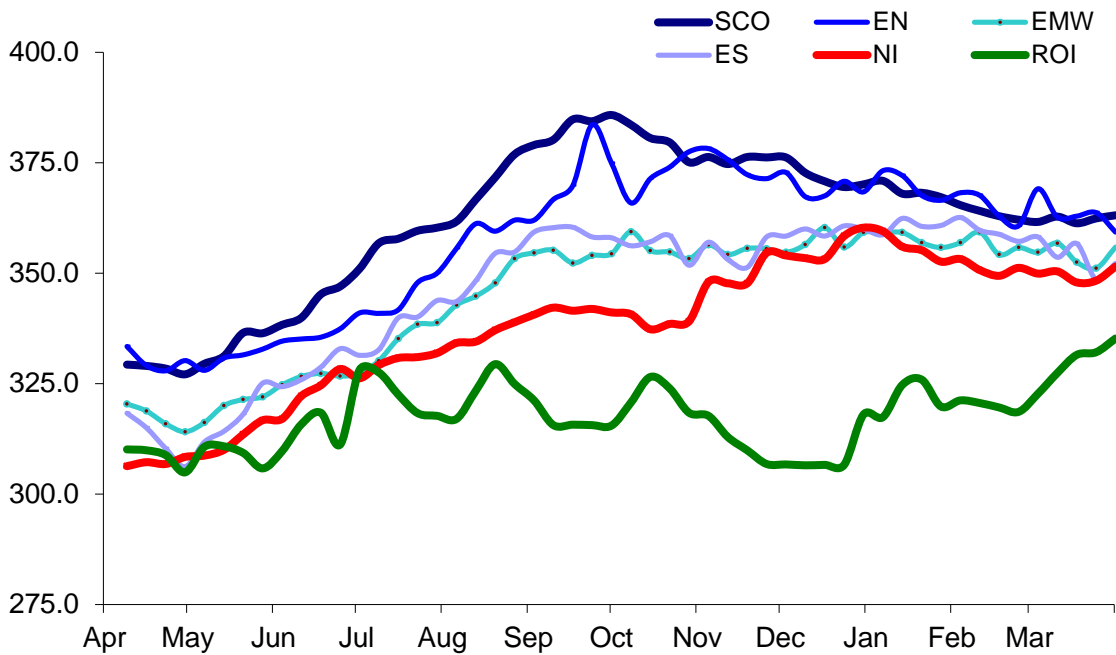
52 Weeks to 31 March 2017



Prices relate to UK Dressing Specification

British Isles R4 Steer Price

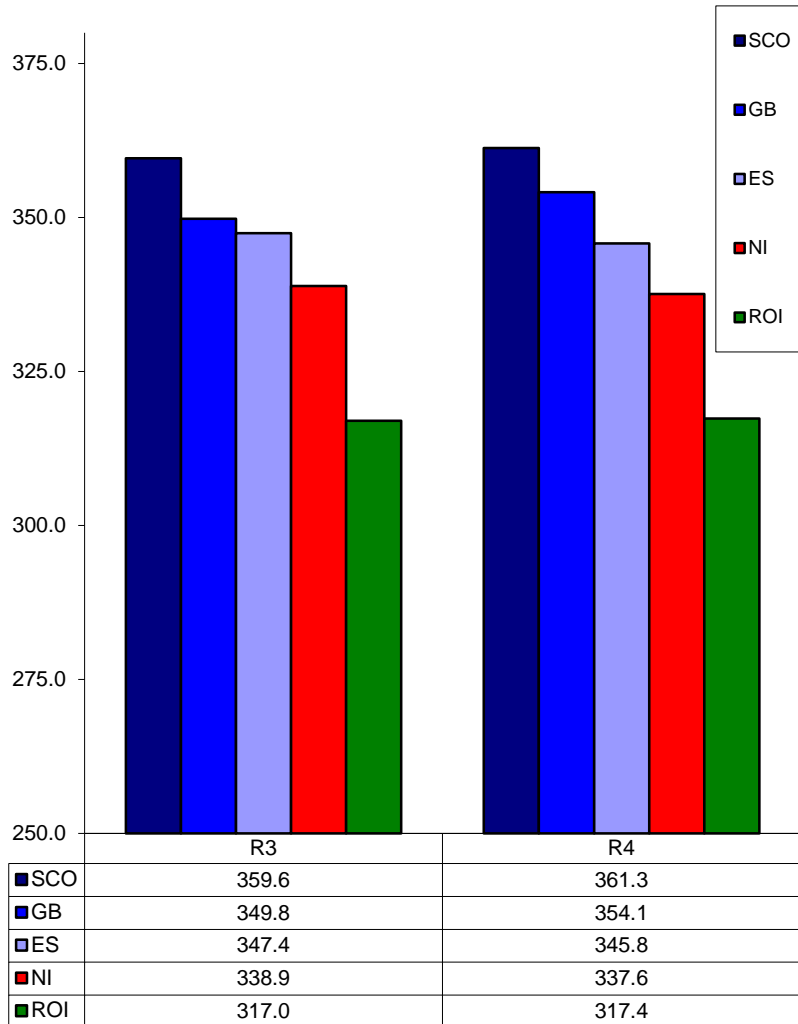
52 Weeks to 31 March 2017



Prices relate to UK Dressing Specification

British Isles Average R3 and R4 Steer price

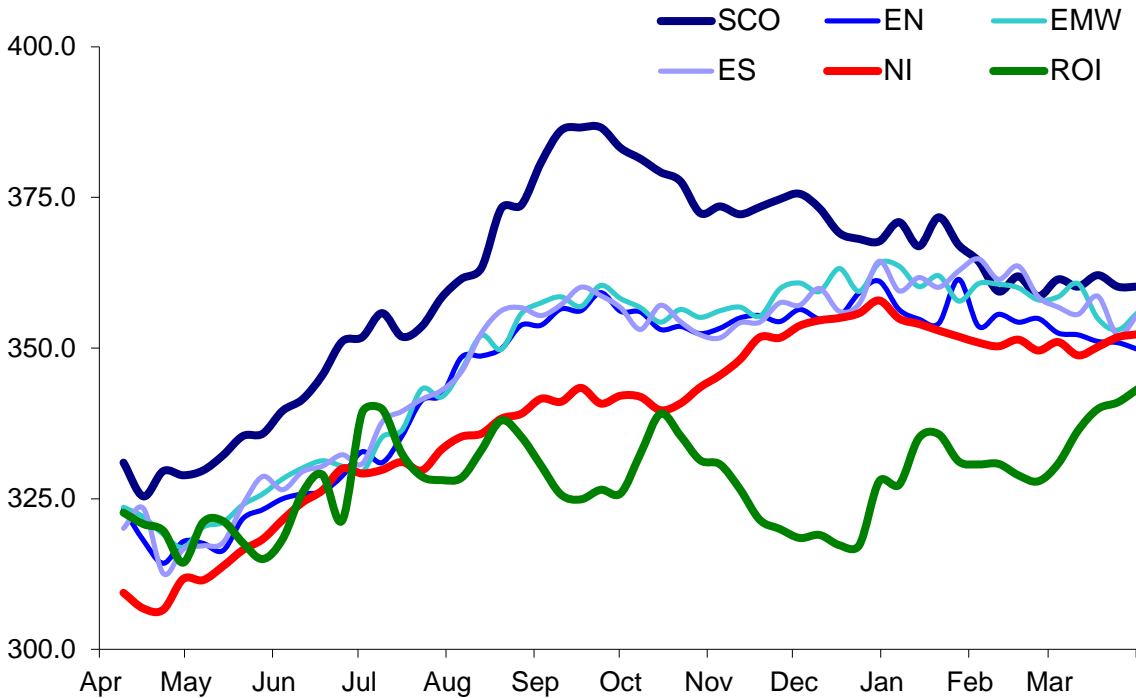
52 Weeks to 31 March 2017



Prices relate to UK Dressing Specification

British Isles R3 Heifer Price

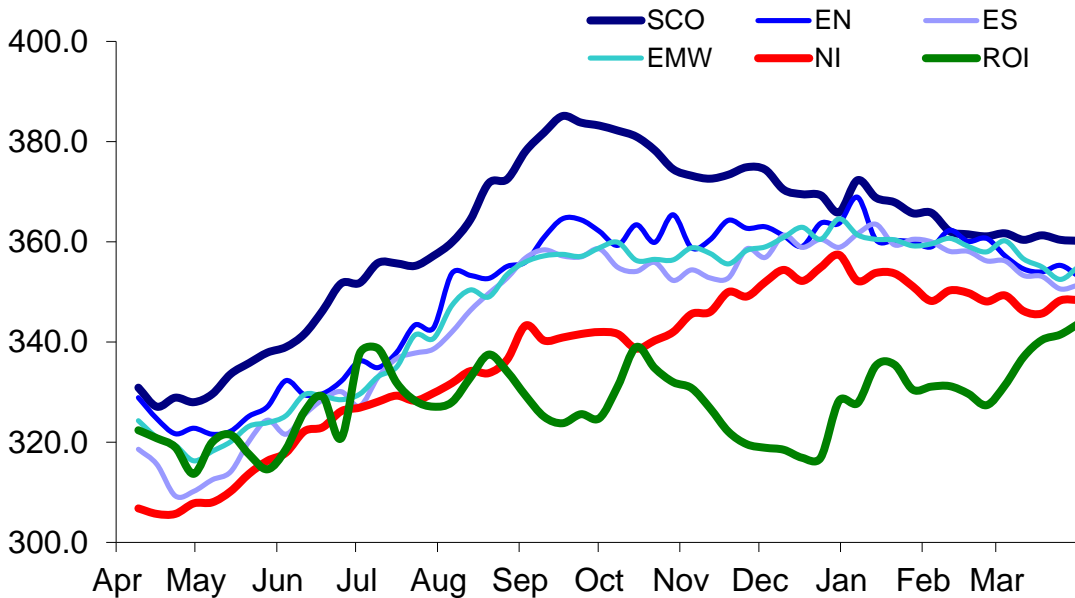
52 Weeks to 31 March 2017



Prices relate to UK Dressing Specification

British Isles R4 Heifer Price

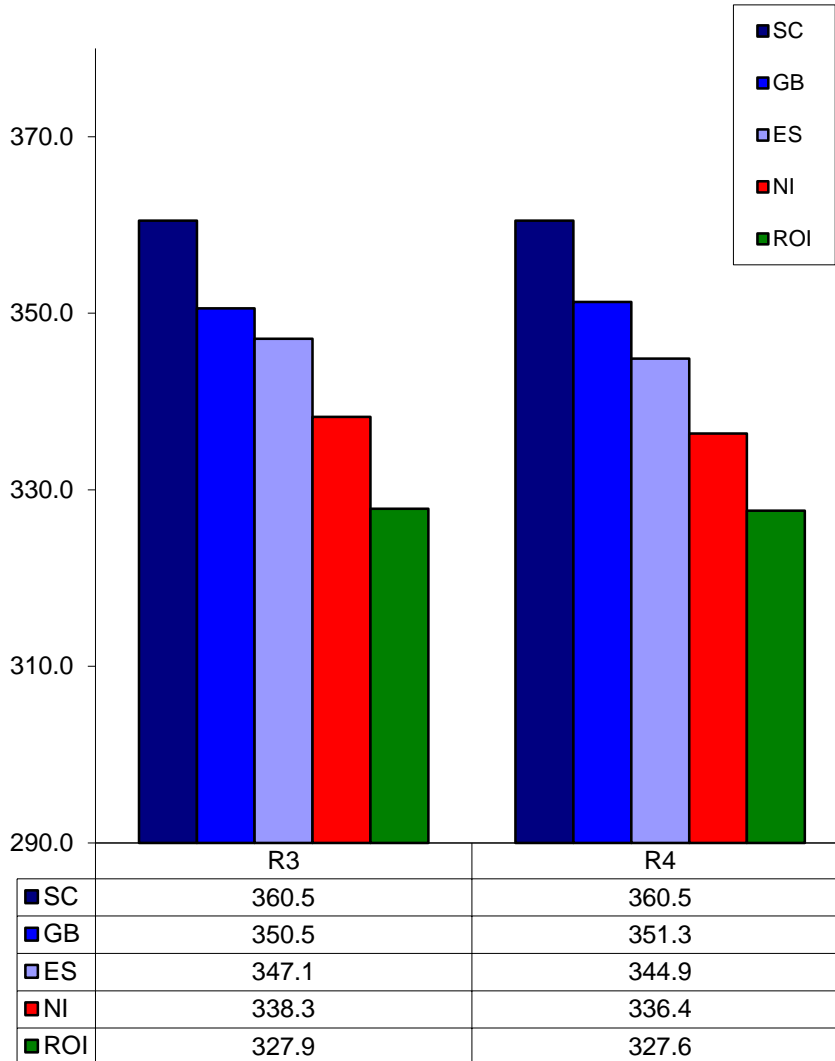
52 Weeks to 31 March 2017



Prices relate to UK Dressing Specification

British Isles Average R3 and R4 Heifer price

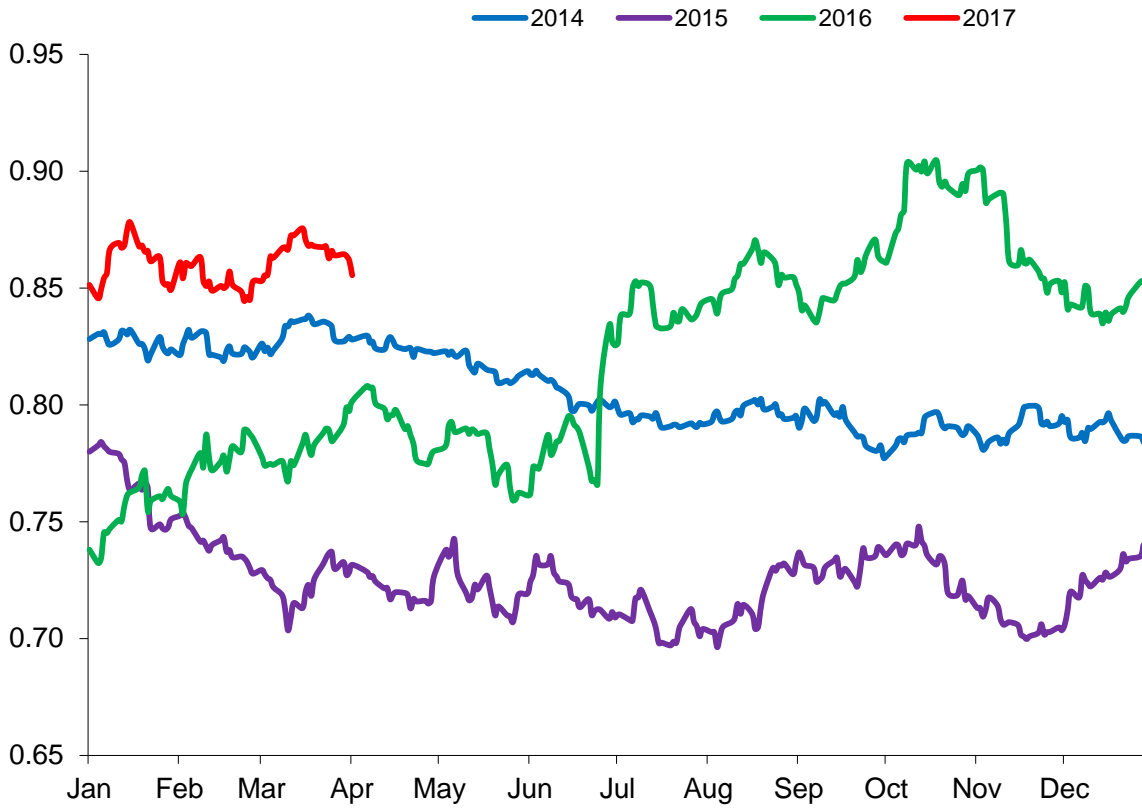
52 Weeks to 31 March 2017



Prices relate to UK Dressing Specification

Exchange Rate £ / Euro

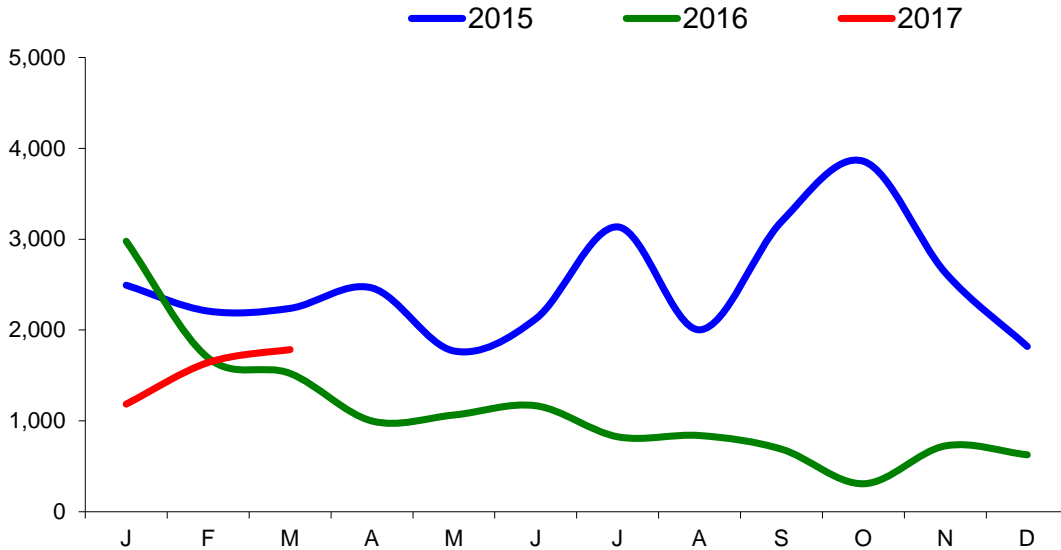
01 January 2013 –31 March 2017



Imports

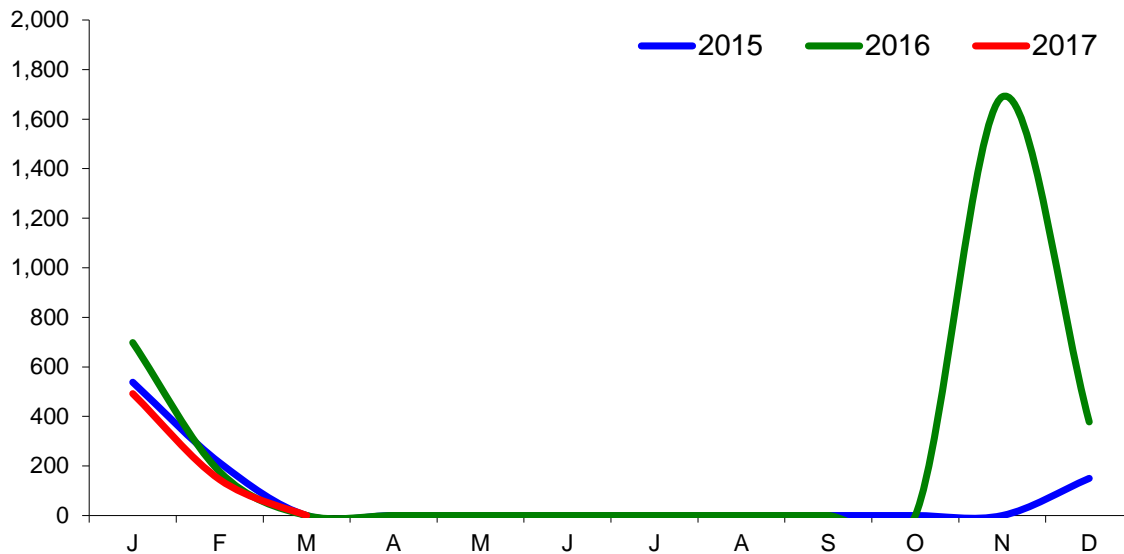
Monthly Live Imports of Cattle into NI for Direct Slaughter

From ROI and GB Combined



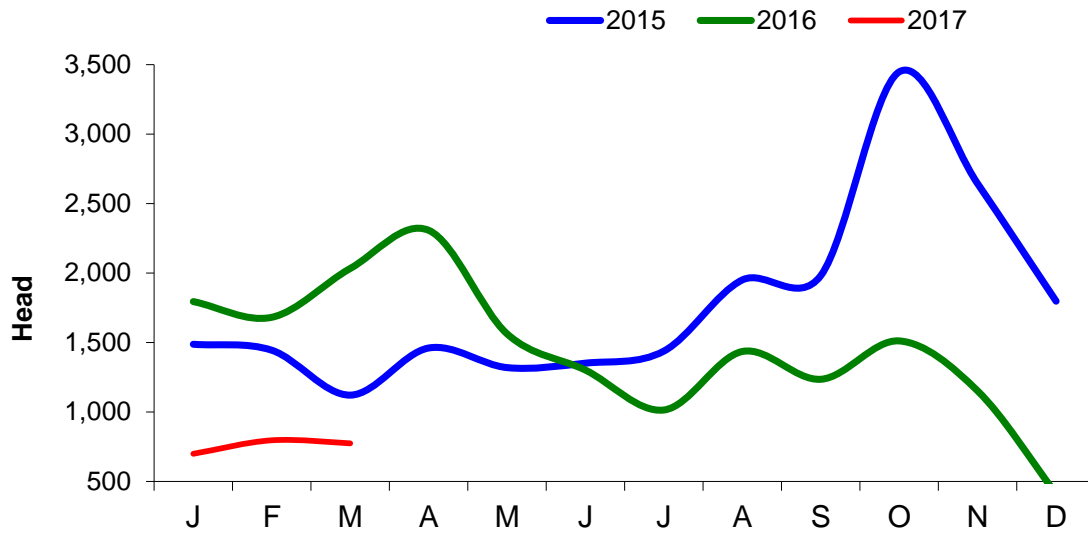
Monthly Live Imports of Sheep into NI for Direct Slaughter

From ROI and GB Combined



Exports

Monthly Live Exports of Cattle from NI into ROI and GB



Monthly Live Exports of Sheep from NI into ROI and GB

