



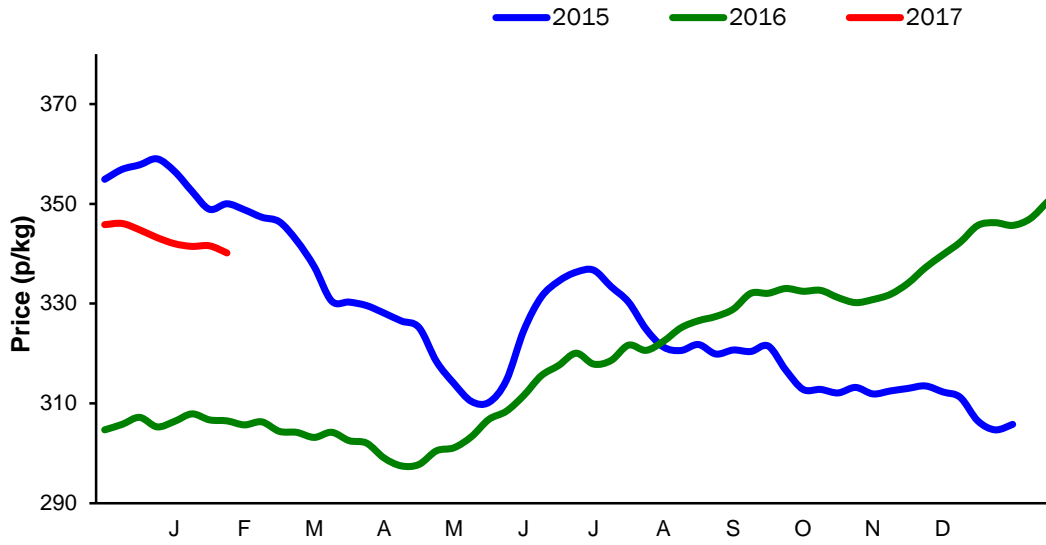
Monthly Economic Review
February 2017

Contents

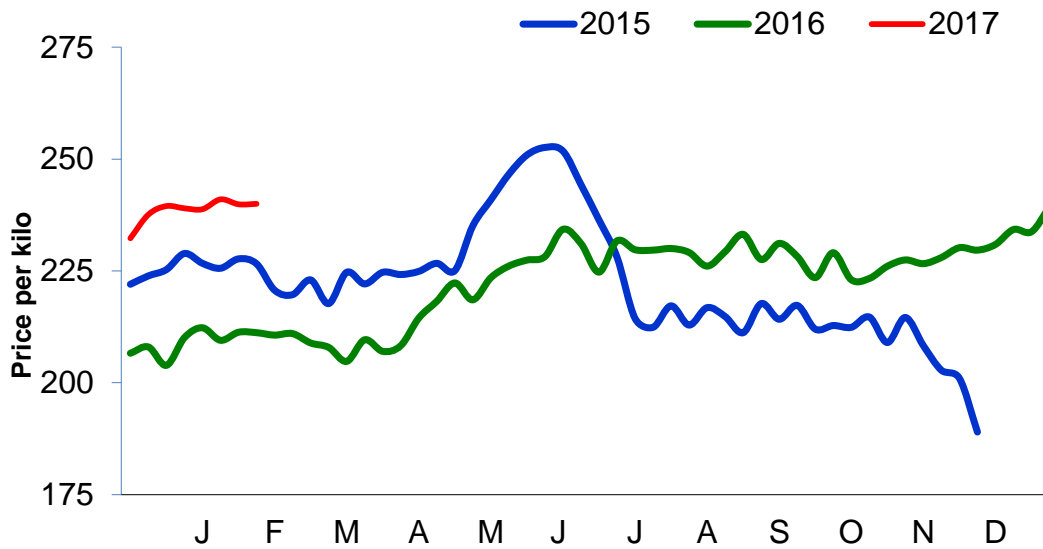
Contents.....	2
Cattle Prices	4
Average NI Clean Cattle Price	4
Average NI Cow Price.....	4
Cattle Slaughtering.....	5
NI Clean Cattle Slaughtering – Cumulative	5
NI Weekly Clean Cattle Slaughtering.....	5
NI Weekly Cow Slaughtering	5
Sheep Prices.....	6
Average NI Lamb / Hogget Price	6
Sheep Slaughtering.....	7
Cumulative Lamb & Hogget Slaughtering	7
Total Weekly Lamb & Hogget Slaughtering	7
Total Weekly Ewe and Ram Slaughtering.....	7
Total Carcase Weight Produced for the Food Chain.....	8
Change in Throughput / Production	9
Supply and Price.....	10
NI Lamb/Hogget Kill vs. Average Lamb / Hogget Price	10
NI Clean Cattle Kill vs. Average Clean Cattle Price.....	10
British Isles Price Comparisons	11
UK Average Cow Prices	11
Weekly UK Cow Prices	11
British Isles R3 Steer Price	12
British Isles R4 Steer Price	12
British Isles Average R3 and R4 Steer price	13
British Isles R3 Heifer Price	14
British Isles R4 Heifer Price	14
British Isles Average R3 and R4 Heifer price.....	15
Exchange Rate £ / Euro	16
Imports.....	17
Monthly Live Imports of Cattle into NI for Direct Slaughter	17
Monthly Live Imports of Sheep into NI for Direct Slaughter	17
Exports	18
Monthly Live Exports of Cattle from NI into RoI and GB.....	18
Monthly live Exports of Sheep from NI into RoI and GB	18

Cattle Prices

Average NI Clean Cattle Price

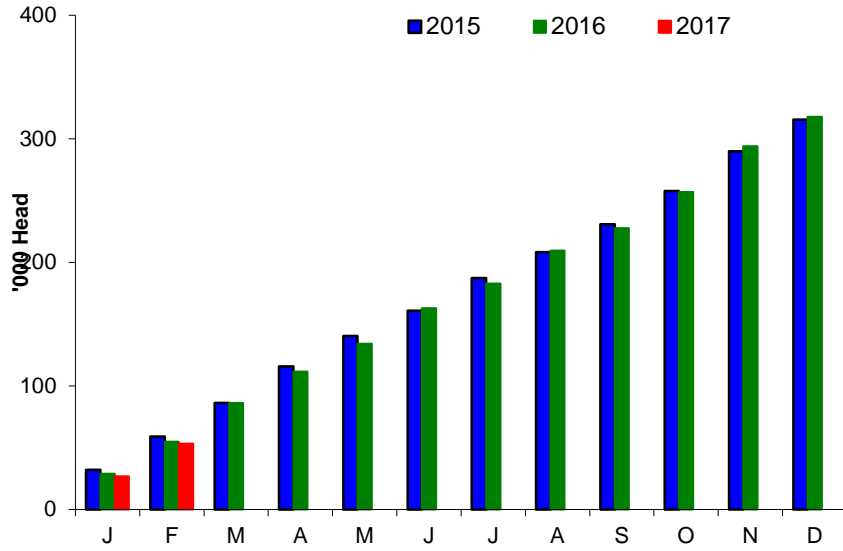


Average NI Cow Price

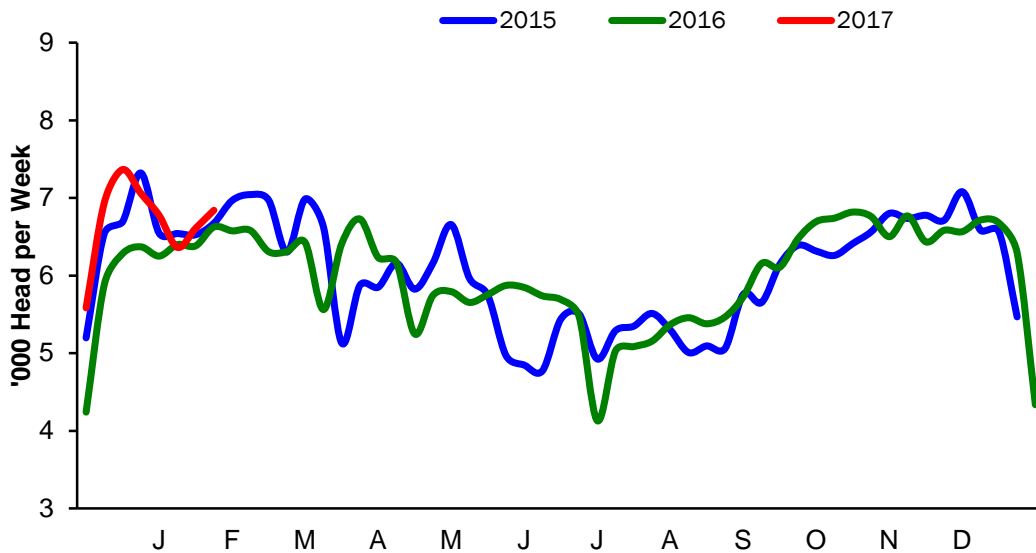


Cattle Slaughtering

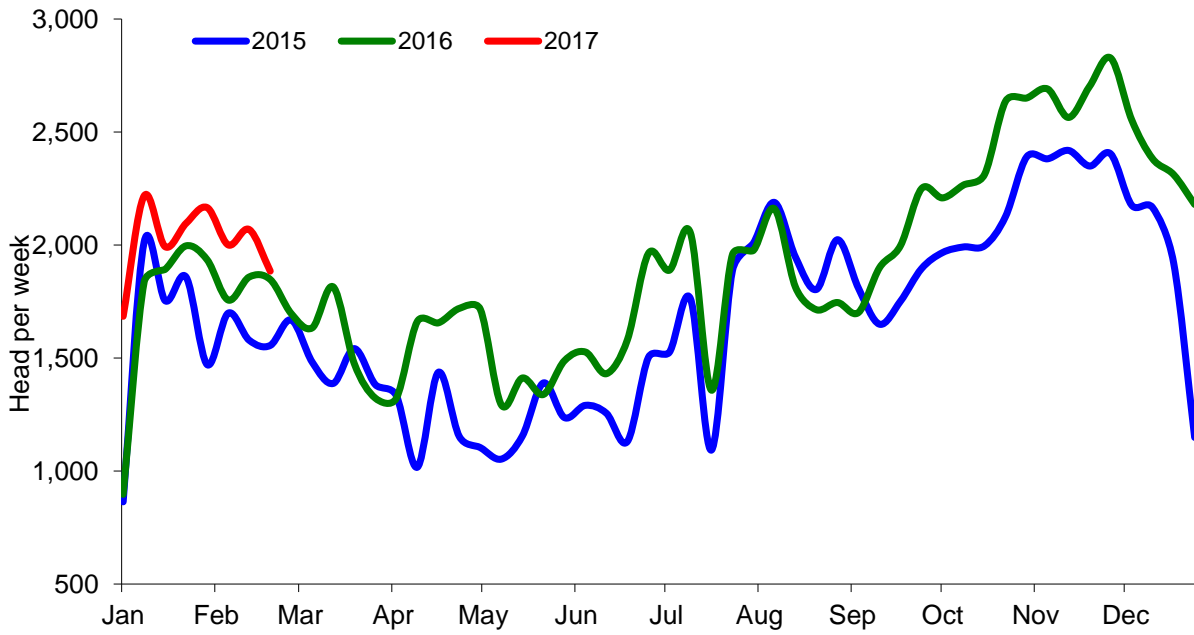
NI Clean Cattle Slaughtering – Cumulative



NI Weekly Clean Cattle Slaughtering

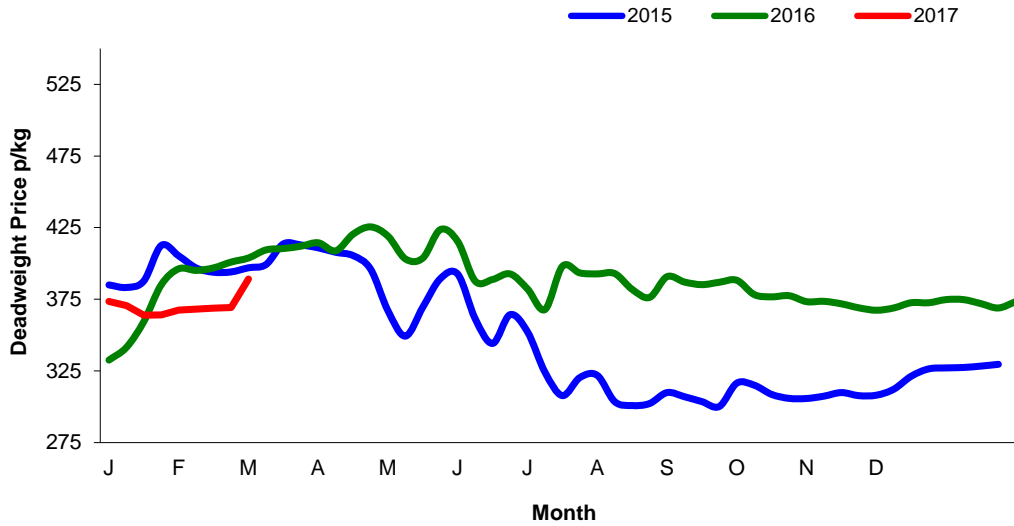


NI Weekly Cow Slaughtering



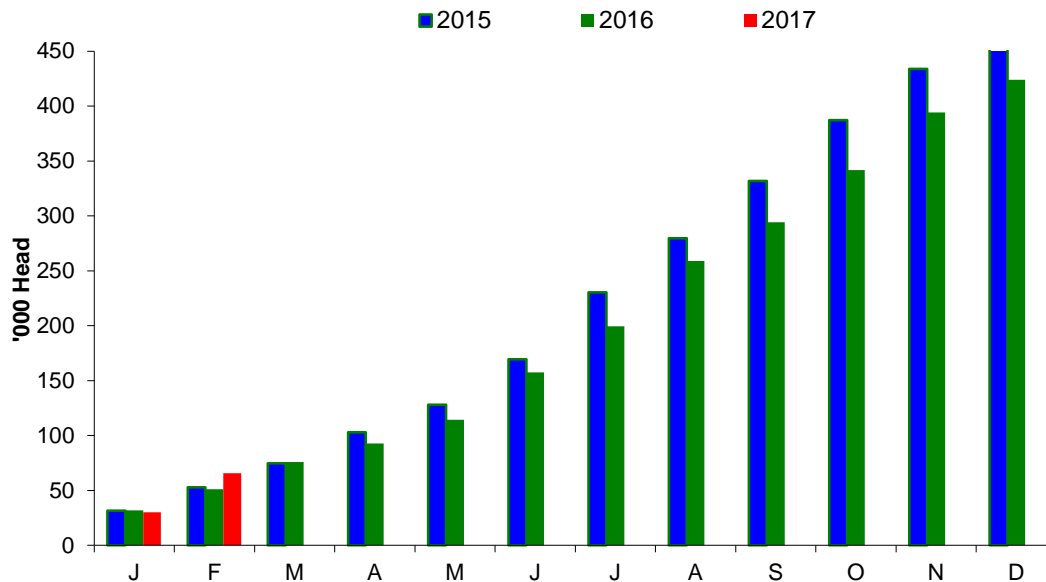
Sheep Prices

Average Deadweight NI Hogget / Lamb Price

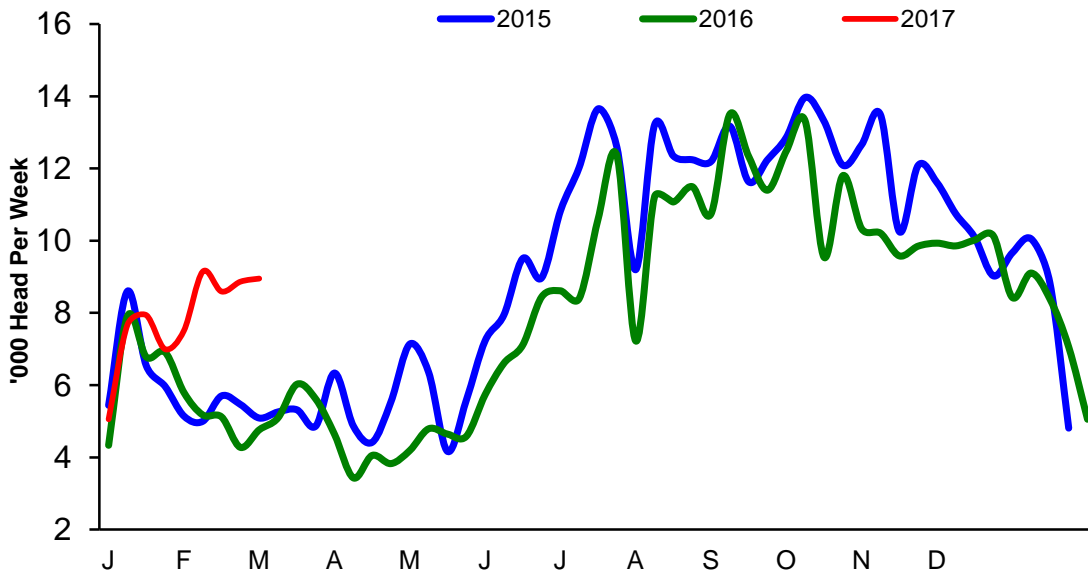


Sheep Slaughterings

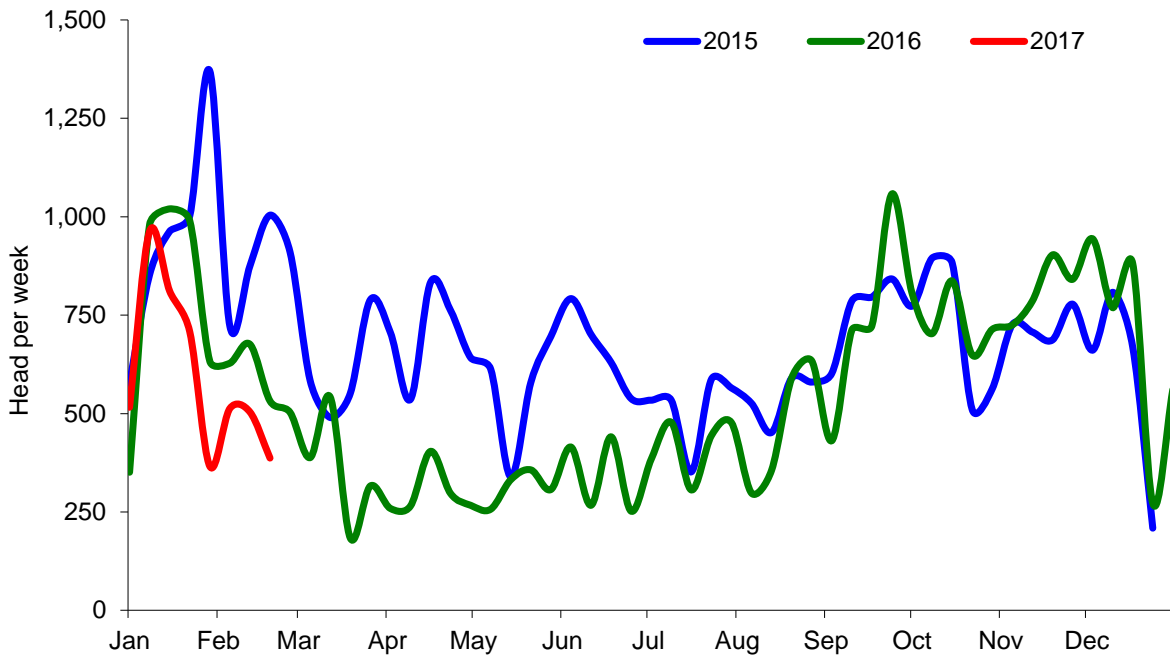
Cumulative Lamb & Hogget Slaughterings



Total Weekly Lamb & Hogget Slaughtering



Total Weekly Ewe and Ram Slaughtering



Market Information February 2017
Page 8

NI CATTLE AND SHEEP SLAUGHTERINGS FOR THE FOODCHAIN						
	February			Year to Date		
	(4 weeks ended 25/02/17)			(47 weeks ended 25/02/17)		
	Feb-16	Feb-17	% Change	2015	2016	Change
CATTLE						
Steers	13,422	13,570	+1%	150,377	147,861	-2%
Heifers	9,649	10,633	+10%	104,121	104,224	+0%
Young Bulls / Calves	2,913	2,385	-18%	29,744	33,211	+12%
Total Prime Cattle	25,984	26,588	+2%	284,242	285,296	+0%
Calves	536	587	+10%	6,045	6,924	+15%
Cows	7,161	8,121	+13%	82,571	92,767	+12%
Mature Bulls	281	257	-9%	3,683	3,857	+5%
Total Cattle	33,962	35,553	+5%	376,541	388,844	+3%
SHEEP						
Lambs & Hoggets	19,332	29,567	+53%	443,663	407,708	-8%
Ewes & Rams	2,339	1,770	-24%	31,295	25,911	-17%
Total Sheep	21,671	31,337	+45%	474,958	433,619	-9%

The above figures are provisional; any amendments will be incorporated in the cumulative data (source DAERA).

NI BEEF AND SHEEPMEAT PRODUCTION - FOODCHAIN						
	February			Year to Date		
	(4 weeks ended 25/02/17)			(47 weeks ended 25/02/17)		
	Feb-16	Feb-17	% Change	2015	2016	Change
BEEF						
Steers	4,817	4,755	-1%	53,480	52,004	-3%
Heifers	3,119	3,342	+7%	33,438	32,930	-2%
Young Bulls	970	757	-22%	10,087	10,898	+8%
Total Prime Beef	8,906	8,854	-1%	97,005	95,832	-1%
Calves	109	110	+1%	1,270	1,433	+13%
Cows	2,208	2,460	+11%	25,315	27,670	+9%
Mature Bulls	126	121	-3%	1,674	1,780	+6%
Total Beef	11,349	11,546	+2%	125,265	126,716	+1%
SHEEPMEAT						
Lambs & Hoggets	422	666	+58%	9,578	8,561	-11%
Ewes & Rams	61	50	-19%	877	719	-18%
Total Sheepmeat	483	716	+48%	10,455	9,279	-11%

The above figures are provisional; any amendments will be incorporated in the cumulative data (source DAERA).

Market Information February 2017
Page 9

Total Carcase Weight Produced for the Food Chain
Year-to-Date (tonnes – t.)

Month	Prime Cattle		Cows & Bulls		Lambs/Hoggets		Ewes & Rams	
	2016	2017	2016	2017	2016	2017	2016	2017
January	8,471	9,001	2,489	2,527	599	675	98	82
February	8,906	8,854	2,334	2,581	422	666	61	50
March								
April								
May								
June								
July								
August								
September								
October								
November								
December								
Total	17,377	17,856	4,823	5,108	1,021	1,341	159	131
Change (t.)	479		286		320		-28	
% Change	2.75%		5.92%		31.36%		-17.32%	

**excludes calves*

Change in Throughput / Production

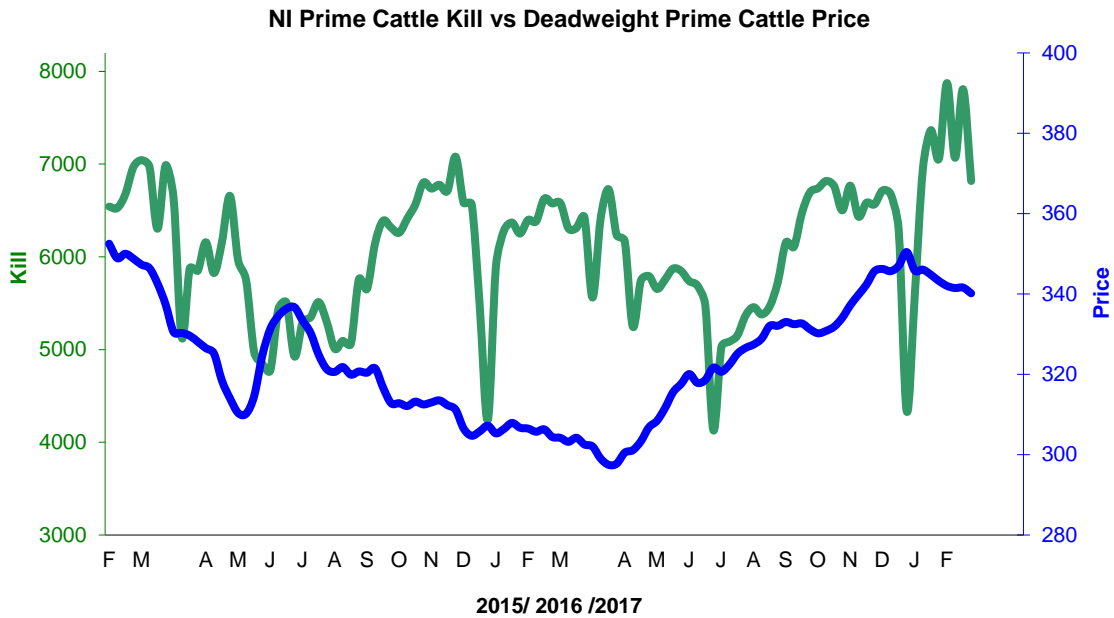
Last 4 weeks 2016/2017

Change in Throughput / Production 2016/2017

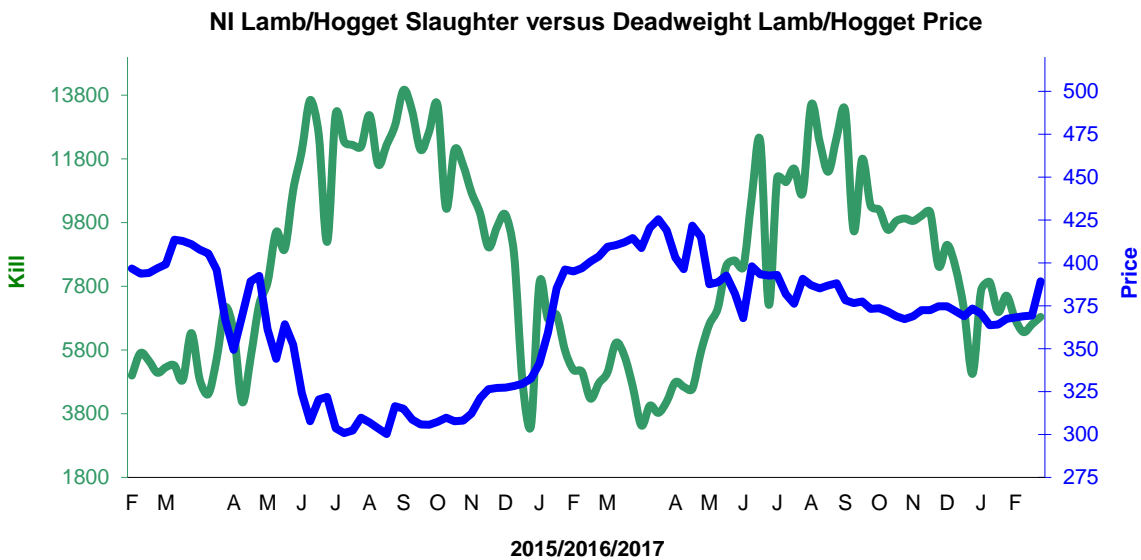
2016/2017	February		
	Number	Tonnage	ACW Kg
Prime	2.3%	-0.6%	-9.80
Cows	13.4%	11.4%	-5.60
Total	4.7%	1.7%	-9.73
Lamb	52.9%	57.8%	0.70
Ewes and Rams	-24.3%	-18.7%	1.95
Total Sheep	44.6%	48.1%	0.53

Supply and Price

NI Clean Cattle Kill vs. Average Clean Cattle Price



NI Lamb/Hogget Kill vs. Average Lamb / Hogget Price

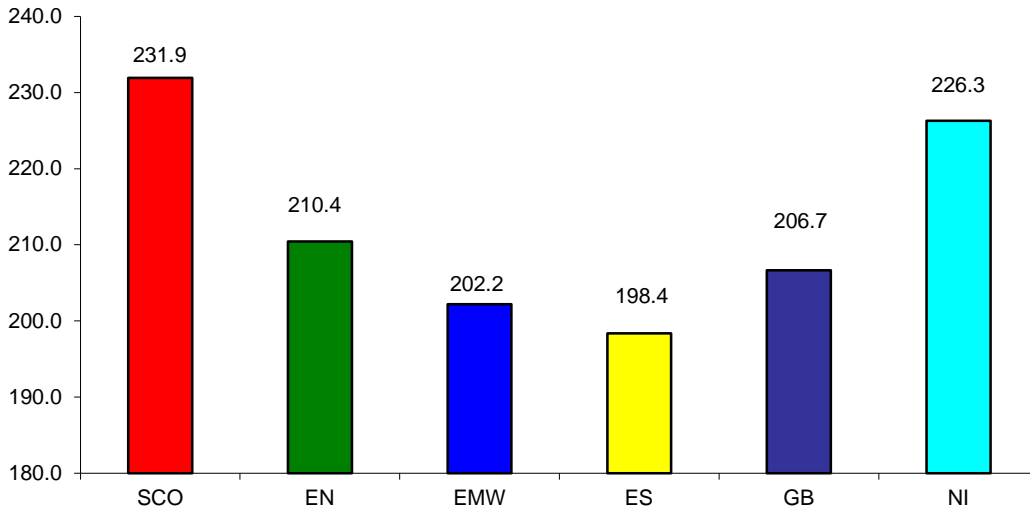


Green	Supply (Kill)
Blue	Price

BRITISH ISLES COMPARISONS

UK Average Cow Prices

52 Weeks to 25 February 2017

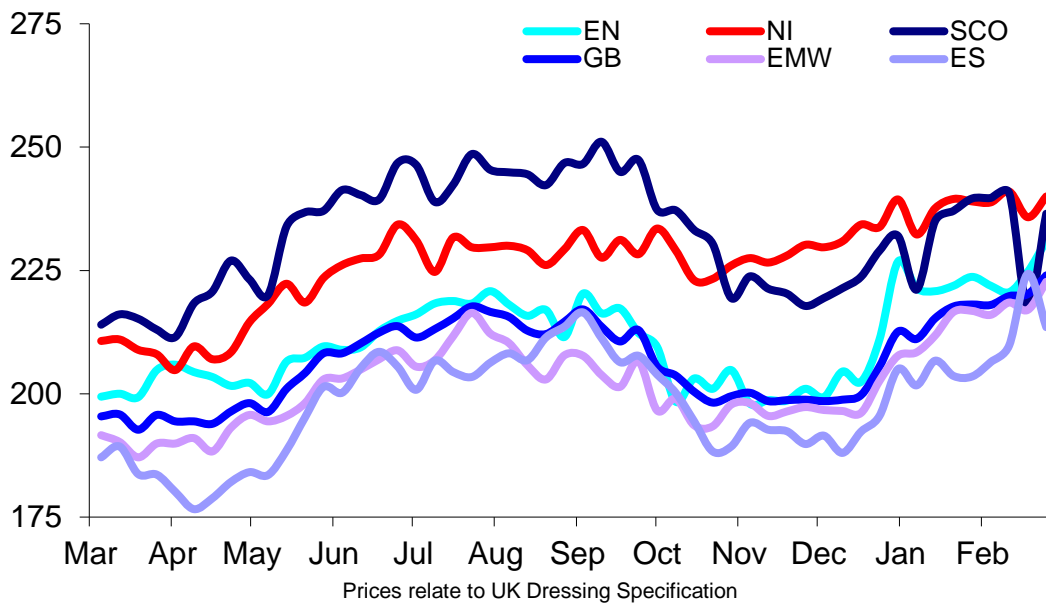


SCO	Scotland
EN	England North
EMW	England Midlands and Wales
ES	England South
NI	Northern Ireland
GB	Great Britain

Prices relate to UK Dressing Specification

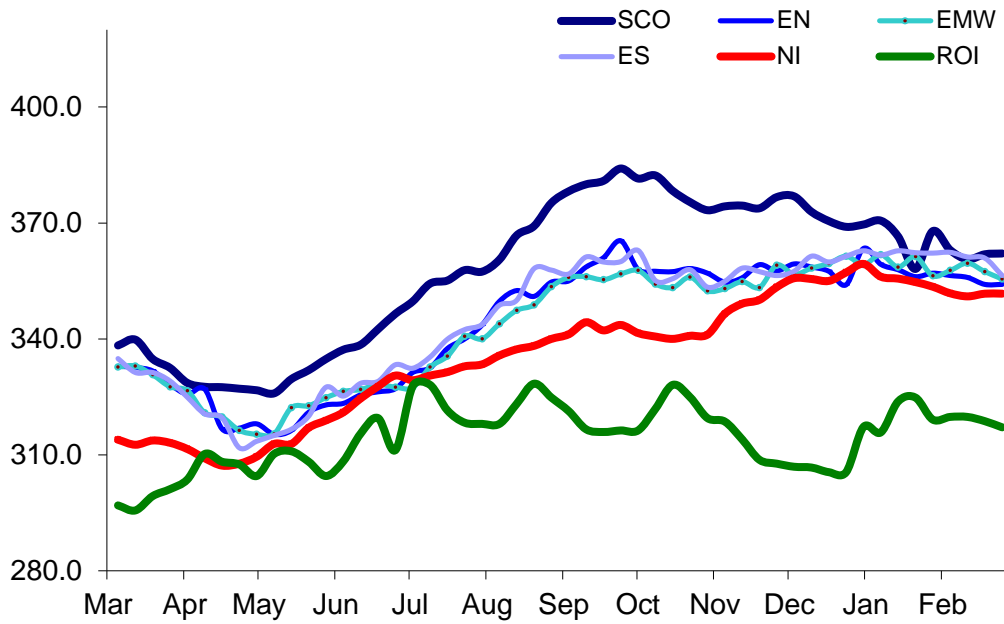
Weekly UK Cow Prices

52 Weeks to 25 February 2017



British Isles R3 Steer Price

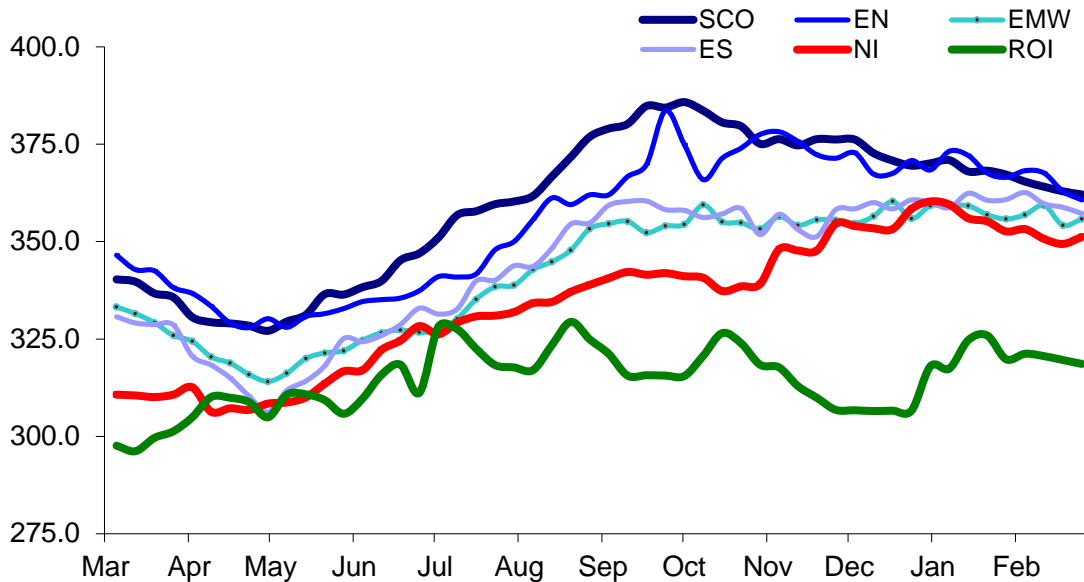
52 Weeks to 25 February 2017



Prices relate to UK Dressing Specification

British Isles R4 Steer Price

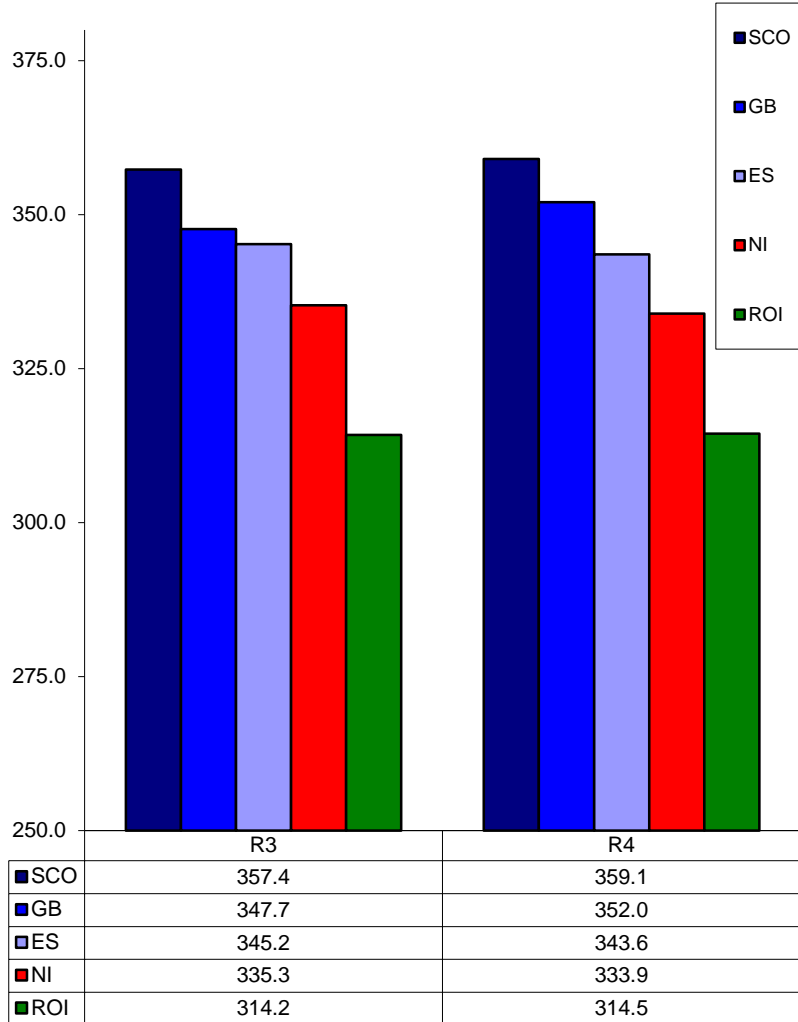
52 Weeks to 25 February 2017



Prices relate to UK Dressing Specification

British Isles Average R3 and R4 Steer price

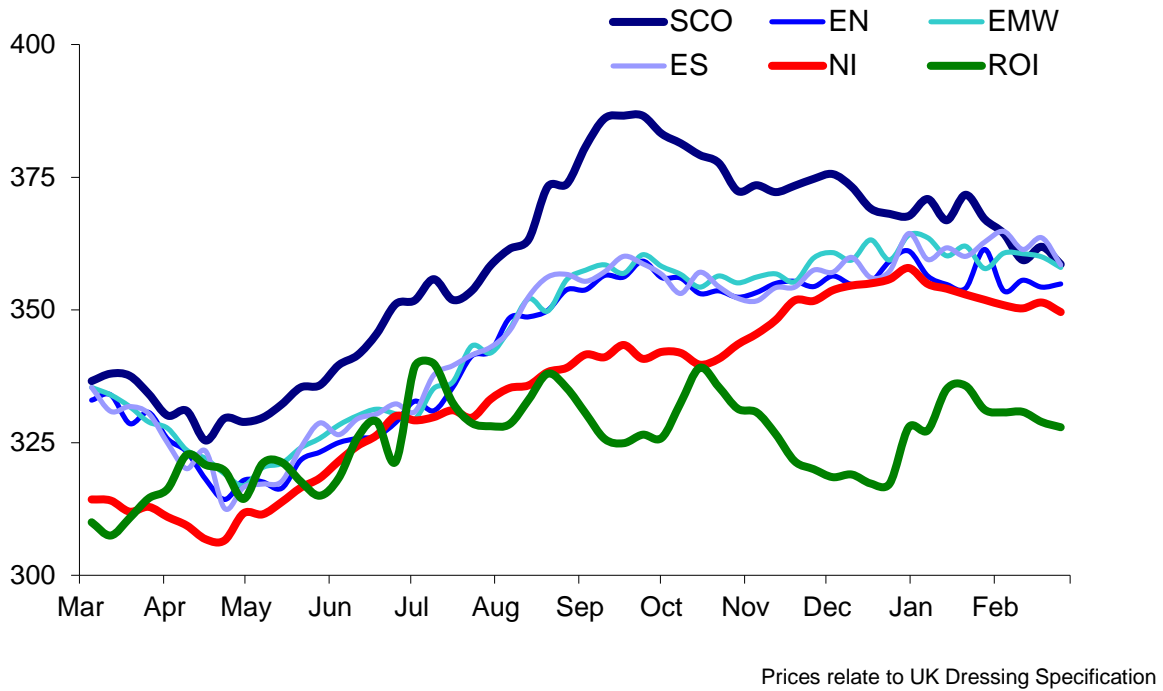
52 Weeks to 25 February 2017



Prices relate to UK Dressing Specification

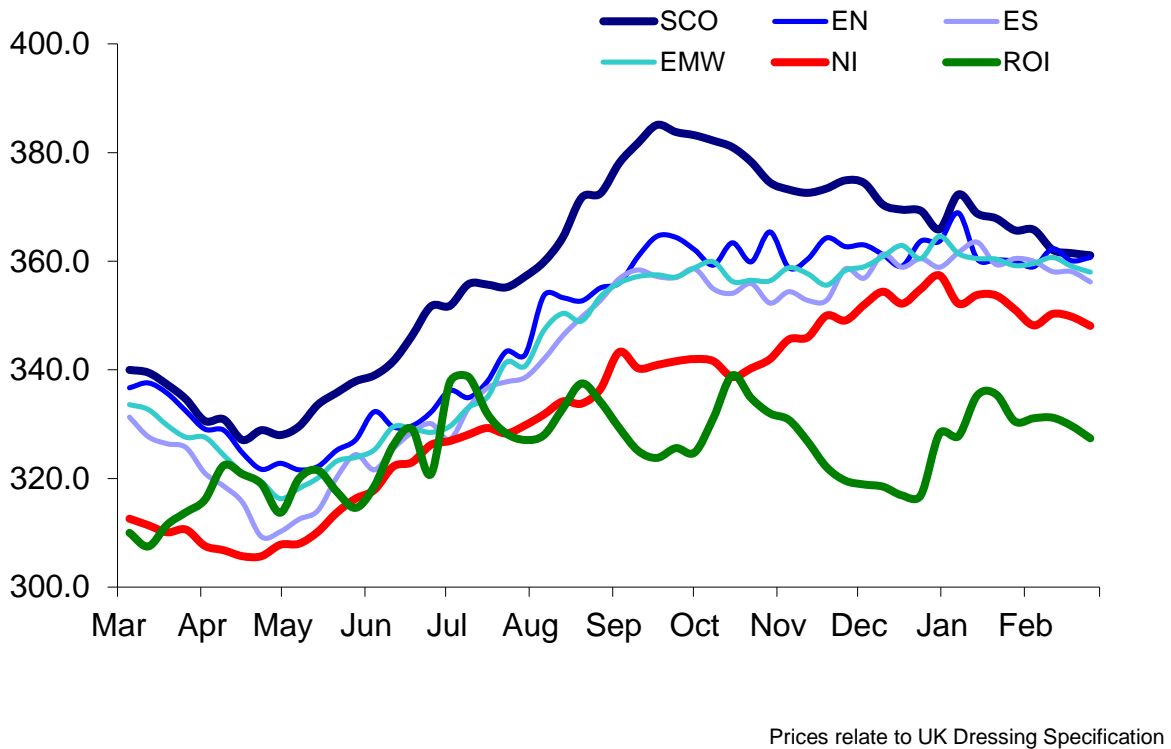
British Isles R3 Heifer Price

52 Weeks to 25 February 2017



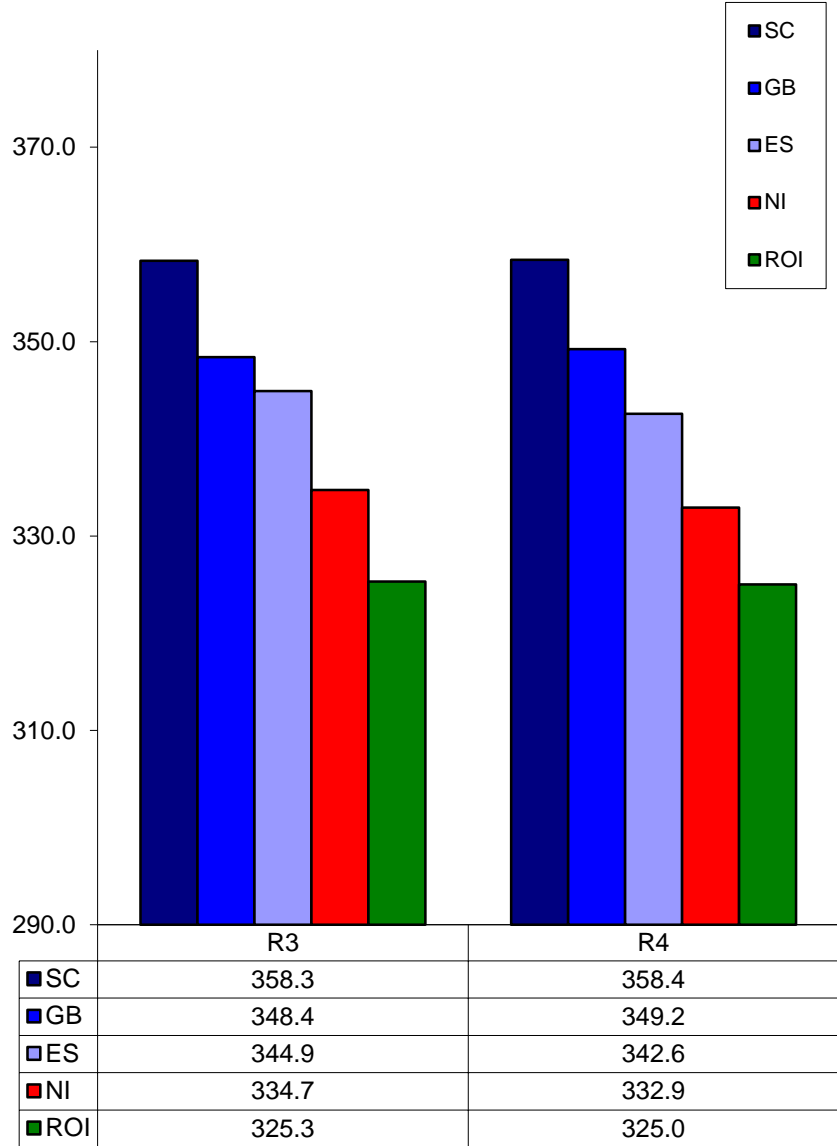
British Isles R4 Heifer Price

52 Weeks to 25 February 2017



British Isles Average R3 and R4 Heifer price

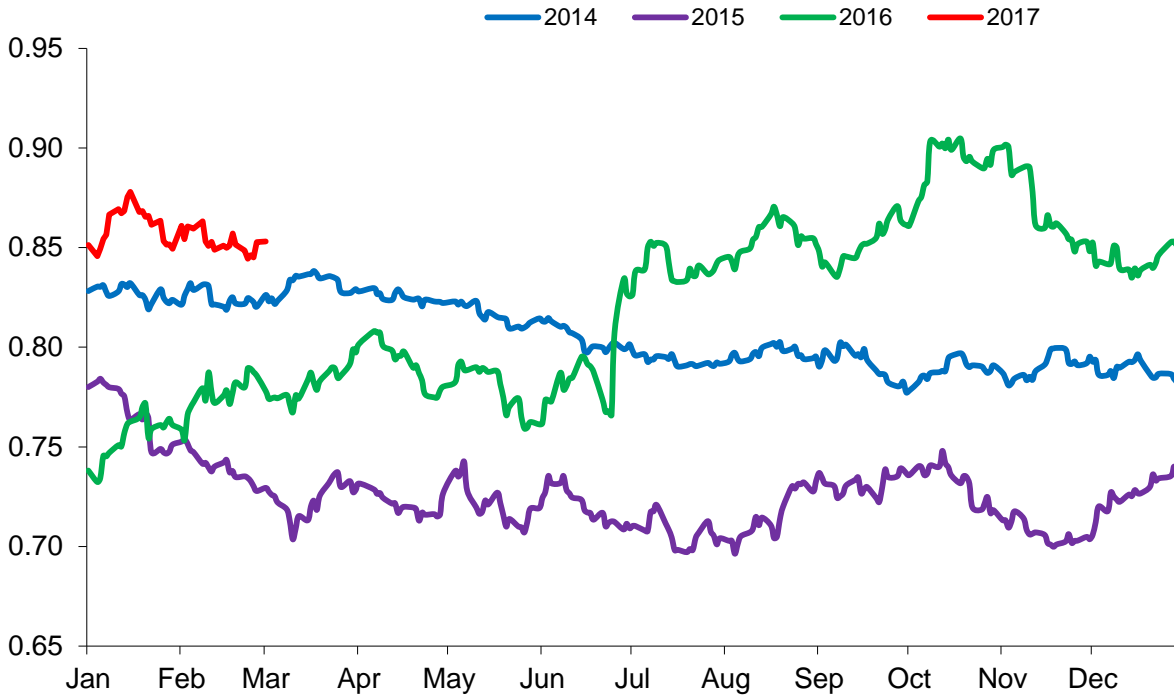
52 Weeks to 25 February 2017



Prices relate to UK Dressing Specification

Exchange Rate £ / Euro

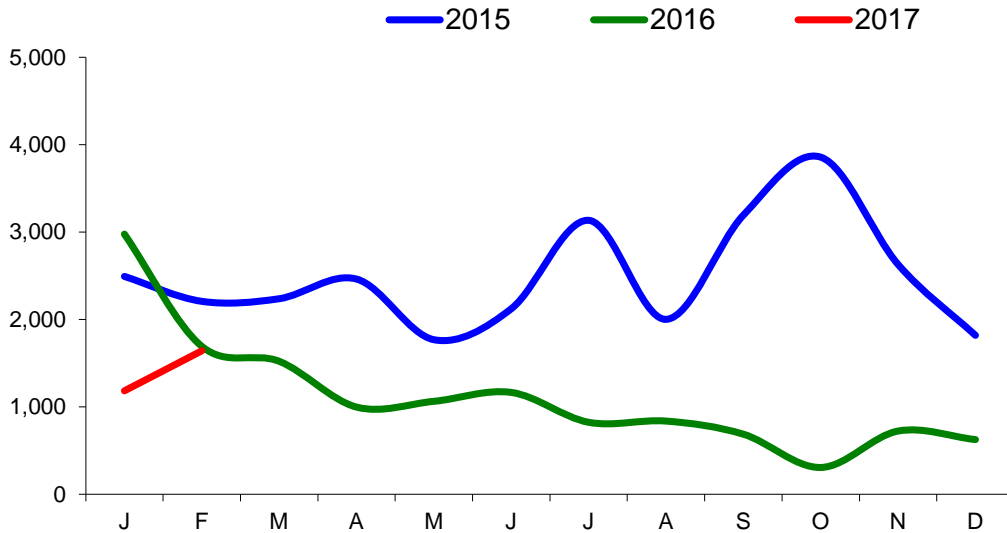
01 January 2013 – 28 February 2017



Imports

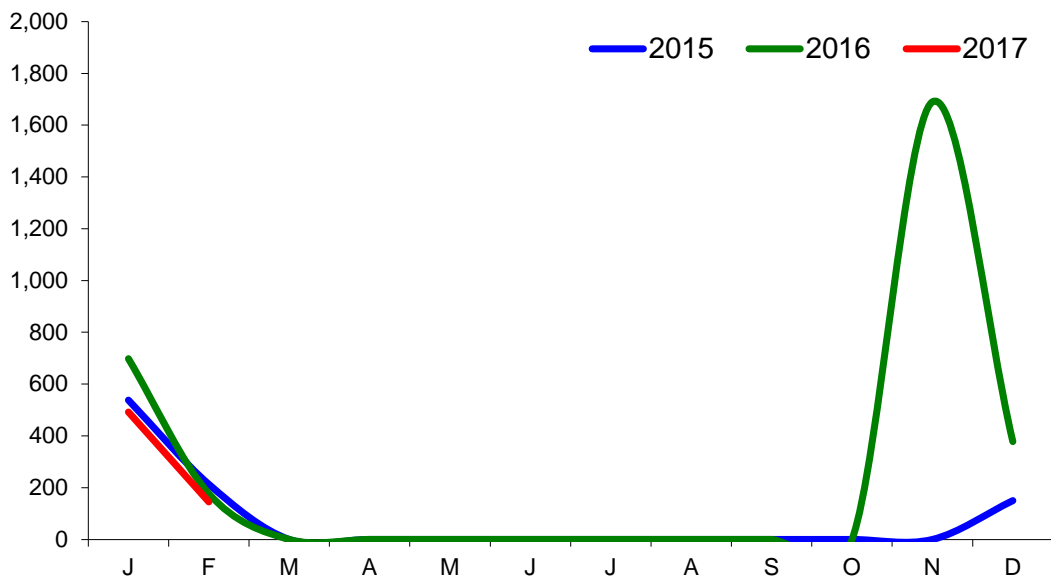
Monthly Live Imports of Cattle into NI for Direct Slaughter

From ROI and GB Combined



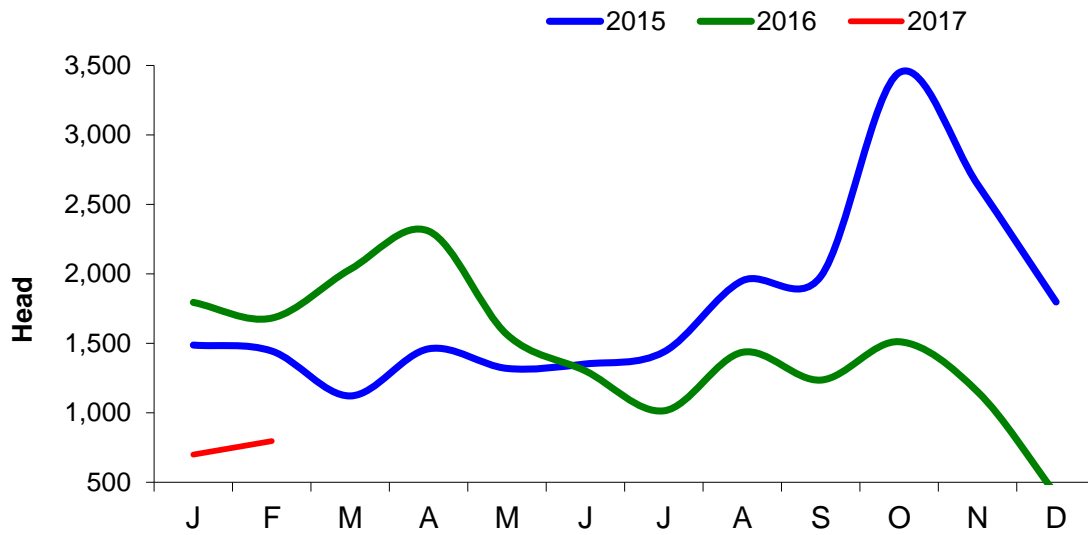
Monthly Live Imports of Sheep into NI for Direct Slaughter

From ROI and GB Combined



Exports

Monthly Live Exports of Cattle from NI into ROI and GB



Monthly Live Exports of Sheep from NI into ROI and GB

