

LMC

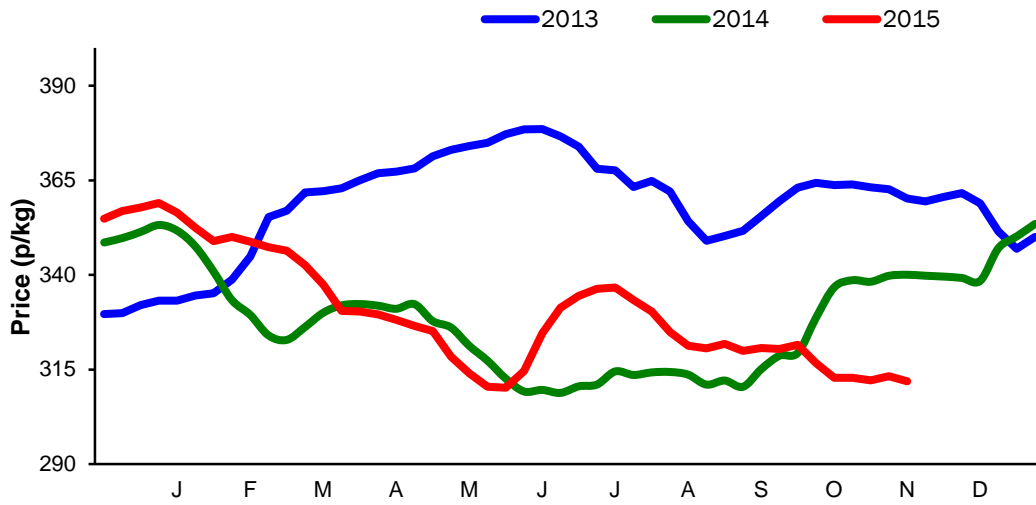
**Monthly Economic Review
October 2015**

Contents

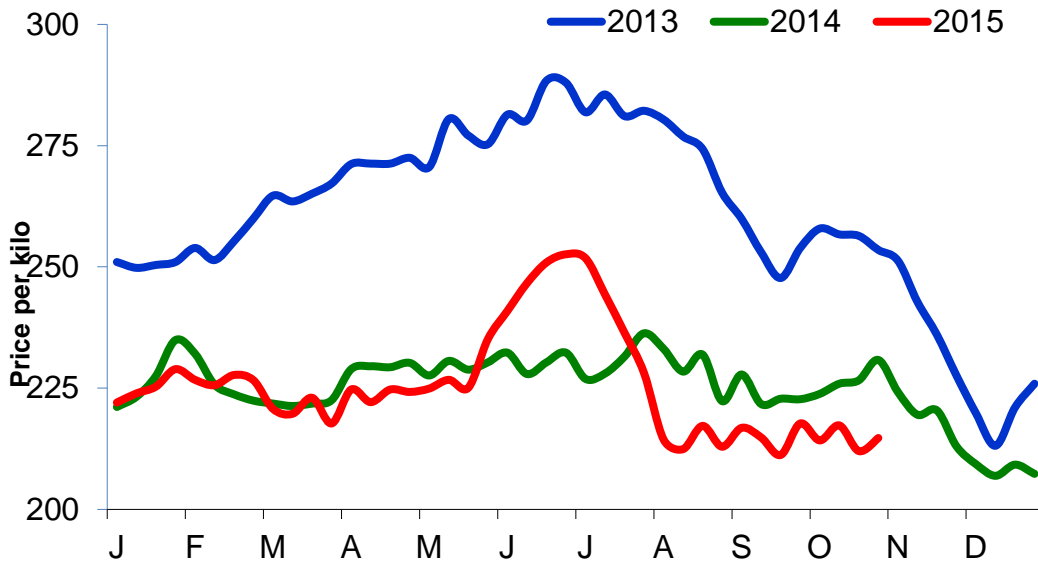
Contents	3
Cattle Prices.....	4
Average NI Clean Cattle Price.....	4
Average NI Cow Price	4
Cattle Slaughtering.....	5
NI Clean Cattle Slaughtering – Cumulative	5
NI Weekly Clean Cattle Slaughtering	5
NI Weekly Cow Slaughtering.....	5
Sheep Prices.....	6
Average NI Lamb / Hogget Price	6
Sheep Slaughtering.....	7
Cumulative Lamb & Hogget Slaughtering.....	7
Total Weekly Lamb & Hogget Slaughtering.....	7
Total Weekly Ewe and Ram Slaughtering	7
Total Carcase Weight Produced for the Food Chain.....	8
Change in Throughput / Production	9
Supply and Price.....	10
NI Lamb/Hogget Kill vs. Average Lamb / Hogget Price	10
NI Clean Cattle Kill vs. Average Clean Cattle Price.....	10
British Isles Price Comparisons	11
UK Average Cow Prices	11
Weekly UK Cow Prices	11
British Isles R3 Steer Price	12
British Isles R4 Steer Price	12
British Isles Average R3 and R4 Steer price	13
British Isles R3 Heifer Price	14
British Isles R4 Heifer Price	14
British Isles Average R3 and R4 Heifer price	15
Exchange Rate £ / Euro.....	17
Imports.....	18
Monthly Live Imports of Cattle into NI for Direct Slaughter.....	18
Monthly Live Imports of Sheep into NI for Direct Slaughter.....	18
Exports.....	19
Monthly Live Exports of Cattle from NI into Rol and GB.....	19
Monthly live Exports of Sheep from NI into Rol and GB.....	19

Cattle Prices

Average NI Clean Cattle Price

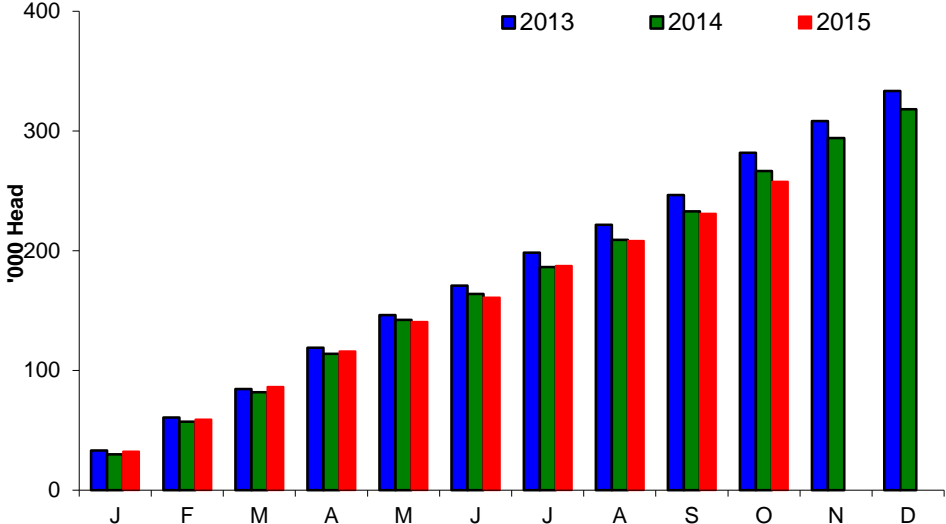


Average NI Cow Price

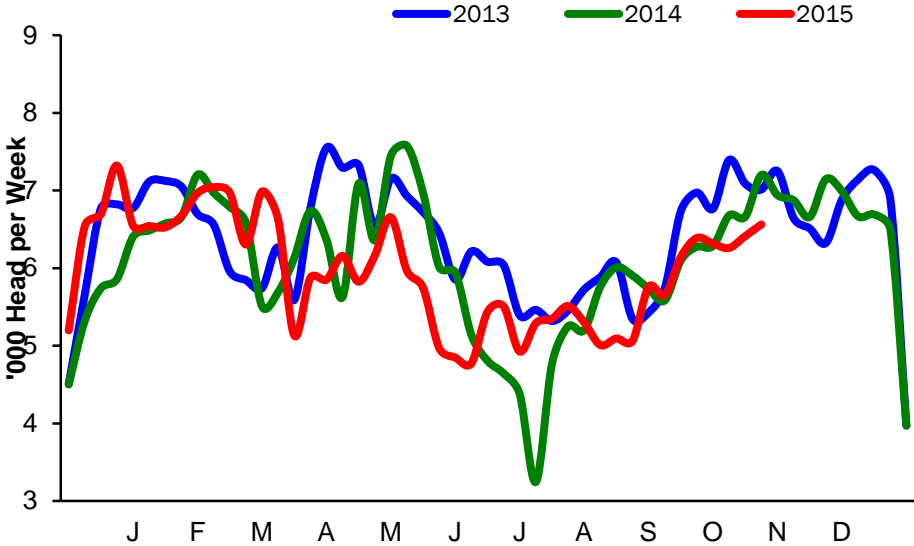


Cattle Slaughtering

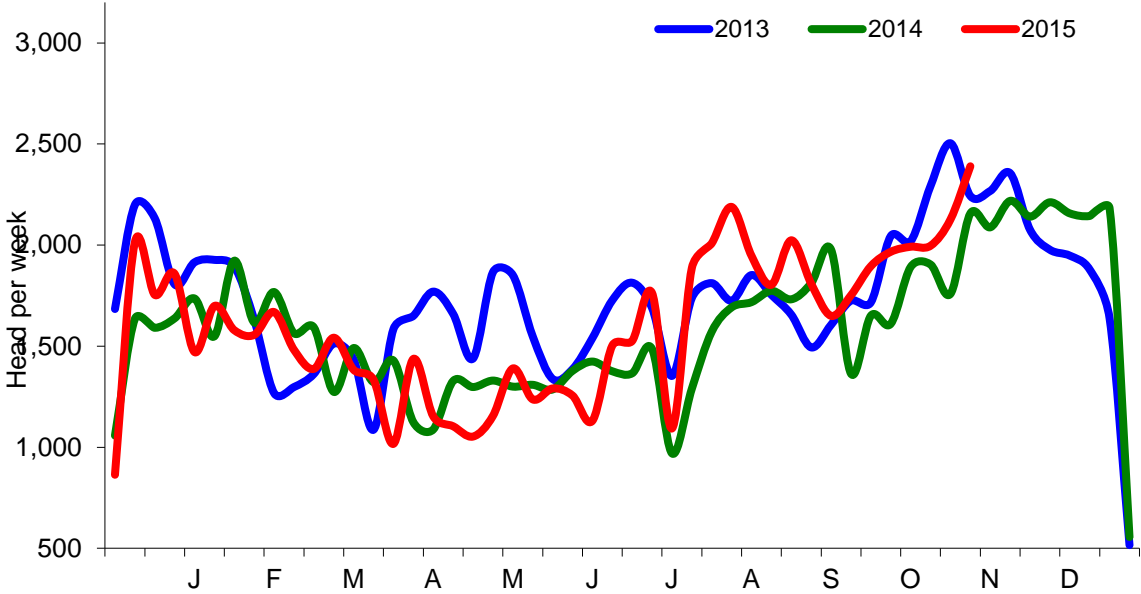
NI Clean Cattle Slaughtering – Cumulative



NI Weekly Clean Cattle Slaughtering

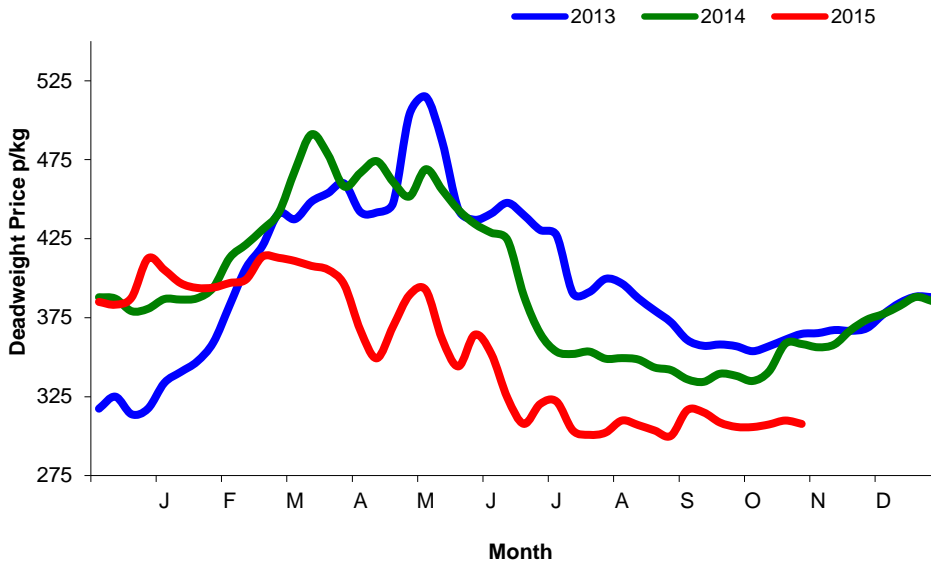


NI Weekly Cow Slaughtering



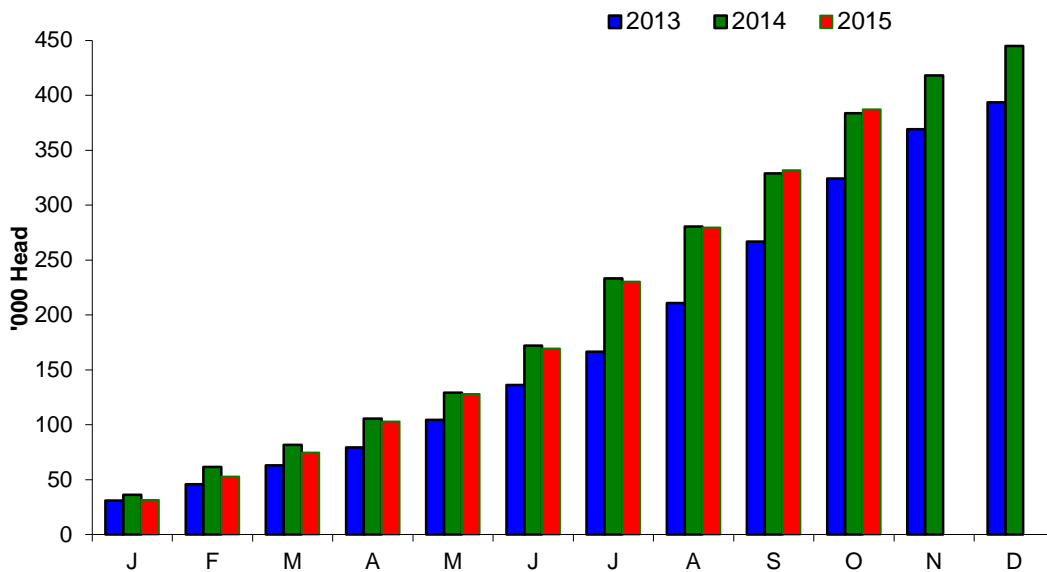
Sheep Prices

Average Deadweight NI Hogget / Lamb Price

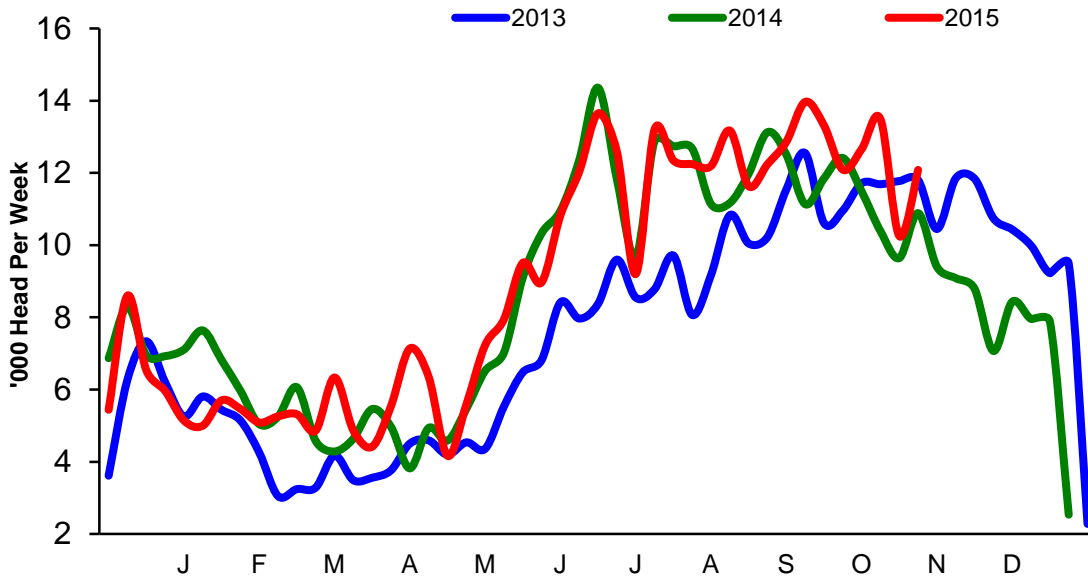


Sheep Slaughterings

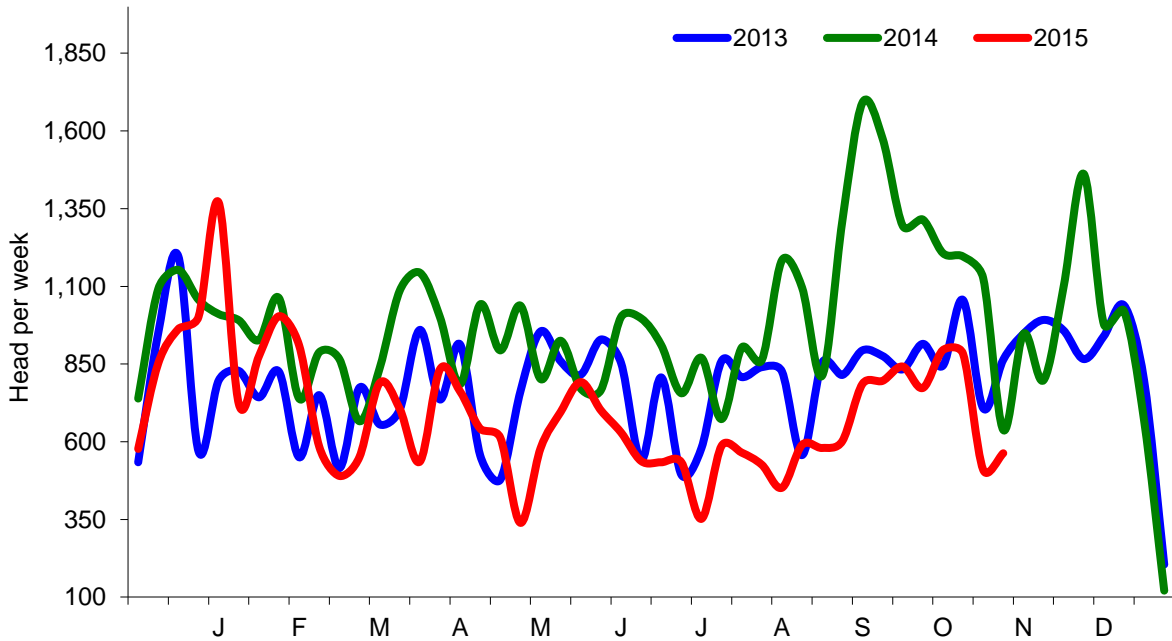
Cumulative Lamb & Hogget Slaughterings



Total Weekly Lamb & Hogget Slaughtering



Total Weekly Ewe and Ram Slaughtering



Market Information October 2015
Page 9

NI CATTLE AND SHEEP SLAUGHTERINGS FOR THE FOODCHAIN						
	October			Year to Date		
	(5 weeks ended 31/10/15)			(44 weeks ended 31/10/15)		
	Oct-14	Oct-15	% Change	2014	2015	Change
CATTLE						
Steers	19,705	18,726	-5%	126,027	138,502	+10%
Heifers	11,915	10,865	-9%	100,453	97,814	-3%
Young Bulls / Calves	2,149	2,349	+9%	40,233	26,446	-34%
Total Prime Cattle	33,769	31,940	-5%	266,713	262,762	-1%
Calves	919	644	-30%	8,161	5,348	+0%
Cows	9,323	10,473	+12%	67,156	70,142	+4%
Mature Bulls	529	535	+1%	5,940	3,214	-46%
Total Cattle	44,540	43,592	-2%	347,970	341,466	-2%
SHEEP						
Lambs & Hoggets	54,819	60,574	+10%	383,786	392,486	+2%
Ewes & Rams	5,483	3,624	-34%	43,703	30,427	-30%
Total Sheep	60,302	64,198	+6%	427,489	422,913	-1%

The above figures are provisional; any amendments will be incorporated in the cumulative data (source DARD).

NI BEEF AND SHEEPMEAT PRODUCTION - FOODCHAIN						
	October			Year to Date		
	(5 weeks ended 31/10/15)			(44 weeks ended 31/10/15)		
	Oct-14	Oct-15	% Change	2013	2014	Change
BEEF						
Steers	6,776	6,672	-2%	43,569	48,811	+12%
Heifers	3,733	3,520	-6%	31,330	31,204	-0%
Young Bulls	710	791	+11%	13,304	8,916	-33%
Total Prime Beef	11,219	10,983	-2%	88,168	88,931	+1%
Calves	185	137	-26%	1,756	1,120	-36%
Cows	2,812	3,201	+14%	20,547	21,457	+4%
Mature Bulls	234	252	+8%	2,382	1,446	-39%
Total Beef	14,450	14,573	+1%	112,853	112,955	+0%
SHEEPMEAT						
Lambs & Hoggets	1,204	1,306	+8%	8,308	8,496	+2%
Ewes & Rams	148	100	-32%	1,231	854	-31%
Total Sheepmeat	1,351	1,406	+4%	9,539	9,350	-2%

The above figures are provisional; any amendments will be incorporated in the cumulative data (source DARD).

Market Information October 2015
Page 10

Total Carcase Weight Produced for the Food Chain
Year-to-Date (tonnes – t.)

Month	Prime Cattle		Cows & Bulls		Lambs/Hoggets		Ewes & Rams	
	2014	2015	2014	2015	2014	2015	2014	2015
January	9,784	10,829	2,518	2,569	797	712	143	127
February	9,000	8,936	2,346	2,086	561	476	104	92
March	8,093	9,207	2,203	1,882	446	482	95	66
April	10,615	9,939	2,189	1,917	520	629	150	97
May	9,475	8,318	1,841	1,579	505	537	108	66
June	7,255	6,860	1,897	1,734	898	891	105	81
July	7,349	9,033	2,309	2,779	1,337	1,302	118	77
August	7,555	7,085	2,320	2,578	999	1,041	111	62
September	7,823	7,778	2,261	2,326	1,041	1,121	151	86
October	11,219	10,983	3,046	3,453	1,204	1,306	148	100
November								
December								
Total	88,168	88,969	22,930	22,904	8,308	8,496	1,231	854
Change (t.)	801		-26		188		-377	
% Change	0.91%		-0.11%		2.26%		-30.64%	

**excludes calves*

Change in Throughput / Production
Last 4 weeks 2014/2015

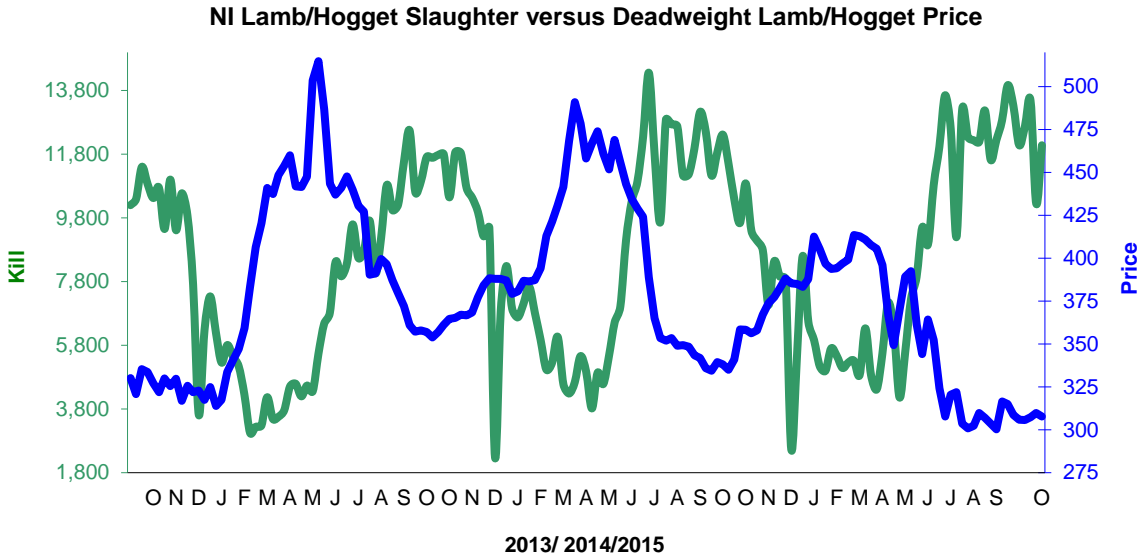
Change in Throughput / Production 2014/2015

October

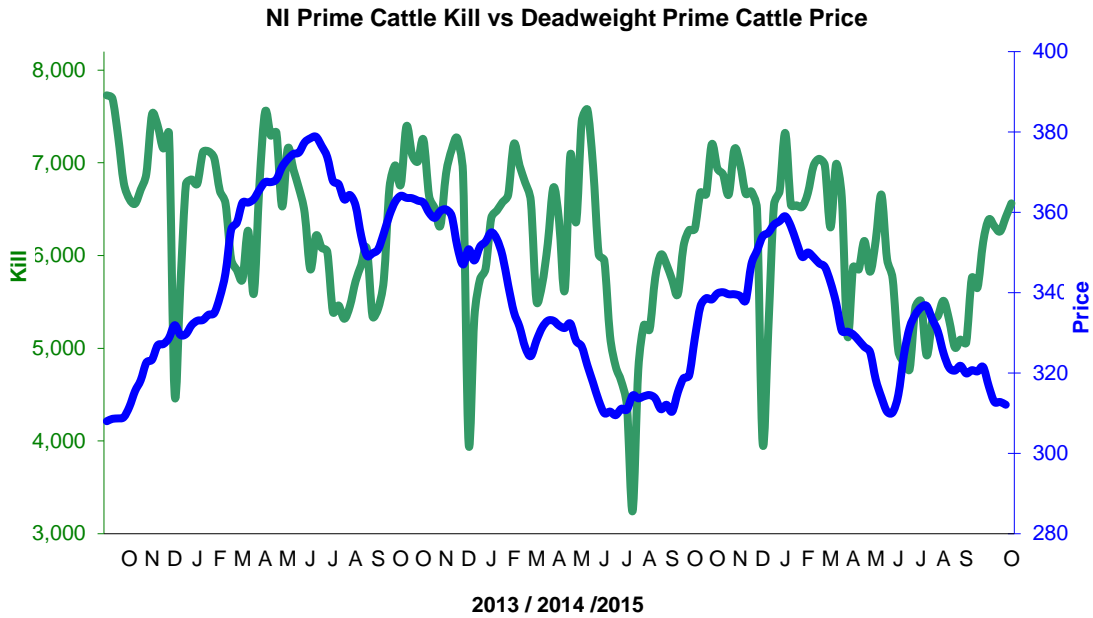
2014/2015	Number	Tonnage	ACW Kg
Prime	-5.4%	-2.1%	11.67
Cows	12.3%	13.8%	4.10
Total	-2.1%	0.9%	10.01
Lamb	10.5%	8.5%	-0.40
Ewes and Rams	-33.9%	-32.2%	0.57
Total Sheep	6.5%	4.0%	-0.51

Supply and Price

NI Lamb/Hogget Kill vs. Average Lamb / Hogget Price



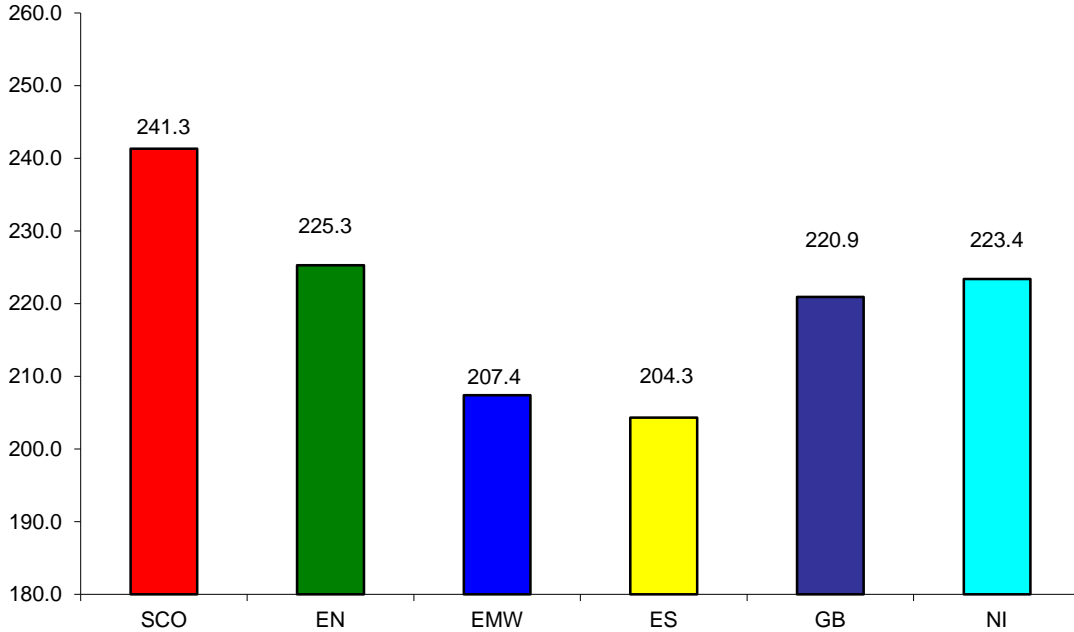
NI Clean Cattle Kill vs. Average Clean Cattle Price



Green	Supply (Kill)
Blue	Price

BRITISH ISLES COMPARISONS

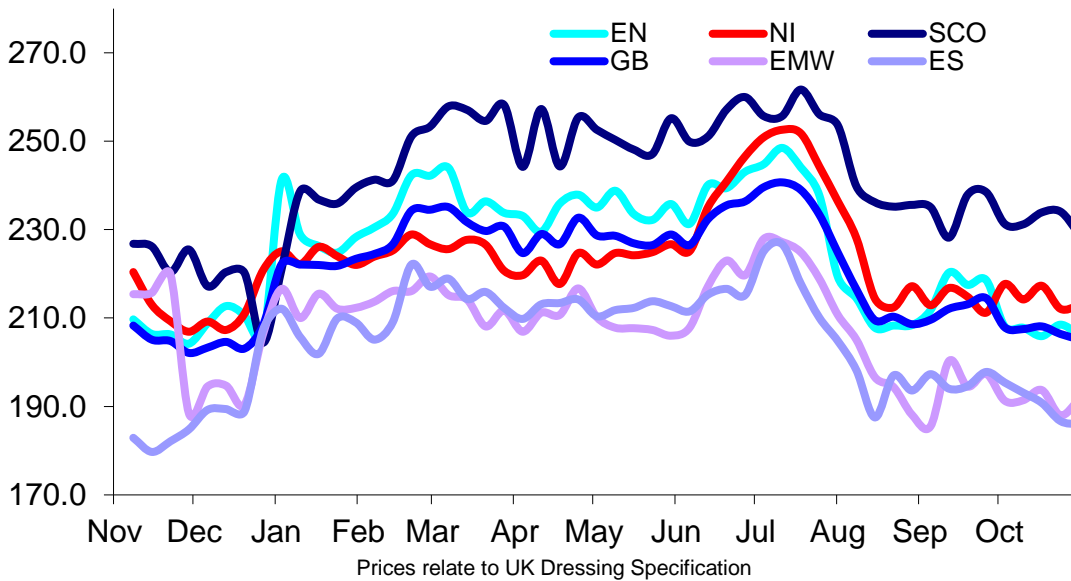
UK Average Cow Prices
52 Weeks to 31 October 2015



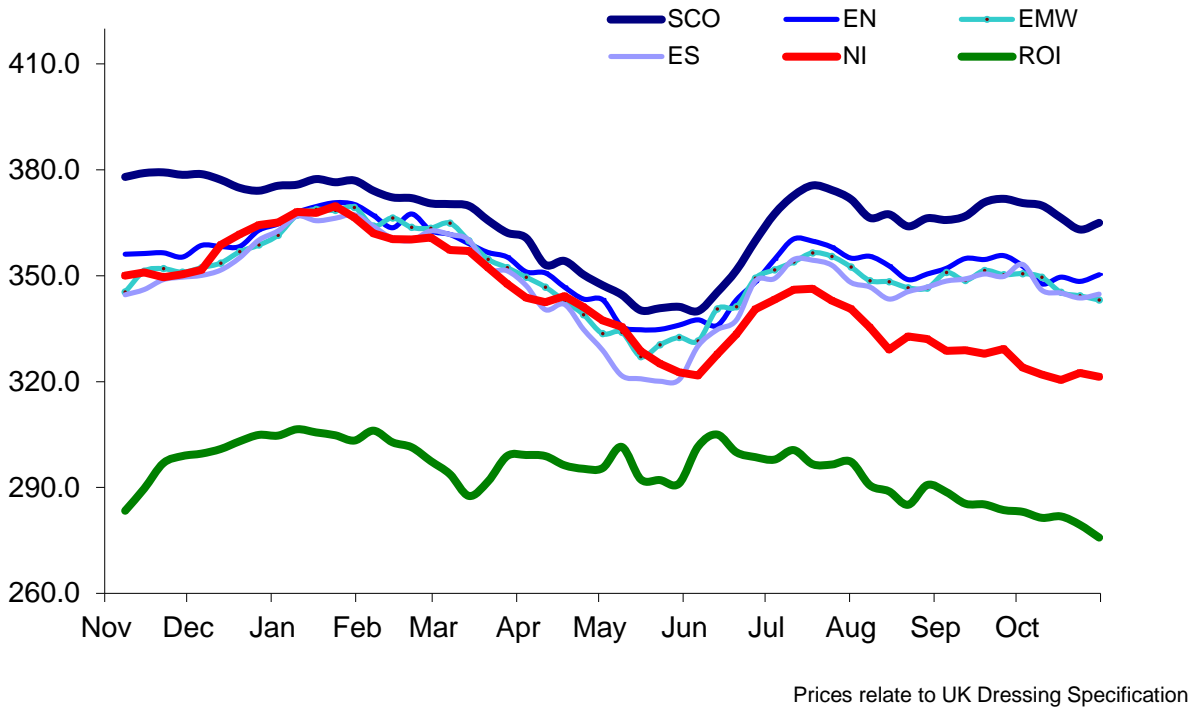
SCO	Scotland
EN	England North
EMW	England Midlands and Wales
ES	England South
NI	Northern Ireland
GB	Great Britain

Prices relate to UK Dressing Specification

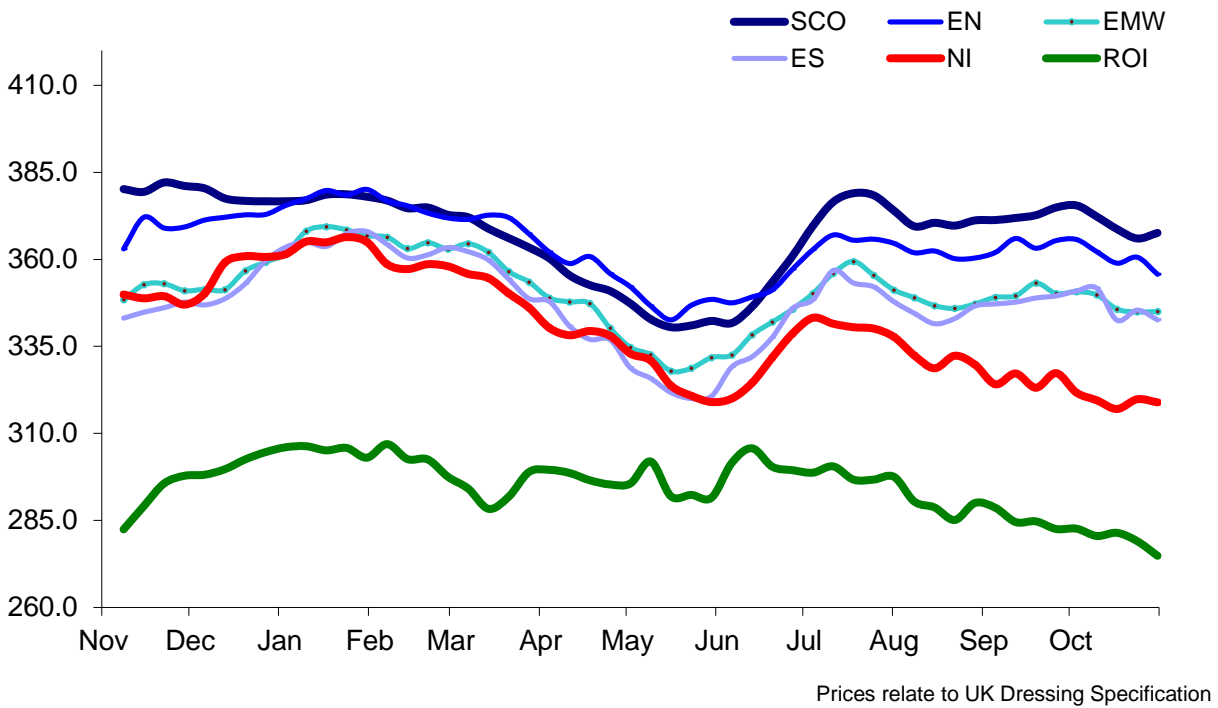
Weekly UK Cow Prices
52 Weeks to 31 October 2015



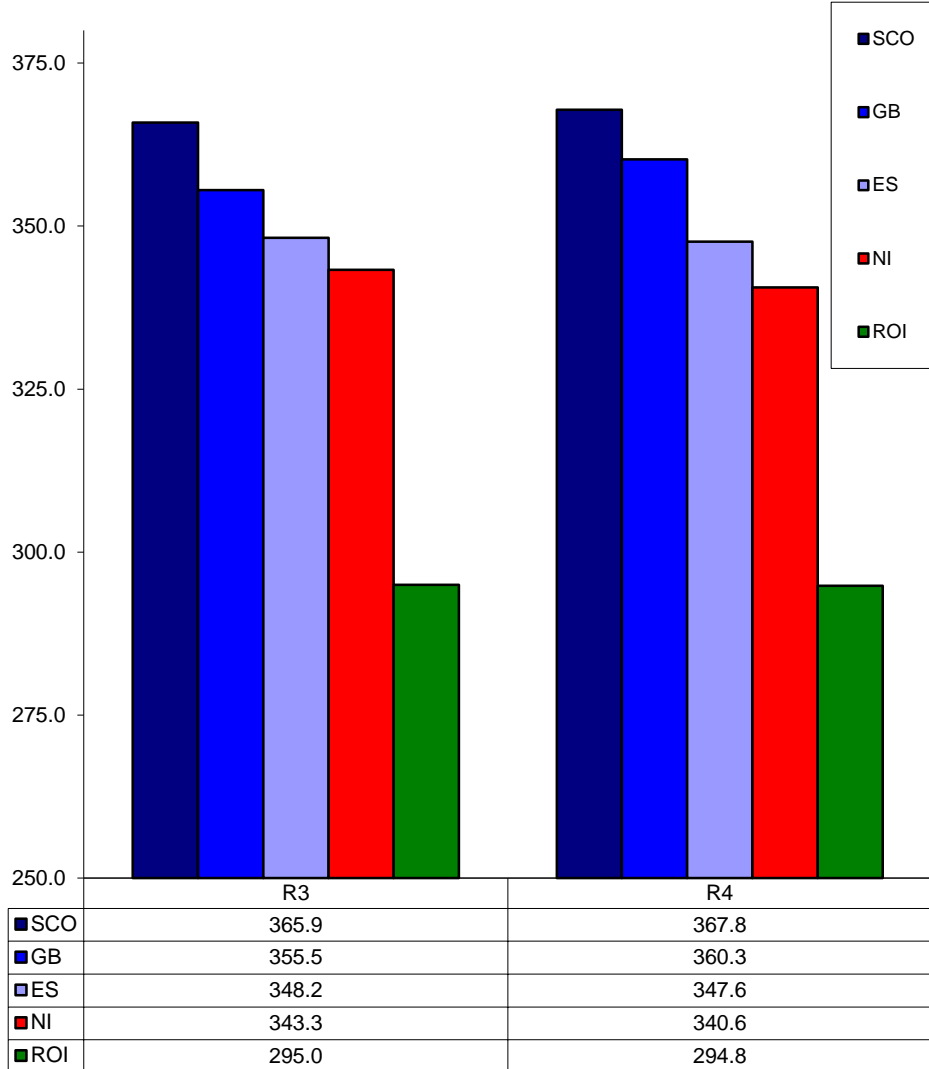
British Isles R3 Steer Price
52 Weeks to 31 October 2015



British Isles R4 Steer Price
52 Weeks to 31 October 2015

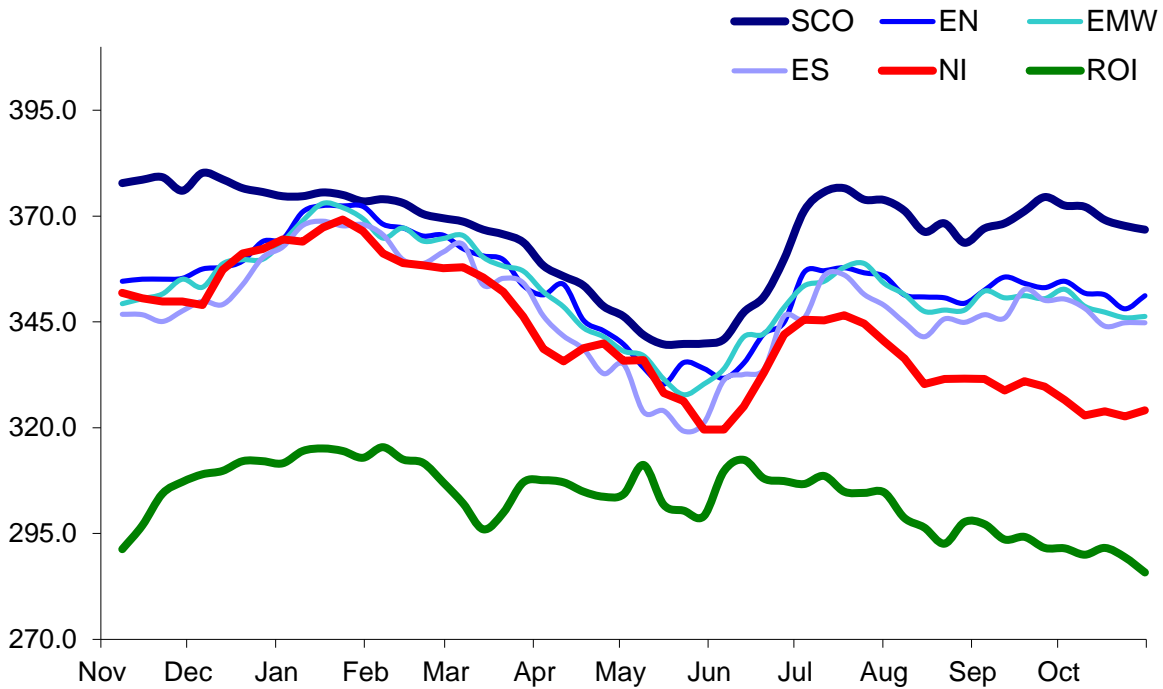


British Isles Average R3 and R4 Steer price
52 Weeks to 31 October 2015



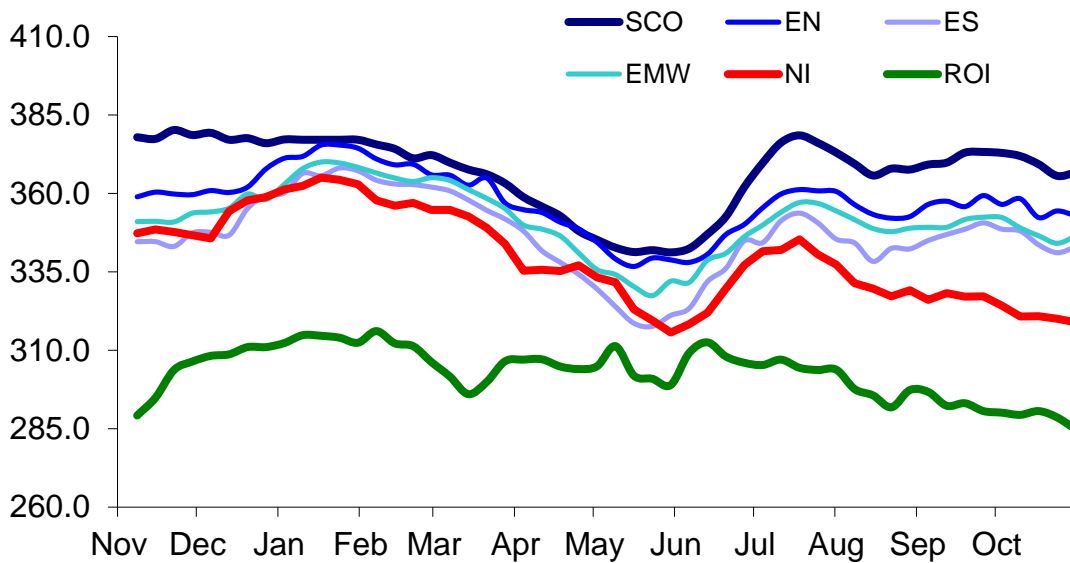
Prices relate to UK Dressing Specification

British Isles R3 Heifer Price
52 Weeks to 31 October 2015



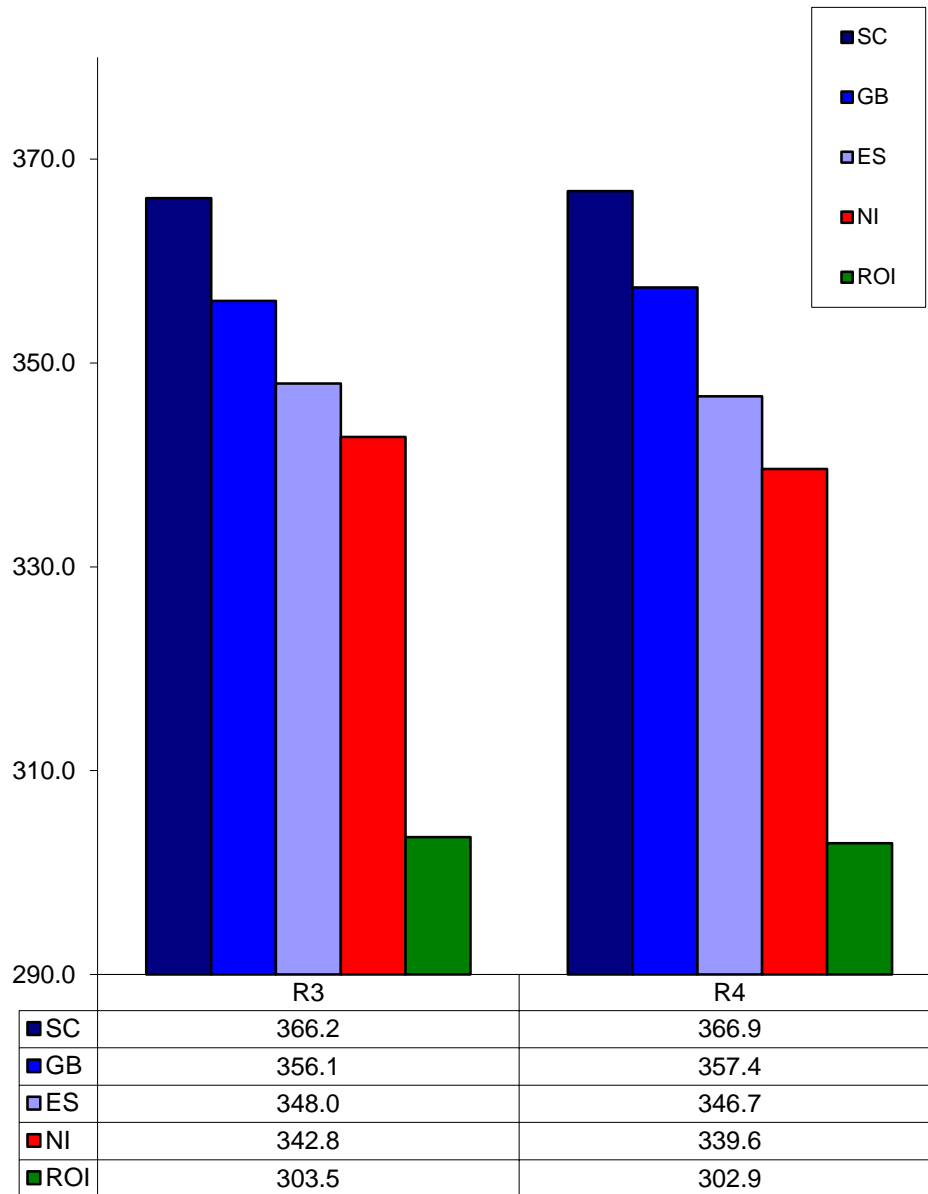
Prices relate to UK Dressing Specification

British Isles R4 Heifer Price
52 Weeks to 31 October 2015



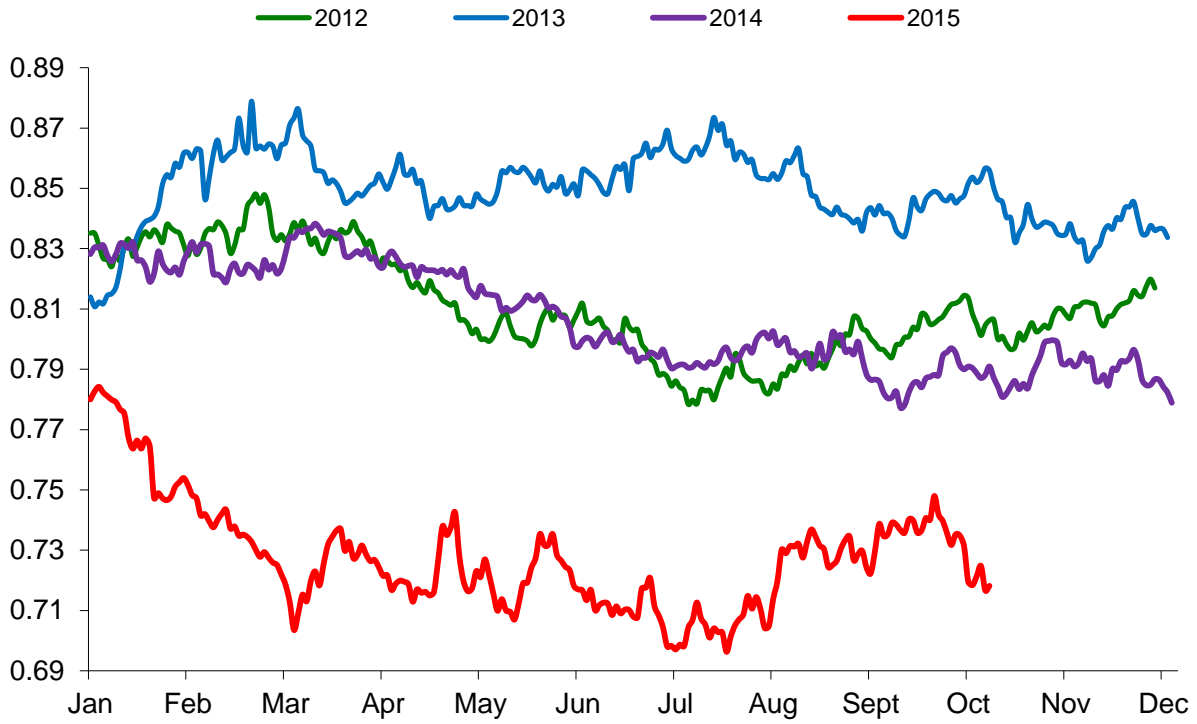
Prices relate to UK Dressing Specification

British Isles Average R3 and R4 Heifer price
52 Weeks to 31 October 2015



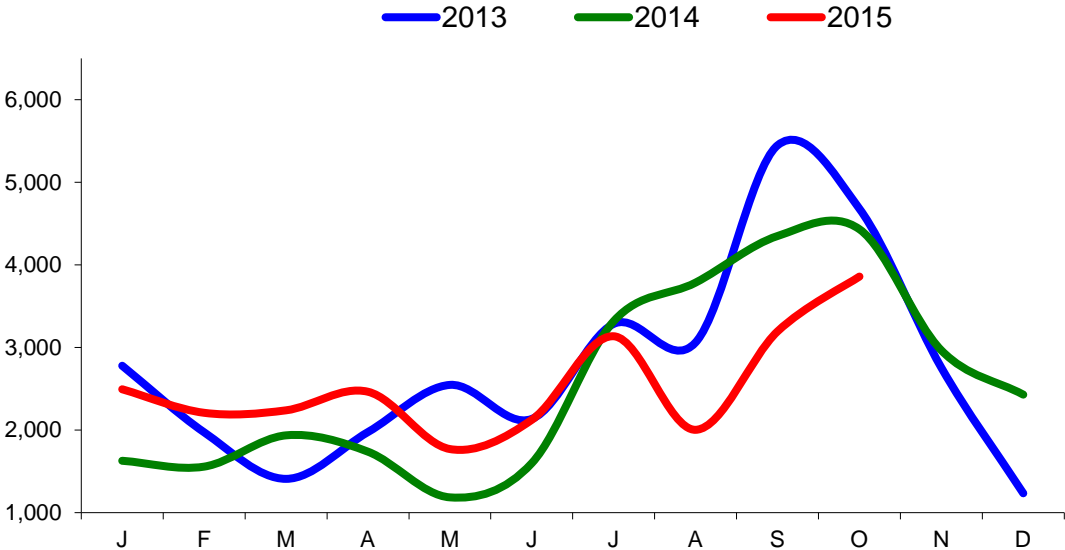
Prices relate to UK Dressing Specification

Exchange Rate £ / Euro
01 January 2012 – 31 October 2015

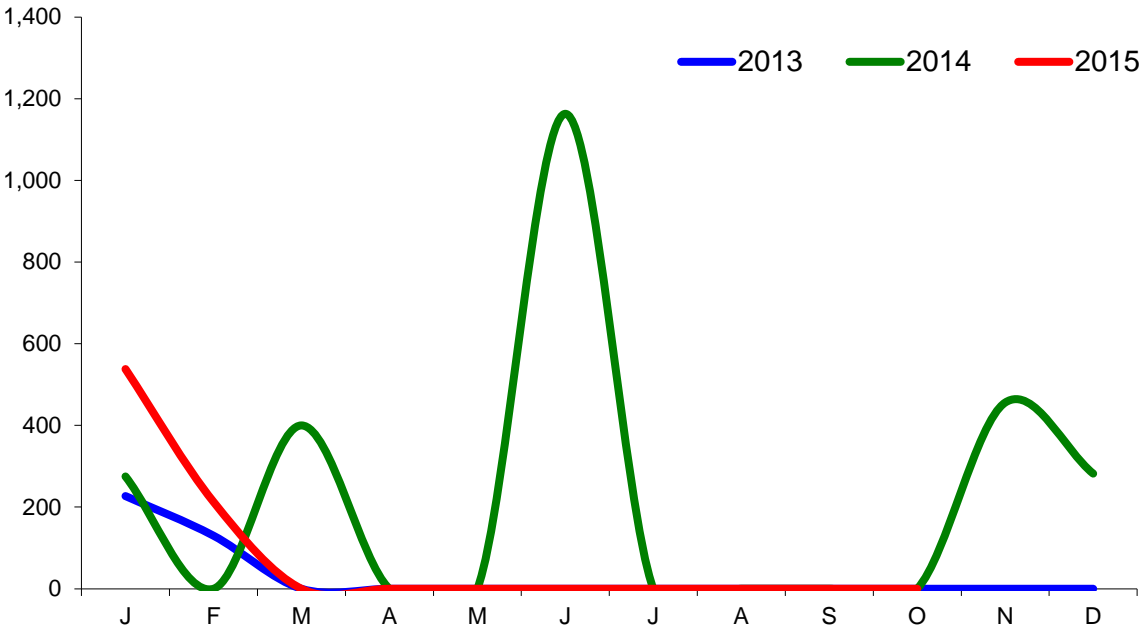


Imports

**Monthly Live Imports of Cattle into NI for Direct Slaughter
 From ROI and GB Combined**

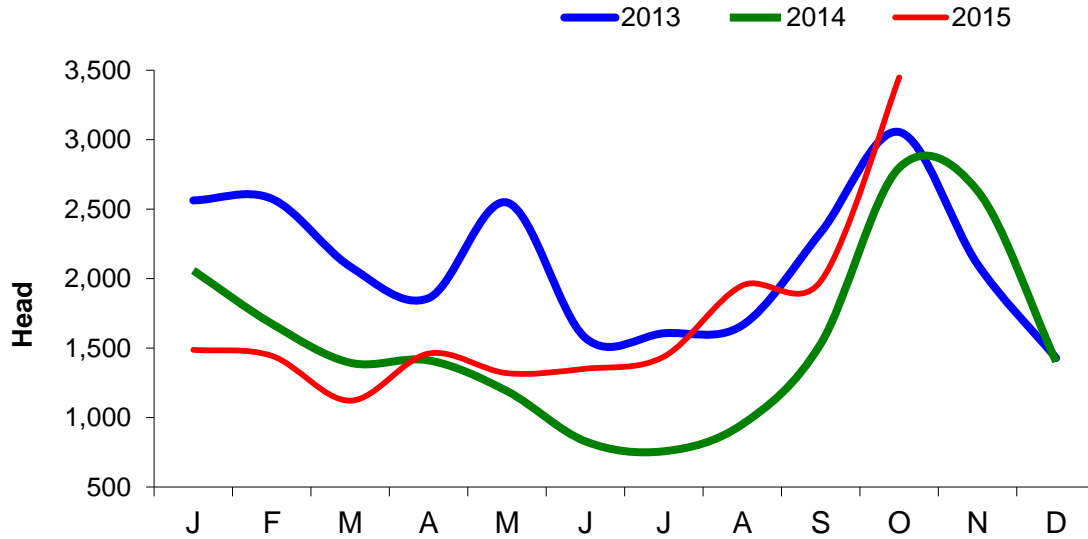


**Monthly Live Imports of Sheep into NI for Direct Slaughter
 From ROI and GB Combined**



Exports

Monthly Live Exports of Cattle from NI into ROI and GB



Monthly Live Exports of Sheep from NI into ROI and GB

