



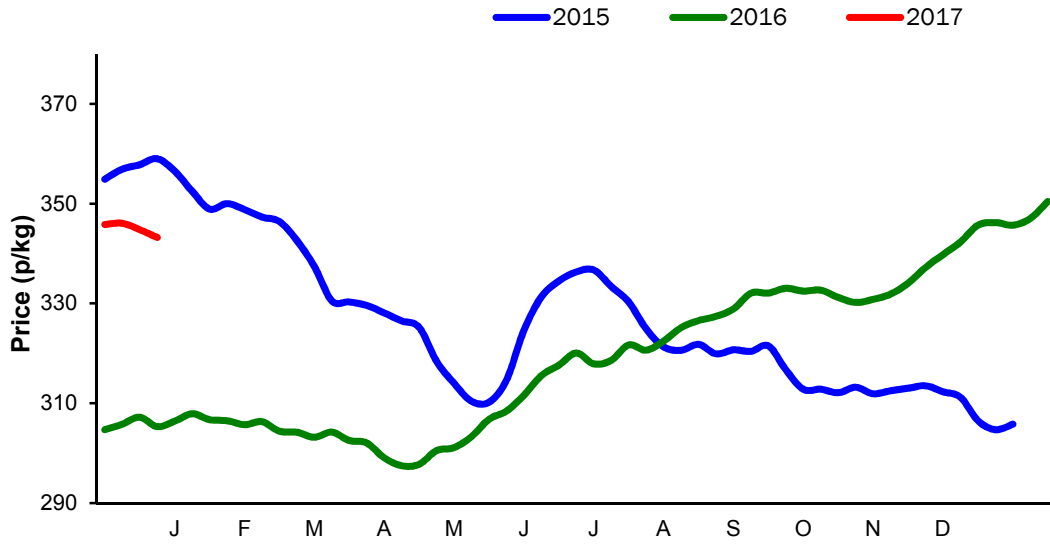
Monthly Economic Review
January 2017

Contents

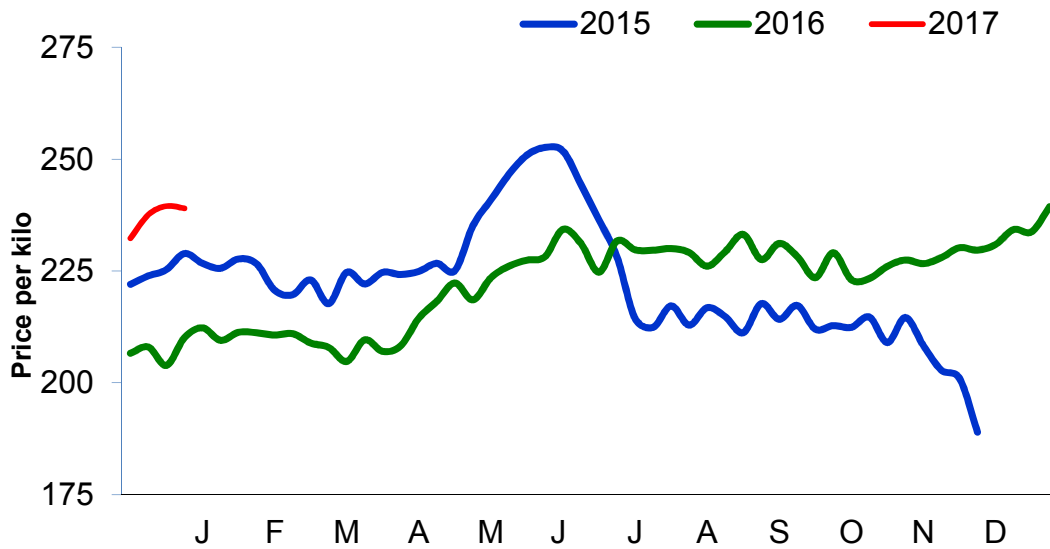
Contents.....	2
Cattle Prices	4
Average NI Clean Cattle Price	4
Average NI Cow Price.....	4
Cattle Slaughtering.....	5
NI Clean Cattle Slaughtering – Cumulative	5
NI Weekly Clean Cattle Slaughtering.....	5
NI Weekly Cow Slaughtering	5
Sheep Prices.....	6
Average NI Lamb / Hogget Price	6
Sheep Slaughtering.....	7
Cumulative Lamb & Hogget Slaughtering	7
Total Weekly Lamb & Hogget Slaughtering	7
Total Weekly Ewe and Ram Slaughtering.....	7
Total Carcase Weight Produced for the Food Chain.....	8
Change in Throughput / Production	9
Supply and Price.....	10
NI Lamb/Hogget Kill vs. Average Lamb / Hogget Price	10
NI Clean Cattle Kill vs. Average Clean Cattle Price.....	10
British Isles Price Comparisons	11
UK Average Cow Prices	11
Weekly UK Cow Prices	11
British Isles R3 Steer Price	12
British Isles R4 Steer Price	12
British Isles Average R3 and R4 Steer price	13
British Isles R3 Heifer Price	14
British Isles R4 Heifer Price	14
British Isles Average R3 and R4 Heifer price.....	15
Exchange Rate £ / Euro	16
Imports.....	17
Monthly Live Imports of Cattle into NI for Direct Slaughter	17
Monthly Live Imports of Sheep into NI for Direct Slaughter	17
Exports	18
Monthly Live Exports of Cattle from NI into RoI and GB	18
Monthly live Exports of Sheep from NI into RoI and GB	18

Cattle Prices

Average NI Clean Cattle Price

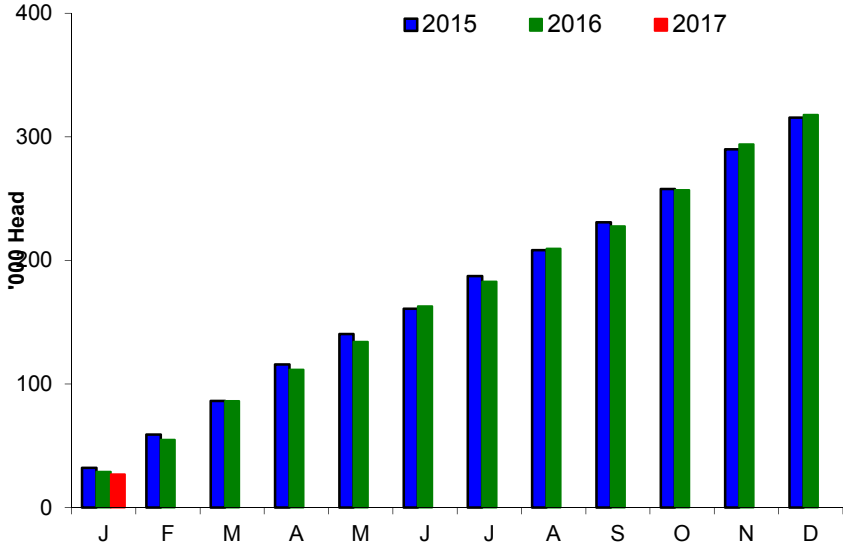


Average NI Cow Price

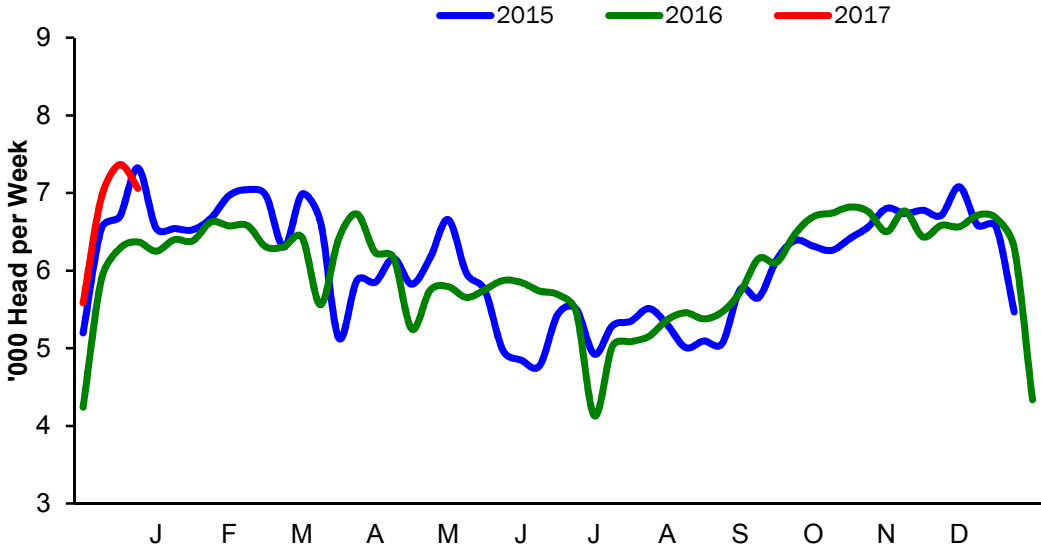


Cattle Slaughtering

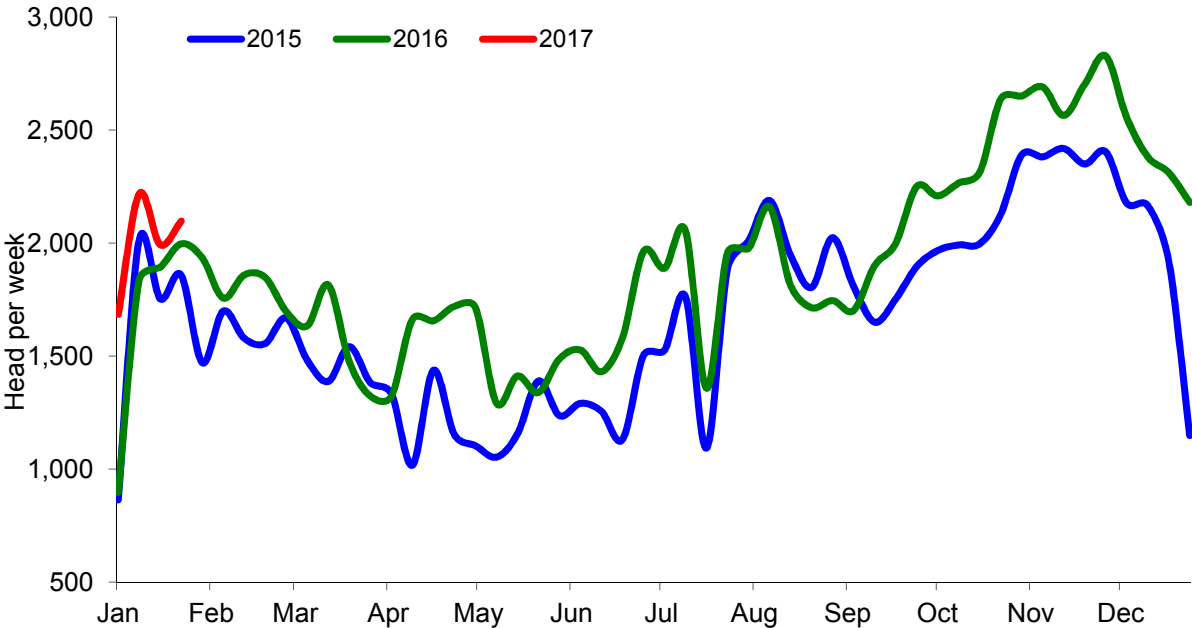
NI Clean Cattle Slaughtering – Cumulative



NI Weekly Clean Cattle Slaughtering

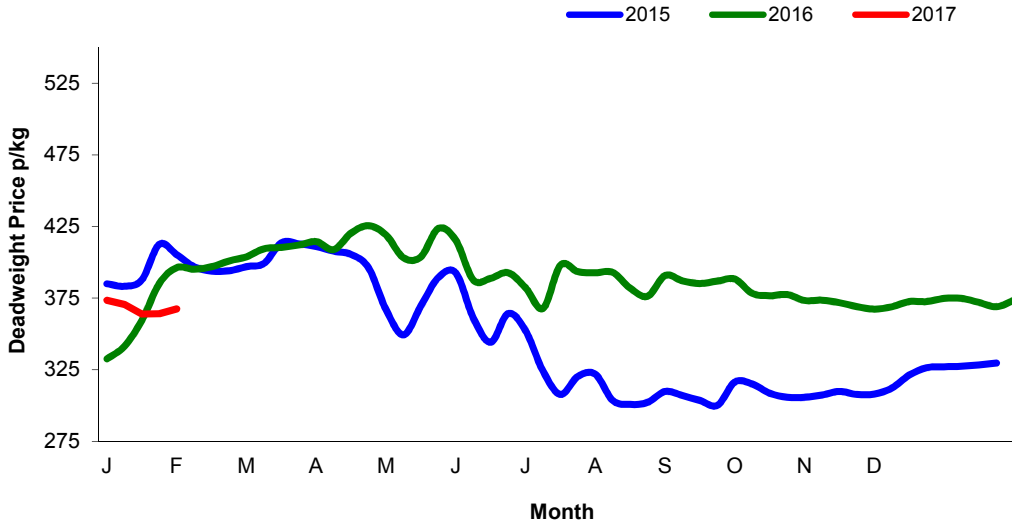


NI Weekly Cow Slaughtering



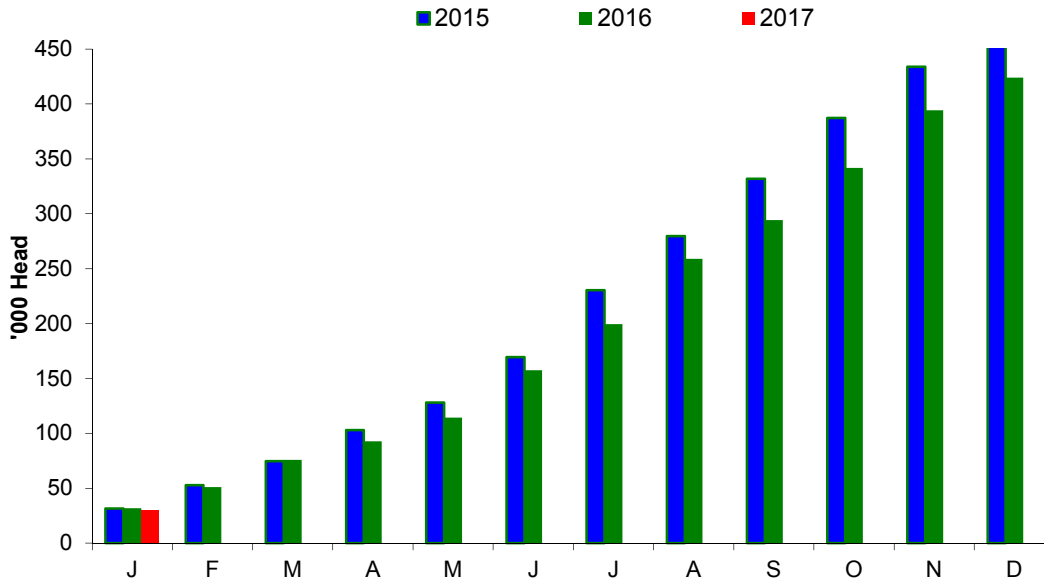
Sheep Prices

Average Deadweight NI Hogget / Lamb Price

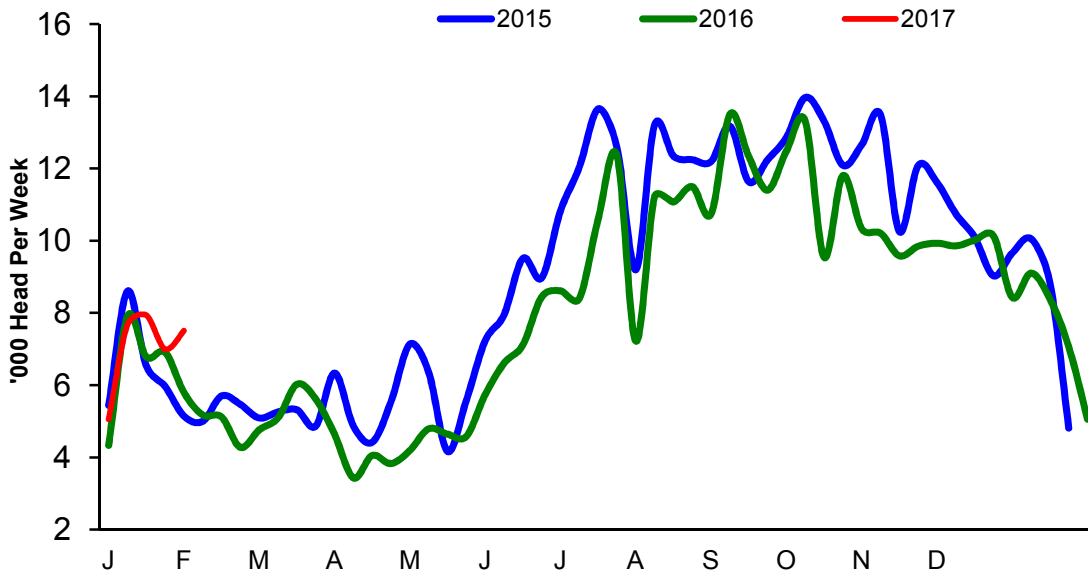


Sheep Slaughterings

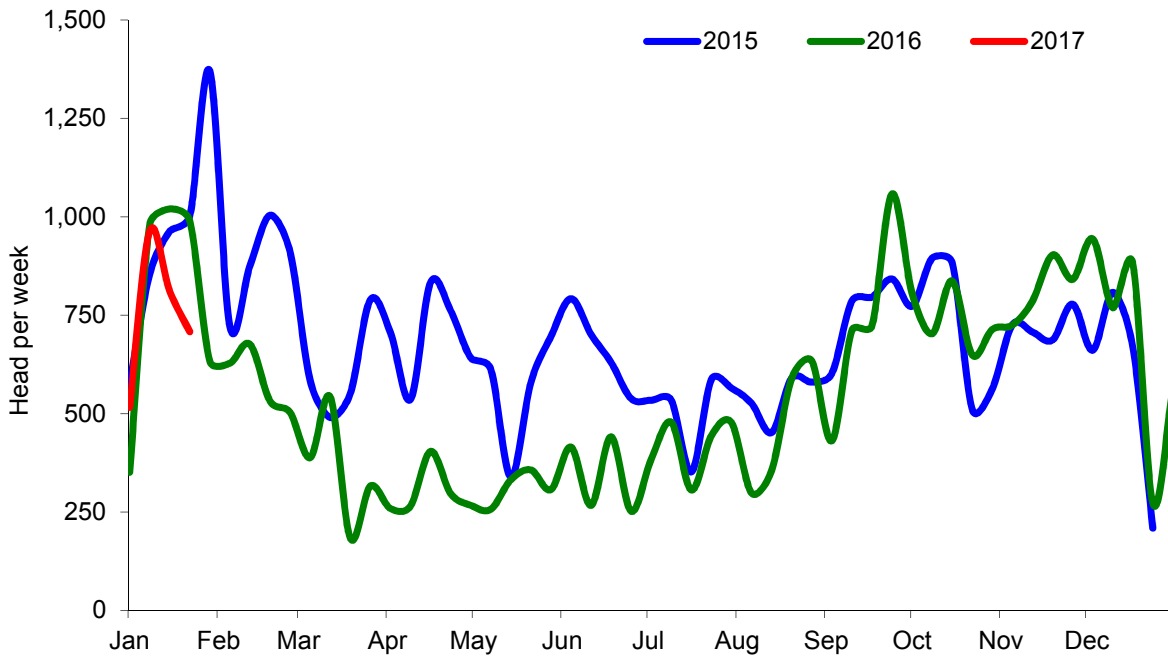
Cumulative Lamb & Hogget Slaughterings



Total Weekly Lamb & Hogget Slaughtering



Total Weekly Ewe and Ram Slaughtering



Market Information January 2017
Page 8

NI CATTLE AND SHEEP SLAUGHTERINGS FOR THE FOODCHAIN						
	January			Year to Date		
	(4 weeks ended 28/01/17)			(43 weeks ended 28/01/17)		
	Jan-16	Jan-17	% Change	2015	2016	Change
CATTLE						
Steers	12,308	13,627	+11%	136,955	134,291	-2%
Heifers	9,551	10,760	+13%	94,472	93,591	-1%
Young Bulls / Calves	2,933	2,564	-13%	26,831	30,826	+15%
Total Prime Cattle	24,792	26,951	+9%	258,258	258,708	+0%
Calves	535	614	+15%	5,509	6,337	+0%
Cows	7,662	7,993	+4%	75,410	84,646	+12%
Mature Bulls	266	300	+13%	3,402	3,600	+6%
Total Cattle	33,255	35,858	+8%	342,579	353,291	+3%
SHEEP						
Lambs & Hoggets	27,396	30,113	+10%	424,331	378,141	-11%
Ewes & Rams	3,623	2,998	-17%	28,956	24,141	-17%
Total Sheep	31,019	33,111	+7%	453,287	402,282	-11%
The above figures are provisional; any amendments will be incorporated in the cumulative data (source DAERA).						

NI BEEF AND SHEEPMEAT PRODUCTION - FOODCHAIN						
	January			Year to Date		
	(4 weeks ended 28/01/17)			(43 weeks ended 28/01/17)		
	Jan-16	Jan-17	% Change	2015	2016	Change
BEEF						
Steers	4,413	4,780	+8%	43,504	47,249	+9%
Heifers	3,085	3,408	+10%	26,660	29,588	+11%
Young Bulls	973	814	-16%	8,012	10,141	+27%
Total Prime Beef	8,471	9,001	+6%	78,176	86,978	+11%
Calves	109	126	+16%	1,029	1,323	+29%
Cows	2,364	2,391	+1%	20,469	25,210	+23%
Mature Bulls	125	136	+9%	1,416	1,659	+17%
Total Beef	11,069	11,655	+5%	101,089	115,171	+14%
SHEEPMEAT						
Lambs & Hoggets	599	675	+13%	8,459	7,895	-43%
Ewes & Rams	98	82	-16%	709	669	-61%
Total Sheepmeat	697	757	+9%	1,135	621	-45%
The above figures are provisional; any amendments will be incorporated in the cumulative data (source DAERA).						

Market Information January 2017
Page 9

Total Carcase Weight Produced for the Food Chain
Year-to-Date (tonnes – t.)

Month	Prime Cattle		Cows & Bulls		Lambs/Hoggets		Ewes & Rams	
	2016	2017	2016	2017	2016	2017	2016	2017
January	8,471	9,001	2,489	2,527	599	675	98	82
February								
March								
April								
May								
June								
July								
August								
September								
October								
November								
December								
Total	8,471	9,001	2,489	2,527	599	675	98	82
Change (t.)	530		38		76		-16	
% Change	6.26%		1.54%		12.74%		-16.48%	

**excludes calves*

Change in Throughput / Production

Last 4 weeks 2016/2017

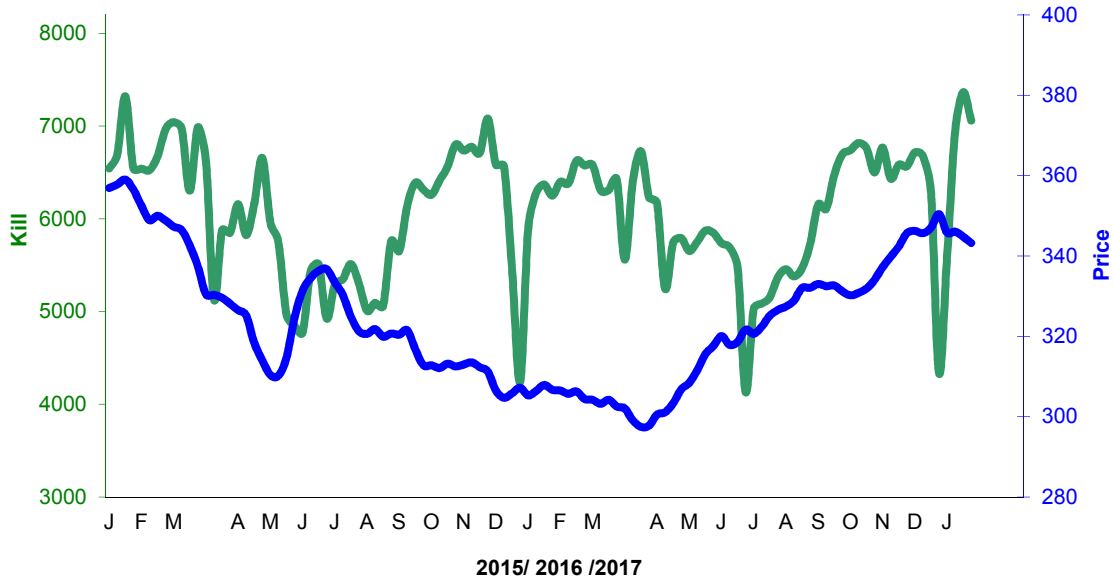
Change in Throughput / Production 2016/2017

January			
2016/2017	Number	Tonnage	ACW Kg
Prime	8.7%	6.3%	-8.04
Cows	4.3%	1.2%	-9.28
Total	7.8%	5.3%	-9.78
Lamb	9.9%	12.7%	0.55
Ewes and Rams	-17.3%	-16.5%	0.21
Total Sheep	6.7%	8.6%	0.37

Supply and Price

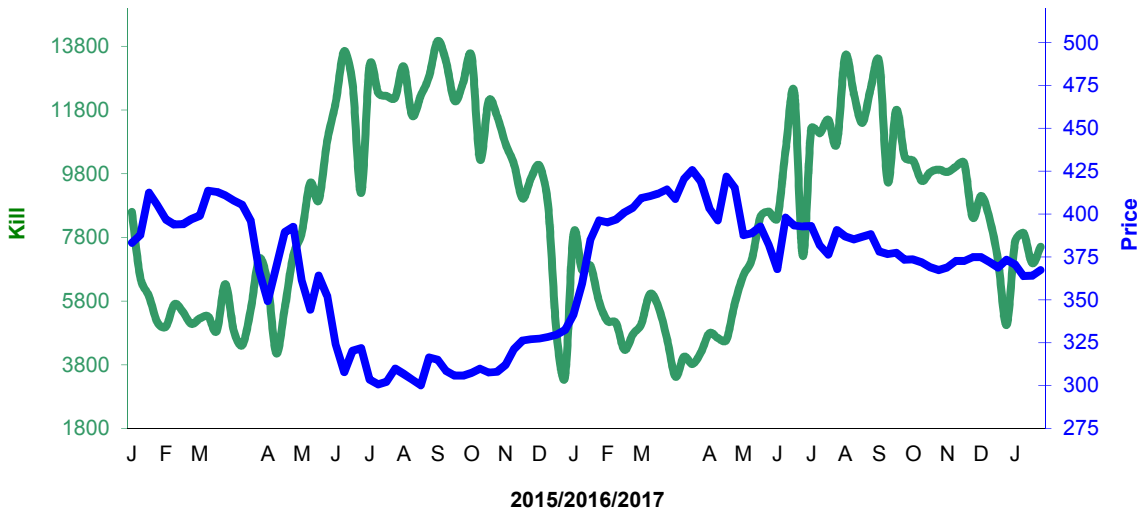
NI Clean Cattle Kill vs. Average Clean Cattle Price

NI Prime Cattle Kill vs Deadweight Prime Cattle Price



NI Lamb/Hogget Kill vs. Average Lamb / Hogget Price

NI Lamb/Hogget Slaughter versus Deadweight Lamb/Hogget Price

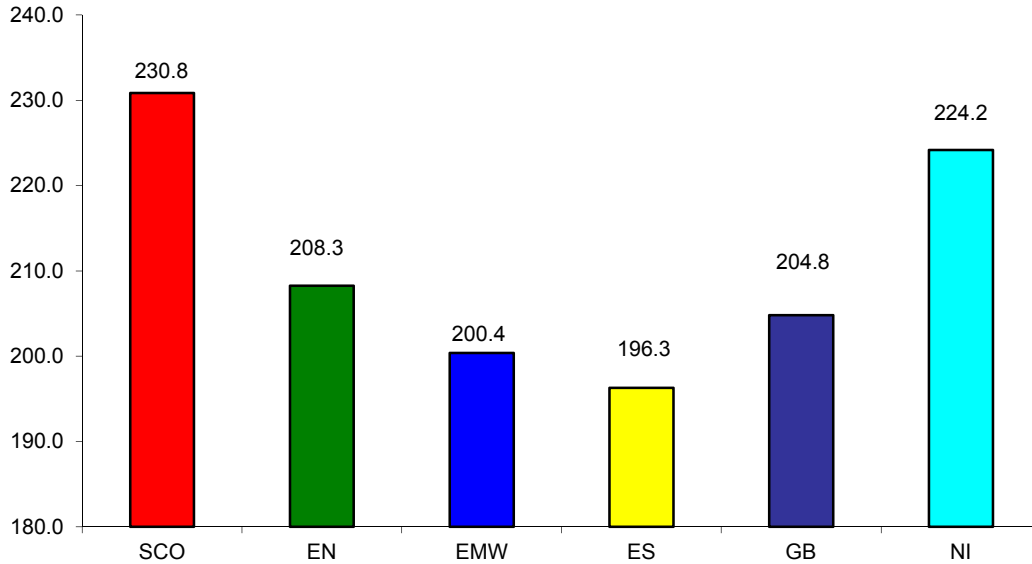


Green	Supply (Kill)
Blue	Price

BRITISH ISLES COMPARISONS

UK Average Cow Prices

52 Weeks to 28 January 2017

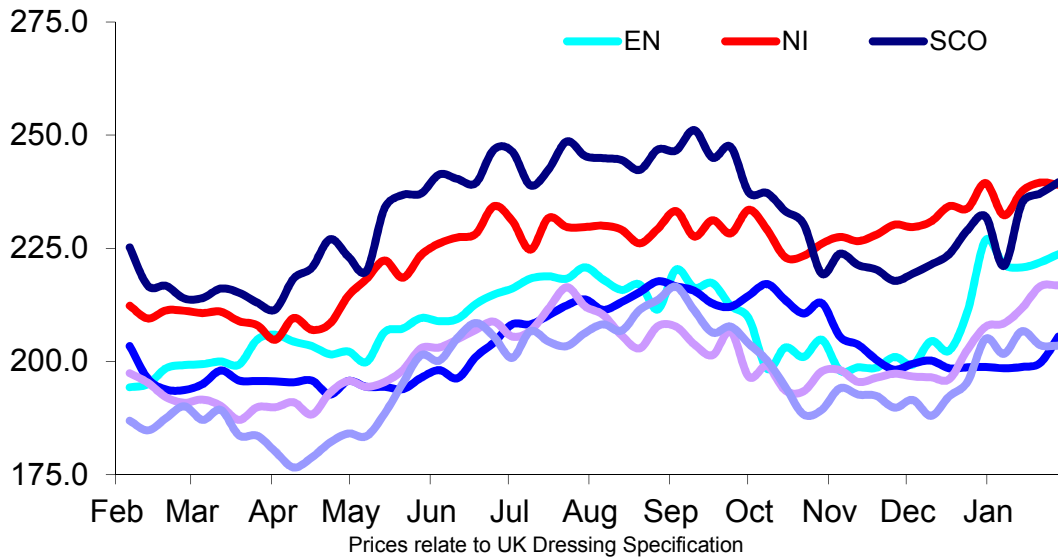


SCO	Scotland
EN	England North
EMW	England Midlands and Wales
ES	England South
NI	Northern Ireland
GB	Great Britain

Prices relate to UK Dressing Specification

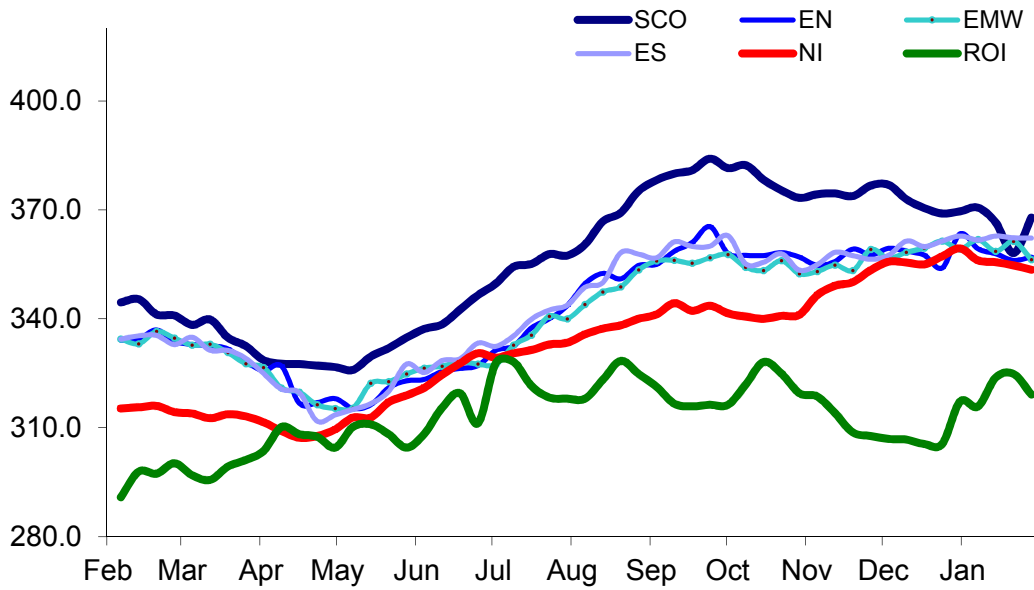
Weekly UK Cow Prices

52 Weeks to 28 January 2017



British Isles R3 Steer Price

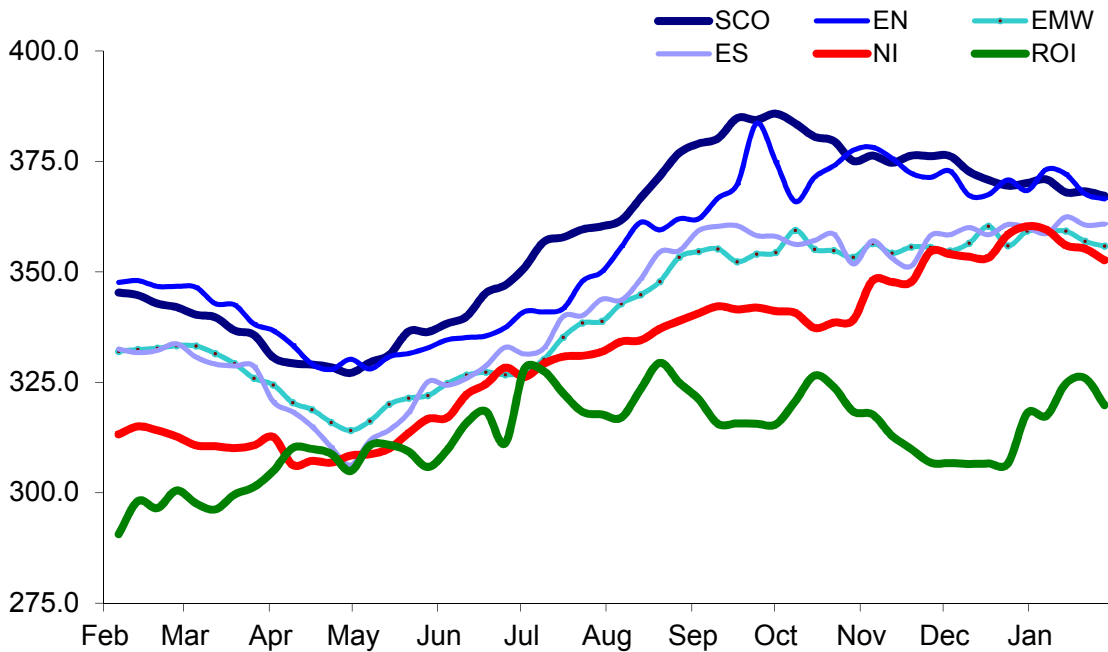
52 Weeks to 28 January 2017



Prices relate to UK Dressing Specification

British Isles R4 Steer Price

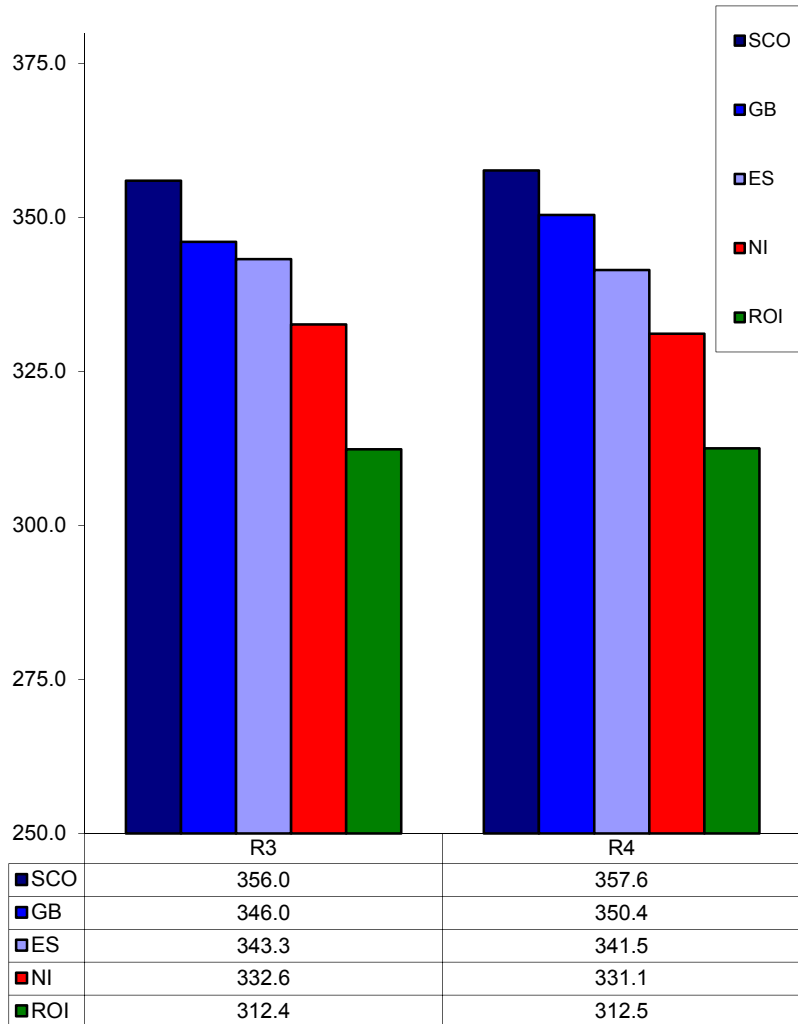
52 Weeks to 28 January 2017



Prices relate to UK Dressing Specification

British Isles Average R3 and R4 Steer price

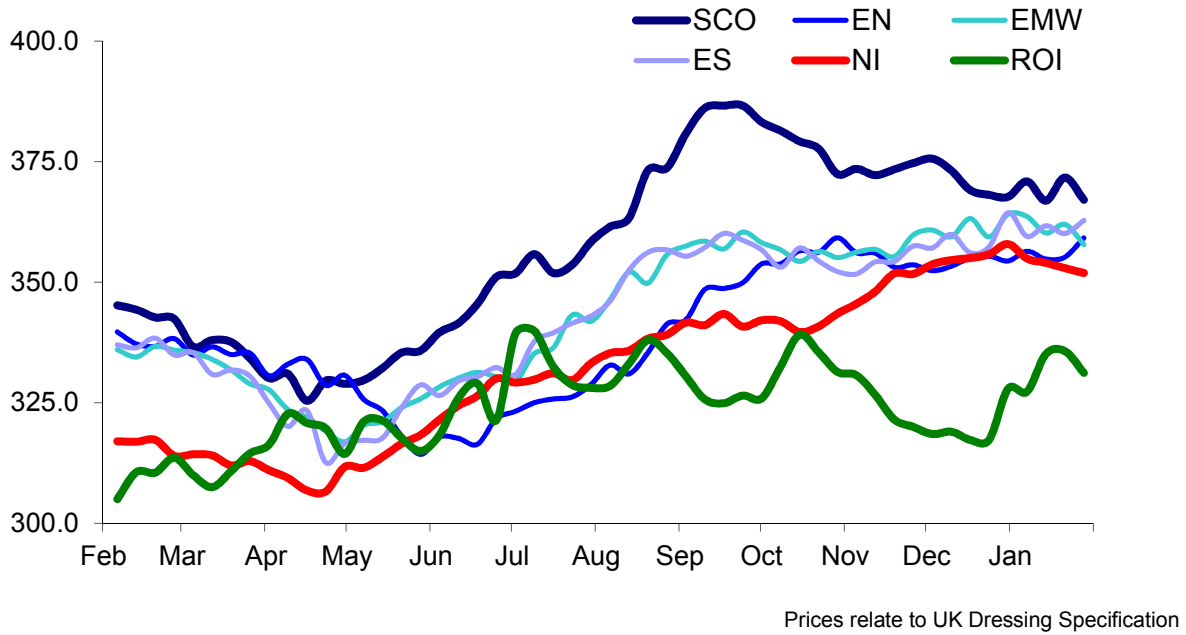
52 Weeks to 28 January 2017



Prices relate to UK Dressing Specification

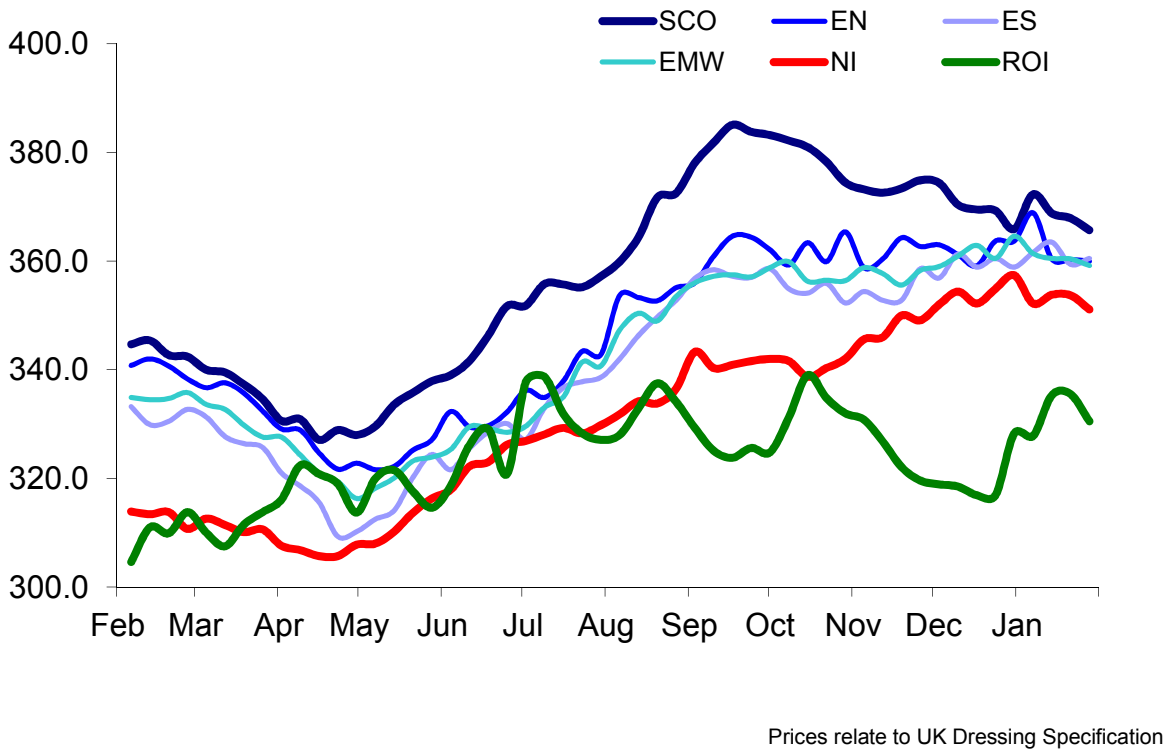
British Isles R3 Heifer Price

52 Weeks to 28 January 2017



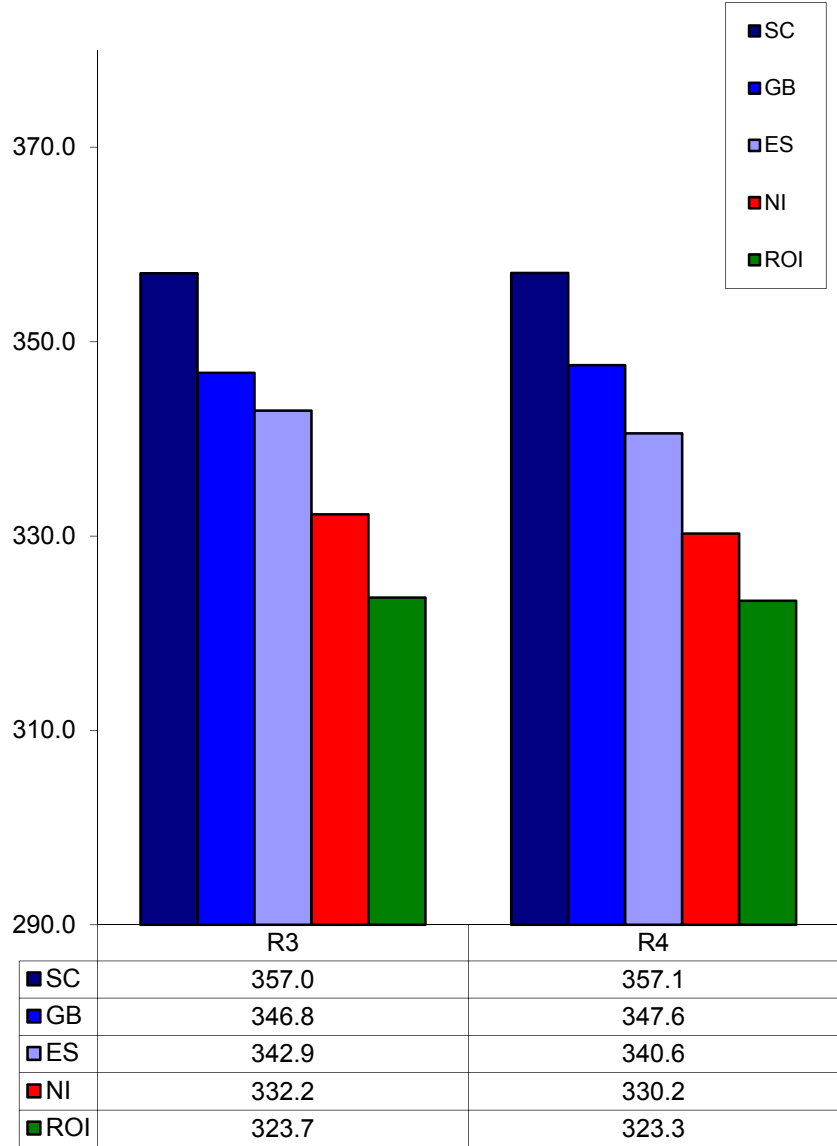
British Isles R4 Heifer Price

52 Weeks to 28 January 2017



British Isles Average R3 and R4 Heifer price

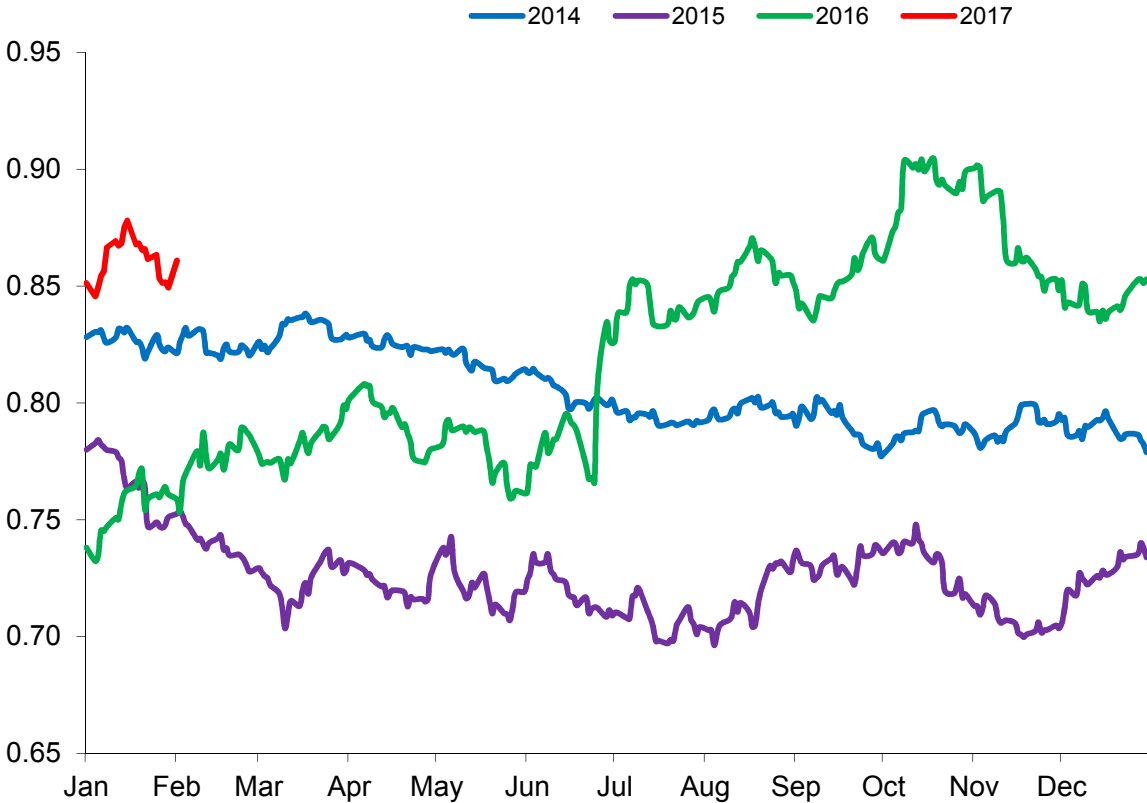
52 Weeks to 28 January 2017



Prices relate to UK Dressing Specification

Exchange Rate £ / Euro

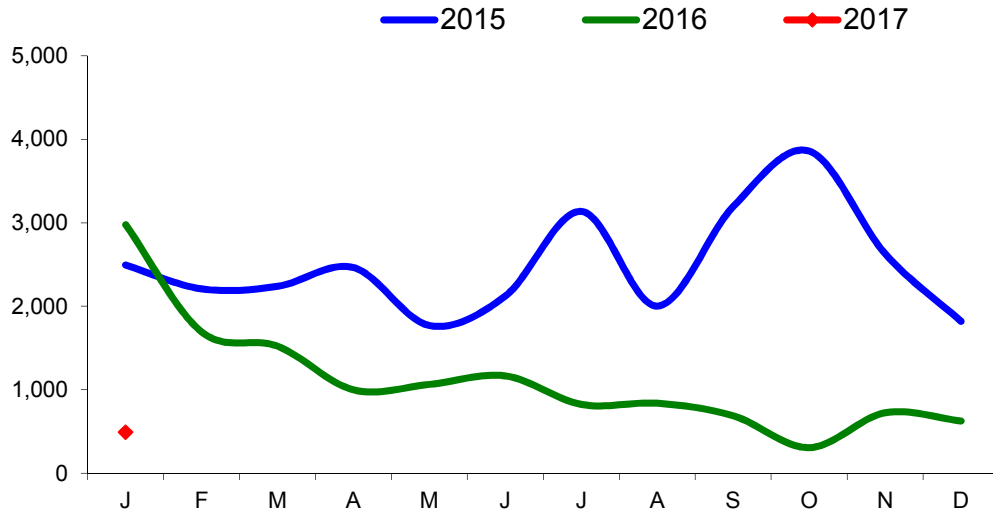
01 January 2013 – 31 January 2017



Imports

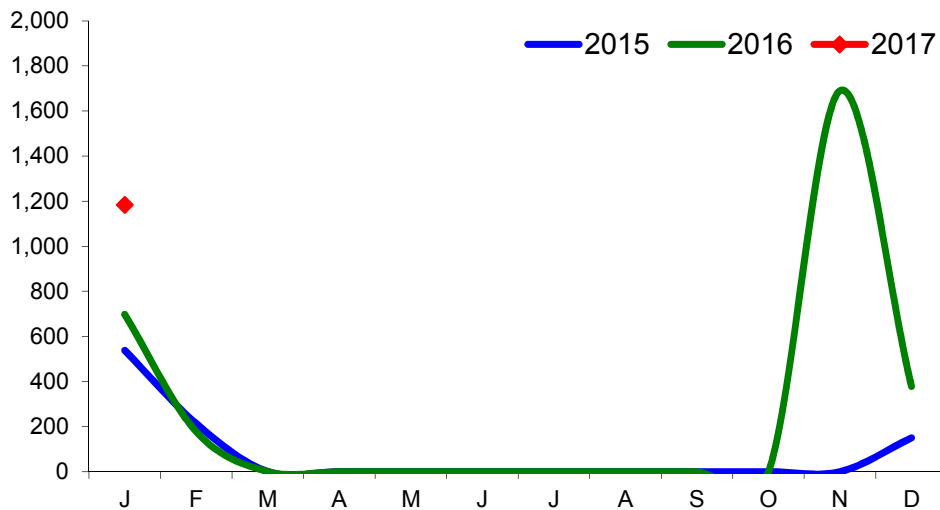
Monthly Live Imports of Cattle into NI for Direct Slaughter

From ROI and GB Combined



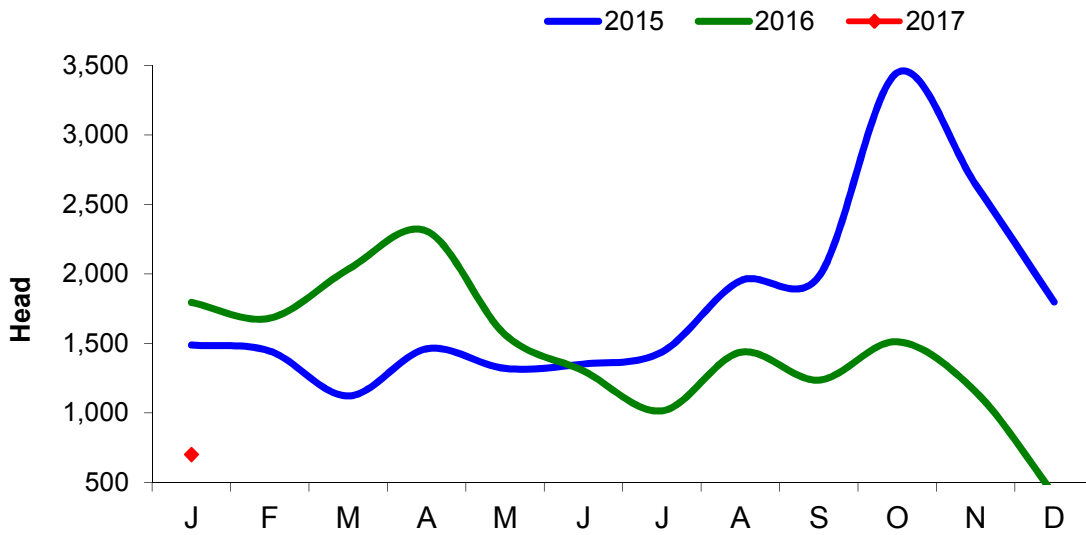
Monthly Live Imports of Sheep into NI for Direct Slaughter

From ROI and GB Combined



Exports

Monthly Live Exports of Cattle from NI into ROI and GB



Monthly Live Exports of Sheep from NI into ROI and GB

