

LMC

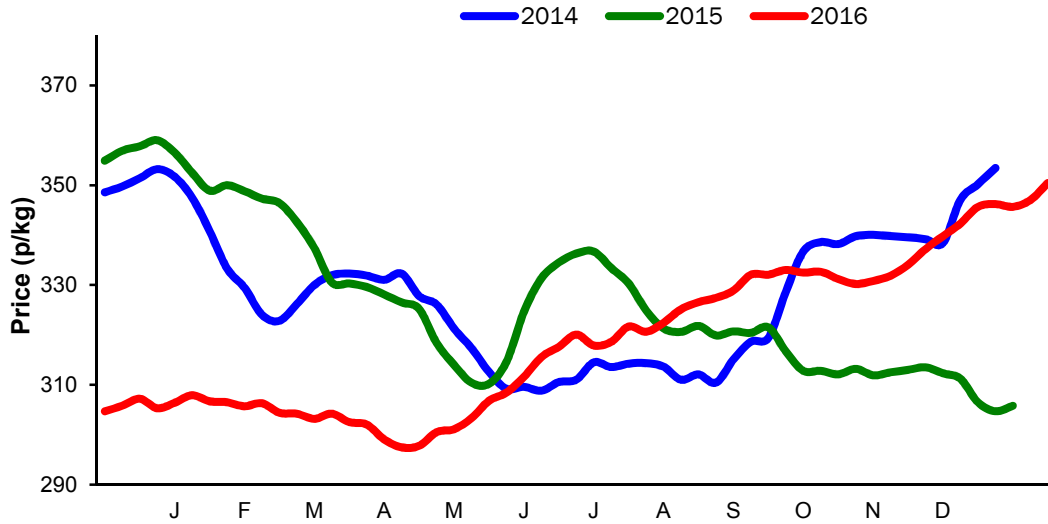
**Monthly Economic Review
December 2016**

Contents

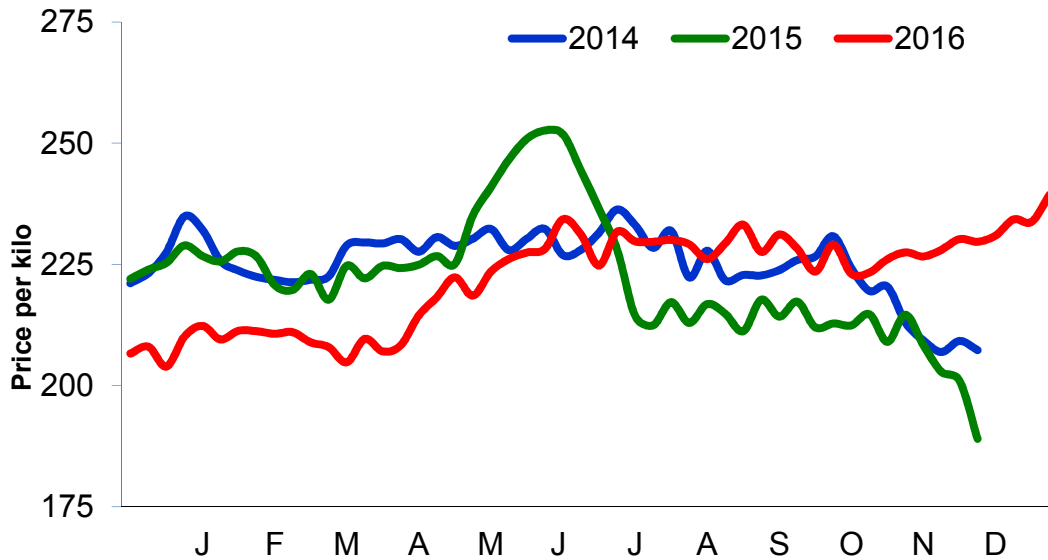
Contents	2
Cattle Prices.....	4
Average NI Clean Cattle Price.....	4
Average NI Cow Price	4
Cattle Slaughtering.....	5
NI Clean Cattle Slaughtering – Cumulative	5
NI Weekly Clean Cattle Slaughtering	5
NI Weekly Cow Slaughtering.....	5
Sheep Prices.....	6
Average NI Lamb / Hogget Price.....	6
Sheep Slaughtering.....	7
Cumulative Lamb & Hogget Slaughtering.....	7
Total Weekly Lamb & Hogget Slaughtering.....	7
Total Weekly Ewe and Ram Slaughtering	7
Total Carcase Weight Produced for the Food Chain.....	8
Change in Throughput / Production	9
Supply and Price.....	10
NI Lamb/Hogget Kill vs. Average Lamb / Hogget Price	10
NI Clean Cattle Kill vs. Average Clean Cattle Price.....	10
British Isles Price Comparisons	11
UK Average Cow Prices	11
Weekly UK Cow Prices	11
British Isles R3 Steer Price	12
British Isles R4 Steer Price	12
British Isles Average R3 and R4 Steer price	13
British Isles R3 Heifer Price	14
British Isles R4 Heifer Price	14
British Isles Average R3 and R4 Heifer price	15
Exchange Rate £ / Euro.....	16
Imports.....	17
Monthly Live Imports of Cattle into NI for Direct Slaughter.....	17
Monthly Live Imports of Sheep into NI for Direct Slaughter.....	17
Exports.....	18
Monthly Live Exports of Cattle from NI into Rol and GB.....	18
Monthly live Exports of Sheep from NI into Rol and GB.....	18

Cattle Prices

Average NI Clean Cattle Price

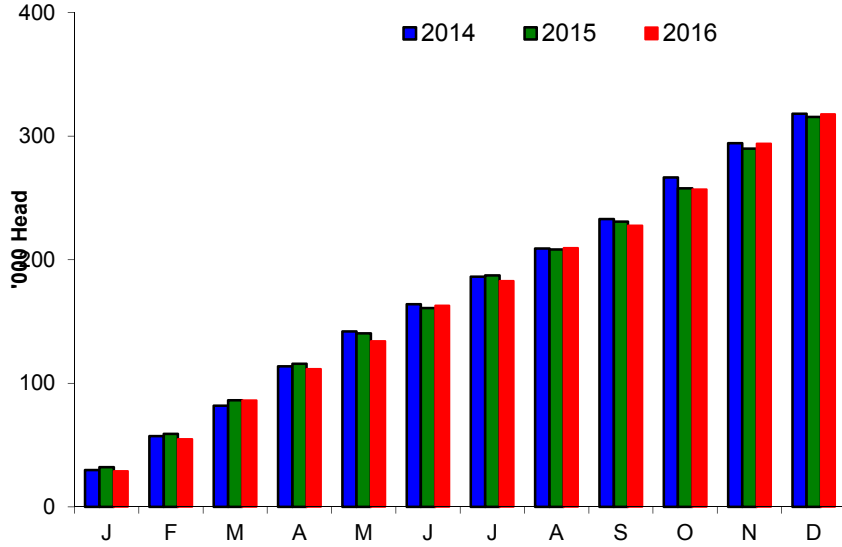


Average NI Cow Price

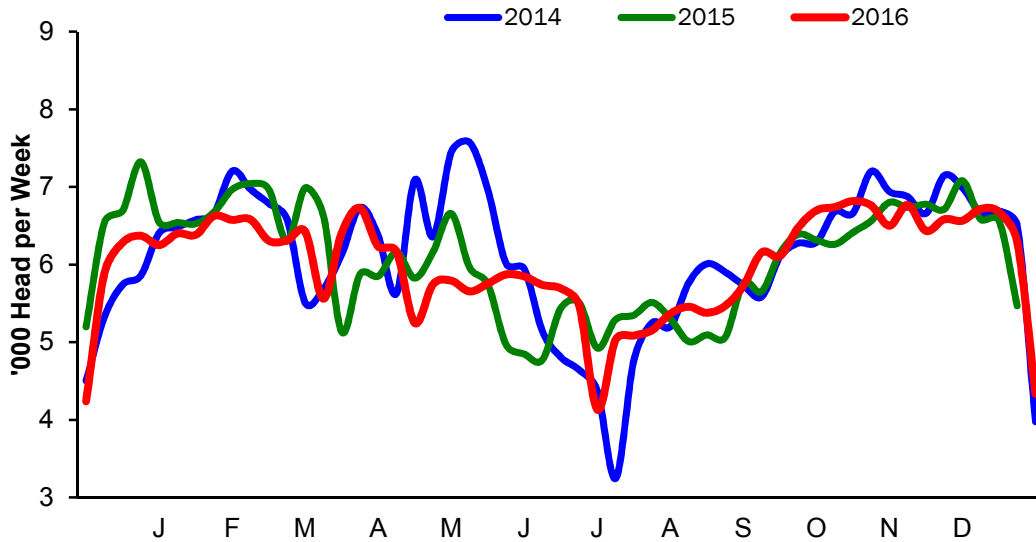


Cattle Slaughtering

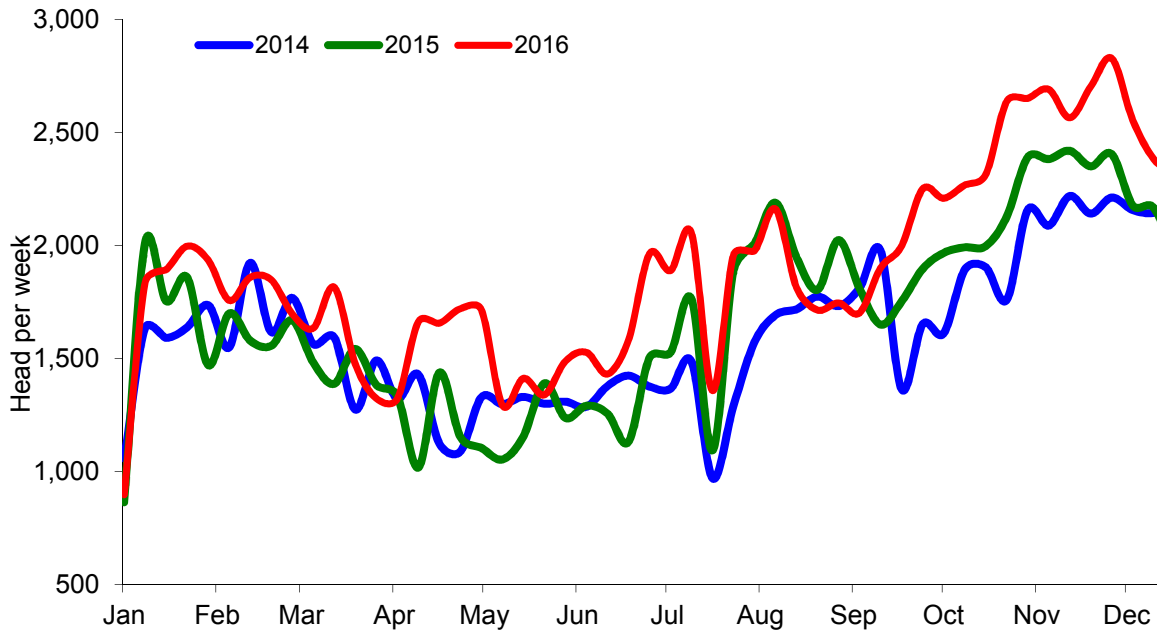
NI Clean Cattle Slaughtering – Cumulative



NI Weekly Clean Cattle Slaughtering

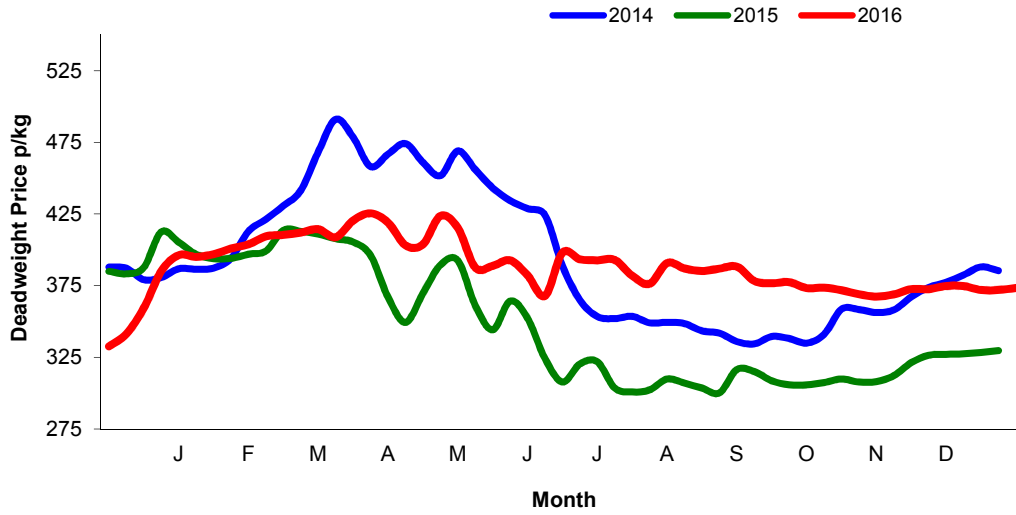


NI Weekly Cow Slaughtering



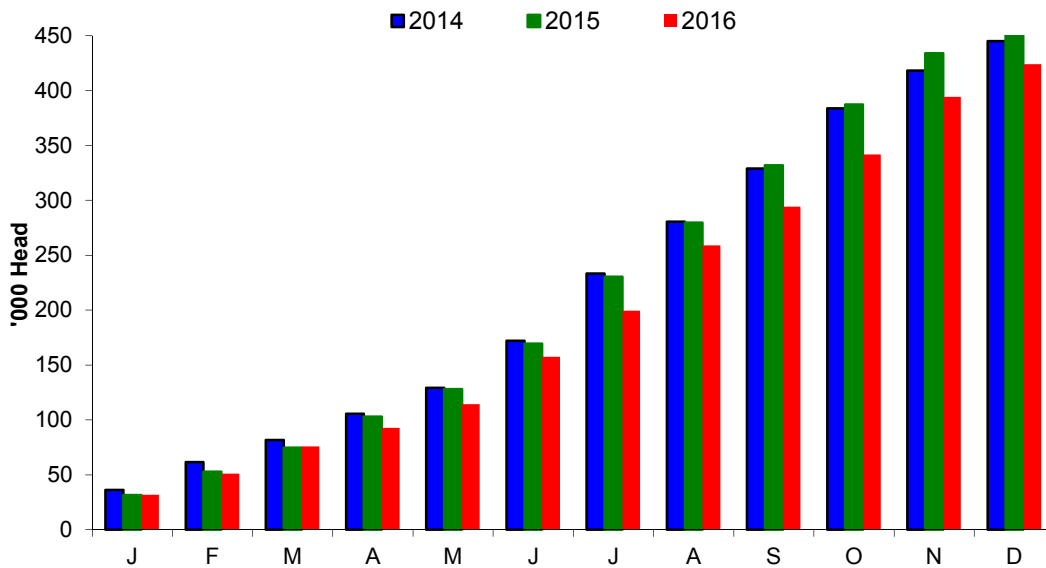
Sheep Prices

Average Deadweight NI Hogget / Lamb Price

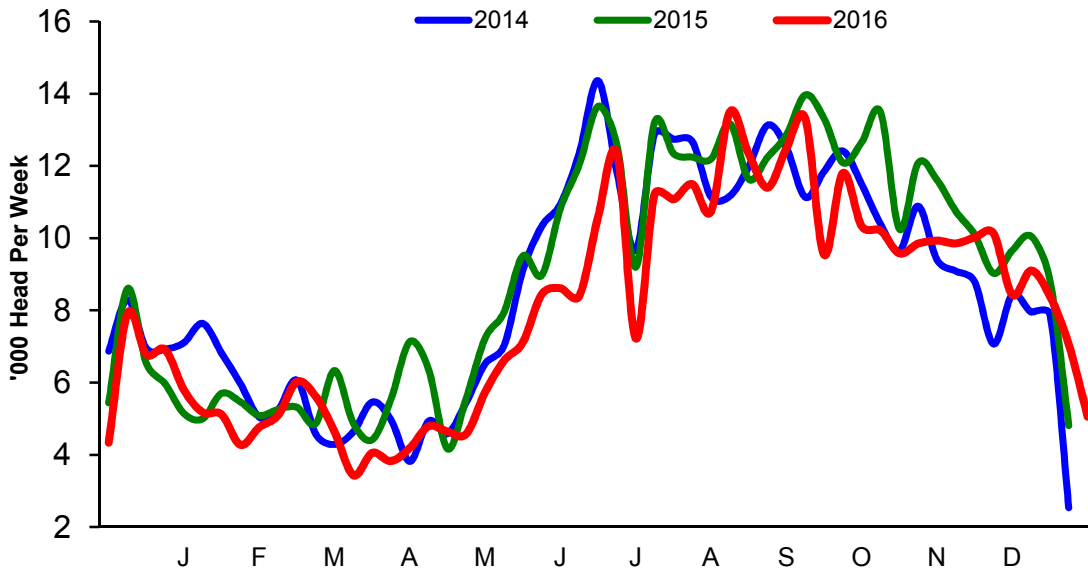


Sheep Slaughterings

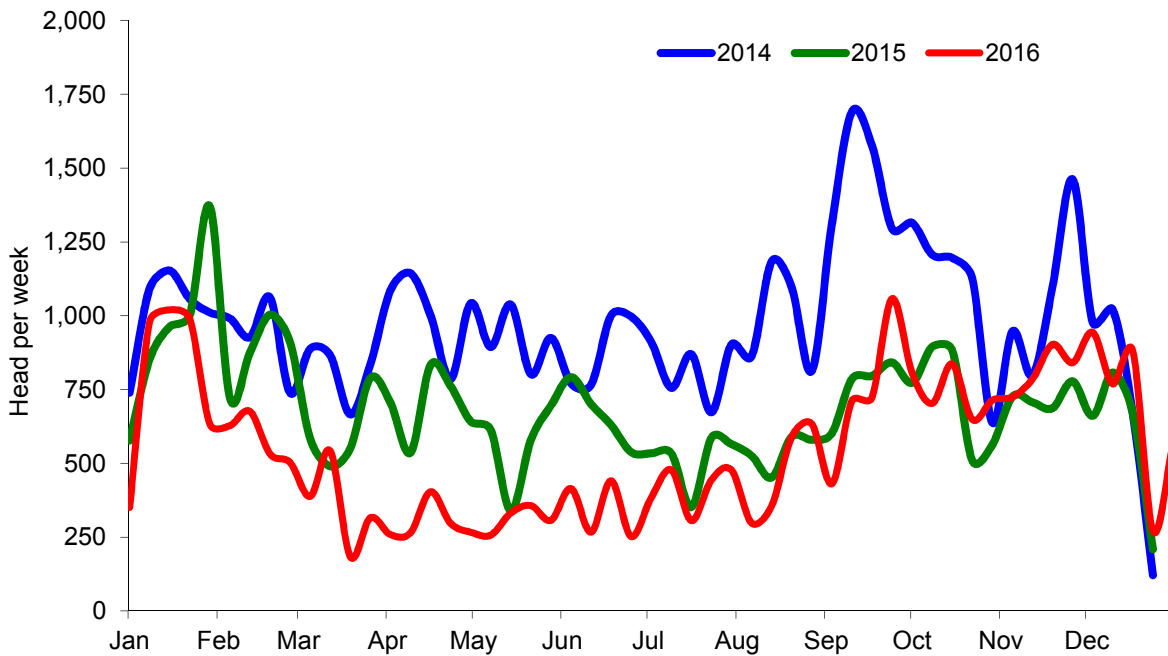
Cumulative Lamb & Hogget Slaughterings



Total Weekly Lamb & Hogget Slaughtering



Total Weekly Ewe and Ram Slaughtering



Market Information December 2016

Page 8

NI CATTLE AND SHEEP SLAUGHTERINGS FOR THE FOODCHAIN						
	December			Year to Date		
	(4 weeks ended 31/12/16)			(39 weeks ended 31/12/16)		
	Dec-15	Dec-16	% Change	2015	2016	Change
CATTLE						
Steers	13,837	12,830	-7%	122,533	120,664	-2%
Heifers	9,341	8,980	-4%	83,173	82,861	-0%
Young Bulls / Calves	2,519	2,214	-12%	23,519	28,262	+20%
Total Prime Cattle	25,697	24,024	-7%	229,225	231,787	+1%
Calves	598	635	+6%	4,869	5,723	+0%
Cows	7,413	7,926	+7%	66,851	76,654	+15%
Mature Bulls	294	253	-14%	3,116	3,300	+6%
Total Cattle	34,002	32,838	-3%	304,061	317,464	+4%
SHEEP						
Lambs & Hoggets	33,359	29,602	-11%	392,601	348,028	-11%
Ewes & Rams	2,347	2,483	+6%	24,982	21,143	-15%
Total Sheep	35,706	32,085	-10%	417,583	369,171	-12%
The above figures are provisional; any amendments will be incorporated in the cumulative data (source DAERA).						

NI BEEF AND SHEEPMEAT PRODUCTION - FOODCHAIN						
	December			Year to Date		
	(4 weeks ended 31/12/16)			(39 weeks ended 31/12/16)		
	Dec-15	Dec-16	% Change	2015	2016	Change
BEEF						
Steers	4,960	4,488	-10%	43,504	42,470	-2%
Heifers	3,025	2,849	-6%	26,660	26,180	-2%
Young Bulls	847	746	-12%	8,012	9,326	+16%
Total Prime Beef	8,832	8,083	-8%	78,176	77,976	-0%
Calves	117	128	+9%	1,029	1,197	+16%
Cows	2,247	2,332	+4%	20,469	22,819	+11%
Mature Bulls	136	120	-12%	1,416	1,523	+8%
Total Beef	11,332	10,663	-6%	101,089	103,515	+2%
SHEEPMEAT						
Lambs & Hoggets	728	498	-32%	8,459	7,219	-43%
Ewes & Rams	61	60	-3%	709	587	-61%
Total Sheepmeat	789	558	-29%	1,135	621	-45%
The above figures are provisional; any amendments will be incorporated in the cumulative data (source DAERA).						

Market Information December 2016
Page 9

Total Carcase Weight Produced for the Food Chain
Year-to-Date (tonnes – t.)

Month	Prime Cattle		Cows & Bulls		Lambs/Hoggets		Ewes & Rams	
	2015	2016	2015	2016	2015	2016	2015	2016
January	10,829	9,924	2,569	2,772	712	675	127	107
February	8,919	8,906	2,085	2,334	476	422	92	61
March	9,199	10,704	1,882	2,466	482	551	66	47
April	7,850	8,617	1,564	2,188	493	367	79	37
May	8,380	7,577	1,518	1,869	500	465	62	38
June	8,876	9,789	2,148	2,785	1,064	916	103	54
July	7,214	6,644	2,122	2,407	1,038	868	60	51
August	8,904	9,014	3,235	2,915	1,304	1,230	79	66
September	7,778	8,248	2,326	2,612	1,121	982	86	92
October	8,745	9,082	2,675	3,030	1,043	848	86	80
November	11,598	10,922	3,914	4,084	1,167	1,046	93	111
December	8,832	8,083	2,383	2,452	728	498	61	60
Total	107,122	107,510	28,421	31,914	10,129	8,867	994	802
Change (t.)	388		3,492		-1,261		-192	
% Change	0.36%		12.29%		-12.45%		-19.32%	

*excludes calves

Change in Throughput / Production
Last 4 weeks 2015/2016

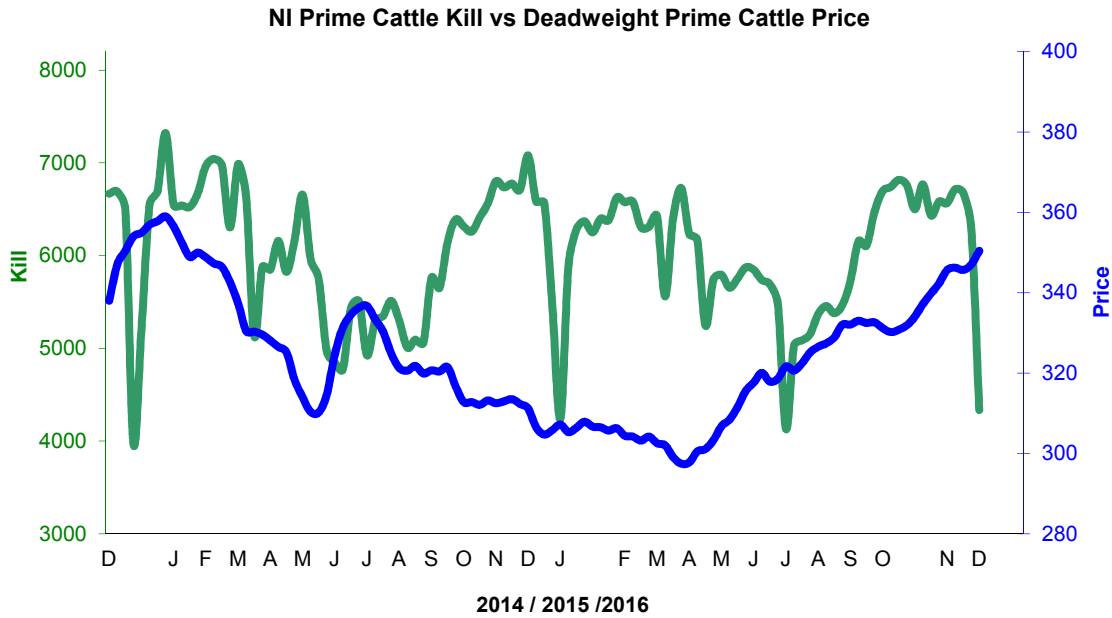
Change in Throughput / Production 2015/2016

December

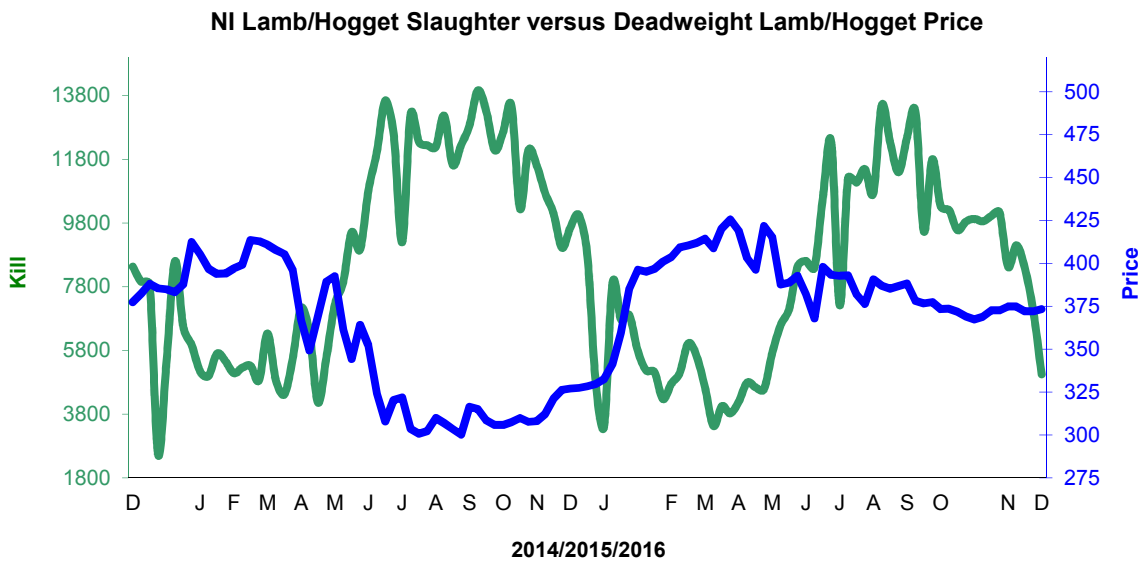
2015/2016	Number	Tonnage	ACW Kg
Prime	-6.5%	-8.5%	-6.62
Cows	6.9%	3.8%	-9.95
Total	-3.4%	-5.9%	-8.05
Lamb	-11.3%	-31.5%	0.30
Ewes and Rams	5.8%	-3.1%	0.54
Total Sheep	-10.1%	-29.3%	0.45

Supply and Price

NI Clean Cattle Kill vs. Average Clean Cattle Price



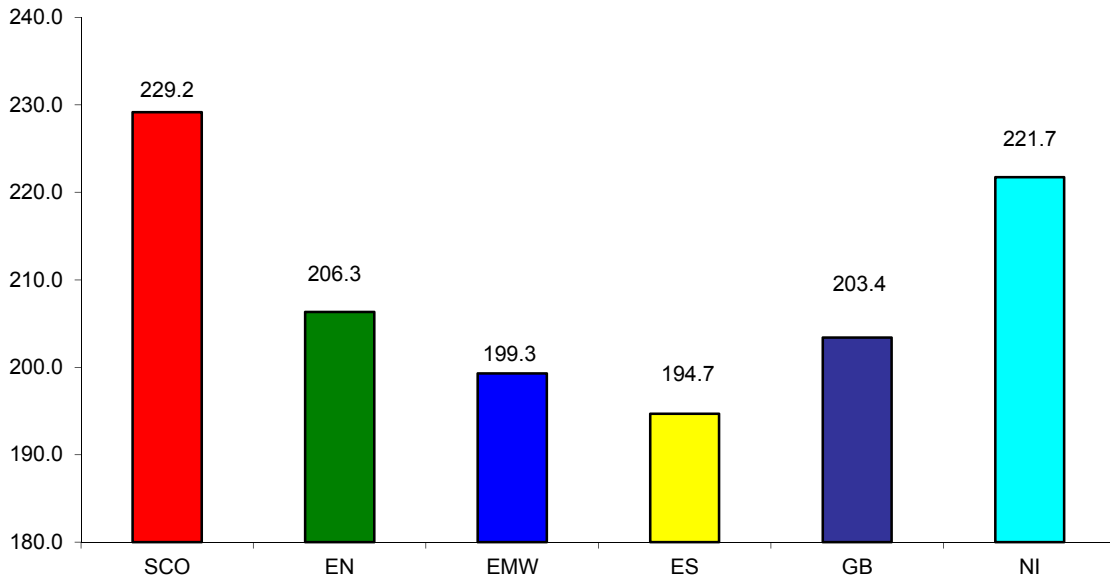
NI Lamb/Hogget Kill vs. Average Lamb / Hogget Price



Green	Supply (Kill)
Blue	Price

BRITISH ISLES COMPARISONS

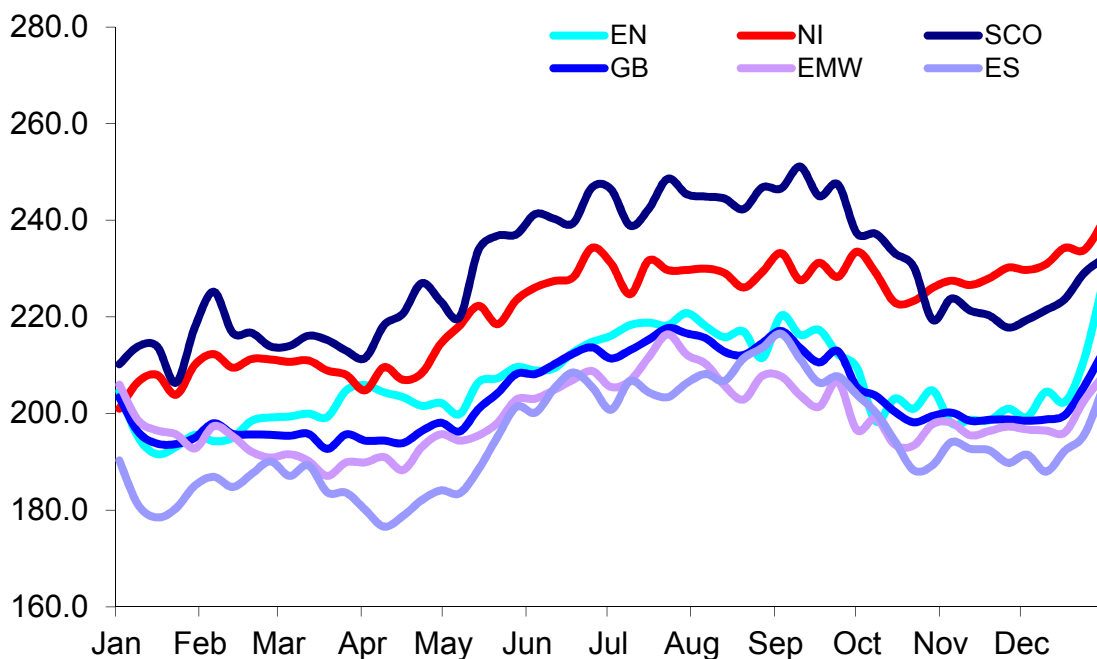
UK Average Cow Prices
52 Weeks to 31 December 2016



SCO	Scotland
EN	England North
EMW	England Midlands and Wales
ES	England South
NI	Northern Ireland
GB	Great Britain

Prices relate to UK Dressing Specification

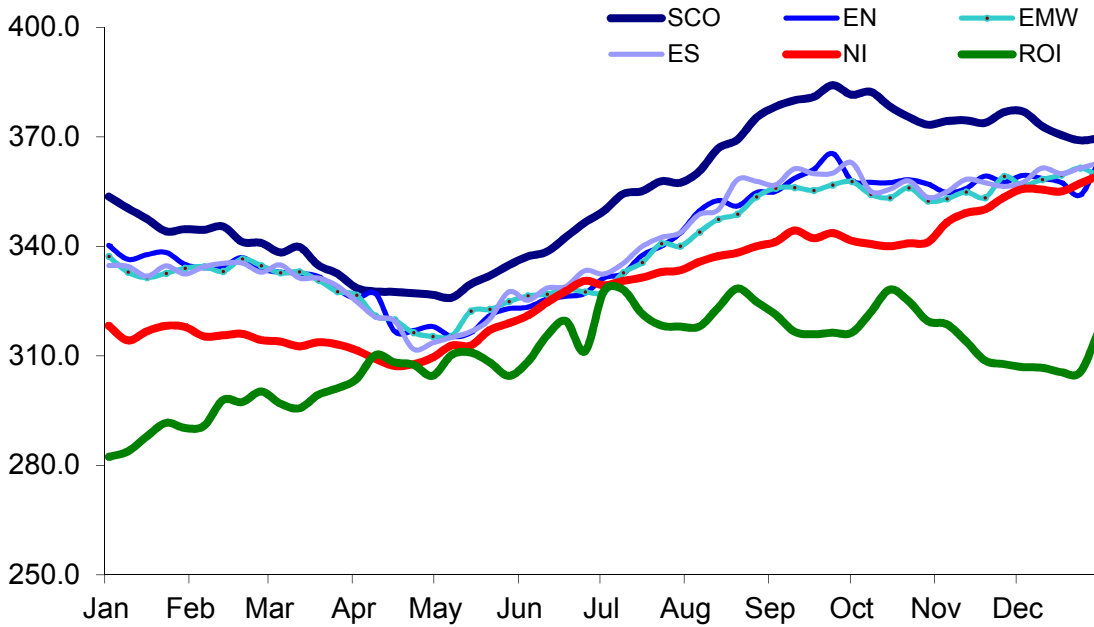
Weekly UK Cow Prices
52 Weeks to 31 December 2016



Market Information December 2016
Page 12

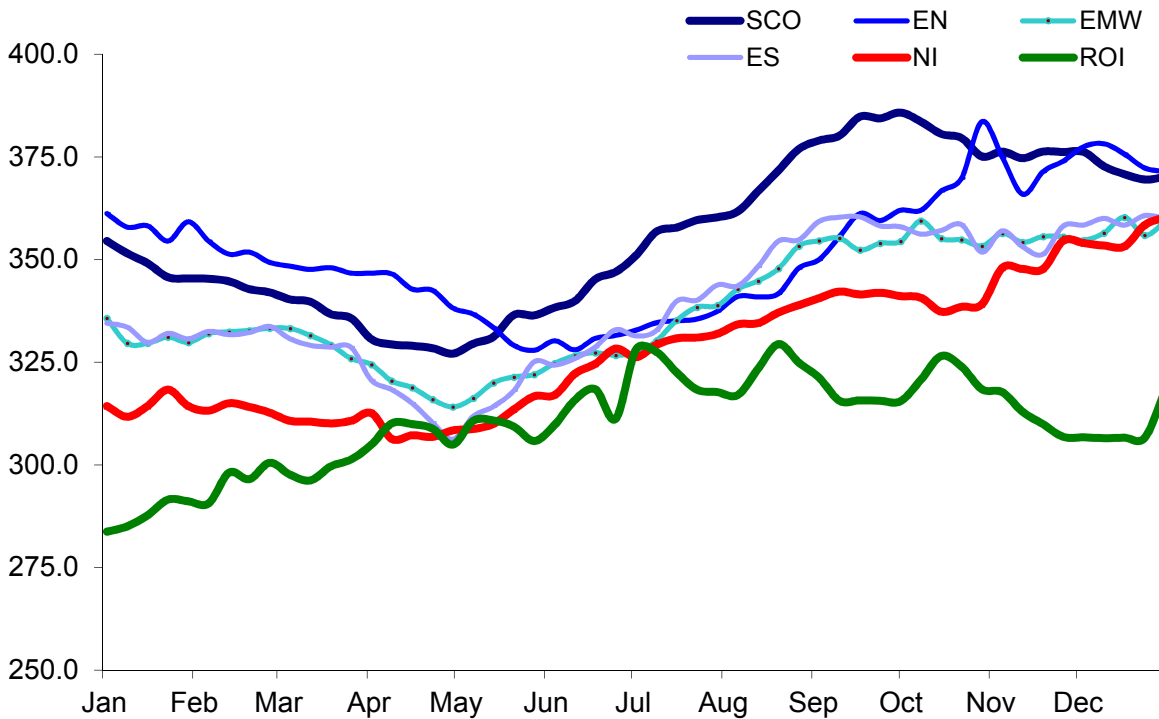
Prices relate to UK Dressing Specification

British Isles R3 Steer Price
52 Weeks to 31 December 2016



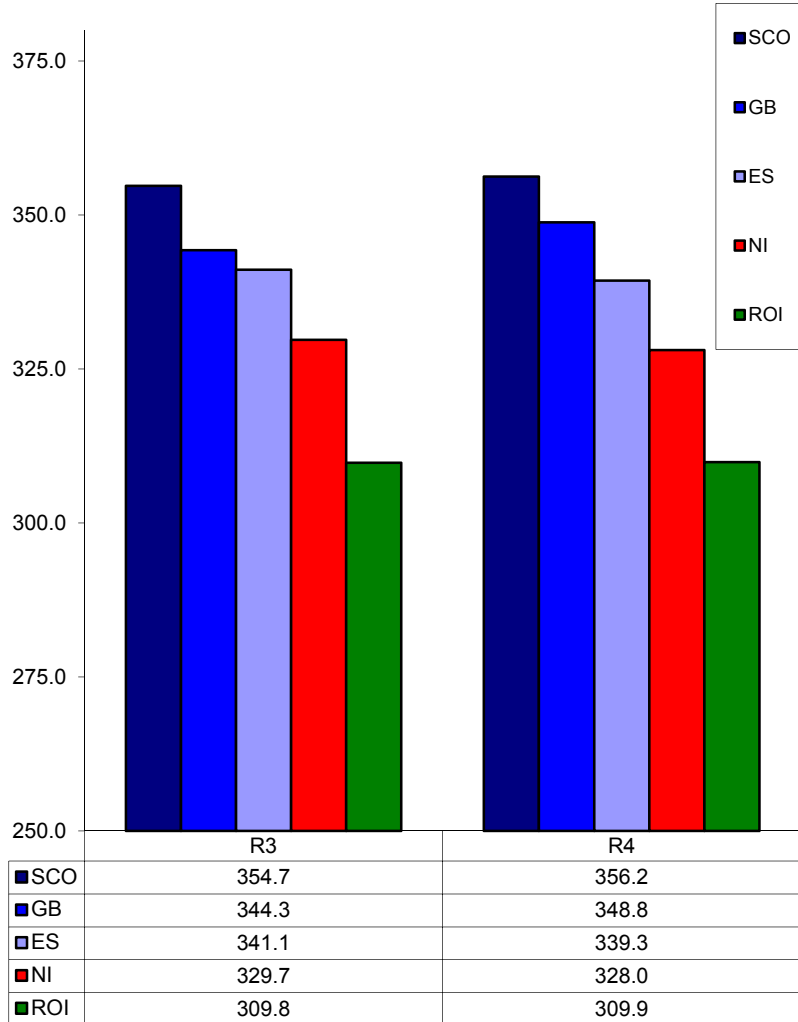
Prices relate to UK Dressing Specification

British Isles R4 Steer Price
52 Weeks to 31 December 2016



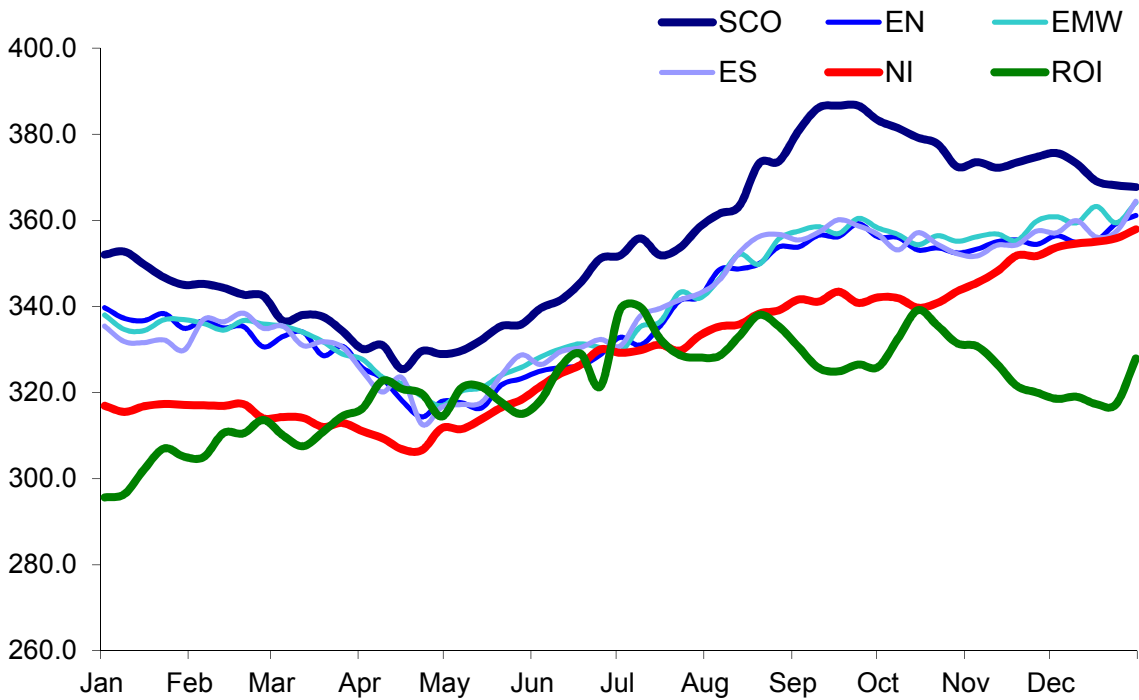
Prices relate to UK Dressing Specification

British Isles Average R3 and R4 Steer price
52 Weeks to 31 December 2016



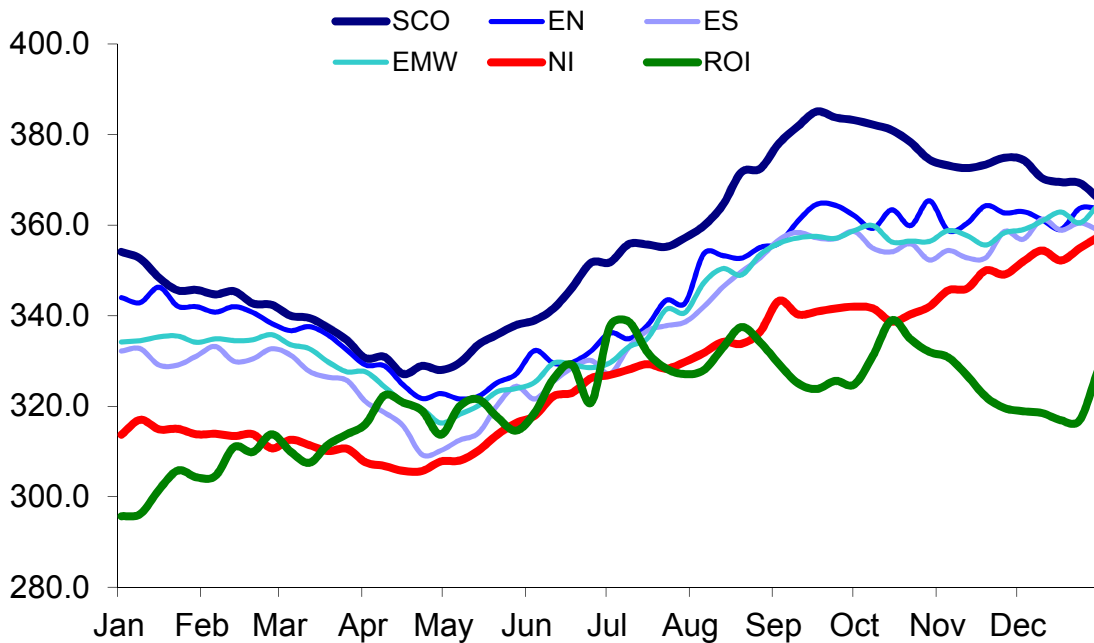
Prices relate to UK Dressing Specification

British Isles R3 Heifer Price
52 Weeks to 31 December 2016



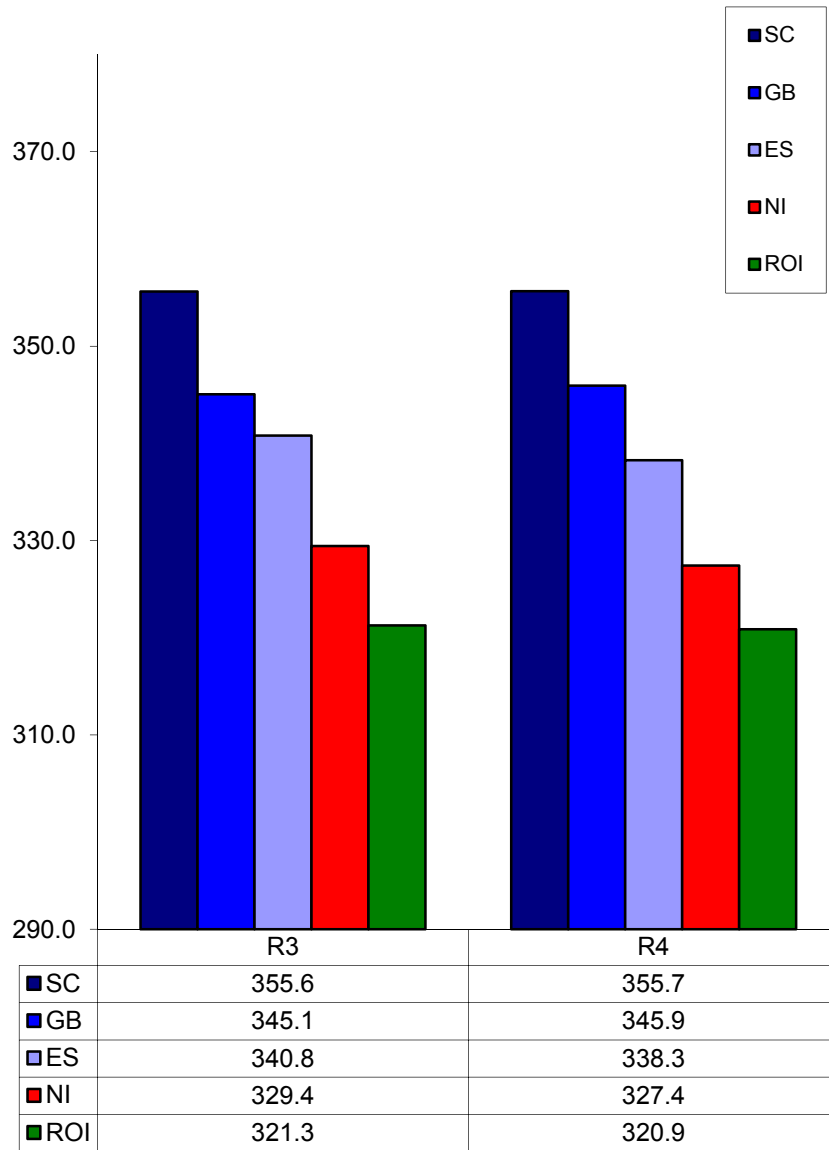
Prices relate to UK Dressing Specification

British Isles R4 Heifer Price
52 Weeks to 31 December 2016



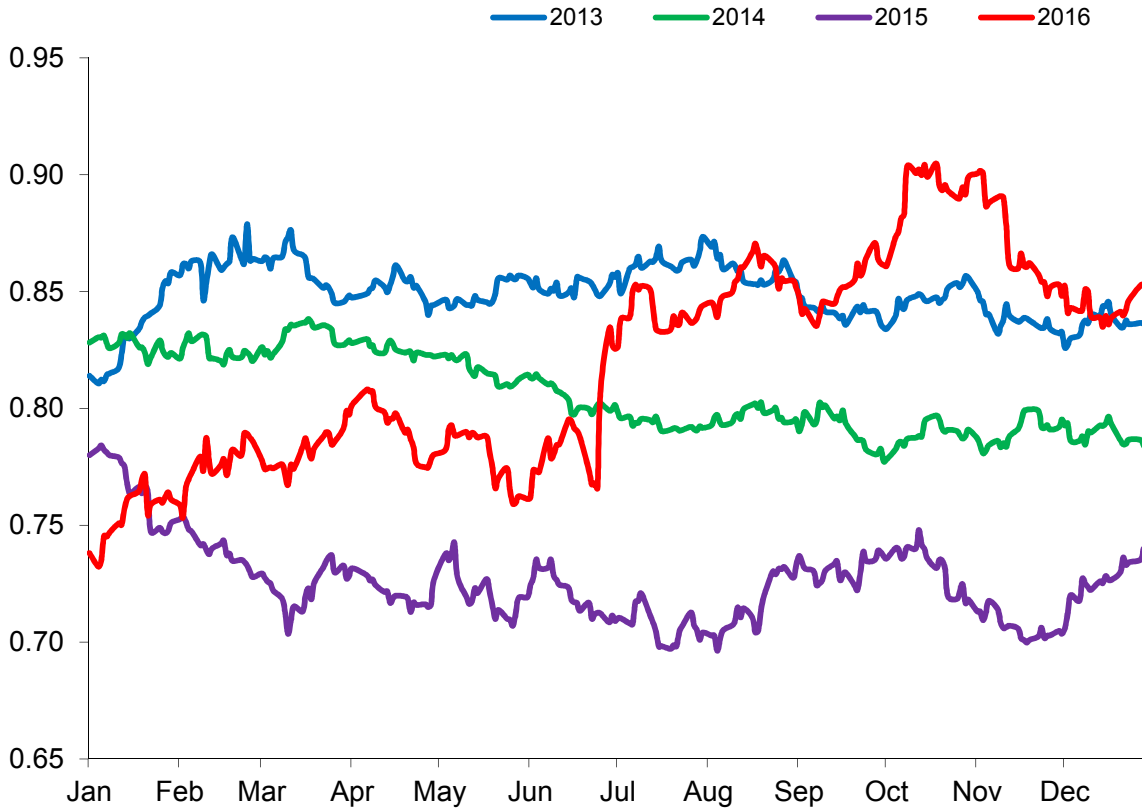
Prices relate to UK Dressing Specification

British Isles Average R3 and R4 Heifer price
52 Weeks to 31 December 2016



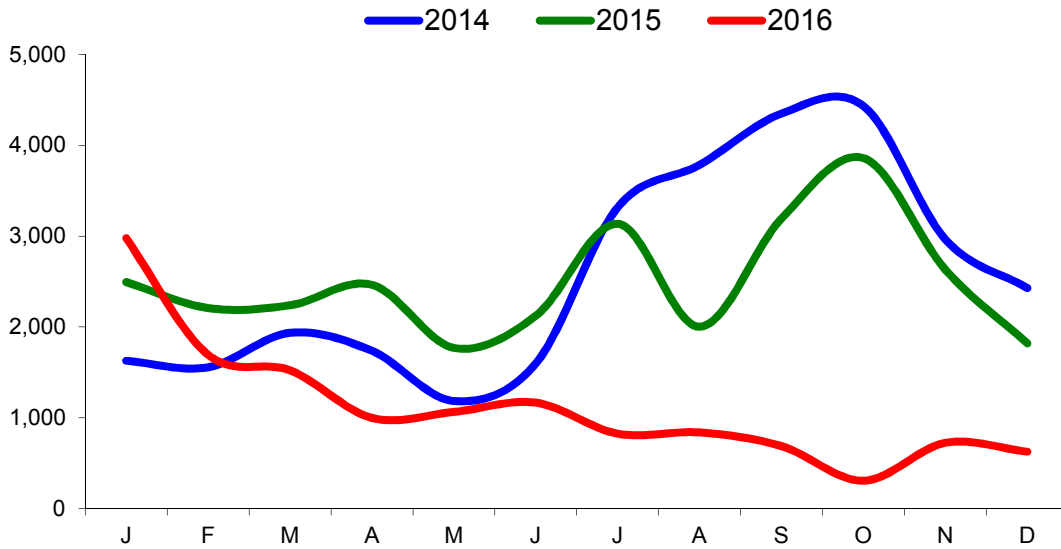
Prices relate to UK Dressing Specification

Exchange Rate £ / Euro
01 January 2013 – 31 December 2016

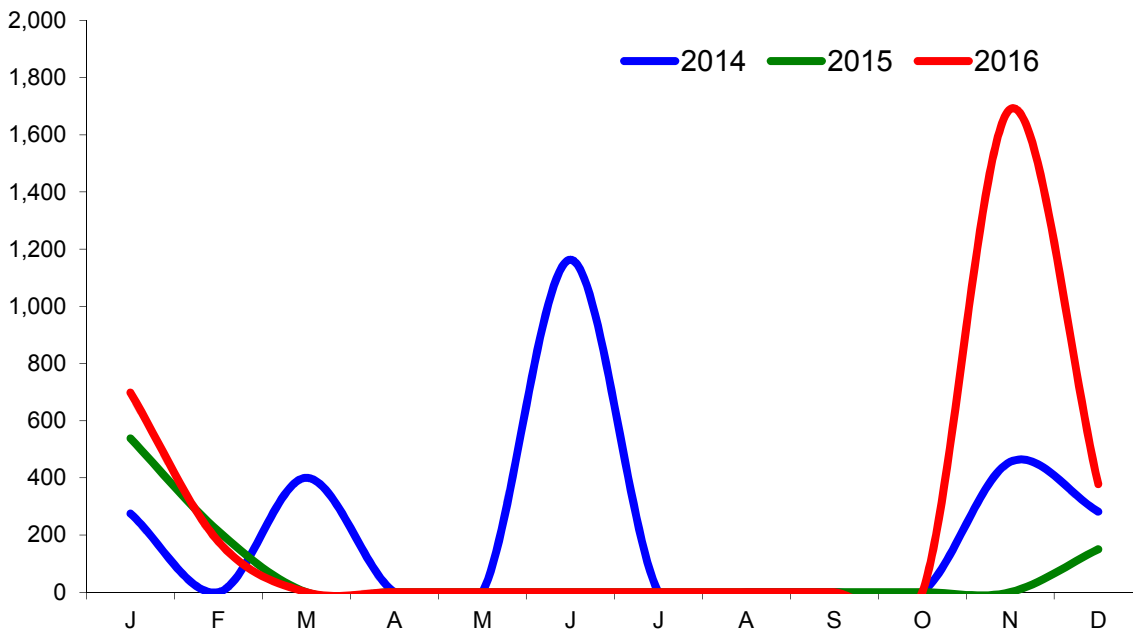


Imports

Monthly Live Imports of Cattle into NI for Direct Slaughter From ROI and GB Combined

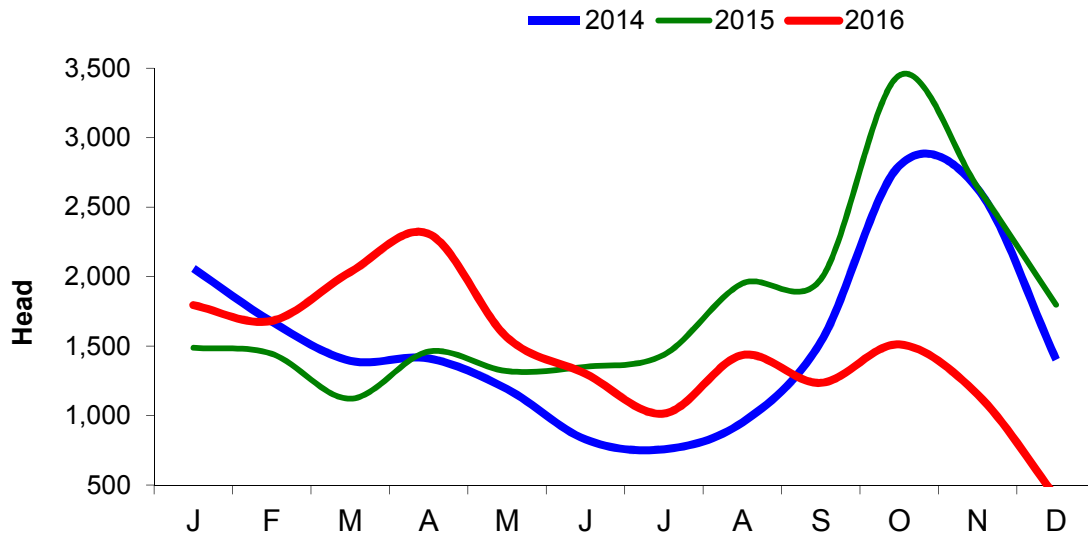


Monthly Live Imports of Sheep into NI for Direct Slaughter From ROI and GB Combined



Exports

Monthly Live Exports of Cattle from NI into ROI and GB



Monthly Live Exports of Sheep from NI into ROI and GB

