

**LMC**

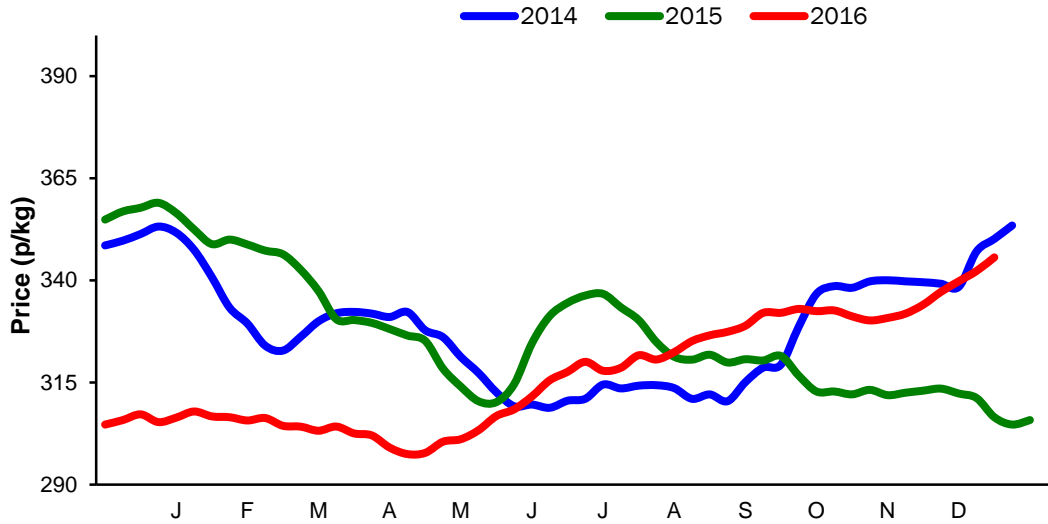
**Monthly Economic Review  
November 2016**

## Contents

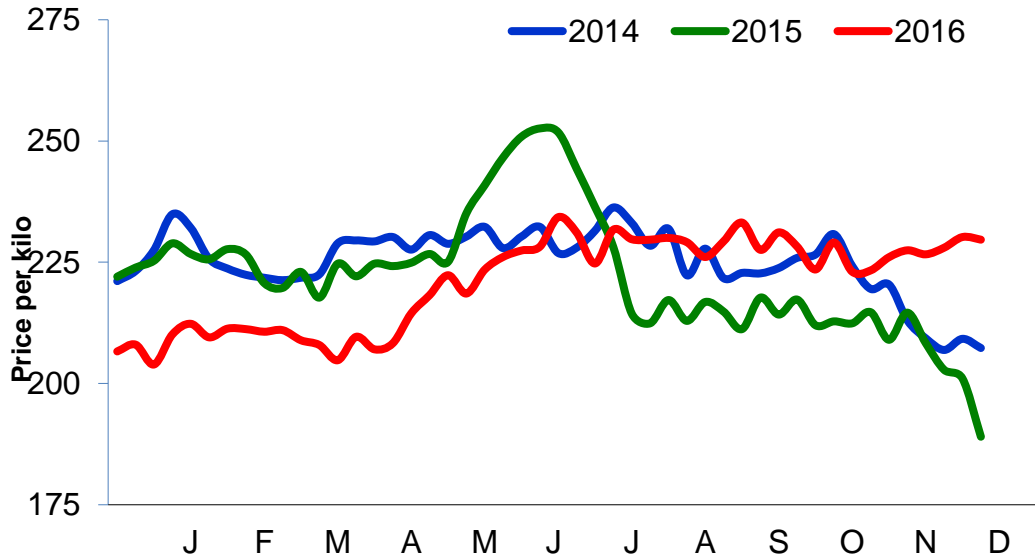
Contents .....	2
Cattle Prices.....	4
Average NI Clean Cattle Price.....	4
Average NI Cow Price .....	4
Cattle Slaughterings.....	5
NI Clean Cattle Slaughterings – Cumulative .....	5
NI Weekly Clean Cattle Slaughterings .....	5
NI Weekly Cow Slaughterings.....	5
Sheep Prices.....	6
Average NI Lamb / Hogget Price .....	6
Sheep Slaughterings.....	7
Cumulative Lamb & Hogget Slaughterings.....	7
Total Weekly Lamb & Hogget Slaughterings.....	7
Total Weekly Ewe and Ram Slaughterings .....	7
Total Carcase Weight Produced for the Food Chain.....	8
Change in Throughput / Production .....	9
Supply and Price.....	10
NI Lamb/Hogget Kill vs. Average Lamb / Hogget Price .....	10
NI Clean Cattle Kill vs. Average Clean Cattle Price.....	10
British Isles Price Comparisons .....	11
UK Average Cow Prices .....	11
Weekly UK Cow Prices .....	11
British Isles R3 Steer Price .....	12
British Isles R4 Steer Price .....	12
British Isles Average R3 and R4 Steer price .....	13
British Isles R3 Heifer Price .....	14
British Isles R4 Heifer Price .....	14
British Isles Average R3 and R4 Heifer price .....	15
Exchange Rate £ / Euro.....	16
Imports.....	17
Monthly Live Imports of Cattle into NI for Direct Slaughter.....	17
Monthly Live Imports of Sheep into NI for Direct Slaughter.....	17
Exports.....	18
Monthly Live Exports of Cattle from NI into Rol and GB.....	18
Monthly live Exports of Sheep from NI into Rol and GB.....	18

### Cattle Prices

#### Average NI Clean Cattle Price

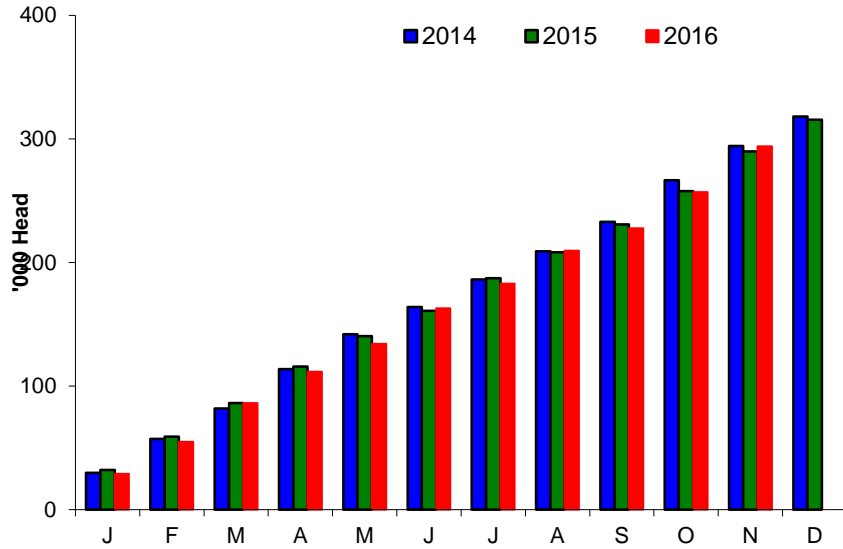


#### Average NI Cow Price

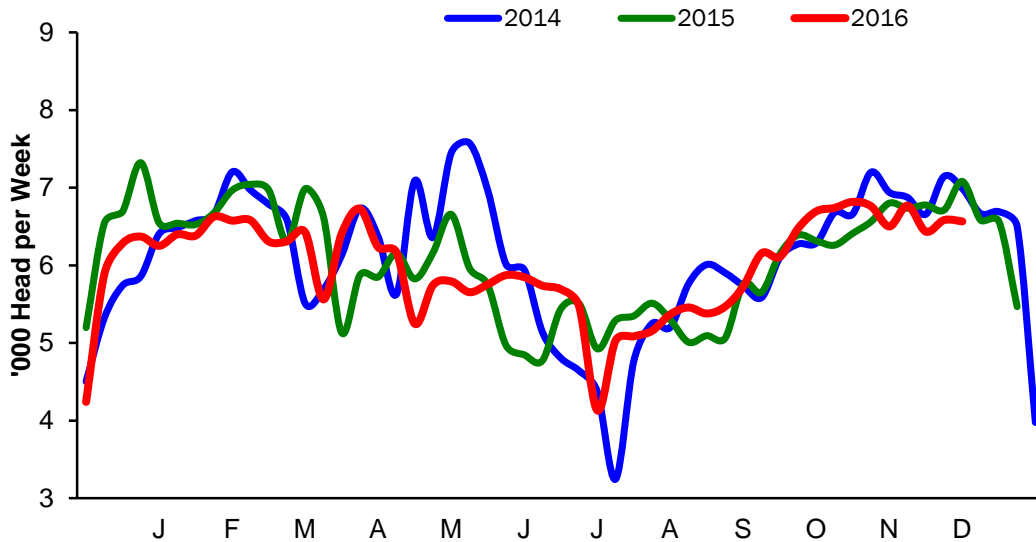


### Cattle Slaughtering

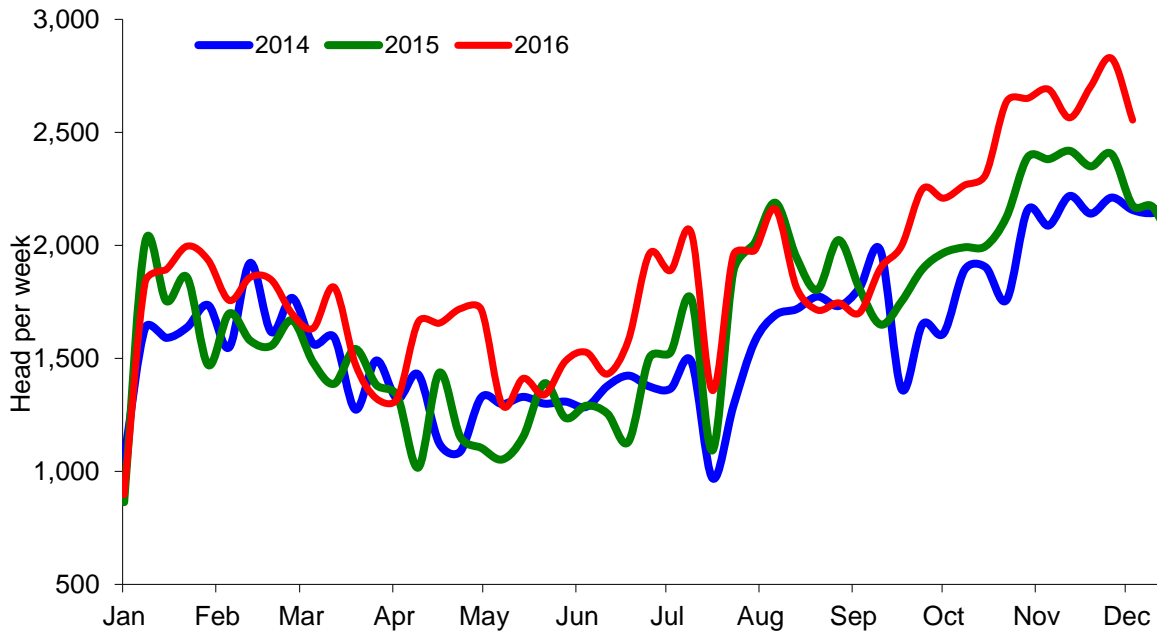
#### NI Clean Cattle Slaughtering – Cumulative



#### NI Weekly Clean Cattle Slaughtering

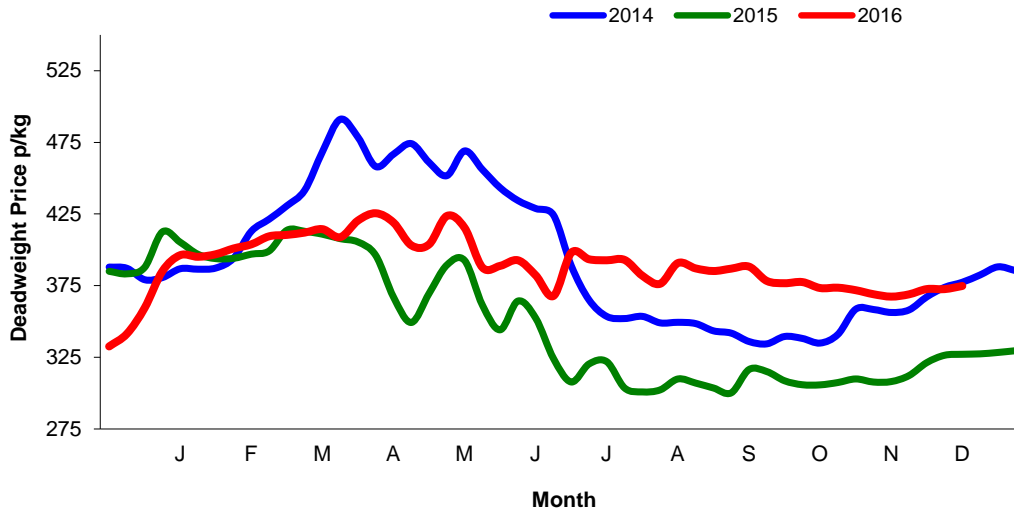


NI Weekly Cow Slaughtering



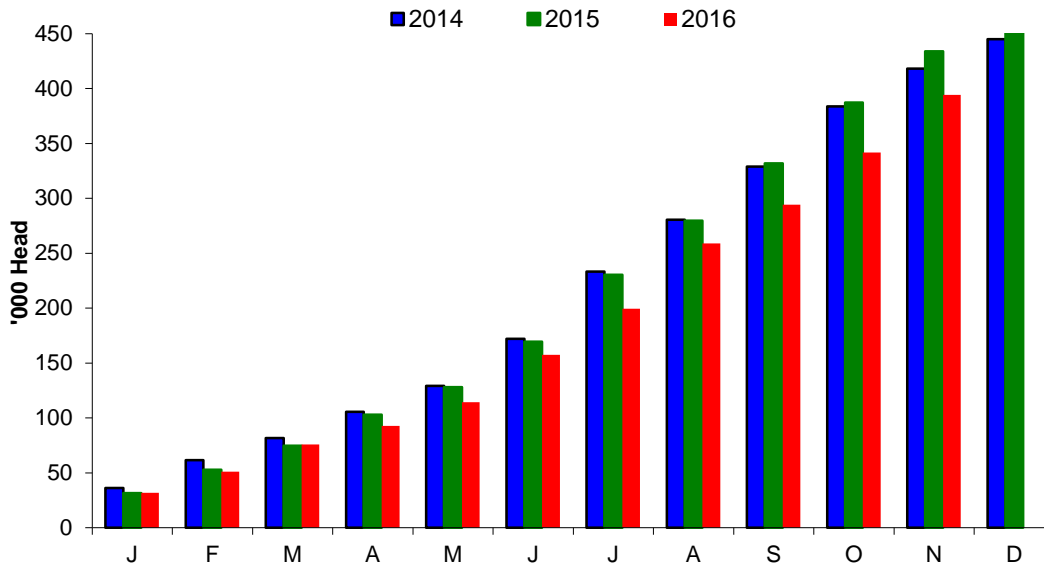
### Sheep Prices

#### Average Deadweight NI Hogget / Lamb Price

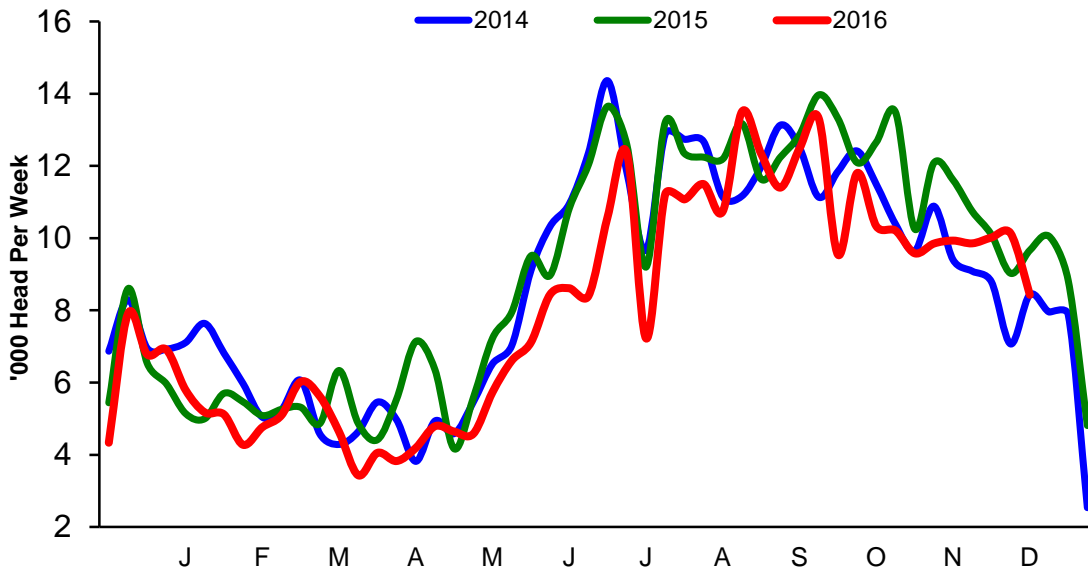


### Sheep Slaughterings

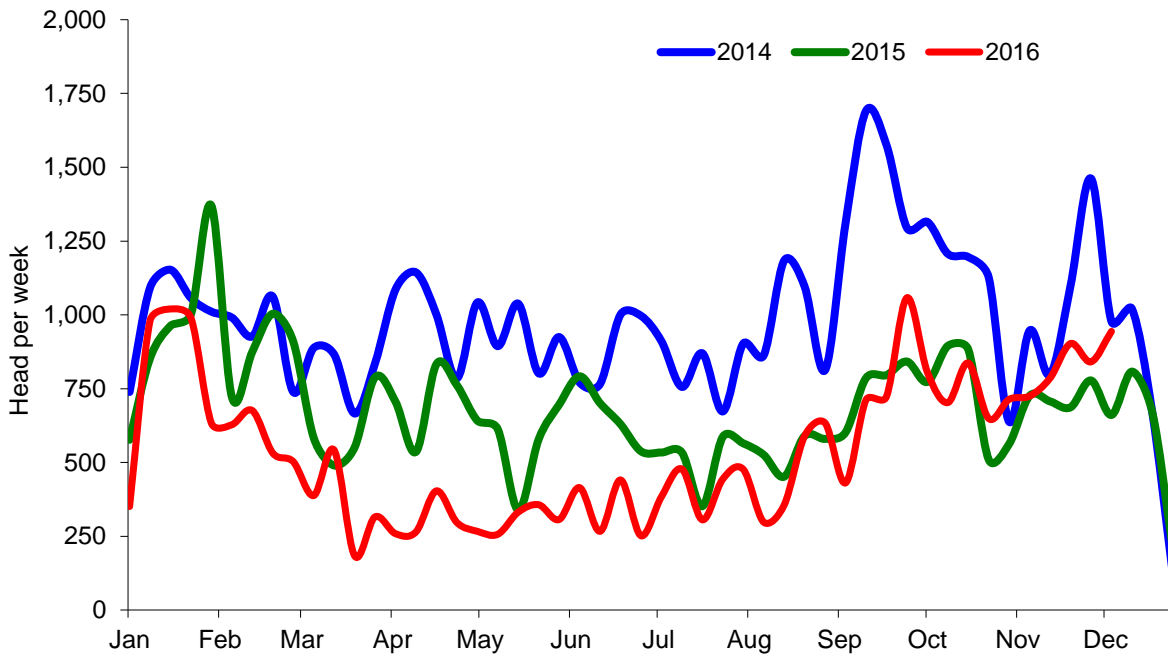
#### Cumulative Lamb & Hogget Slaughterings



### Total Weekly Lamb & Hogget Slaughtering



### Total Weekly Ewe and Ram Slaughtering



**Market Information November 2016**  
**Page 8**

<b>NI CATTLE AND SHEEP SLAUGHTERINGS FOR THE FOODCHAIN</b>						
	<b>November</b>			<b>Year to Date</b>		
	<b>(5 weeks ended 03/12/16)</b>			<b>(35 weeks ended 03/12/16)</b>		
	<b>Nov-15</b>	<b>Nov-16</b>	<b>% Change</b>	<b>2015</b>	<b>2016</b>	<b>Change</b>
<b>CATTLE</b>						
Steers	19,527	17,345	-11%	108,696	107,834	-1%
Heifers	11,733	12,494	+6%	73,832	73,881	+0%
Young Bulls / Calves	2,329	3,013	+29%	21,000	26,048	+24%
<b>Total Prime Cattle</b>	<b>33,589</b>	<b>32,852</b>	<b>-2%</b>	<b>203,528</b>	<b>207,763</b>	<b>+2%</b>
Calves	664	845	+27%	4,271	5,088	+0%
Cows	11,945	13,342	+12%	59,438	68,728	+16%
Mature Bulls	567	467	-18%	2,822	3,047	+8%
<b>Total Cattle</b>	<b>46,765</b>	<b>47,506</b>	<b>+2%</b>	<b>270,059</b>	<b>284,626</b>	<b>+5%</b>
<b>SHEEP</b>						
Lambs & Hoggets	53,558	48,369	-10%	359,242	318,426	-11%
Ewes & Rams	3,461	4,199	+21%	22,635	18,660	-18%
<b>Total Sheep</b>	<b>57,019</b>	<b>52,568</b>	<b>-8%</b>	<b>381,877</b>	<b>337,086</b>	<b>-12%</b>

The above figures are provisional; any amendments will be incorporated in the cumulative data (source DAERA).

<b>NI BEEF AND SHEEPMET PRODUCTION - FOODCHAIN</b>						
	<b>November</b>			<b>Year to Date</b>		
	<b>(5 weeks ended 03/12/16)</b>			<b>(35 weeks ended 03/12/16)</b>		
	<b>Nov-15</b>	<b>Nov-16</b>	<b>% Change</b>	<b>2015</b>	<b>2016</b>	<b>Change</b>
<b>BEEF</b>						
Steers	7,008	6,032	-14%	38,544	37,982	-1%
Heifers	3,793	3,917	+3%	23,635	23,330	-1%
Young Bulls	797	972	+22%	7,164	8,580	+20%
<b>Total Prime Beef</b>	<b>11,598</b>	<b>10,922</b>	<b>-6%</b>	<b>69,344</b>	<b>69,892</b>	<b>+1%</b>
Calves	139	172	+24%	912	1,069	+17%
Cows	3,655	3,863	+6%	18,221	20,486	+12%
Mature Bulls	259	221	-15%	1,280	1,403	+10%
<b>Total Beef</b>	<b>15,651</b>	<b>15,177</b>	<b>-3%</b>	<b>89,758</b>	<b>92,852</b>	<b>+3%</b>
<b>SHEEPMET</b>						
Lambs & Hoggets	1,167	1,046	-10%	7,731	6,721	-43%
Ewes & Rams	93	111	+19%	648	528	-61%
<b>Total Sheepmeat</b>	<b>1,260</b>	<b>1,156</b>	<b>-8%</b>	<b>1,135</b>	<b>621</b>	<b>-45%</b>

The above figures are provisional; any amendments will be incorporated in the cumulative data (source DAERA).



**Market Information November 2016**  
**Page 9**

**Total Carcase Weight Produced for the Food Chain**  
**Year-to-Date (tonnes – t.)**

Month	Prime Cattle		Cows & Bulls		Lambs/Hoggets		Ewes & Rams	
	2015	2016	2015	2016	2015	2016	2015	2016
January	10,829	9,924	2,569	2,772	712	675	127	107
February	8,919	8,906	2,085	2,334	476	422	92	61
March	9,199	10,704	1,882	2,466	482	551	66	47
April	7,850	8,617	1,564	2,188	493	367	79	37
May	8,380	7,577	1,518	1,869	500	465	62	38
June	8,876	9,789	2,148	2,785	1,064	916	103	54
July	7,214	6,644	2,122	2,407	1,038	868	60	51
August	8,904	9,014	3,235	2,915	1,304	1,230	79	66
September	7,778	8,248	2,326	2,612	1,121	982	86	92
October	8,745	9,082	2,675	3,030	1,043	848	86	80
November	11,598	10,922	3,914	4,084	1,167	1,046	93	111
December								
<b>Total</b>	<b>98,291</b>	<b>99,427</b>	<b>26,039</b>	<b>29,462</b>	<b>9,401</b>	<b>8,369</b>	<b>932</b>	<b>742</b>
<b>Change (t.)</b>	<b>1,136</b>		<b>3,423</b>		<b>-1,031</b>		<b>-190</b>	
<b>% Change</b>	<b>1.16%</b>		<b>13.15%</b>		<b>-10.97%</b>		<b>-20.39%</b>	

*\*excludes calves*

**Change in Throughput / Production**  
**Last 4 weeks 2015/2016**

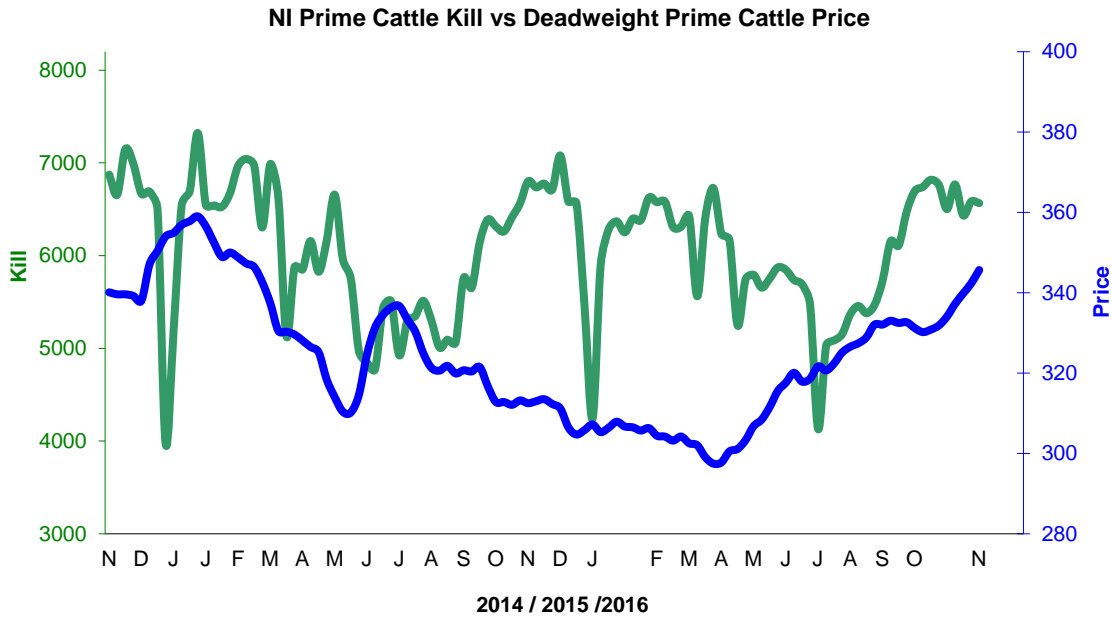
**Change in Throughput / Production 2015/2016**

**November**

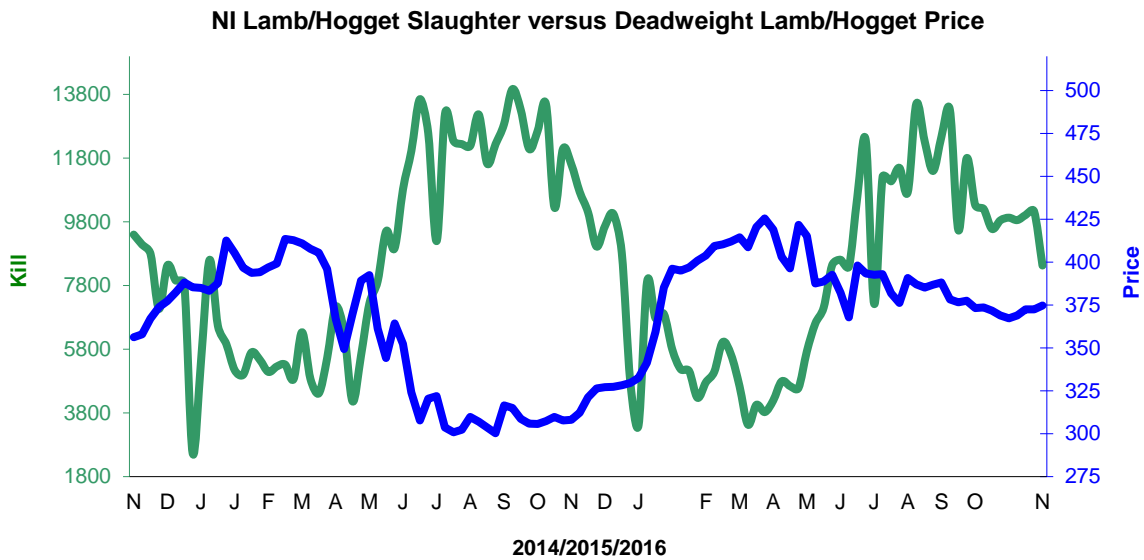
2015/2016	Number	Tonnage	ACW Kg
Prime	-2.2%	-5.8%	-13.00
Cows	11.7%	5.7%	-16.47
<b>Total</b>	<b>1.6%</b>	<b>-3.0%</b>	<b>-15.39</b>
Lamb	-9.7%	-10.4%	-0.17
Ewes and Rams	21.3%	19.0%	-0.46
<b>Total Sheep</b>	<b>-7.8%</b>	<b>-8.2%</b>	<b>-0.11</b>

## Supply and Price

### NI Clean Cattle Kill vs. Average Clean Cattle Price



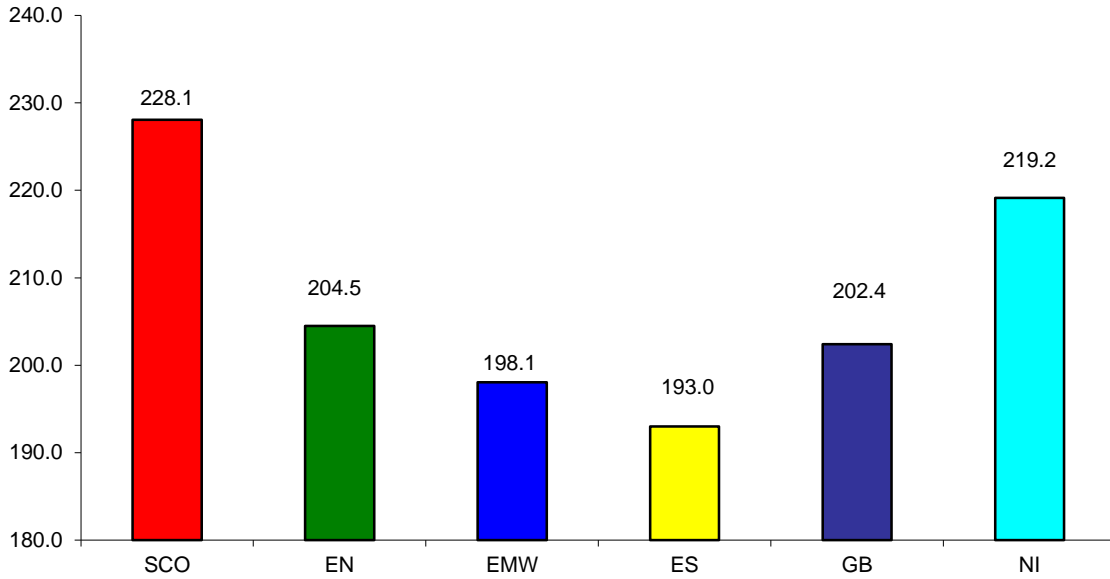
### NI Lamb/Hogget Kill vs. Average Lamb / Hogget Price



Green	Supply (Kill)
Blue	Price

BRITISH ISLES COMPARISONS

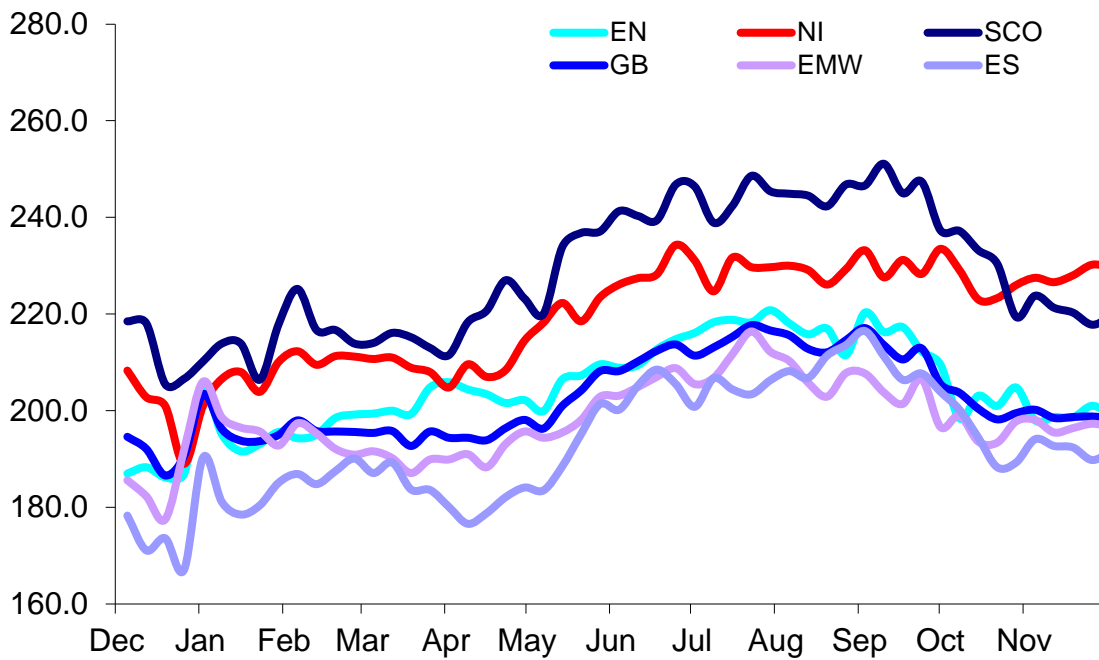
UK Average Cow Prices  
52 Weeks to 03 December 2016



SCO	Scotland
EN	England North
EMW	England Midlands and Wales
ES	England South
NI	Northern Ireland
GB	Great Britain

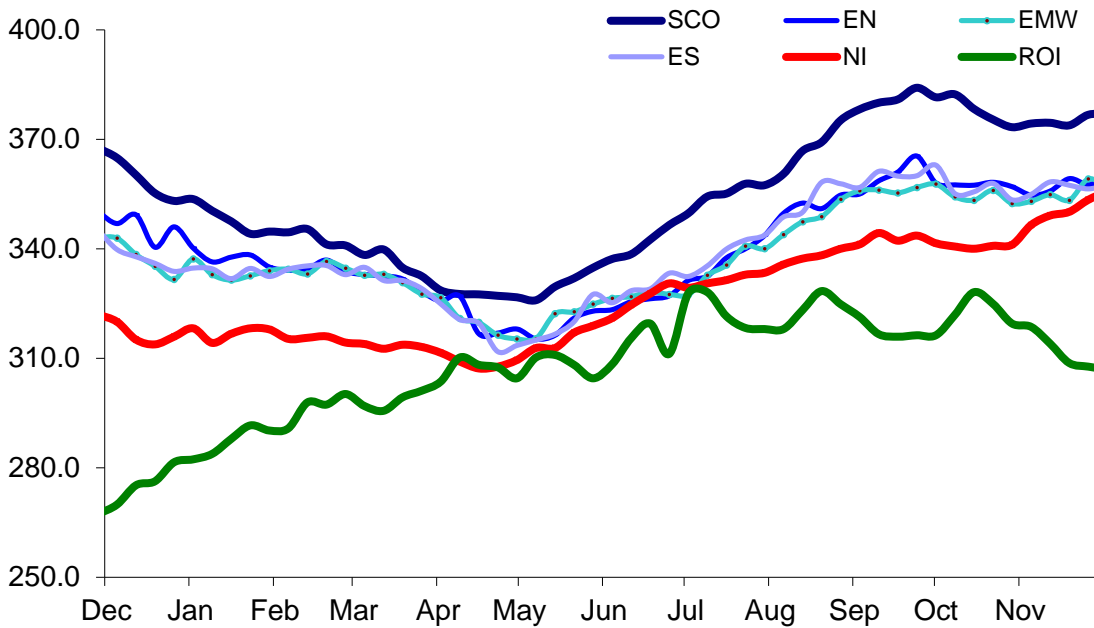
Prices relate to UK Dressing Specification

Weekly UK Cow Prices  
52 Weeks to 03 December 2016



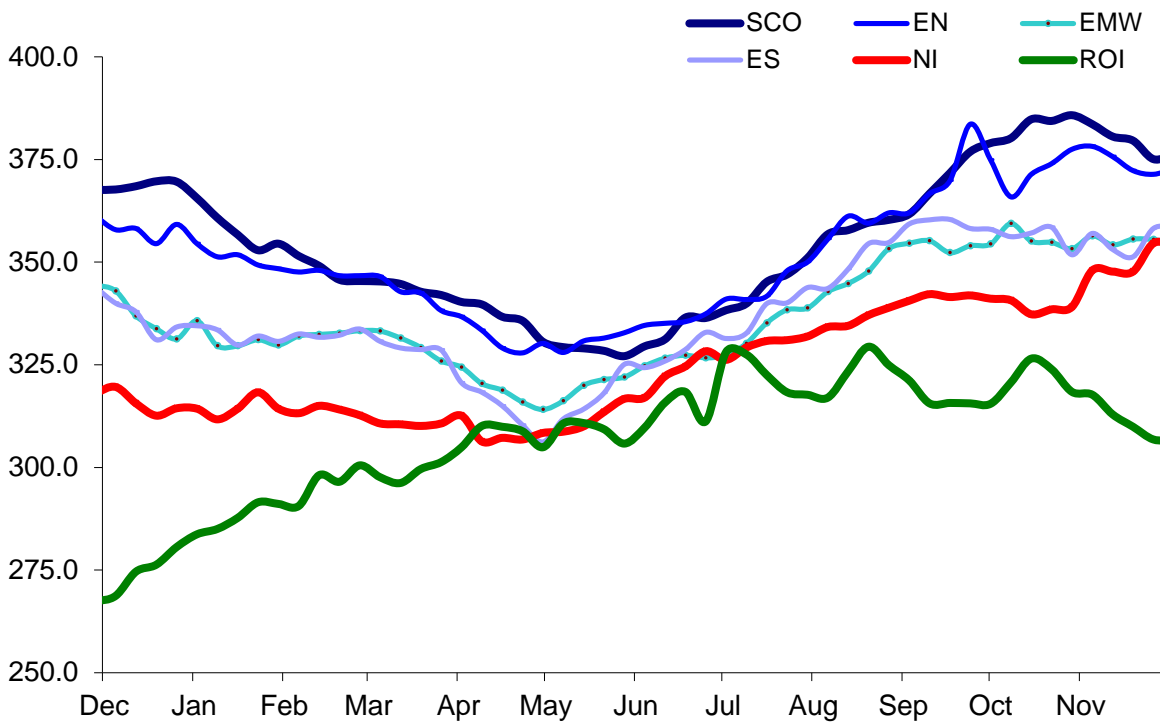
Prices relate to UK Dressing Specification

British Isles R3 Steer Price  
52 Weeks to 03 December 2016



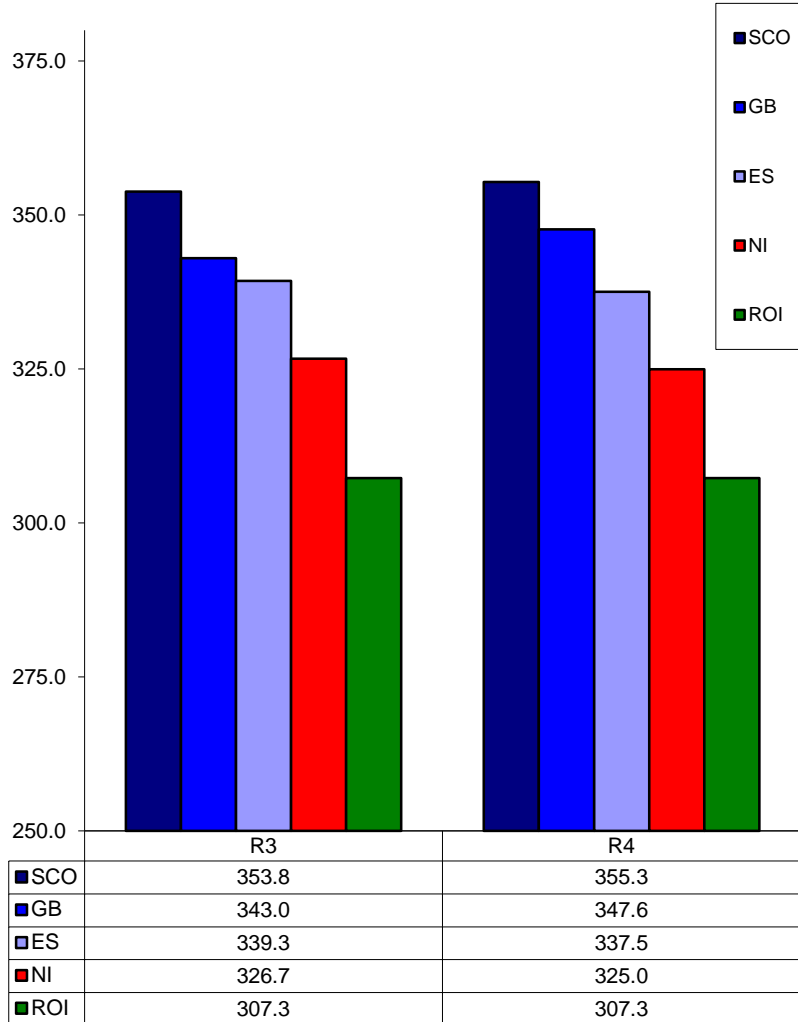
Prices relate to UK Dressing Specification

British Isles R4 Steer Price  
52 Weeks to 03 December 2016



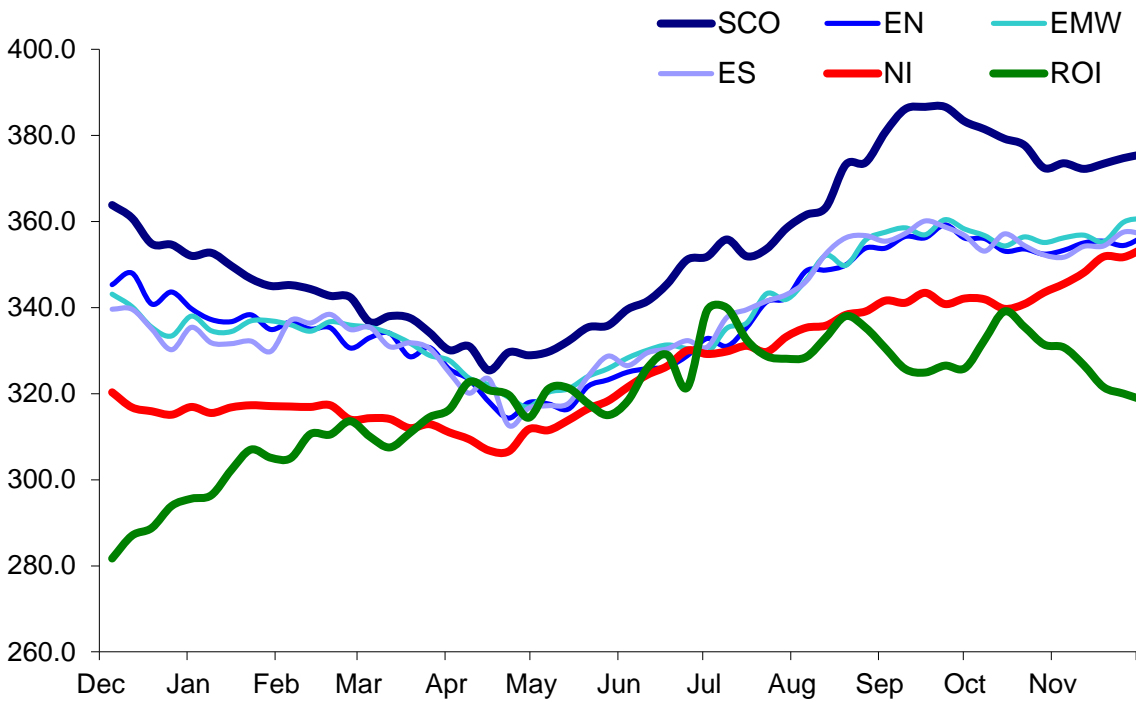
Prices relate to UK Dressing Specification

**British Isles Average R3 and R4 Steer price**  
**52 Weeks to 03 December 2016**



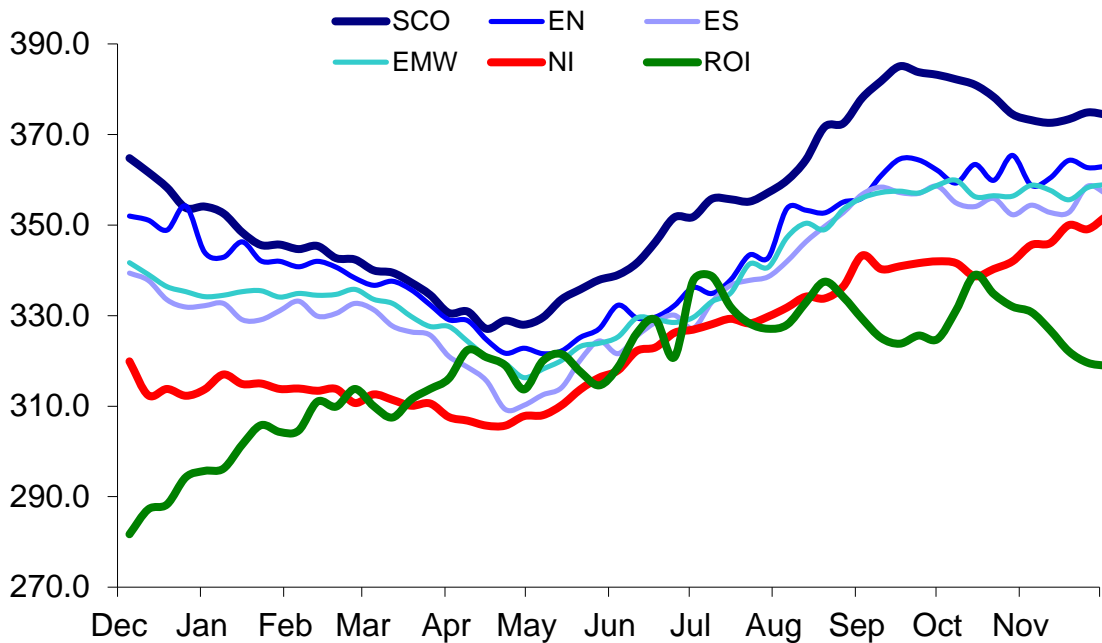
Prices relate to UK Dressing Specification

British Isles R3 Heifer Price  
52 Weeks to 03 December 2016



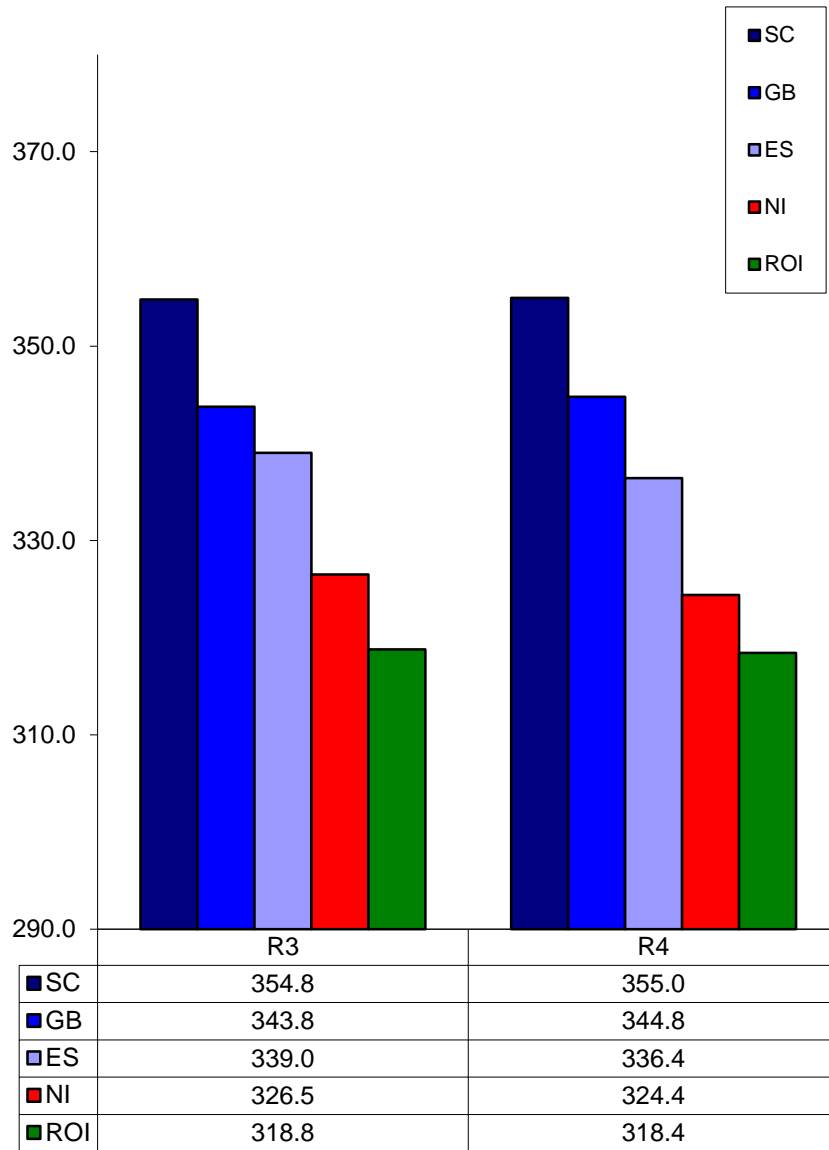
Prices relate to UK Dressing Specification

British Isles R4 Heifer Price  
52 Weeks to 03 December 2016



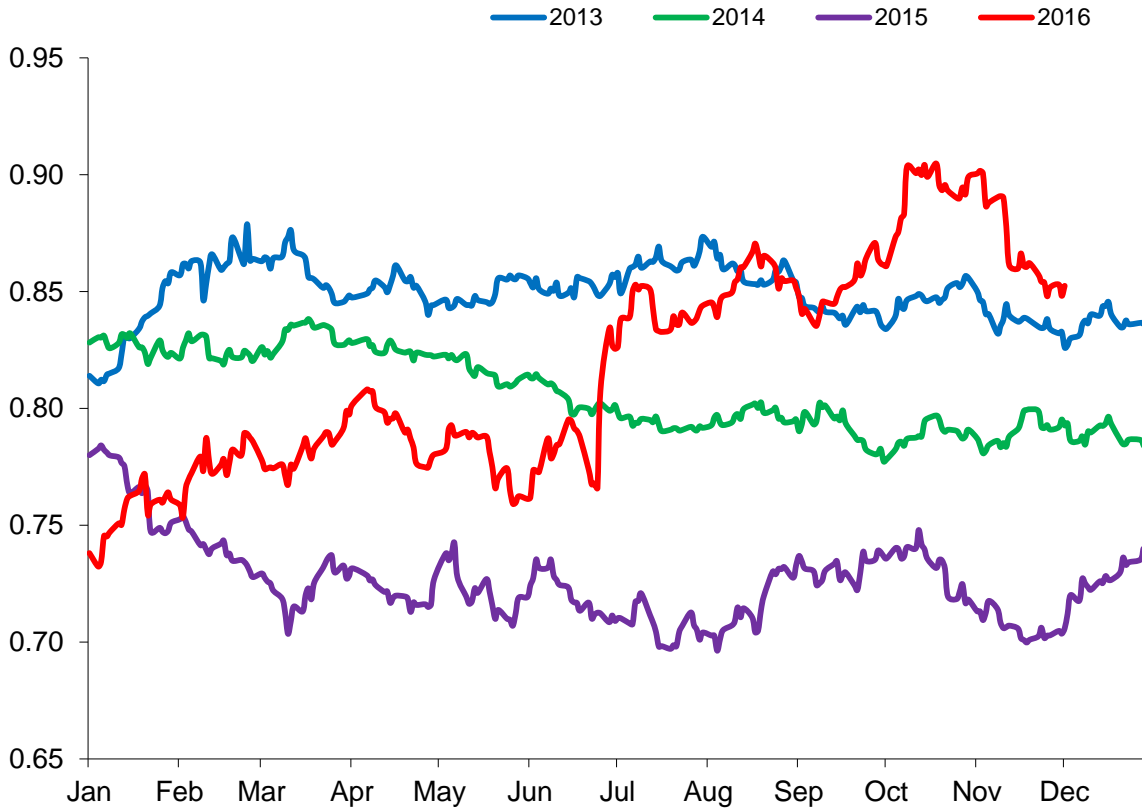
Prices relate to UK Dressing Specification

**British Isles Average R3 and R4 Heifer price**  
**52 Weeks to 03 December 2016**



Prices relate to UK Dressing Specification

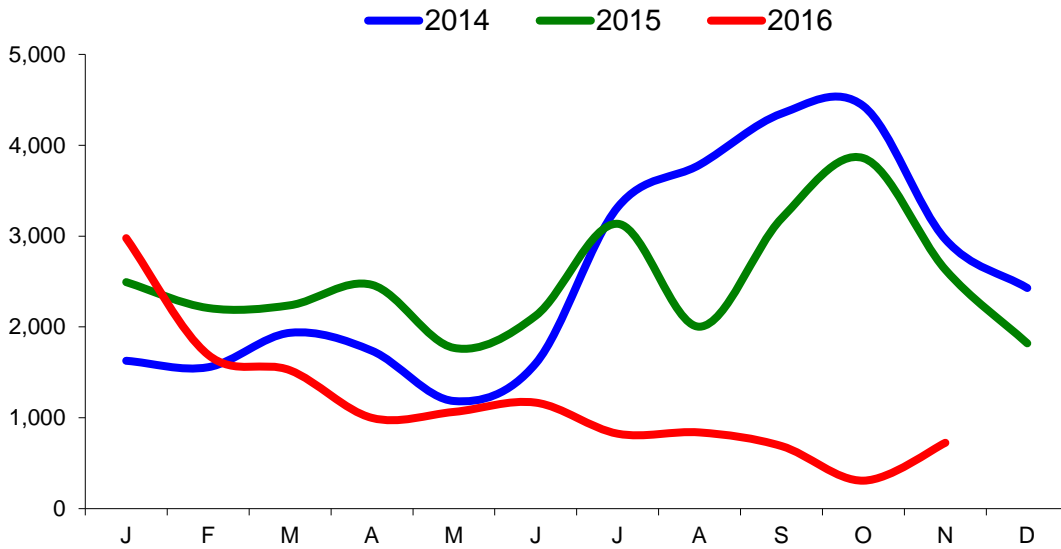
Exchange Rate £ / Euro  
01 January 2013 – 30 November 2016



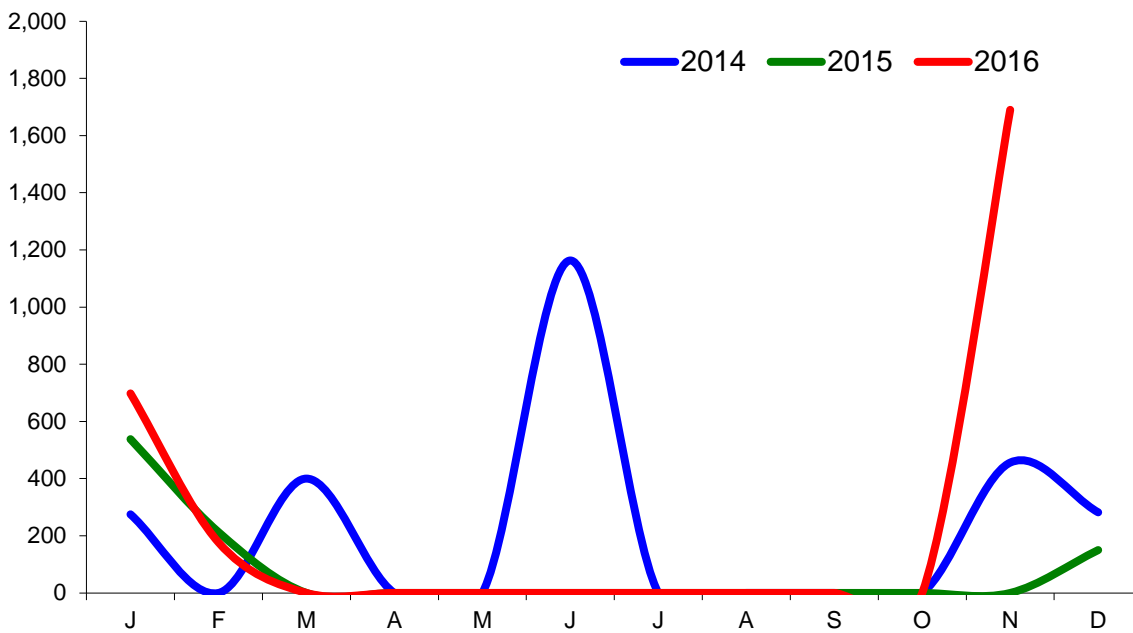


### Imports

#### Monthly Live Imports of Cattle into NI for Direct Slaughter From ROI and GB Combined

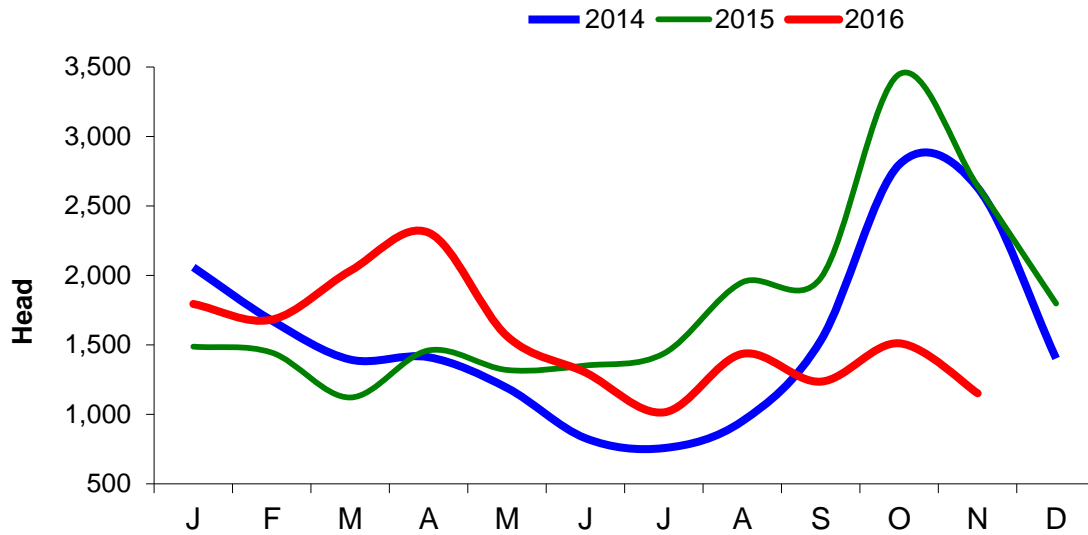


#### Monthly Live Imports of Sheep into NI for Direct Slaughter From ROI and GB Combined



Exports

Monthly Live Exports of Cattle from NI into ROI and GB



Monthly Live Exports of Sheep from NI into ROI and GB

