

**LMC**

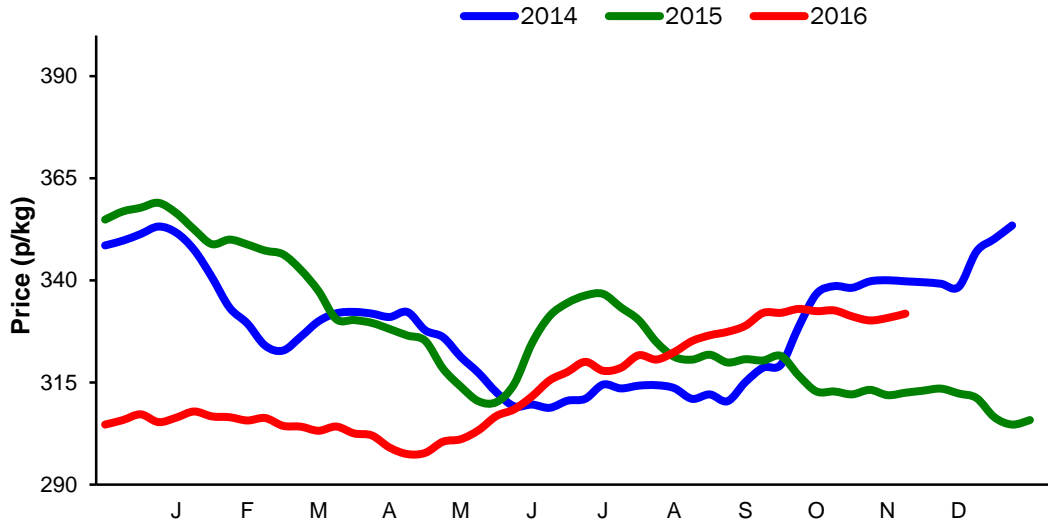
**Monthly Economic Review  
October 2016**

## Contents

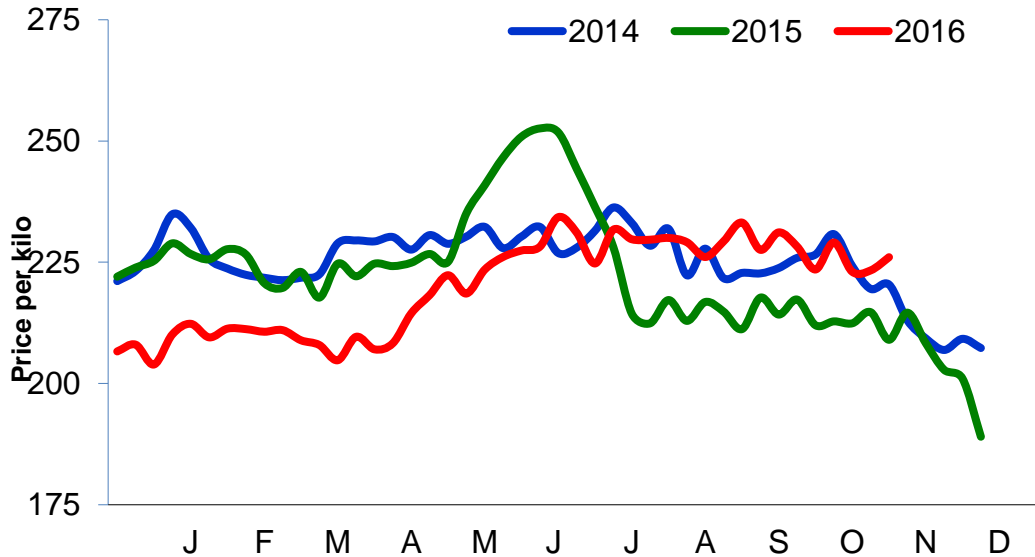
Contents .....	2
Cattle Prices.....	4
Average NI Clean Cattle Price.....	4
Average NI Cow Price .....	4
Cattle Slaughtering.....	5
NI Clean Cattle Slaughtering – Cumulative .....	5
NI Weekly Clean Cattle Slaughtering .....	5
NI Weekly Cow Slaughtering.....	5
Sheep Prices.....	6
Average NI Lamb / Hogget Price .....	6
Sheep Slaughtering.....	7
Cumulative Lamb & Hogget Slaughtering.....	7
Total Weekly Lamb & Hogget Slaughtering.....	7
Total Weekly Ewe and Ram Slaughtering .....	7
Total Carcase Weight Produced for the Food Chain.....	8
Change in Throughput / Production .....	9
Supply and Price.....	10
NI Lamb/Hogget Kill vs. Average Lamb / Hogget Price .....	10
NI Clean Cattle Kill vs. Average Clean Cattle Price.....	10
British Isles Price Comparisons .....	11
UK Average Cow Prices .....	11
Weekly UK Cow Prices .....	11
British Isles R3 Steer Price .....	12
British Isles R4 Steer Price .....	12
British Isles Average R3 and R4 Steer price .....	13
British Isles R3 Heifer Price .....	14
British Isles R4 Heifer Price .....	14
British Isles Average R3 and R4 Heifer price .....	15
Exchange Rate £ / Euro.....	16
Imports.....	17
Monthly Live Imports of Cattle into NI for Direct Slaughter.....	17
Monthly Live Imports of Sheep into NI for Direct Slaughter.....	17
Exports.....	18
Monthly Live Exports of Cattle from NI into Rol and GB.....	18
Monthly live Exports of Sheep from NI into Rol and GB.....	18

Cattle Prices

Average NI Clean Cattle Price

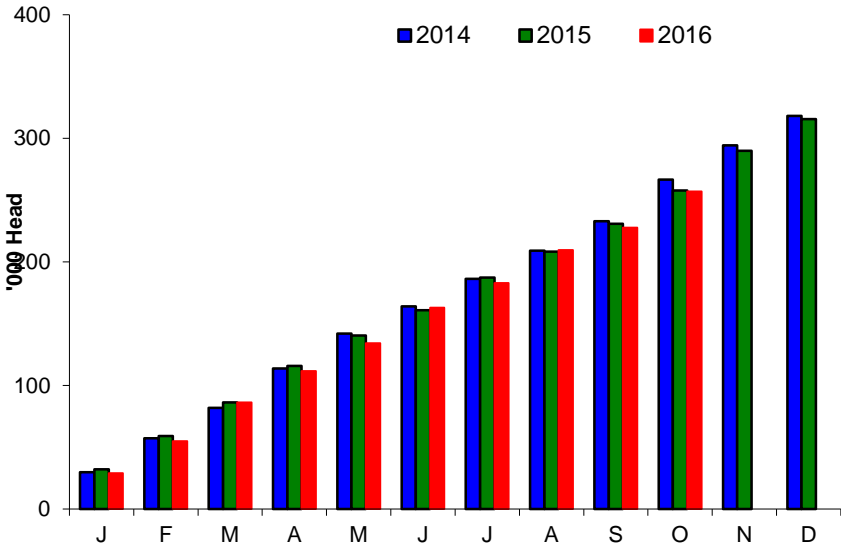


Average NI Cow Price

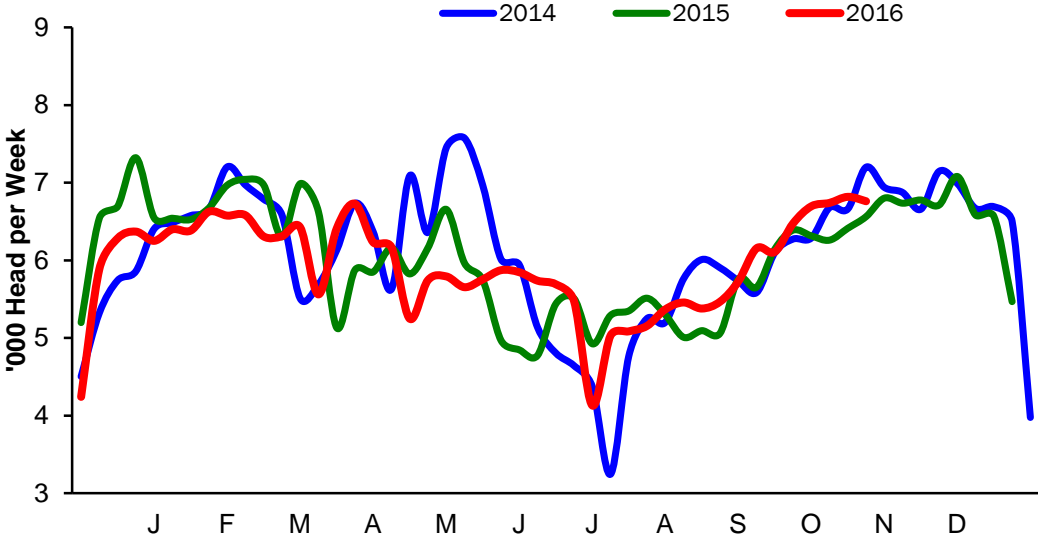


Cattle Slaughtering

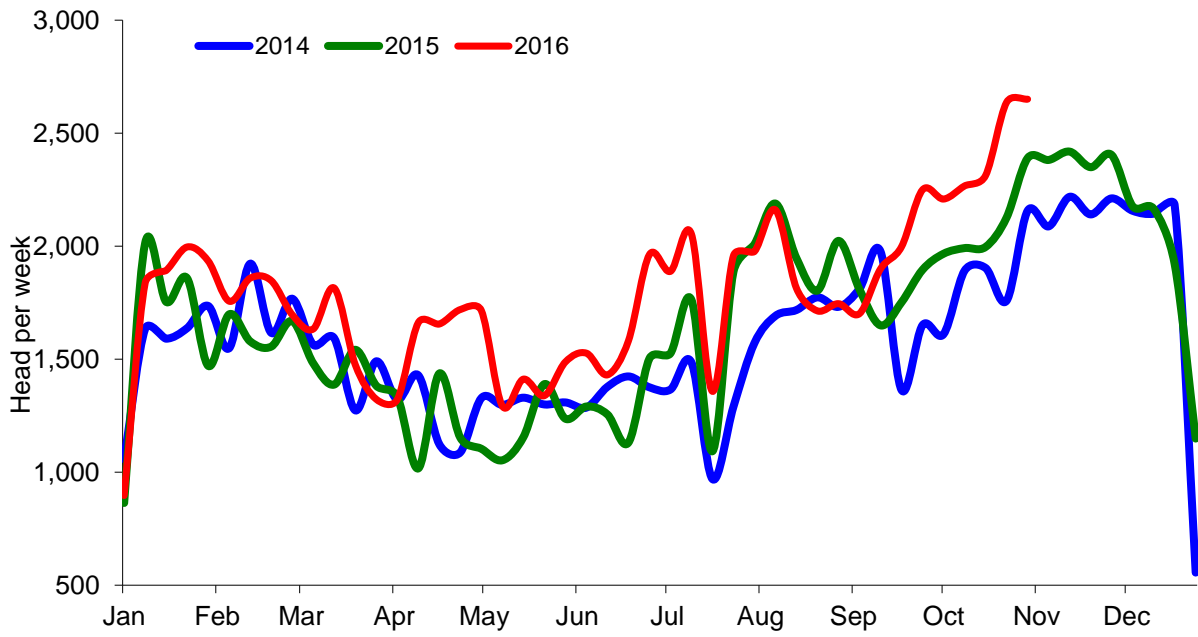
NI Clean Cattle Slaughtering – Cumulative



NI Weekly Clean Cattle Slaughtering

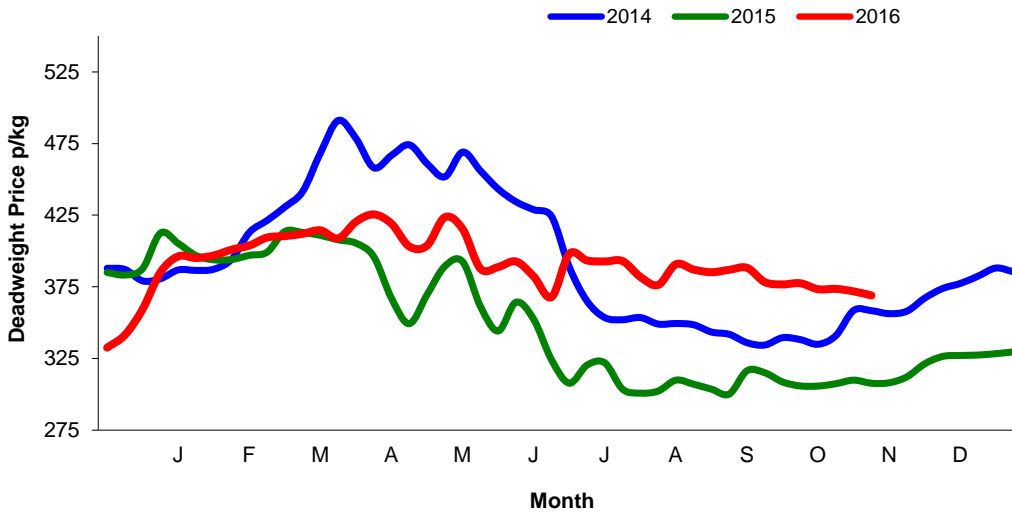


NI Weekly Cow Slaughtering



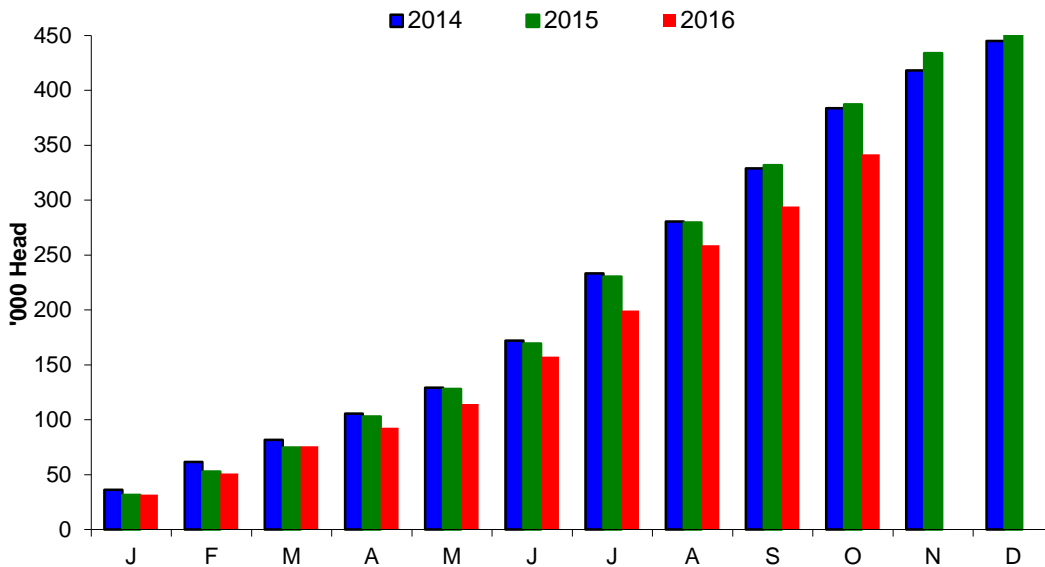
### Sheep Prices

#### Average Deadweight NI Hogget / Lamb Price

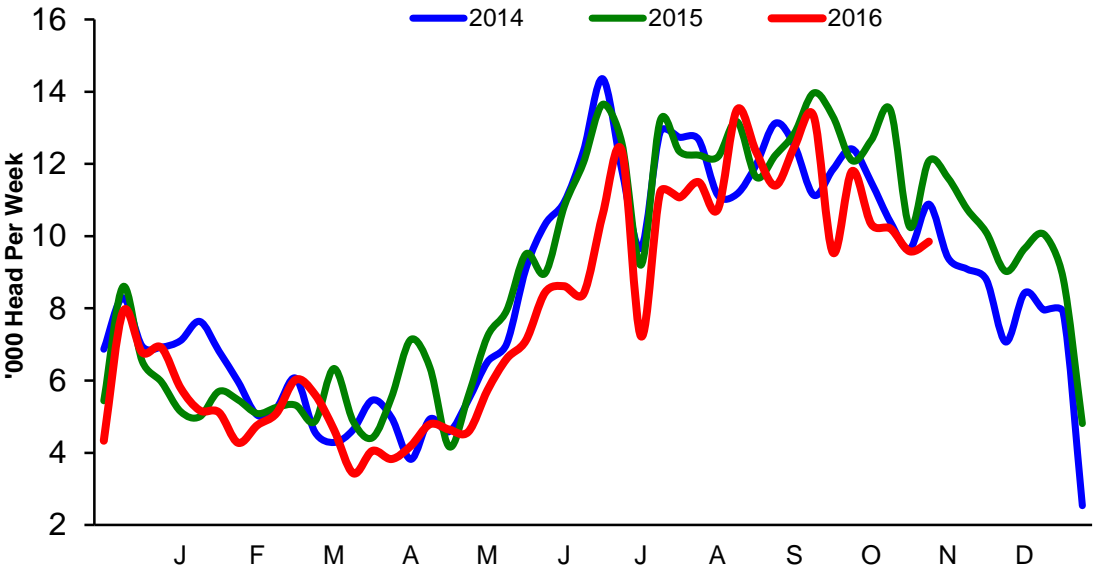


### Sheep Slaughtering

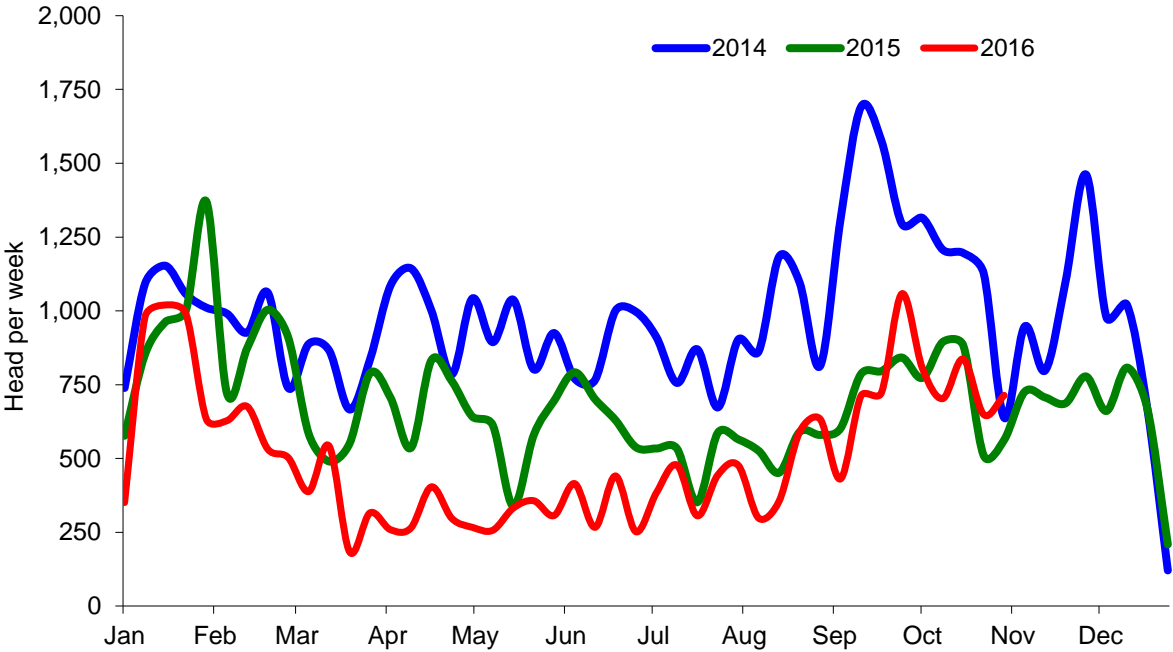
#### Cumulative Lamb & Hogget Slaughtering



### Total Weekly Lamb & Hogget Slaughtering



### Total Weekly Ewe and Ram Slaughtering



## Market Information October 2016

### Page 8

NI CATTLE AND SHEEP SLAUGHTERINGS FOR THE FOODCHAIN						
	October			Year to Date		
	(4 weeks ended 29/10/16)			(30 weeks ended 29/10/16)		
	Oct-15	Oct-16	%	2015	2016	Change
<b>CATTLE</b>						
Steers	14,770	15,584	+6%	89,169	90,489	+1%
Heifers	8,669	9,153	+6%	62,099	61,387	-1%
Young Bulls / Calves	1,938	2,278	+18%	18,671	23,035	+23%
<b>Total Prime Cattle</b>	<b>25,377</b>	<b>27,015</b>	<b>+6%</b>	<b>169,939</b>	<b>174,911</b>	<b>+3%</b>
Calves	533	648	+22%	3,607	4,243	+0%
Cows	8,083	9,868	+22%	47,493	55,386	+17%
Mature Bulls	428	374	-13%	2,255	2,580	+14%
<b>Total Cattle</b>	<b>34,421</b>	<b>37,905</b>	<b>+10%</b>	<b>223,294</b>	<b>237,120</b>	<b>+6%</b>
<b>SHEEP</b>						
Lambs & Hoggets	48,491	39,970	-18%	305,684	270,057	-12%
Ewes & Rams	3,061	2,903	-5%	19,174	14,461	-25%
<b>Total Sheep</b>	<b>51,552</b>	<b>42,873</b>	<b>-17%</b>	<b>324,858</b>	<b>284,518</b>	<b>-12%</b>

The above figures are provisional; any amendments will be incorporated in the cumulative data.  
(Source DAERA)

NI BEEF AND SHEEPMEAT PRODUCTION - FOODCHAIN						
	October			Year to Date		
	(4 weeks ended 29/10/16)			(30 weeks ended 29/10/16)		
	Oct-15	Oct-16	%	2015	2016	Change
<b>BEEF</b>						
Steers	5,284	5,466	+3%	31,536	31,949	+1%
Heifers	2,808	2,863	+2%	19,843	19,413	-2%
Young Bulls	653	753	+15%	6,367	7,608	+19%
<b>Total Prime Beef</b>	<b>8,745</b>	<b>9,082</b>	<b>+4%</b>	<b>57,746</b>	<b>58,971</b>	<b>+2%</b>
Calves	113	132	+17%	773	897	+16%
Cows	2,473	2,854	+15%	14,566	16,624	+14%
Mature Bulls	202	176	-13%	1,021	1,183	+16%
<b>Total Beef</b>	<b>10,222</b>	<b>10,985</b>	<b>+7%</b>	<b>74,107</b>	<b>77,675</b>	<b>+5%</b>
<b>SHEEPMEAT</b>						
Lambs & Hoggets	1,043	848	-19%	6,564	5,675	-43%
Ewes & Rams	86	80	-7%	555	417	-61%
<b>Total Sheepmeat</b>	<b>1,129</b>	<b>927</b>	<b>-18%</b>	<b>1,135</b>	<b>621</b>	<b>-45%</b>

The above figures are provisional; any amendments will be incorporated in the cumulative data.  
(Source DAERA).



**Market Information October 2016**  
**Page 9**

**Total Carcase Weight Produced for the Food Chain**  
**Year-to-Date (tonnes – t.)**

Month	Prime Cattle		Cows & Bulls		Lambs/Hoggets		Ewes & Rams	
	2015	2016	2015	2016	2015	2016	2015	2016
January	10,829	9,924	2,569	2,772	712	675	127	107
February	8,919	8,906	2,085	2,334	476	422	92	61
March	9,199	10,704	1,882	2,466	482	551	66	47
April	7,850	8,617	1,564	2,188	493	367	79	37
May	8,380	7,577	1,518	1,869	500	465	62	38
June	8,876	9,789	2,148	2,785	1,064	916	103	54
July	7,214	6,644	2,122	2,407	1,038	868	60	51
August	8,904	9,014	3,235	2,915	1,304	1,230	79	66
September	7,778	8,248	2,326	2,612	1,121	982	86	92
October	8,745	9,082	2,675	3,030	1,043	848	86	80
November								
December								
<b>Total</b>	<b>86,693</b>	<b>88,505</b>	<b>22,125</b>	<b>25,378</b>	<b>8,233</b>	<b>7,323</b>	<b>839</b>	<b>631</b>
<b>Change (t.)</b>	<b>1,812</b>		<b>3,253</b>		<b>-910</b>		<b>-208</b>	
<b>% Change</b>	<b>2.09%</b>		<b>14.70%</b>		<b>-11.05%</b>		<b>-24.77%</b>	

\*excludes calves

**Change in Throughput / Production**  
**Last 4 weeks 2015/2016**

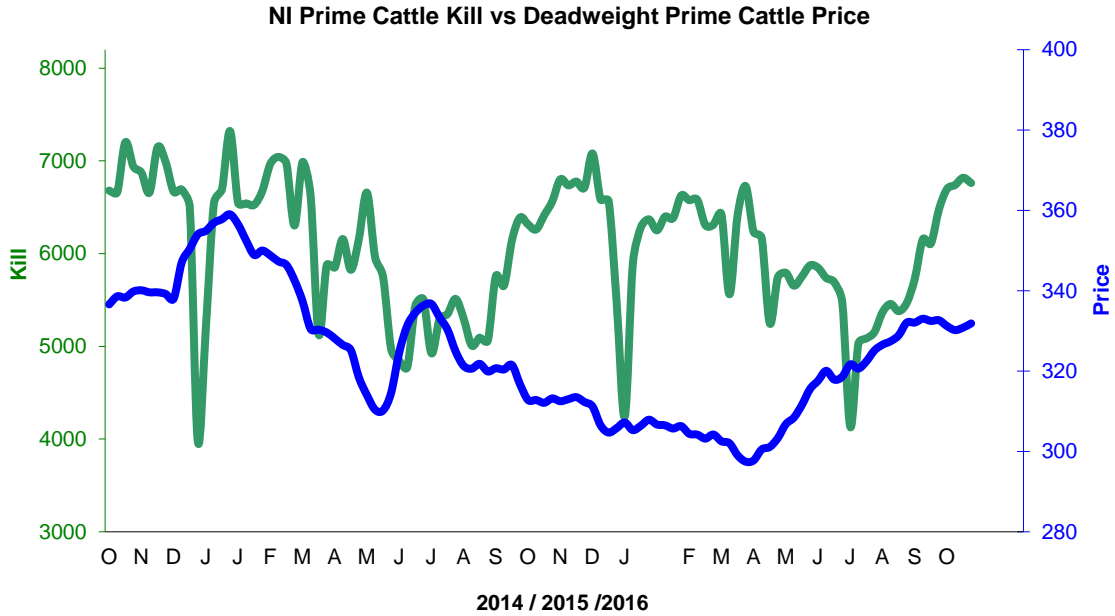
**Change in Throughput / Production 2015/2016**

**October**

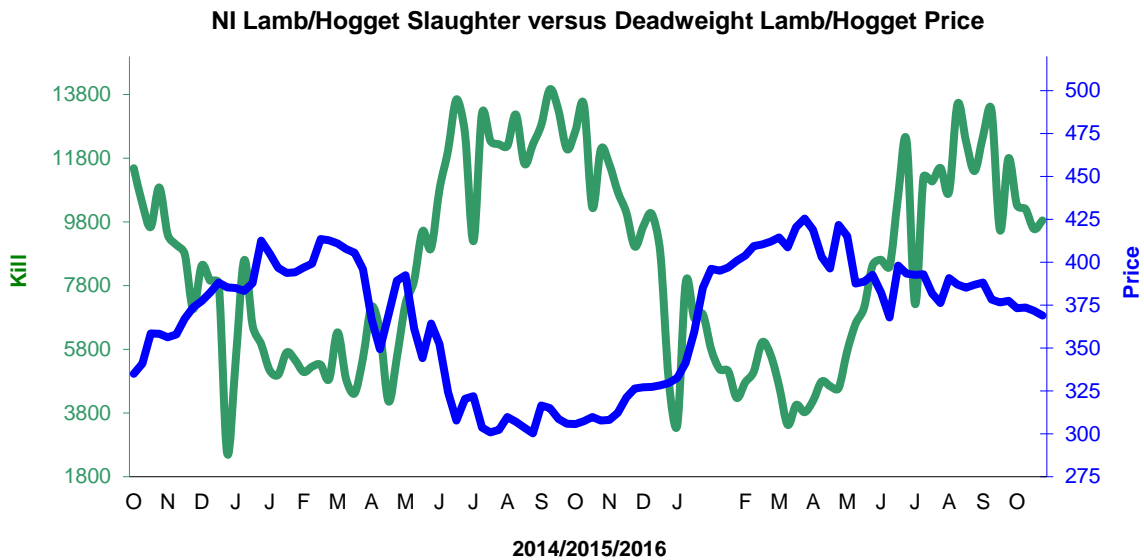
2015/2016	Number	Tonnage	ACW Kg
Prime	6.5%	3.9%	-8.30
Cows	22.1%	15.4%	-16.69
<b>Total</b>	<b>10.1%</b>	<b>6.2%</b>	<b>-12.12</b>
Lamb	-17.6%	-18.8%	-0.32
Ewes and Rams	-5.2%	-6.7%	-0.42
<b>Total Sheep</b>	<b>-16.8%</b>	<b>-17.8%</b>	<b>-0.28</b>

**Supply and Price**

**NI Clean Cattle Kill vs. Average Clean Cattle Price**



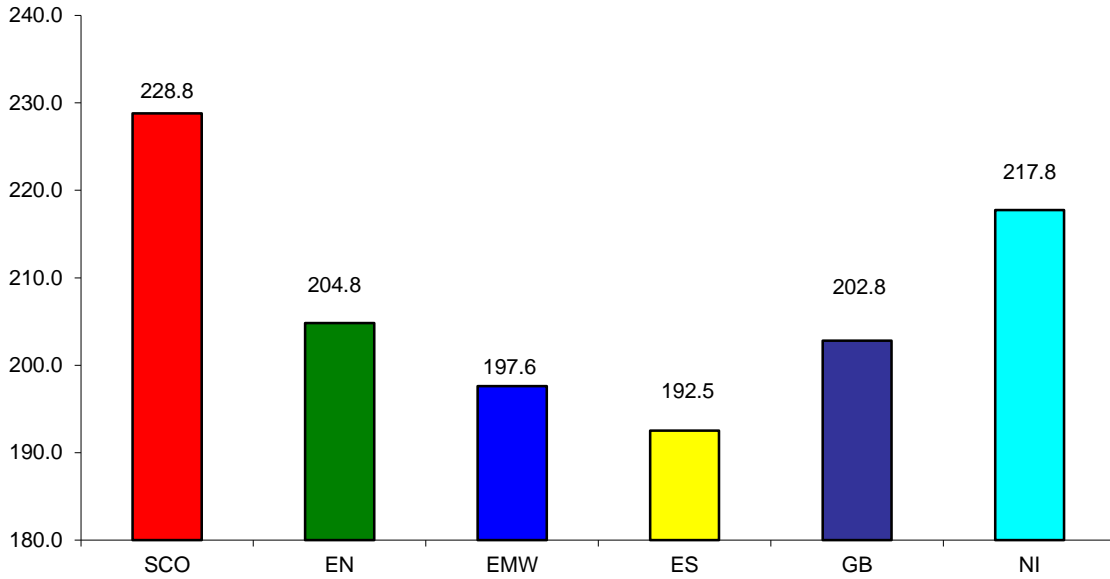
**NI Lamb/Hogget Kill vs. Average Lamb / Hogget Price**



Green	Supply (Kill)
Blue	Price

BRITISH ISLES COMPARISONS

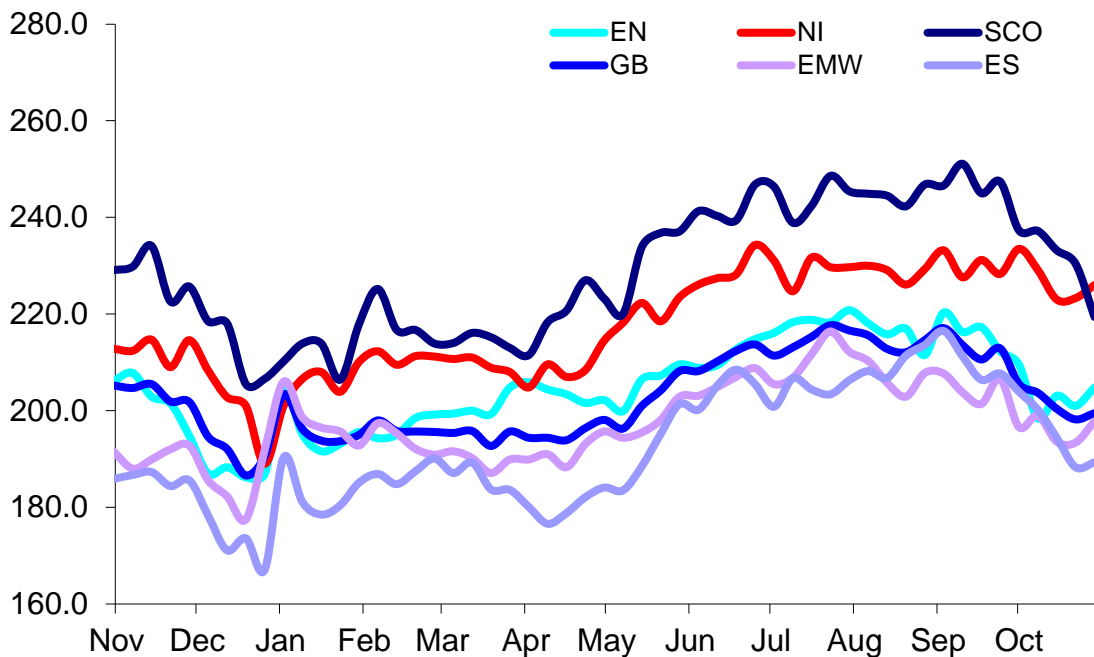
UK Average Cow Prices  
52 Weeks to 29 October 2016



SCO	Scotland
EN	England North
EMW	England Midlands and Wales
ES	England South
NI	Northern Ireland
GB	Great Britain

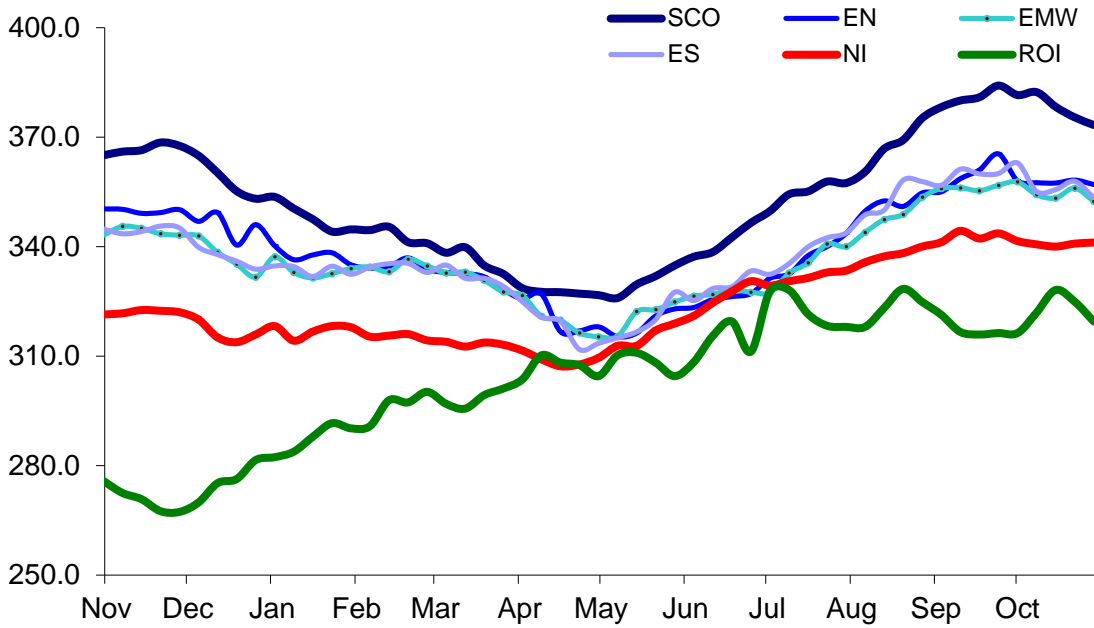
Prices relate to UK Dressing Specification

Weekly UK Cow Prices  
52 Weeks to 29 October 2016



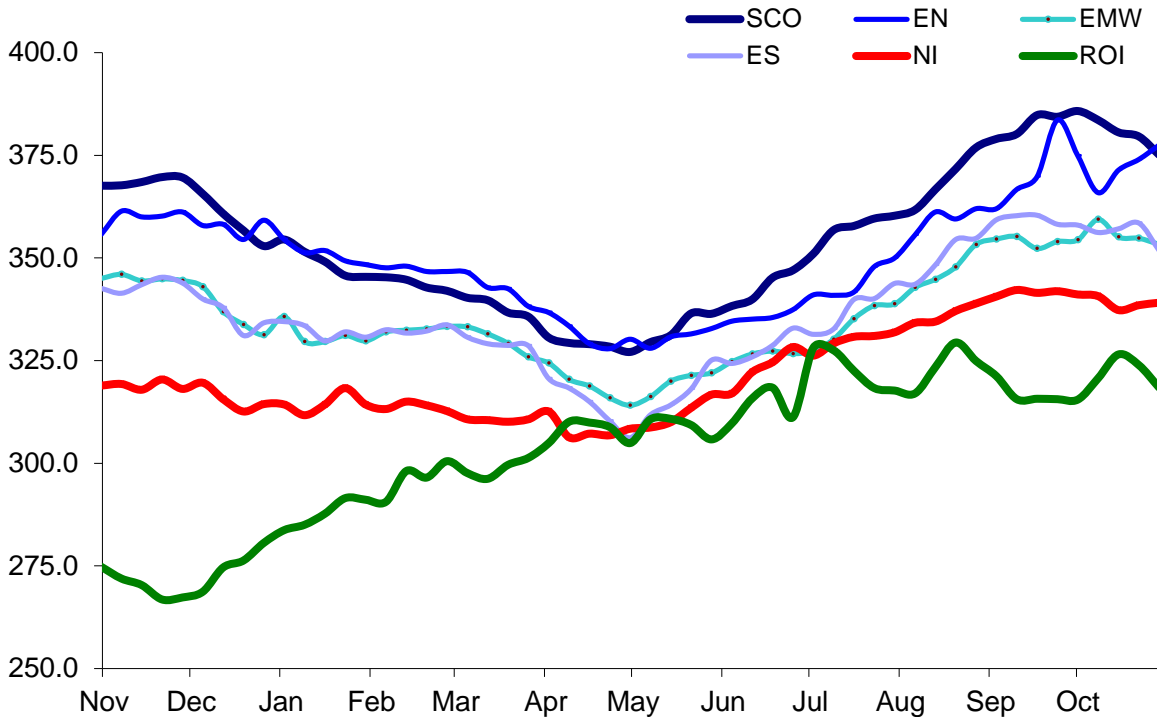
Prices relate to UK Dressing Specification

British Isles R3 Steer Price  
52 Weeks to 29 October 2016



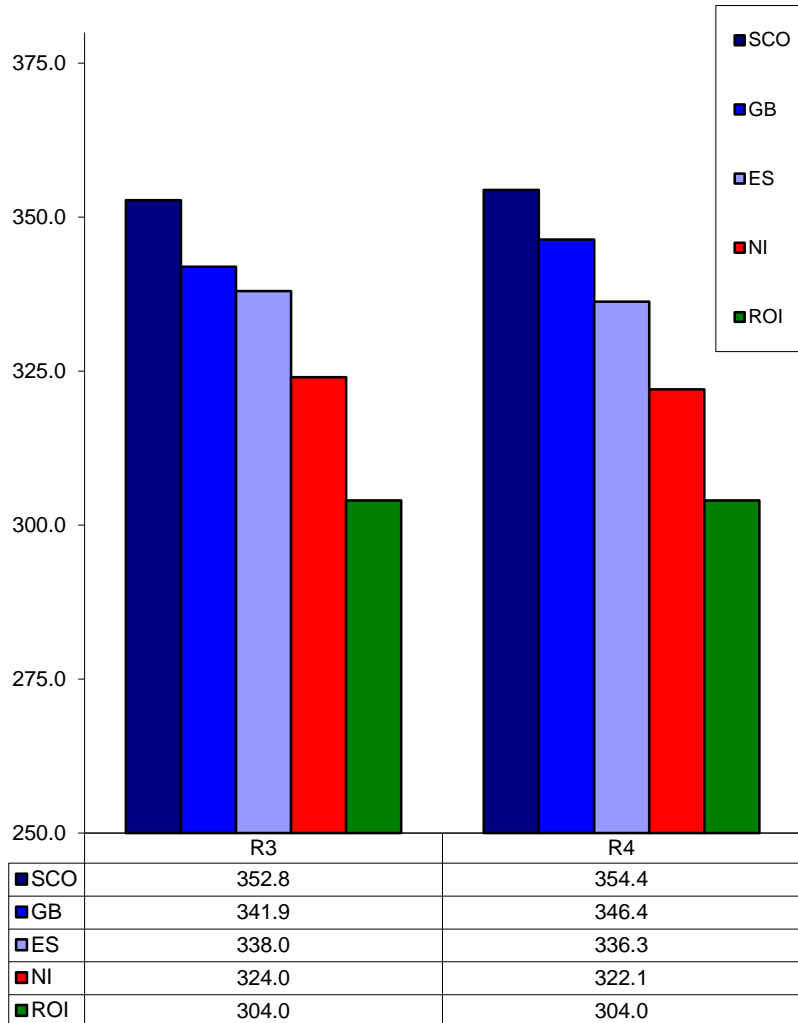
Prices relate to UK Dressing Specification

British Isles R4 Steer Price  
52 Weeks to 29 October 2016



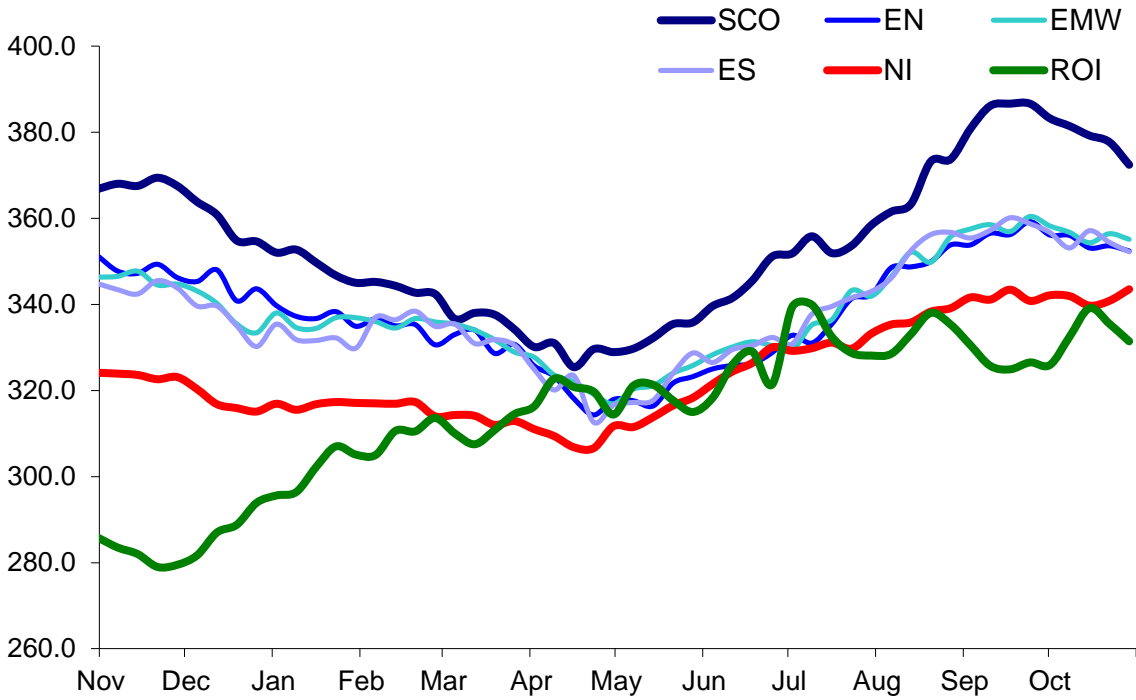
Prices relate to UK Dressing Specification

**British Isles Average R3 and R4 Steer price**  
**52 Weeks to 29 October 2016**



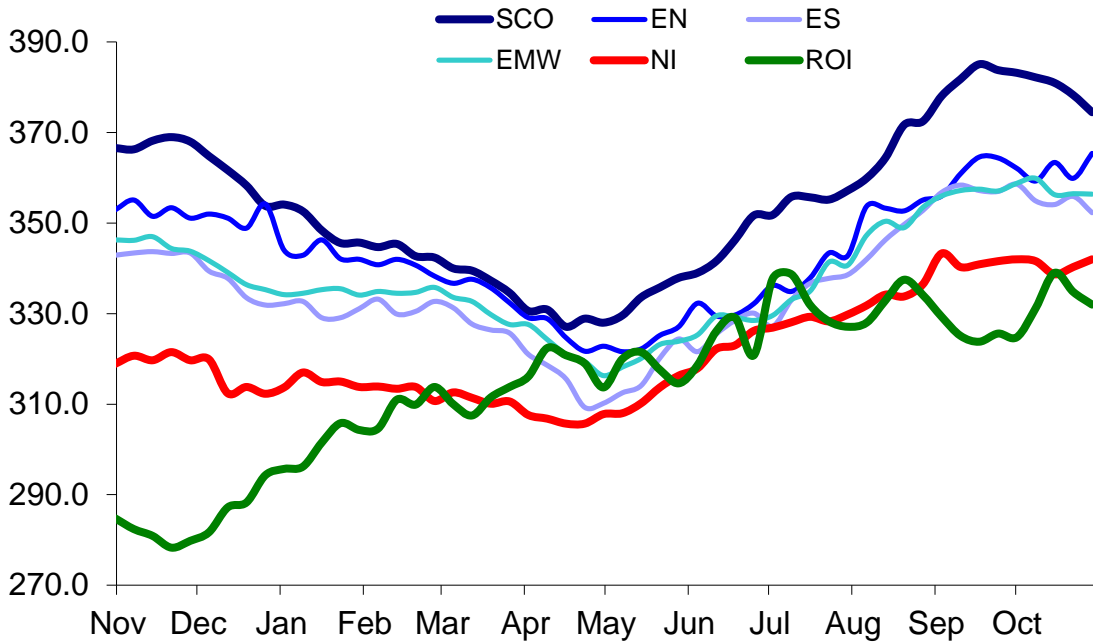
Prices relate to UK Dressing Specification

British Isles R3 Heifer Price  
52 Weeks to 29 October 2016



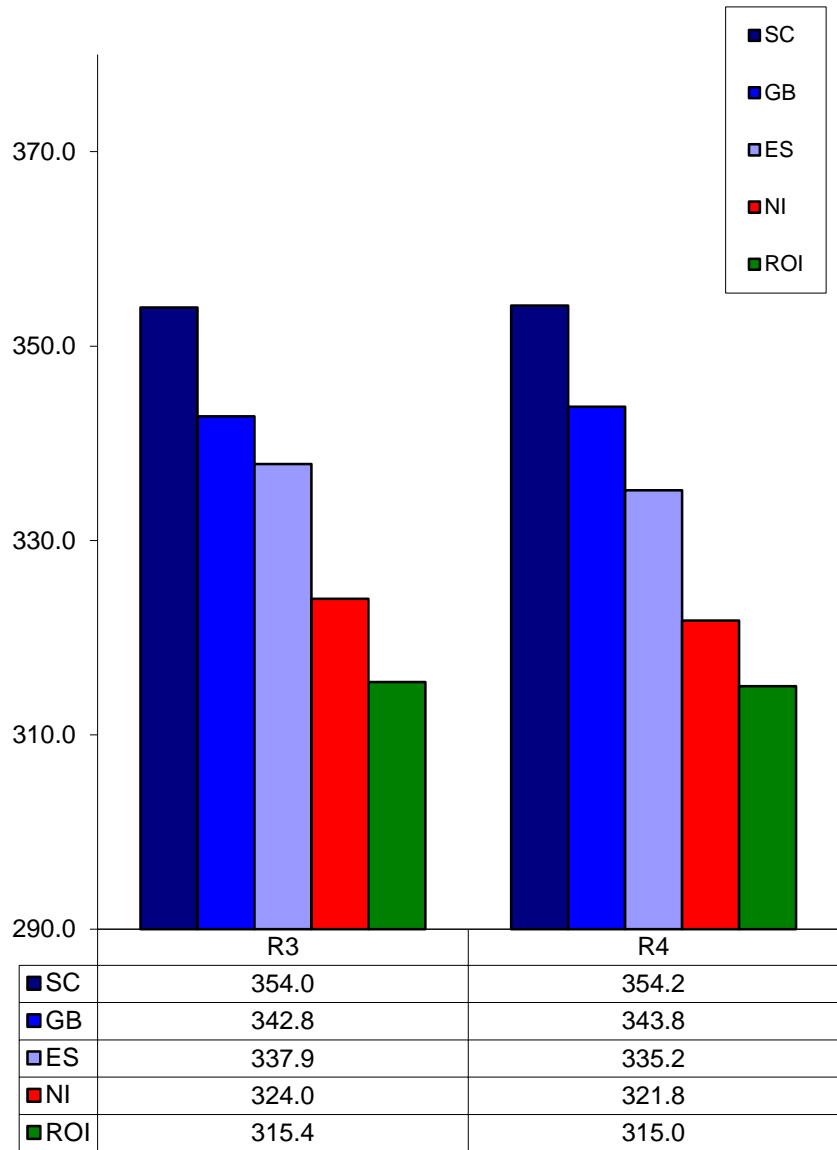
Prices relate to UK Dressing Specification

British Isles R4 Heifer Price  
52 Weeks to 29 October 2016



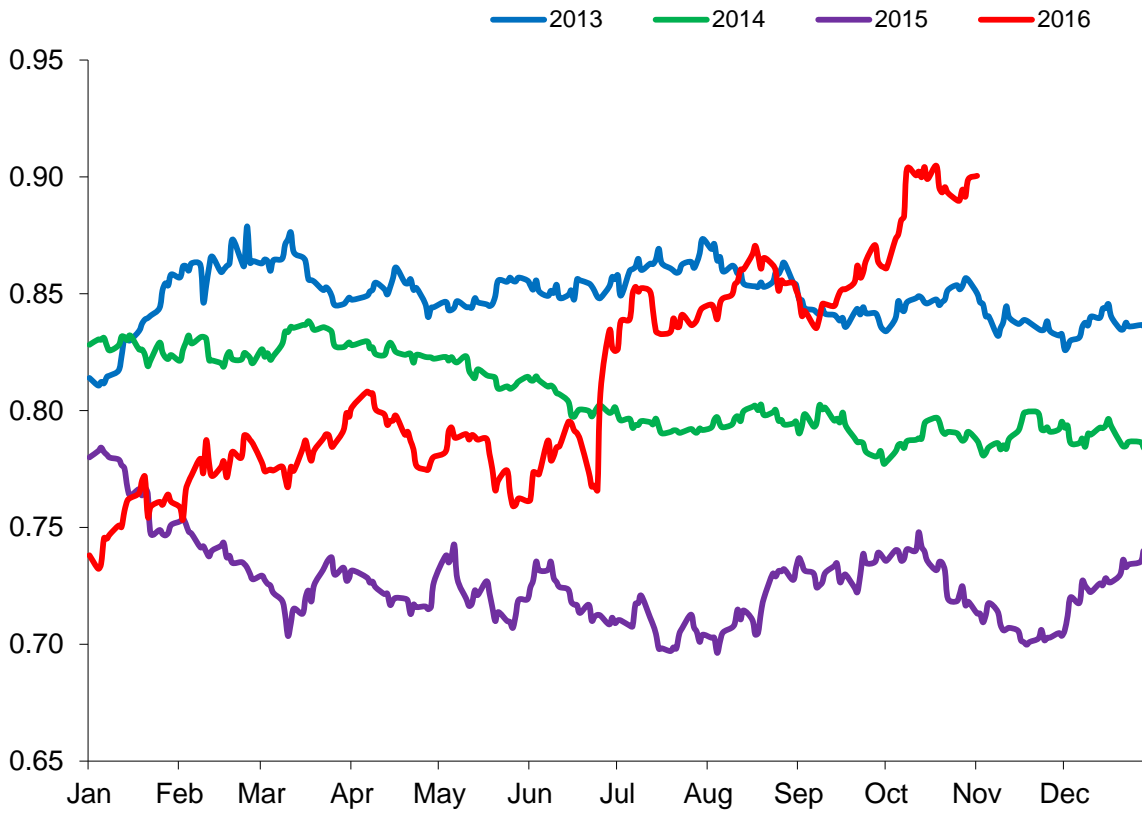
Prices relate to UK Dressing Specification

**British Isles Average R3 and R4 Heifer price**  
**52 Weeks to 29 October 2016**



Prices relate to UK Dressing Specification

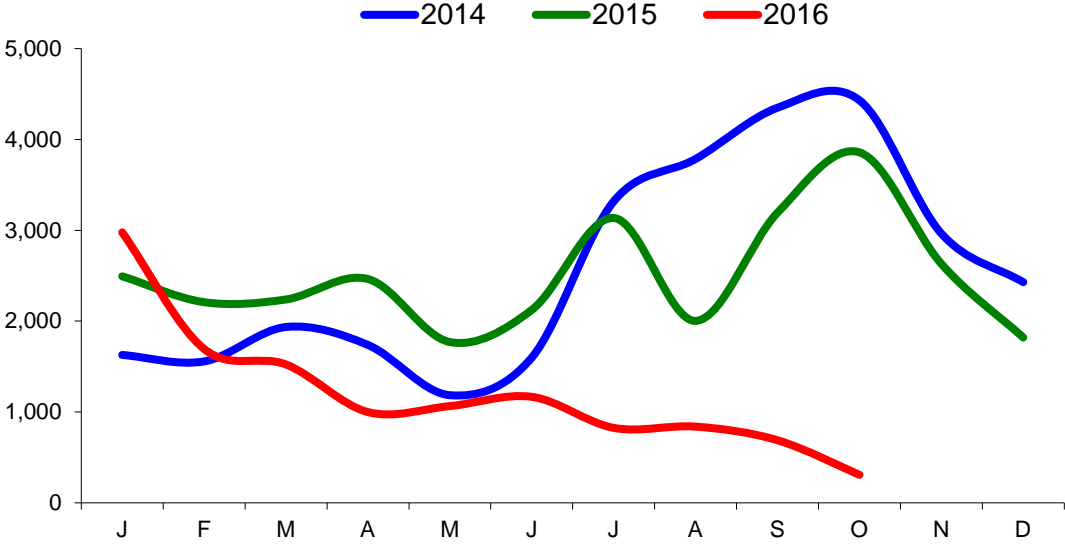
Exchange Rate £ / Euro  
01 January 2013 – 31 October 2016



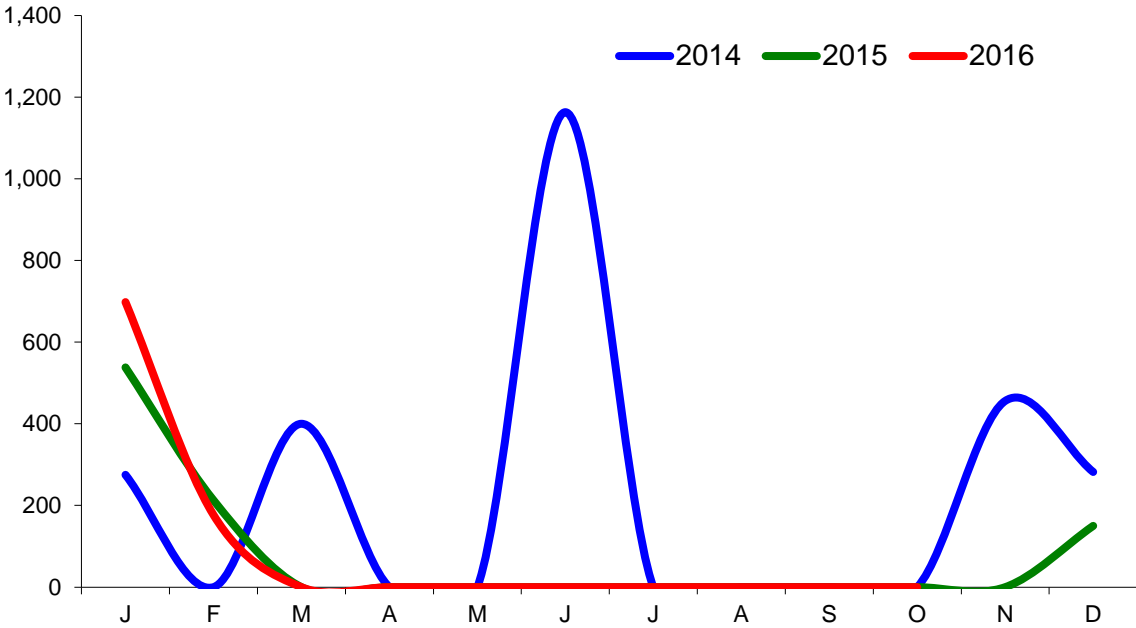


Imports

Monthly Live Imports of Cattle into NI for Direct Slaughter  
From ROI and GB Combined

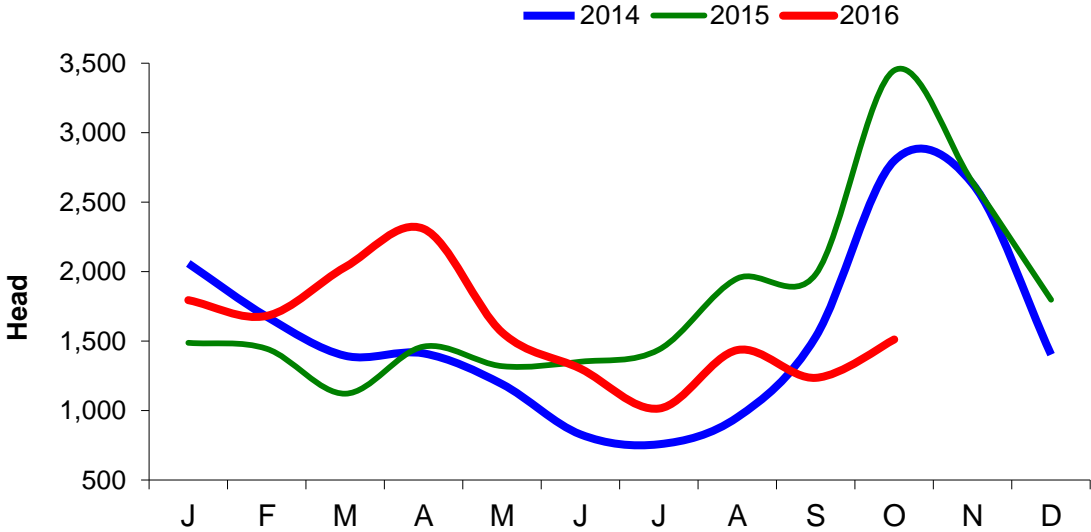


Monthly Live Imports of Sheep into NI for Direct Slaughter  
From ROI and GB Combined



Exports

Monthly Live Exports of Cattle from NI into ROI and GB



Monthly Live Exports of Sheep from NI into ROI and GB

