



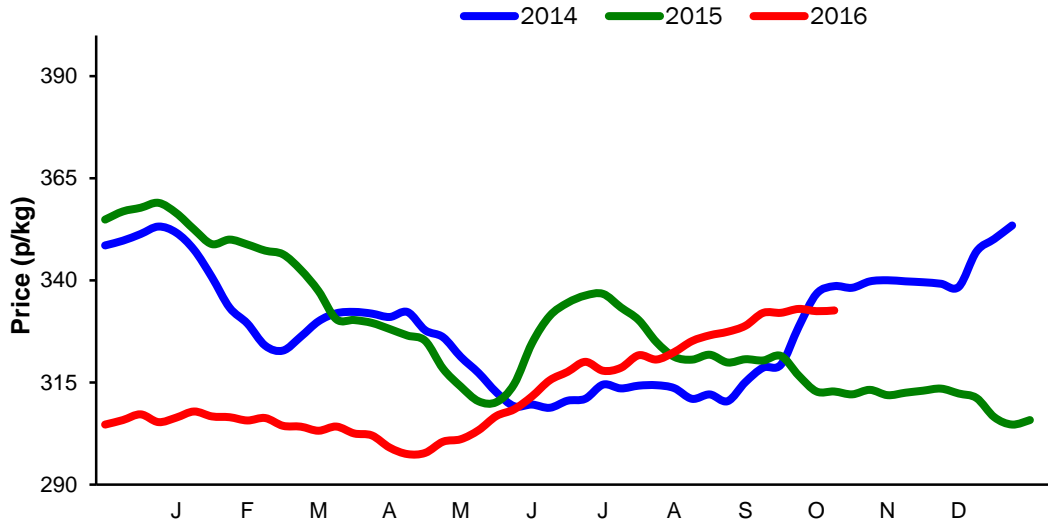
**Monthly Economic Review
September 2016**

Contents

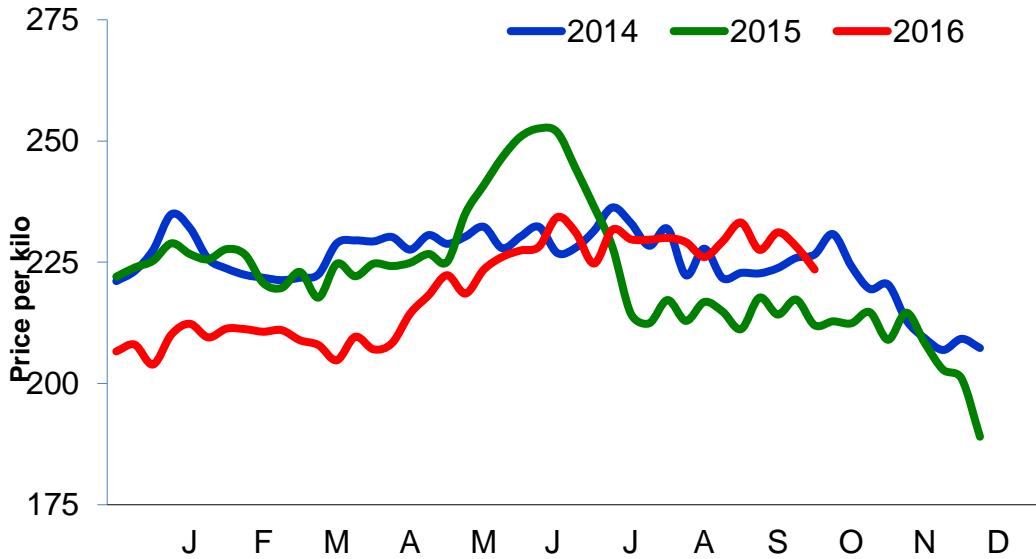
Contents	2
Cattle Prices.....	4
Average NI Clean Cattle Price.....	4
Average NI Cow Price	4
Cattle Slaughtering.....	5
NI Clean Cattle Slaughtering – Cumulative	5
NI Weekly Clean Cattle Slaughtering	5
NI Weekly Cow Slaughtering.....	5
Sheep Prices.....	6
Average NI Lamb / Hogget Price	6
Sheep Slaughtering.....	7
Cumulative Lamb & Hogget Slaughtering.....	7
Total Weekly Lamb & Hogget Slaughtering.....	7
Total Weekly Ewe and Ram Slaughtering	7
Total Carcase Weight Produced for the Food Chain.....	8
Change in Throughput / Production	9
Supply and Price.....	10
NI Lamb/Hogget Kill vs. Average Lamb / Hogget Price	10
NI Clean Cattle Kill vs. Average Clean Cattle Price.....	10
British Isles Price Comparisons	11
UK Average Cow Prices	11
Weekly UK Cow Prices	11
British Isles R3 Steer Price	12
British Isles R4 Steer Price	12
British Isles Average R3 and R4 Steer price	13
British Isles R3 Heifer Price	14
British Isles R4 Heifer Price	14
British Isles Average R3 and R4 Heifer price	15
Exchange Rate £ / Euro.....	16
Imports.....	17
Monthly Live Imports of Cattle into NI for Direct Slaughter.....	17
Monthly Live Imports of Sheep into NI for Direct Slaughter.....	17
Exports.....	18
Monthly Live Exports of Cattle from NI into Rol and GB.....	18
Monthly live Exports of Sheep from NI into Rol and GB.....	18

Cattle Prices

Average NI Clean Cattle Price

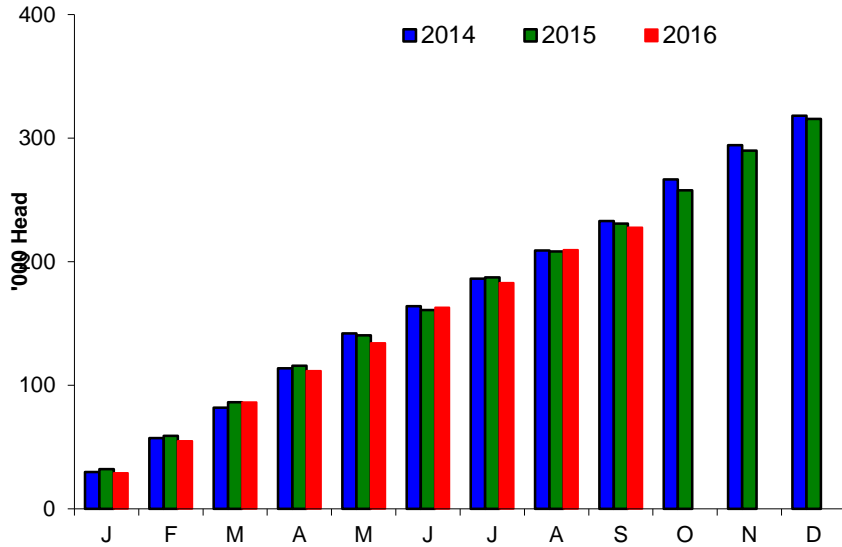


Average NI Cow Price

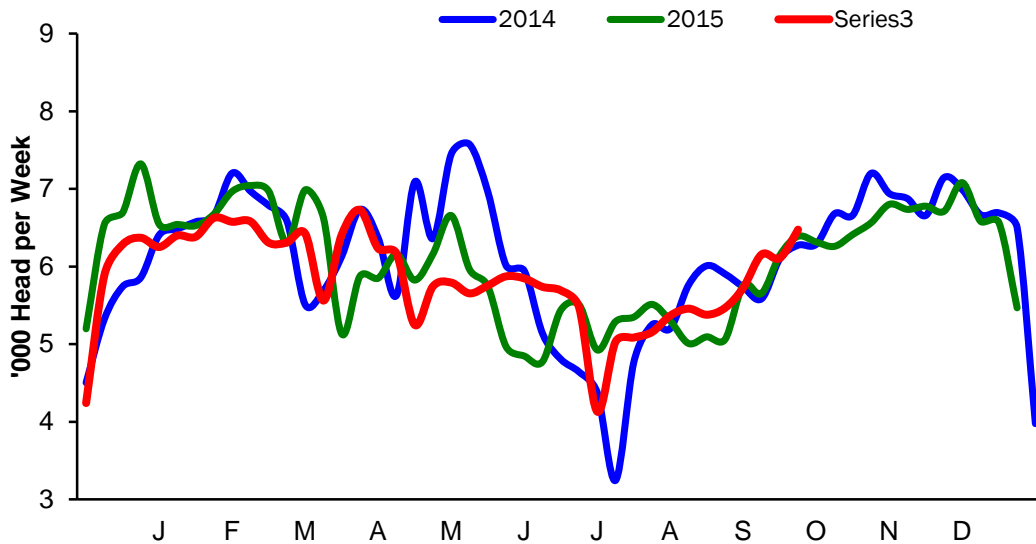


Cattle Slaughtering

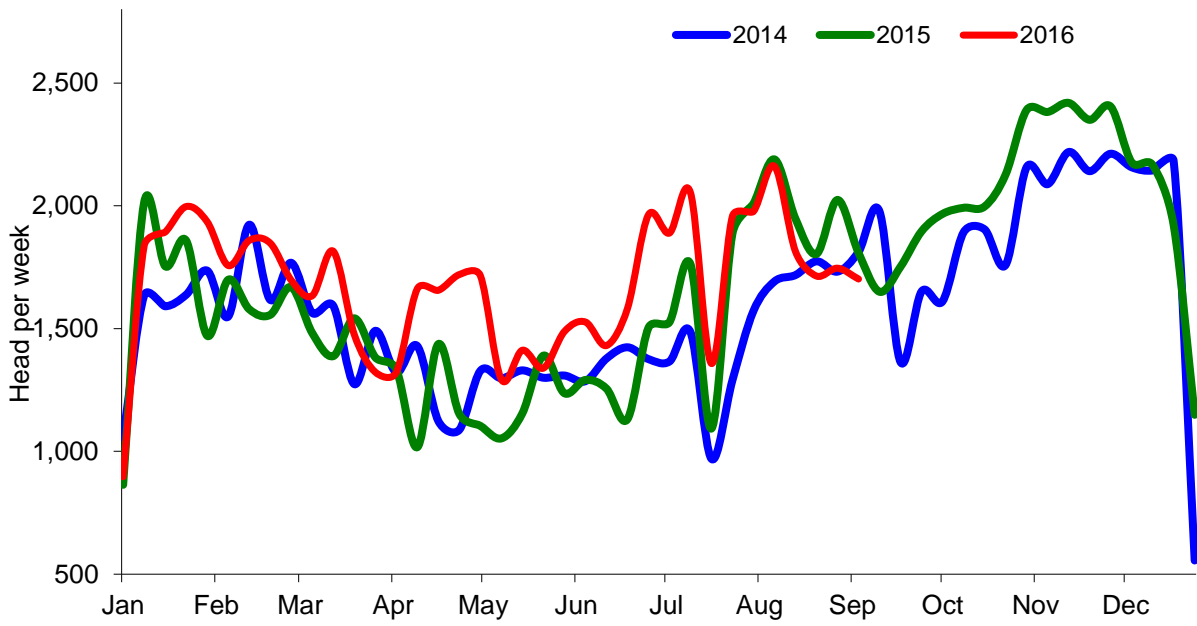
NI Clean Cattle Slaughtering – Cumulative



NI Weekly Clean Cattle Slaughtering

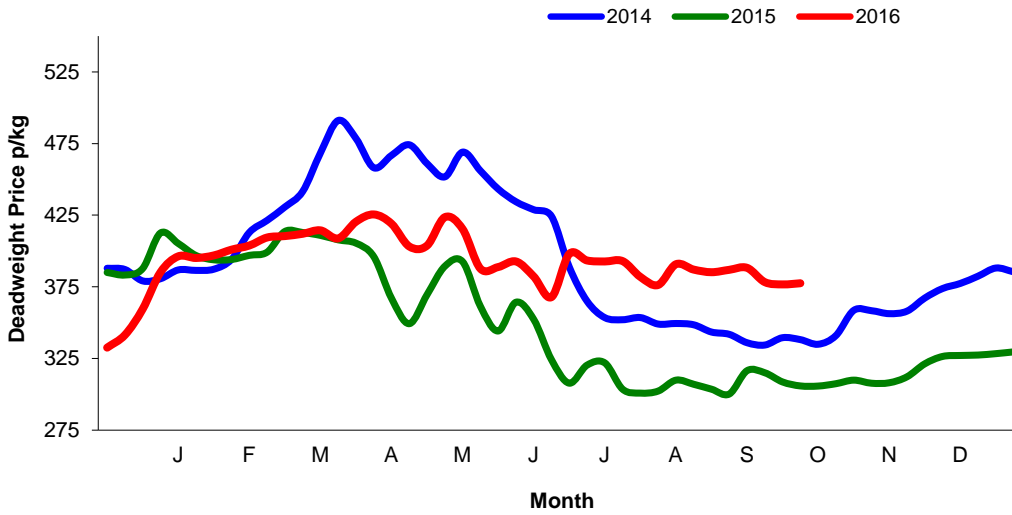


NI Weekly Cow Slaughtering



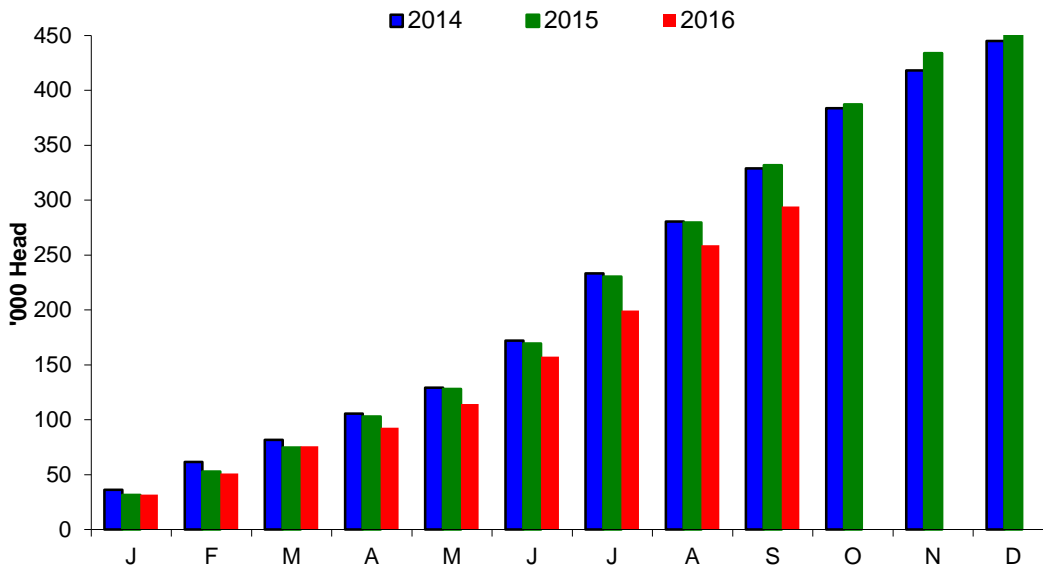
Sheep Prices

Average Deadweight NI Hogget / Lamb Price

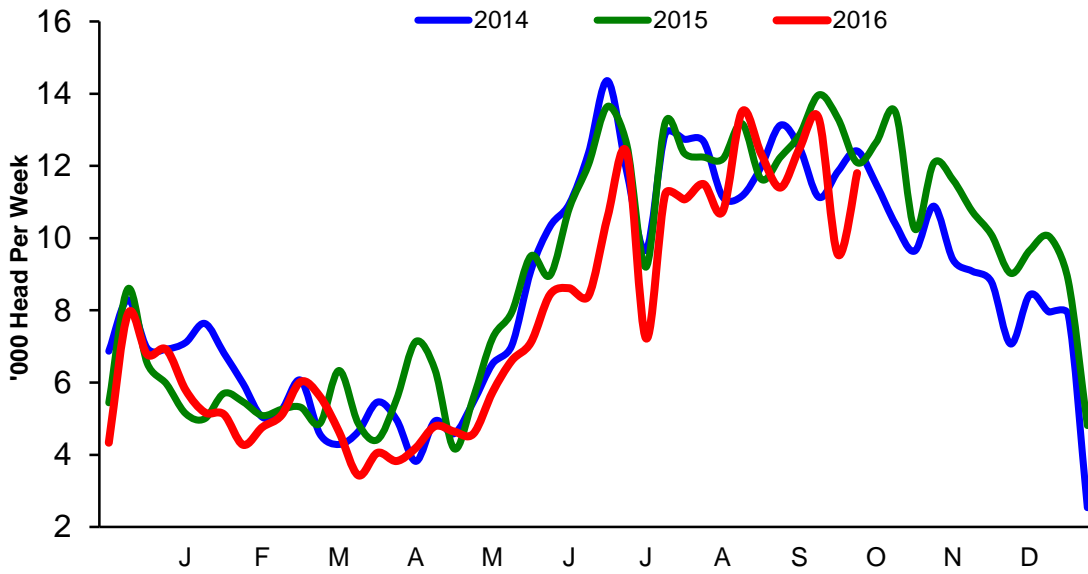


Sheep Slaughterings

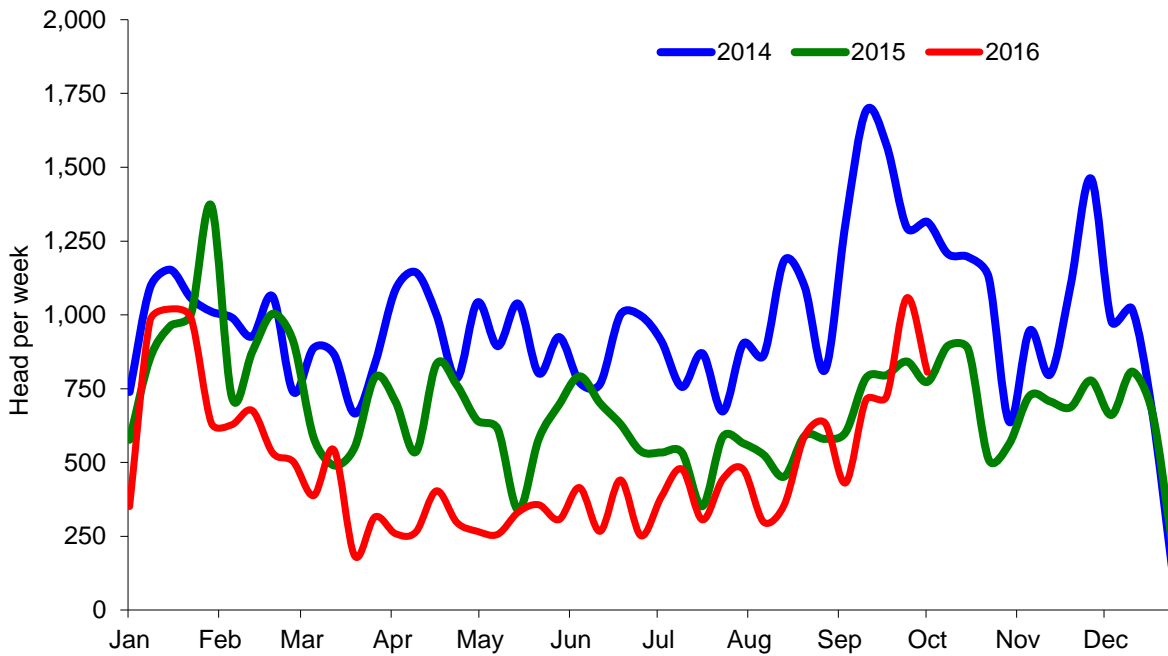
Cumulative Lamb & Hogget Slaughterings



Total Weekly Lamb & Hogget Slaughtering



Total Weekly Ewe and Ram Slaughtering



Market Information September 2016
Page 8

NI CATTLE AND SHEEP SLAUGHTERINGS FOR THE FOODCHAIN						
	September			Year to Date		
	(4 weeks ended 01/10/16)			(26 weeks ended 01/10/16)		
	Sep-15	Sep-16	% Change	2015	2016	Change
CATTLE						
Steers	12,734	13,767	+8%	74,399	74,905	+1%
Heifers	8,008	8,312	+4%	53,430	52,234	-2%
Young Bulls / Calves	1,873	2,386	+27%	16,733	20,757	+24%
Total Prime Cattle	22,615	24,465	+8%	144,562	147,896	+2%
Calves	562	579	+3%	3,074	3,595	+0%
Cows	7,107	8,357	+18%	39,410	45,518	+15%
Mature Bulls	357	403	+13%	1,827	2,206	+21%
Total Cattle	30,641	33,804	+10%	188,873	199,215	+5%
SHEEP						
Lambs & Hoggets	52,384	47,145	-10%	257,193	230,087	-11%
Ewes & Rams	3,026	3,299	+9%	16,113	11,558	-28%
Total Sheep	55,410	50,444	-9%	273,306	241,645	-12%

The above figures are provisional; any amendments will be incorporated in the cumulative data (source DAERA).

NI BEEF AND SHEEPMEAT PRODUCTION - FOODCHAIN						
	September			Year to Date		
	(4 weeks ended 01/10/16)			(26 weeks ended 01/10/16)		
	Sep-15	Sep-16	% Change	2015	2016	Change
BEEF						
Steers	4,543	4,852	+7%	26,253	26,483	+1%
Heifers	2,586	2,616	+1%	17,034	16,550	-3%
Young Bulls	649	780	+20%	5,715	6,855	+20%
Total Prime Beef	7,778	8,248	+6%	49,001	49,889	+2%
Calves	118	124	+5%	660	764	+16%
Cows	2,158	2,421	+12%	12,094	13,770	+14%
Mature Bulls	168	192	+14%	819	1,007	+23%
Total Beef	10,222	10,985	+7%	62,574	65,431	+5%
SHEEPMEAT						
Lambs & Hoggets	1,121	982	-12%	5,521	4,828	-43%
Ewes & Rams	86	92	+6%	469	337	-61%
Total Sheepmeat	1,207	1,074	-11%	1,135	621	-45%

The above figures are provisional; any amendments will be incorporated in the cumulative data (source DAERA).

Market Information September 2016
Page 9

Total Carcase Weight Produced for the Food Chain
Year-to-Date (tonnes – t.)

Month	Prime Cattle		Cows & Bulls		Lambs/Hoggets		Ewes & Rams	
	2015	2016	2015	2016	2015	2016	2015	2016
January	10,829	9,924	2,569	2,772	712	675	127	107
February	8,919	8,906	2,085	2,334	476	422	92	61
March	9,199	10,704	1,882	2,466	482	551	66	47
April	7,850	8,617	1,564	2,188	493	367	79	37
May	8,380	7,577	1,518	1,869	500	465	62	38
June	8,876	9,789	2,148	2,785	1,064	916	103	54
July	7,214	6,644	2,122	2,407	1,038	868	60	51
August	8,904	9,014	3,235	2,915	1,304	1,230	79	66
September	7,778	8,248	2,326	2,612	1,121	982	86	92
October								
November								
December								
Total	77,948	79,423	19,450	22,348	7,190	6,476	754	552
Change (t.)	1,475		2,898		-714		-202	
% Change	1.89%		14.90%		-9.94%		-26.81%	

**excludes calves*

Change in Throughput / Production
Last 4 weeks 2015/2016

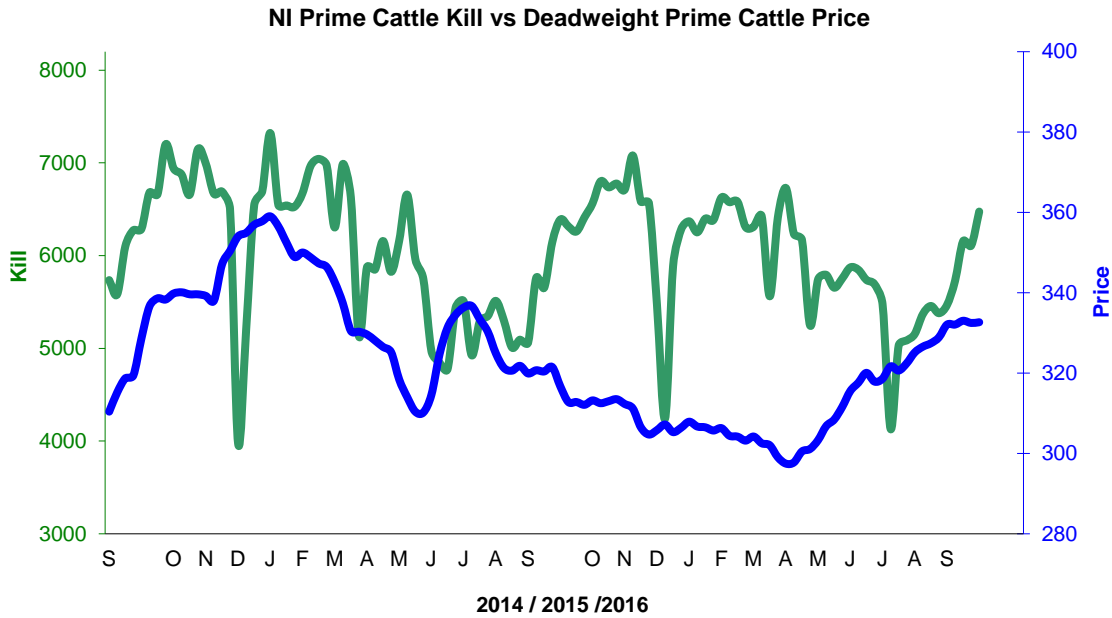
Change in Throughput / Production 2015/2016

September

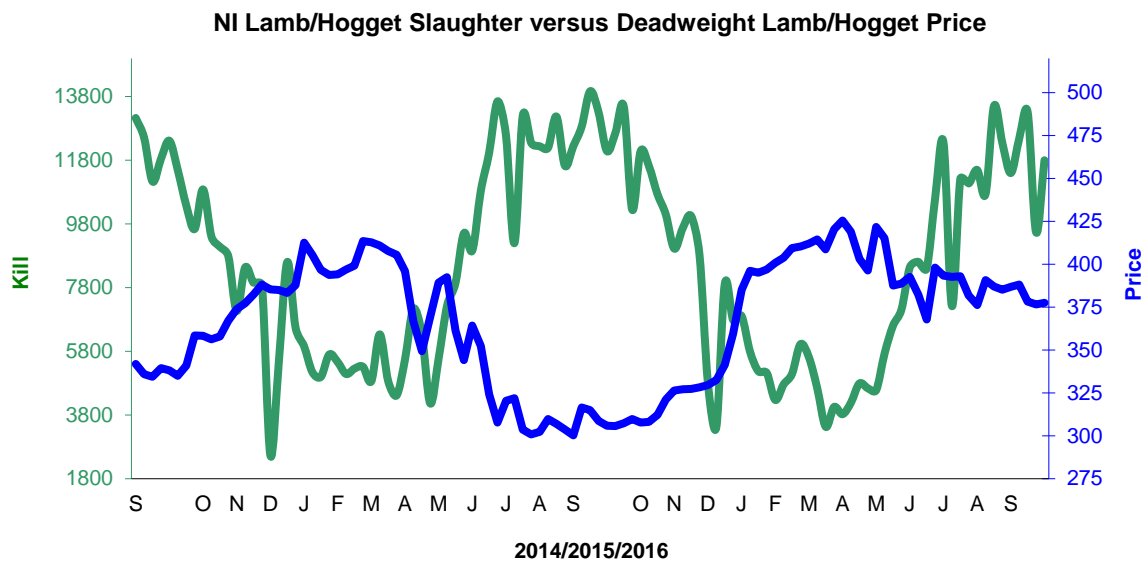
2015/2016	Number	Tonnage	ACW Kg
Prime	8.2%	6.1%	-6.82
Cows	17.6%	12.2%	-14.05
Total	10.3%	7.5%	-8.68
Lamb	-10.0%	-12.4%	-0.57
Ewes and Rams	9.0%	6.5%	-0.64
Total Sheep	-9.0%	-11.1%	-0.49

Supply and Price

NI Clean Cattle Kill vs. Average Clean Cattle Price



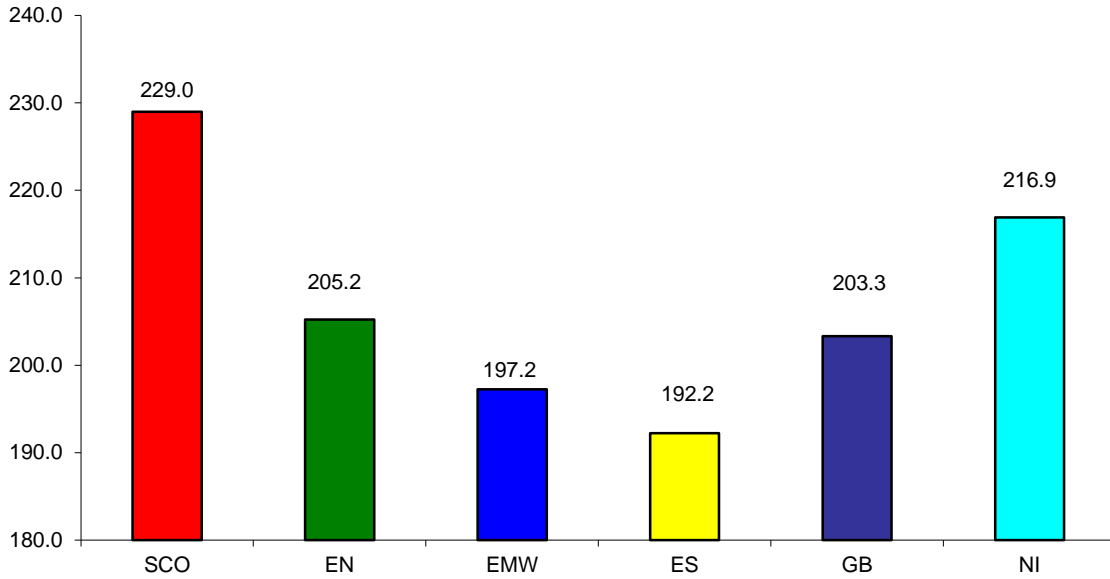
NI Lamb/Hogget Kill vs. Average Lamb / Hogget Price



Green	Supply (Kill)
Blue	Price

BRITISH ISLES COMPARISONS

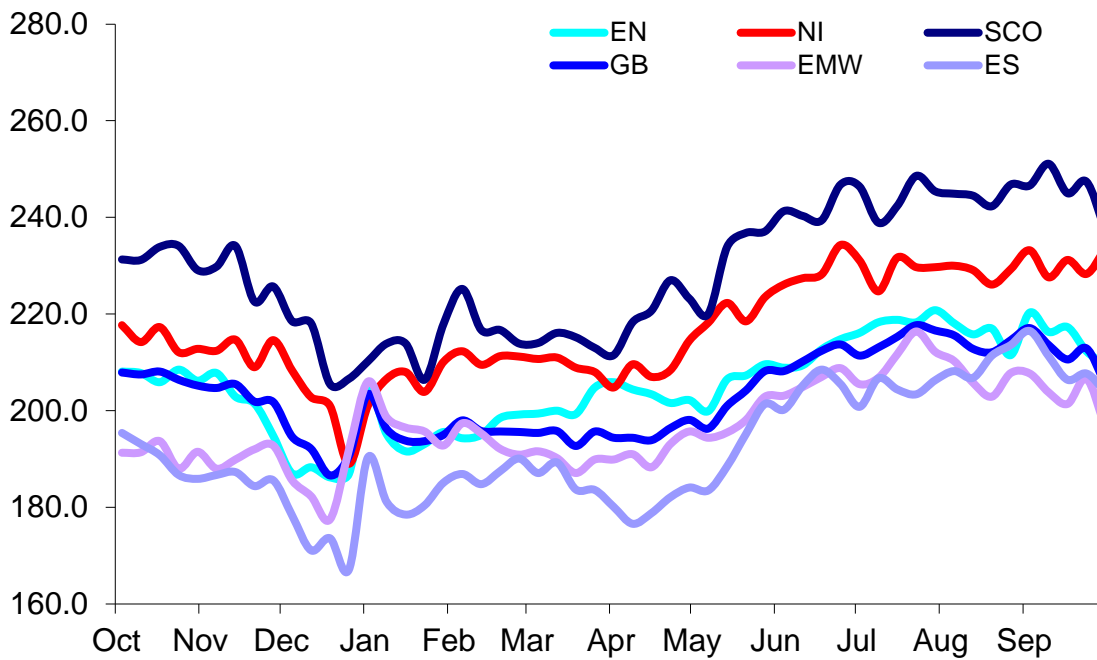
UK Average Cow Prices
52 Weeks to 01 October 2016



SCO	Scotland
EN	England North
EMW	England Midlands and Wales
ES	England South
NI	Northern Ireland
GB	Great Britain

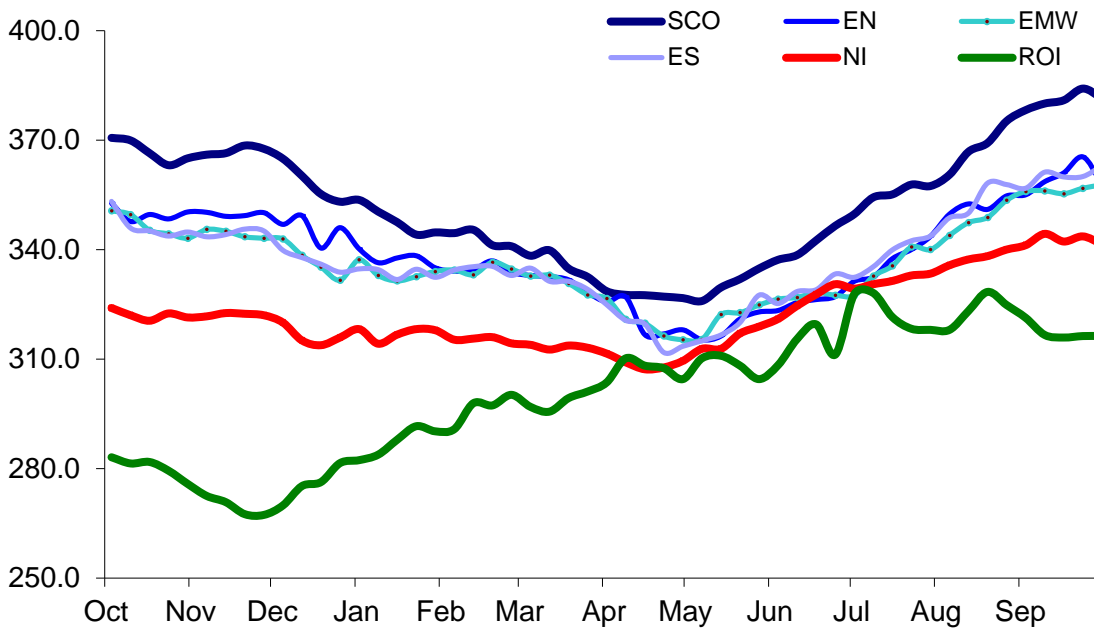
Prices relate to UK Dressing Specification

Weekly UK Cow Prices
52 Weeks to 01 October 2016



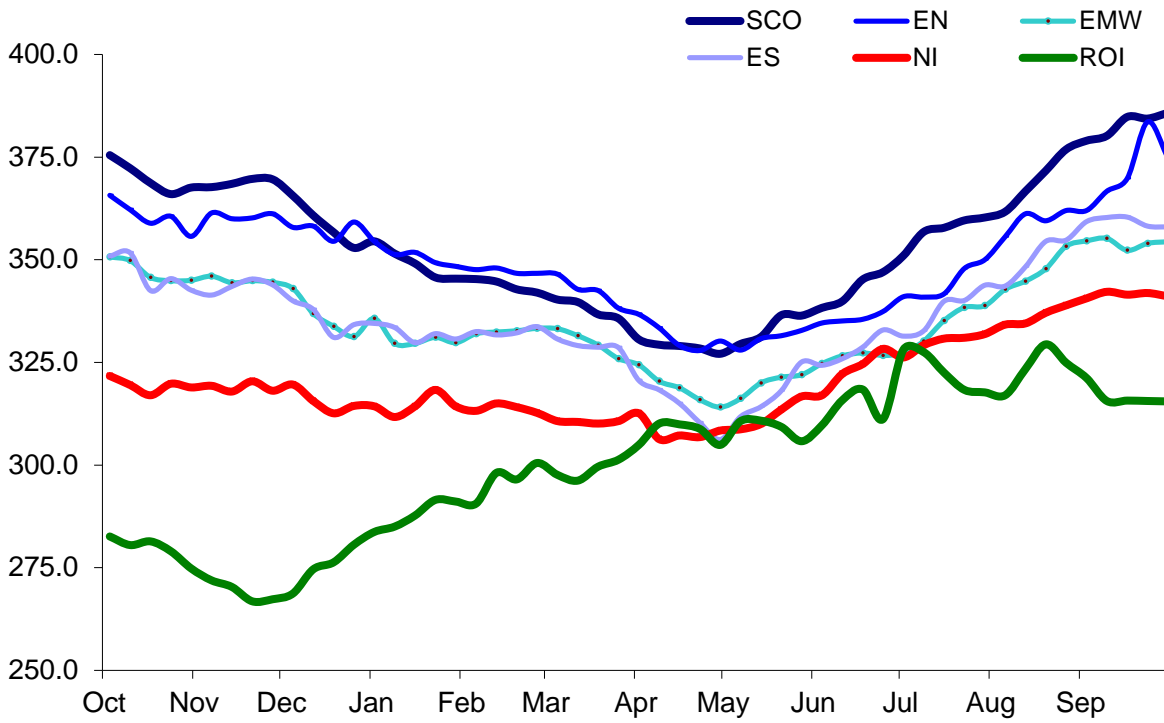
Prices relate to UK Dressing Specification

British Isles R3 Steer Price
52 Weeks to 01 October 2016



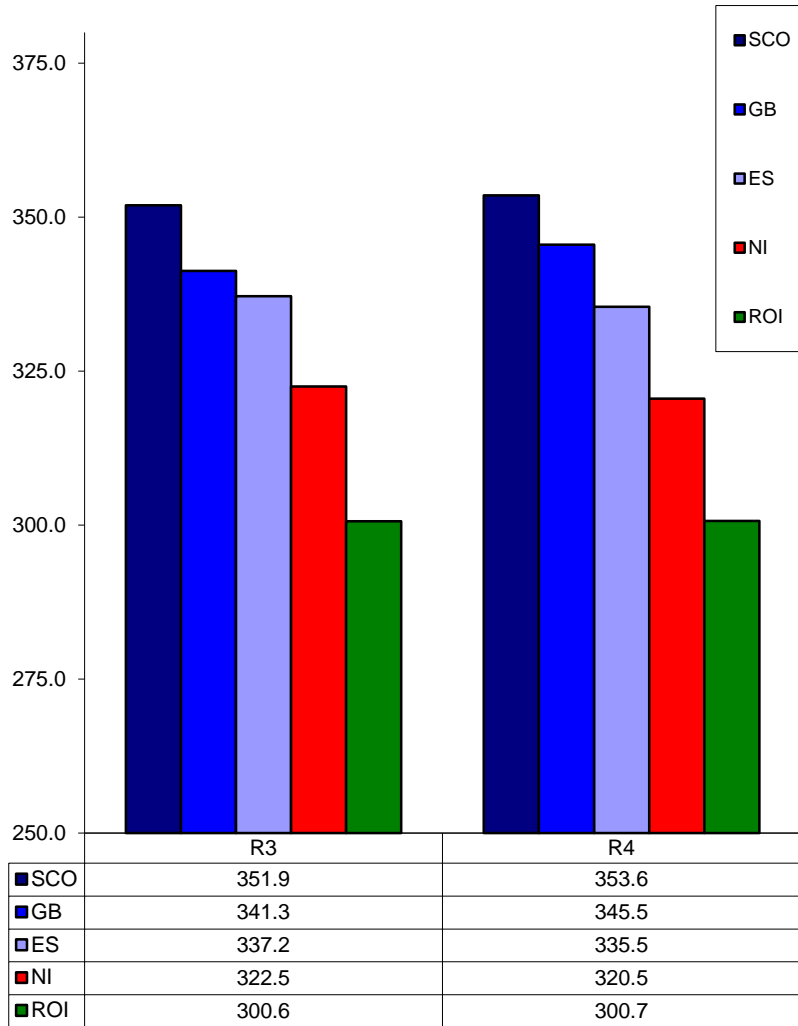
Prices relate to UK Dressing Specification

British Isles R4 Steer Price
52 Weeks to 01 October 2016



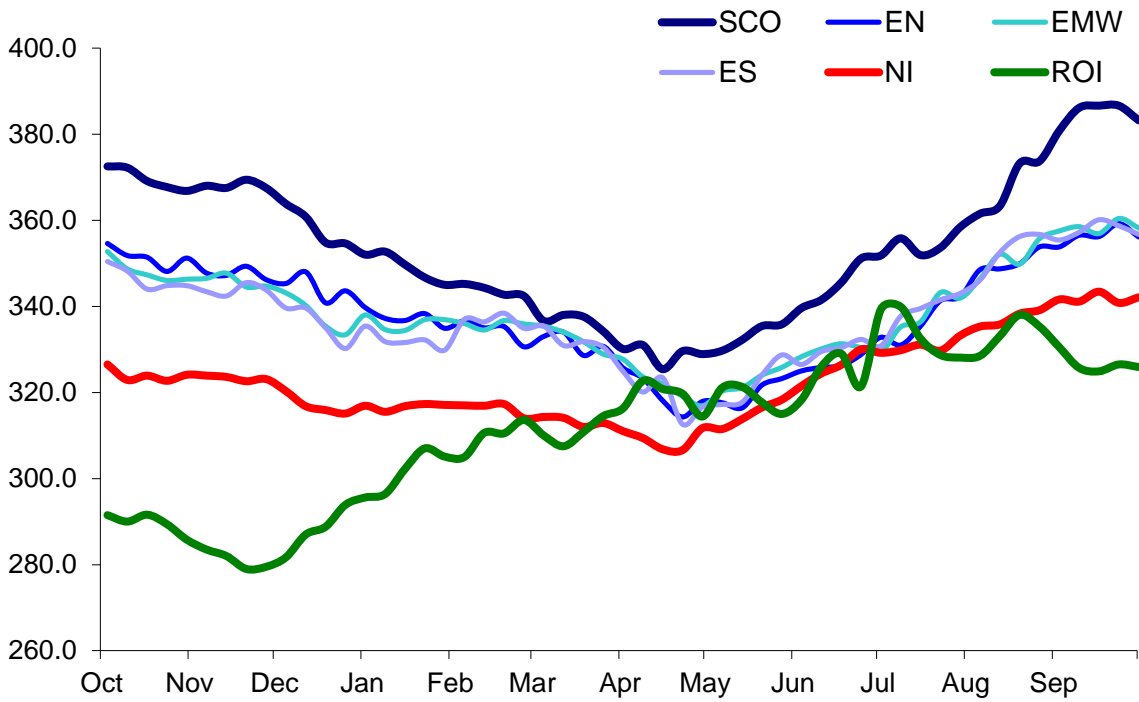
Prices relate to UK Dressing Specification

British Isles Average R3 and R4 Steer price
52 Weeks to 01 October 2016



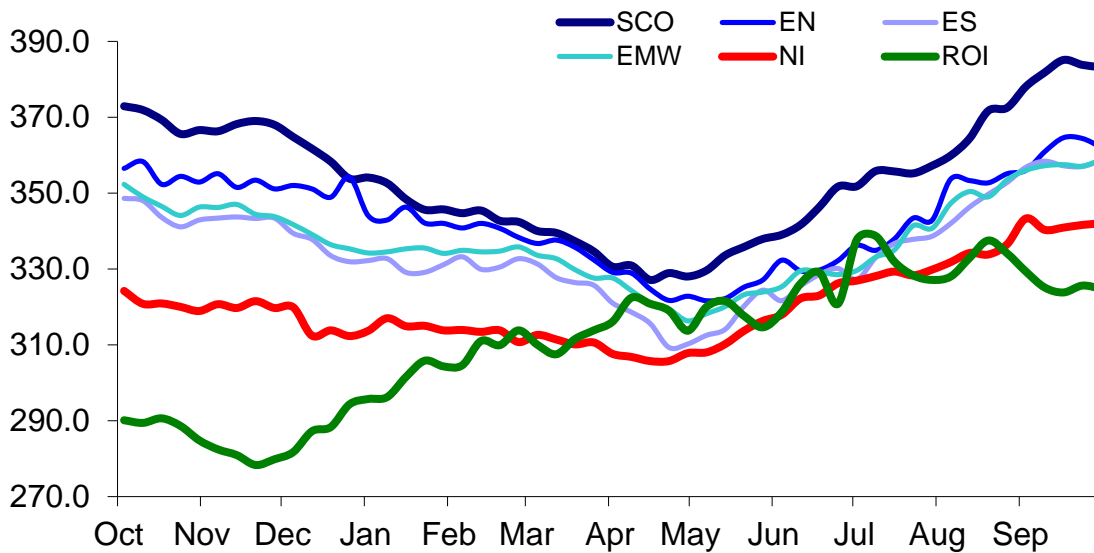
Prices relate to UK Dressing Specification

British Isles R3 Heifer Price
52 Weeks to 01 October 2016



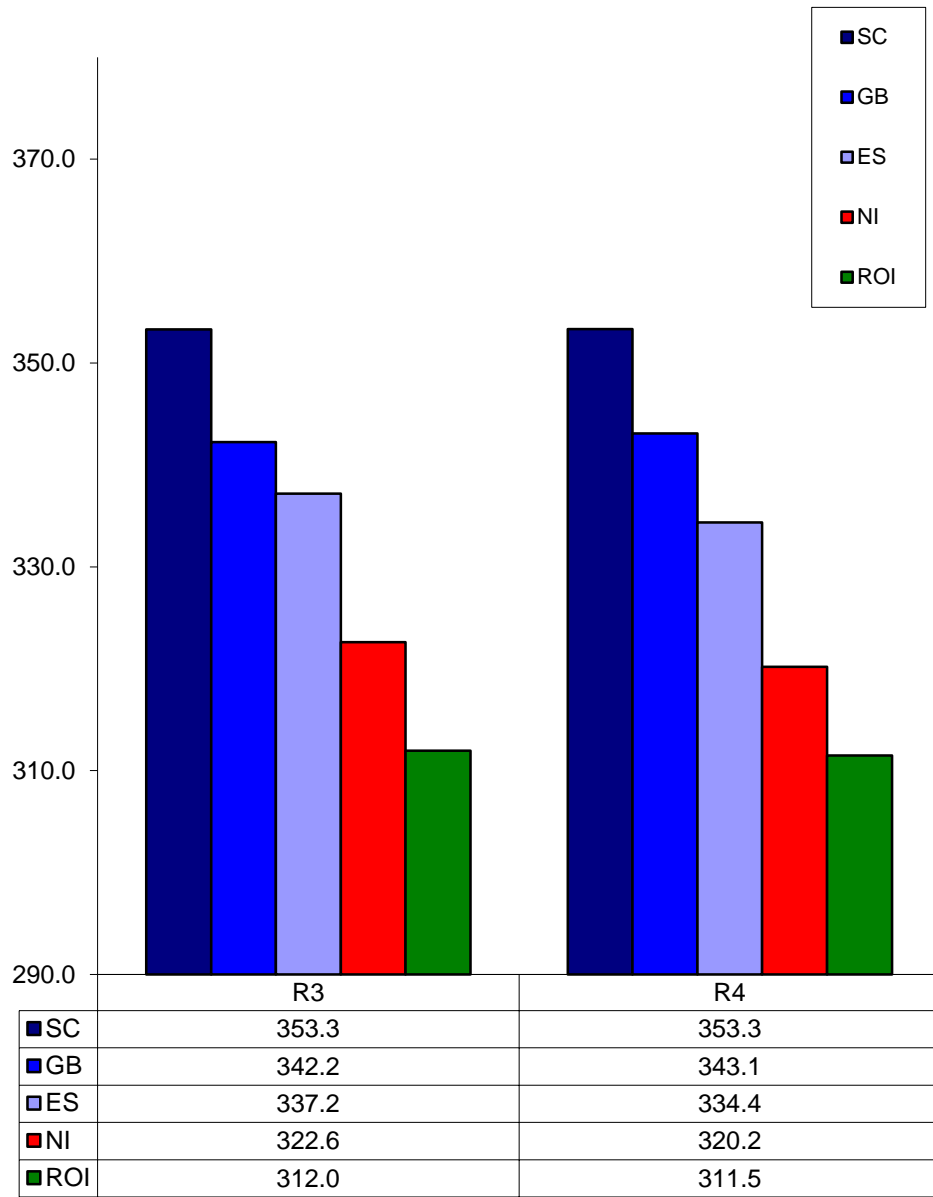
Prices relate to UK Dressing Specification

British Isles R4 Heifer Price
52 Weeks to 01 October 2016



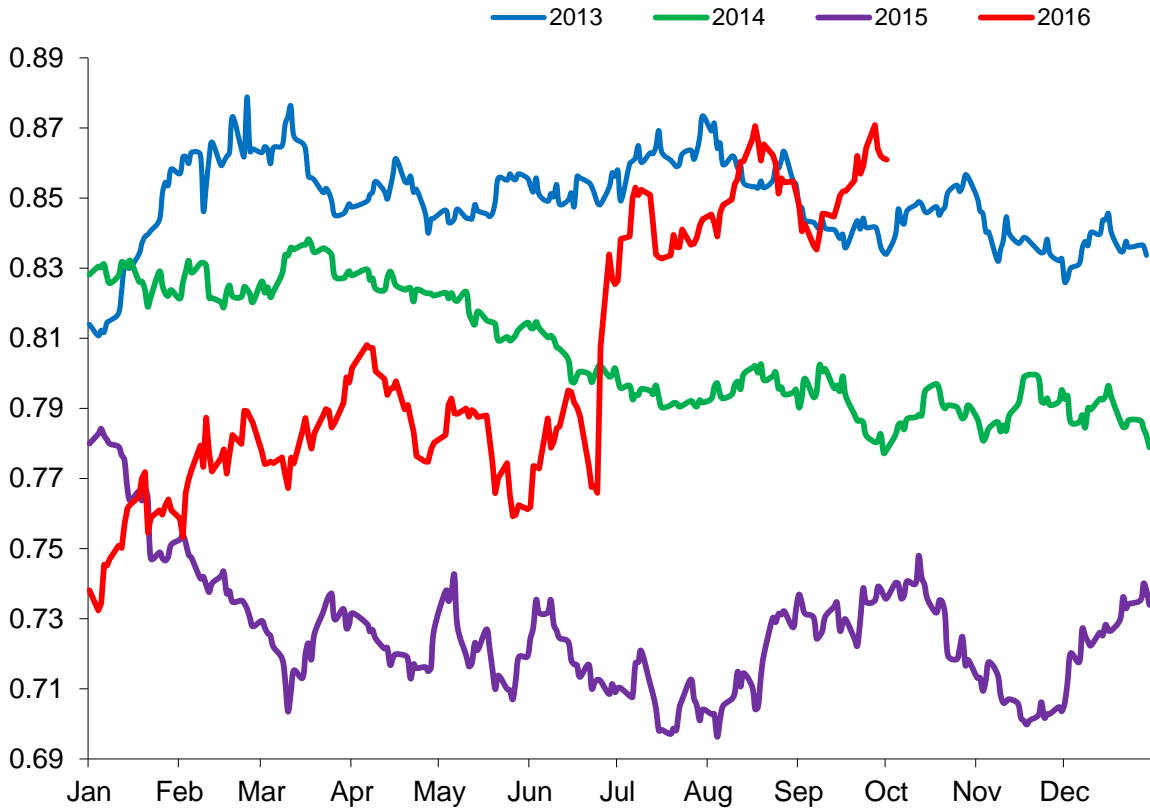
Prices relate to UK Dressing Specification

British Isles Average R3 and R4 Heifer price
52 Weeks to 01 October 2016



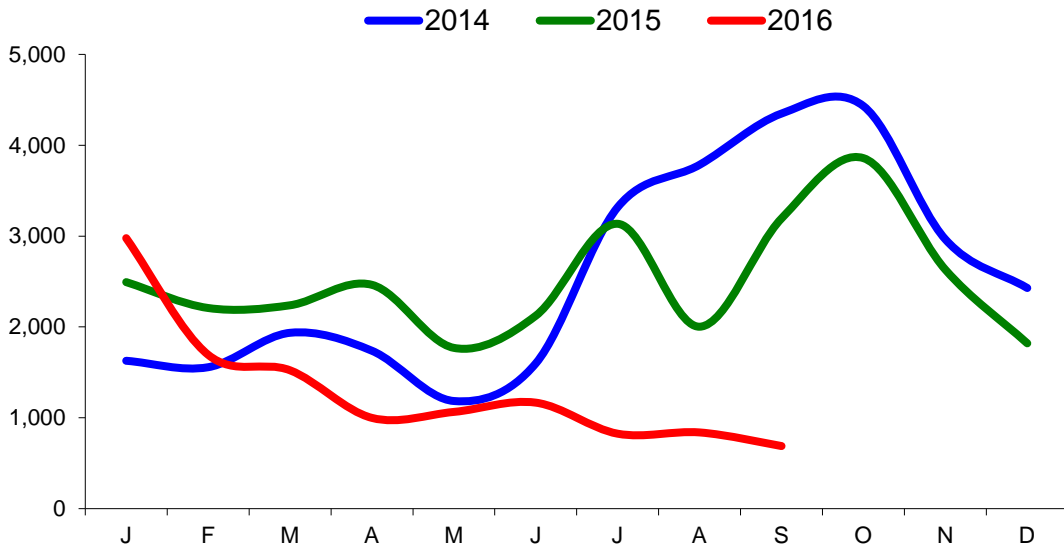
Prices relate to UK Dressing Specification

Exchange Rate £ / Euro
01 January 2013 – 30 September 2016

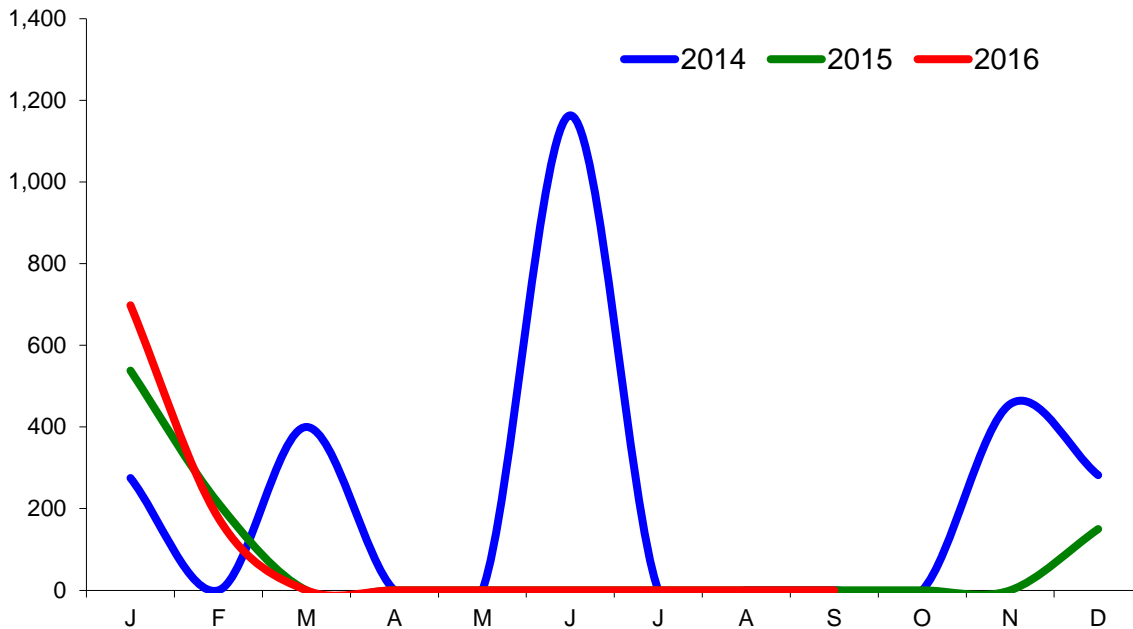


Imports

Monthly Live Imports of Cattle into NI for Direct Slaughter From ROI and GB Combined

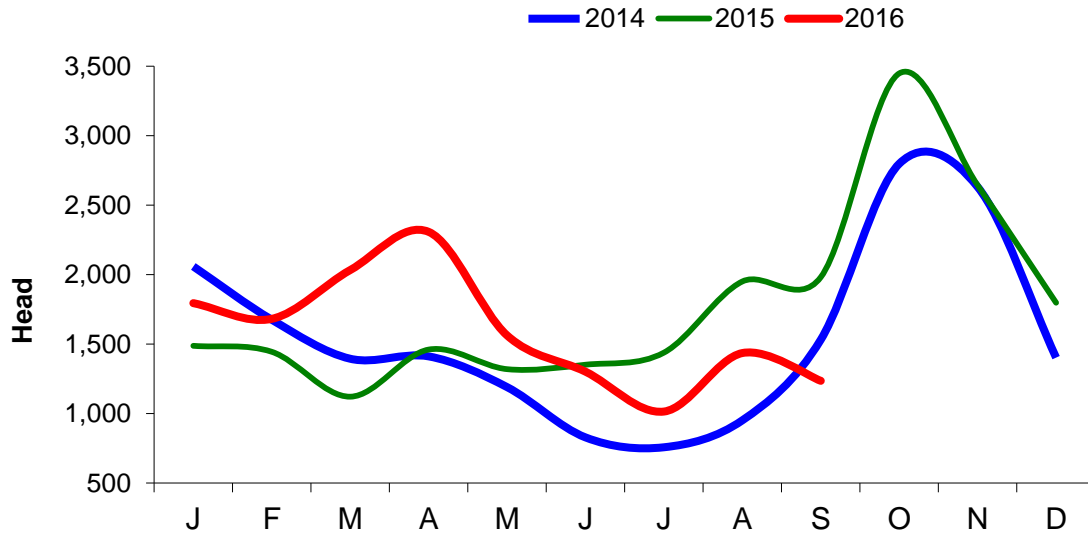


Monthly Live Imports of Sheep into NI for Direct Slaughter From ROI and GB Combined



Exports

Monthly Live Exports of Cattle from NI into ROI and GB



Monthly Live Exports of Sheep from NI into ROI and GB

