

LMC

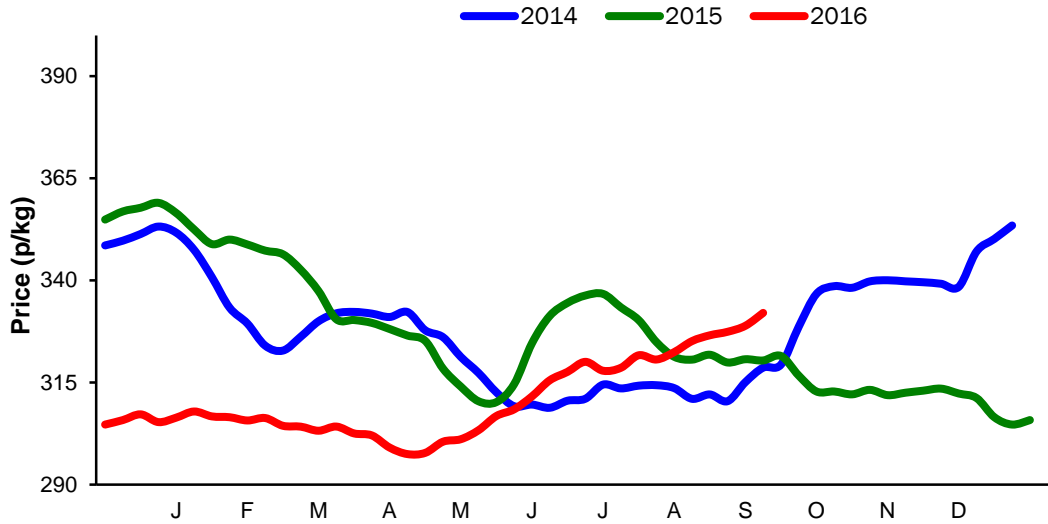
**Monthly Economic Review
August 2016**

Contents

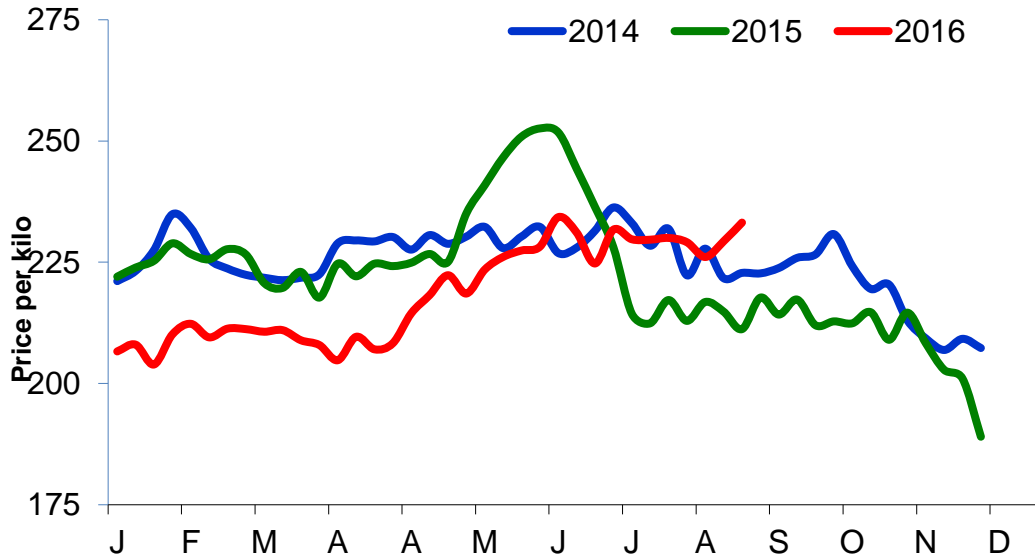
Contents	2
Cattle Prices.....	4
Average NI Clean Cattle Price.....	4
Average NI Cow Price	4
Cattle Slaughtering.....	5
NI Clean Cattle Slaughtering – Cumulative	5
NI Weekly Clean Cattle Slaughtering	5
NI Weekly Cow Slaughtering.....	5
Sheep Prices.....	6
Average NI Lamb / Hogget Price	6
Sheep Slaughtering.....	7
Cumulative Lamb & Hogget Slaughtering.....	7
Total Weekly Lamb & Hogget Slaughtering.....	7
Total Weekly Ewe and Ram Slaughtering	7
Total Carcase Weight Produced for the Food Chain.....	8
Change in Throughput / Production	9
Supply and Price.....	10
NI Lamb/Hogget Kill vs. Average Lamb / Hogget Price	10
NI Clean Cattle Kill vs. Average Clean Cattle Price.....	10
British Isles Price Comparisons	11
UK Average Cow Prices	11
Weekly UK Cow Prices	11
British Isles R3 Steer Price	12
British Isles R4 Steer Price	12
British Isles Average R3 and R4 Steer price	13
British Isles R3 Heifer Price	14
British Isles R4 Heifer Price	14
British Isles Average R3 and R4 Heifer price	15
Exchange Rate £ / Euro.....	16
Imports.....	17
Monthly Live Imports of Cattle into NI for Direct Slaughter.....	17
Monthly Live Imports of Sheep into NI for Direct Slaughter.....	17
Exports.....	18
Monthly Live Exports of Cattle from NI into Rol and GB.....	18
Monthly live Exports of Sheep from NI into Rol and GB.....	18

Cattle Prices

Average NI Clean Cattle Price

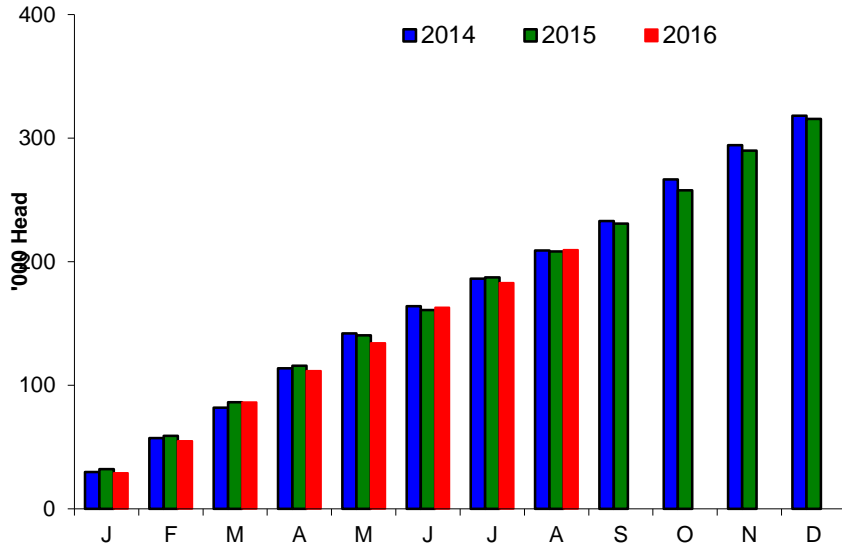


Average NI Cow Price

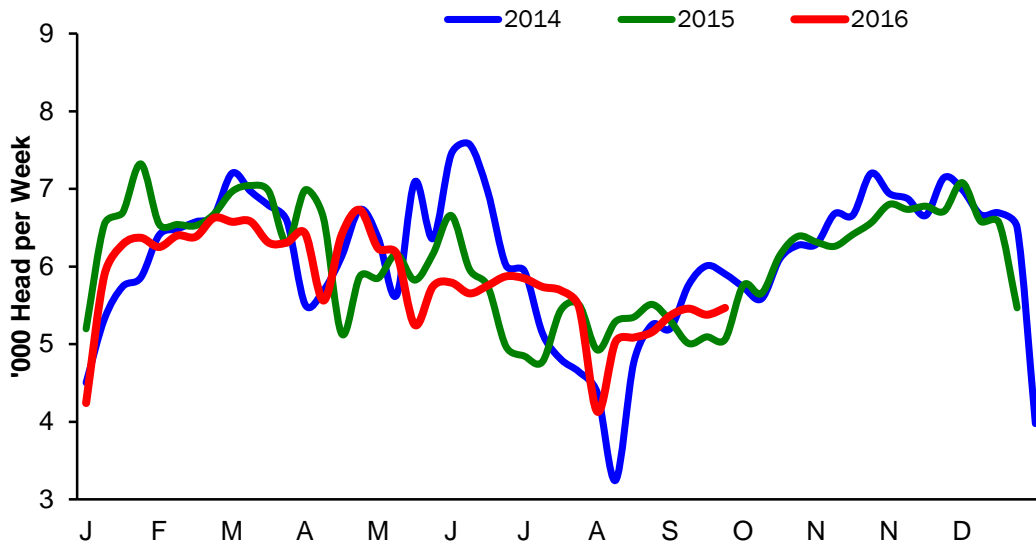


Cattle Slaughtering

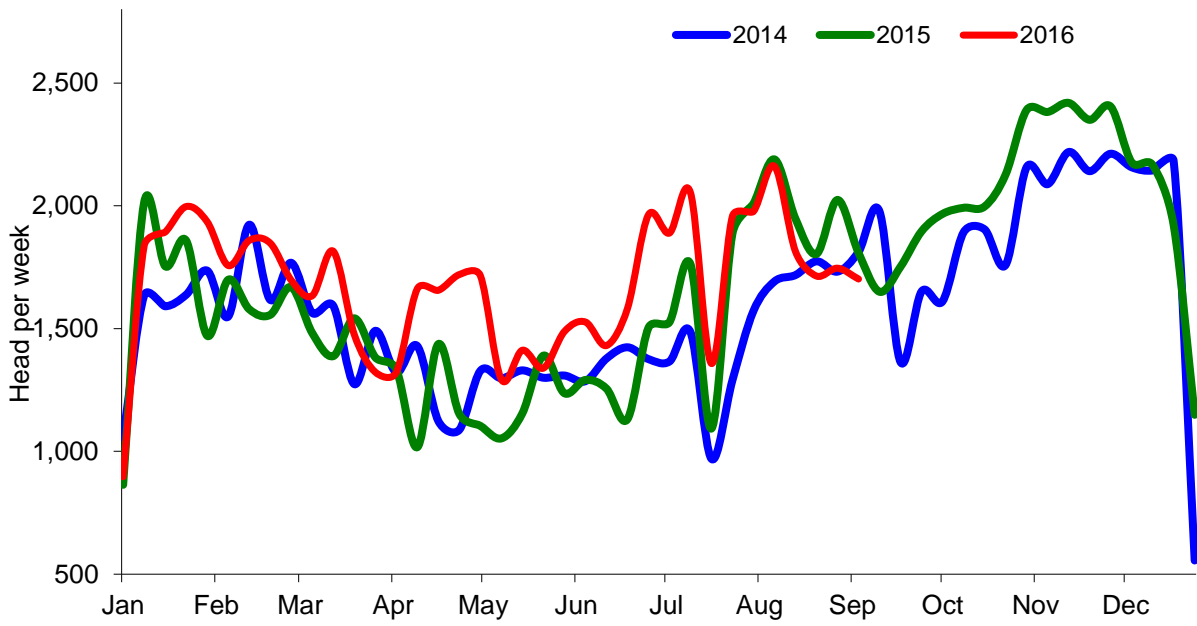
NI Clean Cattle Slaughtering – Cumulative



NI Weekly Clean Cattle Slaughtering

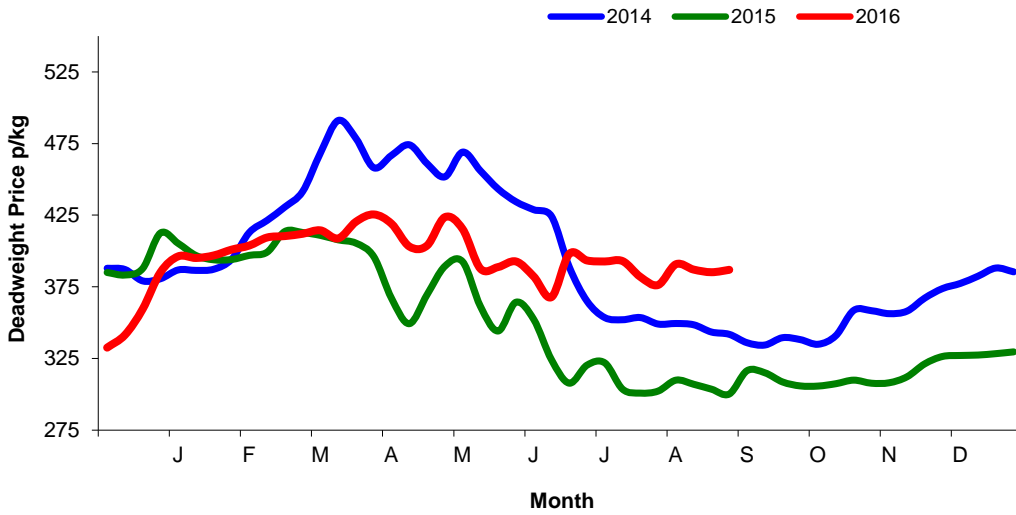


NI Weekly Cow Slaughtering



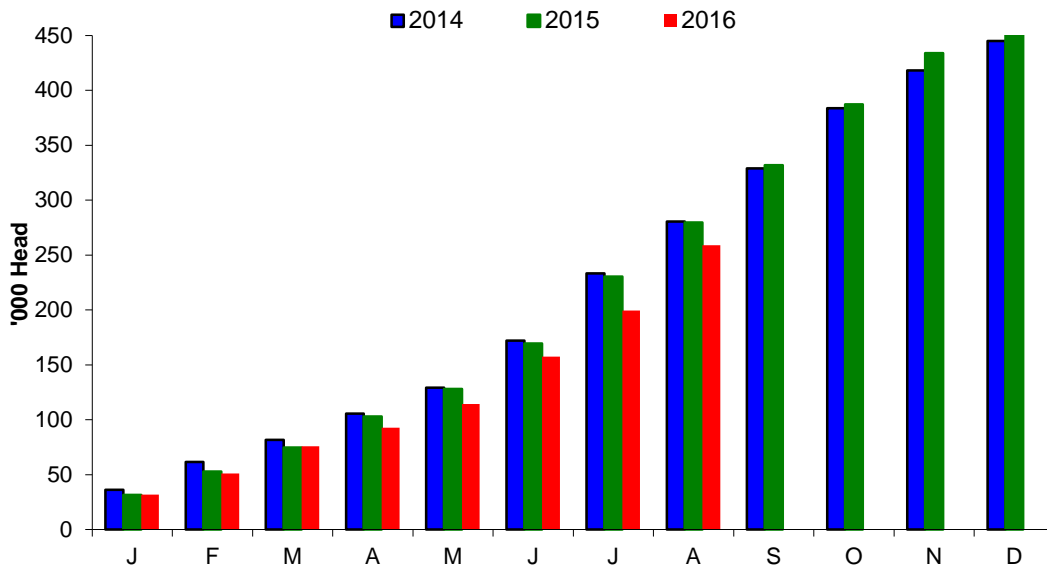
Sheep Prices

Average Deadweight NI Hogget / Lamb Price

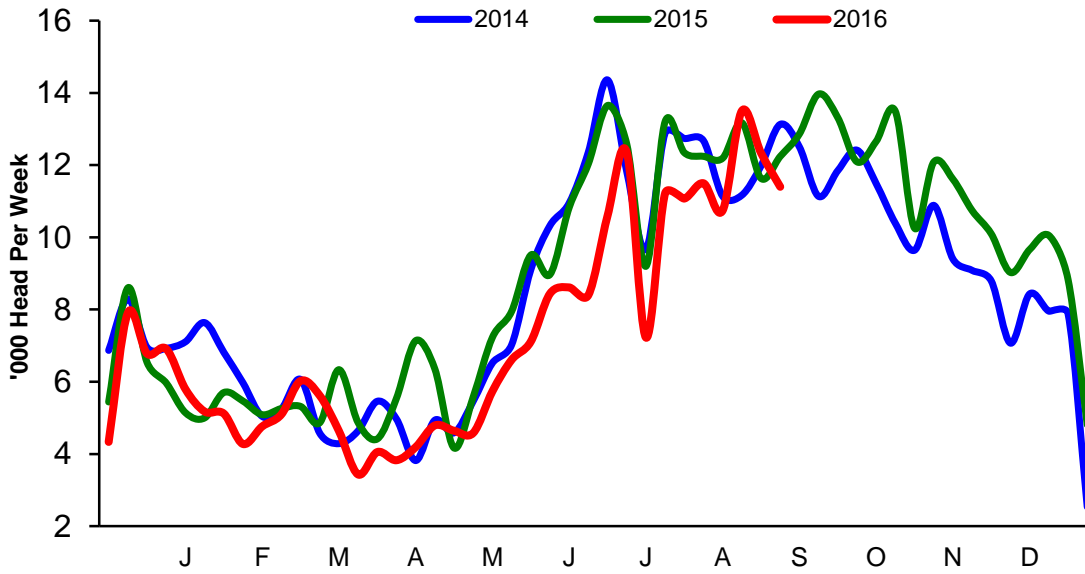


Sheep Slaughterings

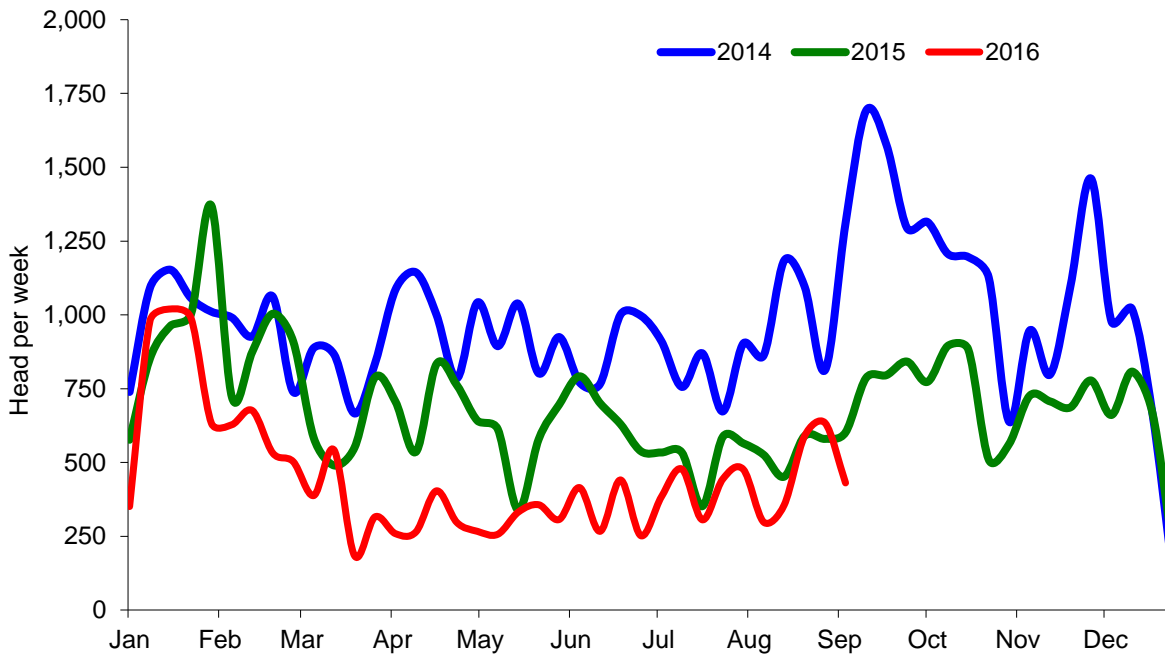
Cumulative Lamb & Hogget Slaughterings



Total Weekly Lamb & Hogget Slaughtering



Total Weekly Ewe and Ram Slaughtering



Market Information August 2016

Page 8

NI CATTLE AND SHEEP SLAUGHTERINGS FOR THE FOODCHAIN						
	August			Year to Date		
	(5 weeks ended 03/09/16)			(22 weeks ended 03/09/16)		
	Aug-15	Aug-16	% Change	2015	2016	Change
CATTLE						
Steers	13,211	13,575	+3%	61,665	61,138	-1%
Heifers	9,801	9,499	-3%	45,422	43,922	-3%
Young Bulls / Calves	3,251	3,752	+15%	14,860	18,371	+24%
Total Prime Cattle	26,263	26,826	+2%	121,947	123,431	+1%
Calves	685	772	+13%	2,512	3,016	+0%
Cows	9,973	9,137	-8%	32,303	37,161	+15%
Mature Bulls	411	419	+2%	1,470	1,803	+23%
Total Cattle	37,332	37,154	-0%	158,232	165,411	+5%
SHEEP						
Lambs & Hoggets	61,587	59,476	-3%	204,809	182,942	-11%
Ewes & Rams	2,713	2,309	-15%	13,087	8,259	-37%
Total Sheep	64,300	61,785	-4%	217,896	191,201	-12%
The above figures are provisional; any amendments will be incorporated in the cumulative data (source DARD).						

NI BEEF AND SHEEPMEAT PRODUCTION - FOODCHAIN						
	August			Year to Date		
	(5 weeks ended 03/09/16)			(22 weeks ended 03/09/16)		
	Aug-15	Aug-16	% Change	2015	2016	Change
BEEF						
Steers	4,674	4,777	+2%	21,710	21,631	-0%
Heifers	3,118	2,984	-4%	14,448	13,935	-4%
Young Bulls	1,112	1,253	+13%	5,066	6,075	+20%
Total Prime Beef	8,904	9,014	+1%	41,224	41,641	+1%
Calves	137	160	+16%	542	641	+18%
Cows	3,050	2,715	-11%	9,935	11,349	+14%
Mature Bulls	185	200	+8%	651	815	+25%
Total Beef	12,277	12,088	-2%	52,352	54,446	+4%
SHEEPMEAT						
Lambs & Hoggets	1,304	1,230	-6%	4,400	3,846	-43%
Ewes & Rams	79	66	-16%	383	246	-61%
Total Sheepmeat	1,383	1,296	-6%	1,135	621	-45%
The above figures are provisional; any amendments will be incorporated in the cumulative data (source DARD).						

Market Information August 2016
Page 9

Total Carcase Weight Produced for the Food Chain
Year-to-Date (tonnes – t.)

Month	Prime Cattle		Cows & Bulls		Lambs/Hoggets		Ewes & Rams	
	2015	2016	2015	2016	2015	2016	2015	2016
January	10,829	9,924	2,569	2,772	712	675	127	107
February	8,919	8,906	2,085	2,334	476	422	92	61
March	9,199	10,704	1,882	2,466	482	551	66	47
April	7,850	8,617	1,564	2,188	493	367	79	37
May	8,380	7,577	1,518	1,869	500	465	62	38
June	8,876	9,789	2,148	2,785	1,064	916	103	54
July	7,214	6,644	2,122	2,407	1,038	868	60	51
August	8,904	9,014	3,235	2,915	1,304	1,230	79	66
September								
October								
November								
December								
Total	70,170	71,175	17,124	19,736	6,069	5,494	668	460
Change (t.)	1,004		2,612		-575		-208	
% Change	1.43%		15.25%		-9.48%		-31.11%	

**excludes calves*

Change in Throughput / Production
Last 4 weeks 2015/2016

Change in Throughput / Production 2015/2016

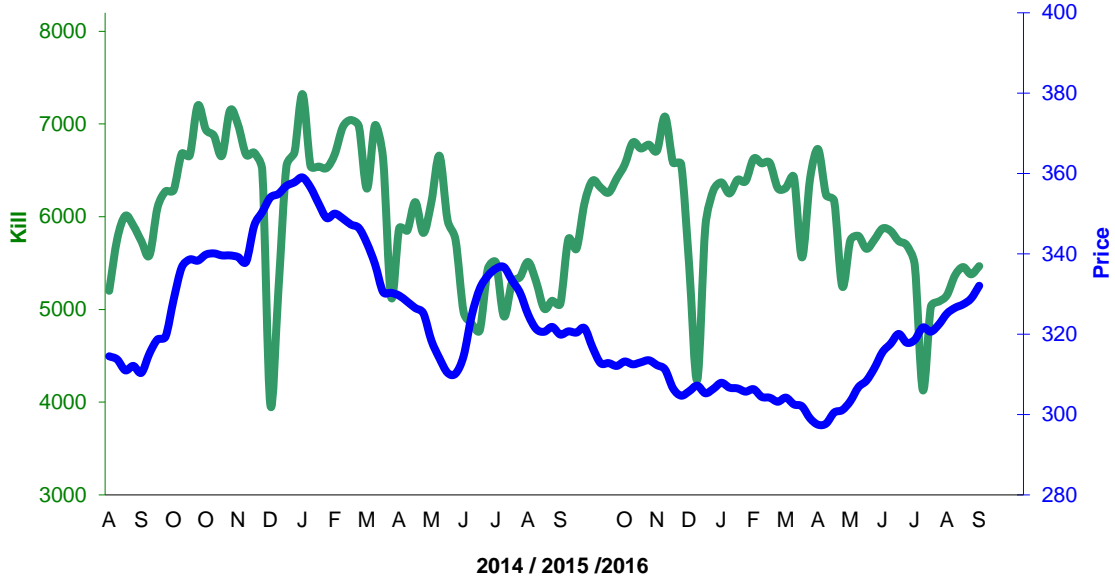
August

2015/2016	Number	Tonnage	ACW Kg
Prime	2.1%	1.2%	-2.93
Cows	-8.4%	-11.0%	-8.89
Total	-0.5%	-1.5%	-3.46
Lamb	-3.4%	-5.7%	-0.50
Ewes and Rams	-14.9%	-16.0%	-0.05
Total Sheep	-3.9%	-6.3%	-0.54

Supply and Price

NI Clean Cattle Kill vs. Average Clean Cattle Price

NI Prime Cattle Kill vs Deadweight Prime Cattle Price



NI Lamb/Hogget Kill vs. Average Lamb / Hogget Price

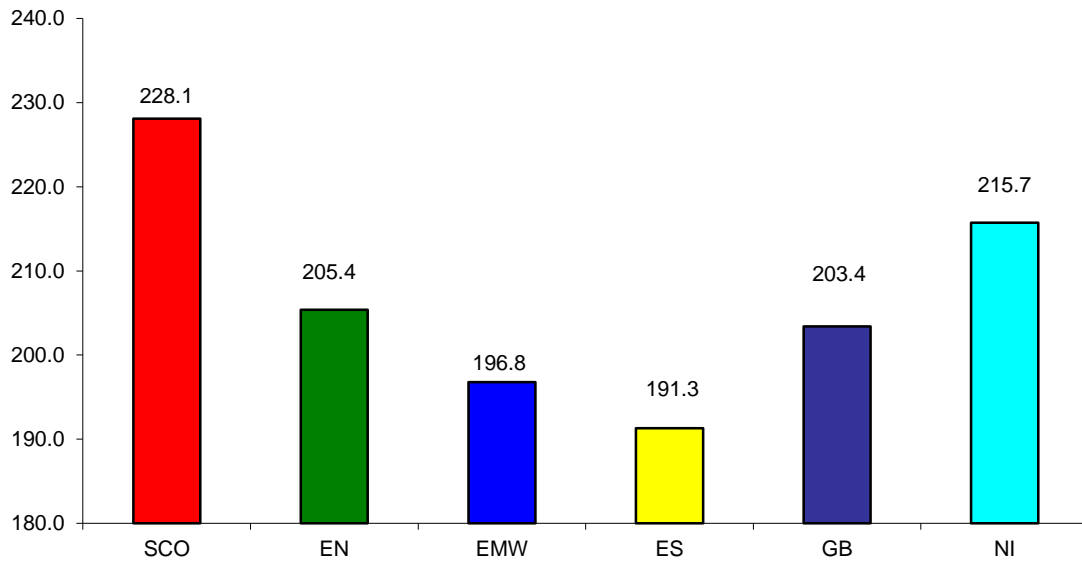
NI Lamb/Hogget Slaughter versus Deadweight Lamb/Hogget Price



Green	Supply (Kill)
Blue	Price

BRITISH ISLES COMPARISONS

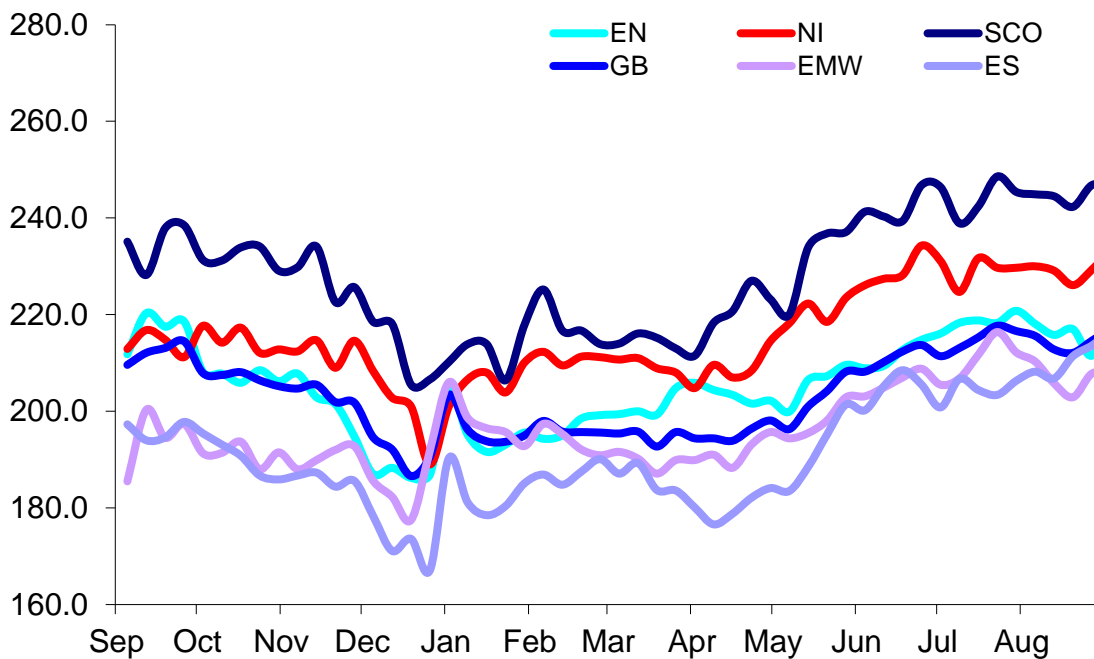
UK Average Cow Prices
52 Weeks to 31 August 2016



SCO	Scotland
EN	England North
EMW	England Midlands and Wales
ES	England South
NI	Northern Ireland
GB	Great Britain

Prices relate to UK Dressing Specification

Weekly UK Cow Prices
52 Weeks to 31 August 2016



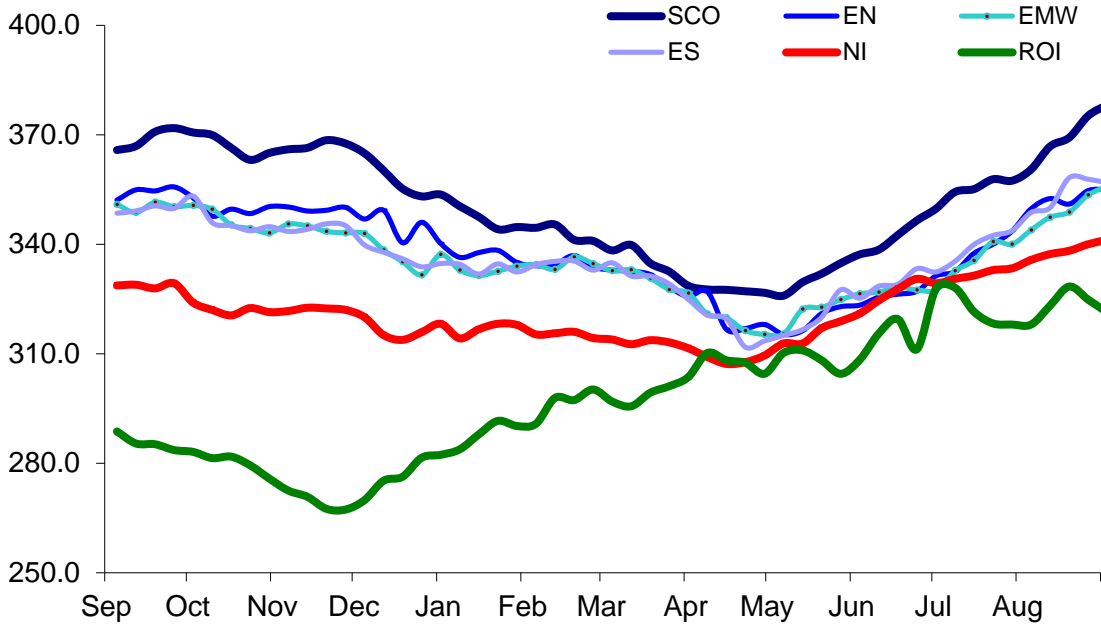
Market Information August 2016

Page 12

Prices relate to UK Dressing Specification

British Isles R3 Steer Price

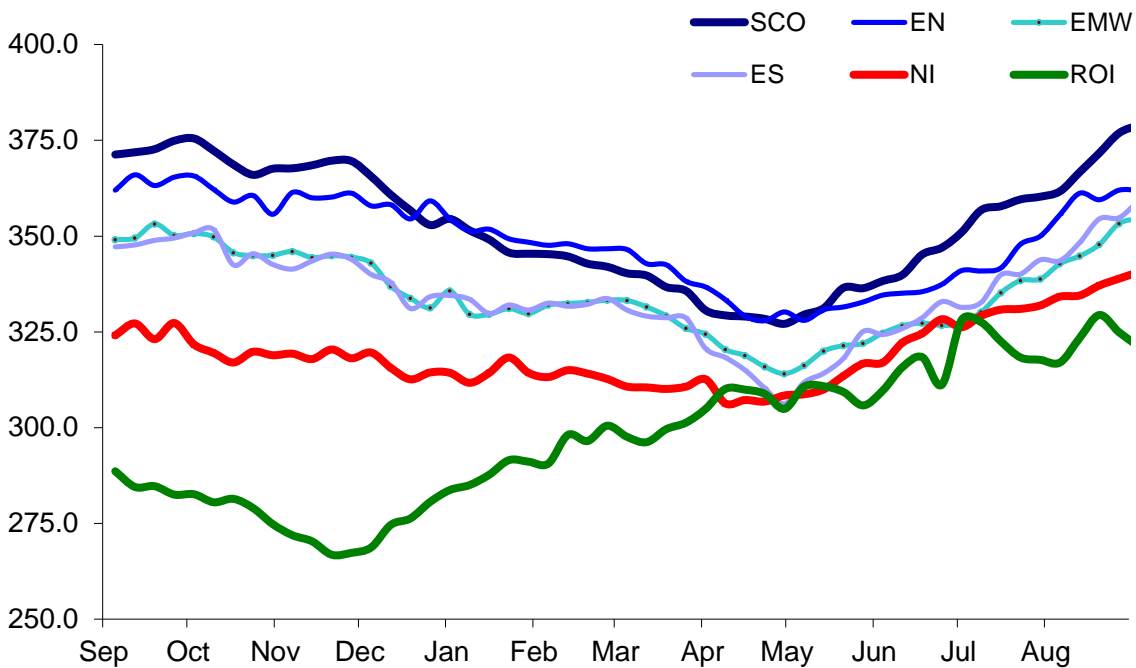
52 Weeks to 31 August 2016



Prices relate to UK Dressing Specification

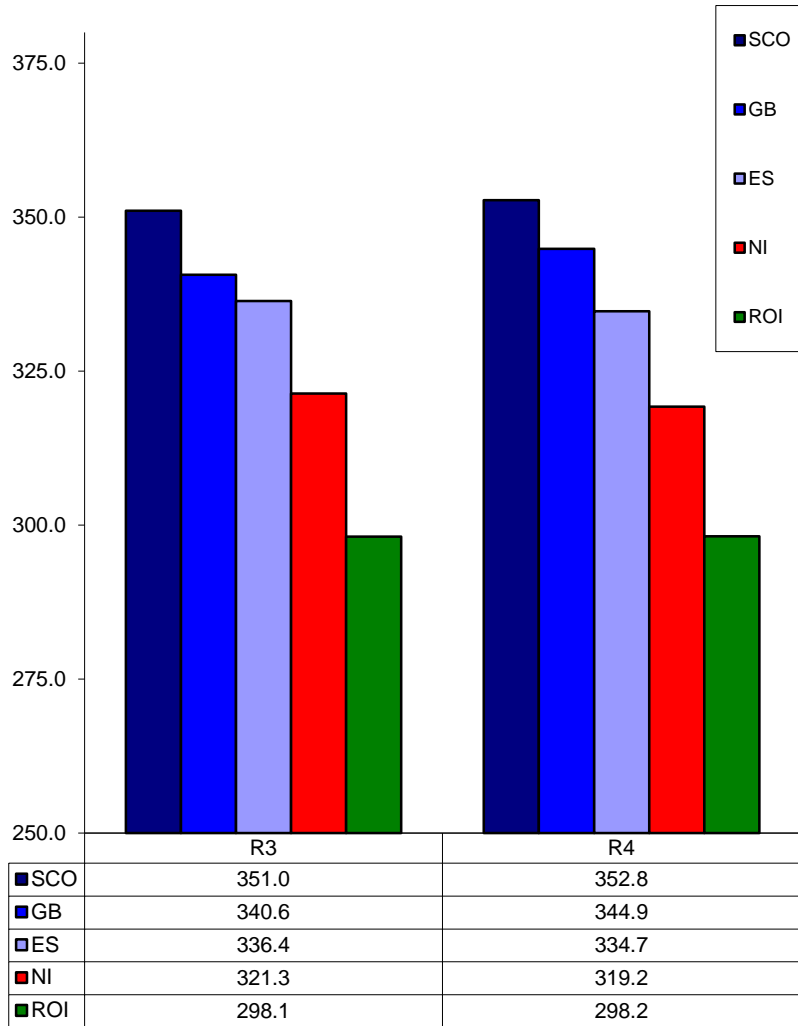
British Isles R4 Steer Price

52 Weeks to 31 August 2016



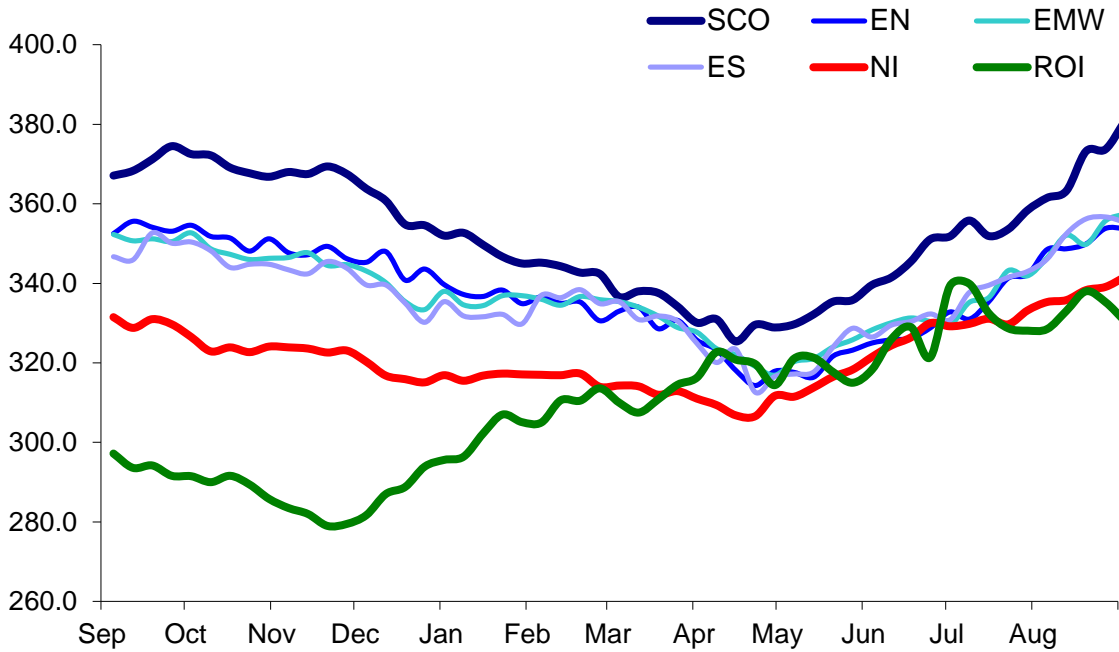
Prices relate to UK Dressing Specification

British Isles Average R3 and R4 Steer price
52 Weeks to 31 August 2016



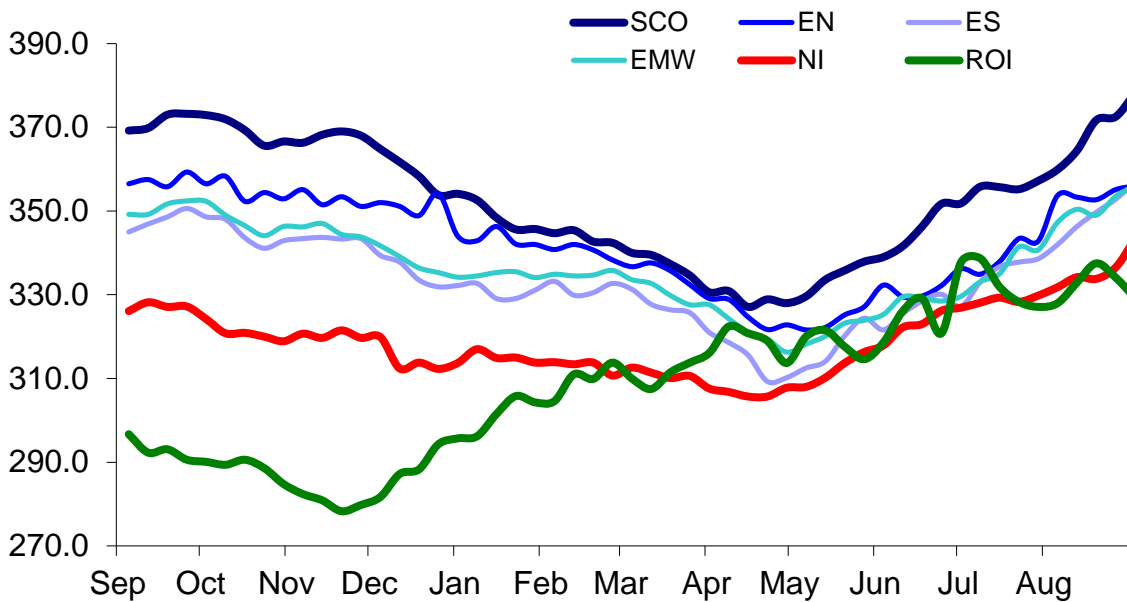
Prices relate to UK Dressing Specification

British Isles R3 Heifer Price
52 Weeks to 31 August 2016



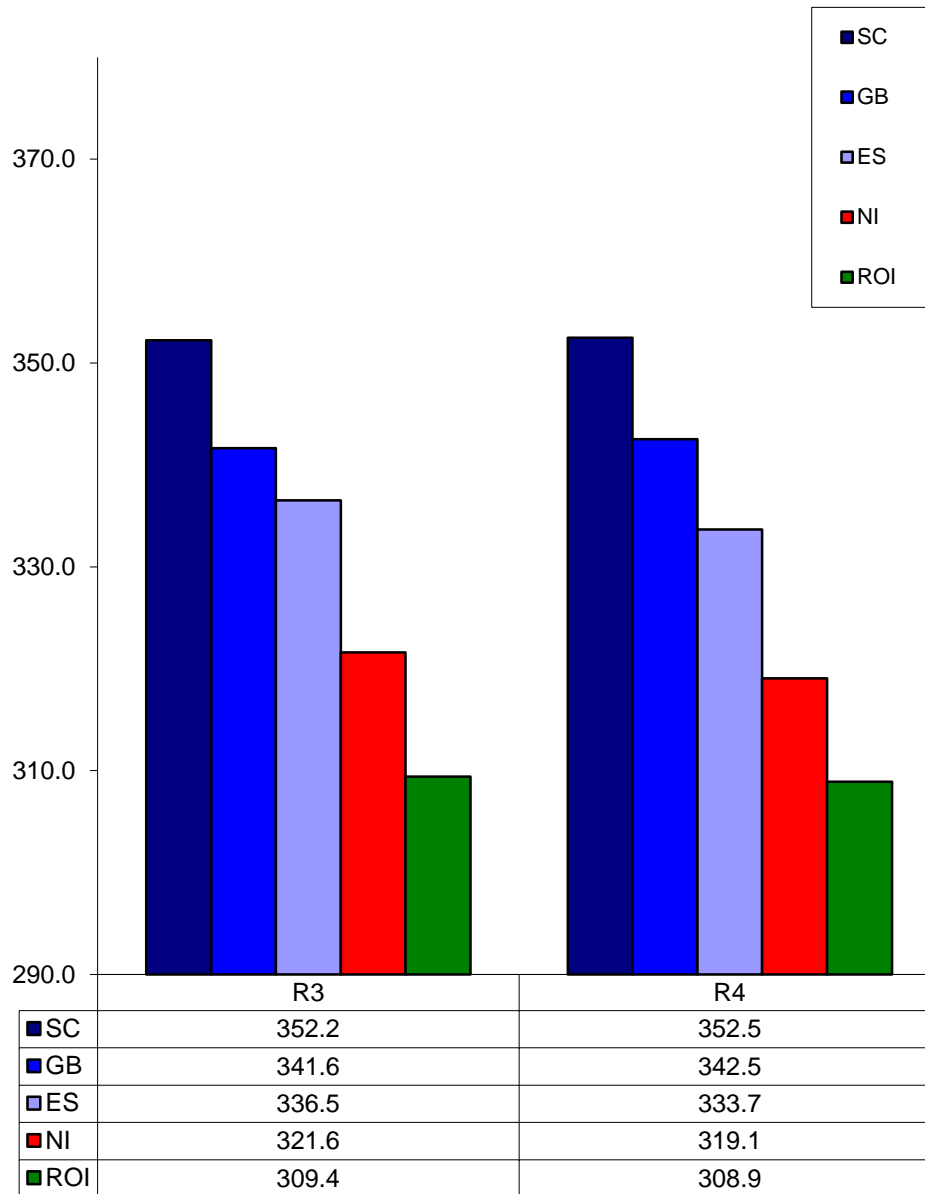
Prices relate to UK Dressing Specification

British Isles R4 Heifer Price
52 Weeks to 31 August 2016



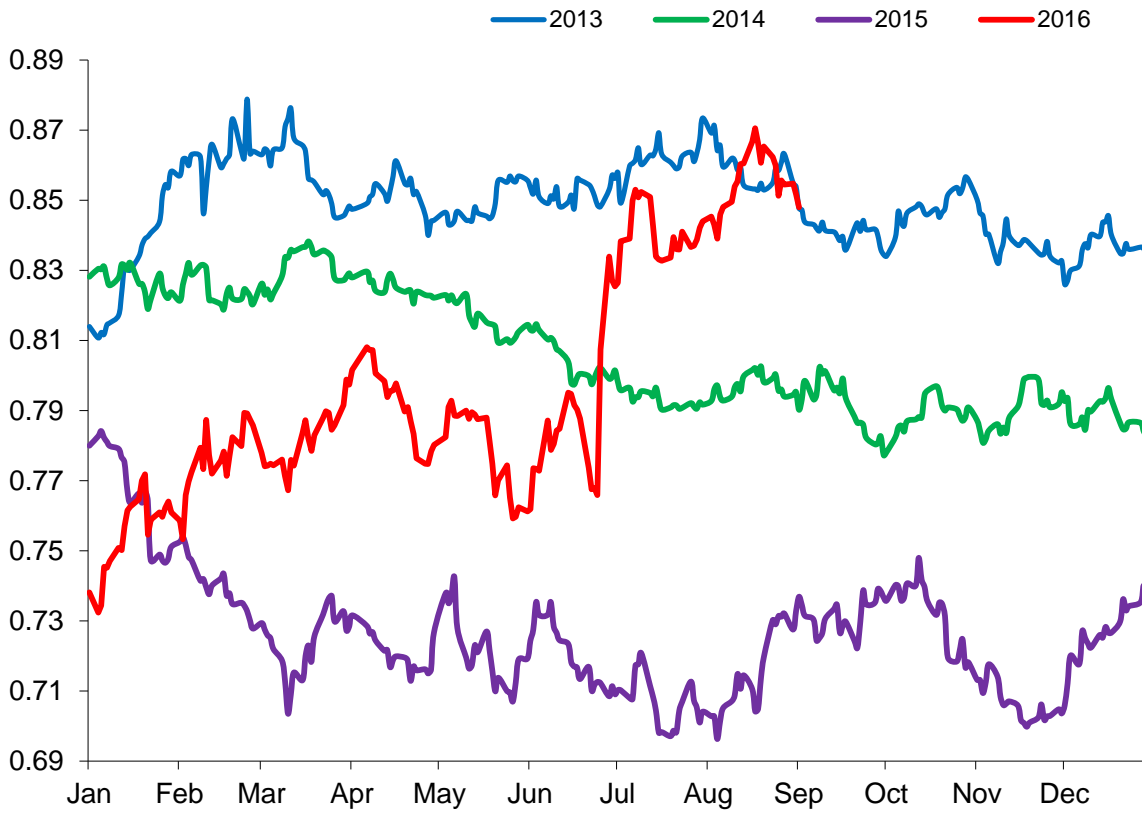
Prices relate to UK Dressing Specification

British Isles Average R3 and R4 Heifer price
52 Weeks to 31 August 2016



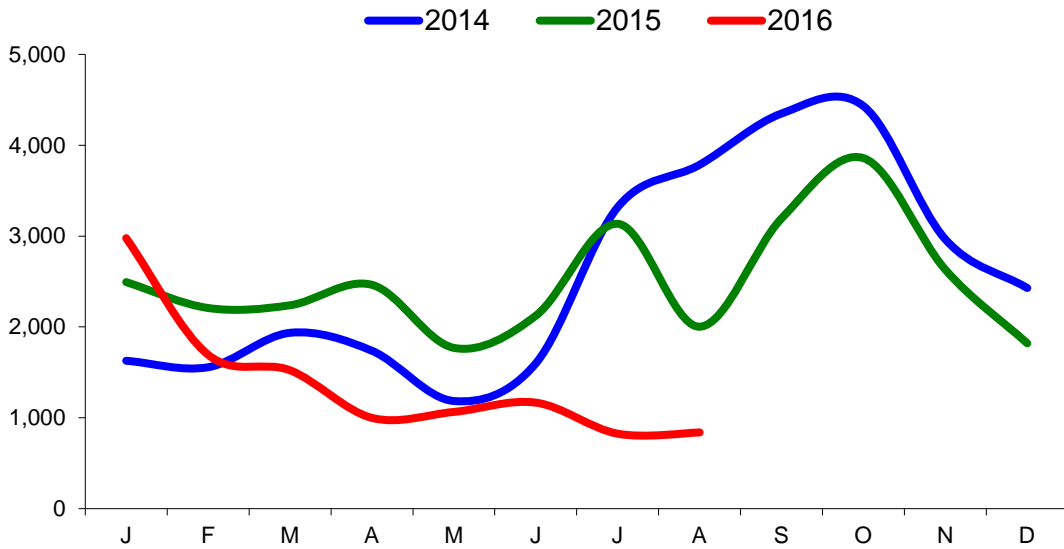
Prices relate to UK Dressing Specification

Exchange Rate £ / Euro
01 January 2013 – 31 August 2016

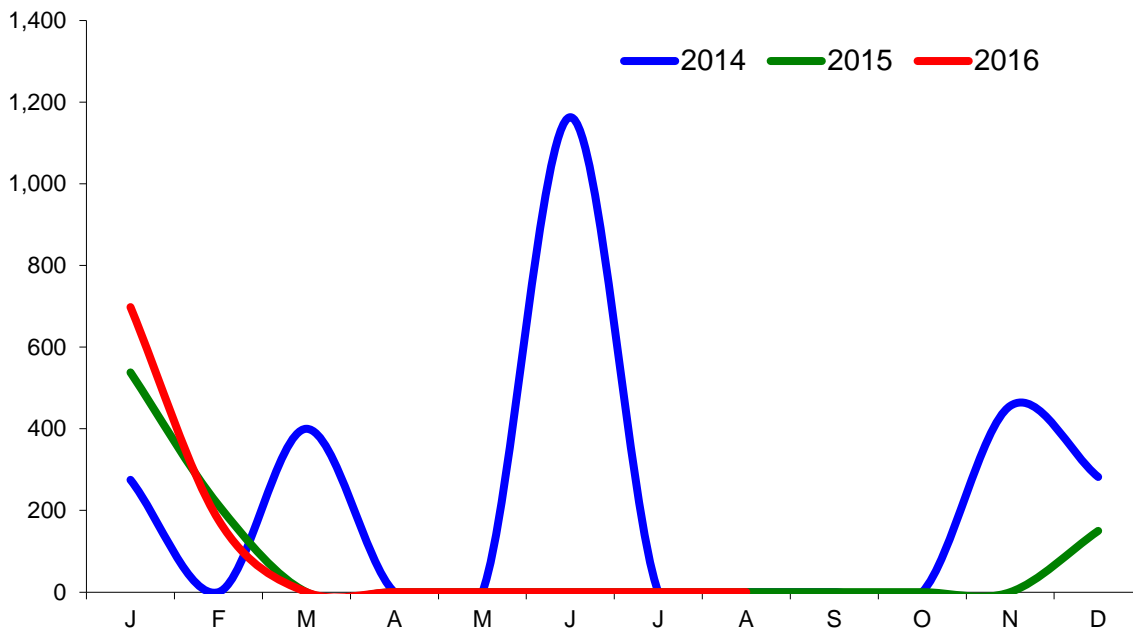


Imports

Monthly Live Imports of Cattle into NI for Direct Slaughter From ROI and GB Combined

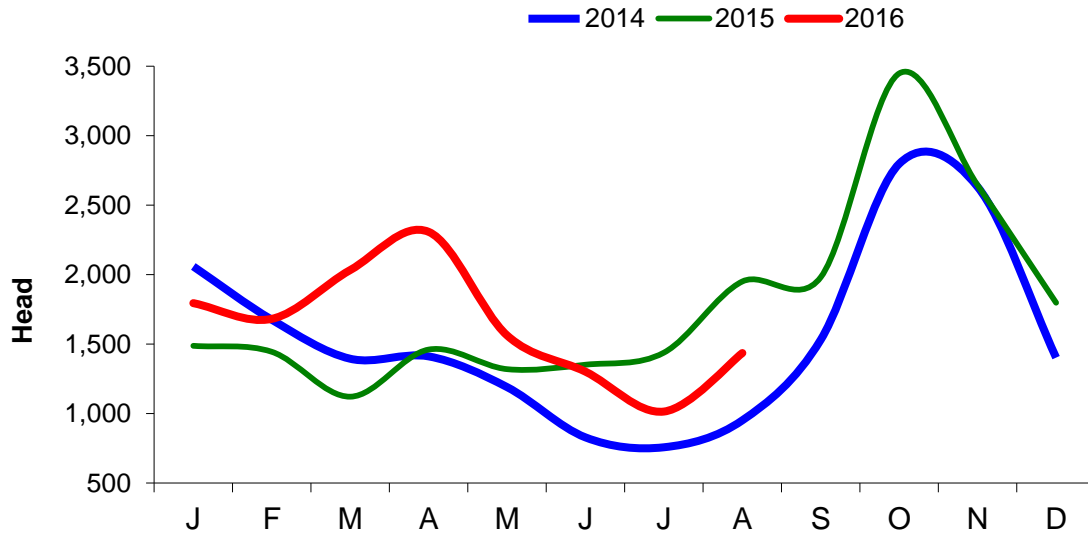


Monthly Live Imports of Sheep into NI for Direct Slaughter From ROI and GB Combined



Exports

Monthly Live Exports of Cattle from NI into ROI and GB



Monthly Live Exports of Sheep from NI into ROI and GB

