

LMC

Monthly Economic Review
July 2016

Contents

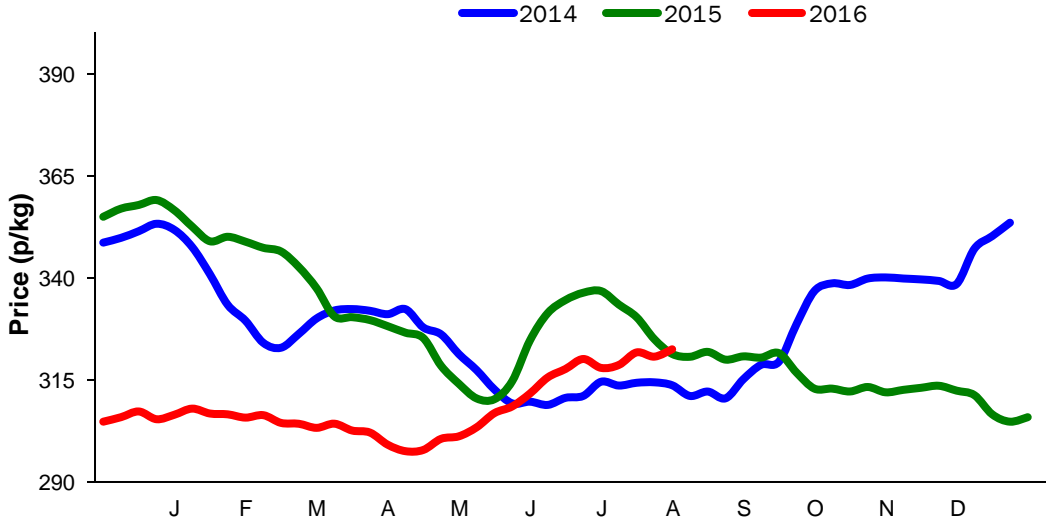
Contents	2
Cattle Prices	4
Average NI Clean Cattle Price	4
Average NI Cow Price	4
Cattle Slaughterings	5
NI Clean Cattle Slaughterings – Cumulative	5
NI Weekly Clean Cattle Slaughterings	5
NI Weekly Cow Slaughterings	5
Sheep Prices	6
Average NI Lamb / Hogget Price	6
Sheep Slaughterings	7
Cumulative Lamb & Hogget Slaughterings	7
Total Weekly Lamb & Hogget Slaughterings	7
Total Weekly Ewe and Ram Slaughterings	7
Total Carcase Weight Produced for the Food Chain	8
Change in Throughput / Production	9
Supply and Price	10
NI Lamb/Hogget Kill vs. Average Lamb / Hogget Price	10
NI Clean Cattle Kill vs. Average Clean Cattle Price	10
British Isles Price Comparisons	11
UK Average Cow Prices	11
Weekly UK Cow Prices	11
British Isles R3 Steer Price	12
British Isles R4 Steer Price	12
British Isles Average R3 and R4 Steer price	13
British Isles R3 Heifer Price	14
British Isles R4 Heifer Price	14
British Isles Average R3 and R4 Heifer price	15
Exchange Rate £ / Euro	16
Imports	17
Monthly Live Imports of Cattle into NI for Direct Slaughter	17
Monthly Live Imports of Sheep into NI for Direct Slaughter	17
Exports	18
Monthly Live Exports of Cattle from NI into RoI and GB	18
Monthly live Exports of Sheep from NI into RoI and GB	18

Market Information July 2016

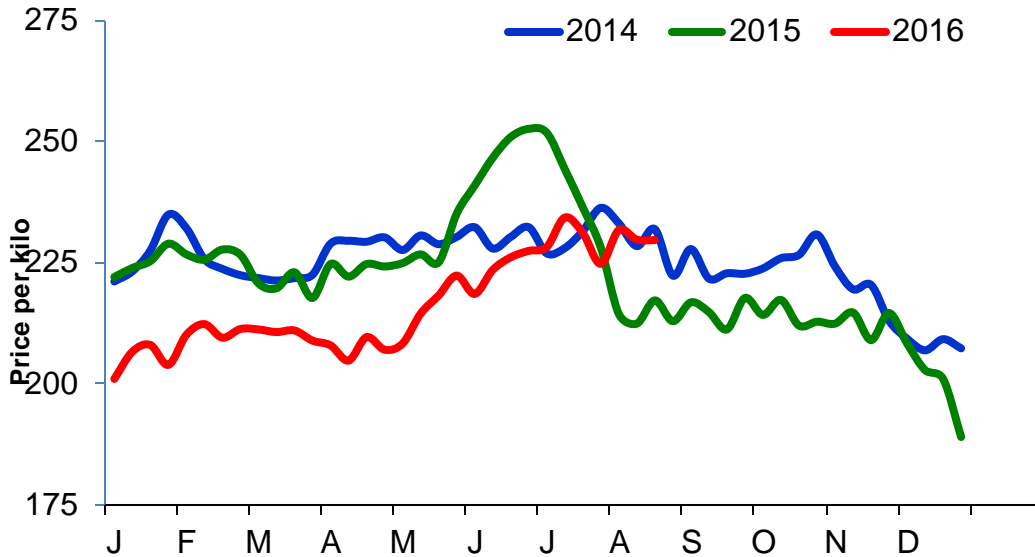
Page 3

Cattle Prices

Average NI Clean Cattle Price

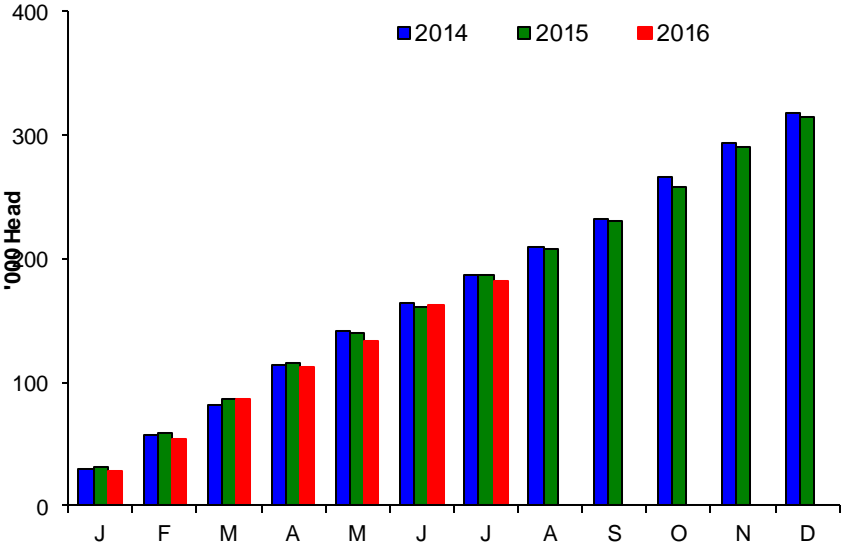


Average NI Cow Price

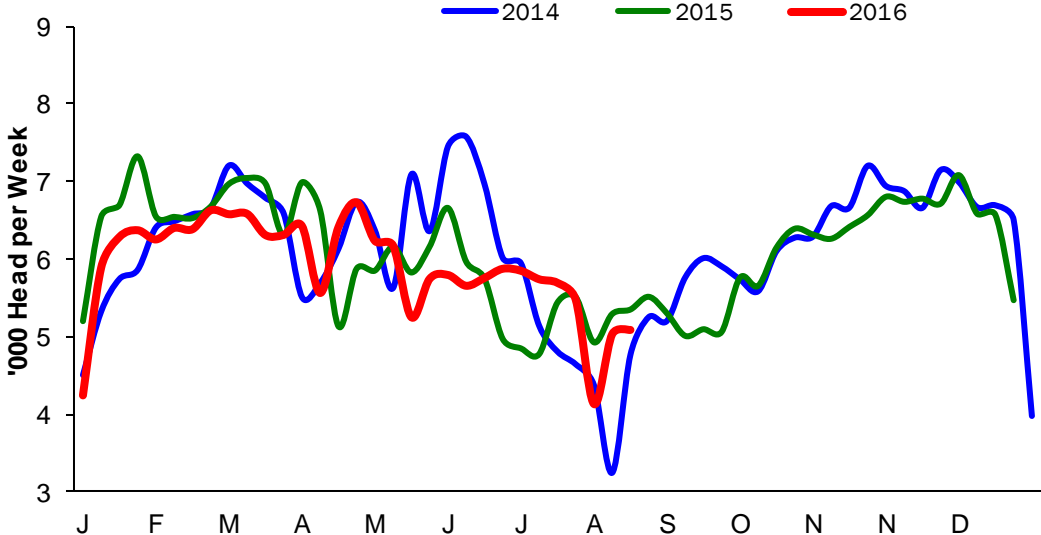


Cattle Slaughtering

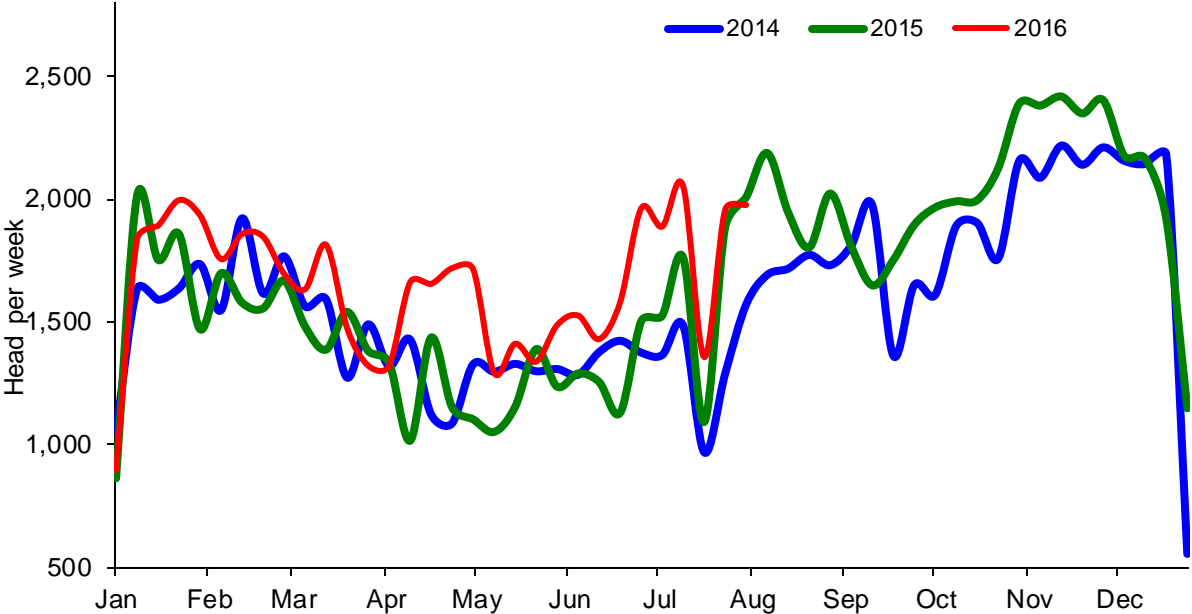
NI Clean Cattle Slaughtering – Cumulative



NI Weekly Clean Cattle Slaughtering

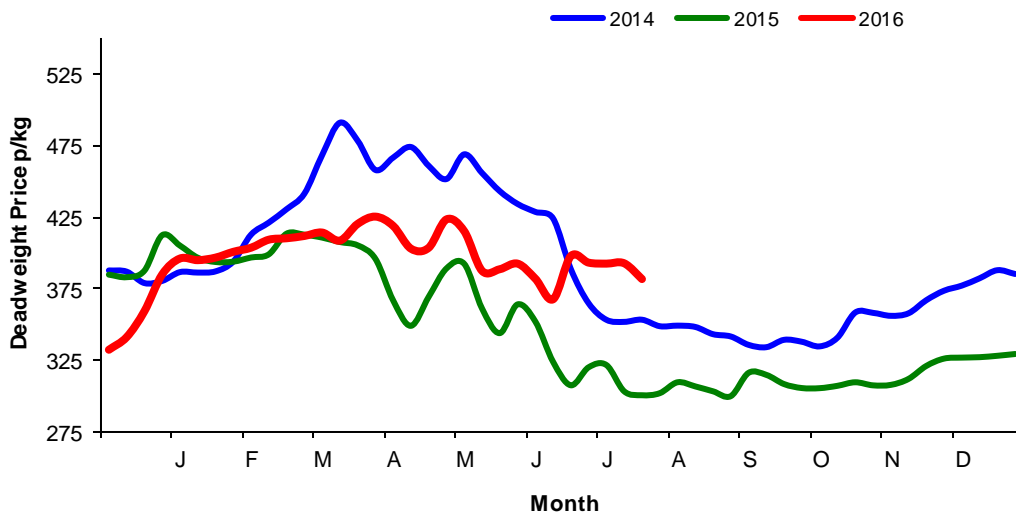


NI Weekly Cow Slaughtering



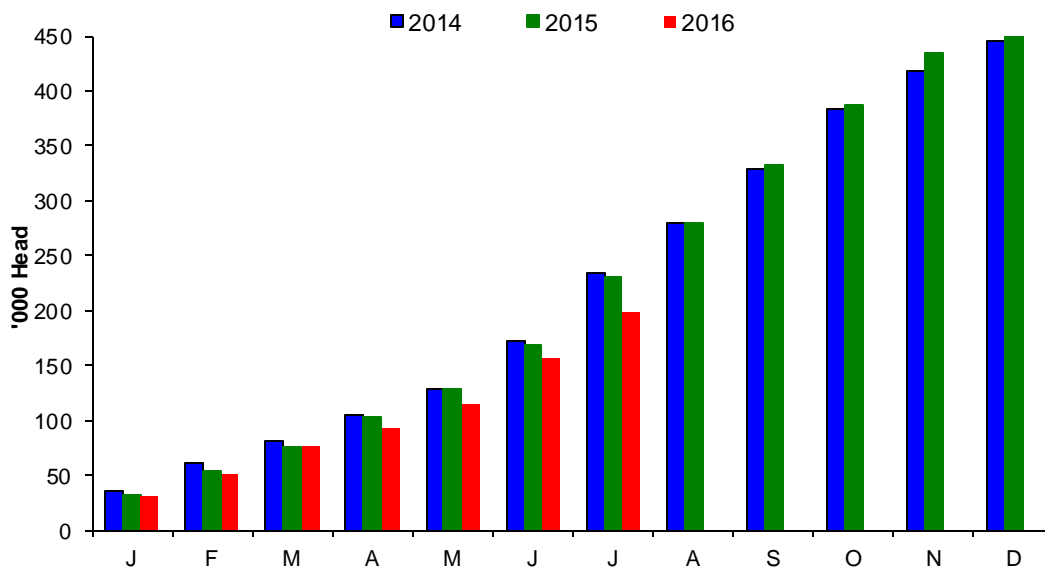
Sheep Prices

Average Deadweight NI Hogget / Lamb Price

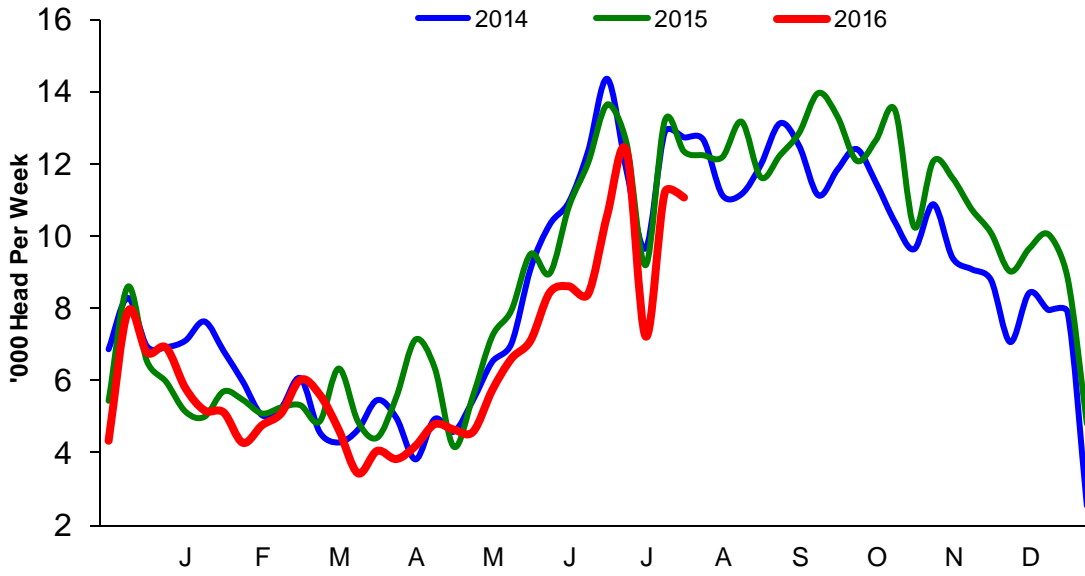


Sheep Slaughtering

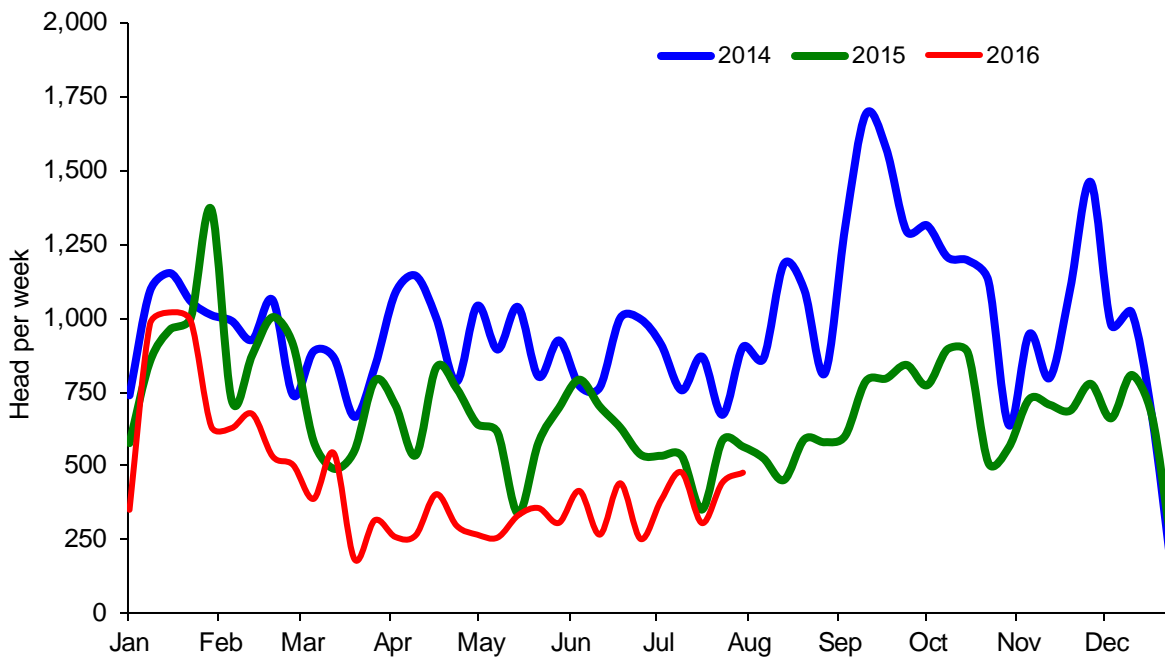
Cumulative Lamb & Hogget Slaughtering



Total Weekly Lamb & Hogget Slaughtering



Total Weekly Ewe and Ram Slaughtering



Market Information July 2016

Page 8

NI CATTLE AND SHEEP SLAUGHTERINGS FOR THE FOODCHAIN						
	July			Year to Date		
	(4 weeks ended 30/07/16)			(17 weeks ended 30/07/16)		
	Jul-15	Jul-16	% Change	2015	2016	Change
CATTLE						
Steers	10,070	9,452	-6%	48,454	47,563	-2%
Heifers	7,714	6,925	-10%	35,621	34,423	-3%
Young Bulls / Calves	3,376	3,346	-1%	11,609	14,619	+26%
Total Prime Cattle	21,160	19,723	-7%	95,684	96,605	+1%
Calves	451	480	+6%	1,827	2,244	+0%
Cows	6,269	7,347	+17%	22,330	28,024	+25%
Mature Bulls	329	325	-1%	1,059	1,384	+31%
Total Cattle	28,209	27,875	-1%	120,900	128,257	+6%
SHEEP						
Lambs & Hoggets	48,641	41,873	-14%	143,222	123,466	-14%
Ewes & Rams	2,007	1,705	-15%	10,374	5,950	-43%
Total Sheep	50,648	43,578	-14%	153,596	129,416	-16%
The above figures are provisional; any amendments will be incorporated in the cumulative data (source DARD).						

NI BEEF AND SHEEPMEAT PRODUCTION - FOODCHAIN						
	July			Year to Date		
	(4 weeks ended 30/07/16)			(17 weeks ended 30/07/16)		
	Jul-15	Jul-16	% Change	2015	2016	Change
BEEF						
Steers	3,566	3,340	-6%	17,036	16,854	-1%
Heifers	2,468	2,188	-11%	11,330	10,951	-3%
Young Bulls	1,180	1,116	-5%	3,954	4,822	+22%
Total Prime Beef	7,214	6,644	-8%	32,320	32,627	+1%
Calves	100	101	+2%	405	481	+19%
Cows	1,975	2,253	+14%	6,886	8,634	+25%
Mature Bulls	147	154	+5%	466	615	+32%
Total Beef	9,436	9,153	-3%	40,076	42,358	+6%
SHEEPMEAT						
Lambs & Hoggets	1,038	868	-16%	3,096	2,616	-43%
Ewes & Rams	60	51	-16%	305	179	-61%
Total Sheepmeat	1,099	919	-16%	1,135	621	-45%
The above figures are provisional; any amendments will be incorporated in the cumulative data (source DARD).						

Market Information July 2016
Page 9

Total Carcase Weight Produced for the Food Chain
Year-to-Date (tonnes – t.)

Month	Prime Cattle		Cows & Bulls		Lambs/Hoggets		Ewes & Rams	
	2015	2016	2015	2016	2015	2016	2015	2016
January	10,829	9,924	2,569	2,772	712	675	127	107
February	8,919	8,906	2,085	2,334	476	422	92	61
March	9,199	10,704	1,882	2,466	482	551	66	47
April	7,850	8,617	1,564	2,188	493	367	79	37
May	8,380	7,577	1,518	1,869	500	465	62	38
June	8,876	9,789	2,148	2,785	1,064	916	103	54
July	7,214	6,644	2,122	2,407	1,038	868	60	51
August								
September								
October								
November								
December								
Total	61,266	62,161	13,889	16,821	4,765	4,264	589	394
Change (t.)	895		2,933		-501		-195	
% Change	1.46%		21.12%		-10.51%		-33.12%	

**excludes calves*

Change in Throughput / Production
Last 4 weeks 2015/2016

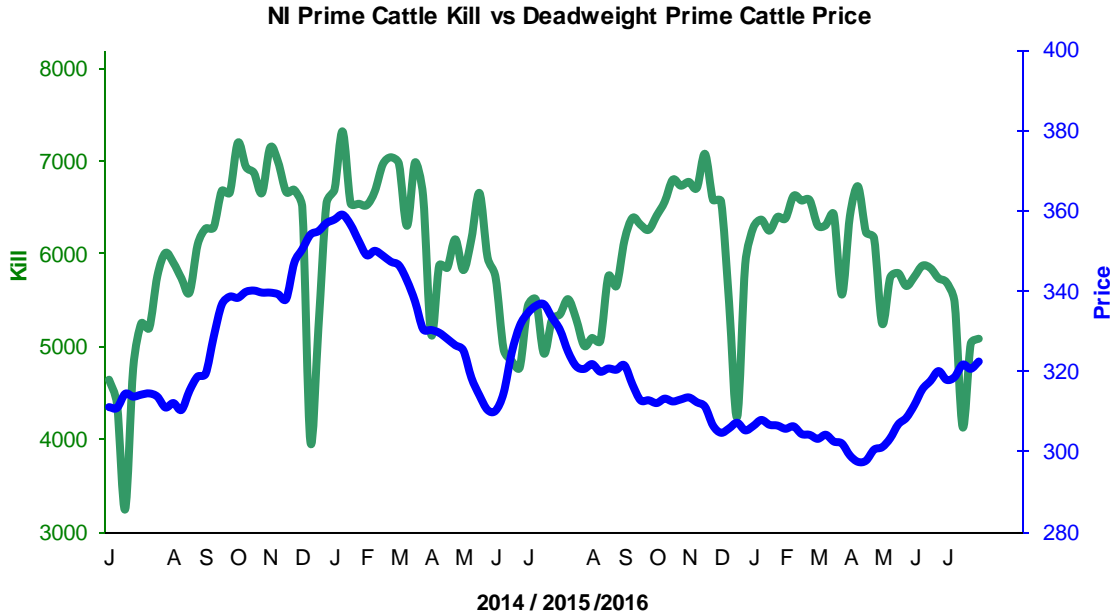
Change in Throughput / Production 2015/2016

July

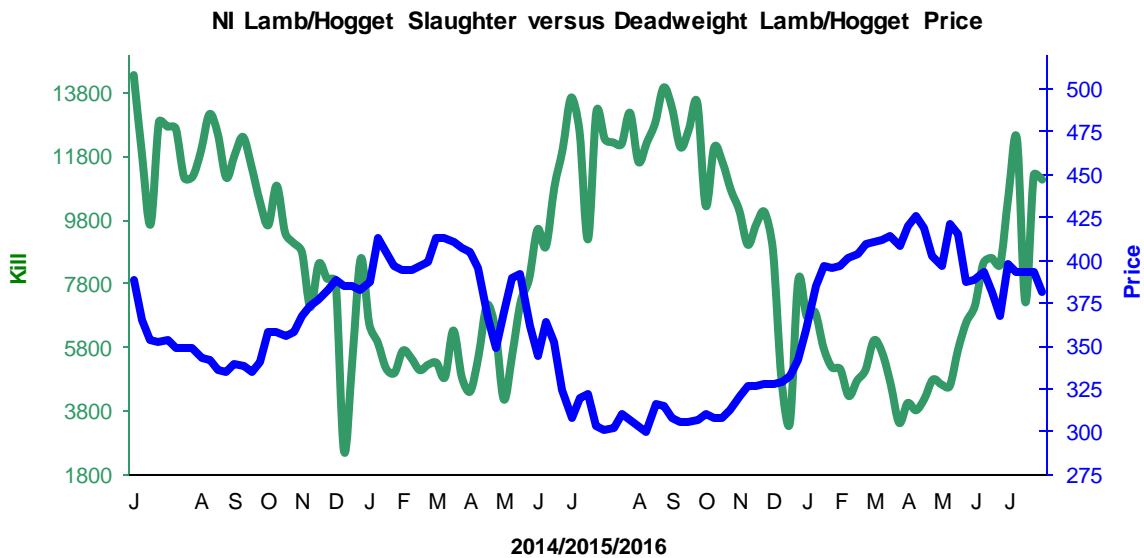
2015/2016	Number	Tonnage	ACW Kg
Prime	-6.8%	-7.9%	-4.31
Cows	17.2%	14.1%	-8.73
Total	-1.2%	-3.0%	-6.29
Lamb	-13.9%	-16.4%	-0.62
Ewes and Rams	-15.0%	-15.7%	-0.40
Total Sheep	-14.0%	-16.3%	-0.62

Supply and Price

NI Clean Cattle Kill vs. Average Clean Cattle Price



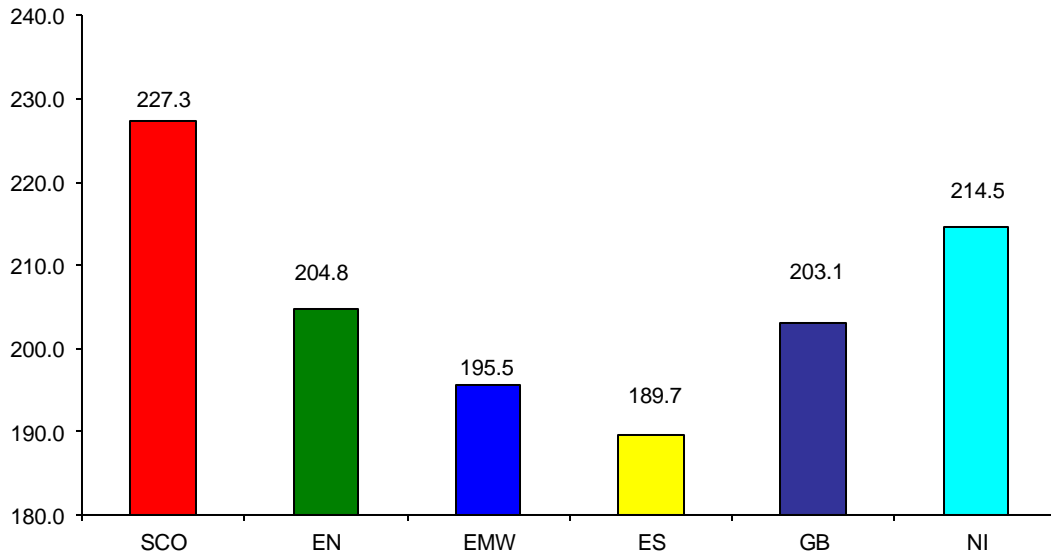
NI Lamb/Hogget Kill vs. Average Lamb / Hogget Price



Green	Supply (Kill)
Blue	Price

BRITISH ISLES COMPARISONS

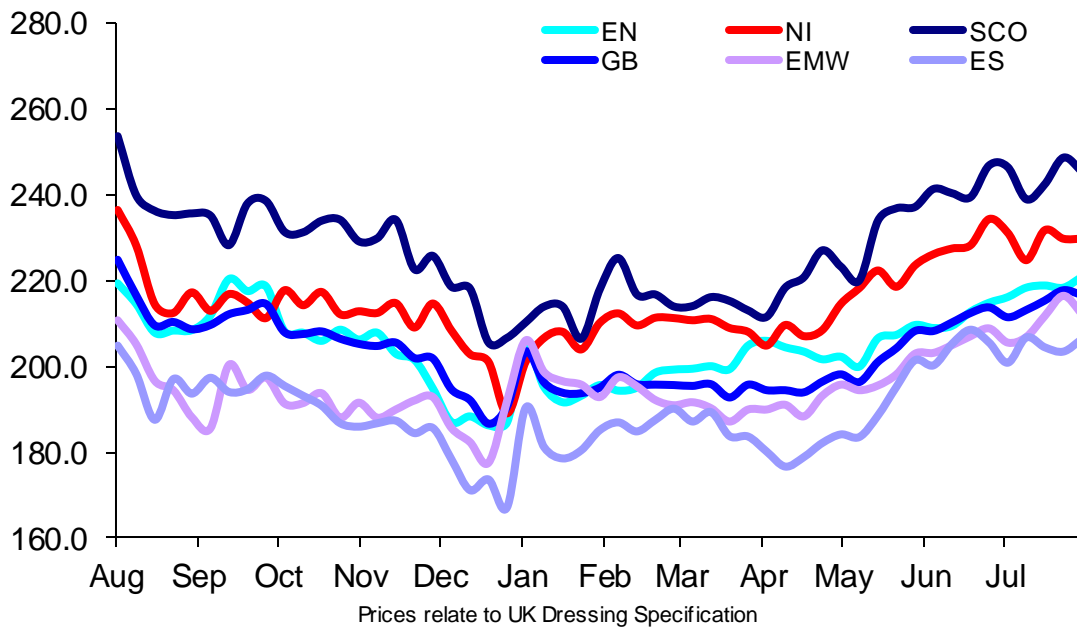
UK Average Cow Prices
52 Weeks to 30 July 2016



SCO	Scotland
EN	England North
EMW	England Midlands and Wales
ES	England South
NI	Northern Ireland
GB	Great Britain

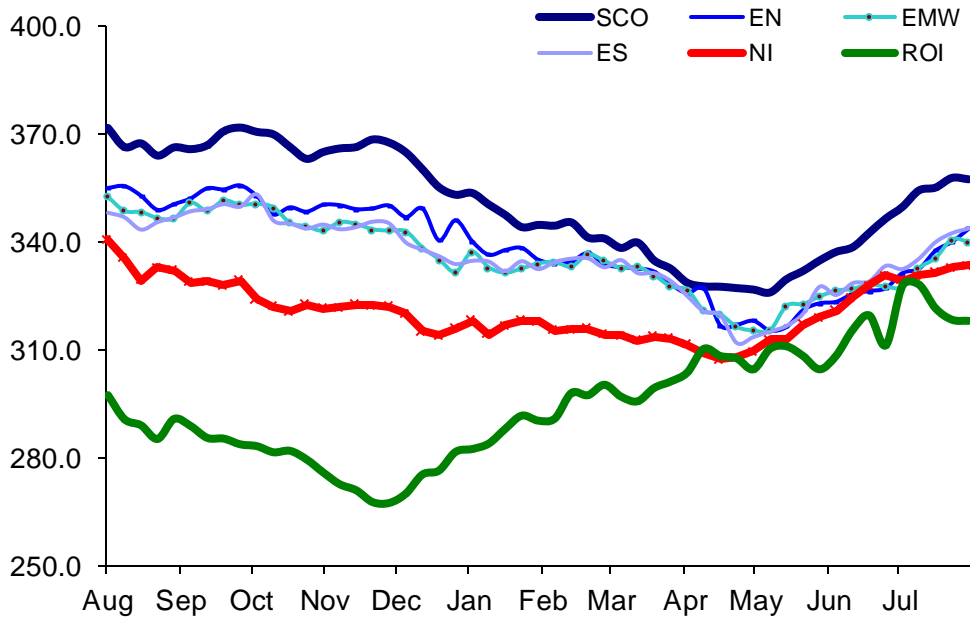
Prices relate to UK Dressing Specification

Weekly UK Cow Prices
52 Weeks to 30 July 2016



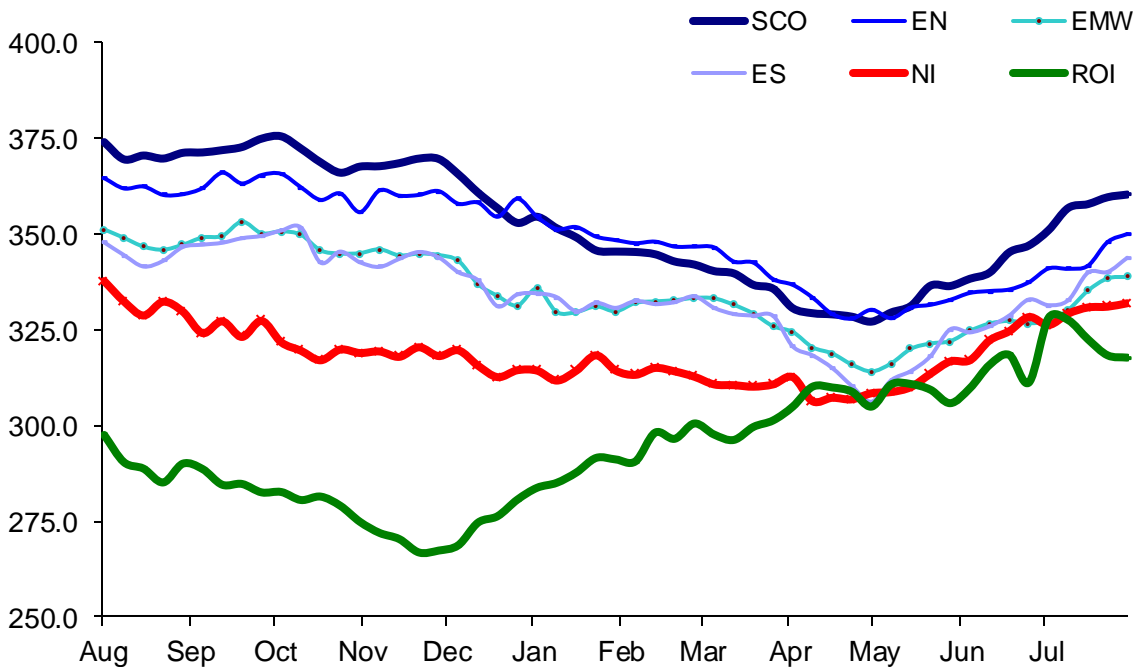
Market Information July 2016
Page 12

British Isles R3 Steer Price
52 Weeks to 30 July 2016



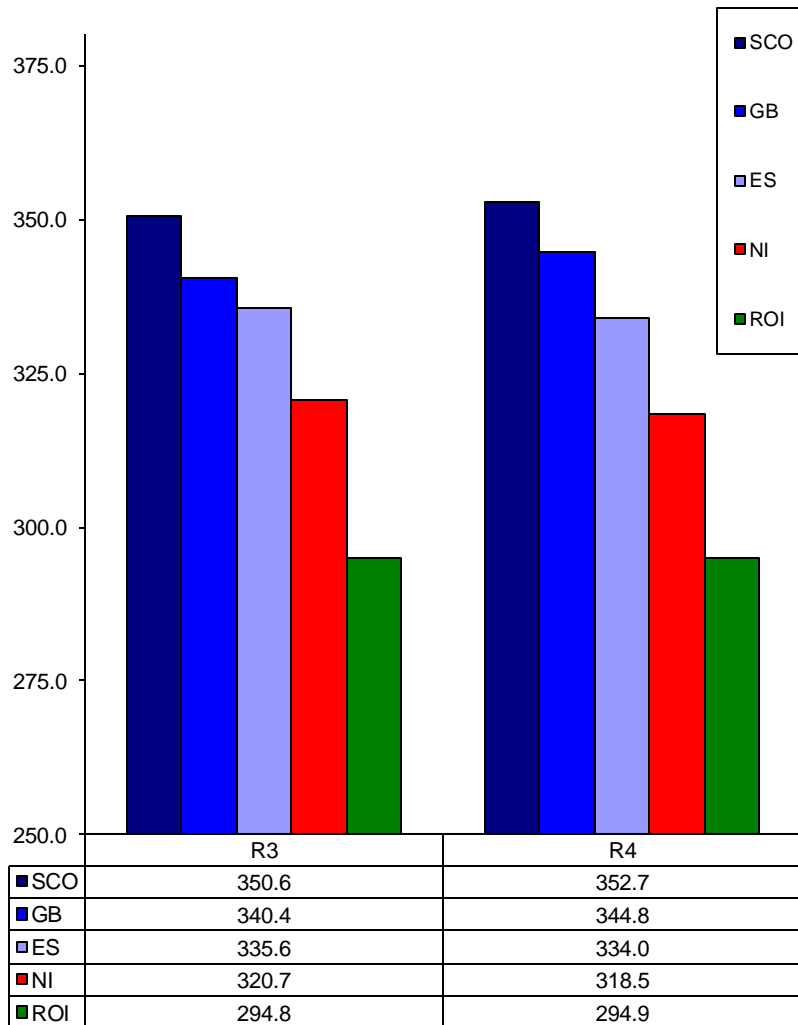
Prices relate to UK Dressing Specification

British Isles R4 Steer Price
52 Weeks to 30 July 2016



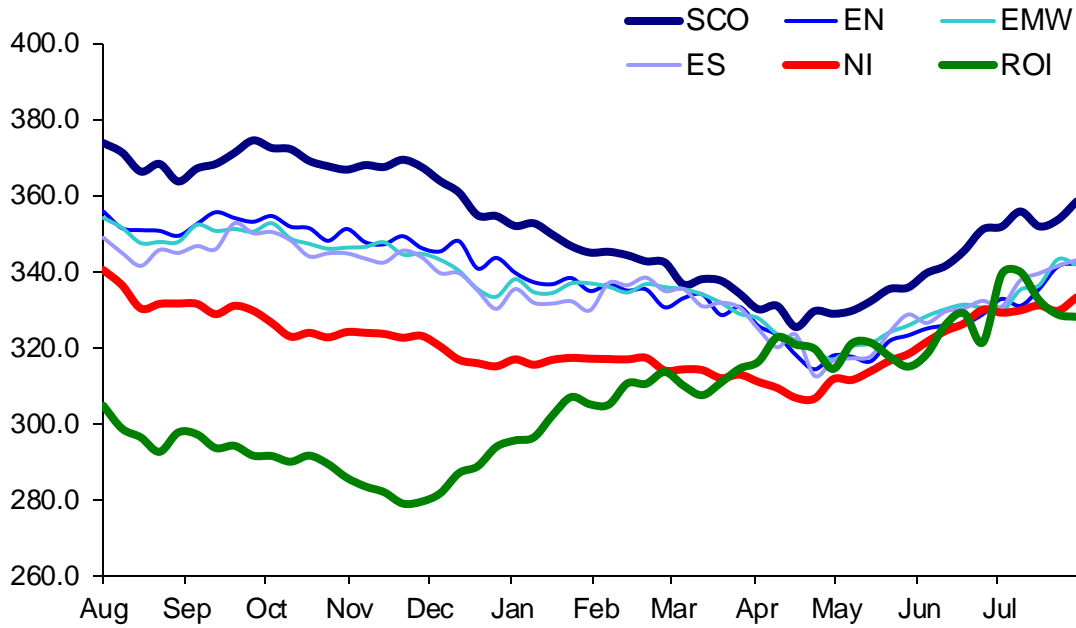
Prices relate to UK Dressing Specification

British Isles Average R3 and R4 Steer price
52 Weeks to 30 July 2016



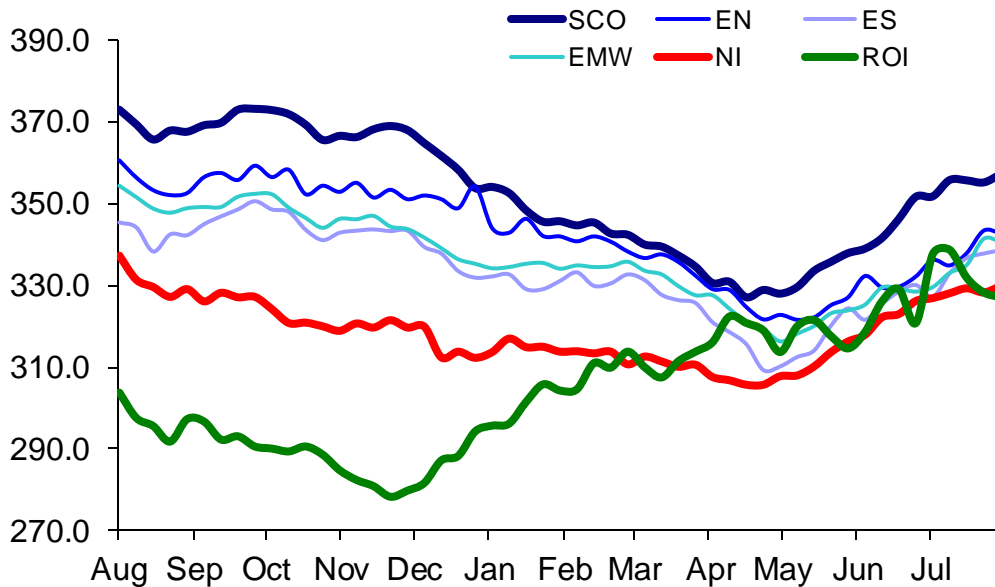
Prices relate to UK Dressing Specification

British Isles R3 Heifer Price
52 Weeks to 30 July 2016



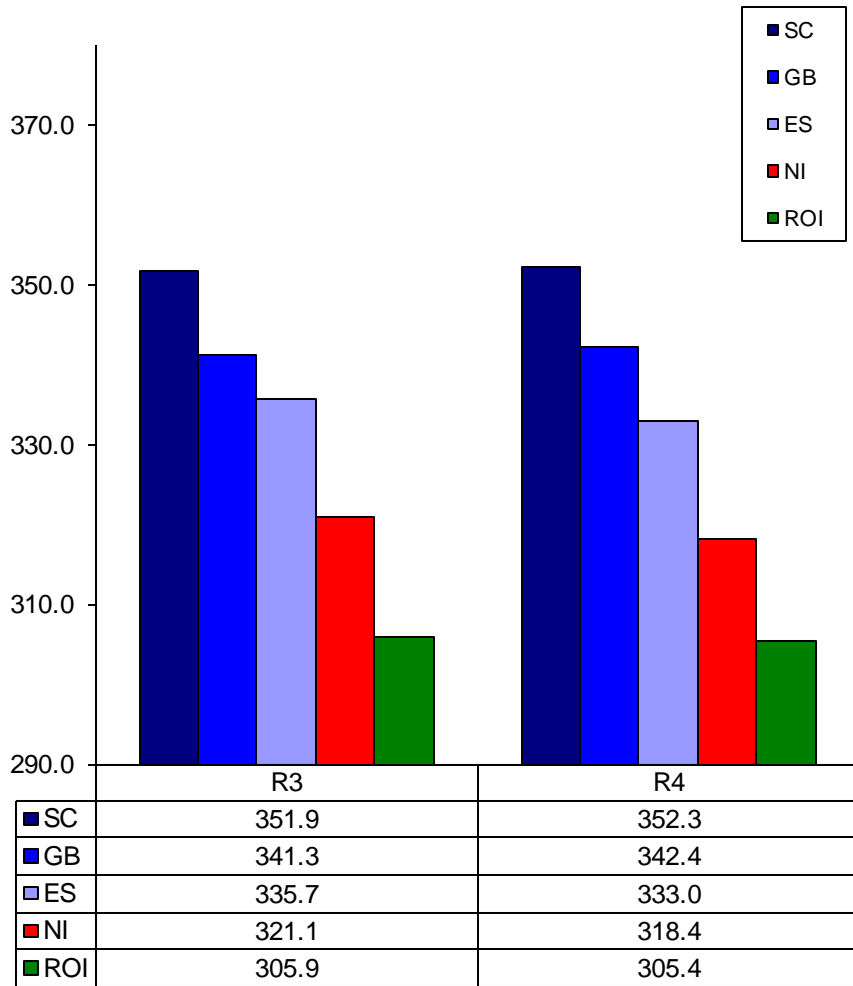
Prices relate to UK Dressing Specification

British Isles R4 Heifer Price
52 Weeks to 30 July 2016



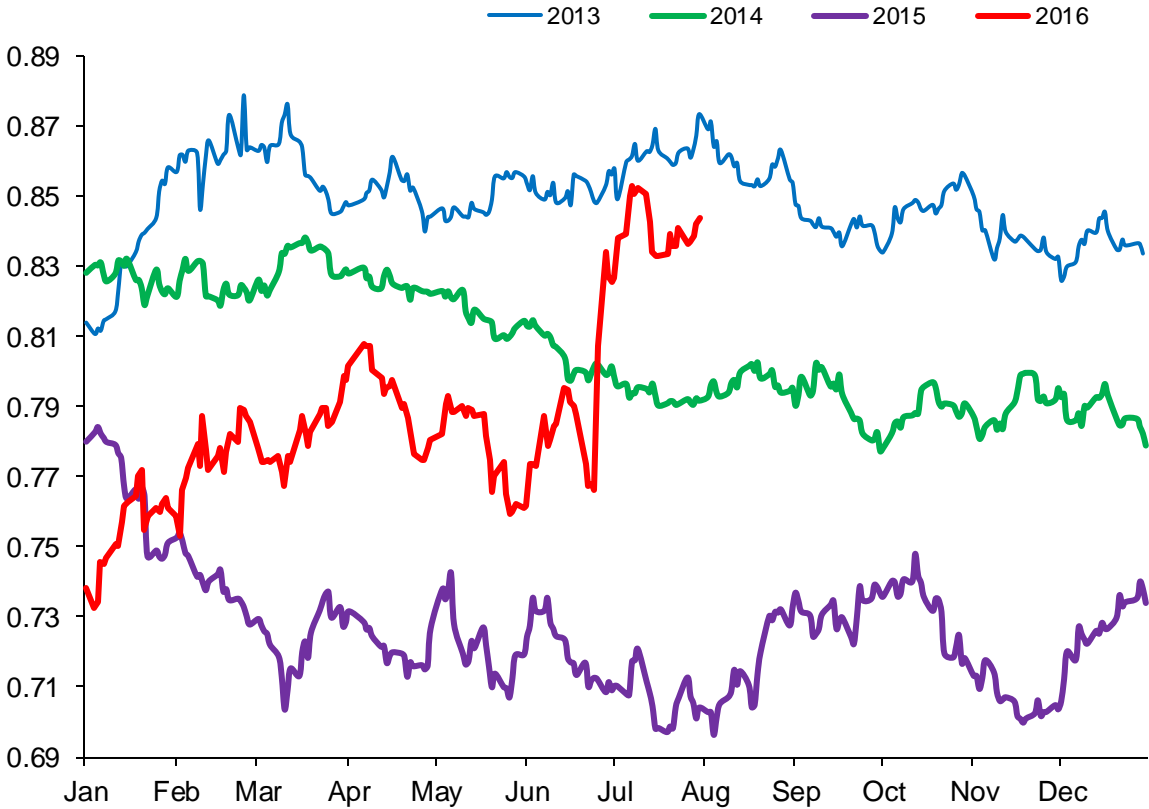
Prices relate to UK Dressing Specification

British Isles Average R3 and R4 Heifer price
52 Weeks to 30 July 2016



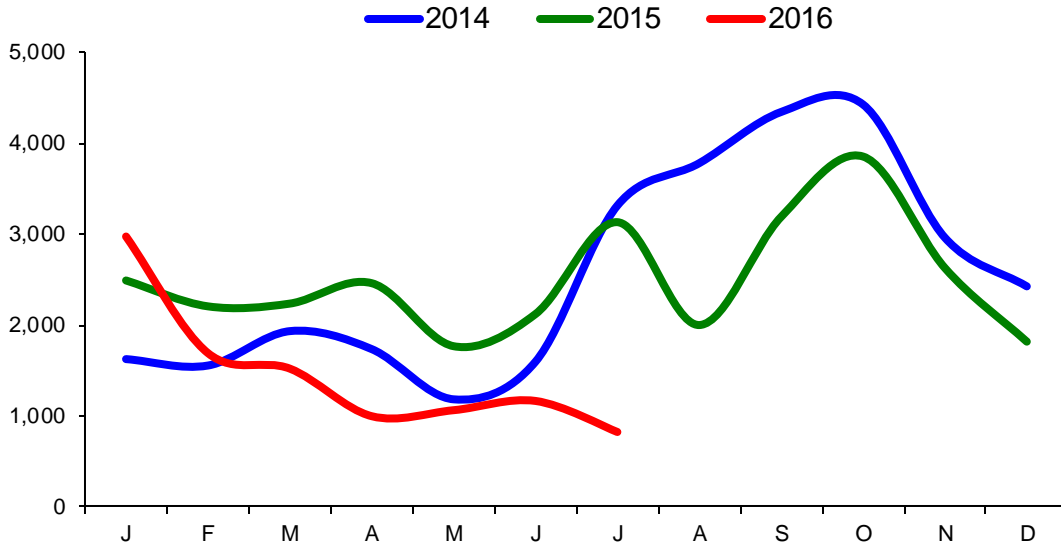
Prices relate to UK Dressing Specification

Exchange Rate £ / Euro
01 January 2013 – 30 July 2016

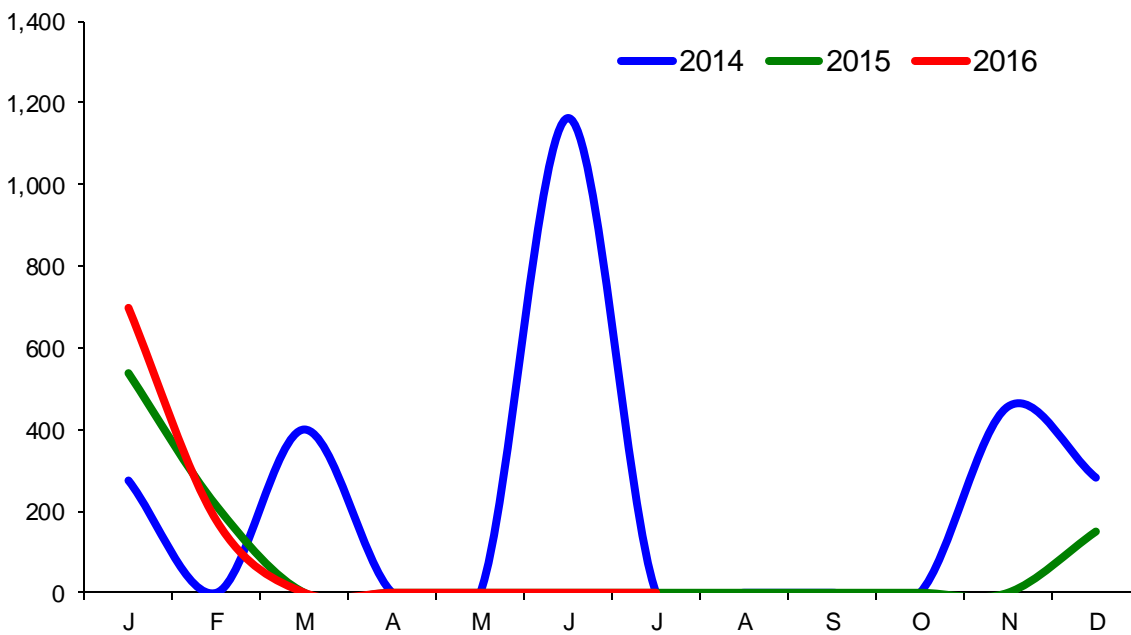


Imports

Monthly Live Imports of Cattle into NI for Direct Slaughter
From ROI and GB Combined

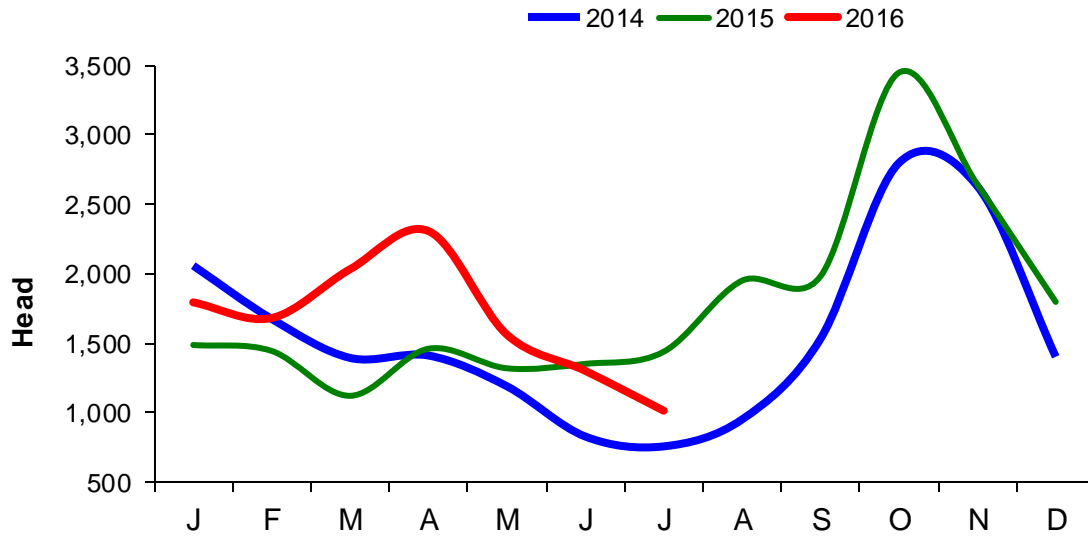


Monthly Live Imports of Sheep into NI for Direct Slaughter
From ROI and GB Combined



Exports

Monthly Live Exports of Cattle from NI into ROI and GB



Monthly Live Exports of Sheep from NI into ROI and GB

