

LMC

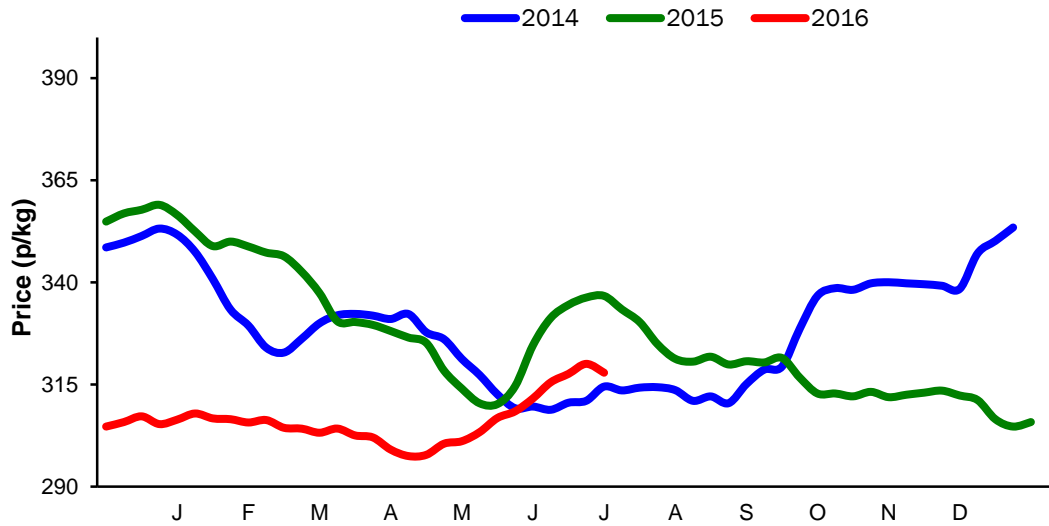
**Monthly Economic Review
June 2016**

Contents

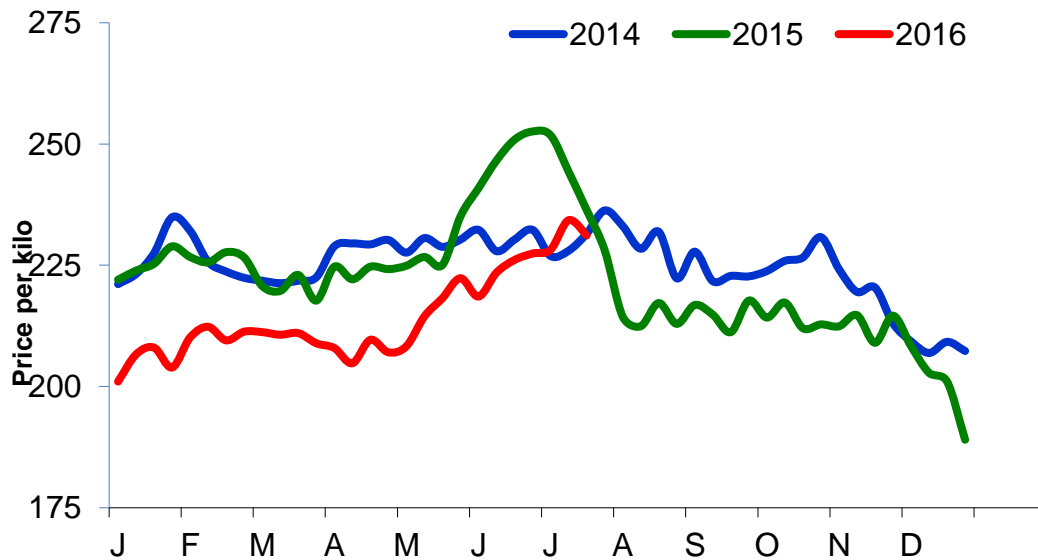
Contents	2
Cattle Prices.....	4
Average NI Clean Cattle Price.....	4
Average NI Cow Price	4
Cattle Slaughtering.....	5
NI Clean Cattle Slaughtering – Cumulative	5
NI Weekly Clean Cattle Slaughtering	5
NI Weekly Cow Slaughtering.....	5
Sheep Prices.....	6
Average NI Lamb / Hogget Price	6
Sheep Slaughtering.....	7
Cumulative Lamb & Hogget Slaughtering.....	7
Total Weekly Lamb & Hogget Slaughtering	7
Total Weekly Ewe and Ram Slaughtering	7
Total Carcase Weight Produced for the Food Chain.....	8
Change in Throughput / Production	9
Supply and Price.....	10
NI Lamb/Hogget Kill vs. Average Lamb / Hogget Price	10
NI Clean Cattle Kill vs. Average Clean Cattle Price.....	10
British Isles Price Comparisons	11
UK Average Cow Prices	11
Weekly UK Cow Prices	11
British Isles R3 Steer Price	12
British Isles R4 Steer Price	12
British Isles Average R3 and R4 Steer price	13
British Isles R3 Heifer Price	14
British Isles R4 Heifer Price	14
British Isles Average R3 and R4 Heifer price	15
Exchange Rate £ / Euro	16
Imports.....	17
Monthly Live Imports of Cattle into NI for Direct Slaughter	17
Monthly Live Imports of Sheep into NI for Direct Slaughter	17
Exports.....	18
Monthly Live Exports of Cattle from NI into Rol and GB.....	18
Monthly live Exports of Sheep from NI into Rol and GB.....	18

Cattle Prices

Average NI Clean Cattle Price

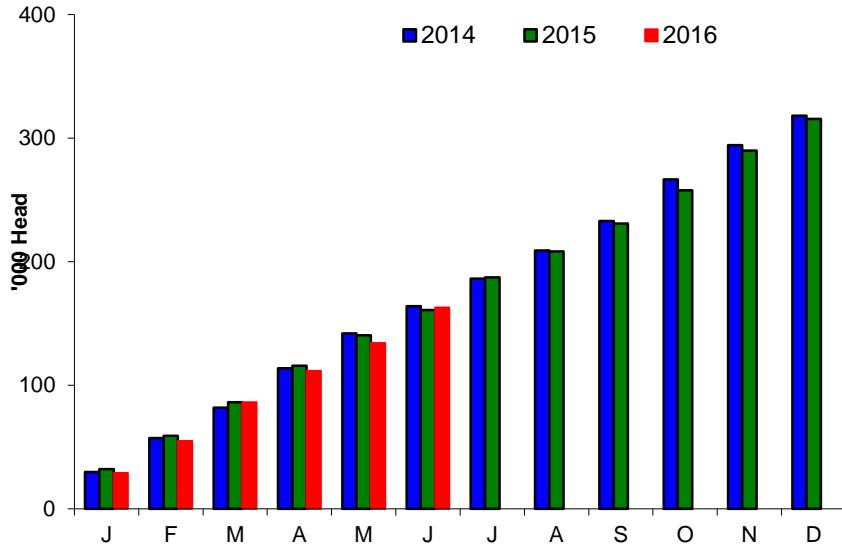


Average NI Cow Price

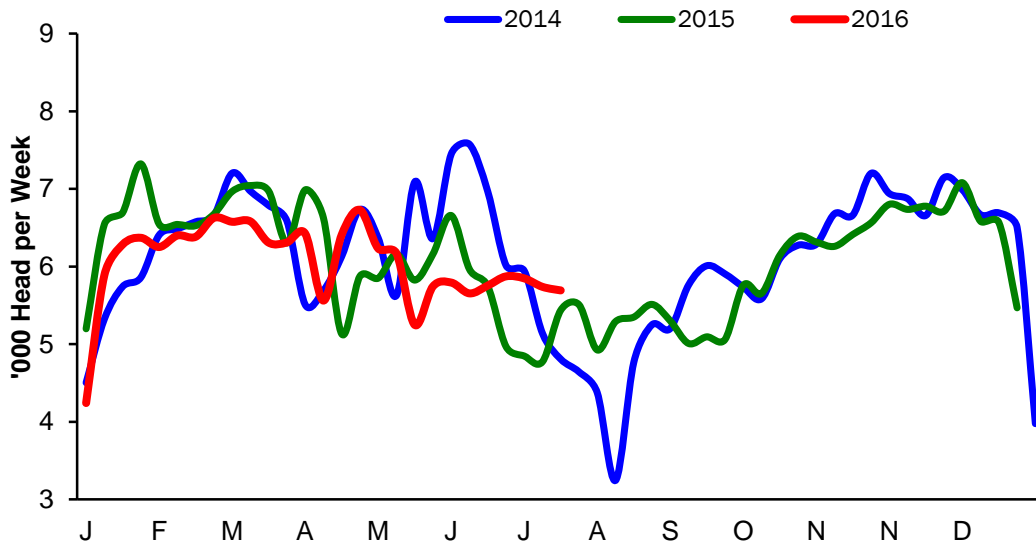


Cattle Slaughtering

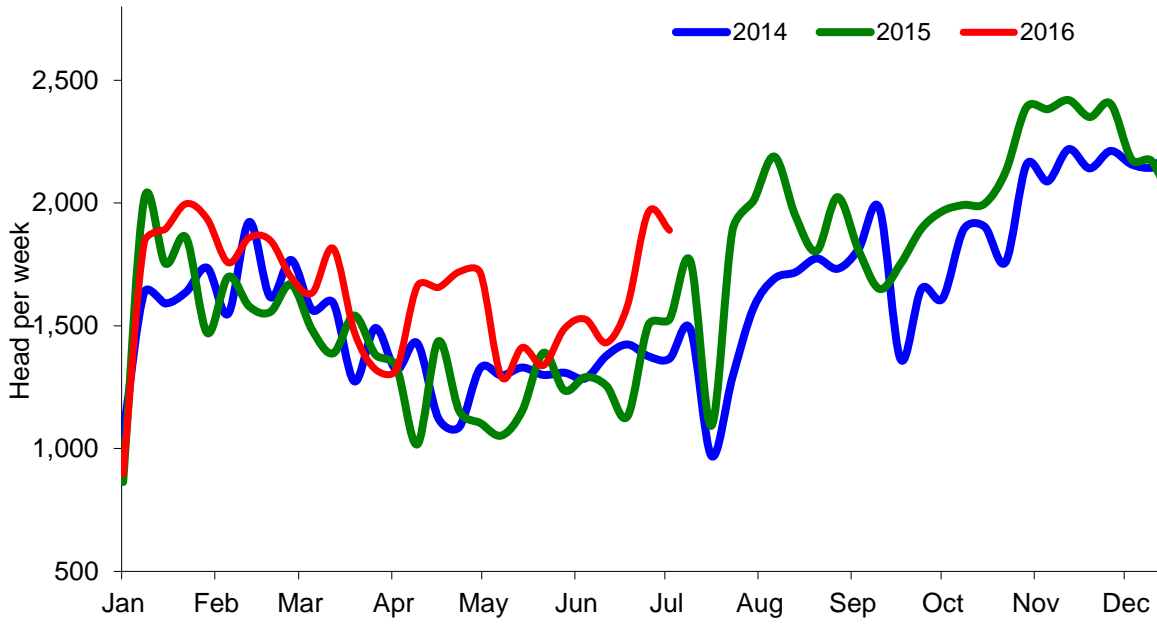
NI Clean Cattle Slaughtering – Cumulative



NI Weekly Clean Cattle Slaughtering

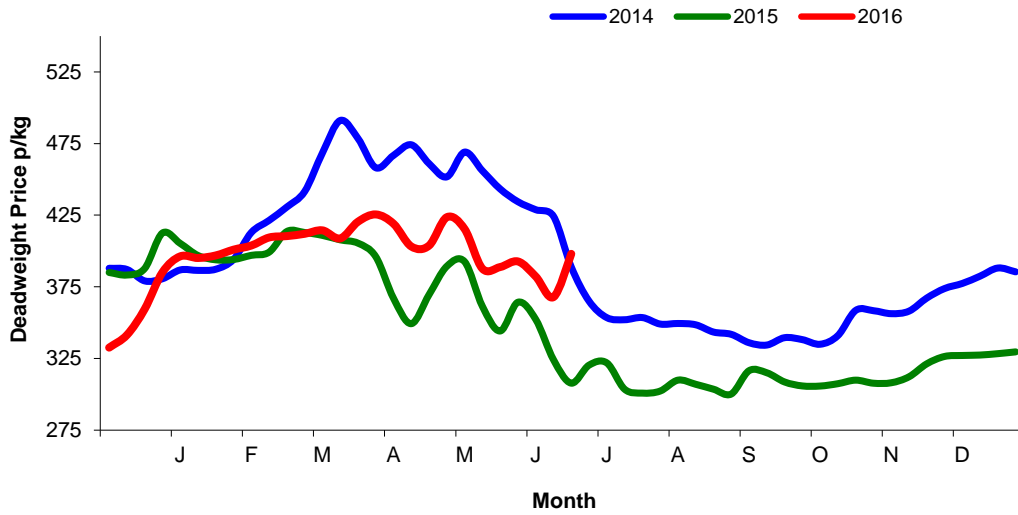


NI Weekly Cow Slaughtering



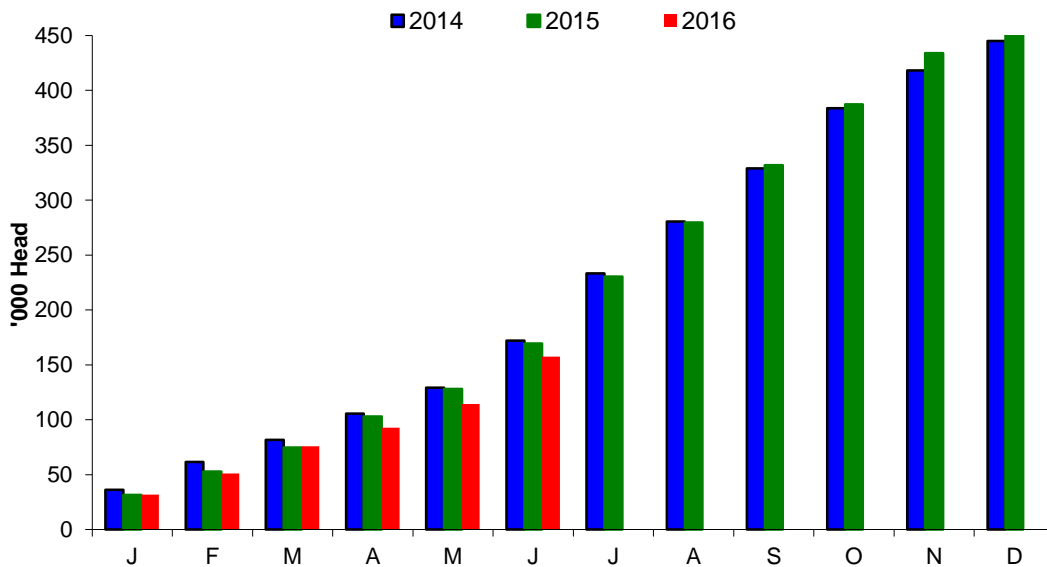
Sheep Prices

Average Deadweight NI Hogget / Lamb Price

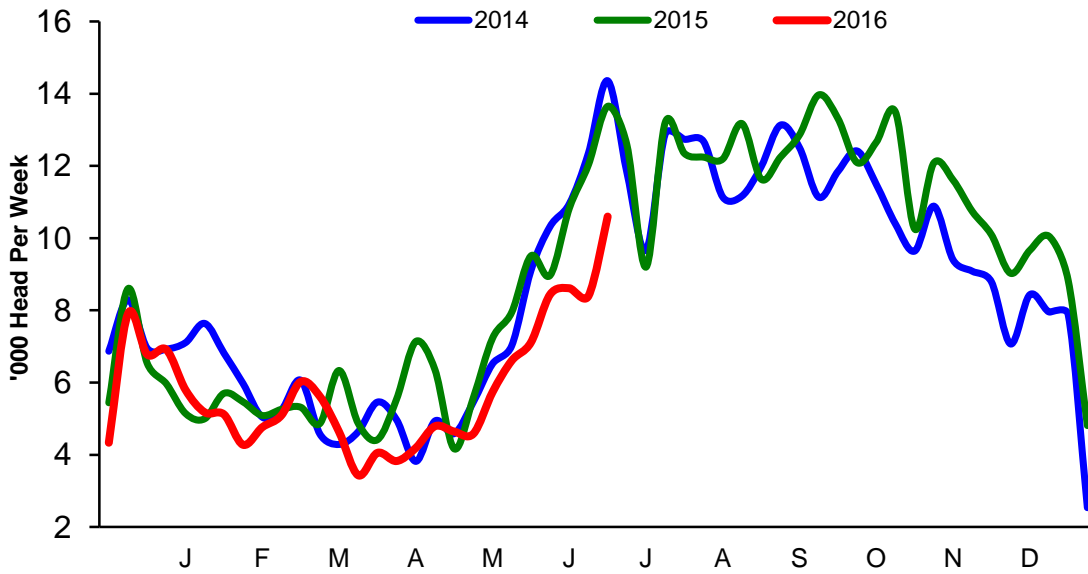


Sheep Slaughtering

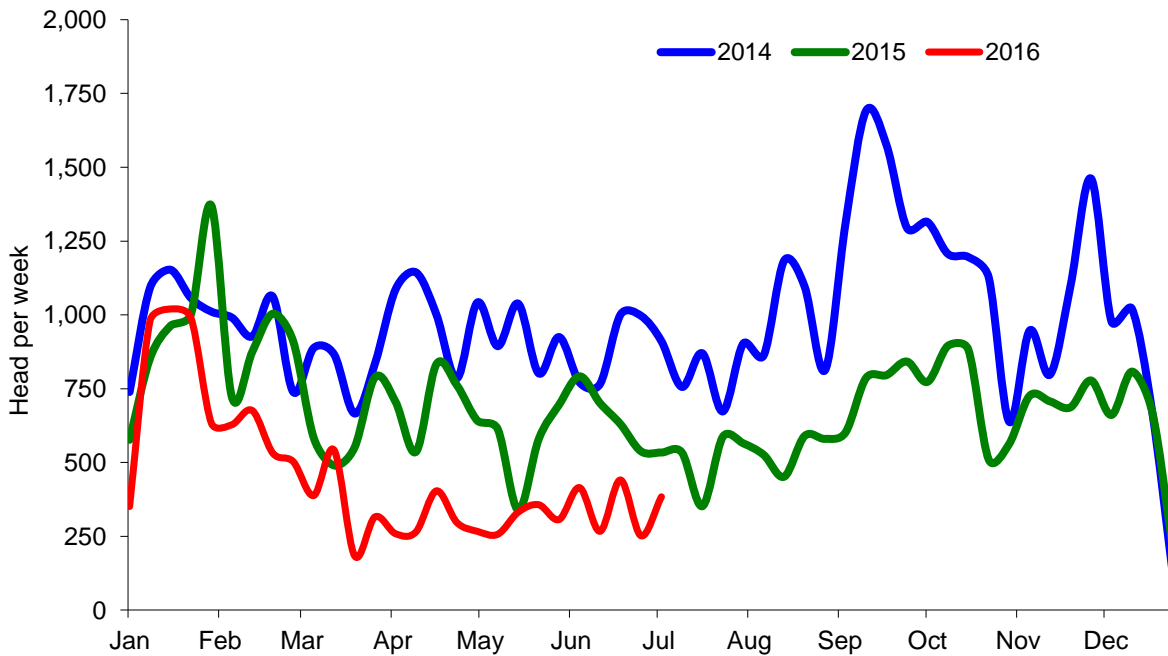
Cumulative Lamb & Hogget Slaughtering



Total Weekly Lamb & Hogget Slaughtering



Total Weekly Ewe and Ram Slaughtering



Market Information June 2016

Page 8

NI CATTLE AND SHEEP SLAUGHTERINGS FOR THE FOODCHAIN						
	June			Year to Date		
	(13 weeks ended 02/07/16)			(13 weeks ended 02/07/16)		
	Jun-15	Jun-16	% Change	2015	2016	Change
CATTLE						
Steers	13,022	13,937	+7%	38,384	38,111	-1%
Heifers	9,570	10,173	+6%	27,907	27,498	-1%
Young Bulls / Calves	3,711	4,794	+29%	8,233	11,273	+37%
Total Prime Cattle	26,303	28,904	+10%	74,524	76,882	+3%
Calves	468	629	+34%	1,376	1,764	+0%
Cows	6,418	8,391	+31%	16,061	20,677	+29%
Mature Bulls	362	395	+9%	730	1,059	+45%
Total Cattle	33,551	38,319	+14%	92,691	100,382	+8%
SHEEP						
Lambs & Hoggets	49,284	43,162	-12%	94,581	81,593	-14%
Ewes & Rams	3,357	1,759	-48%	8,367	4,245	-49%
Total Sheep	52,641	44,921	-15%	102,948	85,838	-17%
The above figures are provisional; any amendments will be incorporated in the cumulative data (source DARD).						

NI BEEF AND SHEEPMEAT PRODUCTION - FOODCHAIN						
	June			Year to Date		
	(13 weeks ended 02/07/16)			(13 weeks ended 02/07/16)		
	Jun-15	Jun-16	% Change	2015	2016	Change
BEEF						
Steers	4,574	4,935	+8%	13,470	13,514	+0%
Heifers	3,040	3,251	+7%	8,862	8,763	-1%
Young Bulls	1,262	1,603	+27%	2,774	3,706	+34%
Total Prime Beef	8,876	9,789	+10%	25,106	25,983	+3%
Calves	111	144	+30%	305	379	+24%
Cows	1,992	2,609	+31%	4,910	6,381	+30%
Mature Bulls	156	176	+13%	319	461	+45%
Total Beef	11,135	9,553	-14%	30,653	33,204	+8%
SHEEPMEAT						
Lambs & Hoggets	1,064	916	-14%	2,057	1,747	-15%
Ewes & Rams	103	54	-48%	244	129	-47%
Total Sheepmeat	1,167	969	-17%	2,301	1,863	-19%
The above figures are provisional; any amendments will be incorporated in the cumulative data (source DARD).						

Market Information June 2016
Page 9

Total Carcase Weight Produced for the Food Chain
Year-to-Date (tonnes – t.)

Month	Prime Cattle		Cows & Bulls		Lambs/Hoggets		Ewes & Rams	
	2015	2016	2015	2016	2015	2016	2015	2016
January	10,829	9,924	2,569	2,772	712	675	127	107
February	8,919	8,906	2,085	2,334	476	422	92	61
March	9,199	10,704	1,882	2,466	482	551	66	47
April	7,850	8,617	1,564	2,188	493	367	79	37
May	8,380	7,577	1,518	1,869	500	465	62	38
June	8,876	9,789	2,148	2,785	1,064	916	103	54
July								
August								
September								
October								
November								
December								
Total	54,052	55,517	11,767	14,414	3,726	3,396	529	343
Change (t.)	1,465		2,647		-331		-186	
% Change	2.71%		22.50%		-8.88%		-35.12%	

**excludes calves*

Change in Throughput / Production
Last 4 weeks 2015/2016

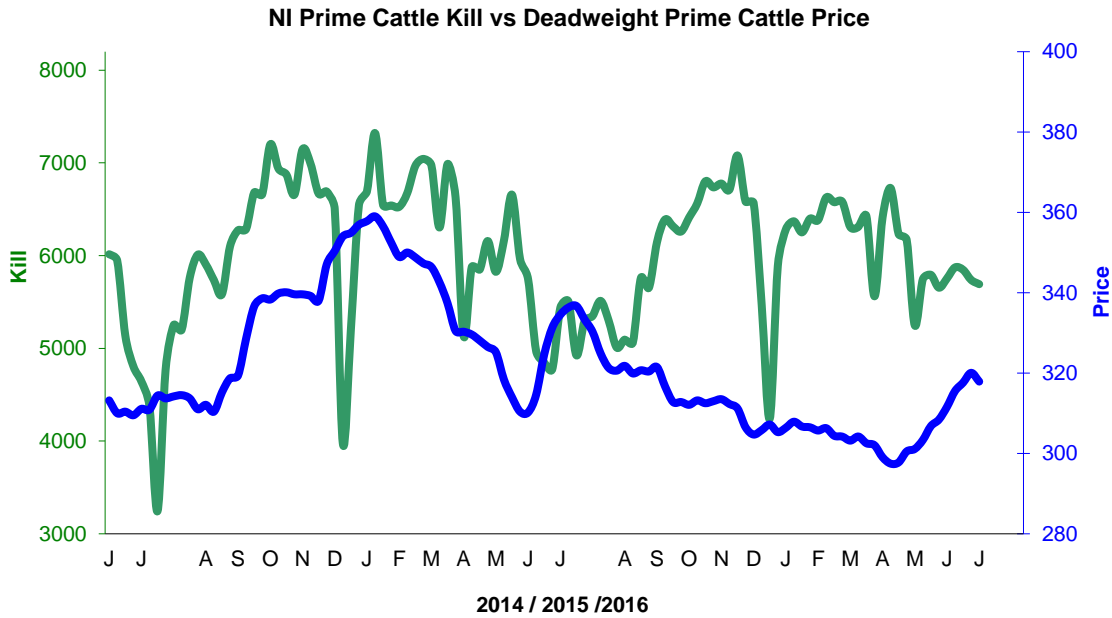
Change in Throughput / Production 2015/2016

June

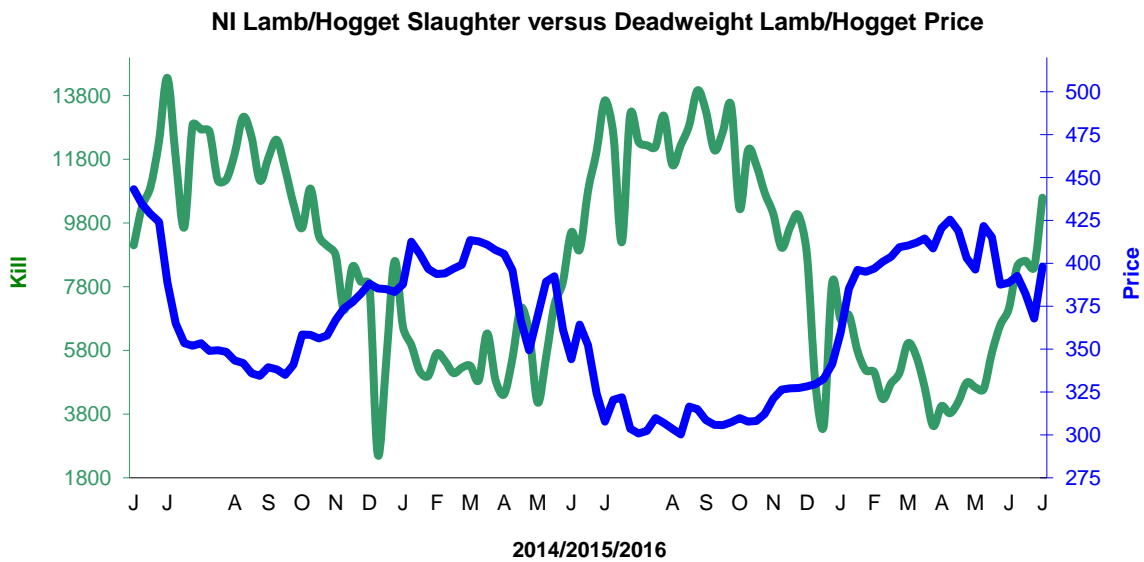
2015/2016	Number	Tonnage	ACW Kg
Prime	9.9%	10.3%	1.23
Cows	30.7%	31.0%	0.39
Total	14.2%	14.2%	-0.03
Lamb	-12.4%	-13.9%	-0.34
Ewes and Rams	-47.6%	-48.1%	-0.36
Total Sheep	-14.7%	-16.9%	-0.59

Supply and Price

NI Clean Cattle Kill vs. Average Clean Cattle Price



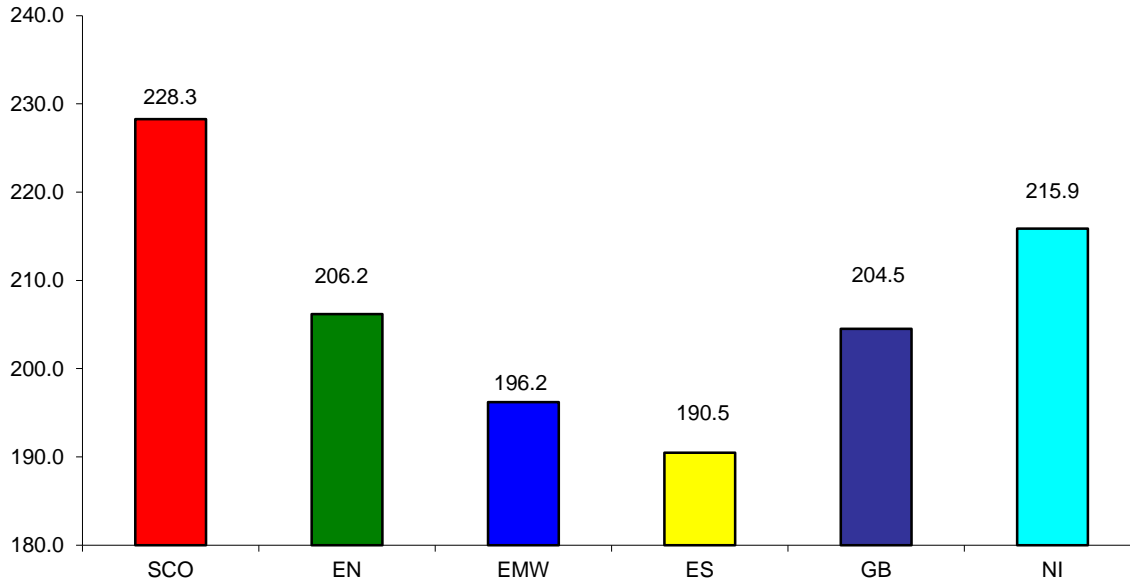
NI Lamb/Hogget Kill vs. Average Lamb / Hogget Price



Green	Supply (Kill)
Blue	Price

BRITISH ISLES COMPARISONS

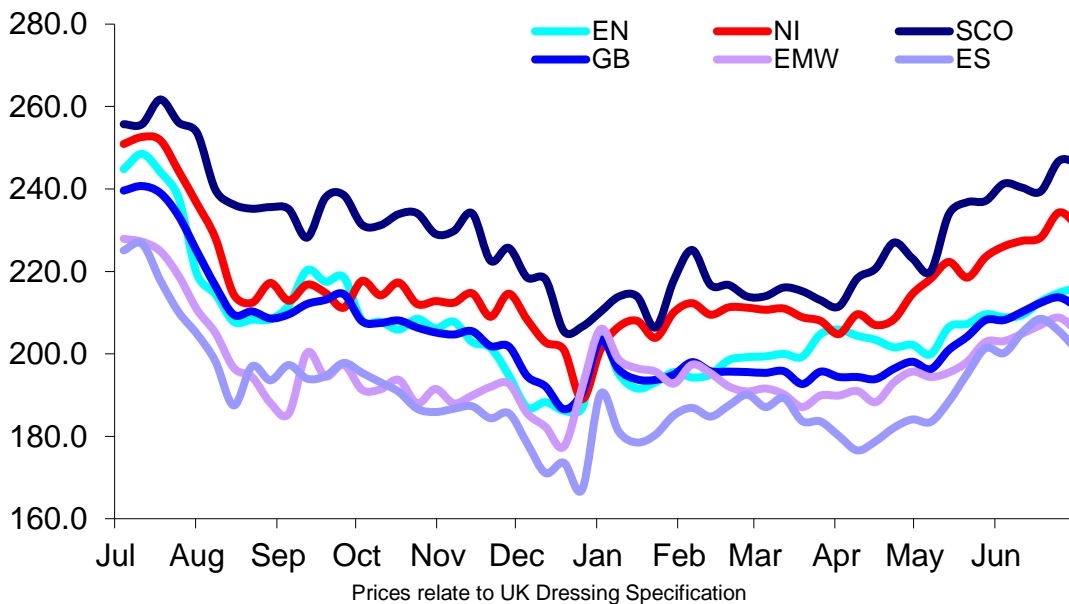
**UK Average Cow Prices
52 Weeks to 02 July 2016**



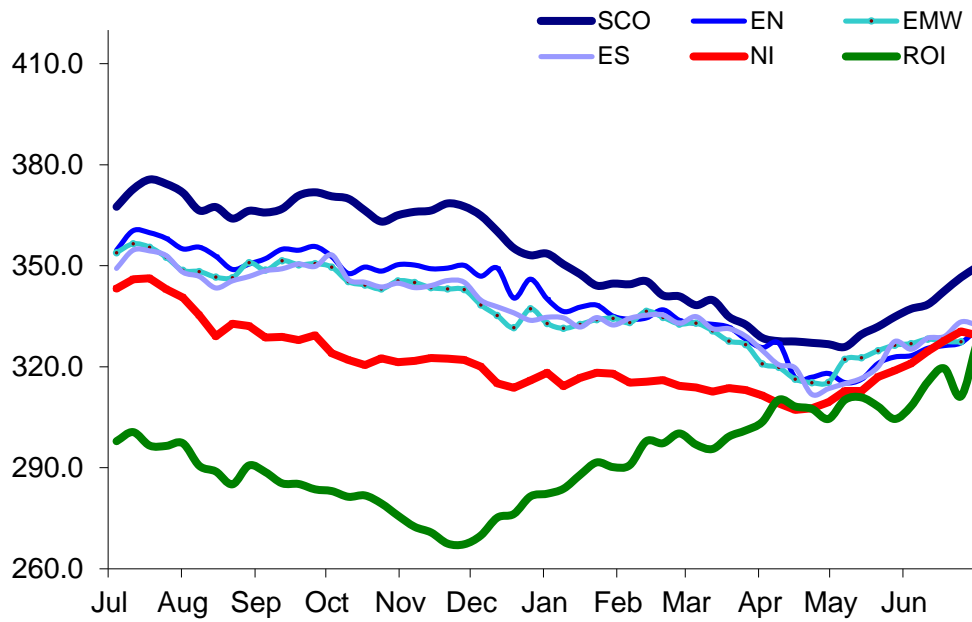
SCO	Scotland
EN	England North
EMW	England Midlands and Wales
ES	England South
NI	Northern Ireland
GB	Great Britain

Prices relate to UK Dressing Specification

**Weekly UK Cow Prices
52 Weeks to 02 July 2016**

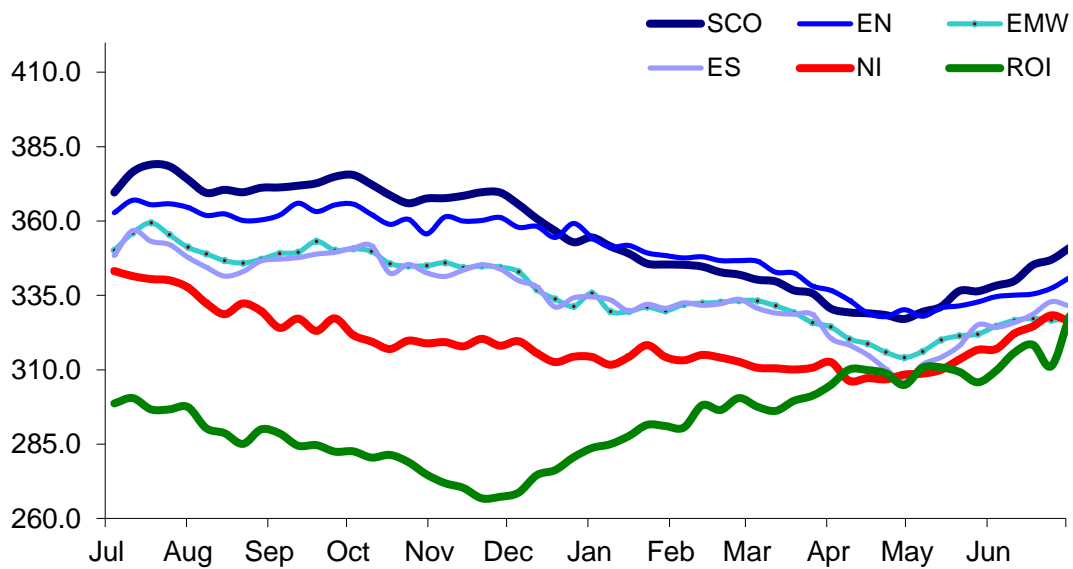


British Isles R3 Steer Price
52 Weeks to 02 July 2016



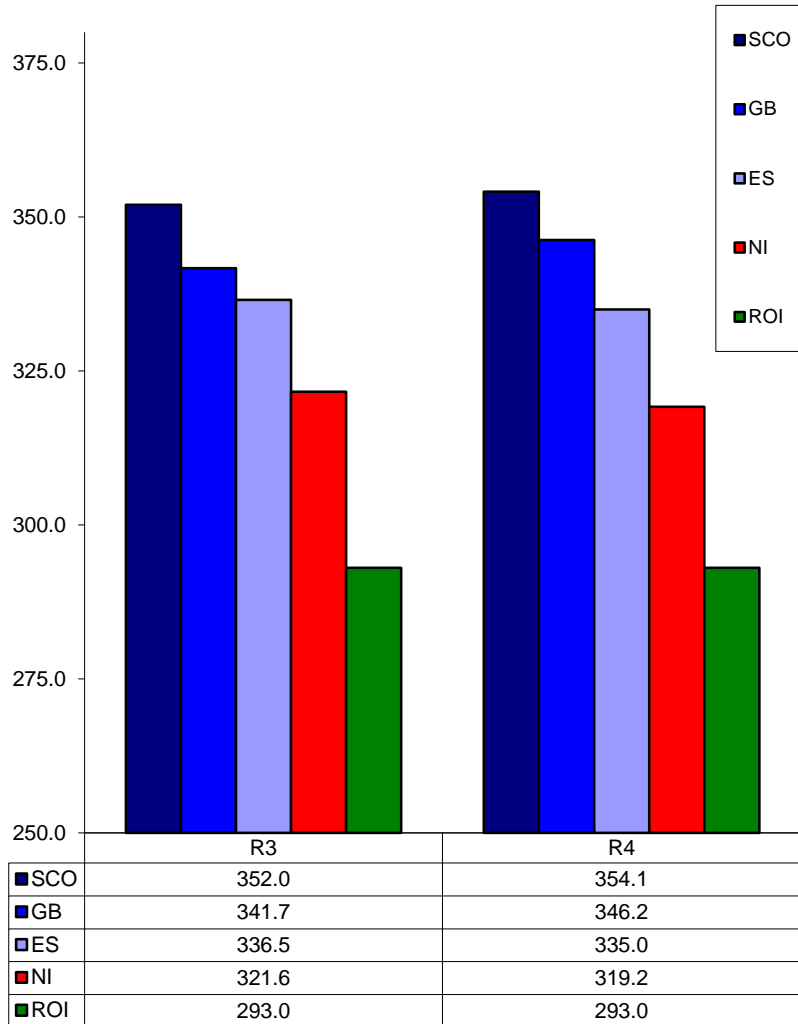
Prices relate to UK Dressing Specification

British Isles R4 Steer Price
52 Weeks to 02 July 2016



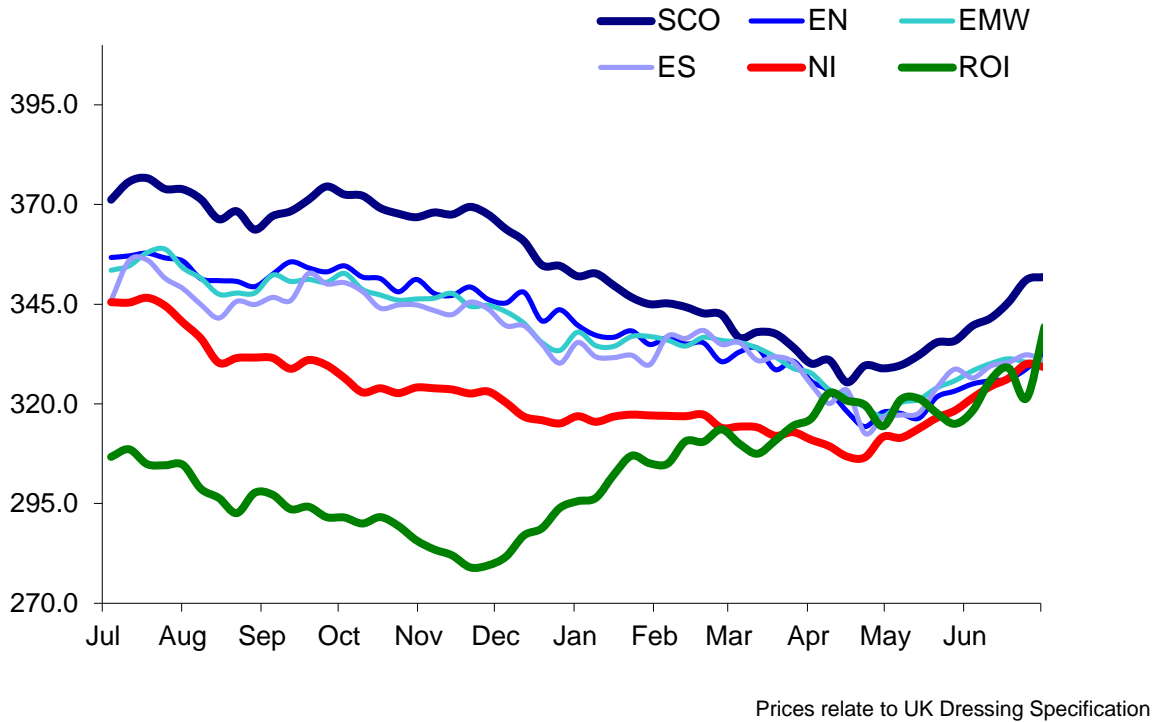
Prices relate to UK Dressing Specification

British Isles Average R3 and R4 Steer price
52 Weeks to 02 July 2016

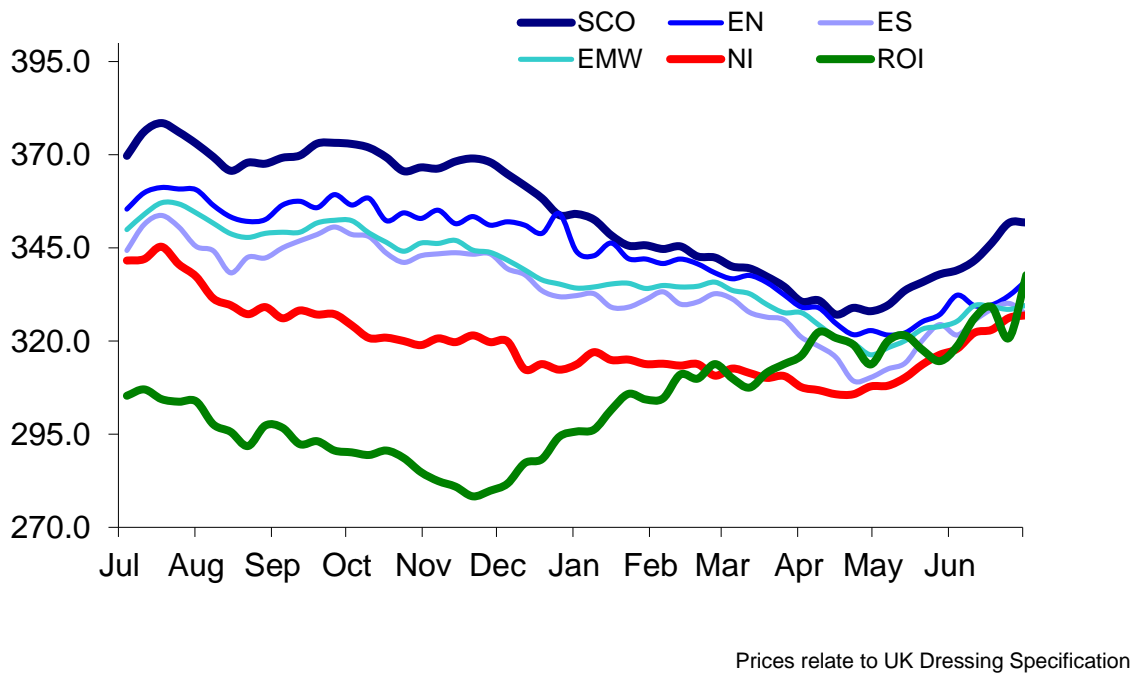


Prices relate to UK Dressing Specification

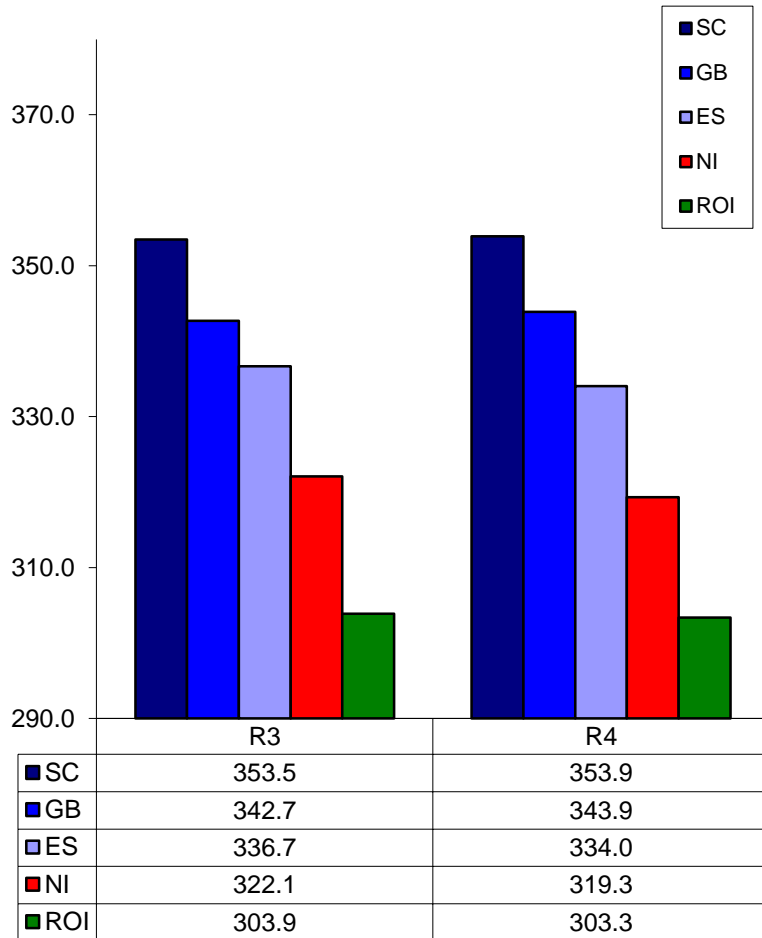
British Isles R3 Heifer Price
52 Weeks to 02 July 2016



British Isles R4 Heifer Price
52 Weeks to 02 July 2016

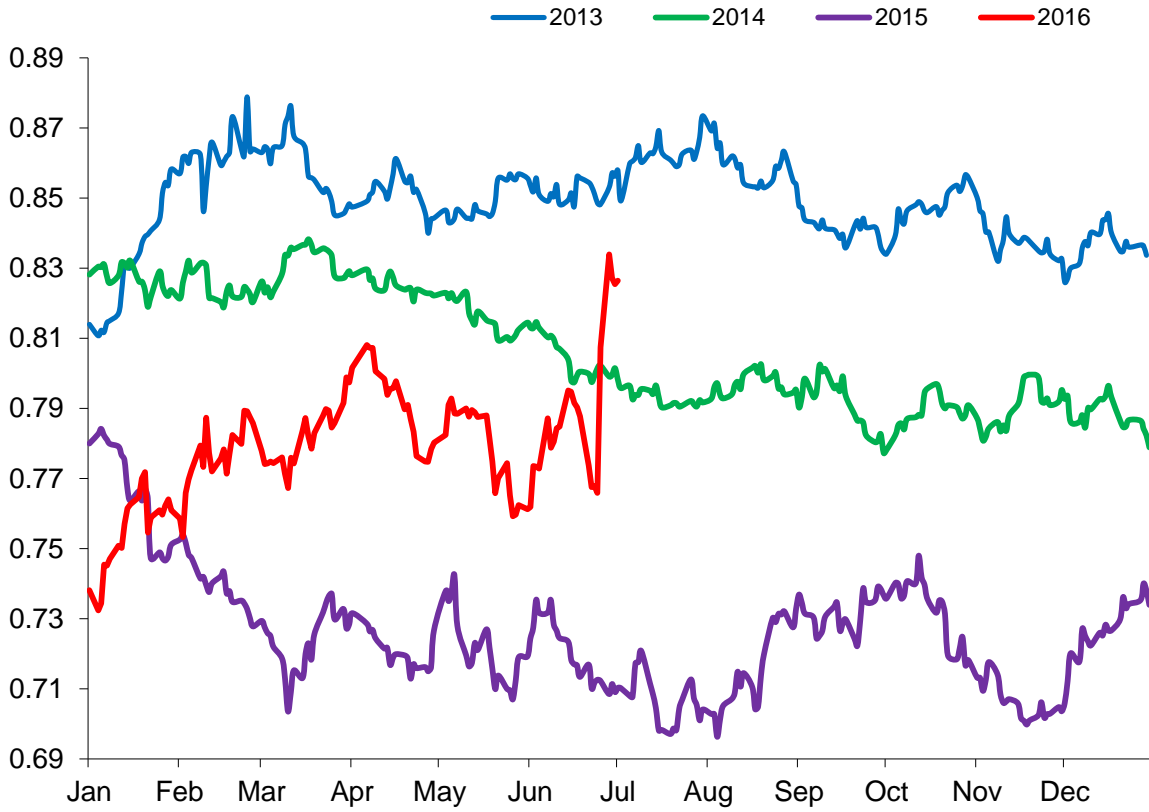


British Isles Average R3 and R4 Heifer price
52 Weeks to 02 July 2016



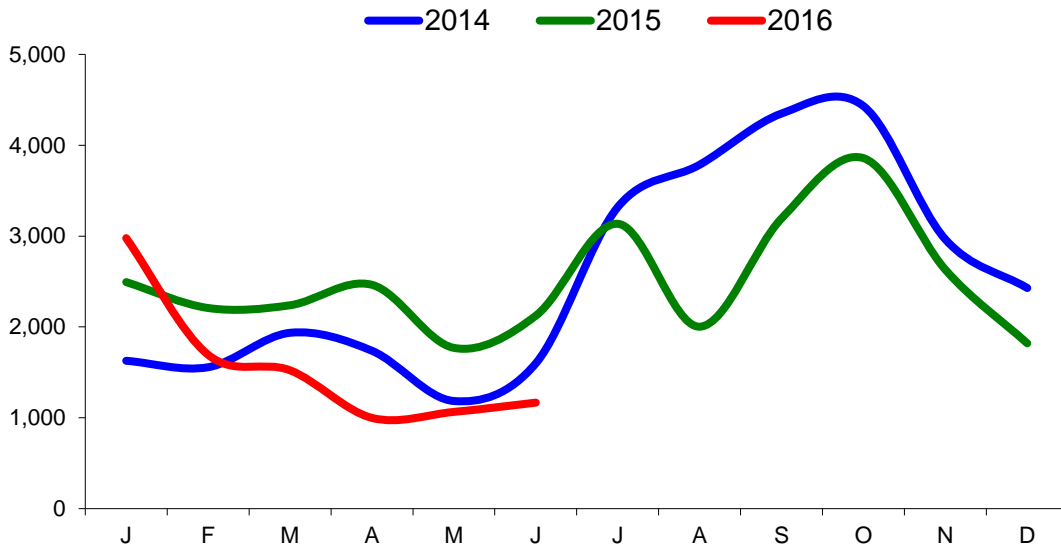
Prices relate to UK Dressing Specification

Exchange Rate £ / Euro
01 January 2013 – 30 June 2016

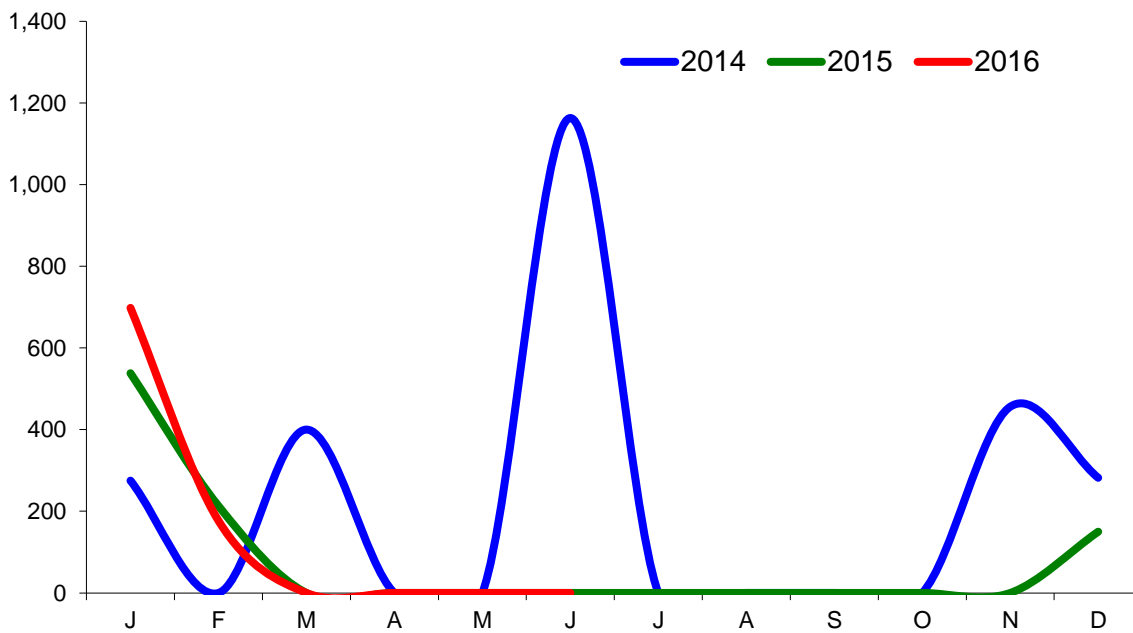


Imports

Monthly Live Imports of Cattle into NI for Direct Slaughter From ROI and GB Combined

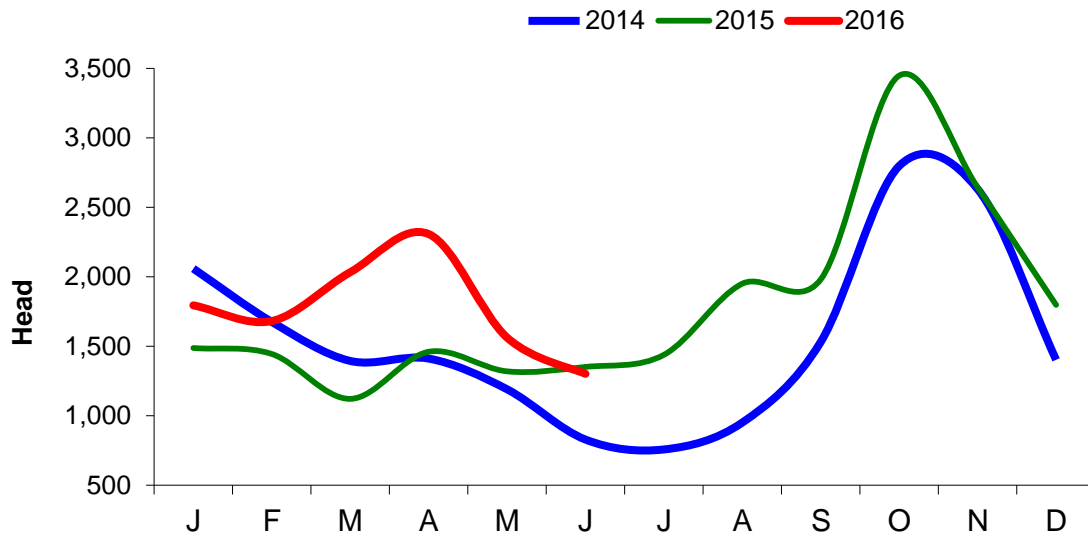


Monthly Live Imports of Sheep into NI for Direct Slaughter From ROI and GB Combined



Exports

Monthly Live Exports of Cattle from NI into ROI and GB



Monthly Live Exports of Sheep from NI into ROI and GB

