

**LMC**

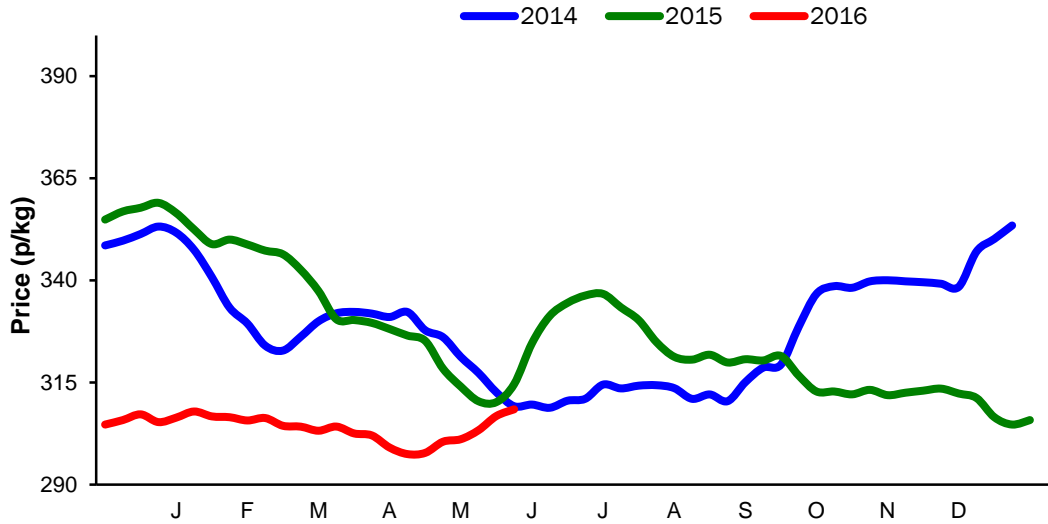
**Monthly Economic Review  
May 2016**

## Contents

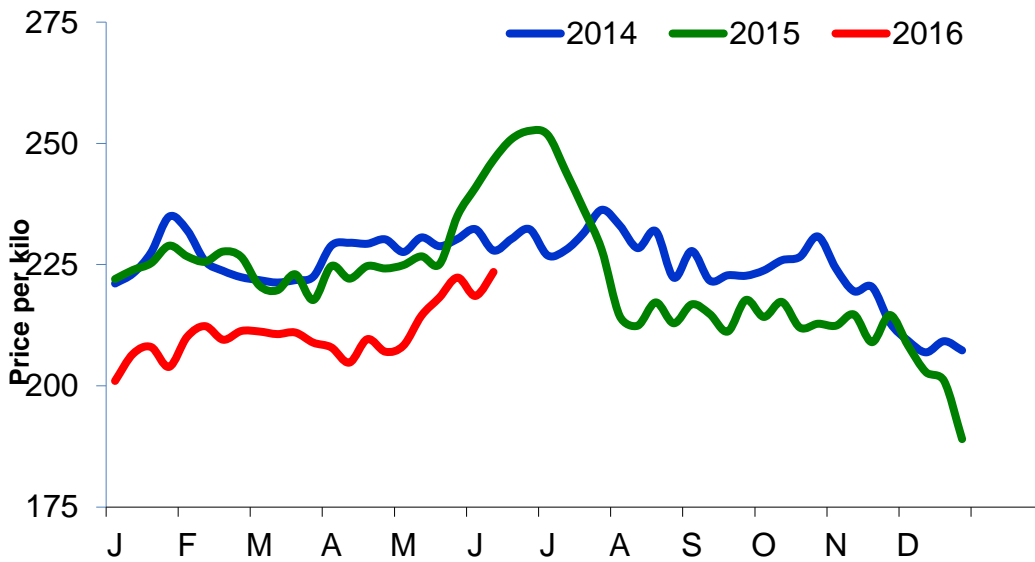
Contents .....	2
Cattle Prices.....	4
Average NI Clean Cattle Price.....	4
Average NI Cow Price .....	4
Cattle Slaughtering.....	5
NI Clean Cattle Slaughtering – Cumulative .....	5
NI Weekly Clean Cattle Slaughtering .....	5
NI Weekly Cow Slaughtering.....	5
Sheep Prices.....	6
Average NI Lamb / Hogget Price .....	6
Sheep Slaughtering.....	7
Cumulative Lamb & Hogget Slaughtering.....	7
Total Weekly Lamb & Hogget Slaughtering.....	7
Total Weekly Ewe and Ram Slaughtering .....	7
Total Carcase Weight Produced for the Food Chain.....	8
Change in Throughput / Production .....	9
Supply and Price.....	10
NI Lamb/Hogget Kill vs. Average Lamb / Hogget Price .....	10
NI Clean Cattle Kill vs. Average Clean Cattle Price.....	10
British Isles Price Comparisons .....	11
UK Average Cow Prices .....	11
Weekly UK Cow Prices .....	11
British Isles R3 Steer Price .....	12
British Isles R4 Steer Price .....	12
British Isles Average R3 and R4 Steer price .....	13
British Isles R3 Heifer Price .....	14
British Isles R4 Heifer Price .....	14
British Isles Average R3 and R4 Heifer price .....	15
Exchange Rate £ / Euro.....	16
Imports.....	17
Monthly Live Imports of Cattle into NI for Direct Slaughter.....	17
Monthly Live Imports of Sheep into NI for Direct Slaughter.....	17
Exports.....	18
Monthly Live Exports of Cattle from NI into Rol and GB.....	18
Monthly live Exports of Sheep from NI into Rol and GB.....	18

### Cattle Prices

#### Average NI Clean Cattle Price

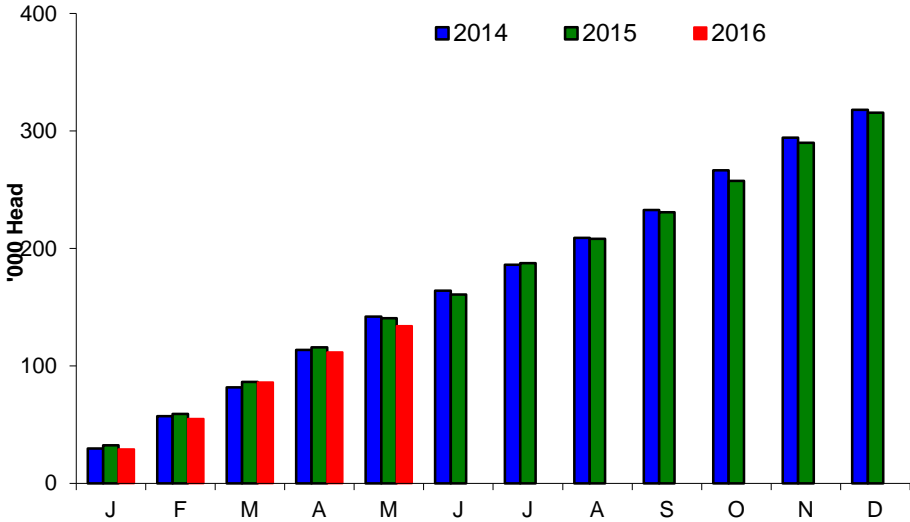


#### Average NI Cow Price

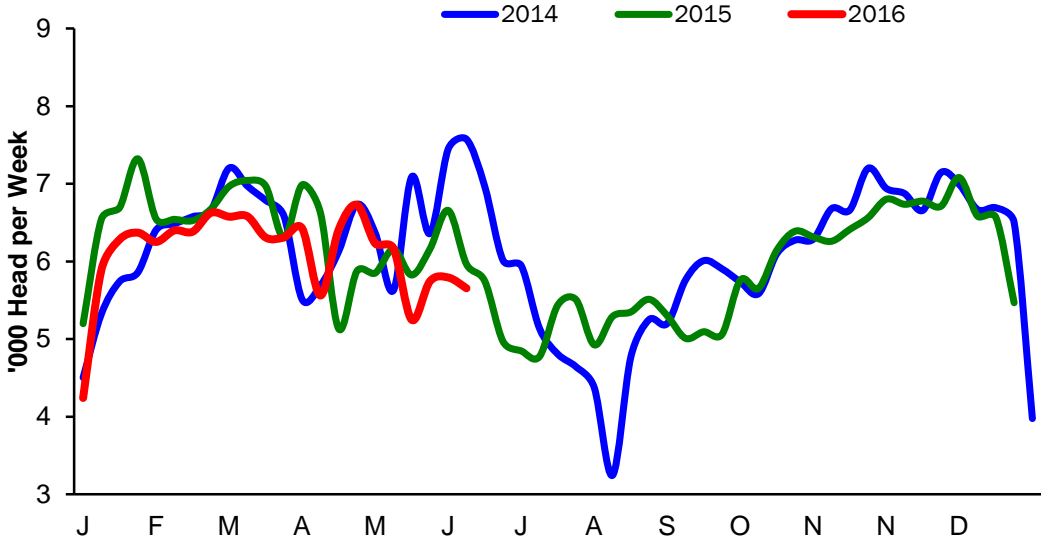


Cattle Slaughtering

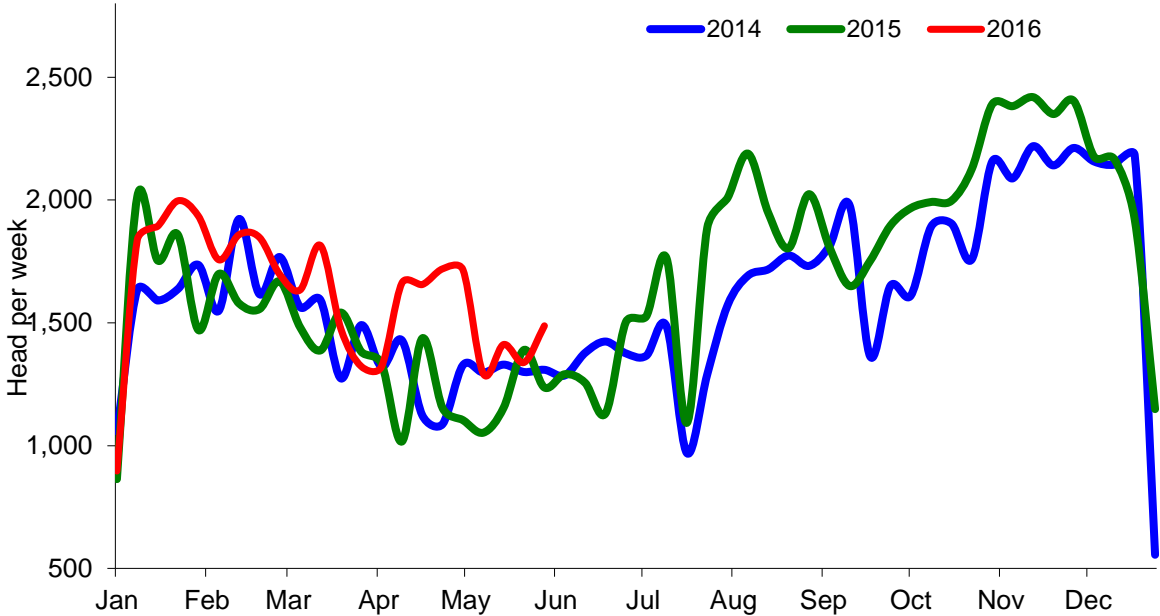
NI Clean Cattle Slaughtering – Cumulative



NI Weekly Clean Cattle Slaughtering

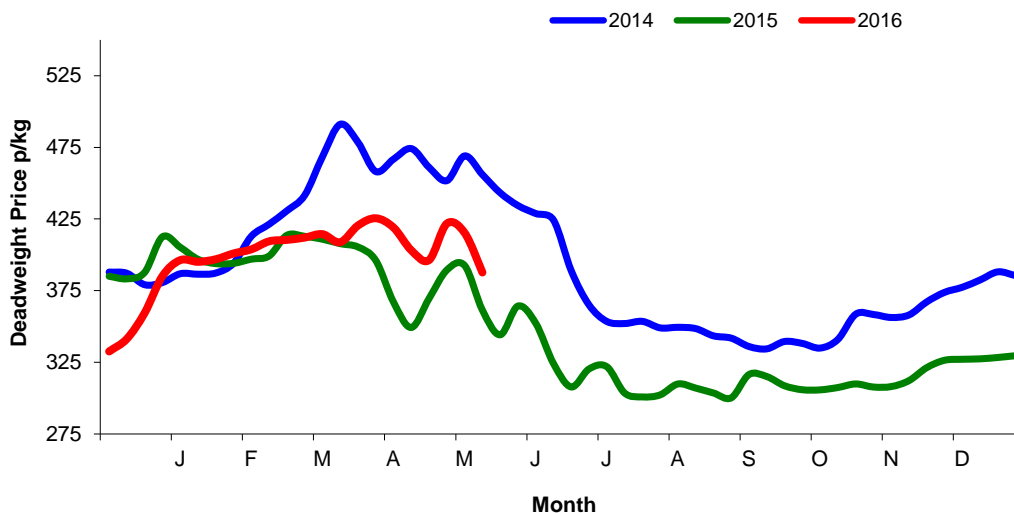


NI Weekly Cow Slaughtering



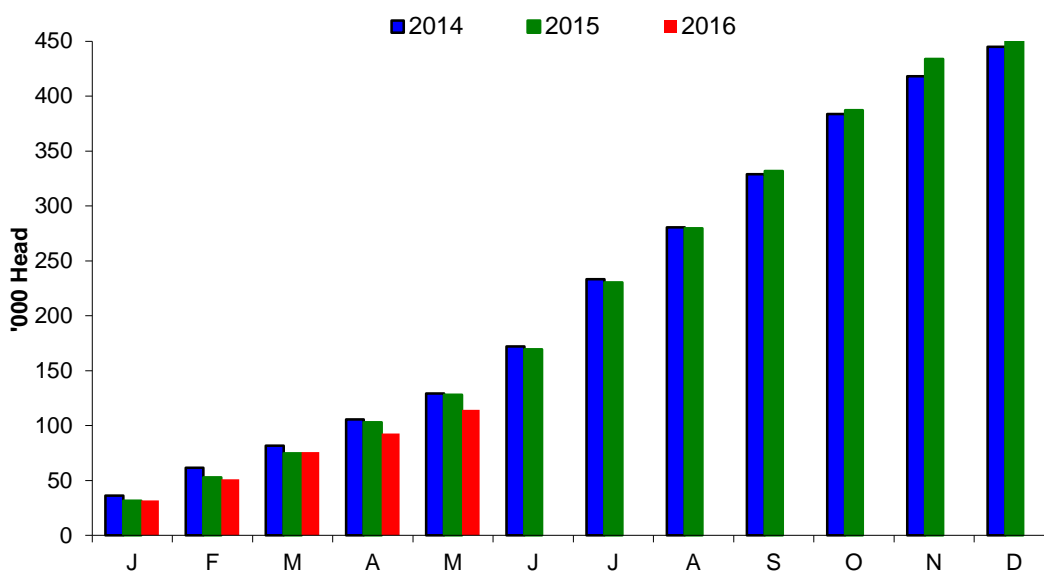
### Sheep Prices

#### Average Deadweight NI Hogget / Lamb Price

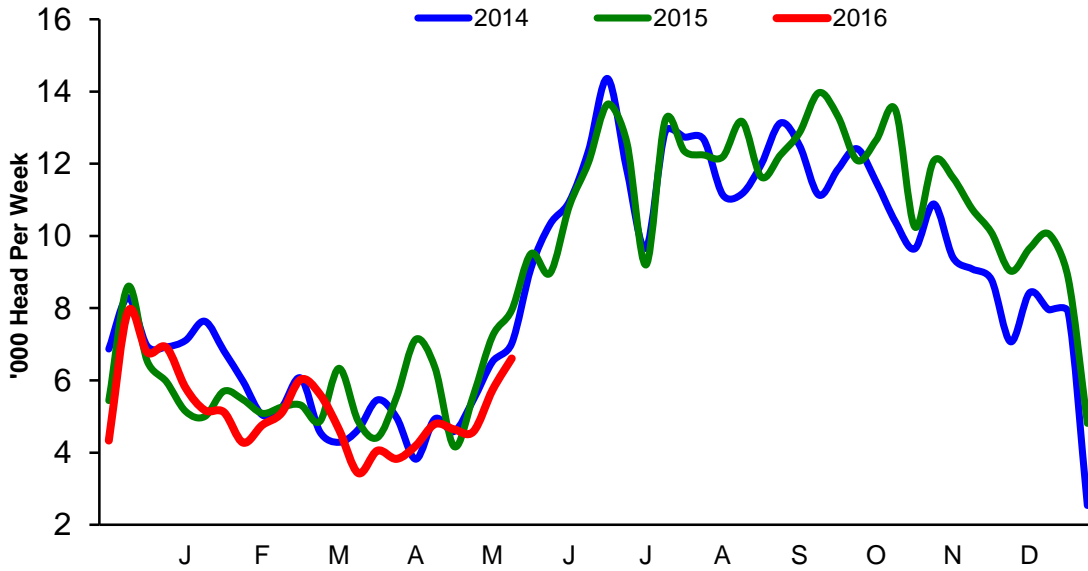


### Sheep Slaughtering

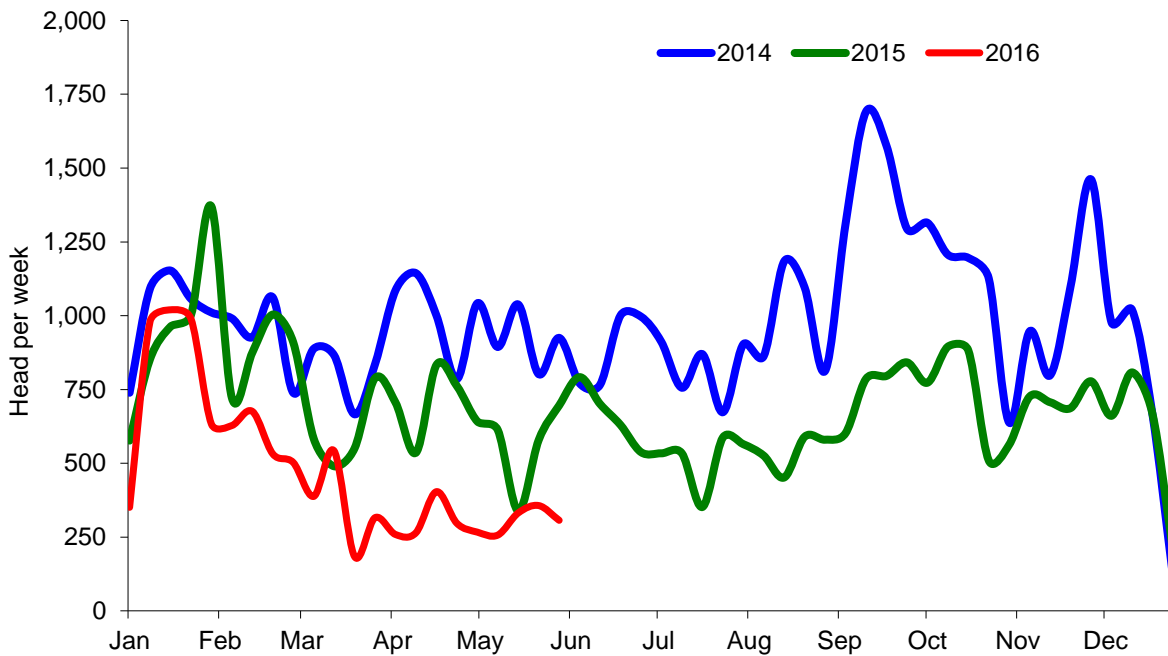
#### Cumulative Lamb & Hogget Slaughtering



### Total Weekly Lamb & Hogget Slaughtering



### Total Weekly Ewe and Ram Slaughtering



## Market Information May 2016

### Page 8

NI CATTLE AND SHEEP SLAUGHTERINGS FOR THE FOODCHAIN						
	May			Year to Date		
	(8 weeks ended 28/05/16)			(8 weeks ended 28/05/16)		
	May-15	May-16	% Change	2015	2016	Change
<b>CATTLE</b>						
Steers	13,109	10,983	-16%	25,362	24,174	-5%
Heifers	9,356	8,228	-12%	18,337	17,325	-6%
Young Bulls / Calves	2,325	3,228	+39%	4,522	6,479	+43%
<b>Total Prime Cattle</b>	<b>24,790</b>	<b>22,439</b>	<b>-9%</b>	<b>48,221</b>	<b>47,978</b>	<b>-1%</b>
Calves	434	510	+18%	908	1,135	+0%
Cows	4,702	5,532	+18%	9,643	12,286	+27%
Mature Bulls	183	376	+105%	368	664	+80%
<b>Total Cattle</b>	<b>30,109</b>	<b>28,857</b>	<b>-4%</b>	<b>59,140</b>	<b>62,063</b>	<b>+5%</b>
<b>SHEEP</b>						
Lambs & Hoggets	23,331	21,569	-8%	45,297	38,431	-15%
Ewes & Rams	2,173	1,253	-42%	5,010	2,486	-50%
<b>Total Sheep</b>	<b>25,504</b>	<b>22,822</b>	<b>-11%</b>	<b>50,307</b>	<b>40,917</b>	<b>-19%</b>
The above figures are provisional; any amendments will be incorporated in the cumulative data (source DARD).						

NI BEEF AND SHEEPMEAT PRODUCTION - FOODCHAIN						
	May			Year to Date		
	(8 weeks ended 28/05/16)			(8 weeks ended 28/05/16)		
	May-15	May-16	% Change	2015	2016	Change
<b>BEEF</b>						
Steers	4,619	3,909	-15%	8,895	8,579	-4%
Heifers	2,979	2,614	-12%	5,822	5,512	-5%
Young Bulls	782	1,054	+35%	1,512	2,103	+39%
<b>Total Prime Beef</b>	<b>8,380</b>	<b>7,577</b>	<b>-10%</b>	<b>16,229</b>	<b>16,194</b>	<b>-0%</b>
Calves	93	106	+13%	194	235	+21%
Cows	1,436	1,708	+19%	2,919	3,772	+29%
Mature Bulls	82	162	+96%	163	285	+75%
<b>Total Beef</b>	<b>9,991</b>	<b>9,553</b>	<b>-4%</b>	<b>19,505</b>	<b>20,486</b>	<b>+5%</b>
<b>SHEEPMEAT</b>						
Lambs & Hoggets	500	465	-7%	993	832	-43%
Ewes & Rams	62	38	-39%	141	75	-61%
<b>Total Sheepmeat</b>	<b>562</b>	<b>503</b>	<b>-11%</b>	<b>1,135</b>	<b>621</b>	<b>-45%</b>
The above figures are provisional; any amendments will be incorporated in the cumulative data (source DARD).						



**Market Information May 2016**  
**Page 9**

**Total Carcase Weight Produced for the Food Chain**  
**Year-to-Date (tonnes – t.)**

Month	Prime Cattle		Cows & Bulls		Lambs/Hoggets		Ewes & Rams	
	2015	2016	2015	2016	2015	2016	2015	2016
January	10,829	9,924	2,569	2,772	712	675	127	107
February	8,919	8,906	2,085	2,334	476	422	92	61
March	9,199	10,704	1,882	2,466	482	551	66	47
April	7,850	8,617	1,564	2,188	493	367	79	37
May	8,380	7,577	1,518	1,869	500	465	62	38
June								
July								
August								
September								
October								
November								
December								
<b>Total</b>	<b>45,176</b>	<b>45,728</b>	<b>9,619</b>	<b>11,629</b>	<b>2,663</b>	<b>2,480</b>	<b>426</b>	<b>290</b>
<b>Change (t.)</b>	<b>552</b>		<b>2,010</b>		<b>-183</b>		<b>-136</b>	
<b>% Change</b>	<b>1.22%</b>		<b>20.90%</b>		<b>-6.86%</b>		<b>-31.98%</b>	

*\*excludes calves*

**Change in Throughput / Production**  
**Last 4 weeks 2015/2016**

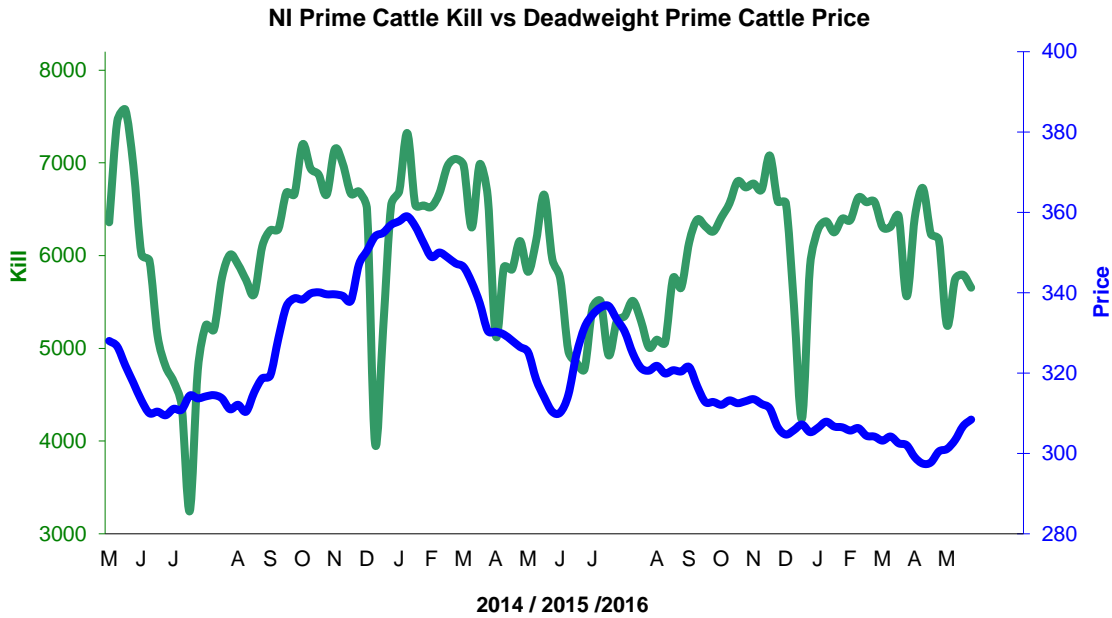
**Change in Throughput / Production 2015/2016**

**May**

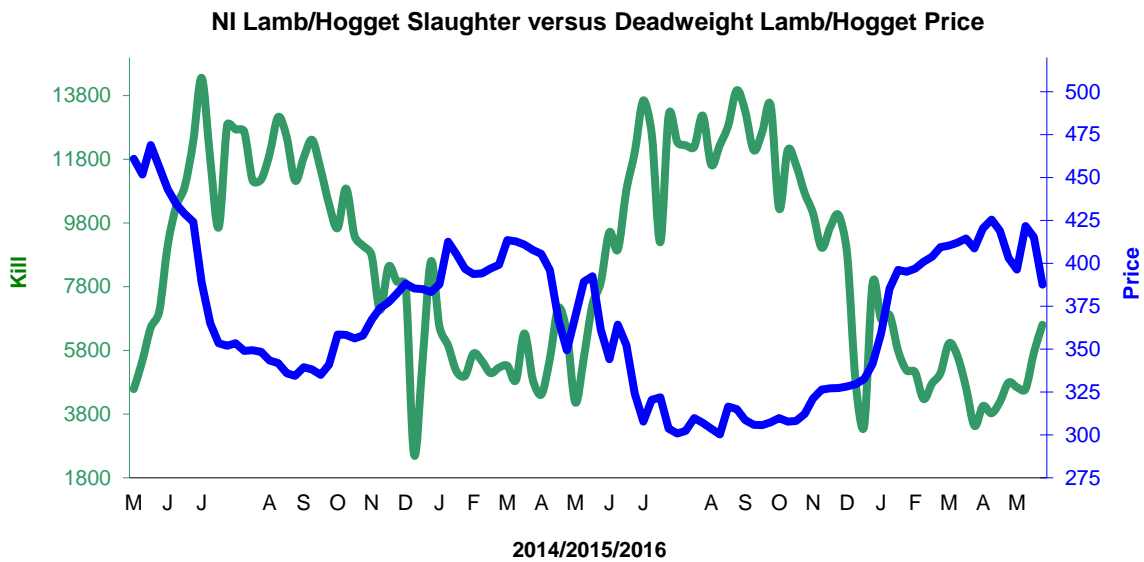
<b>2015/2016</b>	<b>Number</b>	<b>Tonnage</b>	<b>ACW Kg</b>
Prime	-9.5%	-9.6%	-0.30
Cows	17.7%	18.9%	3.55
<b>Total</b>	<b>-4.2%</b>	<b>-4.4%</b>	<b>-0.87</b>
Lamb	-7.6%	-7.0%	0.16
Ewes and Rams	-42.3%	-39.1%	1.72
<b>Total Sheep</b>	<b>-10.5%</b>	<b>-10.5%</b>	<b>0.01</b>

Supply and Price

NI Clean Cattle Kill vs. Average Clean Cattle Price



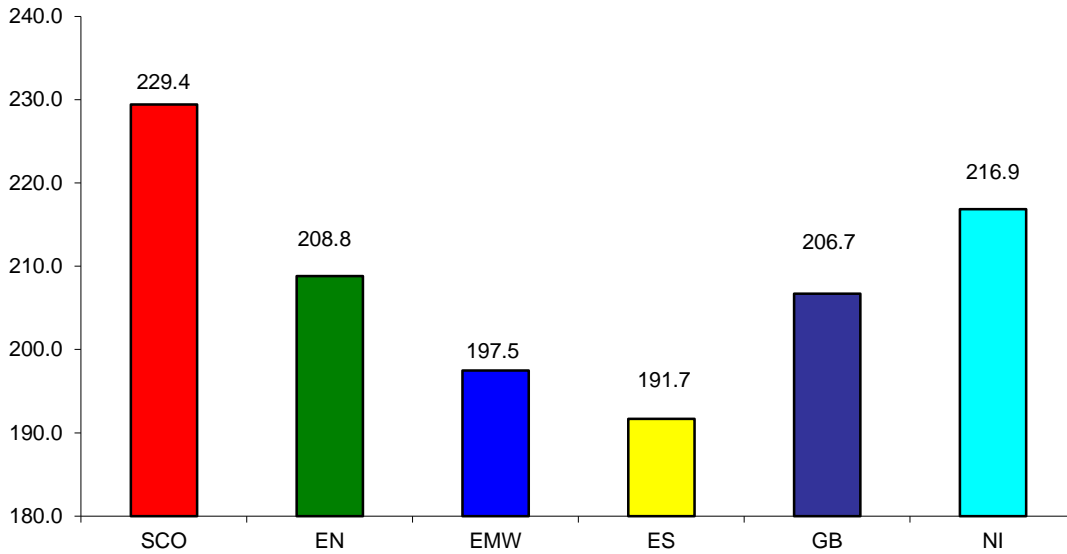
NI Lamb/Hogget Kill vs. Average Lamb / Hogget Price



Green	Supply (Kill)
Blue	Price

**BRITISH ISLES COMPARISONS**

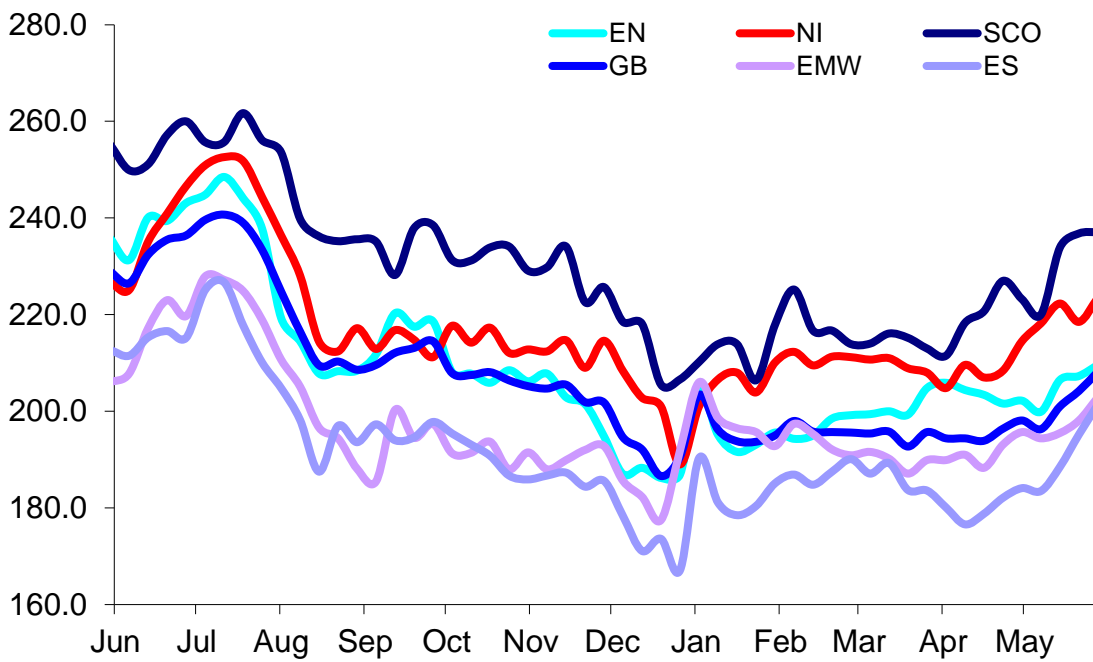
**UK Average Cow Prices  
52 Weeks to 30 May 2016**



SCO	Scotland
EN	England North
EMW	England Midlands and Wales
ES	England South
NI	Northern Ireland
GB	Great Britain

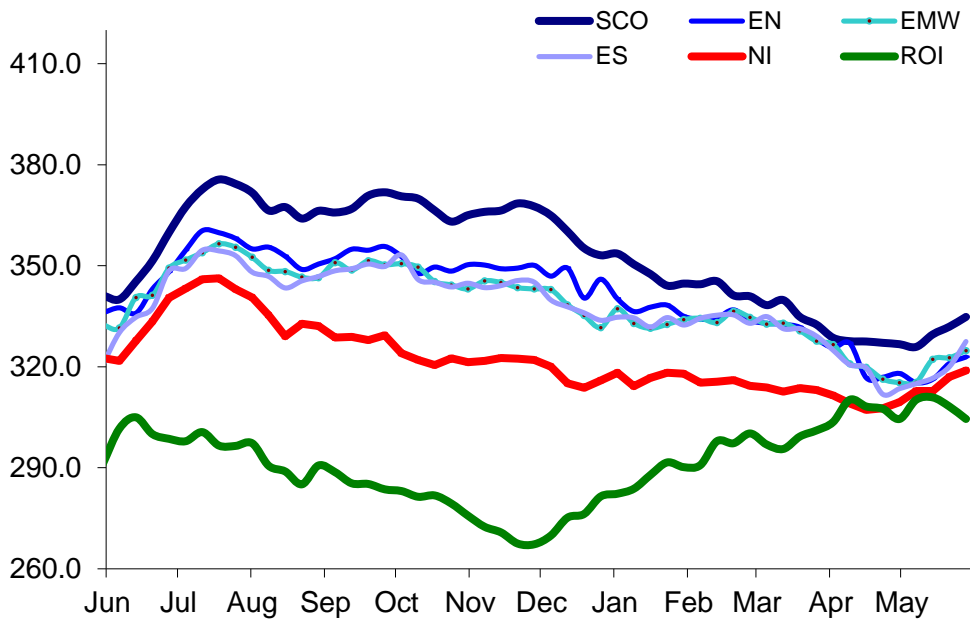
Prices relate to UK Dressing Specification

**Weekly UK Cow Prices  
52 Weeks to 30 May 2016**



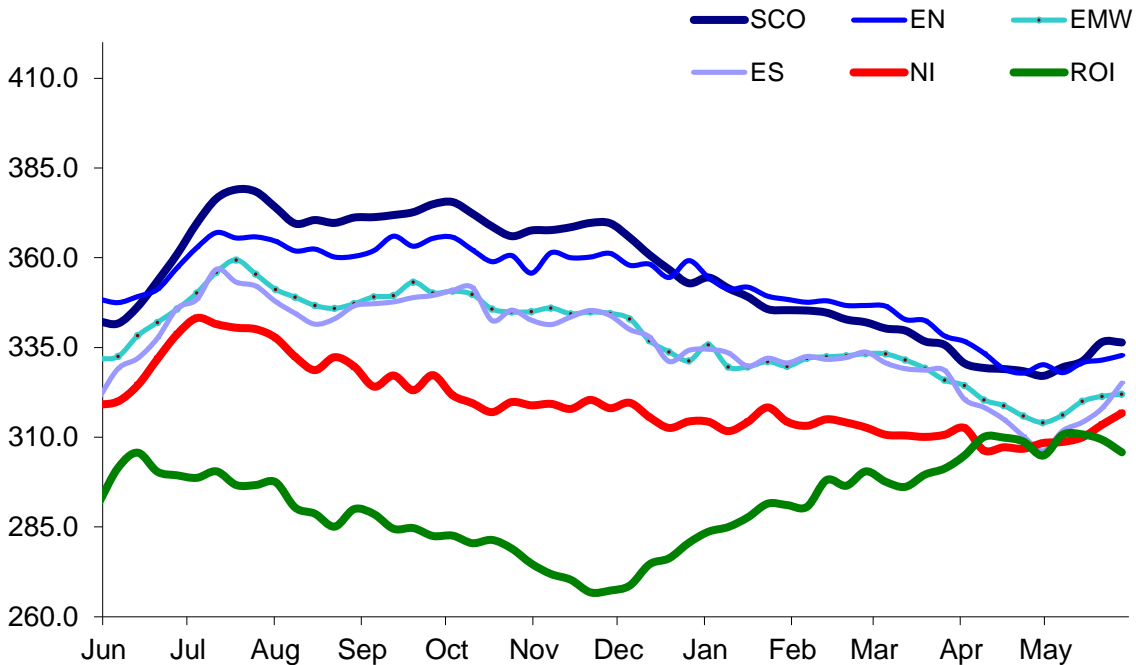
Prices relate to UK Dressing Specification

British Isles R3 Steer Price  
52 Weeks to 30 May 2016



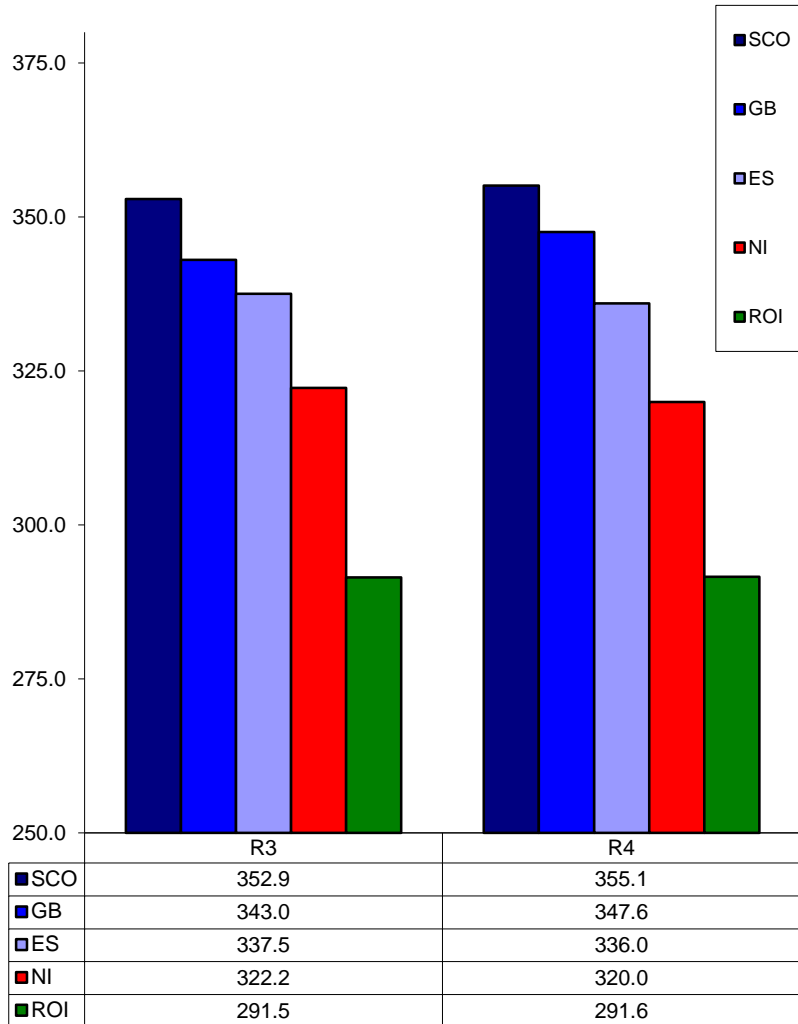
Prices relate to UK Dressing Specification

British Isles R4 Steer Price  
52 Weeks to 30 May 2016



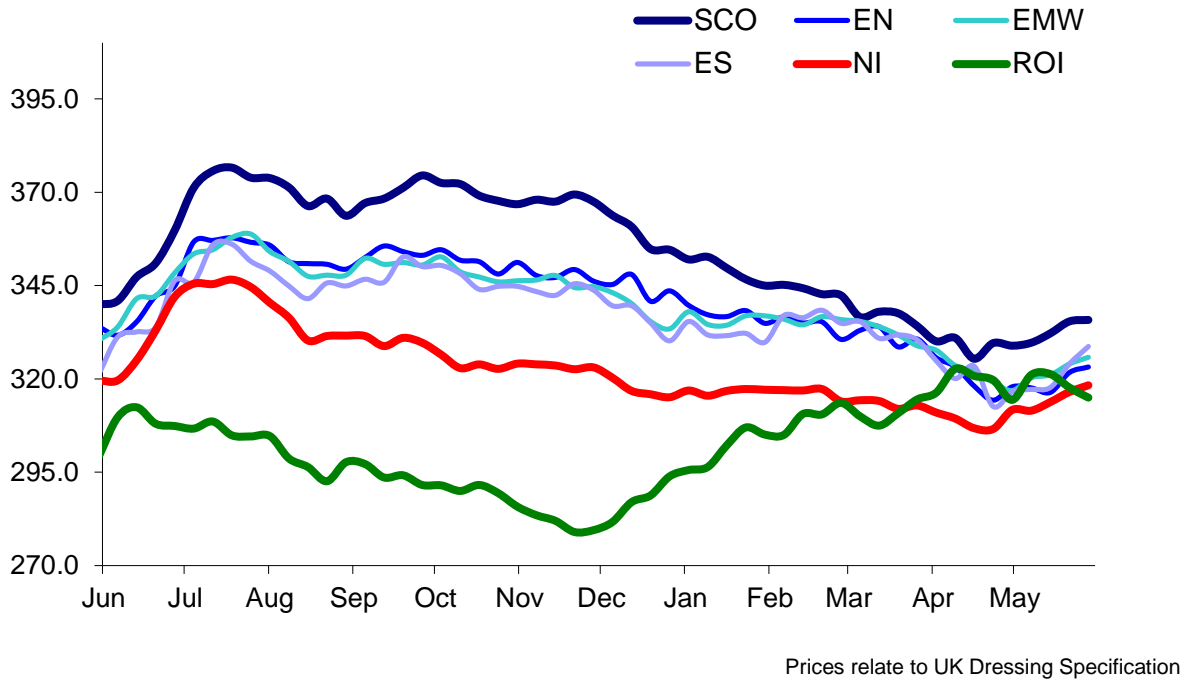
Prices relate to UK Dressing Specification

**British Isles Average R3 and R4 Steer price**  
**52 Weeks to 30 May 2016**

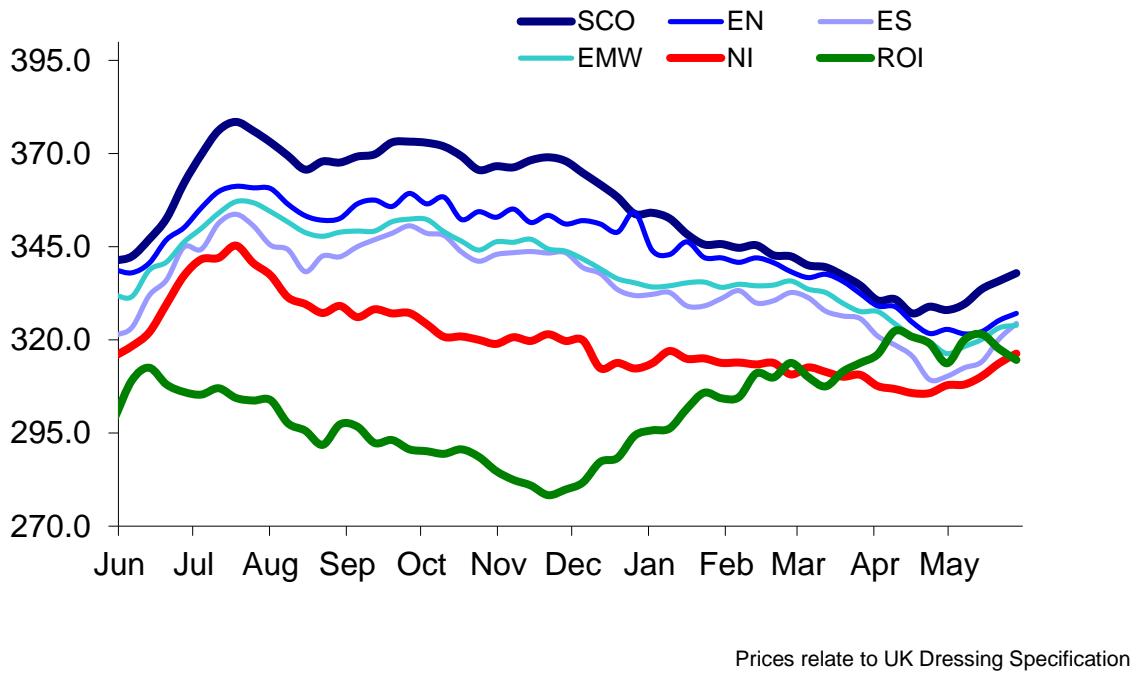


Prices relate to UK Dressing Specification

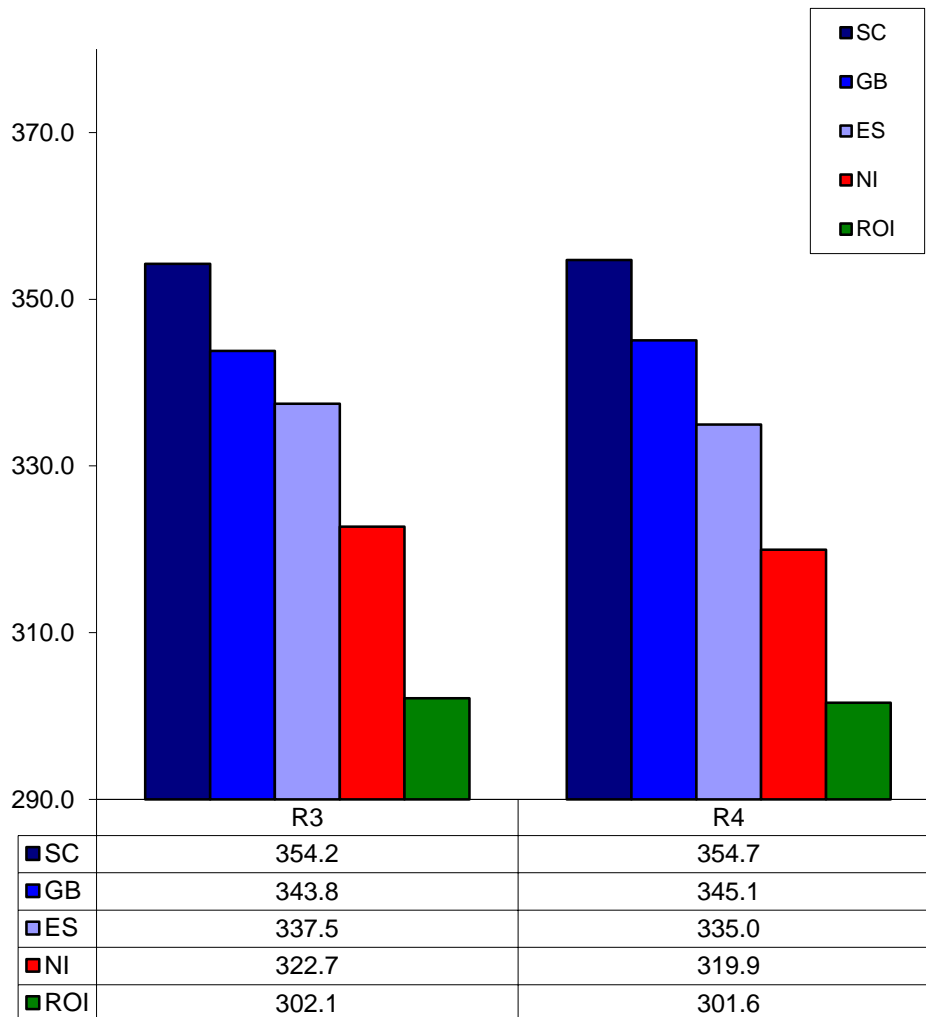
British Isles R3 Heifer Price  
52 Weeks to 30 May 2016



British Isles R4 Heifer Price  
52 Weeks to 30 May 2016

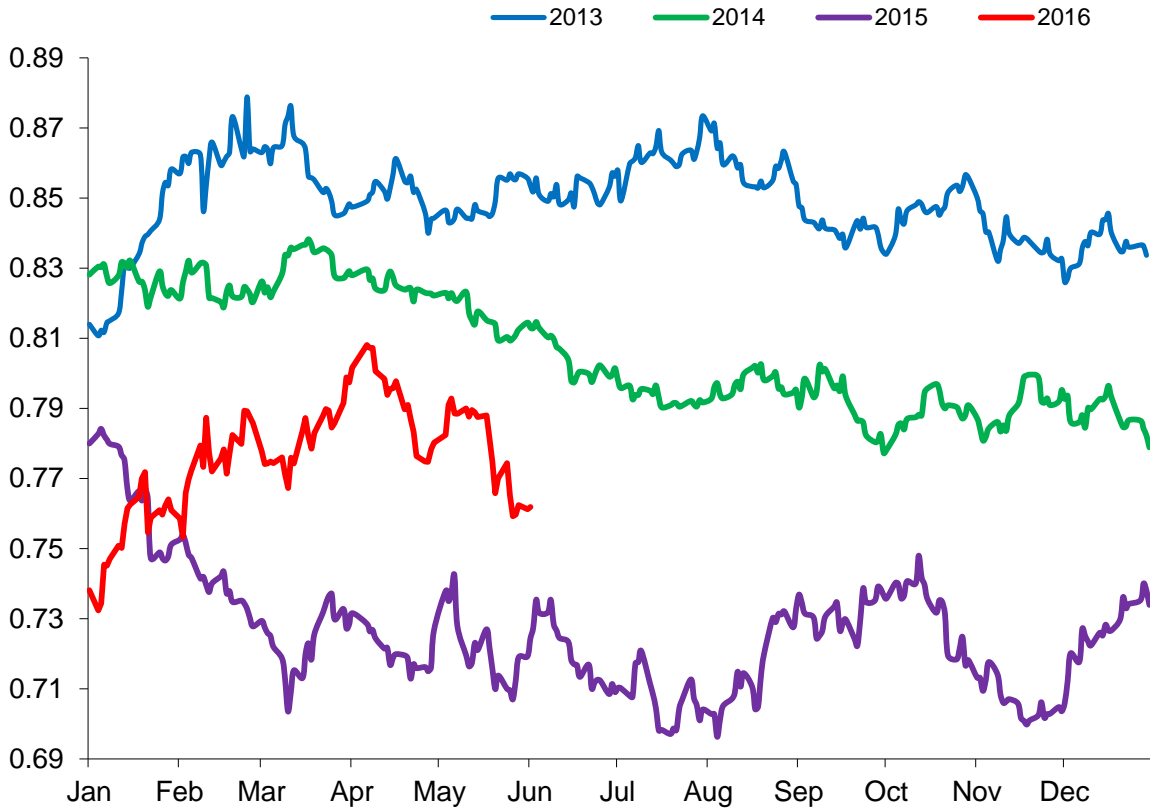


British Isles Average R3 and R4 Heifer price  
52 Weeks to 30 May 2016



Prices relate to UK Dressing Specification

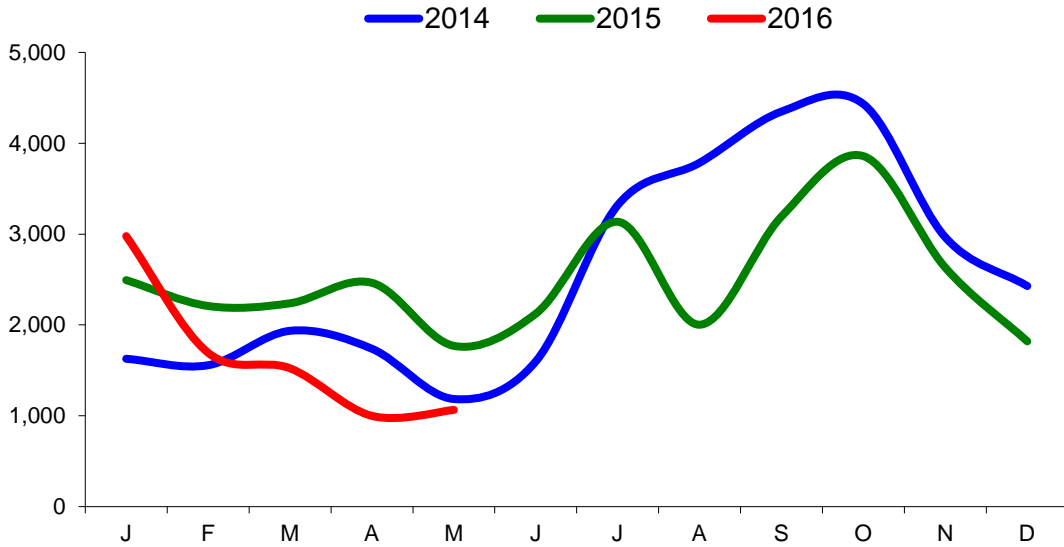
Exchange Rate £ / Euro  
01 January 2013 – 30 May 2016



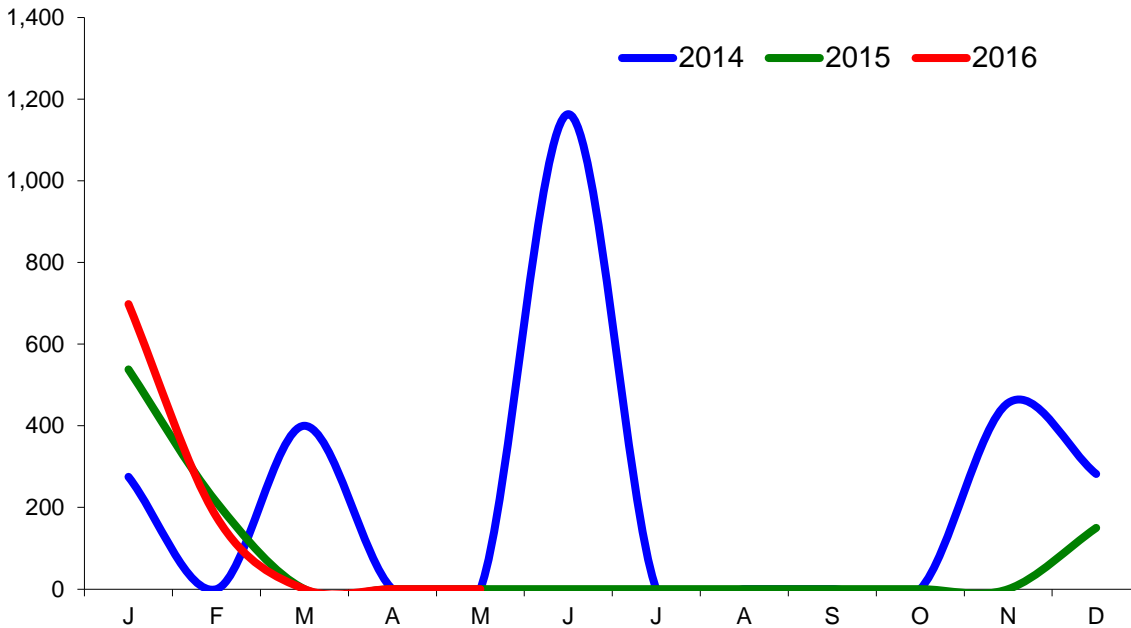


### Imports

#### Monthly Live Imports of Cattle into NI for Direct Slaughter From ROI and GB Combined

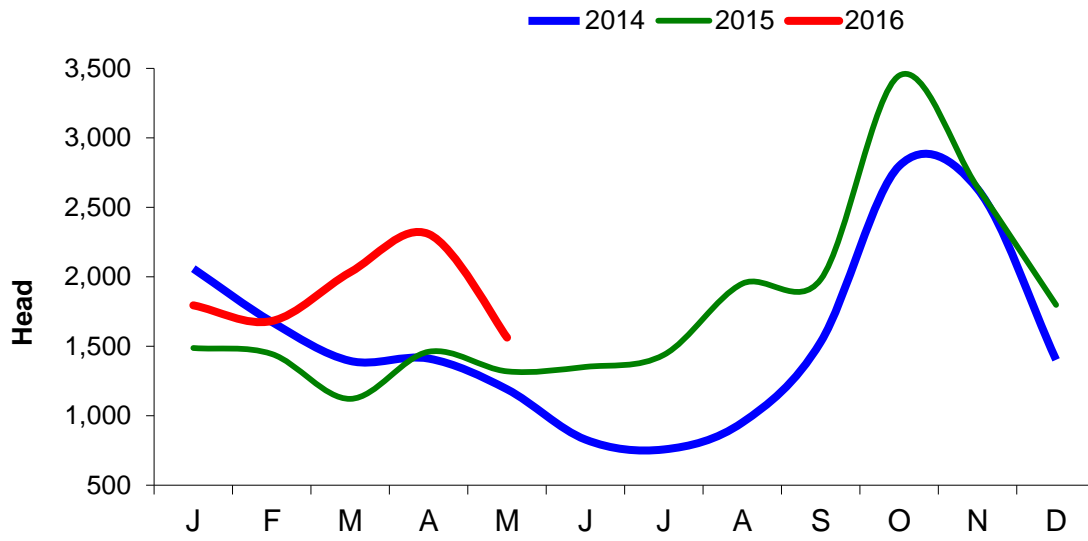


#### Monthly Live Imports of Sheep into NI for Direct Slaughter From ROI and GB Combined



Exports

Monthly Live Exports of Cattle from NI into ROI and GB



Monthly Live Exports of Sheep from NI into ROI and GB

