

LMC

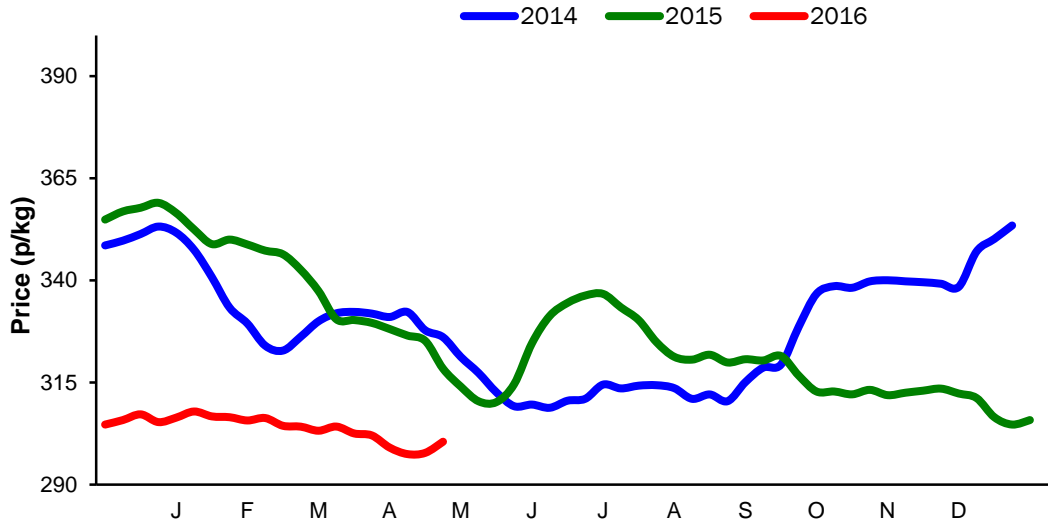
Monthly Economic Review
April 2016

Contents

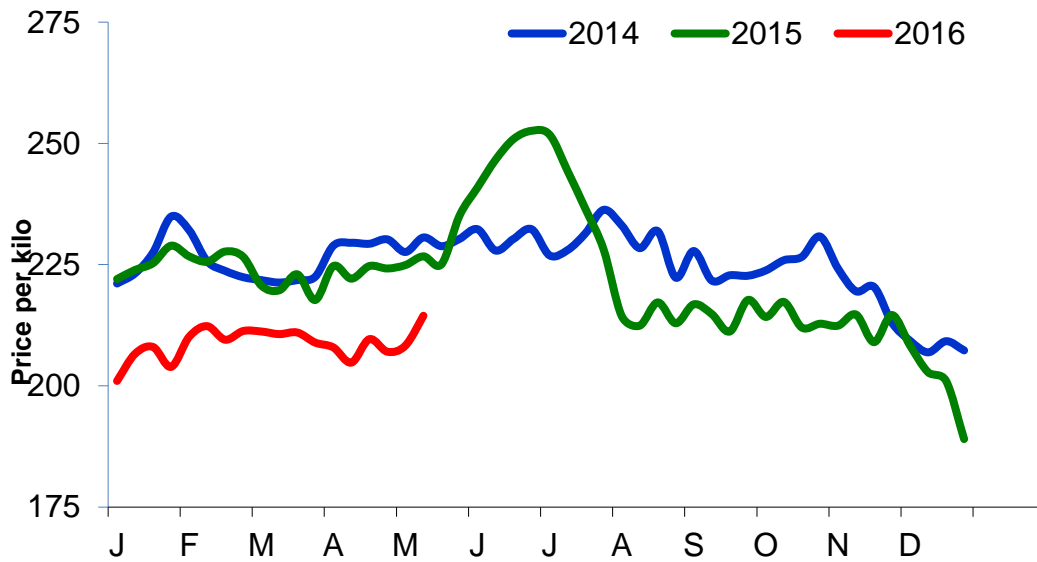
Contents	3
Cattle Prices.....	4
Average NI Clean Cattle Price.....	4
Average NI Cow Price	4
Cattle Slaughtering.....	5
NI Clean Cattle Slaughtering – Cumulative	5
NI Weekly Clean Cattle Slaughtering	5
NI Weekly Cow Slaughtering.....	5
Sheep Prices.....	6
Average NI Lamb / Hogget Price	6
Sheep Slaughtering.....	7
Cumulative Lamb & Hogget Slaughtering.....	7
Total Weekly Lamb & Hogget Slaughtering.....	7
Total Weekly Ewe and Ram Slaughtering	7
Total Carcase Weight Produced for the Food Chain.....	8
Change in Throughput / Production	9
Supply and Price.....	10
NI Lamb/Hogget Kill vs. Average Lamb / Hogget Price	10
NI Clean Cattle Kill vs. Average Clean Cattle Price.....	10
British Isles Price Comparisons	11
UK Average Cow Prices	11
Weekly UK Cow Prices	11
British Isles R3 Steer Price	12
British Isles R4 Steer Price	12
British Isles Average R3 and R4 Steer price	13
British Isles R3 Heifer Price	14
British Isles R4 Heifer Price	14
British Isles Average R3 and R4 Heifer price	15
Exchange Rate £ / Euro.....	17
Imports.....	18
Monthly Live Imports of Cattle into NI for Direct Slaughter.....	18
Monthly Live Imports of Sheep into NI for Direct Slaughter.....	18
Exports.....	19
Monthly Live Exports of Cattle from NI into Rol and GB.....	19
Monthly live Exports of Sheep from NI into Rol and GB.....	19

Cattle Prices

Average NI Clean Cattle Price

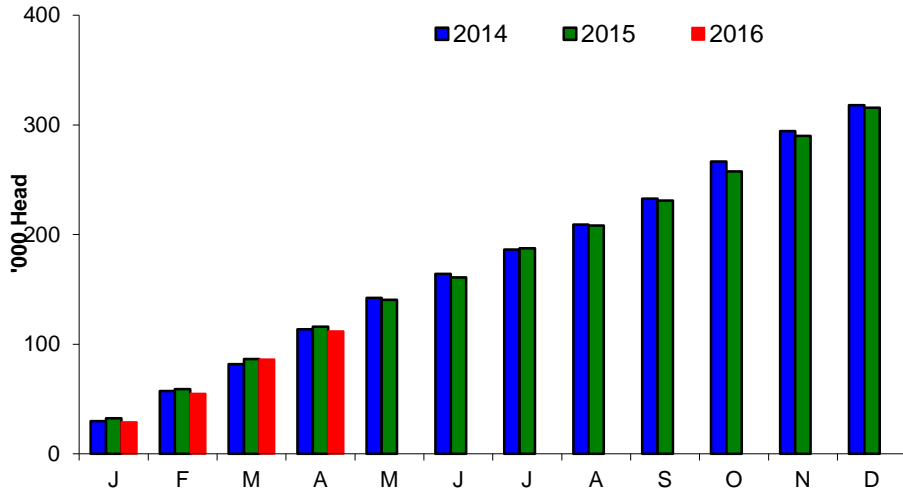


Average NI Cow Price

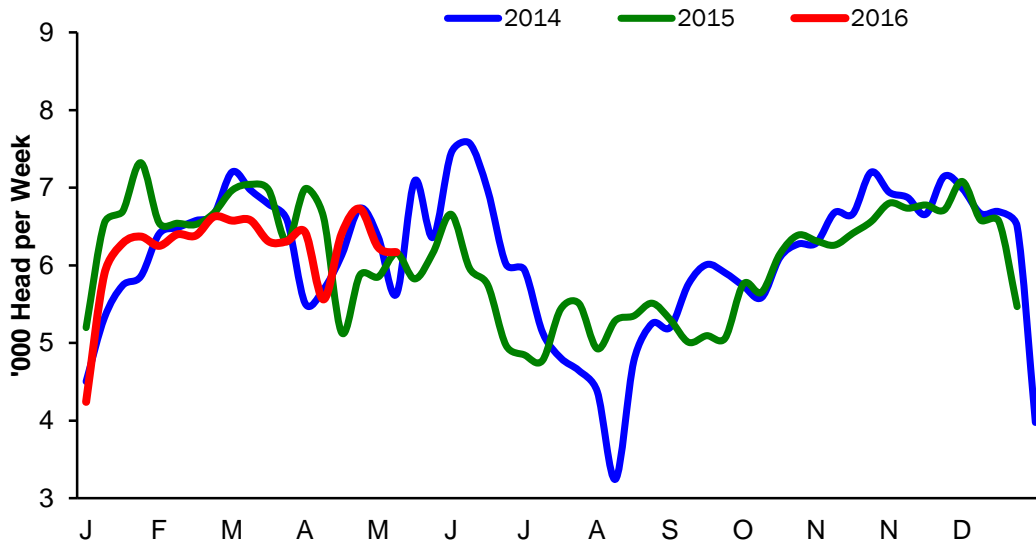


Cattle Slaughtering

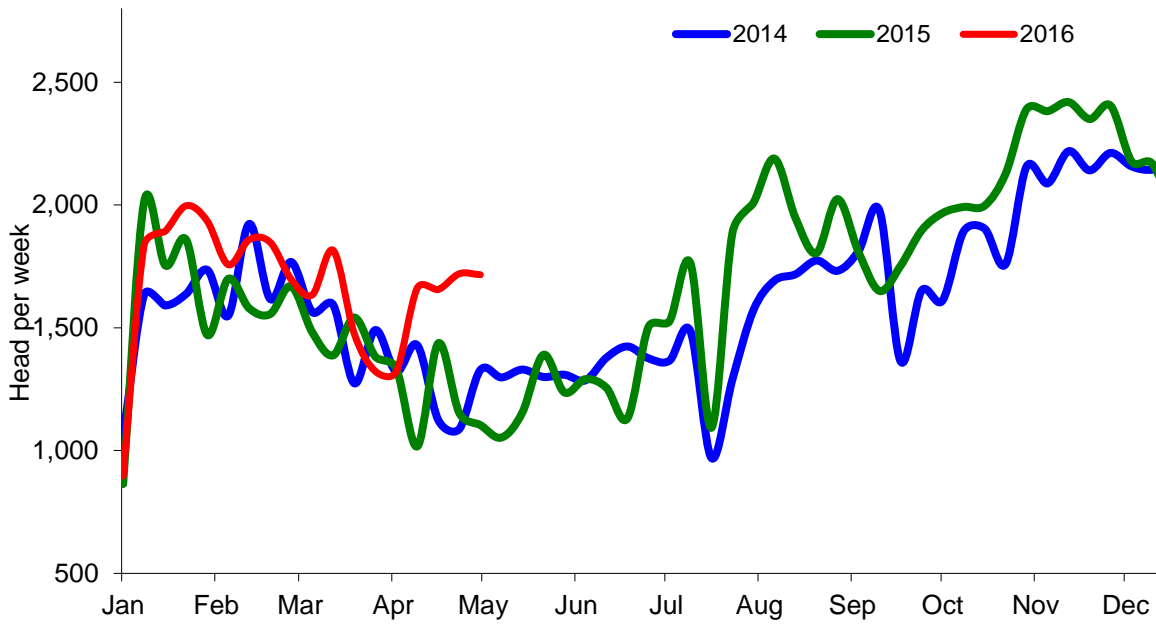
NI Clean Cattle Slaughtering – Cumulative



NI Weekly Clean Cattle Slaughtering

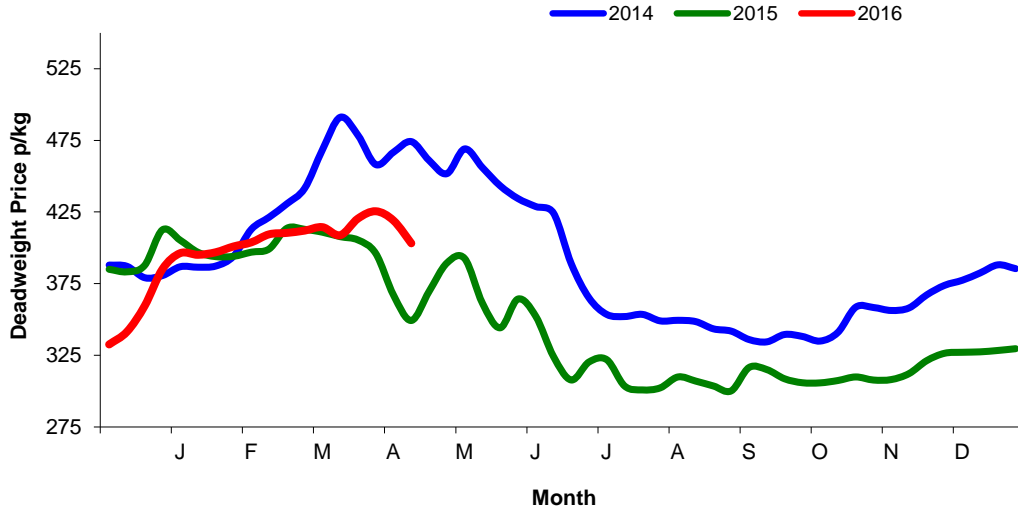


NI Weekly Cow Slaughtering



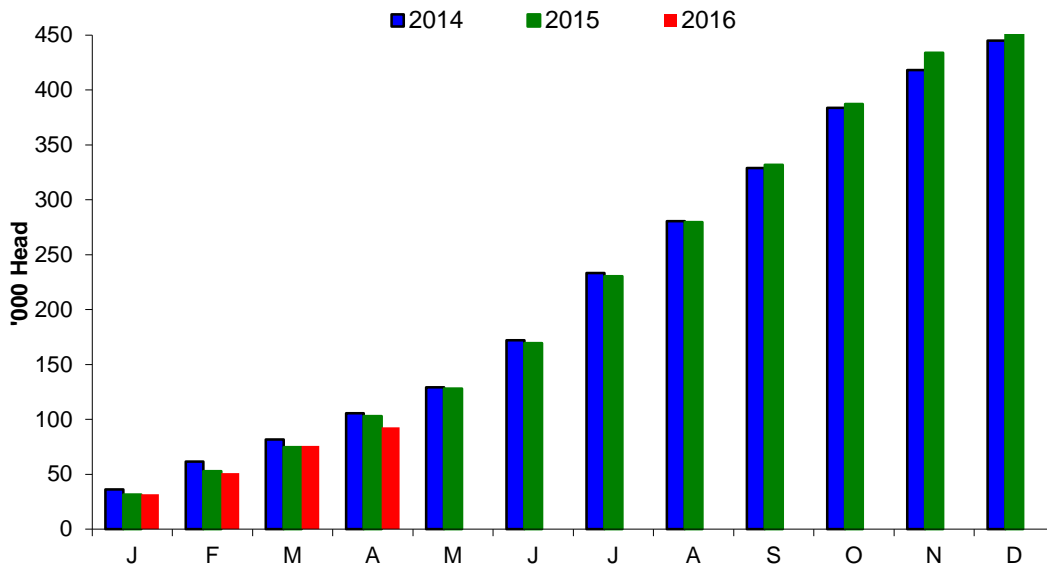
Sheep Prices

Average Deadweight NI Hogget / Lamb Price

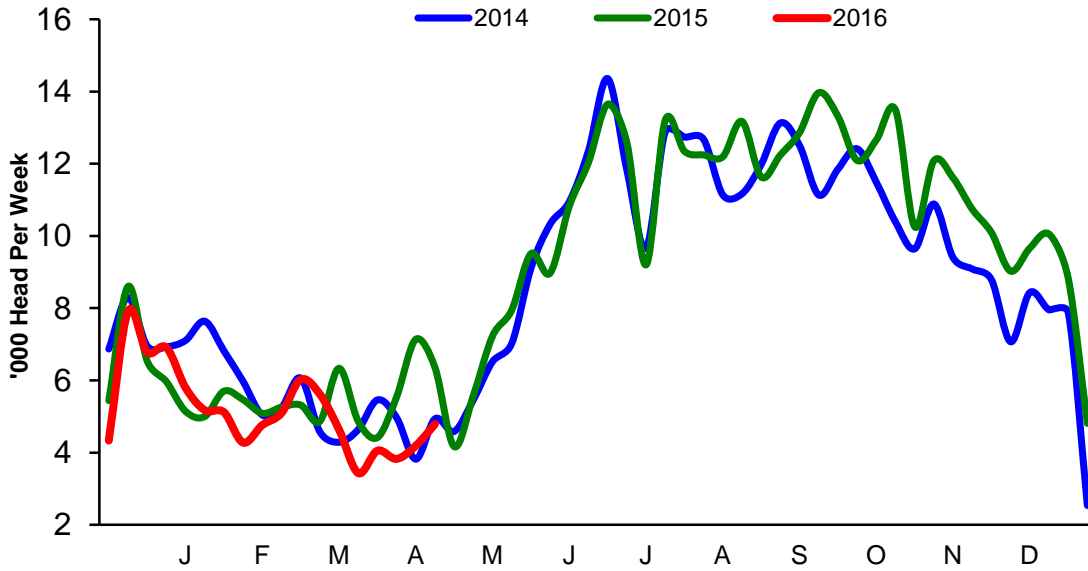


Sheep Slaughterings

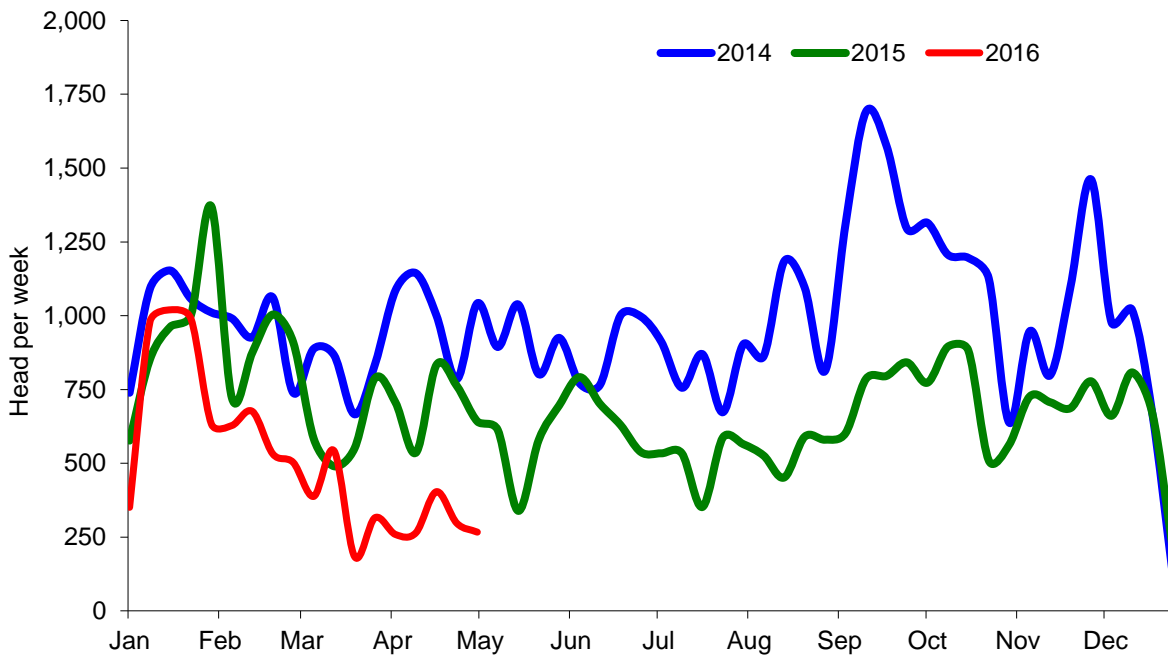
Cumulative Lamb & Hogget Slaughterings



Total Weekly Lamb & Hogget Slaughtering



Total Weekly Ewe and Ram Slaughtering



Market Information April 2016
Page 9

NI CATTLE AND SHEEP SLAUGHTERINGS FOR THE FOODCHAIN						
	April			Year to Date		
	(4 weeks ended 30/04/16)			(4 weeks ended 30/04/16)		
	Apr-15	Apr-16	% Change	2015	2016	Change
CATTLE						
Steers	12,253	13,191	+8%	12,253	13,191	+8%
Heifers	8,981	9,097	+1%	8,981	9,097	+1%
Young Bulls / Calves	2,197	3,251	+48%	2,197	3,251	+48%
Total Prime Cattle	23,431	25,539	+9%	23,431	25,539	+9%
Calves	474	625	+32%	474	625	+0%
Cows	4,941	6,754	+37%	4,941	6,754	+37%
Mature Bulls	185	288	+56%	185	288	+56%
Total Cattle	29,031	33,206	+14%	29,031	33,206	+14%
SHEEP						
Lambs & Hoggets	21,966	16,862	-23%	21,966	16,862	-23%
Ewes & Rams	2,837	1,233	-57%	2,837	1,233	-57%
Total Sheep	24,803	18,095	-27%	24,803	18,095	-27%
The above figures are provisional; any amendments will be incorporated in the cumulative data (source DARD).						

NI BEEF AND SHEEPMEAT PRODUCTION - FOODCHAIN						
	April			Year to Date		
	(4 weeks ended 30/04/16)			(4 weeks ended 30/04/16)		
	Apr-15	Apr-16	% Change	2015	2016	Change
BEEF						
Steers	4,277	4,670	+9%	4,277	4,670	+9%
Heifers	2,843	2,898	+2%	2,843	2,898	+2%
Young Bulls	730	1,049	+44%	730	1,049	+44%
Total Prime Beef	7,850	8,617	+10%	7,850	8,617	+10%
Calves	101	129	+29%	101	129	+29%
Cows	1,483	2,064	+39%	1,483	2,064	+39%
Mature Bulls	81	124	+53%	81	124	+53%
Total Beef	9,514	10,934	+15%	9,514	10,934	+15%
SHEEPMEAT						
Lambs & Hoggets	493	367	-26%	493	367	-26%
Ewes & Rams	79	37	-53%	79	37	-53%
Total Sheepmeat	572	404	-29%	572	404	-29%
The above figures are provisional; any amendments will be incorporated in the cumulative data (source DARD).						

Total Carcase Weight Produced for the Food Chain
Year-to-Date (tonnes – t.)

Month	Prime Cattle		Cows & Bulls		Lambs/Hoggets		Ewes & Rams	
	2015	2016	2015	2016	2015	2016	2015	2016
January	10,829	9,924	2,569	2,772	712	675	127	107
February	8,919	8,906	2,085	2,334	476	422	92	61
March	9,199	10,704	1,882	2,466	482	551	66	47
April	7,850	8,617	1,564	2,188	493	367	79	37
May								
June								
July								
August								
September								
October								
November								
December								
Total	36,796	38,151	8,101	9,760	2,163	2,015	363	252
Change (t.)	1,355		1,659		-148		-112	
% Change	3.68%		20.48%		-6.84%		-30.77%	

**excludes calves*

Change in Throughput / Production
Last 4 weeks 2015/2016

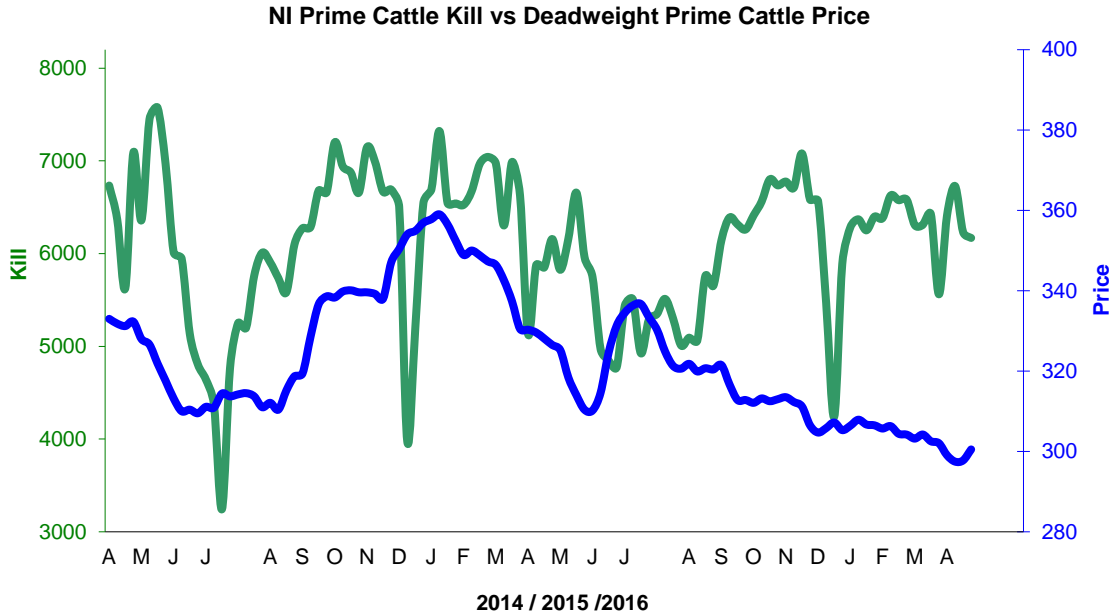
Change in Throughput / Production 2015/2016

April

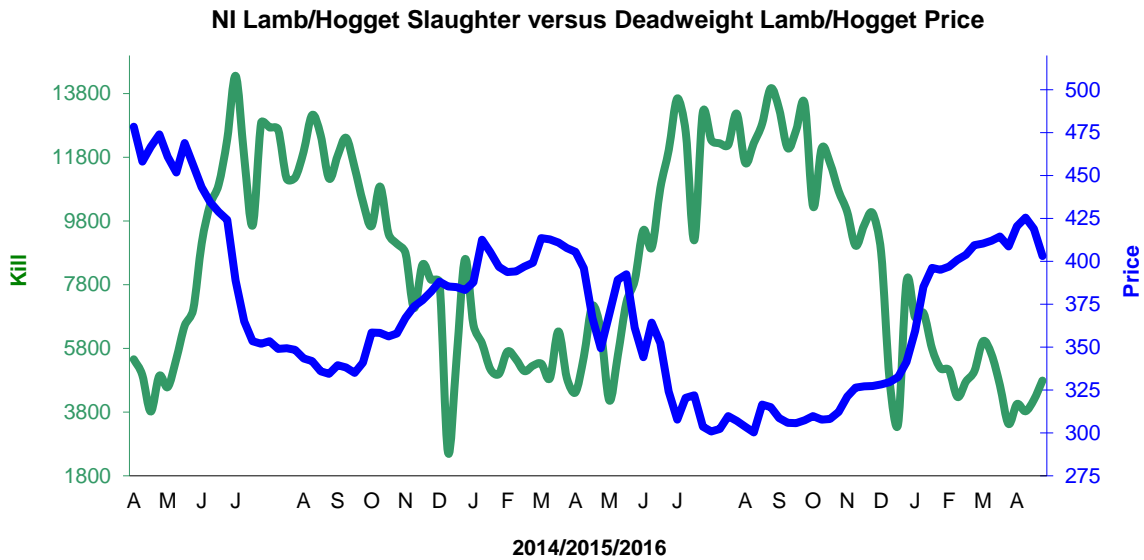
2015/2016	Number	Tonnage	ACW Kg
Prime	9.0%	9.8%	2.41
Cows	36.7%	39.2%	5.31
Total	14.4%	14.9%	1.57
Lamb	-23.2%	-25.7%	-0.74
Ewes and Rams	-56.5%	-52.9%	2.35
Total Sheep	-27.0%	-29.5%	-0.77

Supply and Price

NI Clean Cattle Kill vs. Average Clean Cattle Price



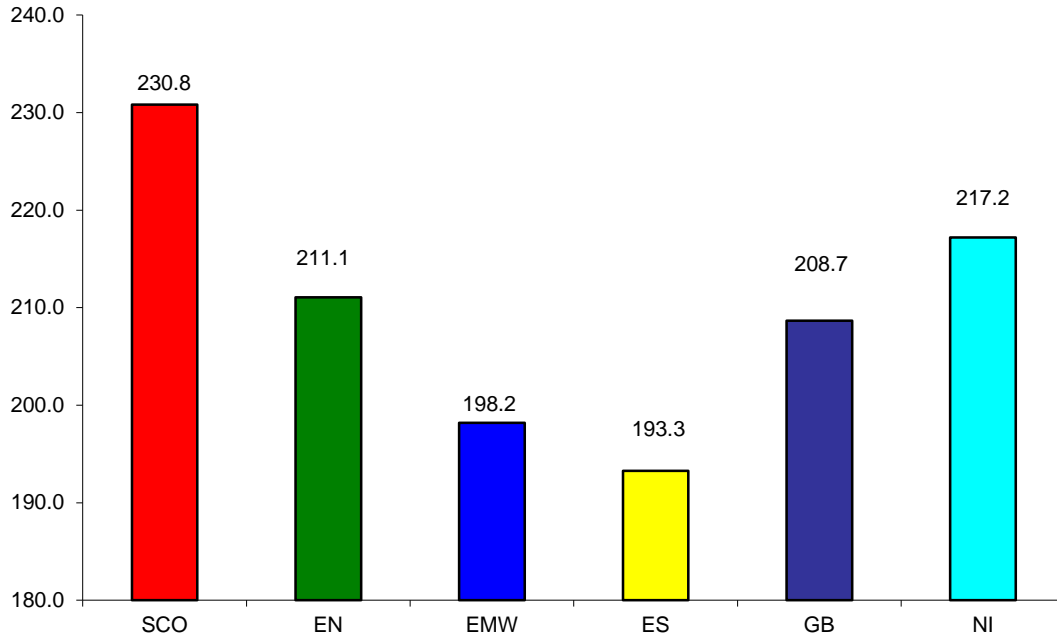
NI Lamb/Hogget Kill vs. Average Lamb / Hogget Price



Green	Supply (Kill)
Blue	Price

BRITISH ISLES COMPARISONS

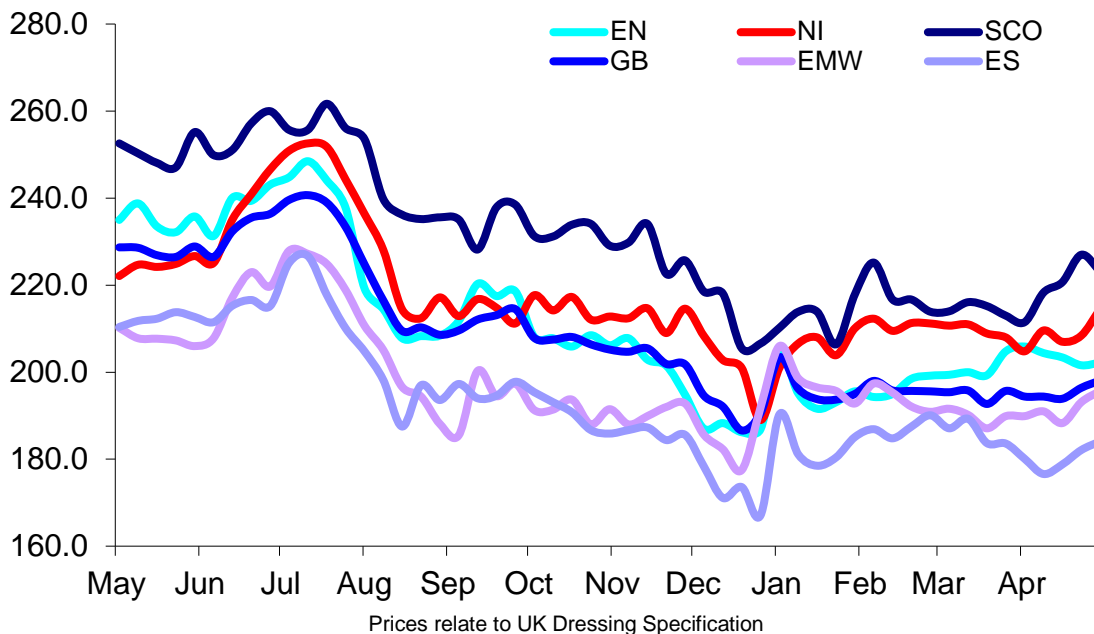
**UK Average Cow Prices
52 Weeks to 30 April 2016**



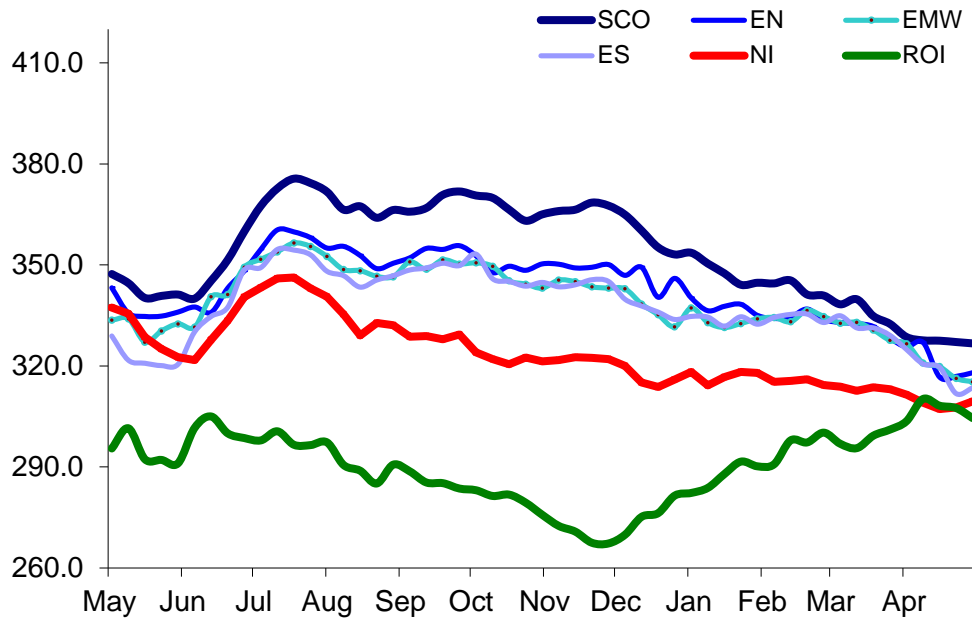
SCO	Scotland
EN	England North
EMW	England Midlands and Wales
ES	England South
NI	Northern Ireland
GB	Great Britain

Prices relate to UK Dressing Specification

**Weekly UK Cow Prices
52 Weeks to 30 April 2016**

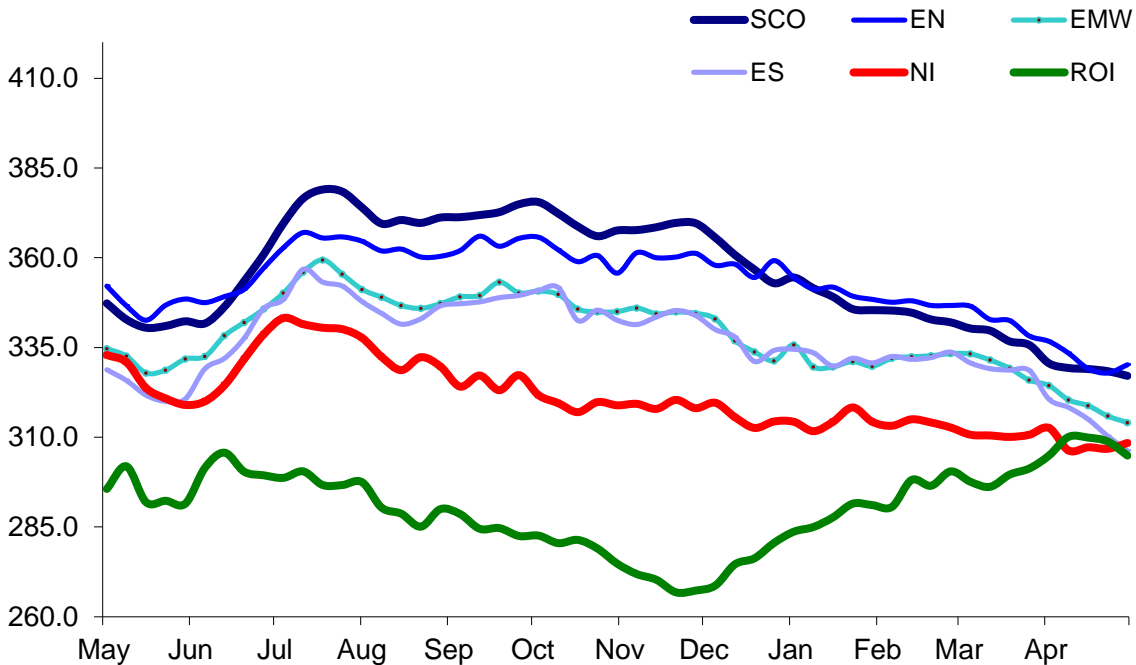


British Isles R3 Steer Price
52 Weeks to 30 April 2016



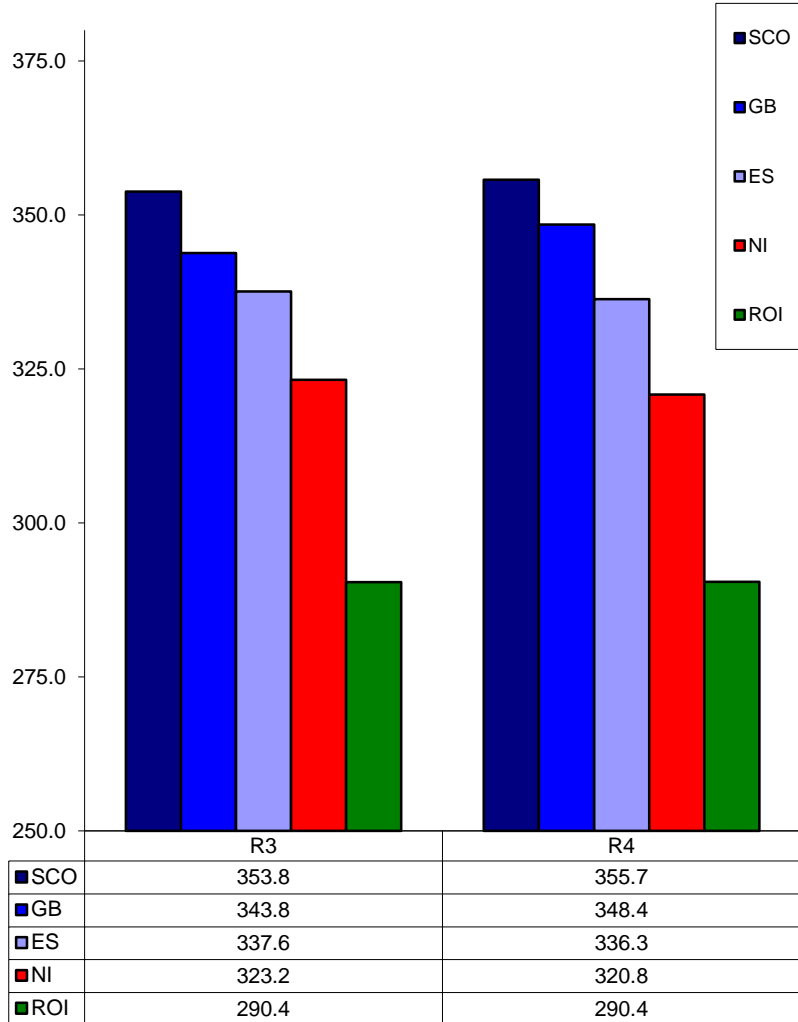
Prices relate to UK Dressing Specification

British Isles R4 Steer Price
52 Weeks to 30 April 2016



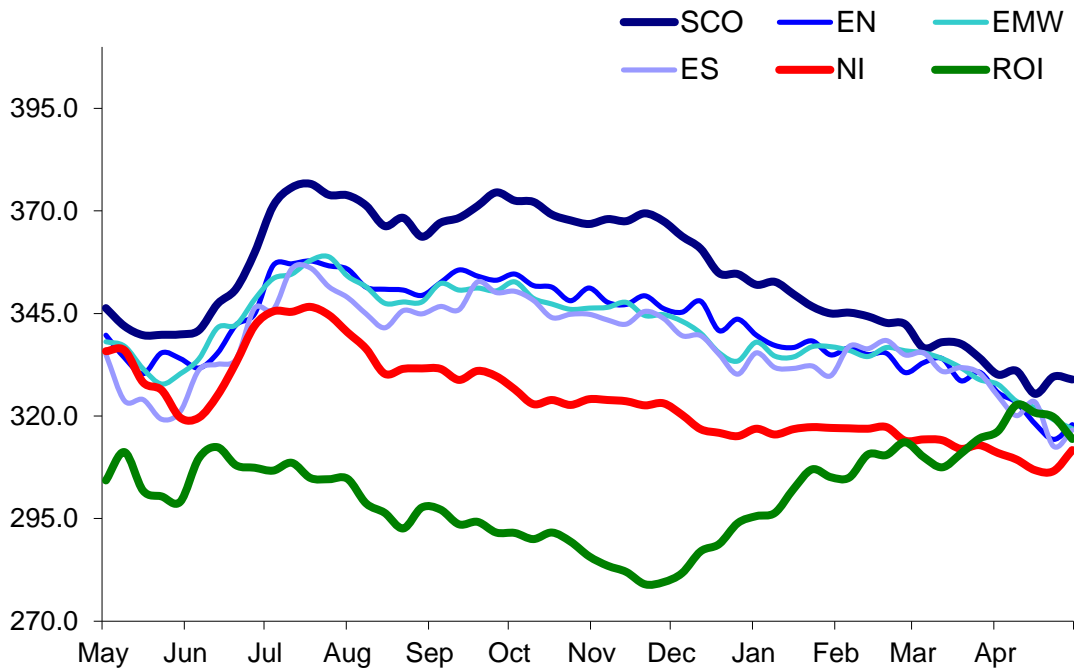
Prices relate to UK Dressing Specification

British Isles Average R3 and R4 Steer price
52 Weeks to 30 April 2016



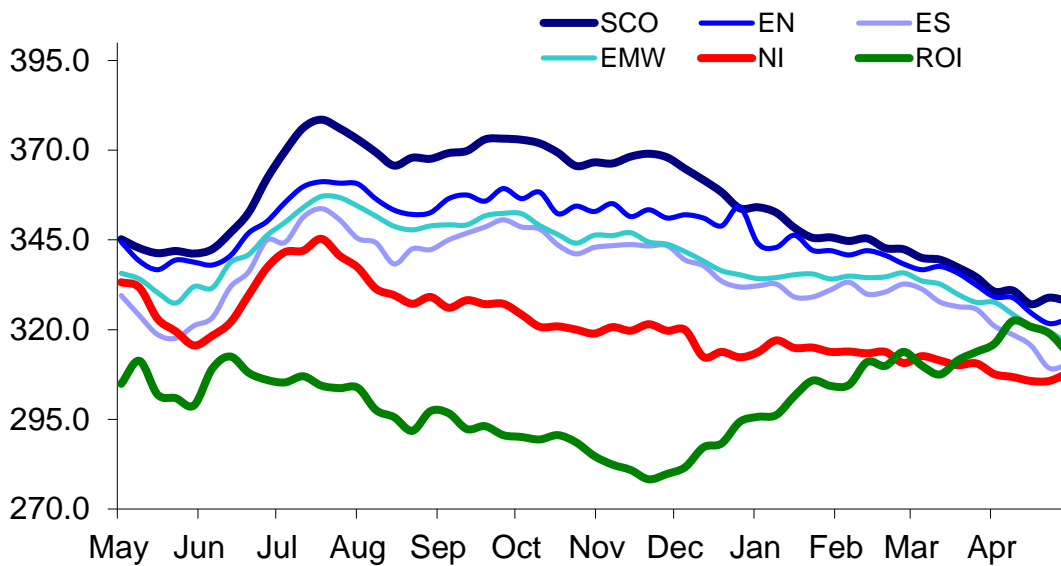
Prices relate to UK Dressing Specification

British Isles R3 Heifer Price
52 Weeks to 30 April 2016



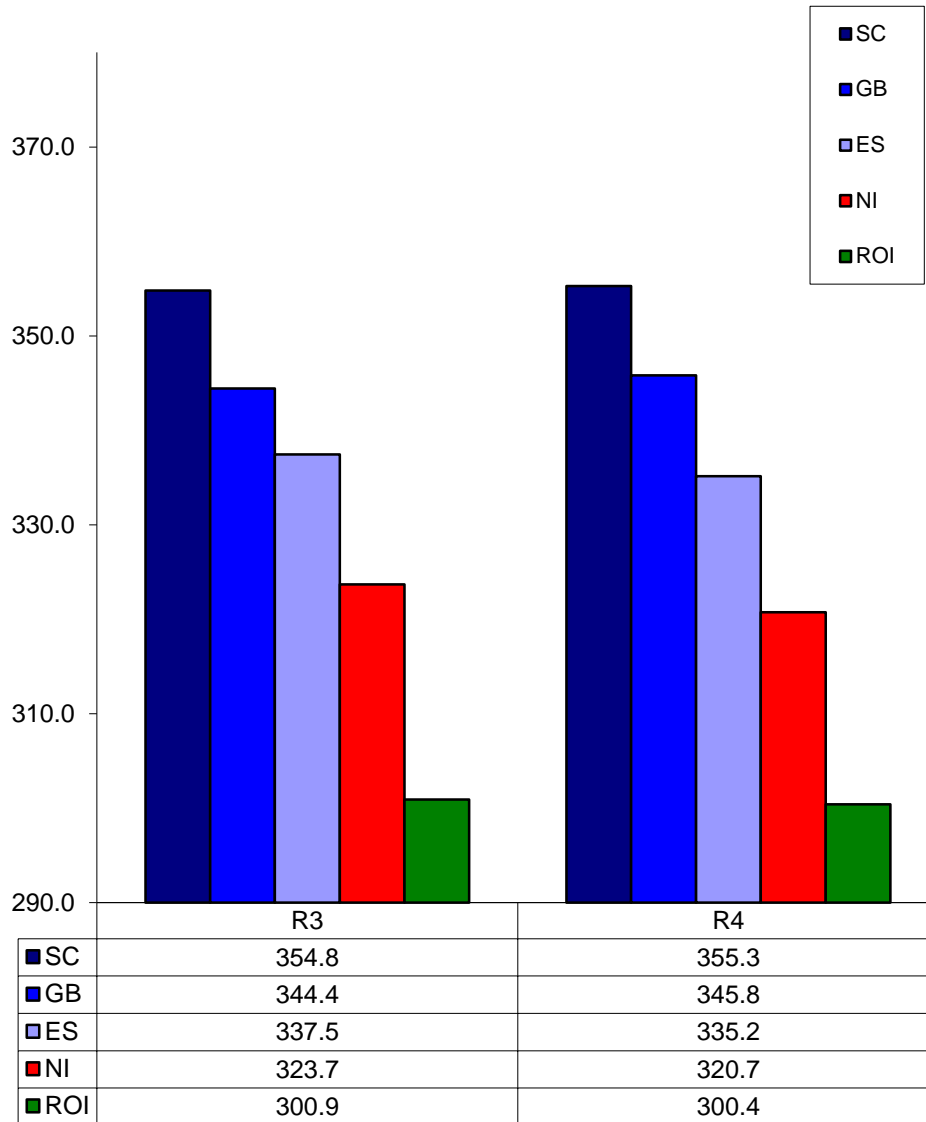
Prices relate to UK Dressing Specification

British Isles R4 Heifer Price
52 Weeks to 30 April 2016



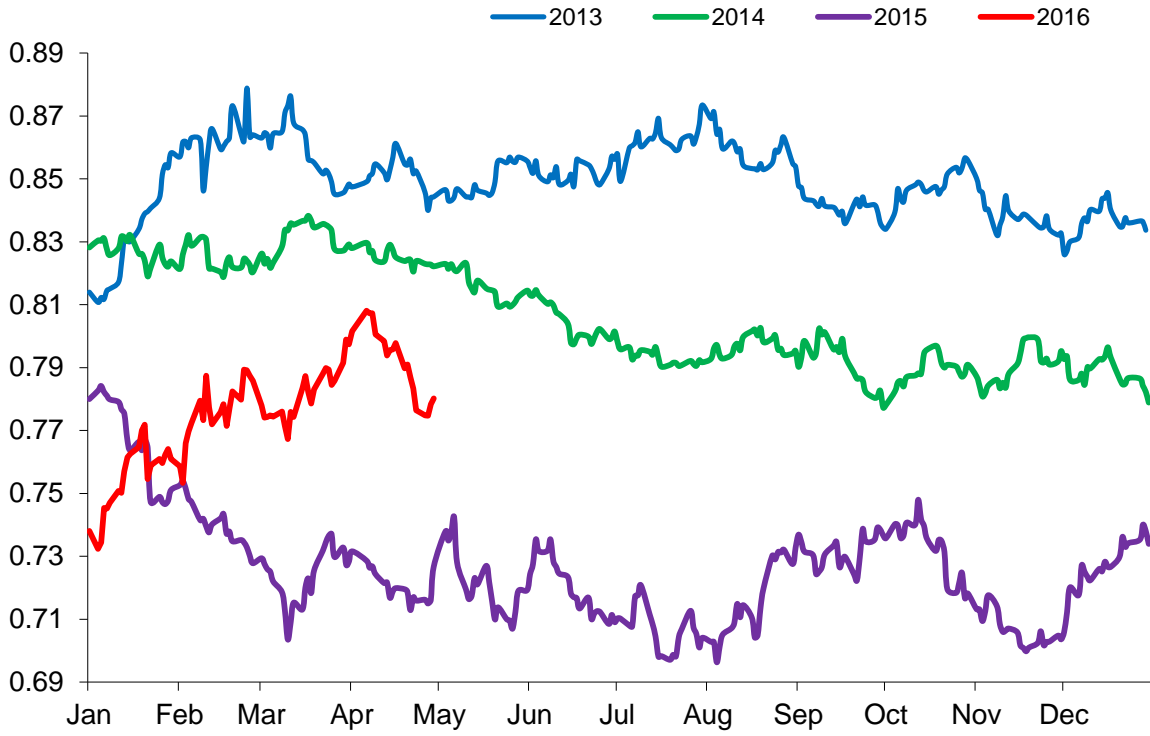
Prices relate to UK Dressing Specification

British Isles Average R3 and R4 Heifer price
52 Weeks to 30 April 2016



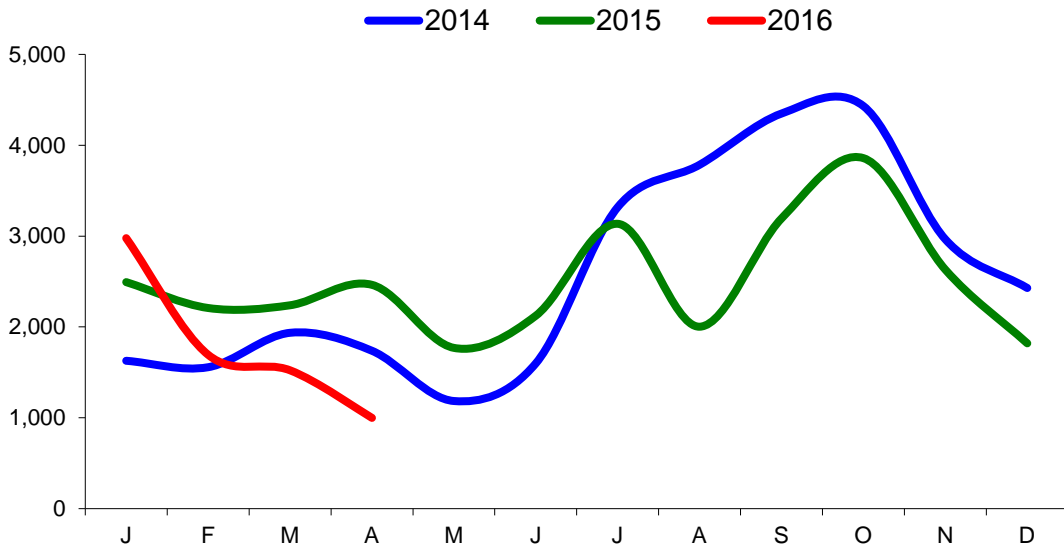
Prices relate to UK Dressing Specification

Exchange Rate £ / Euro
01 April 2013 – 30 April 2016

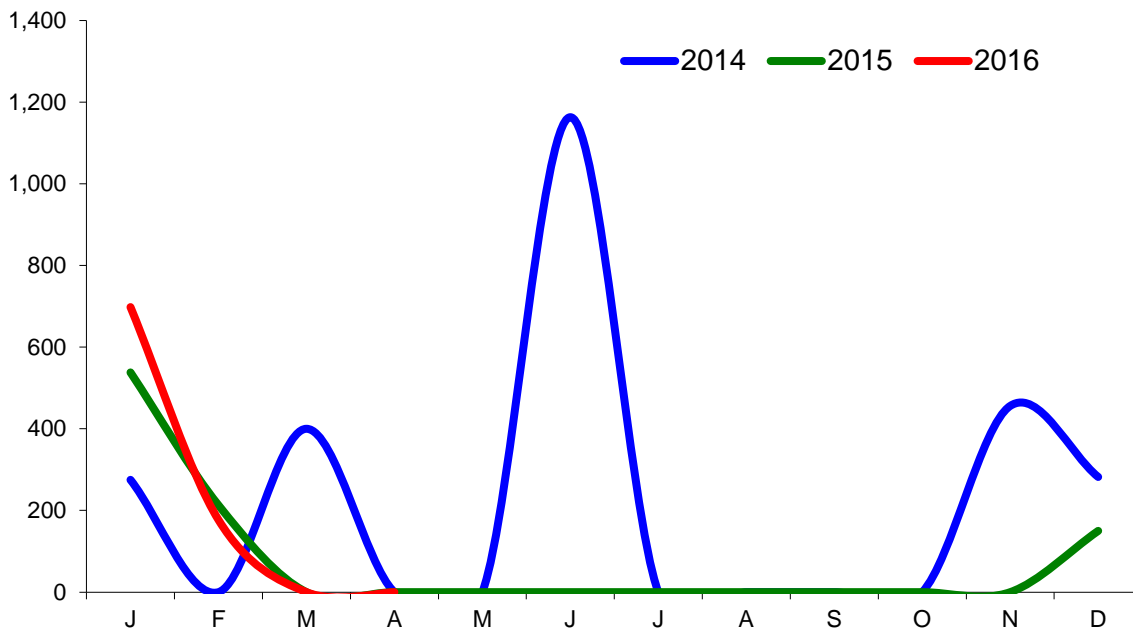


Imports

Monthly Live Imports of Cattle into NI for Direct Slaughter From ROI and GB Combined

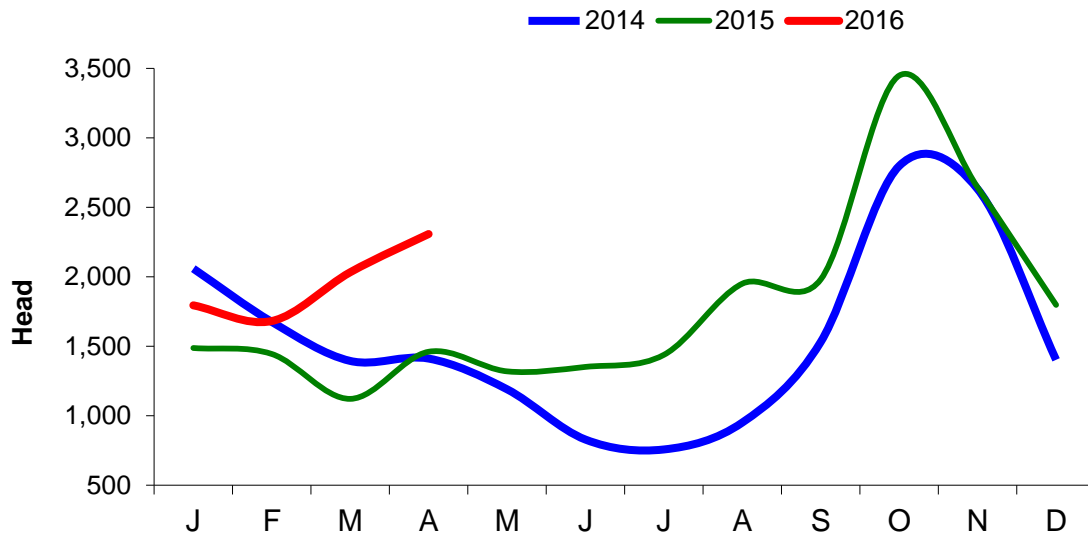


Monthly Live Imports of Sheep into NI for Direct Slaughter From ROI and GB Combined



Exports

Monthly Live Exports of Cattle from NI into ROI and GB



Monthly Live Exports of Sheep from NI into ROI and GB

