



**Monthly Economic Review  
March 2016**

Please note this review includes week 53 when comparing months.

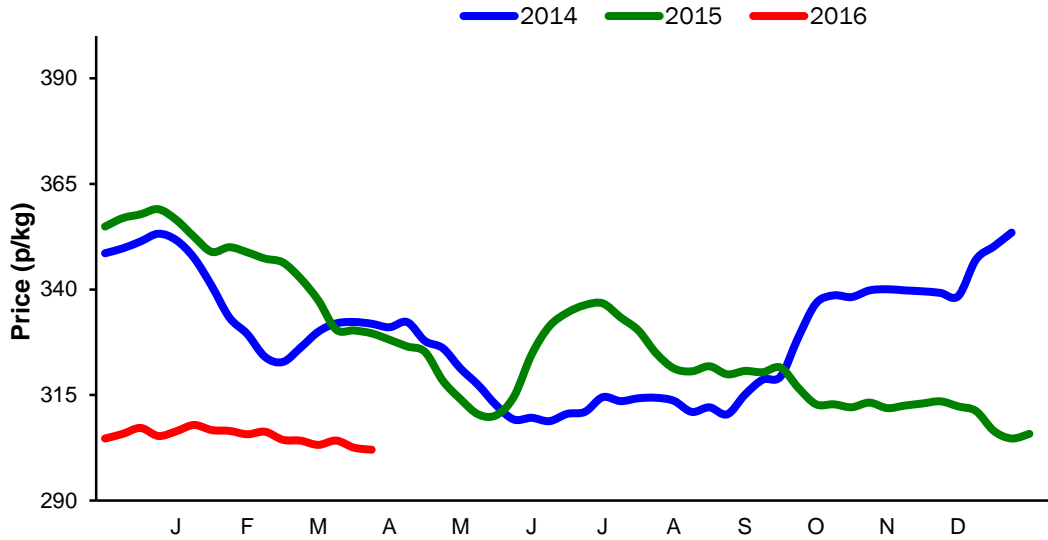


## Contents

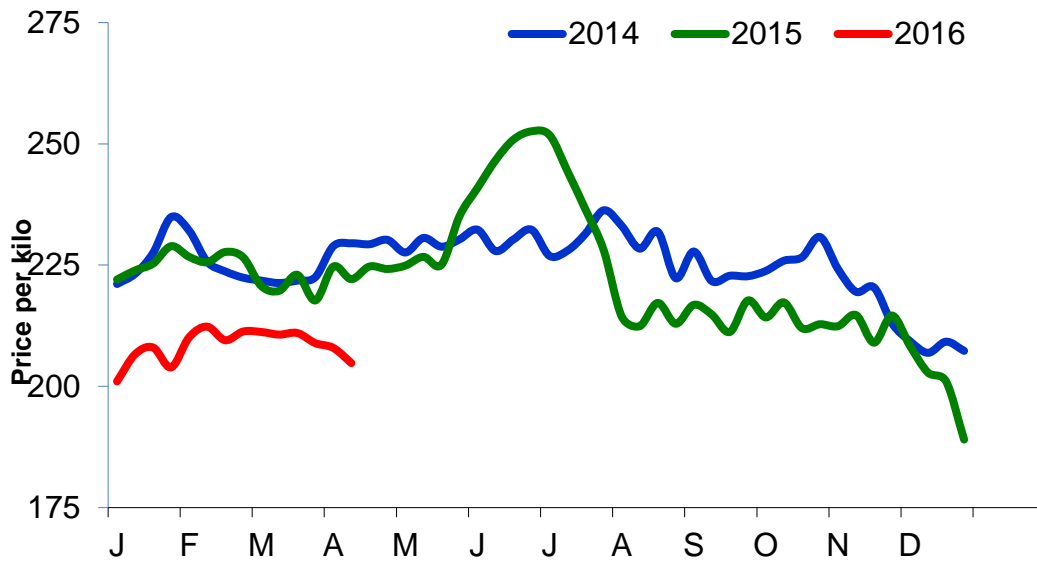
Contents .....	3
Cattle Prices.....	4
Average NI Clean Cattle Price.....	4
Average NI Cow Price .....	4
Cattle Slaughterings.....	5
NI Clean Cattle Slaughterings – Cumulative .....	5
NI Weekly Clean Cattle Slaughterings .....	5
NI Weekly Cow Slaughterings.....	5
Sheep Prices.....	6
Average NI Lamb / Hogget Price.....	6
Sheep Slaughterings.....	7
Cumulative Lamb & Hogget Slaughterings.....	7
Total Weekly Lamb & Hogget Slaughterings.....	7
Total Weekly Ewe and Ram Slaughterings .....	7
Total Carcase Weight Produced for the Food Chain.....	8
Change in Throughput / Production .....	9
Supply and Price.....	10
NI Lamb/Hogget Kill vs. Average Lamb / Hogget Price .....	10
NI Clean Cattle Kill vs. Average Clean Cattle Price.....	10
British Isles Price Comparisons .....	11
UK Average Cow Prices .....	11
Weekly UK Cow Prices .....	11
British Isles R3 Steer Price .....	12
British Isles R4 Steer Price .....	12
British Isles Average R3 and R4 Steer price .....	13
British Isles R3 Heifer Price .....	14
British Isles R4 Heifer Price .....	14
British Isles Average R3 and R4 Heifer price .....	15
Exchange Rate £ / Euro.....	17
Imports.....	18
Monthly Live Imports of Cattle into NI for Direct Slaughter.....	18
Monthly Live Imports of Sheep into NI for Direct Slaughter.....	18
Exports.....	19
Monthly Live Exports of Cattle from NI into Rol and GB.....	19
Monthly live Exports of Sheep from NI into Rol and GB.....	19

### Cattle Prices

#### Average NI Clean Cattle Price

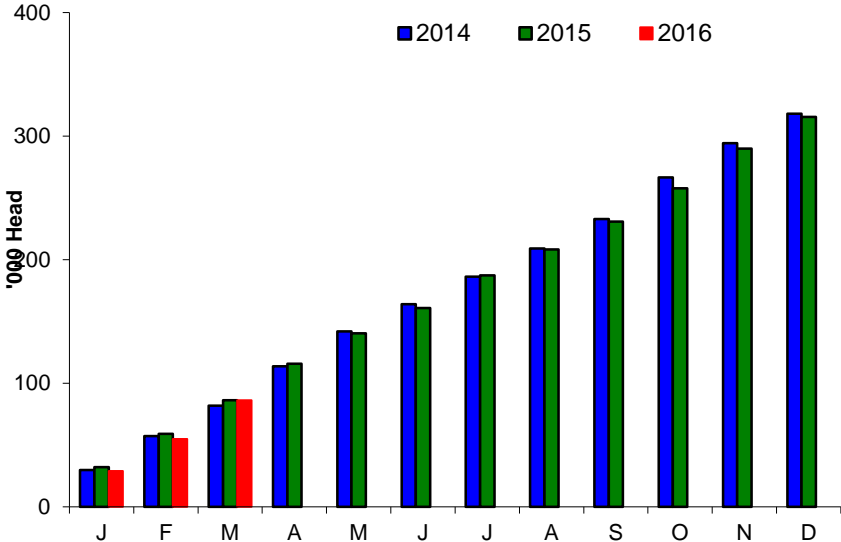


#### Average NI Cow Price

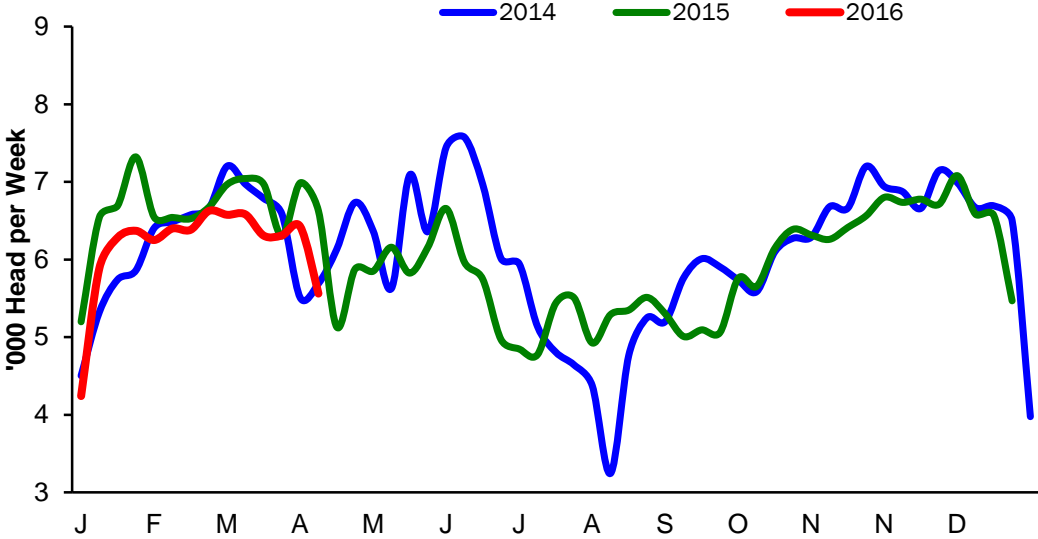


### Cattle Slaughtering

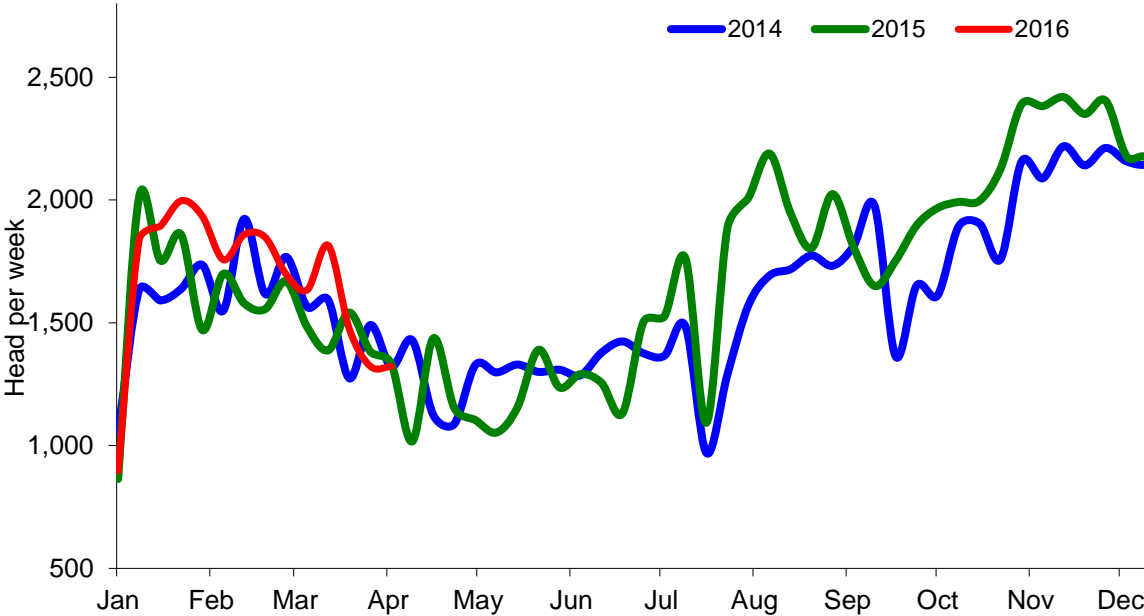
#### NI Clean Cattle Slaughtering – Cumulative



#### NI Weekly Clean Cattle Slaughtering

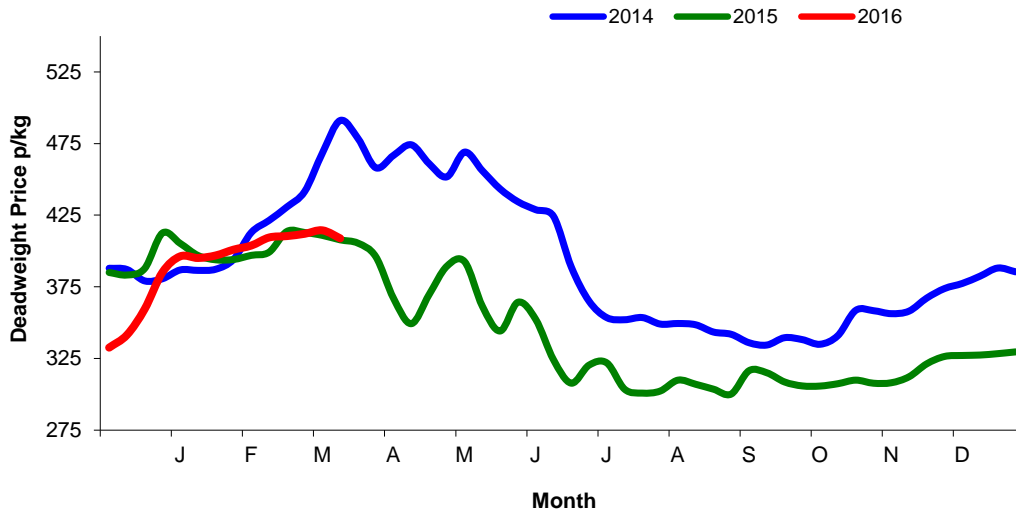


NI Weekly Cow Slaughtering



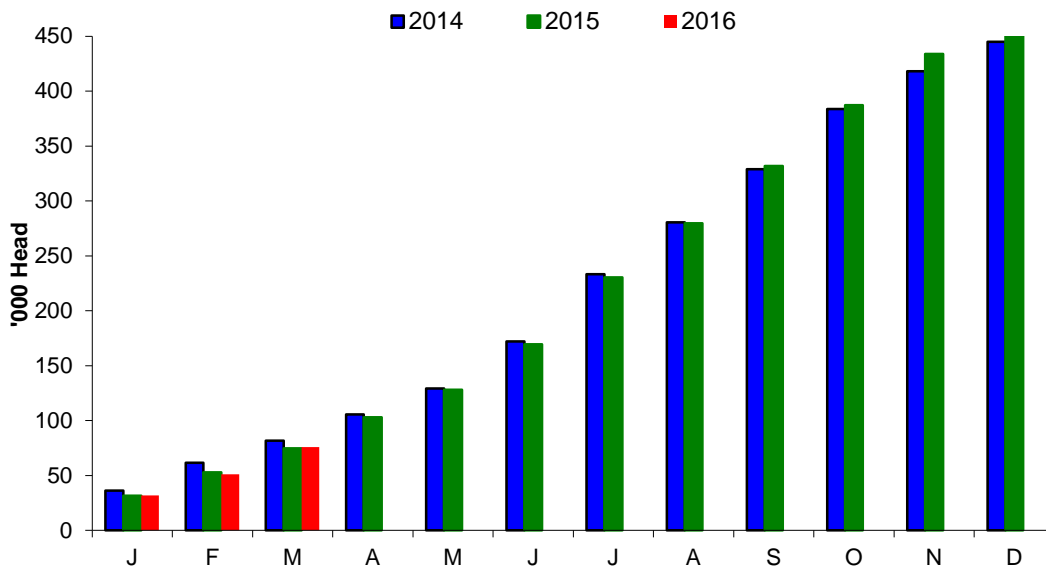
### Sheep Prices

#### Average Deadweight NI Hogget / Lamb Price

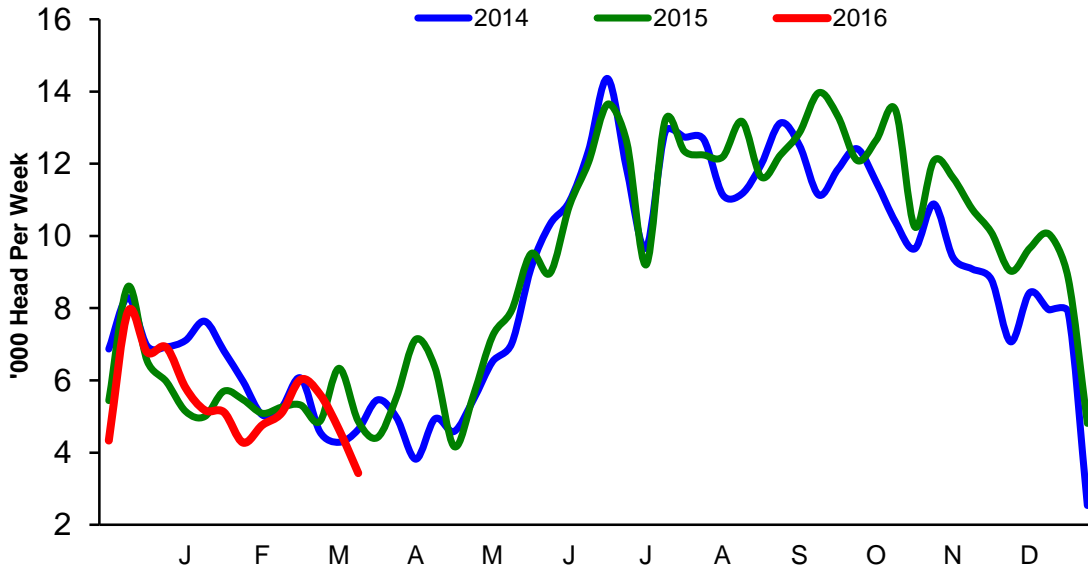


### Sheep Slaughterings

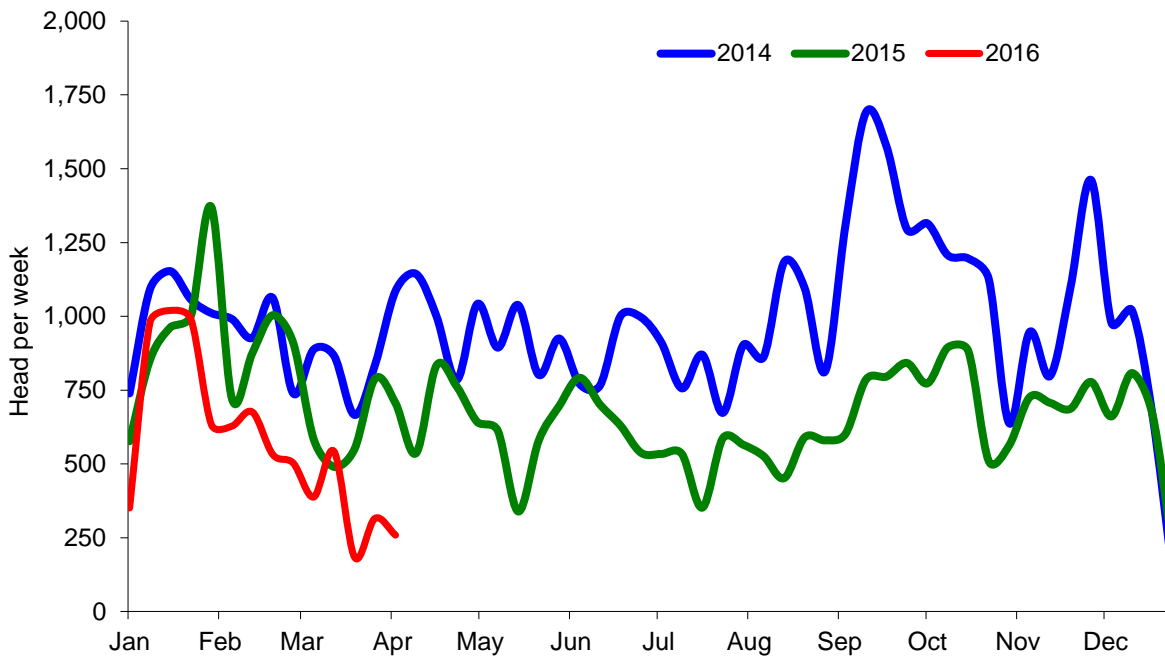
#### Cumulative Lamb & Hogget Slaughterings



### Total Weekly Lamb & Hogget Slaughtering



### Total Weekly Ewe and Ram Slaughtering





**Market Information March 2016**  
**Page 9**

<b>NI CATTLE AND SHEEP SLAUGHTERINGS FOR THE FOODCHAIN</b>						
	<b>March</b>			<b>Year to Date</b>		
	<b>(5 weeks ended 02/04/16)</b>			<b>(14 weeks ended 02/04/16)</b>		
	<b>Mar-15</b>	<b>Mar-16</b>	<b>% Change</b>	<b>2015</b>	<b>2016</b>	<b>Change</b>
<b>CATTLE</b>						
Steers	14,767	16,218	+10%	45,377	44,062	-3%
Heifers	10,105	11,584	+15%	33,519	32,532	-3%
Young Bulls / Calves	2,409	3,383	+40%	7,364	9,608	+30%
<b>Total Prime Cattle</b>	<b>27,281</b>	<b>31,185</b>	<b>+14%</b>	<b>86,260</b>	<b>86,202</b>	<b>-0%</b>
Calves	465	641	+38%	1,630	1,817	+0%
Cows	5,795	7,570	+31%	20,259	23,290	+15%
Mature Bulls	259	309	+19%	852	876	+3%
<b>Total Cattle</b>	<b>33,800</b>	<b>39,705</b>	<b>+17%</b>	<b>109,001</b>	<b>112,185</b>	<b>+3%</b>
<b>SHEEP</b>						
Lambs & Hoggets	21,775	24,806	+14%	74,719	75,868	+2%
Ewes & Rams	2,414	1,689	-30%	10,690	8,002	-25%
<b>Total Sheep</b>	<b>24,189</b>	<b>26,495</b>	<b>+10%</b>	<b>85,409</b>	<b>83,870</b>	<b>-2%</b>
The above figures are provisional; any amendments will be incorporated in the cumulative data (source DARD).						

<b>NI BEEF AND SHEEPMEAT PRODUCTION - FOODCHAIN</b>						
	<b>March</b>			<b>Year to Date</b>		
	<b>(5 weeks ended 02/04/16)</b>			<b>(14 weeks ended 02/04/16)</b>		
	<b>Mar-15</b>	<b>Mar-16</b>	<b>% Change</b>	<b>2015</b>	<b>2016</b>	<b>Change</b>
<b>BEEF</b>						
Steers	5,197	5,822	+12%	15,887	15,798	-1%
Heifers	3,206	3,753	+17%	10,650	10,531	-1%
Young Bulls	796	1,130	+42%	2,410	3,206	+33%
<b>Total Prime Beef</b>	<b>9,199</b>	<b>10,704</b>	<b>+16%</b>	<b>19,748</b>	<b>29,534</b>	<b>+50%</b>
Calves	97	133	+38%	323	375	+16%
Cows	3,732	2,329	-38%	6,162	7,176	+16%
Mature Bulls	236	137	-42%	375	396	+6%
<b>Total Beef</b>	<b>13,263</b>	<b>13,304</b>	<b>+0%</b>	<b>26,608</b>	<b>37,481</b>	<b>+41%</b>
<b>SHEEPMEAT</b>						
Lambs & Hoggets	957	551	-42%	1,669	1,669	-0%
Ewes & Rams	157	47	-70%	285	215	-25%
<b>Total Sheepmeat</b>	<b>1,115</b>	<b>597</b>	<b>-46%</b>	<b>1,954</b>	<b>1,883</b>	<b>-4%</b>
The above figures are provisional; any amendments will be incorporated in the cumulative data (source DARD).						

**Market Information March 2016**  
**Page 10**

**Total Carcase Weight Produced for the Food Chain**  
**Year-to-Date (tonnes – t.)**

Month	Prime Cattle		Cows & Bulls		Lambs/Hoggets		Ewes & Rams	
	2015	2016	2015	2016	2015	2016	2015	2016
January	10,829	9,924	2,569	2,772	712	675	127	107
February	8,919	8,906	2,085	2,334	476	422	92	61
March	9,199	10,704	1,882	2,466	482	551	66	47
April								
May								
June								
July								
August								
September								
October								
November								
December								
<b>Total</b>	<b>28,947</b>	<b>29,534</b>	<b>6,537</b>	<b>7,572</b>	<b>1,669</b>	<b>1,648</b>	<b>285</b>	<b>215</b>
<b>Change (t.)</b>	<b>588</b>		<b>1,035</b>		<b>-21</b>		<b>-70</b>	
<b>% Change</b>	<b>2.03%</b>		<b>15.83%</b>		<b>-1.26%</b>		<b>-24.63%</b>	

\*excludes calves

**Change in Throughput / Production**  
**Last 4 weeks 2015/2016**

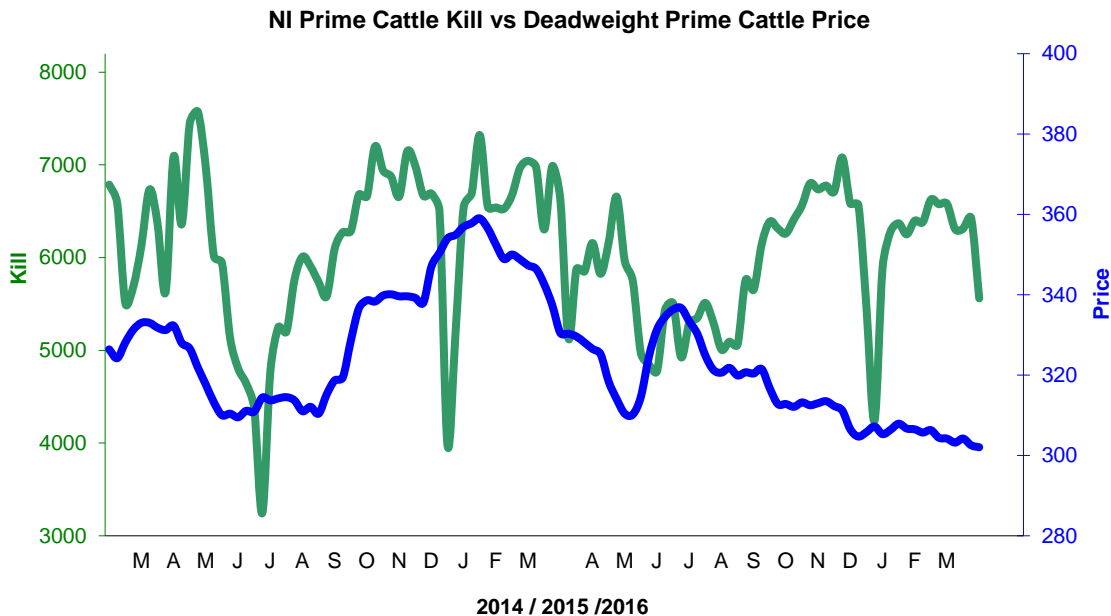
**Change in Throughput / Production 2015/2016**

**March**

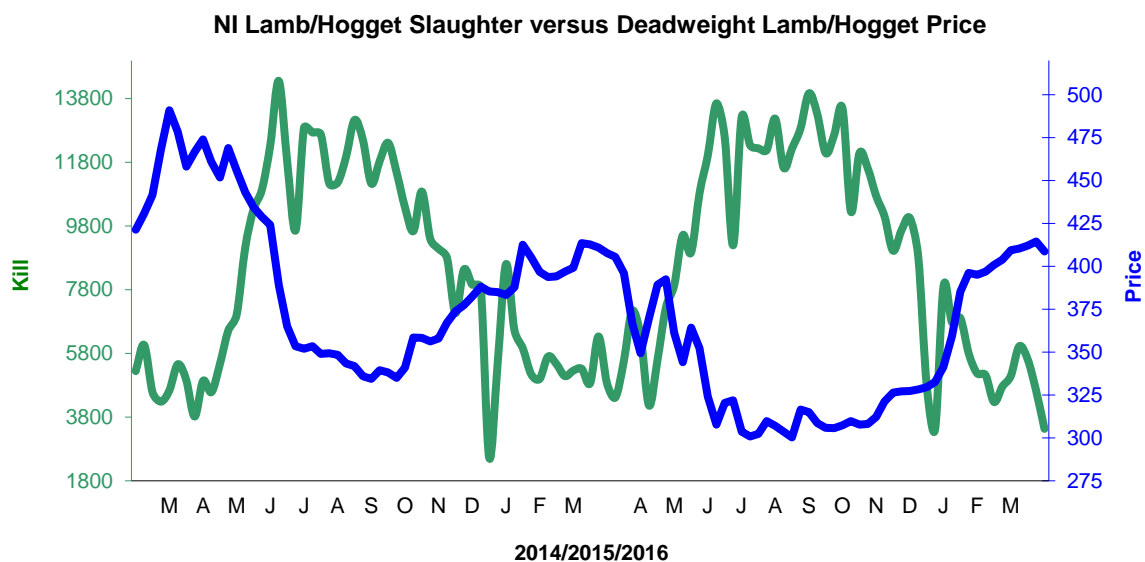
2015/2016	Number	Tonnage	ACW Kg
Prime	14.3%	16.4%	6.11
Cows	30.6%	31.6%	1.74
<b>Total</b>	<b>17.5%</b>	<b>19.0%</b>	<b>4.35</b>
Lamb	13.9%	14.3%	0.06
Ewes and Rams	-30.0%	-29.1%	0.78
<b>Total Sheep</b>	<b>9.5%</b>	<b>9.1%</b>	<b>-0.08</b>

Supply and Price

NI Clean Cattle Kill vs. Average Clean Cattle Price



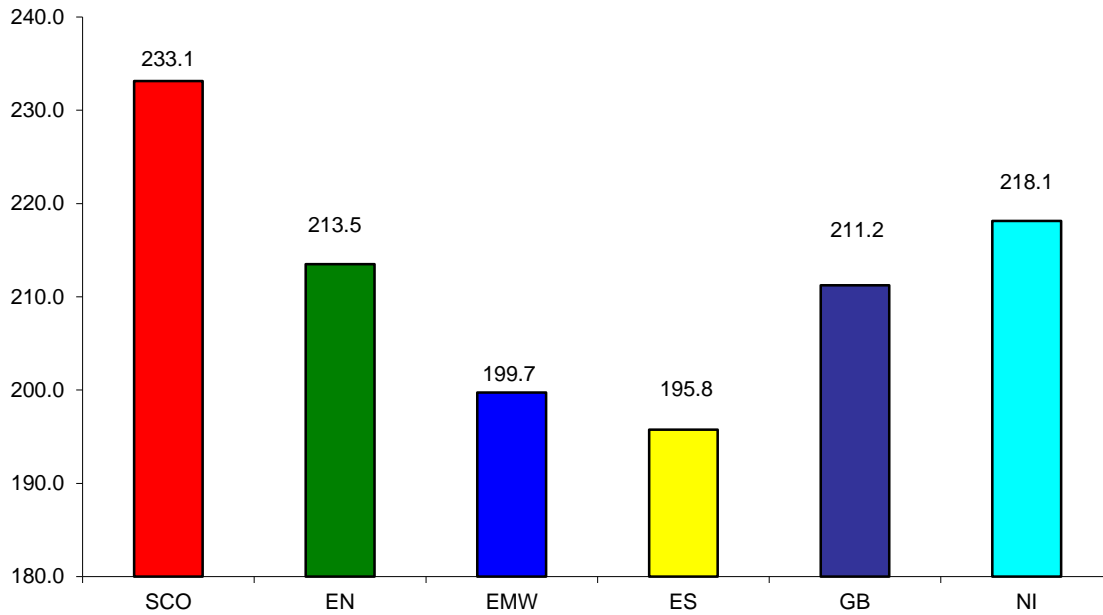
NI Lamb/Hogget Kill vs. Average Lamb / Hogget Price



Green	Supply (Kill)
Blue	Price

BRITISH ISLES COMPARISONS

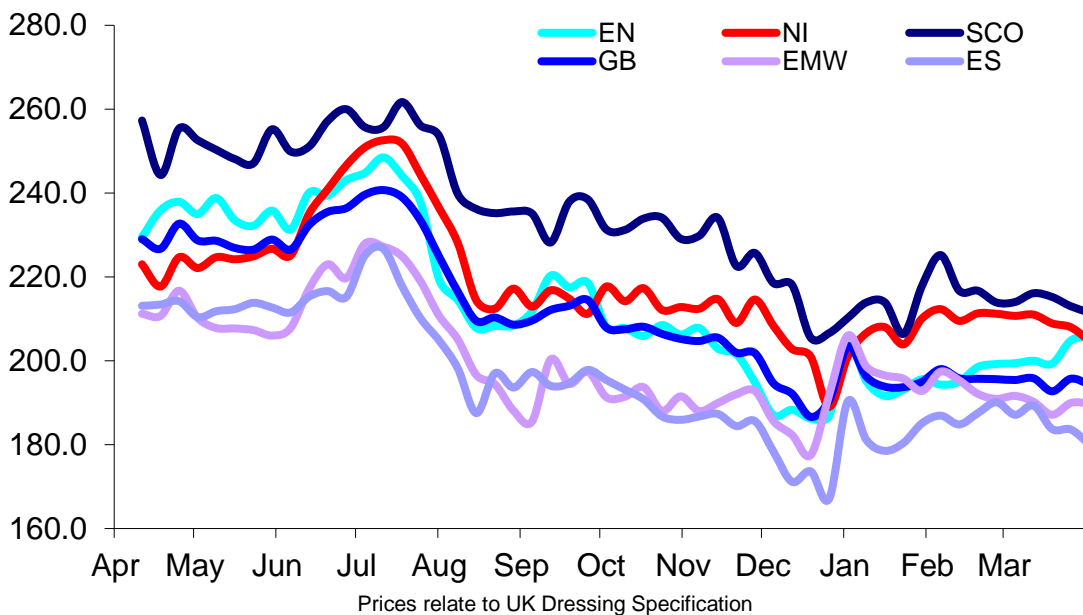
UK Average Cow Prices  
53 Weeks to 02 April 2016



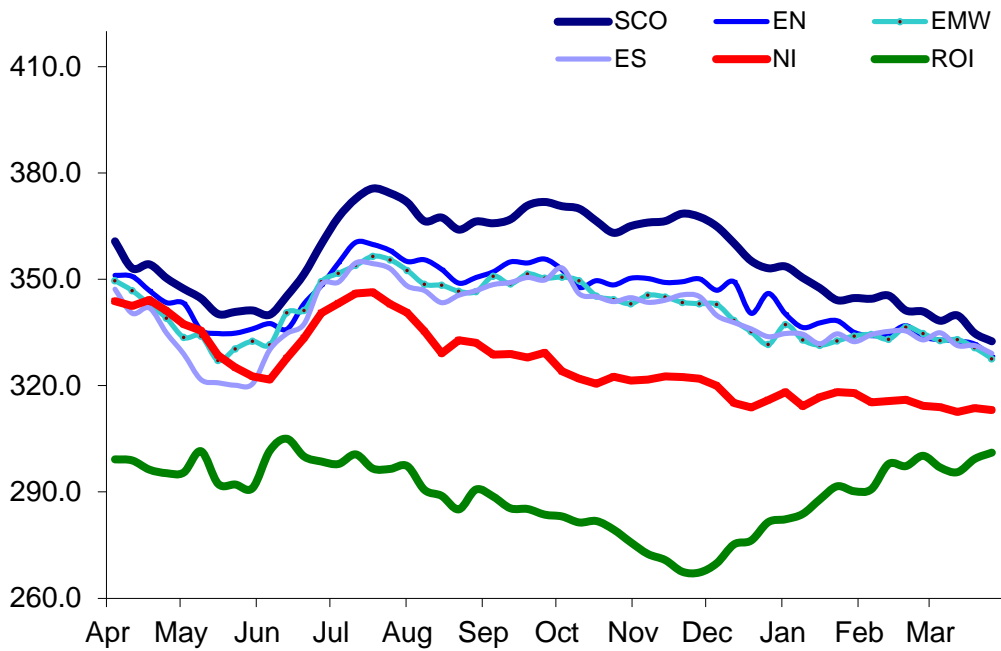
SCO	Scotland
EN	England North
EMW	England Midlands and Wales
ES	England South
NI	Northern Ireland
GB	Great Britain

Prices relate to UK Dressing Specification

Weekly UK Cow Prices  
53 Weeks to 02 April 2016

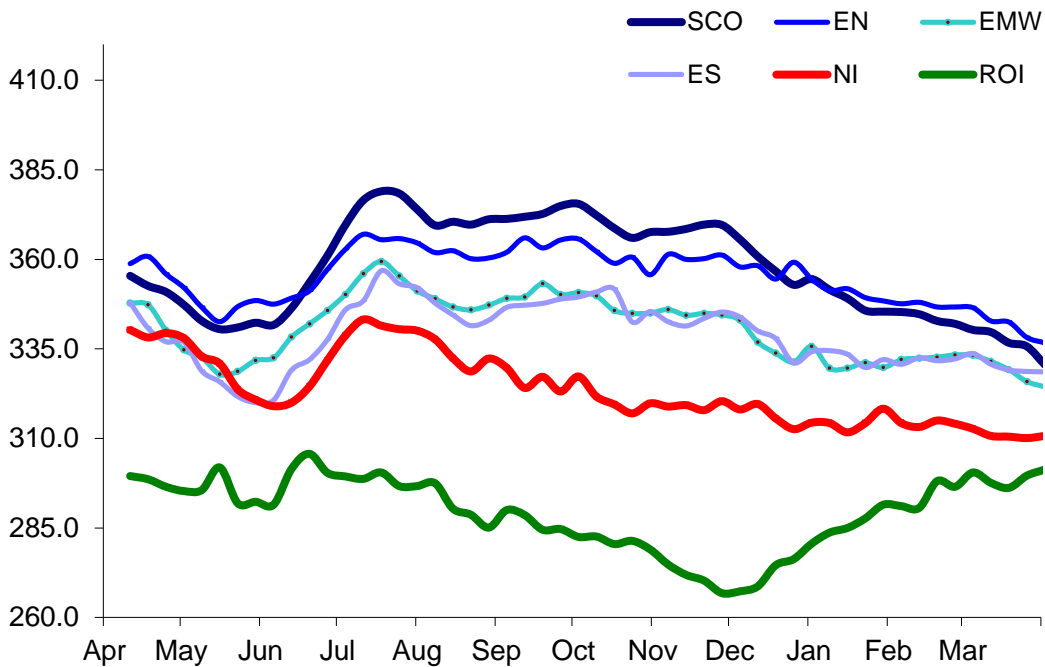


British Isles R3 Steer Price  
53 Weeks to 02 April 2016



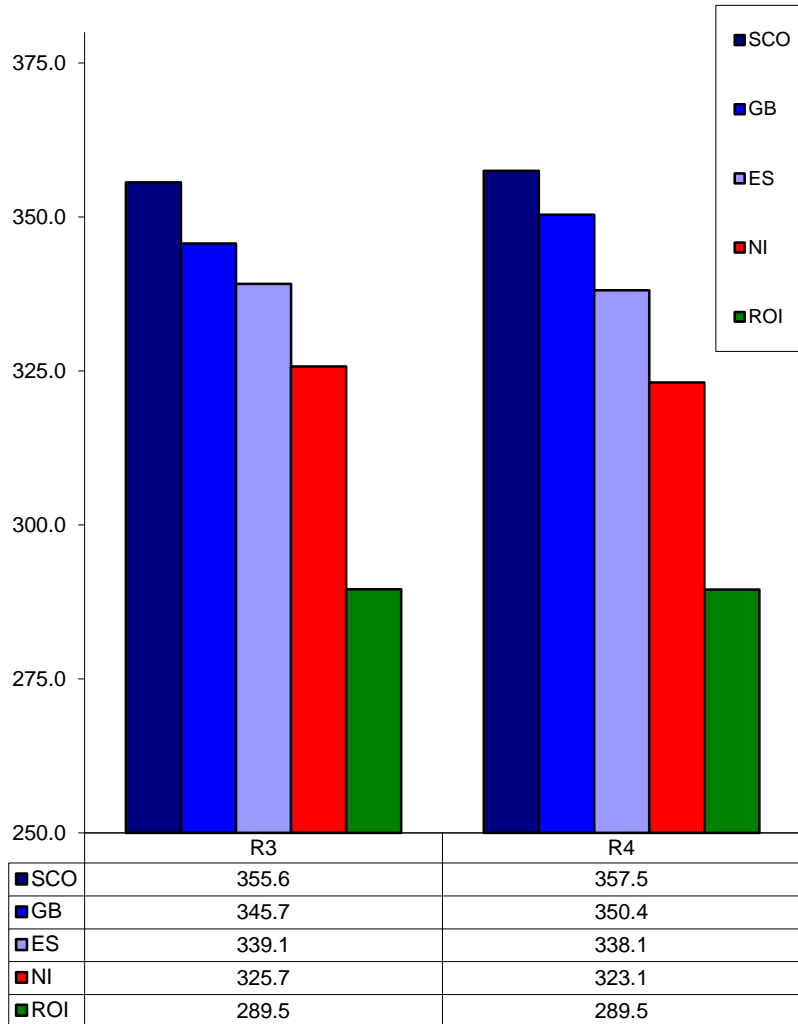
Prices relate to UK Dressing Specification

British Isles R4 Steer Price  
53 Weeks to 02 April 2016



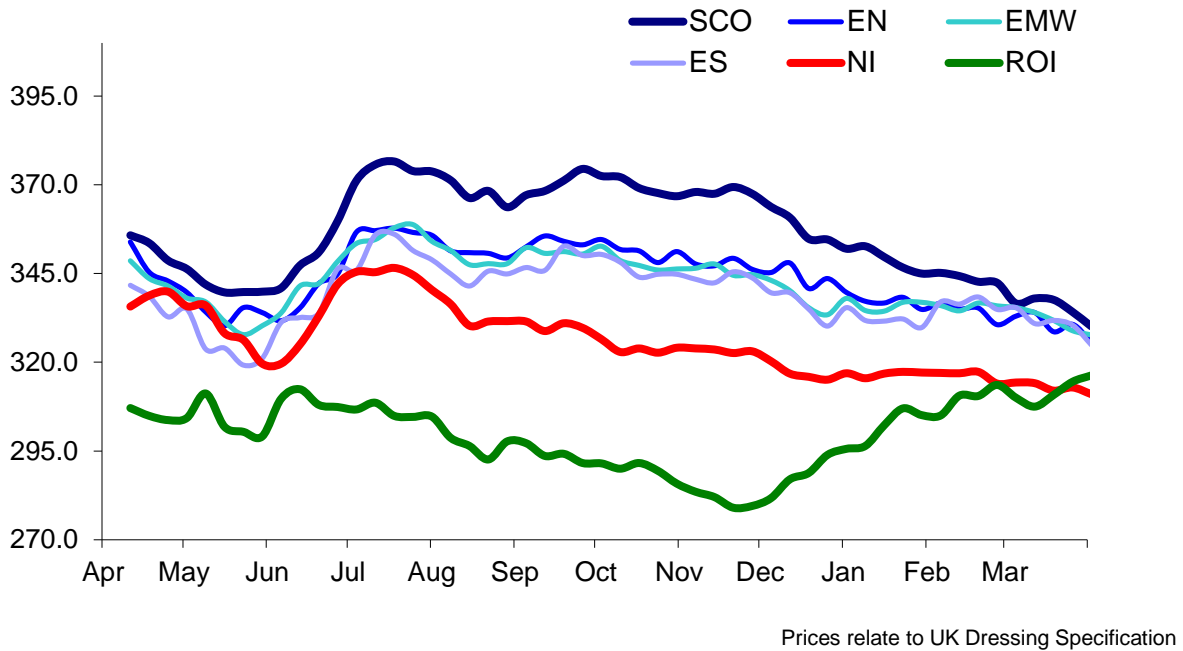
Prices relate to UK Dressing Specification

**British Isles Average R3 and R4 Steer price**  
**53 Weeks to 02 April 2016**

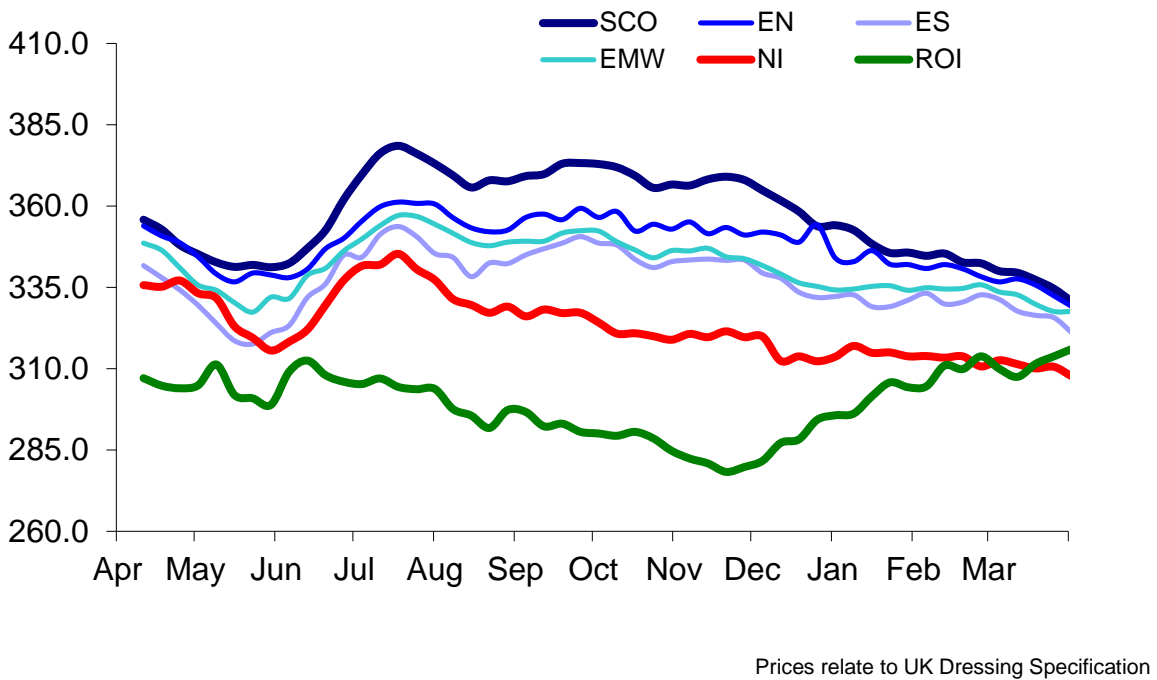


Prices relate to UK Dressing Specification

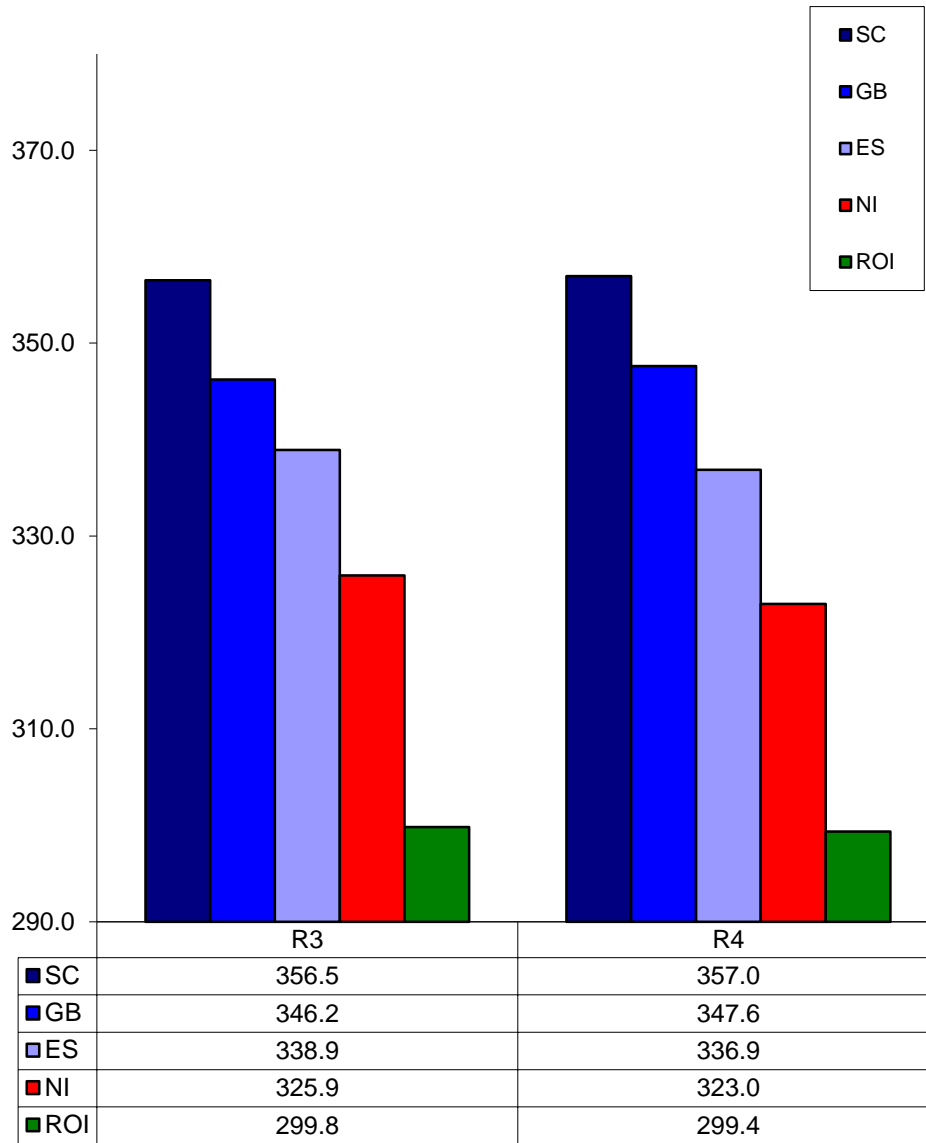
British Isles R3 Heifer Price  
53 Weeks to 02 April 2016



British Isles R4 Heifer Price  
53 Weeks to 02 April 2016



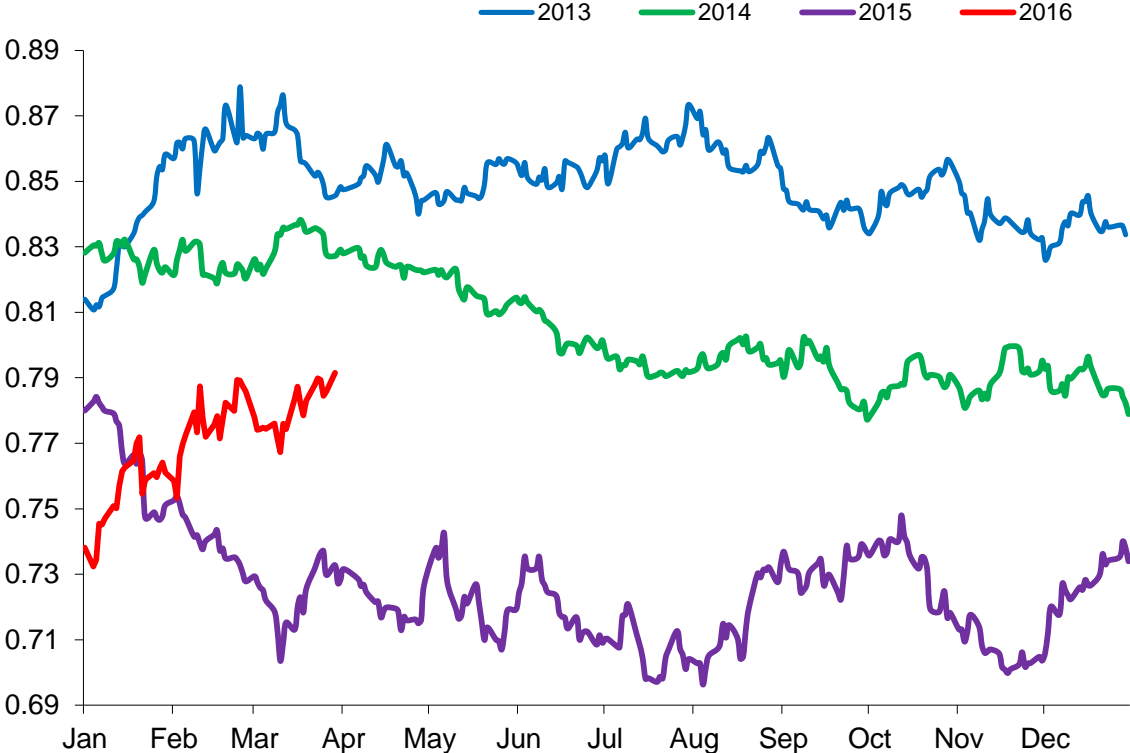
**British Isles Average R3 and R4 Heifer price**  
**53 Weeks to 02 April 2016**



Prices relate to UK Dressing Specification

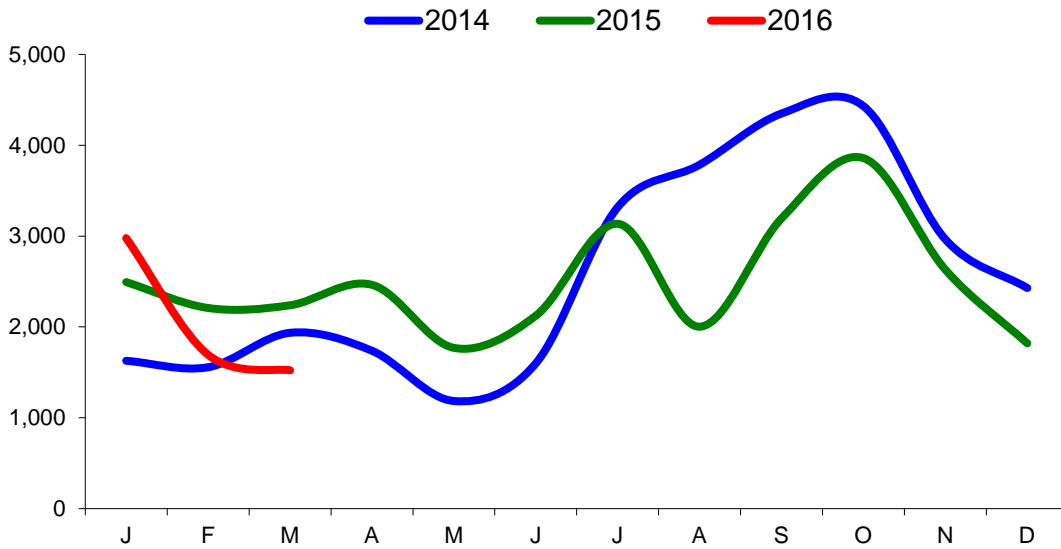


Exchange Rate £ / Euro  
01 March 2013 – 31 March 2016

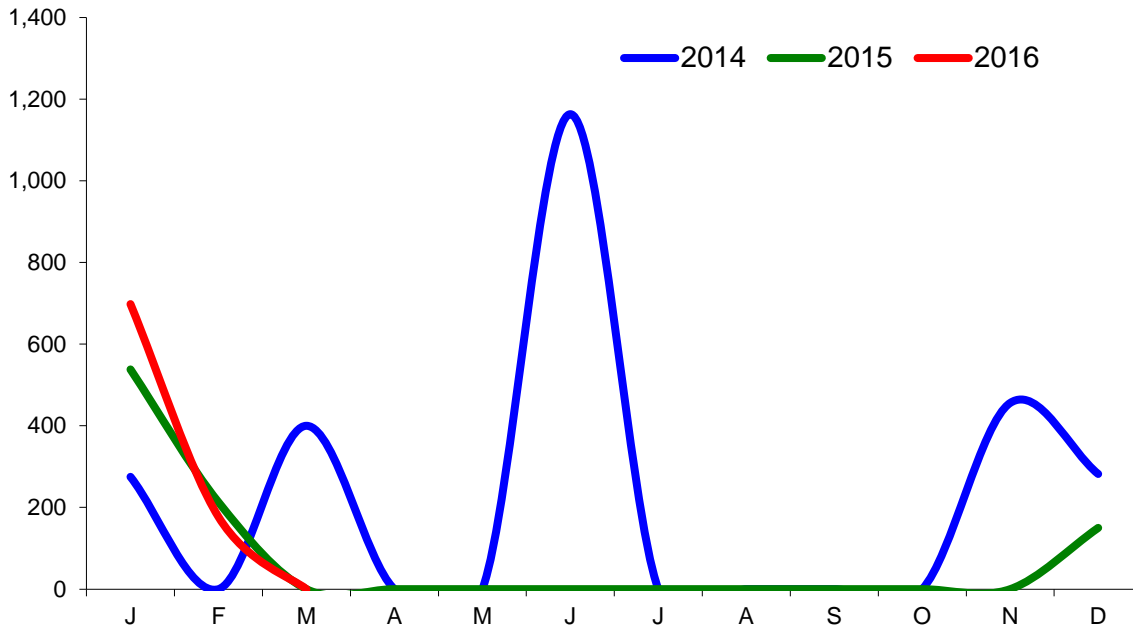


### Imports

#### Monthly Live Imports of Cattle into NI for Direct Slaughter From ROI and GB Combined

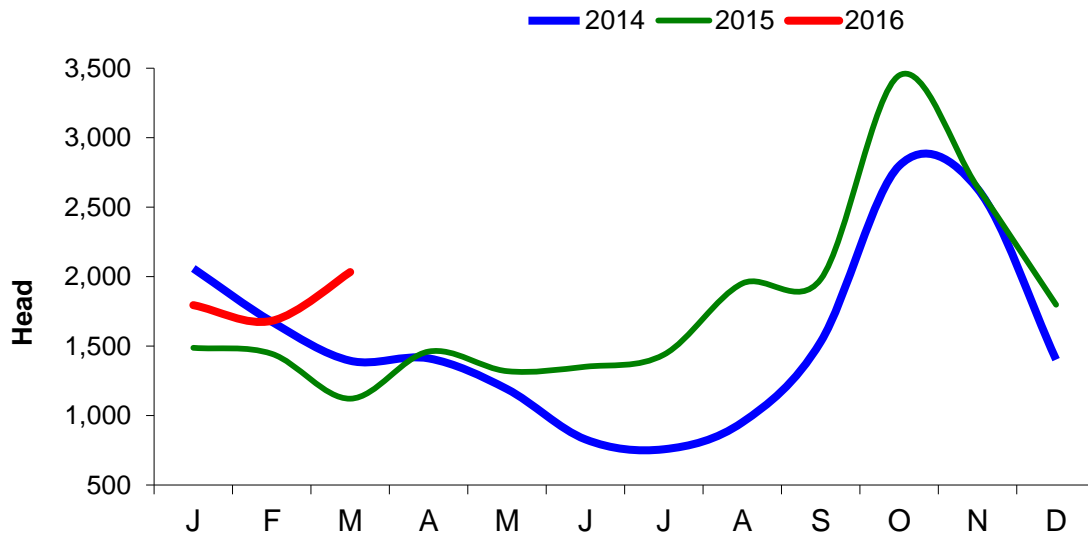


#### Monthly Live Imports of Sheep into NI for Direct Slaughter From ROI and GB Combined



Exports

Monthly Live Exports of Cattle from NI into ROI and GB



Monthly Live Exports of Sheep from NI into ROI and GB

