

LMC

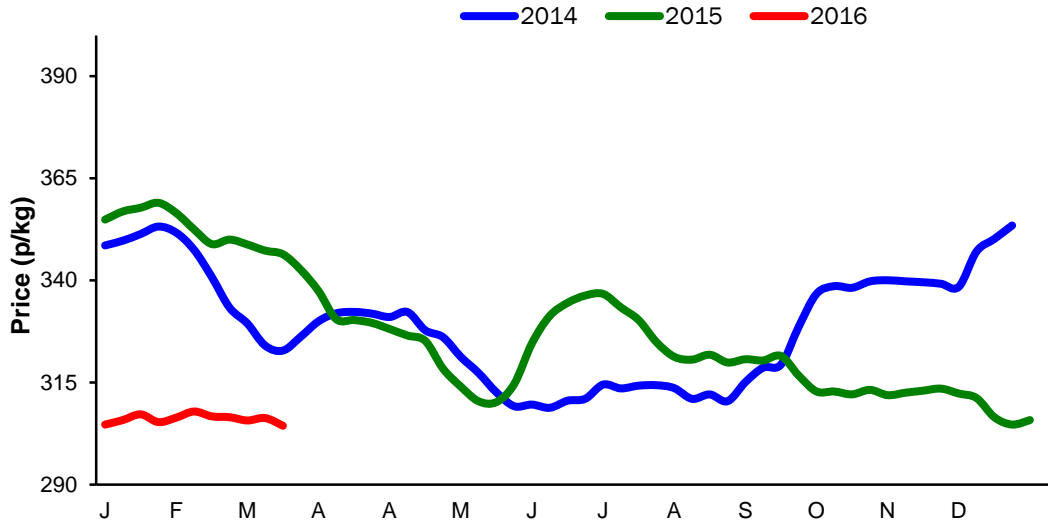
**Monthly Economic Review
February 2016**

Contents

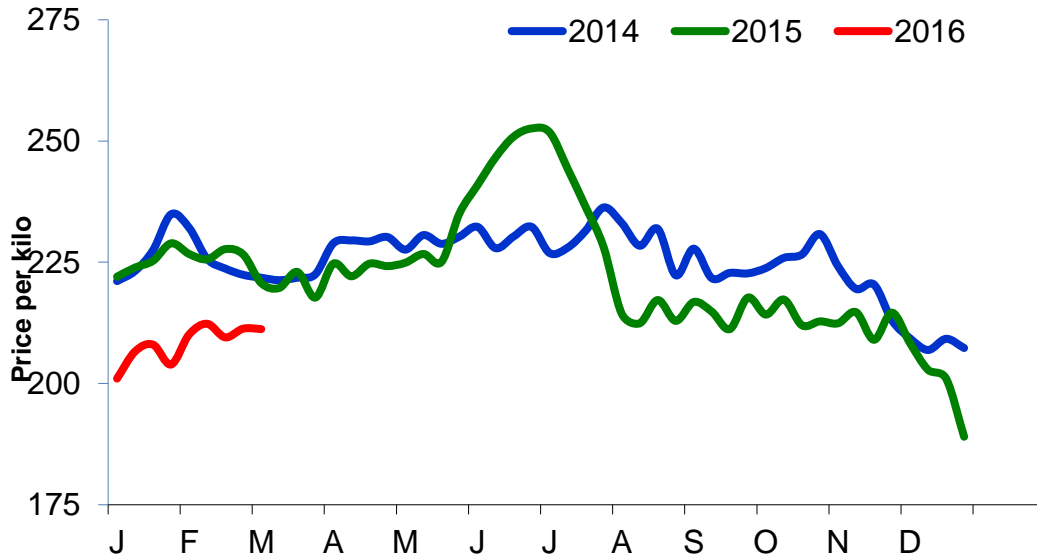
Contents	3
Cattle Prices.....	4
Average NI Clean Cattle Price.....	4
Average NI Cow Price	4
Cattle Slaughtering.....	5
NI Clean Cattle Slaughtering – Cumulative	5
NI Weekly Clean Cattle Slaughtering	5
NI Weekly Cow Slaughtering.....	5
Sheep Prices.....	6
Average NI Lamb / Hogget Price	6
Sheep Slaughtering.....	7
Cumulative Lamb & Hogget Slaughtering.....	7
Total Weekly Lamb & Hogget Slaughtering.....	7
Total Weekly Ewe and Ram Slaughtering	7
Total Carcase Weight Produced for the Food Chain.....	8
Change in Throughput / Production	9
Supply and Price.....	10
NI Lamb/Hogget Kill vs. Average Lamb / Hogget Price	10
NI Clean Cattle Kill vs. Average Clean Cattle Price.....	10
British Isles Price Comparisons	11
UK Average Cow Prices	11
Weekly UK Cow Prices	11
British Isles R3 Steer Price	12
British Isles R4 Steer Price	12
British Isles Average R3 and R4 Steer price	13
British Isles R3 Heifer Price	14
British Isles R4 Heifer Price	14
British Isles Average R3 and R4 Heifer price	15
Exchange Rate £ / Euro.....	17
Imports.....	18
Monthly Live Imports of Cattle into NI for Direct Slaughter.....	18
Monthly Live Imports of Sheep into NI for Direct Slaughter.....	18
Exports.....	19
Monthly Live Exports of Cattle from NI into Rol and GB.....	19
Monthly live Exports of Sheep from NI into Rol and GB.....	19

Cattle Prices

Average NI Clean Cattle Price

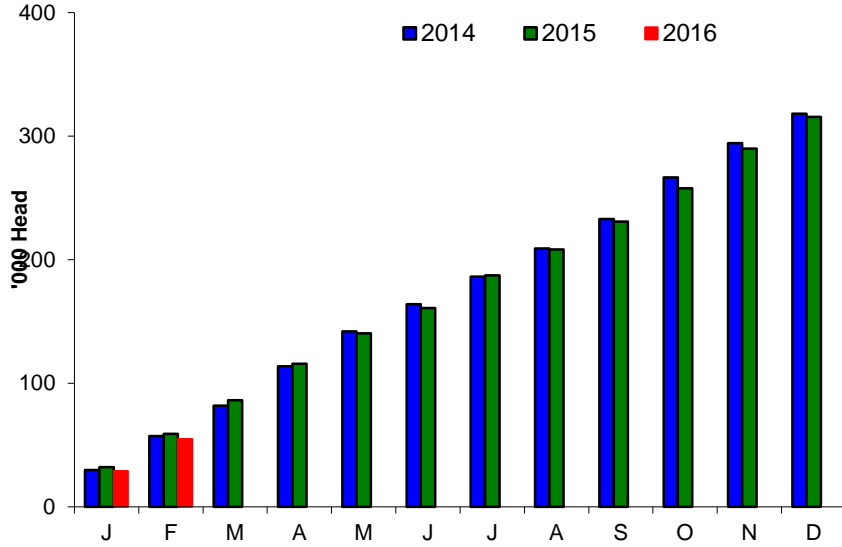


Average NI Cow Price

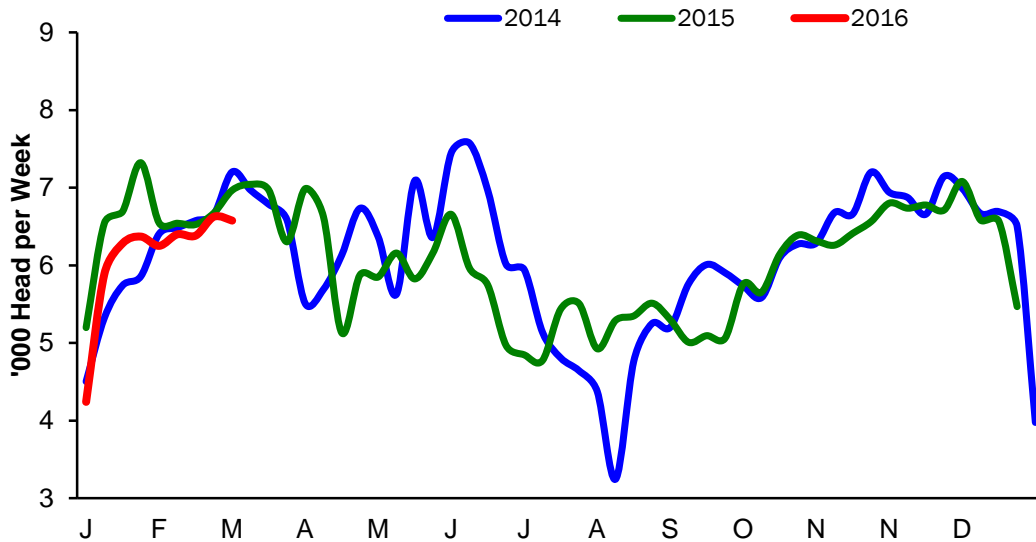


Cattle Slaughtering

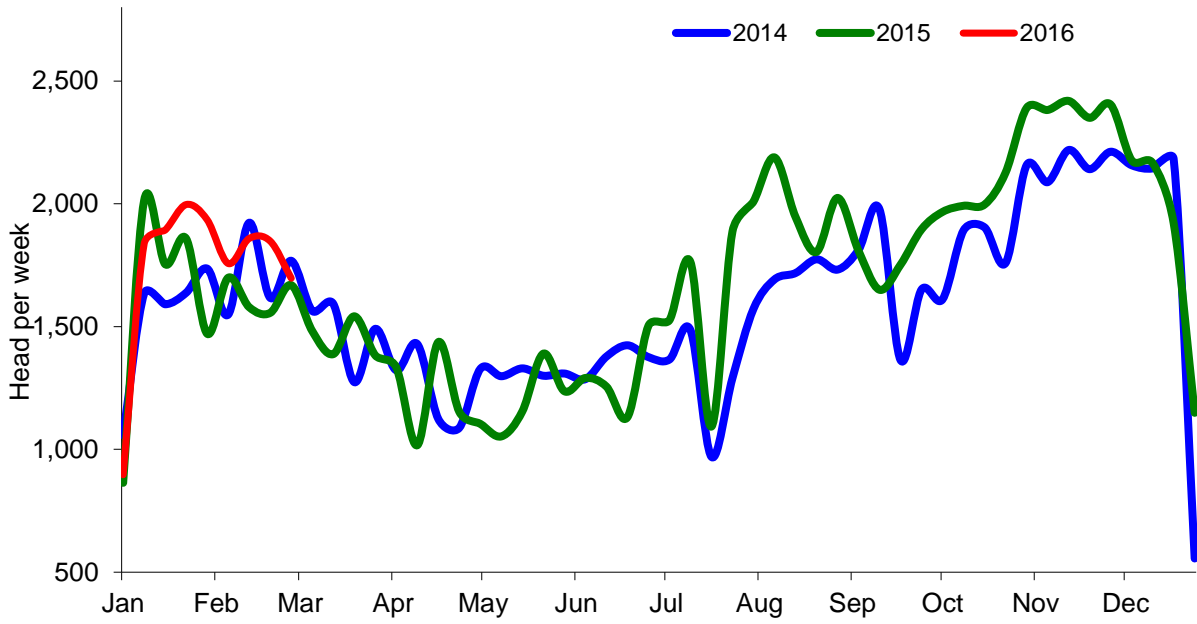
NI Clean Cattle Slaughtering – Cumulative



NI Weekly Clean Cattle Slaughtering

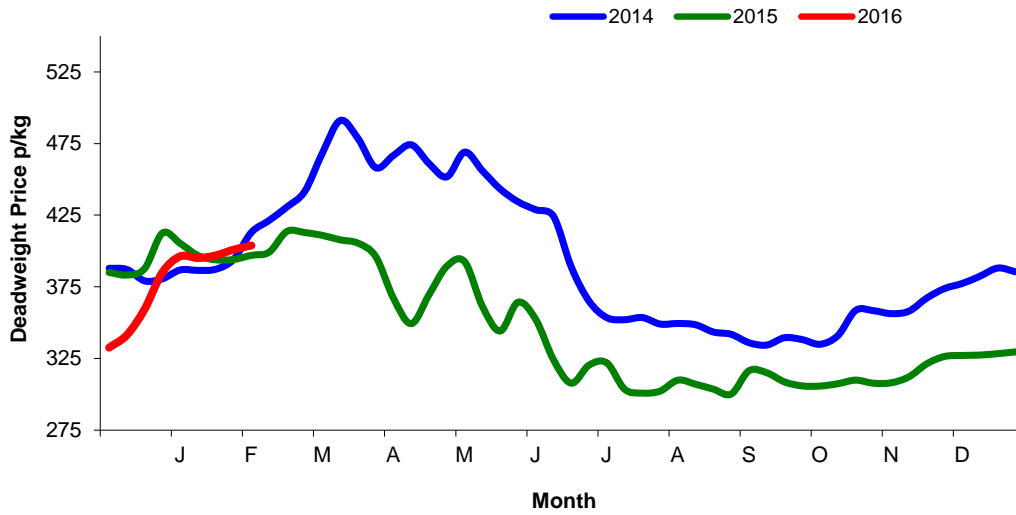


NI Weekly Cow Slaughtering



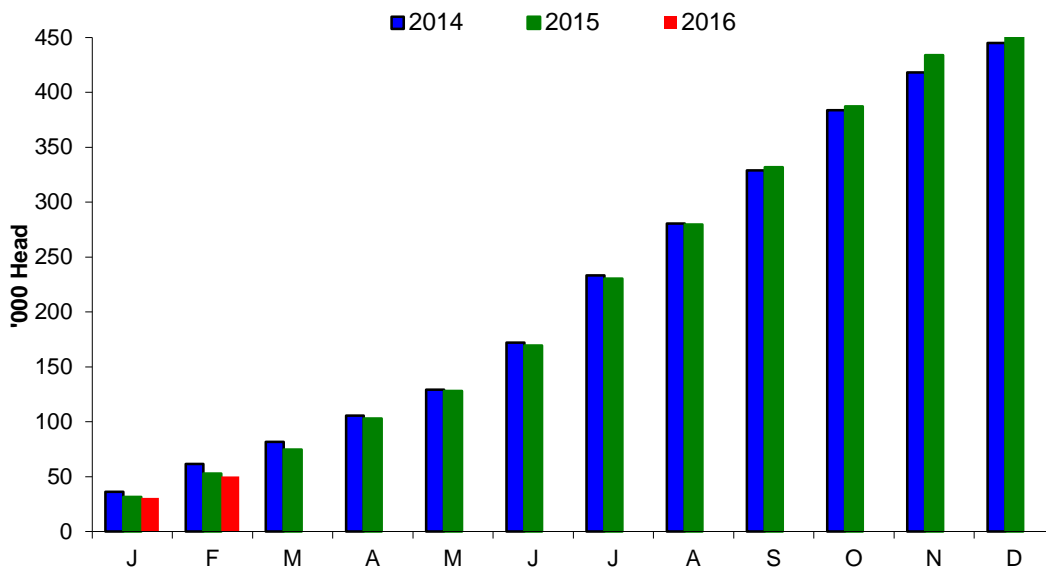
Sheep Prices

Average Deadweight NI Hogget / Lamb Price

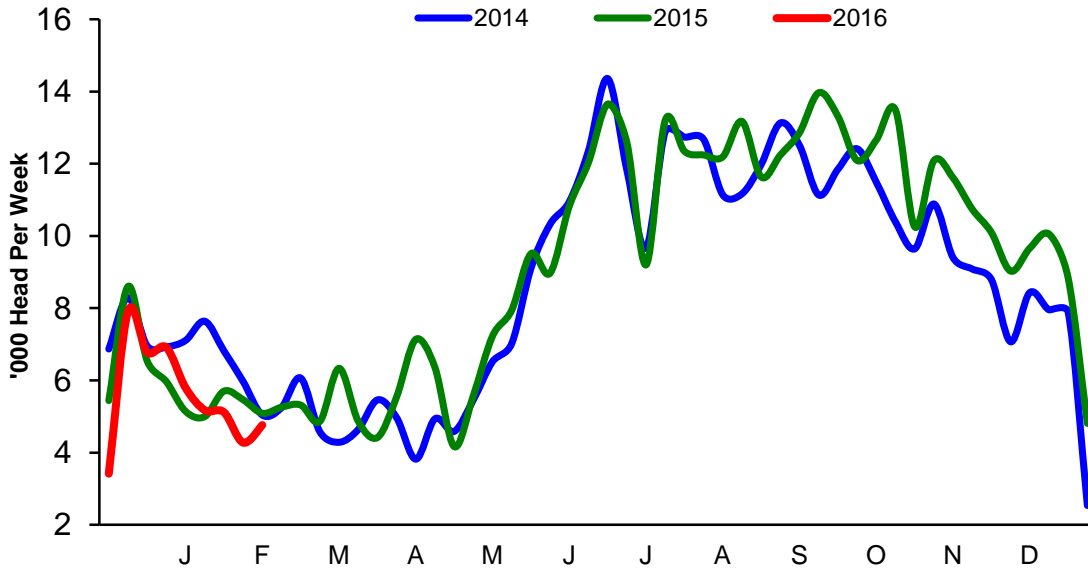


Sheep Slaughterings

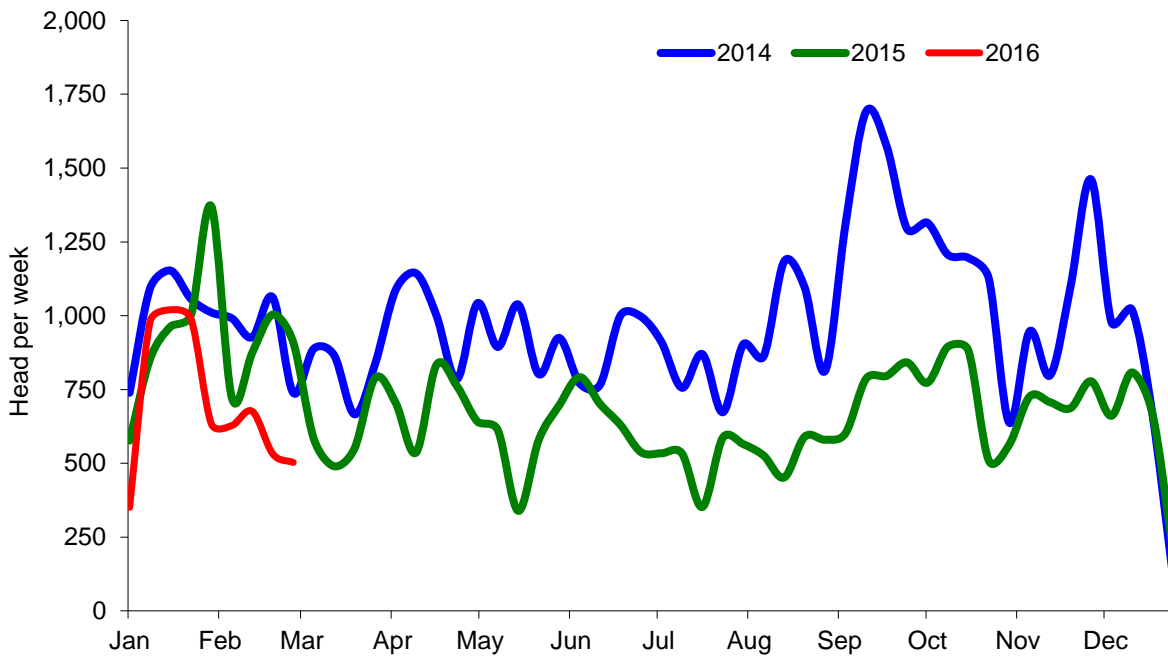
Cumulative Lamb & Hogget Slaughterings



Total Weekly Lamb & Hogget Slaughtering



Total Weekly Ewe and Ram Slaughtering



Market Information February 2016
Page 9

NI CATTLE AND SHEEP SLAUGHTERINGS FOR THE FOODCHAIN						
	February			Year to Date		
	(4 weeks ended 27/02/16)			(9 weeks ended 27/02/16)		
	Feb-15	Feb-16	% Change	2015	2016	Change
CATTLE						
Steers	13,949	13,422	-4%	30,610	27,844	-9%
Heifers	10,501	9,649	-8%	23,414	20,948	-11%
Young Bulls / Calves	2,227	2,913	+31%	4,955	6,225	+26%
Total Prime Cattle	26,677	25,984	-3%	58,979	55,017	-7%
Calves	529	536	+1%	1,165	1,176	+0%
Cows	6,503	7,161	+10%	14,464	15,720	+9%
Mature Bulls	274	281	+3%	593	567	-4%
Total Cattle	33,983	33,962	-0%	75,201	72,480	-4%
SHEEP						
Lambs & Hoggets	21,255	19,332	-9%	52,944	50,145	-5%
Ewes & Rams	3,511	2,339	-33%	8,276	6,313	-24%
Total Sheep	24,766	21,671	-12%	61,220	56,458	-8%
The above figures are provisional; any amendments will be incorporated in the cumulative data (source DARD).						

NI BEEF AND SHEEPMEAT PRODUCTION - FOODCHAIN						
	February			Year to Date		
	(4 weeks ended 27/02/16)			(9 weeks ended 27/02/16)		
	Feb-15	Feb-16	% Change	2015	2016	Change
BEEF						
Steers	4,878	4,817	-1%	10,690	9,976	-7%
Heifers	3,317	3,119	-6%	7,444	6,778	-9%
Young Bulls	725	970	+34%	1,614	2,076	+29%
Total Prime Beef	8,919	8,906	-0%	19,748	18,830	-5%
Calves	99	109	+11%	227	241	+6%
Cows	1,962	2,208	+13%	4,392	4,847	+10%
Mature Bulls	123	126	+2%	263	259	-1%
Total Beef	11,104	11,349	+2%	24,630	24,176	-2%
SHEEPMEAT						
Lambs & Hoggets	476	422	-11%	1,187	1,097	-8%
Ewes & Rams	92	61	-33%	219	168	-23%
Total Sheepmeat	567	483	-15%	1,406	1,265	-10%
The above figures are provisional; any amendments will be incorporated in the cumulative data (source DARD).						

Market Information February 2016
Page 10

Total Carcase Weight Produced for the Food Chain
Year-to-Date (tonnes – t.)

Month	Prime Cattle		Cows & Bulls		Lambs/Hoggets		Ewes & Rams	
	2014	2015	2014	2015	2014	2015	2014	2015
January	10,829	9,924	2,569	2,772	712	675	127	107
February	8,919	8,906	2,085	2,334	476	422	92	61
March								
April								
May								
June								
July								
August								
September								
October								
November								
December								
Total	19,748	18,830	4,655	5,106	1,187	1,097	219	168
Change (t.)	-918		451		-90		-51	
% Change	-4.65%		9.68%		-7.58%		-23.28%	

**excludes calves*

Change in Throughput / Production
Last 4 weeks 2015/2016

Change in Throughput / Production 2015/2016

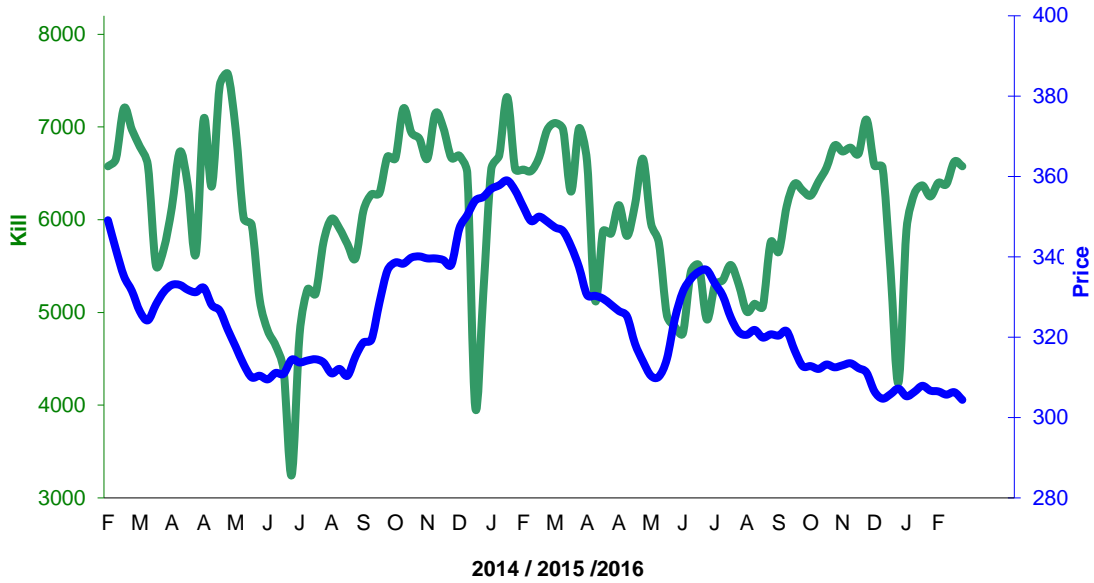
FEBRUARY

2014/2015	Number	Tonnage	ACW Kg
Prime	-2.6%	-0.1%	8.37
Cows	10.1%	12.6%	6.64
Total	-0.1%	2.2%	7.47
Lamb	-9.0%	-11.2%	-0.54
Ewes and Rams	-33.4%	-33.2%	0.10
Total Sheep	-12.5%	-14.8%	-0.59

Supply and Price

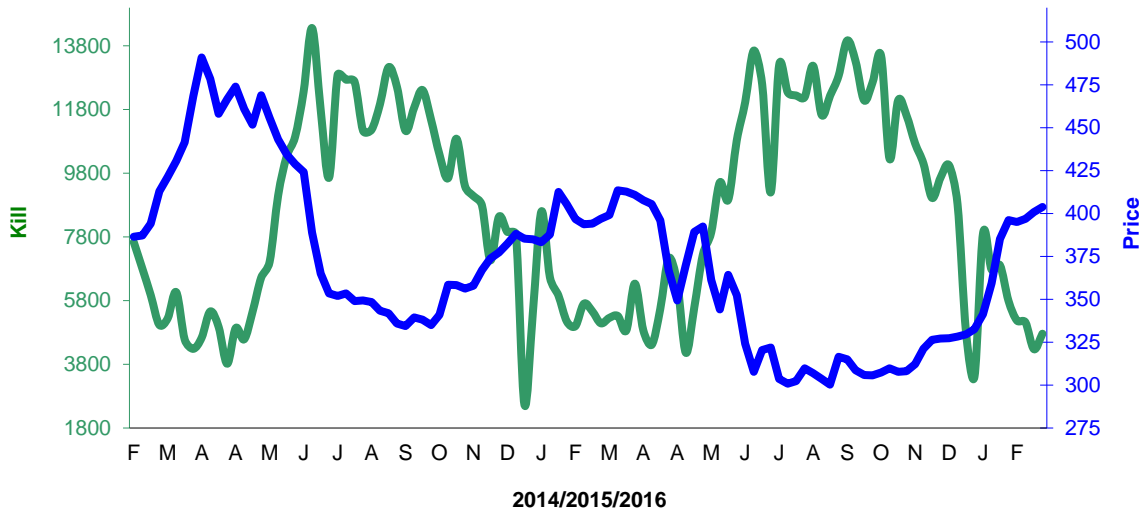
NI Clean Cattle Kill vs. Average Clean Cattle Price

NI Prime Cattle Kill vs Deadweight Prime Cattle Price



NI Lamb/Hogget Kill vs. Average Lamb / Hogget Price

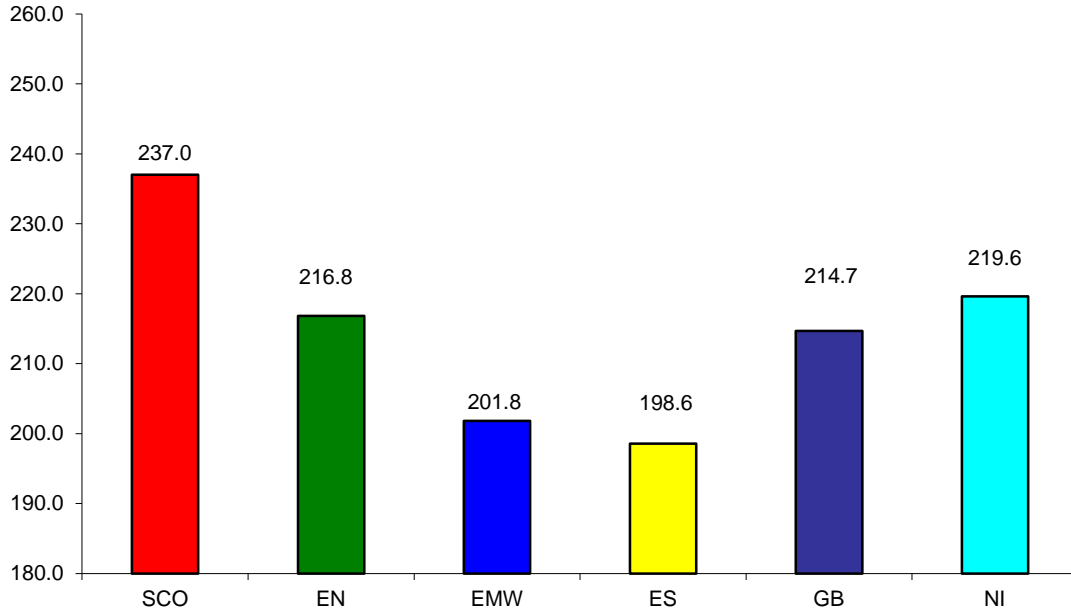
NI Lamb/Hogget Slaughter versus Deadweight Lamb/Hogget Price



Green	Supply (Kill)
Blue	Price

BRITISH ISLES COMPARISONS

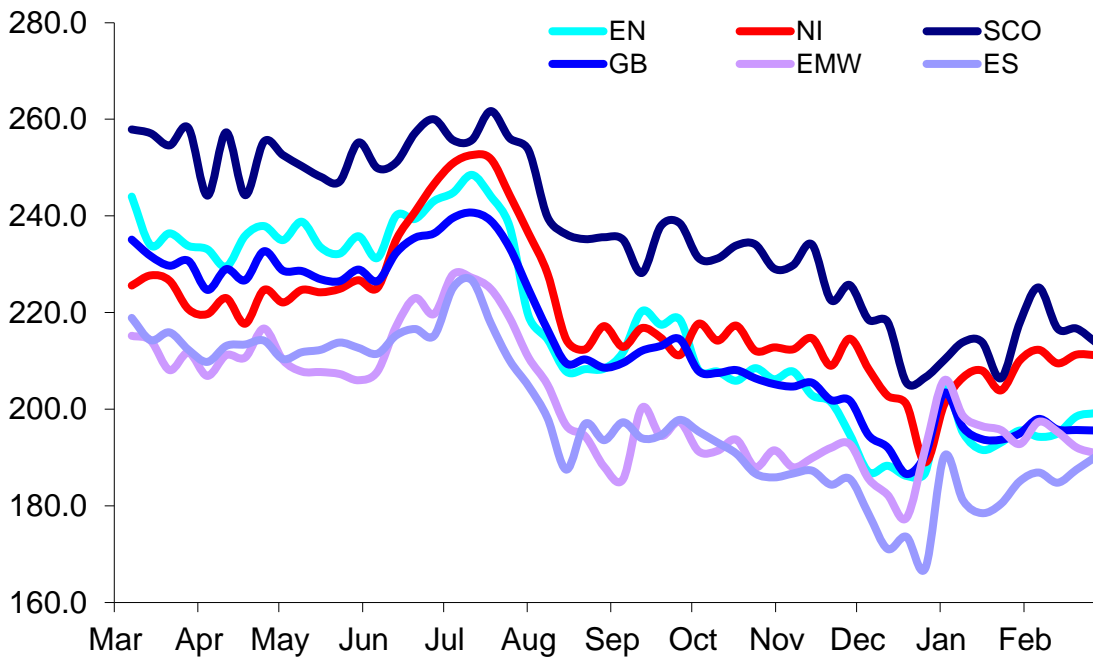
UK Average Cow Prices
52 Weeks to 27 February 2016



SCO	Scotland
EN	England North
EMW	England Midlands and Wales
ES	England South
NI	Northern Ireland
GB	Great Britain

Prices relate to UK Dressing Specification

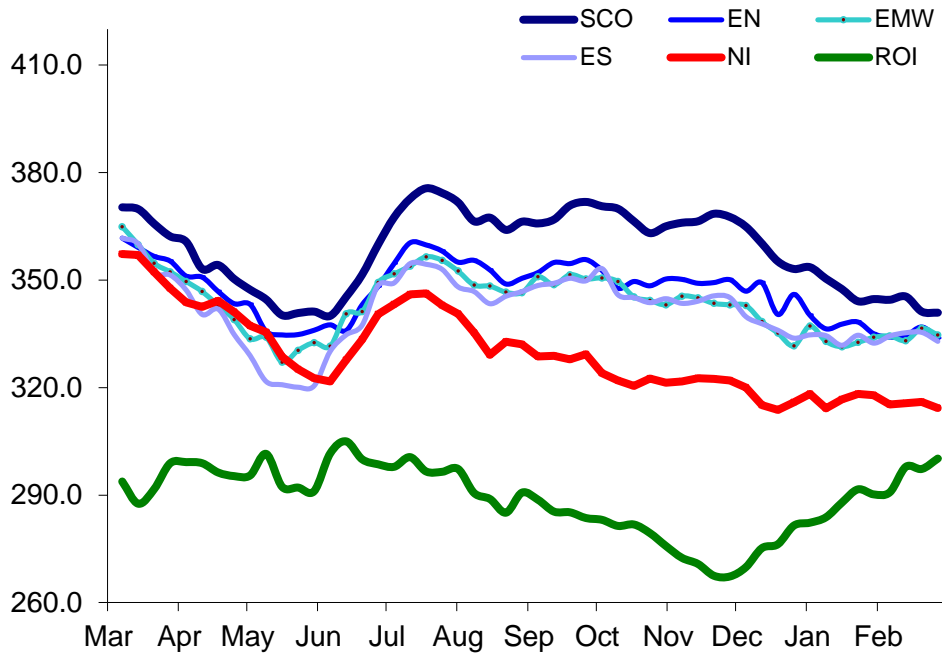
Weekly UK Cow Prices
52 Weeks to 27 February 2016



Market Information February 2016
Page 13

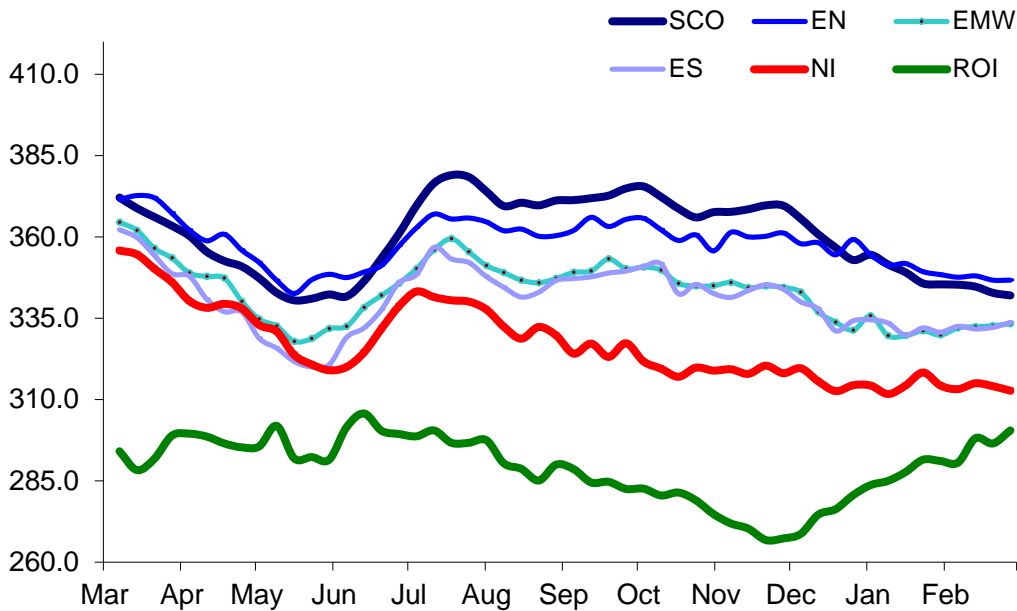
Prices relate to UK Dressing Specification

British Isles R3 Steer Price
52 Weeks to 27 February 2016



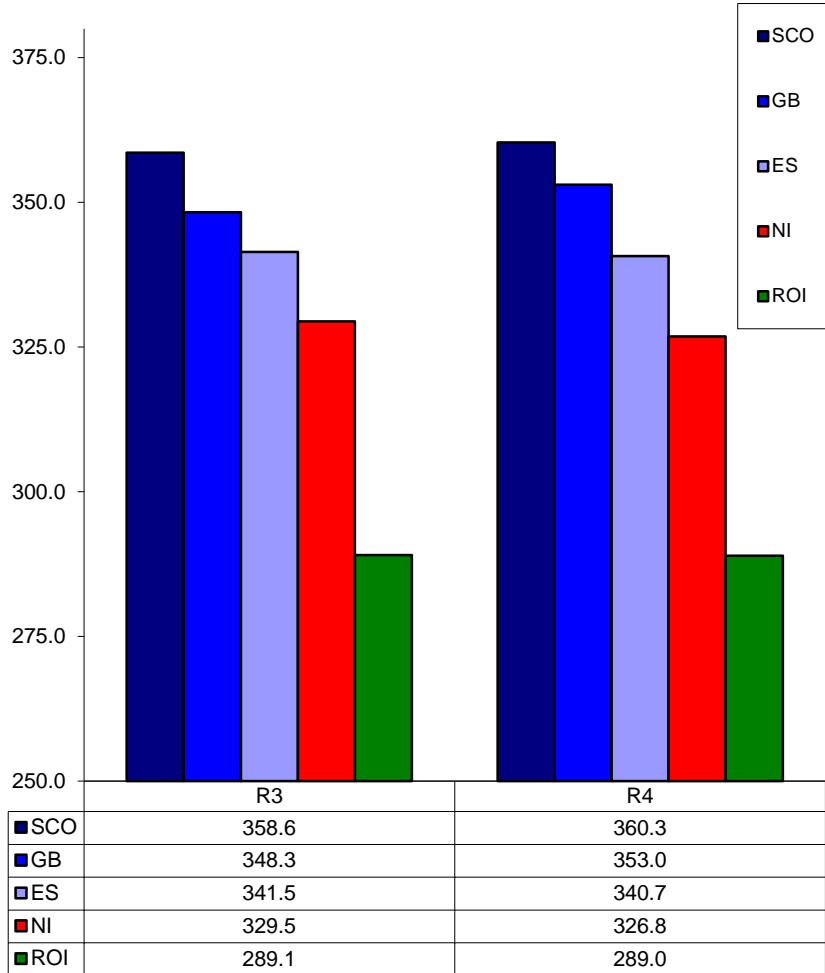
Prices relate to UK Dressing Specification

British Isles R4 Steer Price
52 Weeks to 27 February 2016



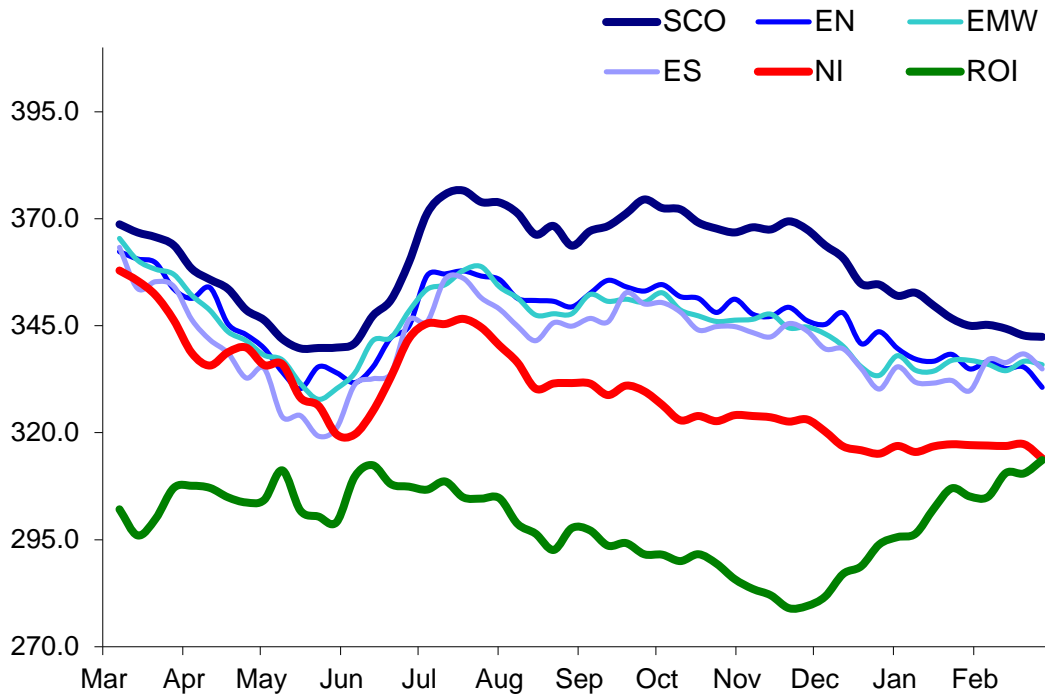
Prices relate to UK Dressing Specification

British Isles Average R3 and R4 Steer price
52 Weeks to 27 February 2016



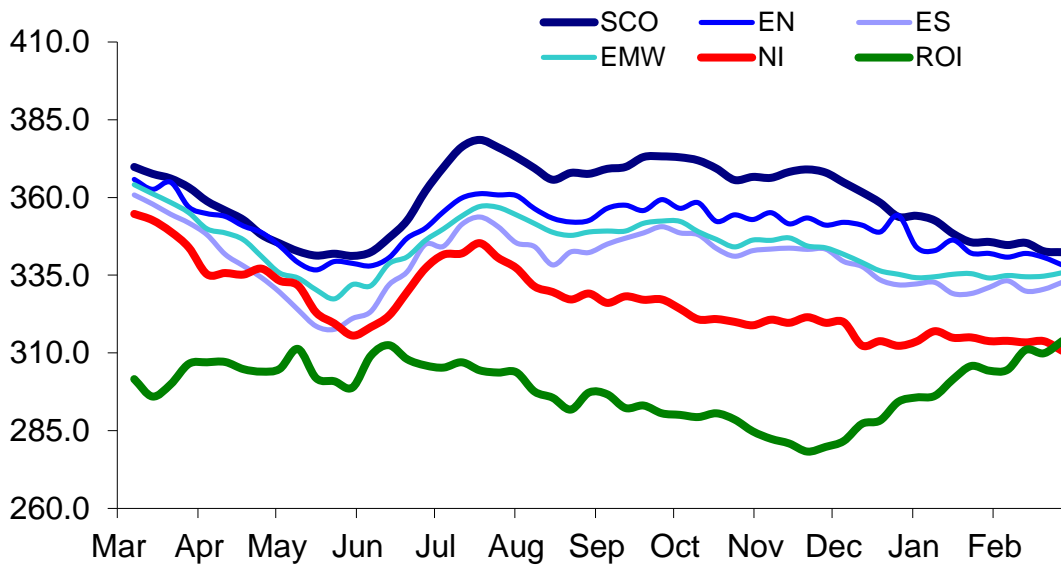
Prices relate to UK Dressing Specification

British Isles R3 Heifer Price
52 Weeks to 27 February 2016



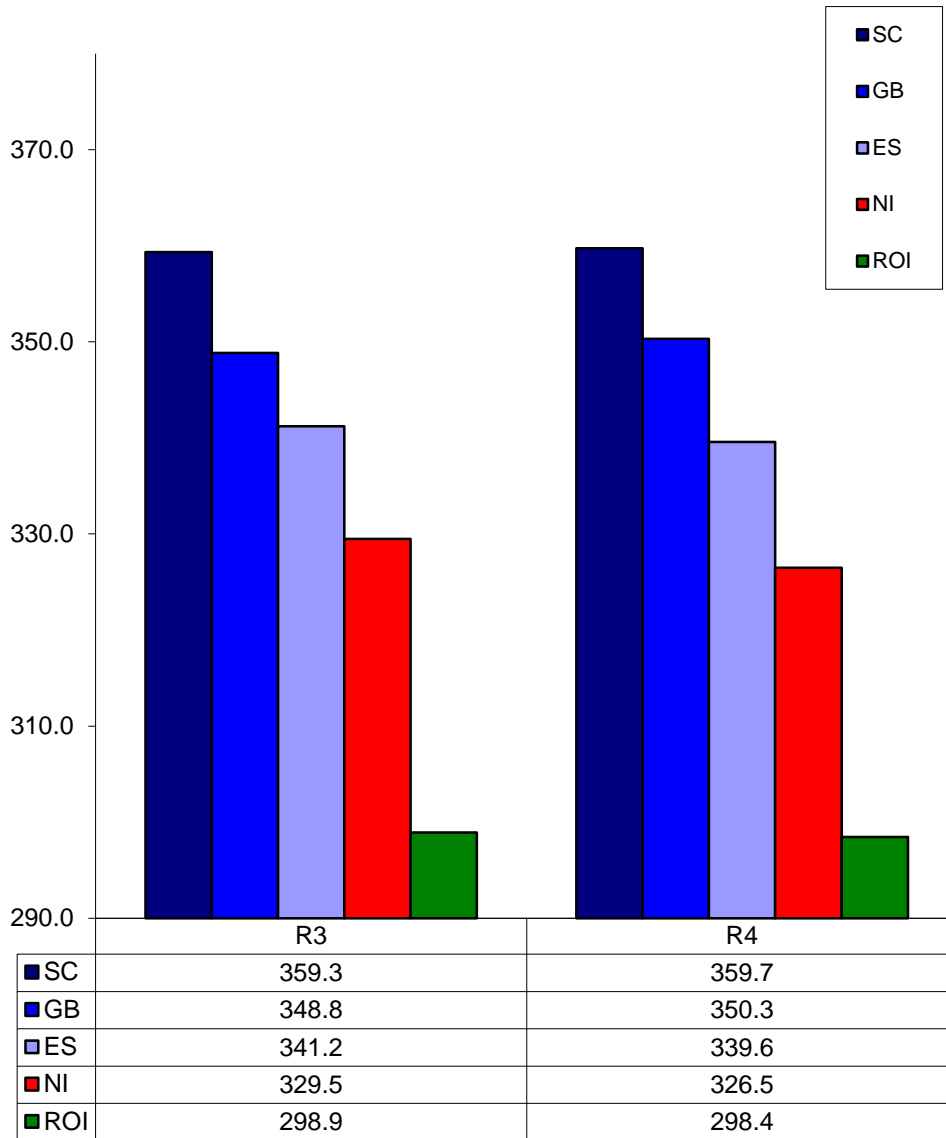
Prices relate to UK Dressing Specification

British Isles R4 Heifer Price
52 Weeks to 27 February 2016



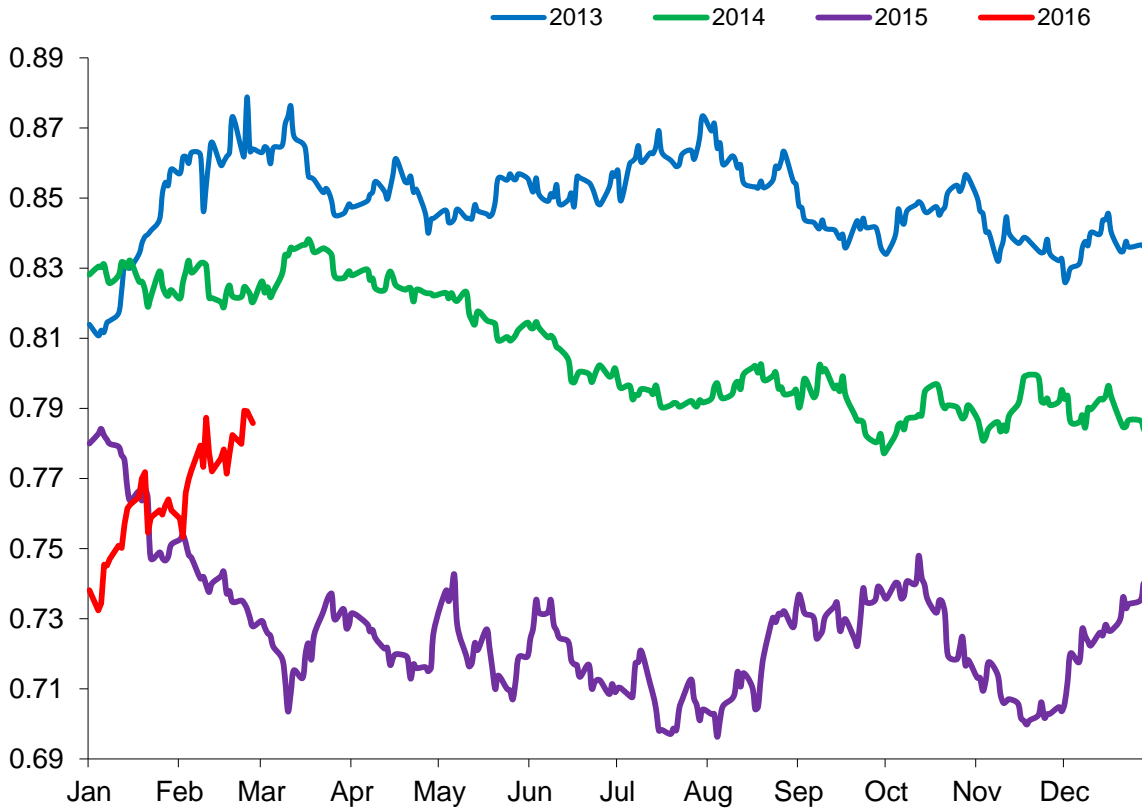
Prices relate to UK Dressing Specification

British Isles Average R3 and R4 Heifer price
52 Weeks to 27 February 2016



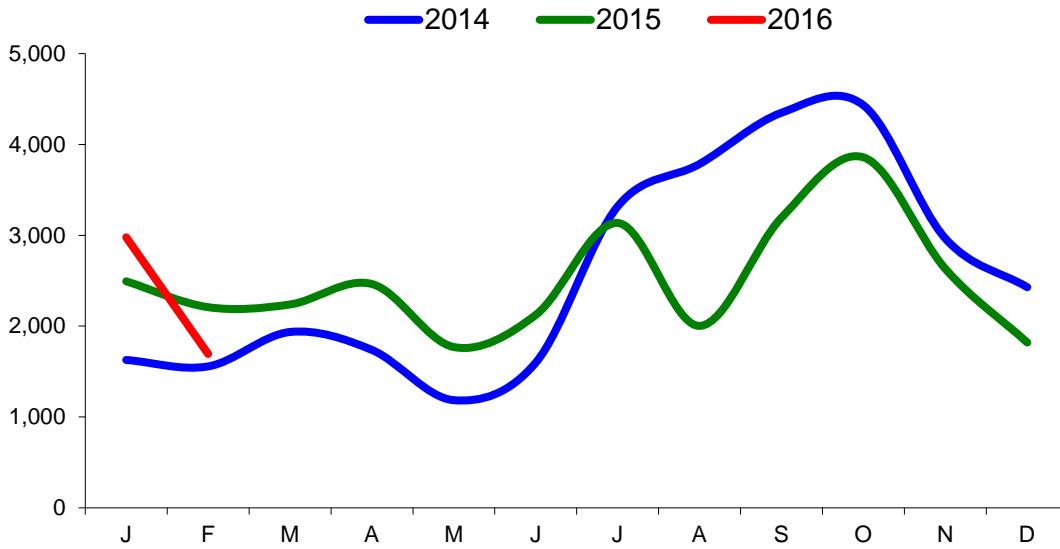
Prices relate to UK Dressing Specification

Exchange Rate £ / Euro
01 February 2013 – 29 February 2016

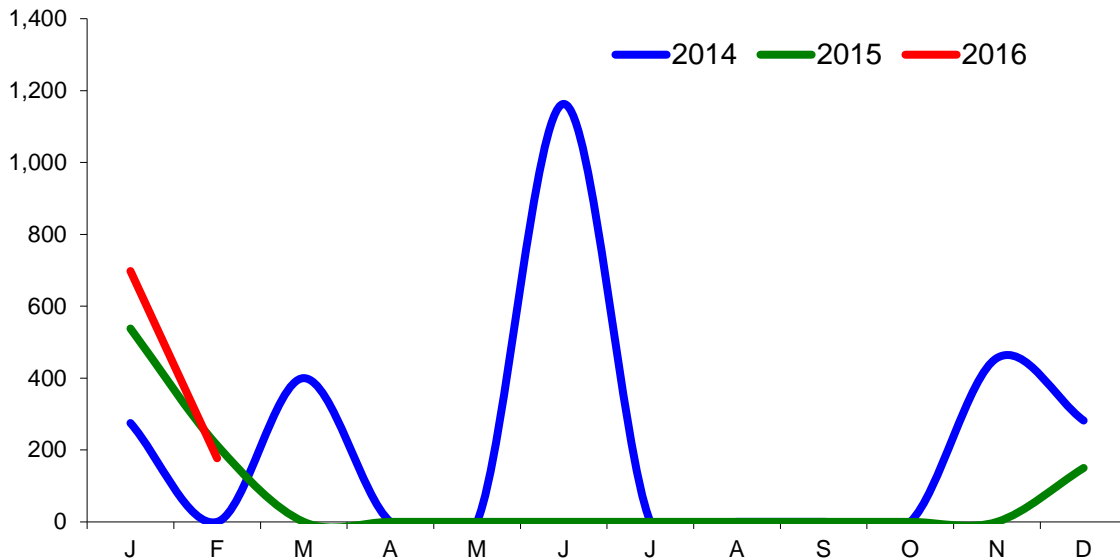


Imports

Monthly Live Imports of Cattle into NI for Direct Slaughter From ROI and GB Combined

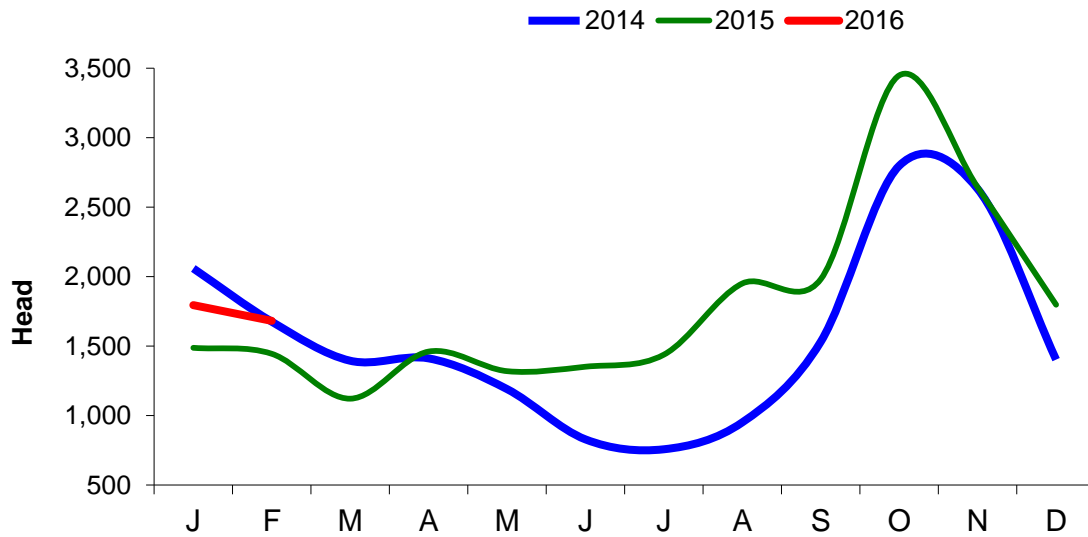


Monthly Live Imports of Sheep into NI for Direct Slaughter From ROI and GB Combined



Exports

Monthly Live Exports of Cattle from NI into ROI and GB



Monthly Live Exports of Sheep from NI into ROI and GB

