



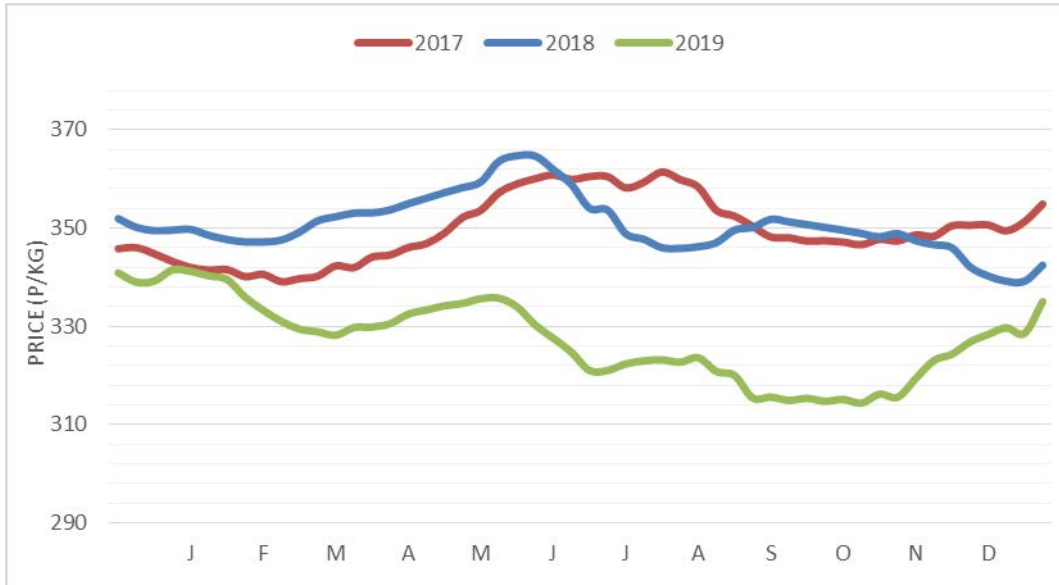
**Monthly Economic Review  
December 2019**

## Contents

Contents.....	2
Cattle Prices .....	3
Average NI Clean Cattle Price .....	3
Average NI Cow Price.....	3
Cattle Slaughtering.....	4
NI Clean Cattle Slaughtering – Cumulative .....	4
NI Weekly Clean Cattle Slaughtering.....	4
NI Weekly Cow Slaughtering .....	5
Sheep Prices.....	6
Average NI Lamb / Hogget Price .....	6
Sheep Slaughtering.....	7
Cumulative Lamb & Hogget Slaughtering .....	7
Total Weekly Lamb & Hogget Slaughtering .....	7
Total Weekly Ewe and Ram Slaughtering.....	7
Total Carcase Weight Produced for the Food Chain.....	8
Change in Throughput / Production .....	9
Supply and Price.....	10
NI Lamb/Hogget Kill vs. Average Lamb / Hogget Price .....	10
NI Clean Cattle Kill vs. Average Clean Cattle Price.....	10
British Isles Price Comparisons .....	11
UK Average Cow Prices .....	11
Weekly UK Cow Prices .....	11
British Isles R3 Steer Price .....	12
British Isles R4 Steer Price .....	12
British Isles Average R3 and R4 Steer price .....	13
British Isles R3 Heifer Price .....	14
British Isles R4 Heifer Price .....	14
British Isles Average R3 and R4 Heifer price.....	15
Exchange Rate £ / Euro .....	16
Imports.....	17
Monthly Live Imports of Cattle into NI for Direct Slaughter .....	17
Monthly Live Imports of Sheep into NI for Direct Slaughter .....	17
Exports .....	17
Monthly Live Exports of Cattle from NI into RoI and GB.....	18
Monthly live Exports of Sheep from NI into RoI and GB .....	18

Cattle Prices

Average NI Clean Cattle Price

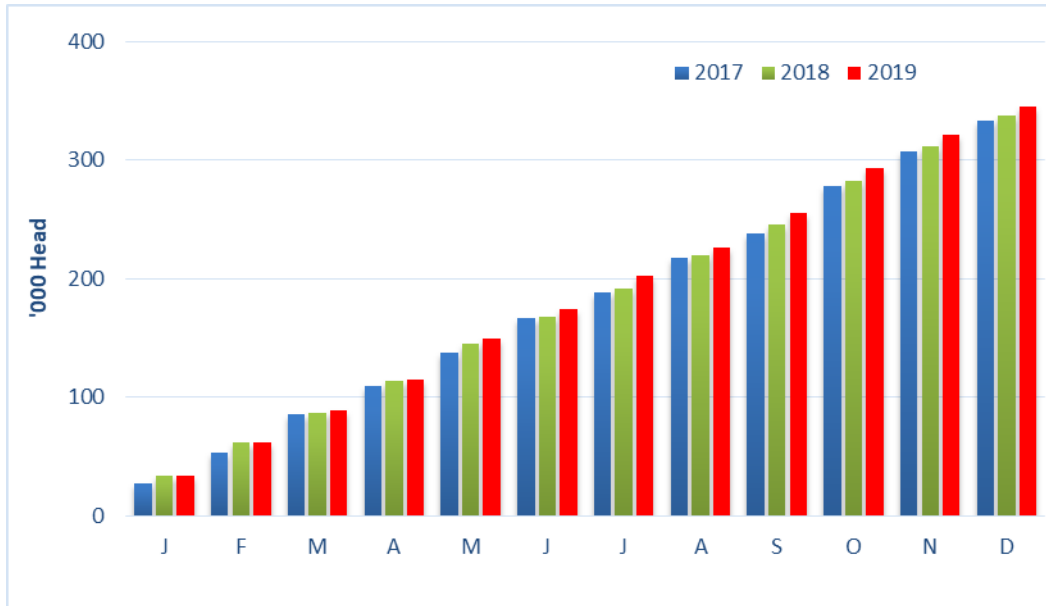


Average NI Cow Price

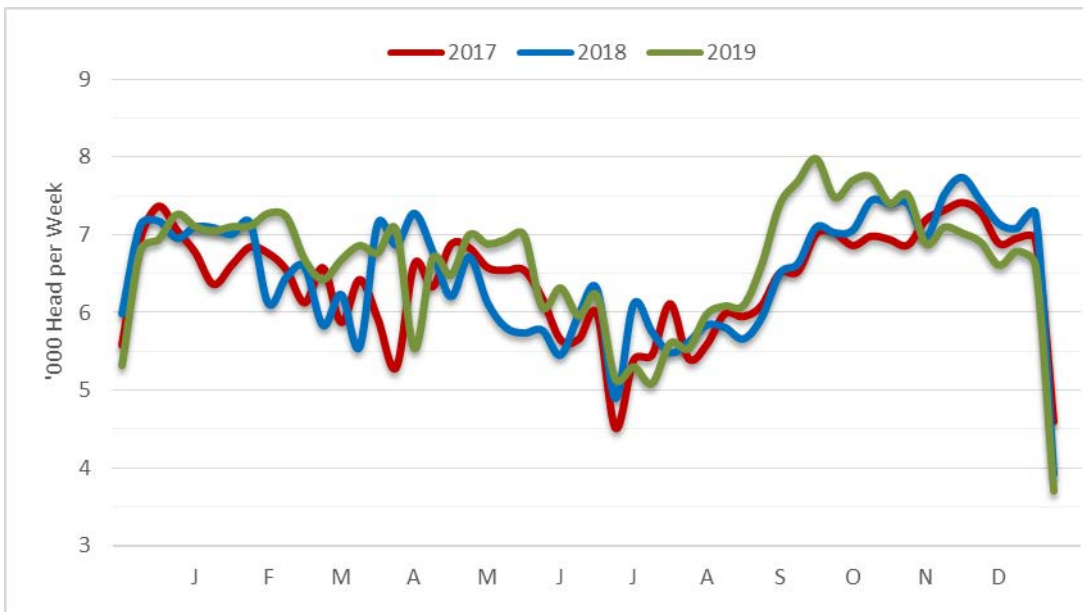


### Cattle Slaughtering

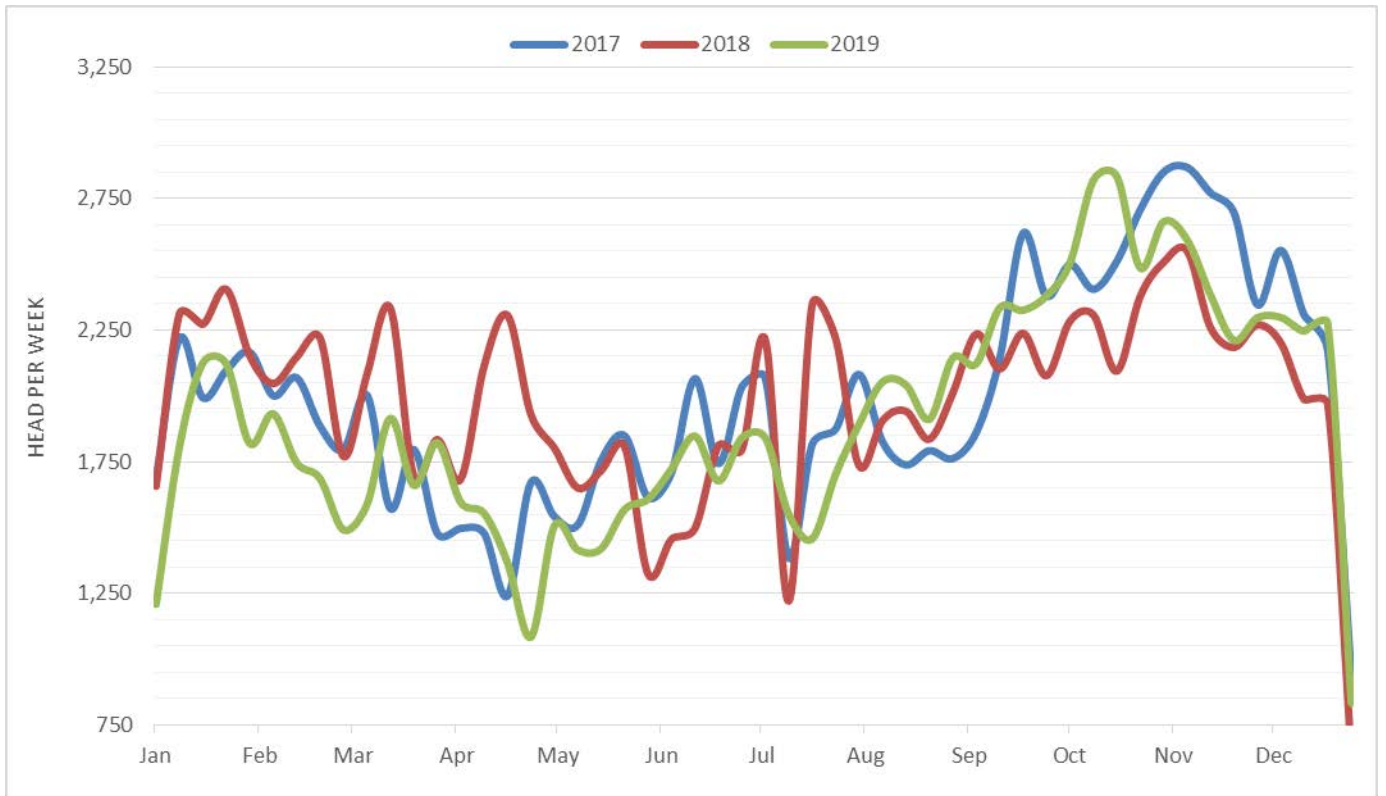
#### NI Clean Cattle Slaughtering – Cumulative



#### NI Weekly Clean Cattle Slaughtering

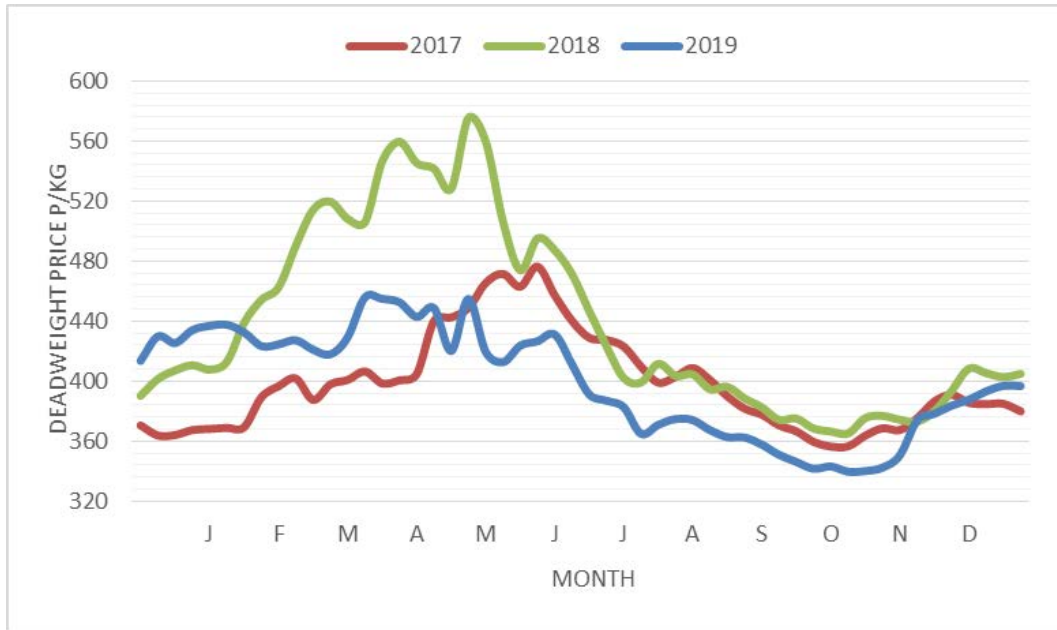


NI Weekly Cow Slaughtering



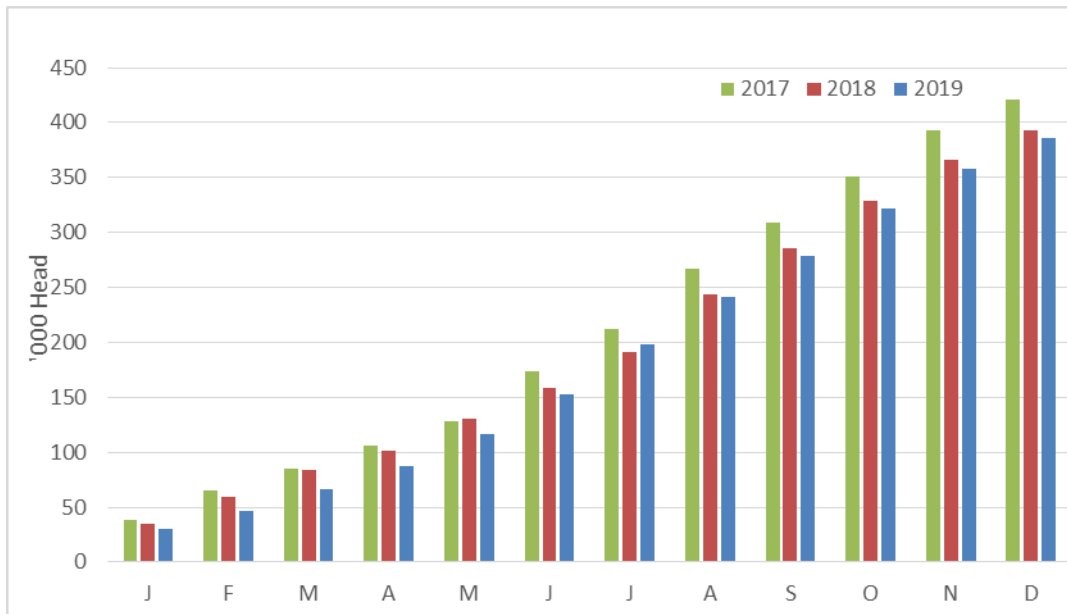
### Sheep Prices

**Average Deadweight NI Hogget / Lamb Price**

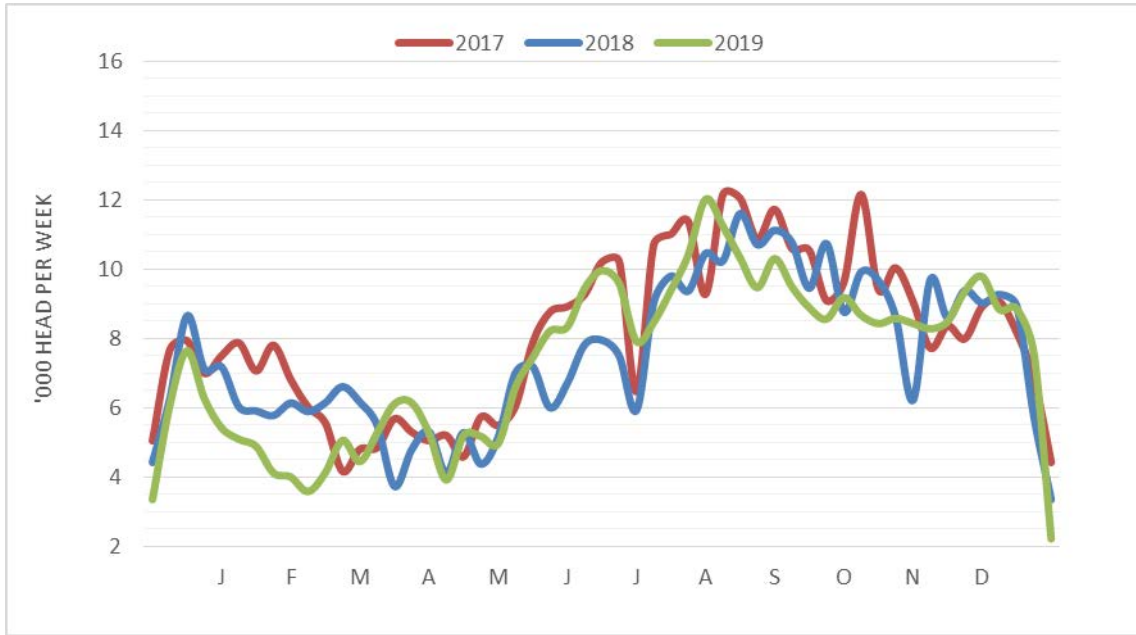


### Sheep Slaughterings

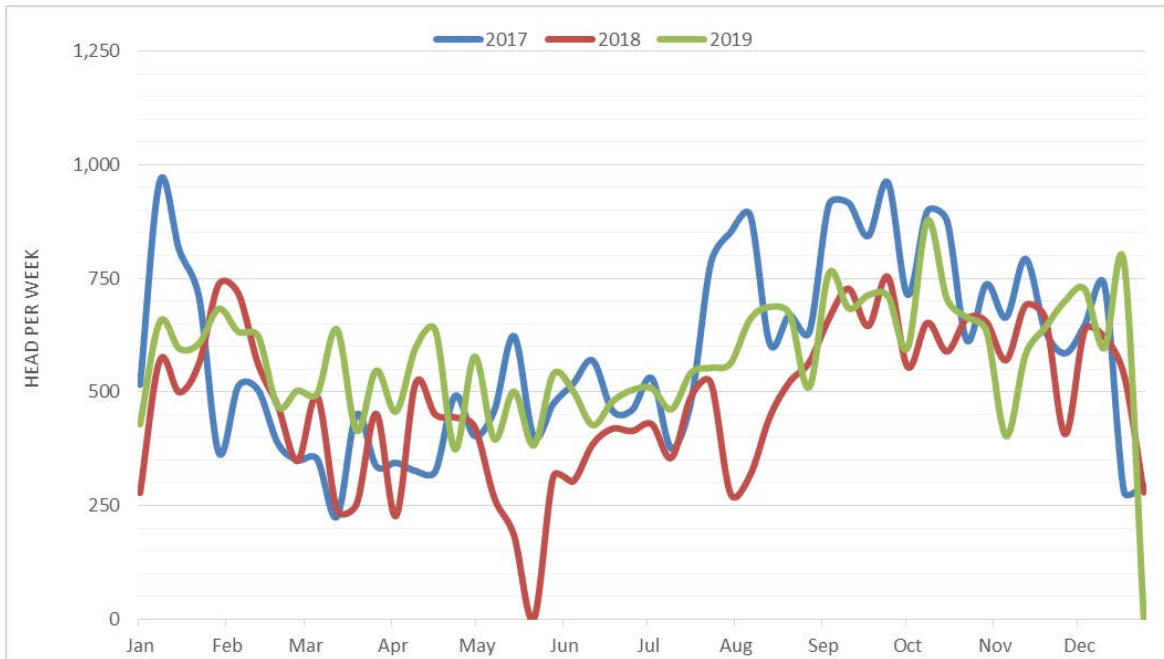
**Cumulative Lamb & Hogget Slaughterings**



### Total Weekly Lamb & Hogget Slaughtering



### Total Weekly Ewe and Ram Slaughtering



## Market Information December 2019

### Page 8

NI CATTLE AND SHEEP SLAUGHTERINGS FOR THE FOODCHAIN						
	December			Year to Date		
	(4 weeks ended 28/12/19)			(52 weeks ended 28/12/19)		
	Dec-18	Dec-19	% Change	2018	2019	Change
<b>CATTLE</b>						
Steers	12,332	11,783	-4%	160,732	163,918	+2%
Heifers	10,358	9,800	-5%	131,414	136,004	+3%
Young Bulls / Calves	2,706	2,128	-21%	44,845	44,749	-0%
<b>Total Prime Cattle</b>	<b>25,396</b>	<b>23,711</b>	<b>-7%</b>	<b>336,991</b>	<b>344,671</b>	<b>+2%</b>
Calves	440	441	+0%	6,107	5,970	-2%
Cows	6,804	7,652	+12%	103,533	99,321	-4%
Mature Bulls	386	319	-17%	4,708	5,258	+12%
<b>Total Cattle</b>	<b>33,026</b>	<b>32,123</b>	<b>-3%</b>	<b>451,339</b>	<b>455,220</b>	<b>+1%</b>
<b>SHEEP</b>						
Lambs & Hoggets	28,466	27,494	-3%	395,600	385,694	-3%
Ewes & Rams	2,073	2,106	+2%	24,744	29,600	+20%
<b>Total Sheep</b>	<b>30,539</b>	<b>29,600</b>	<b>-3%</b>	<b>420,344</b>	<b>415,294</b>	<b>-1%</b>
The above figures are provisional; any amendments will be incorporated in the cumulative data (source DAERA).						

NI BEEF AND SHEEPMEAT PRODUCTION - FOODCHAIN						
	December			Year to Date		
	(4 weeks ended 28/12/19)			(52 weeks ended 28/12/19)		
	Dec-18	Dec-19	% Change	2018	2019	Change
<b>BEEF</b>						
Steers	4,379	4,274	-2%	56,683	59,131	+4%
Heifers	3,335	3,096	-7%	41,596	43,866	+5%
Young Bulls	893	723	-19%	15,100	15,426	+2%
<b>Total Prime Beef</b>	<b>8,606</b>	<b>8,092</b>	<b>-6%</b>	<b>113,379</b>	<b>118,423</b>	<b>+4%</b>
Calves	85	87	+2%	1,175	1,249	+6%
Cows	2,045	2,355	+15%	31,055	30,526	-2%
Mature Bulls	157	149	-4%	1,996	2,338	+17%
<b>Total Beef</b>	<b>10,893</b>	<b>10,684</b>	<b>-2%</b>	<b>147,606</b>	<b>152,538</b>	<b>+3%</b>
<b>SHEEPMEAT</b>						
Lambs & Hoggets	649	622	-4%	8,533	8,538	+0%
Ewes & Rams	56	57	+1%	679	856	+26%
<b>Total Sheepmeat</b>	<b>706</b>	<b>679</b>	<b>-4%</b>	<b>9,212</b>	<b>9,394</b>	<b>+2%</b>
The above figures are provisional; any amendments will be incorporated in the cumulative data (source DAERA).						



**Market Information December 2019**  
**Page 9**

**Total Carcase Weight Produced for the Food Chain**  
**Year-to-Date (tonnes – t.)**

Month	Prime Cattle		Cows & Bulls		Lambs/Hoggets		Ewes & Rams	
	2018	2019	2018	2019	2018	2019	2018	2019
January	11,543	11,378	3,406	2,966	764	698	73	87
February	9,194	9,808	2,560	2,249	515	381	53	65
March	8,351	9,243	2,484	2,257	534	440	40	61
April	8,922	8,934	2,510	1,841	387	508	47	63
May	10,581	11,691	2,665	2,646	613	677	35	76
June	7,694	8,757	2,175	2,423	595	759	43	60
July	9,588	9,327	2,647	2,892	870	982	59	77
August	7,638	8,216	3,001	2,734	907	921	52	72
September	8,820	10,310	2,762	2,981	889	800	75	80
October	12,386	13,089	3,681	4,307	997	950	84	92
November	10,054	9,577	2,959	3,064	813	799	64	65
December	8,606	8,092	2,201	2,504	649	622	56	57
<b>Total</b>	<b>113,378</b>	<b>118,422</b>	<b>33,050</b>	<b>32,865</b>	<b>8,533</b>	<b>8,537</b>	<b>681</b>	<b>855</b>
<b>Change (t.)</b>	<b>5,044</b>		<b>-186</b>		<b>4</b>		<b>175</b>	
<b>% Change</b>	<b>4.45%</b>		<b>-0.56%</b>		<b>0.05%</b>		<b>25.66%</b>	

\*excludes calves

**Change in Throughput / Production**

**Last 4 weeks 2018/2019**

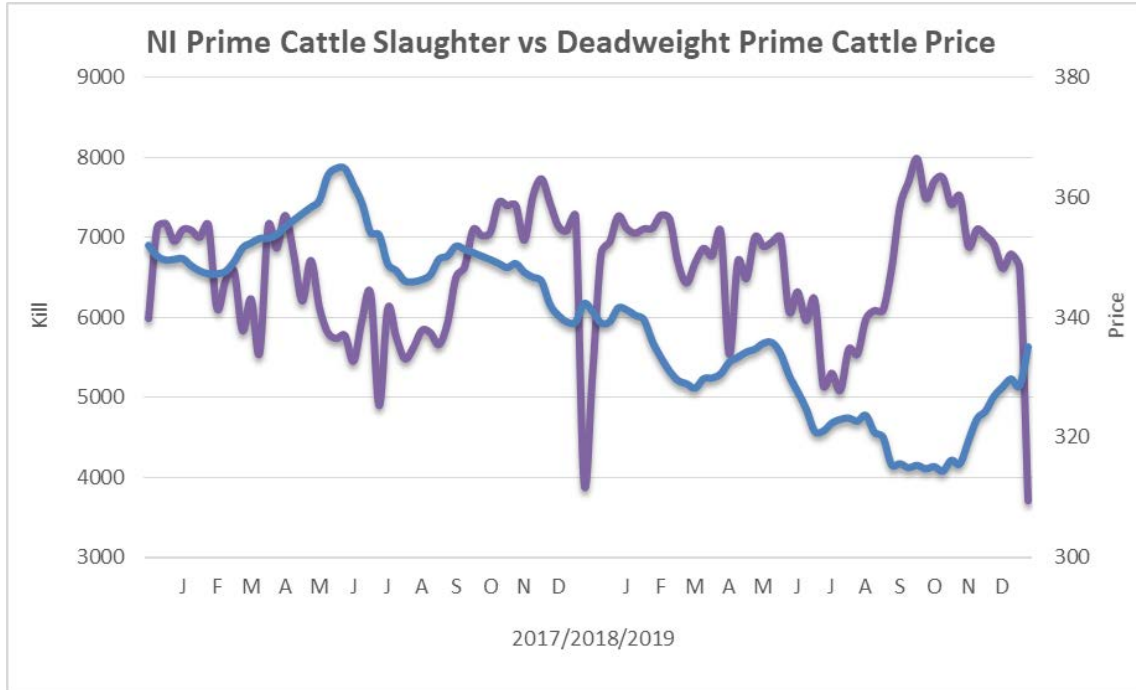
**Change in Throughput / Production 2018/2019**

**December**

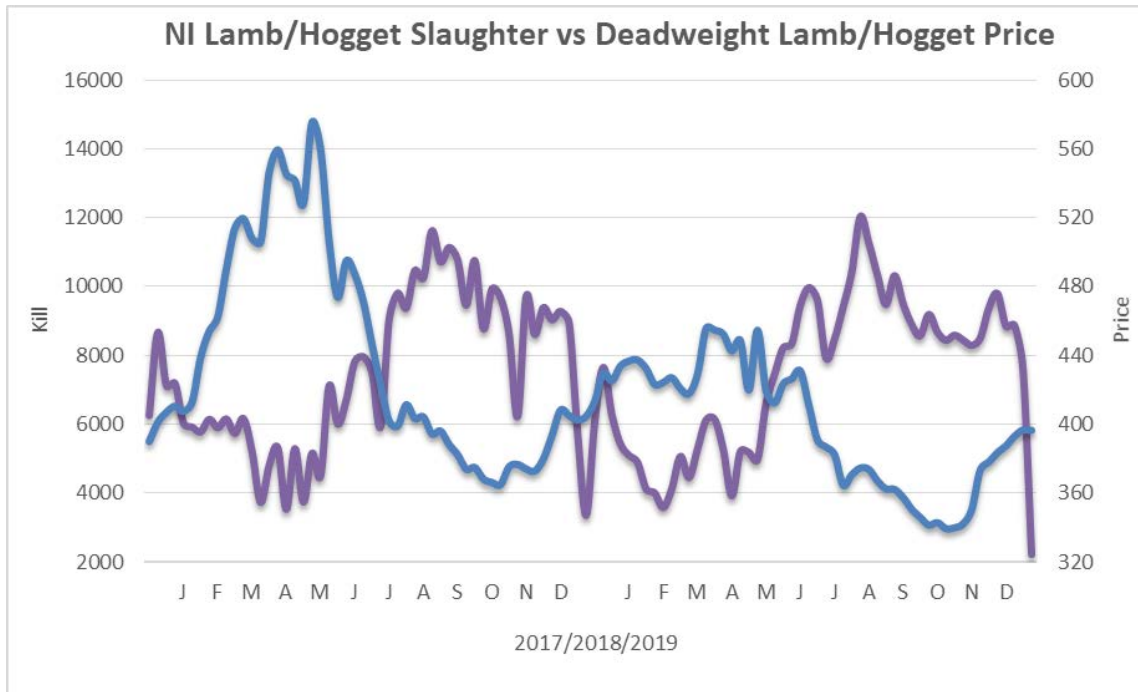
2018/2019	Number	Tonnage	ACW Kg
Prime	-6.6%	-6.0%	2.53
Cows	12.5%	15.1%	8.05
<b>Total</b>	<b>-2.7%</b>	<b>-1.9%</b>	<b>2.60</b>
Lamb	-3.4%	-4.2%	-0.22
Ewes and Rams	1.6%	1.4%	-1.23
<b>Total Sheep</b>	<b>-3.1%</b>	<b>-3.7%</b>	<b>-0.26</b>

**Supply and Price**

**NI Clean Cattle Kill vs. Average Clean Cattle Price**



**NI Lamb/Hogget Kill vs. Average Lamb / Hogget Price**

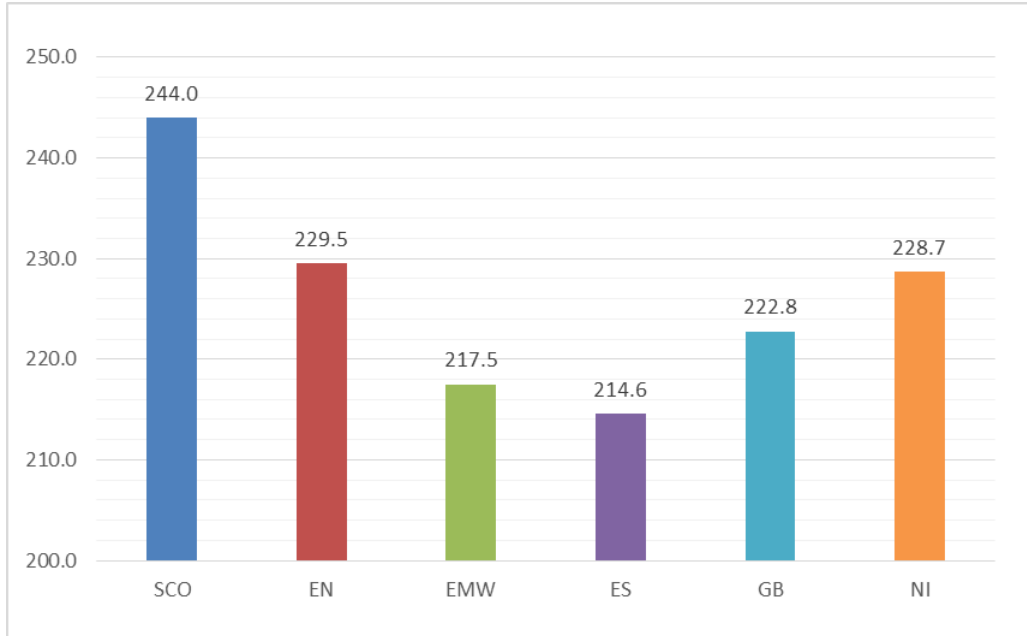


Purple	Supply (Kill)
Blue	Price

**BRITISH ISLES COMPARISONS**

**UK Average Cow Prices**

**52 Weeks to w/e 28 December 2019**

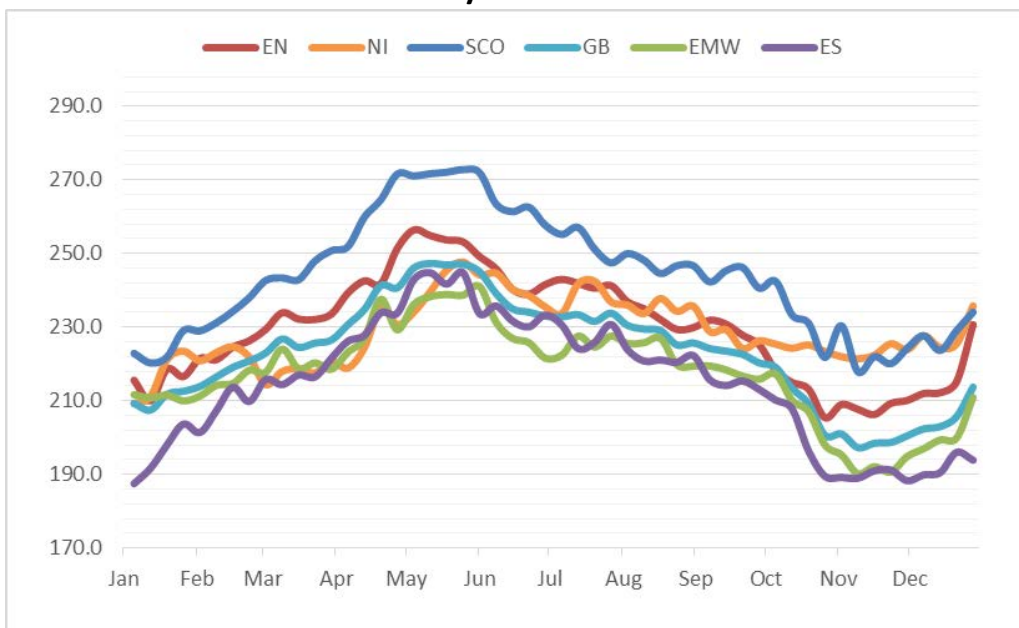


SCO	Scotland
EN	England North
EMW	England Midlands and Wales
ES	England South
NI	Northern Ireland
GB	Great Britain

Prices relate to UK Dressing Specification

**Weekly UK Cow Prices**

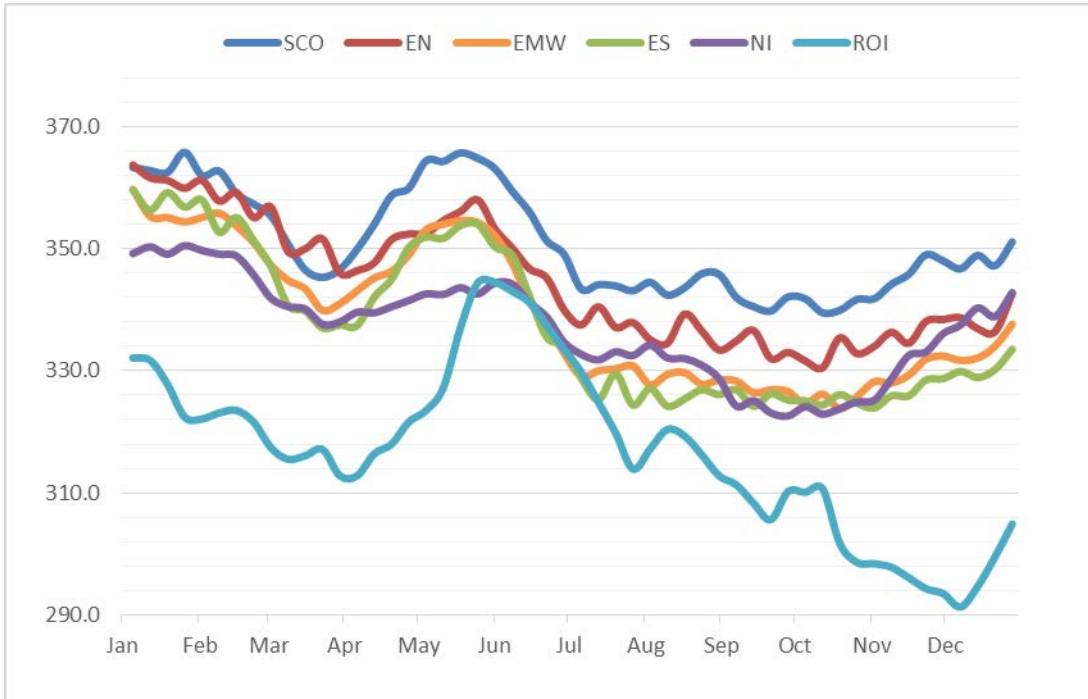
**52 Weeks to w/e 28 December 2019**



Prices relate to UK Dressing Specification

British Isles R3 Steer Price

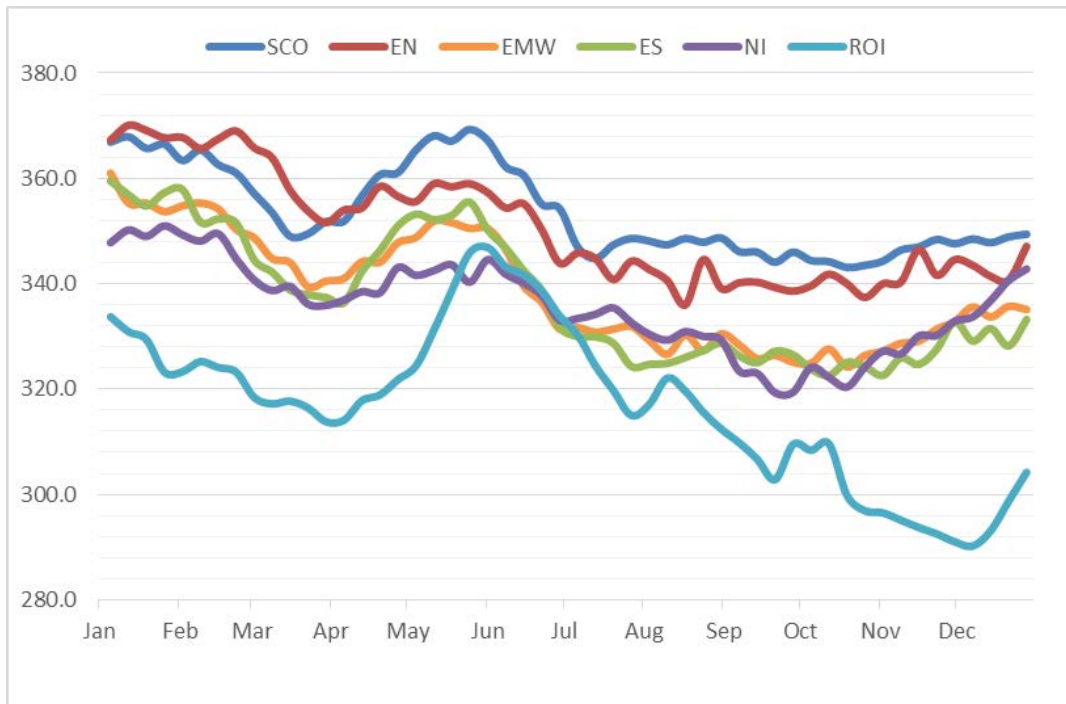
52 Weeks to w/e 28 December 2019



Prices relate to UK Dressing Specification

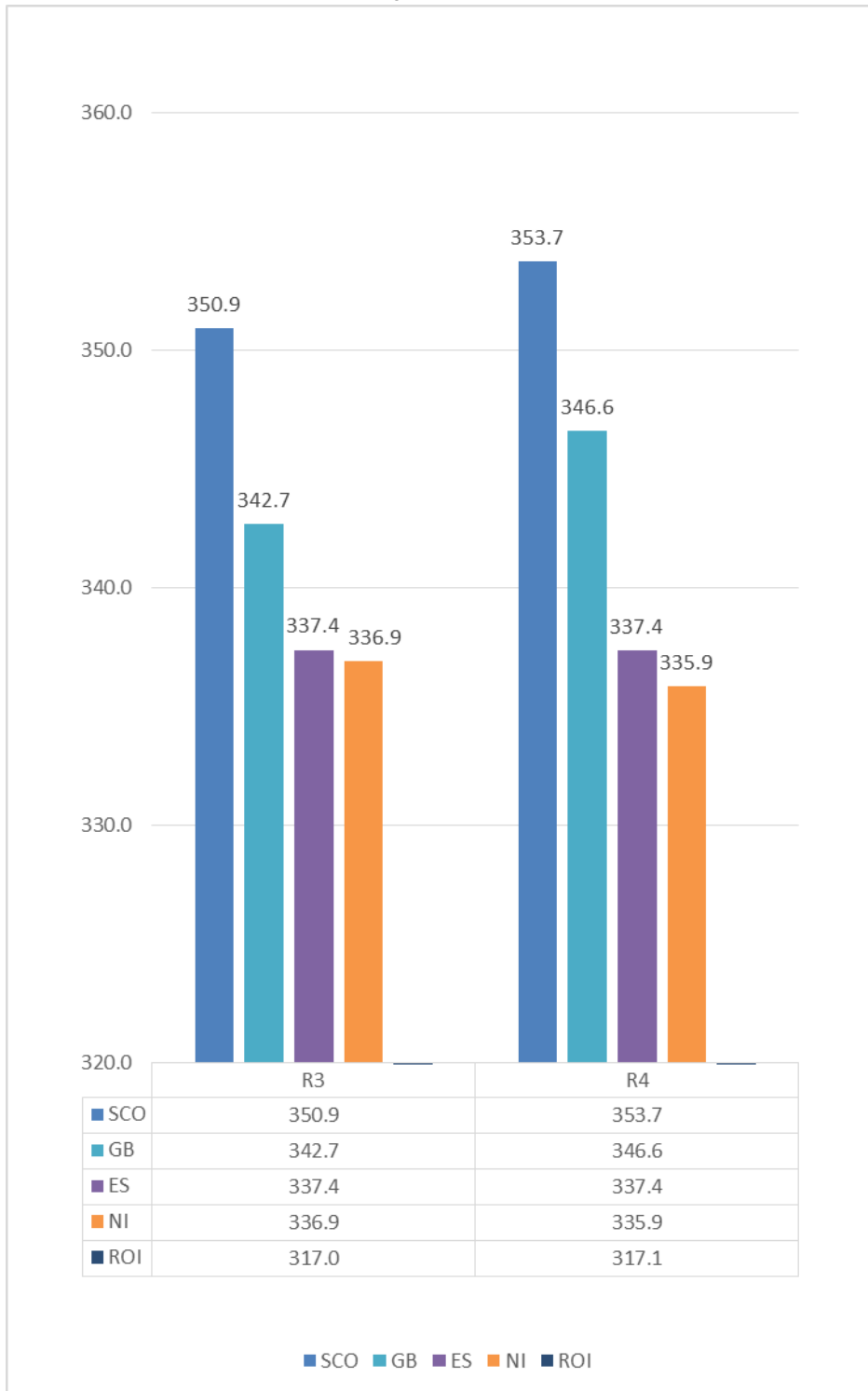
British Isles R4 Steer Price

52 Weeks to w/e 28 December 2019



Prices relate to UK Dressing Specification

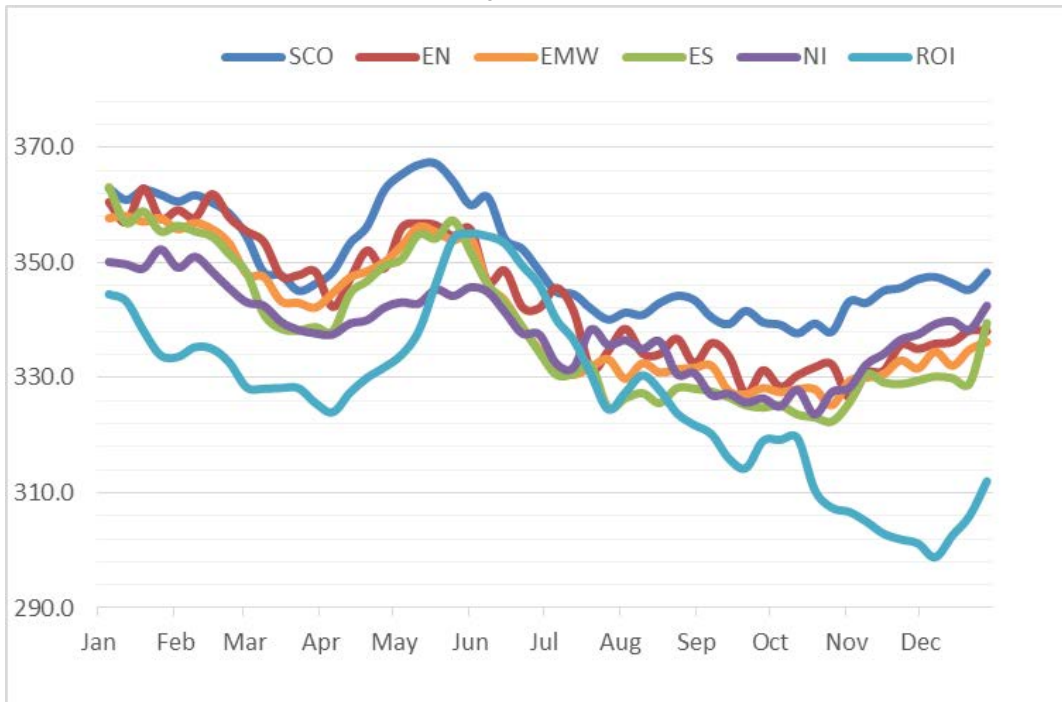
**British Isles Average R3 and R4 Steer price**  
**52 Weeks to w/e 28 December 2019**



Prices relate to UK Dressing Specification

British Isles R3 Heifer Price

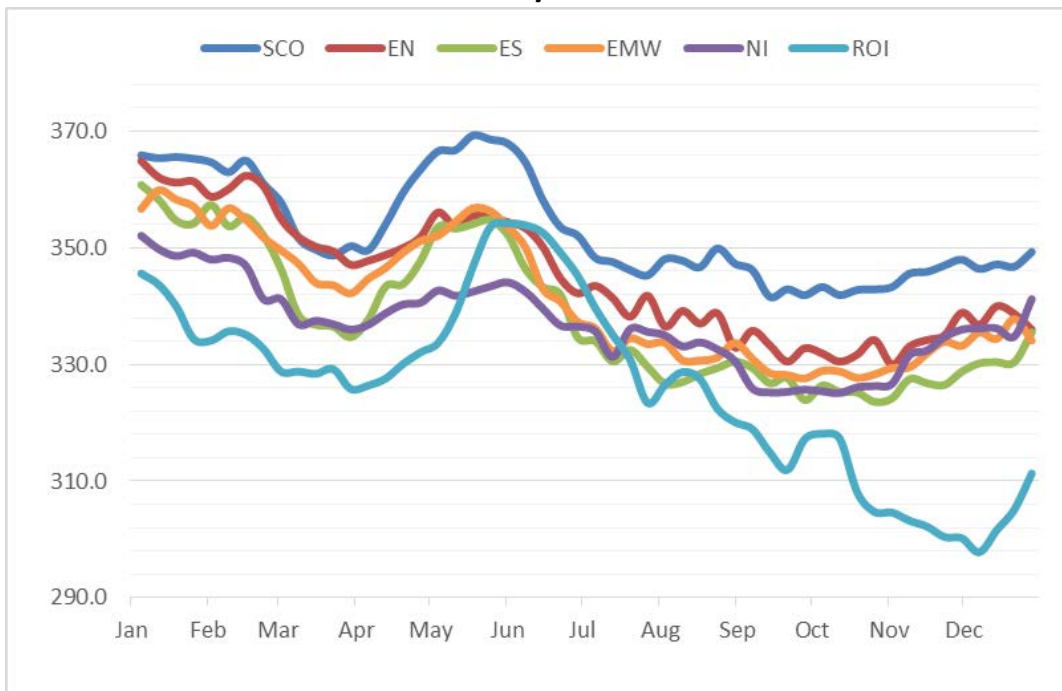
52 Weeks to w/e 28 December 2019



Prices relate to UK Dressing Specification

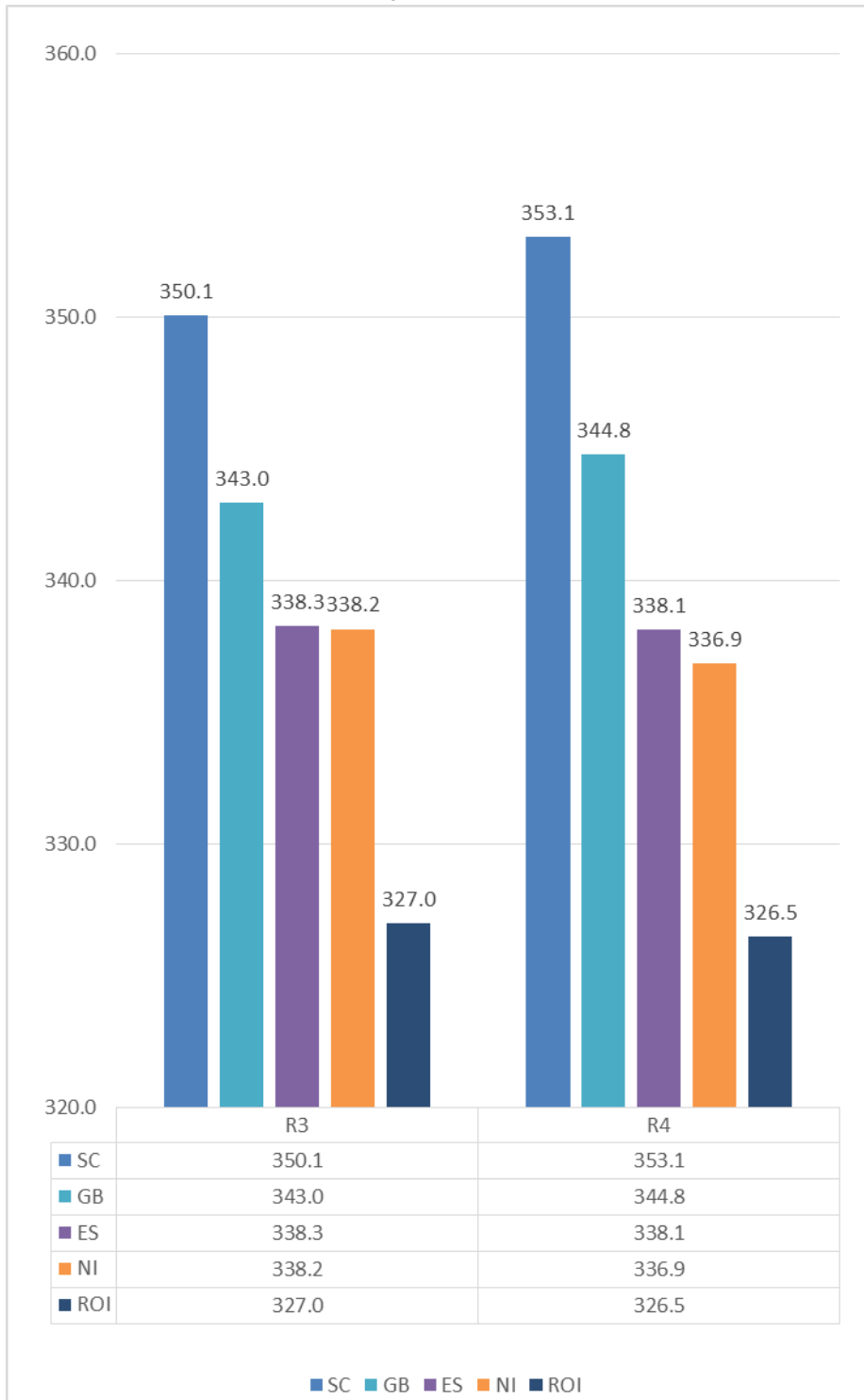
British Isles R4 Heifer Price

52 Weeks to w/e 28 December 2019



Prices relate to UK Dressing Specification

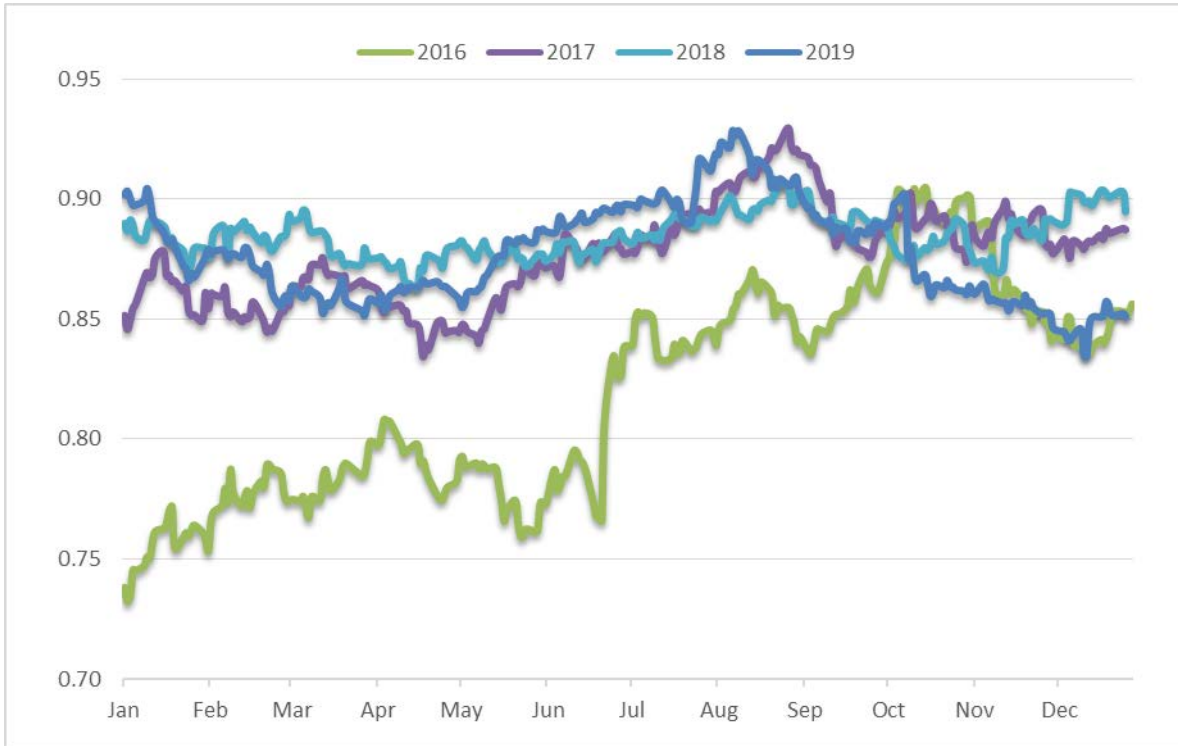
**British Isles Average R3 and R4 Heifer price**  
**52 Weeks to w/e 28 December 2019**



Prices relate to UK Dressing Specification

Exchange Rate £ / Euro

01 January 2016 – 31 December 2019

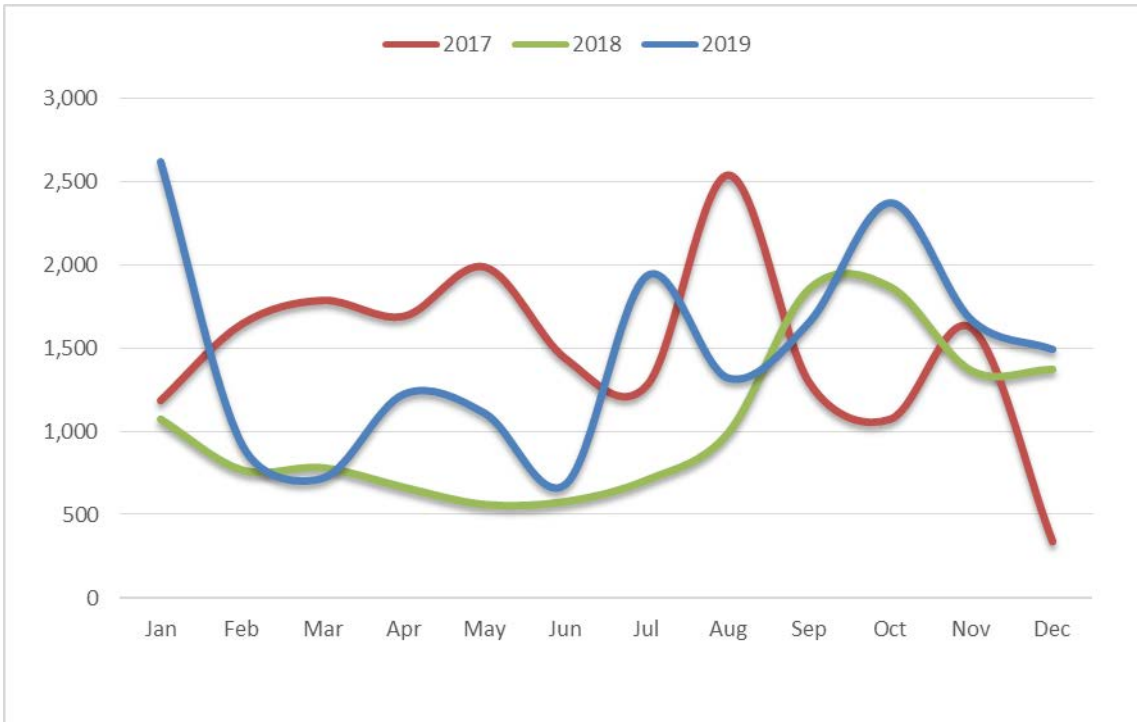




Imports

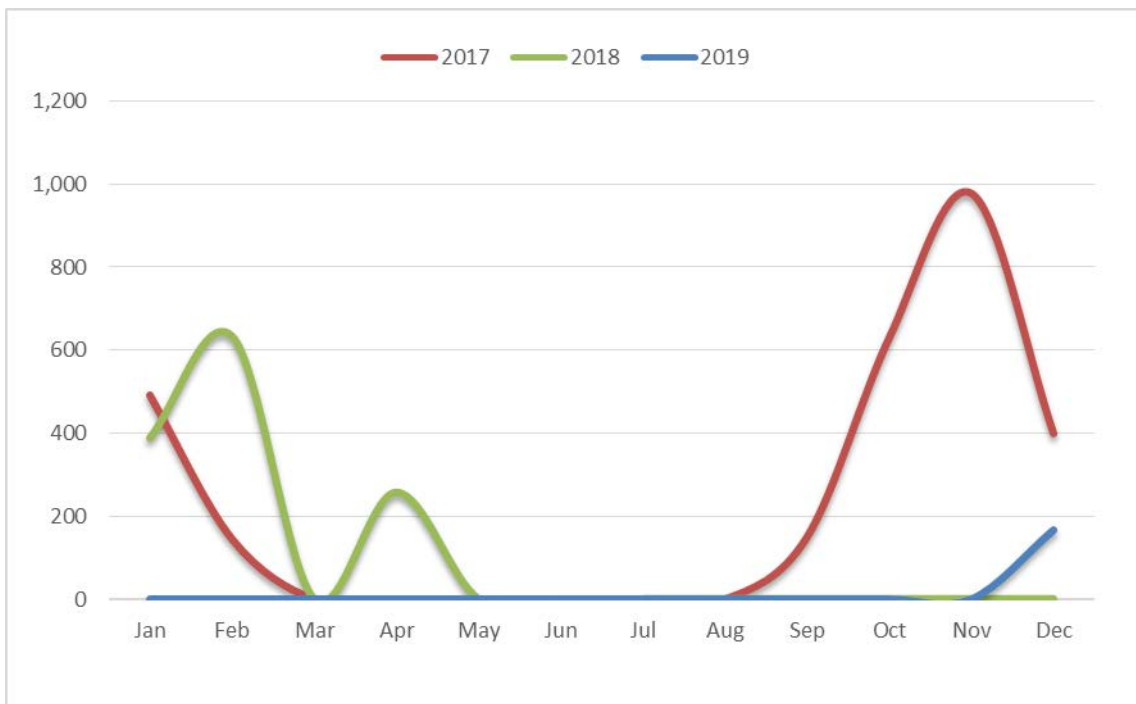
Monthly Live Imports of Cattle into NI for Direct Slaughter

From ROI and GB Combined



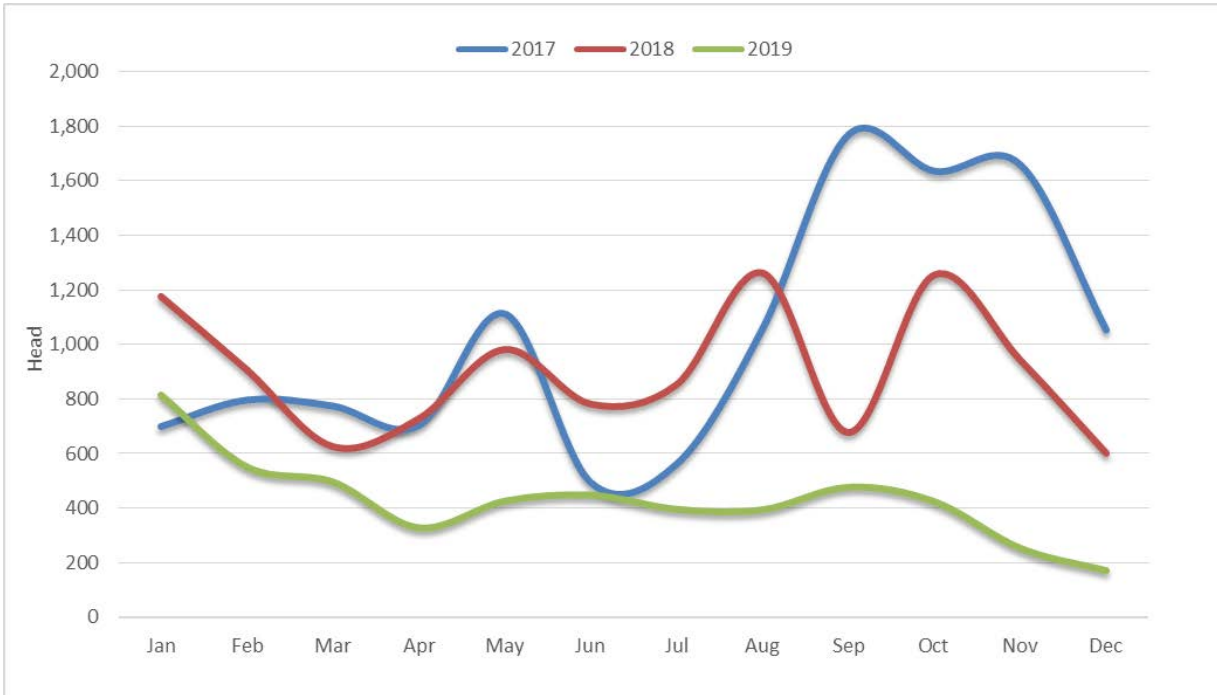
Monthly Live Imports of Sheep into NI for Direct Slaughter

From ROI and GB Combined



Exports

Monthly Live Exports of Cattle from NI into ROI and GB



Monthly Live Exports of Sheep from NI into ROI and GB

